

Installing and Uninstalling Windows[®] 7 Xerox Print Drivers Customer Tip



dc09cc0458

January 29, 2010

This document applies to Xerox Print Drivers for the Windows 7 Operating System.

Purpose

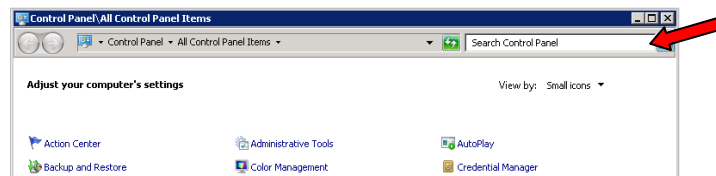
This document contains the procedure to install and uninstall Xerox Print Drivers in a Microsoft Windows 7 environment.

Prerequisites

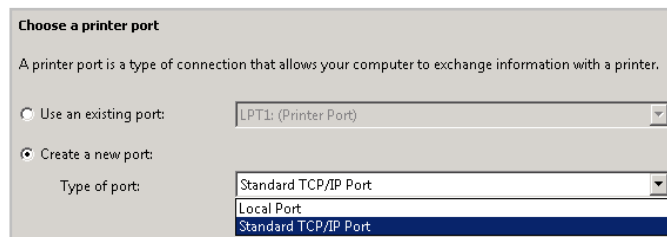
The print driver files must be placed in a location accessible from the workstation in which the print driver will be installed.

Installation Procedure

1. From Windows 7 click on **'Start → Control Panel'**.
2. Click on **'Devices and Printers'**. If that selection is not available search for **'Printers'** in the **'Search Control Panel'** field.

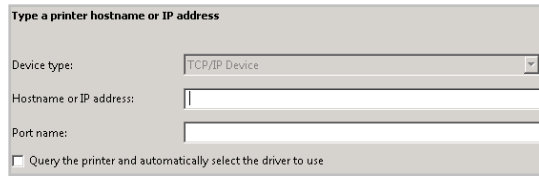


3. Select **'Add a printer'** and then **'Add a local printer'**.
4. Within the **'Choose a printer port'** window select **'Create a new port:'**
5. Choose **'Standard TCP/IP Port'** from the **'Type of port'** pull-down.

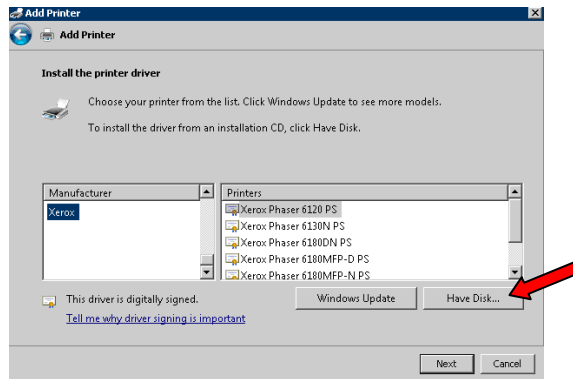


6. Within the 'Type a printer hostname or IP address' window enter the 'Hostname or IP Address' of the printer and select [Next].

Note: The 'Port name' will mirror the IP address or Hostname. You may change the Port name in this step to something you can identify easier.

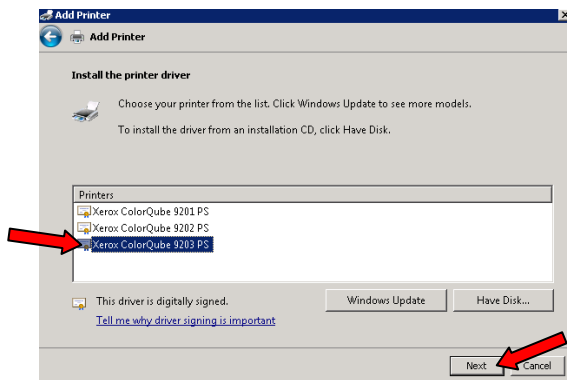


7. In the 'Install the printer driver' window select [Have Disk...].



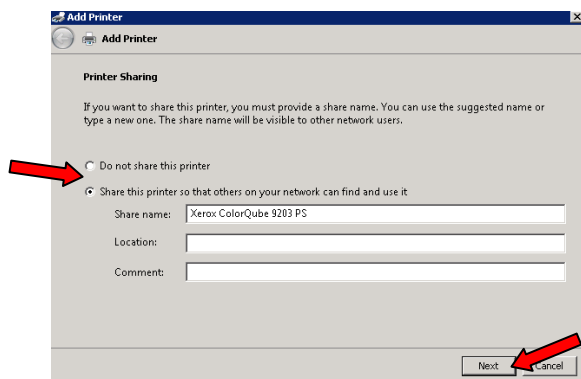
8. Browse to the location where you saved the Print Driver files and select [Open] and then [OK].

9. In the 'Install the printer driver' window choose the printer you are installing the driver for and select [Next].



10. Within the 'Type a printer name' window you can manually enter a printer name or accept the default provided. Select [Next] which will start the print driver installation.

11. Within the 'Printer Sharing' window choose to either share the printer or not, and select **[Next]**.



12. You will receive a message stating that you successfully installed the printer.

13. To verify that the driver install select **[Print a test page]**. You will be given a message stating that the test page was sent to the printer. Select **[Close]**.

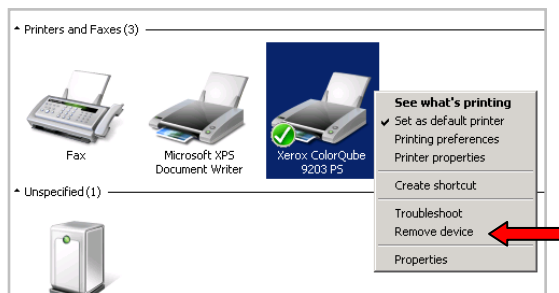
14. Once the test page successfully prints select **[Finish]**.

15. You'll notice that the printer is now included in the 'Printers and Faxes' section within the Control Panel.

16. You have successfully installed the print driver.

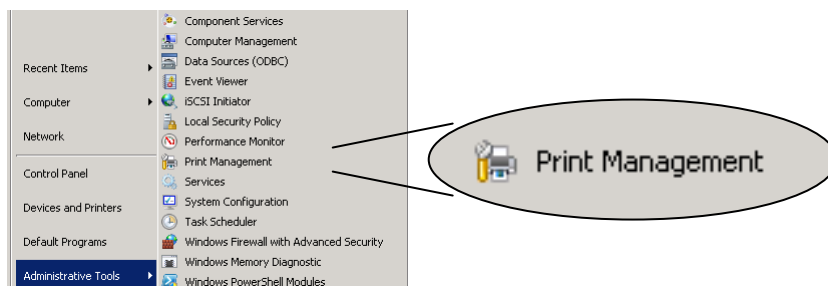
Uninstall Procedure

1. From Windows 7 click on 'Start → Control Panel'.
2. Select 'Devices and Printers'.
3. Find the device you would like to uninstall and right click on the printer icon.
4. Select 'Remove device'.

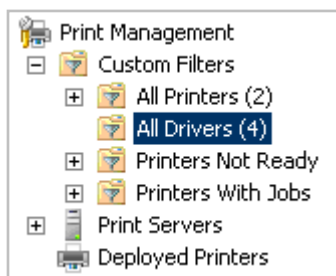


5. Select **[Yes]** when asked "Are you sure you want to remove this device?" The device will disappear from the 'Printers and Faxes' section. Close the 'Control Panel' window.

6. From Windows 7 select 'Start → Administrative Tools → Print Management'.



7. Within the 'Print Management' window select 'Custom Filters → All Drivers'.



8. Right click the print driver you want to delete and select 'Delete'.
9. Click [Yes] when asked to confirm you want to delete the driver.
10. Within the same window verify that the printer does not exist in the 'All Printers' or 'Printers Not Ready' directory.
11. You have successfully uninstalled the print driver.

Additional Information

You can reach Xerox Customer Support at <http://www.xerox.com> or by calling Xerox Support in your country.

Xerox Customer Support welcomes feedback on all documentation - send feedback via e-mail to: USA.DSSC.Doc.Feedback@mc.usa.xerox.com.

Other Tips about Xerox multifunction devices are available at the following URL: <http://www.office.xerox.com/support/dctips/dctips.html>.

© 2010 Xerox Corporation. All rights reserved. XEROX®, and the sphere of connectivity design are trademarks of Xerox Corporation in the United States and/or other countries.

Windows is a registered trademark of Microsoft Corporation in the United States and other countries.