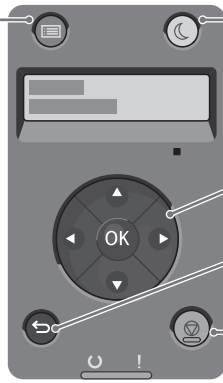


# Xerox® Phaser® 3610 Black and White Printer

## Menus



Power Saver On/Off

Menu

Arrow buttons scroll up, down, forward, and back through the menus. Press the left arrow to display the Walk-Up Features menu and list Secure Jobs and Saved Jobs.

OK button accepts the menu selection.

Back/Return button goes up one level in the menu.

Cancel button cancels printing jobs.

### Information Pages

- Menu Map
- Configuration
- PCL Fonts List
- PCL Macros List
- PS Fonts List
- PDF Fonts List
- Job History
- Error History
- Print Meter
- Demo Page
- Stored Documents

### Billing Meters

- Total Impression

### Admin Settings

- PCL Settings ▶
- PDF Settings ▶
- PS Settings ▶
- Network Setup ▶
- USB Settings ▶
- System Settings ▶
- Service Tools ▶
- Secure Settings ▶

- Quantity
- 2-Sided Print\*\*
- Print Mode
- PDF Password
- Collated
- Output Size
- Layout

- PS Error Report
- PS Job Timeout
- PaperSelect Mode
- Edge to Edge

- Panel Lock
- Show NetworkInfo
- Data Encryption\*
- Login Error

- Paper Tray
- Paper Size
- Orientation
- 2-Sided\*\*
- Font
- Symbol Set
- Font Size
- Font Pitch
- Form Line
- Quantity
- Image Enhance
- Hex Dump
- Draft Mode
- Line Termination
- Ignore Form Feed
- Wide A4
- Edge To Edge

- Ethernet
- Wi-Fi Status\*
- Wi-Fi Setup\*
- WPS Setup\*
- Reset Wi-Fi\*
- TCP/IP
- Protocols
- IP Filter
- Reset Defaults
- Del Certificates
- PS Data Format

- USB Port
- PS Data Format
- Job Timeout

- F/W Version
- Adjust PaperType
- Adjust TransUnit
- Adjust Fuser
- Adjust Density
- Chart
- Clean Developer
- Clean TransUnit
- Toner Refresh
- Reset Defaults
- Init Print Meter
- Reset Trans Unit
- Reset Fuser
- Clear JobHistory
- Clear Storage\*
- Clear Memory\*
- Adjust Altitude
- StaticMemory Ctr
- Ghost Control

- Energy Saver
- Panel Timeout
- Fault Timeout
- Clock Settings
- Audio Tones
- mm / inch
- Default Size
- Auto Log Print
- 2-Sided Report\*\*
- Print ID
- Print Text
- Banner Page
- RAM Disk\*
- Size Mismatch
- MPT Bypass Mode
- Startup Page
- LetterH Dup Mode\*\*
- Low Toner Msg
- Toner Threshold
- S/W Download
- Power On Wizard

### Tray Settings

- Bypass Tray
- Tray 1
- Tray 2\*
- Tray Priority

### Panel Language

- |          |            |          |
|----------|------------|----------|
| English  | Nederlands | Polski   |
| Français | Português  | Türkçe   |
| Italiano | Svenska    | Suomi    |
| Deutsch  | Русский    | Norsk    |
| Español  | Magyar     | Ελληνικά |
| Dansk    | Česky      |          |



[www.xerox.com/office/3610docs](http://www.xerox.com/office/3610docs)

\* Option  
\*\* Phaser 3610DN