

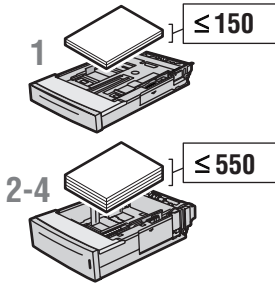
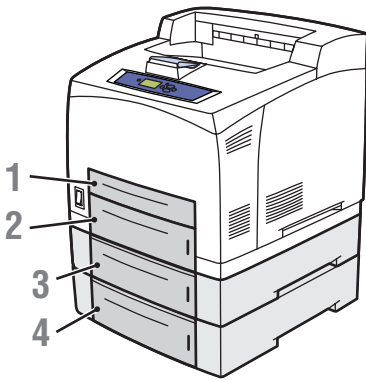
laser printer

Quick Reference Guide

Français	FR	Petit guide de référence
Italiano	IT	Guida rapida
Deutsch	DE	Kurzübersicht
Español	ES	Guía de referencia rápida
Português	PT	Guia de referência rápida



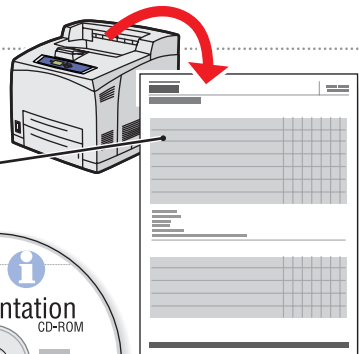
Supported Papers



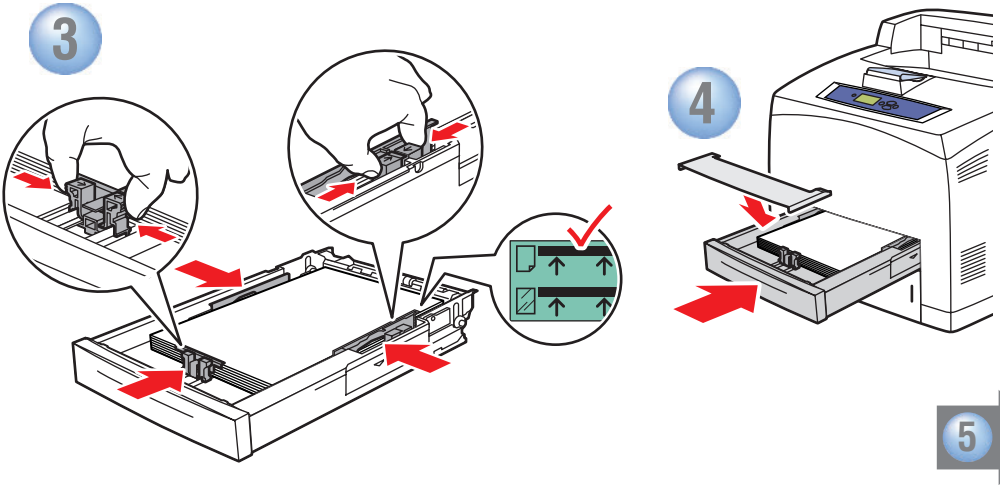
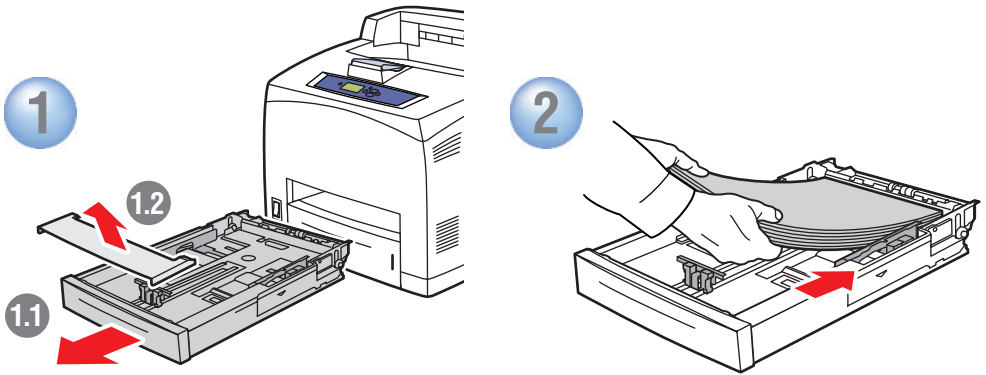
Tray 1-4			
	60 – 216 g/m² (16 lb. Bond – 80 lb. Cover)		
Index Card	3 x 5 in.	Tray 1	
Statement	5.5 x 8.5 in.		
Executive	7.25 x 10.5 in.		
Letter	8.5 x 11.0 in.		
US Folio	8.5 x 13.0 in.		
Legal	8.5 x 14.0 in.		
A6	105 x 148 mm		
A5	148 x 210 mm		
A4	210 x 297 mm		
ISO B5	176 x 250 mm		
B5 JIS	182 x 257 mm		
#10 Commercial	4.12 x 9.5 in.		
Monarch	3.87 x 7.5 in.		
DL	110 x 220 mm		
C5	162 x 229 mm		
B5	176 x 250 mm		
Custom	(W) x (H)	H > 11.7 in. / 297 mm	



- Print the "Paper Tips Page" for a complete listing.
- Go to [Reference/Printing/Supported Papers](#).

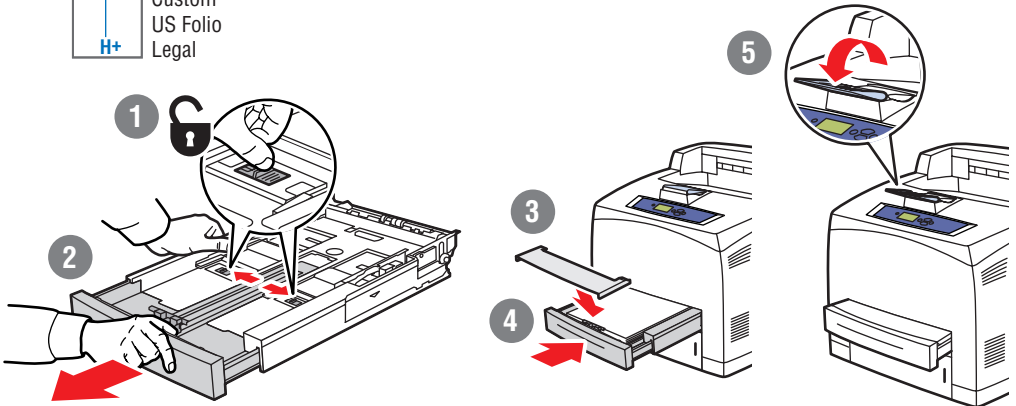


Basic Printing

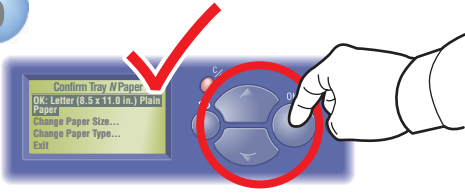


H > 11.7 in. / 297 mm

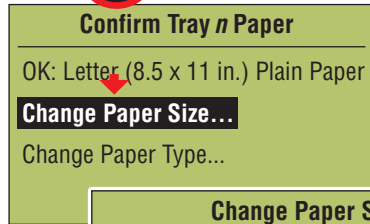
Custom
US Folio
Legal



5



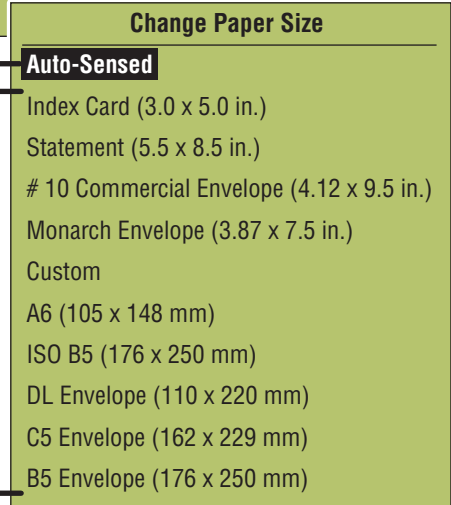
● **Confirm or change settings.**



● **Auto-Sensed sizes:**

Executive	7.25 x 10.5 in.
Letter	8.5 x 11.0 in.
US Folio	8.5 x 13.0 in.
Legal	8.5 x 14.0 in.
A5	148 x 210 mm
A4	210 x 297 mm
B5 JIS	182 x 257 mm

● **User-Selected sizes:**



6

PC



Mac



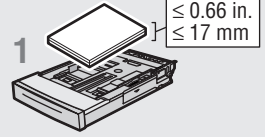
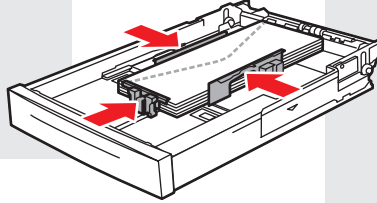
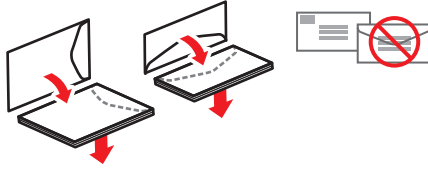
● **Use the Xerox printer driver for complete printing control.**

PC: Click the **Properties** button.

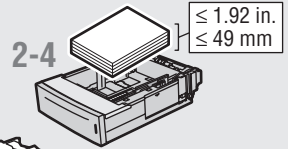
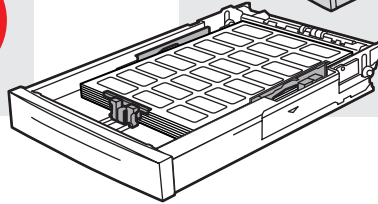
Mac: Use the pull-down menu.



Envelope

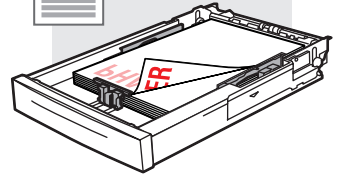
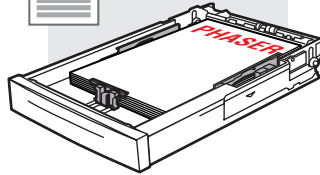


Labels

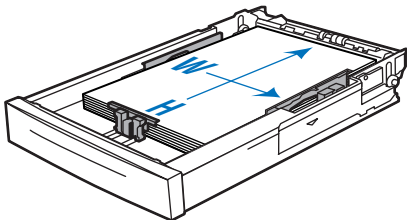


PHASER

Letterhead



Custom



Tray 1



3.0 – 8.5 in.
76 – 216 mm

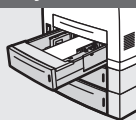
3.5 – 8.5 in.
90 – 216 mm



5.0 – 14.0 in.
127 – 356 mm

5.5 – 14.0 in.
140 – 356 mm

Tray 2-4



3.9 – 8.5 in.
98 – 216 mm

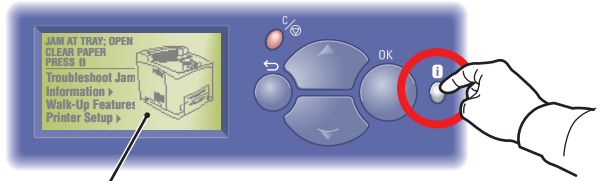
3.9 – 8.5 in.
98 – 216 mm



5.8 – 14.0 in.
148 – 356 mm

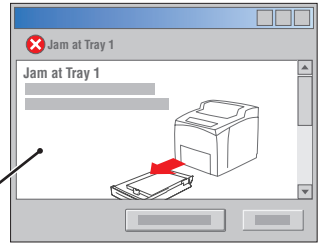
5.8 – 14.0 in.
148 – 356 mm

Paper Jams

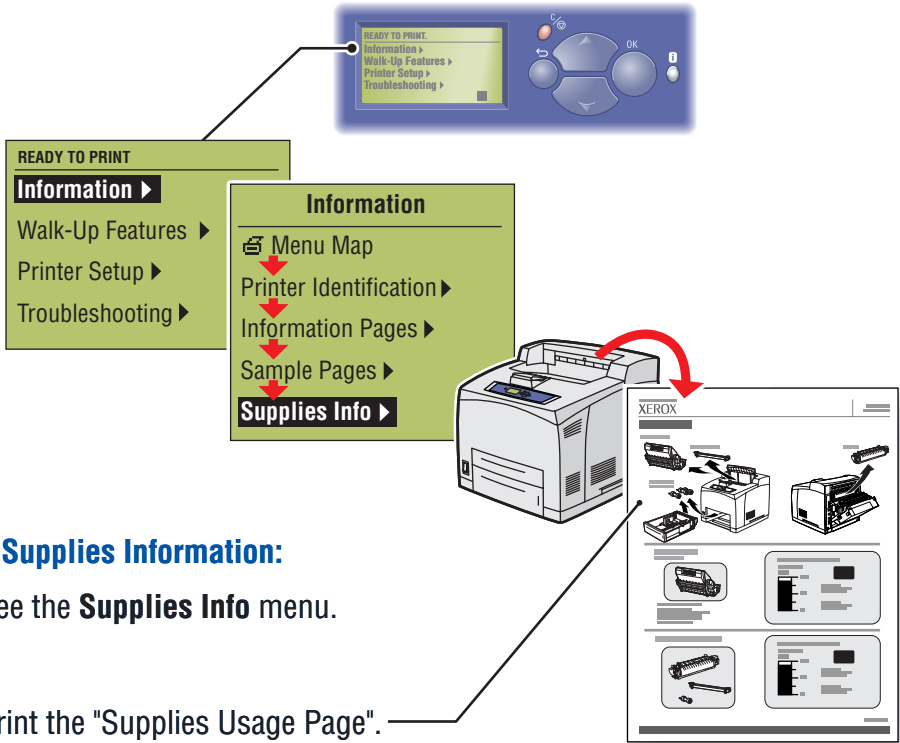


For jam clearing procedures:

- Press the **i-Button**.
- View **PrintingScout** message (PC only).
- Go to **Reference/Troubleshooting/Paper Jams**.



Supplies Info

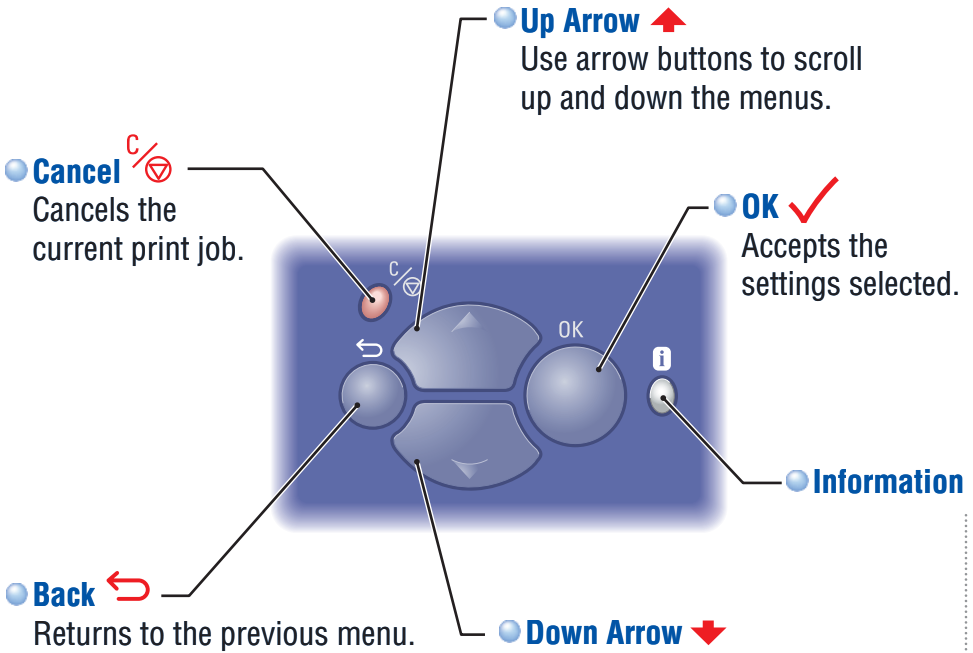


For Supplies Information:

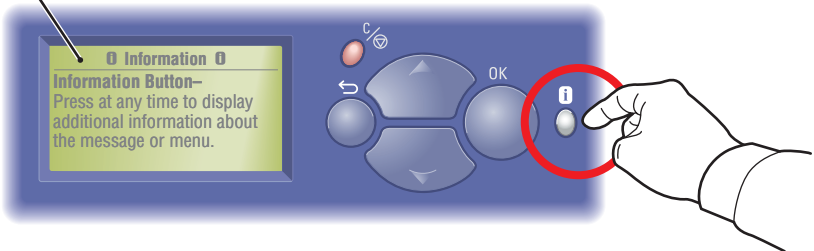
- See the **Supplies Info** menu.
- Print the "Supplies Usage Page".
- Contact your local reseller or visit the Xerox Phaser Supplies web site.

www.xerox.com/office/4500supplies

Front Panel Buttons



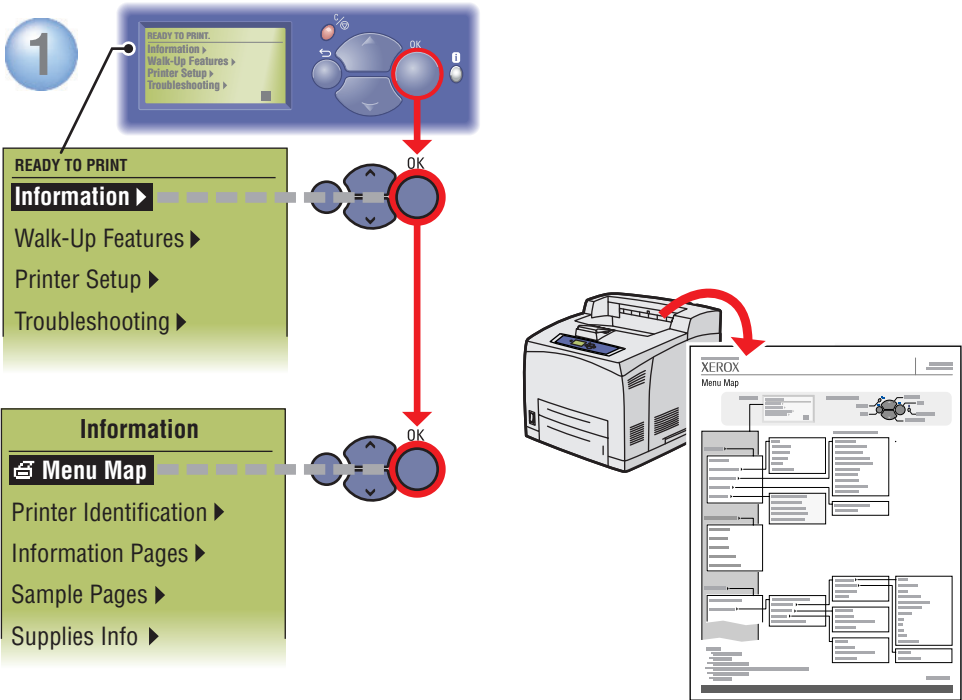
Information Button



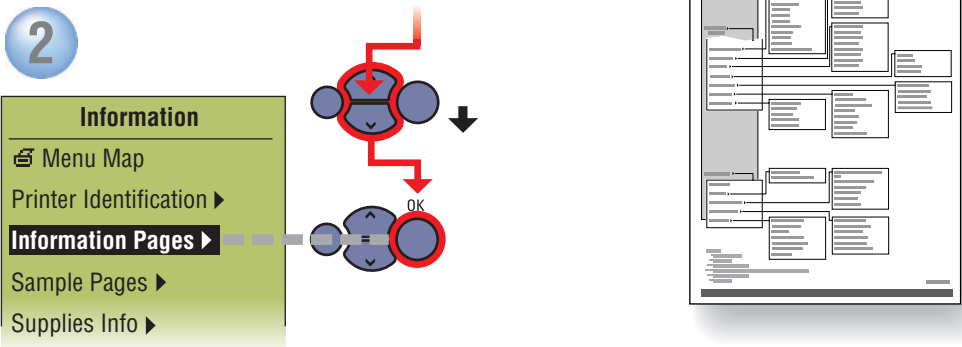
- **Press at any time to display additional information about the message or menu.**

Information Pages

Use the front panel to print information pages on a variety of subjects.



☞ = Prints an information page.



Information



www.xerox.com/office/4500support

Visit the Support web site for:

- Printer drivers
- Printer management software
- Troubleshooting help
- User manuals
- Instructional videos

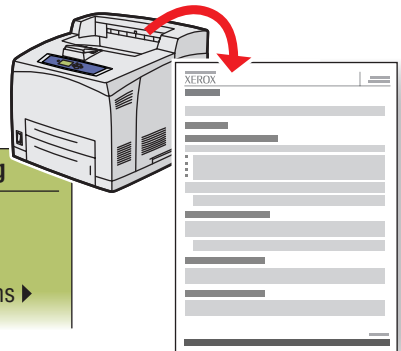
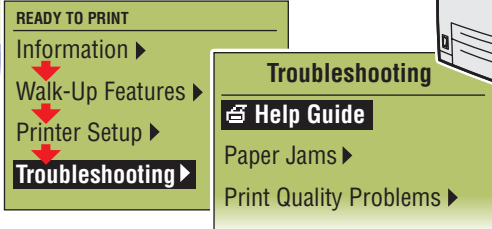


See the *User Documentation CD-ROM* for:

- User manuals
- Instructional videos
- Networking information



Print the "**Help Guide**" for a complete list of information resources.



www.colorconnection.xerox.com

Visit the **Color Connection** web site for templates, tips, and tutorials designed especially for Xerox printers.