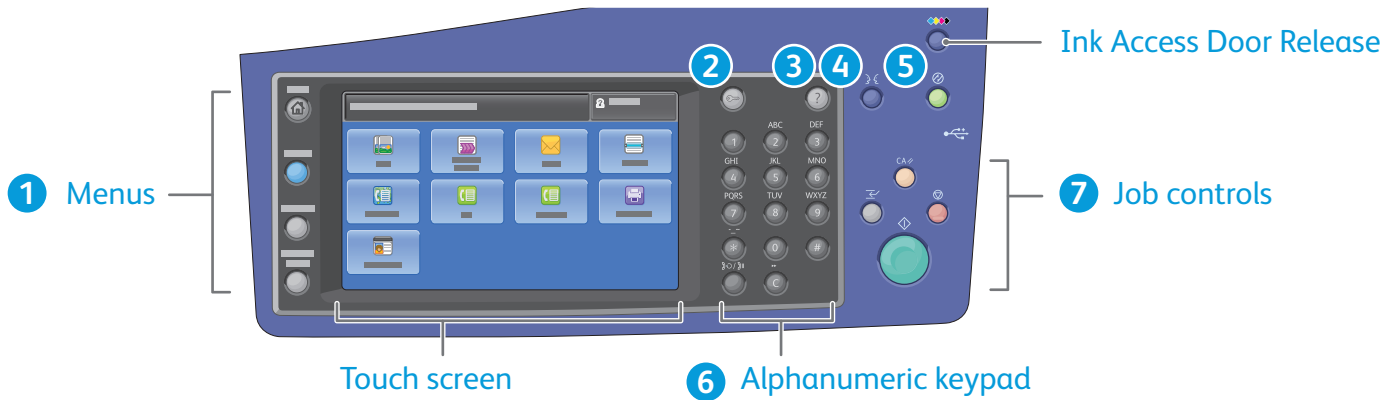


Xerox® ColorQube® 8700 / 8900

Control Panel



Available services can vary on your printer setup. For details about services and settings, see the *User Guide*.



1 **Menus**

- Services Home** displays main services, such as copy, scan, and fax.
- Services** returns to the active service from the Job Status or Machine Status screens, or to a preset service.
- Job Status** displays active, held, and completed jobs.
- Machine Status** displays settings and information.

2 **Log In/Out** accesses password-protected features.

3 **Help (?)** displays additional information about the current selection or service.

4 **Language** changes the touch screen language and keyboard settings.

5 **Power Saver** enters or exits Energy Saver mode or Quick Restart screen.

6 **Alphanumeric keys** are used for entering copy quantities, fax numbers, and other numeric information.

C (clear) deletes numeric values or the last digit entered.

Dial Pause inserts a pause in a telephone number when transmitting a fax.

7 **Clear All**

Interrupt Print

Stop

Start

Clear All clears previous and changed settings for the current service. Press twice to reset all defaults and clear existing scans.

Start starts the selected job.

Stop temporarily stops the current job. Follow the onscreen instructions to cancel or resume your job.

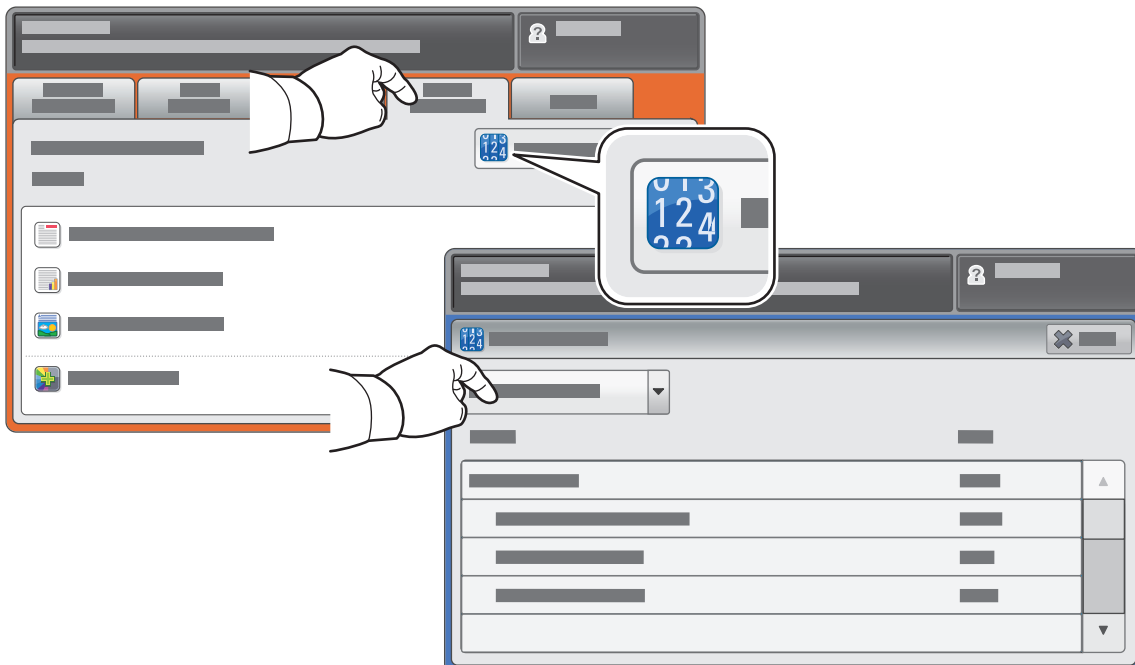
Interrupt Print pauses the currently printing job to run a more urgent job.

The Machine Status menu provides access to supplies status, printer information, and settings. Some menus and settings require log in using the administrator name and password.



Billing and Usage Information

In the Machine Status menu, touch the **Billing Information** tab for basic impression counts. Touch the **Usage Counters** button for detailed usage counts. The drop-down menu provides more count categories. See the *User Guide* for a detailed explanation of Color Levels 1–3.

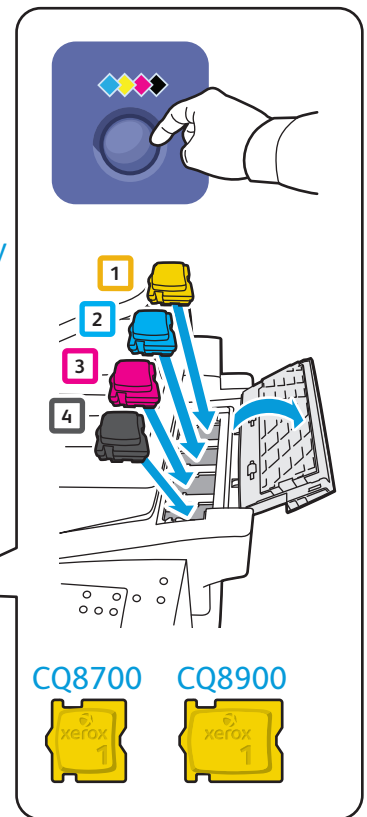
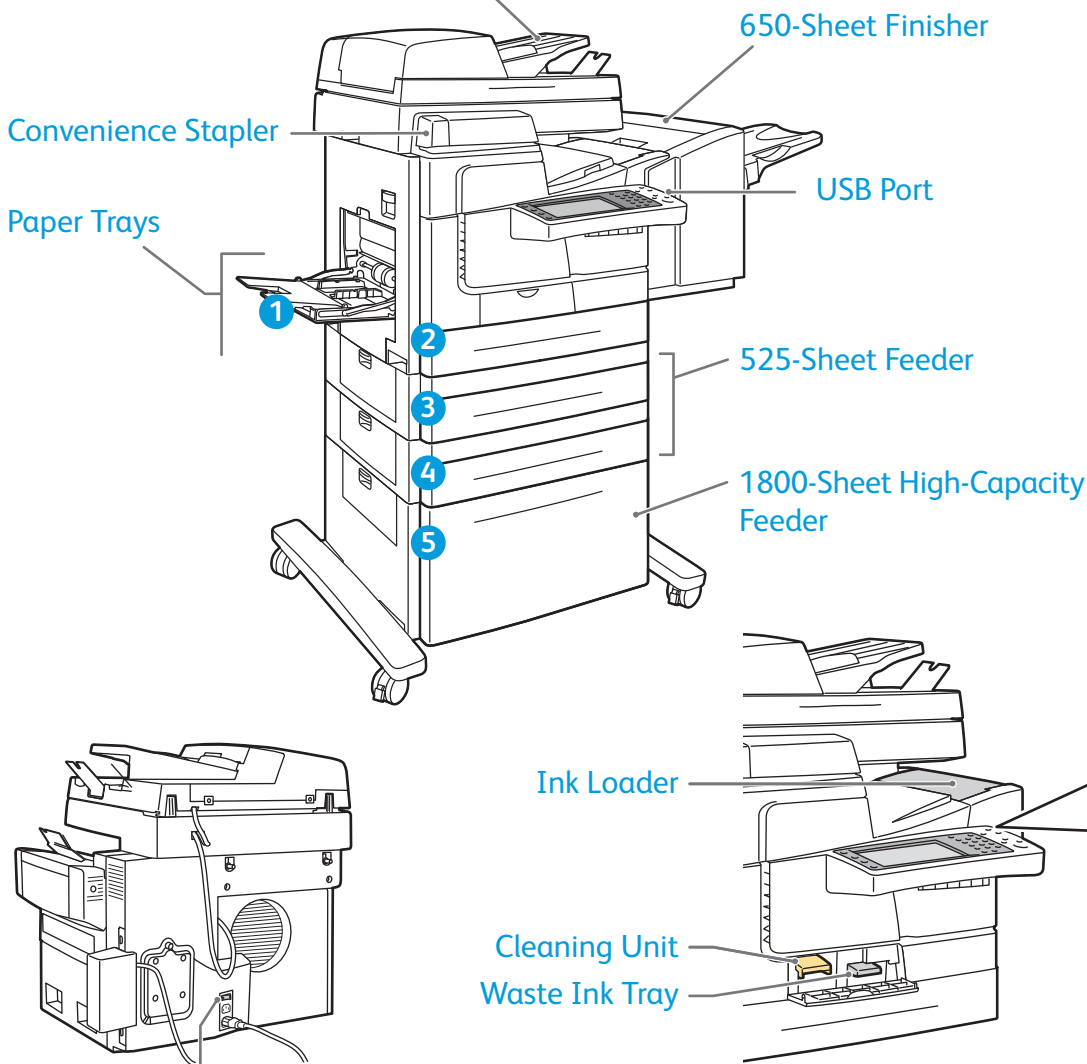


Xerox® ColorQube® 8700 / 8900 Printer Tour



Optional accessories can be part of your printer setup. For details, see the *User Guide*.

Duplex Automatic Document Feeder



Power Switch



To save ink, leave the printer turned on at all times. To restart using Quick Restart, press the **Power Saver** button to wake the printer if necessary, then press it again. Touch **Quick Restart** on the touch screen, then touch **Restart**. If the process does not begin within 30 seconds, restart using the power switch.

Xerox® ColorQube® 8700 / 8900

Paper Handling



For a complete list of paper that works with your printer, see the Recommended Media List at:

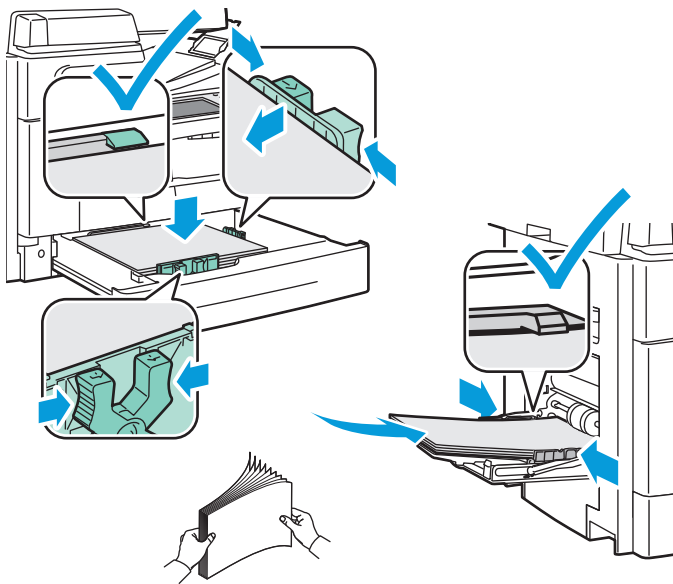
www.xerox.com/paper (U.S./Canada)

www.xerox.com/europaper

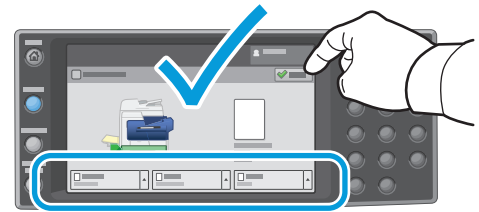
For details about trays and paper, see the *User Guide*.

Loading Paper

1

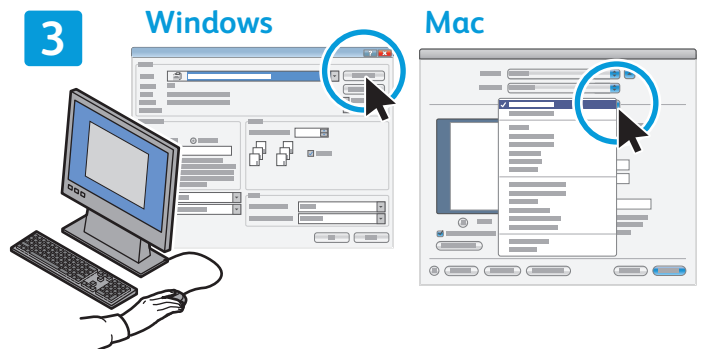


2



Confirm or change size and type settings as needed.

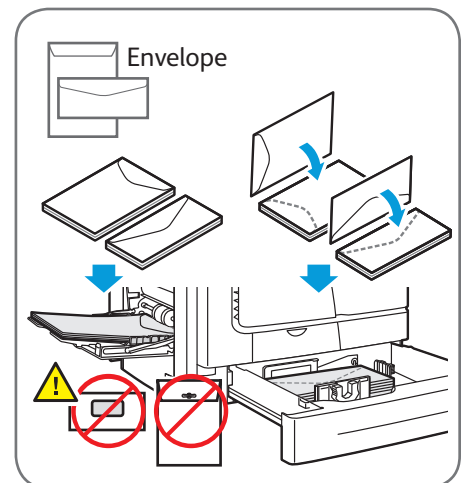
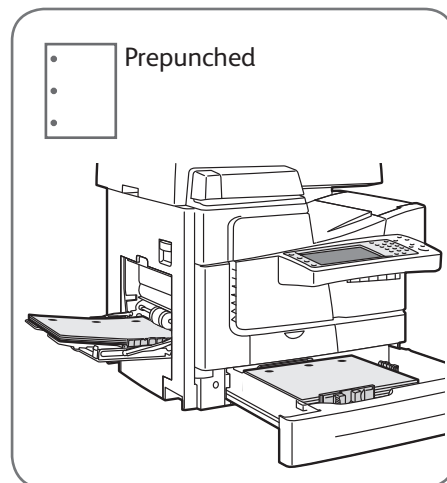
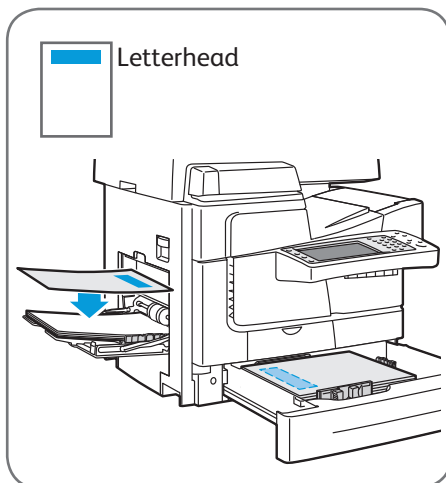
3



When printing, select options in the print driver.

For best results, fan the edges of the paper. Adjust guides to fit the paper size. Do not load paper above the maximum fill line.

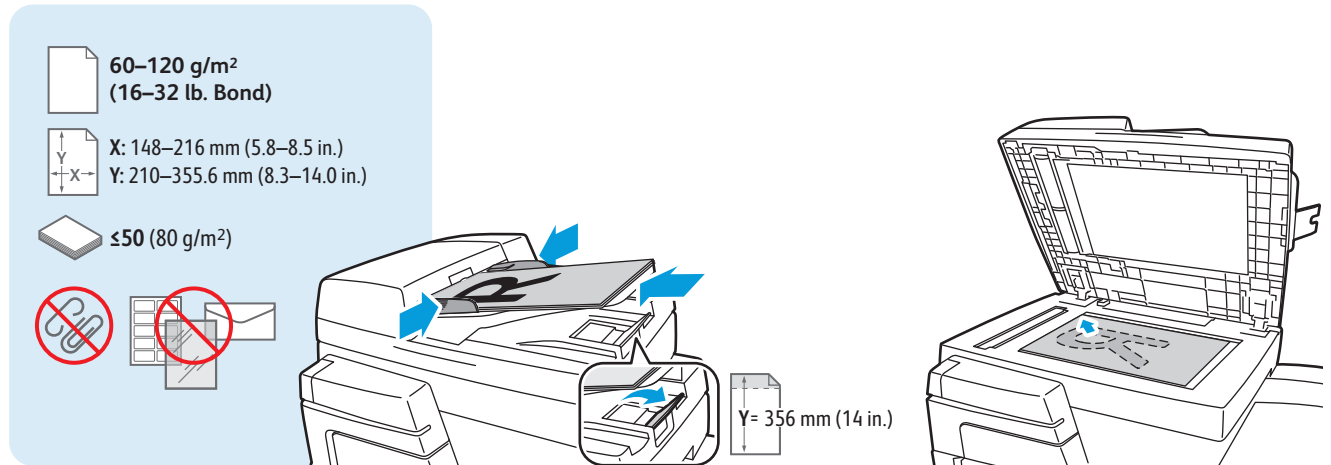
Paper Orientation



Copying

For details, see the *Copying* chapter in the *User Guide* located on your *Software and Documentation* disc or online.

1



Load the original.

2

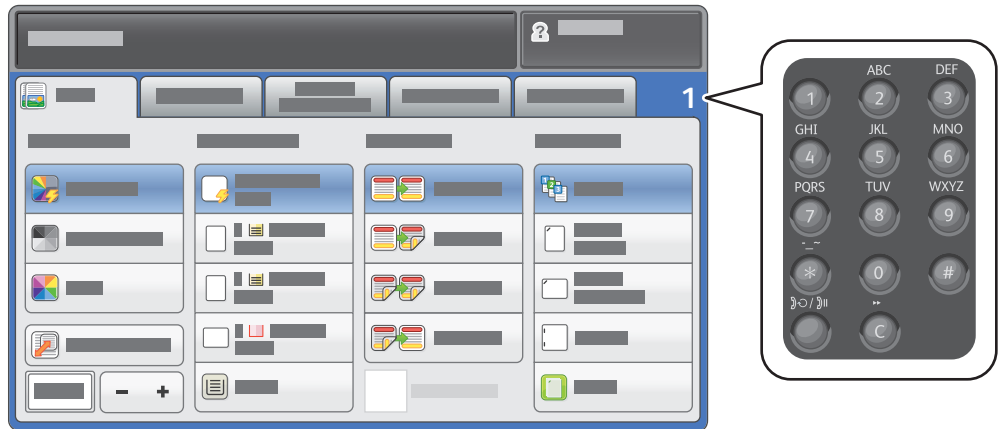


Press **Services Home**, then touch **Copy**.



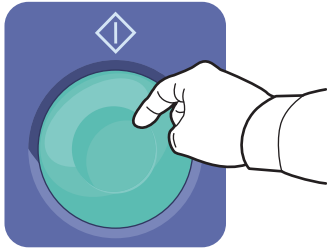
Clear All clears previous and changed settings for the current service.

3



Adjust the job quantity and select desired copy settings.

4



Press Start.



Stop temporarily stops the current job. Follow the onscreen message to cancel or resume your job.



Interrupt Print pauses the currently printing job to run a more urgent job.

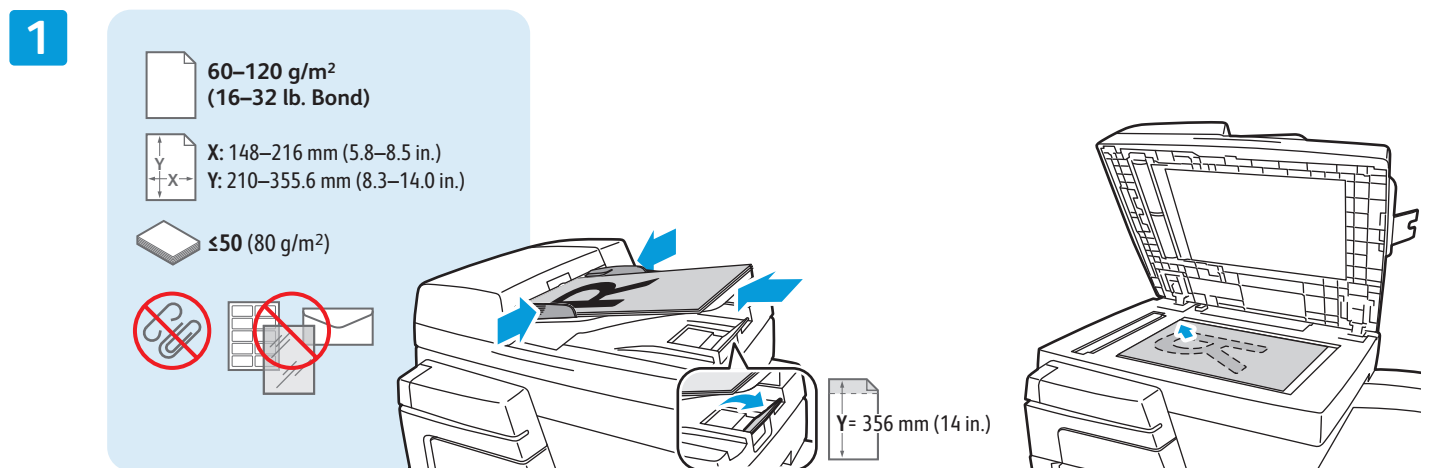
Scanning and Emailing

The printer is connected typically to a network rather than a single computer, so you select a destination for the scanned image at the printer.

This guide covers techniques to scan documents without preparing special setups:

- Scanning documents to an email address.
- Scanning documents to a saved Favorite, Address Book listing, or USB Flash drive.
- Scanning documents to the Public folder on the printer hard drive, and retrieving them using your Web browser.

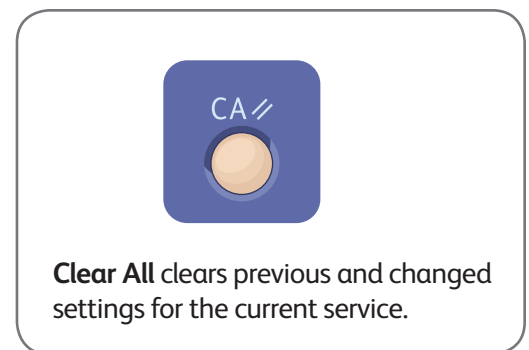
For details and more scan setups, see the *Scanning* chapter in the *User Guide*. For details about address book and workflow template setup, see the *System Administrator Guide*.



Load the original.



Press **Services Home**, then touch **Email** for emailing the scan, or **Workflow Scanning** to scan to the `_PUBLIC` folder or a USB Flash drive. Touch **Scan To** if your scan destination is stored in the Address Book or saved as a Favorite.



3

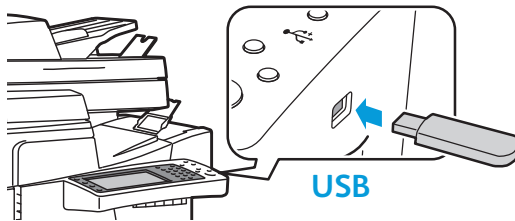


For Email, touch **New Recipient**, then enter the address using the touch screen keypad. Touch **+Add** to add addresses to the list, then touch **Close**.

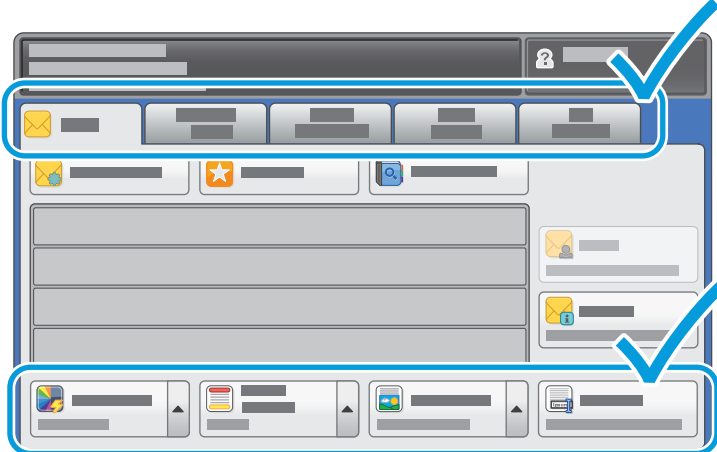
For Workflow Scanning, touch **_PUBLIC**, or insert your USB Flash drive and touch **USB**.

For Scan To, touch **Favorites** or **Address Book** to enter saved email addresses.

Use the Address Book or Favorites to enter saved email addresses.

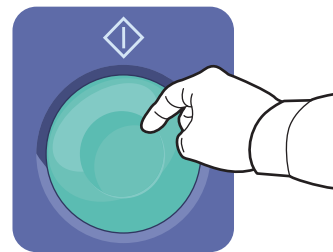


4

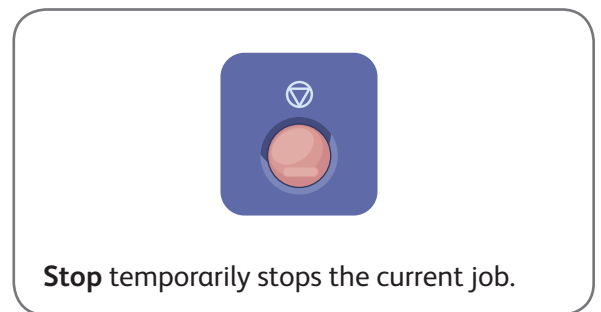


Change the settings as needed.

5



Press **Start**.



Stop temporarily stops the current job.

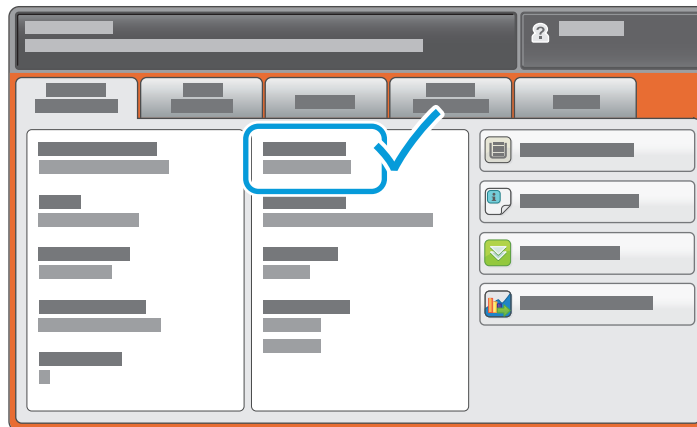
Retrieving Scan files

To retrieve your scanned images from the _PUBLIC folder, use CentreWare Internet Services to copy the scan files from the printer to your computer. You can also use CentreWare Internet Services to set up personal mailboxes and workflow scanning templates. For details, see the Help in CentreWare Internet Services.

1

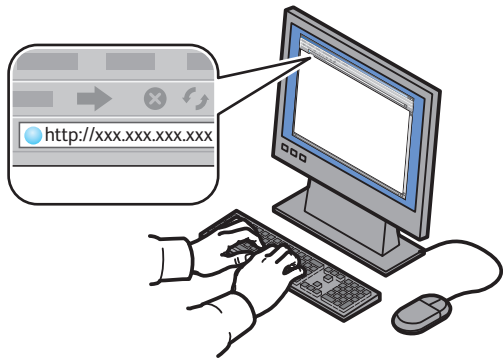


Note the printer IP address on the touch screen.

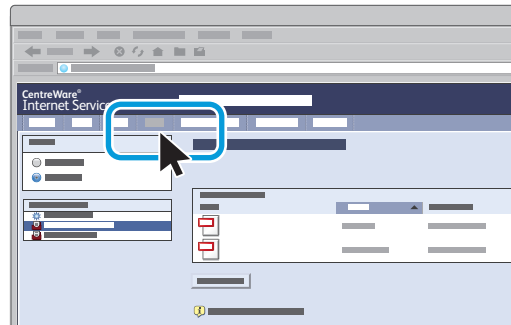


If the IP Address does not show in the upper left corner of the touch screen, press **Machine Status** and check the information field.

2



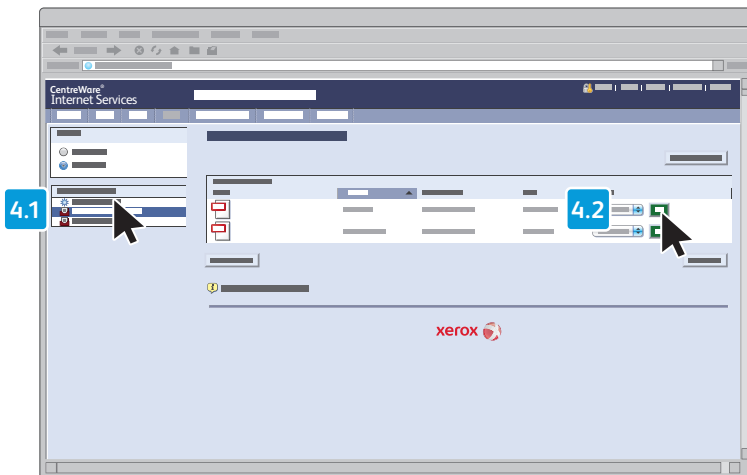
3



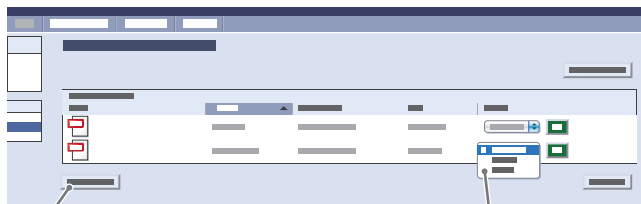
Type the printer IP address in a Web browser, then press **Enter** or **Return**.

Click the **Scan** tab.

4



Select the **Default Public Folder**, then click **Go** to download the scan.



Click **Update View** to refresh the list.

Select **Download** to save the file to your computer.

Select **Reprint** to print the saved file again.

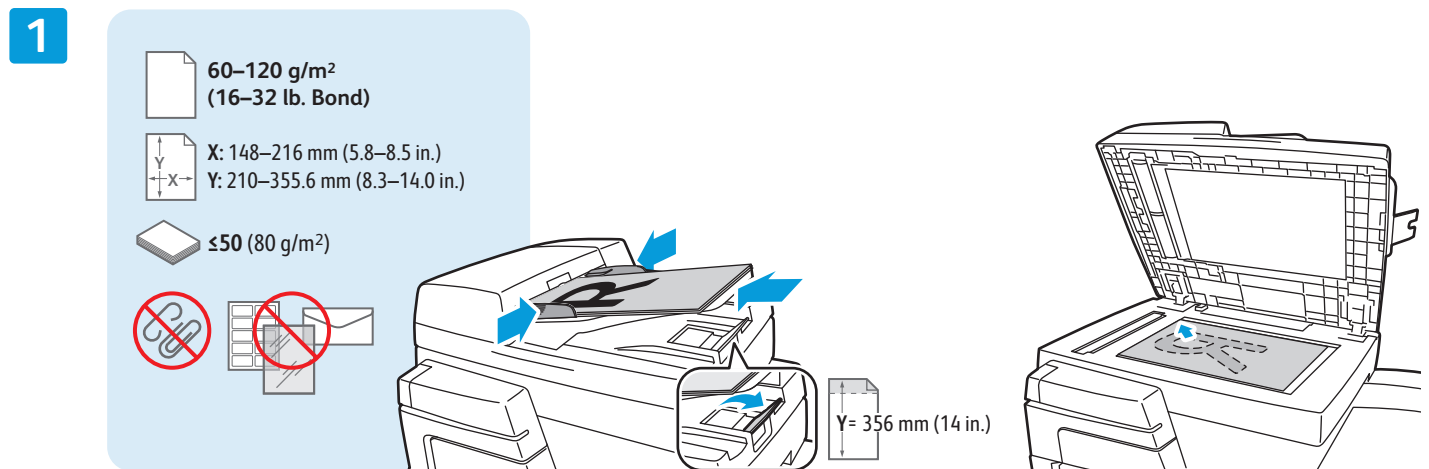
Select **Delete** to permanently remove the stored job.

Faxing

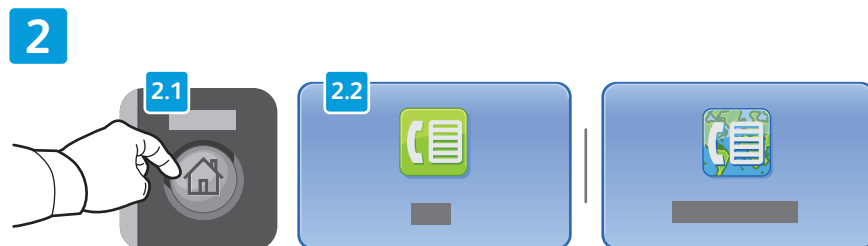
You can send a fax in one of four ways:

- **Embedded Fax** scans the document and sends it directly to a fax machine.
- **Server Fax** scans the document and sends it to a fax server, which transmits the document to a fax machine.
- **Internet Fax** scans the document and emails it to a recipient.
- **LAN Fax** sends the current print job as a fax.

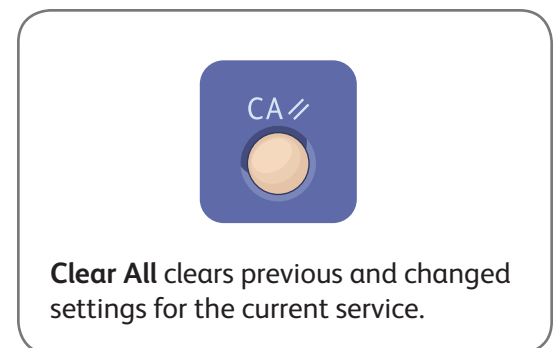
For details, see the *Faxing* chapter in the *User Guide*. For details about LAN Fax, see the print driver software. For details about fax setup and advanced settings, see the *System Administrator Guide*.

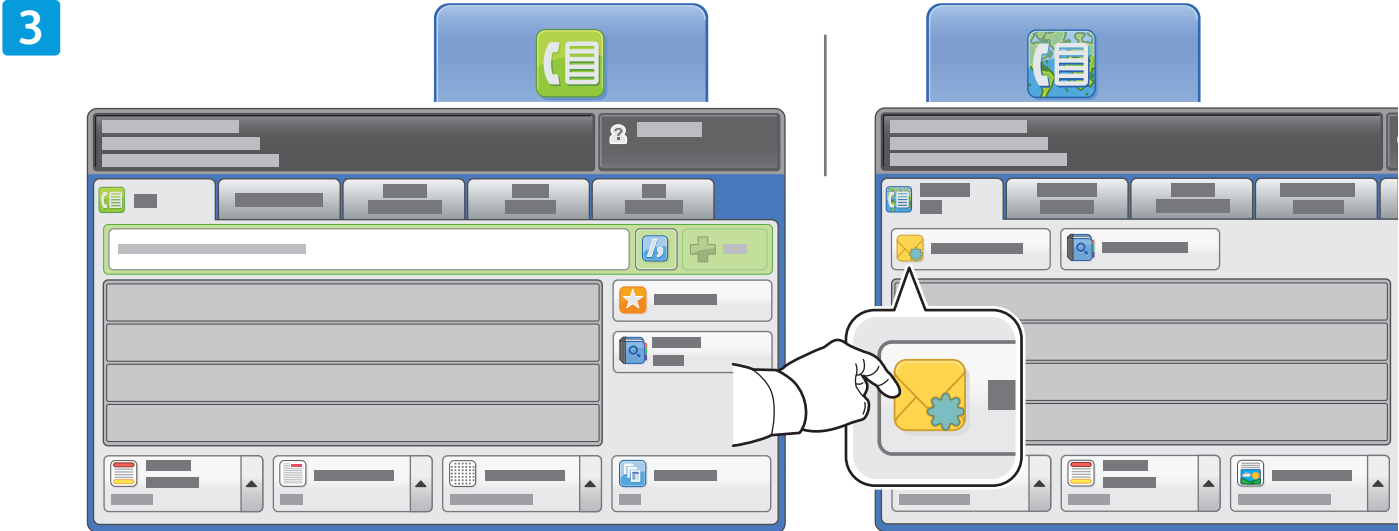


Load the original.



Press **Services Home**, then touch **Fax**, **Server Fax**, or **Internet Fax**.

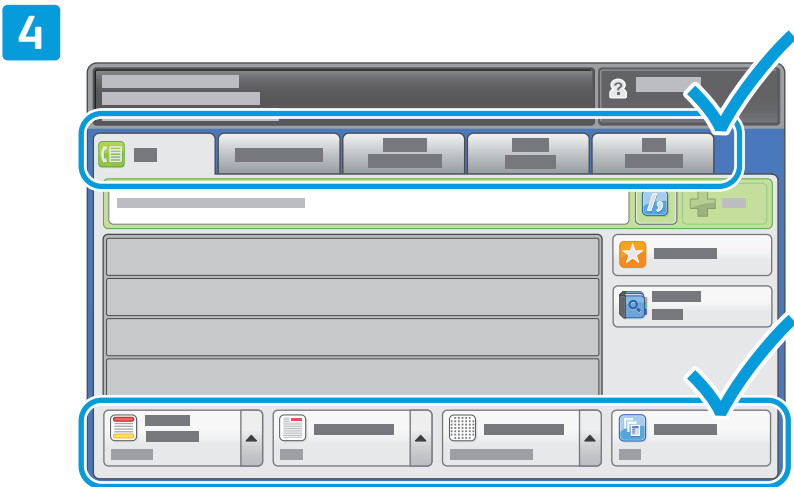




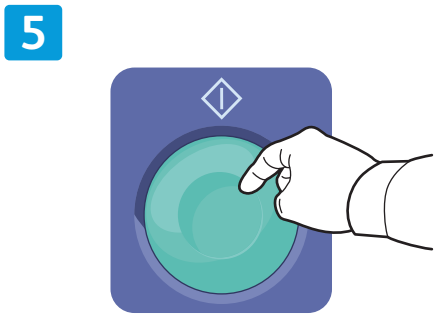
For fax numbers, use the alphanumeric keypad to enter fax numbers. Touch **Dialing Characters** to insert special characters. Touch **+Add** to add additional numbers.

For Internet Fax email addresses, touch **New Recipient**, then enter the address using the touch screen keypad. Touch **+Add** to add addresses to the list, then touch **Close**.

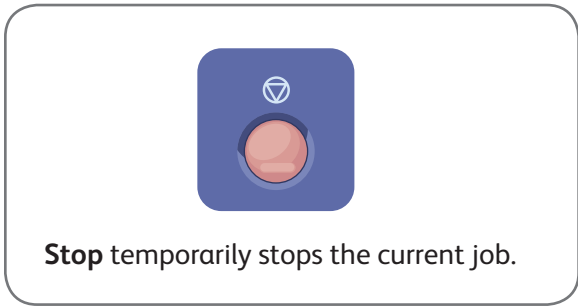
Use the Address Book or Favorites to enter stored numbers or email addresses.



Change the settings as needed.



Press **Start**.

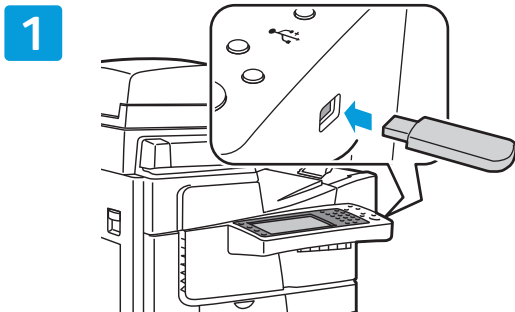


Xerox® ColorQube® 8700 / 8900

Printing from USB



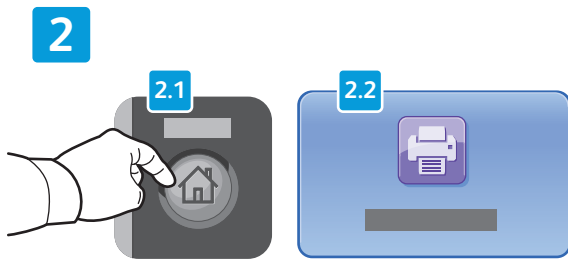
You can print .pdf, .tiff, .ps, and .xps files directly from a USB Flash drive. For more information, see the *Printing* chapter in the *User Guide* located on your *Software and Documentation* disc or online. To set up this feature, see the *System Administrator Guide*.



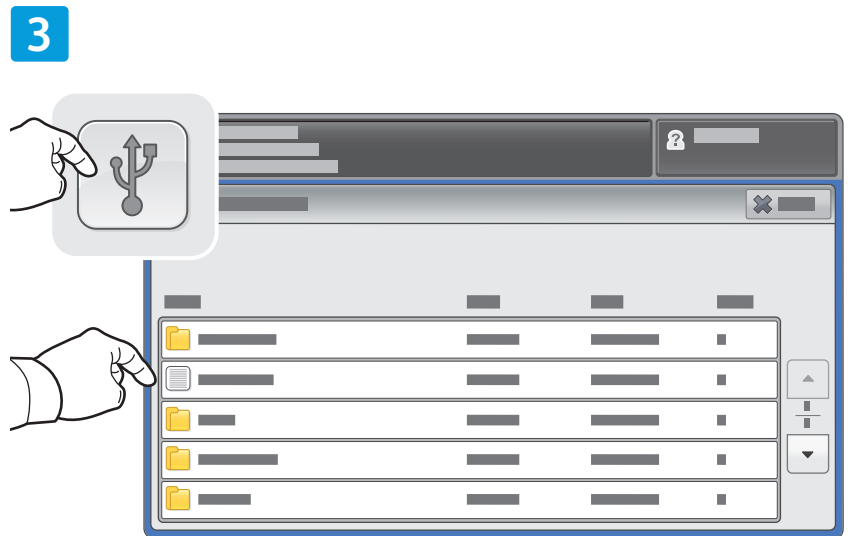
Insert USB Flash drive in the USB port.



Do not remove USB Flash drive during reading. Files may be damaged.

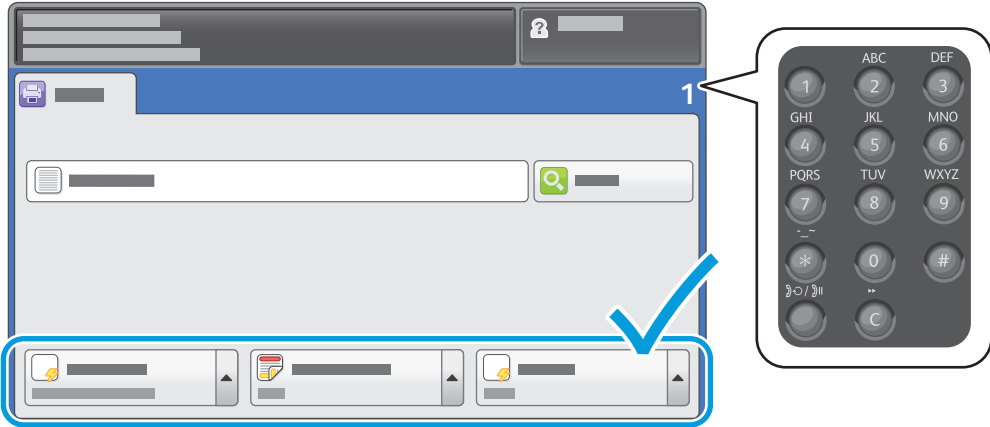


Press **Services Home**, then touch **Print From**.



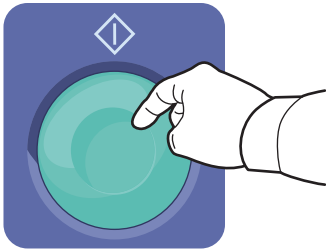
Touch **USB drive**, then select a file or folder.

4



Once the desired file is selected, adjust the job quantity and select desired print settings.

5



Press Start.

Stop temporarily stops the current job. Follow the onscreen message to cancel or resume your job.

Interrupt Print pauses the currently printing job to run a more urgent job.