

PostScript® User Guide

604P17454_EN



Prepared by:
The Document Company Xerox
GKLS European Operations
Bessemer Road
Welwyn Garden City
Hertfordshire
AL7 1HE
ENGLAND

© 2004 by Fuji Xerox Co., Ltd. All rights reserved.

Copyright protection claimed includes all forms and matters of copyrighted material and information now allowed by statutory or judicial law or hereinafter granted, including without limitations, material generated from the software programs which are displayed on the screen, such as icons, screen displays, looks etc.

Xerox[®], The Document Company[®], the digital X[®] and all Xerox products mentioned in this publication are trademarks of Xerox Corporation. Product names and trademarks of other companies are hereby acknowledged.

The information in this document is correct at the time of publication. Xerox reserves the right at any time to change the information without notice. Changes and technical updates will be added in subsequent editions of the documentation. For the latest information go to www.xerox.com.

Table of Contents

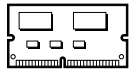
1	Checking the PostScript Kit Contents.....	5
2	Operation with Windows 95, Windows 98 and Windows Me	7
	About the Software	7
	Bundled Software	7
	Hardware/Software Requirements	8
	Computer System	8
	Basic Software	8
	Installing the AdobePS Printer Driver	8
	Installation Procedure	8
	Printer Driver Properties	9
	Configuration Tab Settings	10
	Settings	10
	Options Tab Settings	12
	Settings	12
	Output Settings Tab Settings	13
	Settings	13
	How to Use Help	14
3	Operation with Windows NT 4.0	15
	About the Software	15
	Bundled Software	15
	Hardware/Software Requirements	16
	Computer System	16
	Basic Software	16
	Installing the AdobePS Printer Driver	16
	Installation Procedure	16
	Device Options and Print Settings	17
	Device Settings Tab Settings	18
	Settings	18
	Configuration Tab Settings	19
	Settings	19
	Advanced Tab Settings	20
	Settings	20
	Output Settings Tab Settings	22
	Settings	22
	How to Use Help	22

4	Operation with Windows 2000, Windows XP and Windows Server 2003	23
	About the Software	23
	Bundled Software	23
	Hardware/Software Requirements	24
	Computer System	24
	Basic Software	24
	Installing the Printer Driver	24
	Installation Procedure	24
	Device Options and Print Settings	26
	Device Settings Tab Settings	27
	Settings	27
	Configuration Tab Settings	28
	Settings	28
	Advanced Options Dialog Box Settings	29
	Settings	29
	Output Settings Tab Settings	31
	Settings	31
	How to Use Help	31
5	Operation on Macintosh Computers.....	33
	About the Software	33
	Bundled Software	33
	Hardware/Software Requirements	34
	Computer System	34
	Basic Software	34
	Installing the AdobePS Printer Driver	34
	Installation Procedure (Mac OS 9.x or earlier)	34
	Setting the Printer Driver (Mac OS 9.x or earlier)	35
	Installation Procedure (Mac OS X)	37
	Installation Procedure	37
	Adding a Printer (Mac OS X)	37
	Procedure	37
	Printer options	39
	Options	39
	Printer Specific Options Settings	39
	For Mac OS 9.x and earlier	39
	For Mac OS X	40
	Settings	40
	Printer Driver Settings	41
	Settings	41
	Installing the Screen Fonts	43
6	Appendix	45
	Cautions and Limitations	45
	Troubleshooting	45
	Print operation	45
7	Index.....	47

1 Checking the PostScript Kit Contents

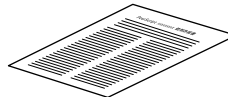
The devices and components of the kit are described below.

If any of the following are missing, contact the Xerox Welcome Center.



PostScript Program ROM

This ROM makes PostScript printing possible with the printer.



License Agreement



PostScript Logo Seal

This seal accompanies printers compatible with PostScript.



One PostScript Driver Library CD-ROM

Includes the PostScript drivers and screen fonts.

2 Operation with Windows 95, Windows 98 and Windows Me

The following information can be found in this chapter:

- About the Software
 - Bundled Software
 - Hardware/Software Requirements
- Installing the AdobePS Printer Driver
 - Installation Procedure
- Printer Driver Properties
 - Configuration Tab Settings
 - Options Tab Settings
 - Output Settings Tab Settings
- How to Use Help

About the Software

This section describes the software for Windows 95, Windows 98, and Windows Me that is included with the *PostScript Driver Library* CD-ROM.

Bundled Software

The following items are included on the enclosed CD-ROM.

AdobePS™ Printer Driver (ver. 4.5.3) and PPD files - Adobe PostScript driver and PPD files (for Windows 95/98/Me).

ATM (Adobe Type Manager) (ver. 4.0) - Helps you to install typefaces and activate and manage your fonts.

Adobe Screen Fonts (TrueType/PostScript) - Includes 136 screen fonts (19 TrueType fonts and 117 PostScript fonts), which are compatible with the printer fonts. ATM is used to install the PostScript screen fonts. When using these fonts to print, it is recommended that you use the Adobe PostScript (4.5.3) printer driver.

Adobe Acrobat Reader - Allows you to view and print PDF files on all major computing platforms.

Hardware/Software Requirements

The minimum system requirements for the Windows 95/Windows 98/Windows Me printer driver are described below.

Computer System

Personal computer in which the Windows 95/Windows 98/Windows Me OS can operate.

Basic Software

- Windows 95, Windows 98 or Windows Me

Installing the AdobePS Printer Driver

Install AdobePS 4.5.3 printer driver onto Windows 95, Windows 98 or Windows Me by following the procedure below.

This section describes how to install the printer driver for Windows 98, as an example. It is possible to cancel installation of the printer driver by clicking [Cancel] in the dialog box displayed during installation. You can also click [Back] to ignore the settings in that dialog box and return to the previous dialog box.

Installation Procedure

1. Start Windows 98.
2. On the Start menu, point to Settings and click [Printers].
3. In the Printers window, double-click [Add Printer].
4. Click [Next].
5. Select how the printer is connected to the computer and click [Next].
Select [Local printer] when the printer is connected directly to the computer. Otherwise, select [Network printer]. The following is an example of a local printer.

NOTE: When you select [Network printer], specify the path to the printer in the network path or queue name box.

6. Insert the PostScript Driver Library CD-ROM in your CD-ROM drive.
7. Click [Have Disk].
8. Enter "Drive Name:\English\PrinterDriver\win9x_Me" in the "Copy manufacturer's files from:" box and click [OK].
In this guide, we have used "E:" as the CD-ROM drive. If you are using a different drive for the CD-ROM, specify accordingly.

NOTE: Click [Browse] to specify a folder on the CD-ROM.

9. Select your printer model from the Printers list and click [Next].

10. Select the port that you are using and click [Next].
11. Type a name for the printer and specify whether you want to use the printer as the default printer, then click [Next].
12. Specify whether or not to print a test page, then click [Finish].
Installation begins.
13. Confirm that a printer has been added in the Printers window.
This completes installation of the printer driver. Remove the CD-ROM from the drive.
See *Printer Driver Properties* on page 9 to configure the printer.
Store your CD-ROM in a safe place.

Printer Driver Properties

This section describes printer specific settings included in the printer driver properties.

- Configuration Tab
- Options Tab
- Output Settings Tab

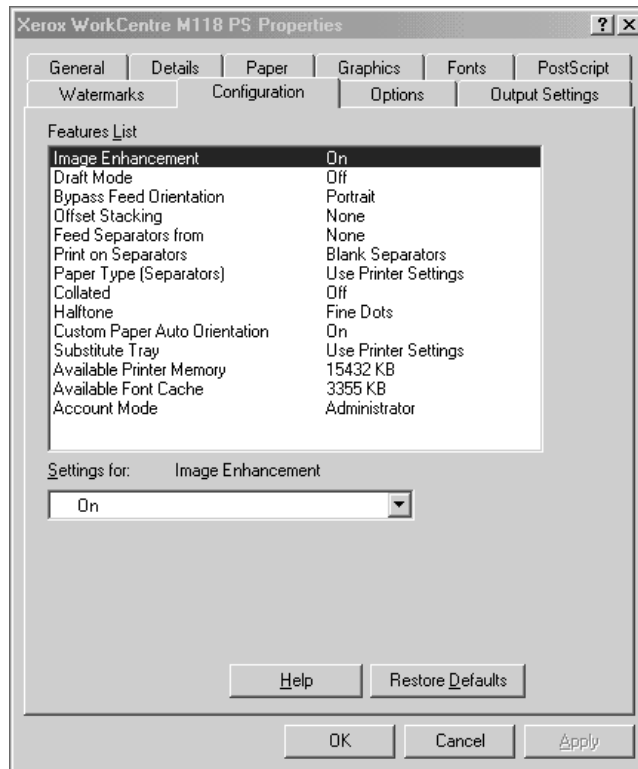
NOTE: You can also refer to Help for explanations of these settings. See *How to Use Help* on page 14 for details about how to use Help.

To view the printer driver properties, select the printer icon in the Printers window, then click [Properties] on the File menu.

Configuration Tab Settings

This section describes the settings of the Configuration tab.

Select the function that you want to set in the Features List and change the settings in the Change box below.



NOTE: You can restore defaults by clicking [Restore Defaults].

NOTE: The settings that can be selected vary depending on which options have been installed. Change these settings only after confirming that the option settings are complete. See *Options Tab Settings* on page 12.

Settings

Image Enhancement - Specifies whether or not to use the Image Enhancement function. Selecting [On] smooths out boundaries when printing. This reduces jagged edges by artificially increasing the resolution of the image. When printing a bitmapped image composed of coarse halftone dots, smooth color gradation is impossible in certain situations. In this case, select [Off].

Draft Mode - Specifies whether or not to reduce the amount of toner used when printing drafts. When [On] is selected, the overall printed color becomes lighter. This is best for printing documents when high print quality is not necessary.

Bypass Feed Orientation - Specifies the paper orientation when printing from the bypass tray. When feeding the short edge of the paper first, select [Landscape]. When feeding the long edge of the paper, select [Portrait].

Offset Stacking - The position of individual jobs or sets of copies are shifted to either side of the output tray to enable easy separation.

Feed Separators from - Specifies the paper tray that transparency dividers are to be fed from. When [Auto] is selected, the tray set on the machine is used as the feed destination.

Print on Separators - Specifies whether or not to print on the transparency dividers as well as the transparency.

Paper Type (Separators) - Specifies a paper type for the transparency divider.

Collated - Selects whether to collate a multiple-page file per set when they are printed.

Halftone - Select the halftone settings for printing.

Select [Fine Dots] for the small size halftone dot commonly used in PostScript.

Select [Thick Dots] for coarser dots than the Fine Dots setting.

Select [Type 3] for the same halftone setting that is used in PCL.

Custom Paper Auto Orientation - Specifies whether or not to correct the orientation of the custom paper.

Substitute Tray - Specifies what action to take when the paper for the print size is not loaded in the machine.

Use Printer Settings - Use the printer settings. The settings can be confirmed on the control panel.

Display Message - Display paper supply messages on the control panel. Printing is impossible until paper is supplied.

Use Nearest Size (Adjust to Fit) - Selects the nearest paper size and automatically adjusts the image size as necessary.

Use Nearest Size (No Zoom) - Selects the nearest paper size and prints the same size as the image.

Use Larger Size (Adjust to Fit) - Selects paper larger than the original and automatically adjusts the image size as necessary.

Use Larger Size (No Zoom) - Selects paper larger than the original and prints the same size as the image.

Available Printer Memory - Enter the amount of usable printer memory (in KB) in the Edit box. Usually, it is not necessary to change this.

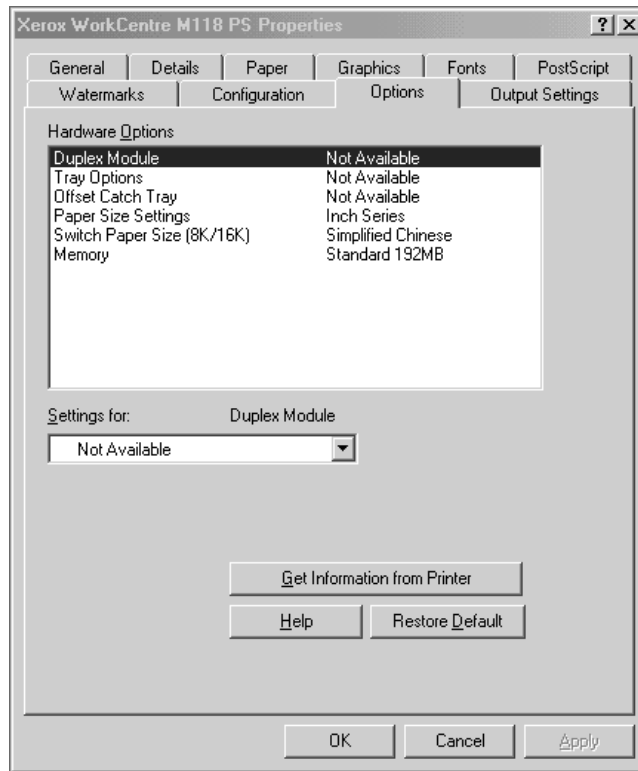
Available Font Cache - Enter the amount of memory available for the font cache (in KB) in the Edit box. Usually, it is not necessary to change this.

Account Mode - Specifies if all users or only Administrators can change authentication related settings.

Options Tab Settings

This section describes the settings in the Options tab.

Select the items in Hardware Options and change them in the change box below. To use this function, it is necessary to make appropriate settings in this tab.



NOTE: You can restore defaults by clicking [Restore Default].

Settings

Duplex Module - Specifies whether a duplex unit is installed. Select Installed when the duplex unit is installed. When you select Installed, it is possible to select the Duplex feature in the Paper tab.

Tray Options - Specifies the paper tray type installed on the machine. When [2-Tray Configuration] is selected, Tray 1 and Tray 2 can be used. When [4-Tray Configuration] is selected, Tray 1 to Tray 4 can be used.

Offset Catch Tray - Specifies whether an offset catch tray is installed. Select Installed when an offset catch tray is installed. When you select Installed, it is possible to set Job Offset in the Configuration tab.

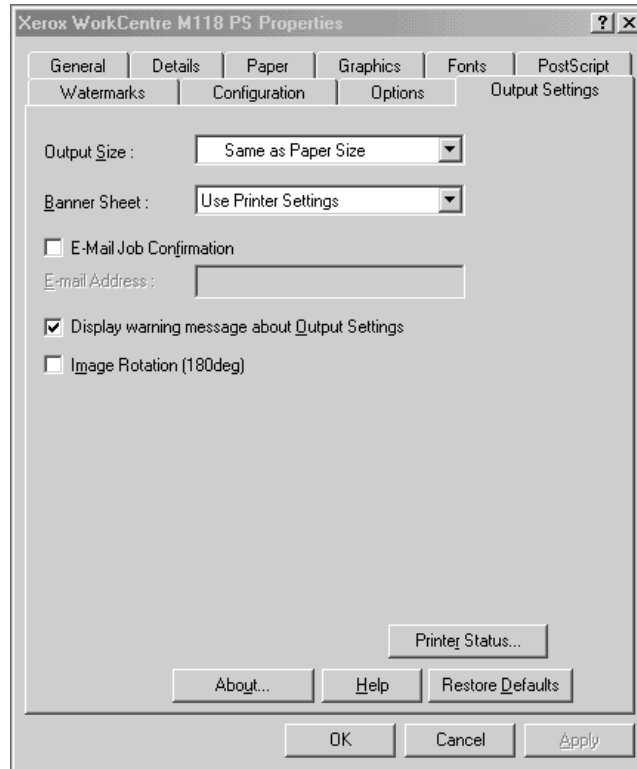
Paper Size Settings - Specifies the paper size group for different areas to enable the selection of paper size common to that location.

Switch Paper Size (8K/16K) - Indicate your language preference to enable the set of 8K and 16K paper size that is best suited to your needs.

Memory - Displays the amount of printer memory.

Output Settings Tab Settings

This section describes the settings in the Output Settings tab.



NOTE: You can restore defaults by clicking [Restore Defaults].

Settings

Output Size - Selects the size of the paper used for output. The output is automatically enlarged or reduced, depending on the paper size selected here and the paper size selected in the Paper tab.

For example, when you select [B5] in Paper Size on the Paper tab, and select [A4] as the Output Size, the output is automatically enlarged and printed.

When you select [None], the job is printed based on the Paper Size selected in the application.

Banner Sheet - Specifies whether or not to add a banner sheet to printed output.

When [Use Printer Settings] is selected, the printer settings are used.

When [Printer Start Page] is selected, outputs the banner sheet using the first sheet.

E-Mail Job Confirmation - Specifies whether or not to use the Mail Notify feature to notify the end of the print job via e-mail. Default is [Off].

E-Mail Address - Specifies the e-mail address for the Mail Notify feature.

Display warning message about Output Settings - When printing, the printer driver checks whether the Output Size setting conflicts with other settings.


When this is activated, a conflict dialog box appears if there is non-conformity during printing. Check the content of the dialog box and resolve the conflicting function to continue printing.

When this is inactive, no conflict dialog box appears, but the conflicting setting is automatically resolved and printing continues.

Image Rotation (180deg) - Set the checkbox to rotate the prints by 180°. Default is [Off].

How to Use Help

The following describes how to use Help.

1. Click  and a ? mark appears next to the pointer. You can then click items for which you need explanations, opening a pop-up window that contains relevant information. Click inside the pop-up window to close it.
2. Click [Help], an explanation of the current tab appears as Help information.

3 Operation with Windows NT 4.0

The following information can be found in this chapter:

- About the Software
 - Bundled Software
 - Hardware/Software Requirements
- Installing the AdobePS Printer Driver
 - Installation Procedure
- Device Options and Print Settings
 - Device Settings Tab Settings
 - Configuration Tab Settings
 - Advanced Tab Settings
 - Output Settings Tab Settings
- How to Use Help

About the Software

This section describes the software for Windows NT 4.0 that is included on the PostScript Driver Library CD-ROM.

Bundled Software

The following items are included on the CD-ROM.

AdobePS™ Printer Driver (ver. 5.2.2) and PPD files - Adobe PostScript driver and PPD files (for Windows NT 4.0).

ATM (Adobe Type Manager) (ver. 4.0) - Helps you to install typefaces and activate and manage your fonts.

Adobe Screen Fonts (TrueType/PostScript) - Includes 136 screen fonts (19 TrueType fonts and 117 PostScript fonts), which are compatible with the printer fonts. ATM is used to install the PostScript screen fonts. When using these fonts to print, it is recommended that you use the Adobe PostScript (5.2.2) printer driver.

Adobe Acrobat Reader - Allows you to view and print PDF files on all major computing platforms.

Hardware/Software Requirements

The minimum system requirements for the Windows NT 4.0 printer driver are described below.

Computer System

Personal computer on which the Windows NT 4.0 operating system can operate.

Basic Software

Windows NT Workstation 4.0/Windows NT Server 4.0 (Service Pack 6a or later)

Installing the AdobePS Printer Driver

Install the AdobePS 5.2.2 printer driver onto Windows NT by following the procedure below.

It is possible to cancel installation of the printer driver by clicking [Cancel] in the dialog box displayed during installation. You can also click [Back] to delete the settings in that dialog box and return to the previous dialog box.

Installation Procedure

1. Start Windows NT 4.0.

NOTE: Log on as a Power User group member or an Administrator. Refer to the Windows NT 4.0 documentation for details about the Power User group.

2. On the Start menu, point to Settings and click [Printers].
3. In the Printer window, double-click [Add Printer].
4. Select how the printer is connected to the computer and click [Next]. Select [My Computer] if the printer is connected directly to the computer or to the network in the TCP/IP(LPD) environment. Select [Network printer server] in other cases. The following is an example of a local printer.

NOTE: Specify the target printer in the Connect to Printer dialog box if you selected [Network printer server].

5. Select the port you are using and click [Next].
6. Insert the PostScript Driver Library CD-ROM in the CD-ROM drive.
7. Click [Have Disk].
8. Enter "Drive Name:\English\PrinterDriver\NT40" in the "Copy manufacturer's files from:" box and click [OK].
In this guide, we have used "E:" as the CD-ROM drive. If you are using a different drive for the CD-ROM, specify accordingly.

NOTE: Click [Browse] to specify a folder on the CD-ROM.

9. Select your printer model from the Printers list and click [Next].
10. Enter the printer name, specify if you want to use the printer as the default printer, and click [Next].
11. Select [Not shared] and click [Next].

We recommend that you install the driver on each computer with the procedure appropriate to the Operating System.

12. Specify whether or not to print a test page, then click [Finish].

Installation begins.

13. Confirm that the printer has been added in the Printers window.

This completes installation of the printer driver. Remove the CD-ROM from the drive.

See *Device Options and Print Settings on page 17* to configure the printer.

Store your CD-ROM in a safe place.

Device Options and Print Settings

This section describes printer specific settings for printer driver properties and document presets.

- Installable Options in the Device Settings Tab
- Configuration Tab
- Printer Specific Sections in the Device Settings of the Advanced Tab
- Output Settings Tab

NOTE: You can also refer to Help for explanations of these settings. See *How to Use Help on page 22*.

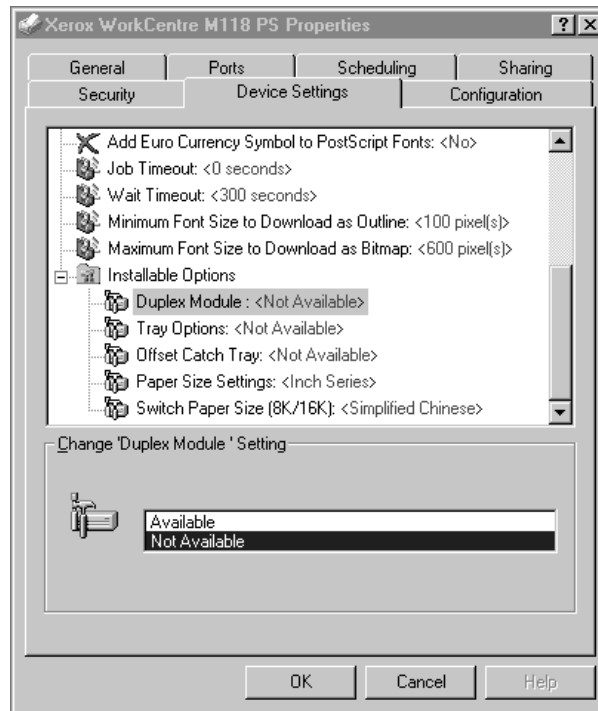
To view the Device Settings or Configuration tabs, select the printer icon in the Printers window, then click Properties on the File menu.

To view the Advanced or Output Settings tabs, select the printer icon in the Printers window, then click Document Defaults on the File menu.

Device Settings Tab Settings

This section describes Installable Options in the Device Settings tab. To print correctly, it is necessary to make appropriate settings in this tab.

Select the items in Installable Options and change the settings in the Change Setting box at the bottom of the tab.



Settings

Duplex Module - Specifies whether a duplex unit is installed. Select Installed when the duplex unit is installed. When you select Installed, it is possible to select the Duplex feature in the Paper tab.

Tray Options - Specifies the paper tray type installed on the machine. When [2-Tray Configuration] is selected, Tray 1 and Tray 2 can be used. When [4-Tray Configuration] is selected, Tray 1 to Tray 4 can be used .

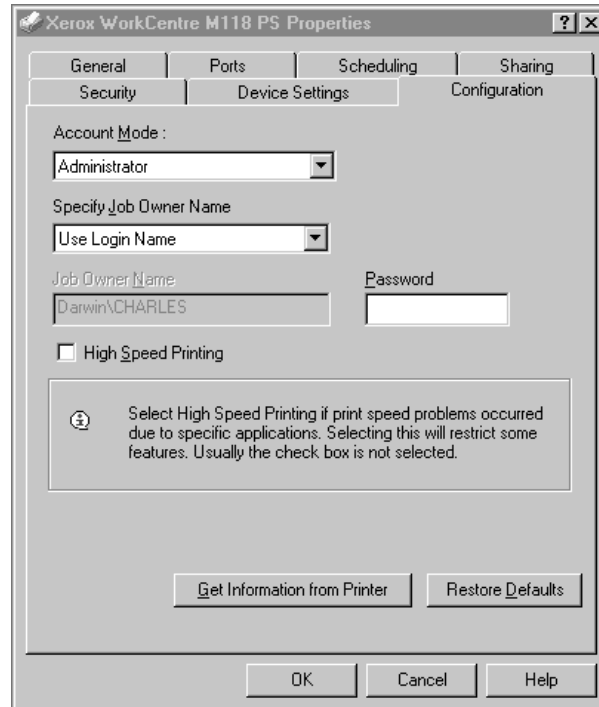
Offset Catch Tray - Specifies whether an offset catch tray is installed. Select Installed when an offset catch tray is installed. When you select Installed, it is possible to set Job Offset in the Configuration tab.

Paper Size Settings - Specifies the paper size group for different areas to enable the selection of paper size common to that location.

Switch Paper Size (8K/16K) - Indicate your language preference to enable the set of 8K and 16K paper size that is best suited to your needs.

Configuration Tab Settings

This section describes the settings of the Configuration tab.



NOTE: You can restore defaults by clicking [Restore Defaults].

Settings

Account Mode - Specifies if all users or only Administrators can change authentication related settings.

Specify Job Owner Name - Select how to specify User ID.

Job Owner Name - Enter a User ID.

Password - Enter a Password that matches the User ID.

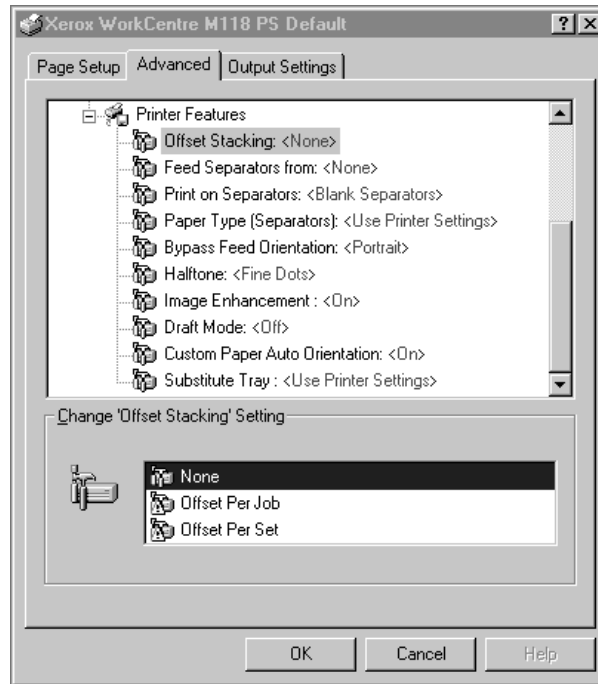
High Speed Printing - Set this feature to make improvements in print speed, when using an application that generates PostScript directly.

Get Information from Printer - Clicking [Get Information from Printer] when the machine is used as a network printer verifies the printer option installation state using the printer port to which the printer is connected, and reflects this in the Hardware Options setting.

Advanced Tab Settings

This section describes the settings of Printer Features in the Advanced tab.

Select the items from Printer Features under Document Options of the Advanced tab and change the settings in the Change Setting box at the bottom of the tab.



NOTE: The settings that can be selected vary depending on which options have been installed. Change these settings only after confirming that the option settings are complete. See *Device Settings Tab Settings on page 18*.

Settings

Offset Stacking - The position of individual jobs or sets of copies are shifted to either side of the output tray to enable easy separation.

Feed Separators from - Specifies the paper tray that transparency dividers are to be fed from. When [Auto] is selected, the tray set on the machine is used as the feed destination.

Print on Separators - Specifies whether or not to print on the transparency dividers as well as the transparency.

Paper Type (Separators) - Specifies a paper type for the transparency divider.

Bypass Feed Orientation - Specifies the paper orientation when printing from the bypass tray. When feeding the short edge of the paper first, select [Landscape]. When feeding the long edge of the paper, select [Portrait].

Halftone - Specifies the halftone settings for printing.

Select [Fine Dots] for the small size halftone dot commonly used in PostScript.

Select [Thick Dots] for coarser dots than the Fine Dots setting.

Select [Type 3] for the same halftone setting that is used in PCL.

Image Enhancement - Specifies whether or not to use the Image Enhancement function. Selecting [On] smooths out boundaries when printing. This reduces jagged edges by artificially increasing the resolution of the image. When printing a bitmapped image composed of coarse halftone dots, smooth color gradation is impossible in certain situations. In this case, select [Off].

Draft Mode - Specifies whether or not to reduce the amount of toner used when printing drafts. When [On] is selected, the overall printed color becomes lighter. This is best for printing documents when high print quality is not necessary.

Custom Paper Auto Orientation - Specifies whether or not to correct the orientation of the custom paper.

Substitute Tray - Specifies what action to take when the paper for the print size is not loaded in the machine.

Use Printer Settings - Use the printer settings. The settings can be confirmed on the control panel.

Display Message - Display paper supply messages on the control panel. Printing is impossible until paper is supplied.

Use Nearest Size (Adjust to Fit) - Selects the nearest paper size and automatically adjusts the image size as necessary.

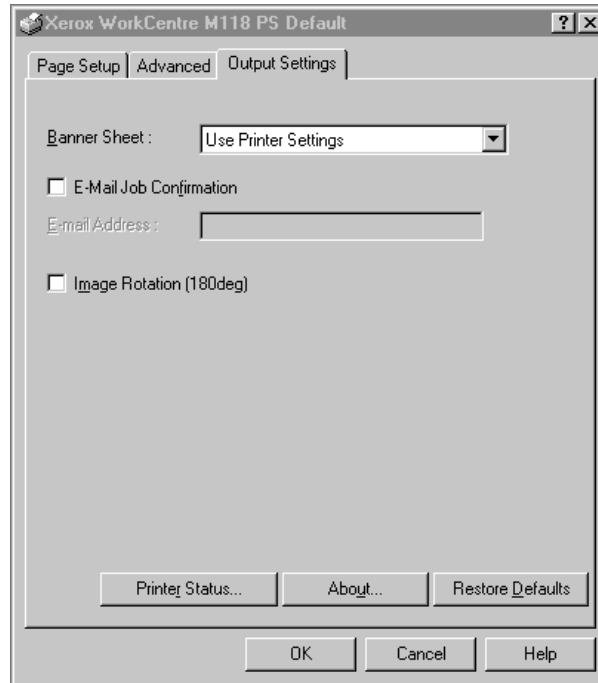
Use Nearest Size (No Zoom) - Selects the nearest paper size and prints the same size as the image.

Use Larger Size (Adjust to Fit) - Selects paper larger than the original and automatically adjusts the image size as necessary.

Use Larger Size (No Zoom) - Selects paper larger than the original and prints the same size as the image.

Output Settings Tab Settings

This section describes the settings in the Output Settings tab.



NOTE: You can restore defaults by clicking [Restore Defaults].

Settings

Banner Sheet - Specifies whether or not to add a banner sheet to the printed output. When [Use Printer Settings] is selected, the printer settings are used.

When [Printer Start Page] is selected, outputs the banner sheet using the first sheet.


E-mail Job Confirmation - Specifies whether or not to use the Mail Notify feature to notify the end of the print job via e-mail. Default is [Off].

E-Mail Address - Specifies the e-mail address for the Mail Notify feature.

Image Rotation (180deg) - Set the checkbox to [On] to rotate the prints by 180°. Default is [Off].

How to Use Help

The following describes how to use Help.

1. Click  and a ? mark appears next to the pointer. You can then click items for which you need explanations, opening a pop-up window that contains relevant information. Click inside the pop-up window to close it.
2. Click [Help], an explanation of the current tab appears as Help information.

4 Operation with Windows 2000, Windows XP and Windows Server 2003

The following information can be found in this chapter:

- About the Software
 - Bundled Software
 - Hardware/Software Requirements
- Installing the Printer Driver
 - Installation Procedure
- Device Options and Print Settings
 - Device Settings Tab Settings
 - Configuration Tab Settings
 - Advanced Options Dialog Box Settings
 - Output Settings Tab Settings
- How to Use Help

About the Software

This section describes the software for Windows 2000, Windows XP and Windows Server 2003 included with the PostScript Driver Library CD-ROM.

Bundled Software

The following items are included on the CD-ROM and are necessary when using the printer on Windows 2000, Windows XP and Windows Server 2003.

Microsoft PScript 5 Driver and PPD files - Microsoft PScript 5 Driver and PPD files (for Windows 2000, Windows XP and Windows Server 2003).

Adobe Acrobat Reader - Allows you to view and print PDF files on all major computing platforms.

Hardware/Software Requirements

The minimum system requirements for the Windows 2000, Windows XP and Windows Server 2003 printer driver are described below.

Computer System

Personal computer on which the Windows 2000, Windows XP or Windows Server 2003 operating system can operate.

Basic Software

- Windows 2000 Professional
- Windows 2000 Server
- Windows 2000 Advanced Server
- Windows XP Professional Edition
- Windows XP Home Edition
- Windows Server 2003

Installing the Printer Driver

Install MS PScript 5 printer driver onto Windows 2000, Windows XP and Windows Server 2003 by following the procedure below.

This section describes how to install the printer driver for Windows 2000, as an example.

NOTE: It is possible to cancel installation of the printer driver by clicking [Cancel] in the dialog box displayed during installation. You can also click [Back] to delete the settings in that dialog box and return to the previous dialog box.

NOTE: If you want to set up Port 9100, refer to the System Administration Guide on the Customer Documentation CD-ROM.

Installation Procedure

1. Start Windows 2000.

NOTE: Log on as a Power User group member or an Administrator. Refer to the Windows 2000 documentation for details about the Power User group.

2. On the Start menu, point to Settings and click [Printers].
3. In the Printers window, double-click [Add Printer].
4. Click [Next].
5. Select how the printer is connected to the computer and click [Next].
Select [Local printer] if the printer is connected directly to the computer or to the

network in the TCP/IP(LPD) environment. Otherwise, select [Network printer]. The following is an example of a Local printer.

NOTE: When you select [Local printer], deselect the “Automatically detect and install my Plug and Play printer” check box.

NOTE: Specify the target printer in the Connect to printer dialog box if you selected [Network printer].

6. Select the port you are using and click [Next].

When the printer is connected in the TCP/IP(LPD) environment:

- 1) Click [Create a new port].
- 2) Select Standard TCP/IP Port in the Type list and click [Next].
- 3) Click [Next].
- 4) Enter the IP address of the printer in [Printer Name or IP Address], then click [Next].

Click [Finish] in the dialog box that will be displayed.

7. Insert the PostScript Driver Library CD-ROM in the CD-ROM drive.

8. Click [Have Disk].

9. Enter “Drive Name:\English\PrinterDriver\win2000” in the “Copy manufacturer’s files from:” box and click [OK].

In this guide, we have used “E:” as the CD-ROM drive. If you are using a different drive for the CD-ROM, specify accordingly.

NOTE: Click [Browse] to specify a folder on the CD-ROM.

10. Select your printer model from the Printers list and click [Next].

11. Enter the printer name, set whether you want to use it as the default printer, and click [Next].

12. Select [Do not share this printer] and click [Next].

We recommend that you install the driver on each computer with the procedure appropriate to the Operating System.

13. Specify whether or not to print a test page, then click [Next].

14. After confirming the settings displayed, click [Finish].

NOTE: If the dialog box “Digital Signature Not Found” appears, click [Yes] to continue the installation.

Installation begins.

15. Confirm that the printer has been added in the Printers window.

This completes the installation of the printer driver. Remove the CD-ROM from the drive.

See *Device Options and Print Settings* on page 26 to configure the printer.

Store your CD-ROM in a safe place.

Device Options and Print Settings

This section describes printer specific settings for printer driver properties. For other items, refer to the Help.

- Installable Options in the Device Settings Tab
- Configuration Tab
- Printer Specific Sections in Printer Features of the Advanced Options Dialog Box
- Output Settings Tab

NOTE: You can also refer to Help for explanations of these settings. See *How to Use Help* on page 31.

To view the Device Settings or Configuration tabs, select the printer in the Printers window, then click [Properties] on the File menu.

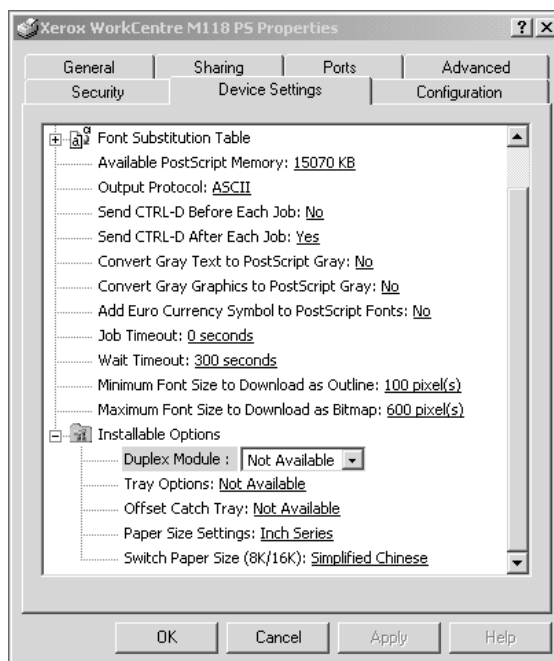
To view the Advanced Options dialog box, select the printer in the Printers window, then click [Printing Preferences] on the File menu. Click [Advanced] in the Layout screen.

To view the Output Settings tab, select the printer in the Printers window, then click [Printing Preferences] on the File menu.

Device Settings Tab Settings

This section describes Installable Options in the Device Settings tab. To print correctly, it is necessary to make the appropriate settings in this tab.

Select the items in Installable Options and change the settings in the drop-down list that appears on the right.



Settings

Duplex Module - Specifies whether a duplex unit is installed. Select Installed when the duplex unit is installed. When you select Installed, it is possible to select the Duplex feature in the Paper tab.

Tray Options - Specifies the paper tray type installed on the machine. When [2-Tray Configuration] is selected, Tray 1 and Tray 2 can be used. When [4-Tray Configuration] is selected, Tray 1 to Tray 4 can be used.

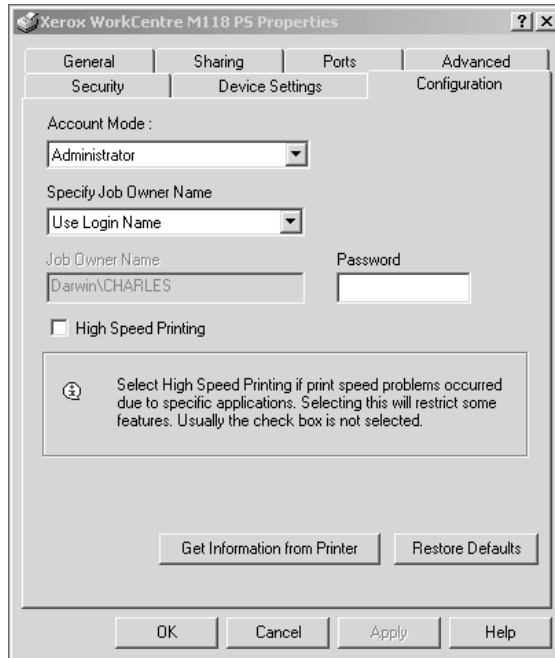
Offset Catch Tray - Specifies whether an offset catch tray is installed. Select Installed when an offset catch tray is installed. When you select Installed, it is possible to set Job Offset in the Configuration tab.

Paper Size Settings - Specifies the paper size group for different areas to enable the selection of paper size common to that location.

Switch Paper Size (8K/16K) - Indicate your language preference to enable the set of 8K and 16K paper size that is best suited to your needs.

Configuration Tab Settings

This section describes the settings of the Configuration tab.



NOTE: You can restore defaults by clicking [Restore Defaults].

Settings

Account Mode - Specifies if all users or only Administrators can change authentication related settings.

Specify Job Owner Name - Select how to specify User ID.

Job Owner Name - Enter a User ID.

Password - Enter a Password that matches the User ID.

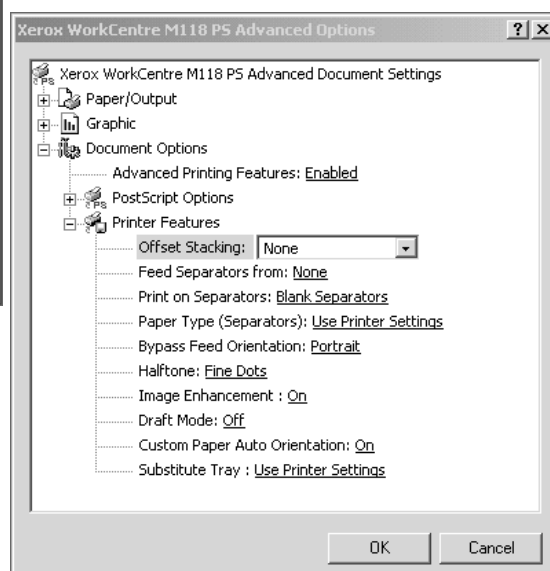
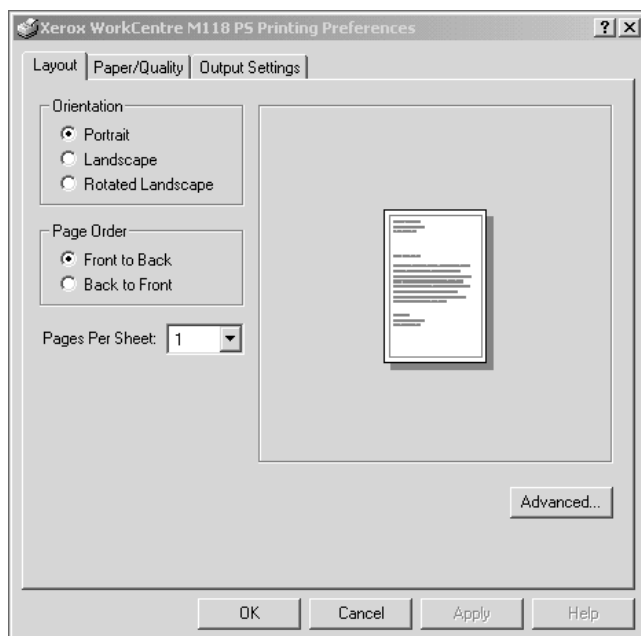
High Speed Printing - Set this feature to make improvements in print speed, when using an application that generates PostScript directly.

Get Information from Printer - Clicking [Get Information from Printer] when the machine is used as a network printer verifies the printer option installation state using the printer port to which the printer is connected, and reflects this in the Hardware Options setting.

Advanced Options Dialog Box Settings

This section describes the settings of the Advanced Options dialog box displayed when clicking Advanced in the Layout tab.

Select the items from Printer Features and change the settings in the drop-down list that appears on the right



Settings

Offset Stacking - The position of individual jobs or sets of copies are shifted to either side of the output tray to enable easy separation.

Feed Separators from - Specifies the paper tray that transparency dividers are to be fed from. When [Auto] is selected, the tray set on the machine is used as the feed destination.

Print on Separators - Specifies whether or not to print on the transparency dividers as well as the transparency.

Paper Type (Separators) - Specifies a paper type for the transparency divider.

Bypass Feed Orientation - Specifies the paper orientation when printing from the bypass tray. When feeding the short edge of the paper first, select [Landscape]. When feeding the long edge of the paper, select [Portrait].

Halftone - Select the halftone settings for printing.

Select [Fine Dots] for the small size halftone dot commonly used in PostScript.

Select [Thick Dots] for coarser dots than the Fine Dots setting.

Select [Type 3] for the same halftone setting that is used in PCL.

Image Enhancement - Specifies whether or not to use the Image Enhancement function. Selecting [On] smooths out boundaries when printing. This reduces jagged edges by artificially increasing the resolution of the image. When printing a bitmapped image composed of coarse halftone dots, smooth color gradation is impossible in certain situations. In this case, select [Off].

Draft Mode - Specifies whether or not to reduce the amount of toner used when printing drafts. When [On] is selected, the overall printed color becomes lighter. This is best for printing documents when print quality is not necessary.

Custom Paper Auto Orientation - Specifies whether or not to correct the orientation of the custom paper.

Substitute Tray - Specifies what action to take when the paper for the print size is not loaded in the machine.

Use Printer Settings - Use the printer settings. The settings can be confirmed on the control panel.

Display Message - Display paper supply messages on the control panel. Printing is impossible until paper is supplied.

Use Nearest Size (Adjust to Fit) - Selects the nearest paper size and automatically adjusts the image size as necessary.

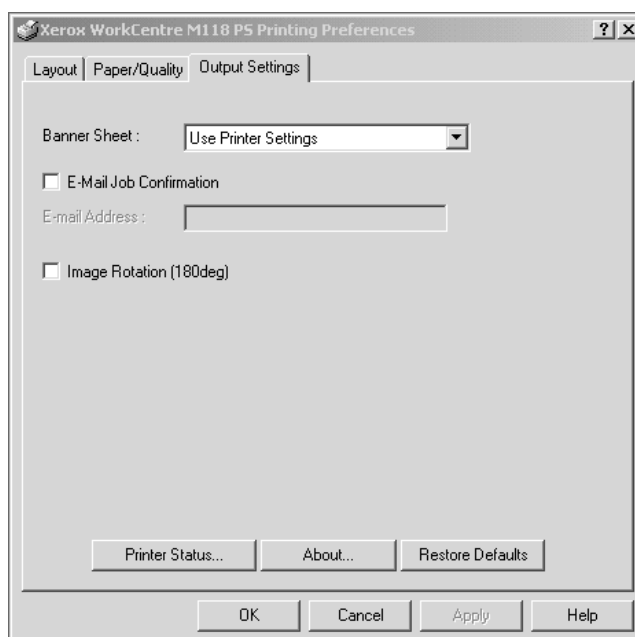
Use Nearest Size (No Zoom) - Selects the nearest paper size and prints the same size as the image.

Use Larger Size (Adjust to Fit) - Selects paper larger than the original and automatically adjusts the image size as necessary.

Use Larger Size (No Zoom) - Selects paper larger than the original and prints the same size as the image.

Output Settings Tab Settings

This section describes the Output Settings tab.



NOTE: You can restore defaults by clicking [Restore Defaults].

Settings

Banner Sheet - Specifies whether or not to add a banner sheet to printed output. When [Use Printer Settings] is selected, the printer settings are used. When [Printer Start Page] is selected, outputs the banner sheet using the first sheet.


E-Mail Job Confirmation - Specifies whether or not to use the Mail Notify feature to notify the end of the print job via e-mail. Default is [Off].

E-Mail Address - Specifies the e-mail address for the Mail Notify feature.

Image Rotation (180deg) - Set the checkbox to [On] to rotate the prints by 180°. Default is [Off].

How to Use Help

The following describes how to use Help.

1. Click  and a ? mark appears next to the pointer. You can then click items for which you need explanations, opening a pop-up window that contains relevant information. Click inside the pop-up window to close it.
2. Click [Help], an explanation of the current tab appears as Help information.

5 Operation on Macintosh Computers

The following information can be found in this chapter.

- About the Software
 - Bundled Software
 - Hardware/Software Requirements
- Installing the AdobePS Printer Driver
 - Installation Procedure (Mac OS 9.x or earlier)
 - Setting the Printer Driver (Mac OS 9.x or earlier)
 - Installation Procedure (Mac OS X)
 - Adding a Printer (Mac OS X)
- Options
 - Printer Specific Options Settings
 - Printer Driver Settings
- Installing the Screen Fonts

About the Software

This section describes the Macintosh software that is included on the PostScript Driver Library CD-ROM.

NOTE: When using AppleTalk protocol to print from Macintosh, set the EtherTalk port to Enable on the control panel.

Bundled Software

Insert the CD-ROM and double-click the WorkCent-PS icon to display the Window. The following items are contained in the folder:

AdobePS™ Printer Driver (ver. 8.7.0, and 8.8) and PPD files - Adobe PostScript driver and PPD files (for Macintosh).

PPD Installer - The PPD file installer for Mac OS X, 10.2.

Adobe Screen Fonts - Contains 117 PostScript fonts and 19 TrueType fonts, which are standard for PostScript 3 printers. In addition, 37 PostScript fonts for the Central European (CE) character set are included.

ATM (Adobe Type Manager) (ver. 4.5.2) - Helps you to install typefaces and activate and manage your fonts.

Adobe Acrobat Reader - Allows you to view and print PDF files on all major computing platforms.

Hardware/Software Requirements

The minimum system requirements for the Macintosh printer driver and the utility are described below.

Computer System

- Macintosh
- Power Macintosh

Basic Software

- **For AdobePS 8.7** - Mac OS 8.5 and 8.5.1
- **For AdobePS 8.8** - Mac OS 8.6 through 9.2.2
- **For PPD Installer** - Mac OS X 10.2

NOTE: When using Mac OS X, launch the Classic environment to run the applications.

Installing the AdobePS Printer Driver

This section describes how to install the Adobe printer driver and how to set the printer driver for this machine. There are two steps to install the printer driver. Firstly, use the installer enclosed on the CD-ROM to install the printer to the Macintosh. Then, configure the printer driver according to the printer used.

Installation Procedure (Mac OS 9.x or earlier)

This section describes the procedures for installing the AdobePS printer driver.

As an example, here is the procedure to install AdobePS 8.8.

1. Insert the PostScript Driver Library CD-ROM in the CD-ROM drive.
The WorkCent-PS icon appears on the desktop.
2. Double-click [WorkCent-PS].
3. Double-click the [PrinterDriver] folder depending on your printer model, and then the "AdobePS880" folder.
4. Double-click [AdobePS Installer 8.8].
5. When the Installer opens, click [Continue].
6. Read through the license agreement carefully and if you have no objections to it, click [Accept].

Read the Read Me displayed, then click [Continue].

7. Confirm the Install Location and change it if necessary, then click [Install].

Installation begins.

8. When the dialog box showing installation has completed appears, click [Restart] or [Quit].

This completes the installation.

Proceed to *Setting the Printer Driver (Mac OS 9.x or earlier)* on page 35 to continue.

Setting the Printer Driver (Mac OS 9.x or earlier)

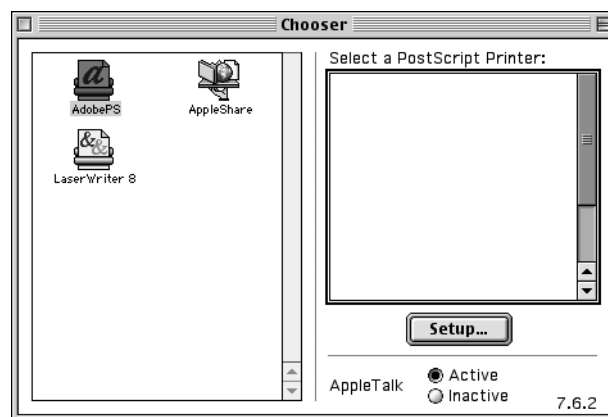
When you finish installing the AdobePS printer driver, set the PostScript Printer Description (PPD) file for this machine to the printer driver.

The printer driver controls the functions of this machine based on the information in the PPD file.

1. Make sure that the machine is on.
2. Check that the machine's EtherTalk port is set to Enable.

You can check the EtherTalk settings in the System Settings List. See the User Guide on the Customer Documentation CD-ROM for details about how to print the System Settings List.

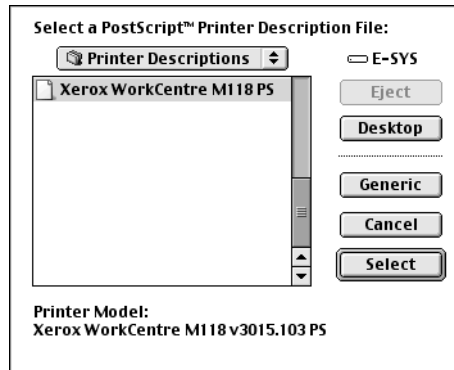
3. On the Apple menu select [Chooser], then click [AdobePS].
4. Select your printer from the Select a PostScript Printer list box, which appears to the right of the Chooser, then click [Setup].



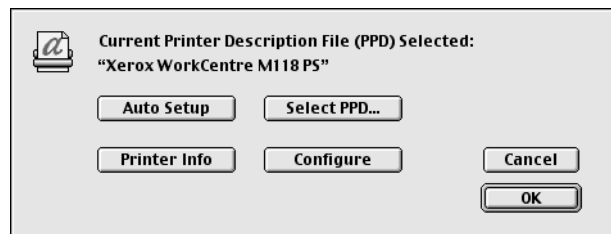
This automatically searches for the printer and sets the PPD file.

If the search for the PPD file is not automatically performed:

- (1) Click [Select PPD].
- (2) Select your printer model in the list, then click [Select].



The PPD file for this machine is set.

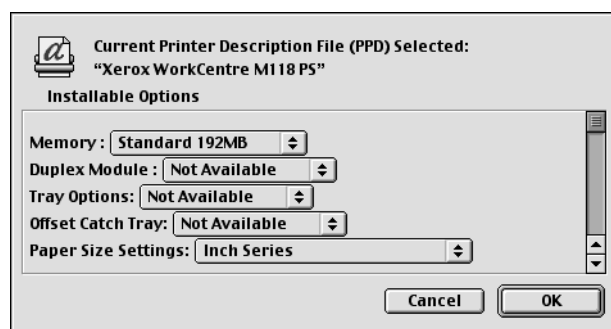


5. Click [Configure] to set the options.

See *Options on page 39* for details about the options.

NOTE: You can change the print settings after you install the printer driver.

NOTE: To use the options, it is necessary to set Configure. Always set this according to the configuration of your machine. Also, Installable Options will usually be set automatically according to the bi-directional communications of this machine. You do not have to change the settings.



6. Click [OK]. Click [OK] once more in the screen displayed.
7. Close the Chooser.

Installation Procedure (Mac OS X)

Install the PostScript Printer Description (PPD) file for the Mac OS X into the Mac OS X v10.2.x Macintosh.

This section describes how to install the PPD file on a Mac OS X v10.2.4, as an example.

NOTE: The printer driver does not need to be installed on the Mac OS X. It uses the Adobe PostScript driver that is provided with the Operating System.

Installation Procedure

1. Insert the PostScript Driver Library CD-ROM in the CD-ROM drive.
The WorkCent-PS icon appears on the desktop.
2. Double-click [WorkCent-PS].
The WorkCent-PS window opens.
3. Open the [Mac OS X] folder.
The Mac OS X window opens.
4. Double-click [PPD Installer].
The installer starts and the Authenticate window opens.
5. Enter the Administrator's user name and password, then click [OK].
The License screen opens.
6. Read through the license agreement carefully and if you have no objections to it, click [Accept].
7. Confirm the Install Location and change it if necessary, then click [Install].
8. When the dialog box showing installation has completed appears, click [Quit].
This completes the installation.
Proceed to *Adding a Printer (Mac OS X)* on page 37 to continue.

Adding a Printer (Mac OS X)

After the PPD file has been installed, set the PPD file for the printer driver, and then add the printer.

The printer driver controls the printer functions based on the information in the PPD file. As an example, this section describes how to add a printer on a Mac OS X v10.2.4.

Procedure

1. Make sure that the machine is on.
2. Check that the machine's port is set to Enable.
 - When using AppleTalk, set the EtherTalk port to Enable.
 - When using IP Printing, set the LPD port to Enable.

You can check the EtherTalk and LPD settings in the System Settings List. See the User Guide on the Customer Documentation CD-ROM for details about how to print the System Settings List.

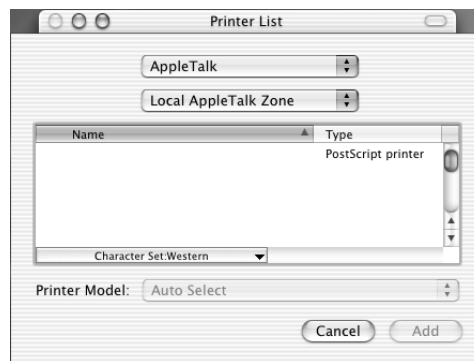
3. Start [Print Center].

NOTE: You can find Print Center in the Utilities folder in the Applications folder.

4. When the Printer List screen opens, click [Add].
5. Select the protocol used to connect the printer.

When using AppleTalk

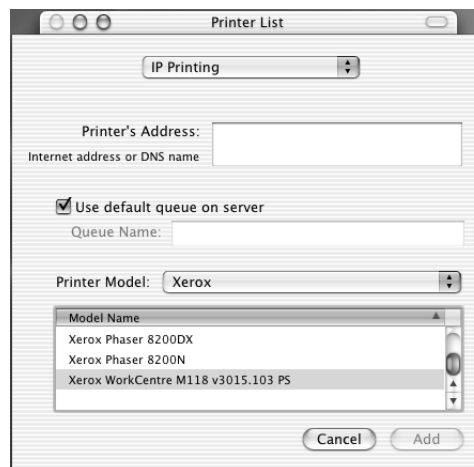
1. Select [AppleTalk] from the menu, and specify the zone for the printer.



2. Select the printer you are using from the list.
3. Select [Auto Select] from Printer Model.
4. Click [Add].

When using IP Printing

1. Select [IP Printing] from the menu, and enter the IP address for the printer being used in Printer's Address.



2. Select [Xerox] from Printer Model, and select the printer to be used.
3. Click [Add].

This completes the addition of a printer.

Printer options

1. Click [Printers] on the Print Center menu bar, and select [Show Info].
2. Select [Installable Options], and select the options that have been installed on the printer.

NOTE: See *Options* on page 39 for details about the options.

Options

This section describes the Configure in the Chooser and the Printer Specific Options of the printer driver.

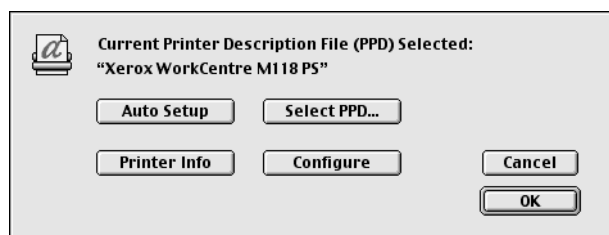
Printer Specific Options Settings

For Mac OS 9.x and earlier

This section describes Installable Options for operating systems earlier than Mac OS 9.x.

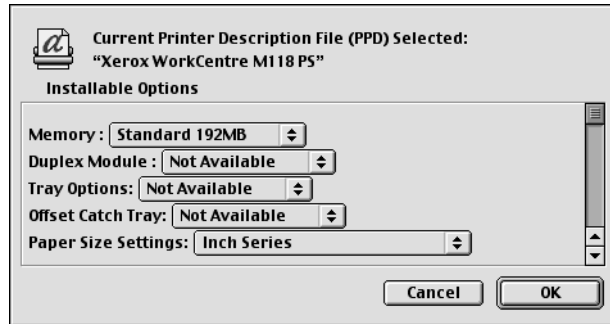
NOTE: Usually, Installable Options are automatically set according to the bidirectional communications of this machine. You do not have to change the settings.

1. Select the printer using the Chooser and click [Setup].
The Current Printer Description File (PPD) Selected dialog box appears.
2. Click [Configure].



The Installable Options list appears.

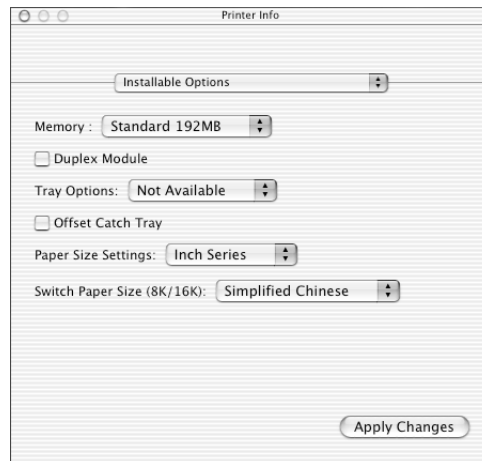
3. Set the option menu items in Installable Options, and click [OK].



For Mac OS X

This section describes Installable Options for Mac OS X.

1. Click [Printers] on the Print Center menu bar, and select [Show Info].
2. Select [Installable Options], and select the options that have been installed on the printer.



Settings

Memory - Displays the amount of printer memory.

Duplex Module - Specifies whether a duplex unit is installed. Select Installed when the duplex unit is installed. When you select Installed, it is possible to select the Duplex feature in the Paper tab.

Tray Options - Sets the tray installed on the machine.

When [2-Tray Configuration] is selected, Tray 1 and Tray 2 can be used.

When [4-Tray Configuration] is selected, Tray 1 to Tray 4 can be used.

NOTE: This item is displayed in Mac OS X only.

Offset Catch Tray - Specifies whether an offset catch tray is installed. Select Installed when an offset catch tray is installed. When you select Installed, it is possible to set Job Offset in the Configuration tab.

Paper Size Settings - Specifies the paper size group for different areas to enable the selection of paper size common to that location.

Switch Paper Size (8K/16K) - Indicate your language preference to enable the set of 8K and 16K paper size that is best suited to your needs.

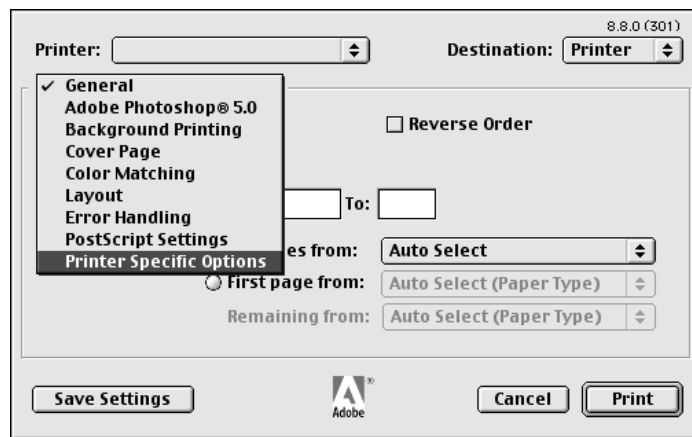
Printer Driver Settings

This section describes Printer Specific Options, used to set the printer driver.

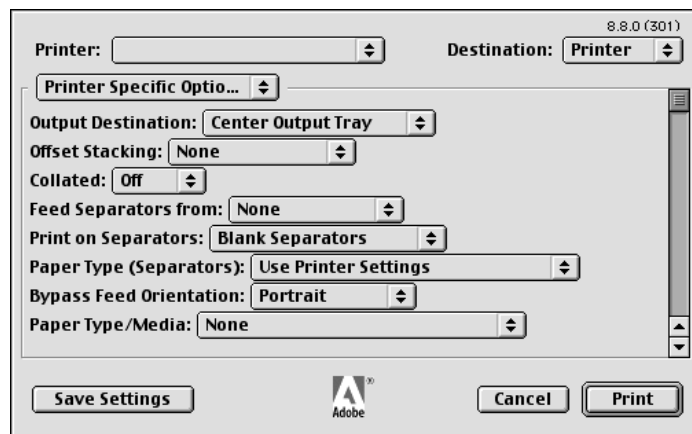
1. On the File menu of the application, click [Print].

The Print dialog box appears.

2. Select [Printer Specific Options].



3. Specify the functions that you want to set.



Settings

This section describes the settings in the Printer Specific Options list.

The settings that can be selected vary depending on which options have been installed. Make these settings after specifying the installed options in Configure. See *Printer Specific Options Settings* on page 39.

Output Destination - Specifies the output destination.

NOTE: The items that can be selected vary according to whether the optional side tray kit or finisher has been installed.

Offset Stacking - The position of individual jobs or sets of copies are shifted to either side of the output tray to enable easy separation.

Collated - Selects whether to collate a multiple-page file per set when they are printed. This function is enabled when the printer HDD kit is installed.

Feed Separators from - Specifies the paper tray that transparency dividers are to be fed from. When [Auto] is selected, the tray set on the machine is used as the feed destination.

Print on Separators - Specifies whether or not to print on the transparency dividers as well as the transparency.

Paper Type (Separators) - Specifies a paper type for the transparency divider.

Bypass Feed Orientation - Specifies the paper orientation when printing from the bypass tray. When feeding the short edge of the paper first, select [Landscape]. When feeding the long edge of the paper, select [Portrait].

Paper Type/Media - Specifies a paper type for the transparency divider.

Halftone - Select the halftone settings for printing.

Select [Fine Dots] for the small size halftone dot commonly used in PostScript.

Select [Thick Dots] for coarser dots than the Fine Dots setting.

Select [Type 3] for the same halftone setting that is used in PCL.

Image Enhancement - Specifies whether or not to use the Image Enhancement function. Selecting [On] smooths out boundaries when printing. This reduces jagged edges by artificially increasing the resolution of the image. When printing a bitmapped image composed of coarse halftone dots, smooth color gradation is impossible in certain situations. In this case, select [Off].

Draft Mode - Specifies whether or not to reduce the amount of toner used when printing drafts. When [On] is selected, the overall printed color becomes lighter. This is best for printing documents when high print quality is not necessary.

Custom Paper Auto Orientation - Specifies whether or not to correct the orientation of the custom paper.

Substitute Tray - Specifies what action to take when the paper for the print size is not loaded in the machine.

Use Printer Settings - Use the printer settings. The settings can be confirmed on the control panel.

Display Message - Display paper supply messages on the control panel. Printing is impossible until paper is supplied.

Use Nearest Size (Adjust to Fit) - Selects the nearest paper size and automatically adjusts the image size as necessary.

Use Nearest Size (No Zoom) - Selects the nearest paper size and prints the same size as the image.

Use Larger Size (Adjust to Fit) - Selects paper larger than the original and automatically adjusts the image size as necessary.

Use Larger Size (No Zoom) - Selects paper larger than the original and prints the same size as the image.

Installing the Screen Fonts

This section explains how to install the fonts in the Screen Font folder.

It is recommended that all other applications are closed before installing the fonts. Otherwise, a warning message appears between steps 5 and 6.

1. Start the Macintosh and insert the PostScript Driver Library CD-ROM into the CD-ROM drive.
2. Double-click the [WorkCent-PS] icon followed by the Screen Font folder and then the [PS3 Fonts Installer].
3. When the Installer window appears, click [Continue].

The license agreement dialog appears.

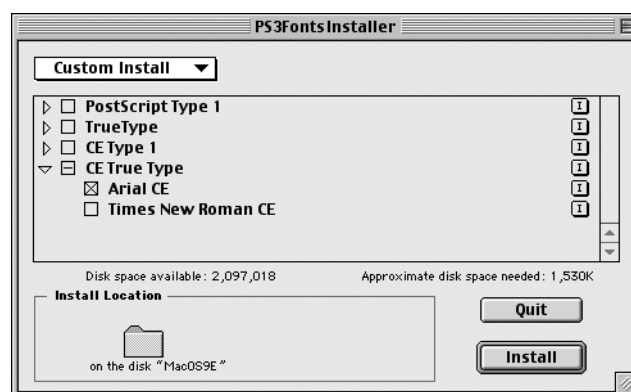
4. Read through the agreement carefully and if you have no objections to it, click [Accept].

The PS3FontsInstaller dialog box appears.

5. You may select [Easy Install] or [Custom Install].

Easy Install - installs all the fonts provided in the Screen Font folder.

Custom Install - installs the selected fonts only. Simply click on the triangle arrow beside the four categories of fonts to display the fonts in each category and then check the fonts to be installed. For example, the diagram below shows that Arial CE of the CE TrueType fonts is selected.



A warning message will appear if you did not quit all other applications before performing the font installation.

6. Click [Install].

The installation of the fonts begins.

After the installation, you have to restart your Macintosh before the fonts can be used.
Store your CD-ROM in a safe place.

6 Appendix

Cautions and Limitations

Troubleshooting

See the User Guide on the Customer Documentation CD-ROM for error codes and error messages displayed on the control panel. See the User Guide on the Customer Documentation CD-ROM for how to deal with paper jams.

Print operation

The printer driver allows you to make selections to print on custom paper and postcard using duplex and/or the stapling feature to the Finisher Tray. However, these features cannot be used when printing on custom paper or postcards.

You can feed custom paper from the bypass tray only. However, when you select custom paper, the Paper Source selection does not change to Manual Feed automatically. Please select Manual Feed yourself.

7 Index

A

Adobe Acrobat Reader 34
Adobe Type Manager 7, 15, 33
AdobePS Printer Driver (ver. 4.5.3) 7
AdobePS Printer Driver (ver. 5.2.2) 15
AdobePS Printer Driver (ver. 8.7.0, and 8.8)
33
Advanced Options Dialog Box 29
Advanced Tab 20

C

Configuration Tab 10, 19, 28

D

Device Settings Tab 18, 27

E

error codes 45
error messages 45

M

Macintosh 33

O

Options Tab 9
Output Settings Tab 9, 22

P

PostScript Driver Library 5
PostScript Logo Seal 5
PostScript Printer Description (PPD) 35
PostScript Program ROM 5
PPD 7, 15, 23, 33
Printer Specific Options Settings 39

S

Screen Fonts 43

W

Windows 2000 23
Windows 95 7
Windows 98 7
Windows Me 7
Windows NT 4.0 15
Windows Server 2003 23
Windows XP 23