

Release date: 18 March 2004

P/N: 727-00021A-EN

Technical Bulletin

Creo Technical Bulletin # 4

Working with the Spire CXP3535 Color Server in the Microsoft Active Directory Domain Environment

Checked in the Spire CXP3535 v1.0 Color Server for the DocuColor 3535 Printer/Copier

Process Description

The Spire™ CXP3535 color server is dispatched with a “Stand Alone Server” configuration that permits any user from any environment to use the printing resources of the Spire CXP3535 color server. The field requirement is that the server will run as a **Member Server** in the Microsoft Active Directory® environment.

The benefits of this installation are as follows:

- Use of Active Directory’s highly developed security environment, providing a domain user and resource management as a way to filter user access to the Spire CXP3535 color server.
- Use of the built-in domain mechanisms (such as SMS server) to maintain scheduled updates of security patches and system fixes to the Spire CXP3535 color server.
- Use of the Active Directory auditing mechanism to track resource usage in the Spire CXP3535 color server.

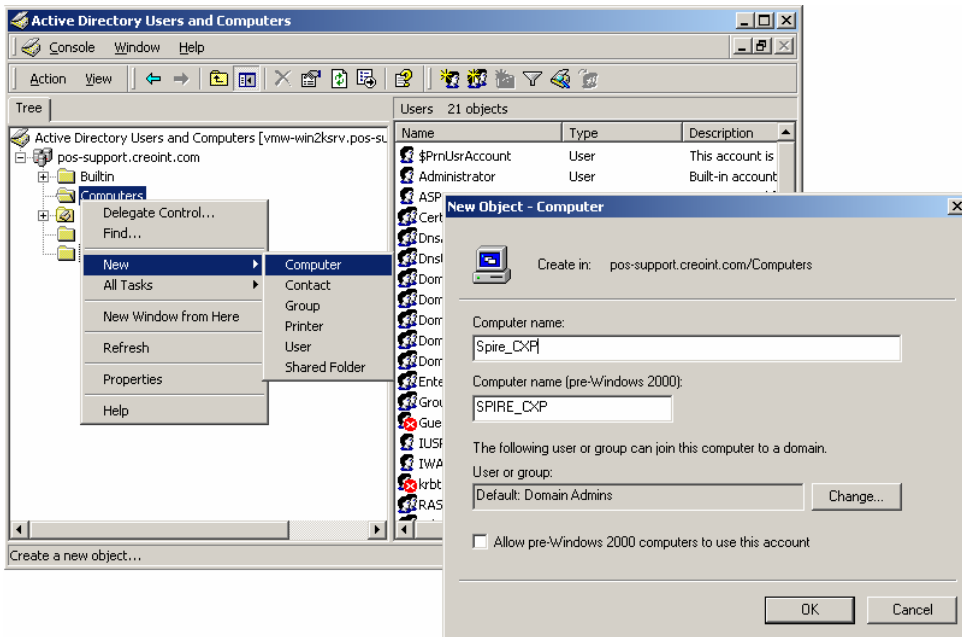
The following procedure describes the procedure for adding the Spire CXP3535 color server to the Active Directory domain, and contains the following major tasks:

Note: This procedure should be performed by a Network Administrator with administrator security rights on the relevant Active Directory domain.

1. Create the computer and user accounts in the Active Directory domain.
2. On the Spire CXP3535 color server, uninstall the Spire CXP3535 color server application.
3. Add the Spire CXP3535 color server to the domain and then reinstall the Spire CXP3535 color server application.

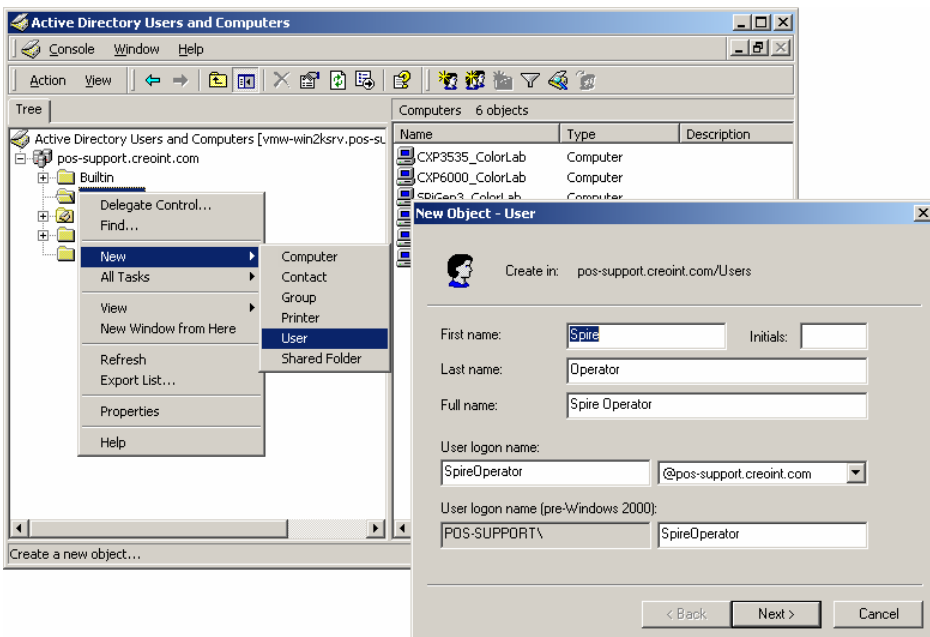
Stage 1: Active Directory Configuration

1. In the Active Directory Users and Computers, create a computer account that matches the required Spire CXP3535 color server host name (For example **Spire_CXP**).



2. Create a User Account (which will be used later for login).

Note: The user name and computer name shown in the following screen capture are an example, and can be replaced according to site needs.

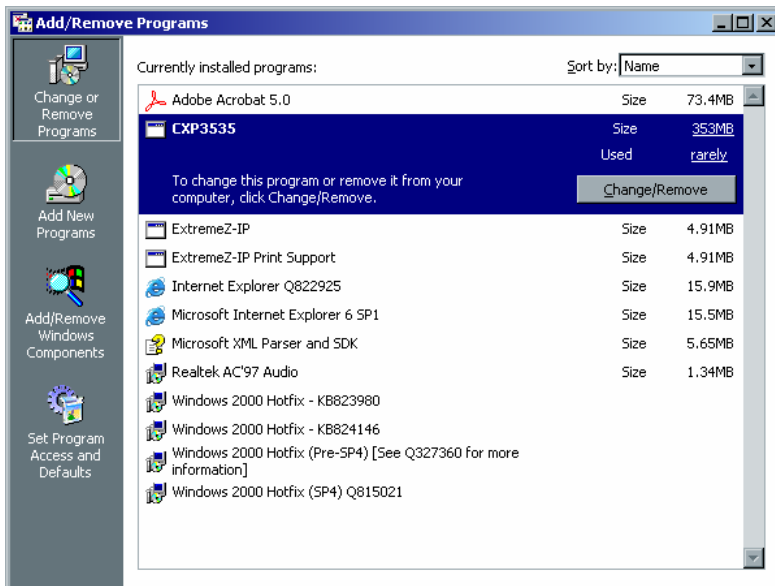


Stage 2: Spire CXP3535 Color Server Configuration

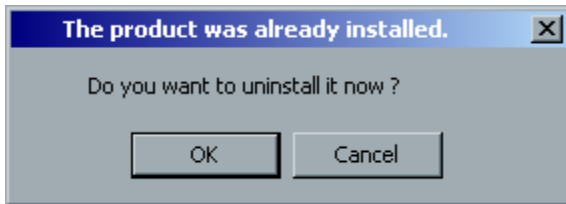
Step 1: Uninstalling the Spire CXP3535 color server application

Note: This procedure assumes the current Spire CXP3535 color server is currently installed according to the default factory settings.

1. Shut down the Xerox DocuColor 3535 printer.
2. Close the Spire CXP3535 color server application.
3. On the Spire CXP3535 color server, access **Start>Settings>Control Panel>Add/Remove Programs** and uninstall the Spire CXP3535 color server application.

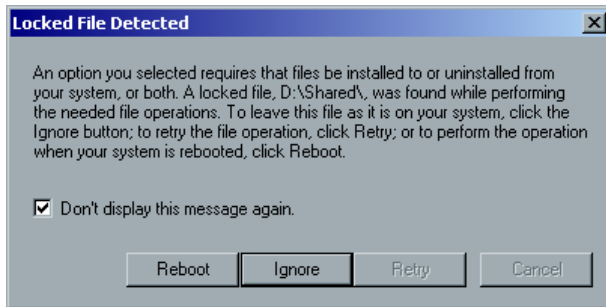


The following message appears:



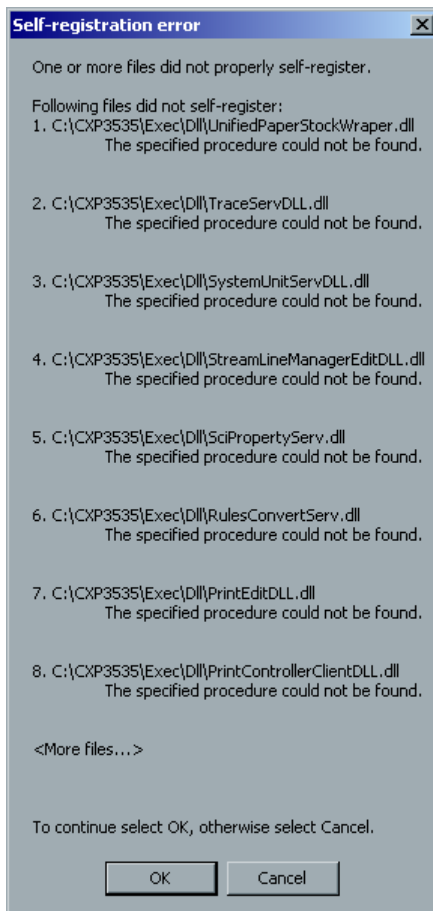
4. Click **OK**.

The Locked File Detected message appears.

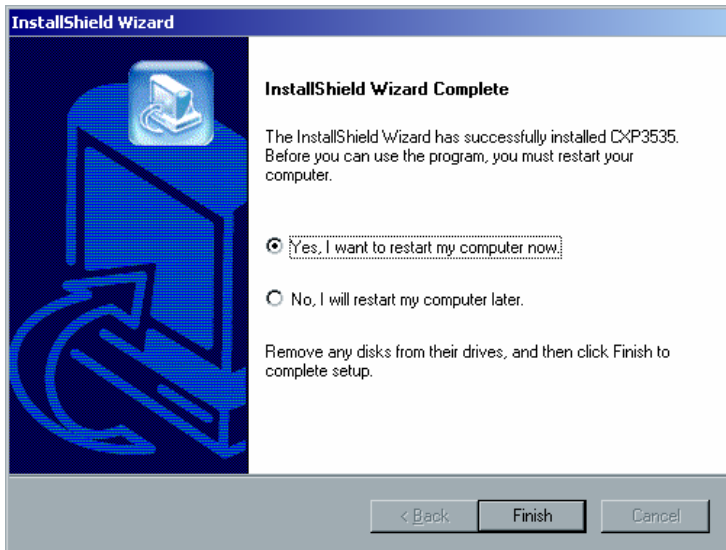


5. Select **Don't display this message again**, and click **Ignore**.

The Self-Registration Error window appears.



6. Click **OK**.

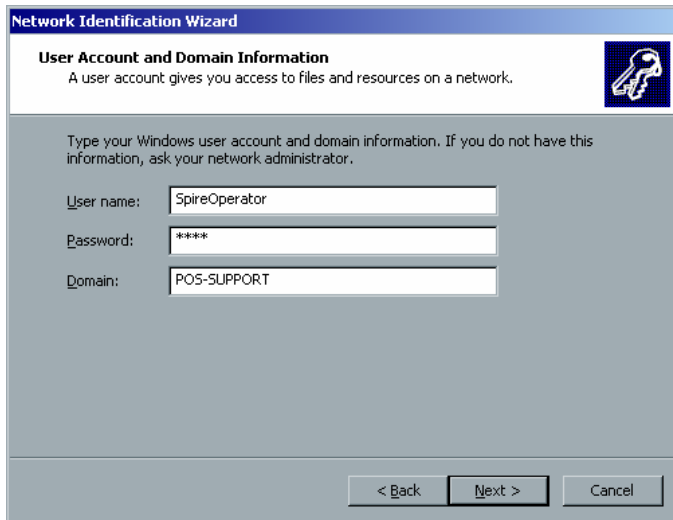


1. Click Finish.

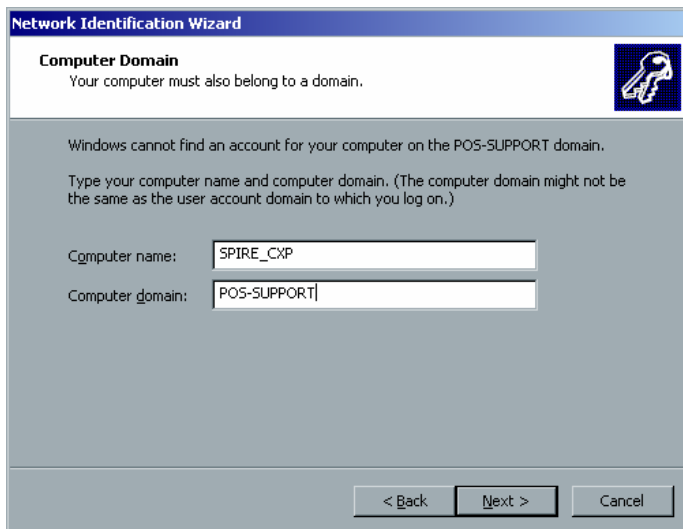
The computer restarts.

Step 2: Adding the Spire CXP3535 Color Server to the Active Directory Domain

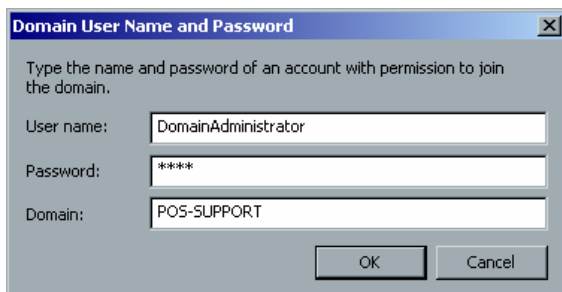
2. Access **Start>Settings>Control Panel** and double click the **System** icon.
3. Select the **Network Identification** tab and click **Network ID**.
4. Click **Next** in the **Network Identification Wizard** window (ensure **This computer is part of business network, and I use it to connect to other computers at work** is selected).
5. Click **Next** in the next window (ensure **My company uses a network with a domain** is selected).
6. Click **Next** on the next window.
7. In the User Account and Domain Information screen enter the user name, password and domain name of the user account created on stage 1 and click **Next**



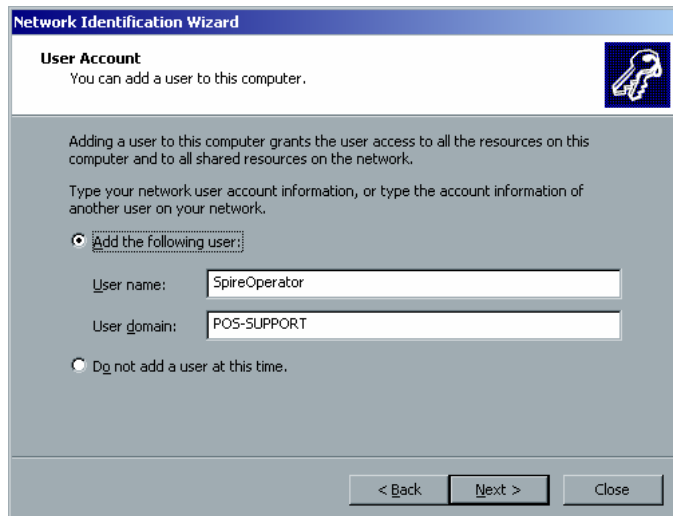
8. In the Computer Domain screen, enter the Spire CXP3535 color server **Computer name** (the computer name created in the Active Directory in Stage 1), and the **Domain name**, and click **Next**.



9. In the Domain User Name and Password window, enter the **User name** and **Password** of an account which has an Administrative rights to add the computer to the Active Directory domain.

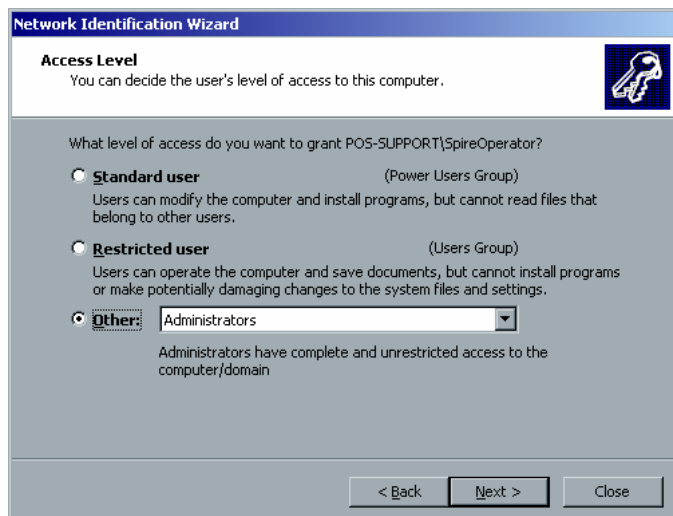


10. In the User Account screen, select **Add the following user** and enter the Spire CXP3535 color server **User name** (which was created in the Active Directory in Stage 1) and the **User domain** name and click **Next**



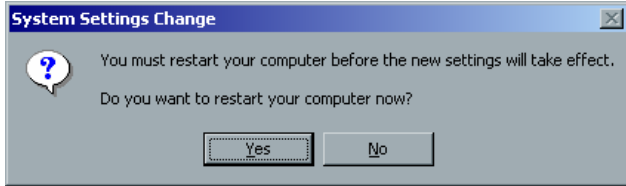
11. In the Access Level screen, select **Other** and select **Administrators** in the drop-down list.

Note: This action grants the new user domain account administrative rights on the Spire CXP3535 color server.



12. Click **Next** and then **Finish** in the next window.
13. On the next **Network Identification** pop up window, press **OK**.
14. Press **OK** to close the **System Properties** window.

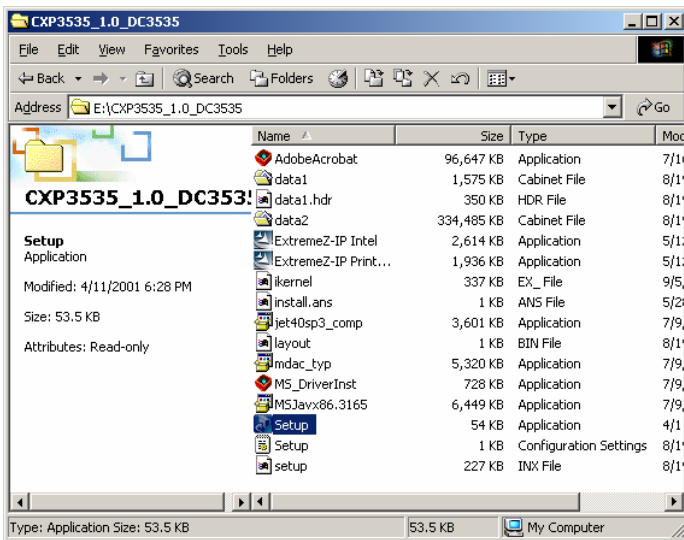
15. Press **Yes** on the next pop up window, allowing the system to reboot.



16. After the system restarts, login using the Active directory domain user account and password and enter the domain name.

Step 3: Reinstalling the CXP software

1. Enter the Spire CXP3535 color server software CD (CD#2) shipped with the Spire CXP3535 color server, and double-click the **Setup** icon.



2. Install the application according to the installation procedure described in the Spire CXP3535 color server User Guide.
3. When the installation is complete, reboot the Spire CXP3535 color server, and login using the Active Directory user name and password.
4. Wait until the CXP3535 Color Server application workspace appears.
5. Power up the Xerox DocuColor 3535 printer.