



# Release Notes

English

## **Spire CXP5000 Color Server for Xerox DocuColor 5252 and 2045 Digital Color Press**

**Version 4.0**

This page intentionally left blank

---

## Copyright

Copyright © 2004 Creo Inc. All rights reserved.

No copying, distribution, publication, modification, or incorporation of this document, in whole or part, is permitted without the express written permission of Creo. In the event of any permitted copying, distribution, publication, modification, or incorporation of this document, no changes in or deletion of author attribution, trademark legend, or copyright notice shall be made.

The text and drawings herein are for illustration and reference only. The specifications on which they are based are subject to change. Creo Inc. may, at any time and without notice, make changes to this document. Creo Inc., for itself and on behalf of its subsidiaries, assumes no liability for technical or editorial errors or omissions made herein, and shall not be liable for incidental, consequential, indirect, or special damages, including, without limitation, loss of use, loss or alteration of data, delays, or lost profits or savings arising from the use of this document.

No part of this document may be reproduced, stored in a retrieval system, published, used for commercial exploitation, or transmitted, in any form by any means, electronic, mechanical, photocopying, recording, or otherwise, without the express written permission of Creo Inc.

This document is also distributed in Adobe Systems Incorporated's PDF (Portable Document Format). You may reproduce the document from the PDF file for internal use. Copies produced from the PDF file must be reproduced in whole.

## Trademarks

The Creo wordmark, Creo logo, and the names of the Creo products and services referred to in this document are trademarks of Creo Inc.

Adobe, Acrobat, the Acrobat logo and PDF are registered trademarks of Adobe Systems Inc., and are registered in the US Patents and Trademark Office and may be registered in other jurisdictions.

Apple, AppleTalk, AppleShare, EtherTalk, LocalTalk, Macintosh, and Laserwriter are trademarks of Apple Computer Inc. Microsoft, Microsoft Windows NT, Microsoft Windows 2000, and Windows are trademarks or registered trademarks of Microsoft Corp.

Xerox is a registered trademark of Xerox Corp.

Other brand or product names are the trademarks or registered trademarks of their respective owners.

## FCC Compliance

The Creo equipment referred to in this document complies with the requirements in Part 15 of FCC Rules for a Class A computing device. Operation of the Creo equipment in a residential area may cause unacceptable interference to radio and TV reception, requiring the operator to take whatever steps are necessary to correct the interference.

## Limitation of Liability

The product, software or services are being provided on an "as is" and "as available" basis. Except as may be stated specifically in your contract, Creo Inc. expressly disclaims all warranties of any kind, whether express or implied, including, but not limited to, any implied warranties of merchantability, fitness for a particular purpose and non-infringement.

You understand and agree that Creo Inc. shall not be liable for any direct, indirect, incidental, special, consequential or exemplary damages, including but not limited to, damages for loss of profits, goodwill, use, data or other intangible losses (even if Creo has been advised of the possibility of such damages), resulting from: (i) the use or the inability to use the product or software; (ii) the cost of procurement of substitute goods and services resulting from any products, goods, data, software, information or services purchased; (iii) unauthorized access to or alteration of your products, software or data; (iv) statements or conduct of any third party; (v) any other matter relating to the product, software, or services.

Creo Inc.  
3700 Gilmore Way  
Burnaby, B.C., Canada  
V5G 4M1  
Tel: (1) (604) 451-2700  
Fax: (1) (604) 437-9891  
<http://www.creo.com>

739-00031A-EN  
Jan 2004

---

## Patents

This product is covered by one or more of the following U.S. patents:

RE37376	5247174	5420702	5625766	5854883	6031932	6181362
4456924	5247352	5420722	5636330	5861904	6043865	6181439
4500919	5249067	5459505	5649220	5861992	6060208	6186068
4558302	5283140	5473733	5650076	5864651	6063528	6189452
4743091	5291273	5481379	5652804	5875288	6063546	6191882
4992864	5296935	5488906	5680129	5894342	6072518	6204874
5049901	5313278	5497252	5691823	5900981	6090529	6208369
5079721	5323248	5508828	5691828	5934196	6096461	6214276
5081617	5325217	5509561	5696393	5942137	6098544	6217965
5103407	5331439	5517359	5699174	5946426	6107011	6252522
5111308	5333064	5519852	5699740	5947028	6112663	6260482
5113249	5339176	5526143	5708736	5958647	6115056	6266080
5122871	5343059	5532728	5713287	5966504	6121996	6266134
5124547	5355446	5561691	5739819	5969872	6130702	6267054
5132723	5359451	5568595	5742743	5973801	6134393	6268948
5150225	5359458	5576754	5764374	5986819	6136509	6283589
5153769	5367360	5579115	5764381	5995475	6137580	6295076
5155782	5367388	5592309	5771794	5996499	6147789	
5157516	5384648	5594556	5785309	5998067	6158345	
5177724	5384899	5600448	5802034	6003442	6159659	
5208818	5412491	5608822	5813346	6014471	6164637	
5208888	5412737	5615282	5818498	6016752	6180325	

## Contents

Software Kit Contents .....	1
New Features .....	2
New Graphic User Interface .....	2
Workspace- New Interface .....	2
View Menu .....	4
New Options in the Tools Menu.....	4
Job Parameters Window - New Interface .....	6
Handling Conflicts.....	7
Changes to the Print Settings Tab.....	7
Changes to the Color Tab .....	7
Changes to the Services Tab.....	8
Changes to the Exceptions Tab.....	8
Backing Up and Restoring the System .....	10
XPIF Support.....	10
Security Features .....	10
Dynamic Page Exception Enhancements .....	12
Enhanced Brisque Connectivity .....	13
Pre-Separated Files Support .....	13
Custom RGB Profiles Support.....	14
Font Downloader for Windows Fonts .....	14
Calibration Enhancements .....	15
Image Position on a Page Level.....	16
PDF2Go Enhancement .....	17
Revert to source .....	17
Split to Booklets Enhancements .....	17
New Imposition Templates.....	17
Support for New Languages .....	17
Web Viewer API .....	18
Printing Grays with K Toner .....	18
Incorrect Number of Pages Used in the Staple Option .....	19
Heavy Inserts Enhancements .....	19

---

VIPP 5.1 .....	19
Tips for Using the Spire CXP5000 Color Server.....	20
Running Antivirus Software .....	20
Loading Third-Party Software.....	20
Adding Printers on Client Workstations.....	20
Printing a DCS File.....	20
Setting Collation Options .....	21
Reverting to the Default Normal or Saturated Calibration Table .....	21
Embedded ICC Profiles .....	21
CMYK Emulation.....	22
Printing a Range of Pages (HCSS) .....	22
Ensuring Font Substitution .....	22
Selecting Staple Options.....	22
Setting the Image Size to Trim Size Ratio in Imposition .....	22
Printing from a Macintosh: Driver Requirements .....	22
Printing from Windows: Driver Requirements.....	23
Adjusting the Text Line Quality Parameter.....	23
Choosing a System Disk for Operations.....	23
Creo Spot Colors XT Version 2.3.1.....	23
Deactivating OPI .....	23
Printing an Area of 12 × 18 inches .....	23
Web Viewer .....	24
Spire DC2060_DC6060_COM Destination Profile .....	24
Spire Printing Over TCP/IP From Macintosh .....	24
Coated paper .....	24
Spire CXP5000 Color Server Limitations .....	25
Admin Page .....	25
Merged RTP Jobs .....	25
Progressive JPEG Images .....	25
Hot Folders .....	25
Exceptions for Imposed Jobs .....	26
Mapping Option in Profile Manager.....	26

---

Dynamic Page Exceptions Support .....	26
Imposed Sheet Range .....	26
Image Noise .....	26
Imposed Sheet View .....	27
Export as Insite .....	27
Novell Banner Page .....	27
Image Scale.....	27
Fit to Sheet Size in Imposition.....	27
LPR Printing .....	27
Mixed Paper Size in a Job .....	28
Importing Files from the Network.....	28
Drive A:\.....	28
Front and Back Cover for Saddle Stitch.....	28
Backup & Restore configuration .....	28
Variable Information (VI).....	28
Application Notes .....	30
QuarkXPress .....	30
PageMaker .....	31
Adobe Acrobat.....	31
FreeHand .....	31
Known Limitations of Adobe PostScript Features .....	31
Supported Microsoft Hot Fixes .....	32

This page intentionally left blank



---

## Software Kit Contents

The software kit includes five CD-ROMs (CD-ROM #1, CD-ROM #2A, CD-ROM #2B, CD-ROM #2C, and CD-ROM #3). Each CD-ROM is described below.

### CD-ROM #1 for the DocuColor 5252, and DocuColor 2000 Series

This CD-ROM includes the Microsoft® Windows® 2000 Professional operating system with a customized menu for reinstalling the CXP5000 Color Server.

**Note:** This version includes Internet Explorer 6.0 and Service Pack 3.0.

### CD-ROM #2B for the DocuColor 2000 Series

This CD-ROM contains the CXP5000 multilingual application software (setup files, PPD files, printer drivers, and utilities).

### CD-ROM #2C for the DocuColor 5252

This CD-ROM contains the CXP5000 multilingual application software (setup files, PPD files, printer drivers, and utilities).

### CD-ROM #3 for the DocuColor 5252, and DocuColor 2000 Series

This CD-ROM contains the utilities, and the *CXP5000 User Guide*. It also contains the customer release notes in PDF files in the following languages, English, French, German, Spanish, Italian, Portuguese, and Dutch.

The CD-ROM has both Macintosh® and Windows partitions and can be mounted on both platforms. You can add the *Installation Guide* and *Printing Guide* to any client workstation that has a CD-ROM drive and send the guides to any printer. You can submit the guides via the CXP5000 Color Server, and print them on the DocuColor 2045 and 5252 printers.

#### **To print the CXP5000 User Guide on the DocuColor 2045 and 5252 printers using the CXP5000 application:**

1. Make sure that the Spire CXP5000 workspace is open, and then insert CD-ROM #3 (Spire *CXP5000 Color Server Documentation and Utilities*) into the Spire CXP5000 CD-ROM drive.
2. From the **File** menu, select **Import Job**.
3. Browse to the CD-ROM, and select a file.
4. Click **Add to List**.  
The file appears on the right side of the **Import Job** dialog box.

5. Click **Submit**.

The selected file is submitted to the Spire CXP5000 color server to print.

## New Features





### New Graphic User Interface

Spire CXP5000 color server 4.0 software has a new design for the user interface. The user interface has been improved and updated.

### Workspace- New Interface

The Spire CXP5000 color server workspace includes the following changes:











- The **Pathways** panel was removed.
- A toolbar was added, and includes the following buttons:

Icon	Name	Description
	<b>Import</b> button	Shortcut to Import window.
	<b>Resource Center</b> button	Shortcut to Resource Center
	<b>Message Viewer</b> button	Shortcut to Message Viewer
	<b>Calibration</b> button	Shortcut to Calibration process

- The **suspend/resume** buttons for the **Print Queue** and **Process Queue** are in the **Queues** title area.
- Except for the workspace, all windows within the workspace are resizable.
- You can dock and undock all windows in the workspace. This option is available when you right-click the title bar in a window.

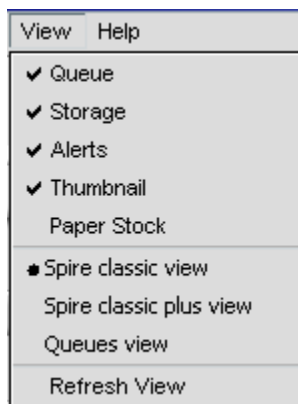


- You can drag and reorder columns, remove columns, and change a column's view. This option is available when you right-click the title bar in a column.
- The Alerts window has been improved, and now includes a separate area for alert descriptions.
- The Job status icons have been updated.

Queue	Icon	Job Status
Storage window		Completed jobs
		Failed jobs
		Held jobs
		Aborted jobs
<b>Print Queue and Process Queue</b>		Job is running
		Job is in freeze mode (held in <b>Print Queue</b> )
		Job is waiting
		Rush job
		Rush job in freeze mode
		Rush job is waiting

## View Menu

A View menu was added to the CXP5000 menu bar.



The View menu contains the following options:

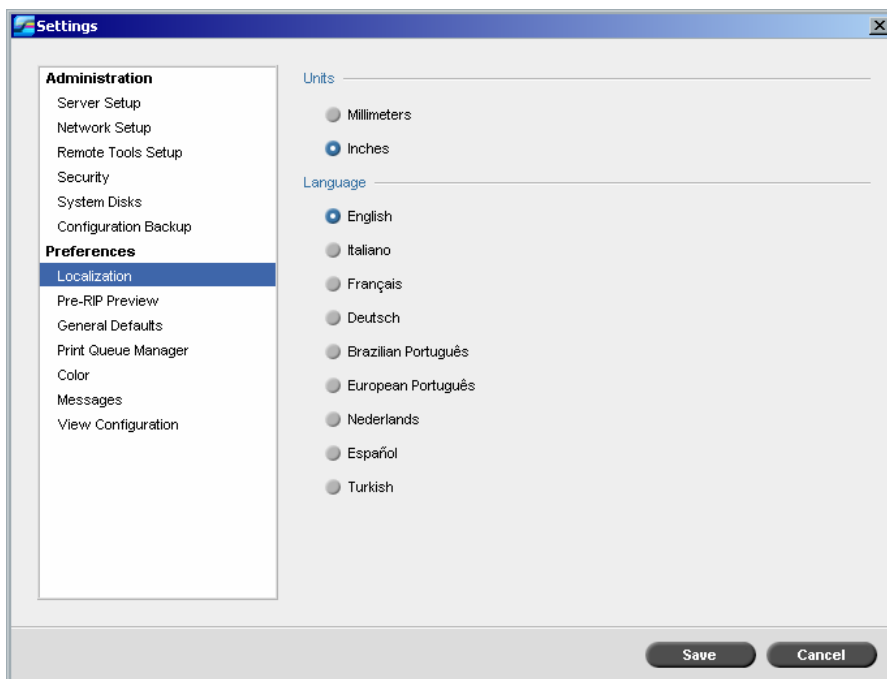
- Open or close the **Process Queue**, **Print Queue**, Storage window, Alerts window, Thumbnail window and Paper Stock window
- Spire classic view: Displays the **Status** panel, CXP5000 toolbar, Storage window, **Print Queue** and **Process Queue**, Thumbnail window and Alerts window
- Spire classic plus view: Displays the **Status** panel, CXP5000 toolbar, Paper Stock window, Storage window, **Print Queue**, **Process Queue**, Thumbnail window and Alerts window
- Queues window: Displays the **Print Queue** and **Process Queue**
- Refresh view: Enables you to go back to the factory default view for the view that is currently displayed

All views are customized; the CXP5000 workspace will always display the last view.

## New Options in the Tools Menu

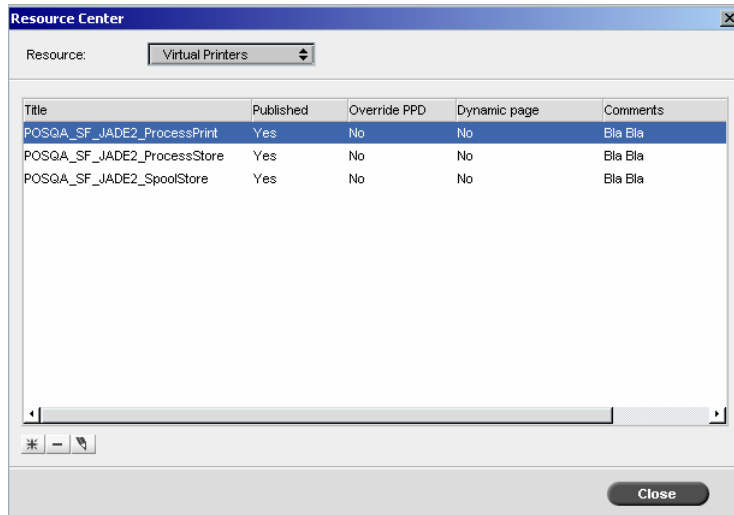
The Tools menu includes the following new options:

- **Settings**: Contains all system preferences, the window is divided into two lists, **Administration** and **Preferences**



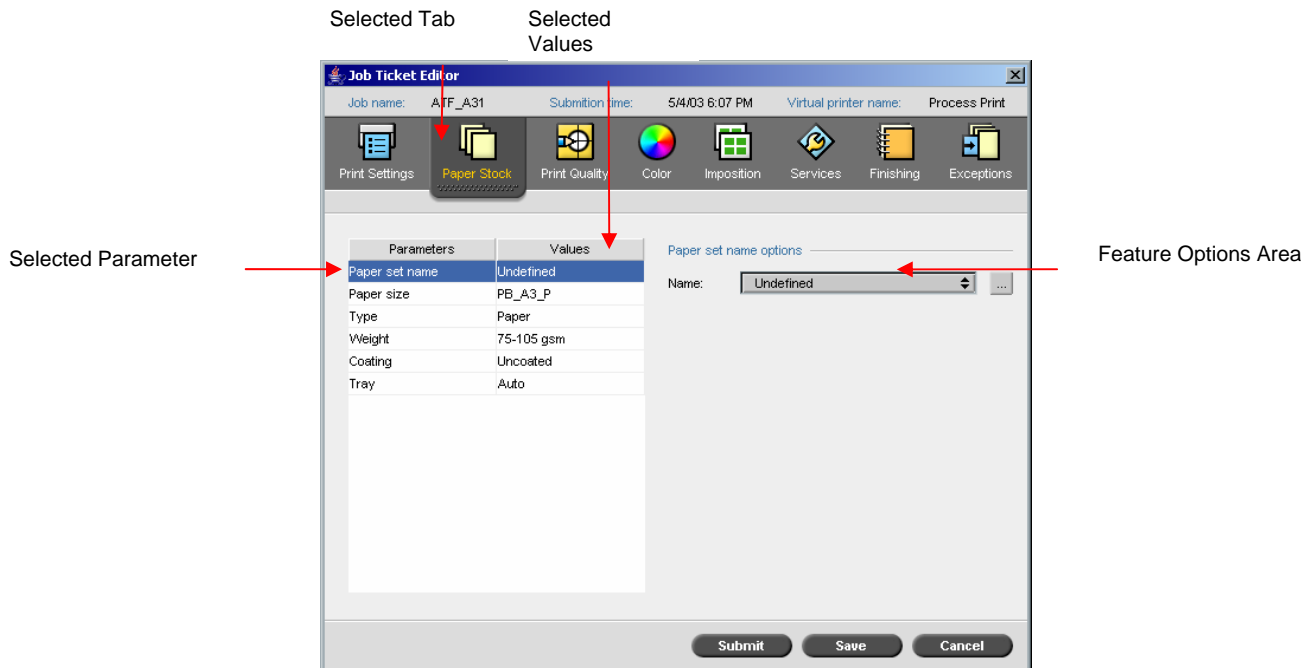
- **Administration:** This list contains the following items, **Server Setup**, **Network Setup**, **Remote Tools Setup**, **Security**, **System Disks**, **Configuration Backup**
- **Preferences:** This list contains the following items, **Localization** (units and languages), **Pre-Rip Preview**, **General Defaults** (default image size, OPI, Default archive path), **Print Queue Manager**, **Color**, **Messages**, **View Configuration**

- **Resource Center:** Enables you to add, remove, and manage CXP5000 external resources. The Resource Center provides the following features, **Virtual Printers, Cached VI Elements, Fonts, Profile Manager, User defined Imposition templates, Paper sets.**



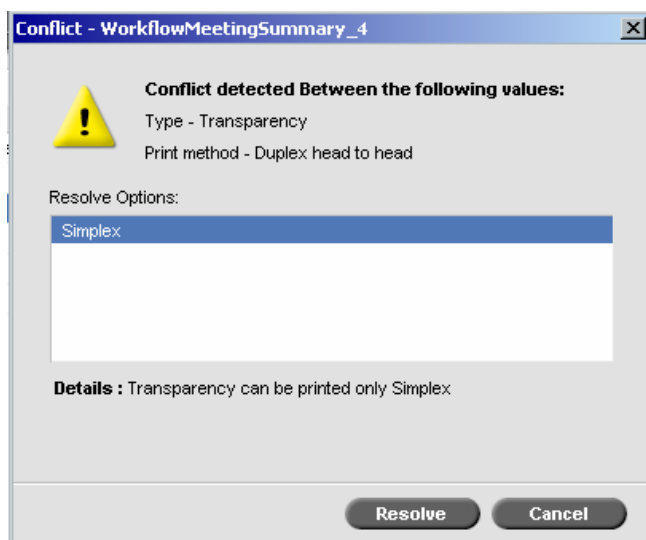
## Job Parameters Window - New Interface

The basic structure of the Job Parameters window remains the same. The Status bar now includes the name of the virtual printer that is used when you import a job.



## Handling Conflicts

If there are conflicts in the Job Parameters window, the Conflict window displays the two parameters that conflict—for example, Transparency conflicts with duplex printing. You can't print your job until the conflict is resolved.



To resolve the conflict, select **one** of the following options:

- In the **Resolve Options** area, select a resolve option, and then click **Resolve**.
- Click **Cancel** to remove the value you selected for the last parameter.

## Changes to the Print Settings Tab

The **Print order** parameter is new, and contains the following options, **1 to N**, **N to 1**.

The **Delivery** parameter is new, and contains the following options, **Face up**, **Face down**.

## Changes to the Color Tab

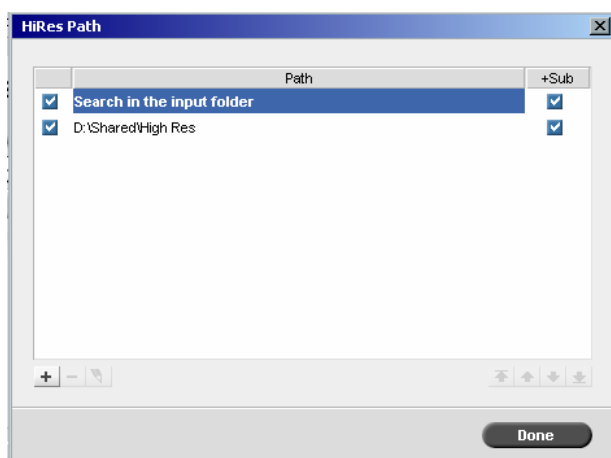
- The **Spot color workflow** parameter was added to the **Color** tab. This parameter enables you to decide whether or not to use the **Spire Spot color dictionary**.

**Note:** This option was removed from the Administration window.

- The **Emulate RGB Element** and **Preserve pure colors** options were added to the Job Parameters window, and can be found on the **Color** tab>**CMYK workflow**>**Emulation**.  
**Note:** This option was removed from the Administration window.
- The **Print grays using K toner** option is now in the RGB workflow.
- The **Destination** parameter was added to the Job Parameters window. This parameter enables you to assign a destination profile to a job.
- The **Color Adjustments** parameter contains **Brightness**, **Contrast**, and **Gradation** options.

## Changes to the Services Tab

The APR window has been enhanced, and includes the **Search in the input folder** check box. This check box is available each time you add an APR path.

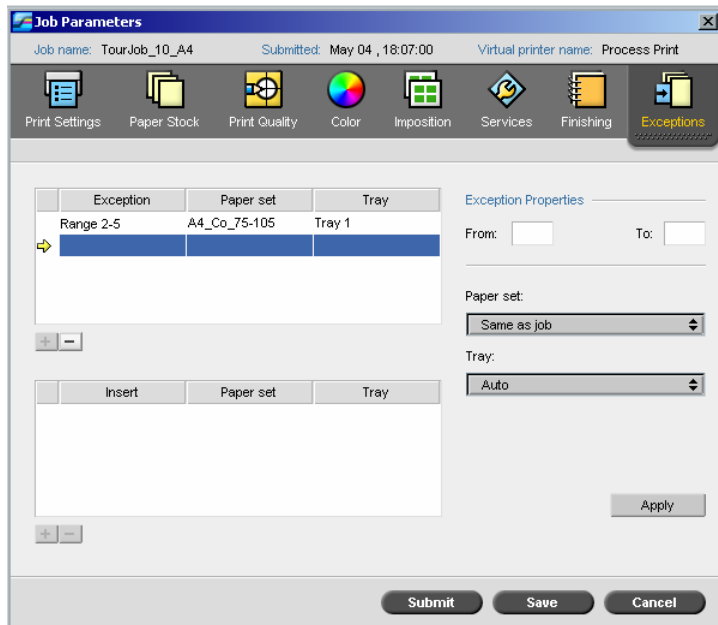


## Changes to the Exceptions Tab

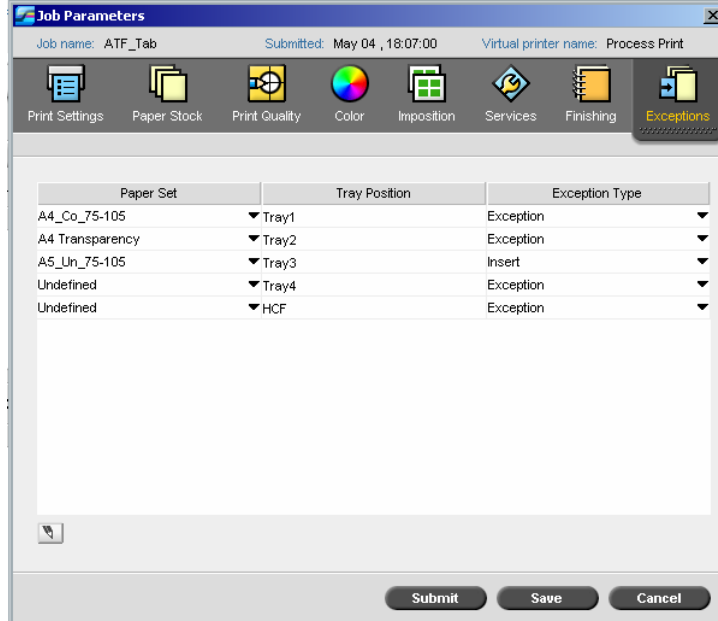
The **Exceptions** tab can be displayed in two different views.

The following screen capture shows the **Exceptions** tab for regular page exceptions.





The following screen capture shows the **Exceptions** tab for jobs that were imported via a dynamic page exceptions virtual printer.



---

## Backing Up and Restoring the System

The Spire CXP5000 color server has a system backup and restore procedure that shortens the reinstallation and configuration process of the Windows operating system.

The System Backup and Restore procedure is available on CD-ROM #1.

### To backup the system:

1. Insert CD-ROM #1, which includes the backup and restore procedure, into the CD/DVD-ROM drive, and then restart your workstation.
2. When the menu appears, select **Backup**.
3. The backup procedure begins.  
When the procedure is finished, remove the disk.

### To restore the system:

1. Check if the following directory exists, **D:\Backup**.
2. Insert CD-ROM #1, which includes the backup and restore procedure, into the CD/DVD-ROM drive, and then restart your workstation.
3. When the menu appears, select **Restore**.  
This will restore the last backup of the system **C:\drive**

## XPIF Support

The Spire CXP5000 color server can receive Xerox Programming Information Format (XPIF) and automatically convert this format to Spire CXP5000 color server job parameters.

**Note:** The Spire CXP5000 color server does not fully support staple options from a client workstation. Some options may cause a file to fail in print, and some options will cause a file to print with the wrong orientation.

## Security Features

The Spire CXP5000 color server has new and improved security features.

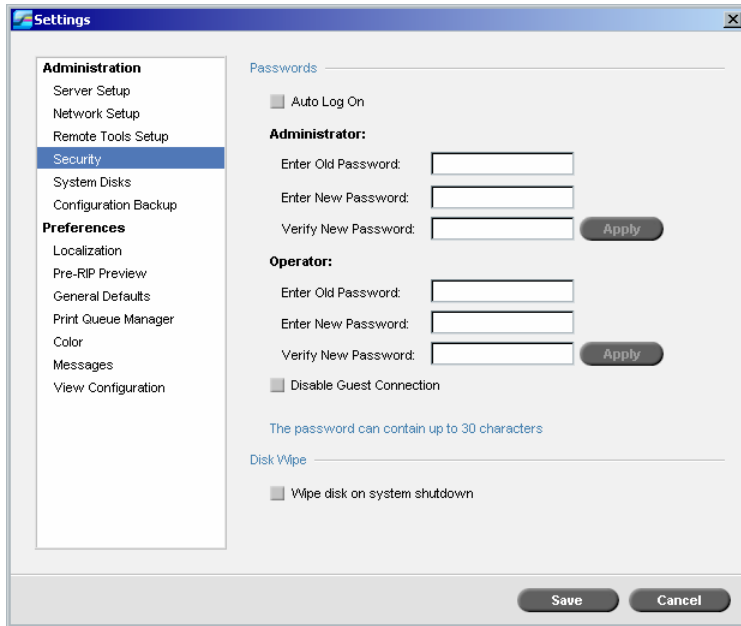
### Feature Access Control

This feature enables you to distinguish between three possible access levels on the Spire CXP5000 color server:

- **Administrator** – User has the highest access level and privileges to all Spire color server options
- **Operator** – User can fully operate the Spire application, but can't edit any of the **Administration** items in the Settings window

- **Guest** – Temporary user that can only submit a job using an existing virtual printer.

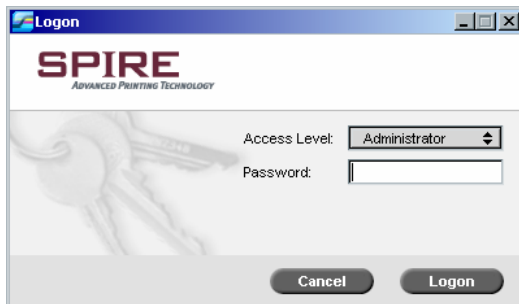
By default, the Spire CXP5000 color server is set to **Auto Log On**. This option enables you to operate the Spire CXP5000 color server as an administrator. If you want to designate different access levels for each user, you need to set **Security** settings in the Settings window.



The following options are available in the Security window:

- **Auto Log On:** Enable users to log on automatically without going through the Logon dialog box
- Change **Administrator** and **Operator** passwords (**Guest** does not require a password)
- **Disable Guest Connection:** Prevents guest users from accessing the Spire CXP5000 color server

If you clear the **Auto Log On** check box, you will have to log on to the Spire CXP5000 color server via a Logon dialog box. This dialog box appears when you attempt to load the Spire CXP5000 color server application.



---

The Logon dialog box enables you to log on to the Spire CXP5000 color server with a designated access level and password.

**Note:** If you are already logged on to the Spire CXP5000 color server workspace you can change your access level—for example, if you are logged on as an operator and you need administrator privileges. To change your access level, from the **Job** menu, select **Logon as a different user**.

**Note:** If you forget your password, use one of the following recovery options:

- Auto log on option
- Reinstall the Spire CXP5000 color server application

### Disk Wipe

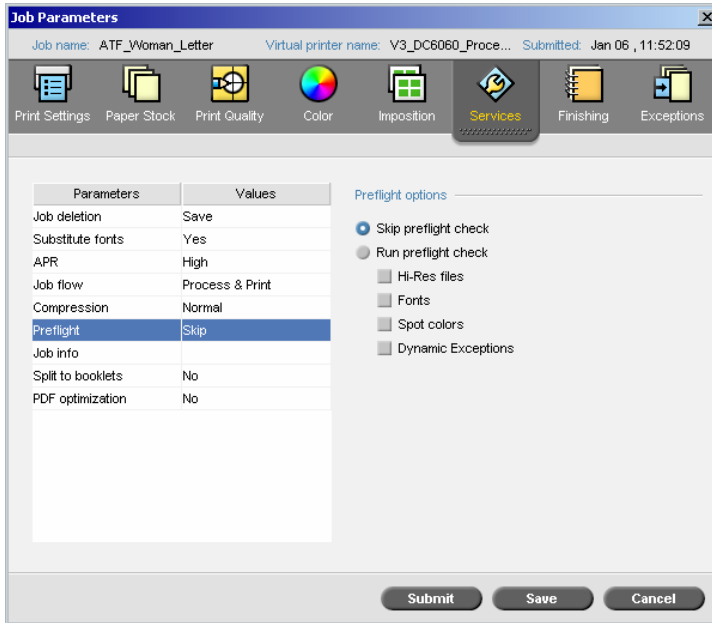
Normally, when you delete a file, the file's dictionary entry is removed but data still remains on the disk. The Disk Wipe utility enables you to clear previously deleted files. Disk Wipe eliminates the contents of your deleted files by scanning all of the empty sectors on the disk and replacing them with zeros. Nonempty sectors are left untouched. This feature enables you to work in a more secure environment. If there is a system shutdown, the disk wipe operation can begin immediately.

**To select the disk wipe operation:**

1. Go to **Administration>Security**.
2. In the Disk Wipe area, select the **Wipe disk on system shutdown** check box.

### Dynamic Page Exception Enhancements

- The **Preflight** parameter enables you to check if your file includes dynamic page exception commands. The new **Dynamic Exceptions** check box can be found under the **Preflight options area**.



- More dynamic page exception commands within a job are supported:
  - True Inserts within a job
  - Plex SPD commands
  - XRX commands in PDF

## Enhanced Brisque Connectivity

The Spire CXP5000 color server enables enhanced Brisque connectivity. You can install Microsoft Windows Services for UNIX (SFU) version 3.0 on the Spire CXP5000 color server. Windows SFU version 3.0 adds UNIX NFS (Network File System) protocol compatibility to a Windows workstation. This compatibility enables UNIX platforms to mount the workstation's volume.

After you complete the SFU installation, the **Send** option from the Brisque File Manager is available to the Spire CXP5000 color server hot folders or shared volumes.

**Note:** The Spire CXP5000 color server does not support PSM (Brisque station on Mac platforms).

## Pre-Separated Files Support

The Spire CXP5000 color server now supports Pre-Separated PostScript files and DCS Files. These files will be printed as composite files.

---

**Limitations:** Pre-Separated files conflict with the following parameters, **Color mode=Grayscale**, **Exceptions** and **Admin page**.

## Custom RGB Profiles Support

You can import RGB source profiles via the **Profile Manager**. After you import an RGB source profile, it appears in the **Color tab>RGB Workflow** parameter.

## Font Downloader for Windows Fonts

The Spire CXP5000 color provides a special hot-folder for downloading fonts from a Windows client workstation. The hot folder is published in the Spire CXP5000 color server **D:\Hot Folders \ HF\_Fontdownloader**.

You can use the **HF\_Fontdownloader** hot folder to install new or missing fonts to the Spire CXP5000 color server fonts dictionary. You can drag the hot folder to your desktop to create a short cut. The fonts are installed when you drag the fonts to the **HF\_Fontdownloader** hot folder.

The following client operating systems are supported:

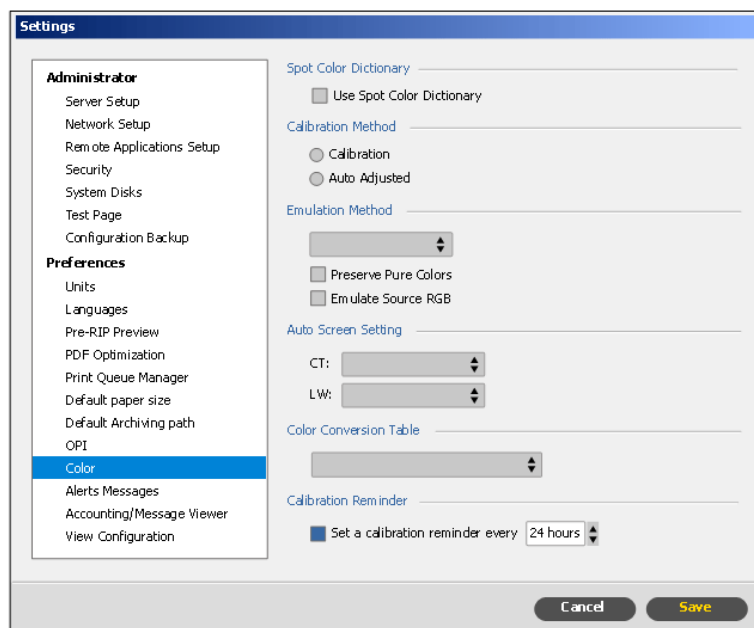
- Windows 2000
- Windows NT
- Windows XP
- Windows 98
- Windows ME

The Spire CXP5000 color server supports the following font types, True type and Type 1 (PFA & PFB).

**Note:** After you restart the Spire application, installed fonts are displayed in the Resource Center>**Fonts**.

## Calibration Enhancements

### Calibration Reminder



You can set the Calibration Reminder to remind you when to perform calibration. Select the check box under **Preferences>Color**. The **calibration reminder** indicator will appear on the printer icon when you need to calibrate.



### Coated and Uncoated Calibration

The Spire CXP5000 color server is provided with different targets for coated and uncoated paper. As a result, two different look up tables are produced for coated and uncoated paper. This enables you to take advantage of the large gamut provided for coated paper.

### Coated and Uncoated Destination Profile

The Spire CXP5000 color server is provided with different destination profiles for coated and uncoated paper. For each predefined destination profile (GA or COM), the Spire CXP5000 color server has two destination profiles, coated and uncoated.

The correct destination profile is used according to the paper stock you select:

- If the coating that is selected is coated, a coated destination profile is used for the color transformation.
- If the coating that is selected is uncoated, an uncoated destination profile is used for the color transformation.

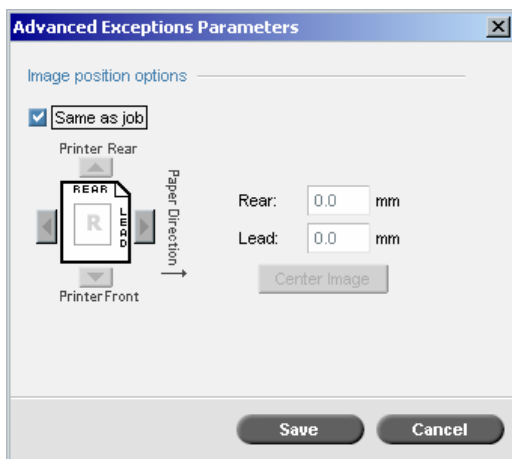
**Note:** A change in coating may cause re-RIP.

## Image Position on a Page Level

The **Exceptions** tab was enhanced and enables you to use the image position tool to shift an image on a specific page or range of pages. To define an image position on a specific page or range of pages, select the **Exceptions** tab, define the page range, and then click **Advanced** to define the shift.

Perform the following steps to define the image position:

1. Click **Advanced**.

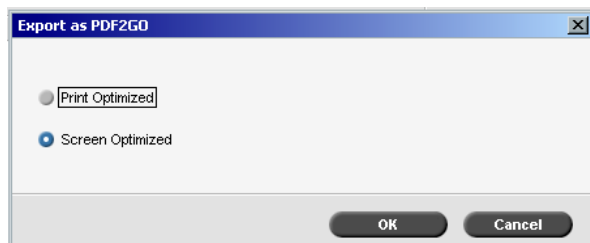


2. Clear the **same as job** check box.
3. To shift an image, follow one of these steps:
  - a. Click the arrows to shift the image on both sides.
  - b. Type a value in the **Rear** and **Lead** boxes
  - c. To set the values back to 0.0, click **Center Image**
4. Click **Save**.
5. Click **Apply** to add changes to the selected range.



## PDF2Go Enhancement

You can now export RTP files as PDF2Go files. There are two output resolutions available:



- **Print Optimized** - Generates a high-resolution PDF file in 300dpi.
- **Screen Optimized** - Generates a low-resolution PDF file in 72 dpi, use this option when you want to generate a light PDF file—for example, a file that you can send as a proof by e-mail.

## Revert to source

You can now remove the raster data of an RTP job. This option is available for jobs in the Storage window. Right-click a job and select **Revert to Source**.

## Split to Booklets Enhancements

You can now use the **Split to booklets** parameter for a VI job. A VI job that has one booklet structure can be split.

**Note:** Unexpected results might occur when you use this option for VI jobs that already have a booklet structure.

## New Imposition Templates

The following step & repeat templates were added to the Spire CXP5000 color server predefined list, 9 x 3, 3 x 9, 5 x 4, 4 x 5, 2 x 4, 3 x 3, 5 x 6, and 6 x 5.

## Support for New Languages

The Spire CXP5000 color server workspace and PPD file supports two additional languages, Turkish and European Portuguese.

## Web Viewer API

The Web Viewer API enables you to retrieve information about the job list and printer status via XML files.

The **JobList.xml** file contains details about the job status for the **In Print** queue, **In Process** queue, and the **Storage Folder**.

To retrieve the **JobList.xml** file, type the following URL:

**http://<ComputerName>/WebViewer/GetView.asp?View=JobList\_xml.**

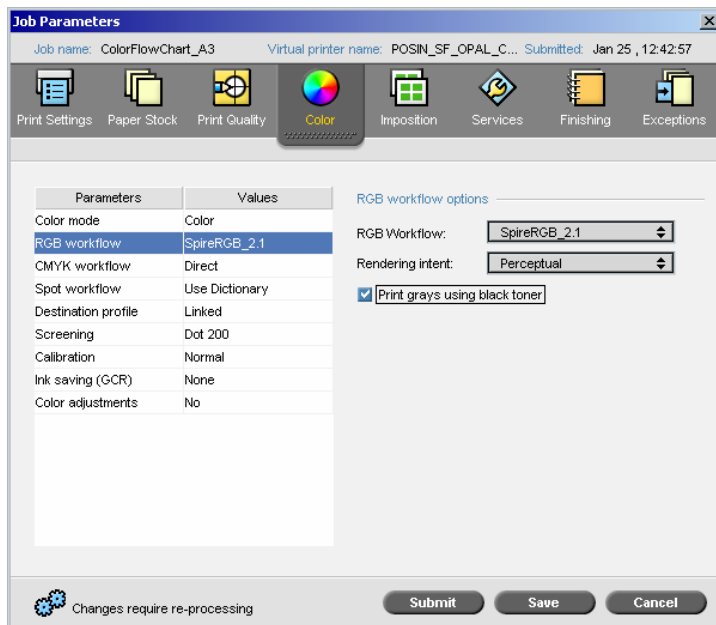
The **PrinterStatus.xml** file contains data about the printer status.

To retrieve the **Printerstatus.xml** file, type the following URL:

**http://<ComputerName>/WebViewer/GetView.asp?View=PrinterStatus\_xml.**

## Printing Grays with K Toner

In Device Link Mode, the ‘**Print grays using black toner**’ option affects only RGB elements that are text or graphics elements. Images will not be affected by this option.



The **Print Grays using black toner** option not only affects R=G=B values, but may also cause slightly different values (R+/-4=B+/-4=G+/-4) to produce gray.

**Note:** In CSA mode, this option will affect also RGB Image data.

## Incorrect Number of Pages Used in the Staple Option

- If a staple option is applied to a single page job, the page will be printed to the **HCSS Stack Tray** without being stapled.
- If a staple option is applied to a job that contains too many pages, the job will fail in the **Print Queue**, and the following message will appear in the Alerts window, “Job can’t be printed and stapled due to page quantity, cancel the staples option.”

## Heavy Inserts Enhancements

Heavy weight inserts to a duplex job, such as transparencies or 220gsm, are now supported.

## VIPP 5.1

The Spire CXP5000 color server now supports VIPP 5.1.

---

## Tips for Using the Spire CXP5000 Color Server

### Running Antivirus Software

The Spire CXP5000 color server was successfully tested with McAfee® VirusScan® 7.0 for Windows 2000 Professional server antivirus software. Avoid using the automatic scanning mode and activate the antivirus software only when the Spire CXP5000 color server application is closed.

Before you install the Spire CXP5000 color server, make sure that you close all other applications, including antivirus applications.

**Note:** McAfee VirusScan is not included in the software kit.

### Loading Third-Party Software

Except for the antivirus software, do not load unauthorized software onto the Spire CXP5000 color server.

### Adding Printers on Client Workstations

To install printers on client workstations, it is recommended that you use the Adobe PostScript™ driver utility from CD-ROM #3.

**Note:** When you update or install a new version, you must remove the old printers from the client workstation and install the new ones.

### Printing a DCS File

The CXP5000 can process input files with embedded DCS1 or DCS2 (Adobe® Photoshop®) format files.

**To print a DCS file:**

1. Place the DCS file in a desktop publishing application such as QuarkXPress® or FreeHand®.
2. Copy the DCS file to the Spire CXP5000 color server **High Res** folder (**D:\Shared\High Res**).
3. In the Job Parameters window or in the PPD, select the **Print Quality** tab.
4. In the **PS Overprint** options, select **Yes**.

---

5. Print the file in composite mode.

**Note:** You can use a different path for the high-resolution DCS files. Make sure you add the path to the Creo APR search paths on the **Services** tab in the Job Parameters window.

## Setting Collation Options

Most printer drivers and Microsoft Office applications support a collation option. To receive properly collated or stapled output, clear the **Collate** option in the print driver and in the application, and then select the **Collate** option in the PPD file.

## Reverting to the Default Normal or Saturated Calibration Table

If the **Normal** or **Saturated** calibration table has been edited, and you wish to revert to the Spire CXP5000 color server default calibration table, perform the following steps:

1. From the **Tools** menu, select **Calibration**.  
The Calibration window appears.
2. From the **Calibration Name** list, select **SpireNormal** or **SpireSaturated**.
3. Click **Edit**.  
The Edit Calibration window appears.
4. Click **Save As**.  
The Save As dialog box appears.
5. In the File Name box type **Normal** or **Saturated**.
6. Click **OK**.  
A message appears.
7. Click **Yes**.

## Embedded ICC Profiles

Adobe and the Spire CXP5000 color server support PostScript color management, CSA and CRD workflows. The CSA is extracted from the ICC profile only when you select PostScript color management in your DTP application. The Spire CXP5000 color server uses the embedded CSA when you set the **RGB Workflow** or **CMYK Workflow** parameters to **Use Source CSA** (Job Parameters window>**Color** tab).

## CMYK Emulation

Avoid ICC profile names that contain spaces or the improper characters. Examples of invalid characters are as follows: ! @ # \$ % ^ & \* ( ) - / ? > < ' " ; : ] [ { } \

## Printing a Range of Pages (HCSS)

For duplex printing, enter page numbers that have a continuous page range. For example, type 1 - 10. Don't enter page numbers that are separated by a comma. For example, do not type 5 , 10 , 12.

## Ensuring Font Substitution

If the Spire CXP5000 color server fails to substitute fonts and no fonts are printed in the output, clear the **Font Substitution Off** check box in the virtual printer.

## Selecting Staple Options

Regardless of whether the image orientation is set to Portrait or Landscape, the available staple options include both Portrait and Landscape. Be sure to select the staple orientation option that matches your image orientation. If you do not, the image might be cropped.

## Setting the Image Size to Trim Size Ratio in Imposition

Be sure to set the ratio of image size to trim size in to less than 3.0. If the value is greater, the job might fail to print. For example, do not place two tabloid size images that are trimmed to letter size on a tabloid size sheet.

## Printing from a Macintosh: Driver Requirements

The supported Mac OS<sup>®</sup> is 9.x. and later. The recommended printer driver depends on the version of the operating system that you use. Unknown problems can occur if other drivers are used.

Mac	Recommended Printer Driver
9.x. and higher	LaserWriter 8.7

The Spire CXP5000 color server does not require any driver installation for Mac OS X. To print to the Spire CXP5000 color server from Macintosh OS X, use the Print Center application, and then select **Add** to add the virtual printer.

---

## Printing from Windows: Driver Requirements

<b>Windows</b>	<b>Recommended Printer Driver</b>
Windows NT <sup>®</sup> , 2000, XP	Adobe PostScript <sup>®</sup> Driver 5.2.1
Windows 98 <sup>®</sup> , ME	Adobe PostScript Driver 4.5.2

**Note:** Windows NT and 2000 clients may be required to log on to the Spire CXP5000 color server printer after rebooting or when logging on as a different user. The default log on name is “operator” and the password is “spire.”

## Adjusting the Text Line Quality Parameter

When a job contains complicated graphic work (line work) and the **Text Line Quality** parameter in the Job Parameters window is set to **High**, the following message may appear:

```
Job <Job Name>cannot be processed with Text/Line Quality High.  
Change the Text/Line Quality parameter to Normal and resubmit the  
job.
```

Follow the instructions in the message.

## Choosing a System Disk for Operations

Do not perform any operations, such as archiving, on disk C. Perform these operations on disk D.

## Creo Spot Colors XT Version 2.3.1

It is recommended not to work with Creo Spot Colors XT version 2.3.1XTension when you use QuarkXPress.

## Deactivating OPI

When you use Creo APR in the Spire CXP5000 color server make sure that the OPI XTension in QuarkXPress is not active. Alternatively, in the Settings window>**Preferences**>**General Defaults**, clear the **Enable OPI Spire Support** check box.

## Printing an Area of 12 × 18 inches

Use paper that is 12.6 × 19.2 inch paper to print a full print area of 12 × 18 inches.

---

## Web Viewer

To connect to the Spire CXP5000 color server from a Macintosh client workstation, use the Spire CXP5000 color server IP address. You can obtain the IP address from the Spire CXP5000 color server > **Network** tab.

The Web Viewer runs only on Explorer 5.0 browsers and higher and is suitable for both Macintosh and Windows platforms.

## Spire DC2060\_DC6060\_COM Destination Profile

If a job that contains shades of blue does not print to your satisfaction—for example, the blue shades appear too purple—use the predefined SpireDC2060\_6060COM destination profile, and then use the required emulation.

## Spire Printing Over TCP/IP From Macintosh

The Spire over TCP/IP connection enables Macintosh clients to print jobs to the Spire CXP6000 color server over a TCP/IP protocol. This connection allows a significantly higher spooling speed.

To set up TCP/IP printing from the Macintosh, download the **Choose Spire Over IP** installer from the Spire CXP5000 color server **D:\Utilities** folder. For more information see the *Spire CXP5000 Color Server User Guide*.

**Note:** To enable the Spire Over TCP/IP connection, a Macintosh OS version 9.x or higher, with an installed LaserWriter application version 8.6 or higher, or AdobePS 8.8 or higher is required. If you do not have a compatible LaserWriter application installed, you can download this application from the Spire CXP5000 color server, under D:\Utilities\Mac utilities folder.

## Coated paper

Be sure the coated paper media weight programmed in the Job Ticket or ppd matches the actual weight set in the DocuColor Digital Color Press.



---

## Spire CXP5000 Color Server Limitations

### Admin Page

- When you print the **Admin Page**, the **Color Server Name** box displays the name of the color server as it appears on a Macintosh client workstation and displays the client workstation name as it appears on a Windows client workstation.
- When you print the **Admin Page**, the **Sender Name** box displays the owner name as it appears on the Macintosh OS 9.x client workstation and displays the user name as it appears on Macintosh OS X.
- In imposition, when you select the **Fit to Page** option for the **Admin Page**, the image scale changes.
- The **Admin Page** is printed only in English.
- Updates to the Admin page will require the job to be re-processed after making changes in the Jot ticket parameters.

### Merged RTP Jobs

After you merge jobs in the **Job Preview & Editor** tool, do not change any job parameters that require re-RIPing, such as **Color Emulation**, and **Image Quality**.

### Progressive JPEG Images

Progressive JPEG images are not supported.

### Hot Folders

- You cannot import TIFF files to the Spire Color Server via a hot folder.
- Submit Brisque jobs under **foldername.job** and not just the **.assign** file.
- Submit single pages of a Brisque job under **foldername.p**.
- In Windows 98, if the printer name is more than eight characters; the hot folder name and icon do not appear.
- In Windows ME, if the printer name is more than 11 characters; the hot folder name and icon do not appear.

---

**Note:** You may save these virtual printers under a shorter name and use their corresponding hot folders instead.

## Exceptions for Imposed Jobs

- When you use the **Step & Repeat** template with the **Cut & Stack** option, the **Exceptions** tab is unavailable.
- In imposition, you cannot set paper size as an exception.
- In imposition, do not use the **Front cover** or **Back cover** parameters to print front or back covers. Instead, use the **Exceptions** tab in the Job Parameters window, and specify sheet number one as an exception in the job.

## Mapping Option in Profile Manager

The Mapping feature doesn't always function as expected in this version; destination profiles that are assigned to specific paper colors do not take effect on the print results.

## Dynamic Page Exceptions Support

If you print a job using a dynamic page exceptions virtual printer, **Imposition** tab in the Job Parameters window is unavailable.

## Imposed Sheet Range

This feature is available only for imposed RTP jobs.

For imposed, non-VI RTP files, the **Page Range** is automatically changed to **Imposed Sheet Range**. An exception is that for such step-and-repeat files, the print range is **Page Range** and not **Imposed Sheet Range**.

For imposed VI RTP files, the print range is **Booklet Range**. For cut-and-stack files, however, the print range parameter is unavailable.

A sheet refers to one side of the physical piece of paper. In duplex printing, each sheet is counted twice, for example—sheet 1, would have, side A and side B.

## Image Noise

Image noise affects only continuous tone (CT) elements.

## Imposed Sheet View

The **Imposed Sheet** tab is available only for imposed RTP jobs.

If you merge an imposed RTP job, you need to save the newly merged job. Then you can preview the new imposed sheet with the **Job Preview & Editor** tool.

## Export as Insite

Export as InSite is available only for non-VI RTP files.

**Note:** Synapse InSite is an Internet portal that provides customer interaction via Web UI, uploads/downloads, and track Job activities, and add Job notes and approval cycle.

## Novell Banner Page

A banner page in a Novell network is not supported.

## Image Scale

You cannot use the **Image Scale** parameter with the **PDF Optimization** utility.

If you select the **Image Scale** parameter, it automatically clears the **Enable PDF Optimization** checkbox.

The **Image Scale** parameter does not support VI jobs.

## Fit to Sheet Size in Imposition

The **Fit to Sheet Size** check box on the **Imposition** tab (**Template** parameter) does not support VI jobs.

The **Fit to Sheet Size** check box on the **Imposition** tab (**Template** parameter) cannot be used with the **PDF Optimization** utility.

## LPR Printing

All LPR commands that are related to job programming such as **Print Method** or **Number of Copies** are not supported.

## Mixed Paper Size in a Job

To print a job that uses mixed paper sizes, make sure that you place all of the paper in the same feed direction—for example, SEF or LEF.

## Importing Files from the Network

Before you import a file from the network, establish a connection with the relevant host.

## Drive A:\

Drive A:\ is not available in the Spire CXP5000 color server Import window, Open dialog box, or any such file management dialog boxes.

## Front and Back Cover for Saddle Stitch

If a cover is added to a file that has the **saddle stitch** option selected, the middle page of the booklet will be printed on the paper stock used for the cover.

## Backup & Restore configuration

When restoring configuration from backup, note that not all user define resources (e.g. Virtual printer, custom profiles) are restored back properly, also Paper set list can't be restored.

## External CD

Importing files directly from CD or defining high-res path to a CD is not recommended. Please copy related files to a shared folder.

## Variable Information (VI)

### Variable Print Specification Process

It is recommended that you use the Creo Darwin application version 4.5 or later.

In general, the DocuColor models 2045 and 5252 handle variable information jobs efficiently in segmented run lengths. You should always break down large complex jobs into smaller run lengths to achieve maximum throughput. The exact size of the run length depends on the amount

---

of variable coverage and the element's demographics (the size and percentage of variable text as compared to images and graphics).

You should perform regular disk maintenance to ensure trouble-free operation.

### Printing Retrieved VIPP jobs

If you want to print a retrieved VIPP job, clear the **Print Range** parameter. If you don't clear this parameter, the job might fail in the **In Print** queue and then the following message would appear:

```
Job Failed in Print. Please try to resubmit the job.
```

After the job is RIPPed, you can select the **Print Range** option again.

### VI Job Thumbnails

- If you use the **Job Preview & Editor** tool to view thumbnails of VI jobs that include multiple records, the generation of all the thumbnails on the pages of the selected VI job can take some time. While the thumbnails are being generated, no other job can be selected.
- Open the thumbnails of VIPP and/or Variable Print Specification jobs that have already been RIPPed and are in the Storage Folder only if you want to view thumbnails of the entire VI job.

### File-Naming Convention

Make sure that you follow the naming conventions specified in the *CXP5000 Printing Guide*. Improper characters and file names with spaces can cause problems.

- Avoid using the following characters in image and job file names : ! @ # \$ % ^ & \* ( ) - / ? > < ' " ; : ] [ { } \ |. In some cases, the Spire CXP5000 color server substitutes an underscore ( \_ ) in file names that contain these characters. As a result, the high-resolution images cannot be used when Creo APR is in use.
- Do not enter a space at the beginning or end of a file name.
- Before you create any Darwin Variable Print Specification file, it is recommended that you check the database file and all image files for invalid characters and then edit the files.

### Variable Print Specification Image Files

The Spire application supports file types that use the Creo APR (Automatic Picture Replacement) feature and the Synapse PrintXT extension. The supported file types are EPS, TIFF, and CT.

**Note:** General PostScript errors may result when Synapse PrintXT is set to perform image swapping on unsupported file types (PDF, LZW compressed TIFF, and grayscale bitmaps).

## Print Shop Mail Jobs

- Print Shop Mail jobs that contain VI elements in landscape orientation are processed and printed in portrait orientation.
- Print Shop Mail supports EPS images only.
- Variable Print Specification files that are generated from Print Shop Mail version 4.36 for Macintosh and version 4.1 ~build 72 for Windows are not imposed correctly in the Spire CXP5000 color server.

## Application Notes

### Microsoft Office Programs

In Microsoft Windows NT and Windows 2000, you cannot define custom page sizes in Microsoft Word. The setting reverts back to A3.

### QuarkXPress

#### Printing Transparencies

##### To print transparencies from QuarkXPress®:

In the Page Setup dialog box under PPD options, select a page size (**A4** or **Letter**), and then select the media type (**Transparency**).

In imposition, when you use QuarkXPress files with a custom paper size and landscape orientation, define the width and height of the paper as follows:

- **Document setup:** Set the width to a long edge measurement, for example, width = 11 inches. Set the height to a short edge measurement, for example, height = 8.5 inches.
- **Print window:** Set the width to a short edge measurement, for example, width = 8.5 inches. Set the height to a long edge measurement, for example, height = 11 inches.
- **PPD, Custom:** Set the width to a long edge measurement, for example, width = 11 inches. Set the height to a short edge measurement, for example, height = 8.5 inches.

In the Printer Driver dialog box, on the **Output** tab, the only available resolution is **300dpi**, although the DocuColor 2045 and 5252 printer prints files in 600dpi. Disregard the resolution setting.

---

## PageMaker

- All operating systems enable you to select transparencies with a custom paper size, but the printer can print transparencies only in A4 and letter size.
- All operating systems enable you to select a custom paper size and tray 1 or 2, but the printer can print custom paper sizes only from trays 3 and 4.

### PageMaker in Windows

- In PageMaker<sup>®</sup>, there are no error messages from the PPD when you select the HCSS and Printer Default (Face Up). Face down must be selected.
- For PageMaker files for which you have selected **Landscape** orientation and **Duplex** mode properties, **Head to Head** prints as **Head to Toe**, and **Head to Toe** prints as **Head to Head**.
- In PageMaker 6.5, there is no PPD constraint when you select the **Staple** option and then choose **Face Down** and **Collate**.

### PageMaker in Mac OS

- You cannot define a custom page size in PageMaker for Macintosh. The page size reverts to letter. An image that is larger than letter size, is cropped.
- On a Macintosh, if you use PageMaker and select the **Staple** option, the **Admin Page** prints incorrectly. The first sheet of the job is duplicated and is printed instead of the **Admin Page**.

## Adobe Acrobat

- For Adobe Acrobat<sup>®</sup> (Windows version) PostScript files that are set to **Duplex** mode, **Head to Head** prints as **Head to Toe**.
- For Acrobat files that are set to **Landscape** orientation and **Duplex** mode, **Head to Head** prints as **Head to Toe**.

## FreeHand

In FreeHand, if you select the **Staple** option, the **Admin Page** does not print.

## Known Limitations of Adobe PostScript Features

The following applications do not support all PostScript features. Usually the application simply ignores the feature, but in rare cases, a printing error occurs.

Application	Unsupported Driver Options
Acrobat 5.05	Rotated Landscape, Mirror Image, Negative Image
CorelDRAW® 10.0	Scaling, Mirror Image, Negative Image
FrameMaker® 5.5	Rotated Landscape
FreeHand 9.0, 10.0	N-up, Scaling, Landscape, Rotated Landscape, Mirror Image, Negative Image, Watermark, OpenType
Illustrator 10.0	Watermark, Euro
InDesign® 2.0	Scaling
PageMaker 7.0	N-up, Scaling, Rotated Landscape, Mirror Image, Negative Image, Watermark, Euro
Photoshop 6.01	Watermark, Euro
QuarkXPress 4.11	N-Up, Rotated Landscape, Mirror Image, Watermark, Euro,

**Note:** Some applications support Rotated Landscape only when it is set as the default from the Printers folder.

**Workaround:** Do not use these PostScript features when you print from the applications listed. Newer versions of these applications may resolve these incompatibilities.

## Supported Microsoft Hot Fixes

Hot Fix No.	Date	File Name
MS03-026	July 16, 2003	823980
MS03-032	August 20, 2003	822925
MS03-039	September 10, 2003	824146
MS03-040	October 3, 2003	828750
MS03-041	October 15, 2003	823182
MS03-042	October 15, 2003	826232
MS03-043	October 15, 2003	828035
MS03-048	November 12, 2003	824145