



Fiery® EXP50 Color Server



Printing from Mac OS

© 2006 Electronics for Imaging, Inc. The information in this publication is covered under *Legal Notices* for this product.

45055364

24 March 2006

CONTENTS

INTRODUCTION	5
Terminology and conventions	5
About this document	6
User software	6
Downloading printer drivers using WebTools	7
Downloading printer drivers from the Fiery EXP50	8
System requirements	8
SETTING UP PRINTING ON MAC OS X	9
Installing Mac OS X printer drivers and printer description files	9
Setting Up the Fiery EXP50 on Mac OS X	10
PRINTING FROM MAC OS X	14
Printing from applications with Mac OS X	14
Setting print options and printing from Mac OS X	14
Defining custom page sizes from Mac OS X	19
Enabling Two-Way Communication	21
INDEX	23





INTRODUCTION

This document describes how to install printer drivers and printer description files for the Fiery EXP50 Color Server, and how to set up printing from Mac OS X computers. It also describes how to print to the Fiery EXP50. For information about setting up network servers and clients to use the Fiery EXP50 Color Server, see *Configuration and Setup*. For general information about using the digital press, your computer, application software, or network, see the documentation that accompanies those products.

The Fiery EXP50 Color Server supports the DocuColor 5000 digital press.

Terminology and conventions

This manual uses the following terminology and conventions.

Term or convention	Refers to
Aero	Fiery EXP50 (in illustrations and examples)
Digital press	DocuColor 5000 digital press
Fiery EXP50	Fiery EXP50 Color Server
Mac OS	Apple Mac OS X
Titles in <i>italics</i>	Other documents in this set
	Topics for which additional information is available by starting Help in the software
	Tips and information
	Important information
	Important information about issues that can result in physical harm to you or others

The Fiery EXP50 includes support for WebTools, which allows you to download printer drivers and printer description files to your desktop for installation on your Mac OS computer.

About this document

This document covers the following topics:

- Installing printer files on Mac OS computers
- Setting up printing connections on Mac OS computers
- Printing from Mac OS computers

User software

The User Software DVD provides the following Fiery EXP50 user software.

Adobe PostScript Printer Driver	Allows you to print to the Fiery EXP50 from Mac OS computers. The printer driver also supports Fiery EXP50 and PostScript 3 features.
PostScript Printer Description (PPD/Plugin) file	For use with the PostScript printer driver that allows the Fiery EXP50 to appear in the Print and Page Setup dialog boxes of popular applications. The Fiery EXP50 PPDs provide information about the digital press to your application and printer driver.
PageMaker PPD files	Allow you to print to the Fiery EXP50 from Adobe PageMaker. You must install the appropriate PPD in PageMaker. See the PageMaker documentation for instructions.
PostScript fonts	PostScript screen and printer fonts that correspond to the PostScript printer fonts installed on the Fiery EXP50. You can get a complete list of installed PostScript fonts on the Fiery EXP50 from Command WorkStation.

Downloading printer drivers using WebTools

You can install printer drivers and printer description files from the User Software DVD or directly from the Fiery EXP50 with WebTools.

For more information about setting up and starting WebTools, see *Utilities*.

TO DOWNLOAD PRINTER DRIVERS WITH WEBTOOLS

- 1 Start your Internet or intranet browser and type the DNS name or IP address of the Fiery EXP50.**
- 2 Click the Downloads tab.**
- 3 Click the link for the printer drivers that you want to install (Printer Files for Mac OS X).**

A file named OSX.dmg is downloaded to your desktop. The file contains a folder named Printer Driver in a BinHex-encoded, compressed format. If your Internet browser is equipped with an expander utility, such as StuffIt Expander, the folder decodes and decompresses automatically.

If the Printer Driver folder does not automatically decode and decompress, double-click the file to start the utility that performs that function.

- 4 Install the appropriate printer driver for your operating system.**

For instructions on installing the printer driver for

See

Mac OS X

“Installing Mac OS X printer drivers and printer description files” on page 9

Downloading printer drivers from the Fiery EXP50

You can download printer driver files to your computer directly from the Fiery EXP50 over the network and then install them following the procedures in “[Installing Mac OS X printer drivers and printer description files](#)” on page 9.

TO DOWNLOAD PRINTER DRIVER FILES FROM THE FIERY EXP50

- 1 **Click the Go menu and choose Connect to Server.**
- 2 **Enter SMB:// followed by the name of the Fiery EXP50 or the IP address and click Connect.**
The enabled print connections are displayed along with a folder called Mac_User_SW.
If you cannot locate your Fiery EXP50, contact your network administrator.
- 3 **Open the Mac_User_SW folder.**
- 4 **Open the folder for you operating system and copy the Printer Driver folder to your desktop.**
- 5 **Install the appropriate printer driver for your operating system.**

**For instructions on installing
the printer driver for**

See

Mac OS X

“[Installing Mac OS X printer drivers and printer
description files](#)” on page 9

System requirements

For detailed system requirements, see *Welcome*.

SETTING UP PRINTING ON MAC OS X

To set up the Fiery EXP50 as a PostScript printer on a Mac OS X computer, install the printer driver and the printer description files that correspond to your digital press. The printer driver and printer description files are provided on the User Software DVD or can be downloaded from the Fiery EXP50 over the network or using WebTools. Printer drivers provide a way to communicate information about print jobs between your applications, the Fiery EXP50, and the digital press.

Installing Mac OS X printer drivers and printer description files

The User Software DVD contains the following software for Mac OS X (see the OSX: Printer Driver folder):

- **OSX Installer:** Installs the PostScript Printer Description files (PPDs) and PPD plug-ins required to print from Mac OS X.
- **Language folders:** Printer description files that are installed by OSX Installer. You do not need to open these folders or install them manually on your computer. The appropriate files are installed by OSX Installer.

TO INSTALL THE PRINTER DESCRIPTION FILES FOR MAC OS X

- 1 Quit all open applications.**
- 2 Make sure that the Printer Setup Utility (or Print Center) is not running on your computer.**

Printer Setup Utility (or Print Center) updates the list of available printers when it restarts. If a printer description file is added while Printer Setup Utility (or Print Center) is running, you cannot select the associated printer model until you restart.
- 3 Insert the User Software DVD into the DVD drive.**
- 4 Open the OSX: Printer Driver folder on the User Software DVD.**

If you are installing from the files you downloaded using the Downloads tab in WebTools, browse to the Printer Driver folder on your desktop.

If you are installing from the folder you downloaded from the Fiery EXP50 over the network, browse to the Printer Driver folder on your desktop.

5 Double-click the OSX Installer icon to start installing the printer driver.

NOTE: The PPD files are installed in the following locations:

On an English system: en.lproj under <Startup disk>: Library: Printers: PPDs: Contents: Resources

On a non-English system: de.lproj, es.lproj, fr.lproj, and it.lproj under <Startup disk>: Library: Printers: PPDs: Contents: Resources

If the PPD files are not successfully installed, manually copy the PPD files to the appropriate folder or folders.

6 Follow the on-screen instructions.

The OSX Installer installs the printer driver files that correspond to the Fiery EXP50.

7 When copying is complete, click Quit.

Setting Up the Fiery EXP50 on Mac OS X

After you install the printer driver files on Mac OS X, you must set up the Fiery EXP50 in the Printer Setup Utility (or Print Center). This section describes how to set up the Fiery EXP50.

You must also configure the Fiery EXP50 for the options installed on the digital press to allow the Fiery EXP50 to take advantage of the digital press options. Configure the options manually, or for TCP/IP network connections, use the Two-Way Communication feature to configure the options automatically.

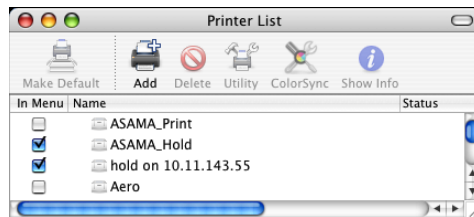
Installable option	Selections
GA Package	Not Installed, Graphic Arts Package, Graphic Arts Package, Premium Edition
Feeder	Not Installed, SFM
Finishing Device Setup	Not Installed, HCS, HCSS, HCS Bypass, HCS - HCS, HCS - HCSS, HCS - HCS Bypass

NOTE: For more information about the print settings that use these options, see *Print Options*.

TO SET UP THE FIERY EXP50 IN THE PRINTER SETUP UTILITY (OR PRINT CENTER)

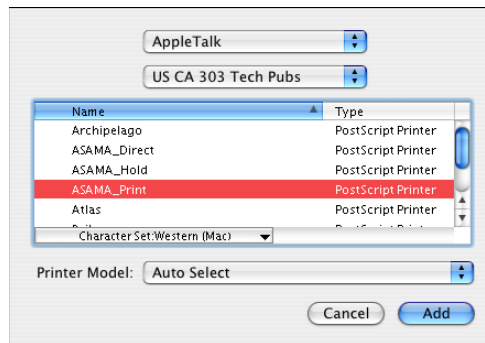
- 1 Choose Applications from the Go menu, open the Utilities folder, and start Printer Setup Utility (or Print Center).

The Printer List dialog box appears.

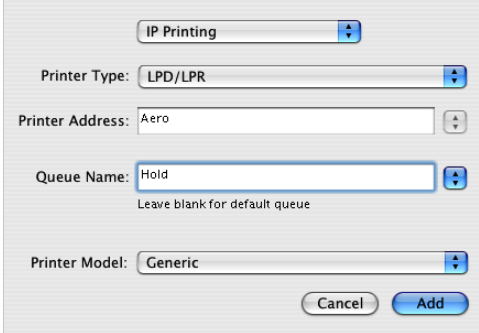


- 2 Click Add.
- 3 Choose AppleTalk or IP printing from the menu that appears.
- 4 For AppleTalk, choose the AppleTalk Zone and choose the name of the Fieri EXP50.

If the zone is not listed as the Default Zone, or one of the Recent Zones, select AppleTalk Network, select the zone, and then click Choose. Proceed to [step 5](#).



For IP Printing, type the IP address or DNS name of the printer in the Printer Address field, and the print connection (Print, Hold, or Direct) in the Queue Name field.



The screenshot shows a printer configuration window with the following fields and options:

- IP Printing** (selected in a dropdown menu)
- Printer Type:** LPD/LPR
- Printer Address:** Aero
- Queue Name:** Hold (with a note: "Leave blank for default queue")
- Printer Model:** Generic

Buttons at the bottom: Cancel and Add.

- 5 For Printer Model, choose the appropriate manufacturer name or model, and then select the file for the Fiery EXP50 PPD.**

If the manufacturer or model is not listed, choose Other and browse to the location of the PPD.

- 6 Click Add.**

The Fiery EXP50 is added to the list of printers.

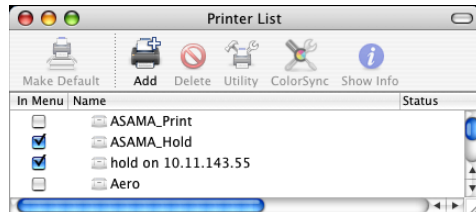
- 7 (Optional) With the Fiery EXP50 selected, choose Printers> Create Desktop Printer. Then specify a name and location for the icon and click Save.**

You can print a file to the Fiery EXP50 by simply clicking and dragging the file to the Fiery EXP50 Desktop Printer icon.

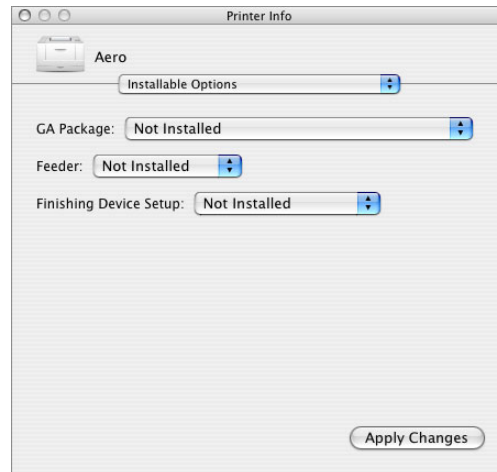
You are now ready to configure installable options for the Fiery EXP50.

To CONFIGURE INSTALLABLE OPTIONS

- 1 Choose Utilities from the Go menu, and start Printer Setup Utility (or Print Center).
- 2 Select your printer in the Printer List.



- 3 Choose Show Info from the Printers menu.
- 4 Choose Installable Options.



- 5 Select the appropriate settings.
- 6 Click Apply Changes.
- 7 Close the window.

PRINTING FROM MAC OS X

Print to the Fiery EXP50 just as you would print to any other printer from a Mac OS X application. Select a printer and print the file from within the application. In addition to this method, you can download files to the Fiery EXP50 using Hot Folders (see [Utilities](#)) or the Print WebTool (see [Utilities](#)), and print documents using Command WorkStation (see [Utilities](#)).

Printing from applications with Mac OS X

Once you install the Fiery EXP50 printer description files using the OSX Installer, you can print directly from most Mac OS X applications. For more information about installing printer description files with the OSX Installer see [page 9](#).

To achieve optimal printing results from specific applications, see [Color Printing](#) and [Fiery Color Reference](#).

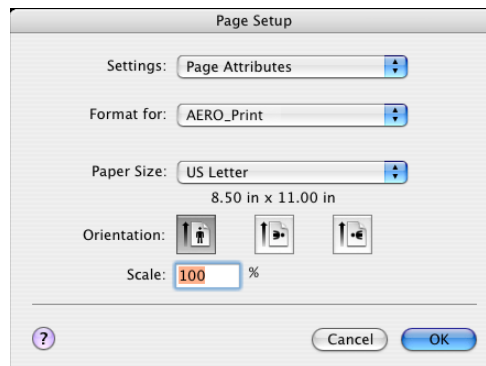
Setting print options and printing from Mac OS X

In Mac OS X applications, print options are set from the Page Setup dialog box and the Print dialog box. For information about specific print options, see [Print Options](#).

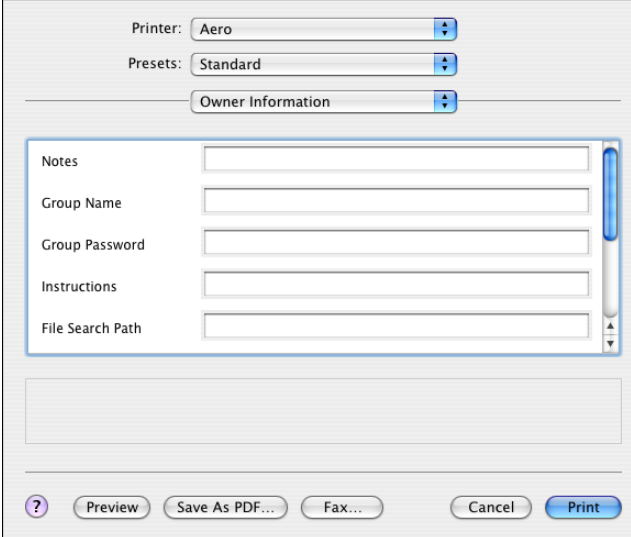
NOTE: Some default print options are set by your administrator during Setup. For information about the current server default settings, contact your administrator or the operator.

TO SET PRINT OPTIONS AND PRINT FROM MAC OS X

- 1 **Open a file and choose Page Setup from the application's File menu.**
- 2 **For Settings, choose Page Attributes. For Format for, choose the Fiery EXP50.**



- 3 Select the Page settings for your print job.
- 4 Click OK.
- 5 Choose Print from the application's File menu.
- 6 Choose the Fiery EXP50 as your printer.
- 7 Choose Owner Information from the drop-down menu.



The screenshot shows a print dialog box with the following elements:

- Printer: Aero (dropdown menu)
- Presets: Standard (dropdown menu)
- Owner Information (dropdown menu)
- Notes: Text input field
- Group Name: Text input field
- Group Password: Text input field
- Instructions: Text input field
- File Search Path: Text input field
- Buttons: ? (help), Preview, Save As PDF..., Fax..., Cancel, Print

Type user and job identification information for managing purposes, or whatever information is required at your site.

8 Type information in the Notes field.

The information you type in the Notes field can be viewed and edited by the operator in Command WorkStation and also appears in the Job Log.

9 Type an account name in the Group Name field.

The Group Name appears in the Job Log. The account name is defined by your administrator for managing purposes. Consult your administrator for the account name.

10 Type a password in the Group Password field.

The Group Password appears in the Job Log, but it is encrypted. The password is defined by your administrator for managing purposes. Consult your administrator for the password.

When the account name and password you entered match those defined by the administrator, your job is printed. Otherwise, an error is generated, and your job is placed in the Printed queue with an error indication.

The administrator or operator can edit the Group Name and Group Password from the Command WorkStation Properties dialog box.

For more information about Command WorkStation, see *Utilities*.

NOTE: Group Name and Group Password options are not available when printing to the Direct connection.

11 Type instructions to the operator about the job in the Instructions field.

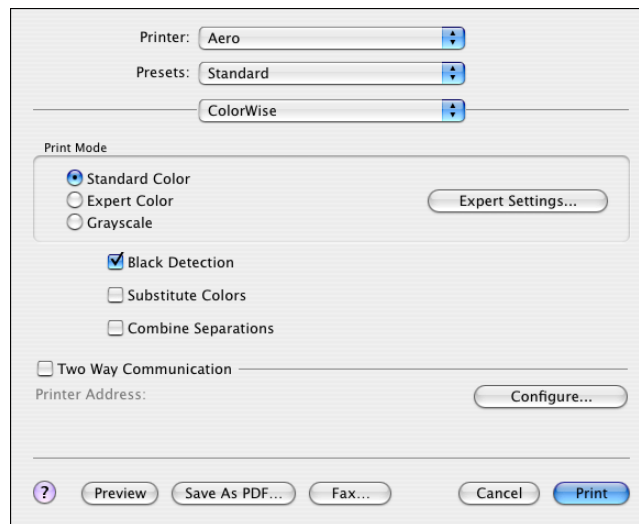
These instructions can be displayed in Command WorkStation, but do not appear in the Job Log. These instructions *can* be edited by the operator.

12 Type values for the other fields as needed.

For information about these fields, see *Print Options*.

13 Choose ColorWise from the drop-down menu.

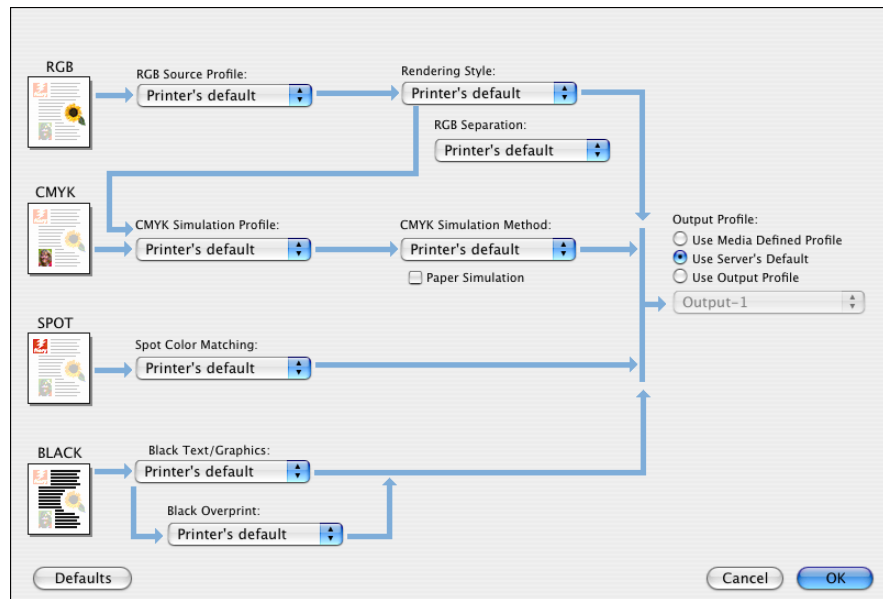
14 Specify color print options for the job.



15 To use advanced color management features, such as Rendering Style, click Expert Settings.

The Expert Color Settings dialog box appears.

NOTE: To display the ColorWise settings from the Fiery EXP50 in this dialog box, make sure that Two-Way Communication is enabled. To enable Two-Way Communication, see [page 21](#).

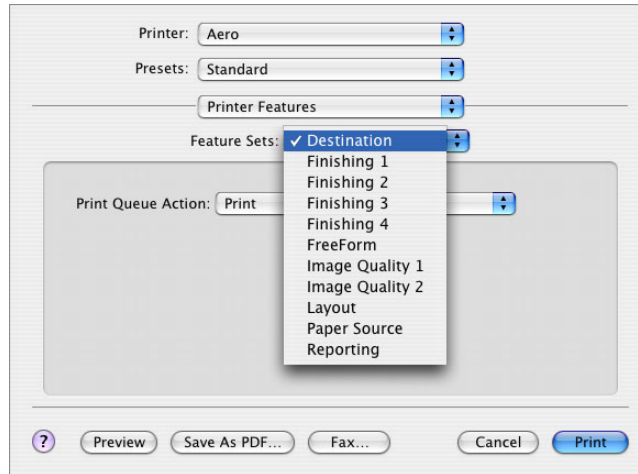


If you want to set the Output Profile option to Use Media Defined Profile, you must first make sure Two-Way Communication is not enabled. You can then select Use Media Defined Profile from the drop-down list for Output Profile. Enable Two-Way Communication if you want to be able to select specific downloaded output profiles.

- 16 Specify the color settings for the print job and click **OK**.
- 17 To shift the position of the print image on the page, choose **Image Shift** from the drop-down menu and specify the shift distances.

You might need to shift the print image to allow for binding, for example.

- 18 Choose Printer Features to specify printer-specific options. Specify settings for each selection in the Feature Sets menu.**



These print options are specific to the Fiery EXP50 and the digital press. You must choose each Feature Set to see all the options. These options override settings in Fiery EXP50 Printer Setup, but can be changed from Command WorkStation.

If you choose Printer's default, the job prints according to the settings specified in Setup.

For more information about these options and overrides, see [Print Options](#).

Some print options that are selectable from an application are similar to the print options that are specific to the Fiery EXP50 and the digital press. In these cases, use the print options specific to the Fiery EXP50 and the digital press that appear in the Printer Features menu. The application may not set up the file properly for printing on the Fiery EXP50, resulting in unexpected printing errors and longer processing time.

If you select an invalid setting or combination of settings when printing a document, no error message appears. For example, you may be able to select duplex printing on transparency media. Invalid settings and combinations are ignored by the Fiery EXP50.

- 19 Click Print.**

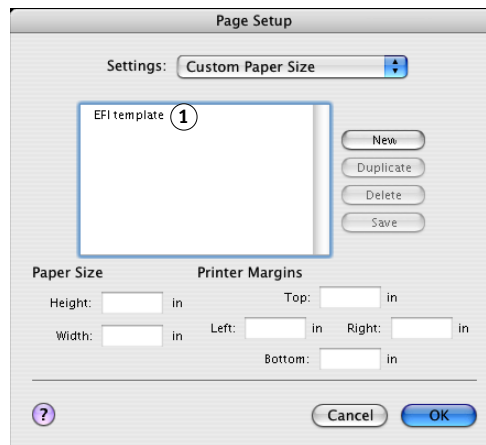
Defining custom page sizes from Mac OS X

With custom page sizes, you define page dimensions and margins. After you define a custom page size, you can use it from within an application without redefining it each time you print.

TO DEFINE A CUSTOM PAGE SIZE

- 1 Choose Page Setup from the application's File menu.
- 2 Choose Custom Paper Size from the Settings menu.

1 Custom page names



- 3 Click New and type a name for the custom page size.
- 4 Enter the page dimensions and margins.
- 5 Click Save.
- 6 Click OK to exit.

The custom page size you defined is added to the list of Paper Size selections in the Page Setup dialog box.

TO EDIT A SAVED CUSTOM PAGE SIZE

- 1 Choose Page Setup from the application's File menu.
- 2 Choose Custom Paper Size from the Settings menu.
- 3 Select the Custom Page Size name.
- 4 Edit the page dimensions and margins.
- 5 Replace the existing Custom Page name by clicking it.
- 6 Click Save.
- 7 Click OK to exit.

TO DELETE A CUSTOM PAGE SIZE

- 1 Choose Page Setup from the application's File menu.
- 2 Choose Custom Paper Size from the Settings menu.
- 3 Click the Custom Paper Size name.
- 4 Click Delete.
- 5 Click OK to exit.

TO MAKE A COPY OF THE CUSTOM PAGE SIZE

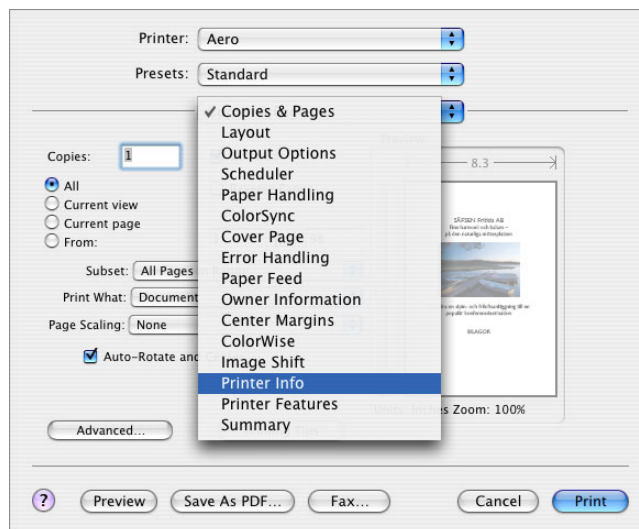
- 1 Choose Page Setup from the application's File menu.
- 2 Choose Custom Paper Size from the Settings menu.
- 3 Click the Custom Paper Size name.
- 4 Click Duplicate.
- 5 Click OK to exit.

Enabling Two-Way Communication

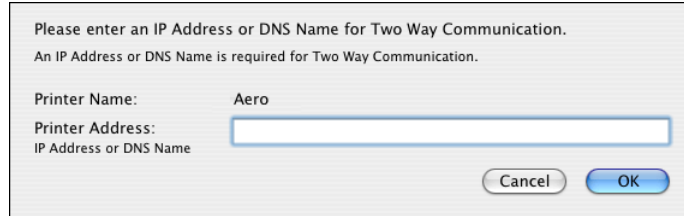
If you enabled a TCP/IP network, you can retrieve digital press status and ColorWise settings from the Fiery EXP50 and display them in the printer driver using the Two-Way Communication feature. The digital press status includes the current paper and toner levels. The ColorWise settings can be set on the Fiery EXP50 using ColorWise Pro Tools. For more information about ColorWise print options, see *Color Printing*.

TO ENABLE TWO-WAY COMMUNICATION

- 1 Open a file and choose Print from the application's File menu.
- 2 Choose the Fiery EXP50 as your printer.
- 3 Choose Printer Info, or select ColorWise and select the Two-Way Communication option.

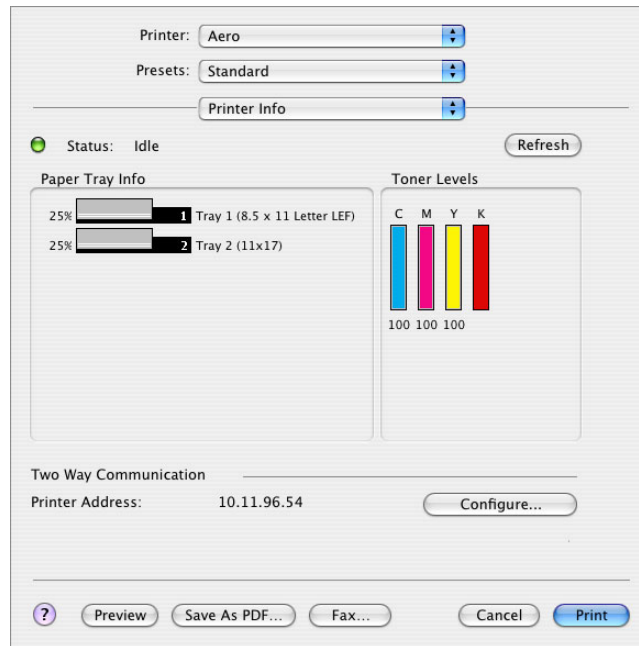


A dialog box appears requesting an IP address or DNS name.



NOTE: If the dialog box does not appear automatically, click Configure.

- 4 Type the Fiery EXP50 IP address or DNS name in the dialog box.
- 5 Click OK.
- 6 To update the digital press status in the Printer Info window, click Refresh.



INDEX

A

AppleTalk connection, in Printer Setup Utility (Print Center) 11

C

ColorWise 16
ColorWise options
 updating automatically 21
Command WorkStation 14, 15
custom page size
 defining for Mac OS X 19

D

default print options 14
digital press status 21
Downloads tab in WebTools 7

E

Expert Color Settings 16

F

Feature Sets 18
Feeder option 10
Finishing Device Setup 10

G

GA Package 10
Group Name 15
Group Password 15

H

Hot Folders 14

I

installable options
 specifying in Mac OS X 13
installing
 printer driver for Mac OS X 9
 printer drivers from server 8
Instructions field 16
IP Printing, in Printer Setup Utility (Print Center) 12

M

Mac OS X
 PPD 14
 print options 14
 printer driver installation 9
 printer driver setup 10

N

Notes field 15

O

OSX Installer 10, 14
Owner Information 15

P

Page Setup dialog box 14
PostScript fonts 6
PostScript Printer Description file, *see* PPD
PPD
 Mac OS X 10, 14
 overview 6
Print Center 9, 10
Print dialog box 14
print options
 Mac OS X 14
Print tab in WebTools 14
printer driver
 downloading 7
 installation, Mac OS X 9
 setup, Mac OS X 10
Printer Features 18
Printer Setup Utility 9, 10
Printer's default 18

T

Two-Way Communication 21

W

WebTools
 Downloads tab 7
 Print tab 14

