

# System Updates

## User Addendum

System Updates is a print server service that keeps the system software on your print server up-to-date with the latest Microsoft security updates. It runs in the background on the print server and automatically checks for updates by contacting an update server periodically (every 24 hours by default) through the Internet. If one or more updates are available, System Updates alerts you to download and install the updates, or downloads and installs updates automatically without any user interaction. You can turn off automatic checking and use System Updates to check for and install updates manually at any time.

System Updates runs on print servers running Microsoft Windows XPe.

### Installing the System Updates utility

If the System Updates utility is not already installed as part of your system software, install it by downloading the System Updates patch file to the print server. The patch file is named 1-H2301.ps.

---

#### TO INSTALL THE SYSTEM UPDATES UTILITY

- 1. Log into the print server as an administrator using the Fiery Advanced Controller Interface (FACI), if available, or Remote Desktop, or log in as an administrator on a remote computer that has Command WorkStation® installed and can access the print server.**
- 2. Start Command WorkStation.**
- 3. Choose File>Import>Job.**
- 4. Browse to the location of the System Updates patch file, double-click the file, and then select the Direct connection as the logical printer.**
- 5. Click Import.**

The file is downloaded to the Direct connection and processed as a print job, but no output is printed.
- 6. Reboot the print server.**
- 7. Print a Configuration page and verify that the Update Information section includes the name of the System Updates patch.**

## Configuring the System Updates utility

To configure System Updates, you can specify proxy server settings and select which method of automatic checking to use (if any).

Configure System Updates from the FACI (if available) or Remote Desktop, or from a web browser locally or remotely.

### Configuring proxy settings from the FACI or Remote Desktop

If your print server connects to the Internet through a proxy server, you must specify the information needed to access the proxy server. If not, System Updates uses the Internet Explorer network settings.

**NOTE:** System Updates uses the SOAP protocol and port 80 to connect to the Internet.

---

#### TO SPECIFY PROXY SETTINGS IN SYSTEM UPDATES FROM THE FACI OR REMOTE DESKTOP

1. **From the Start menu, choose Programs>Fiery>System Updates.**

The System Updates Preferences dialog box appears.

**NOTE:** You can also access this dialog box by clicking the System Updates icon in the Windows taskbar and choosing Preferences. This icon is visible only when new updates are available for installation or when automatic checking for updates is disabled.

2. **Click Proxy Settings.**

The System Updates Proxy Settings dialog box appears.



3. **Select Use Proxy and type the IP address of the proxy server.**
4. **If the proxy server does not use the default port, type the port number to use.**
5. **If a user name and password are required to access the proxy server, type your user name and password.**
6. **Click OK, and then click OK again.**

### Configuring automatic checking from the FACI or Remote Desktop

You can configure System Updates to check for updates in several ways:

- **Notify when updates are available:** When updates are available, a pop-up message appears next to the System Updates icon in the Windows taskbar on the FACI (or Remote Desktop). Clicking the pop-up opens the System Updates window. This option requires that you download and install the updates manually.

- **Download the updates automatically and notify (faster installation):** When updates are available, a pop-up message appears next to the System Updates icon in the Windows taskbar on the FACI (or Remote Desktop). The updates are downloaded automatically but not installed. Clicking the pop-up opens the System Updates window. This option requires that you install the updates manually.
- **Automatically download and install updates, and reboot system:** Updates are downloaded and installed automatically. System Updates checks for available updates at a time and day you specify, downloads and installs them, and reboots or restarts the server if any of the updates requires a reboot or restart. No notification is displayed and no user action is required.

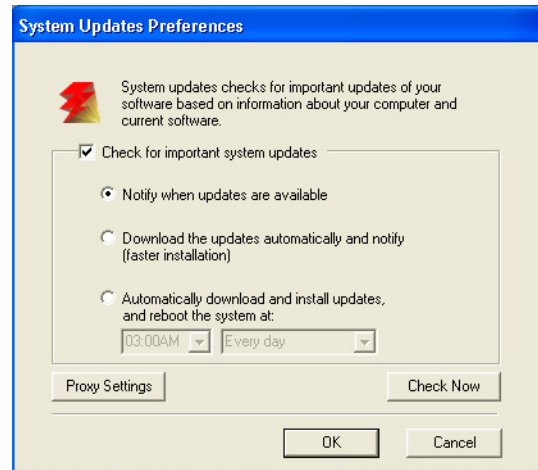
**NOTE:** If your print server and copier/printer are required to reboot in a specific order, we recommend that you do not choose the automatic installation.

---

#### TO CONFIGURE SYSTEM UPDATES TO CHECK FOR UPDATES FROM THE FACI OR REMOTE DESKTOP

1. **From the System Updates utility, click Start and choose Programs>Fiery>System Updates.**

The System Updates Preferences dialog appears.



2. **Select Check for Important System Updates.**
3. **Select the option that describes how you want System Updates to respond when new updates are available.**
4. **If you select Automatically download and install updates, choose a time of day and a day of the week or Every Day from the menus.**
5. **Click OK.**

## Configuring System Updates from a web browser

To configure System Updates, specify proxy server settings and select which method of automatic checking to use (if any).

### TO SPECIFY PROXY SETTINGS AND CONFIGURE CHECKING FOR UPDATES THROUGH A WEB BROWSER

1. **On the FACI: Go to <http://localhost/systemupdates.htm>.  
On a remote system: Go to [http://<print server\\_IP\\_address>/systemupdates.htm](http://<print server_IP_address>/systemupdates.htm).**

The System Updates Preferences web page appears.

2. **Select Check for important system updates.**
3. **Select the option that describes how you want System Updates to respond when new updates are available.**  
For more information about the options, see page 2.
4. **If you select Automatically download and install updates, choose a time of day and day of the week or Every Day from the menus.**
5. **Select Use Proxy.**
6. **Type the IP address of the proxy server.**
7. **If the proxy server does not use the default port, type the port number to use.**
8. **If a user name and password are required to access the proxy server, type your user name and password.**
9. **Type the print server administrator password.**  
You must log in with administrator privileges to configure System Updates.
10. **Click Update Configuration.**

## Checking for updates manually and installing new updates

Instead of (or in addition to) having System Updates check for updates automatically, you can also use System Updates to check for updates manually from the FACI (if available) or Remote Desktop.

Whether you check for updates automatically or manually, you can install new updates from the FACI or Remote Desktop.

### Checking for updates manually from the FACI or Remote Desktop

When automatic checking for updates is disabled, you can access the System Updates through the System Updates icon in the Windows taskbar. This icon is also visible when new updates are available for installation.

---

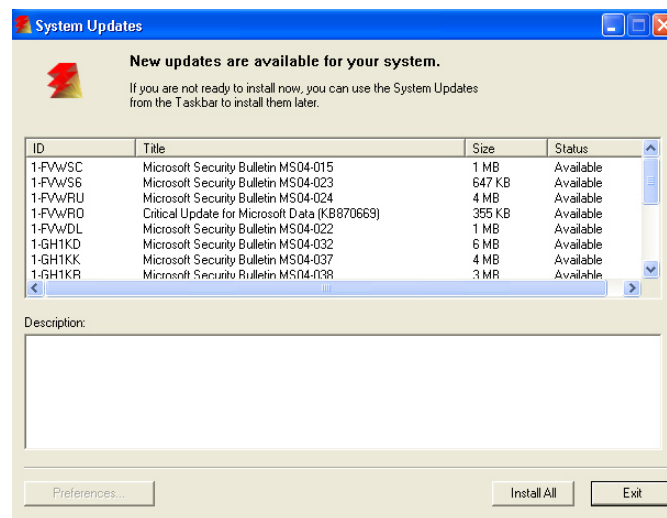
#### TO CHECK FOR UPDATES MANUALLY FROM THE FACI OR REMOTE DESKTOP

- **Click the System Updates icon and choose Check System Updates.**
- or
- **Click the System Updates icon, choose Preferences, and then click Check Now.**

If new updates are available, the System Updates window appears, listing the new updates. If no updates are available, a message indicates that your system is up-to-date.

### Installing new updates from the FACI or Remote Desktop

Install new updates in the System Updates window. This window appears when you click the pop-up message that tells you when new updates are available. It also appears if you check for updates manually.



To view a description of an update in the System Updates window, click to select the update in the list.

If you do not want to install new updates immediately, click Exit to close the window.

To reopen the window, click the System Updates icon and choose Check System Updates.

---

**TO INSTALL NEW UPDATES FROM THE FACI OR REMOTE DESKTOP**

1. **Turn off the copier/printer before you install updates.**
2. **Click Install All.**

The updates are downloaded (if they have not already been downloaded) and installed.

3. **If the updates require a server restart or a reboot, the print server is automatically restarted or rebooted when installation is complete.**

There is a one-minute delay before a reboot.

4. **When the print server reaches the Idle state, turn on the copier/printer.**

**Checking the System Updates version number**

You can check the version number of the System Updates installed on the print server.

---

**TO CHECK THE SYSTEM UPDATES VERSION NUMBER**

1. **Log into the print server as an administrator using the FACI (if available) or Remote Desktop.**
2. **Open the folder D:\sysupdates.**
3. **Right-click the file systemupdates.exe, choose Properties, and then click the Version tab.**