



Fiery® EXP8000/50 Color Server



**Welcome**

© 2007 Electronics for Imaging, Inc. The information in this publication is covered under *Legal Notices* for this product.

45059231  
09 February 2007





## WELCOME

This *Welcome* document provides system requirements and an overview of how to set up the Fiery EXP8000/50 Color Server so that you can begin printing. It describes the initial tasks you must perform and points you to sections in the user documentation where the procedures are described in detail. This document also provides a description of the user documents on the User Documentation CD and instructions on printing them.

This document assumes that you have already installed the digital press components. Details about the digital press, the network, remote computers, software applications, and Microsoft Windows are beyond the scope of this document.

### Terminology and conventions

This document uses the following terminology and conventions.

Term or convention	Refers to
Aero	Fiery EXP8000/50 (in illustrations and examples)
Digital press	DocuColor 8000/7000/5000 digital press
Fiery EXP8000/50	Fiery EXP8000/50 Color Server
Mac OS	Apple Mac OS X
Titles in <i>italics</i>	Other documents in this set
Windows	Windows 2000, Windows XP, Windows Server 2003
	Topics for which additional information is available by starting Help in the software
	Tips and information
	Important information
	Important information about issues that can result in physical harm to you or others

## About the documentation

This document is part of a set provided to users and system administrators of Fiery EXP8000/50. The documents are on the User Documentation CD and are in PDF (Portable Document Format). These files can be viewed online or printed using Adobe Reader. When viewed online, these files contain links and cross-references that allow you to quickly and easily locate needed information. Use the most recent version of Reader to take advantage of advanced search capabilities. For more information, see [“Installing and using Adobe Reader”](#) on page 15.

The following comprise the documentation set for your Fiery EXP8000/50:

- *Print Server Setup Roadmap* provides a graphical overview of the minimum setup requirements to have the Fiery EXP8000/50 function on your network.
- *Welcome* provides an introduction to the Fiery EXP8000/50 and the user documentation.
- *Configuration and Setup* explains configuration and administration of the Fiery EXP8000/50 for the supported platforms and network environments. It also includes guidelines for providing printing services to users.
- *Printing from Windows* and *Printing from Mac OS* describe how to install the printer drivers on Windows and Mac OS computers, establish printing connections for different networks, and begin printing from users' computers. Each document also describes the installation and use of print-related utilities, such as Job Monitor and Printer Delete Utility.
- *Print Options* provides information about print options for the Fiery EXP8000/50. This document describes print options and features that you access from the printer driver, and Command WorkStation job overrides.
- *Utilities* describes how to scan and how to install, configure, and use the software utilities included on the User Software DVD.
- *Color Printing* explains how to manage color output on the Fiery EXP8000/50. This document provides information about ColorWise Pro Tools, including how to calibrate the Fiery EXP8000/50 and set ColorWise print options from Windows and Mac OS computers.
- *Graphic Arts Package* addresses the specific needs and requirements of graphic arts professionals and commercial print shops.
- *Fiery Color Reference* provides an overview of color management concepts and workflows, and describes how to manage color from various applications.

- *Workflow Examples* explains complicated printing scenarios and provides cross-references to relevant information in the documentation set.
- *Variable Data Printing* supplements the information in *Workflow Examples* with reference information about variable data printing (VDP). This document provides an overview of FreeForm and explains where to set FreeForm options.
- *Glossary* provides definitions for popular color concepts, printing applications, and printing terms used in the documentation set.
- *Customer Release Notes* provide last-minute product information and workarounds for some of the problems you may encounter.

## BASIC STEPS TO PRINT

The following section includes a basic workflow for setting up your Fiery EXP8000/50 in order to print documents. It takes you from printing a Configuration page and configuring Setup to installing printer drivers to print a job. Detailed instructions for all of these procedures are in other documents in the documentation set. For a summary of supported Fiery EXP8000/50 documents, see [page 4](#).

These instructions assume that a service technician has unpacked and connected the Fiery EXP8000/50 and that the Fiery EXP8000/50 and digital press are powered on. In some cases, initial print device settings may be required. See *Configuration and Setup*.

The following steps assume that you are adding the Fiery EXP8000/50 to a TCP/IP network that includes Windows XP user computers. Although this example is specific to a Windows XP TCP/IP environment, users in other computer environments may also benefit from these instructions.

## STEP 1

### Print a Configuration page from Command WorkStation

Print the Configuration page and note the Fiery EXP8000/50 name and IP address. When you perform Fiery EXP8000/50 Setup and install the printer driver, you will need to reference this information.

- 1 In Command WorkStation, choose **Print Pages from the Server** menu.
- 2 Click **Configuration**.
- 3 Click **Print**.



- 4 Review the default Fiery EXP8000/50 settings on the printed Configuration page and determine if they are compatible with your network environment.

If you change these settings, print another Configuration page to verify the changes.

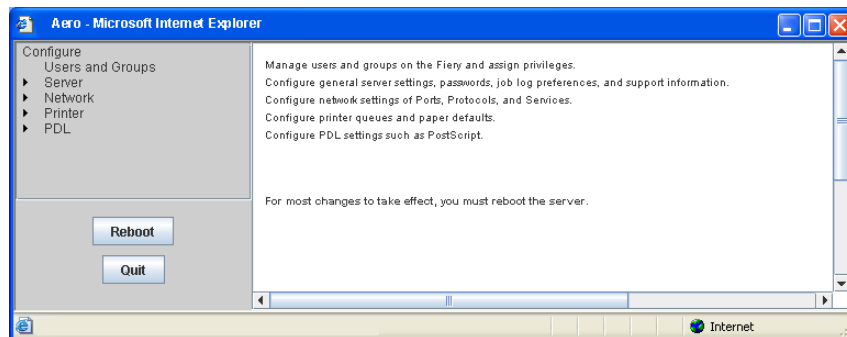
## STEP 2

### Set up the Fiery EXP8000/50 at the Fiery Advanced Controller Interface

**1 Access local Fiery EXP8000/50 Setup in any of the following ways:**

- Start your Internet browser, type the Fiery EXP8000/50 IP address, click the Configure tab, click Launch Configure, and log on with Administrator privileges.
- Start Command WorkStation, Windows Edition, log on with Administrator privileges, and choose Setup from the Server menu.

The Setup window appears.



**2 Perform Server, Network, and Printer Setup, in that order.**

If your network uses DHCP, the Fiery EXP8000/50 acquires the IP address automatically. Otherwise, type the Fiery EXP8000/50 IP address.

**3 Double-click Password.**

Set an Administrator password to protect your Setup from unauthorized changes.

**4 Enter and confirm the password.**

**5 Click Save.**

Print a Configuration page to confirm changes to Setup. (See [Step 1.](#))

For information about setting up the Fiery EXP8000/50 on a different network, see [Configuration and Setup.](#)

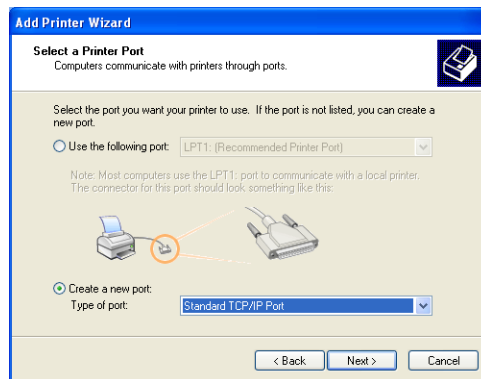


## STEP 3

### Install printer drivers on user computers for TCP/IP printing

From a user's Windows XP computer:

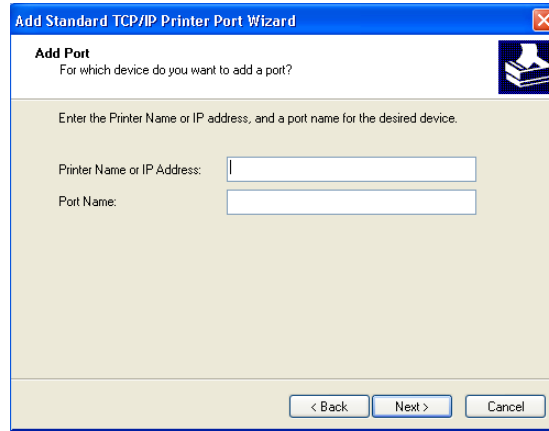
- 1 Click Start and choose Printer and Faxes.
- 2 Click Next.
- 3 Select "Local printer attached to this computer" and click Next.
- 4 Select Create a new port, choose Standard TCP/IP Port, and then click Next.



The Add Standard TCP/IP Printer Port Wizard dialog box appears.

- 5 Click Next.

- 6 Type the IP address or the Fiery EXP8000/50 DNS name and click Next.



- 7 Click Finish.
- 8 Click Have Disk in the dialog box displaying a list of manufacturers and printers.
- 9 Insert the User Software DVD and browse to the English\Prntdrv\Ps\_drvr\Win\_2K\_XP folder.  
Make sure that Oemsetup.inf or Oemsetup is selected, click Open, and then click OK.
- 10 Select the Fiery EXP8000/50 printer driver as your printer and click Next.
- 11 Type a name for the Fiery EXP8000/50 in the Printer name field, indicate whether you want to make it the default printer, and then click Next.
- 12 Follow the on-screen instructions. When asked whether to print a Test Page, select No.

The necessary files are installed on your hard disk drive. When installation is complete, the Printers window appears with an icon for the newly installed printer.

For more information about installing Windows printer drivers, see *Printing from Windows*.

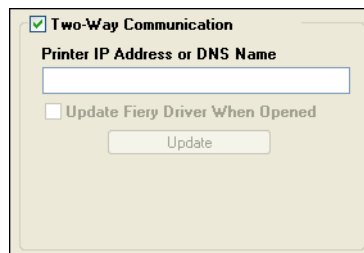
For information about installing Mac OS printer drivers, see *Printing from Mac OS*.

## STEP 4

### Update the printer driver to include Fiery EXP8000/50 options

From a user's Windows XP computer:

- 1 Click Start and choose Printers and Faxes.
- 2 In the Printers window, select the Fiery EXP8000/50 printer driver icon.
- 3 Choose Properties from the File menu.
- 4 Click the Configuration tab.
- 5 Select Two-Way Communication.



- 6 Type the Fiery EXP8000/50 IP address or DNS name.
- 7 Select Update Fiery Driver When Opened to display the printer's current default settings when the printer driver is opened.
- 8 Click Update.

Options such as finishing units that are installed on the Fiery EXP8000/50 are displayed in the printer driver and are available the next time you print a job.

- 9 Click OK.

For more information about updating Windows printer drivers, see *Printing from Windows*.

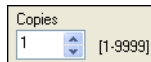
For information about updating Mac OS printer drivers, see *Printing from Mac OS*.

## STEP 5

### Print a job

From a user's Windows XP computer:

- 1 From your application, choose **Print** from the **File** menu.
- 2 Select the **Fiery EXP8000/50** printer driver and click **Properties**.
- 3 Specify **Fiery EXP8000/50** job options, such as **Copies** and finishing options, and then click **OK**.



- 4 Click **OK** again.

For information about printing jobs from a Windows computer, see *Printing from Windows*.

For information about printing jobs from a Mac OS computer, see *Printing from Mac OS*.



After completing the basic steps to print, you may want to explore these additional topics, depending on your printing environment, for example:



Creating secure user groups and assigning user passwords (see *Configure Help*).

Managing and editing jobs submitted to the Fiery EXP8000/50 using utilities, such as *Command WorkStation* and *ColorWise Pro Tools* (see *Utilities* and *Color Printing*).

Calibrating your digital press to simulate a different printing environment or optimize color output (see *Color Printing*).

## Installing user documentation

You can install user documentation directly from the User Documentation CD. In addition, if the user documentation was installed on the Fiery EXP8000/50 and shared, you can install user documentation over the network.

**NOTE:** You can view user documentation from the CD or copy the language folder that you want to your desktop. If you copy the files to your computer, keep all the files in the language folder. Do not rename the files. The cross-reference links will not work properly.

---

### TO INSTALL USER DOCUMENTATION ON A CLIENT COMPUTER FROM THE USER DOCUMENTATION CD

**1 Insert the User Documentation CD into the CD-ROM drive.**

The contents of the CD are displayed.

**NOTE:** On Mac OS X, you must click the disk icon to display the contents of the CD.

**2 Browse to the language folder that you want to access.**

You can copy the documents that you want to your hard disk or, if there is an Acrobat link in the folder, click the Acrobat link to download the documentation from the Internet.

**NOTE:** If Acrobat Reader is not installed, you must open the Acrobat Reader folder and install the version required for your operating system (Windows or Mac OS). See “[Installing and using Adobe Reader](#)” on page 15.

---

### TO INSTALL USER DOCUMENTATION ON A WINDOWS CLIENT OVER THE NETWORK

**1 Browse for the Fiery EXP8000/50 over the network, using the IP address or the DNS server name.**

**2 Type the user name and password, if required.**

Consult your network administrator to see if this is required.

**3 Browse to the User\_Docs folder.**

**4 Browse to the language folder that you want.**

**5 Copy the folder to your hard disk.**

If there is an Acrobat link in the folder, click the Acrobat link to download the documentation from the Internet.

**NOTE:** If Acrobat Reader is not installed, you must open the Acrobat Reader folder and install the version required for your operating system (Windows or Mac OS). See “[Installing and using Adobe Reader](#)” on page 15.

---

**TO INSTALL USER DOCUMENTATION ON A MAC OS X CLIENT OVER THE NETWORK**

- 1 Choose Connect to Server from the Go menu.**
- 2 Type smb:// followed by the IP address of the Fiery EXP8000/50, and then click Connect.**

If you cannot locate the Fiery EXP8000/50, contact your network administrator.

- 3 Type the user name and password, if required.**

Contact your network administrator to see if this is required.

- 4 Browse to the User\_Docs folder.**
- 5 Browse to the language folder that you want.**

- 6 Copy the folder to your hard disk.**

If there is an Acrobat link in the folder, click the Acrobat link to download the documentation from the Internet.

**NOTE:** If Acrobat Reader is not installed, you must open the Acrobat Reader folder and install the version required for your operating system (Windows or Mac OS).

See “[Installing and using Adobe Reader](#)” on page 15.

## About Help



Most of the user software, utilities, and printer drivers contain Help that is accessible from Help buttons or the main toolbar menus. Help provides detailed procedures on using the application and, in some cases, provides additional detail. The documentation refers you to Help for more information, as appropriate.

### Installing and using Adobe Reader

For your convenience, the current version of Adobe Reader for Windows and Mac OS X is included on the User Documentation CD. This version features enhanced capabilities for full rules-based search across the entire documentation set. We strongly suggest that you install this version of Reader to take advantage of these capabilities, unless you have installed the equivalent version of Adobe Acrobat.

---

#### TO INSTALL ADOBE READER

- 1 **Insert the User Documentation CD into the CD-ROM drive of your computer.**
- 2 **Double-click the CD icon.**
- 3 **Open the Adobe Reader folder.**
- 4 **Open the folder for your platform and double-click the installer file within (.exe for Windows, .dmg for Mac OS X).**
- 5 **Follow the on-screen installation instructions.**

#### Using Adobe Reader

View or print the PDF files provided on the User Documentation CD using Adobe Reader (or Acrobat). After you install Reader, double-click a PDF icon to open the file.

Note specifically the advanced search capability of the version of Reader that is provided on the User Documentation CD. You can search for a word or phrase across the Fiery EXP8000/50 documentation set by examining all the documents within a specific language folder on the User Documentation CD. For information about using this and other features of Reader, see the Help that accompanies the application.

**NOTE:** You can view the documentation from the CD or copy the language folder to your desktop. If you copy the files to your computer, keep all the files in the language folder and do not rename the files, or the cross-reference links will not work properly.

## System requirements for user computers

To install the Fiery EXP8000/50 user software on a Windows or Mac OS computer, the computer must be equipped with a built-in or external DVD-ROM or CD-ROM drive. The following table lists the minimum system requirements.

Minimum requirements for	Windows 2000/XP/Server 2003	Mac OS
Operating system	Windows 2000 with Service Pack 4 Windows XP (recommended with Service Pack 2) Windows Server 2003 Standard Edition, Enterprise Edition, or Datacenter Edition (any of these must be the 32-bit version)	Mac OS X v10.4.x
Memory for printing and utilities (Job Monitor)	256MB of RAM for printing and to operate utilities (512 recommended)	
Networking protocol	TCP/IP	TCP/IP
Networking protocol for Fiery utilities	TCP/IP	TCP/IP (EtherTalk supported)
WebTools	<p>Java-enabled web browser:</p> <ul style="list-style-type: none"> <li>• Internet Explorer v6.0 with SP1 (Windows)</li> <li>• Mozilla Firefox 1.0 or later</li> <li>• Safari v1.2 or later</li> </ul> <p><b>NOTE:</b> Portions of WebTools require Java JVM v1.4.2 or later browser support.</p> <p><b>NOTE:</b> Microsoft releases updates to Internet Explorer. Because support cannot be guaranteed for all versions, use the versions specified for best results.</p> <p>A monitor and video memory that supports 16-bit color at a minimum resolution of 800x600</p> <p>A TCP/IP-enabled network and the IP address or DNS name of the Fiery EXP8000/50</p> <p>Web Services enabled on the Fiery EXP8000/50</p>	



Minimum requirements for	Windows 2000/XP/Server 2003	Mac OS
Command WorkStation	Windows-based computer with a 1.0GHz or greater Pentium processor	Mac OS X v10.4.x 333MHz or greater Macintosh G3
	200MB available hard disk space for installation	80MB available hard disk space for installation  1GB is recommended for writing full previews of raster files and handling large PS or PDF files.
	256MB of RAM	
	A monitor that supports 16-bit color at a minimum resolution of 1024x768 Video adapter card with 2MB of video memory TCP/IP networking protocol installed	
	48x CD-ROM drive	
Impose on Command WorkStation (Windows only)	In addition to requirements for Command WorkStation: <ul style="list-style-type: none"> <li>• Windows-based computer with 333MHz Pentium processor</li> <li>• Dongle to be installed on USB port for every client workstation</li> <li>• Acrobat/PitStop CD</li> </ul> <b>NOTE:</b> Impose is supported on Windows 2000/XP.	

#### Other network requirements

---

UNIX (TCP/IP) workstation	Standard TCP/IP connectivity TCP/IP printing software that conforms to RFC1179 (Berkeley lpd protocol) Sun OS 4.1.3 or later Red Hat Linux 9 or later Turbolinux 7 Solaris 9 or later
---------------------------	--

---

## Shutting down and rebooting the Fiery EXP8000/50

You may have to shut down the Fiery EXP8000/50 for service. When you do, network access to the digital press is interrupted. Before you remove or attach any cables to the Fiery EXP8000/50 to perform service, shut down the Fiery EXP8000/50.

If necessary, you can restart the Fiery EXP8000/50. Restarting the Fiery EXP8000/50 from FieryBar resets the Fiery EXP8000/50 system software without restarting the system entirely. Rebooting the Fiery EXP8000/50 from the Windows Start menu restarts the system entirely.

---

### To SHUT DOWN THE FIERY EXP8000/50

**1 Make sure that the Fiery EXP8000/50 is not receiving, processing, or printing any files.**

Wait until no processing or printing jobs appear in the Command WorkStation Active Jobs window, or FieryBar indicates Idle in the RIPping and Printing areas.

If the system has just finished processing, wait at least five seconds after the system reaches Idle before beginning the shutdown procedure.

**NOTE:** Before you remove the Fiery EXP8000/50 from the network, notify the network administrator.

**2 Shut down and turn off the digital press.**

For instructions, see the documentation that accompanies your digital press.

**3 Close all open applications except FieryBar.**

**4 Choose Shut Down from the Windows Start menu.**

**5 Select Shut Down and click OK.**

Before you access internal components, make sure that all cables are disconnected from the back of the Fiery EXP8000/50.

---

**TO RESTART THE FIERY EXP8000/50**

- 1 Make sure that the Fiery EXP8000/50 is not receiving, processing, or printing any files.**

Wait until no processing or printing jobs appear in the Command WorkStation Active Jobs window, or FieryBar indicates Idle in the RIPping and Printing areas.

- 2 Shut down and turn off the digital press.**

For instructions, see the documentation that accompanies your digital press.

- 3 Close all open applications except FieryBar.**

- 4 Right-click FieryBar and choose Restart Fiery from the menu that appears.**

A confirmation message appears.

- 5 Click OK.**

Wait for the Fiery EXP8000/50 server software to shut down and restart. You may have to wait one minute or more. FieryBar displays an Exited status while the server is restarting.

- 6 Turn on the digital press.**

For instructions, see the documentation that accompanies your digital press.

## Safety warnings



The Fiery EXP8000/50 display window is a liquid crystal display (LCD) that is made of glass and can break. Do not subject it to strong shocks.



If the display window breaks and the liquid crystal material leaks out, do not inhale, ingest, or touch it. If the material gets on your skin or clothing, wash it off with soap and water immediately.



Do not apply excessive pressure to the panel. This changes the color of the panel.



Fiery EXP8000/50 batteries may contain perchlorate material.

**NOTE:** This is applicable in California, USA only.

Dispose of used batteries according to the manufacturer's instructions.

## Cleaning the Fiery EXP8000/50 display window

Clean the Fiery EXP8000/50 display window with a soft cloth moistened with isopropyl alcohol or ethyl alcohol. Never use water or ketone, as these may permanently alter the display.