

Fig. 1
Obtain IP address of the DC 1632/2240 from the machine settings list or network administrator. Run your Internet browser and enter IP address in the address field. You will see the Home page like the one above. Click **Properties**.

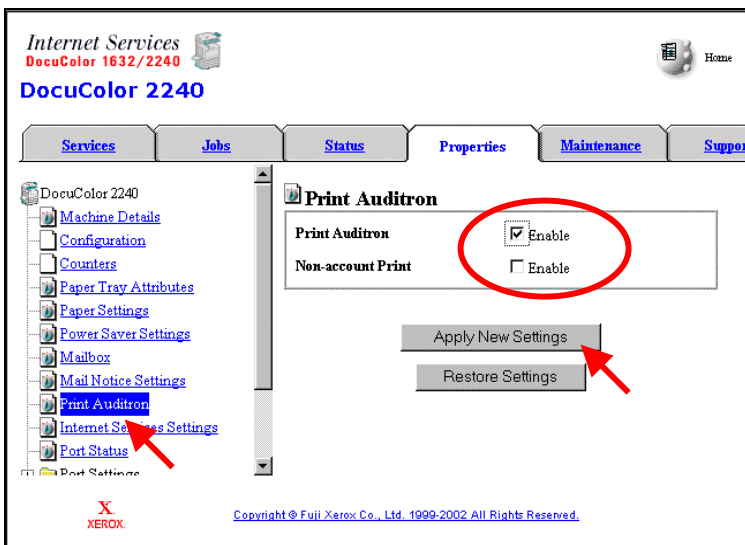


Fig. 2
Click **Print Auditor** then check mark **Enable** and click **Apply New Settings**.
Note: In an environment that includes Mac's, enable, next to "Non-Account" Print must be checked in order for the Mac users to be able to print.

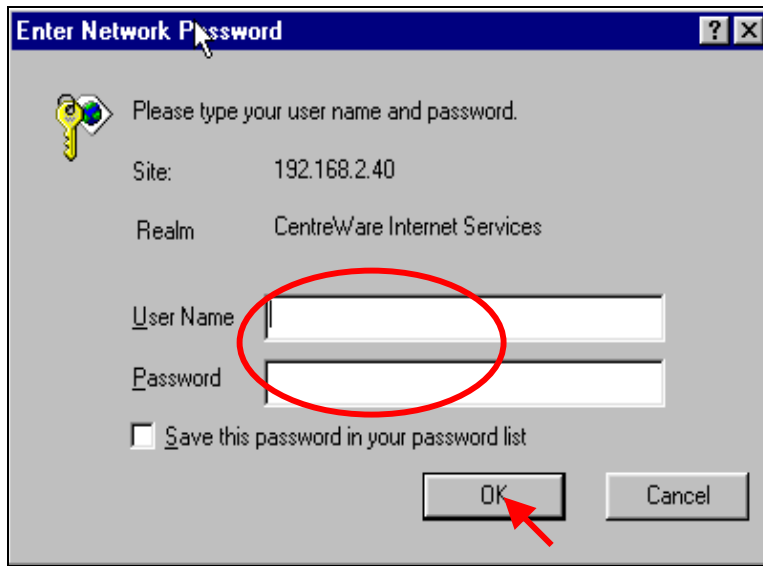


Fig. 3
Enter the User Name and Password. Click **OK**. (See Machine Administration User Guide for default password)

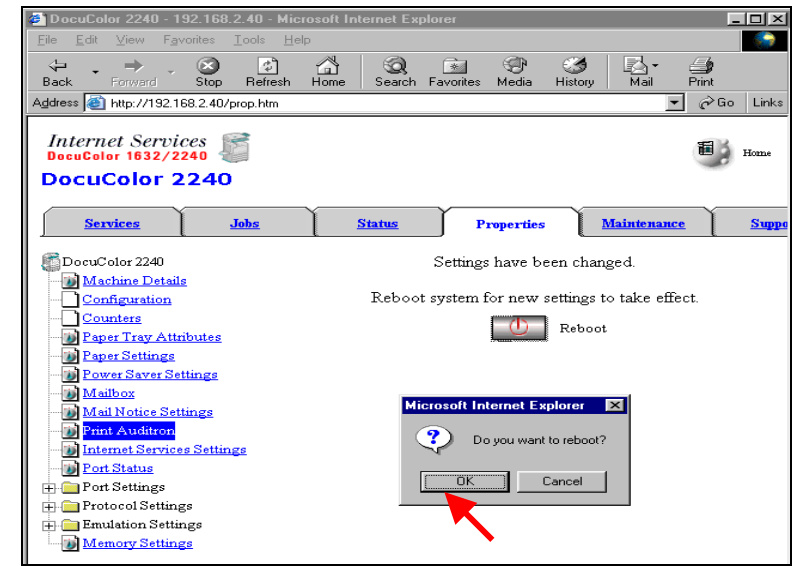


Fig. 5
Click **OK** (The DC 1632/2240 will take approximately 2 minutes to reboot.)

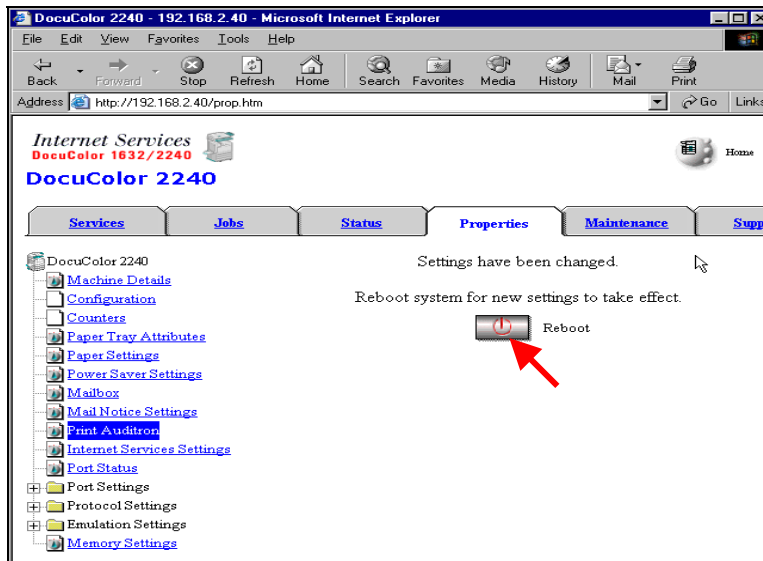


Fig. 4
The "Settings have been changed" confirmation screen appears. Click **Reboot**.

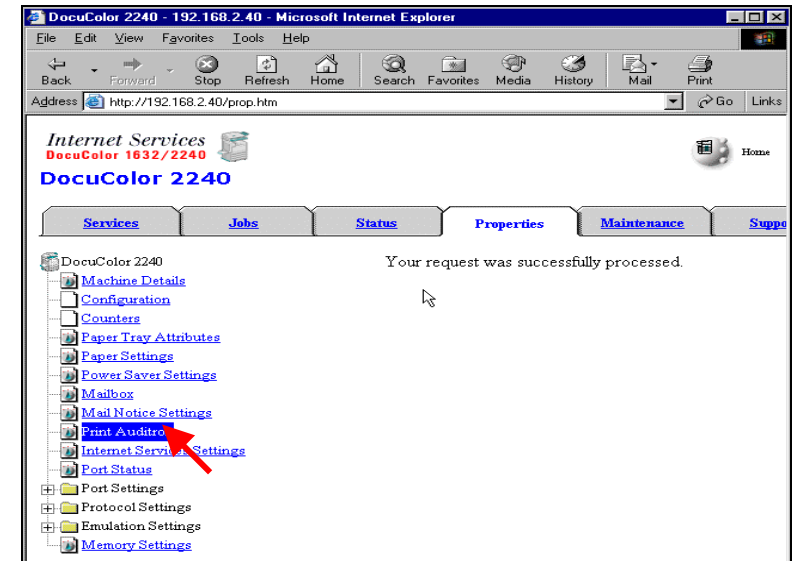


Fig. 6
Click **Print Auditor** on the left to refresh the web page.

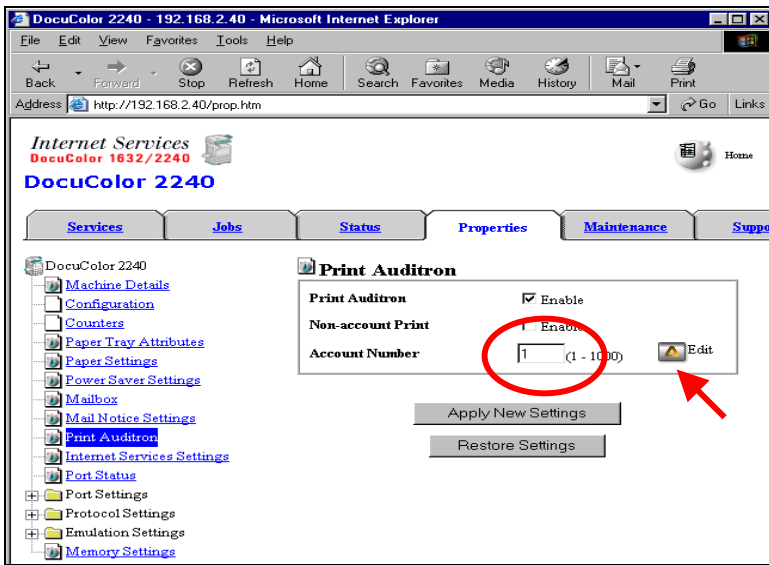


Fig. 7
Enter an unused Auditor Account Number, then click **Edit**.

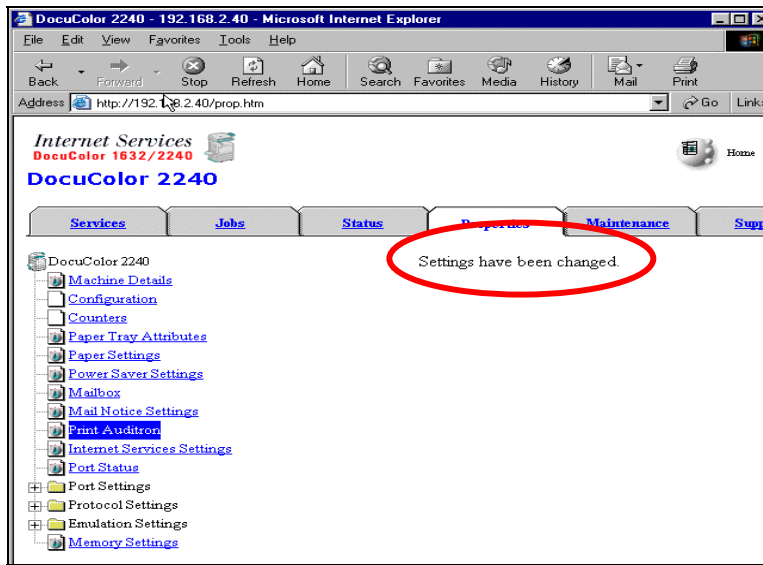


Fig. 9
* Ensure the “Settings have been changed” message appears.
You are now ready to configure the DC 1632/2240 print driver.

Quick Start Guide

Audiron Setting for Print Part 1 of 2

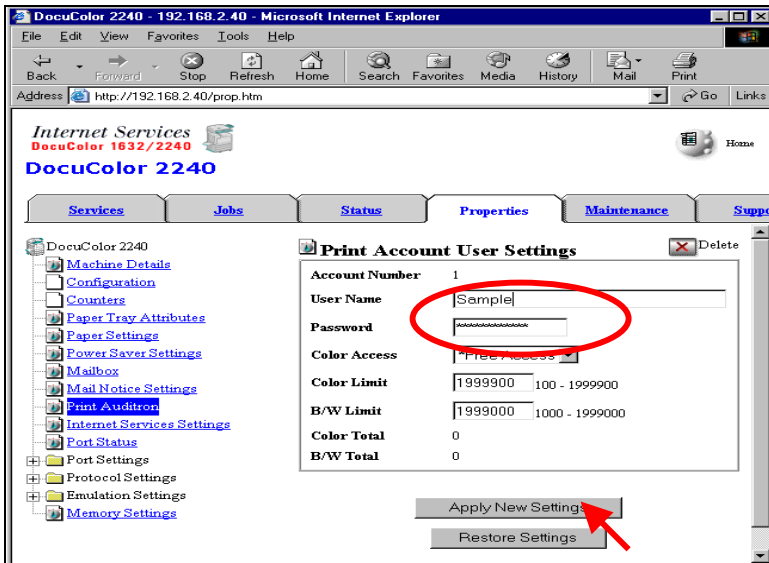


Fig. 8
Enter a User Name (1 to 31 characters) that is not currently in use.
Enter a Password (must be 4 to 12 numeric digits only) that is not currently in use. Click **Apply New Settings**.

Continue with Auditor Setting for Print Part 2 of 2.



THE DOCUMENT COMPANY

XEROX

DocuColor 2240/1632

FOR PCL DRIVER ONLY:

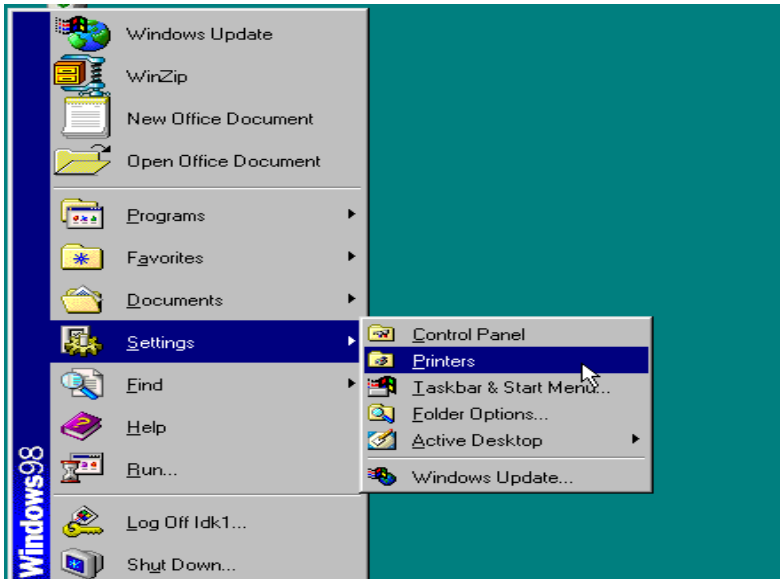


Fig. 1
Click Start | Settings | Printers to open the printers folder.
* This screen may vary depending on the operating system of the computer.

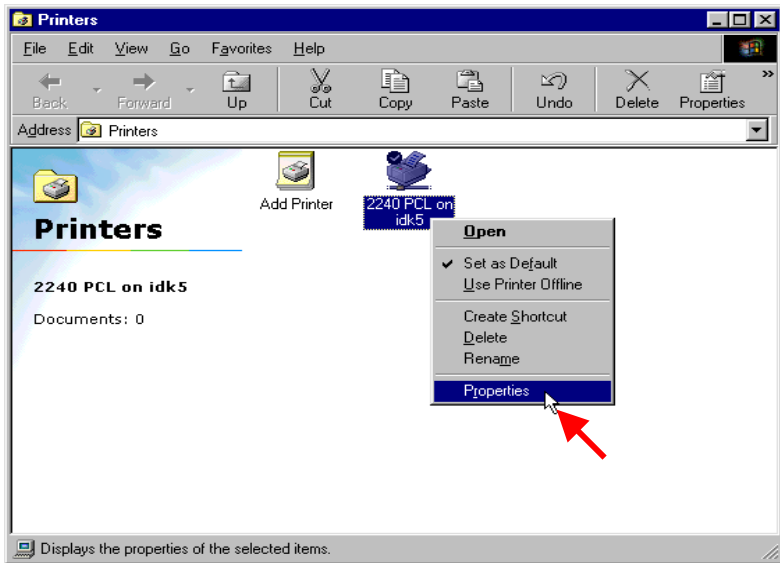


Fig. 2
Right-click the DC 1632/2240 printer icon and select **Properties**.

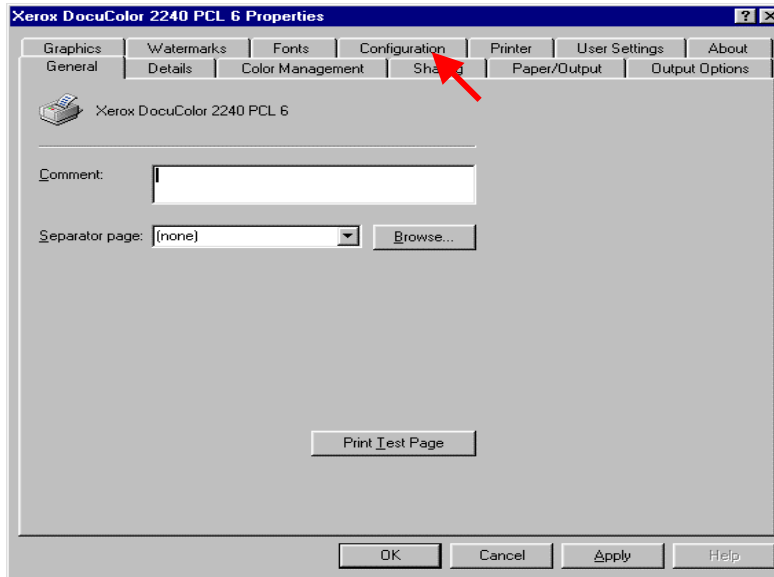


Fig. 3
Click the **Configuration** tab.

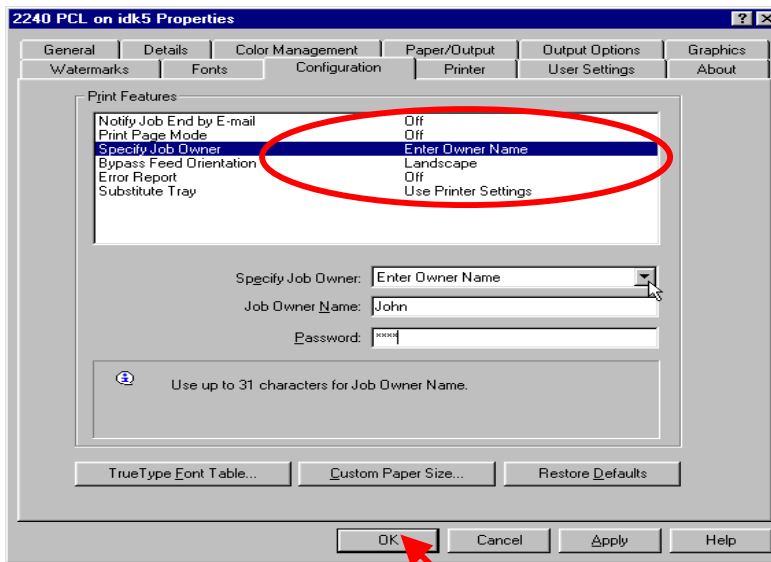


Fig. 4
From the Print Features menu, highlight **Specify Job Owner**. In the Specify Job Owner pull-down menu, select **Enter Owner Name**. Enter the user name and password for the Job Owner previously configured on the Internet Services screen for the DC 1632/2240. Click **Ok**. You are now ready to print.

FOR POSTSCRIPT DRIVER ONLY:

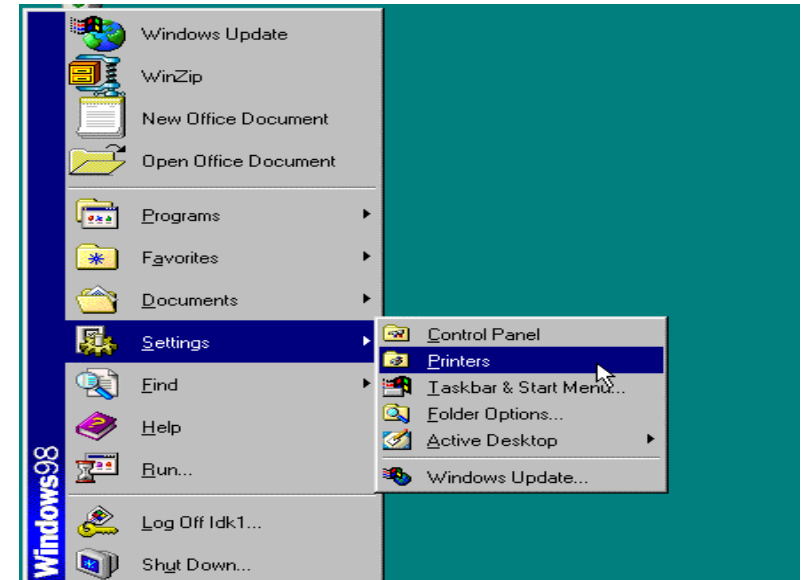
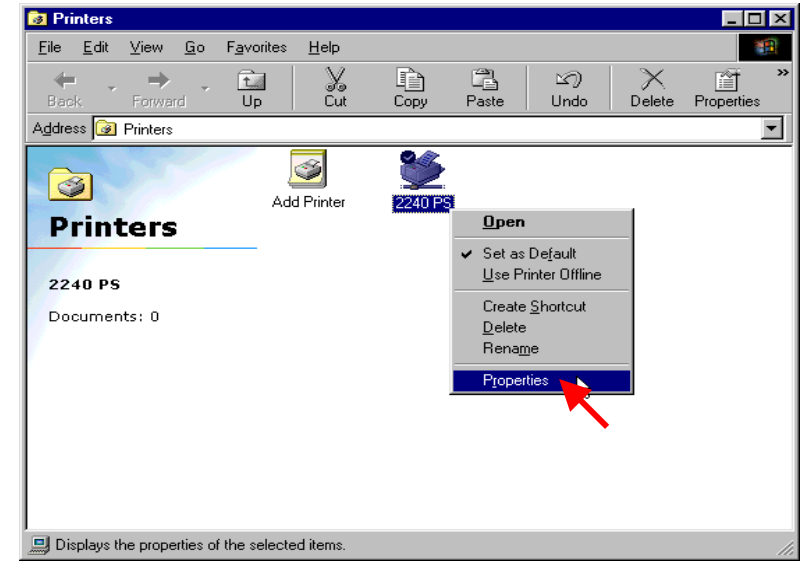


Fig. 5
Click Start | Settings | Printers to open the printers folder.
This screen may vary depending on the operating system of the computer.



* Fig. 6
Right-click the DC 1632/2240 printer icon and select **Properties**.

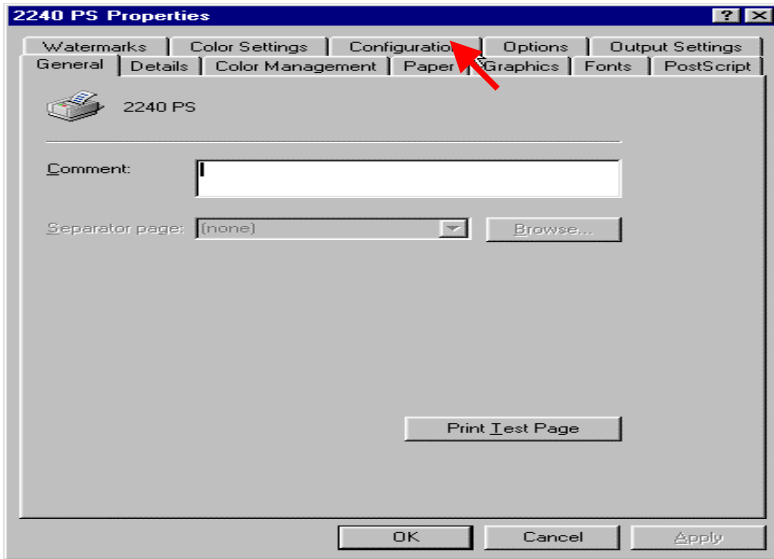


Fig. 7
Click **Configuration** tab.

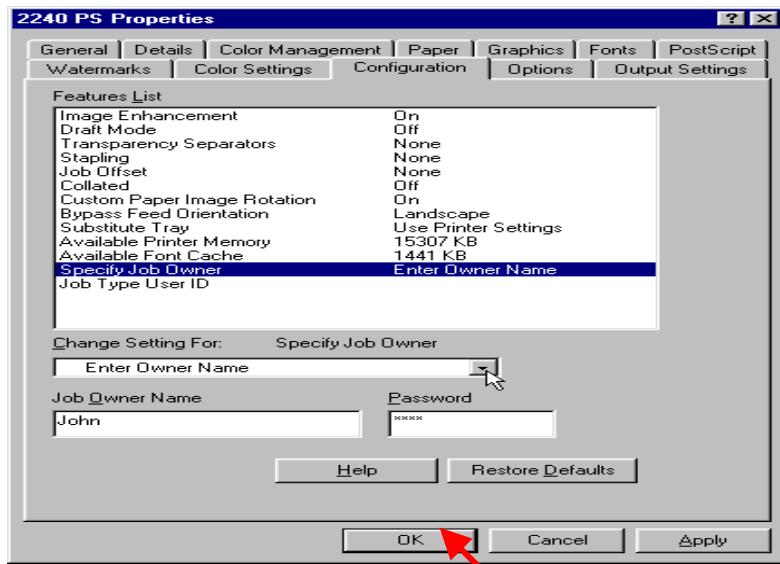


Fig. 8
From the Features List, highlight **Specify Job Owner**. In the Specify Job Owner pull-down menu, select **Enter Owner Name**. Enter the user name and password for the Job Owner previously configured on the Internet Services screen for the DC 1632/2240. Click **Ok**. You are now ready to print.

Note:
If the auditron print feature is enabled then all users must have the proper settings in their driver before they are able to print. "Non-Account Print" must be enabled so that Mac users can print while the auditron print feature is "Enabled".

Quick Start Guide

Auditron Setting for Print
Part 2 of 2



DocuColor 2240/1632

THE DOCUMENT COMPANY
XEROX