

16

Using the Fiery WebTools

The Fiery utilities enable remote users to view server functions. Users may also have the ability to manage jobs remotely if the system administrator has assigned them such privileges.

This chapter provides an introduction to the Fiery WebTools, providing a description of the tools and the procedure for accessing them.

Fiery WebTools Overview

Fiery WebTools reside on the DocuColor 2006 and can be accessed from Windows 95/98, Windows 2000, Windows NT 4.0, and Mac OS client workstations with Internet browsers that support the Java language.

The Fiery software has a home page that lets you view server functions and manipulate jobs remotely.

Some of the functions, such as WebSpooler, may require a password if the administrator has set Administrator and Operator password.

The Status, WebLink, and WebDownloader WebTools do not require any special access privileges. As long as the administrator has enabled Web Services in Setup and has provided users with the IP address of the printer, anyone can use these WebTools.

The following table summarizes the Fiery WebTools accessed from the Fiery home page and refers you to the appropriate documentation for support.

WebTool	Summary
Status	Displays the jobs currently processing and printing
WebSpooler*	Enables viewing, reordering, manipulating, reprinting, and deleting jobs currently spooling, processing, or printing. Enables user to view, print, and delete the Job Log.
WebLink	Provides a link to another web page, provided you have a valid Internet connection. The initial WebLink destination is www.xerox.com . The destination can be changed by the Administrator.
Installer	Enables downloading of the printer file installers directly from the server.
WebDownloader	Enables downloading of PostScript, PCL, EPS, and PDF files to the printer
WebSetup*	Enables the Administrator to modify the Fiery configuration (Setup) remotely.
Font Manager	Enables downloading of fonts to the printer

*Specific procedures for the Fiery Link, WebSpooler, and WebSetup utilities are covered in separate chapters. Refer to the chapters *Using Fiery Link*, *Using Fiery WebSpooler*, and *Performing the setup from WebSetup* for more information.

The following sections of this chapter contain more information and procedures about the other WebTools.

Accessing the Fiery WebTools

Open the Internet browser application.

1. Enter the IP address or the DNS name of the DocuColor 2006 in the URL line of the browser.
2. If a Log In dialog box is displayed, select **Guest** and **OK**.



The Log In dialog box is displayed only if the administrator has set a password. Guest access is sufficient to use the Status, WebLink, and WebDownloader WebTools, as described in this section.

The Fiery WebTools home page is displayed, with the individual Fiery WebTools listed on the left.



3. To launch one of the Fiery WebTools, select the name of the tool you want to access.

Move the cursor over the buttons to display information about the selections.

Using the Status WebTool

The Status WebTool displays the jobs that are currently processing and printing.

1. Launch your Internet or Intranet browser. Access the Fiery WebTools home page.
2. Select the **Status** button.

The current RIP status and Printer Status are displayed.



3. To open a new browser window for the Status display, select **Float**. You can then close other browser windows and leave the Status window open to continue checking which jobs are currently RIPping and printing. As long as you keep the Status window open, it is dynamically updated.

To obtain more information about the status of jobs, use Fiery WebSpooler. You can also use Fiery Link as described in the chapter *Using Fiery Link*.

Using WebLink

WebLink connects you to a help page or multiple web pages, provided you have a valid Internet connection. The administrator at your site can set the WebLink destination.

1. Access the Fiery WebTools home page
2. Select the **WebLink** button and view the information available there.

Using the Installer WebTool

The Installer WebTool enables you to download printer drivers directly from the printer to your workstation.



Do not use this tool with Windows 2000 printer drivers.

1. Launch your Internet or Intranet browser. Access the Fiery WebTools home page.
2. If a Log in dialog box is displayed, select a **login level**. Enter a **password** if necessary. Select **OK**.



The Log In dialog box is displayed only if the administrator has set a password. No password is required to log in as a Guest. Guests have full access to the Installer WebTool.

3. Select the **Installer** button.

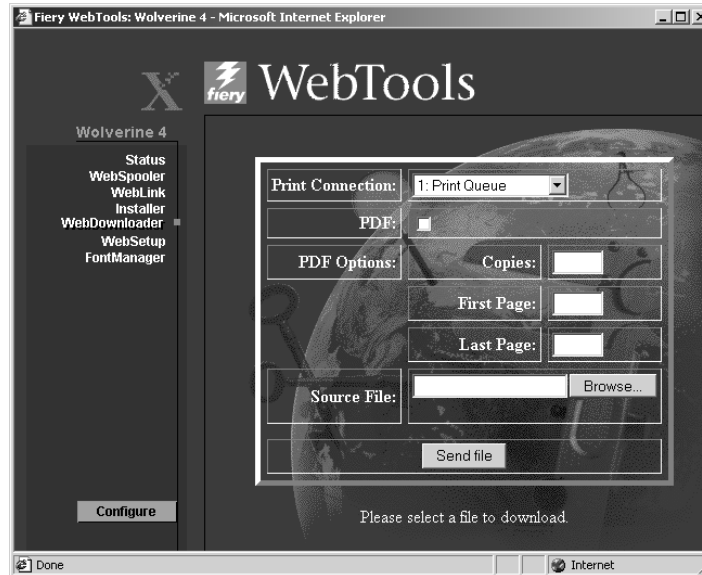


4. Under the name of your operating system, select **Printer Files**.
For Windows workstations, a dialog box is displayed, prompting you to save the file to the location you select.
For Mac OS workstations, a folder named Printer Driver is downloaded to the desktop in a BinHex-encoded, compressed format. If your internet browser is equipped with an expander utility such as Stuffit Expander, the folder is decoded and decompressed automatically.
5. Perform one of the following:
 - For Windows workstations, browse to the **location** where you want to save the **Prntdrv.exe** file and select **Save**.
 - For Mac OS workstations, if the Printer Driver folder was not automatically decoded and decompressed, launch a utility that performs that function.
6. For Windows workstations, double-click the **Prntdrv.exe** file or browse to the **location** where you want to install the folder and select **Next**.
7. Install the appropriate printer driver for your operating system. Refer to the chapter *Installing the user software* for your operating system.

Using WebDownloader

WebDownloader enables you to send PostScript, Encapsulated PostScript (EPS), PCL, and Portable Document Format (PDF) files to the printer without first opening the file in an application.

1. Launch your Internet or Intranet browser. Access the Fiery WebTools home page.
2. Select the **WebDownloader** button.



8. Select the **queue** in the Print Connection drop-down menu.
9. You can download files to the **direct**, **print**, or **hold** queue. Files sent to the **print** queue are spooled in the printer memory. Files sent to the **hold** queue remain in memory until they are moved to the print queue or are deleted.
10. If you are sending a PDF job, select the **PDF** check box. If this checkbox is not selected, the download may cause PS error.
11. Enter the desired number of copies to print. If you want a specific page range to print, enter the first page and last page of the range.
12. Select the **Browse** button to search for the file to download. Select the **file** and **Open**.
13. Select the **Send File** button.

Font Manager

Font Manager enables you to download, retain, or restore special fonts that are not included in the built-in printer fonts.

1. Launch your Internet or Intranet browser. Access the Fiery WebTools home page.
2. Select the **Font Manager** button.



3. To *download* a font, select the **Browse** button and search for the desired font. Select the **Download Font** button.
4. To *retain* the downloaded font, select the **Validate Only** check box. Select the **Browse** button and search for the desired **Font Backup File**. Select the **Download Font Backup File** button.
14. To *restore* the backup font, select the **Get Font Backup File** button.