

19

Performing the setup from WebSetup

After you have performed initial Setup (Server Setup, Network Setup, and Printer Setup) from the Control Panel, users with access privileges can complete or change most Setup options from a Windows computer using the Fiery WebSetup WebTool.

Accessing Setup

Remote Setup is performed from a Windows computer using Fiery WebSetup.

Some Setup options cannot be accessed from remote Setup; use the Printer Control Panel instead.

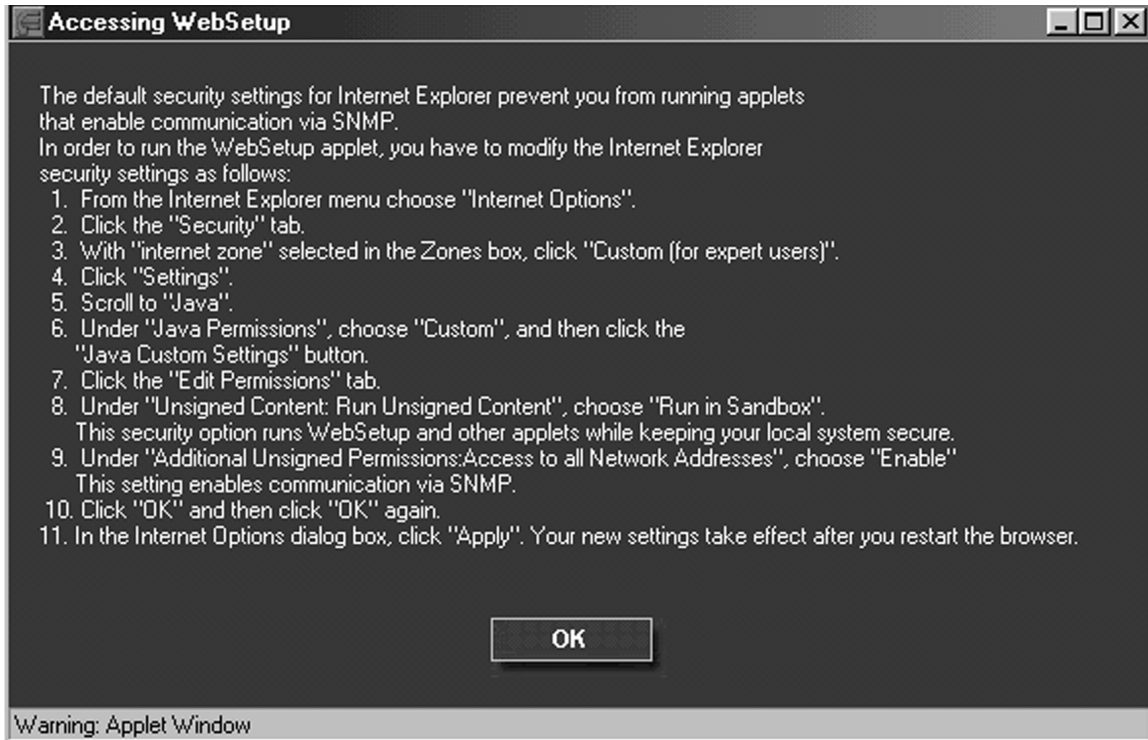
To use Fiery WebSetup, you must enter the Administrator password. This is set either from the Printer Control Panel or Fiery WebSetup.



Fiery WebSetup is supported for Windows 95/98, Windows 2000, and Windows NT4.0 workstations only.

Enabling Java services

When you access WebSetup for the first time, the Accessing WebSetup screen may display, indicating Java is not enabled. Follow the instructions on the screen to enable Java services.



Accessing Fiery WebSetup

1. Start your Internet browser application.
2. Enter the IP address of the printer in the URL line of the browser. This information is available from your system administrator.
3. Log in as the Administrator.
The DocuColor 2006 welcome page displays. The individual Fiery WebTools are listed on the left.
4. Select the **WebSetup** button.

General Setup options

Regardless of how you access Setup remotely, the following window is displayed.



You may select from the following categories of options:

- Server Setup
- Network Setup
- Printer Setup

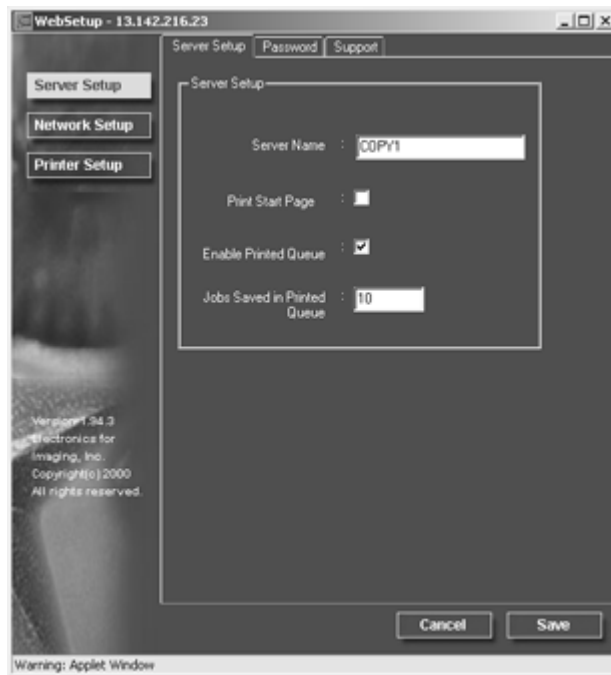
Refer to the sections that follow for more details.

If you change a Setup option, the **Cancel** and **Save** buttons flash when you select a different Setup category. You must select **Save** or **Cancel** before you can proceed to another Setup Category or exit Fiery WebSetup. If necessary, the system will display a prompt to reboot the server to apply the changes.

Server Setup

In Server Setup, you can specify server settings; set, change or remove server passwords; and specify job log page size and support options.

1. Select the **Server Setup** button from the WebSetup screen to display the Server Setup tabs.



Perform the following:

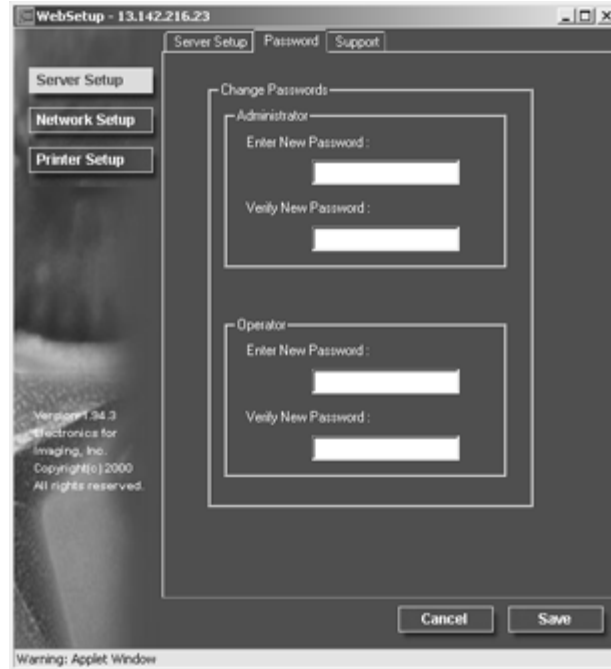
- a. Specify a default **Server Name**. This is the name that displays in the Chooser on an AppleTalk network.



Do not use the Device name (DocuColor 2006) as the server name. If you have more than one server, be sure to assign them different names. Windows NT 4.0 does not support two computers with the same name in the same workgroup or domain.

- b. Select the **Print Start Page check box** to print a start page each time the printer is restarted. The Start Page lists server name, current date and time, amount of installed memory, last calibration date, network protocols enabled, and print connections published. To deselect the option, ensure there is no check mark in the box (default).

- c. Select the **Enable Printed Queue check box** to create a storage location on the hard drive of the printer for the most recent print jobs. When this option is enabled (default), users with Administrator privileges can use the WebSpooler to reprint jobs in the printed queue without sending those jobs again. To deselect the option, ensure there is no check mark in the box. If not enabled, jobs are deleted immediately after they are printed.
 - d. In the **Jobs Saved in Printed Queue** text field, enter the **number of jobs** (from 1—99) to be saved in the Printed Queue. Jobs in the printed queue take up space on the hard disk.
2. Select the **Password** tab from the Server Setup tab and perform the following in either the Administrator or Operator box, as is appropriate.



Entries are limited to 19 characters. The Administrator password controls access to Setup privileges and all operator privileges. Operator passwords control access to job management functions through the job management tools.

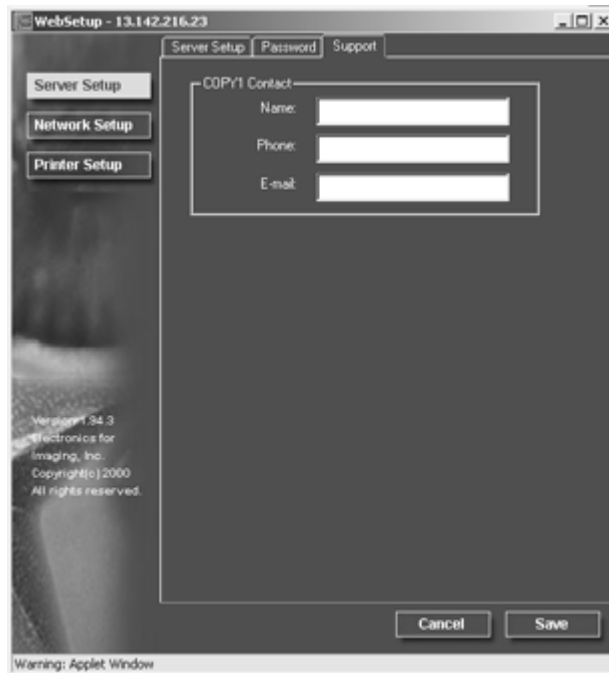
If you do not set passwords, all users will have access to setup functions (including setting passwords) and job control. It is strongly recommended that you set at least an administrator password to protect the server from unauthorized changes to setup.

- a. Type an administrator **password** in the **Enter New Password** text box.
- b. Type the same **password** in the **Verify New Password** text box. The new password is in effect until you change it again.

Write down the password and store it in a secure place. If the password is lost or forgotten, system software will have to be reinstalled.

To remove a password, delete the asterisks (*) in both the Enter New Password and the Verify New Password fields.

3. Select the **Support** tab from the Server Setup tab and type in the relevant names, phone numbers, and e-mail addresses for your internal support personnel. Entries are limited to 18 characters.



Network Setup

Network Setup configures the printer to receive print jobs over the networks that are used at your site. If the printer is configured to enable more than one protocol, it automatically switches to the correct protocol when it receives a print job. When the parallel port and one or two network ports are enabled, print jobs can be received over all ports at the same time.

You can view and specify the following network settings in Network Setup:

Adapters and ports—View currently configured network adapters and port settings.

From local Setup only, the installed network boards are displayed. You cannot change this information. From remote Setup, you can enable Ethernet or Token Ring. You can also enable the parallel port, regardless of the network type you use.

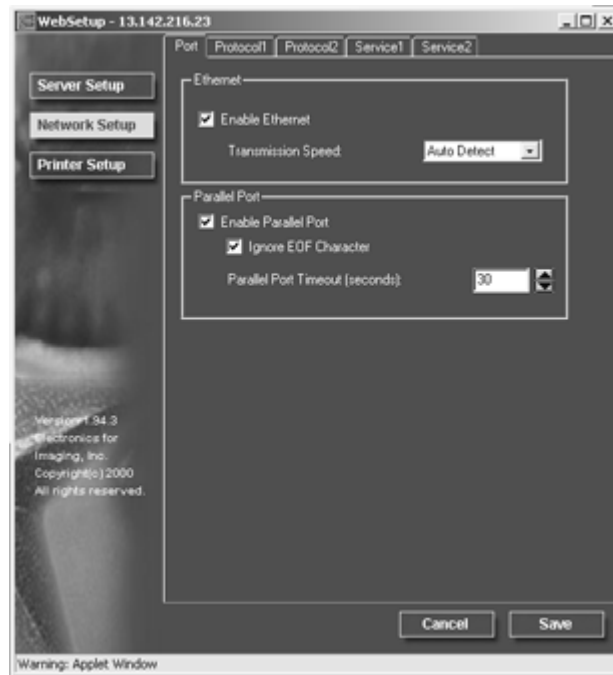
Protocols—including AppleTalk, IPX/SPX and TCP/IP.

Print Services—including LPD printing (TCP/IP), NetWare printing (PServer), Windows print sharing (SMB), HTTP support (WWW), and Port 9100 printing.

Once you enter IP addresses, the server will store them, even if you later disable TCP/IP. If you need to assign the printer IP address to another drive, set the address to a null address.

In Network Setup, you can specify settings on the following tabs: Port, Protocol1, Protocol2, Service1, and Service2.

1. Select the **Network Setup** button from the WebSetup screen to display the Network Setup tabs.



2. If it is not already displayed, select the **Port** tab and perform the following:
 - a. Select the **Enable Ethernet check box** if the printer is to be connected to an Ethernet network. If this box is selected, the Transmission Speed option is enabled and the TCP/IP Ethernet options listed under the Protocol1 tab are enabled.

Select a **Transmission Speed** from the drop down box. Select **Auto Detect** if your network environment is mixed, or select the speed (10 Mbps or 100 Mbps) of the network to which the printer is attached. Changing the speed requires rebooting the server.

To deselect the option, ensure there is no check mark in the box.

- b. Select the **Enable Parallel Port check box** if you want to print through the parallel port. This option enables you to connect a single Windows workstation to the parallel port and print directly to the printer. Enabling this option does not conflict with Ethernet or Token Ring communication to the printer. If this box is selected, the Ignore EOF Character and Parallel Port timeout fields are enabled.

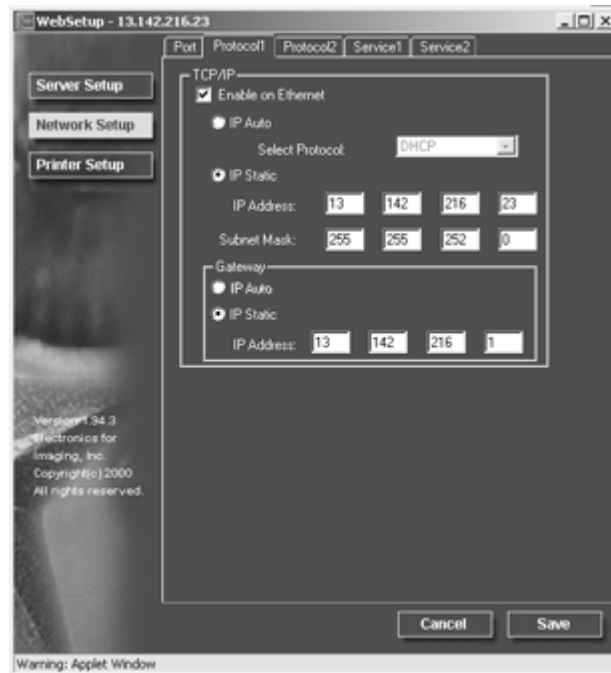
Select the **Ignore EOF Character check box** to direct the printer to ignore end-of-file (EOF) messages and use the Parallel Port timeout value to determine when the end of the file has been reached. This option is required to print PostScript files in binary (not ASCII) format. Under normal circumstances, the box should not be checked.

To deselect the option (default), ensure there is no check mark in the box.

From the Parallel Port timeout drop down box, select the timeout interval in number of seconds (5-60). Until the parallel port job times out, the server cannot receive new jobs through the parallel port. The server can, however, continue receiving network print jobs.

To deselect the option (default), ensure there is no check mark in the box.

3. If you have an Ethernet or Token Ring network, select the **Protocol1** tab from the Network Setup tabs. In this tab, you can specify the protocols used to send jobs to the printer.

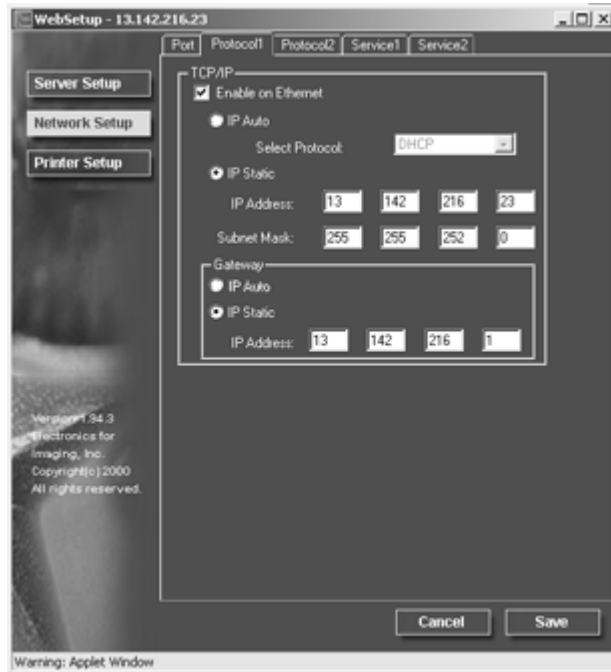


Unlike remote Setup, local Setup does not provide separate settings to enable a protocol and to configure it. For example, remote Setup has two settings for AppleTalk: one to enable AppleTalk and the other to set the AppleTalk zone. Local Setup offers only the setting for the AppleTalk zone. By default, the AppleTalk, IPX/SPX, and TCP/IP protocols are installed and enabled. You can verify a protocol is enabled in the Bindings tab of the Network Control Panel.

Depending on your network configuration, perform one of the following:

- Step 4 if you have an Ethernet network.
- Step 5 if you have a Token Ring network.
- Step 6 if you have an AppleTalk network.
- Step 7 if you have an IPX/SPX frame type.

4. Select the **Enable on Ethernet** check box if you have a TCP/IP network connected to the printer over Ethernet cabling. If the check box is selected, the IP Auto and IP Static radio buttons and the Gateway address fields are enabled.



- a. Select the **IP Auto** radio button to enable the system to find an IP address. Select the appropriate protocol (DHCP, BOOTP, RARP) to be used from the enabled Select Protocol drop down box. The printer reboots when you save your changes and exit Setup. Allow the printer to complete its reboot and return to Idle mode before printing a configuration page or proceeding with any other operation.
- b. To set a specific address, select the **IP Static** radio button to enable the IP Address and Subnet Mask fields and perform the following:

Enter the DocuColor 2006 unique IP address for Ethernet in the **IP Address** text boxes (default address used for network checking is 127.000.000.001). The values in each field are limited to a range of 0-255.

Enter one of the following values in the **Subnet Mask** text boxes:

- 255.0.0.0 if the IP address starts with a number less than 128
- 255.255.0.0 if the IP address starts with a number in the range of 128—191
- 255.255.255.0 if the IP address starts with a number greater than 191 (network defined)

Confirm the Subnet Mask setting with your system administrator before proceeding. In some cases the required setting may be different from those listed.

If your TCP/IP network has a gateway and you expect users outside the gateway to print to the printer using TCP/IP, perform one of the following:

- Select the **IP Auto** radio button to enable the system to find an IP Gateway address to use.
- Select the **IP Static** radio button and type the address in the **Gateway** text boxes (the default address is 127.000.000.001).



In Remote Setup, Token Ring information displays even if you have not enabled Token Ring.

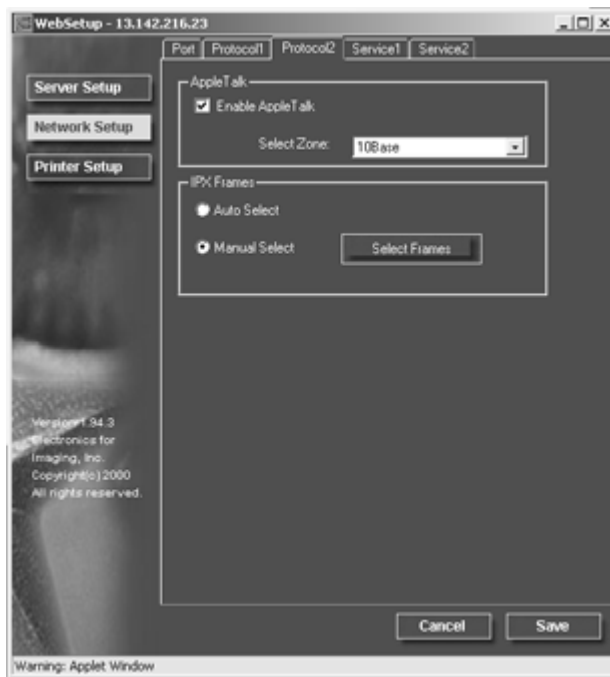
5. Select the **Enable on Token Ring check box** if you have a Token Ring network connected to the printer over Ethernet cabling. If the check box is selected, the IP Auto and IP Static radio buttons are enabled.
 - a. Select the **IP Auto** radio button to enable the system to find an IP address. Select the appropriate protocol to be used from the enabled Select Protocol drop down box.
 - b. To set a specific address, select the **IP Static** radio button to enable the IP Address and Subnet Mask fields and perform the following:

Enter the DocuColor 2006 unique IP address for Ethernet in the **IP Address** text boxes (default address used for network checking is 127.000.000.001). The values in each field are limited to a range of 0-255.

Enter one of the following values in the **Subnet Mask** text boxes:

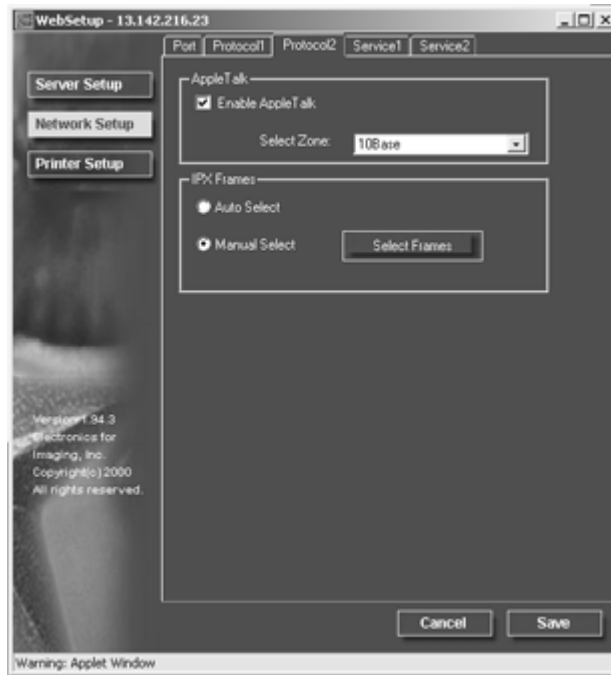
- 255.0.0.0 if the IP address starts with a number less than 128
- 255.255.0.0 if the IP address starts with a number in the range of 128—191
- 255.255.255.0 if the IP address starts with a number greater than 191 (network defined)

6. If you have an AppleTalk network, select the **Protocol2** tab from the Network Setup tabs. In this tab, you can specify the AppleTalk protocols used to send jobs to the printer.



- a. In the AppleTalk box, select the **Enable AppleTalk** check box.
- b. From the Select Zone drop down box, select the AppleTalk zone in which you want the printer to display. If there is only one zone, the printer is assigned to that zone automatically. If you cannot find an AppleTalk zone, your network may have no defined zones or the network cable is not connected.

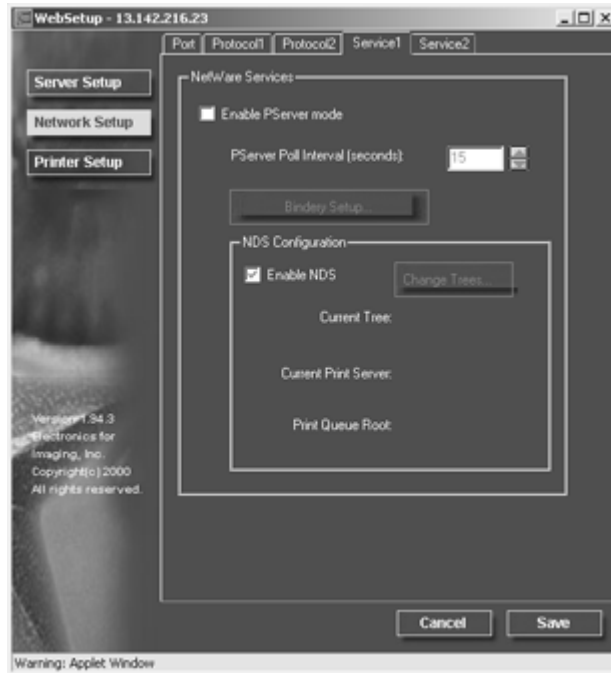
7. If you have an IPX/SPX frame type, select the Protocol 2 tab.



In the IPX Frames box, perform one of the following:

- a. Select the **Auto Frames** radio button to enable the server to select the appropriate frame to use with NetWare.
- b. Select the **Manual Select** radio button to add an IPX frame type. From the **Select Frames** drop down list, select the frame type and the **Add** button. The selected frame type will be added to list. To remove a frame type, select the frame type and the **Remove** button.

8. To specify the Novell NetWare (PServer) options, select the **Service1** tab from the Network Setup tabs.



- a. When the server is connected to a Novell network, select the **Enable PServer mode check box** to enable the options on this tab.



To enable PServer mode, an IPX frame type must be selected using the Select Frames button on the Network Services Protocol 2 tab.

- b. From the PServer Poll Interval drop down box, select how often (in seconds) the Novell Print server should poll the network for new print jobs. The polling interval is limited to a range of 0-3600 seconds.
- c. If your network uses NetWare 3.x or NetWare 4.x in bindery emulation mode, select the **Bindery Setup** button. The Bindery Setup button launches a Novell Setup dialog box from which you can select the group of servers that the print server will poll for print jobs.

From the **Bindery Setup...** drop down list, select a server to add to the polling list and the **Add** button. The server will be added to the Selected Servers list. To remove a server, select the server name and the **Remove** button.



In initial setup, the printer was connected to the network and an NDS directory tree with a printer, print server and one or more print queue objects. You can make any changes to that setup through WebSetup. To modify NDS Setup, you may need permission to browse the NDS tree. If access to the Print Server is restricted, you will need a login password. Only one NDS tree can be connected.

- d. Select the **Enable NDS** checkbox. You can now log in and navigate an existing NDS tree.

The system administrator must create print queues in the NDS Tree associated with the selected Print Server. The Print Queues names must correspond with the published direct, print, or hold queues. The server will not accept print jobs from a print queue whose name does not correspond to an available server queue.

- e. Select the **Change Trees** button. Because you can only have one NDS tree, select the **current NDS tree** and select **Remove**. Select the new NDS tree and select **Add**.

From the **Change Trees** drop down list, select the tree from the Available Trees list and the **Add** button. Only one tree may be added at a time. The selected tree name will be added to list with the tree name, printer server name, and print queue root listed in both the NDS Configuration section of the dialog and the in the NDS Configuration section under the Service tab. To remove a tree, select the tree and the **Remove** button.

9. To specify the Windows Printing Service (SMB) options, select the **Service2** tab from the Network Setup tabs.

Broadcasts from SMB devices cannot be routed beyond their original network segment without a WINS name server. Setting up the WINS name server is outside the scope of this documentation. To find out if a name server is available, contact your system administrator.



Use all uppercase letters in the following fields.

- a. To enable Windows clients to print to the Hold, Print, and Direct queues, select the **Enable Windows Printing Service check box** to enable the options on this tab.



TCP/IP must be configured on the Windows client workstation and the print server.

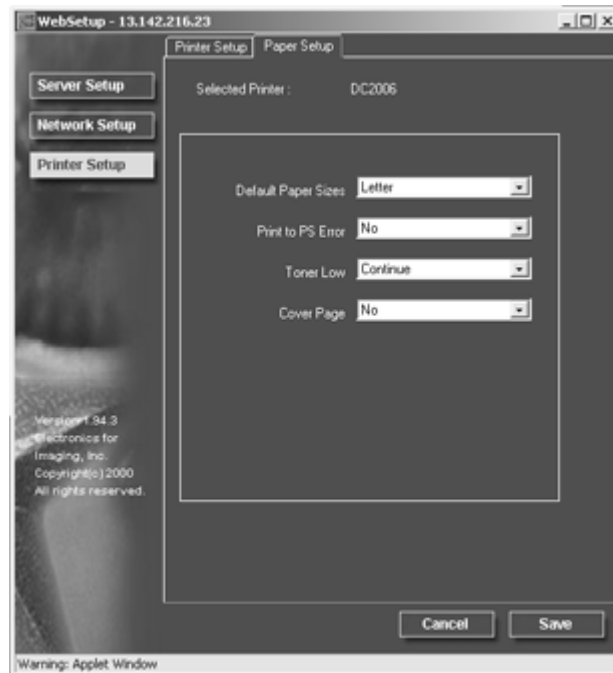
- b. Type the name (up to 15 characters) that enables you to access the server on the network in the Server Name text box.

- c. Type relevant information (up to 15 characters) about the server in the Comment text box.
- d. Type the network domain or workgroup (up to 15 characters) of the server in the Domain or Workgroup text box.
- e. Perform one of the following:
 - If you are using Ethernet or Token Ring, check the Auto IP radio button.
 - If you are using a WINS Server, enter the WINS Server IP address in the **IP Address** text boxes

Printer Setup

Use the Printer Setup to specify the printer default page description language (pdl), paper size, and ability to print when Dry Ink is low. You can also set options for PostScript and PCL printing.

1. Select the **Printer Setup** button from the WebSetup screen.
2. Select the **Paper Setup** tab to specify PostScript printing options.



- a. Select the **Default Paper Size** from the Default Paper Sizes drop-down box to specify the kind of paper to use for printing standard jobs.
- b. Select **Yes** or **No** in the Print to PS Error drop down box. Select **Yes** to print the portion of the job that was processed before the error occurred along with the error message or the PostScript code if no image data was processed to that point. This information can be useful in troubleshooting PostScript files that will not print. Select **No** to cancel the job entirely whenever a PostScript error is encountered. The processed portion of the job and the PostScript error information is stored on the printer. You can view the job and the error information using the job management tools.
- c. Select **Continue** or **Stop** in the Toner Low drop down box. (Continue is the default.) Specify the behavior of the printer when the Dry Ink (Toner) is low. Select **Continue** to print until there is no more Dry Ink or **Stop** to cease printing immediately until the Dry Ink has been replaced.
- d. Select **No** or **Yes** in the Cover Page drop down box. When **Yes** is selected, each job is printed with a cover page that includes the name of the user who sent the job, the document name, the server, the time the job was printed, the number of pages printed, and the status of the job. If a PostScript error occurs and the Print to PS Error option is set to Yes, the PS error message replaces the job status.



The following option available only when printing from Windows computers; it is not available in Remote Setup.

3. Select the **Printer Setup tab** to specify PCL printing options. Find PCL Setup under the printer name in the directory tree.

For each of the following, select the desired option icon in the tree and the desired default value in the box that displays below the tree.

- a. Select the **Paper Size** from the drop down box.
- b. Select **Portrait** or **Landscape** from the **Default Orientation** drop down box. Select **Portrait** to orient printing across the short edge of the page or **Landscape** to orient printing across the long edge of the page.
- c. Use the scroll box to specify the **Form Length** or lines of text (5-128) to print on each page. The default length is 60.



The form length varies according to the orientation of the paper.

- d. Use the scroll box to specify the default Font Size in **Points** of a proportionally scalable font (4.00 to 999.75). The point size is significant to a quarter of a point. The default is 12.00.
- e. Use the scroll box to specify the **Font Pitch** or number of fixed-space PCL characters (.44-99.99) per horizontal inch to print. The pitch value can be specified to two decimal places. The default is 10.00.
- f. Select a **PCL Symbol Set** to print from the drop down box. A symbol set is specific to a font and is generally designed for a single application. For a complete list of available PCL Symbol Sets and their corresponding font numbers, refer to the Fonts List.

- g. Select **Internal** or **Softfont (Internal)** from the Font Source drop down box. Internal fonts are built into printer memory and are listed on the PCL font list. Soft fonts are fonts that have been downloaded to the printer.
- h. Use the scroll box to specify the **Font Number** to print. The default is 0. For a complete list of available PCL fonts and their corresponding font numbers, refer to the Fonts List.
- i. Select a **Paper Size for System Pages** to set the size of a print area on the paper, not the size of the paper itself. System pages are printed from the Printer Control Panel.

Exiting Setup

After you have finished specifying Setup options, select **OK** and close the Setup dialog box. You are notified that the server must be restarted for the new settings to take effect and given the choice to reboot now or later.

After you have completed Setup and rebooted the server for the first time, install user software for printing on remote workstations. Refer to the chapter *Installing user software* that is appropriate to your system. To confirm the network connection and your Setup, print a test job from a remote workstation.