

10

Installing user software in a Windows 2000 environment

This chapter provides a brief overview and instructions for installing software on Windows 2000 workstations. Ensure that your printer is properly connect and configured for your network. For details, refer to the chapters *Connecting to the network* and *Performing the setup from the Printer Control Panel*.

Use the contents of this chapter as follows:

- Depending on your configuration, use one of the following sections to install printer drivers and set up appropriate connections:
 - Parallel port printing
 - TCP/IP and LPR printing (for a new installation or an upgrade of Windows NT 4.0 to Windows 2000)
 - IPX/SPX printing
 - SPM printing
 - SMB printing
- Specify printer options with the section *Setting the printer options*.
- If necessary, refer to the section *Installing additional software for Windows 2000*.

All necessary files are included on the User Software CD.

Overview of installation

Installing the DocuColor 2006 user software includes the following:

- Installing the PostScript or PCL printer driver and corresponding printer description files and setting up the printer driver to communicate with the printer through the Add Printer Wizard
- Setting the printer options
- Copying additional files from the User Software CD as needed

Do not install these files using the Installer WebTool.

Before you begin

1. If your system administrator has not already done so, connect the printer to the desired port on the workstation. For details, refer to the chapters *Connecting to the network* and *Performing the setup from the Printer Control Panel*.

If you are uncertain what type of network you have, contact your system administrator.

2. Print a configuration sheet at the printer to obtain the name of the printer and settings that will be used in the following procedures.

Installing the user software for parallel port printing

Use this procedure to install the printer. It prepares your system for local printing through the parallel port.



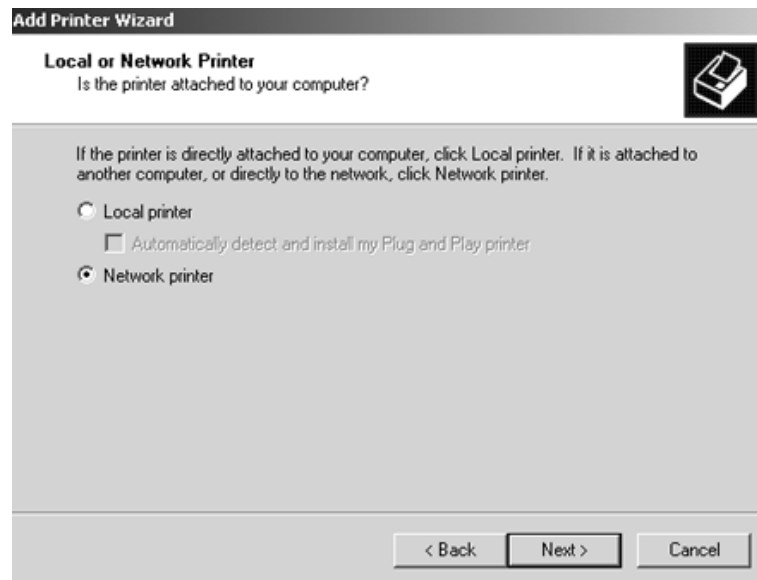
If you have previously installed a print driver for the DocuColor 2006, perform the uninstall procedure before installing the new driver. For more information, refer to your Windows documentation.



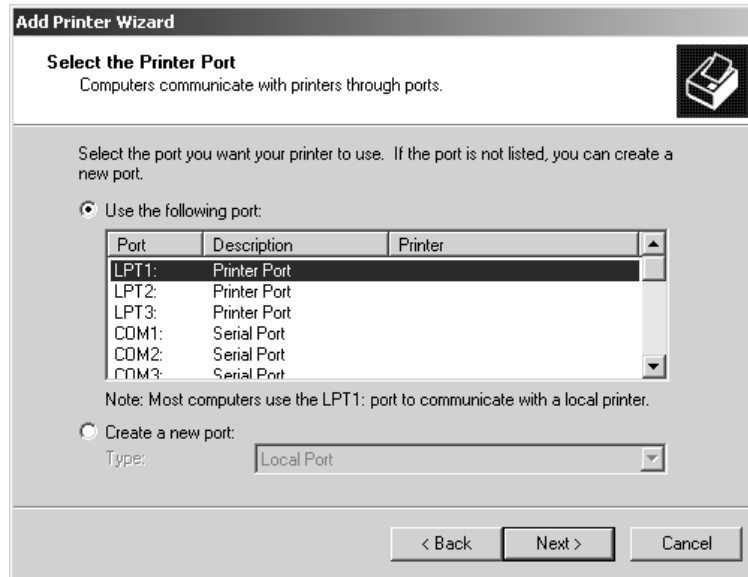
Do not install the printer files using the Installer WebTool.

1. Select the **Start** button, **Settings**, and **Printers**.
2. Double-click the **Add Printer** icon to display the Add Printer Wizard and select **Next**.
3. Select the **Local printer** radio button and **Next**.

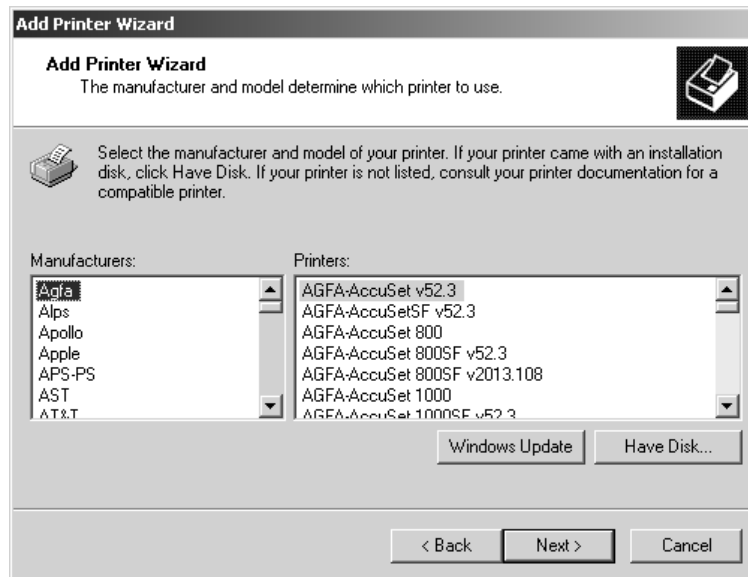
Ensure that the **Automatically detect and install my Plug and Play printer** check box is **not** selected.



4. Select **LPT1: Printer Port** and **Next**.



5. In the dialog box displaying lists of manufacturers and printers, select **Have Disk**.



6. Insert the CD in the CD-ROM drive, select the CD-ROM drive (for example, D:\) from the drop-down box and select **Browse**.

The Install From Disk dialog box prompts you for the disk.

7. Browse to the **English\Prntdrv\Ps_drvr\Win_2000** folder and ensure that **oemsetup.inf** or **oemsetup** is selected.

8. Select **Open**.

The path is copied to the Install from Disk dialog box.

9. Verify the path is correct and select **OK**.

10. In the Printers box, select the **Xerox DocuColor 2006** option and select **Next**.

11. Using a maximum of 31 characters, enter a **name** for the printer or leave the default name in the Printer Name box.



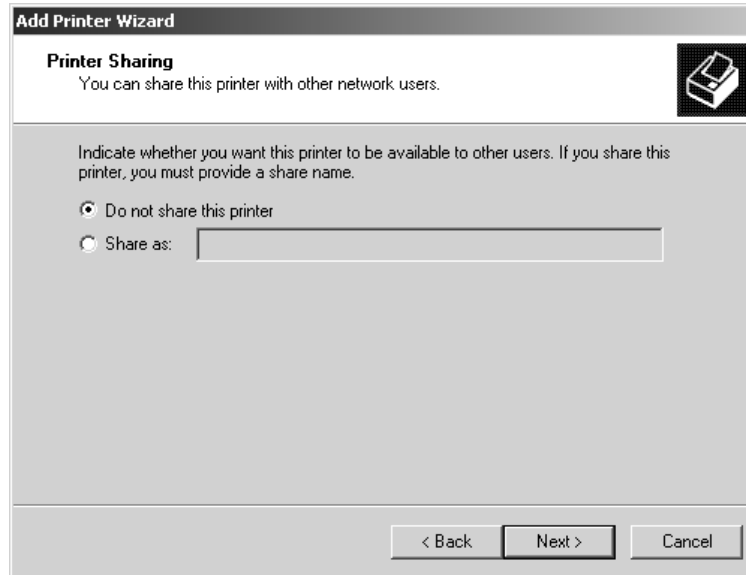
Entering more than 31 characters may cause printing problems with some network applications.

12. If you want the DocuColor 2006 to be the default printer, select the **Yes** radio button; if not, select **No**. Select **Next**.

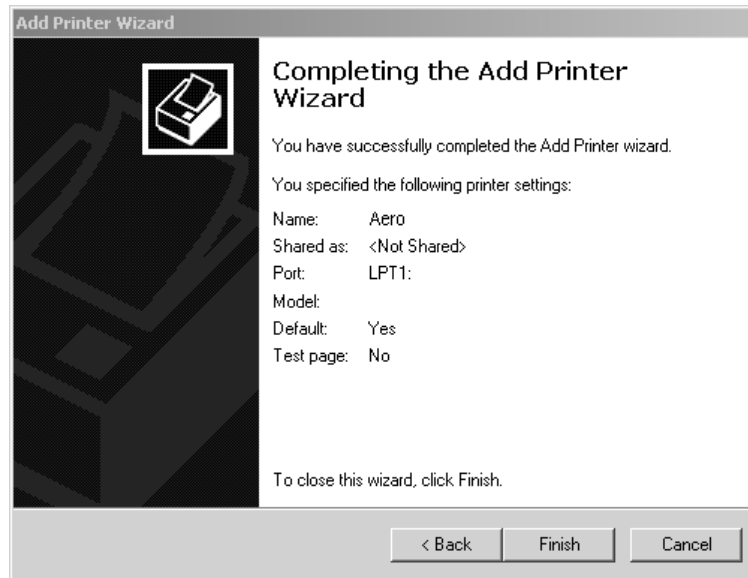
13. Indicate whether you want the printer installed as a shared printer.

If you select **Share as**, you must also enter a Share Name for the printer (or leave the default name) and make selections from the list of operating systems used by client workstations.

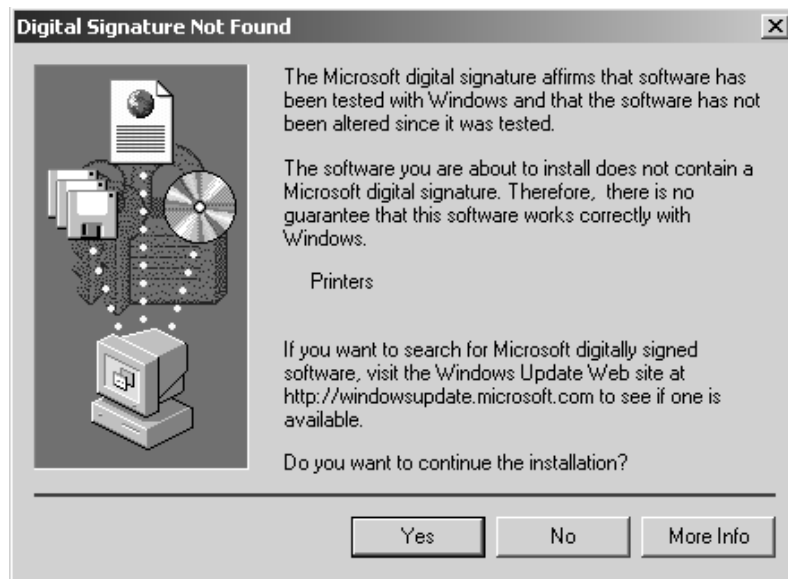
Select **Next**.



14. Select the **No** button to printing a test page and select **Next**.
15. Verify the printer settings specified, and select **Finish**.



The Digital Signature Not Found window indicates that the printer driver for Windows 2000 does not have a Microsoft digital signature. However, printing is processed correctly.



16. Select the **Yes** button.



*If this is the first printer driver you are installing on the computer, you are prompted to install additional files from the Windows 2000 CD. Insert it into the CD-ROM drive, browse to the i386 folder, and then select **OK**.*

When installation is complete, the Printers window is displayed with an icon for the newly installed printer.

17. Right-click the **printer** icon and select **Properties**.
18. Select the Advanced tab to display Spool Settings.
19. Select either the **Spool print jobs so program finishes printing faster** option or the **Print directly to the printer** option.
- If the Port Timeout in Seconds is set to 10, you can select either option; however, spooling is faster.
 - If the Port Timeout in Seconds is set to 5, select the **Print directly to the printer** option.
20. To confirm the connection, print a Windows test page. Select the **General** tab. Select the **Print Test Page** button and **OK**.

You are now ready to print from your applications through the parallel port.

Configure any options installed on your printer. Refer to the section *Setting the printer options*.

Installing the software for TCP/IP and LPR printing (new installation of Windows 2000)

Before you continue, print a configuration sheet at the printer to obtain the IP address assigned to the DocuColor 2006, as well as the Subnet mask and gateway address, if they are used.

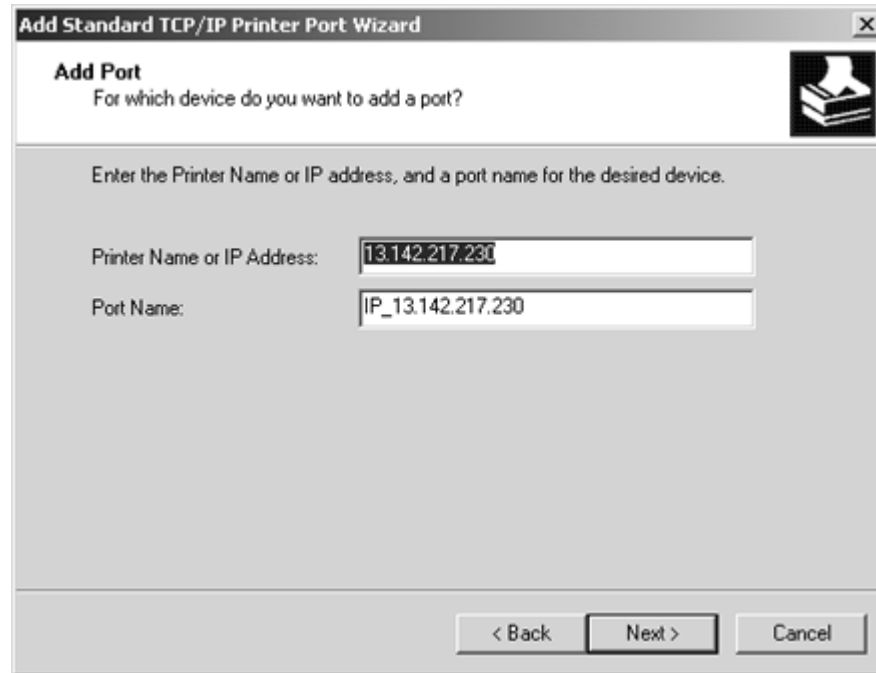
1. Perform steps 1-17 of the procedure *Installing the user software for parallel port printing* to install the printer driver.

When installation is complete, the Printers window is displayed with an icon for the newly installed printer.

2. Right-click the **DocuColor 2006** icon and select **Properties** to open the ppd window. Select the **Ports** tab to display the Printer Ports window.
3. Select **Standard TCP/IP Port** and **New Port** to start the Add Standard TCP/IP Printer Port Wizard.



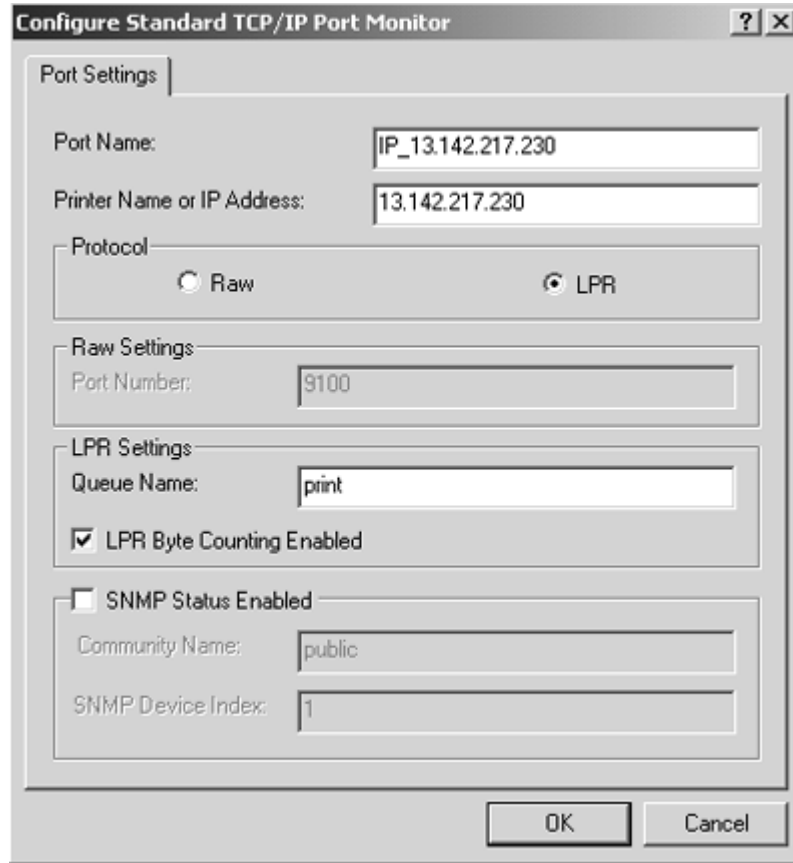
4. Select **Next** to display the Add Port screen.



5. Enter the **Printer Name** or **IP address**. When you enter the information, it is also displayed in the Port Name field. Select **Next** to display the Additional Port Information screen.
6. Select the **Custom** radio button and the **Settings** button. The Configure Standard TCP/IP Port Monitor screen is displayed.



7. Select the **LPR** radio button in the Protocol section to activate the LPR Settings fields.



8. Enter one of the names listed below in lowercase letters in the **Queue Name** field:
 - print (generally used)
 - hold
 - direct

9. Select the **LPR Byte Counting Enabled** checkbox.
10. Select **OK** to redisplay the Additional Port Information screen.
11. Select **Next** to display the wizard completion screen.
12. Select **Finish**. The Ports property tab shows the new port configuration.
13. Right-click the **printer** icon and select **Properties**.
14. To confirm the connection, print a Windows test page. Select the **General** tab. Select the **Print Test Page** button and **OK**.
15. Perform one of the following:
 - Select **OK** if the job printed normally.
 - Select the **Troubleshoot** button if the page did not print or did not print correctly. Follow the Troubleshooting wizard to diagnose and solve the problem.
16. Select **Close** to exit the Printer Properties dialog box.

Configure any options installed on your printer. Refer to the section *Setting the printer options*.

After setup is complete, you are ready to print your jobs.

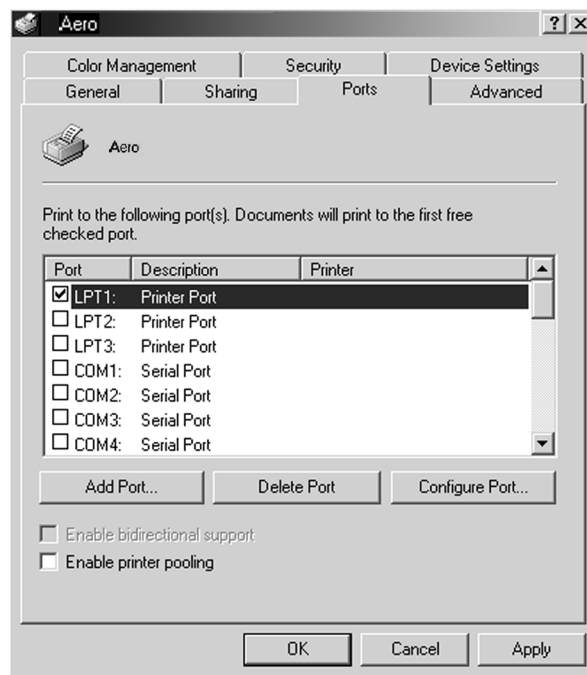
Installing TCP/IP and LPR printing (upgrade installation of Windows NT 4.0 to Windows 2000)

Before you continue, print a configuration sheet at the printer to obtain the IP address assigned to the DocuColor 2006, as well as the Subnet mask and gateway address, if they are used.

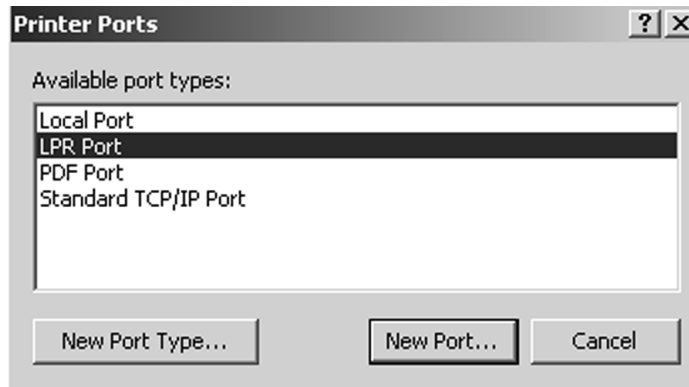
1. Perform steps 1-17 of the procedure *Installing the user software for parallel port printing* to install the printer driver.

When installation is complete, the Printers window is displayed with an icon for the newly installed printer.

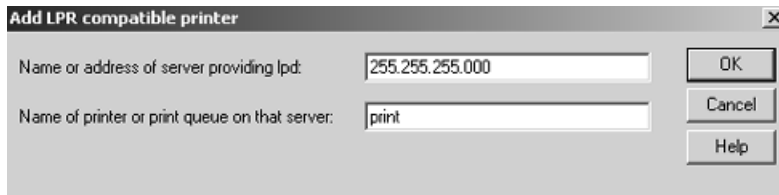
2. Right-click the **DocuColor 2006** icon and select **Properties** to open the ppd window. Select the **Ports** tab to display the Printer Ports window.
3. Ensure that you are connected to LPT1 and select the **Add Port** option to display a list of available ports.



4. Select the **LPR Port** option and select the **New Port** button.



5. In the **Name or address of server providing lpd** field, enter the Ethernet TCP/IP **IP address** or **Domain Name Services (DNS)** name assigned to the DocuColor 2006 printer.



6. In the **Name of Printer or print queue on that server** field, enter one of the names listed below in lowercase letters:
 - **print** (generally used)
 - **hold**
 - **direct**
7. Select **OK**. The workstation checks the address or DNS name that you entered and notifies you if it cannot resolve the address.
8. Select **Close** in the Printer Ports dialog box. The Ports property tab show the new port configuration.
9. To confirm the connection, print a test page. Select the **General** tab and select the **Print Test Page** button.

When you print, your files are transmitted over the LPR Port connection to the printer. With setup complete, you are ready to print your jobs.

10. Select **Close** to exit the Printer Properties dialog box.

Installing the user software for IPX/SPX printing

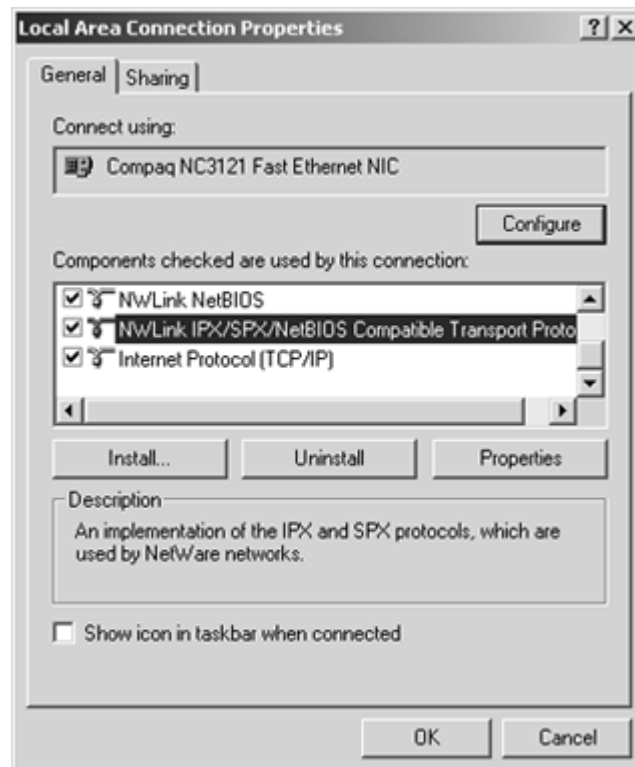
To print from Windows 2000 workstations over IPX (Novell), you must first set up IPX/SPX protocols, and then configure the printer by selecting the IPX port type and entering the settings for the port you use.

1. Select the **Start** button, **Settings**, and **Control Panel**.
2. Double-click the **Network and Dial Up** icon to display the Network and Dial-up Communications screen.
3. Double-click the **Local Area Connection** icon and select **Properties**.

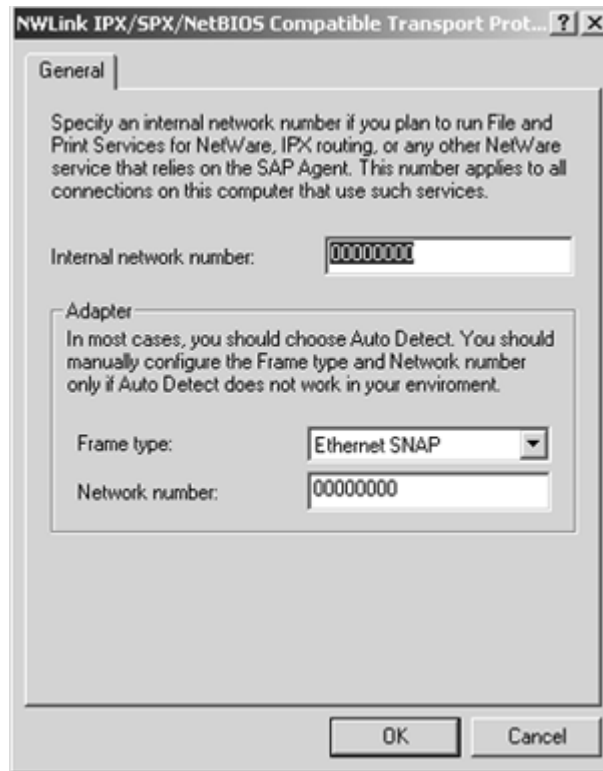
The Local Area Connection Properties screen is displayed.

Ensure that IPX/SPX-compatible Protocol is listed in the network components section. For additional information, refer to the Windows 2000 documentation.

4. Double-click the **NWLink IPX/SPX/NetBIOS Compatible Transport Protocol** icon.



5. Select the **Properties** button.

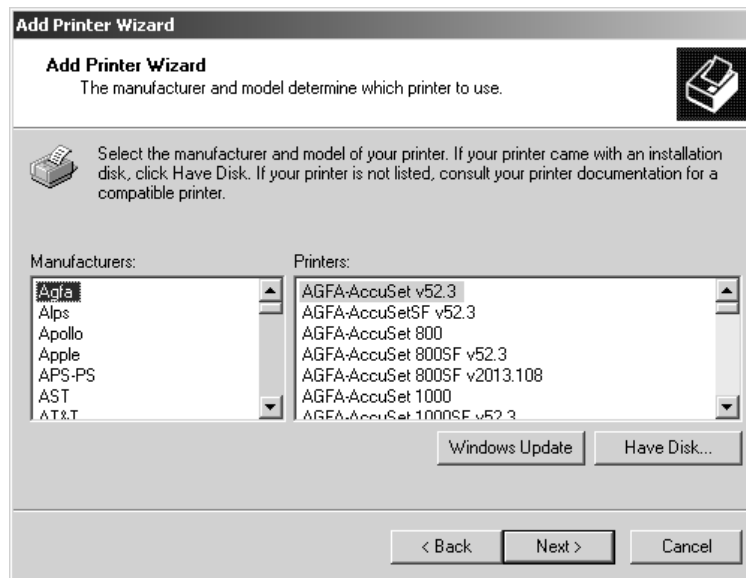


6. Select the **Frame type** option from the drop-down menu.
If necessary, print the Configuration page from the Printer Control Panel to check which Frame Type(s) are configured.
Do not select Auto because you may not be able to select the Frame Type specified on the DocuColor 2006.
7. Select **OK**.
8. Select **OK** to close the Local Area Connection Properties screen
9. Restart your workstation.
After your workstation reboots, ensure that your workstation is connected to the Novell Network servers required for your configuration.

10. Select the **Start** button, **Settings**, and **Printers**.
11. Double-click the **Add Printer** icon to display the Add Printer Wizard and select **Next**.
12. Select the **Network printer** radio button and **Next**.
13. Perform one of the following:
 - Enter the Printer Name.
 - Select Next and browse for the printer. For NetWare file servers, double-click the icon of the server to use for printing to the DocuColor 2006. Double-click the printer icon labeled with the NetWare print queue you will use.

A message is displayed indicating that you do not have the correct printer driver.

14. Select **OK**.
15. In the dialog box displaying lists of manufacturers and printers, select **Have Disk**.

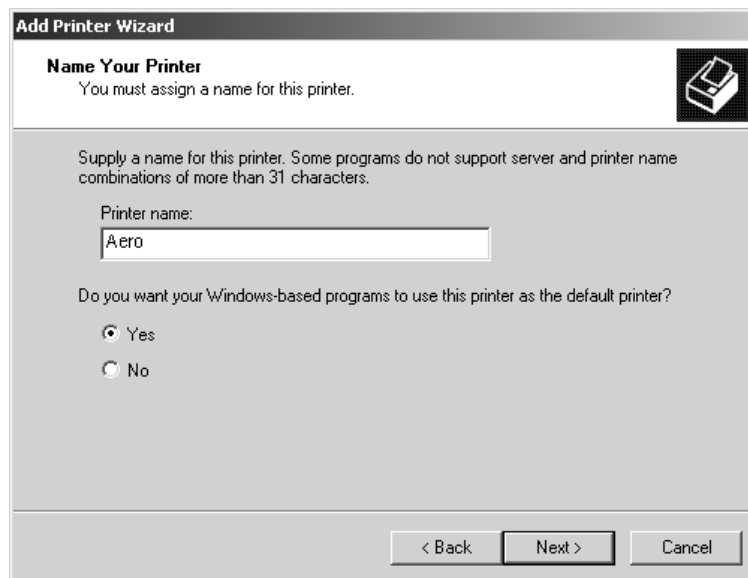


16. Insert the CD in the CD-ROM drive, select the CD-ROM drive (for example, D:\) from the drop-down box and select **Browse**.
The Install From Disk dialog box prompts you for the disk.

17. Browse to the **English\Prntdrv\Ps_drvr\Win_2000** folder and ensure that **oemsetup.inf** or **oemsetup** is selected.
18. Select **Open**.
The path is copied to the Install from Disk dialog box.
19. Verify the path is correct and select **OK**.
20. In the Printers box, select the **Xerox DocuColor 2006** option and select **Next**.
21. Using a maximum of 31 characters, enter a **name** for the printer or leave the default name in the Printer Name box.



Entering more than 31 characters may cause printing problems with some network applications.



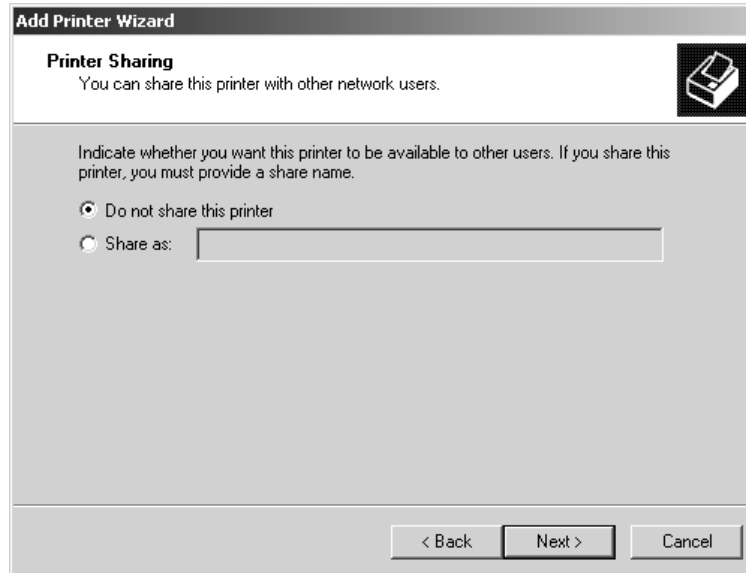
The screenshot shows the 'Add Printer Wizard' dialog box, specifically the 'Name Your Printer' step. The title bar reads 'Add Printer Wizard'. Below the title bar, the text says 'Name Your Printer' and 'You must assign a name for this printer.' There is a printer icon in the top right corner. The main area contains the instruction: 'Supply a name for this printer. Some programs do not support server and printer name combinations of more than 31 characters.' Below this is a text box labeled 'Printer name:' containing the text 'Aero'. Underneath the text box is the question 'Do you want your Windows-based programs to use this printer as the default printer?' with two radio buttons: 'Yes' (which is selected) and 'No'. At the bottom of the dialog box are three buttons: '< Back', 'Next >', and 'Cancel'.

22. If you want the DocuColor 2006 to be the default printer, select the **Yes** radio button; if not, select **No**. Select **Next**.

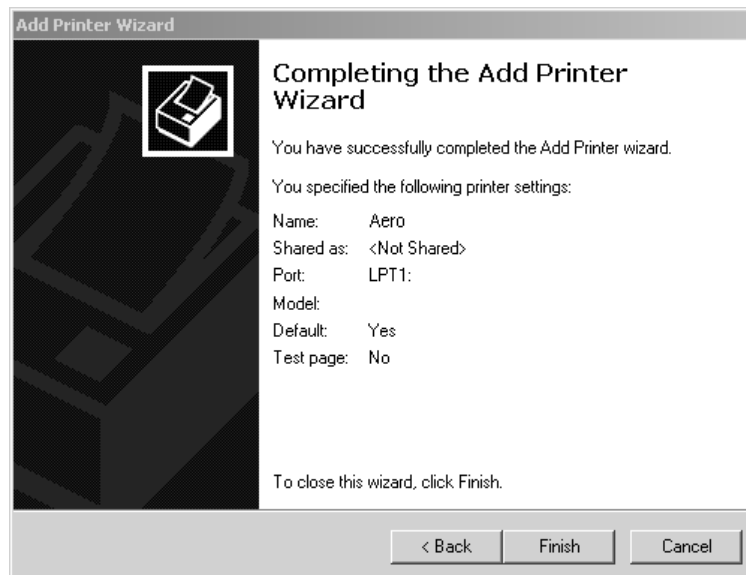
23. Indicate whether you want the printer installed as a shared printer.

If you select Share as, you must also enter a Share Name for the printer (or leave the default name) and make selections from the list of operating systems used by client workstations.

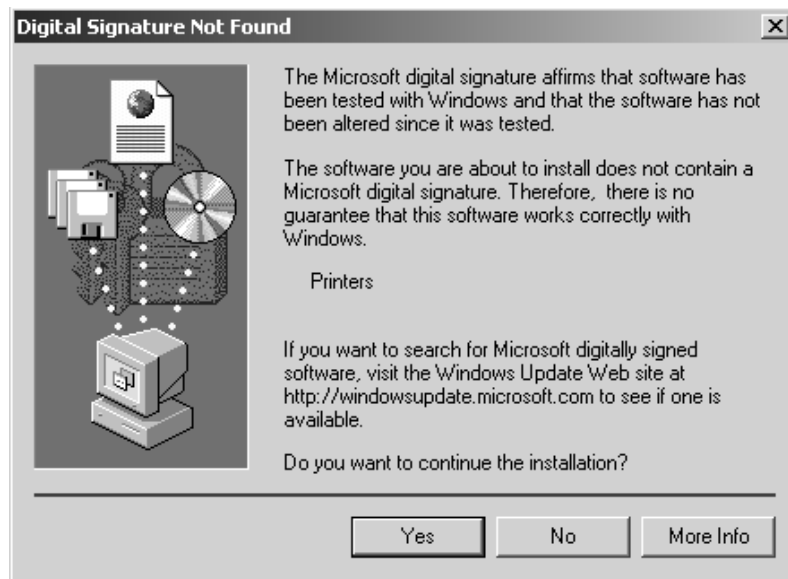
Select **Next**.



24. Select the **No** button to printing a test page and select **Next**.
25. Verify the printer settings specified, and select **Finish**.



The Digital Signature Not Found window indicates that the printer driver for Windows 2000 does not have a Microsoft digital signature. However, printing is processed correctly.



26. Select the **Yes** button.



*If this is the first printer driver you are installing on the computer, you are prompted to install additional files from the Windows 2000 CD. Insert it into the CD-ROM drive, browse to the i386 folder, and then select **OK**.*

When installation is complete, the Printers window is displayed with an icon for the newly installed printer.

27. Right-click the **printer** icon and select **Properties**.

28. Select the **Advanced** tab to display Spool Settings.

29. Select either the **Spool print jobs so program finishes printing faster** option or the **Print directly to the printer** option. The selection you make depends on the action you took in step 3:
 - If you set the Port Timeout in Seconds to 10, you can select either option; however, spooling is faster.
 - If you set the Port Timeout in Seconds to 5, select the **Print directly to the printer** option.
30. To confirm the connection, print a test page. Select the **General** tab in the Properties dialog box. Select the **Print Test Page** button.
31. Perform one of the following:
 - Select **OK** if the job printed normally.
 - Select the **Troubleshoot** button if the page did not print or did not print correctly. Follow the Troubleshooting wizard to diagnose and solve the problem.
32. Select **Close** to exit the Printer Properties dialog box.

Configure any options installed on your printer. Refer to the section *Setting the printer options*.

After setup is complete, you are ready to print your jobs.

Installing the user software for SPM printing

Standard Port Monitor (SPM) printing offers an alternative to LPR ports when you want to send jobs to network printers over TCP/IP. SPM is installed by default when TCP/IP is installed in Windows 2000.

SPM is more robust than LPR because it uses Simple Network Management Protocol (SNMP) to read the configuration of the target printer and determine its status. If SPM cannot configure the target printer using SPM default TCP ports and SNMP, it uses the LPR protocol, if this protocol is provided by the printer. However, the installation will still be as an SPM port.

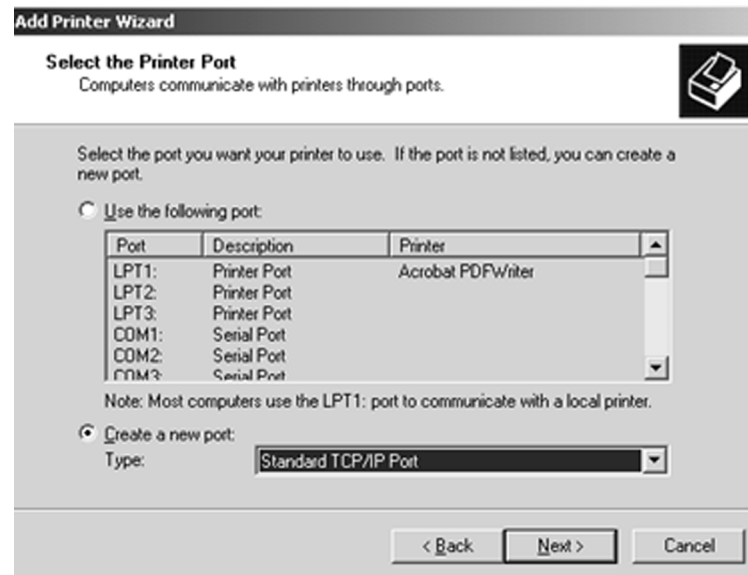
Unlike LPR, SPM uses port 9100 as the default destination port and randomly selects any open source port greater than 1023 as the source port.

Before you continue, print a configuration sheet at the printer to obtain the IP address assigned to the DocuColor 2006, as well as the Subnet mask and gateway address, if they are used.

1. Perform steps 1-17 of the procedure *Installing the user software for parallel port printing* to install the printer driver.

When installation is complete, the Printers window is displayed with an icon for the newly installed printer.

2. Double-click the **Add Printer** icon to display the Add Printer Wizard and select **Next**.



3. Select the **Create new port** radio button.
4. Select the **TCP/IP Port** option.
The TCP/IP Printer Port wizard is displayed.
5. Select **Next**.
6. Enter the **Printer Name** or **IP address**. When you enter the information, it is also displayed in the Port Name field. Select **Next** to display the Additional Port Information.
7. Select the **Custom** radio button and the **Settings** button.
The Configure Standard TCP/IP Port Monitor screen is displayed.
8. Select the **LPR** radio button in the Protocol section to activate the LPR Settings fields.
9. Enter one of the names listed below in lowercase letters in the **Queue Name** field:
 - print (generally used)
 - hold
 - direct
10. Select the **SNMP Status Enabled** checkbox.
11. Select **OK** to redisplay the Additional Port Information screen.
12. Select **Next** to display the wizard completion screen.
13. Select **Finish**. The Ports property tab shows the new port configuration.
The SPM searches for the printer and configures the printer, based on the SNMP responses.
14. To confirm the connection, print a test page. Select the **General** tab and select the **Print Test Page** button.
When you print, your files are transmitted over the SNMP connection to the printer. With setup complete, you are ready to print your jobs.

Installing the user software for SMB printing

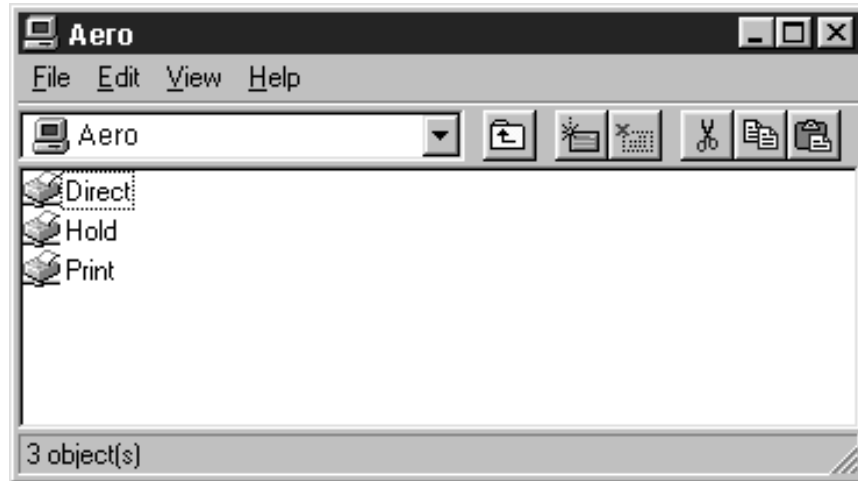
Use SMB or WINS printing if you do not have a Novell network. Printing by this method enables printing from a workstation to a particular print connection (hold, print, or direct) on the DocuColor 2006. The following procedure assumes you have the TCP/IP protocol and Client for Microsoft Networks installed.

To set up printing to a second or third print connection, repeat this procedure for each and assign each printer a unique descriptive name during the printer driver installation for subsequent identification purposes.

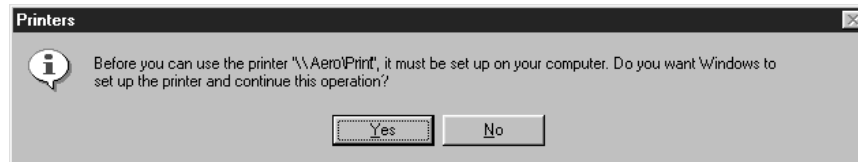
1. If the system administrator has not already done so, go to the printer and configure the DocuColor 2006 for SMB printing. Specify whether to install the PostScript or PCL driver. Refer to the chapter *Performing the setup from the Printer Control Panel*.
2. At the workstation, double-click the **My Network Places** icon to display your network environment.



3. Double-click the **Computers Near Me** icon.
4. Browse for the **printer**. Refer to the Configuration page for this information. If you cannot locate your DocuColor 2006, see your system administrator.
5. Double-click the **name** of the printer to display enabled print connections.



6. Double-click the **name** of the desired printer connection.
The Printers dialog box is displayed, asking whether you would like to set up the printer.

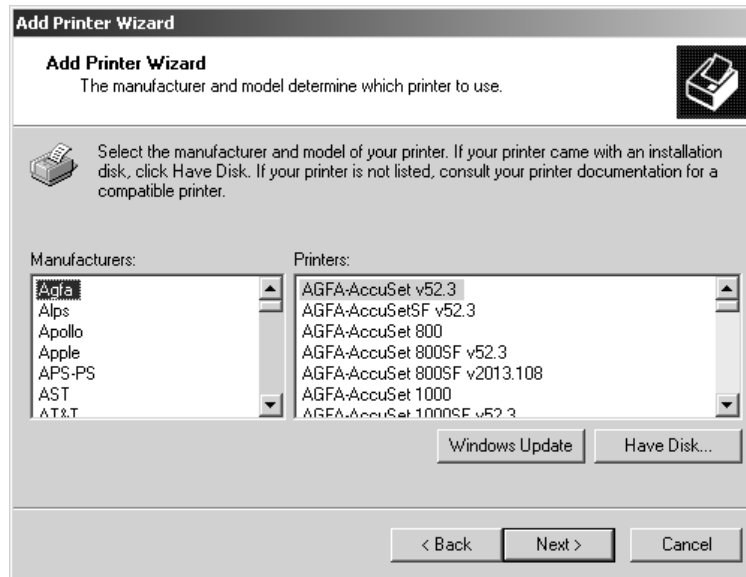


7. Select **Yes** to install the PostScript or PCL printer driver and printer description file for the selected connection.

Depending on the Point and Print Drivers option specified in Network Setup, the PostScript or the PCL printer driver and printer driver files are automatically installed.

The Add Printer Wizard is displayed.

8. In the dialog box displaying lists of manufacturers and printers, select **Have Disk**.



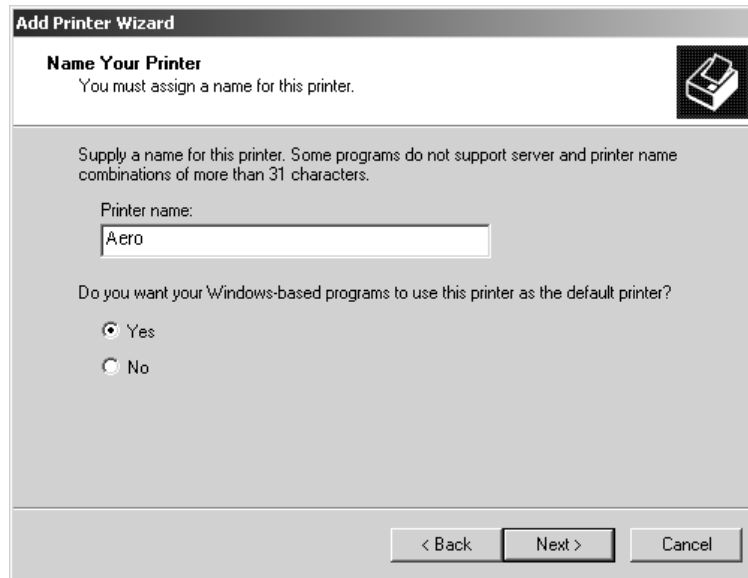
9. Insert the CD in the CD-ROM drive, select the CD-ROM drive (for example, D:\) from the drop-down box and select **Browse**.
The Install From Disk dialog box prompts you for the disk.
10. Browse to the **English\Prntdrv\Ps_drvr\Win_2000** folder and ensure that **oemsetup.inf** or **oemsetup** is selected.
11. Select **Open**.

The path is copied to the Install from Disk dialog box.

12. Verify the path is correct and select **OK**.
13. In the Printers box, select the **Xerox DocuColor 2006** option and select **Next**.
14. Using a maximum of 31 characters, enter a **name** for the printer or leave the default name in the Printer Name box.



Entering more than 31 characters may cause printing problems with some network applications.



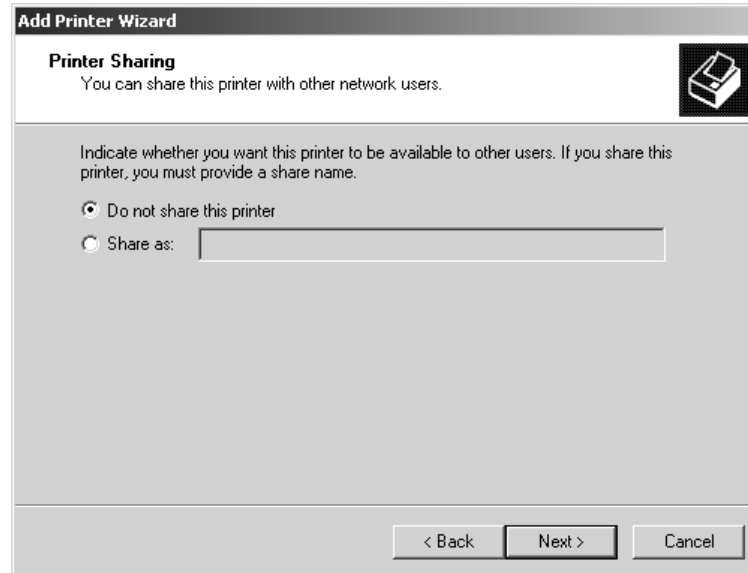
The screenshot shows the 'Add Printer Wizard' dialog box, specifically the 'Name Your Printer' step. The title bar reads 'Add Printer Wizard'. Below the title bar, the text says 'Name Your Printer' and 'You must assign a name for this printer.' To the right of this text is a printer icon. Below this, a message states: 'Supply a name for this printer. Some programs do not support server and printer name combinations of more than 31 characters.' There is a text input field labeled 'Printer name:' containing the text 'Aero'. Below the input field, there is a question: 'Do you want your Windows-based programs to use this printer as the default printer?' with two radio buttons: 'Yes' (which is selected) and 'No'. At the bottom of the dialog box, there are three buttons: '< Back', 'Next >', and 'Cancel'.

15. If you want the DocuColor 2006 to be the default printer, select the **Yes** radio button; if not, select **No**. Select **Next**.

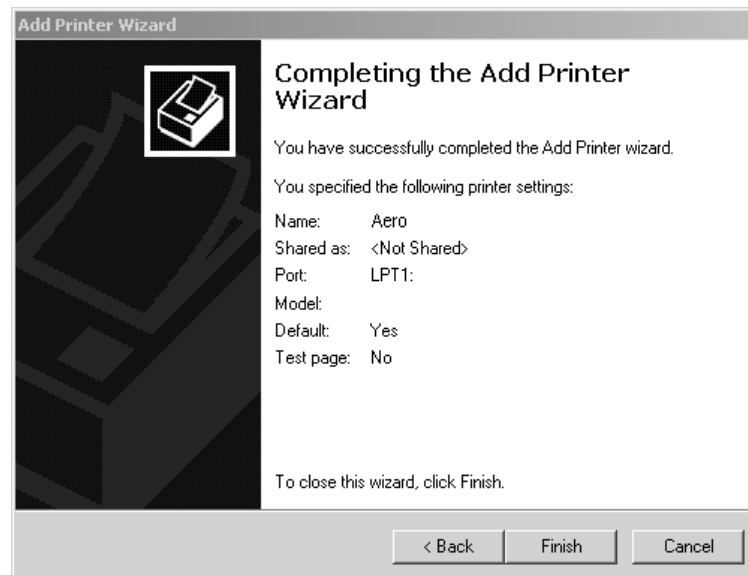
16. Indicate whether you want the printer installed as a shared printer.

If you select Share as, you must also enter a Share Name for the printer (or leave the default name) and make selections from the list of operating systems used by client workstations.

Select **Next**.



17. Select the **No** button to printing a test page and select **Next**.
18. Verify the printer settings specified, and select **Finish**.



The Digital Signature Not Found window indicates that the printer driver for Windows 2000 does not have a Microsoft digital signature. However, printing is processed correctly.



19. Select the **Yes** button.



*If this is the first printer driver you are installing on the computer, you are prompted to install additional files from the Windows 2000 CD. Insert it into the CD-ROM drive, browse to the i386 folder, and then select **OK**.*

When installation is complete, the Printers window is displayed with an icon for the newly installed printer.

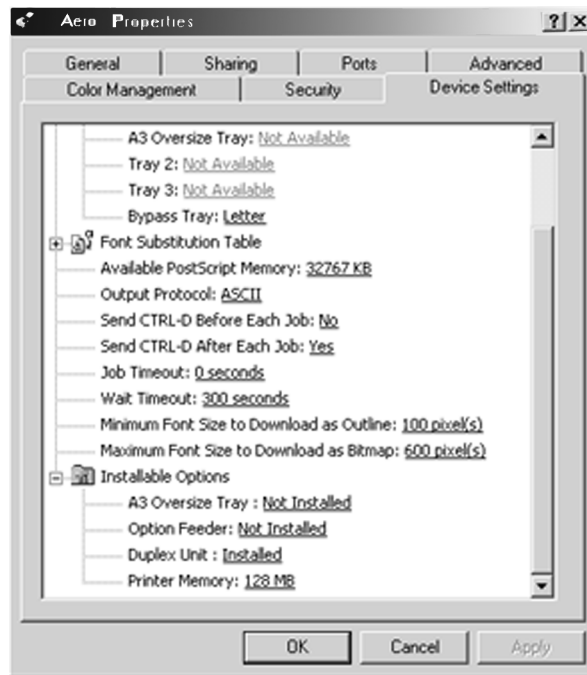
20. Right-click the **printer** icon and select **Properties**.
21. To confirm the connection, print a Windows test page. Select the **General** tab. Select the **Print Test Page** button and **OK**.

You are now ready to print from your applications through the SMB connection.

Configure any options installed on your printer. Refer to the section *Setting the printer options*.

Setting printer options

1. Select the **Start** button, **Settings**, and **Printers**.
2. Right-click the **DocuColor 2006** icon and select **Properties**.
3. Select the **Device Settings** tab, and scroll to the **Installable Options** option.



4. Specify the options installed on the printer. Select an installable option and select the setting of **Installed** or **Not Installed**.

- **A3 Oversize Tray**
- **Optional Feeder**
- **Duplex Unit**

For the **Printer Memory** option, select the amount of memory installed in the printer: **64, 128, 192, 256, 320, 384** or **512 MB**.

5. Select **Apply** to activate the current settings, and then select **OK**.

Installing additional software for Windows 2000

You can copy additional color files from the User Software CD to your hard disk. Many of the files are PostScript files that you can download and print using WebDownloader.

- **ICM folder**—ICM monitor setting file and device profiles specially designed for use with the Fiery and particular copier models.
- **Clrfiles folder** (inside English folder)—Cmyk.ps, an 11-page, letter-size PostScript file to use for reference when defining CMYK colors in applications. Pantone.ps, a 19-page, letter-size PostScript file that indicates the closest equivalent of PANTONE coated colors that the Fiery and your particular printer can produce. The method used to print the Pantone.ps file differs depending on the Spot Color Matching setting.

You can print Rgb_01.doc from Microsoft Word 97 or later to view RGB colors. You can print Rgb_02.ppt from PowerPoint 6.0 or later to view available RGB colors.

- **Calibrat folder** (inside English/Clrfiles folder)—Four PostScript measurements files of color patches: Custom21.ps, Custom34.ps, Stand21.ps, and Stand34.ps. The numbers in the file names refer to the number of patches on the page. The Custom files are provided to enable you to download measurement patches that incorporate the current calibration set of the printer. The Standard files are provided to enable you to download standard measurement patches that ignore the current calibration set for the printer.



These files are provided for expert users and should not be used for day-to-day calibration.

Copying printer description files

The User Software CD contains printer description files for popular Windows applications. Pagemaker 5.0, 6.0, and 6.5 do not support automatic installation of printer description files from the Printer Control Panel. To make the Fiery available in the Print and Page Setup dialog boxes of this application, copy printer description files to the appropriate location.

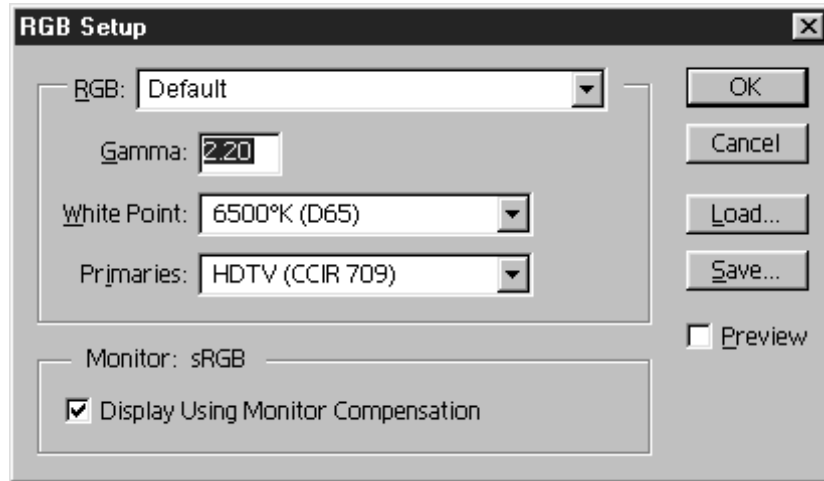
1. Insert the User Software CD in your CD-ROM drive. Open the **English\Prntdrv** folder.
2. Copy the printer description file for your Fiery to the appropriate location. For PageMaker 5.0 or later, copy the EF3X1D10.ppd to one of the following locations:
 - For PageMaker 5.0--\ALDUS\USEENGLISH\PPD4
 - For PageMaker 6.0--\PM6\RSRC\USEENGLISH\PPD4
 - For PageMaker 6.5--\ PM65\RSRC \USEENGLISH\PPD4

Installing the ICM profile

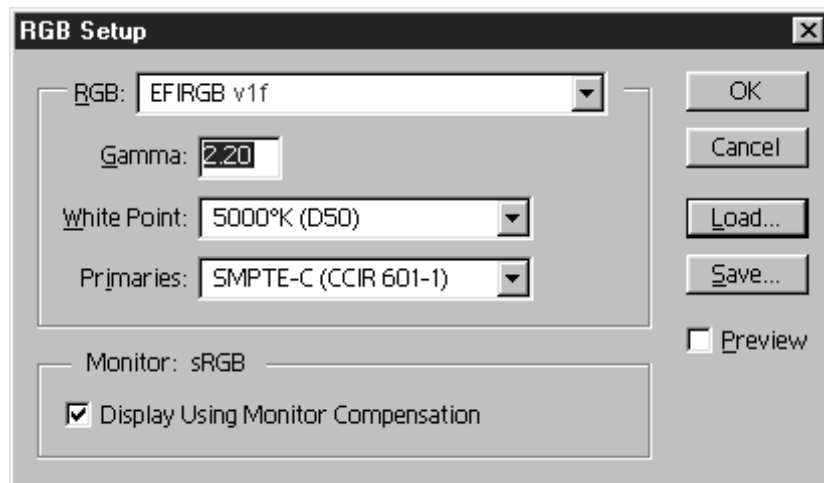
The Image Color Matching (ICM) profiles included in the lcm folder on the User Software CD are for use with ColorWise ProTools. They can also be used with applications that support ICC standards. For most ICC aware applications, the files must be installed into a folder named Color in the System folder. For use with ColorWise Pro Tools, the files can be copied to a folder of your choice.

Loading the working space profile using Photoshop 5.0

1. Launch **Photoshop**.
2. From the **File** menu, select **Color Settings** and **RGB Setup**.
3. In the RGB Setup dialog box, select the **Load** button.



4. Browse to the Windows\System\Color folder. Select the **Efrgb v1f** file and the **Load** button.



5. Select **OK**.

For more information about ICM profiles, refer to the application documentation.

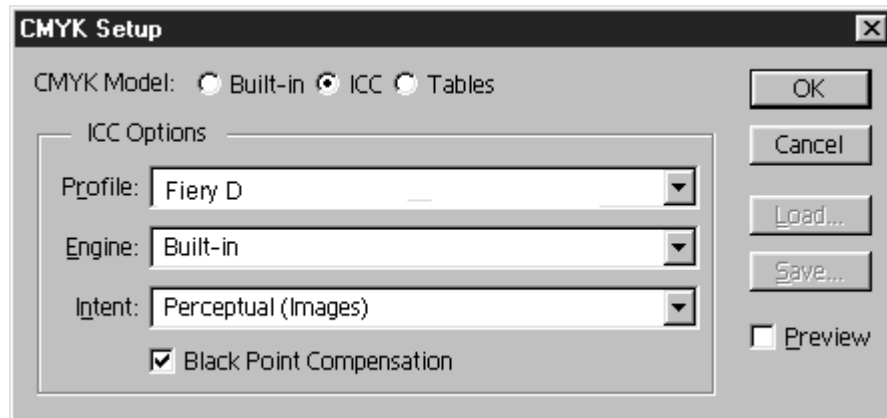
Loading the ICM profile

The ICM printer profile enables RGB-to-CMYK conversions that are specific to the printer you are using. The following procedure assumes that you have installed the ICM profiles included on the User Software CD.



The internal name of an ICM profile may vary slightly from its file name.

1. Launch **Photoshop**.
2. From the **File** menu, select **Color Settings** and **CMYK Setup**.
3. In the CMYK Setup dialog box, select the **ICC** radio button as the CMYK Model.
4. Select the profile that corresponds to the printer or the device you would like to simulate from the Profile drop-down menu.



5. Select **OK**.