

# 14

## Printing from the Windows workstations

Use the following instructions to set up options and print from one of the following operating systems:

- Windows 95
- Windows 98
- Windows 2000
- Windows NT 4.0

For more information, refer to the chapter *Print options*.



*Your screens may vary from those illustrated in this chapter.*

This chapter describes printing to the DocuColor 2006 from Windows 95/98, Windows 2000, and Windows NT 4.0. You can print from a networked Windows computer, a computer using Windows (WINS) printing, or a Windows computer connected to the parallel port on the printer. If you plan to print files at another location, follow the procedures described in the section *Saving files to print at a remote location* in this chapter.

Another way to print from a Windows computer is to download PCL, PostScript, Encapsulated PostScript (EPS), or Portable Document Format (PDF) files using WebDownloader. Basic instructions are provided at the end of this chapter.



*For information on connecting to the printer over the network, installing printer drivers, and installing the Fiery utilities, refer to the appropriate Windows installation chapter.*

## Printing from applications

---

Once you have installed the DocuColor 2006 printer driver and set it to the proper port, you can print directly from most Windows applications. Simply select the **Print** command from within your application.

### Setting options and printing with Windows 95/98 and Windows 2000

---

To print from Windows 95/98 and Windows 2000, use either the Adobe PostScript printer driver or the PCL printer driver for Windows 95/98 or Windows 2000. Both drivers are included with the DocuColor 2006 user software.

Once you have installed the printer drivers and PDD files, you can specify print settings for a particular job and print it

To print from Windows 95/98 or Windows 2000 applications by connecting your computer to a print server via the network, one of the following is required: a NetWare server, a Windows NT server, or a UNIX server. Refer to the illustrations in the chapter *Connecting to the network*.

To print from Windows 95/98 or Windows 2000 applications without connecting to a print server, you can use SMB printing. Refer to the appropriate chapter *Installing user software* for your system.

The procedures for setting options and printing are different depending on which printer driver (PCL or PostScript) you use. Ensure that you are using the correct procedures for your needs.

## **Configuring the PostScript print options for Windows 95/98**

1. Select **Print** from your application to display a Print dialog box.
2. Ensure the **DocuColor 2006** is selected in the printer Name field and select the **Properties** button.
3. Select the **Paper Source** print option bar.
  - a. In the **Page Size** area, specify the paper size for the job.
  - b. In the **Paper Source** area, select the paper tray for the job.
  - c. In the **Media Type** area, select the type of media to use for the job.

For more information on these and other print options, refer to the chapter *Print options*.



*If paper loaded in the selected tray is a different size, orientation, and/or media type than that of the job you are sending, the printer displays an error message and the job might not print. Load the correct paper in the selected tray or cancel the job.*

4. Select the **Layout, Watermarks, ColorWise, Image Quality, and Finishing** print option bars to specify the appropriate settings for the print job.

These print options are specific to the server and the printer. They override settings specified in Printer Setup, but can be overridden from the Fiery WebSpooler. For more information, refer to the chapter *Print options*.

If you select **Default Settings** in the Saved Settings drop-down menu, the job prints according to the settings entered during setup, the current default settings. Refer to the chapter *Print options*.

Some options can also be set from an application (for example, Reverse Page Order or Collation). In these cases, use the driver option to perform the function, rather than setting it from the application. The application may not set up the file properly for printing on the DocuColor 2006 and may also take longer to process.



*If you specify incompatible print settings, the Conflict dialog box may be displayed. Follow the on-screen instructions to resolve the conflict.*

5. To use the new settings as default settings for this workstation, select **Apply**.

Refer to the section *Using saved settings* in this chapter for more information about saved settings.

6. Select **OK** to close the properties window.
7. Select **OK** or **Close** to exit the print window.

## Configuring the PCL print options for Windows 95/98

1. Select **Start, Settings, and Printers**.
2. Select the **Xerox DocuColor 2006 PCL** printer icon and select **Properties** from the File menu. The Printer PCL5 Properties dialog box displays.
3. Select the **Fiery Printing** tab.  
This tab serves as the control center for all frequently used printing functions.
4. Select the **Paper Source** print option bar.
  - a. In the **Page Size** area, specify the paper size for the job.
  - b. In the **Paper Source** area, select the paper tray for the job.
  - c. In the **Media Type** area, select the type of media to use for the job.

For more information on these and other print options, refer to the chapter *Print options*.



*If paper loaded in the selected tray is a different size, orientation, and/or media type than that of the job you are sending, the printer displays an error message and the job might not print. Load the correct paper in the selected tray or cancel the job.*

5. Select the **Layout, Colorwise** and **Image Quality** print option bars to specify the appropriate settings for the print job.

These print options are specific to the server and the printer. They override settings specified in Printer Setup, but can be overridden from the Fiery WebSpooler. For more information, refer to the chapter *Print options*.

If you select **Default Settings** in the Saved Settings drop-down menu, the job prints according to the settings entered during setup, the current default settings. Refer to the chapter *Print options*.

Some options can also be set from an application (for example, Reverse Page Order or Collation). In these cases, use the driver option to perform the function, rather than setting it from the application. The application may not set up the file properly for printing on the DocuColor 2006 and may also take longer to process.



*If you specify incompatible print settings, the Conflict dialog box may be displayed. Follow the on-screen instructions to resolve the conflict.*

6. To use the new settings as default settings for this workstation, select **Apply**.
7. To save the settings, select the **Save current setting** button (the icon resembles a floppy disk). Enter a **name** for the setting in the Save Setting box and select **OK**. This saves the settings for use at another time.
8. To delete a group of settings, select the **Save and manage list of settings** button (the icon resembles a list). Select the desired **setting name**, select the **Delete** button, and **OK**.
9. To import settings from another DocuColor 2006 job, select the **Save and manage list of settings** button. Browse for the desired **settings** with the extension of **.sav** and select **OK**.
10. To export settings to another DocuColor 2006 job, select the **Save and manage list of settings** button. Browse for the desired **job** and select **OK**.  
This action retains the settings.
11. Select **OK** to close the properties window.
12. Select **OK** or **Close** to exit the print window.

## Setting options and printing from Windows 2000

---

After you have installed the Windows 2000 PostScript printer driver and PPD file, specify print settings for a particular job and print it.



*PCL printing is not supported for Windows 2000.*

*You can install and use the PCL drivers and PDD files provided on the User Software CD to print from Windows 95/98 and Windows NT 4.0 systems. Refer to the appropriate **Installing user software** chapters and **Printing from Windows workstations** for information on installing and printing with the Windows 95/98 and Windows NT 4.0 drivers.*

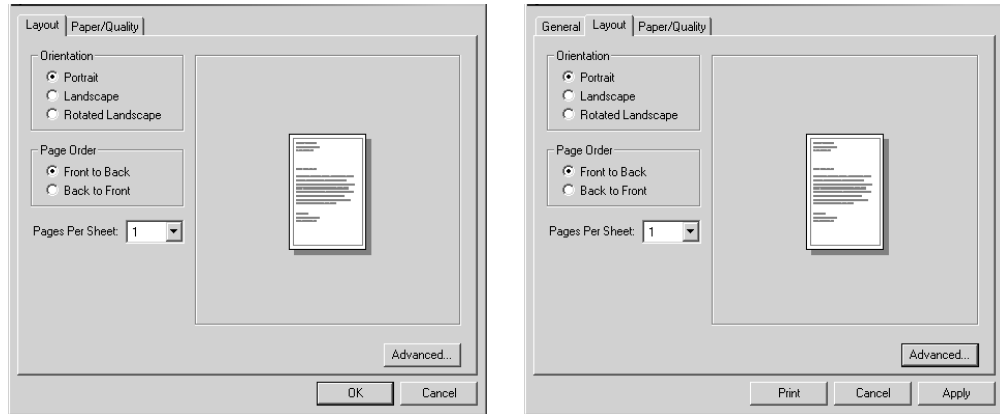
To set print options and print from Windows 2000 using the PostScript printer driver:

1. Select **Print** in your application.
2. Select the **DocuColor 2006**, then set print options for the job by selecting **Properties** (if necessary) and the print option tabs.
3. Select the **Advanced** button on the Layout or Paper/Quality tab to display the Advanced Options dialog box.
4. Select a setting from the **Paper Size** drop-down list menu.
5. Scroll to Printer Features and select the appropriate settings for the print job.

As you select print options, incompatible print settings are displayed with a caution icon next to their names. If you specify incompatible print settings the Incompatible Print Settings dialog box is displayed. Follow the on-screen instructions to resolve the conflict.

6. Select **OK**.

Depending on the application, you will see one of two dialog boxes.



7. Select **OK**, then **OK** again to print; or, if the **Print** button is available, select **Print**.

The job prints with the specified settings.



## Using saved settings (Windows 95/98 and Windows NT 4.0)

Print option settings can be saved on your hard disk so you can easily load specifically configured settings for a particular job. Settings files can also be shared over a network, using the Import and Export features.

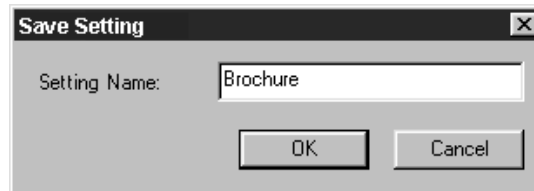


*Although the user interface differs slightly, the following procedures are the same for both PostScript and PCL drivers, in Windows 95/98 and Windows NT 4.0. The following examples show the Windows 95/98 PostScript driver.*

*This feature is not supported by Windows 2000.*

### Creating Saved Settings

1. Ensure that the **Default Settings** are displayed in the Saved Settings drop-down list.  
As soon as you change any settings, the Saved Settings menu displays **Untitled** instead of **Default Settings**.
2. Select the **Save current setting** button (the disk icon).
3. Enter a **Settings Name** and select **OK**.



### Loading Saved Settings

1. Ensure that the **Default Settings** are displayed in the Saved Settings drop-down list.
2. Select the **settings** you want to use.  
The options are automatically configured with the saved settings.

### Deleting Saved Settings

---

1. From the Fiery Printing tab, select the **Save and manage list of settings** button.
2. Select the settings you want to delete and select **Delete**.
3. Select **Yes** to confirm the deletion and **OK**.

### Modifying Saved Settings

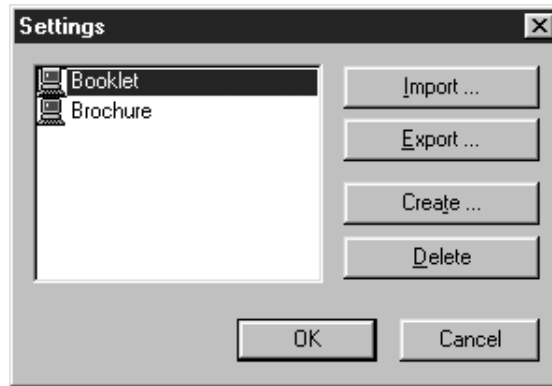
---

1. From the Fiery Printing tab, select the **Saved Settings** drop-down list.
2. Select the settings you want to modify.  
The options are automatically configured with the saved settings.
3. Configure your new **settings** from the print option bars, then select the **Save current setting** button.
4. Select **OK** to save the modified settings.

## Exporting Saved Settings

---

1. From the Fiery Printing tab, select the **Save and manage list of settings** button.
2. Select the Saved Settings you want to export and select **Export**.



3. Browse to the location in which to save the file, enter a **file name** and select **OK**.



*The file name must include the .sav extension and can be up to eight characters long (not including the extension). The file name does not have to match the Settings name.*

4. Select **OK** in the Settings dialog box.

## Importing Saved Settings

---

1. From the Fiery Printing tab, select the **Save and manage list of settings** button.
2. Select the **Import** button.
3. Browse to the location in which the file is saved. Select the file and **OK**.
4. Select **OK** in the Settings dialog box.



*When you import saved settings, they are displayed in the Saved Settings menu under their Settings Name, not the file name. For example, the file named present.sav would be imported, but it would be displayed in the Saved Settings menu as Presentation (Settings Name).*

## Using Shortcuts

---

The Shortcuts section of the driver interface displays the current settings for some of the most common print options. You can access and change these settings quickly and easily using the Shortcuts. You can also access some page layout and finishing options by selecting the Finishing tab, then right-clicking the image of the page directly below Shortcuts (PostScript drivers only).



*Although the user interface differs slightly, the following procedures are the same for both PostScript and PCL drivers, in Windows 95/98, Windows 2000, and Windows NT 4.0.*

### Setting print options using Shortcuts

---

1. From the Fiery Printing tab, place your cursor over the print option you want to set.  
When your cursor is directly over the print option name, the cursor turns into a hand and the option name is underlined.
2. Select the **print option** and specify the appropriate settings.  
Alternatively, right-click the print option and specify the settings directly.
3. Select **Apply** to make the new settings the default.
4. Select **OK**.

### Setting print options using Page Shortcuts

---

1. From the Fiery Printing tab, select the **Finishing** tab, then place your cursor over the page image and right-click.



*Page shortcuts are only available from the PostScript drivers.*

2. Specify the appropriate settings for the print options.
3. Select **Apply** to make the new settings the default.
4. Select **OK**.

## Working with custom page sizes in Windows 95/98 or Windows 2000

---

With custom page sizes, define the page dimensions and the unprintable area of the page. You can save three different custom page sizes for use any time you print.



*Custom page sizes are not available from Windows NT 4.0. Although the user interface differs slightly, the following procedures are the same for both PostScript and PCL drivers for Windows 95/98 and Windows 2000. The following examples show the Windows 95/98 PostScript driver.*

### Defining a custom page size

---

1. Select **Print** from your application.
2. Select the **Fiery Printing** tab.
3. Select the **Paper Source** print option bar.
4. Select the **Custom** button.
5. Enter the name and the dimensions of the page. Select any other options that are applicable to the custom page, then select **OK**.

The new custom page name is displayed in the Page Size drop-down list.

6. Select **OK**.

After you define a custom page size, you can use it from within an application, without having to redefine it each time you print.

## Printing a custom page size

---

1. Select **Print** in your application.
2. Ensure the **Xerox DocuColor 2006** is selected as the printer, then select Properties from the File menu.
3. Select the **Fiery Printing** tab.
4. Select the **Paper Source** print option bar.
5. Select the custom page size from the Page Size drop-down list.
6. Select **OK**.
7. Select **OK** again to print the job.

## **Saving files to print at a remote location**

---

If you do not have a DocuColor 2006 and are preparing final files to take to a service bureau or other location, select the **Print to file checkbox** and **OK. Save** the file to the appropriate location. For more information about printing to a file, refer to your Windows or application documentation.

You can also print to the File port to create a file to download using WebDownloader.

## **Setting print options for a job with Windows NT 4.0**

---

You can print from Windows NT 4.0 using the Adobe PostScript printer driver or PCL printer driver, both of which are included on the User Software CD.

Once you have installed the Adobe PostScript printer driver and PPD file or the PCL printer driver and PDD file, you can specify print options.

The procedures for setting options and printing are different depending on which printer driver you use.

With the Adobe PostScript printer driver, you can set options on a job-by-job basis or establish default settings for all jobs printed from your computer to the DocuColor 2006.

This section describes configuring print options for Windows NT 4.0 using the PostScript printer driver and the PCL printer driver.

Custom print options available from the PostScript and PCL printer drivers are described in the chapter *Print options*.

## **Setting print options for a PostScript job (Windows NT 4.0)**

---

1. Select **Print** in your application.
2. Ensure that the **DocuColor 2006 PostScript** printer is selected and select **Properties** from the File menu.
3. Select the **Fiery Printing** tab.  
This tab serves as the control center for all frequently used printing functions.
4. Select the **Paper Source** print option bar.
  - a. In the **Page Size** area, specify the paper size for the job.
  - b. In the **Paper Source** area, select the paper tray for the job.
  - c. In the **Media Type** area, select the type of media to use for the job.

For more information on these and other print options, refer to the chapter *Print options*.



*If paper loaded in the selected tray is a different size, orientation, and/or media type than that of the job you are sending, the printer displays an error message and the job might not print. Load the correct paper in the selected tray or cancel the job.*



5. Select the **Layout**, **ColorWise**, **Image Quality**, and **Finishing** print option bars to specify the appropriate settings for the print job.

These print options are specific to the server and the printer. They override settings specified in Printer Setup, but can be overridden in the Fiery WebSpooler or Fiery Override Print Settings dialog box. For more information on these and other print options, refer to the chapter *Print options*.

If you select **Printer default**, the job prints according to the settings entered during Setup, or the default settings. Refer to the chapter *Print options*.



*Some options can also be set from an application (for example, Reverse Page Order or Collation). In these cases, use the driver option to perform the function, rather than setting it from the application. The application may not set up the file properly for printing on the DocuColor 2006 and may also take longer to process.*

6. Select **OK**.
7. Select **OK** again to close the Print dialog box.

## Setting print options for all PostScript jobs (Windows NT 4.0)

---

1. Select **Start, Settings, and Printers**.
2. Right-click to select the **Xerox DocuColor 2006 PCL** printer icon and select **Document Defaults**.
3. Select the **Fiery Printing** tab.
4. Specify the appropriate default settings for all print jobs as described in the previous procedure.
5. Select **OK**.

With the PCL printer driver, you can set options on a job-by-job basis or establish default settings for all jobs printed from your workstation to the DocuColor 2006.

## Setting print options for a PCL job (Windows NT 4.0)

---

1. Select **Print** in your application.
2. Select the **Xerox DocuColor 2006 PCL** printer icon and select **Properties** from the File menu.
3. Select the **Fiery Printing** tab.  
This tab serves as the control center for all frequently used printing functions.
4. Select the **Paper Source** print option bar.
  - a. In the **Page Size** area, specify the paper size for the job.
  - b. In the **Paper Source** area, select the paper tray for the job.
  - c. In the **Media Type** area, select the type of media to use for the job.

For more information on these and other print options, refer to the chapter *Print options*.



*If paper loaded in the selected tray is a different size, orientation, and/or media type than that of the job you are sending, the printer displays an error message and the job might not print. Load the correct paper in the selected tray or cancel the job.*

5. Select the **Paper Source, Layout, ColorWise, Image Quality** and **Finishing** print option bars to specify the appropriate settings for the print job.

These print options are specific to the server and the printer. They override settings specified in Printer Setup, but can be overridden from the Fiery WebSpooler. For more information on these and other print options, refer to the chapter *Print options*.

If you select **Printer default**, the job prints according to the settings entered during Setup, or the default settings. Refer to the chapter *Print options*.

Some options can also be set from an application (for example, Reverse Page Order or Collation). In these cases, use the driver option to perform the function, rather than setting it from the application. The application may not set up the file properly for printing on the DocuColor 2006 and may also take longer to process.

6. Select **OK** in the Print dialog box.

### **Setting print options for all PCL jobs (Windows NT 4.0)**

---

1. Select **Start, Settings, and Printers**.
2. Right-click to select the **Xerox DocuColor 2006 PCL** printer icon and select **Document Defaults**.
3. Select the **Fiery Printing** tab.
4. Specify the appropriate default settings for all print jobs as described in the previous procedure.
5. Select **OK**.

## Printing with WebDownloader

---

Downloading files with WebDownloader is generally faster than printing from application software. You can use WebDownloader to print PostScript, PCL, EPS, or PDF files.

1. Select the **WebDownloader** button.
2. Select the **queue** in the Print Connection drop-down menu.  
You can download files to the **direct**, **print**, or **hold** queue. Files sent to the **print** queue are spooled in the memory of the printer. Files sent to the **hold** queue remain in memory until they are moved to the print queue or are deleted.
3. If you are sending a PDF job, select the **PDF** check box. If this checkbox is not selected, the download may cause PS error.
4. Enter the desired number of copies to print. If you want a specific page range to print, enter the first page and last page of the range.
5. Select the **Browse** button to search for the file to download. Select the **file** and **Open**.
6. Select the **Send File** button.