

# Printing Guide

DOCUCOLOR 40 CP



THE DOCUMENT COMPANY

XEROX



Copyright © 1998 Electronics for Imaging, Inc. All rights reserved.

This publication is protected by copyright, and all rights are reserved. No part of it may be reproduced or transmitted in any form or by any means for any purpose without express prior written consent from Electronics for Imaging, Inc., except as expressly permitted herein. Information in this document is subject to change without notice and does not represent a commitment on the part of Electronics for Imaging, Inc.

The software described in this publication is furnished under license and may only be used or copied in accordance with the terms of such license.

Patents: 5,666,436; 5,553,200; 5,543,940; 5,537,516; 5,517,334; 5,506,946; 5,424,754; 5,343,311; 5,212,546; 4,941,038; 4,837,722; 4,500,919

#### **Trademarks**

EFI, the EFI logo, Fiery, the Fiery logo, EFICOLOR, and Rip-While-Print are trademarks registered in the U.S. Patent and Trademark Office. Fiery ZX, Fiery X2, Command WorkStation, AutoCal, Starr Compression, Memory Multiplier, ColorWise, NetWise, and VisualCal are trademarks of Electronics for Imaging, Inc.

DocuColor and all Xerox product names mentioned in this publication are trademarks of the XEROX CORPORATION.

Adobe, the Adobe logo, Adobe Illustrator, PostScript, Adobe Photoshop, Adobe Separator, and Adobe PageMaker are trademarks of Adobe Systems Incorporated, registered in certain jurisdictions. EPS (Encapsulated PostScript) is a trademark of Altsys Corporation. Apple, the Apple logo, AppleShare, AppleTalk, EtherTalk, LaserWriter, and Macintosh are registered trademarks, and MultiFinder is a trademark of Apple Computer, Inc. Microsoft, MS, MS-DOS, and Windows are registered trademarks of Microsoft in the US and other countries. QuarkXPress is a registered trademark of Quark, Inc. Times, Helvetica, and Palatino are trademarks of Linotype AG and/or its subsidiaries. ITC Avant Garde, ITC Bookman, ITC Zapf Chancery, and ITC Zapf Dingbats are registered trademarks of International Typeface Corporation. Ethernet is a registered trademark of Xerox Corporation. Farallon, PhoneNET PC, and PhoneNET Talk are trademarks of Farallon Computing, Inc. COPS and COPSTalk are trademarks of CoOperative Printing Solutions, Inc. NetWare and Novell are registered trademarks and Internetwork Packet Exchange (IPX) is a trademark of Novell, Inc. SyQuest is a registered trademark, in the United States and certain other countries, of SyQuest Technology, Inc. UNIX is a registered trademark of UNIX System Laboratories, a wholly owned subsidiary of Novell, Inc. PANTONE is a registered trademark of Pantone, Inc.

All other terms and product names may be trademarks or registered trademarks of their respective owners, and are hereby acknowledged.

#### **Legal Notices**

**APPLE COMPUTER, INC. ("APPLE") MAKES NO WARRANTIES, EXPRESS OR IMPLIED, INCLUDING WITHOUT LIMITATION THE IMPLIED WARRANTIES OF MERCHANTABILITY AND FITNESS FOR A PARTICULAR PURPOSE, REGARDING THE APPLE SOFTWARE. APPLE DOES NOT WARRANT, GUARANTEE, OR MAKE ANY REPRESENTATIONS REGARDING THE USE OR THE RESULTS OF THE USE OF THE APPLE SOFTWARE IN TERMS OF ITS CORRECTNESS, ACCURACY, RELIABILITY, CURRENTNESS, OR OTHERWISE. THE ENTIRE RISK AS TO THE RESULTS AND PERFORMANCE OF THE APPLE SOFTWARE IS ASSUMED BY YOU. THE EXCLUSION OF IMPLIED WARRANTIES IS NOT PERMITTED BY SOME STATES. THE ABOVE EXCLUSION MAY NOT APPLY TO YOU.**

**IN NO EVENT WILL APPLE, ITS DIRECTORS, OFFICERS, EMPLOYEES OR AGENTS BE LIABLE TO YOU FOR ANY CONSEQUENTIAL, INCIDENTAL OR INDIRECT DAMAGES (INCLUDING DAMAGES FOR LOSS OF BUSINESS PROFITS, BUSINESS INTERRUPTION, LOSS OF BUSINESS INFORMATION, AND THE LIKE) ARISING OUT OF THE USE OR INABILITY TO USE THE APPLE SOFTWARE EVEN IF APPLE HAS BEEN ADVISED OF THE POSSIBILITY OF SUCH DAMAGES. BECAUSE SOME STATES DO NOT ALLOW THE EXCLUSION OR LIMITATION OF LIABILITY FOR CONSEQUENTIAL OR INCIDENTAL DAMAGES, THE ABOVE LIMITATIONS MAY NOT APPLY TO YOU.** Apple's liability to you for actual damages from any cause whatsoever, and regardless of the form of the action (whether in contract, tort [including negligence], product liability or otherwise), will be limited to \$50.

#### **Restricted Rights Legends**

For defense agencies: Restricted Rights Legend. Use, reproduction, or disclosure is subject to restrictions set forth in subparagraph (c)(1)(ii) of the Rights in Technical Data and Computer Software clause at 252.227.7013.

For civilian agencies: Restricted Rights Legend. Use, reproduction, or disclosure is subject to restrictions set forth in subparagraph (a) through (d) of the commercial Computer Software Restricted Rights clause at 52.227-19 and the limitations set forth in Electronics for Imaging, Inc.'s standard commercial agreement for this software. Unpublished rights reserved under the copyright laws of the United States.

**Printed in the United States of America on recycled paper.**

**Part Number:** n/a

## **CE Mark**

The CE marking applied to this product symbolises Rank Xerox's declaration of conformity with the following applicable directives of the European Union as of the dates indicated.

January 1, 1996—Council Directive 70/80/CCO amended by Council Directive 93/68/EEO. Approximation of the laws of the member states related to low voltage equipment.

January 1, 1996—Council Directive 59/336/EEC. Approximation of the laws of the member states related to electromagnetic compatibility.

A full declaration defining the relevant directives and referenced standards can be obtained from your Rank Xerox representative.

**WARNING: In order to allow this equipment to operate in proximity to industrial, scientific, and Medical (ISM) equipment, the external radiation from ISM equipment may have to be limited or special migration measures taken.**

## **FCC Information**

WARNING: FCC Regulations state that any unauthorized changes or modifications to this equipment not expressly approved by the manufacturer could void the user's authority to operate this equipment.

## **Class B Declaration of Conformity**

This equipment has been tested and found to comply with the limits for a class B digital device, pursuant to Part 15 of the FCC rules. These limits are designed to provide reasonable protection against harmful interference in a residential installation. This equipment generates, uses and can radiate radio frequency energy and if not installed and used in accordance with the instructions, may cause harmful interference to radio communications. However, there is no guarantee that interference will not occur in a particular installation.

If this equipment does cause harmful interference to radio or television reception, which can be determined by turning the equipment off and on, the user is encouraged to try to correct the interference by one or more of the following measures:

Reorient or relocate the receiving antenna.

Increase the separation between the equipment and receiver.

Connect the equipment into an outlet on a circuit different from that to which the receiver is connected.

Consult the dealer or an experienced radio/TV technician for help.

In order to maintain compliance with FCC regulations, shielded cables must be used with this equipment. Operation with non-approved equipment or unshielded cables is likely to result in interference to radio and TV reception. The user is cautioned that changes and modifications made to the equipment without the approval of manufacturer could void the user's authority to operate this equipment.

## **Industry Canada Class B Notice**

This Class B digital apparatus meets all the requirements of the Canadian Interference-Causing Equipment Regulations.

## **Avis de Conformation Classe B de l'Industrie Canada**

Cet appareil numérique de la classe B respecte toutes les exigences du Règlement sur le matériel brouilleur du Canada.

## **Certificate by Manufacturer/Importer**

This is to certify that the FC07 is shielded against radio interference in accordance with the provisions of VFG 243/1991. The German Postal Services have been advised that this device is being put on the market and that they have been given the right to inspect the series for compliance with the regulations. Electronics for Imaging, Inc.

## **Bescheinigung des Herstellers/Importeurs**

Heirmit wird bescheinigt, dass der FC07 im Uebereinstimmung mit den Bestimmungen der VFG 243/1991 Funk-Entstort ist. Der Deutschen Bundespost wurde das Inverkehrbringen dieses Geraetes angezeigt und die Berechtigung zur Ueberpruefung der Serie auf Einhaltung der Bestimmungen eingeräumt. Electronics for Imaging, Inc.

## **RFI Compliance Notice**

This equipment has been tested concerning compliance with the relevant RFI protection requirements both individually and on system level (to simulate normal operation conditions). However, it is possible that these RFI Requirements are not met under certain unfavorable conditions in other installations. It is the user who is responsible for compliance of his particular installation.

Dieses Gerat wurde einzeln sowohl als auch in einer Anlage, die einen normalen Anwendungsfall nachbildet, auf die Einhaltung der Funk-entstoerbestimmungen geprueft. Es ist jedoch moeglich, dass die Funk-entstoerbestimmungen unter unguenstigen Umstaenden bei anderen Geratekombinationen nicht eingehalten werden. Fuer die Einhaltung der Funk-entstoerbestimmungen seigner gesamten Anlage, in der dieses Gerat betrieben wird, ist der Betreiber verantwortlich.

Compliance with applicable regulations depends on the use of shielded cables. It is the user who is responsible for procuring the appropriate cables.

Einhaltung mit betreffenden Bestimmungen kommt darauf an, dass geschirmte Ausfuehrungen gebraucht werden. Fuer die beschaffung richtiger Ausfuehrungen ist der Betreiber verantwortlich.

### **Software License Agreement**

Before using the Software, please carefully read the following terms and conditions. BY USING THIS SOFTWARE, YOU SIGNIFY THAT YOU HAVE ACCEPTED THE TERMS OF THIS AGREEMENT. If you cannot or do not accept these terms, you may return the entire package within ten (10) days to the Distributor or Dealer from which you obtained them for a full refund.

Electronics for Imaging, Inc. grants to you a non-exclusive, non-transferable license to use the software and accompanying documentation ("Software") included with the DocuColor 40 CP you have purchased, including without limitation the PostScript<sup>®</sup> software provided by Adobe Systems Incorporated.

You may:

- a. use the Software solely for your own customary business purposes and solely with DocuColor 40 CP;
- b. use the digitally-encoded machine-readable outline and bitmap programs ("Font Programs") provided with DocuColor 40 CP in a special encrypted format ("Coded Font Programs") to reproduce and display designs, styles, weights, and versions of letters, numerals, characters and symbols ("Typefaces") solely for your own customary business purposes on the display window of the DocuColor 40 CP or monitor used with DocuColor 40 CP;
- c. use the trademarks used by Electronics for Imaging to identify the Coded Font Programs and Typefaces reproduced therefrom ("Trademarks"); and
- d. assign your rights under this Agreement to a transferee of all of your right, title and interest in and to DocuColor 40 CP provided the transferee agrees to be bound by all of the terms and conditions of this Agreement.

You may not:

- a. make use of the Software, directly or indirectly, to print bitmap images with print resolutions of 600720 dots per inch or greater, or to generate fonts or typefaces for use other than with DocuColor 40 CP;
- b. make or have made, or permit to be made, any copies of the Software, Coded Font Programs, accompanying documentation or portions thereof, except as necessary for use with the DocuColor 40 CP unit purchased by you; provided, however, that under no circumstances may you make or have made, or permit to be made, any copies of that certain portion of the Software which has been included on the DocuColor 40 CP hard disk drive. You may not copy the documentation;
- c. attempt to alter, disassemble, decrypt or reverse engineer the Software, Coded Font Programs or accompanying documentation.
- d. rent or lease the Software.

### **Proprietary Rights**

You acknowledge that the Software, Coded Font Programs, Typefaces, Trademarks and accompanying documentation are proprietary to Electronics for Imaging and its suppliers and that title and other intellectual property rights therein remain with Electronics for Imaging and its suppliers. Except as stated above, this Agreement does not grant you any right to patents, copyrights, trade secrets, trademarks (whether registered or unregistered), or any other rights, franchises or licenses in respect of the Software, Coded Font Programs, Typefaces, Trademarks or accompanying documentation. You may not adapt or use any trademark or trade name which is likely to be similar to or confusing with that of Electronics for Imaging or any of its suppliers or take any other action which impairs or reduces the trademark rights of Electronics for Imaging or its suppliers. The trademarks may only be used to identify printed output produced by the Coded Font Programs. At the reasonable request of Electronics for Imaging, you must supply samples of any Typeface identified with a trademark.

### **Confidentiality**

You agree to hold the Software and Coded Font Programs in confidence, disclosing the Software and Coded Font Programs only to authorized users having a need to use the Software and Coded Font Programs as permitted by this Agreement and to take all reasonable precautions to prevent disclosure to other parties.

### **Remedies**

Unauthorized use, copying or disclosure of the Software, Coded Font Programs, Typefaces, Trademarks or accompanying documentation will result in automatic termination of this license and will make available to Electronics for Imaging other legal remedies.

### **Limited Warranty And Disclaimer**

Electronics for Imaging warrants that, for a period of ninety (90) days from the date of delivery to you, the Software under normal use will perform without significant errors that make it unusable. Electronics for Imaging's entire liability and your exclusive remedy under this warranty (which is subject to you returning DocuColor 40 CP to Electronics for Imaging or an authorized dealer) will be, at Electronics for Imaging's option, to use reasonable commercial efforts to attempt to correct or work around errors, to replace the Software with functionally equivalent software, or to refund the purchase price and terminate this Agreement. Some states do not allow limitations on duration of implied warranty, so the above limitation may not apply to you.

Except for the above express limited warranty, Electronics for Imaging makes and you receive no warranties or conditions on the Products, express, implied, or statutory, and Electronics for Imaging specifically disclaims any implied warranty or condition of merchantability or fitness for a particular purpose.

For warranty service, please contact your authorized service/support center.

EXCEPT FOR THE ABOVE EXPRESS LIMITED WARRANTY, ELECTRONICS FOR IMAGING MAKES AND YOU RECEIVE NO WARRANTIES OR CONDITIONS ON THE SOFTWARE OR CODED FONT PROGRAMS, EXPRESS, IMPLIED, STATUTORY, OR IN ANY OTHER PROVISION OF THIS AGREEMENT OR COMMUNICATION WITH YOU, AND ELECTRONICS FOR IMAGING SPECIFICALLY DISCLAIMS ANY IMPLIED WARRANTY OR CONDITION OF MERCHANTABILITY OR FITNESS FOR A PARTICULAR PURPOSE. Electronics for Imaging does not warrant that the operation of the software will be uninterrupted or error free or that the Software will meet your specific requirements.

### **Limitation Of Liability**

IN NO EVENT WILL ELECTRONICS FOR IMAGING OR ITS SUPPLIERS BE LIABLE FOR ANY DAMAGES, INCLUDING LOSS OF DATA, LOST PROFITS, COST OF COVER OR OTHER SPECIAL, INCIDENTAL, CONSEQUENTIAL OR INDIRECT DAMAGES ARISING FROM THE USE OF THE SOFTWARE, CODED FONT PROGRAMS OR ACCOMPANYING DOCUMENTATION, HOWEVER CAUSED AND ON ANY THEORY OF LIABILITY. THIS LIMITATION WILL APPLY EVEN IF ELECTRONICS FOR IMAGING OR ANY AUTHORIZED DEALER HAS BEEN ADVISED OF THE POSSIBILITY OF SUCH DAMAGE. YOU ACKNOWLEDGE THAT THE PRICE OF THE UNIT REFLECTS THIS ALLOCATION OF RISK. BECAUSE SOME STATES/JURISDICTIONS DO NOT ALLOW THE EXCLUSION OR LIMITATION OF LIABILITY FOR CONSEQUENTIAL OR INCIDENTAL DAMAGES, THE ABOVE LIMITATION MAY NOT APPLY TO YOU.

### **Export Controls**

You agree that you will not export or re-export the Software or Coded Font Programs in any form without the appropriate United States and foreign government licenses. Your failure to comply with this provision is a material breach of this Agreement.

### **Government Use**

Use, duplication or disclosure of the Software by the United States Government is subject to restrictions as set forth in subdivision (c) (1) (ii) of the Rights in Technical Data and Computer Software clause at DFARS 252.227-7013 or in subparagraphs (c) (1) and (2) of the Commercial Computer Software—Restricted Right Clause at 48 CFR 52.227-19, as applicable.

### **Third Party Beneficiary**

You are hereby notified that Adobe Systems Incorporated, a California corporation located at 345 Park Avenue, San Jose, CA 95110-2704 ("Adobe") is a third-party beneficiary to this Agreement to the extent that this Agreement contains provisions which relate to your use of the Fonts, the Coded Font Programs, the Typefaces and the Trademarks licensed hereby. Such provisions are made expressly for the benefit of Adobe and are enforceable by Adobe in addition to Electronics for Imaging.

### **General**

This Agreement will be governed by the laws of the State of California.

This Agreement is the entire agreement held between us and supersedes any other communications or advertising with respect to the Software, Coded Font Programs and accompanying documentation.

If any provision of this Agreement is held invalid, the remainder of this Agreement shall continue in full force and effect.

If you have any questions concerning this Agreement, please write to Electronics for Imaging, Inc., Attn: Licensing Dept. or see Electronics for Imaging's web site at [www.efi.com](http://www.efi.com).

Electronics for Imaging, Inc.  
2855 Campus Drive  
San Mateo, CA 94403

# Contents

## Preface

---

About this manual	xii
About the documentation	xii
How the DocuColor 40 CP works	xii
About PostScript printer drivers and PPDs	xiii
Supported paper sizes and resolutions	xiii
Before you begin	xiii

## Chapter 1: Printing from Windows Computers

---

Printing from applications	1-1
Setting options and printing with Windows 95	1-1
Setting options and printing from Windows 3.1x	1-6
Setting options and printing from Windows NT 4.0	1-10
Printing to the parallel port	1-12
Saving files to print at a remote location	1-12
Using Downloader to print	1-13

## Chapter 2: Printing from Mac OS Computers

---

Printing from applications	2-1
Selecting the DocuColor 40 CP in the Chooser	2-1
Setting print options and printing from Mac OS computers	2-4
Using Downloader to print	2-9

## Chapter 3: Printing from UNIX Workstations

---

Printing to the DocuColor 40 CP	3-1
---------------------------------	-----

## Chapter 4: Downloading Files and Fonts

---

Using Downloader	4-1
Printing with Downloader	4-3
Downloading and managing printer fonts	4-6

## Chapter 5: Monitoring Print Jobs

---

WebTools	5-1
Checking DocuColor 40 CP status with the Status WebTool	5-2
Accessing information with the WebLink WebTool	5-2

## Appendix A: Print Options

---

Where to set print options	A-1
Print options and override hierarchy	A-2
More information about print options	A-5

## Appendix B: Font List

---

Printer fonts	B-1
Adobe Type 1 fonts	B-1
TrueType fonts	B-5

## Appendix C: Troubleshooting

---

Maintaining optimal system performance	C-1
Troubleshooting	C-1
General printing problems	C-2
Problems with print quality	C-4
Problems with Downloader	C-5
Problems with WebTools	C-6

## Index



## Preface

The DocuColor 40 CP Color Server enables you to use your color copier as a networked printer. You can use the DocuColor 40 CP to print final documents or to proof jobs you will later print on an offset press. You send a print job to the DocuColor 40 CP as you would to any other printer—you select it from the Microsoft Windows Printers dialog box or Apple Mac OS Chooser, and then print from within any application.

## About this manual

This manual is intended for those remote users who send jobs via the network or via a direct parallel port connection between the DocuColor 40 CP and a Windows computer. It covers the following topics:

- Printing from a Windows computer
- Printing from a Mac OS computer
- Printing from UNIX
- Downloading files and fonts using Downloader
- Monitoring jobs and accessing information using WebTools
- Specifying and overriding job settings, examples of the printer fonts installed on the DocuColor 40 CP, and troubleshooting information.

## About the documentation

This manual is part of a set of DocuColor 40 CP documentation that includes the following manuals for users and system administrators:

- The *Configuration Guide* explains basic configuration and administration of the DocuColor 40 CP for the supported platforms and network environments. It also includes guidelines for setting up UNIX, Windows NT, and Novell NetWare servers to provide Adobe PostScript printing services to clients.
- *Getting Started* describes how to install software to enable users to print to the DocuColor 40 CP. Specifically, it describes installation of PostScript™ printer drivers, printer description files, and other user software provided on the DocuColor 40 CP User Software CD. It also explains how to connect each user to the network.
- The *Printing Guide* describes the printing features of the DocuColor 40 CP for users who send jobs via remote workstations on the network or via a direct parallel port connection.
- The *Color Guide* provides an introduction to the basics of color theory and printing to a DocuColor 40 CP Color Server. It also includes practical color printing tips and application notes that explain how to print to the DocuColor 40 CP from popular Windows and Mac OS applications.
- The *Job Management Guide* explains the functions of the DocuColor 40 CP utilities, and how they are used to manage jobs and maintain color quality. This book is intended for an operator or administrator, or a user with the necessary access privileges, who needs to monitor and manage job flow, perform color calibration, and troubleshoot problems that may arise.
- *Release Notes* provide last-minute product information and workarounds for some of the problems you may encounter.

## How the DocuColor 40 CP works

The DocuColor 40 CP receives files from computers on the network, processes (RIPs) those files, and then sends them to the copier's print engine for printing. Even with the DocuColor 40 CP installed, you can still use the copier to make copies.

When printing from an application, your Windows or Mac OS computer communicates with the DocuColor 40 CP by means of a PostScript printer driver and a PostScript printer description file (PPD).

## About PostScript printer drivers and PPDs

A PostScript printer driver is an application that manages printing communication between your application software and the printer. It interprets the instructions generated by the application software, merges those instructions with printer-specific PPD options you specify (see below), and translates all that information into PostScript, a language the printer understands. In other words, the printer driver writes a PostScript file based on your original file and the options you set from the Print dialog box.

A PPD file contains information about a particular device's features and capabilities (for example, what paper sizes and media types are supported). The PostScript printer driver reads the information in the PPD file and presents that information to you in the form of options you can choose from the Print dialog box. The PPD for the DocuColor 40 CP includes information about the features of both the copier and the DocuColor 40 CP Color Server.

For information on the PPD options for your DocuColor 40 CP, see Appendix A, "Print Options."

## Supported paper sizes and resolutions

You can print all page sizes supported by the DocuColor 40 in Contone mode at 400 dpi in Full Color or Grayscale. Note that you can print on thick paper and transparencies only from the bypass tray. See the Xerox *Materials Usage Guide* for complete information about the page sizes supported.

## Before you begin

Before using the DocuColor 40 CP, follow these steps:

1. Confirm that the system administrator has completed Setup as described in the *Configuration Guide*.
2. Find out what printer defaults the administrator specified in Setup.  
These default settings can affect the results of your print jobs. Check with your administrator or operator for information on these default settings.
3. Confirm that the user software is installed correctly on your workstation, as described in *Getting Started*.

4. Consult the *Color Guide* for information on print options and application features that affect color output.

5. Find out how your workstation is configured for printing on the network.

If your site has an operator who controls all printing, you may have access to the Hold queue only. In this case, all jobs you send are spooled to the DocuColor 40 CP and held until the operator sends them to their next stage of processing.

You may also have access to the Print queue. If you send jobs to this queue, jobs spool to the DocuColor 40 CP and proceed to RIP and print according to your job settings—unless someone (you, or an operator, for example) intervenes.

Lastly, you may have access to the Direct connection, which sends jobs straight to the server without spooling.

6. Find out whether the DocuColor 40 CP is set up to use WebTools and what your access privileges are.

The administrator may or may not have enabled access to the server via the Internet (or an intranet).

## Chapter 1: Printing from Windows Computers

This chapter describes how to print to the DocuColor 40 CP from Windows 95, Windows 3.1x, and Windows NT 4.0 computers.

You can print from a networked Windows computer, from a Windows computer using Windows (WINS) printing, or from a Windows computer connected to the parallel port on the DocuColor 40 CP. If you plan to print files at another location, follow the procedures described in “Saving files to print at a remote location” on page 1-12.

Another way to print from a Windows 95 or Windows NT 4.0 computer is to download PostScript, Encapsulated PostScript (EPS), or Portable Document Format (PDF) files using Downloader. Basic instructions are provided at the end of this chapter; for details on using Downloader, see Chapter 4.

**NOTE:** For information on setting up the Windows environment for printing with Windows servers connected to the DocuColor 40 CP, see the *Configuration Guide*. For information on how to connect to the DocuColor 40 CP over the network, install printer drivers, and install Downloader, see *Getting Started*.

### Printing from applications

Once you have installed the printer driver and set it to the proper port as described in *Getting Started*, you can print directly from most Windows applications. Simply choose the Print command from within your application.

To achieve the best printing results from specific applications, see the *Color Guide*.

### Setting options and printing with Windows 95

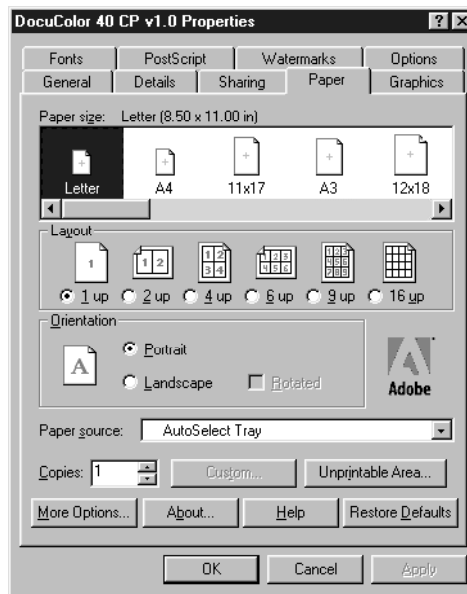
To print from Windows 95, use the Adobe PostScript Printer Driver for Windows version 4.2.x included with the DocuColor 40 CP user software.

Once you have installed the Adobe PostScript printer driver and DocuColor 40 CP PostScript Printer Description file (PPD), you can specify print settings. You can also change some of these settings for a particular job from within your application when you send it to the DocuColor 40 CP. Before printing, make sure the correct print options are set.

---

**TO SET PRINT OPTIONS AND PRINT FROM WINDOWS 95 WITH THE ADOBE PS PRINTER DRIVER:**

1. Click the Start button, point to Settings, and click Printers.
2. Select the icon for the DocuColor 40 CP and choose Properties from the File menu.
3. Click the Paper tab.
4. Specify the appropriate settings for your print job.



In the Paper size area, specify the page size for your job.

From the Paper Source pop-up menu, choose the paper tray for the job.

To specify a Media Type, click More Options. Choose from the Paper type pop-up menu and then click OK.

**NOTE:** If paper loaded in the selected tray is a different size, orientation, and/or media type than that of the job you are sending, the DocuColor 40 CP displays an error message and the job will not print. You should then load the correct paper in the selected tray or cancel the job.

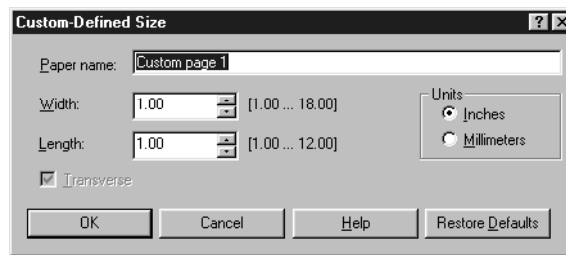
See Appendix A for information on these print options.

5. To use a standard paper size, make your selection and skip to step 10.  
To define a custom paper size, scroll the Paper size bar to the right and select one of the three Custom p+ paper sizes.

6. Click Custom to specify the dimensions of the custom paper size.

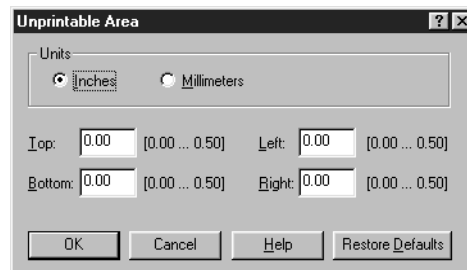
The minimum and maximum dimensions allowed by the printer driver are indicated inside brackets. You are notified if you enter an invalid dimension.

You can also give the custom paper size a name.



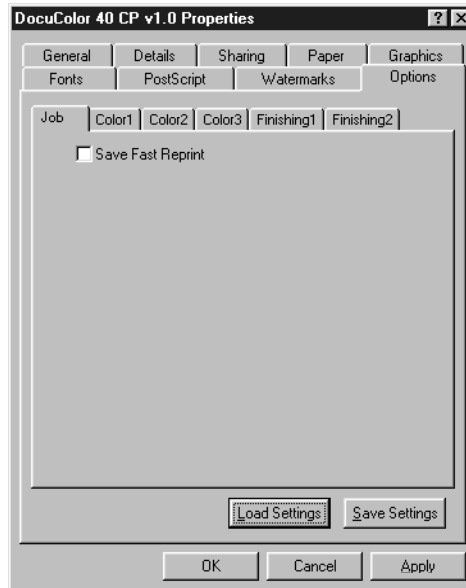
7. Set custom paper size dimensions and click OK.
8. Click Unprintable Area and enter margin values for the custom paper size.

The minimum and maximum values allowed by the printer driver are indicated inside brackets. You are notified if you enter an invalid entry.



9. Click OK.

10. Click the Options tab.



11. Click through Job, Color1, Color2, and so on, and specify the appropriate settings for your print job.

These print options are specific to the DocuColor 40 CP and the DocuColor 40. They override settings in DocuColor 40 CP Printer Setup; the settings can also be changed in the Override Print Settings dialog box with WebSpooler. For information about these options and overrides, see Appendix A, "Print Options."

If you choose Printer's default, the job prints according to the setting entered during Setup.

Some PPD options are ones that could also be set from an application (for example, Reverse Order printing or Collation). In these cases, use the PPD option to perform the function, rather than setting it from the application. The application may not set up the file properly for printing and may also take longer to process.



12. If you want to make the new settings your default settings, click Apply.
13. Click OK.
14. Choose Print in your application.
15. Click OK.



16. Enter text messages in the Notes 1 and Notes 2 areas.  
Enter user and job identification information for accounting purposes, or whatever information is required at your site.  
The notes you enter in these areas can be viewed from the WebSpooler, and also appear in the Job Log. They cannot be edited or erased by the operator.
17. Enter instructions to the operator about the job in the Instructions area.  
These instructions can be viewed from the WebSpooler, but *do not* appear in the Job Log. They *can* be edited by the operator.
18. Click OK.

### Saving and loading print option settings

Print option settings can be saved to a settings file on your hard disk. Saving a settings file enables you to easily load specifically configured settings for a particular job.

---

#### TO SAVE PRINT OPTION SETTINGS:

1. After specifying settings for print options in the Options tab, click Save Settings.
2. Name the settings file and browse to a location on your hard disk where you want to save the file.
3. Click OK.

The settings file is saved to the location you specified.

---

#### TO LOAD PRINT OPTION SETTINGS:

1. From the Options tab, click Load Settings.
2. Browse to the settings file.
3. Select the settings file from the list and click OK.

The print option settings in the Options tab are automatically configured with the saved settings.

### Setting options and printing from Windows 3.1x

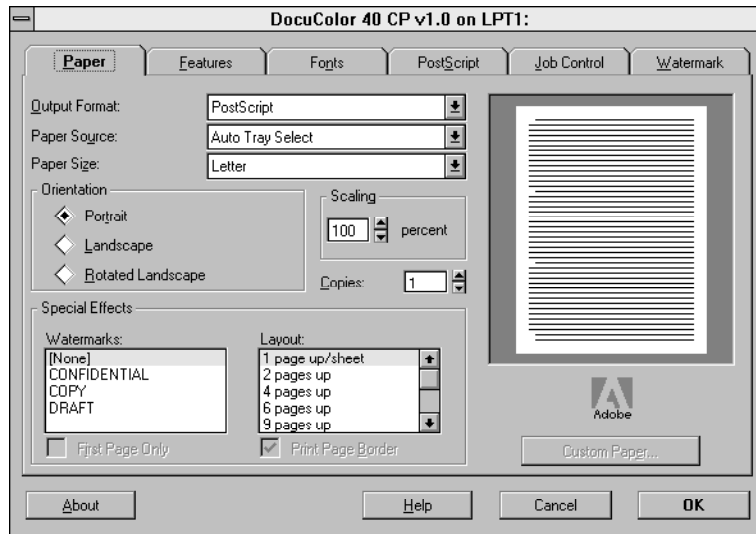
To print from Windows 3.1x, use the Adobe PostScript Printer Driver included with the DocuColor 40 CP user software.

Once you have installed the Adobe PostScript printer driver and DocuColor 40 CP PostScript Printer Description file (PPD), you can specify print settings. You can also change some of these settings for a particular job from within your application when you send it to the DocuColor 40 CP. Before printing, make sure that the correct print options are set.

---

**TO SET PRINT OPTIONS AND PRINT FROM WINDOWS 3.1X WITH THE ADOBE PS PRINTER DRIVER:**

1. In the Main window, double-click the Control Panel icon.
2. Double-click the Printers icon.
3. In the Printers window, select the DocuColor 40 CP in the Installed Printers box and click the Setup button.
4. Click the Paper tab.
5. Specify the appropriate settings for your print job.

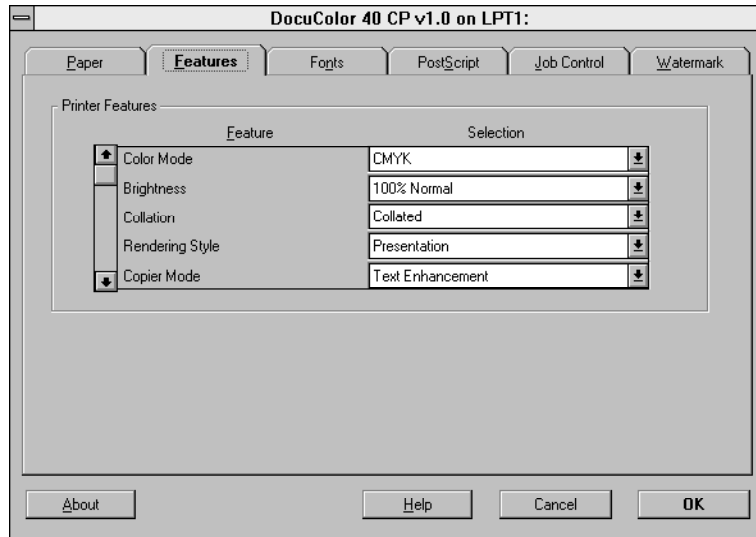


From the Paper Source pop-up menu, choose the paper tray for the job. The Paper Source selection is valid for the current job only.

In the Paper Size pop-up menu, specify the page size for the job.

**NOTE:** If paper loaded in the selected tray is a different size, orientation, and/or media type than that of the job you are sending, the DocuColor 40 CP displays an error message and the job will not print. You should then load the correct paper in the selected tray or cancel the job.

6. Click the Features tab.



7. Specify the appropriate settings for your job and click OK.

These print options are specific to the DocuColor 40 CP and the DocuColor 40 (you must scroll to see all the pop-up menus).

The settings you choose here override settings in DocuColor 40 CP Printer Setup; the settings can also be changed in the Override Print Settings dialog box with WebSpooler. For information about these options and overrides, see Appendix A, "Print Options."

If you choose Printer's default, the job prints according to the setting entered during Setup.

Some PPD options are ones that could also be set from an application (for example, Reverse Order printing or Collation). In these cases, use the PPD option to perform the function, rather than setting it from the application. The application may not set up the file properly for printing and may also take longer to process.

8. Choose Print in your application.



The image shows a dialog box titled "Color Printer Job Notes". It has a standard Windows-style title bar with a minus sign on the left. The dialog contains five input fields: "User:", "Document:", "Notes 1:", "Notes 2:", and "Instructions:". The "Instructions:" field is a larger text area. At the bottom of the dialog are two buttons: "Abort" and "OK".

9. If necessary, enter your name in the User area.

Once you enter your name in the User area, it appears automatically in this dialog box when you print subsequent jobs.

NOTE: This entry *cannot* be changed without deleting and reinstalling the printer.
10. Enter text messages in the Notes 1 and Notes 2 areas.

You can enter user and job identification information for accounting purposes, or whatever information is required at your site.

The notes you enter in these areas can be viewed from the WebSpooler, and also appear in the Job Log. They cannot be edited or erased by the operator.

The notes you enter in the Notes 1 and Notes 2 areas are kept in memory and appear automatically in this dialog box when you print subsequent jobs. You can edit these notes if necessary for subsequent jobs.
11. Enter instructions to the operator about the job in the Instructions area.

These instructions can be viewed from the WebSpooler, but *do not* appear in the Job Log. They *can* be edited by the operator.

The instructions you enter in the Instructions area are kept in memory and appear automatically in this dialog box when you print subsequent jobs. You can edit these instructions if necessary for subsequent jobs.
12. Click OK.

## Setting options and printing from Windows NT 4.0

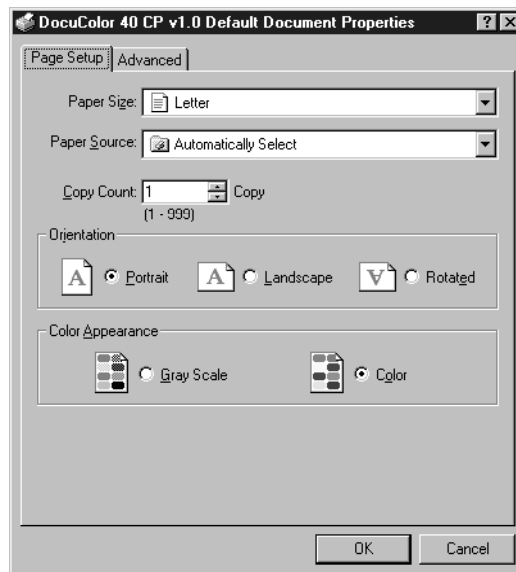
To print from Windows NT 4.0, use the Adobe PostScript Printer Driver for Windows version 5.0 included with the DocuColor 40 CP user software.

Once you have installed the Adobe PostScript Printer Driver and the DocuColor 40 CP PostScript Printer Description (PPD) file, you can specify print settings. You can also change some of these settings for a particular job from within your application when you send it to the DocuColor 40 CP. Before printing, make sure the correct print options are set.

---

### TO SET PRINT OPTIONS AND PRINT FROM WINDOWS NT 4.0 WITH THE ADOBE PS PRINTER DRIVER:

1. Click the Start button and choose Settings>Printers.
2. Right-click to select the DocuColor 40 CP and choose Document Defaults.
3. Click the Page Setup tab.
4. Specify the appropriate settings for your print job.

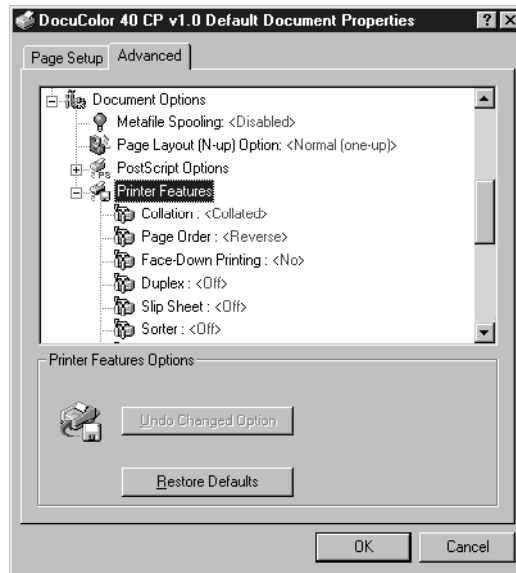


From the Paper Source pop-up menu, choose the paper tray for the job. The Paper Source selection is valid for the current job only.

In the Paper Size pop-up menu, specify the page size for the job.

**NOTE:** If paper loaded in the selected tray is a different size, orientation, and/or media type than that of the job you are sending, the DocuColor 40 CP displays an error message and the job will not print. You should then load the correct paper in the selected tray or cancel the job.

5. Click the Advanced tab.



6. Under Document Options, expand the Printer Features list and then specify print option settings in the list.

The print options in the Printer Features list are specific to the DocuColor 40 CP and the DocuColor 40. They override settings in DocuColor 40 CP Printer Setup; the settings can also be changed in the Override Print Settings dialog box with WebSpooler. For information about these options and overrides, see Appendix A, “Print Options.”

If you choose Printer’s default, the job prints according to the setting entered during Setup.

Some PPD options are ones that could also be set from an application (for example, Reverse Order printing or Collation). In these cases, use the PPD option to perform the function, rather than setting it from the application. The application may not set up the file properly for printing and may also take longer to process.

7. Click OK.
8. Choose Print in your application.

### Printing to the parallel port

The DocuColor 40 CP has a parallel port that enables you to print most files directly from a Windows computer if your network administrator has connected the Windows computer's parallel port to the DocuColor 40 CP parallel port.

NOTE: You cannot use Downloader through the parallel port.

---

#### TO PRINT FILES TO THE PARALLEL PORT:

1. Make sure the parallel port is enabled on your DocuColor 40 CP.  
Check with your site administrator or operator to see whether printing to the parallel port is enabled. See *Getting Started* for information on setting up parallel port printing on your Windows computer.
2. Select the printer port that is connected to the DocuColor 40 CP parallel port.  
Select one of the local ports: LPT1, LPT2, or LPT3. For instructions, see your Windows documentation.
3. Print from within your application.  
If you are printing a PostScript file in binary format (not ASCII), verify that the Network Setup option Ignore EOF Character is set to Yes. Check with your site administrator for this information.

### Saving files to print at a remote location

If you do not have a DocuColor 40 CP and are preparing files to take to a service bureau or other location, print your final files to the File port (as opposed to one of the local ports). You can also print to the File port to create a file to be downloaded using Downloader. For instructions, see your Windows documentation.



## Using Downloader to print

Downloading files with Downloader is generally faster than printing from application software. You can use Downloader to print PostScript, EPS, or PDF files.

---

### TO PRINT USING DOWNLOADER:

1. Create a PostScript, EPS, or PDF file. Specify the appropriate print option settings and include (embed) any necessary fonts that are not resident on the DocuColor 40 CP.  
For information on the fonts resident on the DocuColor 40 CP, check with the operator. Also see Appendix B, "Font List."
2. Start up Downloader and connect to the DocuColor 40 CP.  
For instructions on setting up Downloader, see *Getting Started*.
3. Select the file(s) you want to download, and specify any necessary options.
4. Click Download File(s).

For details, see Chapter 4, "Downloading Files and Fonts."



## Chapter 2: Printing from Mac OS Computers

You can print to the DocuColor 40 CP just as you would print to any other printer from your application software. First, select the DocuColor 40 CP as the current printer in the Chooser, and then print the file from within your application.

Another way to print from Mac OS computers is to download PostScript, EPS, or PDF files using Downloader.

### Printing from applications

Before you can print to the DocuColor 40 CP from applications, you must select the DocuColor 40 CP in the Chooser. Then, using the AdobePS 8.5.1 printer driver and the correct PostScript Printer Description file (PPD), you can control many DocuColor 40 CP printing features by specifying job settings from print dialog boxes.

For information on achieving the best printing results from specific applications, see the *Color Guide*.

### Selecting the DocuColor 40 CP in the Chooser

Before you print a job, make sure the DocuColor 40 CP is the currently selected printer.

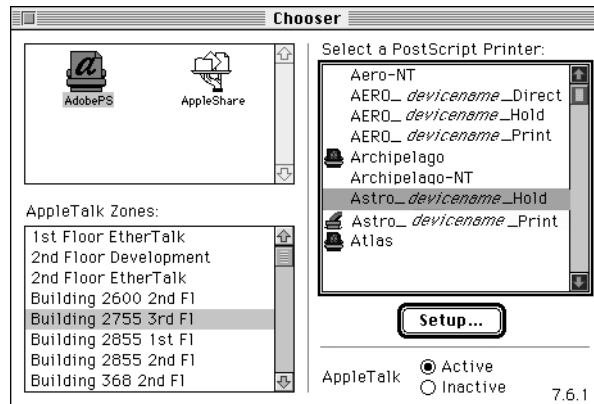
---

#### TO SELECT THE DOCUCOLOR 40 CP AS THE CURRENT PRINTER:

1. Make sure the DocuColor 40 CP is connected to your network and turned on.
2. Select Chooser from the Apple menu.
3. Click the AdobePS icon to select it.

4. If your network is divided into zones, select the zone in which the DocuColor 40 CP is located.
5. Select the DocuColor 40 CP in the list of printers that appears.

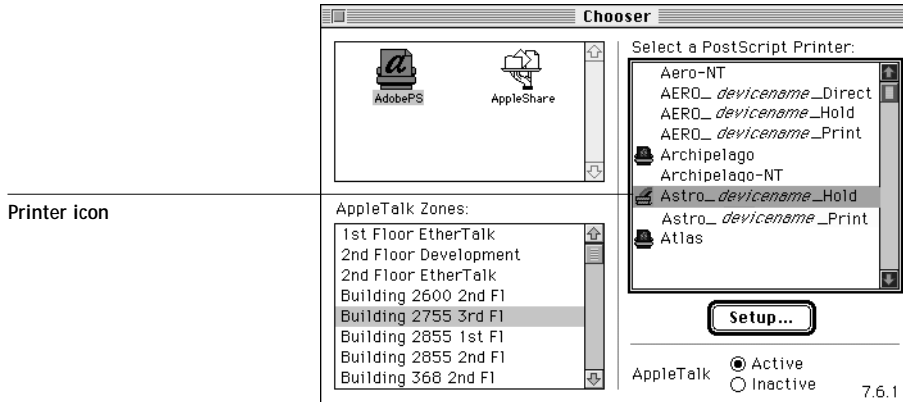
The names of all supported printers in the zone appear in the scroll list on the right.



**NOTE:** If your system administrator has not enabled the connection to the Print queue or the Direct connection, the corresponding printer connection will *not* appear in this list. For example, in the illustration above, only the Hold queue and the Print queue are enabled for the selected server. If your site has an operator who controls the flow of print jobs from the WebSpooler, you may be able to print only to the Hold queue.

6. With the DocuColor 40 CP selected, click Setup.

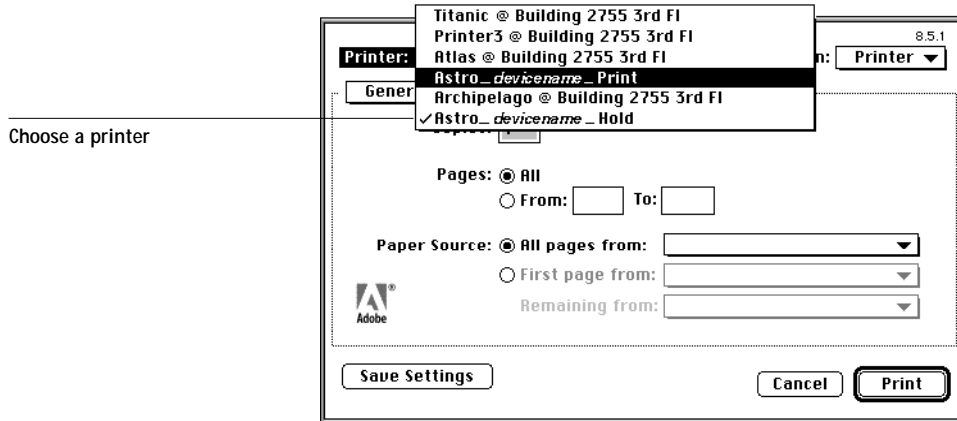
The Chooser automatically selects the correct PPD for the DocuColor 40 CP. A printer icon appears to the left of the printer name, indicating that the printer has been matched with a PPD.



If the Chooser cannot find the correct PPD for the DocuColor 40 CP, you are prompted to find and select the correct PPD. If you installed the AdobePS printer driver as described in *Getting Started*, the DocuColor 40 CP PPD is located in the System Folder:Extensions:Printer Descriptions folder.

7. In the Chooser window, make sure that AppleTalk is set to Active and then close the Chooser window.

The DocuColor 40 CP remains selected as the current printer until you choose a new printer in the Chooser. You can choose a different printer (or printer connection) from the Chooser or from the AdobePS print dialog box when you print (as shown below).



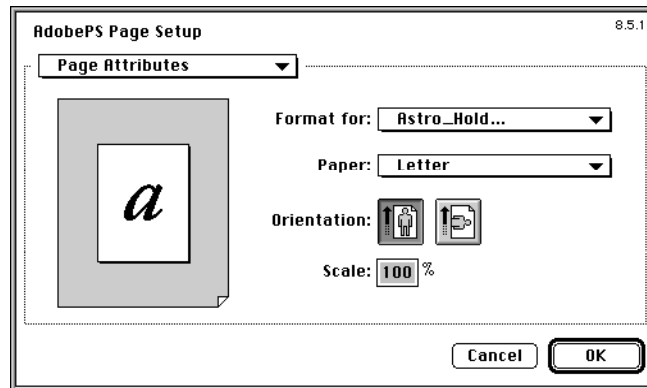
## Setting print options and printing from Mac OS computers

In Mac OS applications, print options are set from both the Page Setup dialog box and the Print dialog box. For details, see Appendix A, "Print Options."

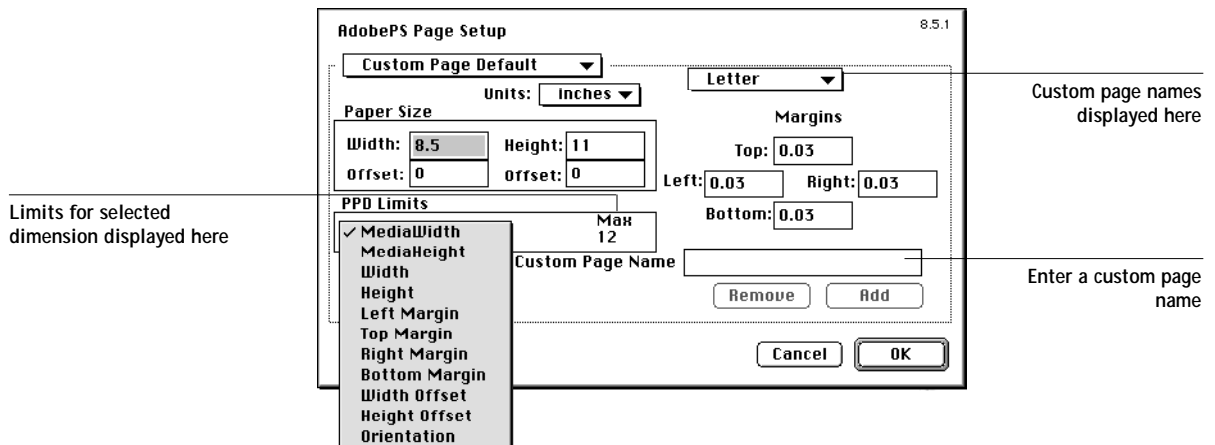
**NOTE:** Some default print options are set by the administrator during Setup. Check with the administrator or the operator for information on the current server default settings.

**TO SPECIFY PRINT OPTIONS AND PRINT WITH THE ADOBEPS 8.5.1  
PRINTER DRIVER:**

1. Open the file you want to print and choose Page Setup from the application's File menu.
2. In the Page Setup>Page Attributes dialog box, specify settings for your print job.

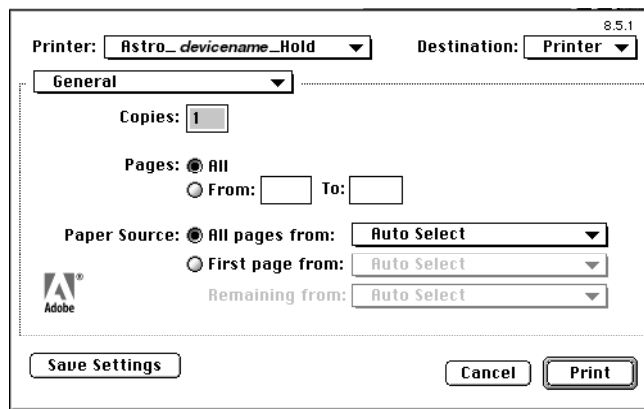


If you choose Custom as the paper size, you must also specify settings in the Page Setup>Custom Page Default dialog box.



When you specify dimensions for a custom page size, the limits for various dimensions, as defined by the PPD, are displayed.

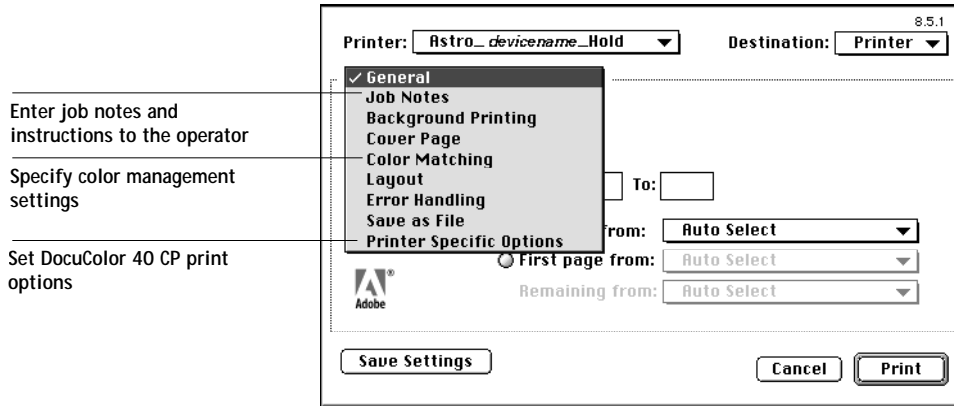
3. If you want to save this custom page size, enter a name for it and click Add.  
Saved custom page sizes appear in the menu of page sizes at the top right of the dialog box. To remove a saved custom page size, choose it from the menu and click Remove.
4. Click OK.
5. Choose Print from the application's File menu.  
Specify settings for the print options displayed.



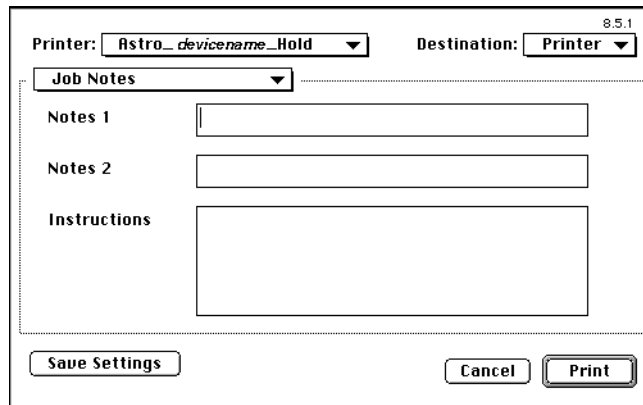


6. Using the pop-up menu shown below, specify print options for your job. Appropriate options for printing to the DocuColor 40 CP are described in the following steps.

NOTE: Print dialog boxes vary across applications.



7. In the Print>Notes dialog box, enter job notes and instructions to the operator.



In the Notes 1 and Notes 2 areas, enter user and job identification information for accounting purposes, or whatever information is required at your site. These notes appear in the Job Log; they can also be displayed from the WebSpooler. They *cannot* be edited or erased by the operator.

In the Instructions area, enter instructions to the operator about the job. They can be displayed from the WebSpooler, but do not appear in the Job Log. They can be edited by the operator.

8. In the Print>Color Matching dialog box, specify color management settings.

Printer: Astro\_devicename\_Hold Destination: Printer <sup>8.5.1</sup>

Color Matching

Print Color: Color/Grayscale

Printer Profile: Printer's Default

Save Settings Cancel Print

For most color print jobs you should use the settings shown above. For information on these options, see the *Color Guide*.

9. In the Print>Printer Specific Options dialog box, specify the appropriate settings for your print job.

Printer: Astro\_devicename\_Hold Destination: Printer <sup>8.5.1</sup>

Printer Specific Options

Collation: Collated

Page Order: Reverse

Face-Down Printing: No

Duplex: Off

Slip Sheet: Off

Sorter: Off

Stapler: Off

Copier Mode: Text Enhancement

Save Settings Cancel Print

These print options are specific to the DocuColor 40 CP and the DocuColor 40 (you may need to scroll to see all the options). They override settings in DocuColor 40 CP Setup; the settings can also be changed in the Override Print Settings dialog box from WebSpooler. For information about these options and overrides, see Appendix A, “Print Options.”

If you choose **Printer’s default**, the job prints according to the setting entered during Setup.

Some PPD options are ones that could also be set from an application (for example, Reverse Order printing or Collation). In these cases, use the PPD option to perform the function, rather than setting it from the application. The application may not set up the file properly for printing and may also take longer to process.

10. If you want to make the new settings your default settings, click **Save Settings**.
11. Click **Print**.

## Using Downloader to print

Downloading files with Downloader is generally faster than printing from application software. You can use Downloader to print PostScript, EPS, or PDF files.

---

### TO PRINT USING DOWNLOADER:

1. Create a PostScript, EPS, or PDF file. Specify the appropriate print option settings and include (embed) any necessary fonts that are not resident on the DocuColor 40 CP.  
For a list of fonts resident on the DocuColor 40 CP, check with the operator or see Appendix B, “Font List.”
2. Start up Downloader and connect to the DocuColor 40 CP.  
For instructions on setting up Downloader, see *Getting Started*.
3. Select the file(s) you want to download, and specify any necessary options.
4. Click **Download**.

For details, see Chapter 4, “Downloading Files and Fonts.”



## Chapter 3: Printing from UNIX Workstations

You can print to the DocuColor 40 CP directly from UNIX. Jobs printed to the DocuColor 40 CP are sent to the Print queue or Hold queue and can be manipulated from Windows and Mac OS computers on the network using WebSpooler.

**NOTE:** If you print to the Hold queue, an operator must intervene from WebSpooler for the job to print; jobs sent to the Hold queue are spooled to disk and held.

The queue name and DocuColor 40 CP printer name are established by your system administrator. Contact your system administrator for the names of your queues.

For information about setting up printing from TCP/IP, see your UNIX system documentation.

### Printing to the DocuColor 40 CP

You can use UNIX commands to print PostScript files and text files to the DocuColor 40 CP. In general, the basic print commands (`lpr`, `lpq`, `lprm`) can be used to send print jobs to the DocuColor 40 CP. See your UNIX manual pages or other documentation for information about UNIX commands.

The DocuColor 40 CP queue name referred to in the following procedures is the name defined in the `printcap` file by your system administrator.

**NOTE:** Only PostScript or text file formats can be printed from UNIX.

---

#### TO PRINT FROM UNIX:

- On a system running SunOS 4.1.x or another BSD-based variant, use the `lpr` command to send a job to the DocuColor 40 CP as follows:

```
lpr -P queue_name -# copies filename
```

For example, if the Print queue of your DocuColor 40 CP is named `Print_server`, your file is named `Sample`, and you want to print two copies, type:

```
lpr -P Print_server -# 2 Sample
```

- On a system running Solaris 2.x or any System V implementation of UNIX, use the `lp` command to send a job to the DocuColor 40 CP as follows:

```
lp -d queuename -n copies filename
```

For example, if the Print queue of your DocuColor 40 CP is named `Print_server`, your file is named `Sample`, and you want to print two copies, type:

```
lp -d Print_server -n 2 Sample
```

---

#### TO DISPLAY A LIST OF JOBS IN THE QUEUE:

- On a system running SunOS 4.1.x or another BSD-based variant, use the `lpq` command to see printer jobs in the queue as follows:

```
lpq -P queuename
```

For example, if the Print queue of your DocuColor 40 CP is named `Print_server`, type:

```
lpq -P Print_server
```

Your workstation displays the contents of the queue.

- On a system running Solaris 2 or any System V implementation of UNIX, use the `lpstat` command to see printer jobs in the queue as follows:

```
lpstat -o queuename
```

For example, if the Print queue of your DocuColor 40 CP is named `Print_server`, type:

```
lpstat -o Print_server
```

Your workstation displays the contents of the queue.

---

**TO REMOVE JOBS FROM THE QUEUE:**

**NOTE:** Unless you log in as the root user, you can remove only your own jobs.

- On a system running SunOS 4.1.x or another BSD-based variant, use the `lprm` command to remove jobs from the queue as follows.

```
lprm -P queuename jobnumber
```

You can use the `lpq` command to check the job number.

For example, to remove job number 123 from the Print queue of your DocuColor 40 CP named `Print_server`, type:

```
lprm -P Print_server 123
```

The `lprm` command reports the names of any files it removes.

- On a system running Solaris 2.x or any System V implementation of UNIX, use the `cancel` command to remove jobs from the queue.

```
cancel queuename-jobnumber
```

For example, to remove job number 123 from the Print queue of your DocuColor 40 CP named `Print_server`, type:

```
cancel Print_server-123
```





## Chapter 4: Downloading Files and Fonts

Downloader allows you to send PostScript, EPS, and PDF files directly to the DocuColor 40 CP without using the application they were created in. It also enables you to manage printer fonts on the DocuColor 40 CP.

You can use Downloader from a remote workstation. Downloader requires a network connection—you *cannot* use Downloader with the parallel port. For information on supported networking protocols, see *Getting Started*.

**NOTE:** The Windows and Mac OS versions of Downloader are fundamentally the same; differences are noted in this chapter. Where a window or dialog box is illustrated, the Windows version comes first, followed by the Mac OS version.

### Using Downloader

You can use Downloader to:

- Send PostScript, EPS, and PDF files to the DocuColor 40 CP
- Check the status of the DocuColor 40 CP
- Manage the PostScript printer fonts stored on the DocuColor 40 CP hard disk (this feature requires use of the Direct connection)

**NOTE:** Downloader was designed specifically for the DocuColor 40 CP; you cannot use it with any other printer.

---

#### TO VIEW INFORMATION WITH DOWNLOADER:

1. Launch Downloader.
2. Select the DocuColor 40 CP in the Chooser window and click OK (Windows) or Connect (Mac OS).

# 4

## 4-2 Downloading Files and Fonts

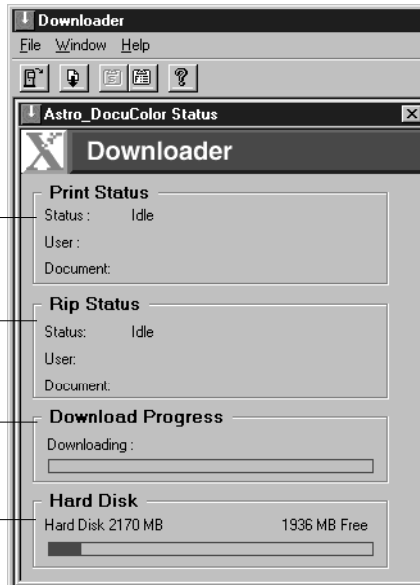
The Downloader Status window appears and you see the Downloader Toolbar, menus, and the status bar at the bottom of the screen.

Displays server status and user and document name of the job currently printing

Displays server status and user and document name of the job currently processing

Dynamically displays the progress of the job

Displays the amount of available disk space



Buttons for some menu functions appear in the Toolbar at the top of the window:



Open

Click to connect to a different DocuColor 40 CP.



Download

Click to download a file or font to the DocuColor 40 CP.



Status

Click to display the Status window for the current DocuColor 40 CP.



Font list

Click to display a list of printer fonts on the DocuColor 40 CP hard disk.



About  
Downloader

Click to view version information about Downloader.

You can click the Font list button or choose Font List from the File menu to view font information in the window.

3. To select a different DocuColor 40 CP, choose Open from the File menu or click the Open button.
4. Select the DocuColor 40 CP in the dialog box that appears, and click OK (Windows) or Connect (Mac OS).
5. To close the connection to the DocuColor 40 CP, make sure the Status window is active and choose Close from the File menu or click the close box in the Status window.
6. To quit Downloader, choose Exit (Windows) or Quit (Mac OS) from the File menu.

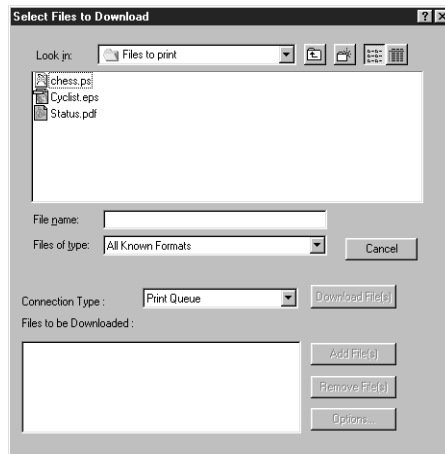
## Printing with Downloader

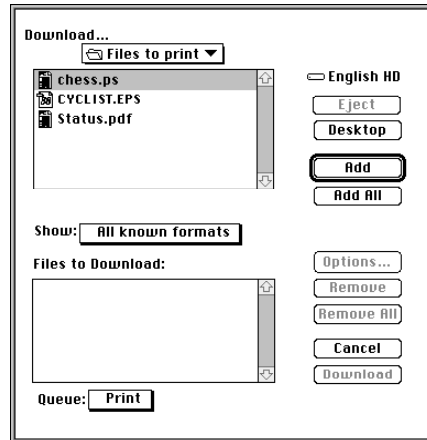
Printing files with Downloader is fast—generally faster than printing from within applications. If you regularly print large files, try printing with Downloader.

---

### TO DOWNLOAD A FILE OR FONT WITH DOWNLOADER:

1. Launch Downloader.
2. Choose Download from the File menu or click the Download button.





3. Choose the file type to display from the Files of type (Windows) or Show (Mac OS) menu.

You can leave this at the default All Known Formats or choose All Files. All Known Formats lists all files in formats supported by Downloader.

4. Choose the Connection Type (Windows) or Queue (Mac OS) to which you will download the files.

The options available to you in this menu depend on the Setup at your site. The potential selections are the Print queue, Hold queue, or Direct connection. If your administrator has not enabled one or more of these connections, you cannot select it.

If you choose the Direct connection, the job is spooled to the Print queue and then printed. If the Print queue is not enabled, the job is spooled to the Hold queue and must be released for printing by the operator.

To download fonts, you must use the Direct connection. If you do not have access to the Direct connection, you must embed any special fonts used by the file in the file when you generate it.

5. Select the filename and click Add File(s) (Windows) or Add (Mac OS).

The File name field (Windows) displays the name of the selected file before you click Add.

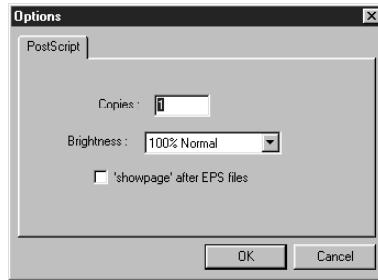
You can navigate to different drives and directories to select files to download. Click Add All (Mac OS) to add all files in a folder.

To select multiple sequential files, select the first file and then Shift-click the last file. Control-click to select multiple non-sequential files.

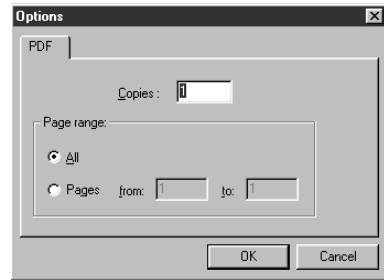
If you change your mind about a file, select the filename in the Files to Download list and click Remove File(s) (Windows) or Remove (Mac OS).

Click Remove All (Mac OS) to remove all files from the Files to Download list.

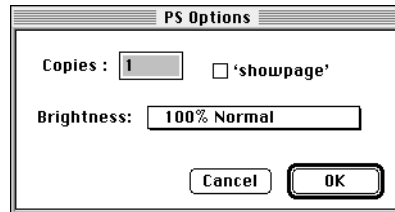
- To change the attributes of a file to be downloaded, select it and click Options.



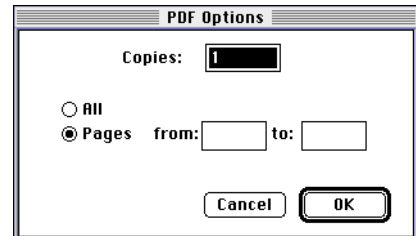
PostScript Options dialog box (Windows)



PDF Options dialog box (Windows)



PostScript Options dialog box (Mac OS)



PDF Options dialog box (Mac OS)

- Specify the following information in the dialog box and click OK.

The options you set apply only to the selected file. You can set different options, or leave the default settings, for each file.

**Copies**—Specify the number of copies.

**Brightness (PostScript and EPS files only)**—Change the Brightness setting if a file appears to be too dark or too light. Choose 85% for a substantially lighter image, 115% for a substantially darker image, or one of the options in between.

**NOTE:** Some applications, including Adobe Photoshop, provide transfer functions that let you specify density settings for an image. If the file you are printing includes transfer functions, the Downloader Brightness option has no effect. For more information on using transfer functions, see the documentation for your application.

**'showpage' after EPS files (Windows) or 'showpage' (Mac OS) (EPS files only)**—In most cases, you do not need to use this option. Select the 'showpage' option only if an EPS file fails to print without it. This option adds a 'showpage' PostScript language command at the end of the print job. Some applications omit this necessary PostScript language command when they generate EPS files. Select this option when printing EPS files generated by these applications. If you select this option unnecessarily, extra blank pages may print.

If you experience problems printing EPS files with Downloader, you can print the file directly from the application in which you created it.

**Page Range (PDF files only)**—Specify the page range you want to print.

8. Click **Download File(s) (Windows)** or **Download (Mac OS)**.
9. To cancel downloading, press **Esc (Windows)** or **Command-.** (Mac OS).

## Downloading and managing printer fonts

Before downloading a file that uses fonts not resident on the DocuColor 40 CP, you must download the fonts (unless the fonts are embedded in the file). To see what fonts are resident on the DocuColor 40 CP, use the **Font List** command (see page 4-8).

You can download fonts only via the Direct connection. If you do not have access to the Direct connection, you must embed any special fonts used by the file in the file when you generate it.

The screen fonts that correspond to the printer fonts installed on the DocuColor 40 CP are not automatically installed on your Windows system.

**NOTE:** You cannot use Downloader to download TrueType fonts. If you use TrueType fonts in Windows, you can print them by converting them to Adobe Type 1 fonts. To do this with the Adobe PS printer driver, click the **Fonts** tab and set up the **Font Substitution Table** as necessary.

### Printer fonts and Mac OS screen fonts

Like all PostScript fonts, the fonts included with the DocuColor 40 CP come in two forms: printer fonts and screen fonts. The printer fonts are installed permanently on the DocuColor 40 CP hard disk. The screen fonts, which are included with the DocuColor 40 CP user software, should be installed on your Mac OS computer. If you are using these fonts in documents you print on another printer, they are probably already installed. If not, you will need to install them yourself. For instructions, see *Getting Started*.

Occasionally, you may want to use Adobe Type 1 (Windows) or PostScript (Mac OS) fonts that are not included with the DocuColor 40 CP. If so, you will need to install both the screen fonts and the printer fonts on your computer. To do this, follow the instructions from the font manufacturer.

### Downloading printer fonts to the DocuColor 40 CP

In general, each time you print from within a Mac OS application, the application automatically downloads any fonts used in your document that are not already installed on the DocuColor 40 CP, as long as the printer fonts are installed in your System Folder. These fonts remain in the DocuColor 40 CP only until your document has printed. If you print the same document again, your application must download the fonts again.

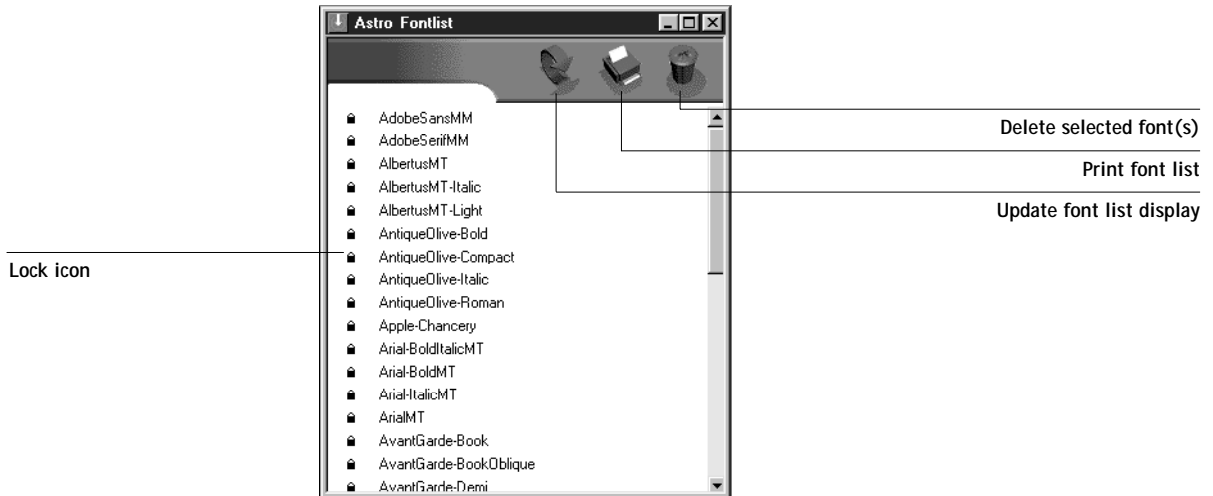
If you regularly use one or more fonts from Windows or Mac OS applications that are not already installed in the DocuColor 40 CP, you can save time by downloading them to the DocuColor 40 CP hard disk with Downloader. Fonts you download to the DocuColor 40 CP hard disk remain installed until they are removed no matter how many times the DocuColor 40 CP is turned off and on. You'll probably want to download fonts you use on a regular basis to the DocuColor 40 CP hard disk.

Before you download PostScript or EPS files with Downloader, make sure that all fonts included in your file are installed in the DocuColor 40 CP or embedded in your file; otherwise the text in these fonts will not print correctly and may not print at all. For PDF files, font substitution occurs automatically for fonts not installed on the DocuColor 40 CP. Two multiple master fonts (a serif font and a sans serif font) stored on the DocuColor 40 CP are used exclusively for substitution with PDF files.

---

**TO VIEW FONT INFORMATION, UPDATE, PRINT, AND DELETE FONTS:**

1. Choose Font List from the File menu or click the Font List button.



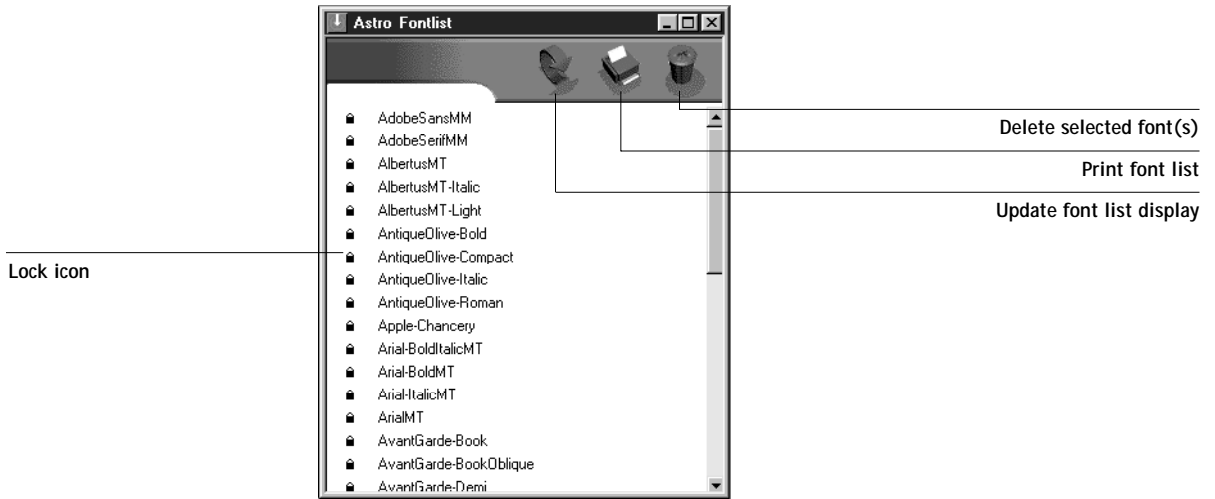
2. To refresh the font list display, click the Update icon.
3. To print the font list, click the Print icon.
4. To delete a font, select it in the font list and click the Delete icon. Shift-click to select multiple fonts. Ctrl-click to select multiple non-sequential fonts.

**NOTE:** The 136 printer fonts included with the DocuColor 40 CP (resident fonts) are locked. Locked fonts appear with a lock icon next to the name and cannot be deleted.



# 4

## 4-9 Using Downloader



# 4

4-10

Downloading Files and Fonts

## Chapter 5: Monitoring Print Jobs

The DocuColor 40 CP WebTools include two tools that allow you to monitor print jobs. The access privileges for these tools depend on the conditions implemented by your site administrator.

### WebTools

WebTools reside on the DocuColor 40 CP but can be accessed over the network from a variety of platforms. The DocuColor 40 CP has a home page that lets remote users view server functions and manipulate jobs. For an overview of WebTools and information on how to access them, see the *Job Management Guide*. This chapter describes only the Status and WebLink WebTools.

The Status WebTool does not require any special access privileges. If the administrator has enabled Web Services in Setup and has provided you with the IP address of the DocuColor 40 CP, you can use the Status WebTool to monitor the status of print jobs as they are rasterized and printed.

WebSpooler provides the capability to view and control the flow of print jobs to the DocuColor 40 CP. If the administrator has set Administrator and Operator passwords in Setup, you need one of these passwords to perform most WebSpooler functions. For information on WebSpooler, see the *Job Management Guide*.

---

#### TO ACCESS WEBTOOLS:

1. Start up your Internet browser application.  
See *Getting Started* for information about supported platforms and browsers.
2. Enter the IP address or the DNS name of the DocuColor 40 CP.  
Check with the operator or administrator for this information.

3. If a Log In dialog box appears, select Guest and click OK.

The Log In dialog box appears only if the administrator has set Administrator or Operator passwords. Guest access is sufficient to use the Status and WebLink WebTools as described in this chapter.

4. When the DocuColor 40 CP WebTools home page appears, click to select one of the WebTools.

Move the cursor over the buttons to display information about the selections.

### Checking DocuColor 40 CP status with the Status WebTool

You can use the Status WebTool to see what jobs are currently processing and printing. To access the Status WebTool, point your browser to the DocuColor 40 CP WebTools home page and click Status. The current RIP Status and Printer Status appear in the window.



To open a new browser window for the Status display, click Float. You can then close other browser windows and leave the Status window open to continue checking the status of the DocuColor 40 CP. As long as you keep the Status window open, it is dynamically updated.

To obtain more information about the status of jobs, use WebSpooler. For information about it, see the *Job Management Guide*.

### Accessing information with the WebLink WebTool

The WebLink button on the DocuColor 40 CP WebTools home page provides a link to another web page, provided you have a valid Internet connection. The administrator at your site can set the WebLink destination. Check your DocuColor 40 CP WebLink for any information available there.

## Appendix A: Print Options

Print options give you access to the special features of the DocuColor 40 and the DocuColor 40 CP. Print options can be specified in several places—in DocuColor 40 CP Setup, in WebSetup, from the printing application, from Downloader, and from WebSpooler. The table in this appendix briefly describes each print option, gives its default setting, and provides information on any constraints or requirements in effect.

### Where to set print options

- During Setup or WebSetup

Some settings are specified during Setup by the administrator. For information on the current default settings, check with the operator or the administrator.

- From applications

With the Adobe PostScript printer drivers (included in your user software), you can specify and override job settings when you print a job. See Chapter 1, “Printing from Windows Computers” and Chapter 2, “Printing from Mac OS Computers” for information about specifying job settings from applications.

**NOTE:** The job settings you specify can be overridden by the operator from the WebSpooler.

- From Downloader

Only a few settings—Page Range (for PDF files only), Copies, and Brightness—can be specified when printing jobs with Downloader. To change options in Downloader, select the job in the Files to be Downloaded (Windows) or Files to Download (Mac OS) list and click Options. For more information, see Chapter 4, “Downloading Files and Fonts.”

- Overrides from WebSpooler

To change job settings from WebSpooler, double-click a job to display the Override Print Settings dialog box. For more information, see the *Job Management Guide*.



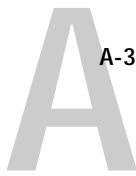
## Print options and override hierarchy

In the following table, the default printer driver settings (PPD defaults) are underlined. The Printer's Default setting indicates that a default has been specified in DocuColor 40 CP Setup. To find out about the current Setup defaults, print the Configuration page from the DocuColor 40 CP Control Panel.

The override hierarchy is as follows:

- A user's printer driver settings override the DocuColor 40 CP Setup settings.
- Settings made from WebSpooler override the user's printer driver settings.

Option and settings: (Default setting is underlined)	Description:	Requirements, constraints, and information:
Brightness 85% Lightest/90% Lighter/ 95% Light/ <u>100% Normal</u> /105% Dark/ 110% Darker/ 115% Darkest	Select 85% for a substantially lighter image, 115% for a substantially darker image, or one of the settings in between.	
CMYK Simulation <u>Printer's Default</u> /SWOP-Coated/DIC/ Euroscale/Custom-1/Custom-2/ Custom-3/Custom-4/Custom-5/None/ Match Copy	Select a CMYK simulation target to use for the job.	See the <i>Color Guide</i> for more information.
CMYK Simulation Method <u>Printer's Default</u> /Quick/Full	Select Quick to apply one-dimensional transfer curves that adjust output density. Select Full to apply four-dimensional transfer curves that adjust hue as well as output density.	See the <i>Color Guide</i> for more information.
Collation <u>Collated</u> /Uncollated	For a multiple-copy, multiple-page job, specify whether or not to collate the job.	
Color Mode <u>CMYK</u> /Grayscale	Specify the color mode for the current print job. Select CMYK for a full-color document or Grayscale for a grayscale or black-and-white document.	



Option and settings: (Default setting is underlined)	Description:	Requirements, constraints, and information:
Combine Separations <u>Off</u> /On	When printing separations from a desktop publishing application: Select <b>On</b> to combine separations on a single page. Select <b>Off</b> to view separations as four individual grayscale pages, each representing one color plate.	See page A-6 for more information.
Copier Mode <u>Text Enhancement</u> /Photo/Map	Select <b>Text Enhancement</b> or <b>Photo</b> if the file is a photograph. Select <b>Map</b> if the file is a combination of text and photographs.	
Copies <u>1</u> - 999	Specify the number of copies of the job to print.	
Duplex <u>Off</u> /Top-Top/Top-Bottom	Select <b>Off</b> for simplex (single sided) printing, select <b>Top-Top</b> for duplex (double sided) printing with both sides using the same top edge, or select <b>Top-Bottom</b> for duplex printing with the back side upside down.	If the Suspend Printing command is used during printing of a duplex job, printing cannot be resumed—the job must be resent.
Face Down Printing <u>No</u> /Yes	Select <b>No</b> to print your documents on the top of the paper, select <b>Yes</b> to print your documents on the bottom of the paper (the document will output from the copier with a blank page facing up and the text facing down).	
Instructions	Use this field to enter instructions to the operator about the job (see also Notes 1 and Notes 2).	The instructions field has a 128-character limit.
Media Type (Paper Type) <u>Plain Paper</u> /Thick Paper/Transparency/ Interleaved/Opaque Film	Specify the type of media on which to print the job. Select <b>Interleaved</b> if you will be printing multiple transparencies with blank paper separators.	
Notes 1 and Notes 2	Use one or both of these fields to enter special information about the job (see also Instructions).	The Notes 1 and Notes 2 fields each have a 32-character limit.



Option and settings: (Default setting is underlined)	Description:	Requirements, constraints, and information:
(Other) Gamma <u>Printer's Default</u> /1.0/1.2/1.4/1.6/1.8/ 2.0/2.2/2.4/2.6/2.8/3.0	Specify a source gamma value for printing RGB images, objects, and text.	To enable this option, RGB Source must be set to Other. See the <i>Color Guide</i> for more information.
(Other) Phosphors <u>Printer's Default</u> /Hitachi EBU/ Hitachi-Ikegami/NTSC/Radius Pivot/ SMPTE/Trinitron	Specify a source monitor phosphors value for printing RGB images, objects, and text.	To enable this option, RGB Source must be set to Other. See the <i>Color Guide</i> for more information.
(Other) White Point <u>Printer's Default</u> /5000 K (D50)/ 5500 K/6500 K (D65)/7500 K/9300 K	Specify a source white point value for printing RGB images, objects, and text.	To enable this option, RGB Source must be set to Other. If you set this option to anything other than Printer's Default, set the Rendering Style option to Solid Color for best results. See the <i>Color Guide</i> for more information.
Page Order Forward/ <u>Reverse</u>	Select Forward for front-to-back output or Reverse for back-to-front output.	
Paper Size <u>Letter</u> /A4/11 x 17/A3/12x18/Legal/ Legal 13/B4/B5/A6/SEF Letter/ SEF A4/SEF B5/SEF 8x10/8x10/9x11/ 9x12/Docupac/Custom 1/Custom 2/ Custom 3	Specify the size of the paper on which to print the document. Custom paper sizes can be defined with Mac OS or Windows computers using the Adobe PostScript Printer Driver provided with your DocuColor 40 CP user software.	For instructions on how to define custom paper sizes, see Chapters 2 and 3.
Paper Source <u>Auto Select</u> /Tray 1/Tray 2/Tray 3/ Bypass Tray	Specify the source for the media on which to print the job.	See page A-8 for more information.
Rendering Style <u>Photographic</u> / <u>Presentation</u> / Solid Color/None	Specify a color rendering dictionary (CRD) to be used when you print RGB images, objects, and text.	The Color Mode option must be set to CMYK. The Rendering Style option has no effect on CMYK data. See page A-8 and the <i>Color Guide</i> for more information.





Option and settings: (Default setting is underlined)	Description:	Requirements, constraints, and information:
RGB Source <u>Printer's Default</u> /EFIRGB/sRGB (PC)/ Apple Standard/Other/Off	Specify a source color space definition for printing RGB images, objects, and text.	See page A-8 and the <i>Color Guide</i> for more information.
Save Fast Reprint <u>Off</u> /On	Specify whether or not to save the job's raster data to disk after printing, so the data will be available later for reprinting (without reRIPping).	
Scale <u>100%</u> /200%/150%/75%/50%	Specify the percentage at which to print the job.	See page A-9 for more information.
Slip Sheet <u>Off</u> /On	Specify whether to insert a slip sheet between copies of multiple-copy jobs.	
Sorter <u>Off</u> /On	Specify whether or not to sort the job.	If the Suspend Printing command is used during printing of a sort job, printing cannot be resumed—the job must be resent. The Slip Sheet option must be set to Off to set this option to On.
Stapler <u>Off</u> /On	Specify whether or not to staple the job.	If the Suspend Printing command is used during printing of a staple job, printing cannot be resumed—the job must be resent.

## More information about print options

The following sections provide additional information about print options. See the table above for information on the settings, requirements, and constraints in effect for these options.

### CMYK Simulation

CMYK Simulation allows you to change the simulation goal for the current print job *only*. As the job begins processing, the simulation goal selected in CMYK Simulation is applied before printing.

**NOTE:** Choosing Printer's Default results in the job being printed with the simulation goal currently set on the DocuColor 40 CP.

**SWOP-Coated**—Uses the United States press standard.

**DIC**—Uses the Japanese press standard.

**Euroscale**—Uses the European press standard.

**Custom-1 (2, 3, 4, 5)**—Uses a custom simulation goal. Before selecting this setting, you are required to create a new simulation goal with Print Calibrator and name the simulation goal exactly as it appears in the options list.

**None**—Uses no simulation goal. Select this setting when the CMYK data for your job has already been separated for your specific printer (for example, when using the Color Management System built into your computer to convert the CMYK data to the printer's color space).

**Match Copy**—Uses no calibration or simulation goal. Select this setting when you want to bypass DocuColor 40 CP calibration and simulation.

For more information about calibration, see the *Job Management Guide*.

### Combine Separations

The Combine Separations option specifies whether to combine color separations created in desktop publishing applications on a single page to simulate printing on a press from film separations. It allows you to proof overprinting, trapping, and other four-color printing effects before having film separations created. It also enables you to combine Desktop Color Separations (DCS) format files to print them at full resolution instead of printing the low-resolution master file.

Your job must have been printed as color separations or DCS format when you printed it from your application. If you did not print the job in this manner, the Combine Separations option has no effect.

**NOTE:** This option is supported only for Adobe PageMaker and QuarkXPress.

## Duplex

All duplex printing features are available only with plain paper media type.

### TO PRINT DUPLEX PAGES:

1. Choose Print in your application, and locate the Duplex print option.

The location of DocuColor 40 CP print options varies, depending on the printer driver you are using.

2. Choose one of the Duplex settings:

**Top-Top**—Prints the top of the image on side 1 on the same edge of the page as the top of the image on side 2.

**Top-Bottom**—Prints the top of the image on side 1 on the opposite edge of the page from the top of the image on side 2.

The following table shows how the Duplex settings correspond to printed output:

	Top-Top	Top-Bottom
Portrait		
Landscape		

### Page Order

If you print a job consisting of many pages with the Page Order option set to Reverse, the job may print in sections that have to be manually rearranged after printing. For example, if you print a 450-page document in reverse order, the DocuColor 40 CP might divide the job into three portions, first printing page 150 to page 1, then page 300 to page 151, and finally page 450 to page 301.

### Paper Source

If you choose the Auto Select setting, the copier prints from any tray containing the paper size needed for the job. This setting also allows the copier to automatically switch between trays, if the current tray becomes empty, while continuing to print.

### Rendering Style

Use this option to select a default color rendering dictionary (CRD) to be used when you print RGB images, objects, and text.

**Photographic**—Optimizes the range of colors on the DocuColor 40 CP to produce the best results for photographic or bitmapped images.

**Presentation**—Optimizes the output of pure, saturated colors such as those used in business presentations. It treats continuous tone images in the same way as the Photographic CRD does.

**Solid Color**—Most useful for printing spot colors such as those found in company logos or corporate charts and graphics. Provides the best color accuracy for images using PANTONE colors. This setting is recommended when the (Other) White Point option is set to anything other than Printer's Default.

For information on color rendering and color management, see the *Color Guide*.

### RGB Source

This option is used to specify a source color space for RGB data.

**EFIRGB**—Optimal source space for printing to the DocuColor 40 CP Color Server. This setting provides consistent output across platforms.

**sRGB (PC)**—Specifies the source space of a generic Windows computer monitor.

**Apple Standard**—Specifies the source space of a Mac OS computer monitor.

**Other**—Allows you to specify a custom RGB source setting using the (Other) Gamma, (Other) Phosphors, and (Other) White Point print options.

For information on source color space and color management, see the *Color Guide*.



### **Scale**

The operator can specify a scaling override, but the override is applied to the scaling value already set in the active job. For example, if a user sends a job with a scaling value of 50% and the operator specifies a Scale override of 200%, the job is printed at 100% of the original document size, that is, 50% of 200%.

### **Sorter**

Sorting is supported on color copiers with a sorter unit attached.

**Off**—Disables the sorter

**On**—Copies of a complete job are sorted and output into one of 20 bins, arranged in page order.

### **Stapler**

**Off**—Disables the stapler.

**On**—The job is stapled with one staple along the corner of the page edge that first exits the copier.



## Appendix B: Font List

This appendix lists the built-in printer fonts included with your DocuColor 40 CP.

### Printer fonts

Listed below are the 136 built-in printer fonts on the DocuColor 40 CP.

In addition to the fonts listed below, two Adobe Multiple Master fonts are included and are used for font substitution in PDF files.

**NOTE:** For Mac OS computers, install the corresponding screen fonts from the User Software CD. For instructions, see *Getting Started*.

### Adobe Type 1 fonts

The DocuColor 40 CP includes 117 Adobe Type 1 fonts:

- The Mac OS column lists the name as it appears on the Font menu on a Mac OS computer. For example, in most applications, to use “Bodoni-Bold,” choose Bodoni Bold from the Font menu.
- The Windows menu name is the name as it appears on the Font menu on a Windows computer. The style refers to the style that must be selected in the application to access the particular PostScript font. For example, to use “Bodoni-Bold,” choose Bodoni from the Font menu and Bold from the Style menu.

PostScript name:	Mac OS menu name:	Windows menu name, style:
AlbertusMT-Light	Albertus MT Lt	Albertus MT Lt
AlbertusMT	Albertus MT	Albertus MT
AlbertusMT-Italic	Albertus MT It	Albertus MT, Italic
AntiqueOlive-Roman	Antique Olive Roman	Antique Olive Roman
AntiqueOlive-Bold	Antique Olive Bold	Antique Olive Roman, Bold
AntiqueOlive-Italic	Antique Olive Italic	Antique Olive Roman, Italic
AntiqueOlive-Compact	Antique Olive Compact	Antique Olive Compact
AvantGarde-Book	Avant Garde	AvantGarde
AvantGarde-Demi	Avant Garde Demi	AvantGarde, Bold
AvantGarde-BookOblique	Avant Garde BookOblique	AvantGarde, Italic



## B-2 Font List

PostScript name:	Mac OS menu name:	Windows menu name, style:
AvantGarde-DemiOblique	Avant Garde DemiOblique	AvantGarde, Bold Italic
Bodoni	Bodoni	Bodoni
Bodoni-Bold	Bodoni Bold	Bodoni, Bold
Bodoni-Italic	Bodoni Italic	Bodoni, Italic
Bodoni-BoldItalic	Bodoni BoldItalic	Bodoni, Bold Italic
Bodoni-Poster	Bodoni Poster	Bodoni Poster
Bodoni-PosterCompressed	Bodoni PosterCompressed	Bodoni PosterCompressed
Bookman-Light	Bookman	Bookman
Bookman-Demi	Bookman Demi	Bookman, Bold
Bookman-LightItalic	Bookman LightItalic	Bookman, Italic
Bookman-DemiItalic	Bookman DemiItalic	Bookman, Bold Italic
Carta	Carta	Carta
Clarendon-Light	Clarendon Light	Clarendon Light
Clarendon	Clarendon	Clarendon
Clarendon-Bold	Clarendon Bold	Clarendon, Bold
CooperBlack	Cooper Black	Cooper Black
CooperBlack-Italic	Cooper Black Italic	Cooper Black, Italic
Copperplate-ThirtyThreeBC	Copperplate33bc	Copperplate33bc
Copperplate-ThirtyTwoBC	Copperplate32bc	Copperplate32bc
Coronet	Coronet	Coronet
Courier	Courier	Courier
Courier-Bold	Courier Bold	Courier, Bold
Courier-Oblique	Courier Oblique	Courier, Italic
Courier-BoldOblique	Courier BoldOblique	Courier, Bold Italic
Eurostile	Eurostile	Eurostile
Eurostile-Bold	Eurostile Bold	Eurostile Bold
Eurostile-ExtendedTwo	Eurostile ExtendedTwo	Eurostile ExtendedTwo
Eurostile-BoldExtendedTwo	Eurostile BoldExtendedTwo	Eurostile ExtendedTwo, Bold
GillSans	GillSans	GillSans
GillSans-Bold	GillSans Bold	GillSans, Bold
GillSans-Italic	GillSans Italic	GillSans, Italic
GillSans-BoldItalic	GillSans BoldItalic	GillSans, Bold Italic
GillSans-Light	GillSans Light	GillSans Light
GillSans-LightItalic	GillSans LightItalic	GillSans Light, Italic





PostScript name:	Mac OS menu name:	Windows menu name, style:
GillSans-Condensed	GillSans Condensed	GillSans Condensed
GillSans-BoldCondensed	GillSans BoldCondensed	GillSans Condensed, Bold
GillSans-ExtraBold	GillSans ExtraBold	GillSans ExtraBold
Goudy	Goudy	Goudy
Goudy-Bold	Goudy Bold	Goudy, Bold
Goudy-Italic	Goudy Italic	Goudy, Italic
Goudy-BoldItalic	Goudy BoldItalic	Goudy, Bold Italic
Goudy-ExtraBold	Goudy ExtraBold	Goudy ExtraBold
Helvetica	Helvetica	Helvetica
Helvetica-Bold	Helvetica Bold	Helvetica, Bold
Helvetica-Oblique	Helvetica Oblique	Helvetica, Italic
Helvetica-BoldOblique	Helvetica BoldOblique	Helvetica, Bold Italic
Helvetica-Narrow	Helvetica Narrow	Helvetica-Narrow
Helvetica-Narrow-Bold	Helvetica Narrow Bold	Helvetica-Narrow, Bold
Helvetica-Narrow-Oblique	Helvetica Narrow Oblique	Helvetica-Narrow, Italic
Helvetica-Narrow-BoldOblique	Helvetica Narrow BoldObl	Helvetica-Narrow, Bold Italic
Helvetica-Condensed	Helvetica Condensed	Helvetica Condensed
Helvetica-Condensed-Bold	Helvetica CondensedBold	Helvetica Condensed, Bold
Helvetica-Condensed-Oblique	Helvetica CondensedOblique	Helvetica Condensed, Italic
Helvetica-Condensed-BoldObl	Helvetica CondensedBoldObl	Helvetica Condensed, Bold Italic
JoannaMT	Joanna MT	Joanna MT
JoannaMT-Bold	Joanna MT Bd	Joanna MT, Bold
JoannaMT-Italic	Joanna MT It	Joanna MT, Italic
JoannaMT-BoldItalic	Joanna MT Bd It	Joanna MT, Bold Italic
LetterGothic	Letter Gothic	Letter Gothic
LetterGothic-Bold	Letter Gothic Bold	Letter Gothic, Bold
LetterGothic-Slanted	Letter Gothic Slanted	Letter Gothic, Italic
LetterGothic-BoldSlanted	Letter Gothic BoldSlanted	Letter Gothic, Bold Italic
LubalinGraph-Book	Lubalin Graph	LubalinGraph
LubalinGraph-Demi	Lubalin Graph Demi	LubalinGraph, Bold
LubalinGraph-BookOblique	Lubalin Graph BookOblique	LubalinGraph, Italic
LubalinGraph-DemiOblique	Lubalin Graph DemiOblique	LubalinGraph, Bold Italic
Marigold	Marigold	Marigold
MonaLisa-Recut	Mona Lisa Recut	Mona Lisa Recut

PostScript name:	Mac OS menu name:	Windows menu name, style:
NewCenturySchlbk-Roman	New Century Schlbk	NewCenturySchlbk
NewCenturySchlbk-Bold	New Century Schlbk Bold	NewCenturySchlbk, Bold
NewCenturySchlbk-Italic	New Century Schlbk Italic	NewCenturySchlbk, Italic
NewCenturySchlbk-BoldItalic	New Century Schlbk BoldIt	NewCenturySchlbk, Bold Italic
Optima	Optima	Optima
Optima-Bold	Optima Bold	Optima, Bold
Optima-Italic	Optima Italic	Optima, Italic
Optima-BoldItalic	Optima BoldItalic	Optima, Bold Italic
Oxford	Oxford	Oxford
Palatino-Roman	Palatino	Palatino
Palatino-Bold	Palatino Bold	Palatino, Bold
Palatino-Italic	Palatino Italic	Palatino, Italic
Palatino-BoldItalic	Palatino BoldItalic	Palatino, Bold Italic
StempelGaramond-Roman	StempelGaramond Roman	StempelGaramond Roman
StempelGaramond-Bold	StempelGaramond Bold	StempelGaramond Roman, Bold
StempelGaramond-Italic	StempelGaramond Italic	StempelGaramond Roman, Italic
StempelGaramond-BoldItalic	StempelGaramond BoldItalic	StempelGaramond Roman, Bold Italic
Symbol	Symbol	Symbol
Tekton	Tekton	Tekton
Times-Roman	Times	Times
Times-Bold	Times Bold	Times, Bold
Times-Italic	Times Italic	Times, Italic
Times-BoldItalic	Times BoldItalic	Times, Bold Italic
Univers-Extended	Univers Extended	Univers Extended
Univers-BoldExt	Univers BoldExt	Univers Extended, Bold
Univers-ExtendedObl	Univers ExtendedObl	Univers Extended, Italic
Univers-BoldExtObl	Univers BoldExtObl	Univers Extended, Bold Italic
Univers-Light	Univers 45 Light	Univers 45 Light
Univers-Bold	Univers 65 Bold	Univers 45 Light, Bold
Univers-LightOblique	Univers 45 LightOblique	Univers 45 Light, Italic
Univers-BoldOblique	Univers 65 BoldOblique	Univers 45 Light, Bold Italic
Univers	Univers 55	Univers 55
Univers-Oblique	Univers 55 Oblique	Univers 55, Italic

PostScript name:	Mac OS menu name:	Windows menu name, style:
Univers-CondensedBold	Univers 67 CondensedBold	Univers 47 CondensedLight, Bold
Univers-CondensedBoldOblique	Univers 67 CondensedBoldObl	Univers 47 CondensedLight, Bold Italic
Univers-Condensed	Univers 57 Condensed	Univers 57 Condensed
Univers-CondensedOblique	Univers 57 CondensedOblique	Univers 57 Condensed, Italic
ZapfChancery-MediumItalic	Zapf Chancery	ZapfChancery
ZapfDingbats	Zapf Dingbats	ZapfDingbats

## TrueType fonts

The DocuColor 40 CP includes 19 TrueType fonts:

PostScript name:	Mac OS menu name:	Windows menu name, style:
Apple-Chancery	Apple Chancery	Apple Chancery
Arial-BoldItalicMT	Arial Bold Italic	Arial, Bold Italic
Arial-BoldMT	Arial Bold	Arial, Bold
Arial-ItalicMT	Arial Italic	Arial, Italic
ArialMT	Arial	Arial
Chicago	Chicago	Chicago
Geneva	Geneva	Geneva
HoeflerText-Black	Hoefler Text Black	Hoefler Text Black
HoeflerText-BlackItalic	Hoefler Text Black	Hoefler Text Black, Italic
HoeflerText-Italic	Hoefler Text	Hoefler Text, Italic
HoeflerText-Ornaments	Hoefler Text Ornaments	Hoefler Text Ornaments
HoeflerText-Regular	Hoefler Text	Hoefler Text
Monaco	Monaco	Monaco
New York	New York	New York
TimesNewRomanPS-BoldMT	Times New Roman Bold	Times New Roman, Bold
TimesNewRomanPS-BoldItalicMT	Times New Roman Bold Italic	Times New Roman, Bold Italic
TimesNewRomanPS-ItalicMT	Times New Roman Italic	Times New Roman, Italic
TimesNewRomanPSMT	Times New Roman	Times New Roman
Wingdings-Regular	Wingdings	Wingdings



## Appendix C: Troubleshooting

This appendix provides troubleshooting tips.

### Maintaining optimal system performance

The DocuColor 40 CP does not require maintenance. Beyond the routine requirements of servicing and maintaining the copier and replenishing consumables there are a few things you can do to improve the overall performance of your system:

- Reduce unnecessary two-way communication.

If you notice that the server is frequently too busy to receive jobs, it may be because several users are running DocuColor 40 CP utilities that are updated often. Large numbers of remote users running Downloader or WebTools may have a significant effect on DocuColor 40 CP performance.

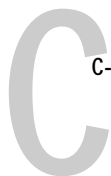
- Reduce unnecessary server connections. If you use a second or third DocuColor 40 CP Color Server on an occasional basis, performance will be improved if you log off when you are not using it.
- Avoid printing with the server “Disk full” warning.

If you see this warning, ask the operator to use WebSpooler to delete jobs that have been held for a long time and are not likely to be needed. Avoid this condition by deleting old jobs on a regular basis. The date associated with a job is the original date it was sent.

Even when the disk is full, 128KB of disk space is reserved for printing a tabloid size job, but printing proceeds only when the oldest printed job is deleted from the Printed queue (Print area in WebSpooler Job List window).

### Troubleshooting

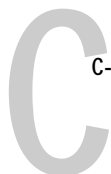
In case of problems, and before you call for service, check the guidelines in this section. If you are unable to resolve the problem, make a note of the error condition and contact your authorized service/support center.



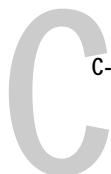
This section provides some troubleshooting guidelines should a problem arise. If you are unable to resolve a problem after referring to this section, contact your site operator or administrator.

### General printing problems

If this happens:	Try this:
You cannot select or view one of the print connections.	<ul style="list-style-type: none"><li>• Have your system administrator enable the print connection in Setup.</li></ul>
Printing ties up your computer for too long.	<ul style="list-style-type: none"><li>• Print to a queue instead of to the Direct connection. When you print to a queue, the job is stored on the DocuColor 40 CP until it can be processed and printed; when you print to the Direct connection, the job cannot be sent to the DocuColor 40 CP until the previous job is finished processing, so you must wait longer to use your computer.</li></ul>
Special paper or transparency options are dimmed.	<ul style="list-style-type: none"><li>• Select a Paper Source that supports the media type you are using.</li></ul>
Message requests a paper size that you don't have.	<ul style="list-style-type: none"><li>• Cancel the job and do one of the following: If you are printing a PostScript file, ask the administrator to set the Convert Paper Sizes setting in PS Setup to convert the job to a paper size you do have. You can do this to convert between US and metric paper sizes. If you are printing a file from an application, change the page size in the Page Setup dialog box.</li></ul>
You cannot print with QuarkXPress 3.32 using the AdobePS 8.5.1 driver on a Mac OS computer.	<ul style="list-style-type: none"><li>• Remove the file called Balloon Help from your QuarkXPress application folder and relaunch QuarkXPress.</li></ul>



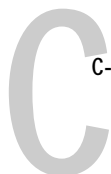
If this happens:	Try this:
<p>DocuColor 40 CP doesn't respond to a Print command.</p>	<ul style="list-style-type: none"><li>• Has someone disconnected the copier by selecting Suspend Printing from the Functions menu?  If the administrator or operator has selected Suspend Printing on the DocuColor 40 CP Control Panel to interrupt printing (so that someone can make a color copy, for example), your print job will not resume until someone selects Resume Printing from the Functions menu on the Control Panel.</li><li>• Did you select the DocuColor 40 CP as the current printer?  Before printing, you must select the DocuColor 40 CP as the current printer from your Mac OS, Windows, or UNIX workstation.</li><li>• Make sure that the copier is switched on.  Someone may have turned the copier off, or the Automatic Power-Off or Power Saver mode function may have engaged. Even with the copier off, the DocuColor 40 CP appears in the Chooser as long as the DocuColor 40 CP itself is turned on.</li><li>• If you are printing over an IPX (Novell) network, verify through the PCONSOLE utility that the job was sent to the Novell queue and that the queue is being used by the DocuColor 40 CP.</li><li>• Make sure that the job does not contain a PostScript error.  Check with the operator, or use WebSpooler to check the job's status. A job containing a PostScript error appears in red in the WebSpooler displays.</li></ul>
<p>Jobs sent to the parallel port do not print.</p>	<ul style="list-style-type: none"><li>• Review the procedures provided in <i>Getting Started</i> on how to prepare the DocuColor 40 CP and your Windows 95 computer for parallel port printing.  Also see your Windows 95 documentation.</li><li>• Ask the administrator to increase the parallel "Port Timeout in Seconds" on the DocuColor 40 CP Control Panel.</li><li>• Ask the administrator to change the Ignore EOF Character setting on the DocuColor 40 CP Control Panel.  If you will be printing ASCII format PostScript only, set Ignore EOF Character to No; if you will be printing Binary format PostScript, set it to Yes.</li><li>• If you print using the DOS copy command, make sure to use the /b option when printing binary files.</li><li>• If the PostScript printer driver that you are using lets you select bidirectional communication, make sure that it is disabled.  This is generally set from the Properties dialog box for the printer.</li></ul>



## Problems with print quality

If this happens:	Try this:
Print settings for your job output do not match the settings you gave.	<ul style="list-style-type: none"><li>• Make sure that you did not override the setting for the job in another place. For information about options and overrides, see Appendix A "Print Options."</li></ul>
You get poor printing results.	<ul style="list-style-type: none"><li>• Does your application require one of DocuColor 40 CP printer description files? If you're printing from an application such as Adobe Separator or PageMaker, MacroMedia FreeHand, or QuarkXPress, make sure that the DocuColor 40 CP printer description file is installed correctly. For information about installing these files, see <i>Getting Started</i>.</li><li>• Use a different Copier Mode option. For DocuColor 40 CP Color Server systems, the default Copier Mode setting is Text Enhancement. Try changing the setting to Photo and see if the results improve.</li><li>• Make sure the system has been calibrated.</li></ul>
Separations do not combine properly.	<ul style="list-style-type: none"><li>• Make sure that the file was initially created as separations.</li><li>• If you are printing separations or a DCS format file, set the Combine Separations print option to On. With Combine Separations On, all four colors will be printed on a single page; with Combine Separations Off, four grayscale pages will print to simulate four single-color plates.</li></ul>
The registration or colors of an image are not what you expected.	<ul style="list-style-type: none"><li>• Ask the operator to print a test page or make a test copy with the copier. The problem may be with the copier. If your test page or copy show that the copier is working properly, correct the problem within your application software. If the test page or copy are wrong, your copier may need to be calibrated or adjusted in some other way.</li></ul>
Your printed file appears too dark.	<ul style="list-style-type: none"><li>• Adjust the Brightness option. You can use the Brightness option when printing from an application or from Downloader to lighten your image whenever you print a PostScript or Encapsulated PostScript (EPS) file.</li></ul>
Color output is incorrect.	<ul style="list-style-type: none"><li>• Check with the operator or administrator about the current calibration information. The copier may need to be recalibrated because it has been too long since it was calibrated or because it is using a different target.</li></ul>

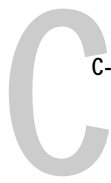




If this happens:	Try this:
Color file prints in black and white.	<ul style="list-style-type: none"><li>• In the Print Options dialog box, make sure that Color/Grayscale or ColorSync Color Matching or PostScript Color Matching is selected (not Black and White).</li><li>• Make sure that the Color Mode selected for the job is CMYK and not Grayscale.</li></ul>
Desktop Color Separations (DCS) format images print incorrectly.	<ul style="list-style-type: none"><li>• Make sure that you selected the correct options to send separations in the application's Print dialog box.</li><li>• Make sure that you have the file for every layer of separation that you are printing.</li><li>• Set the Combine Separations option to On. This combines the high-resolution files for an image and prints them. With Combine Separations Off, the low-resolution master file will print.</li></ul>
QuickDraw fill patterns print as solids.	<ul style="list-style-type: none"><li>• Use the Adobe PostScript Printer driver (or the Apple LaserWriter 8.3 or later printer driver).</li></ul>

## Problems with Downloader

If this happens:	Try this:
You cannot connect to the DocuColor 40 CP from Downloader.	<ul style="list-style-type: none"><li>• Make sure that the DocuColor 40 CP is not being calibrated. If the DocuColor 40 CP is being calibrated, you cannot connect to it. This insures that only one person is calibrating the server at any time and that print jobs do not use unexpected calibration.</li></ul>
You can't print an EPS file using Downloader.	<ul style="list-style-type: none"><li>• Try printing using the "Showpage" option in the Download PostScript File dialog box. The Showpage (after EPS files) option adds a showpage PostScript language command at the end of the print job. Certain applications omit this necessary PostScript language command when they generate EPS files. You'll need to select the Append Showpage option when printing EPS files generated by these applications. If you continue having difficulties printing an EPS file with Downloader, try printing the file from the application in which it was created.</li><li>• Make sure that the job does not contain a PostScript error. Check with the operator, or use WebSpooler to check the job's status. A job containing a PostScript error appears in red in the WebSpooler display.</li></ul>
You have problems downloading a font with Downloader.	<ul style="list-style-type: none"><li>• Check with the administrator to make sure that the Direct connection is enabled. The Direct connection must be used to download fonts. (Files can be downloaded via the Print or Hold queue.)</li></ul>



If this happens:	Try this:
Extra blank page prints after a Downloader job.	<ul style="list-style-type: none"><li>• Turn off the “Showpage (after EPS file)” option. This option adds a special PostScript command that will cause an extra blank page to print if it is not needed.</li></ul>

### Problems with WebTools

If this happens:	Try this:
General problems	<ul style="list-style-type: none"><li>• Clear the cache (Netscape Communicator) or history (Microsoft Internet Explorer).</li></ul>

# Index

## A

Adobe Photoshop, transfer functions 4-6  
Adobe PostScript Printer Driver, *see*  
PostScript printer drivers  
applications, setting print options from 1-4,  
1-8, 1-12, 2-9

## B

Brightness option 4-5, A-1, A-2

## C

cancel command (UNIX) 3-3  
Chooser window (Mac OS), selecting color  
server in 2-1 to 2-4  
CMYK Simulation Method option A-2  
CMYK Simulation option A-2, A-5  
Collation option A-2  
color, troubleshooting output C-4  
Color Mode option A-2  
color rendering dictionaries, *see* CRDs  
color server  
documentation xii  
selecting as current printer 2-1  
Combine Separations option A-3, A-6  
Contone mode xiii  
Copier Mode option A-3, C-4  
Copies option A-3  
CRDs (color rendering dictionaries) A-4

## D

DCS (Desktop Color Separations) files A-3,  
A-6  
default settings, *see* printer default settings  
Desktop Color Separations, *see* DCS  
DIC simulation goal A-6  
Direct connection xiv, 4-4  
not in Chooser (Mac OS) 2-2  
required to download fonts 4-6, C-5

## Downloader

choosing a printer 4-3  
Connection Type option 4-4  
Copies option 4-5  
downloading files or fonts 4-3 to 4-6  
Download Progress bar 4-2  
Font List option 4-3  
Hard Disk area 4-2  
Mac OS 2-9  
printing from 4-3  
Print Status area 4-2  
restriction with parallel port 1-12  
RIP Status area 4-2  
troubleshooting C-5 to C-6  
using from remote workstation 4-1  
Windows 95 1-1  
Windows NT 4.0 1-1  
Duplex option A-3, A-5, A-7

## E

end-of-file (EOF) character 1-12  
EPS files 1-13, 2-9, C-5  
Euroscales simulation goal A-6

## F

File port, saving files to 1-12  
font list  
displaying 4-2  
printing 4-2  
Font List option (Downloader) 4-3  
fonts  
Adobe Type 1 4-6, 4-7, B-1  
downloading and managing 4-1, 4-4,  
4-6, 4-7  
list, displaying 4-8  
locked 4-8  
PostScript B-1  
printer fonts 4-7

- screen fonts (Mac OS) 4-7
  - TrueType 4-6, B-5
- Font Substitution Table 4-6
- Full Color mode xiii

**G**

- Gamma option A-4
- Grayscale mode xiii

**H**

- Hold queue xiv, 2-2, 4-4

**I**

- Instructions field 1-5, 1-9, 2-7, 2-8, A-3

**J**

- Job Log 1-5, 1-9, 2-8
- job overrides
  - CMYK Simulation option A-5
  - Duplex option A-7
  - Sorter option A-9
  - Stapler option A-9
- job settings, *see* print options

**L**

- lock icon 4-8
- lp command 3-2
- lpq command 3-1, 3-2, 3-3
- lpr command 3-1
- lprm command 3-1, 3-3

**M**

- Mac OS
  - PostScript printer drivers 2-5 to 2-9
  - printing 2-1 to 2-9
  - printing with Downloader 2-9, 4-1 to 4-8
  - print options 2-4 to 2-9
- Match Copy simulation goal A-6
- Media Type option 1-2, A-3

**N**

- None simulation goal A-6
- Notes 1 and Notes 2 fields, *see* Notes fields
- Notes fields
  - Mac OS 2-7
  - option A-3
  - Windows 3.1x 1-9
  - Windows 95 1-5

**O**

- operator instructions A-3
- (Other) Gamma option A-4, A-8
- (Other) Phosphors option A-4, A-8
- (Other) White Point option A-4, A-8

**P**

- Page Order option A-4, A-7
- Page Range option A-1
- paper
  - Custom size setting 1-3, 2-5
  - standard sizes supported xiii
- Paper Size option A-4
- Paper Source option 1-2, A-4, A-8
- parallel port
  - printing problems C-3
  - printing with 1-12
- PDF files 1-13, 2-9, 4-1
- performance, optimizing C-1
- Phosphors option A-4
- Photographic rendering style A-4, A-8
- Plain paper A-3
- PostScript
  - downloading files, Mac OS 2-9
  - downloading files, Windows 1-13
  - downloading files with Downloader 4-1
  - printing files from UNIX 3-1
- PostScript printer description files, *see* PPD files
- PostScript printer drivers
  - description xiii
  - for Mac OS 2-5 to 2-9

- for Windows 3.1x 1-7 to 1-9
- for Windows 95 1-1 to 1-5
- for Windows NT 4.0 1-10 to 1-12
- Microsoft PostScript printer driver for
  - Windows NT 4.0 1-10 to 1-12
- PPD (PostScript Printer Description) files
  - defaults A-2
  - description xiii
  - options 1-4, 1-8, 1-12, 2-9
  - Windows 3.1x settings 1-6
  - Windows 95 settings 1-1
- Presentation rendering style A-4, A-8
- printer default settings xiii, A-1 to A-9
- printer driver, *see* PostScript printer drivers
- printing
  - duplex pages A-7
  - font list 4-2
  - from Downloader 2-9, 4-1 to 4-8
  - Mac OS 2-1 to 2-9
  - parallel port 1-12
  - saving files for printing at remote
    - location 1-12
  - specifying trays A-4
  - to File Port 1-12
  - to local port 1-12
  - troubleshooting C-2 to C-6
  - UNIX workstations 3-1 to 3-3
  - Windows 3.1x 1-6 to 1-9
  - Windows 95 1-1 to 1-6
  - Windows 95 1-6
  - Windows NT 4.0 1-10 to 1-12
- printing connections on the network xiv
- print options
  - Mac OS 2-4 to 2-9
  - settings 1-6, A-1 to A-9
  - specific to color server 1-4
  - Windows 3.1x 1-6 to 1-9
  - Windows 95 1-1 to 1-6
  - Windows NT 4.0 1-11 to 1-12
  - see also* printer default settings
- Print queue xiv, 2-2, 4-4

**Q**

- QuarkXPress, printing problems C-2
- queues, access to xiv

**R**

- remote access xi, 4-1
- Rendering Style option A-4
- RGB Source option A-5, A-8

**S**

- Save Fast Reprint option A-5
- Scale option A-5, A-9
- separations, printing A-3
- 'showpage' after EPS files option 4-6
- simulations A-2
- Slip Sheet option A-5
- Solaris 2 3-3
- Solid Color rendering style A-4
- Sorter option A-5, A-9
- Stapler option A-5, A-9
- Status WebTool, *see* WebTools
- SunOS 4 3-3
- Suspend Printing command A-3, A-5
- SWOP-Coated simulation A-6

**T**

- TCP/IP printing 3-1
- thick paper A-3
- Top-Bottom A-7
- Top-Top A-7
- transparency A-3
- trays, printer A-4, A-8
- troubleshooting
  - color output C-4
  - Downloader C-5 to C-6
  - general printing problems C-2 to C-3
  - problems with print quality C-4 to C-5

**U****UNIX**

- BSD (Berkeley Software Distribution)
  - variant of 3-3

- displaying jobs in queue with 3-2
- printing from 3-1 to 3-3
- removing jobs from queue with 3-3
- System V 3-3
- user software xiii

## W

- WebLink, *see* WebTools
- WebSpooler, *see* WebTools
- WebTools
  - accessing xiv, 5-1, 5-2
  - home page 5-2
  - problems with C-6
  - Status 5-1, 5-2
  - WebLink 5-2
  - WebSpooler 1-8, 1-11, 2-9, 5-1, A-1

- White Point option A-4, A-8
- Windows 3.1x
  - PostScript printer driver 1-7 to 1-9
  - printing 1-6 to 1-9
  - print options 1-6 to 1-9
- Windows 95
  - PostScript printer driver 1-1 to 1-5
  - printing 1-1 to 1-6
  - print options 1-1 to 1-6
- Windows NT 4.0
  - PostScript printer driver 1-10 to 1-12
  - printing 1-1, 1-10 to 1-12
  - print options 1-11 to 1-12
- WINS printing 1-1