

Getting Started

FIERY XJ+ 525

ELECTRONICS FOR IMAGING, INC.



Copyright © 1998 Electronics for Imaging, Inc. All rights reserved.

This publication is protected by copyright, and all rights are reserved. No part of it may be reproduced or transmitted in any form or by any means for any purpose without express prior written consent from Electronics for Imaging, Inc., except as expressly permitted herein. Information in this document is subject to change without notice and does not represent a commitment on the part of Electronics for Imaging, Inc.

The software described in this publication is furnished under license and may only be used or copied in accordance with the terms of such license.

Patents: 5,666,436; 5,553,200; 5,543,940; 5,537,516; 5,517,334; 5,506,946; 5,424,754; 5,343,311; 5,212,546; 4,941,038; 4,837,722; 4,500,919

Trademarks

EFI, the EFI logo, Fiery, the Fiery logo, EFICOLOR, and Rip-While-Print are trademarks registered in the U.S. Patent and Trademark Office. Fiery XJ, Fiery SI, Fiery ZX, Fiery X2, Fiery Driven, the Fiery Driven logo, Command WorkStation, AutoCal, Starr Compression, Memory Multiplier, ColorWise, NetWise, and VisualCal are trademarks of Electronics for Imaging, Inc.

All Xerox product names mentioned in this publication are trademarks of the XEROX CORPORATION.

Adobe, the Adobe logo, Adobe Illustrator, PostScript, Adobe Photoshop, Adobe Separator, and Adobe PageMaker are trademarks of Adobe Systems Incorporated, registered in certain jurisdictions. EPS (Encapsulated PostScript) is a trademark of Altsys Corporation. Apple, the Apple logo, AppleShare, AppleTalk, EtherTalk, LaserWriter, and Macintosh are registered trademarks, and MultiFinder is a trademark of Apple Computer, Inc. Microsoft, MS, MS-DOS, and Windows are registered trademarks of Microsoft in the US and other countries. QuarkXPress is a registered trademark of Quark, Inc. Times, Helvetica, and Palatino are trademarks of Linotype AG and/or its subsidiaries. ITC Avant Garde, ITC Bookman, ITC Zapf Chancery, and ITC Zapf Dingbats are registered trademarks of International Typeface Corporation. Ethernet is a registered trademark of Xerox Corporation. NetWare and Novell are registered trademarks and Internetwork Packet Exchange (IPX) is a trademark of Novell, Inc. SyQuest is a registered trademark, in the United States and certain other countries, of SyQuest Technology, Inc. UNIX is a registered trademark of UNIX System Laboratories, a wholly owned subsidiary of Novell, Inc. PANTONE is a registered trademark of Pantone, Inc.

All other terms and product names may be trademarks or registered trademarks of their respective owners, and are hereby acknowledged.

Legal Notices

APPLE COMPUTER, INC. ("APPLE") MAKES NO WARRANTIES, EXPRESS OR IMPLIED, INCLUDING WITHOUT LIMITATION THE IMPLIED WARRANTIES OF MERCHANTABILITY AND FITNESS FOR A PARTICULAR PURPOSE, REGARDING THE APPLE SOFTWARE. APPLE DOES NOT WARRANT, GUARANTEE, OR MAKE ANY REPRESENTATIONS REGARDING THE USE OR THE RESULTS OF THE USE OF THE APPLE SOFTWARE IN TERMS OF ITS CORRECTNESS, ACCURACY, RELIABILITY, CURRENTNESS, OR OTHERWISE. THE ENTIRE RISK AS TO THE RESULTS AND PERFORMANCE OF THE APPLE SOFTWARE IS ASSUMED BY YOU. THE EXCLUSION OF IMPLIED WARRANTIES IS NOT PERMITTED BY SOME STATES. THE ABOVE EXCLUSION MAY NOT APPLY TO YOU.

IN NO EVENT WILL APPLE, ITS DIRECTORS, OFFICERS, EMPLOYEES OR AGENTS BE LIABLE TO YOU FOR ANY CONSEQUENTIAL, INCIDENTAL OR INDIRECT DAMAGES (INCLUDING DAMAGES FOR LOSS OF BUSINESS PROFITS, BUSINESS INTERRUPTION, LOSS OF BUSINESS INFORMATION, AND THE LIKE) ARISING OUT OF THE USE OR INABILITY TO USE THE APPLE SOFTWARE EVEN IF APPLE HAS BEEN ADVISED OF THE POSSIBILITY OF SUCH DAMAGES. BECAUSE SOME STATES DO NOT ALLOW THE EXCLUSION OR LIMITATION OF LIABILITY FOR CONSEQUENTIAL OR INCIDENTAL DAMAGES, THE ABOVE LIMITATIONS MAY NOT APPLY TO YOU. Apple's liability to you for actual damages from any cause whatsoever, and regardless of the form of the action (whether in contract, tort [including negligence], product liability or otherwise), will be limited to \$50.

Restricted Rights Legends

For defense agencies: Restricted Rights Legend. Use, reproduction, or disclosure is subject to restrictions set forth in subparagraph (c)(1)(ii) of the Rights in Technical Data and Computer Software clause at 252.227.7013.

For civilian agencies: Restricted Rights Legend. Use, reproduction, or disclosure is subject to restrictions set forth in subparagraph (a) through (d) of the commercial Computer Software Restricted Rights clause at 52.227-19 and the limitations set forth in Electronics for Imaging, Inc.'s standard commercial agreement for this software. Unpublished rights reserved under the copyright laws of the United States.

Printed in the United States of America on recycled paper.

Part Number: 45003008

CE Mark

The CE marking applied to this product symbolises Rank Xerox's declaration of conformity with the following applicable directives of the European Union as of the dates indicated.

January 1, 1996—Council Directive 70/80/CCO amended by Council Directive 93/68/EEO. Approximation of the laws of the member states related to low voltage equipment.

January 1, 1996—Council Directive 59/336/EEC. Approximation of the laws of the member states related to electromagnetic compatibility.

A full declaration defining the relevant directives and referenced standards can be obtained from your Rank Xerox representative.

WARNING: In order to allow this equipment to operate in proximity to industrial, scientific, and Medical (ISM) equipment, the external radiation from ISM equipment may have to be limited or special migration measures taken.

FCC Information

WARNING: FCC Regulations state that any unauthorized changes or modifications to this equipment not expressly approved by the manufacturer could void the user's authority to operate this equipment.

Class A Compliance

This equipment has been tested and found to comply with the limits for a Class A digital device, pursuant to Part 15 of the FCC Rules. These limits are designed to provide reasonable protection against harmful interference when the equipment is operated in a commercial environment. This equipment generates, and uses, and can radiate radio frequency energy and, if not installed and used in accordance with the instruction manual, may cause harmful interference to radio communications. Operation of this equipment in a residential area is likely to cause interference in which case the user will be required to correct the interference at his own expense.

Industry Canada Class A Notice

This digital apparatus does not exceed the Class A limits for radio noise emissions from digital apparatus as set out in the interference-causing equipment standard entitled, "Digital Apparatus" ICES-003 from Industry Canada.

Avis de Conformation Classe A d l'Industrie Canada

Le présent appareil numérique n'émet pas de bruits radioélectriques dépassant les limites applicables aux appareils numériques de la Classe A prescrites dans la norme sur le matériel brouilleur, "Appareils Numériques" NMB-003 édictée par l'Industrie Canada.

Certificate by Manufacturer/Importer

This is to certify that the FC07 is shielded against radio interference in accordance with the provisions of VFG 243/1991. The German Postal Services have been advised that this device is being put on the market and that they have been given the right to inspect the series for compliance with the regulations.

Bescheinigung des Herstellers/Importeurs

Heirmit wird bescheinigt, dass der FC07 im Uebereinstimmung mit den Bestimmungen der VFG 243/1991 Funk-Entstort ist. Der Deutschen Bundespost wurde das Inverkehrbringen dieses Geraetes angezeigt und die Berechtigung zur Ueberpruefung der Serie auf Einhaltung der Bestimmungen eingeräumt.

RFI Compliance Notice

This equipment has been tested concerning compliance with the relevant RFI protection requirements both individually and on system level (to simulate normal operation conditions). However, it is possible that these RFI Requirements are not met under certain unfavorable conditions in other installations. It is the user who is responsible for compliance of his particular installation.

Dieses Geraet wurde einzeln sowohl als auch in einer Anlage, die einen normalen Anwendungsfall nachbildet, auf die Einhaltung der Funk-entstoerbestimmungen gepueft. Es ist jedoch moeglich, dass die Funk-entstoerbestimmungen unter unguenstigen Umstaenden bei anderen Geraetekombinationen nicht eingehalten werden. Fuer die Einhaltung der Funk-entstoerbestimmungen seigner gesamten Anlage, in der dieses Geraet betrieben wird, ist der Betreiber verantwortlich.

Compliance with applicable regulations depends on the use of shielded cables. It is the user who is responsible for procuring the appropriate cables.

Einhaltung mit betreffenden Bestimmungen kommt darauf an, dass geschirmte Ausfuehrungen gebraucht werden. Fuer die beschaffung richtiger Ausfuehrungen ist der Betreiber verantwortlich.

Software License Agreement

Before using the Software, please carefully read the following terms and conditions. BY USING THIS SOFTWARE, YOU SIGNIFY THAT YOU HAVE ACCEPTED THE TERMS OF THIS AGREEMENT. If you cannot or do not accept these terms, you may return the entire package within ten (10) days to the Distributor or Dealer from which you obtained them for a full refund.

Electronics for Imaging, Inc. grants to you a non-exclusive, non-transferable license to use the software and accompanying documentation ("Software") included with the Fiery XJ you have purchased, including without limitation the PostScript[®] software provided by Adobe Systems Incorporated.

You may:

- a. use the Software solely for your own customary business purposes and solely with Fiery XJ;
- b. use the digitally-encoded machine-readable outline and bitmap programs ("Font Programs") provided with Fiery XJ in a special encrypted format ("Coded Font Programs") to reproduce and display designs, styles, weights, and versions of letters, numerals, characters and symbols ("Typefaces") solely for your own customary business purposes on the display window of the Fiery XJ or monitor used with Fiery XJ;
- c. use the trademarks used by Electronics for Imaging to identify the Coded Font Programs and Typefaces reproduced therefrom ("Trademarks"); and
- d. assign your rights under this Agreement to a transferee of all of your right, title and interest in and to Fiery XJ provided the transferee agrees to be bound by all of the terms and conditions of this Agreement.

You may not:

- a. make use of the Software, directly or indirectly, to print bitmap images with print resolutions of 600 dots per inch or greater, or to generate fonts or typefaces for use other than with Fiery XJ;
- b. make or have made, or permit to be made, any copies of the Software, Coded Font Programs, accompanying documentation or portions thereof, except as necessary for use with the Fiery XJ unit purchased by you; provided, however, that under no circumstances may you make or have made, or permit to be made, any copies of that certain portion of the Software which has been included on the Fiery XJ hard disk drive. You may not copy the documentation;
- c. attempt to alter, disassemble, decrypt or reverse engineer the Software, Coded Font Programs or accompanying documentation.
- d. rent or lease the Software.

Proprietary Rights

You acknowledge that the Software, Coded Font Programs, Typefaces, Trademarks and accompanying documentation are proprietary to Electronics for Imaging and its suppliers and that title and other intellectual property rights therein remain with Electronics for Imaging and its suppliers. Except as stated above, this Agreement does not grant you any right to patents, copyrights, trade secrets, trademarks (whether registered or unregistered), or any other rights, franchises or licenses in respect of the Software, Coded Font Programs, Typefaces, Trademarks or accompanying documentation. You may not adapt or use any trademark or trade name which is likely to be similar to or confusing with that of Electronics for Imaging or any of its suppliers or take any other action which impairs or reduces the trademark rights of Electronics for Imaging or its suppliers. The trademarks may only be used to identify printed output produced by the Coded Font Programs. At the reasonable request of Electronics for Imaging, you must supply samples of any Typeface identified with a trademark.

Confidentiality

You agree to hold the Software and Coded Font Programs in confidence, disclosing the Software and Coded Font Programs only to authorized users having a need to use the Software and Coded Font Programs as permitted by this Agreement and to take all reasonable precautions to prevent disclosure to other parties.

Remedies

Unauthorized use, copying or disclosure of the Software, Coded Font Programs, Typefaces, Trademarks or accompanying documentation will result in automatic termination of this license and will make available to Electronics for Imaging other legal remedies.

Limited Warranty And Disclaimer

Electronics for Imaging warrants that, for a period of ninety (90) days from the date of delivery to you, the Software under normal use will perform without significant errors that make it unusable. Electronics for Imaging's entire liability and your exclusive remedy under this warranty (which is subject to you returning Fiery XJ to Electronics for Imaging or an authorized dealer) will be, at Electronics for Imaging's option, to use reasonable commercial efforts to attempt to correct or work around errors, to replace the Software with functionally equivalent software, or to refund the purchase price and terminate this Agreement. Some states do not allow limitations on duration of implied warranty, so the above limitation may not apply to you.

Except for the above express limited warranty, Electronics for Imaging makes and you receive no warranties or conditions on the Products, express, implied, or statutory, and Electronics for Imaging specifically disclaims any implied warranty or condition of merchantability or fitness for a particular purpose.

For warranty service, please contact your authorized service/support center.

EXCEPT FOR THE ABOVE EXPRESS LIMITED WARRANTY, ELECTRONICS FOR IMAGING MAKES AND YOU RECEIVE NO WARRANTIES OR CONDITIONS ON THE SOFTWARE OR CODED FONT PROGRAMS, EXPRESS, IMPLIED, STATUTORY, OR IN ANY OTHER PROVISION OF THIS AGREEMENT OR COMMUNICATION WITH YOU, AND ELECTRONICS FOR IMAGING SPECIFICALLY DISCLAIMS ANY IMPLIED WARRANTY OR CONDITION OF MERCHANTABILITY OR FITNESS FOR A PARTICULAR PURPOSE. Electronics for Imaging does not warrant that the operation of the software will be uninterrupted or error free or that the Software will meet your specific requirements.

Limitation Of Liability

IN NO EVENT WILL ELECTRONICS FOR IMAGING OR ITS SUPPLIERS BE LIABLE FOR ANY DAMAGES, INCLUDING LOSS OF DATA, LOST PROFITS, COST OF COVER OR OTHER SPECIAL, INCIDENTAL, CONSEQUENTIAL OR INDIRECT DAMAGES ARISING FROM THE USE OF THE SOFTWARE, CODED FONT PROGRAMS OR ACCOMPANYING DOCUMENTATION, HOWEVER CAUSED AND ON ANY THEORY OF LIABILITY. THIS LIMITATION WILL APPLY EVEN IF ELECTRONICS FOR IMAGING OR ANY AUTHORIZED DEALER HAS BEEN ADVISED OF THE POSSIBILITY OF SUCH DAMAGE. YOU ACKNOWLEDGE THAT THE PRICE OF THE UNIT REFLECTS THIS ALLOCATION OF RISK. BECAUSE SOME STATES/JURISDICTIONS DO NOT ALLOW THE EXCLUSION OR LIMITATION OF LIABILITY FOR CONSEQUENTIAL OR INCIDENTAL DAMAGES, THE ABOVE LIMITATION MAY NOT APPLY TO YOU.

Export Controls

You agree that you will not export or re-export the Software or Coded Font Programs in any form without the appropriate United States and foreign government licenses. Your failure to comply with this provision is a material breach of this Agreement.

Government Use

Use, duplication or disclosure of the Software by the United States Government is subject to restrictions as set forth in subdivision (c) (1) (ii) of the Rights in Technical Data and Computer Software clause at DFARS 252.227-7013 or in subparagraphs (c) (1) and (2) of the Commercial Computer Software—Restricted Right Clause at 48 CFR 52.227-19, as applicable.

Third Party Beneficiary

You are hereby notified that Adobe Systems Incorporated, a California corporation located at 345 Park Avenue, San Jose, CA 95110-2704 ("Adobe") is a third-party beneficiary to this Agreement to the extent that this Agreement contains provisions which relate to your use of the Fonts, the Coded Font Programs, the Typefaces and the Trademarks licensed hereby. Such provisions are made expressly for the benefit of Adobe and are enforceable by Adobe in addition to Electronics for Imaging.

General

This Agreement will be governed by the laws of the State of California.

This Agreement is the entire agreement held between us and supersedes any other communications or advertising with respect to the Software, Coded Font Programs and accompanying documentation.

If any provision of this Agreement is held invalid, the remainder of this Agreement shall continue in full force and effect.

If you have any questions concerning this Agreement, please write to Electronics for Imaging, Inc., Attn: Licensing Dept. or see Electronics for Imaging's web site at www.efi.com.

Electronics for Imaging, Inc.
2855 Campus Drive
San Mateo, CA 94403

Contents

Introduction

About the documentation	ix
Specifications	x
User software	xi
System requirements	xii
Windows	xii
Mac OS	xiv
UNIX (TCP/IP)	xiv
Parallel port	xv
IPX (Novell)	xv
Command WorkStation	xv

Installing User Software on a Windows Computer

Installing Windows software	1
Downloading printer files with the Installer WebTool	2
Setting up the Fiery XJ as a PostScript printer	2
Setting up PostScript printing with Windows 95	2
Setting up PostScript printing with Windows 3.1x	18
Setting up PostScript printing with Windows NT 4.0	22
Installing Fiery XJ software	35
Fiery Downloader	35
Command WorkStation	37
Using the software for the first time	39
Configuring the connection to the Fiery XJ	39
Copying color files from the User Software CD	42
Installing the Fiery XJ ICM printer profile for Windows 95	44
Installing files for Adobe Photoshop	44

Installing User Software on a Mac OS Computer

Installing Mac OS software	49
Downloading printer files with the Installer WebTool	50
Setting up PostScript printing with Mac OS	50
Setting up the Fiery XJ in the Chooser	52
Installing Fiery XJ software and fonts	53
Screen fonts	55
Copying color files from the User Software CD	56
Installing files for Adobe Photoshop	57

Downloading Installers with Fiery WebTools

Setting up Fiery WebTools	63
Using the Installer WebTool	64

Troubleshooting

On a Windows computer	67
Setting up IPX (Novell) printing for Windows NT Workstation	67
Installing the Adobe PostScript Printer Driver	67
Problems with the Fiery utilities on Windows 95 or Windows NT	67
On a Mac OS computer	68
Setting up the Fiery XJ in the Chooser	68
Installing screen fonts	68

Index

Introduction

This manual describes how to install the user software for the Fiery XJ+ 525 Color Server™ and set up printing from Windows and Mac OS computers. For information about setting up network servers and clients to use the Fiery XJ™, see the *Configuration Guide*. For general information on using the color copier, your computer, your application software, or your network, see the manuals that accompany those products.

NOTE: The term “Fiery XJ” is used to refer to the Fiery XJ+ 525 Color Server.

The Fiery XJ includes Command WorkStation™ software, which enables an operator to manage all jobs sent to the Fiery XJ. Although it may not be the case at all sites, the documentation for this product assumes the presence of an operator who controls and manages jobs sent by users from remote workstations.

The Fiery XJ supports the DocuColor 40 digital copier.

Your Fiery XJ includes a media pack containing the following:

- User Software CD
- System Software CD
- User Documentation CD
- Printed Release Notes (described below)
- Quick Start Notes

About the documentation

This manual is part of the set of Fiery XJ documentation, which includes the following manuals for users and system administrators:

- The *Printing Guide* describes the printing features of the Fiery XJ for users who send jobs via remote workstations on the network or via a direct parallel port connection.
- The *Color Guide* provides an introduction to the basics of color theory and printing to a Fiery XJ. It also includes practical color printing tips and application notes that explain how to print to the Fiery XJ from popular Windows and Mac OS applications.

- The *Job Management Guide* explains the functions of the Fiery client utilities, including the Command WorkStation, and how they can be used to manage jobs and maintain color quality. This book is intended for an operator or administrator, or a user with the necessary access privileges, who needs to monitor and manage job flow, perform color calibration, and troubleshoot problems that may arise.
- The *Configuration Guide* explains basic configuration and administration of the Fiery XJ for the supported platforms and network environments. It also includes guidelines for setting up UNIX, Windows NT, and NetWare servers to provide PostScript printing services to clients.
- *Getting Started* describes how to install software to enable users to print to the Fiery XJ. Specifically, it describes installation of PostScript printer drivers, printer description files, and other software provided on the User Software CD. It also explains how to connect each user to the network.
- *Release Notes* provide last-minute product information and workarounds for some of the problems you may encounter.

Specifications

The Fiery XJ has the following features:

- MIPS R5000, 200 MHz CPU
- 256MB RAM (256MB, 384MB, and 512MB configurations are available)
- Internal 4.55GB hard disk drive
- External CD-ROM drive (available as an optional kit)
- SCSI port
- Supports AppleTalk, TCP/IP, and IPX protocols simultaneously
- Supports parallel port communication
- Supports EtherTalk Phase II
- Supports thinnet (thin coaxial Ethernet cable or 10Base2), thicknet (thick coaxial Ethernet cable or 10Base5), and unshielded twisted pair (Fast Ethernet 100BaseTX or Ethernet 10BaseT)
- Supports Token Ring networking (available as an optional kit)

- Supports Adobe PostScript 3
- Includes 136 fonts (117 Adobe Type 1 PostScript, and 19 TrueType)

In addition, two Adobe Multiple Master fonts are included and are used for font substitution in PDF files.

- Built-in ColorWise™ color management and NetWise™ networking features
- Fiery WebTools™
- Fiery Downloader™ client utility

User software

The full set of Fiery XJ user software is provided on the User Software CD. Installers for the printer files can also be downloaded with the Installer WebTool.

Adobe PostScript Printer Driver	Enables you to print to the Fiery XJ from Windows 3.1x, Windows 95, Windows NT 4.0, and Mac OS computers; supports special Fiery XJ and PostScript 3 features.
PostScript Printer Description files (PPDs)	Files for use with the PostScript printer driver; they allow the Fiery XJ to appear in popular applications' Print and Page Setup dialog boxes. The Fiery XJ PPDs provide information about the Fiery XJ and your particular copier model to the application and printer driver you are using.
Screen Fonts (for MacOS only)	Screen fonts for the 136 printer fonts installed on the Fiery XJ (117 Adobe Type 1 and 19 TrueType). See Appendix B of the <i>Printing Guide</i> for a complete list.
Fiery Downloader	Enables you to print PostScript files, Encapsulated PostScript (EPS) files, and Portable Document Format (PDF) files directly to the Fiery XJ without opening the application in which they were created. Fiery Downloader also enables you to manage the printer fonts installed on the Fiery XJ.

Command WorkStation software	Enables you to track and manage print jobs, manage printer fonts, preview print jobs, merge documents, perform calibration, and configure the server from a remote workstation. For more information on the Command WorkStation, see the <i>Job Management Guide</i> .
Color management files	ColorSync and ICM color management files that enable you to maintain consistent color from your original artwork to the colors displayed on your monitor to the printed output.
Color reference files	Reference pages that you can print to view the range of colors available on your Fiery XJ. For the most predictable color results, refer to these pages when defining colors in applications.

System requirements

To install the Fiery XJ user software on a Windows or Mac OS computer, the computer must be equipped with a built-in or external CD-ROM drive.

Windows

To print to the Fiery XJ, you need:

- A Windows-based computer with an 80486, AMD, or Pentium processor
- Windows 95, Windows 3.1x, or Windows NT 4.0
- At least 4MB of RAM

To use Fiery Downloader you need:

- *Either* Windows 95 *or* Windows NT 4.0 with NT Service Pack 3
- At least 16MB of RAM

To use Fiery WebTools, you also need:

- *Either* Netscape Communicator v4.0.x with Java enabled *or* Microsoft Internet Explorer v3.0.2 or 4.0.x with Java enabled

NOTE: Netscape and Microsoft continue to release frequent updates to their browsers. As support cannot be guaranteed for all versions, use the versions specified above for best results.

- A monitor that supports 16-bit color at a minimum resolution of 800 x 600
- A TCP/IP enabled network and the IP address or DNS name of the Fiery XJ
- Web Services enabled on the Fiery XJ

NOTE: Fiery utilities and Fiery WebTools are not supported with Windows 3.1x.

With Microsoft Windows 95, you also need:

- IPX/SPX or TCP/IP networking protocol installed
- Adobe PostScript Printer Driver for Windows version 4.2 or later (version 4.2.4 is included with the user software)

With Microsoft Windows 3.1x, you also need:

- IPX networking protocol installed
- IPX/SPX networking software for IPX/SPX communication
- MS-DOS version 5.0 or later
- Adobe PostScript Printer Driver for Windows version 3.0 or later (version 3.1.2 is included with the user software)

With Microsoft Windows NT 4.0 you also need:

- IPX/SPX or TCP/IP networking protocol installed
- Adobe PostScript Printer Driver for Windows NT 4.0 (version 5.0 is included with the user software)

Mac OS

To print to the Fiery XJ, you need:

- A Mac OS-based computer
- At least 8MB of RAM
- EtherTalk installed
- Apple System software version 7.0 or later
- Adobe PostScript Printer Driver version 8.5 or later (version 8.5.1 is included with the user software)

To use Fiery Downloader you also need:

- A Power Macintosh computer
- At least 16MB of RAM

To use Fiery WebTools, you also need:

- Netscape Communicator v4.0.x with Java enabled

NOTE: Netscape continues to release frequent updates to its browser. As support cannot be guaranteed for all versions, use the version specified above for best results.

- A TCP/IP enabled network and the IP address or DNS name of the Fiery XJ
- Web Services enabled on the Fiery XJ

UNIX (TCP/IP)

To print to the Fiery XJ with a UNIX workstation, you need:

- A workstation with standard TCP/IP connectivity (for example, Sun SPARCstation or Silicon Graphics workstation with Solaris version 2.x or SunOS version 4.1.x software)
- TCP/IP printing software that conforms to RFC1179 (Berkeley lpd protocol)

Parallel port

To print to the Fiery XJ using the parallel port, you need:

- A Windows-based computer with an 80486, AMD, or Pentium processor
- At least 4MB of RAM
- The parallel cable included with the Fiery XJ

The cable has a DB-25 male connector (that connects to the computer) on one end and a DB-25 female connector (that connects to the Fiery XJ) on the other.

IPX (Novell)

To use the Fiery XJ with an IPX (Novell) network, you need:

- A Novell server
- Novell NetWare software version 4.x or 3.x
- Support for Ethernet SNAP, Ethernet II, Ethernet 802.3, Ethernet 802.2, Token Ring SNAP, or Token Ring

Command WorkStation

To run the Command WorkStation application from a remote workstation, you need:

- A Windows-based computer with a 200 MHz Pentium processor
- Windows 95
- IPX/SPX or TCP/IP networking protocol installed
- PCI VGA interface card
- At least 32MB of RAM
- At least 2MB of video RAM
- An 850MB IDE or SCSI hard disk drive
- A 2x CD-ROM drive
- A 17" monitor that supports 16-bit color at a minimum resolution of 1024 x 768

Installing User Software on a Windows Computer

This chapter describes installing software and setting up printing from a Windows-based computer running Windows 95, Windows 3.1x, or Windows NT 4.0.

The general steps for installing the Fiery XJ software are:

- Install the Adobe PostScript printer driver and PostScript Printer Description files (PPDs).
- Set up the printer driver to communicate with the Fiery XJ.
- Install Fiery Downloader (Windows 95 and Windows NT 4.0 only).
- Install the Command WorkStation software on the designated Windows 95 workstation(s).
- Configure the connection for Fiery Downloader and the Command WorkStation.
- Copy additional color reference and application files from the User Software CD as needed.

Installing Windows software

The Instalrs folder on the User Software CD contains the following installer folders:

- CWS—Command WorkStation software installer
- Download—Fiery Downloader installer
- Ps_drvr—Adobe PostScript printer driver installers and Fiery XJ PPD files for all supported Windows systems

In addition, the User Software CD includes various color files. These files can be copied or installed from the CD and placed in the appropriate locations on your hard disk (see “Copying color files from the User Software CD” on page 42):

- ICM printer profile
- Separation Tables and a monitor settings file for use with Adobe Photoshop
- PostScript CMYK reference file

- PostScript PANTONE Coated Color Reference file
- RGB color reference files for specifying colors from Microsoft Word and PowerPoint

NOTE: If you operate the Fiery XJ in a copy shop, quick print shop, or service bureau, you might want to provide copies of the printer driver, PPD file, separation tables, and relevant documentation to customers. This ensures that jobs they prepare are properly formatted for printing to the Fiery XJ.

Downloading printer files with the Installer WebTool

Installers for the Fiery XJ printer files can be downloaded from the Fiery XJ with the Installer WebTool (if the site administrator has enabled Internet access to the Fiery XJ). For instructions, see “Using the Installer WebTool” on page 64.

Once you download the installers, the installation process is identical to installing from the User Software CD.

Setting up the Fiery XJ as a PostScript printer

To set up the Fiery XJ as a PostScript printer, you need a PostScript printer driver and the appropriate Fiery XJ PPD file. The Adobe PostScript printer drivers are capable of providing access to all Fiery XJ features and all support PostScript 3.

The following procedures are specific to each version of Windows.

Setting up PostScript printing with Windows 95

You can use the following procedure whether you are installing from the User Software CD or with installer files downloaded using the Installer WebTool.

NOTE: If you have problems setting up the Fiery XJ, install another PostScript printer such as the Apple LaserWriter, and then install the Fiery XJ.

TO INSTALL THE ADOBE POSTSCRIPT PRINTER DRIVER FOR WINDOWS 95:

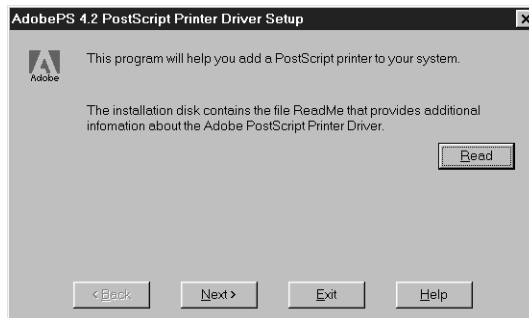
1. If you are installing from the CD, insert it into the CD-ROM drive and double-click the icon of the CD, and open the English\Instalrs\P_s_drvr folders.

If you are installing from the files you downloaded using the Installer WebTool, double-click the icon of your hard disk drive, and open the Prntdrv\Ps_drvr folder.

2. Open the Win_9x folder, and double-click the Setup.exe icon.
3. Read the End User License Agreement. If you agree with the terms and conditions of the agreement, click Accept.

You must click Accept before setup can continue. If you click Decline, you are prompted to either continue with setup or exit.

4. Click Read to view the README file. When you are finished, close the README file and click Next.



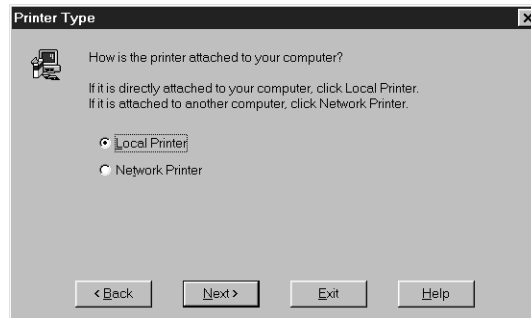
The information in this file is not specific to your Fiery XJ. You can click Next to postpone reading this file and read it later.

5. If you are installing from the CD, you may see an Install Setup Program dialog box offering you the option to copy the setup program to your hard disk. Make your choice and then click Next.

4 Installing User Software on a Windows Computer

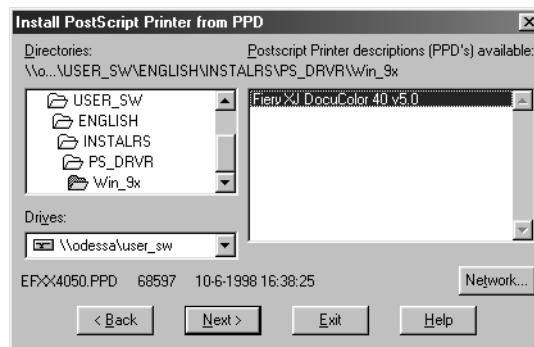
6. In the Printer Type dialog box, select Local Printer and click Next.

This is a general installation. You can modify the attachment later, according to your network type.



7. If you are installing from the CD, in the Directories box, open the English\Instalrs\P_s_drvr\Win_9x folders.

If you are installing from the installer files you downloaded with the Installer WebTool, in the Directories box, open the Prntdrvr\P_s_drvr\Win_9x folders.

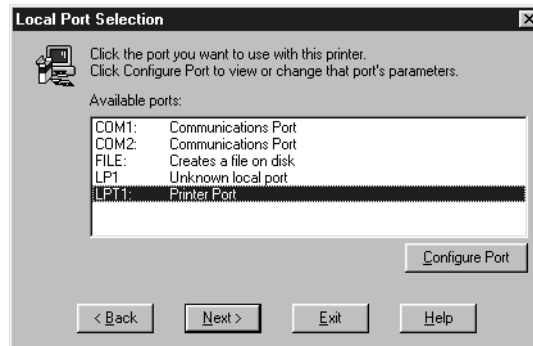


8. The Fiery XJ PPD appears in the Postscript Printer descriptions (PPDs) available box. Select the Fiery XJ PPD file and click Next.

Select "Fiery XJ DocuColor 40 v5.0."

5 Setting up the Fiery XJ as a PostScript printer

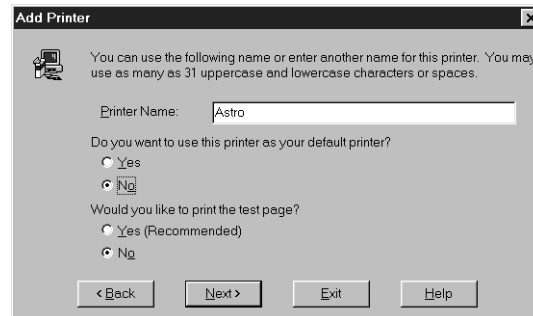
9. In the Available ports box, select the LPT1 port and click Next.
You will configure the port later, according to your network type.



10. Using a maximum of 20 characters, enter a name for the Fiery XJ (or leave the default name) in the Printer Name box.

This name will be used in the Printers and queue windows.

NOTE: Entering more than 20 characters may cause printing problems with some network applications.



11. If you want the Fiery XJ to be the default printer select Yes; if not, select No.

12. Select **No** to printing the test page and click **Next**.

You will print the test page after you finish configuring the printer.

The necessary files are installed to your hard disk. When installation is complete, the Properties dialog box appears.

13. Click **OK**.

You are notified that Setup is complete.

14. Click **Exit**.

You are ready for the instructions for connecting to your network type (see “Completing the Windows 95 connection” below).

Completing the Windows 95 connection

To print from Windows 95 you need to:

- Set up network servers, if any
- Set up the Fiery XJ to accept print jobs from your computer
- Configure a port on each Windows 95 computer for the network or connection type

For this type of connection:	See:
Parallel	below
IPX/SPX	page 11
IPX (Novell)	page 13
SMB printing	page 14

Completing the Windows 95 parallel port connection

Preparing a parallel port connection for Windows 95 requires specific BIOS settings on your computer, and specific port and printer settings for Windows 95. In addition, a change to one of the Fiery XJ Setup settings may be required if you choose to spool files to the Fiery XJ rather than print directly.

TO PREPARE THE FIERY XJ AND YOUR COMPUTER FOR PARALLEL
PORT PRINTING:

1. Connect the Fiery XJ to the parallel port on your computer.
For instructions, see the *Configuration Guide*.
2. In Network Setup>Port Setup>Parallel Port Setup, set Enable Parallel Port to Yes.
For more information about Fiery XJ Setup, see the *Configuration Guide*.
3. If you want to spool files to the Fiery XJ, set Port Timeout in Seconds to 10.
If you want to print directly to the Fiery XJ, set Port Timeout in Seconds to 5.
Setting this option to 10 seconds ensures that spooling is not interrupted due to timeout.
4. In your computer's BIOS settings, set Parallel Port Mode to Compatible.
To access the BIOS settings, restart the computer and press the key indicated on your monitor as soon as the computer starts up. You may have to scroll through several screens to reach the parallel port settings. After setting the Parallel Port Mode to Compatible, save your changed setting and exit.

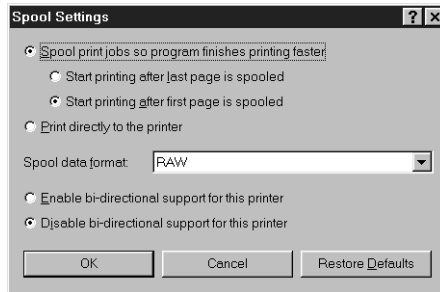
TO PREPARE THE PRINTER FOR PARALLEL PORT PRINTING:

1. Click the Start button, point to Settings, and click Printers.
2. Click the Fiery XJ printer icon and choose Properties from the File menu.
3. Click the Details tab, and in the "Print to the following port" menu, select LPT1: (Printer Port).

NOTE: Check this selection carefully. It may read LPT1: (ECP Printer Port), which is *not* equivalent to LPT1: (Printer Port).

If this box does *not* read LPT1: (Printer Port), change the port setting now, as described in "To prepare the port for parallel port printing:" on page 9, and then return to this procedure. You may need your Windows 95 system CD.

4. If you changed the selection in the “Print to the following port” menu, click Apply. A Warning dialog box may appear, stating that fonts you downloaded to the previously selected port may be lost; click OK.
5. Click Spool Settings.



6. Select either “Spool print jobs so program finishes printing faster” or “Print directly to the printer.”

The selection you make depends on the action you took in step 3 on page 7:

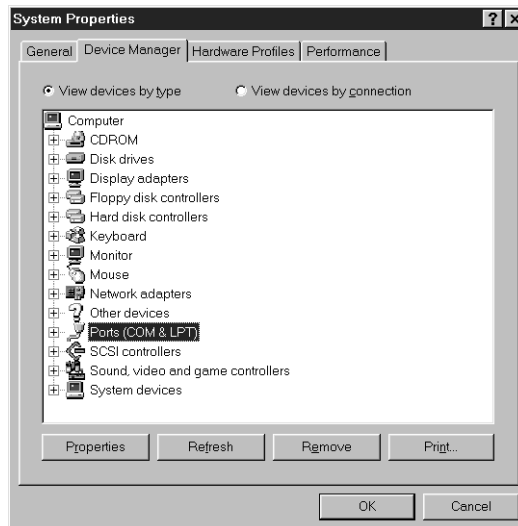
- If you set the Port Timeout in Seconds to 10, you can select either option; however, spooling is faster.
- If you set the Port Timeout in Seconds to 5, select “Print directly to the printer.”

7. Select “Disable bi-directional support for this printer” and click OK.
8. Click Apply.
You are now ready to print from your applications to the Fiery XJ with the parallel port. To confirm the connection, print a Windows 95 test page.
9. Click the General tab.
10. Click Print Test Page and click OK.

Perform the following procedure only if the LPT1 port is *not* currently set to Printer Port.

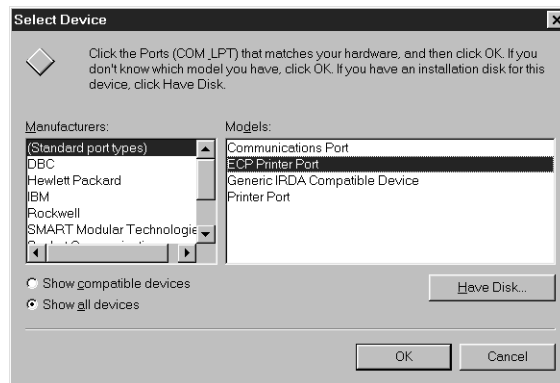
TO PREPARE THE PORT FOR PARALLEL PORT PRINTING:

1. Click the Start button, point to Settings, and click Control Panel.
2. Double-click System.
The System Properties window appears.
3. Click the Device Manager tab.
4. Double-click Ports.



5. Double-click the port with (LPT1) in its name.
6. In the (LPT1) Properties dialog box click the Driver tab and then click Change Driver.

7. Select **Show all devices**.
8. From the **Manufacturers** list, select **“(Standard port types)”**. From the **Models** list, select **“Printer Port”** (*not* ECP Printer Port). Click **OK**.



9. Click **OK** in the (LPT1) Properties dialog box.

NOTE: You might need to insert the Windows 95 system CD to complete this step depending on whether the required files are on your hard disk.

10. When prompted to restart the computer, click **Yes**.

After Windows 95 restarts, you can complete the procedure described in “To prepare the printer for parallel port printing:” on page 7.

Completing the Windows 95 IPX/SPX or IPX (Novell) connection

If you are printing through a Novell server, the Novell network and file server should be set up before you begin. The file server should be configured with a print server and print connection for the Fiery XJ. For details see your NetWare documentation and the *Configuration Guide*.

You can also use Fiery Downloader to print directly to the Fiery XJ from Windows 95 with IPX/SPX.

TO SET UP IPX/SPX PRINTING:

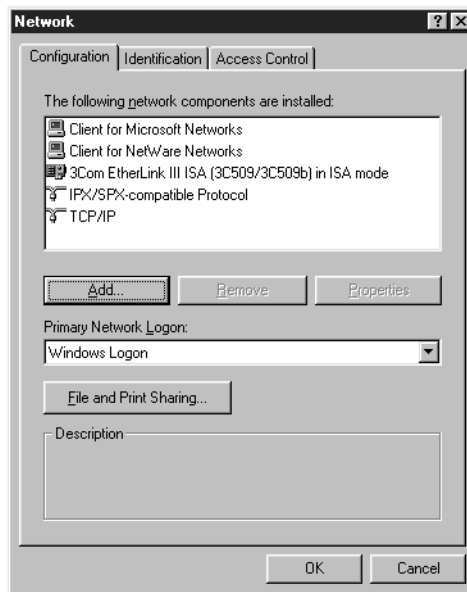
1. Open the Windows 95 Control Panel.
2. Double-click the Network icon.

Make sure that IPX/SPX-compatible Protocol and TCP/IP protocol are both listed in the Installed Network Components section.

If they are not, see your Windows 95 documentation for instructions.

NOTE: You must enable TCP/IP printing to ensure that all files required for IPX/SPX will be installed. You can select it and click Remove after you set up IPX/SPX if you do not need to use the TCP/IP protocol.

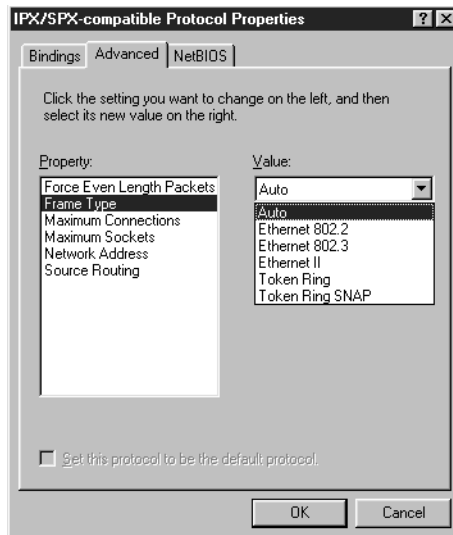
3. Double-click the IPX/SPX-compatible Protocol icon.



4. Click the Advanced tab.

5. In the Property list, click Frame Type. In the Value pop-up menu, select the Frame Type that corresponds to the one set during Fiery XJ Network Setup and click OK.
If necessary, print the Configuration page from the Control Panel to check which Frame Type(s) are configured.

NOTE: Do not select Auto. Doing so may not select the Frame Type specified on the Fiery XJ.



6. In the Network Control Panel, click OK.
The System Setting Change dialog box appears, prompting you to restart your computer.
7. Click Yes to restart and save the settings.

TO SET UP IPX (NOVELL) PRINTING WITH WINDOWS 95:

1. Click the Start button, choose Settings, and then choose Printers.
2. Click the Fiery XJ icon, and choose Properties from the File menu (or right-click the icon and left-click Properties).
3. Click the Details tab and click Add Port.
A list of connection options is displayed.
4. In the Add Port dialog box, specify the network path, or click Browse for a display of your network environment.
5. If you are using a NetWare file server, double-click the icon of the NetWare file server you want to use for printing to the Fiery XJ.
6. Click the printer icon labeled with the NetWare print queue you will use and click OK.
7. In the Add Port dialog box, verify that the network path is updated and click OK.
You are ready to print from the workstation.
Your print jobs will be sent to the specified print queue on the Novell file server. The Fiery XJ polls the file server and if jobs are present, they are sent to the Fiery XJ.
To confirm the connection, you can print a Windows 95 test page.
8. Click the General tab, click Apply, and then click Print Test Page.
9. The Job Notes window appears. Enter user and job identification information for accounting purposes, or whatever information is required at your site, and click OK.

Completing the SMB printing connection

If you don't have a Novell network, you can print via SMB printing (also known as Windows printing or WINS printing). Printing by this method allows you to print from your computer to a particular print connection (Hold, Print, or Direct) on the Fiery XJ.

To set up printing to a second or third print connection, you must install a new printer for each connection and repeat the procedure "To set up SMB printing:" on page 16. If you install more than one printer, give each a descriptive name during printer driver installation, such as Astro-Print or Astro-Hold, so you can easily identify printers.

BEFORE YOU BEGIN:

1. Configure the Fiery XJ for SMB printing in Network Setup>Service Setup>Windows Setup.

SMB printing is referred to as Windows Printing in Setup, on the Control Panel Map, and on the Configuration page. For more information, see the *Configuration Guide*.

2. Print the Fiery XJ Configuration page.

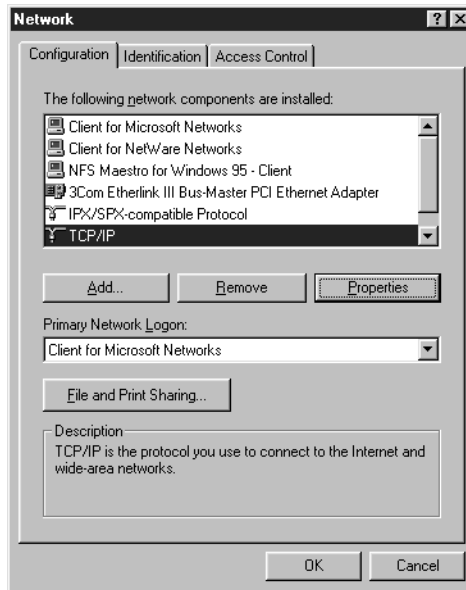
You need information from the Configuration page to specify settings on your computer, such as the Server Name and IP address of the WINS Name Server.

3. Save any documents in open programs.

You are prompted to restart Windows after this procedure, so be sure to save any documents.

TO PREPARE YOUR COMPUTER FOR SMB PRINTING:

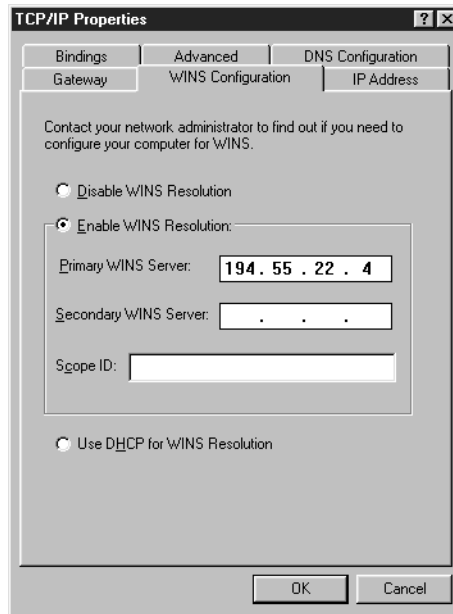
1. Click Start, choose Settings, and click Control Panel.
2. Double-click the Network icon.
3. Select TCP/IP and click Properties.



4. Click the WINS Configuration tab.

5. Select “Enable WINS Resolution” and enter the TCP/IP address of the WINS Name Server.

The TCP/IP address of the WINS Name Server is listed on the Configuration Page in the Network Setup section.



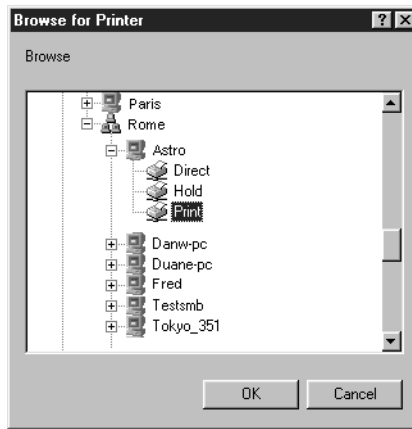
6. Click OK, and click OK in the Network dialog box.

You are prompted to restart Windows. Click Yes, and when Windows restarts, continue with the following procedure.

TO SET UP SMB PRINTING:

1. Click the Start button, choose Settings, and click Printers.
2. Click the icon for the printer and choose Properties from the File menu.
3. Click the Details tab in the Properties window and click Add Port.
A list of connection options is displayed.

4. In the Add Port dialog box, click Browse to display your network environment.
5. Expand the levels to locate your printer and the print connection (Print, Hold, or Direct) to which you want to print.



The printer name you are browsing for is the Server Name listed under Network Setup on the Configuration Page. This name may not be the same as the Server Name listed under Server Setup on the Configuration Page (which is the name displayed on the Control Panel).

The network environment and the amount of network traffic determines the amount of time required for the Browse function.

6. Click the printer icon labeled with the print queue you will use and click OK.
 7. In the Add Port dialog box, verify that the network path is correct and click OK.
 8. To confirm the connection, click the General tab in the Properties dialog box.
 9. Click Apply, then click Print Test Page.
 10. The Job Notes window appears. Enter user and job identification information for accounting purposes, or whatever information is required at your site, and click OK.
- If the test page prints successfully, you are ready to print from the computer.

Setting up PostScript printing with Windows 3.1x

You can use the following procedure whether you are installing from the User Software CD or with installer files downloaded using the Installer WebTool.

TO INSTALL THE ADOBE POSTSCRIPT PRINTER DRIVER FOR WINDOWS 3.1X:

1. In the Main window, double-click the Control Panel icon.
If there is an Adobe PostScript Printers icon in the Control Panel window, proceed to “To install the Fiery XJ PPD file for Windows 3.1x:” on page 19. Otherwise, install the Adobe PostScript printer driver from the User Software CD as described below.
2. Exit all applications and close all windows.
3. Insert the User Software CD into the CD-ROM drive.
4. In the Windows Program Manager, choose Run from the File menu, and then click Browse.
5. If you are installing from the CD, select the CD-ROM drive from the Drives: box. In the Directories box, double-click to open the English\Instalrs\Ps_drvr\Win_31 folders.

If you are installing from the installer files you downloaded with the Installer WebTool, select the drive you installed the files to from the Drives: box. In the Directories box, double-click to open the Prntdrv\Ps_drvr\Win_31 folders.
6. Select the Setup.exe file, and click OK.
7. Click OK in the Run dialog box.
8. Click Accept in the PostScript Printer Driver Setup dialog box.
9. Click Read to view the README file. When you are finished, close the README file and click Continue.

The necessary files are installed to your hard disk. When installation is complete, the PostScript Printer Driver Setup dialog box appears.
10. Click Restart Windows.

TO INSTALL THE FIERY XJ PPD FILE FOR WINDOWS 3.1X:

1. In the Control Panel window, double-click the Adobe PostScript Printers icon.
The Install PostScript Printer from PPD dialog box appears.
2. If you are installing from the CD, in the Drives box, select the drive containing the CD, and in the Directories box, double-click to open the English\Instalrs\Ps_drvr\Win_31 folders.

If you are installing from the installer files you downloaded with the Installer WebTool, in the Drives box, select your hard disk drive, and in the Directories box, double-click to open the Prntdrv\Ps_drvr\Win_31 folders.
3. Select the Fiery XJ PPD from the Printer Descriptions available box and click Install.
4. Click OK when you are notified that the printer was successfully installed.
5. Click Close.

Setting the Fiery XJ as the default printer with Windows 3.1x

You can specify the Fiery XJ as the default printer. Many Windows applications use the default printer when you choose the Print command.

TO SET THE FIERY XJ AS THE DEFAULT PRINTER:

1. In the Control Panel window, double-click the Printers icon.
The Printers window appears.
2. Select the Fiery XJ from the Installed Printers box.
3. Click Set As Default Printer.
The Fiery XJ appears in the Default Printer area of the Printers window.

Completing the Windows 3.1x connection

To print from Windows 3.1x you need to:

- Configure a port on each Windows 3.1x computer for the network or connection type
- Complete setup for the network type you are printing over
- Set up the Fiery XJ to accept print jobs from your computer

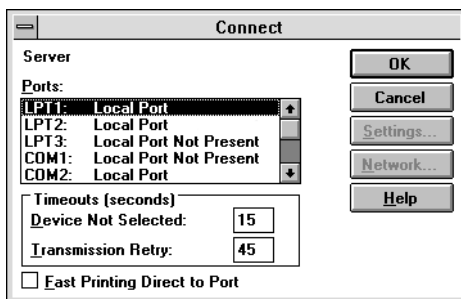
Selecting a printer port with Windows 3.1x

When you install a printer, Windows assigns it to a default printer port. If the Fiery XJ is connected to your computer through a network or you want to assign it to a different port, you need to change the port assignment. Check with your system administrator about which port to use.

You can also use this procedure to enable printing with the parallel port.

TO SELECT A PRINTER PORT:

1. In the Control Panel window, double-click the Printers icon.
2. In the Printers window, select the Fiery XJ in the Installed Printers list box.
3. Click Connect.



4. Connect the Fiery XJ to the same port as your network.

For parallel printing, select the port (LPT1, LPT2, or LPT3) connected to your parallel cable.

To print to a file, select FILE. Printing to a file is useful if the Fiery XJ is elsewhere or off-site. However, if you select the FILE port, you cannot print to a printer until you select a network or printer port. (In some applications, you can select the FILE port from the Print dialog box; this is preferable for temporary use since it doesn't require resetting the port in the Control Panel.)

5. Click OK.

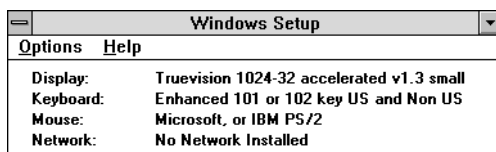
The Printers window appears again, with the selected port next to the selected printer name in the Installed Printers list box.

6. When you are finished, click Close.

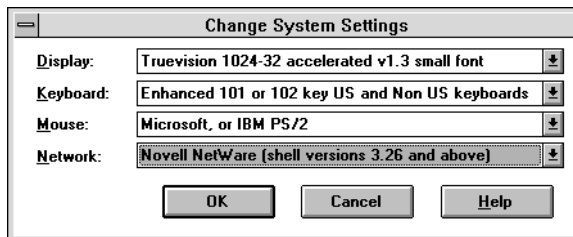
Setting up IPX (Novell) printing with Windows 3.1x

TO SET UP IPX (NOVELL) PRINTING:

1. In the Main group of the Windows Program Manager, double-click the Windows Setup icon.
2. From the Options menu, choose Change System Settings.



3. From the Network pop-up menu, choose Novell NetWare (shell versions 3.26 and above).



4. Click OK. When prompted, restart Windows.
5. In the Main group, double-click Control Panel, then double-click Printers.
6. In the Printers window, select the Fiery XJ and click Connect.
7. Click Network, or, if you are printing to a file, select File.
Printing to a file is useful if the printer is elsewhere or off-site. However, if you select the FILE port, you cannot print to a printer until you select a network or printer port. If you select Network, the next window depends on the NetWare client driver version.
8. If the Network Printer Connections dialog box is displayed, select the port in the Printer connections box.
9. In the Available queues list box, select the server and queue name that correspond to the Fiery XJ.
10. Click the Capture button, then click the Close button.
The Connect dialog box is displayed with the network path to the Fiery XJ.
11. Click OK in the Connect dialog box.
The Printers window appears again, with the selected port next to the selected printer name in the Installed Printers list box.
12. Click Close in the Printers dialog box.

You are now ready to print to the Fiery XJ from Windows applications. When you select Print, jobs are routed to the print queue on the NetWare file server, and then sent to the Fiery XJ. The network administrator should verify the network connection by printing a test document from each networked computer that will use the Fiery XJ.

Setting up PostScript printing with Windows NT 4.0

You can use the following procedure whether you are installing from the User Software CD or with installer files downloaded using the Installer WebTool.

TO INSTALL THE ADOBE POSTSCRIPT PRINTER DRIVER FOR WINDOWS NT 4.0:

1. If you are installing from the CD, insert it into the CD-ROM drive and double-click the icon of the CD.

If you are installing from the files you downloaded using the Installer WebTool, double-click the icon of your hard disk drive.

2. If you are installing from the CD, open the English\Instalrs\Ps_drvr folders.

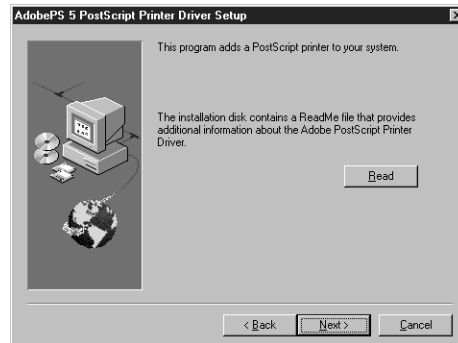
If you are installing from the files you downloaded using the Installer WebTool, open the Prntdrv\Ps_drvr folders on your hard disk.

3. Open the WIN_NT4x folder, and double-click the Setup.exe icon.

4. Read the End User License Agreement. If you agree with the terms and conditions of the agreement, click Yes.

You must click Yes before setup can continue. If you click Decline, you are prompted to either continue with setup or exit.

5. Click Read to view the README file. When you are finished, close the README file and click Next.



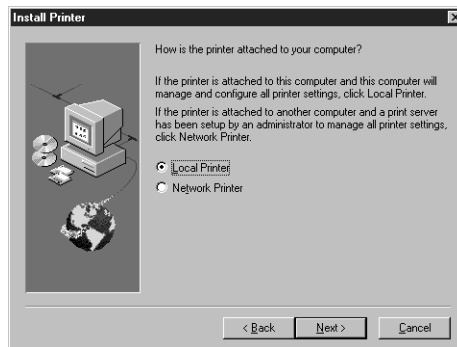
The information in this file is not specific to your Fiery XJ. You can click Next to postpone reading this file and read it later.

6. If you are installing from the CD, you may see an Install Setup Program dialog box offering you the option to copy the setup program to your hard disk. Make your choice and then click Next.

Some printer files are installed to your hard disk.

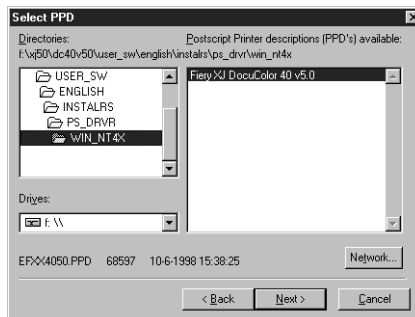
7. In the Printer Type dialog box, select Local Printer and click Next.

This is a general installation. You can modify the attachment later, according to your network type.

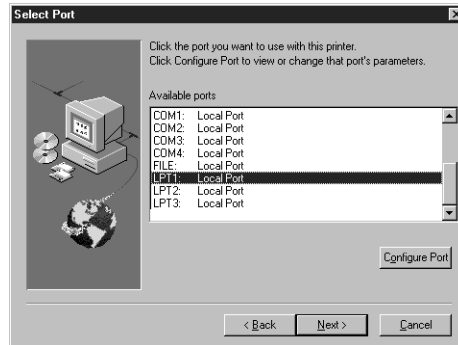


8. If you are installing from the CD, in the Directories box, open the English\Instalrs\Ps_drvr\WIN_NT4x folders.

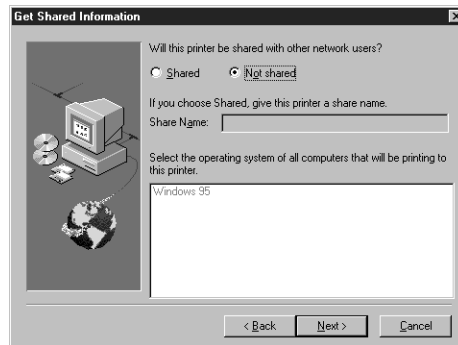
If you are installing from the installer files you downloaded with the Installer WebTool, in the Directories box, open the Prntdrvr\Ps_drvr\WIN_NT4x folders.



9. The Fiery XJ PPDs appear in the Postscript Printer descriptions (PPD's) available box. Select the appropriate Fiery XJ PPD file for your copier and click Next.
10. In the Available ports box, select the LPT1 port and click Next.
You will configure the port later, according to your network type.



11. Indicate whether you want the printer installed as a shared printer. Click Next.



12. Using a maximum of 20 characters, enter a name for the Fiery XJ (or leave the default name) in the Printer Name box.

NOTE: Entering more than 20 characters may cause printing problems with some network applications.



13. If you want the Fiery XJ to be the default printer select Yes; if not, select No.
14. Select No to printing the test page and click Next.
You will print the test page after you finish configuring the printer.
The necessary files are installed to your hard disk.
15. Click OK.
You are notified that Setup is complete.
16. Click Exit.
You are ready for the instructions for connecting to your network type (see below).

Completing the Windows NT 4.0 printer connection

To print from Windows NT 4.0 you need to:

- Set up network servers, if any
- Set up the Fiery XJ to accept print jobs from your computer
- Configure a port on each Windows NT computer for the network or connection type

To do this:	See:
Configure the parallel connection	“To set up parallel printing for Windows NT 4.0:” below
Configure the TCP/IP (lpr port) connection	“Completing the Windows NT 4.0 TCP/IP connection” on page 28
Configure the IPX (Novell) connection	“Completing the Windows NT 4.0 IPX (Novell) connection” on page 30

Completing the Windows NT 4.0 parallel port connection

The parallel port cable connects the Fiery XJ to a single computer.

Once you have installed the Adobe PostScript printer driver and the Fiery XJ PPD, complete the setup for parallel port printing.

TO SET UP PARALLEL PRINTING FOR WINDOWS NT 4.0:

1. Click the Start button, choose Settings, and then choose Printers.
2. Double-click the Fiery XJ icon and choose Properties from the Printer menu.
In the Ports tab, confirm that LPT1 (Local Port) is checked.
The Fiery XJ is ready to accept parallel print jobs from your computer, using the Windows NT PostScript printer driver and the Fiery XJ PPD.
3. Click the General tab and click Print Test Page.
4. Click the Sharing tab if you want to share the Fiery XJ with network users. Select Shared, and select a share name.
Select the operating system or systems used by your network clients if you want to install a printer driver that those clients can download.
5. Click OK to exit the Printer Properties dialog box.

Completing the Windows NT 4.0 TCP/IP connection

Once you have installed the Adobe PostScript printer driver and the Fiery XJ PPD, complete the setup for the TCP/IP and lpr connection as follows:

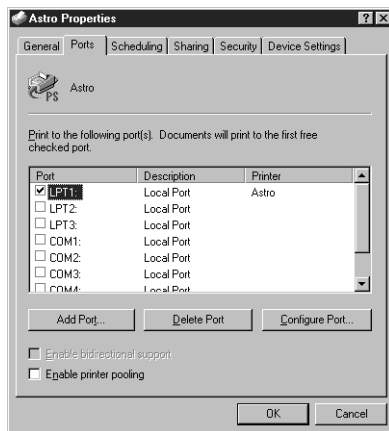
- Prepare the Fiery XJ to accept print jobs using TCP/IP and lpr protocols. (For details, see the *Configuration Guide*.)
- Configure the workstation for the TCP/IP connection.

Before you continue, ask the system administrator for the IP address assigned to the Fiery XJ, as well as the subnet mask and the gateway address, if they are used.

The TCP/IP Protocol and Microsoft TCP/IP Printing software should already be installed on the Windows NT workstation.

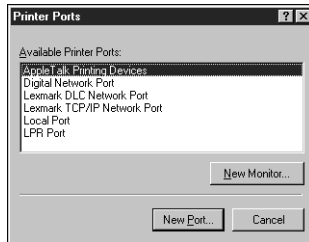
TO SET UP TCP/IP AND LPR PRINTING FOR WINDOWS NT 4.0:

1. Open the Properties dialog box for the Fiery XJ, and click the Ports tab.



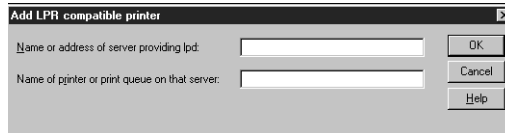
2. Click **Add Port**.

The available port types are displayed.

3. Select **LPR Port** and click **New Port**.

If the LPR port is not listed, install the TCP/IP protocols. See the *Configuration Guide* or your Windows NT documentation.

4. Enter the IP address of the Fiery XJ.



If your network uses Domain Name Services (DNS), enter the DNS name assigned to the Fiery XJ instead of the IP address.

5. Press **Tab** and type the internal name of the Fiery XJ.

This name can be simply the print queue name or it can be of the form `queue_devicename`.

```
print_DocuColor
hold_DocuColor
print
hold
```

NOTE: This name is case-sensitive; type it *exactly* as shown above.

6. Click OK.

The workstation checks the address or DNS name you entered and notifies you if it cannot resolve the address.

7. Click Close in the Printer Ports dialog box.

The new port configuration is reflected in the Ports tab. You should now print a test page to verify the connection.

8. Click the General tab and click Print Test Page.

When you print, your PostScript files are sent over the LPR Port connection to the Fiery XJ.

9. Click OK to close the Printer Properties dialog box.

Completing the Windows NT 4.0 IPX (Novell) connection

Complete the setup for the IPX (Novell) connection as follows:

- Configure the Novell network and file server for handling Fiery XJ print jobs.

The file server should be configured with a print server and print connection for the Fiery XJ. For details, see your NetWare documentation.

- Prepare the Fiery XJ for IPX printing.
- Set up the IPX connection on the workstation.

NetWare protocols (NWLink IPX/SPX Compatible Transport) and NetWare client services should already be installed on the Windows NT workstation.

To SET UP IPX (NOVELL) PRINTING FOR WINDOWS NT 4.0:

1. Double-click Network Neighborhood.
2. Double-click NetWare or Compatible Network.

A list of NetWare servers is displayed.

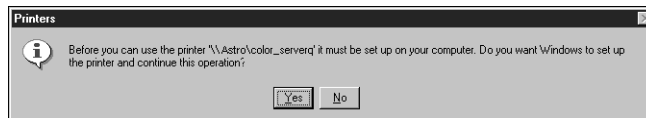


3. Double-click the NetWare Tree or File Server on which the network administrator defined a print connection for the Fiery XJ.

You may have to log in to the file server as a guest to see the print connections.

4. Double-click the print connection defined for the Fiery XJ.

If the NetWare server does not have a suitable driver for the Fiery XJ you may be asked if you want to set up the printer on your workstation.



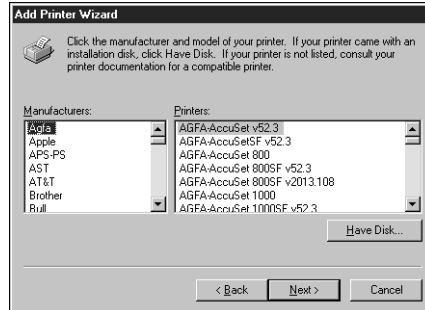
5. Click Yes.

The Add Printer Wizard appears.

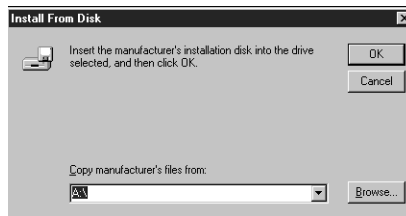
6. Specify if you print from MS-DOS programs and click Next.

If you select Yes, you will need to capture a printer port before continuing.

7. In the dialog box displaying lists of manufacturers and printers, click Have Disk.



The Install from Disk dialog box prompts you for the disk.



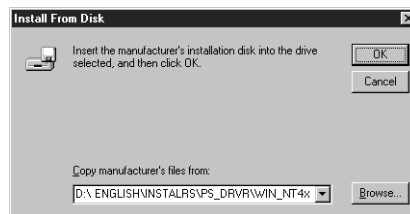
8. If you are installing from the CD, type the name of the CD-ROM drive (for example, D:\), and click Browse. Browse to the English\Instalrs\Ps_drvr\WIN_NT4x folder and click Open.

If you are installing from the installer files you downloaded with the Installer WebTool, type the name of your hard disk drive (for example, C:\), and click Browse. Browse to the Prntdrv\Ps_drvr\WIN_NT4x folder and click Open.

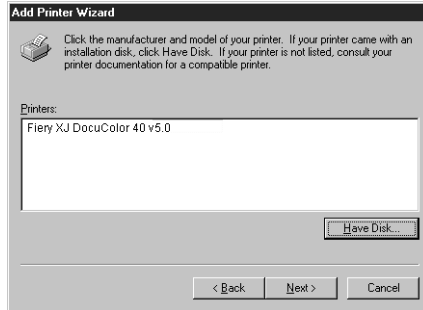
Make sure "Ntprint.inf" is selected in the Look in box.

The path is copied to the Install from Disk dialog box.

9. Verify the path is correct, and click OK.

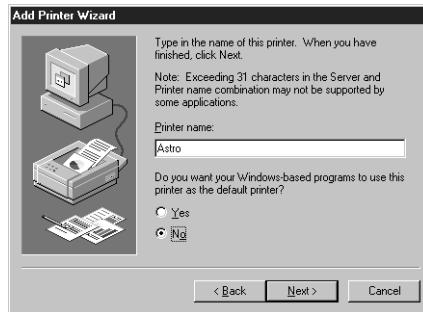


10. In the Printers box, select the Fiery XJ PPD file and click Next.

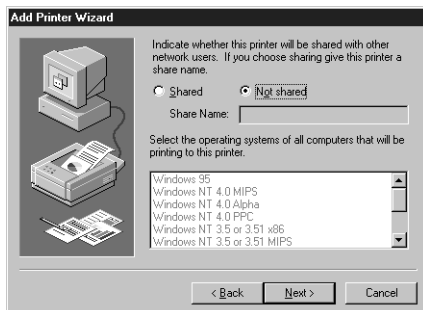


11. Using a maximum of 20 characters, enter a name for the Fiery XJ (or leave the default name) in the Printer name box, and choose whether you want the Fiery XJ to be your default printer. Click Next.

NOTE: Entering more than 20 characters may cause printing problems with some network applications.

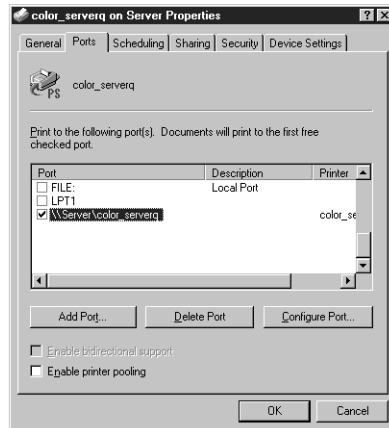


12. Indicate whether you want the printer installed as a shared printer. Click Next.



If you select Shared, you must also enter a Share Name for the printer (or leave the default name) and make selections from the list of operating systems used by client workstations.

13. Click **No** in the next dialog box to postpone printing a test page, and click **Finish**.
When installation is complete, a new printer window appears, with the name of the print queue on the NetWare server.
14. Choose **Properties** from the **Printer** menu and click the **Ports** tab.
The NetWare queue you just connected to is listed and checked as a port for the Fiery XJ.



15. Click the **General** tab and click **Print Test Page**.
The Fiery XJ polls the NetWare server for print jobs in the print connection defined for the Fiery XJ. When you print, your PostScript files are spooled to that connection and sent over the queue "port" to the Fiery XJ.
The test page job is listed in the queue window until it is printed.

Installing Fiery XJ software

The User Software CD includes software for the Fiery Downloader utility and the Command WorkStation application. These client utilities are supported with Windows 95 and Windows NT 4.0 only and must be separately installed on each client computer that will use them.

NOTE: Command WorkStation is supported only with Windows 95.

Fiery Downloader

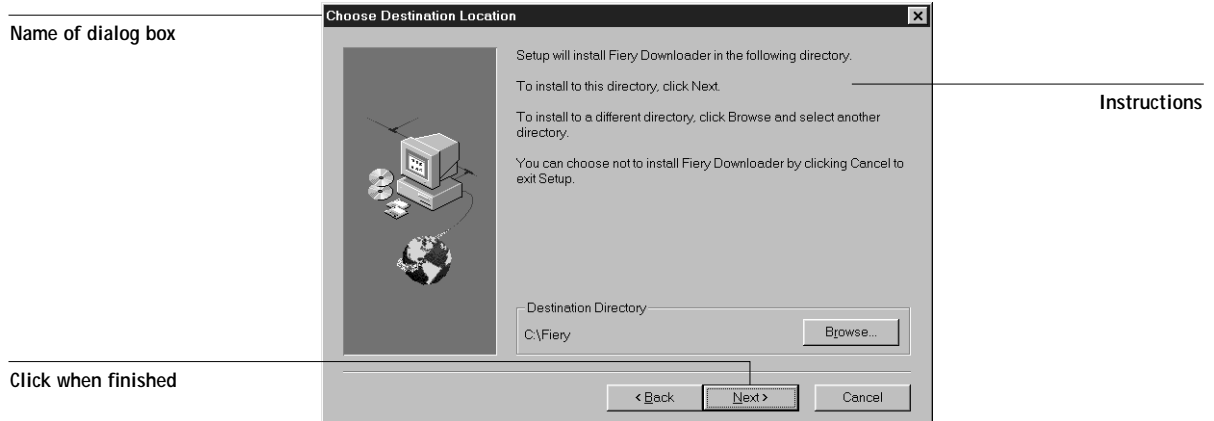
Before you begin the installation, determine the following:

- Where do you want to install the utility on your hard disk?
By default, the installer places the utility in a folder named “Fiery” on the top level of your hard disk.
- What do you want to name the utility folder in the Windows\Start Menu\Programs folder?
By default, the installer names the folder “Fiery.”

TO INSTALL FIERY DOWNLOADER:

1. On the User Software CD, browse to the English\Instalrs folder.
2. To install Fiery Downloader, double-click to open the Download\Disk1 folders.
3. Double-click the Setup.exe icon.

4. Follow the instructions in the Setup dialog boxes to complete installation.



Use the table below as a guide when installing Fiery Downloader. For specific instructions, read the information in each dialog box.

Name of dialog box:	Action:	When finished:
Welcome	Read the Setup program introduction.	Click Next.
Choose Destination Location	Specify a hard disk location for the installed utility software.	Click Next.
Select Program Folder	Specify a folder name for the utility software located in the Programs menu.	Click Next.
Start Copying Files	Verify the information in the Current Settings area.	Click Next.
Information	Acknowledge that the software installation is complete.	Click OK.

Command WorkStation

The Command WorkStation software installer is on the User Software CD. In addition to the Command WorkStation application software, the installer installs Java files necessary to use Fiery Setup on the Command WorkStation. Before you begin this installation, determine the following:

- Where do you want to install the software on your hard disk?

By default, the installer places the Command WorkStation software in a folder named “Cstation” on the top level of your hard disk.

- What do you want to name the Command WorkStation folder in the Windows\Start Menu\Programs folder?

By default, the installer names the folder “Command WorkStation.”

- Do you want to place a shortcut to the Command WorkStation application in your Windows\Start Menu\Programs\StartUp folder?

Placing a shortcut in the StartUp folder automatically launches the Command WorkStation application every time you restart your computer.

TO INSTALL COMMAND WORKSTATION SOFTWARE:

1. On the User Software CD, double-click to open the English\Instalrs\CWS\Disk1 folders.
2. Double-click the Setup.exe icon.
3. Follow the instructions in the Setup dialog boxes to complete installation of Command WorkStation software.

Use the table below as a guide when installing Command WorkStation software. For specific instructions, read the information in each dialog box.

Name of dialog box:	Action:	When finished:
Welcome	Read the Setup program introduction.	Click Next.
Choose Destination Location	Specify a hard disk location for the installed Command WorkStation software.	Click Next.

Name of dialog box:	Action:	When finished:
Select Program Folder	Specify a folder name for the Command WorkStation software located in the Programs menu.	Click Next.
Start Copying Files	Verify the information in the Current Settings area.	Click Next.
Question	Indicate if you want to place a shortcut to the Command WorkStation application in your StartUp folder.	Click Yes or No.
Java (TM) Support for Internet Explorer	Indicate whether you want to install Java files onto your hard disk. These files may be necessary for using Fiery Setup on the Command WorkStation.	Click Yes or No.
Java (TM) Support for Internet Explorer	Read the License Agreement.	Click Yes.
Java (TM) Support for Internet Explorer	Acknowledge that the software installation is complete.	Click OK.
Java (TM) Support for Internet Explorer	Indicate that you want to restart your computer in order to use the Command WorkStation software	Click Yes.

To provide improved stability on Windows computers where the Command WorkStation software is installed, you also need to install the Microsoft Common Control update (provided on the User Software CD).

TO INSTALL THE MICROSOFT COMMON CONTROL UPDATE:

1. On the User Software CD, double-click to open the English\Instalrs\CWS\comctl32 folders.
2. Double-click on the 40Comupd.exe icon.

3. Click Yes to install the update.
4. Read the License Agreement and click Yes.
Some files are copied to your hard disk.
5. Click OK to acknowledge the installation of the update.
6. Click Yes to restart your computer.
You must restart for the new settings to take effect.

Using the software for the first time

Before you can use the newly installed software, you must properly configure the connection to the Fiery XJ.

Configuring the connection to the Fiery XJ

The first time you use one of the Fiery utilities or the Command WorkStation, you are prompted to configure the connection to the Fiery XJ. The same configuration is used for Fiery Downloader and the Command WorkStation, so any change in the configuration affects both of these.

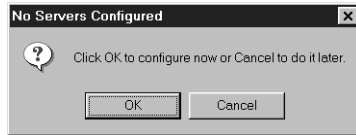
BEFORE YOU BEGIN:

- If you are using IPX/SPX, print the Configuration page from the Control Panel and note the IPX address and Server Name (in Server Setup) for the Fiery XJ.
In general, you should use the Ethernet IPX address.
- If you are using TCP/IP, print the Configuration page from the Control Panel and note the IP Address of the Fiery XJ.

You can also set up a Domain Name Server (DNS) for the IP address of the Fiery XJ in the HOSTS file and use that name. See your Windows system documentation for information.

TO CONFIGURE THE CONNECTION TO THE FIERY XJ:

1. Launch Fiery Downloader or the Command WorkStation by double-clicking its icon or by choosing it from the Start>Programs menu.
2. Click OK.



3. Enter the appropriate information for the Fiery XJ.

Nickname—Enter a name for the Fiery XJ. This name can be any name you wish; it does not have to match the actual Server Name of the Fiery XJ.

NOTE: The Nickname cannot contain any of the following seven characters:
[] _ " ' <space> <tab>

Protocol—Choose the type of network protocol you are using from the pop-up menu.

NOTE: Command WorkStation software is supported over both TCP/IP and IPX, but only with Windows 95.

Server Name—If you are using the TCP/IP protocol, enter the IP address (or DNS name) of the Fiery XJ. If you are using the IPX protocol, enter the actual Server Name of the Fiery XJ as it was defined during Server Setup.

IPX Address—(This area is enabled only if you choose IPX from the Protocol pop-up menu.) Enter the IPX Address of the Fiery XJ.

New Device—Enter the name of the device that the Fiery XJ is connected to: DocuColor. This device name appears in the Printer Setup section of the Configuration page.

For TCP/IP networks

For IPX/SPX networks

4. When you have entered all the information, click Add.
5. With the device name (DocuColor) selected in the Devices list, click OK.

The Fiery XJ appears in the list of available servers. The first line of the entry displays the nickname you gave the server, followed by the protocol you chose. The second line displays the device name.

6. With the device name (DocuColor) selected in the list of Available Servers, click OK to begin using the software.

Modifying the configuration

You should edit the configuration whenever there is any change to your Fiery XJ or network, such as a Server Name, IP Address/IPX Address, or device change. First change the specific Fiery XJ Setup information before configuring the connection.

TO MODIFY THE CONFIGURATION:

1. To edit information for a Fiery XJ in the list of available servers, select the Fiery XJ by its nickname and click **Modify**. Edit information in the **Modify Server Settings** dialog box as necessary, and click **OK** when finished.
2. To add a new Fiery XJ to the list of available servers, click **Add**. Configure the **Add New Server** dialog box as outlined in step 3 through step 5, starting on page 40.
3. To remove a Fiery XJ from the list of available servers, select the Fiery XJ by its nickname and click **Remove**; then click **Yes** in the **Remove** dialog box.

Copying color files from the User Software CD

You can copy additional color files from the User Software CD to your hard disk.

The User Software CD contains the following color files:

Icm folder	ICM printer profile specially designed for use with the Fiery XJ, your particular copier model, and the Windows color management system. For instructions on installing this see “Installing the Fiery XJ ICM printer profile for Windows 95” on page 44.
Photoshp folder	Separation Tables for use with Adobe Photoshop and the Fiery XJ. The Separation Tables match RGB-to-CMYK conversions performed in Photoshop to those performed on the Fiery XJ by color rendering dictionaries (CRDs). Calrgb.ams, a monitor settings file that sets the proper source color space. For instructions on installing these files, see “Installing files for Adobe Photoshop” on page 44.

Clrfiles folder
(inside English
folder)

Cmyk_ref.ps, an 11-page, letter-size PostScript file to use for reference when defining CMYK colors in applications.

PANTONE.ps, a 19-page, letter-size PostScript file that indicates the closest equivalent of PANTONE coated colors that the Fiery XJ and your particular copier model can produce. The method used to print the Pantone.ps file differs depending on the Spot Color Matching setting. For more information, see the *Printing Guide* and the *Color Guide*.

Rgb_01.doc, a file you can print from Microsoft Word 6.0 or later to view available RGB colors.

Rgb_02.ppt, a file you can print from PowerPoint 4.0 or later to view available RGB colors.

Calibrat folder
(inside Clrfiles
folder)

Four PostScript measurements files of color patches: custom21.ps, custom34.ps, stand21.ps, and stand34.ps.

The numbers in the filenames refer to the number of patches on the page.

The Custom files are provided to enable you to download measurement patches that incorporate the copier's current calibration set. The Standard files are provided to enable you to download standard measurement patches that ignore the copier's current calibration set.

NOTE: These files are provided for expert users and should not be used for day-to-day calibration.

Demo.meas

Demo Measurement, a sample measurements file for use with the Command WorkStation Fiery Print Calibrator. This file is for *demonstration purposes only* and should not be used to calibrate the Fiery XJ.

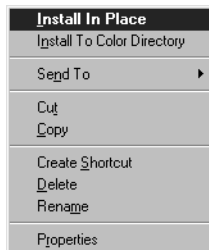
Installing the Fiery XJ ICM printer profile for Windows 95

Use the following procedure to install the Fiery XJ ICM printer profile.

NOTE: The ICM printer profile should *not* be installed for printing with the Microsoft Office 97 suite of applications. If you print from Microsoft Office 97 with the ICM profile installed, JPEG, BMP, and TIFF images print incorrectly.

TO INSTALL THE ICM PROFILE:

1. On the User Software CD, open the Icm folder.
2. Copy the ICM profile that corresponds to your copier to the Windows\System\Color folder on your hard disk.
Select “Efx4050.icm.”
3. In the Color folder, right-click to select the ICM profile.
4. Choose Install in Place from the menu that appears.



In the Windows\System\Color folder, the icon for the ICM profile is now white, indicating that it is installed.

Installing files for Adobe Photoshop

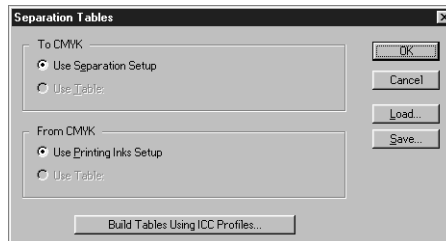
If you use Adobe Photoshop, install the Separation Tables and the Calrgb.ams monitor settings file for best color printing results. These files are found on the User Software CD in the Photoshop folder.

Loading the Separation Tables

The Separation Tables enable RGB-to-CMYK conversions within Photoshop that correspond to conversions performed by color rendering dictionaries on the Fiery XJ. The procedure you use depends on the version of Photoshop you are using.

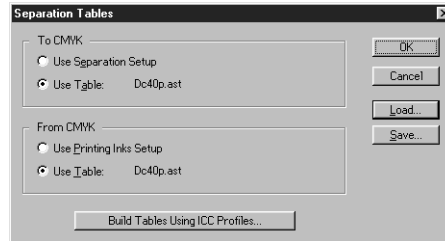
TO LOAD THE SEPARATION TABLES FOR PHOTOSHOP 4.0:

1. On the User Software CD, open the Photoshop folder.
2. Copy the files "Dc40p.ast" and "Dc40s.ast" to your Adobe Photoshop folder.
3. Launch Photoshop.
4. From the File menu, choose Color Settings, and from the Color Settings submenu, choose Separation Tables.
5. In the Separation Tables dialog box, click Load.



6. Browse to the Adobe Photoshop folder, select the appropriate file, and click Open. Select the Dc40p.ast file for separating *photographic* RGB images to CMYK. Select the Dc40s.ast file for separating *solid color* RGB images to CMYK.

7. Verify that the file you selected appears after “Use Table:” in both places and click OK.



Separation tables remain loaded the next time you start Photoshop, unless you remove them.

TO LOAD THE SEPARATION TABLES FOR PHOTOSHOP 5.0:

1. Copy the files “Dc40p.ast” and “Dc40s.ast” to your Adobe Photoshop folder.
2. Launch Photoshop.
3. From the File menu, choose Color Settings, and from the Color Setting submenu, choose CMYK setup.
4. In the CMYK Setup dialog box, choose Tables for CMYK Model and click Load.
5. Browse to the Adobe Photoshop folder, select the appropriate file, and click Open.
Select the Dc40p.ast file for separating *photographic* RGB images to CMYK.
Select the Dc40s.ast file for separating *solid color* RGB images to CMYK.
6. Verify that the file you selected appears after “From CMYK Table” in both places and click OK.

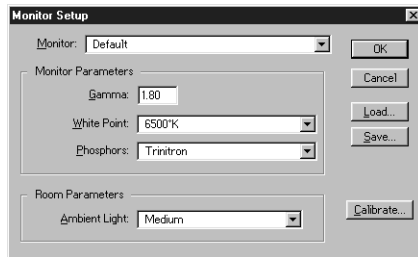
Separation tables remain loaded the next time you start Photoshop, unless you remove them.

Loading the monitor settings file

The Calrgb.ams monitor settings file for Photoshop defines the source color space for printing to the Fiery XJ. The procedure you use depends on the version of Photoshop you are using.

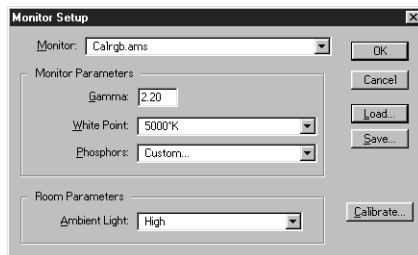
TO LOAD THE MONITOR SETTINGS FILE FOR PHOTOSHOP 4.0:

1. On the User Software CD, open the Photoshop folder.
2. Copy the Calrgb.ams file to your Adobe Photoshop folder.
3. Launch Photoshop.
4. From the File menu, choose Color Settings, and from the Color Settings submenu, choose Monitor Setup.
5. In the Monitor Setup dialog box, click Load.



6. Browse to your Adobe Photoshop folder, select the Calrgb.ams file, and click Open.

The Calrgb.ams file appears as the selection in the Monitor pop-up menu of the Monitor Setup dialog box.



7. Under Room Parameters, set Ambient Light to High and click OK.

TO LOAD THE MONITOR SETTINGS FILE FOR PHOTOSHOP 5.0:

1. On the User Software CD, open the Photoshp folder.
2. Copy the Calrgb.ams file to your Adobe Photoshop folder.
3. Launch Photoshop.
4. From the File menu, choose Color Settings, and from the Color Settings submenu, choose RGB Setup.
5. In the RGB Setup dialog box, click Load.
6. Browse to your Adobe Photoshop folder, select the Calrgb.ams file, and click Open.
The Calrgb.ams file appears as the selection in the RGB pop-up menu of the RGB Setup dialog box.
7. Click OK.

Installing User Software on a Mac OS Computer

The general steps for installing the Fiery XJ user software and setting up printing on a Mac OS-based computer are:

- Install the Adobe PostScript printer driver and Fiery XJ PostScript Printer Description file (PPD).
- Set up the Fiery XJ in the Chooser.
- Install Fiery Downloader.
- Install the screen fonts.
- Install the ColorSync™ profiles.
- Copy additional color-reference and application-specific files from the User Software CD as needed.

Installing Mac OS software

The Installers folder on the User Software CD contains the following installer folders:

- ColorSync™ Profiles—Fiery XJ ColorSync Profiles installer
- Fiery Downloader—Fiery Downloader installer
- Printer Driver—Adobe PostScript printer driver and PPD installer

NOTE: An installer is not provided for the Mac OS screen fonts; they must be copied directly from the User Software CD to the System Folder:Fonts folder on your hard disk. For instructions, see “Screen fonts” on page 55.

In addition, the User Software CD contains various color files. These files must be copied or installed from the CD and placed in the appropriate locations on your hard disk (see “Copying color files from the User Software CD” on page 56).

- PostScript CMYK color reference file
- PostScript PANTONE Coated color reference file

- RGB color reference files for specifying colors from Microsoft Word and PowerPoint
- Separation tables and a monitor settings file for use with Adobe Photoshop

NOTE: If you operate the Fiery XJ in a copy shop, quick print shop, or service bureau, you might want to provide copies of the printer driver, PPD file, separation tables, and relevant documentation to customers. This ensures that jobs they prepare are properly formatted for printing to the Fiery XJ.

Downloading printer files with the Installer WebTool

Installers for the Fiery XJ printer files can be downloaded from the Fiery XJ with the Installer WebTool (if the site administrator has enabled Internet access to the Fiery XJ). For instructions, see “Using the Installer WebTool” on page 64.

Once you download the installers, the installation process is identical to installing from the User Software CD.

Setting up PostScript printing with Mac OS

To set up the Fiery XJ as a PostScript printer, you must install the Adobe PostScript printer driver and the PPD file that corresponds to your copier. The AdobePS printer driver and PPD file are provided on the User Software CD.

Printer drivers provide a way to communicate information on print jobs between your applications, the Fiery XJ, and any other PostScript printer connected to your computer.

You can use the following procedures whether you are installing from the User Software CD or with installer files downloaded using the Installer WebTool.

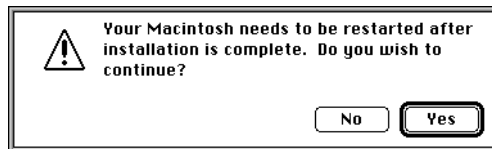
TO INSTALL THE ADOBEPS PRINTER DRIVER AND PPD FILE:

1. If you are installing from the CD, open the Installers:Printer Driver folder.

If you are installing from the installer files you downloaded with the Installer WebTool, open the Printer Driver folder on your hard disk.

2. Double-click the AdobePS Installer icon.

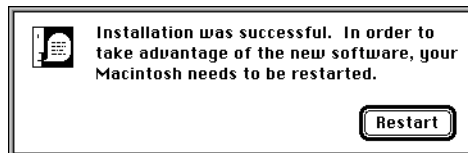
A warning dialog box appears.



3. Click Yes to continue with installation of printer driver software, and to confirm that your computer must be restarted after installation.

The AdobePS Installer installs the Adobe PostScript printer driver, the PPD file that corresponds to your copier, and the Apple Chooser.

4. Click Restart when installation is complete.



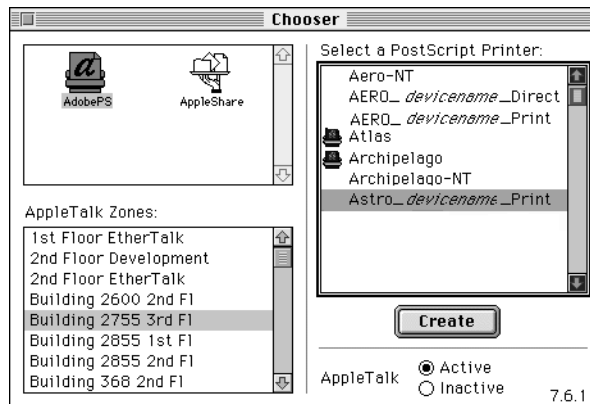
Setting up the Fiery XJ in the Chooser

After you install the AdobePS printer driver and PPD file (see “Setting up PostScript printing with Mac OS” on page 50), you need to set up the Fiery XJ in the Chooser in order to take full advantage of its features. This section describes how to set up the Fiery XJ with the AdobePS printer driver.

TO SET UP THE FIERY XJ IN THE CHOOSER:

1. Select Chooser from the Apple menu.
2. Click the AdobePS icon.

Make sure AppleTalk is set to Active.



3. Select the correct AppleTalk Zone, if necessary.
4. Select the Fiery XJ from the “Select a PostScript Printer” list, and click Setup.
The Fiery XJ appears in the list in the form of <server name>_<device name>_<print connection>. The device name (DocuColor) is the name of your copier. The AdobePS printer driver automatically selects the correct PPD file for your Fiery XJ.

NOTE: The Hold queue for the Fiery XJ is always enabled; the Print queue and the Direct connection may also be available. If more than one Fiery XJ print connection is available, you must perform step 4 for each connection.

5. Close the Chooser.

Installing Fiery XJ software and fonts

Before you begin each of the following installation procedures, determine where you want to install each item on your hard disk. By default, the files are placed in the following locations:

- The ColorSync Profiles are placed in the System Folder:Preferences folder on your hard disk.

If your system uses ColorSync, you must install these profiles in the ColorSync Profiles folder inside the System Folder:Preferences folder. You should install the ColorSync profiles only if your system uses them.

- Fiery Downloader is placed in a folder named “Fiery” on the top level of your hard disk.

NOTE: An installer is not provided for the Mac OS screen fonts; they must be copied directly from the User Software CD to the System Folder:Fonts folder on your hard disk. For instructions, see “Screen fonts” on page 55.

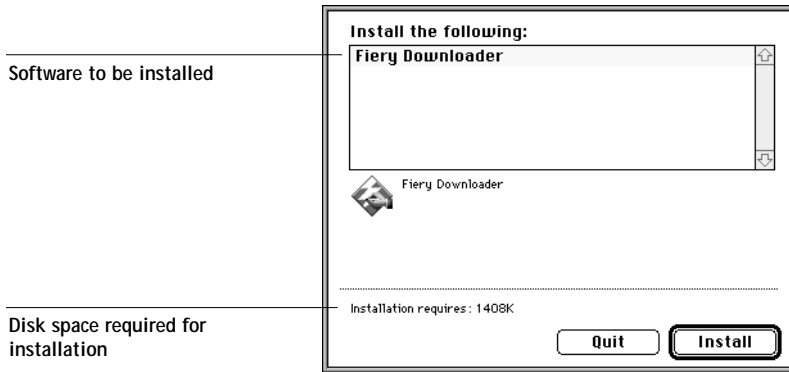
TO INSTALL MAC OS SOFTWARE:

1. On the User Software CD or your hard disk, double-click to open the Installers folder.

If you are installing:	Double-click:
ColorSync profiles	ColorSync™ Profiles Installer folder
Fiery Downloader	Fiery Downloader folder

2. Double-click the Installer icon.

3. Click Install.



4. Specify the locations into which to install each item.

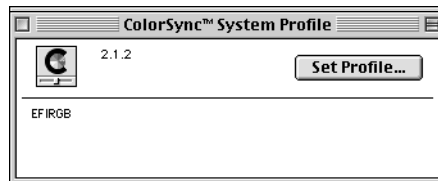
Use the table below as a guide when installing software.

If you are installing:	Action:	To install:
ColorSync Profiles	Browse to the System Folder: Preferences:ColorSync™ Profiles folder. Perform the steps in “To set the ColorSync system profile:” on page 55 after installation is complete.	Click “Install into ColorSync™ Profiles.”
Fiery Downloader	Specify a hard disk location for the installed Fiery Downloader software.	Click Install.

5. If prompted, click Quit to close the software installer.

TO SET THE COLORSYNC SYSTEM PROFILE:

1. For ColorSync Profiles, choose Control Panels>ColorSync System Profile from the Apple Menu.
2. Click Set Profile.
3. From the list of ColorSync profiles, select EFIRGB ICC and click Select.



When selected as the ColorSync system profile, EFIRGB ICC sets the optimal source color space for printing to the Fiery XJ. The color space set by the EFIRGB ICC profile is the same as that set by the EFIRGB setting of the RGB Source print option. For more information, see the *Color Guide*.

NOTE: The RGB Source print option setting overrides the ColorSync system profile setting.

4. Close the ColorSync System Profile window.

Screen fonts

The User Software CD includes screen fonts that correspond to the 136 built-in printer fonts on the Fiery XJ. In order to view and use these fonts, you must copy them from the User Software CD to your hard disk.

TO INSTALL SCREEN FONTS:

1. On the User Software CD, open the Fonts folder.
2. Copy the fonts that you want to install to the System Folder:Fonts folder on your hard disk.

If you have any applications open, you must quit and relaunch them before the newly installed screen fonts are available.

Copying color files from the User Software CD

You can copy additional color files from the User Software CD to your hard disk. Many of the files are PostScript files that you can download and print using Fiery Downloader.

The User Software CD contains the following color files:

- | | |
|--------------------|---|
| Photoshop folder | <p>Separation Tables for use with Adobe Photoshop and the Fiery XJ. The Separation Tables match RGB-to-CMYK conversions performed in Photoshop to those performed on the Fiery XJ by color rendering dictionaries (CRDs). Calibrated RGB, a monitor settings file that sets the proper source color space.</p> <p>For instructions on installing these files, see “Installing files for Adobe Photoshop” on page 57.</p> |
| Color Files folder | <p>CMYK Color Reference.ps, an 11-page, letter-size PostScript file to use for reference when defining CMYK colors in applications.</p> <p>PANTONE Book.ps, a 19-page, letter-size PostScript file that indicates the closest equivalent of PANTONE coated colors that the Fiery XJ and your particular copier model can produce. The method used to print the PANTONE Book.ps file differs depending on the Spot Color Matching setting. For more information, see the <i>Printing Guide</i> and the <i>Color Guide</i>.</p> <p>RGB page 01, a file you can print from Microsoft Word 6.0 or later to view available RGB colors.</p> <p>RGB page 02, a file you can print from PowerPoint 4.0 or later to view available RGB colors.</p> |

Installing files for Adobe Photoshop

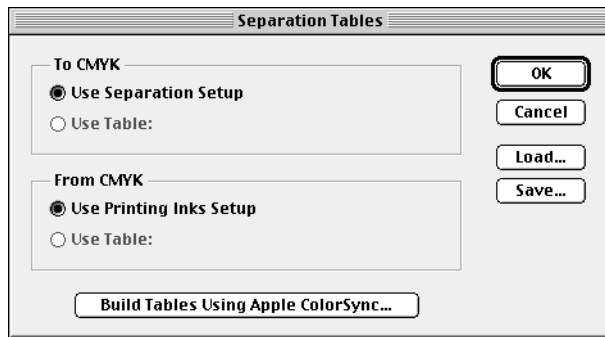
If you intend to use Adobe Photoshop, install the Separation Tables and the monitor settings file for best color printing results. These files are located on the User Software CD in the Photoshop folder.

Loading the Separation Tables

The Separation Tables enable RGB-to-CMYK conversions (in Photoshop), which correspond to conversions performed by color rendering dictionaries on the Fiery XJ. The procedure you use depends on the version of Photoshop you are using.

TO LOAD THE SEPARATION TABLES FOR PHOTOSHOP 4.0:

1. On the User Software CD, open the Photoshop folder.
2. Copy the files "Fiery XJ DocuColor 40.P" and "Fiery XJ DocuColor 40.S" to your Adobe Photoshop folder.
3. Launch Photoshop.
4. From the File menu, choose Color Settings, and from the Color Settings submenu, choose Separation Tables.
5. In the Separation Tables dialog box, click Load.

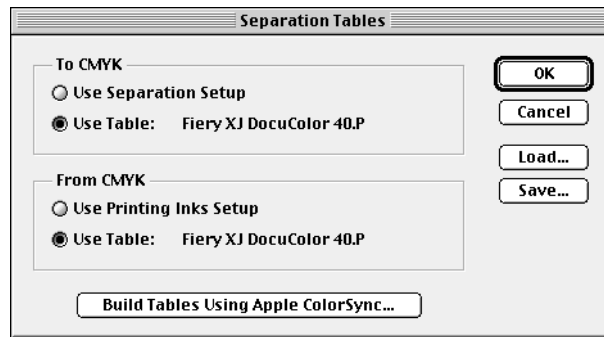


6. Browse to your Adobe Photoshop folder, select the appropriate Separation Table file, and click Open.

Select the Fiery XJ DocuColor 40.P file for separating *photographic* RGB images to CMYK.

Select the Fiery XJ DocuColor 40.S file for separating *solid color* RGB images to CMYK.

7. Verify that the file you selected appears after "Use Table:" in both places and click OK.

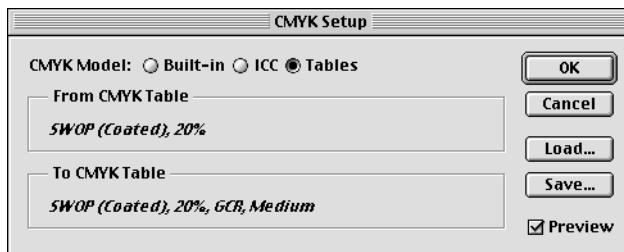


Separation tables remain loaded the next time you start Photoshop, unless you remove them.

TO LOAD THE SEPARATION TABLES FOR PHOTOSHOP 5.0:

1. On the User Software CD, open the Photoshop folder.
2. Copy the files "Fiery XJ DocuColor 40.P" and "Fiery XJ DocuColor 40.S" to your Adobe Photoshop folder.
3. Launch Photoshop.

4. From the File menu, choose Color Settings, and from the Color Settings submenu, choose CMYK Setup.
5. In the CMYK Setup dialog box, choose Tables for CMYK Model and click Load.

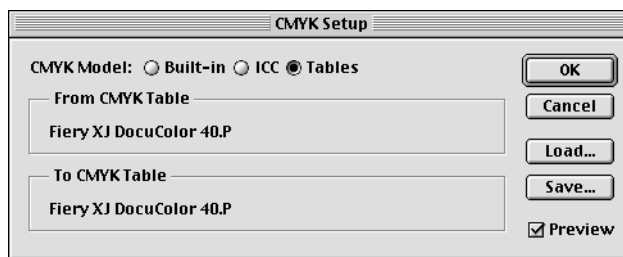


6. Browse to your Adobe Photoshop folder, select the appropriate Separation Table file, and click Open.

Select the Fiery XJ DocuColor 40.P file for separating *photographic* RGB images to CMYK.

Select the Fiery XJ DocuColor 40.S file for separating *solid color* RGB images to CMYK.

7. Verify that the file you selected appears after "From CMYK Table" in both places and click OK.



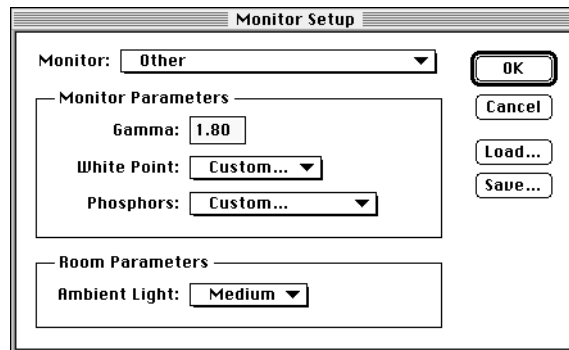
Separation tables remain loaded the next time you start Photoshop, unless you remove them.

Loading the monitor settings file

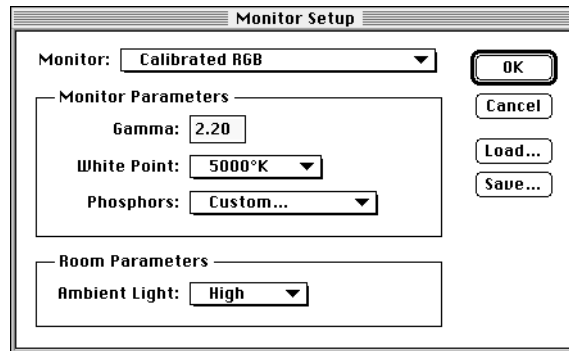
The Calibrated RGB monitor settings file for Photoshop defines the source color space for printing to the Fiery XJ. The procedure you use depends on the version of Photoshop you are using.

TO LOAD THE MONITOR SETTINGS FILE FOR PHOTOSHOP 4.0:

1. On the User Software CD, open the Photoshop folder.
2. Copy the Calibrated RGB file to your Adobe Photoshop folder.
3. Launch Photoshop.
4. From the File menu, choose Color Settings, and from the Color Settings submenu, choose Monitor Setup.
5. In the Monitor Setup dialog box, click Load.



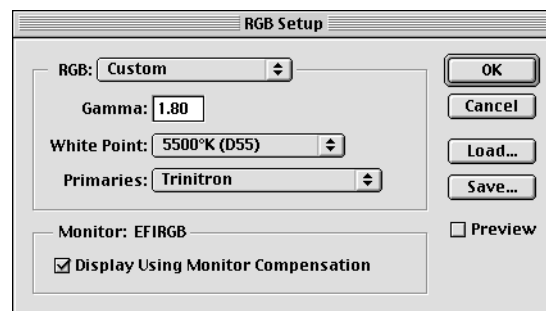
- Browse to your Adobe Photoshop folder, select the Calibrated RGB file, and click Open. The Calibrated RGB file appears as the selection in the Monitor pop-up menu of the Monitor Setup dialog box.



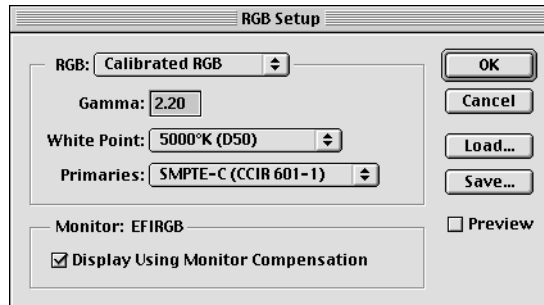
- Under Room Parameters, set Ambient Light to High and click OK.

TO LOAD THE MONITOR SETTINGS FILE FOR PHOTOSHOP 5.0:

- On the User Software CD, open the Photoshop folder.
- Copy the Calibrated RGB file to your Adobe Photoshop folder.
- Launch Photoshop.
- From the File menu, choose Color Settings, and from the Color Settings submenu, choose RGB Setup.
- In the RGB Setup dialog box, click Load.



6. Browse to your Adobe Photoshop folder, select the Calibrated RGB file, and click Open. The Calibrated RGB file appears as the selection in the RGB pop-up menu of the RGB Setup dialog box.



7. Click OK.

Downloading Installers with Fiery WebTools

Fiery WebTools allow you to manage your Fiery XJ remotely from the Internet or from your company's intranet. The Fiery XJ has its own home page, from which you are able to select from a variety of functions including WebSetup, Status, WebSpooler, WebLink, and Installer.

For more information on using Fiery WebTools, see the *Printing Guide* and the *Job Management Guide*.

Setting up Fiery WebTools

In order for network users to access and use Fiery WebTools, you need to set certain Fiery XJ options in Setup. You also need to prepare each user's workstation to communicate with the Fiery XJ over the Internet or intranet.

For more information about Fiery XJ Setup, see the *Configuration Guide*.

TO VERIFY THAT FIERY WEBTOOLS ARE SET UP ON THE FIERY XJ:

1. Print the Configuration page from the Control Panel or from the Command WorkStation.
For instructions, see the *Job Management Guide*.
2. On the Configuration page, check the following:
 - In Network Setup>Port Setup, confirm that the appropriate network type (Ethernet or Token Ring) is enabled.
 - In Network Setup>Protocol Setup>TCP/IP Setup, confirm that TCP/IP is enabled and that there is a valid, unique IP Address for the Fiery XJ.
 - In Network Setup>Service Setup, confirm that Web Services are enabled.
3. If all the conditions listed in Step 2 are currently set, the Fiery XJ is properly set up to use Fiery WebTools.

If any of the conditions listed in Step 2 are not currently set, you must change them (as described in the *Configuration Guide*) before you can use Fiery WebTools.

TO SET UP CLIENT WORKSTATIONS FOR USE OF FIERY WEBTOOLS:

1. Enable TCP/IP networking.
2. Make sure the workstation has a valid, unique IP address.
3. Make sure the workstation is installed with one of the following Internet browsers:
Windows 95 and Windows NT 4.0—*Either* Netscape Communicator v4.0.x *or* Microsoft Internet Explorer v3.0.2 or 4.0.x
Mac OS—Netscape Communicator v4.0.x

NOTE: Netscape and Microsoft continue to release frequent updates to their browsers. As support cannot be guaranteed for all versions, use the versions specified above for best results.
4. Make sure Java is enabled in your Internet browser.
For more information on setting up the Fiery XJ and your network, see the *Configuration Guide*.

Using the Installer WebTool

The Installer WebTool contains the same printer driver installers as the User Software CD, allowing you to easily download printer files from the Fiery XJ to your workstation.

TO DOWNLOAD PRINTER FILES INSTALLERS WITH THE INSTALLER WEBTOOL:

1. Launch your Internet or intranet browser and enter the DNS name or IP address of the Fiery XJ.
2. Select a login level, enter a password if necessary, and click OK.
No password is required to log in as Guest. You have full access to the Installer WebTool when logged in as Guest.

3. Click the Installer button.



4. Under the name of your operating system, click "Printer Files."

For Windows computers, a dialog box appears, prompting you to save the file "Prntdrv.exe" to the location you choose.

For Mac OS computers, a folder named "Printer Driver" is downloaded to the desktop in a BinHex-encoded, compressed format. If your internet browser is equipped with an expander utility such as StuffIt Expander, the folder will be decoded and decompressed automatically.

5. For Windows computers, browse to the location where you want to save the Prntdrv.exe file and click Save.

For Mac OS computers, if the Printer Driver folder was not automatically decoded and decompressed, launch a utility that will perform that function.

6. For Windows computers, double-click the Prntdrv.exe file, browse to the location where you want to install the folder, and click Next.

The folder is installed to the location you specified.

7. Install the appropriate printer files for your operating system.

For instructions:	See:
Windows 95	“Setting up PostScript printing with Windows 95” on page 2
Windows 3.1x	“Setting up PostScript printing with Windows 3.1x” on page 18
Windows NT 4.0	“Setting up PostScript printing with Windows NT 4.0” on page 22
Mac OS computers	“Setting up PostScript printing with Mac OS” on page 50.

Troubleshooting

This chapter provides troubleshooting tips for some problems that may arise when performing the procedures in this manual.

On a Windows computer

Setting up IPX (Novell) printing for Windows NT Workstation

If you have problems installing the Fiery XJ with Windows NT, try installing another PostScript printer (such as the Apple LaserWriter IIg), and then install the Fiery XJ. Installing another printer insures that all files are properly installed and available. For instructions, see your Windows NT documentation.

Installing the Adobe PostScript Printer Driver

If you are reinstalling the Adobe PostScript Printer Driver, delete any previous versions and related files before installing. Search for and delete all files named Efx*. * in the Windows\System folder and the Windows\System\Color folder. See the Adobe README file included with the printer driver for more information.

Problems with the Fiery utilities on Windows 95 or Windows NT

1. If you are using Windows 95, make sure that IPX/SPX and TCP/IP networking protocols are both enabled.
See “Completing the Windows 95 IPX/SPX or IPX (Novell) connection” on page 10.
2. Make sure that the connection is configured correctly for your site.
To check the current configuration, launch a Fiery utility and choose Open from the File menu. Select the Fiery XJ and click Modify to see current settings. If the settings are incorrect, you can change them in this dialog box.

On a Mac OS computer

Setting up the Fiery XJ in the Chooser

If auto-setup does not work and you are prompted to select the PPD, select the Fiery XJ file in your System Folder:Extensions:Printer Descriptions folder.

Select “Fiery XJ DocuColor 40 Color Server v5.0.”

Installing screen fonts

If you experience problems installing the PostScript screen fonts from the User Software CD to the System Folder:Fonts folder, try the following:

1. Quit all applications and close all windows.
2. Create a new folder and name it “Uninstalled Fonts.”
This folder must be located outside of the System Folder.
3. Move fonts that you are not using from the System Folder:Fonts folder to the Uninstalled Fonts folder.
4. Continue to copy fonts from the User Software CD to the System Folder:Fonts folder.
5. Create an alias to the System Folder:Fonts folder and to the Uninstalled Fonts folder.
6. Place both aliases on your desktop.
7. When necessary, use the aliases to open both folders and move fonts between them.
If you have any applications running, you must quit and relaunch them in order to view and use the newly installed fonts.

Alternately, you can try combining fonts from multiple suitcases into a single suitcase.

Index

A

Adobe PostScript 3 fonts xi
Adobe PostScript printer driver, *see* PostScript printer driver
amount of memory required x, xii, xiv, xv
AppleTalk
 connecting to Mac OS 52
 supported by color server x

B

Berkeley lpd protocol xiv
BMP images 44

C

cable, color server x
Calrgb.ams 44, 47 to 48
Chooser
 selecting the server in 52
 setting up color server in 68
client utilities, installing 35
Clrfiles folder 43
CMYK color reference file 1, 43, 49, 56
Color Files folder 56
color management files xi, xii
color reference files xii, 2, 42, 50, 56
color rendering dictionaries, *see* CRDs
color server specifications x
ColorSync color management files xii, 49, 54
ColorWise color management files xi
Command WorkStation
 installing 37 to 38
 system requirements xv
Configuration page 14, 39
connecting
 Windows 3.1x with IPX (Novell) 21
 Windows 95 with IPX/SPX or IPX (Novell) 10
 Windows 95 with parallel port 6

Windows 95 with SMB printing 14
Windows NT 4.0 with IPX (Novell) 30
Windows NT 4.0 with parallel port 27
Windows NT 4.0 with TCP/IP 28

connection, configuring 39
CRDs (color rendering dictionaries) 42
custom21.ps (Windows) 43
custom34.ps (Windows) 43

D

DB-25 connector xv
Demo.mea file 43
device name 29, 40
DNS name xiii, xiv, 40
Domain Name Server (DNS) 39

E

EFIRGB ICC 55
EPS files xi
Ethernet 100BaseTX cable x
Ethernet 10BaseT cable x
EtherTalk x, xiv

F

Fast Ethernet 100BaseTX cable x
Fiery Downloader
 EPS files xi
 installer for Mac OS 49
 installer for Windows 1
 installing for Mac OS 54
 installing for Windows 35
 overview xi
 PDF files xi
Fiery utilities
 configuring the connection 39
 installing for Mac OS 53
 problems on Windows 95 or Windows NT 67
 requirements for Mac OS xiv

- Fiery WebTools
 - Installer xi, 2, 64 to 66
 - setting up 63
 - system requirements xiii, xiv
 - version of browser required xiii, 64
- Font Downloader x
- fonts
 - Adobe PostScript 3 xi
 - Adobe Type 1 xi
 - installing 49
 - Multiple Master xi
 - screen fonts 55
 - substituting in PDF files xi
 - troubleshooting 68
 - TrueType xi
- Fonts folder 68
- Frame Type option 12
- I**
- ICM color management files xii, 1, 42, 44
- installers
 - Mac OS 49, 50
 - Windows 1, 2
- Installers folder 49
- installing
 - ColorSync Profiles 53
 - Command WorkStation 37 to 38
 - Fiery Downloader (Mac OS) 53
 - Fiery Downloader (Windows) 35
 - ICM profile 44
 - PostScript printer driver (Mac OS) 51
 - PostScript printer driver (Windows 95) 3 to 6
 - screen fonts 55
 - software (Mac OS) 53
 - software (Windows) 35
- Instalrs folder 1
- internal name 29
- Internet Explorer xiii, 64
- IP address xiii, xiv, 14, 39
- IPX
 - system requirements xv
 - Windows 3.1x 21 to 22
 - Windows 95 13
 - Windows NT 4.0 30, 31 to 34
- IPX address 39
- IPX/SPX
 - configuring the connection 39
 - Windows 95 11
- J**
- Java 37, 64
- JPEG images 44
- M**
- Mac OS
 - copying color files 56
 - Installer WebTool 50
 - installing Fiery utilities 53
 - installing software 53
 - Power Macintosh xiv
 - screen fonts 55
 - system requirements xiv
 - troubleshooting 68
- memory
 - amount required x
- memory, amount required xii, xiv, xv
- Microsoft Office 97, *see* Office 97
- monitor settings file
 - Mac OS 60 to 62
 - Windows 47 to 48
- MS-DOS, versions required xiii
- N**
- Netscape Communicator xiii, 64
- NetWare
 - network port with Windows 3.1x 22
 - network port with Windows 95 13
- NetWare client setup
 - Windows 3.1x 21
 - Windows 95 11, 13

NetWise networking features xi
 Ntprint.inf file 32

O

Office 97 44

P

PANTONE Book.ps 56
 PANTONE Coated color reference file 49
 PANTONE color reference files 1, 43
 parallel port
 system requirements xv
 Windows 3.1x 20 to 21
 Windows 95 7 to 10
 Windows NT 4.0 27 to 30
 PDF files xi
 Photoshop
 files (Mac OS) 50, 56
 files (Windows) 1, 42
 Photoshop folder 56
 Photoshop Separation Tables
 Mac OS 57 to 60
 Windows 45 to 46
 Photoshp folder (Windows) 42
 PostScript
 printing with Mac OS 50
 printing with Windows 3.1x 18
 printing with Windows 95 2
 printing with Windows NT 4.0 22
 PostScript Level 1 xi
 PostScript Printer Description file, *see* PPD
 PostScript printer driver
 downloading 64 to 66
 installer for Mac OS 49
 installers for Windows 1
 installing for Mac OS 51
 installing for Windows 95 3 to 6
 version 3.0 for Windows 3.1x xiii
 version 4.2 for Windows 95 xiii
 version 8.5 for Mac OS xiv

PowerPoint, RGB color reference file 50, 56
 PPD

 Mac OS 51
 overview xi
 selecting files for copier 25
 Windows 3.1x 19
 Windows 95 4
 Windows NT 4.0 33

Print command (Windows) 19

printing

 Mac OS 50
 Windows 3.1x 18
 Windows 95 2
 Windows NT 4.0 26

Print Test Page option 17

Prntdrv.exe file 65

R

RAM, amount required x
 remote server management 63
 Rgb_01.doc 43
 Rgb_02.ppt 43
 RGB color reference files 2
 RGB page 01 56
 RGB page 02 56

S

Separation Tables *see* Photoshop Separation
 Tables
 Server Name 14
 SMB printing, *see* Windows 95
 Solaris, supported version xiv
 specifications, color server x
 stand21.ps (Windows) 43
 stand34.ps (Windows) 43
 SunOS, support version xiv
 System 7 xiv
 See also Mac OS

system requirements

- Command WorkStation xv
- IPX xv
- Mac OS xiv
- parallel port xv
- UNIX xiv
- Windows xii

T

TCP/IP

- configuring the connection 39
- printing software conforming to RFC1179 xiv
- supported by color server x

test page 17

thicknet cable x

thinnet cable x

TIFF images 44

Token Ring, optional kit x

troubleshooting

- Mac OS computers 68
- Windows computers 67

U

Uninstalled Fonts folder 68

UNIX workstations, system requirements xiv

unshielded twisted pair (UTP) cable x

User Software CD 35

- Adobe PS Printer Driver xi
- contents (Mac OS) 49, 50
- contents (Windows) 1
- installing from (Mac OS) 51, 56
- installing from (Windows) 2, 42
- overview xi
- troubleshooting fonts 68

utilities, *see* client utilities, Fiery WebTools**W**WebSpooler, *see* Fiery WebSpoolerWebTools, *see* Fiery WebTools

Windows

- copying color files 42
- installers 1
- installing software 35
- system requirements xii
- troubleshooting 67

Windows 3.1x

- configuration ports on 20
- connection 20
- IPX printing 21 to 22
- PPD 19
- selecting parallel port 20 to 21
- setting default printer 19
- system requirements xiii

Windows 95

- IPX/SPX 11
- parallel port 7 to 10
- PostScript printer driver 3 to 6
- SMB printing 14 to 17
- system requirements xiii

Windows NT 4.0

- IPX 31 to 34
- printing from parallel port 27 to 30
- printing requirements 26
- setting up PostScript printing 22
- system requirements xiii
- troubleshooting 67

WINS Name Server 14, 17

Word, RGB color reference file 50, 56