

Printing Guide

FIERY XJ+ 525

ELECTRONICS FOR IMAGING, INC.



Copyright © 1998 Electronics for Imaging, Inc. All rights reserved.

This publication is protected by copyright, and all rights are reserved. No part of it may be reproduced or transmitted in any form or by any means for any purpose without express prior written consent from Electronics for Imaging, Inc., except as expressly permitted herein. Information in this document is subject to change without notice and does not represent a commitment on the part of Electronics for Imaging, Inc.

The software described in this publication is furnished under license and may only be used or copied in accordance with the terms of such license.

Patents: 5,666,436; 5,553,200; 5,543,940; 5,537,516; 5,517,334; 5,506,946; 5,424,754; 5,343,311; 5,212,546; 4,941,038; 4,837,722; 4,500,919

Trademarks

EFI, the EFI logo, Fiery, the Fiery logo, EFICOLOR, and Rip-While-Print are trademarks registered in the U.S. Patent and Trademark Office. Fiery ZX, Fiery LX, Fiery Driven, the Fiery Driven logo, Command WorkStation, AutoCal, Starr Compression, Memory Multiplier, ColorWise, NetWise, and VisualCal are trademarks of Electronics for Imaging, Inc.

All Xerox product names mentioned in this publication are trademarks of the XEROX CORPORATION.

Adobe, the Adobe logo, Adobe Illustrator, PostScript, Adobe Photoshop, Adobe Separator, and Adobe PageMaker are trademarks of Adobe Systems Incorporated, registered in certain jurisdictions. EPS (Encapsulated PostScript) is a trademark of Altsys Corporation. Apple, the Apple logo, AppleShare, AppleTalk, EtherTalk, LaserWriter, and Macintosh are registered trademarks, and MultiFinder is a trademark of Apple Computer, Inc. Microsoft, MS, MS-DOS, and Windows are registered trademarks of Microsoft in the US and other countries. QuarkXPress is a registered trademark of Quark, Inc. Times, Helvetica, and Palatino are trademarks of Linotype AG and/or its subsidiaries. ITC Avant Garde, ITC Bookman, ITC Zapf Chancery, and ITC Zapf Dingbats are registered trademarks of International Typeface Corporation. Ethernet is a registered trademark of Xerox Corporation. NetWare and Novell are registered trademarks and Internetwork Packet Exchange (IPX) is a trademark of Novell, Inc. SyQuest is a registered trademark, in the United States and certain other countries, of SyQuest Technology, Inc. UNIX is a registered trademark of UNIX System Laboratories, a wholly owned subsidiary of Novell, Inc. PANTONE is a registered trademark of Pantone, Inc.

All other terms and product names may be trademarks or registered trademarks of their respective owners, and are hereby acknowledged.

Legal Notices

APPLE COMPUTER, INC. ("APPLE") MAKES NO WARRANTIES, EXPRESS OR IMPLIED, INCLUDING WITHOUT LIMITATION THE IMPLIED WARRANTIES OF MERCHANTABILITY AND FITNESS FOR A PARTICULAR PURPOSE, REGARDING THE APPLE SOFTWARE. APPLE DOES NOT WARRANT, GUARANTEE, OR MAKE ANY REPRESENTATIONS REGARDING THE USE OR THE RESULTS OF THE USE OF THE APPLE SOFTWARE IN TERMS OF ITS CORRECTNESS, ACCURACY, RELIABILITY, CURRENTNESS, OR OTHERWISE. THE ENTIRE RISK AS TO THE RESULTS AND PERFORMANCE OF THE APPLE SOFTWARE IS ASSUMED BY YOU. THE EXCLUSION OF IMPLIED WARRANTIES IS NOT PERMITTED BY SOME STATES. THE ABOVE EXCLUSION MAY NOT APPLY TO YOU.

IN NO EVENT WILL APPLE, ITS DIRECTORS, OFFICERS, EMPLOYEES OR AGENTS BE LIABLE TO YOU FOR ANY CONSEQUENTIAL, INCIDENTAL OR INDIRECT DAMAGES (INCLUDING DAMAGES FOR LOSS OF BUSINESS PROFITS, BUSINESS INTERRUPTION, LOSS OF BUSINESS INFORMATION, AND THE LIKE) ARISING OUT OF THE USE OR INABILITY TO USE THE APPLE SOFTWARE EVEN IF APPLE HAS BEEN ADVISED OF THE POSSIBILITY OF SUCH DAMAGES. BECAUSE SOME STATES DO NOT ALLOW THE EXCLUSION OR LIMITATION OF LIABILITY FOR CONSEQUENTIAL OR INCIDENTAL DAMAGES, THE ABOVE LIMITATIONS MAY NOT APPLY TO YOU. Apple's liability to you for actual damages from any cause whatsoever, and regardless of the form of the action (whether in contract, tort [including negligence], product liability or otherwise), will be limited to \$50.

Restricted Rights Legends

For defense agencies: Restricted Rights Legend. Use, reproduction, or disclosure is subject to restrictions set forth in subparagraph (c)(1)(ii) of the Rights in Technical Data and Computer Software clause at 252.227.7013.

For civilian agencies: Restricted Rights Legend. Use, reproduction, or disclosure is subject to restrictions set forth in subparagraph (a) through (d) of the commercial Computer Software Restricted Rights clause at 52.227-19 and the limitations set forth in Electronics for Imaging, Inc.'s standard commercial agreement for this software. Unpublished rights reserved under the copyright laws of the United States.

Printed in the United States of America on recycled paper.

Part Number: 45003009

CE Mark

The CE marking applied to this product symbolises Rank Xerox's declaration of conformity with the following applicable directives of the European Union as of the dates indicated.

January 1, 1996—Council Directive 70/80/CCO amended by Council Directive 93/68/EEO. Approximation of the laws of the member states related to low voltage equipment.

January 1, 1996—Council Directive 59/336/EEC. Approximation of the laws of the member states related to electromagnetic compatibility.

A full declaration defining the relevant directives and referenced standards can be obtained from your Rank Xerox representative.

WARNING: In order to allow this equipment to operate in proximity to industrial, scientific, and Medical (ISM) equipment, the external radiation from ISM equipment may have to be limited or special migration measures taken.

FCC Information

WARNING: FCC Regulations state that any unauthorized changes or modifications to this equipment not expressly approved by the manufacturer could void the user's authority to operate this equipment.

NOTE: This equipment has been tested and found to comply with the limits for a Class A digital device, pursuant to Part 15 of the FCC Rules. These limits are designed to provide reasonable protection against harmful interference when the equipment is operated in a commercial environment. This equipment generates, and uses, and can radiate radio frequency energy and, if not installed and used in accordance with the instruction manual, may cause harmful interference to radio communications. Operation of this equipment in a residential area is likely to cause interference in which case the user will be required to correct the interference at his own expense.

Industry Canada Class A Notice

This digital apparatus does not exceed the Class A limits for radio noise emissions from digital apparatus as set out in the interference-causing equipment standard entitled, "Digital Apparatus" ICES-003 from Industry Canada.

Avis de Conformation Classe A d l'Industrie Canada

Le présent appareil numérique n'émet pas de bruits radioélectriques dépassant les limites applicables aux appareils numériques de la Classe A prescrites dans la norme sur le matériel brouilleur, "Appareils Numériques" NMB-003 édictée par l'Industrie Canada.

Certificate by Manufacturer/Importer

This is to certify that the FC07 is shielded against radio interference in accordance with the provisions of VFG 243/1991. The German Postal Services have been advised that this device is being put on the market and that they have been given the right to inspect the series for compliance with the regulations.

Bescheinigung des Herstellers/Importeurs

Heirmit wird bescheinigt, dass der FC07 im Uebereinstimmung mit den Bestimmungen der VFG 243/1991 Funk-Entstort ist. Der Deutschen Bundespost wurde das Inverkehrbringen dieses Geraetes angezeigt und die Berechtigung zur Ueberpruefung der Serie auf Einhaltung der Bestimmungen eingeräumt.

RFI Compliance Notice

This equipment has been tested concerning compliance with the relevant RFI protection requirements both individually and on system level (to simulate normal operation conditions). However, it is possible that these RFI Requirements are not met under certain unfavorable conditions in other installations. It is the user who is responsible for compliance of his particular installation.

Dieses Geraet wurde einzeln sowohl als auch in einer Anlage, die einen normalen Anwendungsfall nachbildet, auf die Einhaltung der Funk-entstoerbestimmungen gepruert. Es ist jedoch moeglich, dass die Funk-entstoerbestimmungen unter unguenstigen Umstaenden bei anderen Geraetekombinationen nicht eingehalten werden. Fuer die Einhaltung der Funk-entstoerbestimmungen seigner gesamten Anlage, in der dieses Geraet betrieben wird, ist der Betreiber verantwortlich.

Compliance with applicable regulations depends on the use of shielded cables. It is the user who is responsible for procuring the appropriate cables.

Einhaltung mit betreffenden Bestimmungen kommt darauf an, dass geschirmte Ausfuehrungen gebraucht werden. Fuer die beschaffung richtiger Ausfuehrungen ist der Betreiber verantwortlich.

Software License Agreement

Before using the Software, please carefully read the following terms and conditions. BY USING THIS SOFTWARE, YOU SIGNIFY THAT YOU HAVE ACCEPTED THE TERMS OF THIS AGREEMENT. If you cannot or do not accept these terms, you may return the entire package within ten (10) days to the Distributor or Dealer from which you obtained them for a full refund.

Electronics for Imaging, Inc. grants to you a non-exclusive, non-transferable license to use the software and accompanying documentation ("Software") included with the Fiery XJ you have purchased, including without limitation the PostScript software provided by Adobe Systems Incorporated.

You may:

- a. use the Software solely for your own customary business purposes and solely with Fiery XJ;
- b. use the digitally-encoded machine-readable outline and bitmap programs ("Font Programs") provided with Fiery XJ in a special encrypted format ("Coded Font Programs") to reproduce and display designs, styles, weights, and versions of letters, numerals, characters and symbols ("Typefaces") solely for your own customary business purposes on the display window of the Fiery XJ or monitor used with Fiery XJ;
- c. use the trademarks used by Electronics for Imaging to identify the Coded Font Programs and Typefaces reproduced therefrom ("Trademarks"); and
- d. assign your rights under this Agreement to a transferee of all of your right, title and interest in and to Fiery XJ provided the transferee agrees to be bound by all of the terms and conditions of this Agreement.

You may not:

- a. make use of the Software, directly or indirectly, to print bitmap images with print resolutions of 600 dots per inch or greater, or to generate fonts or typefaces for use other than with Fiery XJ;
- b. make or have made, or permit to be made, any copies of the Software, Coded Font Programs, accompanying documentation or portions thereof, except as necessary for use with the Fiery XJ unit purchased by you; provided, however, that under no circumstances may you make or have made, or permit to be made, any copies of that certain portion of the Software which has been included on the Fiery XJ hard disk drive. You may not copy the documentation;
- c. attempt to alter, disassemble, decrypt or reverse engineer the Software, Coded Font Programs or accompanying documentation.
- d. rent or lease the Software.

Proprietary Rights

You acknowledge that the Software, Coded Font Programs, Typefaces, Trademarks and accompanying documentation are proprietary to Electronics for Imaging and its suppliers and that title and other intellectual property rights therein remain with Electronics for Imaging and its suppliers. Except as stated above, this Agreement does not grant you any right to patents, copyrights, trade secrets, trademarks (whether registered or unregistered), or any other rights, franchises or licenses in respect of the Software, Coded Font Programs, Typefaces, Trademarks or accompanying documentation. You may not adapt or use any trademark or trade name which is likely to be similar to or confusing with that of Electronics for Imaging or any of its suppliers or take any other action which impairs or reduces the trademark rights of Electronics for Imaging or its suppliers. The trademarks may only be used to identify printed output produced by the Coded Font Programs. At the reasonable request of Electronics for Imaging, you must supply samples of any Typeface identified with a trademark.

Confidentiality

You agree to hold the Software and Coded Font Programs in confidence, disclosing the Software and Coded Font Programs only to authorized users having a need to use the Software and Coded Font Programs as permitted by this Agreement and to take all reasonable precautions to prevent disclosure to other parties.

Remedies

Unauthorized use, copying or disclosure of the Software, Coded Font Programs, Typefaces, Trademarks or accompanying documentation will result in automatic termination of this license and will make available to Electronics for Imaging other legal remedies.

Limited Warranty And Disclaimer

Electronics for Imaging warrants that, for a period of ninety (90) days from the date of delivery to you, the Software under normal use will perform without significant errors that make it unusable. Electronics for Imaging's entire liability and your exclusive remedy under this warranty (which is subject to you returning Fiery XJ to Electronics for Imaging or an authorized dealer) will be, at Electronics for Imaging's option, to use reasonable commercial efforts to attempt to correct or work around errors, to replace the Software with functionally equivalent software, or to refund the purchase price and terminate this Agreement. Some states do not allow limitations on duration of implied warranty, so the above limitation may not apply to you.

Except for the above express limited warranty, Electronics for Imaging makes and you receive no warranties or conditions on the Products, express, implied, or statutory, and Electronics for Imaging specifically disclaims any implied warranty or condition of merchantability or fitness for a particular purpose.

For warranty service, please contact your authorized service/support center.

EXCEPT FOR THE ABOVE EXPRESS LIMITED WARRANTY, ELECTRONICS FOR IMAGING MAKES AND YOU RECEIVE NO WARRANTIES OR CONDITIONS ON THE SOFTWARE OR CODED FONT PROGRAMS, EXPRESS, IMPLIED, STATUTORY, OR IN ANY OTHER PROVISION OF THIS AGREEMENT OR COMMUNICATION WITH YOU, AND ELECTRONICS FOR IMAGING SPECIFICALLY DISCLAIMS ANY IMPLIED WARRANTY OR CONDITION OF MERCHANTABILITY OR FITNESS FOR A PARTICULAR PURPOSE. Electronics for Imaging does not warrant that the operation of the software will be uninterrupted or error free or that the Software will meet your specific requirements.

Limitation Of Liability

IN NO EVENT WILL ELECTRONICS FOR IMAGING OR ITS SUPPLIERS BE LIABLE FOR ANY DAMAGES, INCLUDING LOSS OF DATA, LOST PROFITS, COST OF COVER OR OTHER SPECIAL, INCIDENTAL, CONSEQUENTIAL OR INDIRECT DAMAGES ARISING FROM THE USE OF THE SOFTWARE, CODED FONT PROGRAMS OR ACCOMPANYING DOCUMENTATION, HOWEVER CAUSED AND ON ANY THEORY OF LIABILITY. THIS LIMITATION WILL APPLY EVEN IF ELECTRONICS FOR IMAGING OR ANY AUTHORIZED DEALER HAS BEEN ADVISED OF THE POSSIBILITY OF SUCH DAMAGE. YOU ACKNOWLEDGE THAT THE PRICE OF THE UNIT REFLECTS THIS ALLOCATION OF RISK. BECAUSE SOME STATES/JURISDICTIONS DO NOT ALLOW THE EXCLUSION OR LIMITATION OF LIABILITY FOR CONSEQUENTIAL OR INCIDENTAL DAMAGES, THE ABOVE LIMITATION MAY NOT APPLY TO YOU.

Export Controls

You agree that you will not export or re-export the Software or Coded Font Programs in any form without the appropriate United States and foreign government licenses. Your failure to comply with this provision is a material breach of this Agreement.

Government Use

Use, duplication or disclosure of the Software by the United States Government is subject to restrictions as set forth in subdivision (c) (1) (ii) of the Rights in Technical Data and Computer Software clause at DFARS 252.227-7013 or in subparagraphs (c) (1) and (2) of the Commercial Computer Software—Restricted Right Clause at 48 CFR 52.227-19, as applicable.

Third Party Beneficiary

You are hereby notified that Adobe Systems Incorporated, a California corporation located at 345 Park Avenue, San Jose, CA 95110-2704 ("Adobe") is a third-party beneficiary to this Agreement to the extent that this Agreement contains provisions which relate to your use of the Fonts, the Coded Font Programs, the Typefaces and the Trademarks licensed hereby. Such provisions are made expressly for the benefit of Adobe and are enforceable by Adobe in addition to Electronics for Imaging.

General

This Agreement will be governed by the laws of the State of California.

This Agreement is the entire agreement held between us and supersedes any other communications or advertising with respect to the Software, Coded Font Programs and accompanying documentation.

If any provision of this Agreement is held invalid, the remainder of this Agreement shall continue in full force and effect.

If you have any questions concerning this Agreement, please write to Electronics for Imaging, Inc., Attn: Licensing Dept. or see Electronics for Imaging's web site at www.efi.com.

Electronics for Imaging, Inc.
2855 Campus Drive
San Mateo, CA 94403

Contents

Preface

About this manual	ix
About the documentation	ix
How the Fiery XJ works	x
About PostScript printer drivers and PPDs	x
Before you begin	xi

Chapter 1: Printing from Windows Computers

Printing from applications	1-1
Setting options and printing from Windows 95	1-1
Setting options and printing from Windows 3.1x	1-5
Setting options and printing from Windows NT 4.0	1-8
Printing to the parallel port	1-10
Saving files to print at a remote location	1-11
Using Fiery Downloader to print	1-11

Chapter 2: Printing from Mac OS Computers

Printing from applications	2-1
Selecting the Fiery XJ in the Chooser	2-1
Setting print options and printing from Mac OS computers	2-2
Using Fiery Downloader to print	2-5

Chapter 3: Printing from UNIX Workstations

Printing to the Fiery XJ	3-1
--------------------------	-----

Chapter 4: Downloading Files and Fonts

Using Fiery Downloader	4-1
Printing with Fiery Downloader	4-3
Downloading and managing printer fonts	4-7

Chapter 5: Tracking and Managing Print Jobs

Fiery WebTools	5-1
Checking Fiery XJ status with the Status WebTool	5-2
Accessing information with the WebLink WebTool	5-2

Appendix A: Print Options

Where to set print options	A-1
Print option override hierarchy	A-2
More about print options	A-6

Appendix B: Font List

PostScript printer fonts	B-1
Adobe Type 1 fonts	B-1
TrueType fonts	B-5

Appendix C: Troubleshooting

Maintaining optimal system performance	C-1
Troubleshooting	C-2
General printing problems	C-2
Problems with print quality	C-5
Problems with Fiery Downloader	C-6
Problems with Fiery WebTools	C-7

Index

Preface

The Fiery XJ+ 525 Color Server™ enables you to use your color copier as a networked printer. You can use the Fiery XJ™ to print final documents or to proof jobs you will later print on an offset press. You send a print job to the Fiery XJ as you would to any other printer—you select it from the Printers dialog box on Windows computers, or in the Chooser on Mac OS computers—and then print from within any application.

The Fiery XJ+ 525 Color Server includes Command WorkStation™ software, which enables an operator to manage all jobs sent to the Fiery XJ. Although it may not be the case at all sites, the documentation for this product assumes the presence of an operator who controls and manages jobs sent by users from remote workstations.

About this manual

This manual is intended for those remote users who send jobs via the network or via a parallel port connection between the Fiery XJ and a user's workstation. It covers the following topics:

- Printing from a Windows computer
- Printing from a Mac OS computer
- Printing from UNIX
- Downloading files and fonts using Fiery Downloader™
- Specifying and overriding job settings, a list of fonts installed on the Fiery XJ, and troubleshooting information

About the documentation

This manual is part of a set of Fiery XJ documentation that includes the following manuals for users and system administrators:

- The *Configuration Guide* explains basic configuration and administration of the Fiery XJ for the supported platforms and network environments. It also includes guidelines for setting up UNIX, Windows NT, and NetWare servers to provide Adobe PostScript printing services to clients.
- *Getting Started* describes how to install software to enable users to print to the Fiery XJ. Specifically, it describes installation of PostScript printer drivers, printer

description files, and other user software provided on the User Software CD. It also explains how to connect each user to the network.

- The *Printing Guide* describes the printing features of the Fiery XJ for users who send jobs via remote workstations on the network or via a direct parallel port connection.
- The *Color Guide* provides an introduction to the basics of color theory and printing to a Fiery XJ Color Server. It also includes practical color printing tips and application notes that explain how to print to the Fiery XJ from popular Windows and Mac OS applications.
- The *Job Management Guide* explains the functions of the Fiery XJ client utilities, including the Command WorkStation, and how they can be used to manage jobs and maintain color quality. This book is intended for an operator or administrator, or a user with the necessary access privileges, who needs to monitor and manage job flow, perform color calibration, and troubleshoot problems that may arise.
- *Release Notes* provide last-minute product information and workarounds for some of the problems you may encounter.

How the Fiery XJ works

The Fiery XJ receives files from computers on the network, processes (RIPs) those files, and then sends them to the copier's print engine for printing. Even with the Fiery XJ installed, you can still use the copier to make copies.

When printing from an application, your Windows or Mac OS computer communicates with the Fiery XJ by means of a PostScript printer driver and a PostScript printer description file (PPD).

About PostScript printer drivers and PPDs

A PostScript printer driver is an application that manages printing communication between your application software and the printer. It interprets the instructions generated by the application software, merges those instructions with printer-specific PPD options you specify (see below), and translates all that information into PostScript, a language the printer understands. In other words, the printer driver writes a PostScript file based on your original file and the options you set from the Print dialog box.

A PPD file contains information about a particular device's features and capabilities (for example, what paper sizes and media types are supported). The PostScript printer

driver reads the information in the PPD file and presents that information to you in the form of options you can choose from the Print dialog box. The PPD for the Fiery XJ includes information about the features of both the copier and the Fiery XJ Color Server.

For information on the PPD options for your Fiery XJ, see Appendix A, “Print Options.”

Before you begin

Before using the Fiery XJ, follow these steps:

1. Confirm that the system administrator has completed Setup as described in the *Configuration Guide*.
2. Find out what printer defaults the administrator specified in Setup.
These default settings can affect the results of your print jobs. Check with your administrator or operator for information on these default settings.
3. Confirm that the user software is installed correctly on your workstation, as described in *Getting Started*.
4. Consult the *Color Guide* for information on print options and application features that affect color output.
5. Find out how your workstation is configured for printing on the network.
If your site has an operator who controls all printing, you may have access to the Hold queue only. In this case, all jobs you send are spooled to the Fiery XJ and held until the operator sends them to their next stage of processing.
You may also have access to the Print queue. If you send jobs to this queue, jobs spool to the Fiery XJ and proceed to RIP and print according to your job settings—unless someone (you, or an operator, for example) intervenes.
Lastly, you may have access to the Direct connection, which sends jobs straight to the server without spooling.
6. Find out whether the Fiery XJ is set up to use Fiery WebTools and what your access privileges are.
The administrator may or may not have enabled access to the server via the Internet (or an intranet). If access is enabled, a password may be required to perform job management with Fiery WebSpooler.

Chapter 1: Printing from Windows Computers

This chapter describes how to print to the Fiery XJ from Windows 95, Windows 3.1x, and Windows NT 4.0.

You can print from a networked Windows computer, or from a Windows computer connected to the parallel port on the Fiery XJ. If you plan to print files at another location, you should follow the procedures described in “Saving files to print at a remote location” on page 1-11.

Another way to print from a Windows computer is to download PostScript, Encapsulated PostScript (EPS), or Portable Document Format (PDF) files using Fiery Downloader.

NOTE: For information on setting up the Windows environment for printing with Windows servers connected to the Fiery XJ, see the *Configuration Guide*. For information on how to connect to the Fiery XJ over the network, install printer drivers, and install the Fiery utilities, see *Getting Started*.

Printing from applications

Once you have installed the Fiery XJ printer driver and set it to the proper port as described in *Getting Started*, you can print directly from most Windows applications. Simply choose the Print command from within your application.

To achieve the best printing results from specific applications, see the *Color Guide*.

Setting options and printing from Windows 95

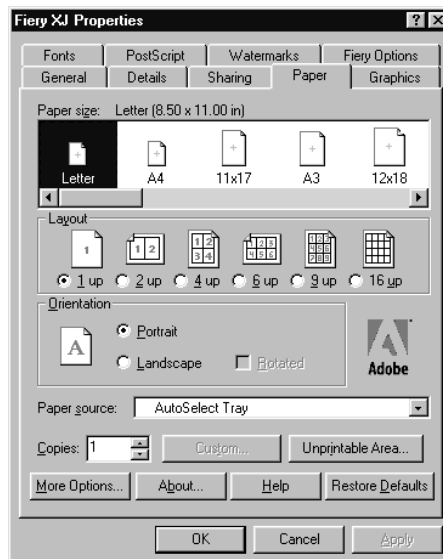
To print from Windows 95, use the Adobe PostScript printer driver for Windows 95. The driver is included with the Fiery XJ user software, and uses all features of the Fiery XJ.

Once you have installed the Adobe PostScript printer driver and Fiery XJ PostScript Printer Description file (PPD), you can specify print settings. You can also change settings for a particular job when you print it to the Fiery XJ. Before printing, make sure that the correct print options are set.

To print from Windows 95 applications over a network, you must be connected to a print server. This can be a Novell NetWare server, an NT server, or a UNIX server. For information about connecting a server to the Fiery XJ, see the *Configuration Guide*. Or you can print from Windows 95 without connecting to a print server via SMB printing. For information about setting up SMB printing, see *Getting Started*.

TO SET PRINT OPTIONS AND PRINT WITH THE ADOBEPS PRINTER DRIVER FROM WINDOWS 95:

1. Double-click the My Computer icon.
2. Double-click the Printers icon.
3. Select the icon for the Fiery XJ and choose Properties from the File menu.
4. Click the Paper tab.
5. Specify the appropriate settings for the print job.



In the Paper size area, specify the page size for the job.

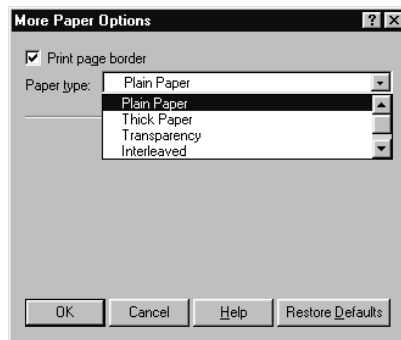
From the Paper source pop-up menu, choose the paper tray for the job. For example, you can specify that the job should be printed on pages in the Bypass tray. The Paper source selection is valid for the current job only.

1

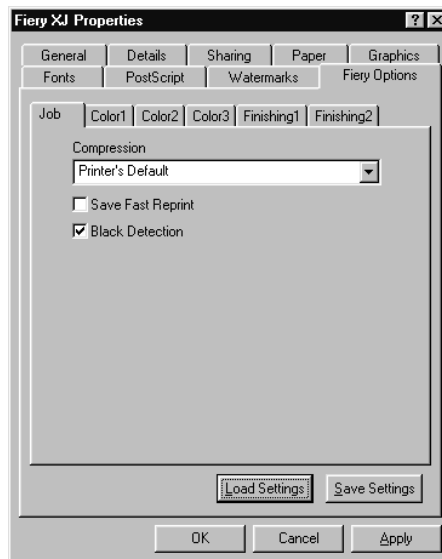
1-3 Printing from applications

NOTE: If paper loaded in the selected tray is a different size, orientation, and/or media type than that of the job you are sending, the Fiery XJ displays an error message and the job will not print. You should then load the correct paper in the selected tray or cancel the job.

6. To select a specific media type, click More Options.
7. From the Paper type pop-up menu, choose the type of media to use for the job and click OK.



8. Click the Fiery Options tab.

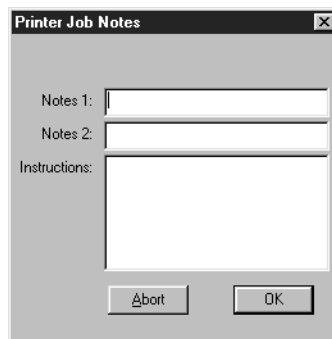


9. Go to the Job, Color1, Color2, Color3, Finishing1, and Finishing2 tabs, and specify the appropriate settings for the print job.

These print options are specific to the Fiery XJ. They override settings in Fiery XJ Printer Setup; the settings can also be changed in the Properties dialog box with the Command WorkStation, or in the Override Print Settings dialog box with Fiery WebSpooler. For information about these options and overrides, see Appendix A, “Print Options.”

If you choose Printer’s default, the Fiery XJ prints with the default setting entered during Setup.

10. If you want to make the new settings the default settings, click Apply.
11. Click OK.
12. From your application, choose Print.



13. Enter text messages in the Notes 1 and Notes 2 areas.

Enter user and job identification information for accounting purposes, or whatever information is required at your site. These notes will appear in the Job Log.

14. Click OK.

NOTE: The Fiery XJ does not support printing the Cover Page from the AdobePS printer driver.

Saving and loading print option settings

Print option settings can be saved to a settings file on your hard disk. Saving a settings file enables you to easily load specifically configured settings for a particular job.

TO SAVE PRINT OPTION SETTINGS:

1. After configuring the options from the Job, Color1, Color2, Color3, Finishing1, and Finishing2 tabs, click Save Settings.
2. Name the settings file and browse to a location on your hard disk where you want to save the file.
3. Click OK.

The settings file is saved to the location you specified.

TO LOAD PRINT OPTION SETTINGS:

1. From the Fiery Options tab, click Load Settings.
2. Browse to the settings file.
3. Select the settings file from the list and click OK.

The options from the Job, Color1, Color2, Color3, Finishing1, and Finishing2 tabs are automatically configured with the saved settings.

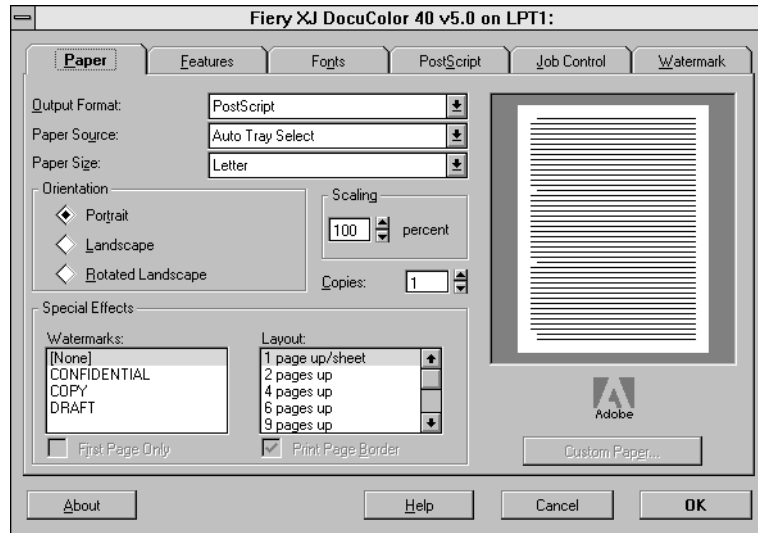
Setting options and printing from Windows 3.1x

To print from Windows 3.1x, use the Adobe PostScript printer driver for Windows 3.1x. The driver is included with the Fiery XJ user software, and uses all features of the Fiery XJ.

Once you have installed the Adobe PostScript printer driver and Fiery XJ PostScript Printer Description file (PPD), you can specify print settings. You can also change settings for a particular job when you print it to the Fiery XJ. Before printing, make sure that the correct print options are set.

TO SET PRINT OPTIONS AND PRINT WITH THE ADOBEPS PRINTER DRIVER FROM WINDOWS 3.1X:

1. In the Main window, double-click the Control Panel icon.
2. Double-click the Printers icon.
3. In the Printers dialog box, select the Fiery XJ in the Installed Printers box and click the Setup button.
4. Click the Paper tab.
5. Specify the appropriate settings for the print job.

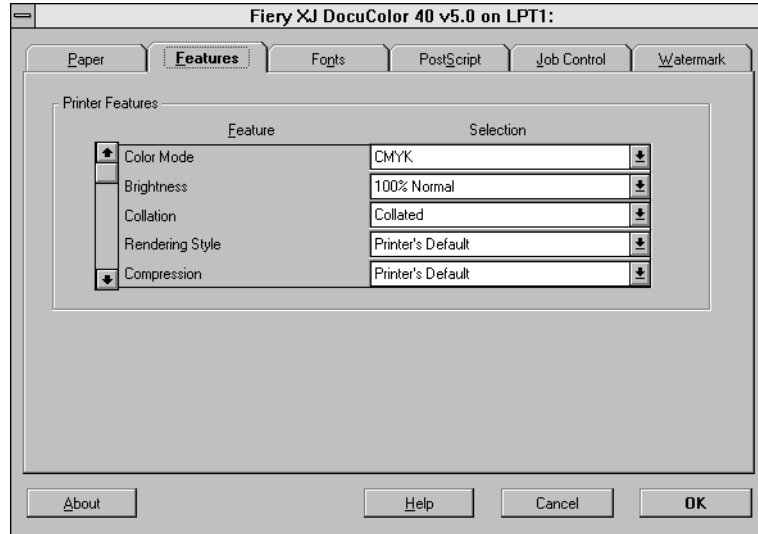


From the Paper Source pop-up menu, choose the paper tray for the job. For example, you can specify that the job should be printed on pages in the Bypass tray. The Paper Source selection is valid for the current job only.

In the Paper Size pop-up menu, specify the page size for the job.

NOTE: If paper loaded in the selected tray is a different size, orientation, and/or media type than that of the job you are sending, the Fiery XJ displays an error message and the job will not print. You should then load the correct paper in the selected tray or cancel the job.

6. Click the Features tab.

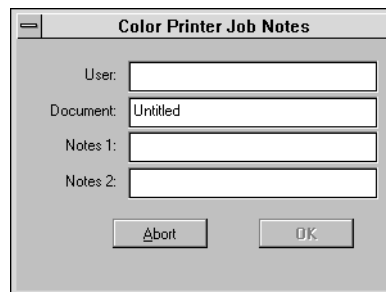


7. Specify the appropriate settings for the job and click OK.

These print options are specific to the Fiery XJ (you may need to scroll to see all the pop-up menus). They override settings in Fiery XJ Printer Setup; the settings can also be changed in the Properties dialog box with the Command WorkStation, or in the Override Print Settings dialog box with Fiery WebSpooler. For information about these options and overrides, see Appendix A, "Print Options."

If you choose Printer's default, the Fiery XJ prints with the default setting entered during Setup.

8. Choose Print in your application.



9. If necessary, enter your name in the User area.

Once you enter your name in the User area, it appears automatically in this dialog box when you print subsequent jobs.

NOTE: This entry *cannot* be changed without deleting and reinstalling the printer.

10. Enter text messages in the Notes 1 and Notes 2 areas.

Enter user and job identification information for accounting purposes, or whatever information is required at your site. These notes will appear in the Job Log.

11. Click OK.

NOTE: The Fiery XJ does not support printing the Cover Page from the AdobePS printer driver.

Setting options and printing from Windows NT 4.0

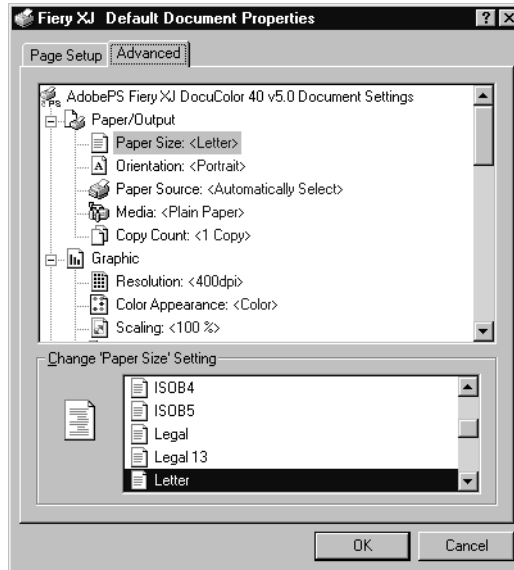
You can print from Windows NT 4.0 using the Adobe PostScript printer driver included on the User Software CD.

Once you have installed the Adobe PostScript printer driver and Fiery XJ PostScript Printer Description file (PPD), you can specify print settings. You can also change settings for a particular job when you print it to the Fiery XJ. Before printing, make sure that the correct print options are set.

TO SET PRINT OPTIONS AND PRINT WITH THE ADOBE POSTSCRIPT PRINTER DRIVER FOR WINDOWS NT 4.0:

1. Choose Print in your application and click Properties.
2. Click the Advanced tab.

3. Specify the appropriate settings for the print job.

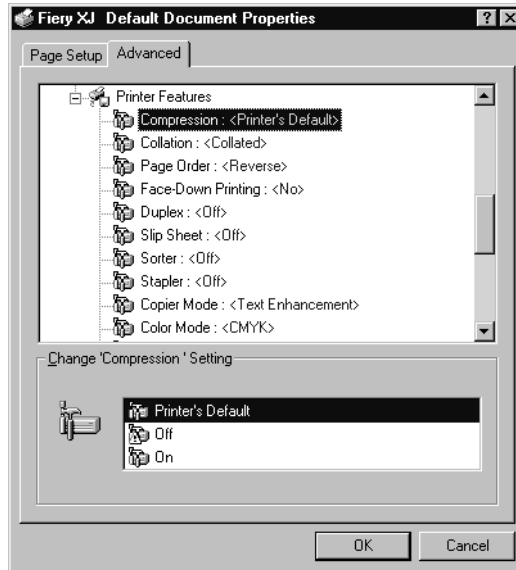


In the Paper Size menu, specify the page size for the job.

From the Paper Source menu, choose the paper tray for the job. For example, you can specify that the job should be printed on pages in the Bypass tray. The Paper Source selection is valid for the current job only.

NOTE: If paper loaded in the selected tray is a different size, orientation, and/or media type than that of the job you are sending, the Fiery XJ displays an error message and the job will not print. You should then load the correct paper in the selected tray or cancel the job.

4. Scroll down to Printer Features, and select the appropriate settings for the print job.



These print options are specific to the Fiery XJ. They override settings in Fiery XJ Printer Setup; the settings can also be changed in the Properties dialog box with the Command WorkStation, or in the Override Print Settings dialog box with Fiery WebSpooler. For information about these options and overrides, see Appendix A, “Print Options.”

If you choose Printer's default, the Fiery XJ prints with the default setting entered during Setup.

5. Click OK, then click OK in the Print dialog box.

NOTE: The Fiery XJ does not support printing the Cover Page from the Adobe PostScript printer driver.

Printing to the parallel port

The Fiery XJ has a parallel port that enables you to print most files directly from a Windows computer if your network administrator has connected the Windows computer's parallel port to the Fiery XJ parallel port.

NOTE: You cannot use Fiery Downloader through the parallel port.

TO PRINT FILES TO THE PARALLEL PORT:

1. **Make sure the parallel port is enabled on the Fiery XJ.**
Check with your site administrator or operator to see whether printing to the parallel port is enabled. See *Getting Started* for information on setting up parallel port printing on your Windows computer.
2. **Select the printer port that is connected to the Fiery XJ parallel port.**
Select one of the local ports: LPT1, LPT2, or LPT3. For instructions, see your Windows documentation.
3. **Print from within your application.**

Saving files to print at a remote location

If you do not have a Fiery XJ and are preparing files to take to a service bureau or other location, print the final files to the File port (as opposed to one of the local ports). You can also print to the File port to create a file to be downloaded using Fiery Downloader. For instructions, see your Windows documentation.

Using Fiery Downloader to print

Downloading files with Fiery Downloader is generally faster than printing from application software. You can use Fiery Downloader to print PostScript, EPS, or PDF files.

TO PRINT USING FIERY DOWNLOADER:

1. **Create a PostScript, EPS, or PDF file. Specify the appropriate print options and include (embed) any necessary fonts that are not resident on the Fiery XJ.**
For a list of fonts resident on the Fiery XJ, see Appendix B, “Font List.”
2. **Launch Fiery Downloader and connect to the Fiery XJ.**
For instructions on setting up Fiery Downloader, see *Getting Started*.
3. **Select the file(s) you want to download, and specify any necessary options.**
4. **Click Download.**
For details, see Chapter 4, “Downloading Files and Fonts.”

Chapter 2: Printing from Mac OS Computers

You can print to the Fiery XJ just as you would print to any other printer from any application software. First, select the Fiery XJ as the current printer in the Chooser, and then print the file from within your application.

Another way to print from a Mac OS computer is to download PostScript, Encapsulated PostScript (EPS), or Portable Document Format (PDF) files using Fiery Downloader.

Printing from applications

Before you can print to the Fiery XJ from applications, you must select the Fiery XJ in the Chooser. Then, using the Adobe PostScript printer driver and the correct PostScript Printer Description file (PPD), you can control many Fiery XJ printing features by specifying job settings from print dialog boxes.

For information on achieving the best printing results from specific applications, see the *Color Guide*.

Selecting the Fiery XJ in the Chooser

Before you print a job, make sure the Fiery XJ is the currently selected printer.

TO SELECT THE FIERY XJ AS THE CURRENT PRINTER:

1. Make sure the Fiery XJ is connected to the network and turned on.
2. Choose Chooser from the Apple menu.
3. Click the AdobePS icon to select it.
4. If the network is divided into zones, select the zone in which the Fiery XJ is located.

5. Select the Fiery XJ by <Server Name>_<Device Name>_<Queue Name> from the “Select a PostScript Printer” list.

The names of all supported printers in the zone appear in the scroll list on the right. For information about setting up the Fiery XJ in the Chooser, see *Getting Started*.

NOTE: If your system administrator has not enabled the connection to the Print queue or the Direct connection, the corresponding name will *not* appear in this list. For example, if your site has an operator who controls the flow of print jobs from the Command WorkStation, you may be able to print only to the Hold queue.

6. Make sure that AppleTalk is set to Active, and then close the Chooser window.

The Fiery XJ remains selected as the current printer until you choose a new printer in the Chooser.

Setting print options and printing from Mac OS computers

In Mac OS applications, print options are set from both the Page Setup dialog box and the Print dialog box. For details, see Appendix A, “Print Options.”

NOTE: Some default print options are set by the administrator during Setup. Check with the administrator or the operator for information on the current server default settings.

TO SET PRINT OPTIONS AND PRINT WITH THE ADOBEPS PRINTER DRIVER:

1. Open the file you want to print, and choose Page Setup from the application’s File menu.

The PSPrinter Page Setup dialog box appears.

2. In the Paper pop-up menu, specify the page size for the job and click OK.

3. Choose Print from the application's File menu.

The screenshot shows a print dialog box with the following elements:

- Printer: HJ 5.0B2_DocuColor_Print
- Destination: Printer
- Version: 8.5.1
- Tab: General
- Copies: 1
- Pages: All, From: [] To: []
- Paper Source: All pages from: Auto Select, First page from: Auto Select, Remaining from: Auto Select
- Buttons: Save Settings, Cancel, Print
- Adobe logo

NOTE: Print dialog boxes vary across applications.

If the Print dialog box lets you select from a pop-up menu of available printers, choose the Fiery XJ.

From the Paper Source pop-up menu, choose the paper tray for the job. For example, you can specify that the job should be printed on pages in the Bypass tray. The Paper Source selection is valid for the current job only.

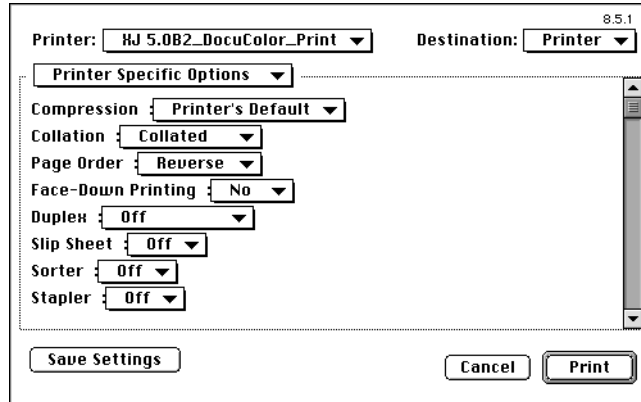
NOTE: If paper loaded in the selected tray is a different size, orientation, and/or media type than that of the job you are sending, the Fiery XJ displays an error message and the job will not print. You should then load the correct paper in the selected tray or cancel the job.

4. From the General pop-up menu, choose Job Notes.

In the Notes 1 and Notes 2 areas, enter user and job identification information for accounting purposes, or whatever information is required at your site. These notes will appear in the Job Log.

5. From the Job Notes pop-up menu, choose Printer Specific Options.

- Specify the appropriate settings for the print job.



These print options are specific to the Fierix XJ (you may need to scroll to see all the options). They override settings in Fierix XJ Printer Setup; the settings can also be changed in the Properties dialog box with the Command WorkStation, or in the Override Print Settings dialog box with Fierix WebSpooler. For information about these options and overrides, see Appendix A, “Print Options.”

If you choose Printer’s default, the Fierix XJ prints with the default setting entered during Setup.

Some PPD options are ones that could also be set from an application (for example, Reverse Order printing or Collation). In these cases, use the PPD option to perform the function, rather than setting it from the application. The application may not set up the file properly for printing on the Fierix XJ and may also take longer to process.

- If you want to make the new settings the default settings, click Save Settings.
- Click Print.

NOTE: The Fierix XJ does not support printing the Cover Page from the AdobePS printer driver.

Using Fiery Downloader to print

Downloading files with Fiery Downloader is generally faster than printing from application software. You can use Fiery Downloader to print PostScript, EPS, or PDF files.

TO PRINT USING FIERY DOWNLOADER:

1. Create a PostScript, EPS, or PDF file. Specify the appropriate print options and include (embed) any necessary fonts that are not resident on the Fiery XJ.
For a list of fonts resident on the Fiery XJ, see Appendix B, “Font List.”
2. Launch Fiery Downloader and connect to the Fiery XJ.
For instructions on setting up Fiery Downloader, see *Getting Started*.
3. Select the file(s) you want to download, and specify any necessary options.
4. Click Download.

For details, see Chapter 4, “Downloading Files and Fonts.”

Chapter 3: Printing from UNIX Workstations

You can print to the Fiery XJ directly from UNIX workstations. Jobs printed to the Fiery XJ are sent to the Print or Hold queue and can be manipulated from the Command WorkStation or from Windows or Mac OS computers on the network using Fiery WebSpooler.

NOTE: If you print to the Hold queue, an operator must intervene at the Command WorkStation or from Fiery WebSpooler for the job to print; jobs sent to the Hold queue are spooled to disk and held.

The queue name and Fiery XJ printer name are determined by your system administrator. Contact your system administrator for the names of your queues.

For information about setting up printing from TCP/IP, see your UNIX system documentation.

Printing to the Fiery XJ

You can use UNIX commands to print PostScript and text files to the Fiery XJ. In general, use basic print commands (`lpr`, `lpq`, `lprm`) to send print jobs to a Fiery XJ. See UNIX manual pages or other documentation for information about UNIX commands.

NOTE: Only PostScript or text files can be printed from UNIX.

TO PRINT FROM UNIX:

- On a system running SunOS 4.1.x or another BSD-based variant, use the `lpr` command to send a job to the Fiery XJ as follows:

```
lpr <-Pprinter> <-#copies> <filename>
```

For example, if the Print queue of your Fiery XJ is named `print_Server`, your file is named `Sample`, and you want to print two copies, type:

```
lpr -Pprint_Server -#2 Sample
```

- On a system running Solaris 2.x or any System V implementation of UNIX, use the `lp` command to send a job to the Fiery XJ as follows:

```
lp -d <printrname> {-n <#copies>} <filename>
```

For example, if the Print queue of your Fiery XJ is named `print_Server`, your file is named `Sample`, and you want to print two copies, type:

```
lp -d print_Server -n 2 Sample
```

TO DISPLAY A LIST OF JOBS IN THE QUEUE:

- On a system running SunOS 4.1.x or another BSD-based variant, use the `lpq` command to see printer jobs in the queue as follows:

```
lpq <-Pprinter>
```

For example, if the Print queue of your Fiery XJ is named `print_Server`, type:

```
lpq -Pprint_Server
```

Your workstation displays the contents of the queue.

- On a system running Solaris 2.x or any System V implementation of UNIX, use the `lpstat` command to see printer jobs in the queue as follows:

```
lpstat -o <printrname>
```

For example, if the Print queue of your Fiery XJ is named `print_Server`, type:

```
lpstat -o print_Server
```

Your workstation displays the contents of the queue.

TO REMOVE JOBS FROM THE QUEUE:

NOTE: Unless you log in as the root user, you can remove only your own jobs.

- On a system running SunOS 4.1.x or another BSD-based variant, use the `lprm` command to remove jobs from the queue as follows.

```
lprm <-Pprinter> <job #...>
```

You can use the `lpq` command to check the job number.

For example, to remove job number 123 from the Print queue of your Fiery XJ named `print_Server`, type:

```
lprm -Pprint_Server 123
```

The `lprm` command reports the names of any files it removes.

- On a system running Solaris 2.x or any System V implementation of UNIX, use the `cancel` command to remove jobs from the queue.

```
cancel <printername> <job ID>
```

For example, to remove job number 123 from the Print queue of your Fiery XJ named `print_Server`, type:

```
cancel print_Server 123
```


Chapter 4: Downloading Files and Fonts

Fiery Downloader allows you to send PostScript, Encapsulated PostScript (EPS), and Portable Document Format (PDF) files directly to the Fiery XJ without using the application they were created in. It also enables you to manage printer fonts on the Fiery XJ.

You can use Fiery Downloader from a remote workstation as well as from the Command WorkStation. Fiery Downloader requires a network connection—you *cannot* use Fiery Downloader with the parallel port. For information on supported networking protocols, see *Getting Started*.

NOTE: The Windows and Mac OS versions of Fiery Downloader are fundamentally the same; differences are noted. Single windows or dialog boxes illustrated depict the Windows version.

Using Fiery Downloader

You can use Fiery Downloader to:

- Print PostScript, EPS, and PDF files to the Fiery XJ
- Check the status of the Fiery XJ
- Manage the PostScript printer fonts stored on the Fiery XJ hard disk (this feature requires that the Direct connection is published on the Fiery XJ)

NOTE: Fiery Downloader was designed specifically for the Fiery XJ; you cannot use it with any other printer. You can also use standard LaserWriter downloaders, such as the Adobe Font Downloader, with the Fiery XJ.

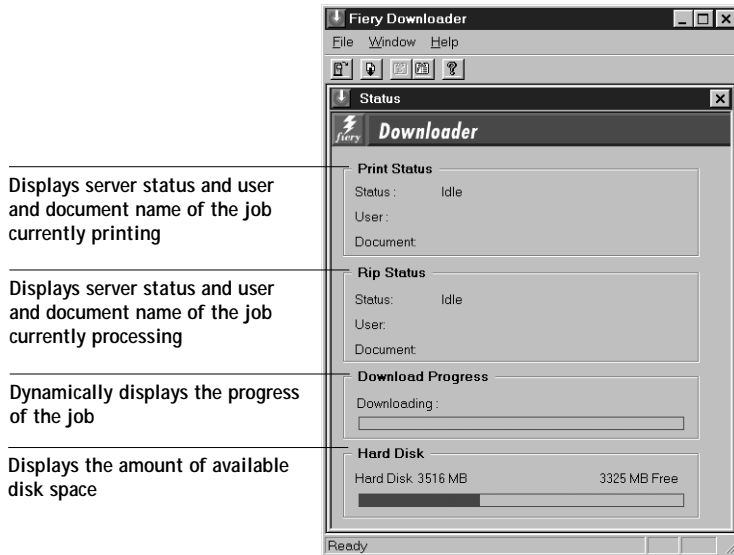
TO VIEW INFORMATION WITH FIERY DOWNLOADER:

1. Double-click the Fiery Downloader icon or choose Fiery Downloader from the Start>Programs menu.
2. Select the Fiery XJ in the Chooser window and click OK (Windows) or Connect (Mac OS).

4

4-2 Downloading Files and Fonts

The Fiery Downloader Status window appears and you see the Fiery Downloader Toolbar, menus, and the status bar at the bottom of the screen.



Buttons for some menu functions appear in the Toolbar at the top of the window.



Open

Click to connect to a different Fiery XJ.



Download

Click to download a file or font to the Fiery XJ.



Status

If you are viewing the font list, click to display the status window for the current Fiery XJ.



Font list

If you are viewing the status window, click to display a list of printer fonts on the Fiery XJ hard disk.



About Fiery
Downloader
(Windows only)

Click to view version information about Fiery Downloader.

You can click the font list button or choose Font List from the File menu to view font information in the window.

3. To select a different Fiery XJ, choose Open from the File menu or click the Open button.
4. Select the Fiery XJ in the dialog box that appears, and click OK (Windows) or Connect (Mac OS).
5. To close the status window, choose Close from the File menu; to quit Fiery Downloader, choose Exit (Windows) or Quit (Mac OS) from the File menu.

Printing with Fiery Downloader

Printing files Fiery Downloader is fast—generally faster than printing from within applications. If you regularly print large files, be sure to try printing with Fiery Downloader.

TO DOWNLOAD A FILE OR FONT WITH FIERY DOWNLOADER:

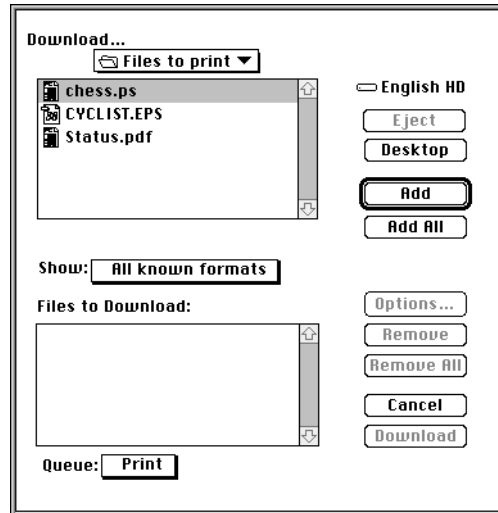
1. Use your application to generate a file.

You can save a PostScript or PDF file by selecting the appropriate option in the application's Print dialog box. With some applications, you can also save EPS files.

If you experience problems printing EPS files with Fiery Downloader, you can print the file directly from the application in which you created it.

2. Launch Fiery Downloader.
3. Choose Download from the File menu or click the Download button.





4. Choose the file type to display from the Files of type (Windows) or Show (Mac OS) menu.

You can leave this at the default All Known Formats or choose All Files. All Known Formats lists all files in formats supported by Fiery Downloader.

You can download files and fonts in the same batch. If the fonts are used by files in the same batch, the fonts should be downloaded first.

To download fonts, you must use the Direct connection (make sure that the Direct connection is published on the Fiery XJ). If you do not have access to the Direct connection, you must embed any special fonts used by the file in the file when you generate it.

5. Choose the Connection Type (Windows) or Queue (Mac OS) to which you will download the files.

The options available to you in this menu depend on the setup at your site. The potential selections are Print Queue (Windows) or Print (Mac OS), Hold Queue (Windows) or Hold (Mac OS), and Direct Connection (Windows) or Direct (Mac OS). If your administrator has not enabled one or more of these connections, you cannot select it.

4

4-5 Using Fiery Downloader

PDF files cannot be printed with the Direct connection. If you choose the Direct connection, the job is spooled to the Print queue and then printed. If the Print queue is not enabled, the job is spooled to the Hold queue and must be released for printing by the operator.

6. Select the filename and click Add File(s) (Windows) or Add (Mac OS).

The File name field (Windows) displays the name of the selected file before you click Add.

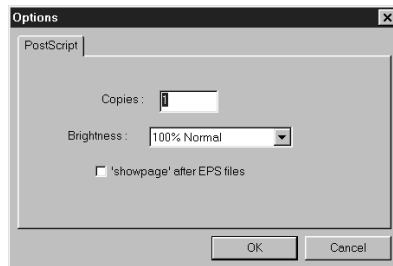
You can navigate to different drives and directories to select files to download. Click Add All (Mac OS) to add all files in a folder.

To select multiple sequential files, select the first file and then Shift-click the last file. Control-click to select multiple non-sequential files.

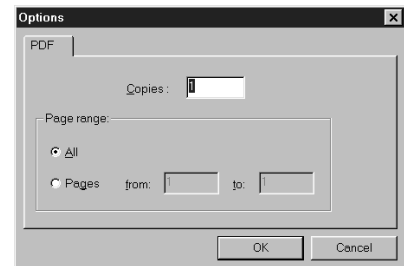
If you change your mind about a file, select the filename in the Files to Download list and click Remove File(s) (Windows) or Remove (Mac OS).

Click Remove All (Mac OS) to remove all files from the Files to Download list.

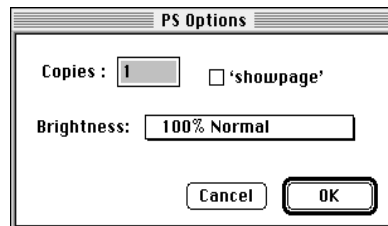
7. To change the attributes of a file to be downloaded, select it and click Options.



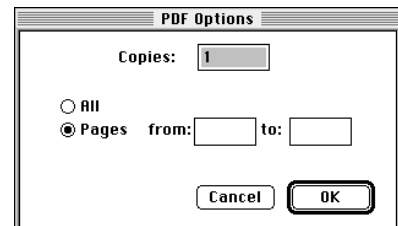
PostScript Options dialog box (Windows)



PDF Options dialog box (Windows)



PostScript Options dialog box (Mac OS)



PDF Options dialog box (Mac OS)

8. Specify the following information in the dialog box and click OK.

The options you set apply only to the selected file. You can set different options, or leave the default settings, for each file.

Copies—Specify the number of copies.

Brightness (PostScript and EPS files only)—Change the Brightness setting if a file appears to be too dark or too light. Choose 85% for a substantially lighter image, 115% for a substantially darker image, or one of the options in between.

NOTE: Some applications, including Adobe Photoshop, provide transfer functions that let you specify density settings for an image. If the file you are printing includes transfer functions, the Fiery Downloader Brightness option has no effect. For more information on using transfer functions, see the documentation for your application.

'showpage' after EPS files (Windows) or 'showpage' (Mac OS) (PostScript and EPS files only)—In most cases, you do not need to use this option. Select the 'showpage' option only if an EPS file fails to print without it. This option adds a 'showpage' PostScript language command at the end of the print job. Some applications omit this necessary PostScript language command when they generate EPS files. Select this option when printing EPS files generated by these applications. If you select this option unnecessarily, extra blank pages may print.

If you experience problems printing EPS files with Fiery Downloader, you can print the file directly from the application in which you created it.

Page range (PDF files only)—Specify the page range you want to print.

9. Click **Download File(s)** (Windows) or **Download** (Mac OS).
10. To cancel downloading, press **Escape** (Windows) or **Command-.** (Mac OS).

Downloading and managing printer fonts

The Fiery XJ includes 136 PostScript fonts; for a complete list, see Appendix B “Font List.” In addition, two Adobe Multiple Master fonts are included and are used for font substitution in PDF files.

NOTE: The Direct connection must be published on the Fiery XJ in order to download and manage fonts, and to view the font list.

Before downloading a file that uses fonts not resident on the Fiery XJ, you must download the fonts (unless the fonts are embedded in the file). To see what fonts are resident on the Fiery XJ, choose Font List from the File menu or click the Font List button (see page 4-9).

You can download fonts only via the Direct connection. If you do not have access to the Direct connection, you must embed any special fonts used by the file in the file when you generate it.

The screen fonts that correspond to the printer fonts installed on the Fiery XJ are not automatically installed on your Windows system.

NOTE: You cannot use Fiery Downloader to download TrueType fonts. If you use TrueType fonts in Windows, you can print them by converting them to Adobe Type 1 fonts. To do this with the Adobe PS printer driver, click the Fonts tab and set up the Font Substitution Table as necessary.

Printer fonts and Mac OS screen fonts

Like all PostScript fonts, the fonts included with the Fiery XJ come in two forms: printer fonts and screen fonts. The printer fonts are installed permanently on the Fiery XJ hard disk. The screen fonts, which are included with the Fiery XJ user software, should be installed on your Mac OS computer. If you are using these fonts in documents you print on a LaserWriter, they are probably already installed. If not, you will need to install them yourself. For instructions, see *Getting Started*.

Occasionally, you may want to use Adobe Type 1 (Windows) or PostScript (Mac OS) fonts that are not included with the Fiery XJ. If so, you will need to install both the screen fonts and the printer fonts on your computer. To do this, follow the instructions from the font manufacturer.

Downloading printer fonts to the Fiery XJ

In general, each time you print from within a Mac OS application, the application automatically downloads any fonts used in your document that are not already installed on the Fiery XJ, as long as the printer fonts are installed in your System Folder. These fonts remain in the Fiery XJ only until your document has printed. If you print the same document again, your application must download the fonts again.

If you regularly use one or more fonts from Windows or Mac OS applications that are not already installed in the Fiery XJ, you can save time by downloading them to the Fiery XJ hard disk with Fiery Downloader. Fonts you download to the Fiery XJ hard disk remain installed until you remove them using Fiery Downloader, no matter how many times the Fiery XJ is turned off and on. You'll probably want to download fonts you use on a regular basis to the Fiery XJ hard disk.

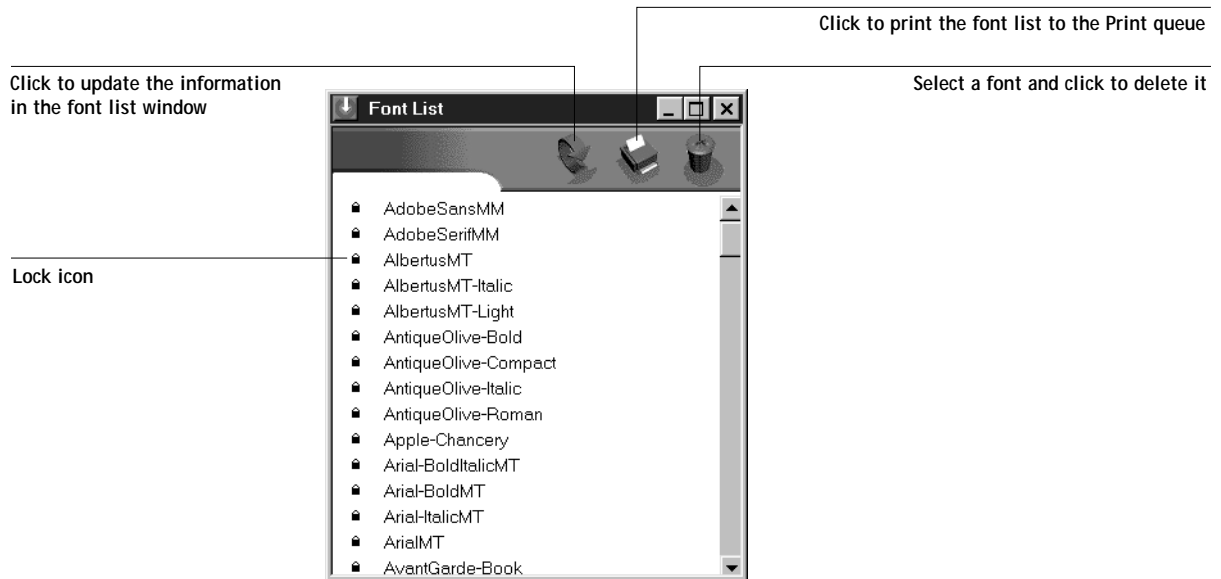
Before you download PostScript or EPS files with Fiery Downloader, make sure that all fonts included in your file are installed on the Fiery XJ or embedded in your file; otherwise the text in these fonts will not print correctly and may not print at all. For PDF files, font substitution occurs automatically for fonts not installed on the Fiery XJ. Two multiple master fonts (a serif font and a sans serif font) stored on the Fiery XJ are used exclusively for substitution with PDF files.

4

TO VIEW FONT INFORMATION, UPDATE, PRINT, AND DELETE FONTS:

- Choose Font List from the File menu or click the Font List button.

The Font List window appears with Update, Print, and Delete buttons in the title bar. The printer fonts included with the Fiery XJ (resident fonts) are locked. Locked fonts appear with a lock icon next to the name and cannot be deleted.



Chapter 5: Tracking and Managing Print Jobs

Fiery XJ user software includes a variety of tools that allow you to track and manage print jobs. The particular tools, and the access privileges for them, that are available to you depend on the conditions implemented by your site administrator.

The Command WorkStation and Fiery WebSpooler provide the capability to view and control the flow of print jobs to the Fiery XJ. If the administrator has set Administrator and Operator passwords in Setup, you need one of these passwords to perform most Command WorkStation and Fiery WebSpooler functions. For information on these tools and the access privileges needed to use them, see the *Job Management Guide*.

The Status WebTool does not require any special access privileges. If the administrator has enabled Web Services in Setup and has provided you with the IP address of the Fiery XJ, you can use the Status WebTool to monitor the status of print jobs as they are rasterized and printed.

Fiery WebTools

Fiery WebTools reside on the Fiery XJ but can be accessed over the network from a variety of platforms. The Fiery XJ has a home page that lets remote users view server functions and manipulate jobs. For an overview of the Fiery WebTools and information on how to access them, see the *Job Management Guide*. This chapter describes only the Status WebTool and WebLink.

TO ACCESS THE FIERY WEBTOOLS:

1. Start up your Internet browser application.
See *Getting Started* for information about supported platforms and browsers.
2. Enter the IP address or the DNS name of the Fiery XJ.
Check with the operator or administrator for this information.
3. When the Fiery XJ home page appears, click to select one of the Fiery WebTools.
Move the cursor over the buttons to display information about the selections.

Checking Fiery XJ status with the Status WebTool

You can use the Status WebTool to see what jobs are currently processing and printing. To access the Status WebTool, point your browser to the Fiery XJ home page and click the Status button. The current RIP Status and Printer Status appear in the window.



To open a new browser window for the Status display, click Float. You can then close other browser windows and leave the Status window open to continue checking the status of the Fiery XJ. As long as you keep the Status window open, it is dynamically updated.

To obtain more information about the status of jobs, use Fiery WebSpooler or the Command WorkStation. For information about them, see the *Job Management Guide*.

Accessing information with the WebLink WebTool

The WebLink button on the Fiery XJ home page provides a link to another web page or to multiple web pages, provided you have a valid Internet connection. The administrator at your site can set the WebLink destination. Check your Fiery XJ WebLink for any information available there.

Appendix A: Print Options

Print options give you access to all the special features of your copier and Fiery XJ. Print options can be specified in several places—in Fiery XJ Setup, from the printing application, from Fiery Downloader, from the Command WorkStation, or from Fiery WebSpooler. The table in this appendix briefly describes each print option, gives its default setting, and provides information on any constraints or requirements in effect.

Where to set print options

- Some settings are specified during Setup by the administrator. For information on the current default server settings, check with the administrator or the operator.
- From applications

With the Adobe PostScript printer drivers (included in your user software), you can specify and override job settings when you print a job. See Chapter 1, “Printing from Windows Computers” and Chapter 2, “Printing from Mac OS Computers” for information about specifying job settings from applications.
- From Fiery Downloader

Only a few settings—Page Range (for PDF files only), Copies, and Brightness—can be specified when printing jobs with Fiery Downloader. To change options in Fiery Downloader, select a job in the Files to be Downloaded (Windows) or Files to Download (Mac OS) list and click Options. For more information, see Chapter 4, “Downloading Files and Fonts”.
- Overrides from the Command WorkStation and from Fiery WebSpooler

To change job settings from the Command WorkStation, double-click a job to display the Properties dialog box. To change job settings from Fiery WebSpooler, double-click a job to display the Override Print Settings dialog box. For more information, see the *Job Management Guide*.

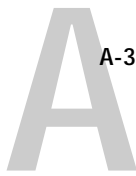
Print option override hierarchy

In the following table, underlined settings in the “Option and settings” column indicate default printer driver settings (PPD defaults). If no setting is underlined, a default setting for this option has been specified in Fiery XJ Setup. To find out about the current Setup defaults, print the Configuration page from the Command WorkStation or from the Fiery XJ Control Panel.

The override hierarchy is as follows:

- A user’s printer driver settings override the Fiery XJ Setup settings.
- Settings made from the Command WorkStation or Fiery WebSpooler override the user’s printer driver settings.

Option and settings: (Default setting is underlined)	Description:	Requirements, constraints, and information:
Black Detection <u>Off/On</u>	Select Off if your job consists of black-only text pages combined with a significant number of color pages. Select On if you are printing a predominantly black and white job.	For more information, see page A-9 and the <i>Color Guide</i> .
Brightness <u>85% Lightest/90% Lighter/95% Light/100% Normal/105% Dark/110% Darker/115% Darkest</u>	Select 85% for a substantially lighter image, 115% for a substantially darker image, or one of the settings in between.	
CMYK Simulation <u>SWOP-Coated/DIC/Euroscale/Custom-1/Custom-2/Custom-3/Custom-4/Custom-5/None</u>	Specify the simulation goal to be used for the current print job.	The default setting for printing reflects the CMYK Simulation setting specified in Fiery XJ Color Setup. For more information, see page A-6 and the <i>Color Guide</i> .
CMYK Simulation Method <u>Quick/Full</u>	Select Quick to utilize one-dimensional transfer curves to adjust density output of individual color channels. Select Full to utilize four-dimensional transfer curves, which adjust for hue as well as density of individual color channels.	The default setting for printing reflects the CMYK Simulation setting specified in Fiery XJ Color Setup. For more information, see the <i>Color Guide</i> .



Option and settings: (Default setting is underlined)	Description:	Requirements, constraints, and information:
Collation <u>Collated</u> /Uncollated	Specify how to output multiple-page/multiple-copy jobs.	
Color Mode CMYK/Grayscale	Specify the color mode for the current print job. Select CMYK for a full-color document. Select Grayscale for a grayscale or black-and-white document.	The default setting for printing reflects the Color Mode setting specified in Fiery XJ PS Setup.
Combine Separations On/ <u>Off</u>	When printing separations from a desktop publishing application: Select On to combine separations on a single page. Select Off to view separations as four individual black-and-white pages each representing one color plate.	For more information, see page A-7.
Compression Off/ <u>On</u>	Select Off to disable compression for printing very complex images. This requires a significant amount of memory to process and print; however, images print faster with the best possible image quality. Select On to enable compression when printing multiple-page jobs that do not consist of complex images.	The default setting for printing reflects the Compression setting specified in Fiery XJ PS Setup. For more information, see the <i>Color Guide</i> .
Copies	Specify the number of copies of the job to print.	
Document Facing <u>Face Up</u> /Face Down	Select Face Down to have your print job exit the copier with the printed image face-down. Select Face Up to have your print job exit the copier with the printed image face-up.	
Duplex <u>Off</u> /Top-Top/Top-Bottom	Use this option to specify whether the job should print single-sided or double-sided (duplex), by specifying the orientation of printed images.	For more information on duplex printing, see page A-8.



Option and settings: (Default setting is underlined)	Description:	Requirements, constraints, and information:
<p>Media Type <u>Plain Paper</u>/Transparency/Thick Paper/ Interleaved/Opaque Film</p>	<p>Select Plain Paper if you will be printing on standard bond copier paper. Select Transparency if you will be printing on a transparency. Select Thick Paper if you will be printing on heavy paper stock. Select Interleaved if you will be printing multiple transparencies with blank paper separators. Select Opaque Film if you will be printing on opaque film.</p>	<p>For more information, see page A-9.</p>
<p>Notes 1 and Notes 2</p>	<p>These fields appear in the Printer Job Notes dialog box (Windows) or Job Notes pop-up menu (Mac OS). Use them to enter special information about the job.</p>	<p>The Notes 1 and Notes 2 fields each have a 32-character limit.</p>
<p>(Other) Gamma <u>1.0/1.2/1.4/1.6/1.8/2.0/</u> <u>2.2/2.4/2.6/2.8/3.0</u></p>	<p>Specify a source gamma value for printing RGB images, objects, and text.</p>	<p>To enable this option, RGB Source must be set to Other. For more information, see the <i>Color Guide</i>.</p>
<p>(Other) Phosphors Hitachi EBU/Hitachi-Ikegami/NTSC/ Radius Pivot/<u>SMPTE</u>/Trinitron</p>	<p>Specify a source phosphors value for printing RGB images, objects, and text.</p>	<p>To enable this option, RGB Source must be set to Other. For more information, see the <i>Color Guide</i>.</p>
<p>(Other) White Point <u>5000 K (D50)/5500 K/</u> <u>6500 K (D65)/7500 K/9300 K</u></p>	<p>Specify a source white point value for printing RGB images, objects, and text.</p>	<p>To enable this option, RGB Source must be set to Other. For more information, see the <i>Color Guide</i>. NOTE: This option is most effective with the Rendering Style option set to Solid Color.</p>
<p>Page Order Forward/<u>Reverse</u></p>	<p>Select Forward to print the pages of your job from first to last. Select Reverse to print the pages of your job from last to first.</p>	<p>The default setting for printing reflects the Page Order setting specified in Fiery XJ PS Setup. To enable the Reverse setting, Compression must be set to On.</p>



Option and settings: (Default setting is underlined)	Description:	Requirements, constraints, and information:
Page Range <u>All</u> /Even/Odd/Range (1-3, 5, 7)	Specify which pages of the document to print. To print a contiguous page range, specify the first and last page numbers of the range separated by a hyphen. To print non-contiguous pages, specify the page numbers using commas as separators.	
Paper Source <u>AutoSelect</u> /Tray 1/Tray 2/Tray 3/ Bypass Tray	Select the paper tray to use for your job.	The AutoSelect setting automatically selects the tray containing the paper size specified for the job.
Rendering Style Photographic/Presentation/Solid Color/None	Specify a default color rendering dictionary (CRD) to be used when you print RGB images, objects, and text.	The default setting for printing reflects the Default CRD setting specified in Fiery XJ Color Setup. For more information, see page A-9.
RGB Source EFIRGB/sRGB (PC)/Apple Standard/ Other/Off	Specify a source color space definition for printing RGB images, objects, and text. Select EFIRGB, sRGB (PC), or Apple Standard to set the gamma, white point, and phosphors values at preset levels. Select Other to make custom adjustments to gamma, phosphors, and white point values. See the (Other) Gamma, (Other) Phosphors, and (Other) White Point print options. Select Off to disable any RGB source.	The default setting for printing reflects the RGB Source setting specified in Fiery XJ Color Setup.
Save Fast Reprint <u>Off</u> /On	Specify whether or not to save a job's raster data to disk after printing, so the data will be available later for reprinting (without reRIPping).	With Save Fast Reprint set to On, all print option settings, in addition to the Fiery XJ's current calibration state, remain with the saved raster data each time the job is reprinted. To print the job with new print option settings and with new calibration data, you must remove raster and reRIP the job.
Scale 25% to 400%	Specify a scaling value for your print job.	This option can be set from the printer driver only.



Option and settings: (Default setting is underlined)	Description:	Requirements, constraints, and information:
Slip Sheet <u>On/Off</u>	Specify whether to insert a slip sheet between copies of multiple-copy jobs.	
Sorter Mode <u>Off/On</u>	Specify how to output multiple-page/multiple-copy jobs.	
Spot Color Matching <u>Off/On</u>	Select <u>Off</u> to print specified PANTONE colors in your job using the current CMYK Simulation and CMYK Simulation Method. Select <u>On</u> to activate the PANTONE Lookup Table. The Fiery XJ prints specified PANTONE colors in your job by matching the CMYK print blend to the same color from the PANTONE library.	The default setting for printing reflects the Spot Color Matching setting specified in Fiery XJ Color Setup. For more information, see the <i>Color Guide</i> .
Stapler Mode <u>Off/On</u>	Specify whether or not to staple completed print jobs.	To enable this option, Sorter Mode must be set to Sort.

More about print options

The following sections provide additional information about print options. See the table above for information on the settings, requirements, and constraints in effect for these options.

CMYK Simulation

CMYK Simulation allows you to change the simulation goal for the current print job *only*. As the job begins processing, the simulation goal selected in CMYK Simulation is applied before printing.

NOTE: Choosing Printer's default results in the job being printed with the simulation goal currently set on the Fiery XJ.

SWOP-Coated—Uses the United States press standard.

DIC—Uses the Japanese press standard.

Euroscale—Uses the European press standard.

Custom-1—Uses a custom simulation goal. Before selecting this setting, you are required to create a new simulation goal with Fiery Print Calibrator and name the simulation goal *exactly as follows*: Custom-1.

Custom-2—Uses a second custom simulation goal. Before selecting this setting, you are required to create a new simulation goal with Fiery Print Calibrator and name the simulation goal *exactly as follows*: Custom-2.

Custom-3—Uses a third custom simulation goal. Before selecting this setting, you are required to create a new simulation goal with Fiery Print Calibrator and name the simulation goal *exactly as follows*: Custom-3.

Custom-4—Uses a fourth custom simulation goal. Before selecting this setting, you are required to create a new simulation goal with Fiery Print Calibrator and name the simulation goal *exactly as follows*: Custom-4.

Custom-5—Uses a fifth custom simulation goal. Before selecting this setting, you are required to create a new simulation goal with Fiery Print Calibrator and name the simulation goal *exactly as follows*: Custom-5.

None—Uses no simulation goal. Select this setting when the CMYK data for your job has already been separated for your specific printer (for example, when using the Color Management System built into your computer to convert the CMYK data to the printer's color space).

For more information about calibration, see the *Job Management Guide*.

Color Mode

CMYK—Disables Copier Mode settings and enables Sharpness settings. In this mode, RGB to CMYK color conversions are performed by the Fiery XJ.

Grayscale—Disables Copier Mode and Sharpness settings.

Combine Separations

The Combine Separations option specifies whether to combine color separations (created in desktop publishing applications such as QuarkXPress or Adobe PageMaker) on a single page to simulate printing on a press from film separations. It allows you to proof overprinting, trapping, and other four-color printing effects before having film separations created. It also enables you to combine Desktop Color Separations (DCS) format files to print them at full resolution instead of printing the low-resolution master file. Selecting the appropriate color rendering dictionary (CRD) setting for the type of image you are printing ensures optimal color output on the Fiery XJ.

Your job must have been printed as color separations or DCS format when you printed it from your application. If you did not print the job in this manner, the Combine Separations option has no effect.

Duplex

The following restrictions apply for duplex (two-sided) printing:

- Automatic and manual duplex printing is for plain paper only.
- Neither automatic nor manual duplex printing is available for transparencies.

TO PRINT DUPLEX PAGES:

1. Choose Print in your application, and locate the Duplex print option.

The location of Fiery XJ print options varies, depending on the printer driver you are using.

2. Choose one of the Duplex settings:

Top-Top—Prints the top of the image on side 1 on the same edge of the page as the top of the image on side 2.

Top-Bottom—Prints the top of the image on side 1 on the opposite edge of the page from the top of the image on side 2.

The following table shows how the Duplex settings correspond to printed output:

	Top-Top	Top-Bottom
Portrait		
Landscape		



Media Type

The Media Type option allows you to select the type of media for loading into the bypass tray.

Plain Paper—Standard bond paper from 20 lb to 28 lb (80 g/m² to 105 g/m²)

Transparency—Transparency sheets

Thick Paper—Paper heavier than 28 lb, up to 60 lb cover or 90 lb index (163 g/m²)

Interleaved—Multiple transparency sheets inserted with blank, plain paper separators. With Interleaved selected, the transparencies are fed from the bypass tray and the paper separators are fed from the paper tray.

Opaque Film—Opaque film sheets.

Rendering Style

Use this option to select a default color rendering dictionary (CRD) to be used when you print RGB images, objects, and text.

Photographic—Optimizes the range of colors on the Fiery XJ to produce the best results for photographic or bitmapped images.

Presentation—Optimizes the output of pure, saturated colors such as those used in business presentations.

Solid Color—Most useful for printing spot colors such as those found in company logos or corporate charts and graphs.

Appendix B: Font List

This appendix lists the built-in printer fonts included with your Fiery XJ.

PostScript printer fonts

Listed below are the 136 built-in PostScript printer fonts on the Fiery XJ. In addition to the fonts listed below, two Adobe Multiple Master fonts are included and are used for font substitution in PDF files.

NOTE: For Mac OS computers, install the corresponding screen fonts from the User Software CD. For instructions, see *Getting Started*.

Adobe Type 1 fonts

The Fiery XJ includes 117 Adobe Type 1 fonts:

- The Mac OS column lists the name as it appears on the Font menu on a Mac OS computer. For example, in most applications, to use “Bodoni-Bold,” choose Bodoni Bold from the Font menu.
- The Windows menu name is the name as it appears on the Font menu on a Windows computer. The style refers to the style that must be selected in the application to access the particular PostScript font. For example, to use “Bodoni-Bold,” choose Bodoni from the Font menu and Bold from the Style menu.

PostScript name:	Mac OS menu name:	Windows menu name, style:
AlbertusMT-Light	Albertus MT Lt	Albertus MT Lt
AlbertusMT	Albertus MT	Albertus MT
AlbertusMT-Italic	Albertus MT It	Albertus MT, Italic
AntiqueOlive-Roman	Antique Olive Roman	Antique Olive Roman
AntiqueOlive-Bold	Antique Olive Bold	Antique Olive Roman, Bold
AntiqueOlive-Italic	Antique Olive Italic	Antique Olive Roman, Italic
AntiqueOlive-Compact	Antique Olive Compact	Antique Olive Compact
AvantGarde-Book	Avant Garde	AvantGarde
AvantGarde-Demi	Avant Garde Demi	AvantGarde, Bold
AvantGarde-BookOblique	Avant Garde BookOblique	AvantGarde, Italic
AvantGarde-DemiOblique	Avant Garde DemiOblique	AvantGarde, Bold Italic
Bodoni	Bodoni	Bodoni
Bodoni-Bold	Bodoni Bold	Bodoni, Bold
Bodoni-Italic	Bodoni Italic	Bodoni, Italic



B-2 Font List

PostScript name:	Mac OS menu name:	Windows menu name, style:
Bodoni-BoldItalic	Bodoni BoldItalic	Bodoni, Bold Italic
Bodoni-Poster	Bodoni Poster	Bodoni Poster
Bodoni-PosterCompressed	Bodoni PosterCompressed	Bodoni PosterCompressed
Bookman-Light	Bookman	Bookman
Bookman-Demi	Bookman Demi	Bookman, Bold
Bookman-LightItalic	Bookman LightItalic	Bookman, Italic
Bookman-DemiItalic	Bookman DemiItalic	Bookman, Bold Italic
Carta	Carta	Carta
Clarendon-Light	Clarendon Light	Clarendon Light
Clarendon	Clarendon	Clarendon
Clarendon-Bold	Clarendon Bold	Clarendon, Bold
CooperBlack	Cooper Black	Cooper Black
CooperBlack-Italic	Cooper Black Italic	Cooper Black, Italic
Copperplate-ThirtyThreeBC	Copperplate33bc	Copperplate33bc
Copperplate-ThirtyTwoBC	Copperplate32bc	Copperplate32bc
Coronet	Coronet	Coronet
Courier	Courier	Courier
Courier-Bold	Courier Bold	Courier, Bold
Courier-Oblique	Courier Oblique	Courier, Italic
Courier-BoldOblique	Courier BoldOblique	Courier, Bold Italic
Eurostile	Eurostile	Eurostile
Eurostile-Bold	Eurostile Bold	Eurostile Bold
Eurostile-ExtendedTwo	Eurostile ExtendedTwo	Eurostile ExtendedTwo
Eurostile-BoldExtendedTwo	Eurostile BoldExtendedTwo	Eurostile ExtendedTwo, Bold
GillSans	GillSans	GillSans
GillSans-Bold	GillSans Bold	GillSans, Bold
GillSans-Italic	GillSans Italic	GillSans, Italic
GillSans-BoldItalic	GillSans BoldItalic	GillSans, Bold Italic
GillSans-Light	GillSans Light	GillSans Light
GillSans-LightItalic	GillSans LightItalic	GillSans Light, Italic
GillSans-Condensed	GillSans Condensed	GillSans Condensed
GillSans-BoldCondensed	GillSans BoldCondensed	GillSans Condensed, Bold
GillSans-ExtraBold	GillSans ExtraBold	GillSans ExtraBold
Goudy	Goudy	Goudy

PostScript name:	Mac OS menu name:	Windows menu name, style:
Goudy-Bold	Goudy Bold	Goudy, Bold
Goudy-Italic	Goudy Italic	Goudy, Italic
Goudy-BoldItalic	Goudy BoldItalic	Goudy, Bold Italic
Goudy-ExtraBold	Goudy ExtraBold	Goudy ExtraBold
Helvetica	Helvetica	Helvetica
Helvetica-Bold	Helvetica Bold	Helvetica, Bold
Helvetica-Oblique	Helvetica Oblique	Helvetica, Italic
Helvetica-BoldOblique	Helvetica BoldOblique	Helvetica, Bold Italic
Helvetica-Narrow	Helvetica Narrow	Helvetica-Narrow
Helvetica-Narrow-Bold	Helvetica Narrow Bold	Helvetica-Narrow, Bold
Helvetica-Narrow-Oblique	Helvetica Narrow Oblique	Helvetica-Narrow, Italic
Helvetica-Narrow-BoldOblique	Helvetica Narrow BoldObl	Helvetica-Narrow, Bold Italic
Helvetica-Condensed	Helvetica Condensed	Helvetica Condensed
Helvetica-Condensed-Bold	Helvetica CondensedBold	Helvetica Condensed, Bold
Helvetica-Condensed-Oblique	Helvetica CondensedOblique	Helvetica Condensed, Italic
Helvetica-Condensed-BoldObl	Helvetica CondensedBoldObl	Helvetica Condensed, Bold Italic
JoannaMT	Joanna MT	Joanna MT
JoannaMT-Bold	Joanna MT Bd	Joanna MT, Bold
JoannaMT-Italic	Joanna MT It	Joanna MT, Italic
JoannaMT-BoldItalic	Joanna MT Bd It	Joanna MT, Bold Italic
LetterGothic	Letter Gothic	Letter Gothic
LetterGothic-Bold	Letter Gothic Bold	Letter Gothic, Bold
LetterGothic-Slanted	Letter Gothic Slanted	Letter Gothic, Italic
LetterGothic-BoldSlanted	Letter Gothic BoldSlanted	Letter Gothic, Bold Italic
LubalinGraph-Book	Lubalin Graph	LubalinGraph
LubalinGraph-Demi	Lubalin Graph Demi	LubalinGraph, Bold
LubalinGraph-BookOblique	Lubalin Graph BookOblique	LubalinGraph, Italic
LubalinGraph-DemiOblique	Lubalin Graph DemiOblique	LubalinGraph, Bold Italic
Marigold	Marigold	Marigold
MonaLisa-Recut	Mona Lisa Recut	Mona Lisa Recut
NewCenturySchlbk-Roman	New Century Schlbk	NewCenturySchlbk
NewCenturySchlbk-Bold	New Century Schlbk Bold	NewCenturySchlbk, Bold
NewCenturySchlbk-Italic	New Century Schlbk Italic	NewCenturySchlbk, Italic
NewCenturySchlbk-BoldItalic	New Century Schlbk BoldIt	NewCenturySchlbk, Bold Italic



PostScript name:	Mac OS menu name:	Windows menu name, style:
Optima	Optima	Optima
Optima-Bold	Optima Bold	Optima, Bold
Optima-Italic	Optima Italic	Optima, Italic
Optima-BoldItalic	Optima BoldItalic	Optima, Bold Italic
Oxford	Oxford	Oxford
Palatino-Roman	Palatino	Palatino
Palatino-Bold	Palatino Bold	Palatino, Bold
Palatino-Italic	Palatino Italic	Palatino, Italic
Palatino-BoldItalic	Palatino BoldItalic	Palatino, Bold Italic
StempelGaramond-Roman	StempelGaramond Roman	StempelGaramond Roman
StempelGaramond-Bold	StempelGaramond Bold	StempelGaramond Roman, Bold
StempelGaramond-Italic	StempelGaramond Italic	StempelGaramond Roman, Italic
StempelGaramond-BoldItalic	StempelGaramond BoldItalic	StempelGaramond Roman, Bold Italic
Symbol	Symbol	Symbol
Tekton	Tekton	Tekton
Times-Roman	Times	Times
Times-Bold	Times Bold	Times, Bold
Times-Italic	Times Italic	Times, Italic
Times-BoldItalic	Times BoldItalic	Times, Bold Italic
Univers-Extended	Univers Extended	Univers Extended
Univers-BoldExt	Univers BoldExt	Univers Extended, Bold
Univers-ExtendedObl	Univers ExtendedObl	Univers Extended, Italic
Univers-BoldExtObl	Univers BoldExtObl	Univers Extended, Bold Italic
Univers-Light	Univers 45 Light	Univers 45 Light
Univers-Bold	Univers 65 Bold	Univers 45 Light, Bold
Univers-LightOblique	Univers 45 LightOblique	Univers 45 Light, Italic
Univers-BoldOblique	Univers 65 BoldOblique	Univers 45 Light, Bold Italic
Univers	Univers 55	Univers 55
Univers-Oblique	Univers 55 Oblique	Univers 55, Italic
Univers-CondensedBold	Univers 67 CondensedBold	Univers 47 CondensedLight, Bold
Univers-CondensedBoldOblique	Univers 67 CondensedBoldObl	Univers 47 CondensedLight, Bold Italic

PostScript name:	Mac OS menu name:	Windows menu name, style:
Univers-Condensed	Univers 57 Condensed	Univers 57 Condensed
Univers-CondensedOblique	Univers 57 CondensedOblique	Univers 57 Condensed, Italic
ZapfChancery-MediumItalic	Zapf Chancery	ZapfChancery
ZapfDingbats	Zapf Dingbats	ZapfDingbats

TrueType fonts

The Fiery XJ includes 19 TrueType fonts:

PostScript name:	Mac OS menu name:	Windows menu name, style:
Apple-Chancery	Apple Chancery	Apple Chancery
Arial-BoldItalicMT	Arial Bold Italic	Arial, Bold Italic
Arial-BoldMT	Arial Bold	Arial, Bold
Arial-ItalicMT	Arial Italic	Arial, Italic
ArialMT	Arial	Arial
Chicago	Chicago	Chicago
Geneva	Geneva	Geneva
HoeflerText-Black	Hoefler Text Black	Hoefler Text Black
HoeflerText-BlackItalic	Hoefler Text Black	Hoefler Text Black, Italic
HoeflerText-Italic	Hoefler Text	Hoefler Text, Italic
HoeflerText-Ornaments	Hoefler Text Ornaments	Hoefler Text Ornaments
HoeflerText-Regular	Hoefler Text	Hoefler Text
Monaco	Monaco	Monaco
New York	New York	New York
TimesNewRomanPS-BoldMT	Times New Roman Bold	Times New Roman, Bold
TimesNewRomanPS-BoldItalicMT	Times New Roman Bold Italic	Times New Roman, Bold Italic
TimesNewRomanPS-ItalicMT	Times New Roman Italic	Times New Roman, Italic
TimesNewRomanPSMT	Times New Roman	Times New Roman
Wingdings-Regular	Wingdings	Wingdings

Appendix C: Troubleshooting

This appendix provides troubleshooting tips.

Maintaining optimal system performance

The Fiery XJ does not require maintenance. Beyond the routine requirements of servicing and maintaining the copier and replenishing consumables there are a few things you can do to improve the overall performance of your system:

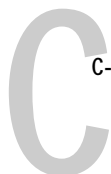
- Reduce unnecessary two-way communication.

If users notice that the server is frequently too busy to receive jobs, it may be because several users are running utilities that are updated often. Large numbers of remote users running Fiery Downloader or the Fiery WebTools may have a significant effect on Fiery XJ performance.

- Schedule the printing workload by checking job ticket information before printing. Print jobs with the same output and paper specifications together to minimize paper changes. Also, print routine jobs while you prepare to print jobs with special instructions or special media.
- Reduce unnecessary server connections at the Command WorkStation. If you use a second or third Fiery XJ Color Server on an occasional basis, performance will be improved if you log off when you are not using it.
- Avoid printing with the server “Disk full” warning.

If you see this warning, delete jobs from the Queues window that have been held for a long time and are not likely to be needed. Avoid this condition by deleting old jobs on a regular basis. The date associated with a job is the original date it was sent.

Even when the disk is full, 128KB of disk space is reserved for printing a tabloid size job, but printing proceeds only when the oldest printed job is deleted from the Printed queue (Print area).



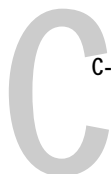
Troubleshooting

In case of problems, and before you call for service, check the guidelines in this section. If you are unable to resolve the problem, make a note of the error condition and contact your authorized service/support center.

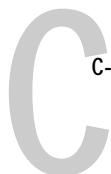
This section provides some troubleshooting guidelines should a problem arise. If you are unable to resolve a problem after referring to this section, contact your site operator or administrator.

General printing problems

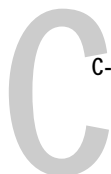
If this happens:	Try this:
You cannot connect to a Fiery XJ.	<ul style="list-style-type: none">• Make sure that the Fiery XJ is not being calibrated. If the Fiery XJ is being calibrated, you can select it in the Chooser, but you cannot connect to it. This insures that only one person is calibrating the server at any time and that print jobs do not use unexpected calibration.
You cannot select or view one of the queues.	<ul style="list-style-type: none">• Have your system administrator enable the queue in Setup.
You cannot connect to the Fiery XJ from a Windows computer with the Command WorkStation or Fiery utilities.	<ul style="list-style-type: none">• Make sure the connection is configured correctly. For instructions, see <i>Getting Started</i>.
Printing seems to take too long.	<ul style="list-style-type: none">• Print to a queue instead of to the Direct connection. When you print to a queue, the job is stored on the Fiery XJ until it can be processed and printed; when you print to the Direct connection, the job cannot be sent to the Fiery XJ until the previous job is finished processing, so you must wait longer to use your computer.
Special paper or transparency options are dimmed.	<ul style="list-style-type: none">• Select a Paper Source that supports the media type you are using. For information on requirements and constraints pertaining to special papers and transparencies, see Appendix A, "Print Options."



If this happens:	Try this:
<p>Fiery XJ doesn't respond to a Print command.</p>	<ul style="list-style-type: none">• Has someone disconnected the copier by selecting Suspend Printing from the Functions menu? <p>If the administrator or operator has selected Suspend Printing on the Fiery XJ Control Panel or Command WorkStation to interrupt printing (so that someone can make a color copy, for example), your print job will not resume until someone selects Resume Printing from the Functions menu on the Control Panel or clicks the function key on the Command WorkStation.</p>• Did you select the Fiery XJ as the current printer? <p>Before printing, you must select the Fiery XJ as the current printer from your Windows computer, Mac OS computer, or UNIX workstation.</p>• Make sure that the copier is switched on. <p>Someone may have turned the copier off, or the Automatic Power-Off or Power Saver mode function may have engaged. Even with the copier off, the Fiery XJ appears in the Chooser as long as the Fiery XJ itself is turned on.</p>• If you are printing over an IPX (Novell) network, verify through the PCONSOLE utility that the job was sent to the Novell queue and that the queue is being used by the Fiery XJ.• Make sure that the job does not contain a PostScript error. <p>Check with the operator, or use Fiery WebSpooler to check the job's status. In Fiery WebSpooler, a job containing a PostScript error appears in red.</p>
<p>Message requests a paper size that you don't have.</p>	<ul style="list-style-type: none">• Cancel the job and do one of the following: <p>If you are printing a PostScript file, ask the administrator to set the Convert Paper Sizes setting in Printer Setup to convert the job to a paper size you do have. You can do this to convert between US and metric paper sizes.</p><p>If you are printing a file from an application, change the page size in the Page Setup dialog box.</p>



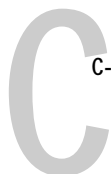
If this happens:	Try this:
Jobs sent to the parallel port do not print.	<ul style="list-style-type: none">• Ask the administrator to increase the parallel “Port Timeout in Seconds” on the Fiery XJ Control Panel.• Ask the administrator to change the Ignore EOF Character setting on the Fiery XJ Control Panel. If you will be printing ASCII format PostScript only, set Ignore EOF Character to No; if you will be printing Binary format PostScript, set it to Yes.• If you print using the DOS copy command, make sure to use the /b option when printing binary files.• Restart your Windows computer, enter BIOS setup, and if you have a BIOS setting for the parallel port, make sure that it is set to Compatible mode and not to Bi-Directional, ECP, EPP, or any other mode.• If you are using Windows 95, open the System Properties control panel, click the Device Manager tab, click Ports, double-click the parallel port you are using, and make sure that the driver selected is the standard Printer Port driver instead of the ECP Port, EPP Port, or any other driver. For information about changing this setting, see <i>Getting Started</i> and your Windows 95 documentation.• If the PostScript Printer Driver that you are using lets you select bi-directional communication, make sure that it is disabled. This is generally set from the Properties dialog box for the printer.
You cannot print with QuarkXPress 3.32 using the PSPrinter 8.5.1 driver on a Mac OS computer.	<ul style="list-style-type: none">• Remove the file called Balloon Help from your QuarkXPress application folder and relaunch QuarkXPress.



Problems with print quality

For information about printing with specific applications and about optimizing color output, see the *Color Guide*.

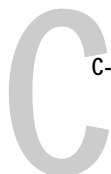
If this happens:	Try this:
Print settings for your job output do not match the settings you gave.	<ul style="list-style-type: none">• Make sure that you did not override the setting for the job in another place. For information about options and overrides, see Appendix A, “Print Options.”
You get poor printing results.	<ul style="list-style-type: none">• Does your application require one of Fiery XJ's printer description files? If you're printing from an application such as Adobe Separator or PageMaker, MacroMedia FreeHand, or QuarkXPress, make sure that the Fiery XJ printer description file is installed correctly. For information about installing these files, see <i>Getting Started</i>.• Make sure the system has been calibrated. For instructions, see the <i>Job Management Guide</i>.• Try printing with Compression set to Off. In general, Compression increases processing speed without affecting print quality, so you should leave it on unless it affects the print quality of specific files.
Separations do not combine properly.	<ul style="list-style-type: none">• Make sure that the file was initially created as separations.• If you are printing separations or a DCS format file, set the Combine Separations print option to On. With Combine Separations On, all four colors will be printed on a single page; with Combine Separations Off, four black-and white pages will print to simulate four single-color plates.
The registration or colors of an image are not what you expected.	<ul style="list-style-type: none">• Ask the operator to print a test page or make a test copy with the copier. The problem may be with the copier. If your test page or copy show that the copier is working properly, correct the problem within your application software. If the test page or copy are wrong, your copier may need to be calibrated or adjusted in some other way.



If this happens:	Try this:
Your printed file appears too dark.	<ul style="list-style-type: none">• Adjust the Brightness option. You can use the Brightness option when printing from an application or from Fiery Downloader to lighten your image whenever you print a PostScript or Encapsulated PostScript (EPS) file.
Color output is incorrect.	<ul style="list-style-type: none">• Check with the operator or administrator about the current calibration information. The copier may need to be recalibrated because it has been too long since it was calibrated or because it is using a different target.
Color file prints in black and white.	<ul style="list-style-type: none">• In the Color Matching dialog box, make sure that Color/Grayscale or ColorSync Color Matching or PostScript Color Matching is selected (not Black and White).• Make sure that the Color Mode print option is set to CMYK and not Grayscale.
Desktop Color Separations (DCS) format images print incorrectly.	<ul style="list-style-type: none">• Make sure that you selected the correct options to send separations in the application's Print dialog box.• Make sure that you have the file for every layer of separation that you are printing.• Set the Combine Separations option to On. This combines the high-resolution files for an image and prints them. With Combine Separations Off, the low-resolution master file will print.
QuickDraw fill patterns print as solids.	<ul style="list-style-type: none">• Use the Adobe PostScript Printer driver (or the Apple LaserWriter 8.3 or later printer driver).

Problems with Fiery Downloader

If this happens:	Try this:
General problems	<ul style="list-style-type: none">• Make sure that you are using the latest version. If you are updating your Fiery XJ to new system software, delete the previous version of Fiery Downloader from your Windows or Mac OS computer and install the latest version to insure full compatibility.• Make sure the connection is configured correctly. For instructions, see <i>Getting Started</i>.



If this happens:	Try this:
You can't print an EPS file using Fiery Downloader.	<ul style="list-style-type: none">• Try printing using the 'showpage' after EPS files (Windows) or 'showpage' (Mac OS) option in the Download PostScript File dialog box. This option adds a showpage PostScript language command at the end of the print job. Certain applications omit this necessary PostScript language command when they generate EPS files. You'll need to select the Append Showpage option when printing EPS files generated by these applications. If you continue having difficulties printing an EPS file with Fiery Downloader, try printing the file from the application in which it was created.• Make sure the EPS file was saved <i>without</i> a preview image header. Preview image headers are useful when images are placed in documents with page layout applications, but they cause problems when images are downloaded directly.• Make sure that the job does not contain a PostScript error. Check with the operator, or use the Command WorkStation, Fiery WebSpooler, or Fiery Spooler to check the job's status. Jobs with a PostScript error appear with an Error icon.
You have problems downloading a font with Fiery Downloader.	<ul style="list-style-type: none">• Check with the administrator to make sure that the Direct connection is enabled. The Direct connection must be used to download fonts.
Extra blank page prints after a Fiery Downloader job.	<ul style="list-style-type: none">• Turn off the 'showpage' after EPS files (Windows) or 'showpage' (Mac OS) option. This option adds a special PostScript command that will cause an extra blank page to print if it is not needed.

Problems with Fiery WebTools

If this happens:	Try this:
General problems	<ul style="list-style-type: none">• Clear the cache (Netscape Communicator) or history (Microsoft Internet Explorer).

Index

A

Adobe Font Downloader, *see* Font Downloader
Adobe Type 1 fonts B-1
AppleTalk 2-2

B

Black Detection option A-2
Brightness option A-1, A-2
BSD 3-2

C

CMYK color mode A-7
CMYK Simulation Method option A-2
CMYK Simulation option A-2, A-6
Collation option A-3
Color Mode option A-3, A-7
color problems C-6
Combine Separations option A-3, A-7
Command WorkStation
 managing print jobs 5-1
 overriding Printer Setup settings 1-4, 1-7, 1-10
 using Fiery Downloader from 4-1
compression C-5
Compression option A-3
Control Panel, printer settings
 overridden 1-10

D

DCS (Desktop Color Separations) C-6
default settings, *see* printer default settings
DIC simulation goal A-6
Direct connection
 access xi
 not in Chooser, Mac OS 2-2
 required to download fonts 4-7, C-7
Document Facing option A-3

Downloader, *see* Fiery Downloader
downloaders, LaserWriter 4-1
Duplex option A-3, A-8

E

EPS (Encapsulated PostScript) files
 downloading 4-1
 downloading from Mac OS 2-5
 downloading from Windows 1-1, 1-11
 problems downloading C-7
Euroscale simulation goal A-6

F

Fiery Downloader
 Brightness option 4-6
 choosing a printer 4-3
 Command WorkStation 4-1
 Connection Type 4-4
 downloading file or font 4-3 to 4-6
 Download Progress bar 4-2
 Hard Disk area 4-2
 installing printer fonts 4-8
 job overrides A-1
 Mac OS 2-5
 PDF files 1-1
 printing from 4-3
 Print Status area 4-2
 problems with C-6
 Queue 4-4
 restriction with parallel port 1-10
 RIP Status area 4-2
 Toolbar 4-2
 using 4-1
 Windows 1-11
Fiery WebTools
 accessing xi, 5-1, 5-2
 home page 5-1
 overview 5-2

- problems with C-7
 - Status 5-1, 5-2
 - WebLink 5-2
 - WebSpooler 1-4, 1-7, 1-10
- File name entry field 4-5
- File port, saving files to 1-11
- Files of type menu (Windows) 4-4
- Font Downloader 4-1
- font list
 - Adobe Type 1 B-1
 - displaying 4-2, 4-9
 - PostScript B-1 to B-5
 - printing 4-2, 4-9
 - TrueType B-5
- Font List button 4-2
- fonts
 - Adobe Type 1 4-7, 4-8, B-1
 - downloading and managing 4-1, 4-4, 4-7
 - installing 4-8
 - PostScript 4-8
 - printer fonts 4-7
 - printer fonts on server 4-9
 - screen fonts 4-7
 - substitution with PDF files 4-8
 - TrueType 4-7, B-5
- Font Substitution Table 4-7
- G**
 - Gamma option A-4
 - Grayscale color mode A-7
- H**
 - Hold queue xi, 2-2
- I**
 - installing printer fonts 4-8
 - Interleaved option A-9
- J**
 - job overrides
 - (Other) Gamma option A-4
 - (Other) Phosphors option A-4
 - (Other) White Point option A-4
 - Black Detection option A-2
 - Brightness option A-2
 - CMYK Simulation Method option A-2
 - CMYK Simulation option A-2, A-6
 - Collation option A-3
 - Color Mode option A-3, A-7
 - Combine Separations option A-3, A-7
 - Compression option A-3
 - Document Facing option A-3
 - Duplex option A-3, A-8
 - Media Type option A-4, A-9
 - Page Order option A-4
 - Page Range option A-5
 - Paper Source option A-5
 - print settings A-1
 - Rendering Style option A-5, A-9
 - RGB Source option A-5
 - Save Fast Reprint option A-5
 - Slip Sheet option A-6
 - Sorter Mode option A-6
 - Spot Color Matching option A-6
 - Stapler Mode option A-6
- L**
 - LaserWriter printer, fonts installed on 4-7
 - lp command 3-2
 - lpq command 3-1, 3-2, 3-3
 - lpr command 3-1
 - lprm command 3-1, 3-3
 - lpstat command 3-2
- M**
 - Mac OS
 - Paper Source menu 2-3
 - PostScript printer setup 2-2 to 2-4
 - Printer Specific Options menu 2-3
 - printing 2-1 to 2-5
 - screen fonts 4-7
 - trap selection 2-3

Mac OS 2-4
Media Type option A-4, A-9

N

None simulation goal A-7
Notes fields
 Mac OS 2-3
 Windows 3.1x 1-8
 Windows 95 1-4

O

(Other) Gamma option A-4
(Other) Phosphors option A-4
(Other) White Point option A-4
overrides, of job settings A-1

P

Page Order option A-4
Page Range option A-1, A-5
Paper Source menu
 Mac OS 2-3
 Windows 3.1x 1-6
 Windows 95 1-2
 Windows NT 4.0 1-9
Paper Source option A-5
parallel port
 printing with 1-10
 problems C-4
PDF files
 downloading 1-1, 4-1
 downloading from Mac OS 2-5
 downloading from Windows 1-11
 font substitution 4-8
performance, optimizing C-1
Phosphors option A-4
Photographic rendering style option A-9
Photoshop, transfer functions 4-6
Plain Paper option A-9
Portable Document Format, *see* PDF files
PostScript
 downloading files 4-1
 downloading files from Mac OS 2-5

 downloading files from Windows 1-11
 font list B-1 to B-5

PostScript printer description files, *see* PPDs
PostScript printer drivers

 explained x
 Mac OS 2-1
 Windows 3.1x 1-5
 Windows 95 1-1
 Windows NT 4.0 1-8

PPDs (PostScript printer description files)

 defaults A-2
 explained x
 options A-1
 setting print options with Mac OS 2-1
 setting print options with
 Windows 3.1x 1-5
 setting print options with
 Windows 95 1-1
 setting print options with
 Windows NT 4.0 1-8

Presentation rendering style option A-9

Print command (Windows) 1-1

printer default settings 2-4

 Mac OS 2-4
 specified by administrator in Setup xi
 where to set A-1
 Windows 3.1x 1-7
 Windows 95 1-4
 Windows NT 4.0 1-10

printer setup

 Mac OS 2-2 to 2-4
 settings 1-10
 Windows 3.1x 1-6 to 1-8
 Windows 95 1-2 to 1-5
 Windows NT 4.0 1-8 to 1-10

Printer Specific Options menu 2-3

printing

 duplex A-3, A-8
 font list 4-2
 from Fiery Downloader 4-3
 from Mac OS applications 2-1 to 2-5

- list of fonts 4-9
- on the network xi
- to local port 1-11
- troubleshooting C-2 to C-4
- Windows 3.1x 1-5
- Windows 95 1-1
- Windows NT 4.0 1-8
- with parallel port 1-10
- print options
 - Mac OS 2-2 to 2-4
 - settings 1-5
 - specific to color server 1-4, 1-7, 1-10
 - Windows 3.1x 1-6 to 1-8
 - Windows 95 1-2 to 1-5
 - Windows NT 4.0 1-8 to 1-10
- print quality, problems with C-5
- Print queue xi
 - access xi
 - not in Chooser, Mac OS 2-2

Q

- queues, access to xi

R

- remote users ix
- Rendering Style option A-5, A-9
- RGB Source option A-5
- RIPping x

S

- Save Fast Reprint option A-5
- Show menu (Mac OS) 4-4
- showpage after EPS files option 4-6
- Slip Sheet option A-6
- Solid Color rendering style option A-9
- Sorter Mode option A-6
- Spot Color Matching option A-6
- Stapler Mode option A-6
- Status WebTool, *see* Fiery WebTools
- SunOS 4.1.x 3-2
- Sun Solaris 2.x 3-2
- SWOP-Coated simulation A-6

T

- TCP/IP printing 3-1
- Thick Paper option A-9
- Top-Bottom, duplex option A-8
- Top-Top, duplex option A-8
- Transparency option A-9
- tray selection
 - Mac OS 2-3
 - Windows 3.1x 1-6
 - Windows 95 1-2
 - Windows NT 4.0 1-9
- troubleshooting
 - color problems C-6
 - EPS files C-7
 - Fiery Downloader C-6
 - Fiery WebTools C-7
 - general printing problems C-2 to C-4
 - print quality C-5
- TrueType fonts B-5

U

UNIX

- BSD (Berkeley Software Distribution)
 - variant of 3-3
- displaying jobs in queue with 3-2
- printing with 3-1
- removing jobs from queue with 3-3
- System V 3-2

W

- WebLink, *see* Fiery WebTools
- WebSpooler, *see* Fiery WebTools
- WebTools, *see* Fiery WebTools
- White Point option A-4
- Windows 3.1x
 - Paper Source menu 1-6
 - PostScript printer driver 1-5
 - printer default settings 1-7
 - printing with 1-5
 - print options 1-6 to 1-8
 - tray selection 1-6

Windows 95

- Notes fields 1-4
- Paper Source menu 1-2
- PostScript printer driver 1-1
- printer default settings 1-4
- printing with 1-1
- tray selection 1-2

Windows NT 4.0

- Paper Source menu 1-9
- printer default settings 1-10
- printing with 1-8
- print options 1-8 to 1-10
- tray selection 1-9

