



Fiery® EXP6000/EXP5000 Color Server

SERVER & CONTROLLER SOLUTIONS



Welcome

© 2005 Electronics for Imaging, Inc. The information in this publication is covered under *Legal Notices* for this product.

45049003
15 March 2005





WELCOME

This *Welcome* manual provides system requirements and an overview of how to set up the Fiery EXP6000/EXP5000 Color Server so that you can begin printing. It describes the initial tasks you must perform and points you to sections in the user documentation where the procedures are described in detail. This guide also provides a description of the user manuals on the User Documentation CD and instructions on printing them.

This manual assumes that you have already installed the digital press components. Details about the digital press, the network, remote computers, software applications, and Microsoft Windows are beyond the scope of this guide.

Terminology and conventions

This manual uses the following terminology and conventions.

Term or convention	Refers to
Aero	Fiery EXP6000/EXP5000 (in illustrations and examples)
Digital press	DocuColor 6060/5252/2060/2045
Fiery EXP6000/EXP5000	Fiery EXP6000/EXP5000 Color Server
Titles in <i>italics</i>	Other books in this documentation set
Windows	Microsoft Windows 98, Windows Me, Windows NT 4.0, Windows 2000, Windows XP, Windows Server 2003
	Topics for which additional information is available by starting Help in the software
	Tips and information
	Important information
	Important information about issues that can result in physical harm to you or others

About the documentation

This manual is part of a set of documentation provided to users and system administrators of Fiery EXP6000/EXP5000. The documents are on the User Documentation CD and are in PDF (Portable Document Format). These files can be viewed online or printed using Adobe Reader. When viewed online, these files contain links and cross-references that allow you to quickly and easily locate needed information. Use the most recent version of Reader to take advantage of advanced search capabilities. For more information, see [“Installing and using Adobe Reader”](#) on page 5.

The following comprise the documentation set for your Fiery EXP6000/EXP5000:

- *Welcome* provides an introduction to the Fiery EXP6000/EXP5000 and the user documentation.
- *Configuration and Setup* explains configuration and administration of the Fiery EXP6000/EXP5000 for supported platforms and network environments. It also includes guidelines for providing printing services to users.
- *Printing from Windows* and *Printing from Mac OS* describe how to install the printer drivers on Windows and Apple Mac OS computers, establish printing connections for different networks, and begin printing from users' computers. Each manual also describes the installation and use of print-related utilities, such as EFI Job Monitor.
- *Printing from UNIX* describes how to set up printing connections for the network and begin printing from a client workstation.
- *Print Options* provides information about print options for the Fiery EXP6000/EXP5000. This manual describes print options and features that you access from the printer driver, EFI Command WorkStation job overrides, and EFI Hot Folders job properties.
- *Utilities* describes how to install, configure, and use the software utilities included on the User Software CD.
- *Color Printing* explains how to manage color output on the Fiery EXP6000/EXP5000. This manual provides information about EFI Fiery ColorWise Pro Tools, including how to calibrate the Fiery EXP6000/EXP5000 and set EFI Fiery ColorWise print options from Windows and Mac OS computers.
- *Fiery Graphic Arts Package* addresses the specific needs and requirements of graphic arts professionals and commercial print shops.
- *Fiery Color Reference* provides an overview of color management concepts and workflows, and describes how to manage color from various applications.
- *Workflow Examples* explains complicated printing scenarios and provides cross-references to relevant information in the documentation set.
- *Variable Data Printing* supplements the information in *Workflow Examples* with reference information about VDP (variable data printing). This manual provides an overview of EFI Fiery FreeForm and where to set FreeForm options.

- *Glossary* provides definitions for popular color concepts, printing applications, and printing terms used in the documentation set.
- *Customer Release Notes* provide last-minute product information and workarounds for some of the problems you may encounter.

About Help



Most of the user software, utilities, and printer drivers contain Help that is accessible from Help buttons or main toolbar menus. Help provides detailed procedures on using the application and, in some cases, provides additional detail. The documentation refers you to Help for more information as appropriate.

Installing and using Adobe Reader

For your convenience, the current version of Adobe Reader for Windows and Mac OS X is included on the User Documentation CD. This version features enhanced capabilities for full rules-based searches across the documentation set. We strongly suggest that you install the current version of Reader to take advantage of these capabilities, unless you have installed the equivalent version of Adobe Acrobat.

TO INSTALL ADOBE READER

- 1 **Insert the User Documentation CD into the CD-ROM drive of your computer.**
- 2 **Double-click the CD icon.**
- 3 **Open the Adobe Reader folder.**
- 4 **Open the folder for your platform and double-click the installer file within (.exe for Windows, .dmg for Mac OS X).**
- 5 **Follow the on-screen installation instructions.**

Using Adobe Reader

View or print the PDF files provided on the User Documentation CD using Reader or Acrobat. Once you install Reader, you can double-click a PDF icon to open the file. Note the advanced search capabilities of the version of Reader that is provided on this User Documentation CD. You can search for a word or phrase across the Fiery EXP6000/EXP5000 documentation set by examining all the documents within a specific language folder on the User Documentation CD. For information on using this and other features of Reader, see the Help that accompanies the application.

NOTE: You can view user documentation from the CD or copy the language folder that you want to your desktop. If you copy the files to your computer, keep all the files in the language folder, and do not rename the files. If you rename the files, the cross-reference links will not work properly.

System requirements for user computers

To install the Fiery EXP6000/EXP5000 user software on a Windows or Mac OS computer, the computer must be equipped with a built-in or external DVD-ROM or CD-ROM drive. The following table lists the minimum system requirements.

Minimum requirements for	Windows 98/Me	Windows NT 4.0	Windows 2000/XP/ Server 2003	Mac OS
Operating system	Windows 98/Me	Windows NT 4.0 with NT Service Pack 6	Windows 2000 with Service Pack 4 Windows XP (recommended with Service Pack 2) Windows Server 2003 Standard Edition, Enterprise Edition, or Datacenter Edition (any of these must be the 32-bit version)	Mac OS v9.1 to 9.2.2 Mac OS X v10.2.4 to 10.3.4 (PostScript printer driver only)
Memory for printing and utilities (Fiery Downloader, ColorWise Pro Tools, and Job Monitor)	8MB of RAM for printing 32MB of RAM for utilities			32MB of RAM for printing 64MB of RAM for utilities
Networking protocol	IPX/SPX or TCP/IP			AppleTalk (EtherTalk supported) TCP/IP (required for Mac OS X v10.2.4 to 10.3.4)
Networking protocol for Fiery utilities	TCP/IP			TCP/IP (required for Mac OS X v10.2.4 to 10.3.4) (EtherTalk supported) NOTE: AppleTalk is used for Downloader.

Minimum requirements for	Windows 98/Me	Windows NT 4.0	Windows 2000/XP/Server 2003	Mac OS
PostScript printer driver	Adobe PostScript Printer Driver for Windows (included with user software)	Adobe PostScript Printer Driver for Windows NT 4.0 (included with user software)	Microsoft PostScript Printer Driver for Windows 2000/XP/Server 2003 (included with the operating system)	Adobe PostScript Printer Driver (included with the user software for Mac OS and the operating system for Mac OS X)
<p>NOTE: The Fiery EXP6000/EXP5000 supports limited printer driver options on Windows 98, Windows Me, Windows NT 4.0, and Mac OS 9. You can still print to the Fiery EXP6000/EXP5000 from these computers using the Fiery EXP6000/EXP5000 printer driver, however not all Fiery EXP6000/EXP5000 options may be available. To access all Fiery EXP6000/EXP5000 options from these computers, send the job to the Fiery EXP6000/EXP5000 Hold queue and override the job from Command WorkStation.</p> <p>For more information, see <i>Printing from Windows</i> and <i>Printing from Mac OS</i>.</p>				
WebTools	<p>Java-enabled web browser:</p> <ul style="list-style-type: none"> • Internet Explorer v5.5 with SP2 (Windows 98/Me/NT 4.0/2000) • Internet Explorer v6.0 with SP1 (Windows XP) • Internet Explorer v5.1 to 5.1.7 for Mac OS (up to v5.2.3 for Mac OS X) <p>NOTE: Microsoft releases updates to Internet Explorer. Because support cannot be guaranteed for all versions, use the versions specified for best results.</p> <p>NOTE: EFI WebSpooler is not supported on Mac OS X.</p> <p>A monitor and video memory that supports 16-bit color at a minimum resolution of 800x600</p> <p>A TCP/IP-enabled network and the IP address or DNS name of the Fiery EXP6000/EXP5000</p> <p>Web Services enabled on the Fiery EXP6000/EXP5000</p>			

Minimum requirements for	Windows 98/Me	Windows NT 4.0	Windows 2000/XP/ Server 2003	Mac OS
Command WorkStation	Windows-based computer with a 200-MHz or greater Pentium processor			Mac OS X Native v10.2.4 or later 300MHz or greater Apple Macintosh G3, G4, or G5 processor
	60MB available hard disk space for installation			80MB available hard disk space for installation 500MB is recommended for writing full previews of raster files and handling large PS or PDF files
	128MB of RAM			
	A monitor that supports 16-bit color at a minimum resolution of 1024x768 Video adapter card with 2MB of video memory TCP/IP networking protocol installed			
	2x CD-ROM drive			
EFI Impose on Command WorkStation (Windows only)	In addition to requirements for Command WorkStation: <ul style="list-style-type: none"> • Windows-based computer with 333-MHz Pentium processor • 90MB of available hard disk space • Dongle to be installed on parallel port for every client workstation • Acrobat CD and PitStop CD 			

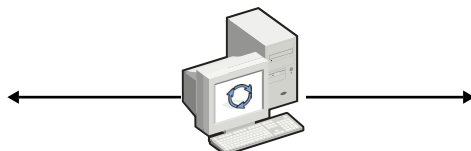
Other Network Requirements

UNIX (TCP/IP) workstation	<p>Standard TCP/IP connectivity</p> <p>TCP/IP printing software that conforms to RFC1179 (Berkeley lpd protocol)</p> <p>Support for Ethernet SNAP, Ethernet II, Ethernet 802.3, and Ethernet 802.2 frame types</p> <p>Sun OS 4.1.3 or later</p> <p>Solaris 8 or later</p>
IPX (Novell) network	<p>Novell server</p> <p>Novell NetWare software v5.x or later</p> <p>NOTE: The iPrint feature of NetWare 6.x is not supported.</p> <p>NDPS gateway in NetWare 5.x or later</p>

Preparing to print

To set up your Fiery EXP6000/EXP5000 for printing, do the following:

Network server configuration



Network server

Configure network servers to specify Fiery EXP6000/EXP5000 Print queues and users.

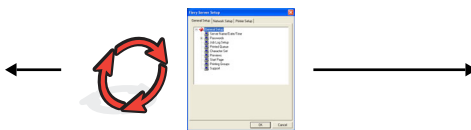
Connection



Fiery EXP6000/EXP5000

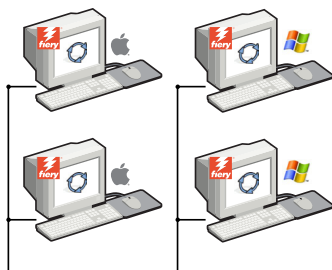
Prepare a network node. Connect the Fiery EXP6000/EXP5000 to the network. Connect the Fiery Advanced Controller Interface (FACI) to the network.

Fiery EXP6000/EXP5000 Setup



At the FACI, configure at least Server Setup, Network Setup, and Printer Setup.

Client computer Setup



At each computer from which users print:

- Install the appropriate printer files and connect to one or more print connections.
- Install Fiery utilities and an Internet browser on computers where users will use them.
- Verify the Fiery EXP6000/EXP5000 in the list of printers and print a test job.

Fiery EXP6000/EXP5000 is now available on the network and is ready for printing.

Configuring the network server

If you require a network server, you must configure it to provide user access to the Fiery EXP6000/EXP5000 as a networked printer before you configure Fiery EXP6000/EXP5000 network settings in Setup. For more information, see *Configuration and Setup*.

Connecting the Fiery EXP6000/EXP5000 to a functioning network

When you add the Fiery EXP6000/EXP5000 to a network, it is assumed that a network administrator has already installed a network cabling system and connected computers and servers.

To CONNECT THE FIERY EXP6000/EXP5000 TO A NETWORK

- 1 **Prepare a network node for the Fiery EXP6000/EXP5000.**
- 2 **Attach the network cable to the network connector of the Fiery EXP6000/EXP5000.**

For more information, see *Configuration and Setup*.

- 3 **Connect the Fiery EXP6000/EXP5000 to the digital press.**
- 4 **Print a Test Page to verify that the digital press is functioning normally.**

For more information, see *Configuration and Setup*.

Setting up the Fiery EXP6000/EXP5000

Setup configures the Fiery EXP6000/EXP5000 to communicate with other devices and manage print jobs. You must perform Setup the first time you turn on the Fiery EXP6000/EXP5000 after new system software is loaded, or any time that Server software is reinstalled.

NOTE: Setup from the Control Panel is not supported. Use local or remote Setup. For more information, see *Configuration and Setup*.

Configure the Setup menus in the following order:

Server Setup specifies system options.

Network Setup specifies all the active network systems that transmit print jobs to the Fiery EXP6000/EXP5000.

Printer Setup specifies how print jobs and queues are managed.

This is the minimum configuration required to enable your Fiery EXP6000/EXP5000 so that users can begin printing. To configure network settings in Setup, you need a live network connection so that the Fiery EXP6000/EXP5000 can query the network for zones, servers, and server-based queues.

TO PREPARE FOR FIERY EXP6000/EXP5000 CONFIGURATION

- 1 Make sure that the network is installed and operational.
- 2 Print a digital press Test Page to verify that the digital press is functioning properly.
- 3 Turn off the digital press and connect the interface cable from the digital press to the Fiery EXP6000/EXP5000.
- 4 To confirm this connection, restart the Fiery EXP6000/EXP5000 and print a Test Page from Command WorkStation.

The Fiery EXP6000/EXP5000 Control Panel is not supported. You can print a Test Page from Command WorkStation when you are connected to the Fiery EXP6000/EXP5000. To do so, choose Print Pages from the Server menu in the Active Jobs window.

- 5 With both the digital press and the Fiery EXP6000/EXP5000 turned off, connect the network cable to the Fiery EXP6000/EXP5000.
- 6 Turn on the digital press and the Fiery EXP6000/EXP5000.

TO PRINT THE CONFIGURATION PAGE FROM COMMAND WORKSTATION

- 1 In Command WorkStation, choose Print Pages from the Server menu.
- 2 Click Configuration.
- 3 Click Print.

Preparing user computers for printing

Before you can print to the Fiery EXP6000/EXP5000, you must install the appropriate Fiery EXP6000/EXP5000 software printer files from the User Software CD and connect users' computers to the Fiery EXP6000/EXP5000 over the network.

Windows computers

To set up printing for the supported Windows operating systems, do the following:

- Install the printer drivers and corresponding printer driver files.
- Configure installable print options.
- Configure the print connection between the client and the Fiery EXP6000/EXP5000.

For more information, see *Printing from Windows*.

Mac OS computers

To set up printing on a Mac OS computer, do the following:

- Install the printer driver and PPD files.
- Set up the Fiery EXP6000/EXP5000 in the Chooser (Mac OS 9 and Mac OS X Classic) or the Print Center (Mac OS X).
- Configure installable print options.

For details, see *Printing from Mac OS*.

Utilities provides instructions for both Windows and Mac OS computers on the following topics:

- Installing Fiery utilities
- Configuring the connection for Fiery utilities
- Using Fiery utilities
- Installing printer and screen fonts (Mac OS only)

Shutting down and restarting the Fiery EXP6000/EXP5000

You may have to shut down the Fiery EXP6000/EXP5000 for service. When you do, network access to the digital press is interrupted. Before you remove or attach any cables to the Fiery EXP6000/EXP5000 to perform service, turn off the Fiery EXP6000/EXP5000.

If necessary, you can restart the Fiery EXP6000/EXP5000. Restarting the Fiery EXP6000/EXP5000 from FieryBar resets the Fiery EXP6000/EXP5000 system software without restarting the system entirely. Rebooting the Fiery EXP6000/EXP5000 from the Windows Start menu restarts the system entirely.

Always use the following procedures when you shut down or restart the Fiery EXP6000/EXP5000. Press the Reset button on the front of the Fiery EXP6000/EXP5000 only if the system is frozen and unresponsive to keyboard or mouse actions.

To SHUT DOWN THE FIERY EXP6000/EXP5000

1 Make sure that the Fiery EXP6000/EXP5000 is not receiving, processing, or printing any files.

Wait until no processing or printing jobs appear in the Command WorkStation Active Jobs window, or FieryBar indicates Idle in the RIPping and Printing areas.

If the system has just finished processing, wait at least five seconds after the system reaches Idle before beginning the shutdown procedure.

NOTE: Before you remove the Fiery EXP6000/EXP5000 from the network, notify the network administrator.

2 Shut down and turn off the digital press.

For instructions, see the documentation that accompanies your digital press.

3 Close all open applications except FieryBar.

4 Choose Shut Down from the Windows Start menu.

5 Select Shut Down and click OK.

Before you access internal components, make sure that all cables are disconnected from the back of the Fiery EXP6000/EXP5000.

TO RESTART THE FIERY EXP6000/EXP5000



To turn the Fiery EXP6000/EXP5000 back on after you turn it off, wait at least 10 seconds.

1 Make sure that the Fiery EXP6000/EXP5000 is not receiving, processing, or printing any files.

Wait until no processing or printing jobs appear in the Command WorkStation Active Jobs window, or FieryBar indicates Idle in the RIPping and Printing areas.

2 Shut down and turn off the digital press.

For instructions, see the documentation that accompanies the digital press.

3 Close all open applications except FieryBar.

4 Right-click FieryBar and choose Restart Fiery from the menu that appears.

A confirmation message appears.

5 Click OK.

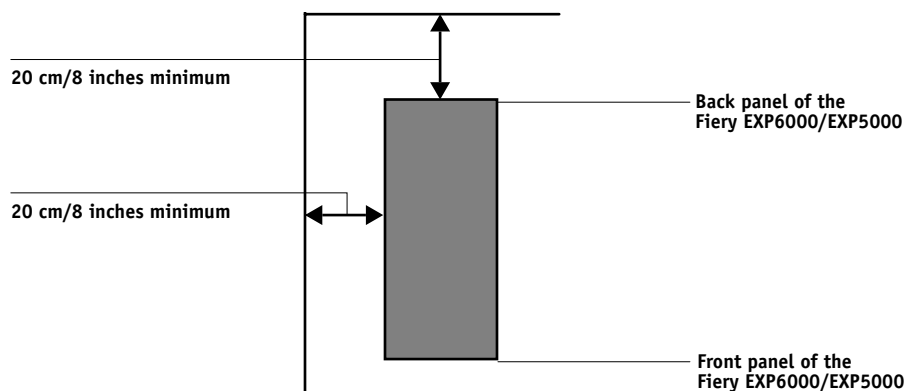
Wait for the Fiery EXP6000/EXP5000 server software to shut down and restart. You may have to wait one minute or more. FieryBar displays an Exited status while the server is restarting.

6 Turn on the digital press.

For instructions, see the documentation that accompanies your digital press.

Space requirements for Fiery EXP6000/EXP5000 installation

Make sure there is enough space near the digital press for Fiery EXP6000/EXP5000 installation at your site. You need a minimum of 8 inches (20cm) at the back and sides of the Fiery EXP6000/EXP5000, as shown in the following illustration.



Safety warnings



The Fiery EXP6000/EXP5000 display window is a liquid crystal display (LCD) that is made of glass and can break. Do not subject it to strong shocks.



If the display window breaks and the liquid crystal material leaks out, do not inhale, ingest, or touch it. If the material gets on your skin or clothing, wash it off with soap and water immediately.

Do not apply excessive pressure to the panel. This changes the color of the panel.

Cleaning the Fiery EXP6000/EXP5000 display window

Clean the Fiery EXP6000/EXP5000 display window with a soft cloth moistened with isopropyl alcohol or ethyl alcohol. Never use water or ketone, as these may permanently alter the display.