

# Getting Started

FIERY X2

**ELECTRONICS FOR IMAGING, INC.**





Copyright © 1998 Electronics for Imaging, Inc. All rights reserved.

This publication is protected by copyright, and all rights are reserved. No part of it may be reproduced or transmitted in any form or by any means for any purpose without express prior written consent from Electronics for Imaging, Inc., except as expressly permitted herein. Information in this document is subject to change without notice and does not represent a commitment on the part of Electronics for Imaging, Inc.

The software described in this publication is furnished under license and may only be used or copied in accordance with the terms of such license.

Patents: 5,666,436; 5,553,200; 5,543,940; 5,537,516; 5,517,334; 5,506,946; 5,424,754; 5,343,311; 5,212,546; 4,941,038; 4,837,722; 4,500,919

#### **Trademarks**

Efi, the Efi logo, Fiery, the Fiery logo, EFICOLOR, and Rip-While-Print are trademarks registered in the U.S. Patent and Trademark Office. Fiery ZX, Fiery X2, Fiery Driven, the Fiery Driven logo, Command WorkStation, AutoCal, Starr Compression, Memory Multiplier, ColorWise, NetWise, and VisualCal are trademarks of Electronics for Imaging, Inc.

All Xerox product names mentioned in this publication are trademarks of the XEROX CORPORATION.

Adobe, the Adobe logo, Adobe Illustrator, PostScript, Adobe Photoshop, Adobe Separator, and Adobe PageMaker are trademarks of Adobe Systems Incorporated, registered in certain jurisdictions. EPS (Encapsulated PostScript) is a trademark of Alsys Corporation. Apple, the Apple logo, AppleShare, AppleTalk, EtherTalk, LaserWriter, and Macintosh are registered trademarks, and MultiFinder is a trademark of Apple Computer, Inc. Microsoft, MS, MS-DOS, and Windows are registered trademarks of Microsoft in the US and other countries. QuarkXPress is a registered trademark of Quark, Inc. Times, Helvetica, and Palatino are trademarks of Linotype AG and/or its subsidiaries. ITC Avant Garde, ITC Bookman, ITC Zapf Chancery, and ITC Zapf Dingbats are registered trademarks of International Typeface Corporation. Ethernet is a registered trademark of Xerox Corporation. Farallon, PhoneNET PC, and PhoneNET Talk are trademarks of Farallon Computing, Inc. COPS and COPSTalk are trademarks of CoOperative Printing Solutions, Inc. NetWare and Novell are registered trademarks and Internetwork Packet Exchange (IPX) is a trademark of Novell, Inc. SyQuest is a registered trademark, in the United States and certain other countries, of SyQuest Technology, Inc. UNIX is a registered trademark of UNIX System Laboratories, a wholly owned subsidiary of Novell, Inc. PANTONE is a registered trademark of Pantone, Inc.

All other terms and product names may be trademarks or registered trademarks of their respective owners, and are hereby acknowledged.

#### **Legal Notices**

**APPLE COMPUTER, INC. ("APPLE") MAKES NO WARRANTIES, EXPRESS OR IMPLIED, INCLUDING WITHOUT LIMITATION THE IMPLIED WARRANTIES OF MERCHANTABILITY AND FITNESS FOR A PARTICULAR PURPOSE, REGARDING THE APPLE SOFTWARE. APPLE DOES NOT WARRANT, GUARANTEE, OR MAKE ANY REPRESENTATIONS REGARDING THE USE OR THE RESULTS OF THE USE OF THE APPLE SOFTWARE IN TERMS OF ITS CORRECTNESS, ACCURACY, RELIABILITY, CURRENTNESS, OR OTHERWISE. THE ENTIRE RISK AS TO THE RESULTS AND PERFORMANCE OF THE APPLE SOFTWARE IS ASSUMED BY YOU. THE EXCLUSION OF IMPLIED WARRANTIES IS NOT PERMITTED BY SOME STATES. THE ABOVE EXCLUSION MAY NOT APPLY TO YOU.**

**IN NO EVENT WILL APPLE, ITS DIRECTORS, OFFICERS, EMPLOYEES OR AGENTS BE LIABLE TO YOU FOR ANY CONSEQUENTIAL, INCIDENTAL OR INDIRECT DAMAGES (INCLUDING DAMAGES FOR LOSS OF BUSINESS PROFITS, BUSINESS INTERRUPTION, LOSS OF BUSINESS INFORMATION, AND THE LIKE) ARISING OUT OF THE USE OR INABILITY TO USE THE APPLE SOFTWARE EVEN IF APPLE HAS BEEN ADVISED OF THE POSSIBILITY OF SUCH DAMAGES. BECAUSE SOME STATES DO NOT ALLOW THE EXCLUSION OR LIMITATION OF LIABILITY FOR CONSEQUENTIAL OR INCIDENTAL DAMAGES, THE ABOVE LIMITATIONS MAY NOT APPLY TO YOU.** Apple's liability to you for actual damages from any cause whatsoever, and regardless of the form of the action (whether in contract, tort [including negligence], product liability or otherwise), will be limited to \$50.

#### **Restricted Rights Legends**

For defense agencies: Restricted Rights Legend. Use, reproduction, or disclosure is subject to restrictions set forth in subparagraph (c)(1)(ii) of the Rights in Technical Data and Computer Software clause at 252.227.7013.

For civilian agencies: Restricted Rights Legend. Use, reproduction, or disclosure is subject to restrictions set forth in subparagraph (a) through (d) of the commercial Computer Software Restricted Rights clause at 52.227-19 and the limitations set forth in Electronics for Imaging, Inc.'s standard commercial agreement for this software. Unpublished rights reserved under the copyright laws of the United States.

**Printed in the United States of America on recycled paper.**

**Part Number:** n/a

**CE Mark**

The CE marking applied to this product symbolises Rank Xerox's declaration of conformity with the following applicable directives of the European Union as of the dates indicated.

January 1, 1996—Council Directive 70/80/CCO amended by Council Directive 93/68/EEO. Approximation of the laws of the member states related to low voltage equipment.

January 1, 1996—Council Directive 59/336/EEC. Approximation of the laws of the member states related to electromagnetic compatibility.

A full declaration defining the relevant directives and referenced standards can be obtained from your Rank Xerox representative.

**WARNING: In order to allow this equipment to operate in proximity to industrial, scientific, and Medical (ISM) equipment, the external radiation from ISM equipment may have to be limited or special migration measures taken.**

**WARNING: This is a Class A product. In a domestic environment this product may cause radio interference, in which case the user may be required to take adequate measures.**

**FCC Information**

WARNING: FCC Regulations state that any unauthorized changes or modifications to this equipment not expressly approved by the manufacturer could void the user's authority to operate this equipment.

NOTE: This equipment has been tested and found to comply with the limits for a Class A digital device, pursuant to Part 15 of the FCC Rules. These limits are designed to provide reasonable protection against harmful interference when the equipment is operated in a commercial environment. This equipment generates, and uses, and can radiate radio frequency energy and, if not installed and used in accordance with the instruction manual, may cause harmful interference to radio communications. Operation of this equipment in a residential area is likely to cause interference in which case the user will be required to correct the interference at his own expense.

**Industry Canada Class A Notice**

This digital apparatus does not exceed the Class A limits for radio noise emissions from digital apparatus as set out in the interference-causing equipment standard entitled, "Digital Apparatus" ICES-003 from Industry Canada.

**Avis de Conformation Classe A d l'Industrie Canada**

Le présent appareil numérique n'émet pas de bruits radioélectriques dépassant les limites applicables aux appareils numériques de la Classe A prescrites dans la norme sur le matériel brouilleur, "Appareils Numériques" NMB-003 édictée par l'Industrie Canada.

**Certificate by Manufacturer/Importer**

This is to certify that the FC07 is shielded against radio interference in accordance with the provisions of VFG 243/1991. The German Postal Services have been advised that this device is being put on the market and that they have been given the right to inspect the series for compliance with the regulations. Electronics for Imaging, Inc.

**Bescheinigung des Herstellers/Importeurs**

Heirmit wird bescheinigt, dass der FC07 im Uebereinstimmung mit den Bestimmungen der VFG 243/1991 Funk-Entstort ist. Der Deutschen Bundespost wurde das Inverkehrbringen dieses Geraetes angezeigt und die Berechtigung zur Ueberpruefung der Serie auf Einhaltung der Bestimmungen eingeräumt. Electronics for Imaging, Inc.

**RFI Compliance Notice**

This equipment has been tested concerning compliance with the relevant RFI protection requirements both individually and on system level (to simulate normal operation conditions). However, it is possible that these RFI Requirements are not met under certain unfavorable conditions in other installations. It is the user who is responsible for compliance of his particular installation.

Dieses Geraet wurde einzeln sowohl als auch in einer Anlage, die einen normalen Anwendungsfall nachbildet, auf die Einhaltung der Funk-entstoerbestimmungen geprueft. Es ist jedoch moeglich, dass die Funk-entstoerbestimmungen unter unguenstigen Umstaenden bei anderen Geraetekombinationen nicht eingehalten werden. Fuer die Einhaltung der Funk-entstoerbestimmungen seigner gesamten Anlage, in der dieses Geraet betrieben wird, ist der Betreiber verantwortlich.

Compliance with applicable regulations depends on the use of shielded cables. It is the user who is responsible for procuring the appropriate cables.

Einhaltung mit betreffenden Bestimmungen kommt darauf an, dass geschirmte Ausführungen gebraucht werden. Fuer die beschaffung richtiger Ausführungen ist der Betreiber verantwortlich.

### **Software License Agreement**

Before using the Software, please carefully read the following terms and conditions. BY USING THIS SOFTWARE, YOU SIGNIFY THAT YOU HAVE ACCEPTED THE TERMS OF THIS AGREEMENT. If you cannot or do not accept these terms, you may return the entire package within ten (10) days to the Distributor or Dealer from which you obtained them for a full refund.

Electronics for Imaging, Inc. grants to you a non-exclusive, non-transferable license to use the software and accompanying documentation ("Software") included with the Fiery X2 you have purchased, including without limitation the PostScript® software provided by Adobe Systems Incorporated.

You may:

- a. use the Software solely for your own customary business purposes and solely with Fiery X2;
- b. use the digitally-encoded machine-readable outline and bitmap programs ("Font Programs") provided with Fiery X2 in a special encrypted format ("Coded Font Programs") to reproduce and display designs, styles, weights, and versions of letters, numerals, characters and symbols ("Typefaces") solely for your own customary business purposes on the display window of the Fiery X2 or monitor used with Fiery X2;
- c. use the trademarks used by Electronics for Imaging to identify the Coded Font Programs and Typefaces reproduced therefrom ("Trademarks"); and
- d. assign your rights under this Agreement to a transferee of all of your right, title and interest in and to Fiery X2 provided the transferee agrees to be bound by all of the terms and conditions of this Agreement.

You may not:

- a. make use of the Software, directly or indirectly, to print bitmap images with print resolutions of 600 dots per inch or greater, or to generate fonts or typefaces for use other than with Fiery X2;
- b. make or have made, or permit to be made, any copies of the Software, Coded Font Programs, accompanying documentation or portions thereof, except as necessary for use with the Fiery X2 unit purchased by you; provided, however, that under no circumstances may you make or have made, or permit to be made, any copies of that certain portion of the Software which has been included on the Fiery X2 hard disk drive. You may not copy the documentation;
- c. attempt to alter, disassemble, decrypt or reverse engineer the Software, Coded Font Programs or accompanying documentation.
- d. rent or lease the Software.

### **Proprietary Rights**

You acknowledge that the Software, Coded Font Programs, Typefaces, Trademarks and accompanying documentation are proprietary to Electronics for Imaging and its suppliers and that title and other intellectual property rights therein remain with Electronics for Imaging and its suppliers. Except as stated above, this Agreement does not grant you any right to patents, copyrights, trade secrets, trademarks (whether registered or unregistered), or any other rights, franchises or licenses in respect of the Software, Coded Font Programs, Typefaces, Trademarks or accompanying documentation. You may not adapt or use any trademark or trade name which is likely to be similar to or confusing with that of Electronics for Imaging or any of its suppliers or take any other action which impairs or reduces the trademark rights of Electronics for Imaging or its suppliers. The trademarks may only be used to identify printed output produced by the Coded Font Programs. At the reasonable request of Electronics for Imaging, you must supply samples of any Typeface identified with a trademark.

### **Confidentiality**

You agree to hold the Software and Coded Font Programs in confidence, disclosing the Software and Coded Font Programs only to authorized users having a need to use the Software and Coded Font Programs as permitted by this Agreement and to take all reasonable precautions to prevent disclosure to other parties.

### **Remedies**

Unauthorized use, copying or disclosure of the Software, Coded Font Programs, Typefaces, Trademarks or accompanying documentation will result in automatic termination of this license and will make available to Electronics for Imaging other legal remedies.

### **Limited Warranty And Disclaimer**

Electronics for Imaging warrants that, for a period of ninety (90) days from the date of delivery to you, the Software under normal use will perform without significant errors that make it unusable. Electronics for Imaging's entire liability and your exclusive remedy under this warranty (which is subject to you returning Fiery X2 to Electronics for Imaging or an authorized dealer) will be, at Electronics for Imaging's option, to use reasonable commercial efforts to attempt to correct or work around errors, to replace the Software with functionally equivalent software, or to refund the purchase price and terminate this Agreement. Some states do not allow limitations on duration of implied warranty, so the above limitation may not apply to you.

Except for the above express limited warranty, Electronics for Imaging makes and you receive no warranties or conditions on the Products, express, implied, or statutory, and Electronics for Imaging specifically disclaims any implied warranty or condition of merchantability or fitness for a particular purpose.

For warranty service, please contact your authorized service/support center.

EXCEPT FOR THE ABOVE EXPRESS LIMITED WARRANTY, ELECTRONICS FOR IMAGING MAKES AND YOU RECEIVE NO WARRANTIES OR CONDITIONS ON THE SOFTWARE OR CODED FONT PROGRAMS, EXPRESS, IMPLIED, STATUTORY, OR IN ANY OTHER PROVISION OF THIS AGREEMENT OR COMMUNICATION WITH YOU, AND ELECTRONICS FOR IMAGING SPECIFICALLY DISCLAIMS ANY IMPLIED WARRANTY OR CONDITION OF MERCHANTABILITY OR FITNESS FOR A PARTICULAR PURPOSE. Electronics for Imaging does not warrant that the operation of the software will be uninterrupted or error free or that the Software will meet your specific requirements.

#### **Limitation Of Liability**

IN NO EVENT WILL ELECTRONICS FOR IMAGING OR ITS SUPPLIERS BE LIABLE FOR ANY DAMAGES, INCLUDING LOSS OF DATA, LOST PROFITS, COST OF COVER OR OTHER SPECIAL, INCIDENTAL, CONSEQUENTIAL OR INDIRECT DAMAGES ARISING FROM THE USE OF THE SOFTWARE, CODED FONT PROGRAMS OR ACCOMPANYING DOCUMENTATION, HOWEVER CAUSED AND ON ANY THEORY OF LIABILITY. THIS LIMITATION WILL APPLY EVEN IF ELECTRONICS FOR IMAGING OR ANY AUTHORIZED DEALER HAS BEEN ADVISED OF THE POSSIBILITY OF SUCH DAMAGE. YOU ACKNOWLEDGE THAT THE PRICE OF THE UNIT REFLECTS THIS ALLOCATION OF RISK. BECAUSE SOME STATES/JURISDICTIONS DO NOT ALLOW THE EXCLUSION OR LIMITATION OF LIABILITY FOR CONSEQUENTIAL OR INCIDENTAL DAMAGES, THE ABOVE LIMITATION MAY NOT APPLY TO YOU.

#### **Export Controls**

You agree that you will not export or re-export the Software or Coded Font Programs in any form without the appropriate United States and foreign government licenses. Your failure to comply with this provision is a material breach of this Agreement.

#### **Government Use**

Use, duplication or disclosure of the Software by the United States Government is subject to restrictions as set forth in subdivision (c) (1) (ii) of the Rights in Technical Data and Computer Software clause at DFARS 252.227-7013 or in subparagraphs (c) (1) and (2) of the Commercial Computer Software—Restricted Right Clause at 48 CFR 52.227-19, as applicable.

#### **Third Party Beneficiary**

You are hereby notified that Adobe Systems Incorporated, a California corporation located at 345 Park Avenue, San Jose, CA 95110-2704 ("Adobe") is a third-party beneficiary to this Agreement to the extent that this Agreement contains provisions which relate to your use of the Fonts, the Coded Font Programs, the Typefaces and the Trademarks licensed hereby. Such provisions are made expressly for the benefit of Adobe and are enforceable by Adobe in addition to Electronics for Imaging.

#### **General**

This Agreement will be governed by the laws of the State of California.

This Agreement is the entire agreement held between us and supersedes any other communications or advertising with respect to the Software, Coded Font Programs and accompanying documentation.

If any provision of this Agreement is held invalid, the remainder of this Agreement shall continue in full force and effect.

If you have any questions concerning this Agreement, please write to Electronics for Imaging, Inc., Attn: Licensing Dept. or see Electronics for Imaging's web site at [www.efi.com](http://www.efi.com).

Electronics for Imaging, Inc.  
2855 Campus Drive  
San Mateo, CA 94403







# Contents

## Introduction

---

About the documentation	xii
Specifications	xiii
User software	xiii
System requirements	xiv
Windows	xiv
Mac OS	xv
UNIX (TCP/IP)	xvi
Parallel port	xvi
IPX (Novell)	xvii

## Installing User Software on a Windows Computer

---

Installing Windows software	1
Downloading printer files with the Installer WebTool	2
Setting up the Fiery X2 as a PostScript printer	2
Setting up PostScript printing with Windows 95	3
Setting up PostScript printing with Windows 3.1x	17
Setting up PostScript printing with Windows NT 4.0	21
Installing Fiery X2 software	33
Fiery Downloader and Fiery Print Calibrator	33
Fiery Spooler	35
Fiery Scan	36
Using the software for the first time	37
Configuring the connection to the server	37
Configuring the connection for Fiery Spooler	40
Copying color files from the User Software CD	42
Installing the Fiery X2 ICM printer profile for Windows 95	44
Installing files for Adobe Photoshop	44

## Installing User Software on a Mac OS Computer

---

Installing Mac OS software	49
Downloading printer files with the Installer WebTool	50
Setting up PostScript printing with Mac OS	50
Setting up the Fiery X2 in the Chooser	51
Installing Fiery X2 software and fonts	53
Screen fonts	56
Copying color files from the User Software CD	57
Installing files for Adobe Photoshop	58

## Downloading Installers with Fiery WebTools

---

Setting up Fiery WebTools	63
Using the Installer WebTool	64

## Troubleshooting

---

On a Windows computer	67
Setting up IPX (Novell) printing for Windows NT Workstation	67
Installing the Adobe PostScript Printer Driver	67
Problems with the Fiery utilities on Windows 95 or Windows NT	67
On a Mac OS computer	68
Setting up the Fiery X2 in the Chooser	68
Installing screen fonts	68

## Index

## Introduction

This manual describes how to install the user software for the Fiery X2 Color Server™ and set up printing from Windows and Mac OS computers. For information about setting up network servers and clients to use the Fiery X2 Color Server, see the *Administrator Guide*. For general information on using the color copier, your computer, your application software, or your network, see the manuals that accompany those products.

**NOTE:** The term “Fiery X2” is used to refer to the Fiery X2 Color Server.

The Fiery X2 supports Empress (5750), Regal (5790), and Countess (5799) digital copier printers.

Your Fiery X2 includes a media pack containing the following:

- User Software CD
- System Software CD
- User Documentation CD
- Kodak Gray Scale package
- Printed Release Notes (described below)
- Quick Start Notes

## About the documentation

This manual is part of the set of Fiery X2 documentation, which includes the following manuals for users and system administrators:

- The *Administrator Guide* explains basic configuration and administration of the Fiery X2 for the supported platforms and network environments. It also includes guidelines for setting up UNIX, Windows NT, and Novell NetWare servers to provide Adobe PostScript printing services to clients.
- *Getting Started* describes how to install software to enable users to print to the Fiery X2. Specifically, it describes installation of PostScript printer drivers, printer description files, and other software provided on the User Software CD. It also explains how to connect each user to the network.

- The *User Guide* describes the printing features of the Fiery X2 for users who send jobs via remote workstations on the network or via a direct parallel port connection. It also explains how to use the Fiery WebTools and Fiery X2 client utilities to manage jobs and maintain color quality, and provides troubleshooting information for problems that may arise.
- *Release Notes* provide last-minute product information and workarounds for some of the problems you may encounter.

## Specifications

The Fiery X2 has the following features:

- MIPS R5000, 200 MHz CPU
- 160MB RAM
- Internal 2GB hard disk drive
- External CD-ROM drive (available as an optional kit)
- SCSI port
- Supports AppleTalk, TCP/IP, and IPX protocols simultaneously
- Supports parallel port communication
- Supports thinnet (thin coaxial Ethernet cable or 10Base2), thicknet (thick coaxial Ethernet cable or 10Base5), and unshielded twisted pair (Fast Ethernet 100BaseTX or Ethernet 10BaseT)
- Supports Token Ring networking (available as an optional kit)
- Supports Adobe PostScript 3
- Includes 136 fonts (117 Adobe Type 1 PostScript and 19 TrueType)

In addition, two Adobe Multiple Master fonts are included and are used for font substitution in PDF files.

- Built-in ColorWise™ color management and NetWise™ networking features
- Fiery WebTools™
- Fiery Downloader™, Fiery Print Calibrator™, and Fiery Spooler™ client utilities
- Fiery Scan™ plug-in

## User software

The full set of Fiery X2 user software is provided on the User Software CD. Installers for the printer files can also be downloaded with the Installer WebTool.

Adobe PostScript Printer Driver	Enables you to print to the Fiery X2 from Windows 3.1x, Windows 95, and Mac OS computers; supports special Fiery X2 and PostScript 3 features.
PostScript Printer Description files (PPDs)	Files for use with the PostScript printer driver; they allow the Fiery X2 to appear in popular applications' Print and Page Setup dialog boxes. The Fiery X2 PPDs provide information about the Fiery X2 and your particular copier model to the application and printer driver you are using.
PostScript Screen Fonts	Screen fonts for the 136 PostScript printer fonts installed on the Fiery X2 (117 Adobe Type 1 and 19 TrueType). See Appendix B of the <i>User Guide</i> for a complete list.
Fiery Downloader	Enables you to print PostScript files, Encapsulated PostScript (EPS) files, and Portable Document Format (PDF) files directly to the Fiery X2 without opening the application in which they were created. Fiery Downloader also enables you to manage the printer fonts installed on the Fiery X2.
Fiery Print Calibrator	Enables you to calibrate the Fiery X2 remotely from your computer. Proper calibration keeps color consistent across time.
Fiery Spooler	Enables you to view the order and priority of print jobs, customize printer settings for jobs, delete jobs, and move jobs between queues. You can also use it to view job accounting information.
Fiery Scan plug-in	A TWAIN plug-in module for Photoshop that enables you to scan images from the copier directly into Photoshop.

Color management files	ColorSync and ICM color management files that enable you to maintain consistent color from your original artwork to the colors displayed on your monitor to the printed output.
Color reference files	Reference pages that you can print to view the range of colors available on your Fiery X2. For the most predictable color results, refer to these pages when defining colors in applications.

## System requirements

To install the Fiery X2 user software on a Windows or Mac OS computer, the computer must be equipped with a built-in or external CD-ROM drive.

### Windows

To print to the Fiery X2, you need:

- A Windows-based computer with an 80486, AMD, or Pentium processor
- Windows 95, Windows 3.1x, or Windows NT 4.0
- At least 4MB of RAM

To use Fiery utilities (Fiery Downloader, Fiery Print Calibrator, and Fiery Spooler) you also need:

- *Either* Windows 95 *or* Windows NT 4.0 with NT Service Pack 3
- At least 16MB of RAM

To use Fiery Scan, you also need Adobe Photoshop version 2.5 or later.

To use Fiery WebTools, you also need:

- *Either* Netscape Communicator v4.0.4 with Java enabled *or* Microsoft Internet Explorer v3.0.2 with Java enabled

NOTE: Netscape and Microsoft continue to release frequent updates to their browsers. As support cannot be guaranteed for all versions, use the versions specified above for best results.

- A monitor that supports 16-bit color at a minimum resolution of 800 × 600
- A TCP/IP enabled network and the IP address or DNS name of the Fiery X2
- Web Services enabled on the Fiery X2

NOTE: Fiery utilities and Fiery WebTools are not supported with Windows 3.1x.

With Microsoft Windows 95, you also need:

- IPX/SPX or TCP/IP networking protocol installed

NOTE: You must have TCP/IP networking protocol installed in order to use Fiery Spooler; Fiery Spooler is not supported over IPX/SPX.

- Adobe PostScript Printer Driver for Windows version 4.2 or later (version 4.2.2 is included with the user software)

With Microsoft Windows 3.1x, you also need:

- IPX networking protocol installed
- IPX/SPX networking software for IPX/SPX communication
- MS-DOS version 5.0 or later
- Adobe PostScript Printer Driver for Windows version 3.0 or later (version 3.0.1 is included with the user software)

With Microsoft Windows NT 4.0 you also need:

- TCP/IP or AppleTalk networking protocol installed
- The Windows PostScript Printer Driver that came with your Windows NT 4.0 system software; however, some Fiery X2 printing features may not be available. For details, see the *User Guide*.

## Mac OS

To print to the Fiery X2, you need:

- A Mac OS-based computer
- At least 8MB of RAM
- EtherTalk installed

- Apple System software version 7.5 or later
- Adobe PostScript Printer Driver version 8.5 or later (version 8.5.1 is included with the user software)

To use the Fiery utilities (Fiery Downloader, Fiery Print Calibrator, and Fiery Spooler), you also need:

- A Power Macintosh computer
- At least 16MB of RAM

To use Fiery Scan, you also need Adobe Photoshop version 2.5 or later.

To use Fiery WebTools, you also need:

- Netscape Communicator v4.0.4 with Java enabled

NOTE: Netscape continues to release frequent updates to its browser. As support cannot be guaranteed for all versions, use the version specified above for best results.

- A TCP/IP enabled network and the IP address or DNS name of the Fiery X2
- Web Services enabled on the Fiery X2

## UNIX (TCP/IP)

To print to the Fiery X2 with a UNIX workstation, you need:

- A workstation with standard TCP/IP connectivity (for example, Sun SPARCstation or Silicon Graphics workstation with Solaris version 2.x or SunOS version 4.1.x software)
- TCP/IP printing software that conforms to RFC1179 (Berkeley lpd protocol)

## Parallel port

To print to the Fiery X2 using the parallel port, you need:

- A Windows-based computer with an 80486, AMD, or Pentium processor
- At least 4MB of RAM



- The parallel cable included with the Fiery X2

The cable has a DB-25 male connector (that connects to the computer) on one end and a DB-25 female connector (that connects to the Fiery X2) on the other.

### **IPX (Novell)**

To use the Fiery X2 with an IPX (Novell) network, you need:

- A Novell server
- Novell NetWare software version 4.x or 3.x
- Support for Ethernet SNAP, Ethernet II, Ethernet 802.3, Ethernet 802.2, Token Ring SNAP, or Token Ring



## Installing User Software on a Windows Computer

This chapter describes installing software and setting up printing from a Windows-based computer running Windows 95, Windows 3.1x, or Windows NT 4.0.

The general steps for installing the Fiery X2 software are:

- Install the Adobe PostScript printer driver (Windows 95 and Windows 3.1x) or Windows PostScript printer driver (Windows NT 4.0) and PostScript Printer Description files (PPDs) (for all Windows systems).
- Set up the printer driver to communicate with the Fiery X2.
- Install the Fiery utilities (Fiery Downloader, Fiery Print Calibrator, and Fiery Spooler) and Fiery Scan plug-in (Windows 95 and Windows NT 4.0 only).
- Configure the connection for Fiery Downloader, Fiery Print Calibrator, and Fiery Scan.
- Configure the connection for Fiery Spooler.
- Copy additional color reference and application files from the User Software CD as needed.

## Installing Windows software

The Instalrs folder on the User Software CD contains the following installer folders:

- Calib—Fiery Print Calibrator installer
- Download—Fiery Downloader installer
- PS\_drvr—Adobe PostScript printer driver installers for Windows 95 and Windows 3.1x, and Fiery X2 PPD files for all supported Windows systems
- Scan—TWAIN module installer, which enables you to use the Fiery Scan plug-in for Adobe Photoshop
- Spooler—Fiery Spooler installer

In addition, the User Software CD includes various color files. These files must be copied or installed from the CD and placed in the appropriate locations on your hard disk (see “Copying color files from the User Software CD” on page 42):

- ICM printer profile
- Separation Tables and a monitor settings file for use with Adobe Photoshop
- PostScript CMYK reference file
- PostScript PANTONE Coated Color Reference file
- RGB color reference files for specifying colors from Microsoft Word and PowerPoint

### **Downloading printer files with the Installer WebTool**

Installers for the Fiery X2 printer files can be downloaded from the Fiery X2 with the Installer WebTool (if the site administrator has enabled Internet access to the Fiery X2). For instructions, see “Using the Installer WebTool” on page 64.

Once you download the installers, the installation process is identical to installing from the User Software CD.

### **Setting up the Fiery X2 as a PostScript printer**

To set up the Fiery X2 as a PostScript printer, you need a PostScript printer driver and the appropriate Fiery X2 PPD file.

- For Windows 95 or Windows 3.1x, install the appropriate Adobe PostScript printer driver, included with the Fiery X2 user software. Both drivers are capable of providing access to all Fiery X2 features; in addition, the Adobe PostScript printer driver for Windows 95 supports PostScript 3.
- For Windows NT 4.0 systems, install the printer driver that came with your Windows system software. This driver may not support all Fiery X2 features.

The following procedures are specific to each version of Windows.

## Setting up PostScript printing with Windows 95

You can use the following procedure whether you are installing from the User Software CD or with installer files downloaded using the Installer WebTool.

**NOTE:** If you have problems setting up the Fiery X2, install another PostScript printer such as the Apple LaserWriter, and then install the Fiery X2.

---

### TO INSTALL THE ADOBE POSTSCRIPT PRINTER DRIVER FOR WINDOWS 95:

1. If you are installing from the CD, insert it into the CD-ROM drive and double-click the icon of the CD.

If you are installing from the files you downloaded using the Installer WebTool, double-click the icon of your hard disk drive.

2. If you are installing from the CD, open the English\Instalrs\P\_s\_drvr folders.

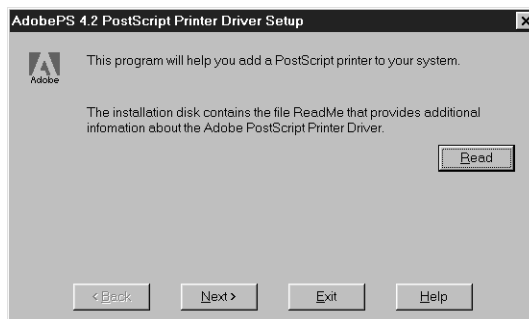
If you are installing from the files you downloaded using the Installer WebTool, open the Prntdrv\P\_s\_drvr folders on your hard disk.

3. Open the Win\_95 folder, and double-click the Setup.exe icon.

4. Read the End User License Agreement. If you agree with the terms and conditions of the agreement, click Accept.

You must click Accept before setup can continue. If you click Decline, you are prompted to either continue with setup or exit.

5. Click Read to view the README file. When you are finished, close the README file and click Next.



## 4 Installing User Software on a Windows Computer

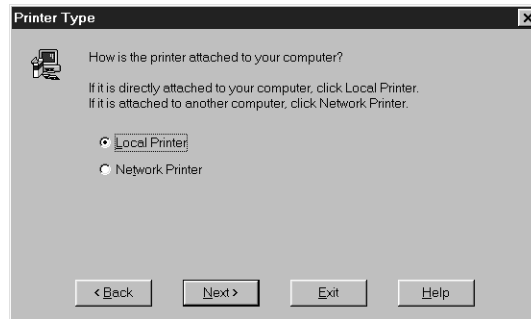
The information in this file is not specific to your Fiery X2. You can click Next to postpone reading this file and read it later.

6. If you are installing from the CD, you may see an Install Setup Program dialog box offering you the option to copy the setup program to your hard disk. Make your choice and then click Next.

Some printer files are installed to your hard disk.

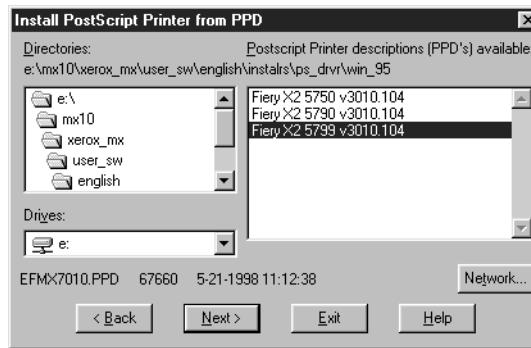
7. In the Printer Type dialog box, select Local Printer and click Next.

This is a general installation. You can modify the attachment later, according to your network type.



8. If you are installing from the CD, in the Directories box, open the English\Instalrs\Ps\_drvr\Win\_95 folders.

If you are installing from the installer files you downloaded with the Installer WebTool, in the Directories box, open the Prntdrv\Ps\_drvr\Win\_95 folders.



## 5 Setting up the Fiery X2 as a PostScript printer

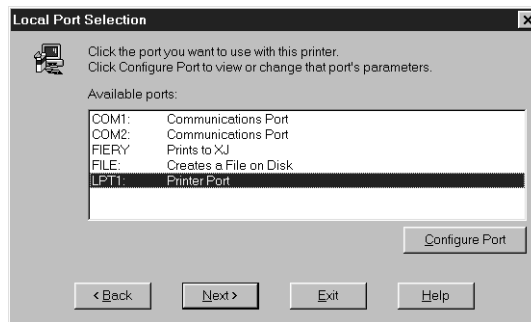
9. The Fiery X2 PPD appear in the Postscript Printer descriptions (PPDs) available box. Select the Fiery X2 PPD file for your copier and click Next.

For the 5750, select Fiery X2 5750 v3010.104.

For the 5790, select Fiery X2 5790 v3010.104.

For the 5799, select Fiery X2 5799 v3010.104.

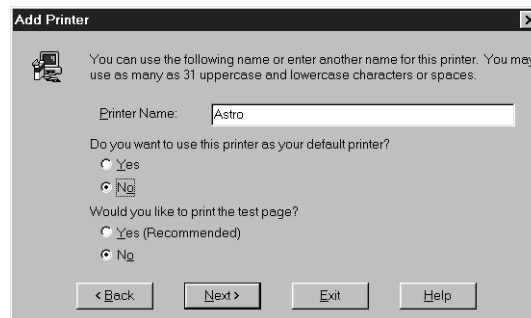
10. In the Available ports box, select the LPT1 port and click Next.  
You will configure the port later, according to your network type.



11. Using a maximum of 20 characters, enter a name for the Fiery X2 (or leave the default name) in the Printer Name box.

This name will be used in the Printers and queue windows.

**NOTE:** Entering more than 20 characters may cause printing problems with some network applications.



12. If you want the Fiery X2 to be the default printer select Yes; if not, select No.

13. Select **No** to printing the test page and click **Next**.

You will print the test page after you finish configuring the printer.

The necessary files are installed to your hard disk. When installation is complete, the Properties dialog box appears.

14. Click **OK**.

You are notified that Setup is complete.

15. Click **Exit**.

The icon for your newly installed printer appears in the Printers window.

You are ready for the instructions for connecting to your network type (see “Completing the Windows 95 connection” below).

### Completing the Windows 95 connection

To print from Windows 95 you need to:

- Set up network servers, if any
- Set up the Fiery X2 to accept print jobs from your computer
- Configure a port on each Windows 95 computer for the network or connection type

For this type of connection:	See:
Parallel	below
IPX/SPX	page 10
IPX (Novell)	page 12
SMB printing	page 13

### Completing the Windows 95 parallel port connection

Preparing a parallel port connection for Windows 95 requires specific BIOS settings on your computer, and specific port and printer settings for Windows 95. In addition, a change to one of the Fiery X2 Setup settings may be required if you choose to spool files to the Fiery X2 rather than print directly.



---

TO PREPARE THE FIERY X2 AND YOUR COMPUTER FOR PARALLEL PORT PRINTING:

1. Connect the Fiery X2 to the parallel port on your computer.  
For instructions, see the *Administrator Guide*.
2. In Network Setup>Port Setup>Parallel Port Setup, set Enable Parallel Port to Yes.  
For more information about Fiery X2 Setup, see the *Administrator Guide*.
3. If you want to spool files to the Fiery X2, set Port Timeout in Seconds to 10.  
If you want to print directly to the Fiery X2, set Port Timeout in Seconds to 5.  
Setting this option to 10 seconds ensures that spooling is not interrupted due to timeout.
4. In your computer's BIOS settings, set Parallel Port Mode to ECP.  
To access the BIOS settings, restart the computer and press the key indicated on your monitor as soon as the computer starts up. You may have to scroll through several screens to reach the parallel port settings. After setting the Parallel Port Mode to ECP, save your changed setting and exit.

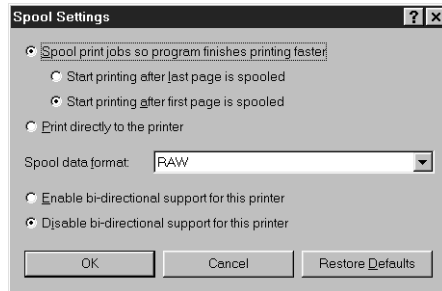
---

TO PREPARE THE PRINTER FOR PARALLEL PORT PRINTING:

1. Click the Start button, point to Settings, and click Printers.
2. Click the Fiery X2 printer icon and choose Properties from the File menu.
3. Click the Details tab, and in the "Print to the following port" menu, select LPT 1: (ECP Printer Port).  

NOTE: Check this selection carefully. It may read LPT 1: (Printer Port), which is *not* equivalent to LPT 1: (ECP Printer Port).

If this box does *not* read LPT 1: (ECP Printer Port), change the port setting now, as described in "To prepare the port for parallel port printing:" on page 8, and then return to this procedure. You may need your Windows 95 system CD.
4. If you changed the selection in the "Print to the following port" menu, click Apply.  
A Warning dialog box may appear, stating that fonts you downloaded to the previously selected port may be lost; click OK.

5. Click **Spool Settings**.

## 6. Select either “Spool print jobs so program finishes printing faster” or “Print directly to the printer.”

The selection you make depends on the action you took in step 3 on page 7:

- If you set the Port Timeout in Seconds to 10, you can select either option; however, spooling is faster.
- If you set the Port Timeout in Seconds to 5, select “Print directly to the printer.”

7. Select “Disable bi-directional support for this printer” and click **OK**.8. Click **Apply**.

You are now ready to print from your applications to the Fiery X2 with the parallel port. To confirm the connection, print a Windows 95 test page.

9. Click the **General** tab.10. Click **Print Test Page** and click **OK**.

Perform the following procedure only if the LPT 1 port is *not* currently set to ECP Printer Port.

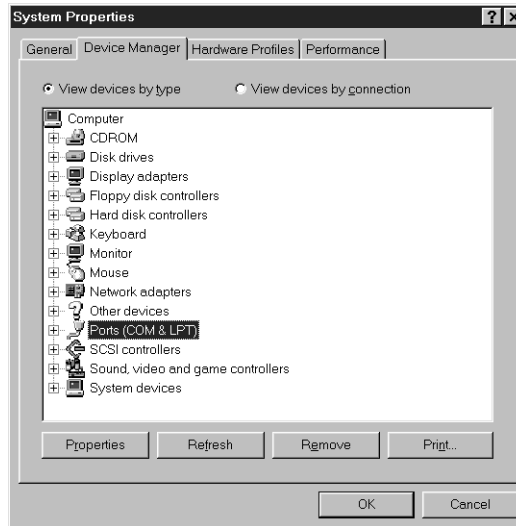
---

**TO PREPARE THE PORT FOR PARALLEL PORT PRINTING:**

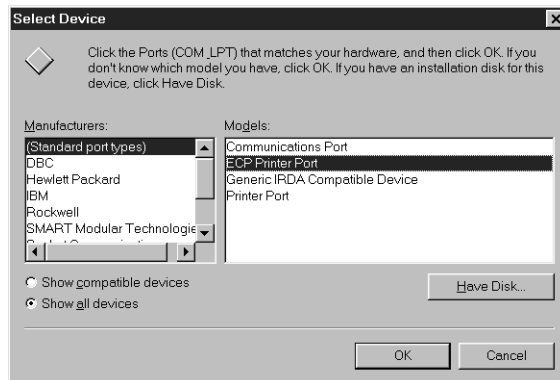
1. Click the Start button, point to Settings, and click Control Panel.
2. Double-click System.  
The System Properties window appears.

## 9 Setting up the Fiery X2 as a PostScript printer

3. Click the Device Manager tab.
4. Double-click Ports.



5. Double-click the port with (LPT1) in its name.
6. In the (LPT1) Properties dialog box click the Driver tab and then click Change Driver.
7. Select Show all devices.
8. From the Manufacturers list, select "(Standard port types)." From the Models list, select "ECP Printer Port" (*not* Printer Port). Click OK.



9. Click OK in the (LPT1) Properties dialog box.

NOTE: You might need to insert the Windows 95 system CD to complete this step depending on whether the required files are on your hard disk.

10. When prompted to restart the computer, click Yes.

After Windows 95 restarts, you can complete the procedure described in “To prepare the printer for parallel port printing:” on page 7.

### Completing the Windows 95 IPX/SPX or IPX (Novell) connection

If you are printing through a Novell server, the Novell network and file server should be set up before you begin. The file server should be configured with a print server and print connection for the Fiery X2. For details see your NetWare documentation and the *Administrator Guide*.

You can also use Fiery Downloader to print directly to the Fiery X2 from Windows 95 with IPX/SPX.

---

#### TO SET UP IPX/SPX PRINTING:

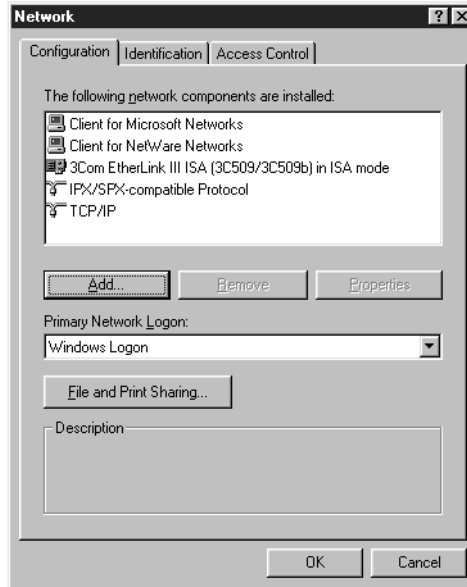
1. Open the Windows 95 Control Panel.
2. Double-click the Network icon.

Make sure that IPX/SPX-compatible Protocol and TCP/IP protocol are both listed in the Installed Network Components section.

For instructions, see your Windows 95 documentation.

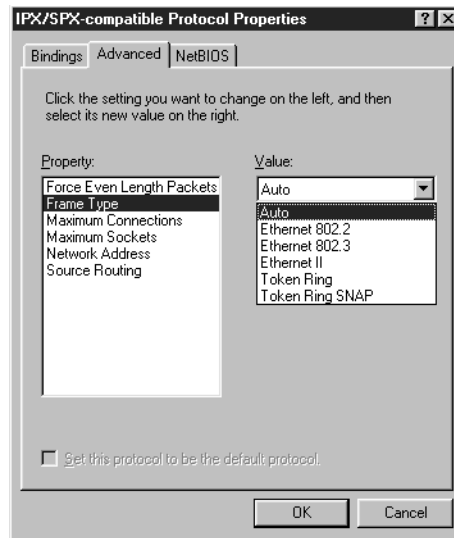
NOTE: You must enable TCP/IP printing to ensure that all files required for IPX/SPX will be installed. You can select it and click Remove after you set up IPX/SPX if you do not need to use the TCP/IP protocol.

3. Double-click the IPX/SPX-compatible Protocol icon.



4. Click the Advanced tab.
5. In the Property list, click Frame Type. In the Value pop-up menu, select the Frame Type that corresponds to the one set during Fiery X2 Network Setup.  
If necessary, print the Configuration page from the Control Panel to check which Frame Type(s) are configured.

**NOTE:** Do not select Auto. Doing so may not select the Frame Type specified on the Fiery X2.



6. Click OK and close the Network Control Panel.

---

#### TO SET UP IPX (NOVELL) PRINTING WITH WINDOWS 95:

1. Click the Start button, choose Settings, and then choose Printers.
2. Click the Fiery X2 icon, and choose Properties from the File menu (or right-click the icon and left-click Properties).
3. Click the Details tab and click Add Port.  
A list of connection options is displayed.
4. In the Add Port dialog box, specify the network path, or click Browse for a display of your network environment.
5. If you are using a NetWare file server, double-click the icon of the NetWare file server you want to use for printing to the Fiery X2 and click OK.
6. Click the printer icon labeled with the NetWare print queue you will use and click OK.

7. In the Add Port dialog box, verify that the network path is updated and click OK.  
You are ready to print from the workstation. Your print jobs will be sent to the specified print queue on the Novell file server. The Fiery X2 polls the file server and if jobs are present, they are sent to the Fiery X2.  
To confirm the connection, you can print a Windows 95 test page.
8. Click the General tab, and click Print Test Page.
9. Click OK.
10. The Job Notes window appears. Enter user and job identification information for accounting purposes, or whatever information is required at your site, and click OK.

### Completing the SMB printing connection

If you don't have a Novell network, you can print via SMB printing (also known as Windows printing or WINS printing). Printing by this method allows you to print from your computer to a particular print connection (Hold, Print, or Direct) on the Fiery X2.

To set up printing to a second or third print connection, you must install a new printer for each connection and repeat the procedure "To set up SMB printing:" on page 15. If you install more than one printer, give each a descriptive name during printer driver installation, such as Astro-Print or Astro-Hold, so you can easily identify printers.

---

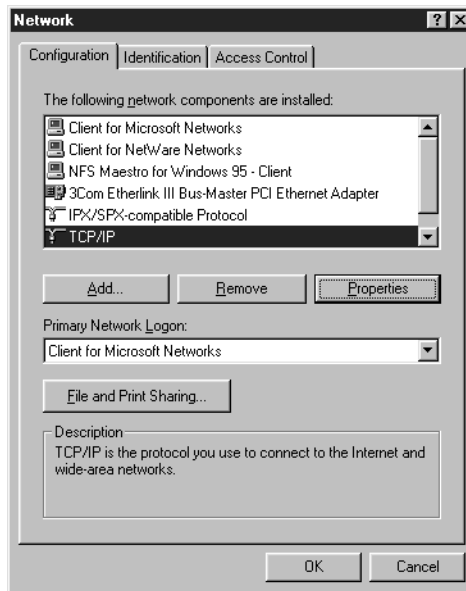
#### BEFORE YOU BEGIN:

1. Configure the Fiery X2 for SMB printing in Network Setup>Service Setup>Windows Setup.  
SMB printing is referred to as Windows Printing in Setup, on the Control Panel Map, and on the Configuration page. For more information, see the *Administrator Guide*.
2. Print the Fiery X2 Configuration page.  
You need information from the Configuration page to specify settings on your computer, such as the Server Name and IP address of the WINS Name Server.
3. Save any documents in open programs.  
You are prompted to restart Windows after this procedure, so be sure to save any documents.

---

**TO PREPARE YOUR COMPUTER FOR SMB PRINTING:**

1. Click Start, choose Settings, and click Control Panel.
2. Double-click the Network icon.
3. Select TCP/IP and click Properties.

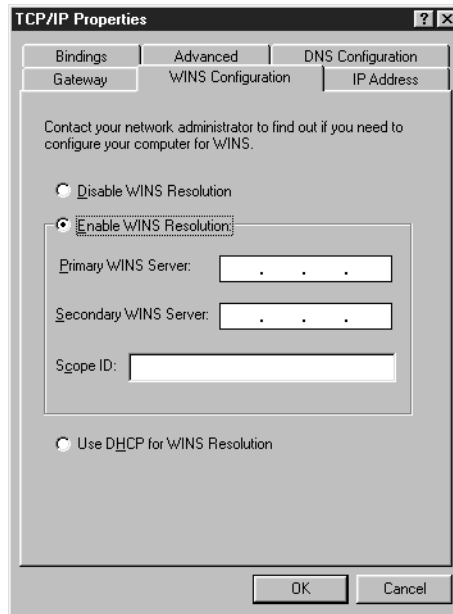


4. Click the WINS Configuration tab.



5. Select “Enable WINS Resolution” and enter the TCP/IP address of the WINS Name Server.

The TCP/IP address of the WINS Name Server is listed on the Configuration Page in the Network Setup section.



6. Click OK, and click OK at the Network dialog box.

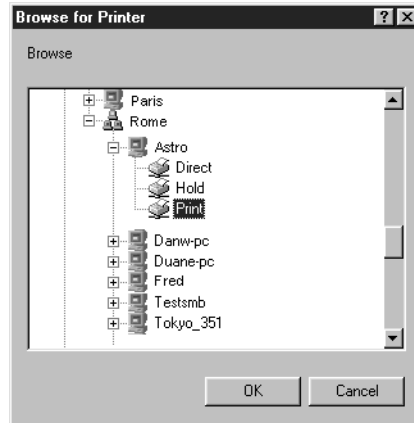
You are prompted to restart Windows. Click Yes, and when Windows restarts, continue with the following procedure.

---

#### TO SET UP SMB PRINTING:

1. Click the Start button, choose Settings, and click Printers.
2. Click the icon for the printer and choose Properties from the File menu.
3. Click the Details tab in the Properties window and click Add Port.  
A list of connection options is displayed.
4. In the Add Port dialog box, click Browse to display your network environment.

5. Expand the levels to locate your printer and the print connection (Print, Hold, or Direct) to which you want to print.



The printer name you are browsing for is the Server Name listed under Network Setup on the Configuration Page. This name may not be the same as the Server Name listed under Server Setup on the Configuration Page (which is the name displayed on the Control Panel).

The network environment and the amount of network traffic determines the amount of time required for the Browse function.

6. Select the print connection under the printer and click OK.
  7. In the Add Port dialog box, verify that the network path is correct and click OK.
  8. To confirm the connection, click the General tab in the Properties dialog box.
  9. Click Print Test Page, and click OK.
  10. The Job Notes window appears. Enter user and job identification information for accounting purposes, or whatever information is required at your site, and click OK.
- If the test page prints successfully, you are ready to print from the computer.

## Setting up PostScript printing with Windows 3.1x

You can use the following procedure whether you are installing from the User Software CD or with installer files downloaded using the Installer WebTool.

---

### TO INSTALL THE FIERY X2 PPD FILE FOR WINDOWS 3.1X:

1. In the Main window, double-click the Control Panel icon.
2. Double-click the Adobe PostScript Printers icon.  
The Install PostScript Printer from PPD dialog box appears.  
**NOTE:** If there is no Adobe PostScript Printers icon in the Control Panel window, you need to install the Adobe PostScript printer driver from the User Software CD. Proceed to the procedure “To install the Adobe PostScript printer driver for Windows 3.1x:” on page 18.
3. If you are installing from the CD, in the Drives box, select the drive containing the CD.  
If you are installing from the installer files you downloaded with the Installer WebTool, in the Drives box, select your hard disk drive.
4. If you are installing from the CD, in the Directories box, double-click to open the English\Instalrs\Ps\_drvr\Win\_31 folders.  
If you are installing from the installer files you downloaded with the Installer WebTool, in the Directories box, double-click to open the Prntdrv\Ps\_drvr\Win\_31 folders.
5. Select the appropriate Fiery X2 PPD from the Printer Descriptions available box and click Install.  
For the 5750, select Fiery X2 5750 v3010.104.  
For the 5790, select Fiery X2 5790 v3010.104.  
For the 5799, select Fiery X2 5799 v3010.104.
6. Click OK when you are notified that the printer was successfully installed.

---

**TO INSTALL THE ADOBE POSTSCRIPT PRINTER DRIVER FOR WINDOWS 3.1X:**

1. Exit all applications and close all windows.
2. Insert the User Software CD into the CD-ROM drive.
3. In the Windows Program Manager, choose Run from the File menu, and then click Browse.
4. If you are installing from the CD, in the Directories box, double-click to open the English\Instalrs\Ps\_drvr\Win\_31 folders.

If you are installing from the installer files you downloaded with the Installer WebTool, in the Directories box, double-click to open the Prntdrv\Ps\_drvr\Win\_31 folders.

5. Select the Setup.exe file, and click OK.
6. Click OK in the Run dialog box.  
The README.WRI dialog box appears.
7. Click Read to view the README file. When you are finished, close the README file and click Continue.  
The necessary files are installed to your hard disk. When installation is complete, the PostScript Printer Driver Setup dialog box appears.
8. Click Restart Windows. After the computer restarts, return to the procedure "To install the Fiery X2 PPD file for Windows 3.1x:" on page 17.

**Setting the Fiery X2 as the default printer with Windows 3.1x**

You can specify the Fiery X2 as the default printer. Many Windows applications use the default printer when you choose the Print command.

---

**TO SET THE FIERY X2 AS THE DEFAULT PRINTER:**

1. In the Control Panel window, double-click the Printers icon.  
The Printers window appears.
2. Select the Fiery X2 from the Installed Printers box.

3. Click Set As Default Printer.

The Fiery X2 appears in the Default Printer area of the Printers window.

### Completing the Windows 3.1x connection

To print from Windows 3.1x you need to:

- Configure a port on each Windows 3.1x computer for the network or connection type
- Complete setup for the network type you are printing over
- Set up the Fiery X2 to accept print jobs from your computer

### Selecting a printer port with Windows 3.1x

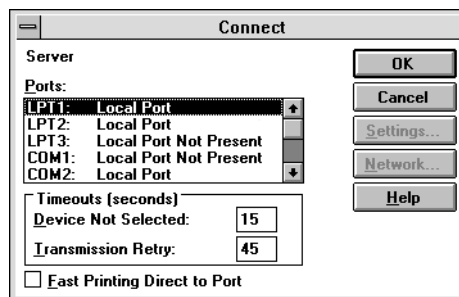
When you install a printer, Windows assigns it to a default printer port. If the Fiery X2 is connected to your computer through a network or you want to assign it to a different port, you need to change the port assignment. Check with your system administrator about which port to use.

You can also use this procedure to enable printing with the parallel port.

---

#### TO SELECT A PRINTER PORT:

1. In the Control Panel window, double-click the Printers icon.
2. In the Printers window, select the Fiery X2 in the Installed Printers list box.
3. Click Connect.



4. Connect the Fiery X2 to the same port as your network.

For parallel printing, select the port (LPT1, LPT2, or LPT3) connected to your parallel cable.

To print to a file, select FILE. Printing to a file is useful if the Fiery X2 is elsewhere or off-site. However, if you select the FILE port, you cannot print to a printer until you select a network or printer port. (In some applications, you can select the FILE port from the Print dialog box; this is preferable for temporary use since it doesn't require resetting the port in the Control Panel.)

5. Click OK.

The Printers window appears again, with the selected port next to the selected printer name in the Installed Printers list box.

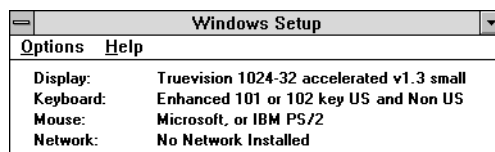
6. When you are finished, click OK and then click Close.

### Setting up IPX (Novell) printing with Windows 3.1x

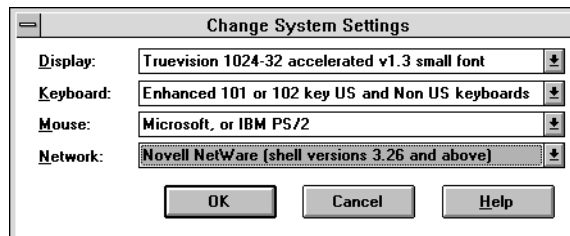
---

#### TO SET UP IPX (NOVELL) PRINTING:

1. In the Main group of the Windows Program Manager, double-click the Windows Setup icon.
2. From the Options menu, choose Change System Settings.



3. From the Network pop-up menu, choose Novell NetWare (shell versions 3.26 and above).



4. Click OK. When prompted, restart Windows.
5. In the Main group, double-click Control Panel, then double-click Printers.
6. In the Printers Control Panel window, select the Fiery X2 and click Connect.
7. Click Network.

If you are printing to a file, select FILE. Printing to a file is useful if the printer is elsewhere or off-site. However, if you select the FILE port, you cannot print to a printer until you select a network or printer port. If you select Network, the next window depends on the NetWare client driver version.

8. If the Network Printer Connections dialog box is displayed, select the port in the Printer connections box.
9. In the Available queues list box, select the server and queue name that correspond to the Fiery X2.
10. Click the Capture button, then click the Close button.

The Connect dialog box is displayed with the network path to the Fiery X2.

11. Click OK in the Connect dialog box.

The Printers window appears again, with the selected port next to the selected printer name in the Installed Printers list box.

12. Click Close in the Printers dialog box.

You are now ready to print to the Fiery X2 from Windows applications. When you select Print, jobs are routed to the print queue on the NetWare file server, and then sent to the Fiery X2. The network administrator should verify the network connection by printing a test document from each networked computer that will use the Fiery X2.

## Setting up PostScript printing with Windows NT 4.0

To set up Windows NT 4.0 printing, install the Windows NT PostScript printer driver and configure printing for your network type. Fiery X2 printer files support Intel-based Windows NT 4.0.

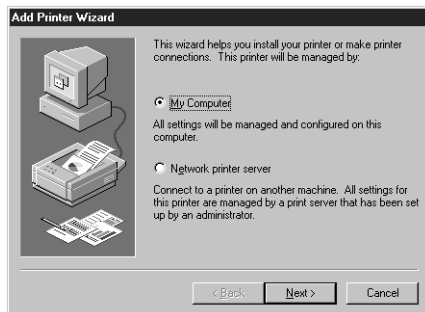
Some features of the Fiery X2 may not be available when using the Windows NT PostScript printer driver. For details, see the *User Guide*.

You can use the following procedure whether you are installing from the User Software CD or with installer files downloaded using the Installer WebTool.

---

**TO INSTALL THE FIERY X2 AS A LOCAL PRINTER WITH THE WINDOWS NT 4.0 POSTSCRIPT PRINTER DRIVER:**

1. If you are installing from the CD, insert it into the CD-ROM drive.
2. Click Start in the Windows NT taskbar, choose Settings, and then choose Printers.
3. Double-click Add Printer.
4. To install a printer locally, select My Computer and click Next.

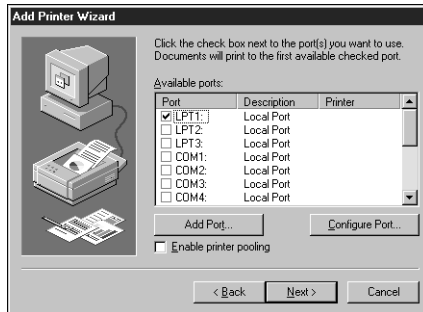


“My Computer” is available if you logged in to a computer on which you have Administrator privileges. If it is not available, you can add a network printer. The procedure is similar to adding a port (see page 29).

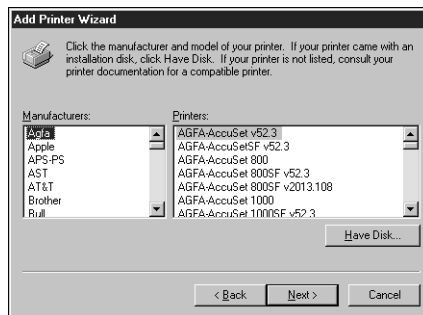


5. Check LPT1: and click Next.

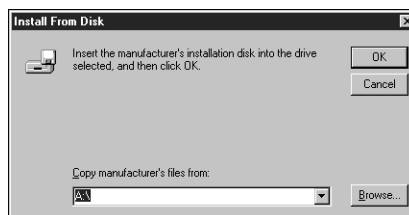
This is a general installation that works for the parallel port connection. You can add a network port later, according to your network type.



6. In the dialog box displaying lists of manufacturers and printers, click Have Disk.



The Install from Disk dialog box prompts you for the disk.



7. If you are installing from the CD, type the name of the CD-ROM drive (for example, D:\), and click Browse.

If you are installing from the installer files you downloaded with the Installer WebTool, type the name of your hard disk drive (for example, C:\), and click Browse.

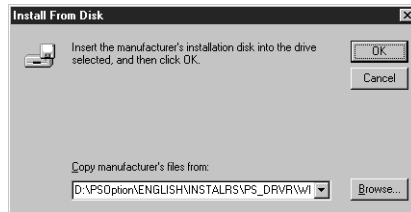
8. If you are installing from the CD, browse to the English\Instalrs\Ps\_drvr\WIN\_NT4x folder and click Open.

If you are installing from the installer files you downloaded with the Installer WebTool, browse to the Prntdrv\Ps\_drvr\WIN\_NT4x folder and click Open.

Make sure "Ntprint.inf" is selected in the Look in box.

The path is copied to the Install from Disk dialog box.

9. Verify the path is correct, and click OK.

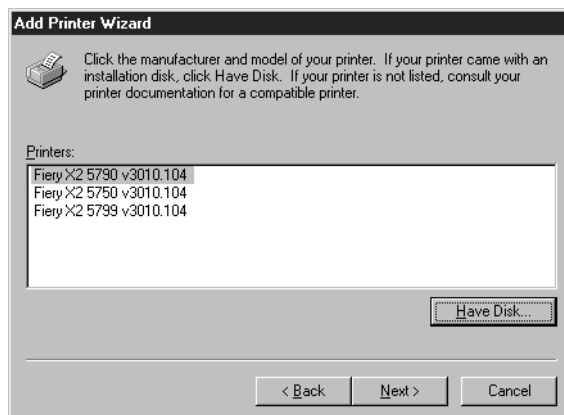


10. In the Printers box, select the appropriate Fiery X2 PPD file and click Next.

For the 5750, select Fiery X2 5750 v3010.104.

For the 5790, select Fiery X2 5790 v3010.104.

For the 5799, select Fiery X2 5799 v3010.104.

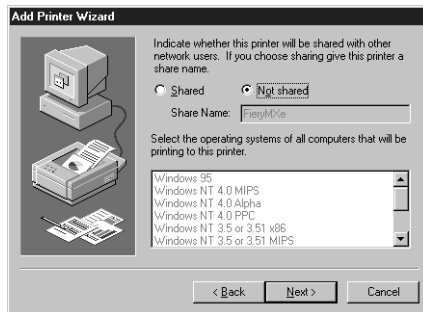


11. Using a maximum of 20 characters, enter a name for the Fiery X2 (or leave the default name) in the Printer name box, and choose whether you want the Fiery X2 to be your default printer. Click Next.

**NOTE:** Entering more than 20 characters may cause printing problems with some network applications.



12. Indicate whether you want the printer installed as a shared printer. Click Next.



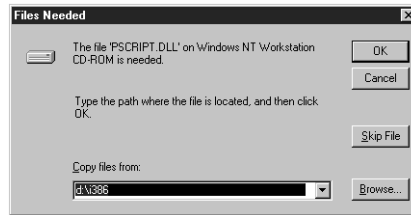
If you select Shared, you must also enter a Share Name for the printer (or leave the default name) and make selections from the list of operating systems used by client workstations. For information on shared printers, see the *Administrator Guide*.

13. Click No in the next dialog box to postpone printing a test page, and click Finish.

---

**TO COMPLETE INSTALLATION OF THE FIERY X2 WITH THE WINDOWS NT 4.0 POSTSCRIPT PRINTER DRIVER:**

If the Files Needed dialog box appears, it prompts you to locate the Pscript.dll file.



1. **If this is the first PostScript printer on your system:**
  - Eject the User Software CD and insert the Windows NT Installation CD.
  - In the text field, type the name of the CD-ROM drive (for example, D:\), and click Browse.
  - Browse to i386 (the folder containing the Pscript.dll file).

**If you have already installed a PostScript printer on your system:**

- In the text field, type the name of the hard drive (for example, C:\), and click Browse.
  - Browse to winnt\system32\spool\drivers\w32x86 (the folder containing the Pscript.dll file).
2. Click OK, then click OK in the Files Needed dialog box.
- When installation is complete, the Printers window appears with an icon for the newly installed printer.

## 3. Complete the printer connection according to your network type.

To do this:	See:
Configure the parallel connection	“Completing the Windows NT 4.0 parallel port connection” below
Configure the TCP/IP (lpr port) connection	“Completing the Windows NT 4.0 TCP/IP connection” on page 28
Configure the IPX (Novell) connection	“Completing the Windows NT 4.0 IPX (Novell) connection” on page 31

**Completing the Windows NT 4.0 printer connection**

To print from Windows NT 4.0 you need to:

- Set up network servers, if any
- Set up the Fiery X2 to accept print jobs from your computer
- Configure a port on each Windows NT computer for the network or connection type

**Completing the Windows NT 4.0 parallel port connection**

The parallel port cable connects the Fiery X2 to a single computer.

Once you have installed the Windows NT PostScript printer driver and the Fiery X2 PPD, complete the setup for parallel port printing.

---

**TO SET UP PARALLEL PRINTING FOR WINDOWS NT 4.0:**

1. Click the Start button, choose Settings, and then choose Printers.
2. Double-click the Fiery X2 icon and choose Properties from the Printer menu.  
In the Ports tab, confirm that LPT1 (Local Port) is checked.  
The Fiery X2 is ready to accept parallel print jobs from your computer, using the Windows NT PostScript printer driver and the Fiery X2 PPD.
3. Click the General tab and click Print Test Page.
4. Click the Sharing tab if you want to share the Fiery X2 with network users. Select Shared, and select a share name.  
Select the operating system or systems used by your network clients if you want to install a printer driver that those clients can download.
5. Click OK to exit the Printer Properties dialog box.

**Completing the Windows NT 4.0 TCP/IP connection**

Once you have installed the Windows NT 4.0 PostScript printer driver and the Fiery X2 PPD, complete the setup for the TCP/IP and lpr connection as follows:

- Prepare the Fiery X2 to accept print jobs using TCP/IP and lpr protocols. (For details, see the *Administrator Guide*.)
- Configure the workstation for the TCP/IP connection.

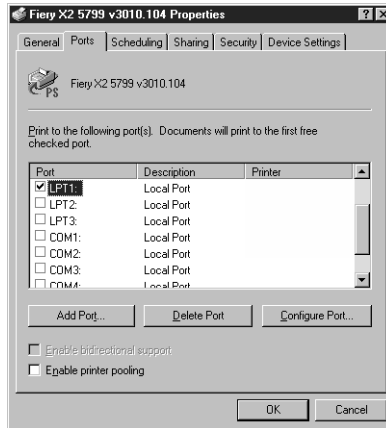
Before you continue, ask the system administrator for the IP address assigned to the Fiery X2, as well as the subnet mask and the gateway address, if they are used.

The TCP/IP Protocol and Microsoft TCP/IP Printing software should already be installed on the Windows NT workstation.

---

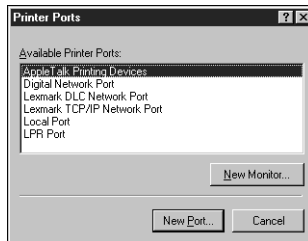
**To SET UP TCP/IP AND LPR PRINTING FOR WINDOWS NT 4.0:**

1. Open the Properties dialog box for the Fiery X2, and click the Ports tab.



2. Click Add Port.

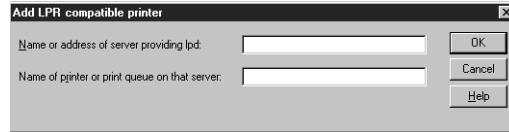
The available port types are displayed.



3. Select LPR Port and click New Port.

If the LPR port is not listed, install the TCP/IP protocols. See the *Administrator Guide* or your Windows NT documentation.

4. Enter the IP address of the Fiery X2.



If your network uses Domain Name Services (DNS), enter the DNS name assigned to the Fiery X2 instead of the IP address.

5. Press Tab and type the internal name of the Fiery X2.

The name must be one of the following:

print\_5750  
hold\_5750  
print\_5790  
hold\_5790  
print\_5799  
hold\_5799

**NOTE:** This name is case-sensitive; type it *exactly* as shown above.

6. Click OK.

The workstation checks the address or DNS name you entered and notifies you if it cannot resolve the address.

7. Click Close in the Printer Ports dialog box.

The new port configuration is reflected in the Ports tab. You should now print a test page to verify the connection.

8. Click the General tab and click Print Test Page.

When you print, your PostScript files are sent over the LPR Port connection to the Fiery X2.

9. Click OK to close the Printer Properties dialog box.



### Completing the Windows NT 4.0 IPX (Novell) connection

Complete the setup for the IPX (Novell) connection as follows:

- Configure the Novell network and file server for handling Fiery X2 print jobs.  
The file server should be configured with a print server and print connection for the Fiery X2. For details, see your NetWare documentation.
- Prepare the Fiery X2 for IPX printing.
- Set up the IPX connection on the workstation.

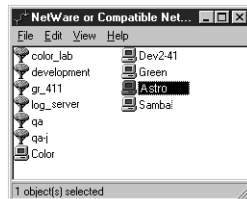
NetWare protocols (NWLink IPX/SPX Compatible Transport) and NetWare client services should already be installed on the Windows NT workstation.

---

#### TO SET UP IPX (NOVELL) PRINTING FOR WINDOWS NT 4.0:

1. Double-click Network Neighborhood.
2. Double-click NetWare or Compatible Network.

A list of NetWare servers is displayed.

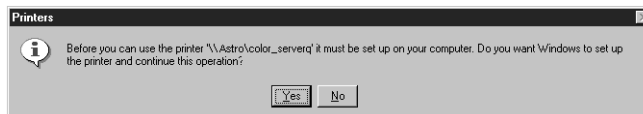


3. Double-click the NetWare Tree or File Server on which the network administrator defined a print connection for the Fiery X2.

You may have to log in to the file server as a guest to see the print connections.

4. Double-click the print connection defined for the Fiery X2.

If the NetWare server does not have a suitable driver for the Fiery X2 you may be asked if you want to set up the printer on your workstation.



5. Click Yes.

The Add Printer Wizard appears.

6. Specify if you print from MS-DOS programs and click Next.

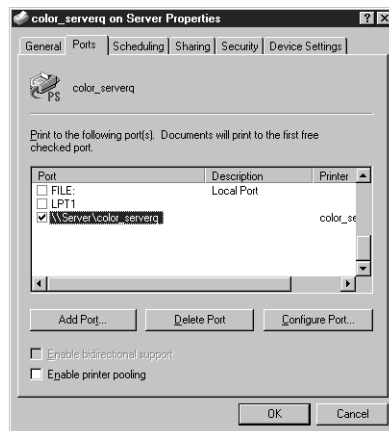
If you select Yes, you will need to capture a printer port before continuing.

7. Install the Fiery X2 PPD (start with step 6 on page 23).

When installation is complete, a new printer window appears, with the name of the print queue on the NetWare server.

8. Choose Properties from the Printer menu and click the Ports tab.

The NetWare queue you just connected to is listed and checked as a port for the Fiery X2.



9. Click the General tab and click Print Test Page.

The Fiery X2 polls the NetWare server for print jobs in the print connection defined for the Fiery X2. When you print, your PostScript files are spooled to that connection and sent over the queue "port" to the Fiery X2.

The test page job is listed in the queue window until it is printed.

## Installing Fiery X2 software

The User Software CD includes software installers for three Fiery utilities and one Fiery plug-in. This software is supported with Windows 95 and Windows NT 4.0 only, and must be separately installed on each user's computer.

### Fiery Downloader and Fiery Print Calibrator

The installers for two of the Fiery utilities (Fiery Downloader and Fiery Print Calibrator) are the same. Before you begin the installation, determine the following:

- Where do you want to install the utility on your hard disk?

By default, the installer places the utility in a folder named "Fiery" on the top level of your hard disk.

- What do you want to name the utility folder in the Windows\Start Menu\Programs folder?

By default, the installer names the folder "Fiery."

---

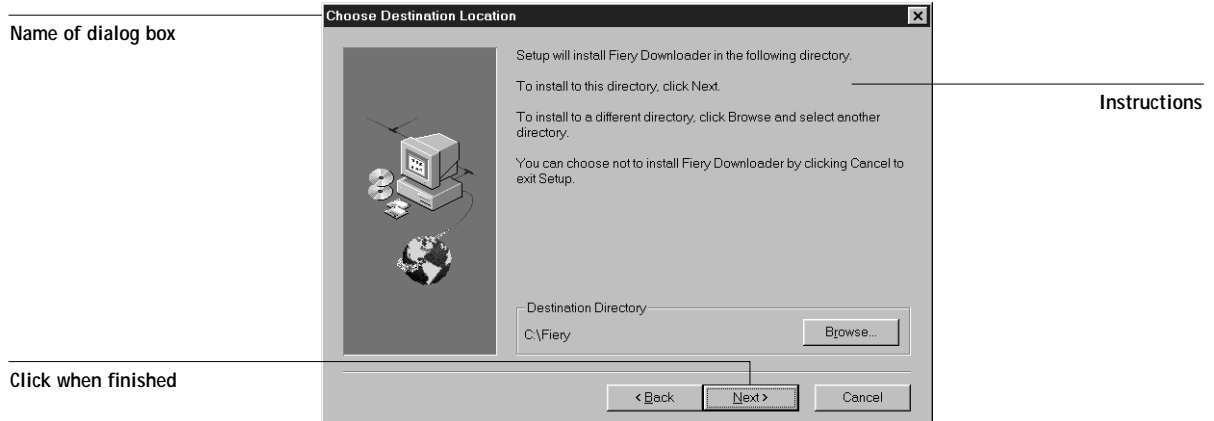
#### TO INSTALL FIERY DOWNLOADER AND FIERY PRINT CALIBRATOR:

1. On the User Software CD, browse to the English\Instalrs folder.
2. If you are installing Fiery Downloader, double-click to open the Download\Disk1 folders.

If you are installing Fiery Print Calibrator, double-click to open the Calib\Disk1 folders.

3. Double-click the Setup.exe icon.

## 4. Follow the instructions in the Setup dialog boxes to complete installation.



Use the table below as a guide when installing Fiery Downloader and Fiery Print Calibrator. For specific instructions, read the information in each dialog box.

Name of dialog box:	Action:	When finished:
Welcome	Read the Setup program introduction.	Click Next.
Choose Destination Location	Specify a hard disk location for the installed utility software.	Click Next.
Select Program Folder	Specify a folder name for the utility software located in the Programs menu.	Click Next.
Start Copying Files	Verify the information in the Current Settings area.	Click Next.
Information	Acknowledge that the software installation is complete.	Click OK.

## Fiery Spooler

The installer for Fiery Spooler is different from the installers for the other Fiery utilities. In addition to the Fiery Spooler utility software, the installer also installs Java files necessary to use Fiery Spooler. Before you begin this installation, determine the following:

- Where do you want to install the utility on your hard disk?  
By default, the installer places the utility in a folder named “FierySpooler” on the top level of your hard disk.
- What do you want to name the utility folder in the Windows\Start Menu\Programs folder?  
By default, the installer names the folder “FierySpooler.”

---

### TO INSTALL FIERY SPOOLER:

1. On the User Software CD, double-click to open the English\Instalrs\Spooler\Disk1 folders.
2. Double-click the Setup.exe icon.
3. Follow the instructions in the Setup dialog boxes to complete installation of Fiery Spooler.

Use the table below as a guide when installing Fiery Spooler. For specific instructions, read the information in each dialog box.

Name of dialog box:	Action:	When finished:
Welcome	Read the Setup program introduction.	Click Next.
Choose Destination Location	Specify a hard disk location for the installed utility software.	Click Next.
Select Program Folder	Specify a folder name for the utility software located in the Programs menu.	Click Next.
Start Copying Files	Verify the information in the Current Settings area.	Click Next.

Name of dialog box:	Action:	When finished:
Java (TM) Support	Indicate that you want to install Java files onto your hard disk. These files are necessary for using Fiery Spooler.	Click Yes.
Java (TM) Support	Read the License Agreement.	Click Yes.
Java (TM) Support	Acknowledge that the installation of Java files is complete.	Click OK.
Java (TM) Support	Indicate that you want to restart your computer in order to use the Fiery Spooler software.	Click Yes.

## Fiery Scan

The Scan folder contains the TWAIN Fiery Scan module installer. This installer automatically creates a folder named Twain\_32 in the Windows folder on your hard disk, and then installs the Fiery Scan plug-in module into that folder.

You can access the Fiery Scan plug-in from Adobe Photoshop using the TWAIN module. For details, see the *User Guide*.

**NOTE:** Before installing the TWAIN Fiery Scan module, make sure the TWAIN plug-ins (installed with Adobe Photoshop software) are located in the correct Photoshop\Plugins subfolder. If the TWAIN plug-ins have been deleted, you must reinstall Adobe Photoshop software in order to use Fiery Scan.

---

### TO INSTALL THE TWAIN FIERY SCAN MODULE:

1. On the User Software CD, double-click to open the English\Instalrs\Scan\Disk1 folders.
2. Double-click the Setup.exe icon.

3. Follow the instructions in the Setup dialog boxes to complete installation of the TWAIN Fiery Scan module.

Use the table below as a guide when installing the TWAIN Fiery Scan module. For specific instructions, read the information in each dialog box.

Name of dialog box:	Action:	When finished:
Welcome	Read the introduction.	Click Next.
Information	Acknowledge that the software installation is complete.	Click OK.

## Using the software for the first time

Before you can use the newly installed software, you must properly configure the connection to the Fiery X2.

### Configuring the connection to the server

The first time you use one of the Fiery utilities or Fiery Scan, you are prompted to configure the connection to the Fiery X2. The same configuration is used for Fiery Downloader, Fiery Print Calibrator, and Fiery Scan, so any change in the configuration affects all of these. The procedure for configuring the connection with Fiery Spooler is different and is described on page 40.

---

#### BEFORE YOU BEGIN:

- If you are using IPX/SPX, print the Configuration page from the Control Panel and note the IPX address and Server Name (in Server Setup) for the Fiery X2.

In general, you should use the Ethernet IPX address. If you are connected through a Token Ring network, use the Token Ring IPX address.

- If you are using TCP/IP, print the Configuration page from the Control Panel and note the IP Address of the Fiery X2.

You can also set up a Domain Name Server (DNS) for the IP address of the Fiery X2 in the printcap file and use that name. See your Windows system documentation for information.

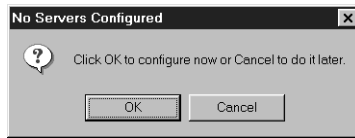
---

**TO CONFIGURE THE CONNECTION TO THE FIERY X2:**

1. Launch Fiery Downloader or Fiery Print Calibrator by double-clicking its icon or by choosing it from the Start>Programs menu.

Launch Photoshop, and open Fiery Scan (for details, see the *User Guide*).

2. Click OK.



3. Enter the appropriate information for the Fiery X2.

**Nickname**—Enter a name for the Fiery X2. This name can be any name you wish; it does not have to match the actual Server Name of the Fiery X2.

**NOTE:** The Nickname cannot contain any of the following seven characters:  
[ ] \_ " ' <space> <tab>

**Protocol**—Choose the type of network protocol you are using from the pop-up menu.

**Server Name**—If you are using the TCP/IP protocol, enter the IP address (or DNS name) of the Fiery X2. If you are using the IPX protocol, enter the actual Server Name of the Fiery X2 as it was defined during Server Setup.

**IPX Address**—(This area is enabled only if you choose IPX from the Protocol pop-up menu.) Enter the IPX Address of the Fiery X2.

**New Device**—Enter the name of the device that the Fiery X2 is connected to: 5750, 5790, or 5799. This device name appears in the Printer Setup section of the Configuration page.



For TCP/IP networks

For IPX/SPX networks

4. When you have entered all the information, click Add.
5. With the device name (5750, 5790, or 5799) selected in the Devices list, click OK.

The Fiery X2 appears in the list of available servers. The first line of the entry displays the nickname you gave the server, followed by the protocol you chose. The second line displays the device name.

6. With the device name (5750, 5790, or 5799) selected in the list of Available Servers, click OK to begin using the software.

### Modifying the configuration

You should edit the configuration whenever there is any change to your Fiery X2 server or network, such as a Server Name, IP Address/IPX Address, or device change. First change the specific Fiery X2 Setup information before configuring the connection.

---

#### TO MODIFY THE CONFIGURATION:

1. To edit information for a Fiery X2 in the list of available servers, select the Fiery X2 by its nickname and click **Modify**. Edit information in the **Modify Server Settings** dialog box as necessary, and click **OK** when finished.
2. To add a new Fiery X2 to the list of available servers, click **Add**. Configure the **Add New Server** dialog box as outlined in step 3 through step 5 above.
3. To remove a Fiery X2 from the list of available servers, select the Fiery X2 by its nickname and click **Remove**; then click **Yes** in the **Remove** dialog box.

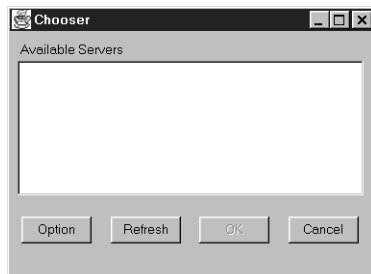
### Configuring the connection for Fiery Spooler

The first time you launch Fiery Spooler, you are prompted to configure a connection to the Fiery X2. This configuration procedure is different from that for the other Fiery utilities.

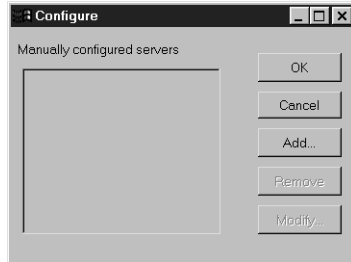
---

#### TO CONFIGURE THE CONNECTION FOR FIERY SPOOLER:

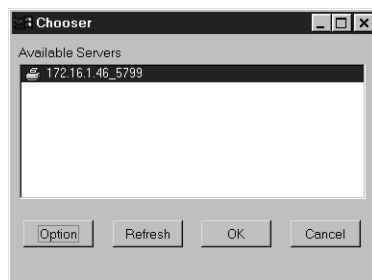
1. Launch Fiery Spooler by double-clicking its icon or by choosing it from the **Start\Programs** menu.
2. Click **Option**.



3. Click Add.



4. Enter the appropriate information for the Fiery X2.  
Name—Enter the IP address (or DNS name) of the Fiery X2.  
New Device—Enter the name of the device that the Fiery X2 is connected to: 5750, 5790, or 5799. This device name appears in the Printer Setup section of the Configuration page.
5. When you have entered all the information, click Add.
6. With the device name (5750, 5790, or 5799) selected, click OK.  
The Fiery X2 appears in a list of configured servers.
7. Click OK in the Configure dialog box.  
The Fiery X2 appears in a list of available servers.



8. With the Fiery X2 selected in the list of available servers, click OK to begin using Fiery Spooler.

### Modifying the configuration

You should edit the configuration whenever there is any change to your Fiery X2 server or network, such as an IP Address or device change. First change the specific Fiery X2 Setup information before configuring the connection.

---

#### TO MODIFY THE CONFIGURATION:

1. In the Chooser dialog box, click Option.
2. To edit information for a Fiery X2, select the Fiery X2 by its IP address or DNS name and click Modify. Edit information in the Settings dialog box as necessary, and click OK when finished.
3. To add a new Fiery X2, click Add. Configure the Settings dialog box as outlined in step 4 through step 6 above.
4. To remove a Fiery X2, select the Fiery X2 by its IP address or DNS name and click Remove.
5. Click OK in the Configure dialog box.

The list of available servers reflects the modifications you have made.

### Copying color files from the User Software CD

You can copy additional color files from the User Software CD to your hard disk. Many of the files are PostScript files that you can download and print using Fiery Downloader.

The User Software CD contains the following color files:

Icm folder	ICM printer profiles specially designed for use with the Fiery X2, your particular copier model, and the Windows color management system. For instructions on installing these profiles, see “Installing the Fiery X2 ICM printer profile for Windows 95” on page 44.
------------	---

Photoshp folder	<p>Separation Tables for use with Adobe Photoshop and the Fiery X2. The Separation Tables match RGB-to-CMYK conversions performed in Photoshop to those performed on the Fiery X2 by color rendering dictionaries (CRDs). Calrgb.ams, a monitor settings file that sets the proper source color space.</p> <p>For instructions on installing these files, see “Installing files for Adobe Photoshop” on page 44.</p>
Clrfiles folder	<p>Cmyk_ref.ps, an 11-page, letter-size PostScript file to use for reference when defining CMYK colors in applications.</p> <p>PANTONE.ps, a 19-page, letter-size PostScript file that indicates the closest equivalent of PANTONE coated colors that the Fiery X2 and your particular copier model can produce. The method used to print the Pantone.ps file differs depending on the Spot Color Matching setting. For more information, see the <i>User Guide</i>.</p> <p>Rgb_01.doc, a file you can print from Microsoft Word 6.0 or later to view available RGB colors.</p> <p>Rgb_02.ppt, a file you can print from PowerPoint 4.0 or later to view available RGB colors.</p>
Calibrat folder (inside Clrfiles folder)	<p>Four PostScript measurements files of color patches: custom21.ps, custom34.ps, stand21.ps, and stand34.ps. The numbers in the filenames refer to the number of patches on the page.</p> <p>The Custom files are provided to enable you to download measurement patches that incorporate the copier’s current calibration set. The Standard files are provided to enable you to download standard measurement patches that ignore the copier’s current calibration set.</p> <p>NOTE: These files are provided for expert users and should not be used for day-to-day calibration.</p>
Demo.meas	<p>Demo Measurement, a sample measurements file for use with Fiery Print Calibrator. This file is for <i>demonstration purposes only</i> and should not be used to calibrate the Fiery X2.</p>

## Installing the Fiery X2 ICM printer profile for Windows 95

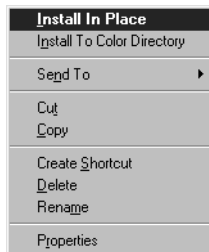
Use the following procedure to install the Fiery X2 ICM printer profile.

**NOTE:** The ICM printer profile should *not* be installed for printing with the Microsoft Office 97 suite of applications. If you print from Microsoft Office 97 with the ICM profile installed, JPEG, BMP, and TIFF images print incorrectly.

---

### TO INSTALL THE ICM PROFILE:

1. On the User Software CD, open the Icm folder.
2. Copy the ICM profile that corresponds to your copier to the Windows\System\Color folder on your hard disk.  
For the 5750, select EfmX5010.icm.  
For the 5790, select EfmX3010.icm.  
For the 5799, select EfmX7010.icm.
3. In the Color folder, right-click to select the ICM profile.
4. Choose Install in Place from the menu that appears.



In the Windows\System\Color folder, the icon for the ICM profile is now white, indicating that it is installed.

## Installing files for Adobe Photoshop

If you use Adobe Photoshop, install the Separation Tables and the Calrgb.ams monitor settings file for best color printing results. These files are found on the User Software CD in the Photoshop folder.

**NOTE:** The Calrgb.ams monitor settings file should be loaded before using Fiery Scan.

### Loading the Separation Tables

The Separation Tables enable RGB-to-CMYK conversions within Photoshop that correspond to conversions performed by color rendering dictionaries on the Fiery X2.

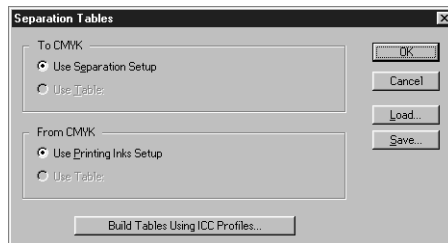
---

#### TO LOAD THE SEPARATION TABLES:

1. On the User Software CD, open the Photoshop folder.
2. Copy the appropriate files for your copier to the Adobe Photoshop folder.  
For the 5750, copy the files X5750mxp.ast and X5750mxs.ast.  
For the 5790, copy the files X5790mxp.ast and X5790mxs.ast.  
For the 5799, copy the files X5799mxp.ast and X5799mxs.ast.
3. Launch Photoshop.
4. For Photoshop 4.0, from the File menu, choose Color Settings, and from the Color Settings submenu, choose Separation Tables.

For Photoshop 3.0 and Photoshop 2.5, from the File menu, choose Preferences, and from the Preferences submenu, choose Separation Tables.

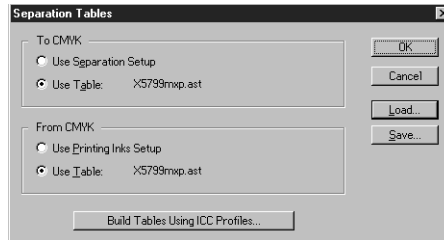
5. In the Separation Tables dialog box, click Load.



6. Browse to the Adobe Photoshop folder, select the appropriate file, and click Open (Photoshop 4.0) or OK (Photoshop 3.0 or 2.5).

Select the <copier model>p.ast file for separating *photographic* RGB images to CMYK. Select the <copier model>s.ast file for separating *solid color* RGB images to CMYK.

7. Verify that the file you selected appears after "Use Table:" in both places and click OK.



Separation tables remain loaded the next time you start Photoshop, unless you remove them.

### Loading the monitor settings file

The Calrgb.ams monitor settings file for Photoshop defines the source color space for printing to the Fiery X2.

NOTE: If you use Fiery Scan, you should install the Calrgb.ams monitor settings file.

---

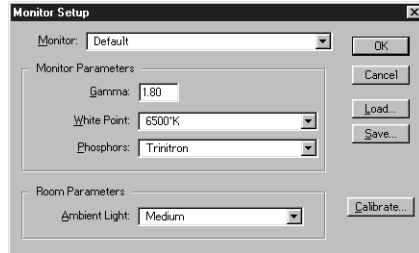
#### TO LOAD THE MONITOR SETTINGS FILE:

1. On the User Software CD, open the Photoshop folder.
2. Copy the Calrgb.ams file to your Adobe Photoshop folder.
3. Launch Photoshop.
4. For Photoshop 4.0, from the File menu, choose Color Settings, and from the Color Settings submenu, choose Monitor Setup.

For Photoshop 3.0 or Photoshop 2.5, from the File menu, choose Preferences, and from the Preferences submenu, choose Monitor Setup.

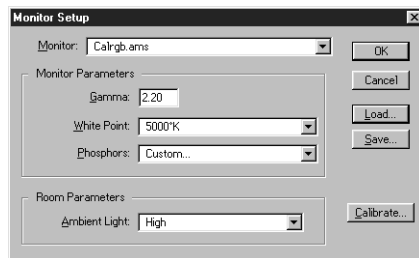


5. In the Monitor Setup dialog box, click Load.



6. Browse to your Adobe Photoshop folder, select the Calrgb.ams file, and click Open (Photoshop 4.0) or OK (Photoshop 3.0 or 2.5).

The Calrgb.ams file appears as the selection in the Monitor pop-up menu of the Monitor Setup dialog box.



7. Under Room Parameters, set Ambient Light to High and click OK.



## Installing User Software on a Mac OS Computer

The general steps for installing the Fiery X2 user software and setting up printing on a Mac OS-based computer are:

- Install the Adobe PostScript printer driver and Fiery X2 PostScript Printer Description file (PPD).
- Set up the Fiery X2 in the Chooser.
- Install the Fiery utilities (Fiery Downloader, Fiery Print Calibrator, and Fiery Spooler), and Fiery Scan plug-in.
- Install the screen fonts.
- Install the ColorSync™ profiles.
- Copy additional color-reference and application-specific files from the User Software CD as needed.

## Installing Mac OS software

The Installers folder on the User Software CD contains the following installer folders:

- ColorSync™ Profiles Installer—Fiery X2 ColorSync ICC profiles installer
- Fiery Downloader—Fiery Downloader installer
- Fiery Print Calibrator—Fiery Print Calibrator installer
- Fiery Scan—Fiery Scan installer, which installs the Fiery Scan (TWAIN) plug-in and Fiery TWAIN plug-in
- Fiery Spooler—Fiery Spooler installer
- Printer Driver—Adobe PostScript printer driver and PPD installer

**NOTE:** An installer is not provided for the Mac OS screen fonts; they must be copied directly from the User Software CD to the System Folder:Fonts folder on your hard disk. For instructions, see “Screen fonts” on page 56.

In addition, the User Software CD contains various color files. These files must be copied or installed from the CD and placed in the appropriate locations on your hard disk (see “Copying color files from the User Software CD” on page 57).

- PostScript CMYK color reference file
- PostScript PANTONE Coated color reference file
- RGB color reference files for specifying colors from Microsoft Word and PowerPoint
- Separation Tables and a monitor settings file for use with Adobe Photoshop

**NOTE:** If you operate the Fiery X2 in a copy shop, quick print shop, or service bureau, you might want to provide copies of the printer driver, PPD file, separation tables, and relevant documentation to customers. This ensures that jobs they prepare are properly formatted for printing to the Fiery X2.

### **Downloading printer files with the Installer WebTool**

Installers for the Fiery X2 printer files can be downloaded from the Fiery X2 with the Installer WebTool (if the site administrator has enabled Internet access to the Fiery X2). For instructions, see “Using the Installer WebTool” on page 64.

Once you download the installers, the installation process is identical to installing from the User Software CD.

### **Setting up PostScript printing with Mac OS**

To set up the Fiery X2 as a PostScript printer, you must install the Adobe PostScript printer driver, and the PPD file that corresponds to your copier. The AdobePS printer driver and PPD file are provided on the User Software CD.

Printer drivers provide a way to communicate information on print jobs between your applications, the Fiery X2, and any other PostScript printer connected to your computer.

You can use the following procedures whether you are installing from the User Software CD or with installer files downloaded using the Installer WebTool.

---

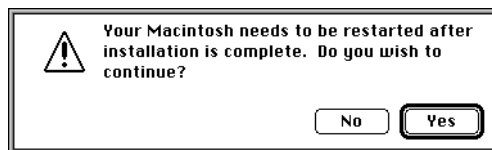
**TO INSTALL THE ADOBEPS PRINTER DRIVER AND PPD FILE:**

1. If you are installing from the CD, open the Installers:Printer Driver folder.

If you are installing from the installer files you downloaded with the Installer WebTool, open the Printer Driver folder on your hard disk.

2. Double-click the AdobePS Installer icon.

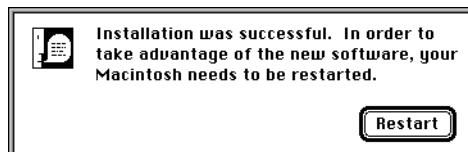
A warning dialog box appears.



3. Click Yes to continue with installation of printer driver software, and to confirm that your computer must be restarted after installation.

The AdobePS Installer installs the Adobe PostScript printer driver, the PPD file that corresponds to your copier, and the Apple Chooser.

4. Click Restart when installation is complete.



### Setting up the Fiery X2 in the Chooser

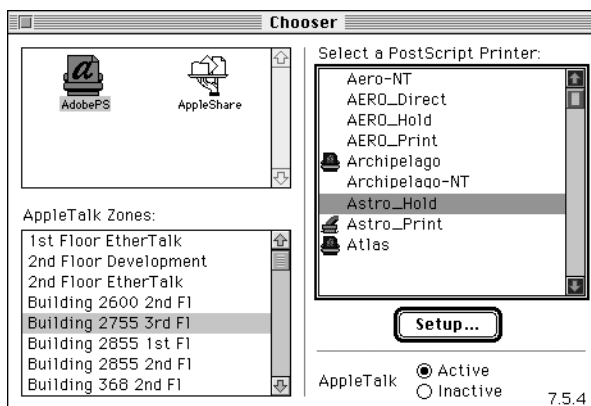
After you install the AdobePS printer driver and PPD file (see "Setting up PostScript printing with Mac OS" on page 50), you need to set up the Fiery X2 in the Chooser in order to take full advantage of its features. This section describes how to set up the Fiery X2 with the AdobePS printer driver.

---

**TO SET UP THE FIERY X2 IN THE CHOOSER:**

1. Select Chooser from the Apple menu.
2. Click the AdobePS icon.

Make sure AppleTalk is set to Active.



3. Select the correct AppleTalk Zone, if necessary.
4. Select the Fiery X2 from the "Select a PostScript Printer" list, and click Setup.

The Fiery X2 appears in the list in the form of <server name>\_<device name>\_<print connection>. The device name (5750, 5790, or 5799) is the name of your copier. The AdobePS printer driver automatically selects the correct PPD file for your Fiery X2.

**NOTE:** Only the print connections that are available appear in the Chooser. Each Fiery X2 print connection (Direct, Hold, and Print) has a separate name, and you will need to set up each print connection separately. Repeat step 4 for all enabled connections.

5. Close the Chooser.

## Installing Fiery X2 software and fonts

Before you begin each of the following installation procedures, determine where you want to install each item on your hard disk. By default, the files are placed in the following locations:

- The ColorSync Profiles are placed in the System Folder:Preferences folder on your hard disk.

If your system uses ColorSync, you must install these profiles in the ColorSync Profiles folder inside the System Folder:Preferences folder. You should install the ColorSync profiles only if your system uses them.

- Fiery Downloader is placed in a folder named “Fiery” on the top level of your hard disk.
- Fiery Print Calibrator is placed in a folder named “Fiery” on the top level of your hard disk.
- Fiery Scan is placed on the top level of your hard disk. You are prompted to locate your Photoshop plug-ins folder.

The installer also creates a folder named TWAIN in your System Folder:Preferences folder, and then installs a Fiery Scan module and a Source Manager file into that folder. You must then install the Fiery Scan (TWAIN) plug-in module into the appropriate Photoshop folder in order to use it.

**NOTE:** Before installing the Fiery TWAIN module, make sure the TWAIN plug-in (installed with Adobe Photoshop software) is located in the correct Photoshop\Plugins subfolder. If the TWAIN plug-in has been deleted, you must reinstall Adobe Photoshop software in order to use Fiery Scan.

- Fiery Spooler is placed in a folder named “Fiery” on the top level of your hard disk.

**NOTE:** An installer is not provided for the Mac OS screen fonts; they must be copied directly from the User Software CD to the System Folder:Fonts folder on your hard disk. For instructions, see “Screen fonts” on page 56.

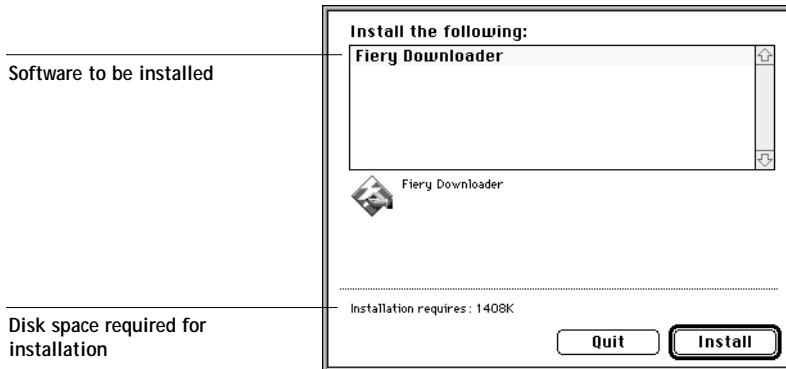
---

**TO INSTALL MAC OS SOFTWARE:**

1. On the User Software CD or your hard disk, double-click to open the Installers folder.

If you are installing:	Double-click:
ColorSync profiles	To open the ColorSync™ Profiles Installer folder
Fiery Downloader	To open the Fiery Downloader folder
Fiery Print Calibrator	To open the Fiery Print Calibrator folder
Fiery Scan	To open the Fiery Scan folder
Fiery Spooler	To open the Fiery Spooler folder

2. Double-click the Installer icon.
3. Click Install.



4. Specify the locations into which to install each item.



Use the table below as a guide when installing software.

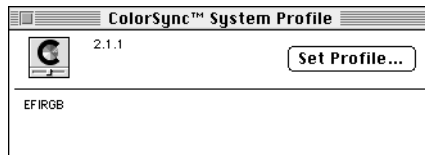
If you are installing:	Action:	To install:
ColorSync Profiles	Browse to the System Folder: Preferences:ColorSync™ Profiles folder. Perform the steps in “To set the ColorSync system profile:” on page 56 after installation is complete.	Click Install into “ColorSync™ Profiles.”
Fiery Downloader	Specify a hard disk location for the installed Fiery Downloader software.	Click Install.
Fiery Print Calibrator	Specify a hard disk location for the installed Fiery Print Calibrator software.	Click Install.
Fiery Scan	Specify where to install the Fiery Scan (TWAIN) plug-in. The folder into which you install the plug-in depends on the version of Photoshop you are using. For Photoshop 4.0, browse to the Photoshop:Plug-ins:Import/Export folder. For Photoshop 3.0x, browse to the Photoshop:Plug-ins:Acquire/Export folder. For Photoshop 2.5, browse to the Photoshop:Plug-ins folder.	Click Install into “(foldername).”
Fiery Spooler	Specify a hard disk location for the installed Fiery Spooler software.	Click Install.

5. If prompted, click Quit to close the software installer.

---

**TO SET THE COLORSYNC SYSTEM PROFILE:**

1. For ColorSync Profiles, choose Control Panels>ColorSync System Profile from the Apple Menu.
2. Click Set Profile.
3. From the list of ColorSync profiles, select EFIRGB ICC and click Select.



When selected as the ColorSync system profile, EFIRGB ICC sets the optimal source color space for printing to the Fiery X2. The color space set by the EFIRGB ICC profile is the same as that set by the EFIRGB setting of the RGB Source print option.

**NOTE:** The RGB Source print option setting overrides the ColorSync system profile setting.

4. Close the ColorSync System Profile window.

## Screen fonts

The User Software CD includes screen fonts that correspond to the 136 built-in PostScript printer fonts on the Fiery X2. In order to view and use these fonts, you must copy them from the User Software CD to your hard disk.

---

**TO INSTALL SCREEN FONTS:**

1. On the User Software CD, open the Fonts folder.
2. Copy the fonts that you want to install to the System Folder:Fonts folder on your hard disk.

If you have any applications open, you must quit and relaunch them before the newly installed screen fonts are available.

## Copying color files from the User Software CD

You can copy additional color files from the User Software CD to your hard disk. Many of the files are PostScript files that you can download and print using Fiery Downloader.

The User Software CD contains the following color files:

- |                    |  |
|--------------------|--|
| Photoshop folder   | Separation Tables for use with Adobe Photoshop and the Fiery X2. The Separation Tables match RGB-to-CMYK conversions performed in Photoshop to those performed on the Fiery X2 by color rendering dictionaries (CRDs).<br>Calibrated RGB, a monitor settings file that sets the proper source color space.<br>For instructions on installing these files, see “Installing files for Adobe Photoshop” on page 58.   |
| Color Files folder | CMYK Color Reference.ps, an 11-page, letter-size PostScript file to use for reference when defining CMYK colors in applications.<br>PANTONE Book.ps, a 19-page, letter-size PostScript file that indicates the closest equivalent of PANTONE coated colors that the Fiery X2 and your particular copier model can produce. The method used to print the PANTONE Book.ps file differs depending on the Spot Color Matching setting. For more information, see the <i>User Guide</i> .RGB page 01, a file you can print from Microsoft Word 6.0 or later to view available RGB colors.<br>RGB page 02, a file you can print from PowerPoint 4.0 or later to view available RGB colors. |

Calibration folder (inside Color Files folder)	<p>Four PostScript measurements files of color patches: custom21.ps, custom34.ps, standard21.ps, and standard34.ps. The numbers in the filenames refer to the number of patches on the page.</p> <p>The Custom files are provided to enable you to download measurement patches that incorporate the copier's current calibration set. The Standard files are provided to enable you to download standard measurement patches that ignore the copier's current calibration set.</p> <p>NOTE: These files are provided for expert users and should not be used for day-to-day calibration.</p>
Demo.meas	<p>Demo Measurement, a sample measurements file for use with Fiery Print Calibrator. This file is for <i>demonstration purposes only</i> and should not be used to calibrate the Fiery X2.</p>

## Installing files for Adobe Photoshop

If you intend to use Adobe Photoshop, install the Separation Tables and the monitor settings file for best color printing results. These files are located on the User Software CD in the Photoshop folder.

NOTE: For best results, the monitor settings file should be installed if you use Fiery Scan.

### Loading the Separation Tables

The Separation Tables enable RGB-to-CMYK conversions (in Photoshop), which correspond to conversions performed by color rendering dictionaries on the Fiery X2.

---

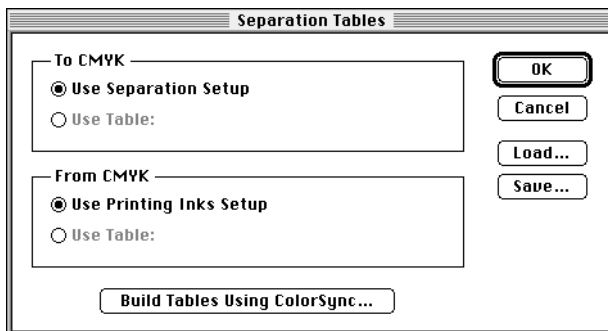
#### TO LOAD THE SEPARATION TABLES:

1. On the User Software CD, open the Photoshop folder.
2. Copy the appropriate files for your copier to the Adobe Photoshop folder.
  - For the 5750, copy the files Fiery X2 5750.P and Fiery X2 5750.S.
  - For the 5790, copy the files Fiery X2 5790.P and Fiery X2 5790.S.
  - For the 5799, copy the files Fiery X2 5799.P and Fiery X2 5799.S.
3. Launch Photoshop.

- For Photoshop 4.0, from the File menu, choose Color Settings, and from the Color Settings submenu, choose Separation Tables.

For Photoshop 3.0 or Photoshop 2.5, from the File menu, choose Preferences, and from the Preferences submenu, choose Separation Tables.

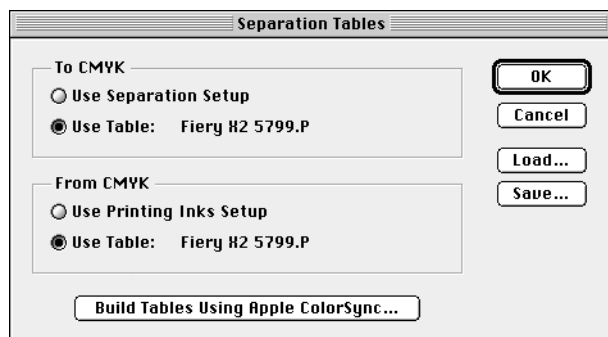
- In the Separation Tables dialog box, click Load.



- Browse to your Adobe Photoshop folder, select the appropriate Separation Table file, and click Open.

Select the <copier model>.P file for separating *photographic* RGB images to CMYK. Select the <copier model>.S file for separating *solid color* RGB images to CMYK.

- Verify that the file you selected appears after "Use Table:" in both places and click OK.



Separation tables remain loaded the next time you start Photoshop, unless you remove them.

### Loading the monitor settings file

The Calibrated RGB monitor settings file for Photoshop defines the source color space for printing to the Fiery X2.

**NOTE:** For best results, the monitor settings file should be installed if you use Fiery Scan.

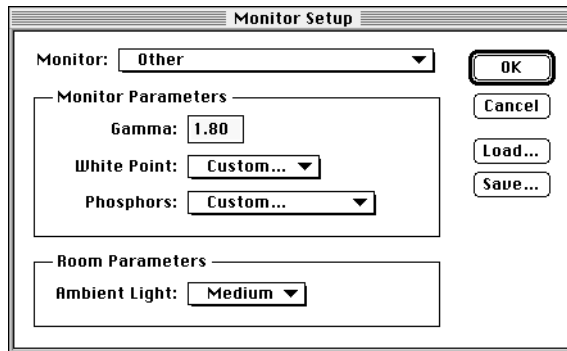
---

#### TO LOAD THE MONITOR SETTINGS FILE:

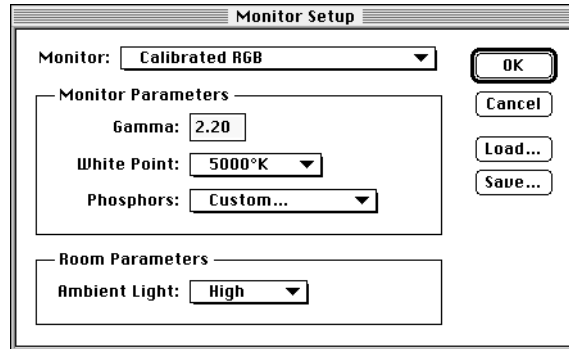
1. On the User Software CD, open the Photoshop folder.
2. Copy the Calibrated RGB file to your Adobe Photoshop folder.
3. Launch Photoshop.
4. For Photoshop 4.0, from the File menu, choose Color Settings, and from the Color Settings submenu, choose Monitor Setup.

For Photoshop 3.0 and Photoshop 2.5, from the File menu, choose Preferences, and from the Preferences submenu, choose Monitor Setup.

5. In the Monitor Setup dialog box, click Load.



6. Browse to your Adobe Photoshop folder, select the Calibrated RGB file, and click Open. The Calibrated RGB file appears as the selection in the Monitor pop-up menu of the Monitor Setup dialog box.



7. Under Room Parameters, set Ambient Light to High and click OK.





## Downloading Installers with Fiery WebTools

Fiery WebTools allow you to manage your Fiery X2 remotely from the Internet or from your company's intranet. The Fiery X2 has its own home page, from which you are able to select from a variety of functions including WebSetup, Status, WebSpooler, WebLink, and Installer.

For more information on using Fiery WebTools, see the *User Guide*.

## Setting up Fiery WebTools

In order for network users to access and use Fiery WebTools, you need to set certain Fiery X2 options in Setup from the Control Panel. You also need to prepare each user's workstation to communicate with the Fiery X2 over the Internet or intranet.

For more information about Fiery X2 Setup, see the *Administrator Guide*.

---

TO VERIFY THAT FIERY WEBTOOLS ARE SET UP ON THE FIERY X2:

1. **Print the Configuration page from the Control Panel.**  
For instructions, see the *User Guide*.
2. **On the Configuration page, check the following:**
  - In Network Setup>Port Setup, confirm that the appropriate network type (Ethernet or Token Ring) is enabled.
  - In Network Setup>Protocol Setup>TCP/IP Setup, confirm that TCP/IP is enabled and that there is a valid, unique IP Address for the Fiery X2.
  - In Network Setup>Service Setup, confirm that Web Services are enabled.
  - In Printer Setup, confirm that the Print Queue is published.
3. **If all the conditions listed in Step 2 are currently set, the Fiery X2 is properly set up to use Fiery WebTools.**

If any of the conditions listed in Step 2 are not currently set, you must change them (as described in the *Administrator Guide*) before you can use Fiery WebTools.

---

**TO SET UP FIERY WEBTOOLS ON EACH USER'S WORKSTATION:**

1. Enable TCP/IP networking.
2. Make sure the workstation has a valid, unique IP address.
3. Make sure the workstation is installed with one of the following Internet browsers:  
Windows 95 and Windows NT—*Either* Netscape Communicator v4.0.4 *or* Microsoft Internet Explorer v3.0.2  
Mac OS—Netscape Communicator v4.0.4  
  
NOTE: Netscape and Microsoft continue to release frequent updates to their browsers. As support cannot be guaranteed for all versions, use the versions specified above for best results.
4. Make sure Java is enabled in your Internet browser.  
For more information on setting up the Fiery X2 and your network, see the *Administrator Guide*.

## Using the Installer WebTool

The Installer WebTool duplicates the printer driver installers on the User Software CD, allowing you to easily download the current version of printer files from the Fiery X2 to your workstation.

---

**TO DOWNLOAD THE PRINTER FILES INSTALLERS WITH THE INSTALLER WEBTOOL:**

1. Launch your Internet or intranet browser and enter the DNS name or IP address of the Fiery X2.
2. Select a login level, enter a password if necessary, and click OK.  
No password is required to log in as Guest. You have full access to the Installer WebTool when logged in as Guest.

3. Click the Installer button.



4. Under the name of your operating system, click "Printer Files."

For Windows computers, a dialog box appears, prompting you to save the file "Prntdrv.exe" to the location you choose.

For Mac OS computers, a folder named "Printer Driver" is downloaded to the desktop in a BinHex-encoded, compressed format. If your internet browser is equipped with an expander utility such as StuffIt Expander, the folder will be decoded and decompressed automatically.

5. For Windows computers, browse to the location where you want to save the Prntdrv.exe file and click Save.

For Mac OS computers, if the Printer Driver folder was not automatically decoded and decompressed, launch a utility that will perform that function.

6. For Windows computers, double-click the Prntdrve.exe file, browse to the location where you want to install the Prntdrv folder, and click Next.

The Prntdrv folder is installed to the location you specified.

7. Install the appropriate printer files for your operating system.

For instructions:	See:
Windows 95	“Setting up PostScript printing with Windows 95” on page 3
Windows 3.1x	“Setting up PostScript printing with Windows 3.1x” on page 17
Windows NT 4.0	“Setting up PostScript printing with Windows NT 4.0” on page 21
Mac OS computers	“Setting up PostScript printing with Mac OS” on page 50.

## Troubleshooting

This chapter provides troubleshooting tips.

### On a Windows computer

#### Setting up IPX (Novell) printing for Windows NT Workstation

If you have problems installing the Fiery X2 with Windows NT, try installing another PostScript printer (such as the Apple LaserWriter IIg), and then install the Fiery X2. Installing another printer insures that all files are properly installed and available. For instructions, see your Windows NT documentation.

#### Installing the Adobe PostScript Printer Driver

If you are reinstalling the Adobe PostScript Printer Driver, delete any previous versions and related files before installing. Search for and delete all files named Efm<sup>x</sup>\*.\* in the Windows\System folder and the Windows\System\Color folder. See the Adobe README file included with the printer driver for more information.

#### Problems with the Fiery utilities on Windows 95 or Windows NT

1. If you are using Windows 95, make sure that IPX/SPX and TCP/IP networking protocols are both enabled.

See “Completing the Windows 95 IPX/SPX or IPX (Novell) connection” on page 10.

2. Make sure that the connection is configured correctly for your site.

To check the current configuration, launch a Fiery utility and choose Open from the File menu. Select the Fiery X2 and click Modify to see current settings. If the settings are incorrect, you can change them in this dialog box.

## On a Mac OS computer

### Setting up the Fiery X2 in the Chooser

If auto-setup does not work and you are prompted to select the PPD, select the appropriate Fiery X2 file in your System Folder:Extensions:Printer Descriptions folder.

For the 5750, select Fiery X2 5750 v3010.104.

For the 5790, select Fiery X2 5790 v3010.104.

For the 5799, select Fiery X2 5799 v3010.104.

### Installing screen fonts

If you experience problems installing the PostScript screen fonts from the User Software CD to the System Folder:Fonts folder, try the following:

1. Quit all applications and close all windows.
2. Create a new folder and name it "Uninstalled Fonts."  
This folder must be located outside of the System Folder.
3. Move fonts that you are not using from the System Folder:Fonts folder to the Uninstalled Fonts folder.
4. Continue to copy fonts from the User Software CD to the System Folder:Fonts folder.
5. Create an alias to the System Folder:Fonts folder and to the Uninstalled Fonts folder.
6. Place both aliases on your desktop.
7. When necessary, use the aliases to open both folders and move fonts between them.  
If you have any applications running, you must quit and relaunch them in order to view and use the newly installed fonts.

Alternately, you can try combining fonts from multiple suitcases into a single suitcase.

# Index

## A

- Adobe PostScript 3 fonts x
- Adobe PostScript printer driver, *see* PostScript printer driver
- AppleTalk
  - connecting to Mac OS 49
  - installed with Windows NT 4.0 xiv
  - supported by color server x

## B

- Berkeley lpd protocol xv
- BMP images 43

## C

- cable, color server x
- Calibration folder 46
- Calrgb.ams 44, 45 to 46
- Chooser
  - selecting the server in 49
  - setting up color server in 66
- Clrfiles folder 42
- CMYK color reference file 2, 42, 48, 55
- Color Files folder 55, 56
- color management files x, xii
- color reference files xii, 2, 42, 48, 55
- color rendering dictionaries, *see* CRDs
- color server specifications x
- ColorSync color management files xii
- ColorSync Profiles
  - installer 47
  - installing 53
- ColorWise color management files x
- Configuration page 13, 37
- connecting
  - Windows 3.1x using IPX (Novell) 20
  - Windows 95 using IPX/SPX or IPX (Novell) 10
  - Windows 95 via parallel port 6

- Windows 95 using SMB printing
- Windows NT 4.0 using IPX (Novell) 30
- Windows NT 4.0 via parallel port 27
- Windows NT 4.0 using TCP/IP 28

- connection, configuring 37 to 41
- CRDs (color rendering dictionaries) 42
- custom21.ps (Mac OS) 56
- custom21.ps (Windows) 43
- custom34.ps (Mac OS) 56
- custom34.ps (Windows) 43

## D

- DB-25 connector xv
- Demo.mea file 43, 56
- device name 30, 38, 40
- DNS name xiii, xv, 38, 40
- Domain Name Server (DNS) 37

## E

- EFIRGB ICC 54
- EPS files xi
- Ethernet 100BaseTX cable x
- Ethernet 10BaseT cable x
- EtherTalk xiv

## F

- Fast Ethernet 100BaseTX cable x
- Fiery Downloader
  - EPS files xi
  - installer for Mac OS 47
  - installer for Windows 1
  - installing for Mac OS 53
  - installing for Windows 33 to 34
  - overview xi
  - PDF files xi
- Fiery Print Calibrator
  - installer for Mac OS 47
  - installer for Windows 1
  - installing for Mac OS 53

- installing for Windows 33 to 34
    - overview xi
  - Fiery Scan Plug-in for Photoshop
    - installer for Mac OS 47
    - installer for Windows 1, 32
    - installing for Mac OS 53
    - installing for Windows 36
    - overview xi
    - requirements xiii
    - system requirements xv
  - Fiery Spooler
    - configuring the connection 40 to 41
    - installer for Mac OS 47
    - installer for Windows 1
    - installing for Mac OS 53
    - installing for Windows 34
    - overview xi
    - supported protocols xiv
  - Fiery TWAIN module xi, 36, 51
  - Fiery utilities
    - configuring the connection 37 to 41
    - installing for Mac OS 51
    - installing for Windows 32
    - problems on Windows 95 or Windows NT 65
    - requirements for Mac OS xv
    - requirements for Windows xiii
    - See also* Fiery Downloader, Fiery Print Calibrator, Fiery Spooler
  - Fiery WebTools
    - Installer xi, 2, 3, 23, 62 to 64
    - setting up 61
    - system requirements xiii, xv
    - version of browser required xiii, 62
  - fonts
    - Adobe PostScript 3 x
    - Adobe Type 1 xi
    - installing 47, 48
    - Multiple Master x
    - screen fonts xi, 54 to 58
    - substituting in PDF files x
    - troubleshooting 66
    - TrueType x, xi
  - Fonts folder 66
  - Frame Type option 11
- I**
- i386 folder 26
  - ICM color management files xii
  - Icm folder (Windows) 42
  - ICM printer profiles 2, 42, 43
  - installers
    - Mac OS 47, 48
    - Windows 1, 2
  - Installers folder 47
  - Installer WebTool, *see* Fiery WebTools
  - installing
    - ColorSync Profiles 52
    - Fiery Downloader (Mac OS) 52
    - Fiery Downloader (Windows) 33 to 34
    - Fiery Print Calibrator (Mac OS) 52
    - Fiery Print Calibrator (Windows) 33 to 34
    - Fiery Scan Plug-in (Mac OS) 52
    - Fiery Scan Plug-in (Windows) 36
    - Fiery Spooler (Mac OS) 52
    - Fiery Spooler (Windows) 35
    - ICM profile 43
    - PostScript printer driver (Mac OS) 49
    - PostScript printer driver (Windows 3.1x) 17
    - PostScript printer driver (Windows 95) 3 to 6
    - screen fonts 54 to 58
    - software for Mac OS 51
    - software for Windows 32
    - TWAIN module (Windows) 36
  - Instalrs folder 1
  - internal name 30
  - Internet Explorer xiii, 62
  - IP address xiii, xv, 13, 37



**IPX**

- system requirements xvi
- Windows 3.1x 20 to 21
- Windows 95 12
- Windows NT 4.0 30, 31 to 32

IPX address 37

**IPX/SPX**

- configuring the connection 37
- Windows 95 10

**J**

Java 62

JPEG images 43

**M****Mac OS**

- copying color files 55
- Installer WebTool 48
- installing Fiery utilities 51
- installing software 52
- Power Macintosh xv
- screen fonts 54 to 58
- system requirements xiv
- troubleshooting 66
- memory, amount required xiii, xiv, xv
- Microsoft Office 97, *see* Office 97
- modifying the configuration (Windows) 41
- monitor settings file
  - Mac OS 58 to 59
  - Windows 45 to 46
- MS-DOS, versions required xiv

**N**

- Netscape Communicator xiii, 62
- NetWare
  - network port with Windows 3.1x 21
  - network port with Windows 95 12
- NetWare client setup
  - Windows 3.1x 20
  - Windows 95 10, 12
- NetWise networking features x
- Ntprint.inf file 23

**O**

Office 97 43

**P**

- PANTONE color reference files 2, 42, 48, 55
- parallel port
  - system requirements xv
  - Windows 3.1x 19 to 20
  - Windows 95 7 to 10
  - Windows NT 4.0 28 to 31
- PDF files x, xi
- Photoshop
  - files (Mac OS) 48, 55
  - files (Windows) 2, 42
  - plug-ins xi
  - version 2.5 or later required for Fiery Scan plug-in xiii
- Photoshop folder 55
- Photoshop Separation Tables
  - Mac OS 56 to 58
  - Windows 44 to 45
- Photoshp folder (Windows) 42
- PostScript
  - printing with Mac OS 48
  - printing with Windows 3.1x 16
  - printing with Windows 95 3
  - printing with Windows NT 4.0 21
  - screen fonts xi
- PostScript Level 1 x
- PostScript Printer Description file, *see* PPD
- PostScript printer driver
  - downloading 62 to 64
  - installer for Mac OS 47, 49
  - installers for Windows 1
  - version 3.0 for Windows 3.1x xiv
  - version 4.2 for Windows 95 xiv
  - version 8.5 for Mac OS xiv
  - Windows 3.1x 17
  - Windows 95 3 to 6
- PowerPoint, RGB color reference file 48, 55

**PPD**

- Mac OS 49
- overview xi
- Windows 3.1x 17
- Windows 95 5
- Windows NT 4.0 24

Print command (Windows) 18

printer drivers, *see* Postscript printer drivers,  
Windows NT 4.0 printer drivers

printing

- Mac OS 48
- Windows 3.1x 16
- Windows 95 3
- Windows NT 4.0 27

Print Test Page option 16

Prntdrv.exe file 64

**R**

remote server management 61  
RGB color reference files 2, 42, 55

**S**

Separation Tables *see* Photoshop Separation  
Tables

Server Name 13

SMB printing, *see* Windows 95

Solaris, supported version xv

specifications, color server x

Spooler, *see* Fiery Spooler

stand21.ps (Windows) 43

stand34.ps (Windows) 43

standard21.ps (Mac OS) 56

standard34.ps (Mac OS) 56

SunOS, support version xv

System 7 xiv, *see also* Mac OS

system requirements

- IPX xvi
- Mac OS xiv
- parallel port xv
- UNIX xv
- Windows xiii

**T**

TCP/IP

- configuring the connection 37
- printing software conforming to  
RFC1179 xv
- supported by color server x

test page 16

thicknet cable x

thinnet cable x

TIFF images 43

Token Ring, optional kit x

troubleshooting

- Mac OS computers 66
- Windows computers 65

TWAIN folder 51

**U**

Uninstalled Fonts folder 66

UNIX workstations, system requirements xv

unshielded twisted pair (UTP) cable x

User Software CD

- Adobe PS Printer Driver xi
- contents (Mac OS) 47, 48
- contents (Windows) 1, 2, 32
- installing from (Mac OS) 49, 55
- installing from (Windows) 3, 42
- overview xi
- troubleshooting fonts 66

**W**

WebSpooler, *see* Fiery WebSpooler

WebTools, *see* Fiery WebTools

Windows

- copying color files 42
- installers 1
- installing software 32
- system requirements xiii
- troubleshooting 65

- Windows 3.1x
  - configuration ports on 18
  - connection 18
  - IPX printing 20 to 21
  - PostScript printer driver 17
  - PPD 17
  - selecting parallel port 19 to 20
  - setting default printer 18
  - system requirements xiv
- Windows 95
  - IPX/SPX 10
  - parallel port 7 to 10
  - PostScript printer driver 3 to 6
  - SMB printing 13 to 16
- Windows NT 4.0
  - IPX 31 to 32
  - printer driver 2, 22
  - printing from parallel port 28 to 31
  - printing requirements 27
  - system requirements xiv
  - setting up PostScript printing 21
  - troubleshooting 65
- Windows NT Installation CD 26
- WINS Name Server 13, 16
- Word, RGB color reference file 48, 55

