

Fiery XJ+ 325 Color Server

GETTING STARTED

Xerox digital copier printers



Copyright © 1997 Electronics for Imaging, Inc. All rights reserved.

This publication is protected by copyright, and all rights are reserved. No part of it may be reproduced or transmitted in any form or by any means for any purpose without express prior written consent from Electronics for Imaging, Inc., except as expressly permitted herein. Information in this document is subject to change without notice and does not represent a commitment on the part of Electronics for Imaging, Inc.

The software described in this publication is furnished under license and may only be used or copied in accordance with the terms of such license.

Trademarks

EFI, the EFI logo, Fiery, the Fiery logo, EFICOLOR and the EFICOLOR logo are trademarks registered in the U.S. Patent and Trademark Office. Fiery XJ, Fiery XJe, Fiery XJ+, Fiery Driven, the Fiery Driven logo, XJ RipChips, Rip-While-Print, Continuous Print, Command WorkStation, AutoCal, STARR Compression, and Memory Multiplier are trademarks of Electronics for Imaging, Inc.

XEROX 5760, 5765, 5790, MajestiK, Regal, and all Xerox product names mentioned in this publication are trademarks of the XEROX CORPORATION.

Adobe, the Adobe logo, Adobe Illustrator, PostScript, Adobe Photoshop, Adobe Separator, and Adobe PageMaker are registered trademarks of Adobe Systems Incorporated, registered in certain jurisdictions. EPS (Encapsulated PostScript) is a trademark of Altsys Corporation. Apple, the Apple logo, AppleShare, AppleTalk, EtherTalk, LaserWriter, and Macintosh are registered trademarks, and MultiFinder is a trademark of Apple Computer, Inc. Microsoft, MS, MS-DOS, and Windows are registered trademarks of Microsoft in the US and other countries. QuarkXPress is a registered trademark of Quark, Inc. Times, Helvetica, and Palatino are trademarks of Linotype AG and/or its subsidiaries. ITC Avant Garde, ITC Bookman, ITC Zapf Chancery, and ITC Zapf Dingbats are registered trademarks of International Typeface Corporation. Ethernet is a registered trademark of Xerox Corporation. Farallon, PhoneNET PC, and PhoneNET Talk are trademarks of Farallon Computing, Inc. COPS and COPS Talk are trademarks of CoOperative Printing Solutions, Inc. NetWare and Novell are registered trademarks and Internetwork Packet Exchange (IPX) is a trademark of Novell, Inc. SyQuest is a registered trademark, in the United States and certain other countries, of SyQuest Technology, Inc. UNIX is a registered trademark of UNIX System Laboratories, a wholly owned subsidiary of Novell, Inc. PANTONE is a registered trademark of Pantone, Inc.

All other terms and product names may be trademarks or registered trademarks of their respective owners, and are hereby acknowledged.

Legal Notices

APPLE COMPUTER, INC. ("APPLE") MAKES NO WARRANTIES, EXPRESS OR IMPLIED, INCLUDING WITHOUT LIMITATION THE IMPLIED WARRANTIES OF MERCHANTABILITY AND FITNESS FOR A PARTICULAR PURPOSE, REGARDING THE APPLE SOFTWARE. APPLE DOES NOT WARRANT, GUARANTEE, OR MAKE ANY REPRESENTATIONS REGARDING THE USE OR THE RESULTS OF THE USE OF THE APPLE SOFTWARE IN TERMS OF ITS CORRECTNESS, ACCURACY, RELIABILITY, CURRENTNESS, OR OTHERWISE. THE ENTIRE RISK AS TO THE RESULTS AND PERFORMANCE OF THE APPLE SOFTWARE IS ASSUMED BY YOU. THE EXCLUSION OF IMPLIED WARRANTIES IS NOT PERMITTED BY SOME STATES. THE ABOVE EXCLUSION MAY NOT APPLY TO YOU.

IN NO EVENT WILL APPLE, ITS DIRECTORS, OFFICERS, EMPLOYEES OR AGENTS BE LIABLE TO YOU FOR ANY CONSEQUENTIAL, INCIDENTAL OR INDIRECT DAMAGES (INCLUDING DAMAGES FOR LOSS OF BUSINESS PROFITS, BUSINESS INTERRUPTION, LOSS OF BUSINESS INFORMATION, AND THE LIKE) ARISING OUT OF THE USE OR INABILITY TO USE THE APPLE SOFTWARE EVEN IF APPLE HAS BEEN ADVISED OF THE POSSIBILITY OF SUCH DAMAGES. BECAUSE SOME STATES DO NOT ALLOW THE EXCLUSION OR LIMITATION OF LIABILITY FOR CONSEQUENTIAL OR INCIDENTAL DAMAGES, THE ABOVE LIMITATIONS MAY NOT APPLY TO YOU. Apple's liability to you for actual damages from any cause whatsoever, and regardless of the form of the action (whether in contract, tort [including negligence], product liability or otherwise), will be limited to \$50.

Restricted Rights Legends

For defense agencies: Restricted Rights Legend. Use, reproduction, or disclosure is subject to restrictions set forth in subparagraph (c)(1)(ii) of the Rights in Technical Data and Computer Software clause at 252.227.7013.

For civilian agencies: Restricted Rights Legend. Use, reproduction, or disclosure is subject to restrictions set forth in subparagraph (a) through (d) of the commercial Computer Software Restricted Rights clause at 52.227-19 and the limitations set forth in Electronics for Imaging, Inc.'s standard commercial agreement for this software. Unpublished rights reserved under the copyright laws of the United States.

Printed in the United States of America on recycled paper.

Part Number: 10012864

CE Mark

The CE marking applied to this product symbolises Rank Xerox's declaration of conformity with the following applicable directives of the European Union as of the dates indicated.

January 1, 1996—Council Directive 70/80/CCO amended by Council Directive 93/68/EEO. Approximation of the laws of the member states related to low voltage equipment.

January 1, 1996—Council Directive 59/336/EEC. Approximation of the laws of the member states related to electromagnetic compatibility.

A full declaration defining the relevant directives and referenced standards can be obtained from your Rank Xerox representative.

WARNING: In order to allow this equipment to operate in proximity to industrial, scientific, and Medical (ISM) equipment, the external radiation from ISM equipment may have to be limited or special migration measures taken.

WARNING: This is a Class A product. In a domestic environment this product may cause radio interference, in which case the user may be required to take adequate measures.

FCC Information

WARNING: FCC Regulations state that any unauthorized changes or modifications to this equipment not expressly approved by the manufacturer could void the user's authority to operate this equipment.

NOTE: This equipment has been tested and found to comply with the limits for a Class A digital device, pursuant to Part 15 of the FCC Rules. These limits are designed to provide reasonable protection against harmful interference when the equipment is operated in a commercial environment. This equipment generates, and uses, and can radiate radio frequency energy and, if not installed and used in accordance with the instruction manual, may cause harmful interference to radio communications. Operation of this equipment in a residential area is likely to cause interference in which case the user will be required to correct the interference at his own expense.

Industry Canada Class A Notice

This digital apparatus does not exceed the Class A limits for radio noise emissions from digital apparatus as set out in the interference-causing equipment standard entitled, "Digital Apparatus" ICES-003 from Industry Canada.

Avis de Conformation Classe A d l'Industrie Canada

Le présent appareil numérique n'émet pas de bruits radioélectriques dépassant les limites applicables aux appareils numériques de la Classe A prescrites dans la norme sur le matériel brouilleur, "Appareils Numériques" NMB-003 édictée par l'Industrie Canada.

RFI Compliance Notice

This equipment has been tested concerning compliance with the relevant RFI protection requirements both individually and on system level (to simulate normal operation conditions). However, it is possible that these RFI Requirements are not met under certain unfavorable conditions in other installations. It is the user who is responsible for compliance of his particular installation.

Dieses Gerät wurde einzeln sowohl als auch in einer Anlage, die einen normalen Anwendungsfall nachbildet, auf die Einhaltung der Funk-entstörbestimmungen geprüft. Es ist jedoch möglich, dass die Funk-entstörbestimmungen unter ungunstigen Umständen bei anderen Gerätekombinationen nicht eingehalten werden. Für die Einhaltung der Funk-entstörbestimmungen der gesamten Anlage, in der dieses Gerät betrieben wird, ist der Betreiber verantwortlich.

Compliance with applicable regulations depends on the use of shielded cables. It is the user who is responsible for procuring the appropriate cables.

Einhaltung mit betreffenden Bestimmungen kommt darauf an, dass geschirmte Ausführungen gebraucht werden. Für die Beschaffung richtiger Ausführungen ist der Betreiber verantwortlich.

Software License Agreement

Electronics for Imaging, Inc. grants to you a non-exclusive, non-transferable license to use the software and accompanying documentation ("Software") included with the Fiery XJ Color Server you have purchased, including without limitation the PostScript® software provided by Adobe Systems Incorporated.

You may:

- a. use the Software solely for your own customary business purposes and solely with Fiery XJ;
- b. use the digitally-encoded machine-readable outline and bitmap programs ("Font Programs") provided with Fiery XJ in a special encrypted format ("Coded Font Programs") to reproduce and display designs, styles, weights, and versions of letters, numerals, characters and symbols ("Typefaces") solely for your own customary business purposes on the screen of the Fiery XJ or Macintosh monitor used with Fiery XJ;
- c. use the trademarks used by Electronics for Imaging to identify the Coded Font Programs and Typefaces reproduced therefrom ("Trademarks"); and
- d. assign your rights under this Agreement to a transferee of all of your right, title and interest in and to Fiery XJ provided the transferee agrees to be bound by all of the terms and conditions of this Agreement.

You may not:

- a. make use of the Software, directly or indirectly, to print bitmap images with print resolutions of 600 dots per inch or greater, or to generate fonts or typefaces for use other than with Fiery XJ;
- b. make or have made, or permit to be made, any copies of the Software, Coded Font Programs, accompanying documentation or portions thereof, except as necessary for use with the Fiery XJ unit purchased by you; provided, however, that under no circumstances may you make or have made, or permit to be made, any copies of that certain portion of the Software which has been included on the Fiery XJ hard disk drive. You may not copy the documentation;
- c. attempt to alter, disassemble, decrypt or reverse engineer the Software, Coded Font Programs or accompanying documentation;
- d. rent or lease the Software.

Proprietary Rights

You acknowledge that the Software, Coded Font Programs, Typefaces, Trademarks and accompanying documentation are proprietary to Electronics for Imaging and its suppliers and that title and other intellectual property rights therein remain with Electronics for Imaging and its suppliers. Except as stated above, this Agreement does not grant you any right to patents, copyrights, trade secrets, trademarks (whether registered or unregistered), or any other rights, franchises or licenses in respect of the Software, Coded Font Programs, Typefaces, Trademarks or accompanying documentation. You may not adapt or use any trademark or trade name which is likely to be similar to or confusing with that of Electronics for Imaging or any of its suppliers or take any other action which impairs or reduces the trademark rights of Electronics for Imaging or its suppliers. The trademarks may only be used to identify printed output produced by the Coded Font Programs. At the reasonable request of Electronics for Imaging, you must supply samples of any Typeface identified with a trademark.

The MacApp software is proprietary to Apple Computer, Inc. and is licensed to Electronics for Imaging, Inc. for distribution only for use in combination with Fiery XJ software utilities.

Confidentiality

You agree to hold the Software and Coded Font Programs in confidence, disclosing the Software and Coded Font Programs only to authorized users having a need to use the Software and Coded Font Programs as permitted by this Agreement and to take all reasonable precautions to prevent disclosure to other parties.

Remedies

Unauthorized use, copying or disclosure of the Software, Coded Font Programs, Typefaces, Trademarks or accompanying documentation will result in automatic termination of this license and will make available to Electronics for Imaging other legal remedies.

Limited Warranty and Disclaimer

Electronics for Imaging warrants that, for a period of ninety (90) days from the date of delivery to you, the Software under normal use will perform without significant errors that make it unusable. Electronics for Imaging's entire liability and your exclusive remedy under this warranty (which is subject to you returning Fiery XJ to Electronics for Imaging or an authorized dealer) will be, at Electronics for Imaging's option, to use reasonable commercial efforts to attempt to correct or work around errors, to replace the Software with functionally equivalent software, or to refund the purchase price and terminate this Agreement. Some states do not allow limitations on duration of implied warranty, so the above limitation may not apply to you.

Except for the above express limited warranty, Electronics for Imaging makes and you receive no warranties or conditions on the Products, express, implied, or statutory, and Electronics for Imaging specifically disclaims any implied warranty or condition of merchantability or fitness for a particular purpose.

For warranty service, please contact your authorized service/support center.

EXCEPT FOR THE ABOVE EXPRESS LIMITED WARRANTY, ELECTRONICS FOR IMAGING MAKES AND YOU RECEIVE NO WARRANTIES OR CONDITIONS ON THE SOFTWARE OR CODED FONT PROGRAMS, EXPRESS, IMPLIED, STATUTORY, OR IN ANY OTHER PROVISION OF THIS AGREEMENT OR COMMUNICATION WITH YOU, AND ELECTRONICS FOR IMAGING SPECIFICALLY DISCLAIMS ANY IMPLIED WARRANTY OR CONDITION OF MERCHANTABILITY OR FITNESS FOR A PARTICULAR PURPOSE. Electronics for Imaging does not warrant that the operation of the software will be uninterrupted or error free or that the Software will meet your specific requirements.

Limitation of Liability

IN NO EVENT WILL ELECTRONICS FOR IMAGING OR ITS SUPPLIERS BE LIABLE FOR ANY DAMAGES, INCLUDING LOSS OF DATA, LOST PROFITS, COST OF COVER OR OTHER SPECIAL, INCIDENTAL, CONSEQUENTIAL OR INDIRECT DAMAGES ARISING FROM THE USE OF THE SOFTWARE, CODED FONT PROGRAMS OR ACCOMPANYING DOCUMENTATION, HOWEVER CAUSED AND ON ANY THEORY OF LIABILITY. THIS LIMITATION WILL APPLY EVEN IF ELECTRONICS FOR IMAGING OR ANY AUTHORIZED DEALER HAS BEEN ADVISED OF THE POSSIBILITY OF SUCH DAMAGE. YOU ACKNOWLEDGE THAT THE PRICE OF FIERY XJ REFLECTS THIS ALLOCATION OF RISK. BECAUSE SOME STATES/JURISDICTIONS DO NOT ALLOW THE EXCLUSION OR LIMITATION OF LIABILITY FOR CONSEQUENTIAL OR INCIDENTAL DAMAGES, THE ABOVE LIMITATION MAY NOT APPLY TO YOU.

Export Controls

You agree that you will not export or re-export the Software or Coded Font Programs in any form without the appropriate United States and foreign government licenses. Your failure to comply with this provision is a material breach of this Agreement.

Government Use

Use, duplication or disclosure of the Software by the United States Government is subject to restrictions as set forth in subdivision (c) (1) (ii) of the Rights in Technical Data and Computer Software clause at DFARS 252.227-7013 or in subparagraphs (c) (1) and (2) of the Commercial Computer Software—Restricted Right Clause at 48 CFR 52.227-19, as applicable.

Third Party Beneficiary

You are hereby notified that Adobe Systems Incorporated, a California corporation located at 303 Almaden Blvd., San Jose, CA 95110 ("Adobe") is a third-party beneficiary to this Agreement to the extent that this Agreement contains provisions which relate to your use of the Fonts, the Coded Font Programs, the Typefaces and the Trademarks licensed hereby. Such provisions are made expressly for the benefit of Adobe and are enforceable by Adobe in addition to Electronics for Imaging.

General

This Agreement will be governed by the laws of the State of California.

This Agreement is the entire agreement held between us and supersedes any other communications or advertising with respect to the Software, Coded Font Programs and accompanying documentation.

If any provision of this Agreement is held invalid, the remainder of this Agreement shall continue in full force and effect.

If you have any questions concerning this Agreement, please write to Electronics for Imaging, Inc., Attn: Licensing Dept. or see Electronics for Imaging's web site at www.efi.com.

Electronics for Imaging, Inc.
2855 Campus Drive
San Mateo, CA 94403

Contents

Introduction

About the media pack	ix
About the documentation	ix
System requirements for Macintosh users	x
System requirements for PC users	x
With Windows 3.1x	xi
With Windows 95	xi
With Windows NT	xi
User software	xi

Installing user software on a Macintosh computer

Installing Macintosh software	1
Copying files from the Color Files folder	9
Color management files	10
Setting up the Fiery XJ as a PostScript printer	13
Setting up the Fiery XJ in the Chooser	14

Installing user software on a PC-compatible computer

Installing Windows software	15
Using the Fiery XJ utilities for the first time	27
Windows 3.1x	27
Windows 95 and Windows NT	27
Configuring the NET_WSCK.INI file	28
Before you begin	28
Editing the NET_WSCK.INI file	31
Copying files from the Clrfiles folder	32
Color management files	33

Setting up the Fiery XJ as a PostScript printer	37
Setting up printing with Windows 3.1x	37
Setting up printing with Windows 95	42
Setting up printing from Windows NT	49

Fiery WebTools

Setting up Fiery WebTools	65
Using the WebTools Installer	66
Using the Printer Driver Installer for Macintosh	69

Troubleshooting

On a Macintosh computer	71
On a Windows computer	71

Index

Introduction

This manual describes how to install the user software for the Fiery XJ Color Server™ and set up printing from Apple® Macintosh® and PC-compatible computers. For information on setting up network servers and clients to use the Fiery XJ, see the *Administrator Guide*. For general information on using the color copier, your computer, your application software, or your network, see the manuals that accompany those products.

About the media pack

Your Fiery XJ comes with a media pack, which includes:

- User Software CD—utilities, plug-ins, color files, printer drivers, and printer files you can install directly onto Macintosh and PC-compatible computers
- Documentation

About the documentation

This manual is part of a set, which also includes the following manuals for users and system administrators:

- The *User Guide* describes how to set printing options and print to the Fiery XJ. This manual describes how to use the software installed from the CD. It includes sections on printing from Macintosh and PC-compatible computers and UNIX® workstations.
- The *Administrator Guide* explains basic configuration and administration of the Fiery XJ for the supported platforms and network environments. It also includes guidelines for setting up UNIX, Microsoft® Windows NT™, and Novell® NetWare® servers to provide PostScript printing services to clients.
- *Release Notes* with information about changes in the current release of system and user software and guidelines for their use.

System requirements for Macintosh users

To print to the Fiery XJ from a Macintosh computer, you need:

- Any Macintosh, Quadra™, or Power Macintosh model that has at least 4MB of RAM and EtherTalk® Phase 2 installed.
- A CD-ROM drive to install the user software.
- Apple System software version 7.0 or later.
- Adobe® PostScript® Printer Driver version 8.0 or later (version 8.3 is included with the Fiery XJ user software), or Apple LaserWriter® driver version 7.x or later.

NOTE: The Fiery XJ does not support Apple LaserWriter driver version 8.4, which is included with Apple System software version 7.6. If you are using version 7.6, install and use the Adobe PostScript Printer Driver version 8.3 included with the Fiery XJ user software.

- To use Fiery XJ Scan™ and Fiery XJ Export™, Adobe Photoshop® version 2.5 or later.
- To use the paging feature of Fiery XJ Spooler, an alphanumeric pager and PageNOW! software version 1.5 or later. In the United States and Canada, PageNOW! is available from Mark/Space Softworks: 1-800-799-1718.

System requirements for PC users

To print to the Fiery XJ from a PC-compatible, you need:

- A PC-compatible with an 80386, 80486, or Pentium processor and at least 4MB of RAM.
- A mouse supported by Windows.
- A CD-ROM drive to install the user software.
- Microsoft® Windows version 3.1 or later, Windows 95™, or Windows NT™ version 3.51 or later.
- To use Fiery XJ Scan™ and Fiery XJ Export™, Adobe Photoshop® version 2.5 or later.
- To take advantage of all PostScript Level 2 printing features of Windows 3.1x and Windows 95, you need the Adobe PostScript Printer Driver for Windows. Version 3.0.1 (for Windows 3.1x) and version 4.1.1 (for Windows 95) are included with the Fiery XJ user software.

With Windows 3.1x

- Microsoft Windows version 3.1 or later.
- IPX/SPX networking protocol set up.
- MS-DOS® version 5.0 or later.

With Windows 95

- Microsoft Windows 95 with IPX/SPX networking protocol set up.

With Windows NT

- Microsoft Windows NT with TCP/IP networking protocol set up.

User software

The User Software CD includes:

Fiery XJ Downloader™	Enables you to print PostScript and Encapsulated PostScript files directly to the Fiery XJ without using the application in which they were created. The Fiery XJ Downloader also enables you to manage the printer fonts installed on the Fiery XJ.
Fiery XJ Print Calibrator™	Enables you to keep your Fiery XJ's colors consistent across time.
Fiery XJ Spooler™	Enables you to view the order and priority of print jobs, customize printer settings for jobs, delete jobs, and move jobs between queues. You can also use it to view job accounting information.
Screen Fonts (Macintosh only)	Installs screen fonts for the 39 PostScript printer fonts installed on the Fiery XJ. Regular, bold, italic, and bold italic versions of the following fonts are included: Courier, Times, Helvetica, Helvetica Condensed, Helvetica Narrow, ITC Avant Garde Gothic, Demi, ITC Bookman, New Century Schoolbook, and Palatino. Also included are ITC Zapf Chancery, ITC Symbol, and ITC Zapf Dingbats.

Fiery XJ Scan™	A plug-in module for Adobe Photoshop that enables you to scan images from the printer directly into Photoshop.
Fiery XJ Export™	A plug-in module for Adobe Photoshop that enables you to print files from Photoshop very quickly. Fiery XJ Export bypasses the printer driver and internal Fiery XJ processing and does not generate PostScript, decreasing the time required to print the files.
Export Processor and Export Profiles (Macintosh only)	Export Processor is a system extension which is needed to launch the Fiery XJ Export plug-in on the Macintosh; Export Profiles are used to convert Macintosh RGB colors to CMYK.
Calibration files	Includes a sample measurements file that you can use with Fiery XJ Print Calibrator; also includes PostScript measurements files to enable you to download measurement patches that either incorporate or ignore the printer's current calibration set.
(Macintosh) ICC ColorSync (Windows) ICC ICM device profile(s)	Printer and monitor profiles specially designed for use with the Fiery XJ and the color management system specific to the operating system you are using.
Calibrated RGB	A file for use with Adobe Photoshop and Fiery XJ Scan. Allows you to set the proper source color space.
EFICOLOR 2.0 (Macintosh only)	Printer profiles specially designed for use with the Fiery XJ and the EFICOLOR color management system.
Photoshop Separation Tables	EFICOLOR files for use with Adobe Photoshop. Matches the RGB to CMYK conversions on your computer to the RGB to CMYK conversions on the Fiery XJ.

CMYK Color Reference	Provides a range of CMYK patches in a PostScript format. Enables you to select values for print jobs from the full range of colors that the Fiery XJ can print.
RGB Colors for MS Word and PowerPoint	Opens in MS Word or PowerPoint so you can view the colors available in the standard palette for that application, and see how the colors print on the Fiery XJ.
PANTONE coated/uncoated books	Downloadable PostScript files that simulate all of the PANTONE colors available on the Fiery XJ.
Sample pages	Downloadable PostScript image files.
Adobe PS Printer Driver	Enables you to print to the Fiery XJ and supports all special printing features and PostScript Level 2 features.
PostScript Printer Description (PPD) files	Files that allow the Fiery XJ to appear in popular applications' Print and Page Setup dialog boxes. The Fiery XJ PPD files provide information about the Fiery XJ and your particular printer model to the application and printer driver you are using to print.

Installing user software on a Macintosh computer

The general steps for installing the Fiery XJ user software from the CD and setting up printing from a Macintosh computer are:

- Install the plug-ins and utilities.
- Install the ColorSync™ printer profiles, if applicable.
- Copy additional color files from the User Software CD as needed.
- If you will be using Fiery XJ Scan, load the monitor settings file.
- If you will be using Photoshop, install the Photoshop Separation Tables for your Fiery XJ.
- Install the Adobe PostScript Printer Driver.

Installing Macintosh software

The User Software CD includes the following installers:

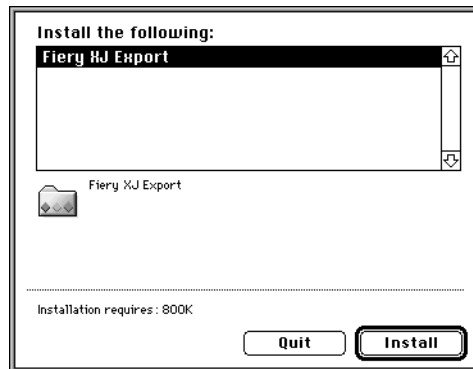
- **Fiery XJ Export Installer (Installers folder)**
Installs the Fiery XJ Export plug-in version 3.1 for Photoshop; Export Processor, which is necessary in order to run Fiery XJ Export version 3.1; and Export Profiles, which are used to convert RGB colors to CMYK.
- **Fiery XJ Scan Installer (Installers folder)**
Installs the Fiery XJ Scan plug-in version 3.1 for Photoshop.
- **Utilities Installer (Installers folder)**
Installs Fiery XJ Downloader, Fiery XJ Print Calibrator, and Fiery XJ Spooler; and basic and extended screen fonts.
- **ColorSync™ Profiles Installer (Color Files:Color Management:ColorSync™ Profiles Installer folder)**
Installs ICC printer profiles specially designed for use with the Fiery XJ; and Calibrated RGB, a file for use with Photoshop and Fiery XJ Scan that allows you to set the proper source color space.

Before installing the plug-ins, note the hard disk location and version of your Adobe Photoshop software.

TO INSTALL MACINTOSH PLUG-INS:

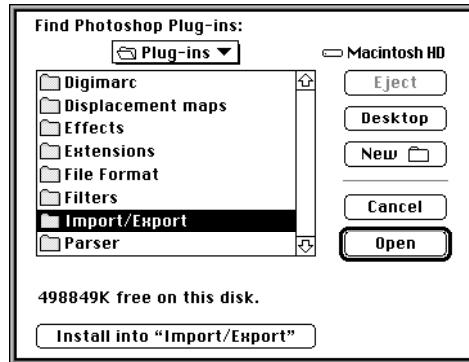
1. If you are using an external CD-ROM drive, connect it to your Macintosh.
2. Insert the User Software CD.
3. Double-click to open the Installers folder.
4. Double-click the Fiery XJ Export Installer icon.

The installer window displays the Fiery XJ Export plug-in and the amount of disk space required to install it.

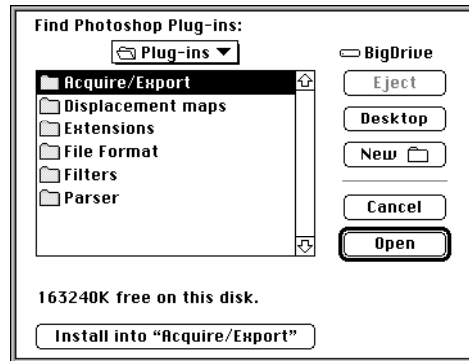


5. Click Install.

6. For Photoshop 4.0, browse to the Import/Export folder, located in the Plug-ins folder, and click Install into "Import/Export".

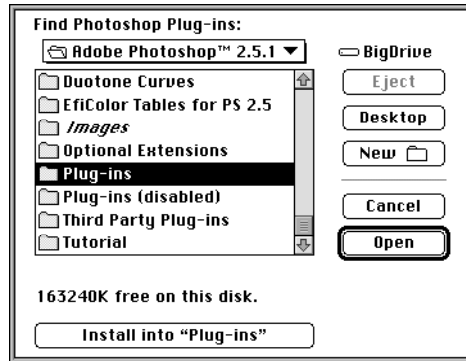


For Photoshop 3.0x, browse to the Acquire/Export folder, located in the Plug-ins folder, and click Install into "Acquire/Export".



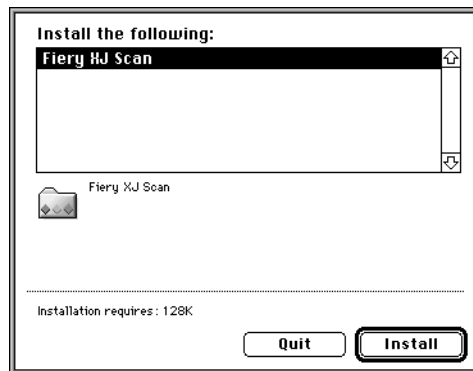
4 Installing user software on a Macintosh computer

For Photoshop 2.5, browse to the Plug-ins folder, and click Install into "Plug-ins".



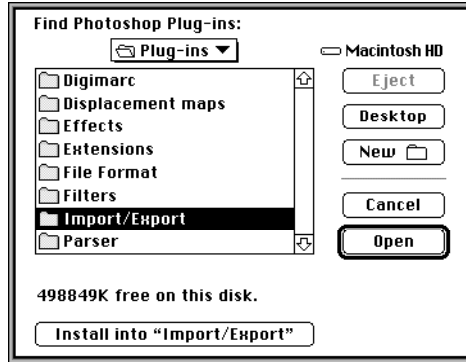
7. Double-click the Fiery XJ Scan Installer icon.

The installer window displays the Fiery XJ Scan plug-in and the amount of disk space required to install it.



8. Click Install.

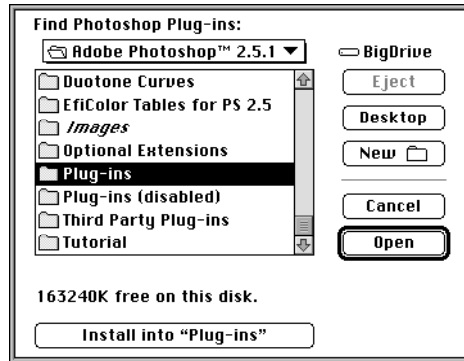
9. For Photoshop 4.0, browse to the Import/Export folder, located in the Plug-ins folder, and click Install into "Import/Export".



For Photoshop 3.0x, browse to the Acquire/Export folder, located in the Plug-ins folder, and click Install into "Acquire/Export".



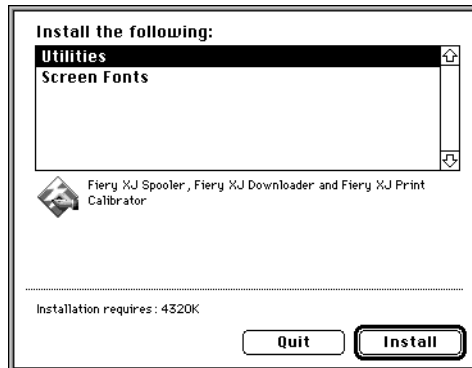
For Photoshop 2.5, browse to the Plug-ins folder, and click Install into "Plug-ins".



TO INSTALL MACINTOSH UTILITIES:

1. If you are using an external CD-ROM drive, connect it to your Macintosh.
2. Insert the User Software CD.
3. Double-click to open the Installers folder.
4. Double-click the Utilities Installer icon.

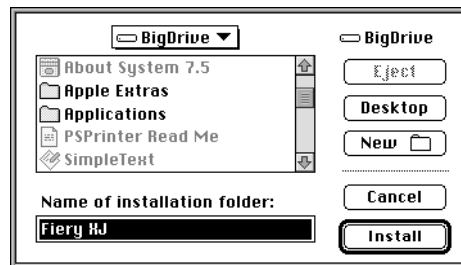
The installer window lists Utilities and Screen Fonts and displays the amount of disk space required to install them.



5. Shift-click to select both items.
6. Click **Install**.
7. Browse to where you want to install the utilities, and click **Install**.

You can install the utilities anywhere you like; you may want to keep them in the same folder with your other utility software.

The screen fonts are automatically installed in the Fonts folder in your System Folder, and are available for immediate use. If you have any applications open, you must quit and relaunch them before the newly installed screen fonts are available.



8. When the installation is complete, click **Quit**.

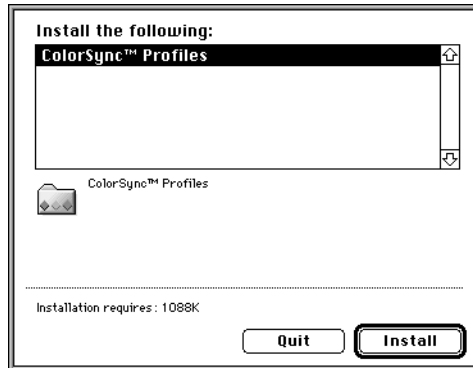
Install the ColorSync™ profiles only if your system uses them.

TO INSTALL MACINTOSH COLORSYNC™ PRINTER PROFILES:

1. If you are using an external CD-ROM drive, connect it to your Macintosh.
2. Insert the User Software CD.
3. Double-click to open the Color Files:Color Management: ColorSync™ Profiles Installer folder.

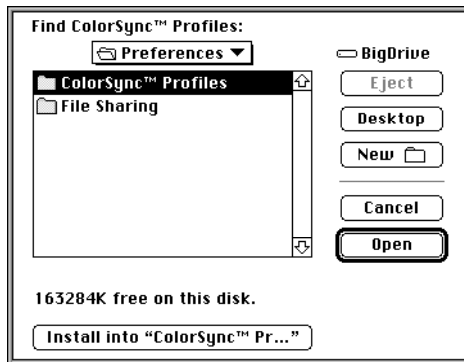
4. Double-click the ColorSync™ Profiles Installer icon.

The installer window displays ColorSync™ profiles and the amount of disk space required to install them.



5. Click Install.

6. If ColorSync is installed on your system, browse to the ColorSync™ Profiles folder, located in the Preferences folder, and click Install into "ColorSync™ Profiles".



Copying files from the Color Files folder

Copy any additional files from the Color Files folder on the User Software CD to your hard disk. Many of the files are PostScript files you can download and print using the Fiery XJ Downloader or any other application that supports printing PostScript files. You can put the Color Files folder anywhere you like.

In the Color Files folder are two folders:

Color Management, which contains the Calibration, ColorSync™ Profiles Installer, EFICOLOR 2.0, and Photoshop Separation Tables folders.

Calibration folder	Demo Measurement, a sample measurements file that you can use with Fiery XJ Print Calibrator. It is <i>for demonstration purposes only</i> and should not be used to calibrate your Fiery XJ.
Patches folder (in Calibration folder)	Custom.ps and Standard.ps, which are PostScript measurements files. Custom.ps is provided to enable you to download measurement patches that incorporate the printer's current calibration set, while Standard.ps is provided to enable you to download standard measurement patches that ignore the printer's current calibration set. These files are provided for expert users and should not be used for day-to-day calibration.
ColorSync™ Profiles Installer folder	ColorSync™ Profiles Installer, which when run installs ICC printer and monitor profiles specially designed for use with the Fiery XJ; and Calibrated RGB, a file for use with Photoshop and Fiery XJ Scan that allows you to set the proper source color space. For information on installing the ColorSync printer profiles, see page 7.

EFICOLOR 2.0 folder	Printer profiles specially designed for use with the Fiery XJ, your particular printer model, and the EFICOLOR color management system (see “Color management files” on page 10).
Photoshop Separation Tables folder	Files specially designed for use with the Fiery XJ, your particular printer model, and Adobe Photoshop (see “Color management files” on page 10).
Reference Pages, which contains Color Reference, Pantone Pages, and Sample Pages folders.	
Color Reference folder	CMYK Colors, a folder which contains a PostScript file of CMYK mixtures you can download and print using the Fiery XJ Downloader or any other application that supports printing PostScript files; and RGB Colors, a folder which contains files you can print from Microsoft Word 6.0 or later (RGB page 01) or PowerPoint 4.0 or later (RGB page 02) to view available RGB colors.
Pantone Pages folder	PostScript files of PANTONE coated and uncoated colors for use with the Fiery XJ and your particular printer model.
Sample Pages folder	Sample2.ps, a PostScript file of sample images that you can download and print.

Color management files

Color management files are required to ensure proper colors when printing with the Fiery XJ. They are specific to the Fiery XJ and your printer:

- ICC ColorSync Profiles, installed by the software installer.
Includes Fiery Xerox 5750 ICC, Fiery Xerox Majestik ICC, and Fiery Xerox Regal ICC, which are three printer profiles specially designed for use with the Fiery XJ, your particular printer model, and the Macintosh color management system; also includes EFIRGB ICC, a monitor profile specially designed for use with the Fiery XJ and the Macintosh color management system.

- EFICOLOR 2.0 profiles can be copied from the User Software CD.
- EFICOLOR Photoshop Separation Table files can be copied from the User Software CD and loaded from Adobe Photoshop.

Install the EFICOLOR files only if your system uses the EFICOLOR color management system.

TO INSTALL EFICOLOR FILES:

1. Open the EFICOLOR 2.0 folder.
2. Copy the file that matches your printer model to the System:Preferences: ColorSync™ Profiles folder on your hard disk.
3. If you want to use EFICOLOR with Photoshop, open the Photoshop Separation Tables folder.
4. Copy the two files (<printer model>.P and <printer model>.S) that correspond to your printer to the Adobe Photoshop folder.

Loading the monitor settings file for Adobe Photoshop

If you will be using Photoshop and Fiery XJ Scan, load the Calibrated RGB monitor settings file. It is necessary to load this file only once.

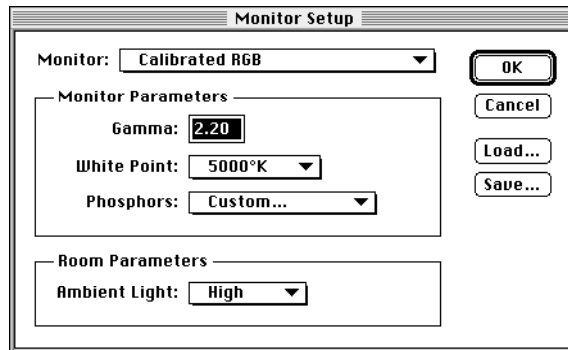
TO LOAD THE MONITOR SETTINGS FILE:

1. Launch the Photoshop application.
2. Choose Preferences from the File menu.
3. Choose Monitor Setup from the Preferences submenu.
The Monitor Setup dialog box appears. For information about this dialog box, see the Adobe Photoshop documentation.
4. In the Monitor Setup dialog box, click Load.

5. Browse to the ColorSync Profiles folder (in the Preferences folder), select the Calibrated RGB file, and click Open.

The Calibrated RGB file appears as the selection in the Monitor pop-up menu of the Monitor Setup dialog box.

6. Under Room Parameters, set Ambient Light to High, and click OK.



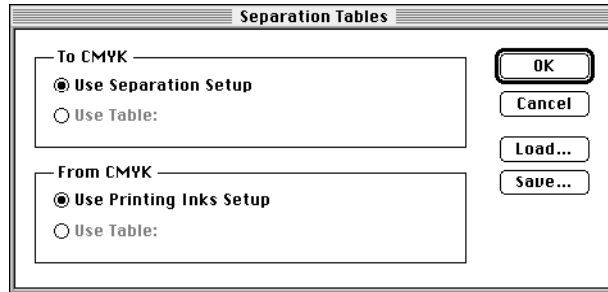
Loading the separation tables

If you will be using EFICOLOR with Photoshop, install the EFICOLOR separation tables that correspond to your printer.

TO LOAD THE SEPARATION TABLES:

1. Launch the Photoshop application.
2. Choose Preferences from the File menu.
3. Choose Separation Tables from the Preferences submenu.

4. Click Load.



5. Browse to the Adobe Photoshop folder, select the appropriate separation table file, and click Open.

Use the <printer model>.P file if you will be printing in Photographic mode.

Use the <printer model>.S file if you will be printing in Solid Color mode.

6. Verify that the file you selected appears next to "Use Table:" area, and click OK.

Separation tables remain loaded the next time you start Photoshop, unless you remove them.

Setting up the Fiery XJ as a PostScript printer

To set up the Fiery XJ as a PostScript printer, you must install the Adobe PostScript Printer Driver (version 8.x supports PostScript Level 2) and the PostScript Printer Description (PPD) file that corresponds to your printer. Both are provided on the User Software CD.

Printer drivers provide a way to communicate information on print jobs between your applications, the Fiery XJ, and any other PostScript printer connected to your computer.

TO INSTALL THE PRINTER DRIVER:

1. If you are using an external CD-ROM drive, connect it to your Macintosh.
2. Insert the User Software CD.

3. Double-click to open the Printer Driver folder.
4. Double-click the Installer icon.
5. Click OK in the Adobe welcome screen.
6. Click Install in the dialog box that appears.

This installs the Adobe PostScript Printer Driver, the PPD files that correspond to your printer, and Apple Chooser v7.3 (if you are using an earlier version).

7. Click OK in the dialog box informing you that installation is complete.

Setting up the Fiery XJ in the Chooser

After you install the printer driver and PPD files, you need to set up the Fiery XJ in the Chooser in order to take full advantage of its features. This section describes how to set up the Fiery XJ with the Adobe PostScript Printer Driver.

TO SET UP THE FIERY XJ IN THE CHOOSER:

1. Select Chooser from the Apple menu.
2. Click the PSPrinter icon.
Make sure AppleTalk is set to Active and Background Printing is set to Off.
3. Select the correct AppleTalk zone if necessary.
4. Select the Fiery XJ by name from the list of printers, and click Setup.
5. Select the Fiery XJ PPD that corresponds to your printer, and click Select.
For 5750 copiers, select Fiery XJ 5750 v2015.802.
For MajestiK copiers, select Fiery XJ MajestiK v2015.802.
For Regal copiers, select Fiery XJ Regal v2015.802.
6. If the Installable Options dialog box appears, select the appropriate settings in the pop-up menus, and click OK.
Select the settings that correspond to the special features on your printer.
7. Close the Chooser.

Installing user software on a PC-compatible computer

This chapter describes installing software and setting up printing from a PC-compatible computer running Windows 3.1x, Windows 95, or Windows NT.

The general steps for installing the Fiery XJ user software from the CD are:

- Install the plug-ins (Fiery XJ Export and Fiery XJ Scan) and the Fiery XJ utilities. The necessary network files are installed with the Utils Installer, *not* with the Export or Scan Installers. Be sure to run the Utils Installer in order to use all the Fiery XJ utilities and plug-ins.
- Move files to the appropriate locations as necessary.
- Edit configuration files as necessary.
- Copy additional color files from the User Software CD as needed.
- If you will be using Fiery XJ Scan, load the monitor settings file.
- If you will be using EFICOLOR™ with Photoshop, install the EFICOLOR separation tables for your Fiery XJ.
- Install the PostScript Printer Driver you want to use.
- Set up the printer driver to communicate with the Fiery XJ.

Installing Windows software

The User Software CD includes the following installers:

- Export (English\Instalrs\Export\Disk1 folder)
Installs the Fiery XJ Export plug-in version 3.1 for Photoshop.
- Scan (English\Instalrs\Scan\Disk1 folder)
Installs the Fiery XJ Scan plug-in version 3.1 for Photoshop.
- Utils (English\Instalrs\Utils\Disk1 folder)
Installs Fiery XJ Downloader, Fiery XJ Print Calibrator, and Fiery XJ Spooler.

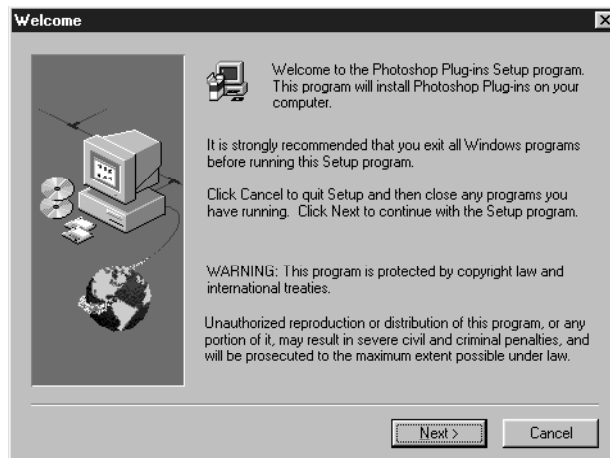
Before installing Fiery XJ Export, note the hard disk location and version of your Adobe Photoshop software.

TO INSTALL FIERY XJ EXPORT:

1. Insert the User Software CD into your computer.
2. For Windows 3.1x or NT File Manager, double-click the icon for the CD-ROM drive to display its contents.

For Windows 95, open the My Computer window and double-click the icon for the CD-ROM drive.

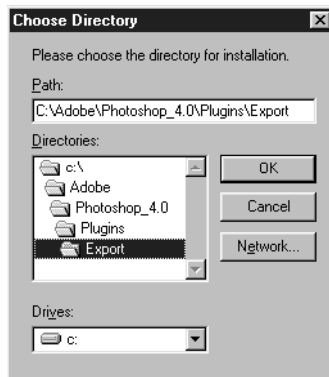
3. Double-click to open the following folders: English\Instalrs\Export\Disk1.
4. Double-click the Setup.exe icon.
5. Click Next in the Welcome dialog box.



6. Click Browse.



7. For Photoshop 4.0, browse to the Photoshop\Plugins\Export folder, and click OK.



For Photoshop 3.0x, browse to the Photoshop\Plugins folder, and click OK.



For Photoshop 2.5, browse to the Photoshop\Plugins folder, and click OK.

8. Click Next.

The Start Copying Files window appears.

9. Verify that the correct information appears in the Current Settings area, and click Next.

If the information is not correct, click Back and browse to the correct folder.



10. When installation is complete, click OK.

Before installing Fiery XJ Scan, note the hard disk location and version of your Adobe Photoshop software.

TO INSTALL FIERY XJ SCAN:

1. Insert the User Software CD into your computer.
2. For Windows 3.1x or NT File Manager, double-click the icon for the CD-ROM drive to display its contents.

For Windows 95, open the My Computer window and double-click the icon for the CD-ROM drive.

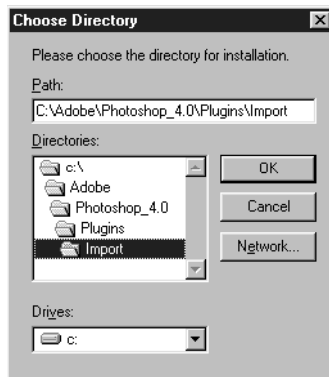
3. Double-click to open the following folders: English\Instalrs\Scan\Disk1.
4. Double-click the Setup.exe icon.
5. Click Next in the Welcome dialog box.



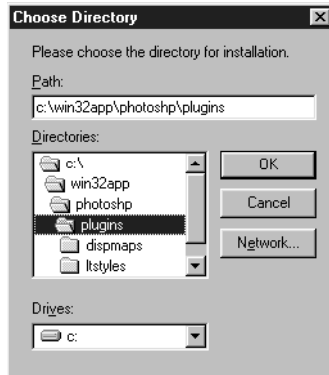
6. Click Browse.



7. For Photoshop 4.0, browse to the Photoshop\Plugins\Import folder, and click OK.



For Photoshop 3.0x, browse to the Photoshop\Plugins folder, and click OK.



For Photoshop 2.5, browse to the Photoshop\Plugins folder, and click OK.

8. Click Next.

The Start Copying Files window appears.

9. Verify that the correct information appears in the Current Settings area, and click Next.

If the information is not correct, click Back and browse to the correct folder.



10. When installation is complete, click OK.

TO INSTALL FIERY XJ UTILITIES:

1. Insert the User Software CD into your computer.
2. For Windows 3.1x or NT File Manager, double-click the icon for the CD-ROM drive to display its contents.

For Windows 95, open the My Computer window and double-click the icon for the CD-ROM drive.

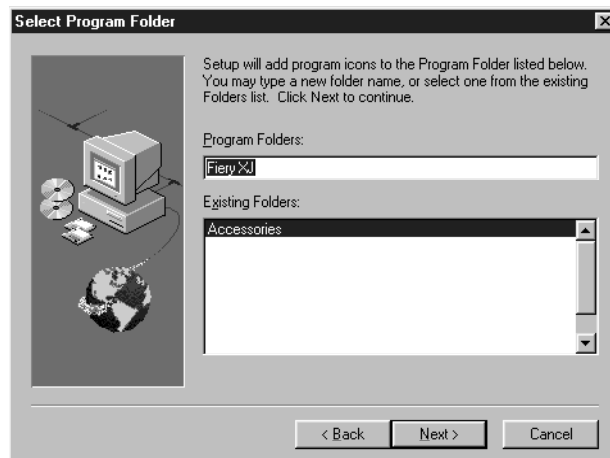
3. Double-click to open the following folders: English\Instalrs\Utils\Disk1.
4. Double-click the Setup.exe icon.
5. Click Next in the Welcome dialog box.



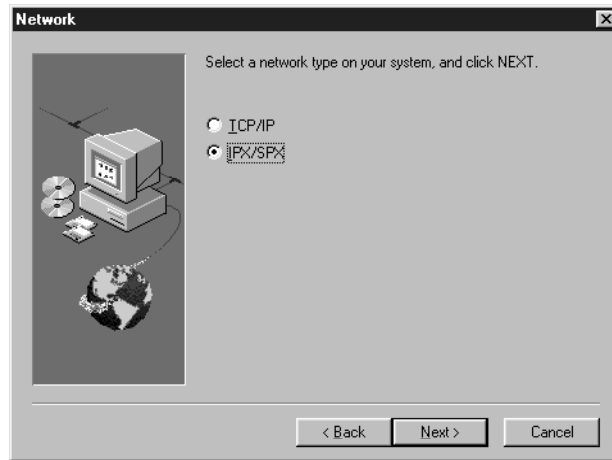
6. Click Next to install the utilities in the default folder, or click Browse and browse to the desired destination.



7. To install utility icons in the Program Folder, click Next for the default folder. You can also rename the folder or select an existing folder and click Next.



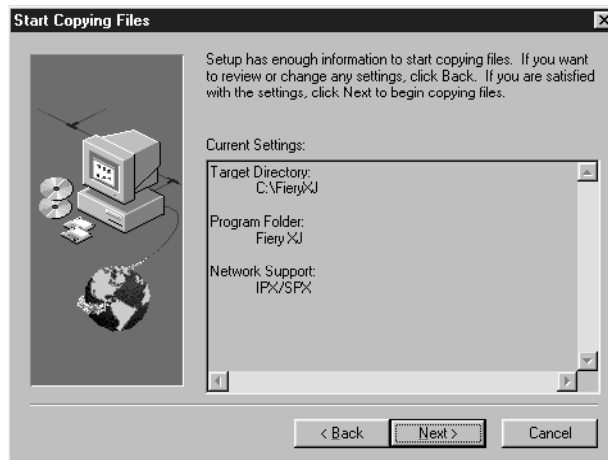
8. For Windows 95 and Windows NT only, specify the network type.
For Windows 95 choose IPX/SPX; for Windows NT choose TCP/IP.



NOTE: The network type you specify determines which .dll file is installed in the Windows\System folder—Net_wipx.dll for IPX/SPX, or Net_wsck.dll for TCP/IP. If you reinstall the utilities and specify a different network type, both .dll files will reside in the Windows\System folder. This could cause problems connecting to the Fiery XJ. Make sure to delete the .dll file corresponding to the network type that you are *not* using.

9. Verify that the correct information appears in the Current Settings area, and click Next.

If the information is not correct, click Back.



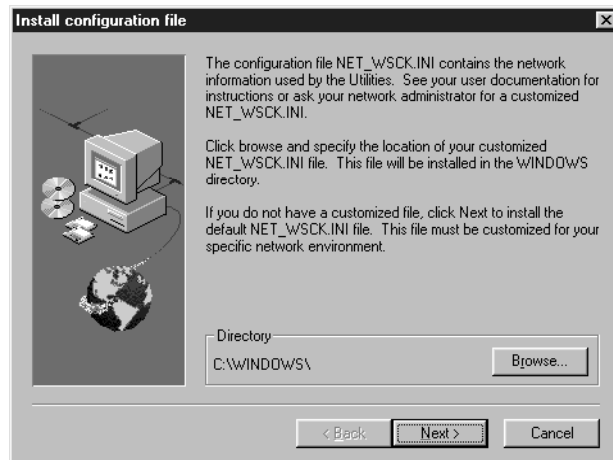
Information about installation progress appears on the screen as software is copied from the CD.

Click Cancel to cancel installation.

10. If you have a preconfigured NET_WSCK.INI file for your site, click Browse and browse to the file.

If you do not have a preconfigured NET_WSCK.INI file, click Next to install the default file.

You are prompted to configure the NET_WSCK.INI file when you first launch one of the Fiery XJ utilities (see “Configuring the NET_WSCK.INI file” on page 28).



11. When installation is complete, click OK.

Using the Fiery XJ utilities for the first time

In order to use the Fiery XJ utilities, certain files must be moved to specific locations and configured to connect to the Fiery XJ.

Windows 3.1x

Where to move and how to configure files depends on your network connection. You must do the following:

- Move the Fiery XJ utility files to the appropriate locations (if you have older files that will be rewritten, rename or back them up).
- Verify that you have the correct information in your NET.CFG file. This file was installed as part of your installation of IPX/SPX.

TO MOVE FILES TO THE APPROPRIATE LOCATIONS:

1. Open the folder containing the Fiery XJ utilities.
2. Open the IPXSPX folder and move files to the following locations:

From this folder:	Drag these files:	To this location (path):
IPXSPX\SYSTEM	All files	WINDOWS\SYSTEM folder
IPXSPX\WINDOWS	NET_WSCK.INI*	WINDOWS folder

*This is the default NET_WSCK.INI file. You or your system administrator must customize it for your site as described in “Configuring the NET_WSCK.INI file” on page 28.

TO VERIFY THE INFORMATION IN THE NET.CFG FILE FOR WINDOWS 3.1X AND IPX:

- In the Link Driver section of the file, make sure that the Ethernet Frame Type matches what is set on your Fiery XJ.

You can print the Configuration page from the Fiery XJ Control Panel to see the current setting.

Windows 95 and Windows NT

You may need to configure the NET_WSCK.INI file before the Fiery XJ utilities will connect to the Fiery XJ (see “Configuring the NET_WSCK.INI file” on page 28).

Configuring the NET_WSCK.INI file

If you installed the default NET_WSCK.INI file included with your Fiery XJ software, you must properly configure this file to be able to use the Fiery XJ utilities with the Fiery XJ.

If you are using Windows 3.1x, you must copy this file to the WINDOWS folder of every user. The installer will not automatically place it in the correct folder.

Before you begin

- If you are using IPX/SPX:

Print the Configuration page from the Control Panel and note the Ethernet IPX address for the Fiery XJ.

- If you are using TCP/IP:

Set up a Domain Name Server (DNS) for the IP address of the Fiery XJ in the printcap file.

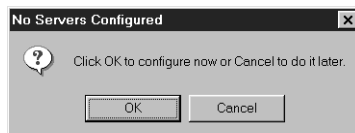
- If your network does not support DNS servers:

Edit the HOSTS file in your WINDOWS folder and insert an IP address for the Fiery XJ.

For more information, see your system documentation.


TO CONFIGURE THE NET_WSCK.INI FILE FOR IPX/SPX NETWORKS:

1. Launch one of the Fiery XJ utilities (Fiery XJ Downloader, Fiery XJ Spooler, or Fiery XJ Print Calibrator).
2. Click OK in the screen that appears.



3. Enter the server name, IPX Address, and new device name in the Add New Server dialog box.

You must enter this information *exactly*.



The screenshot shows a dialog box titled "Add New Server". It is divided into several sections. The "Server" section has two input fields: "Name" and "IPX Address". The "IPX Address" field is a multi-character input field with individual boxes for each character. Below this is the "New Device" section, which has a text input field and an "Add" button. The "Devices" section features a list box and a "Remove" button. At the bottom left, there is a checkbox labeled "Attended Printing". At the bottom center, there are "OK" and "Cancel" buttons.

See the Configuration page for information. The Server Name is listed under Server Setup; the IPX address is listed under Network Setup/Ethernet Setup.

In the New Device area:

For 5750 copiers, enter 5750

For Majestik copiers, enter 5760/65

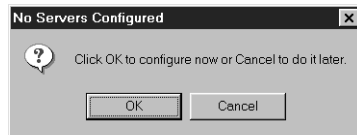
For Regal copiers, enter 5790

NOTE: The IPX address is a unique value associated with the Fiery XJ hardware and cannot be changed.

4. Click Add.
5. When 5750, 5760/65, or 5790 appears in the Devices area, click OK.
The Fiery XJ appears in a Chooser list of available servers.
6. Click OK to begin using the Fiery XJ utility.

TO CONFIGURE THE NET_WSCK.INI FILE FOR TCP/IP NETWORKS:

1. Launch one of the Fiery XJ utilities (Fiery XJ Downloader, Fiery XJ Spooler, or Fiery XJ Print Calibrator).
2. Click OK in the screen that appears.



3. Enter the server name (DNS name or IP Address) and new device name in the Add New Server dialog box.

You must enter this information *exactly*.



See the Configuration page for information. The IP Address (for server name) is listed under Network Setup/Ethernet Setup/Enable TCP/IP.

In the New Device area:

For 5750 copiers, enter 5750

For Majestik copiers, enter 5760/65

For Regal copiers, enter 5790

4. Click Add.

5. When 5750, 5760/65, or 5790 appears in the Devices area, click OK.
The Fiery XJ appears in a Chooser list of available servers.
6. Click OK to begin using the Fiery XJ utility.

Editing the NET_WSCK.INI file

You should edit the NET_WSCK.INI file whenever there is any information change to your Fiery XJ server or network that impacts the file, such as a Server Name or IP Address change. First change the specific Setup information on the Control Panel before editing the NET_WSCK.INI file.

TO EDIT THE NET_WSCK.INI FILE:

1. Launch one of the Fiery XJ utilities (Fiery XJ Downloader, Fiery XJ Spooler, or Fiery XJ Print Calibrator).
The Fiery XJ appears in a Chooser list of available servers.
2. Click Configure.
3. Click Modify in the Configure screen.
4. Enter the new information in the Modify Server Settings dialog box, and click OK.
The new information for the Fiery XJ appears in the Configure screen.
5. Click Close.
The Fiery XJ appears in a Chooser list of available servers.
6. Click OK to begin using the Fiery XJ utility.

Copying files from the Clrfiles folder

Copy the additional files that you want from the Clrfiles folder on the User Software CD to your hard disk. Many of the files are PostScript files that you can download and print using the Fiery XJ Downloader or any other application that supports printing PostScript files. You can put the Clrfiles folder anywhere you like.

In the Clrfiles folder are two folders:

Clr_mgmt, which contains Calib, Icm_prof, and Tables folders.

Calib folder	Demo.meas, a sample measurements file that you can use with Fiery XJ Print Calibrator. It is <i>for demonstration purposes only</i> and should not be used to calibrate your Fiery XJ.
Patches folder (in Calib folder)	Custom.ps and Standard.ps, which are PostScript measurements files. Custom.ps is provided to enable you to download measurement patches that incorporate the printer's current calibration set, while Standard.ps is provided to enable you to download standard measurement patches that ignore the printer's current calibration set. These files are provided for expert users and should not be used for day-to-day calibration.
Icm_prof folder	ICC ICM printer profiles specially designed for use with the Fiery XJ, your particular printer model, and the Windows color management system (see "Color management files" on page 33).
Tables folder	Calrgb.ams and separation tables, which are files specifically designed for use with the Fiery XJ, your particular printer model, and Adobe Photoshop (see "Color management files" on page 33).

Referenc, which contains Colorref, Pantone, and Samples folders.

Colorref folder	Cmyk_col, a folder which contains a PostScript file of CMYK mixtures you can download and print using the Fiery XJ Downloader or any other application that supports printing PostScript files; and Rgb_col, a folder which contains files you can print from Microsoft Word 6.0 or later (Rgb01.doc) or PowerPoint 4.0 or later (Rgb02.ppt) to view available RGB colors.
Pantone folder	PostScript files of PANTONE coated and uncoated colors for use with the Fiery XJ and your particular printer model.
Samples folder	Sample2.ps, a PostScript file of sample images you can download and print.

Color management files

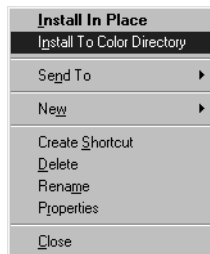
Color management files are required to ensure proper colors when printing with the Fiery XJ. These files are specific to the Fiery XJ and the printer:

- ICC ICM profiles can be installed from the User Software CD to the Windows\System\Color folder on your hard disk.
- EFICOLOR Calrgb.ams and separation table files can be copied from the User Software CD and loaded from Adobe Photoshop.

MICROSOFT OFFICE 97 USERS: If you will be printing from the Microsoft Office 97 suite of applications, *do not* install the ICC ICM profiles.

TO INSTALL THE ICC ICM PROFILES:

1. Open the Icm_prof folder.
2. Right-click to select the ICC ICM profile that corresponds to your printer, and choose Install To Color Directory from the menu that appears.



If the Fiery XJ is connected to a MajestiK copier, select “Efxjx203.icm”.

If the Fiery XJ is connected to a Regal copier, select “Efxjx303.icm”.

If the Fiery XJ is connected to a 5750 copier, select “Efxjx503.icm”.

Install the EFICOLOR files only if your system uses the EFICOLOR color management system.

TO INSTALL THE EFICOLOR FILES:

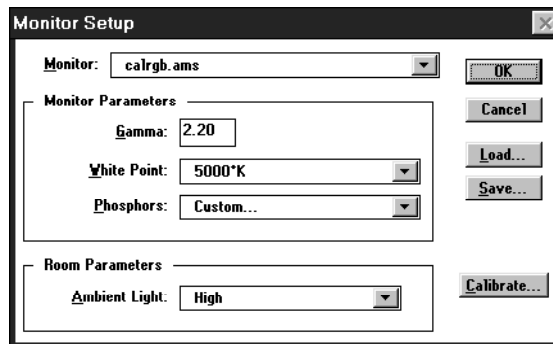
1. If you want to use EFICOLOR with Photoshop, open the Tables folder.
2. Copy the two files (<printer model>p.ast and <printer model>s.ast) that correspond to your printer to the Adobe Photoshop folder.
3. Copy the Calrgb.ams file to the Adobe Photoshop folder.
You may have installed this file previously; if so, you do not need to replace it.

Loading the monitor settings file for Adobe Photoshop

If you will be using Photoshop and Fiery XJ Scan, load the monitor settings file. You need to load this file only once.

TO LOAD THE MONITOR SETTINGS FILE:

1. Launch the Photoshop application.
2. Choose Preferences from the File menu.
3. Choose Monitor Setup from the Preferences submenu.
The Monitor Setup dialog box appears. For information about this dialog box, see your Adobe Photoshop documentation.
4. In the Monitor Setup dialog box, click Load.
5. Browse to the Adobe Photoshop folder, select the Calrgb.ams file, and click OK.
The Calrgb.ams file appears as the selection in the Monitor pop-up menu of the Monitor Setup dialog box.
6. Under Room Parameters, set Ambient Light to High and click OK.

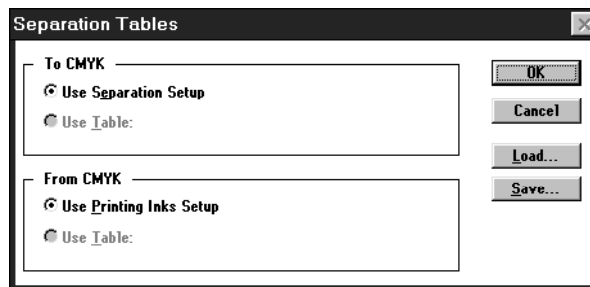


Loading the separation tables

If you will be using Photoshop, install the EFICOLOR separation tables that correspond to your print device.

TO LOAD THE SEPARATION TABLES:

1. Launch the Photoshop application.
2. Choose Preferences from the File menu.
3. Choose Separation Tables from the Preferences submenu.
4. Click Load.



5. Browse to the Adobe Photoshop folder, select the appropriate separation table file, and click Open.
Use the <printer model>p.ast file if you will be printing in Photographic mode.
Use the <printer model>s.ast file if you will be printing in Solid Color mode.
6. Verify that the file you selected appears next to "Use Table:" area, and click OK.
Separation tables remain loaded the next time you start Photoshop, unless you remove them.

Setting up the Fiery XJ as a PostScript printer

To set up the Fiery XJ as a PostScript printer, you must install a PostScript Printer Driver and the PostScript Printer Description (PPD) file that corresponds to your printer.

- For Windows 3.1x or Windows 95, install the appropriate Adobe PostScript Printer Driver included on the User Software CD (supports PostScript Level 2).
- For Windows NT, use the standard Windows printer driver that came with your Windows system software.

Setting up printing with Windows 3.1x

The Adobe PostScript Printer Driver v3.0.1 for Windows 3.1x is included on the Fiery XJ User Software CD.

TO INSTALL THE ADOBE POSTSCRIPT PRINTER DRIVER WITH WINDOWS 3.1x:

1. Start Windows and exit any applications that start automatically.
2. Insert the User Software CD into your computer.
3. In the Windows Program manager, choose Run from the File menu.
4. Click Browse.
5. Select the drive containing your User Software CD.
6. Open the English\Prntdrv\Win_31 folders.
7. Select the Setup.exe file.
8. Click OK in the Browse and Run dialog boxes.
9. Click Next to postpone reading the README file.
10. Click Continue to continue the installation procedure and follow the on-screen instructions.
11. Once the printer driver has been installed, click Restart to restart Windows.

**TO SET UP THE WORKSTATION FOR PRINTING WITH THE
ADOBE POSTSCRIPT PRINTER DRIVER FOR WINDOWS 3.1x:**

1. Double-click the Adobe PostScript Printers icon in the Windows Program Manager Control Panel.

The Adobe PostScript Printers dialog box appears.

2. Select the Fiery XJ PPD that corresponds to your printer.

For 5750 copiers, select Fiery XJ 5750 v2015.802.

For MajestiK copiers, select Fiery XJ MajestiK v2015.802.

For Regal copiers, select Fiery XJ Regal v2015.802.

3. Click Install.
4. Click OK when you are notified that the printer was successfully installed.
5. Click Close when installation is complete.

The name of the printer you installed will appear in the Printer Descriptions Available list after you restart your computer.

Setting the default printer with Windows 3.1x

You can specify the Fiery XJ as the default printer. Many Windows applications use the default printer when you choose the Print command.

TO SET THE DEFAULT PRINTER:

1. In the Control Panel window, double-click the Printers icon.

The Printers window appears.

2. In the Printers window, select your Fiery XJ in the Installed Printers list box.
3. Click Set As Default Printer.

The Fiery XJ appears in the Default Printer area of the Printers window.

Selecting a printer port with Windows 3.1x

When you install a printer, Windows assigns it to a default printer port. If the Fiery XJ is connected to your computer through a network or you want to assign it to a different port, you need to change the port assignment. For information on which port to use, see your system administrator.

TO SELECT A PRINTER PORT:

1. In the Control Panel window, double-click the Printers icon.
2. In the Printers window, select the Fiery XJ in the Installed Printers list box.
3. Click Connect.

The Connect window appears.

4. Connect the Fiery XJ to the same port as your network.

For parallel printing, select the port (LPT1, LPT2, or LPT3) connected to your parallel cable.

To print to a file, select FILE.

Printing to a file is useful if the Fiery XJ is not at your site. However, if you select the FILE port, you cannot print to a printer until you select a network or printer port. (In some applications, you can select the FILE port from the Print dialog box; this is preferable for temporary use since it doesn't require resetting the port in the Control Panel.)

5. Click OK.

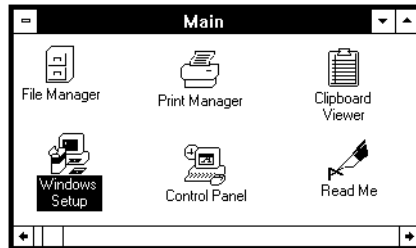
The Printers window appears, with the selected port next to the highlighted printer name in the Installed Printers list box.

6. When you are finished, click OK and then click Close.

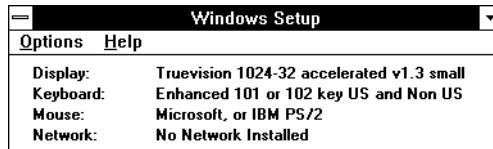
Setting up IPX (Novell) printing with Windows 3.1x

TO SET UP IPX (NOVELL) PRINTING FOR WINDOWS:

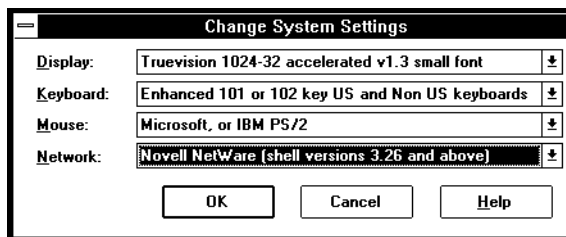
1. In the Main group of the Windows Program Manager, double-click the Windows Setup icon.



2. Choose Change System Settings from the Options menu.



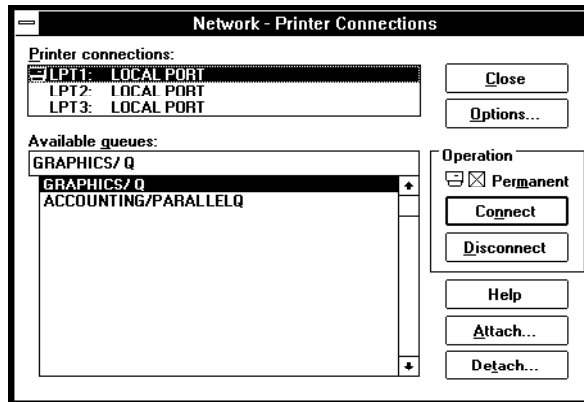
3. Choose Novell NetWare (shell version 3.26 and above) from the Network pop-up menu.



4. Click OK. When prompted, restart Windows.
5. In the Main group, double-click Control Panel, and then double-click Printers.
6. In the Printers Control Panel window, click Connect to connect the Fiery XJ to the appropriate port.

7. Select Network.

If you are printing to a file, select FILE. Printing to a file is useful if the printer is not at your site. However, if you select the FILE port, you cannot print to a printer until you select a network or printer port. If you select Network, the next window depends on the NetWare client driver version.



8. If the Network Printer Connections dialog box is displayed, select the port in the Printer connections box.
9. In the Available queues list box, select the server and queue name that correspond to the Fiery XJ.
10. Click the Connect button, and then click the Close button.
The Connect dialog box is displayed with the network path to the Fiery XJ.
11. Click OK in the Connect dialog box.
12. Click Close in the Printers dialog box.
13. Click OK.
The Printers window appears again, with the selected port next to the highlighted printer name in the Installed Printers list box.

You are ready to print to the Fiery XJ from Windows applications. When you select Print, jobs are routed to the print queue on the NetWare file server, and then transmitted to the Fiery XJ. The network administrator should verify the network connection by printing a test document from each networked computer that will use the Fiery XJ.

Setting up printing with Windows 95

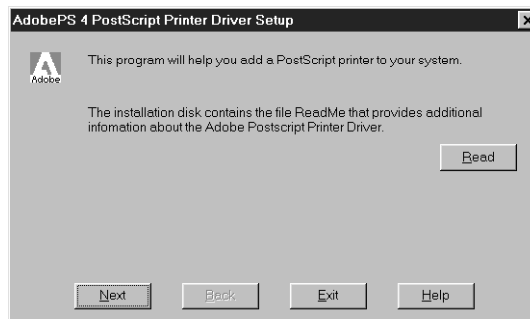
You can print to the Fiery XJ from your Windows 95 workstation over the parallel port connection and over an IPX (Novell) network. In both cases you need to install the Adobe PostScript printer driver for Windows, install the PostScript Printer Description (PPD) file on your computer, and set up the printer to accept your print jobs. The Adobe PostScript Printer Driver v4.1.1 for Windows 95 is included on the Fiery XJ User Software CD.

NOTE: If you have problems setting up the Fiery XJ, install another PostScript printer (such as the Apple LaserWriter) with the printer driver, and then install the Fiery XJ.

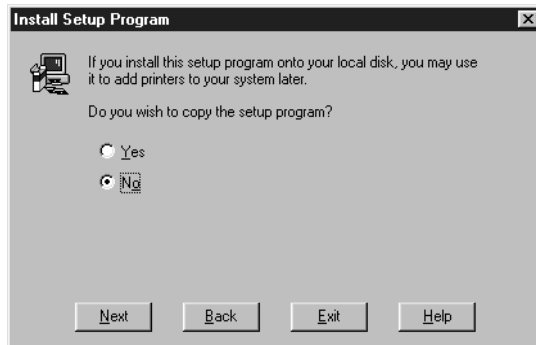
TO INSTALL THE FIERY XJ WITH THE ADOBE POSTSCRIPT PRINTER DRIVER FOR WINDOWS 95:

1. Insert the User Software CD into your computer.
2. In Windows 95 Explorer, select the User Software CD.
3. Open the English\Prntdrv\Win_95_41 folders.
4. Double-click the Setup.exe icon.

The Adobe Setup window appears.

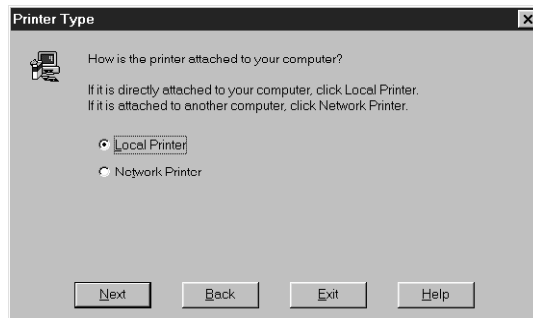


5. Click Next to postpone reading the README file.
6. If the Install Setup Program window appears, select No and click Next.



7. Select Local Printer and click Next.

This is a general installation. You can modify the port connection later, according to your network type.



8. Browse to the English\Prntdrv\W95_41 folder, and select the Fiery XJ PPD that corresponds to your printer; click Next.

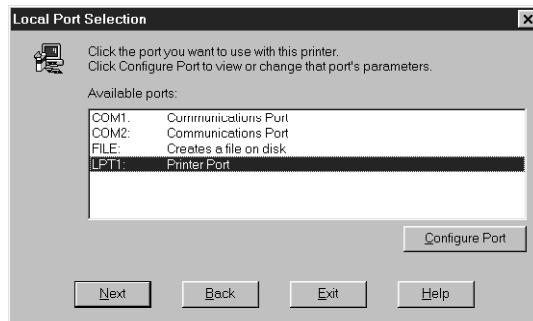
For 5750 copiers, select Fiery XJ 5750 v2015.802.

For MajestiK copiers, select Fiery XJ MajestiK v2015.802.

For Regal copiers, select Fiery XJ Regal v2015.802.

9. Select a port type (the default is LPT1:), and click Next.

You'll configure the port later, according to your network type.



10. Enter a descriptive name (up to 20 characters) for the printer. Select Yes to use the printer as the default printer, select No to test page and then click Next.

To use the default (PPD) name, do not change the entry in the Printer Name area.

The Windows 95 test page can be printed later, when the configuration is finished.

11. After Windows 95 copies the necessary files from the installation disk to the hard disk, configure the various Fiery XJ Properties by clicking on the tabs and selecting the options you prefer. When you have finished, click Apply and then click OK.

12. When installation is complete, click Exit.

An icon for the newly installed printer appears in the Printers window, with the name you gave it. Double-clicking the printer icon displays the Queue window for this printer.

13. Complete the network connection according to your network type.

- To configure the parallel connection, see “Completing the Windows 95 parallel port connection” on page 45.
- To configure the IPX connection, see “Completing the Windows 95 IPX/SPX or IPX (Novell) connection” on page 46.

Completing the Windows 95 connection

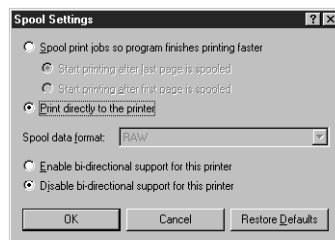
To print from Windows 95 you need to:

- Set up network servers, if any.
- Set up the Fiery XJ to accept print jobs from your computer.
- Configure a port on each Windows 95 computer for the network or connection type.

Completing the Windows 95 parallel port connection

TO SET UP PARALLEL PORT PRINTING FOR WINDOWS 95:

1. Click the Start button, choose Settings, and then choose Printers.
2. Click the Fiery XJ icon and choose Properties from the File menu (or right-click the icon and left-click Properties).
3. Click the Details tab.
LPT 1: (Printer Port) should appear in the “Print to the following port:” pop-up menu.
4. Click Spool Settings.
5. Select “Print directly to the printer” and “Disable bi-directional support for this printer”, and click OK.



You are now ready to print from your applications to the Fiery XJ with the parallel port. To confirm the connection, you can print a Windows 95 test page.

6. Click the General tab, and click Print Test Page.
7. Click OK in the window that appears.

When you select Print from an application, your PostScript files are transmitted over the parallel port connection to the Print queue, using the printer driver and the Fiery XJ printer description file.

Completing the Windows 95 IPX/SPX or IPX (Novell) connection

If you are printing through a Novell server, the Novell network and file server should be set up before you begin. The file server should be configured with a print server and print queue for the Fiery XJ. For details see your NetWare documentation and the *Administrator Guide*.

TO SET UP IPX/SPX PRINTING:

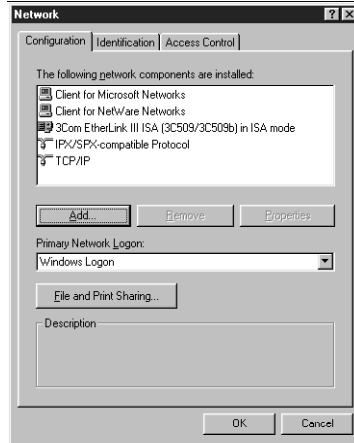
1. Open the Windows 95 Control Panel.
2. Double-click the Network icon.

Make sure that IPX/SPX-compatible Protocol and TCP/IP protocol are both listed in the Installed Network Components section.

For instructions, see your Windows 95 documentation.

NOTE: You must enable TCP/IP printing to ensure that all files required for IPX/SPX will be installed. You can select it and click Remove after you set up IPX/SPX if you do not need to use the TCP/IP protocol.

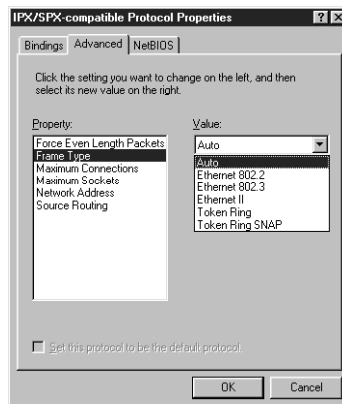
3. Double-click the IPX/SPX-compatible Protocol icon.



4. Click the Advanced tab.
5. In the Property list, click Frame Type. In the Value pop-up menu, select the Frame Type that corresponds to the one set during Fiery XJ Setup on the Control Panel.

If necessary, print the Configuration page from the Control Panel to check the Frame Type.

NOTE: Do not select Auto. Doing so may not select the Frame Type specified on the Fiery XJ.



6. Click OK and close the Network Control Panel.

TO SET UP IPX (NOVELL) PRINTING WITH WINDOWS 95:

1. Click the Start button, choose Settings, and then choose Printers.
2. Click the Fiery XJ icon, and choose Properties from the File menu (or right-click the icon and left-click Properties).
3. Click the Details tab, and click Add Port.
A list of connection options is displayed.
4. In the Add Port dialog box, specify the network path, or click Browse for a display of your network environment.
5. If you are using a NetWare file server, double-click the icon of the server you want to use for printing to the Fiery XJ and click OK.
6. Click the printer icon labeled with the NetWare print queue you will use and click OK.
7. In the Add Port dialog box, verify that the network path is updated, and click OK.
You are ready to print from the workstation.
Your print jobs are transmitted to the specified print queue on the Novell file server. The Fiery XJ polls the file server, and if jobs are present, they are transmitted to the Fiery XJ.
To confirm the connection, you can print a Windows 95 test page.
8. Click the General tab in the Properties dialog box, and click Print Test Page.
9. Click OK in the window that appears.

Setting up printing from Windows NT

All the setups described here begin with installation of the Windows NT PostScript printer driver and the printer PPD, and finish by configuring a particular type of connection between the workstation and the Fiery XJ. With this version of software, Fiery XJ printer files support Intel-based Windows NT v3.51 and v4.0.

All the setups use the PostScript printer driver provided with the Windows NT operating system. Accordingly, if the Fiery XJ is the first PostScript printer to be used with your system, you will need to have the Windows NT installation CD or disk set at hand.

For this connection to the Fiery XJ:	Use the driver installation on pages:	Complete the connection on pages:
Windows NT 4.0 Parallel Port TCP/IP with LPR	49 to 56	56 56 to 59
Windows NT 3.51 Parallel Port TCP/IP with LPR	59 to 62	62 62 to 63

NOTE: If you have problems installing the Fiery XJ with Windows NT, try installing another PostScript printer (such as the Apple LaserWriter IIg), and then install the Fiery XJ. Installing another printer ensures that all files are properly installed and available. For instructions, see your Windows NT documentation.

Installing the Fiery XJ as a Windows NT 4.0 PostScript printer

With Windows NT 4.0 you can install the Fiery XJ directly from the User Software CD.

There is more than one possible sequence of steps in installing the same printer. To avoid presenting an excessively branching procedure, we suggest that you install the Fiery XJ as a local parallel port printer first, and add the network port connection after the driver installation. If you prefer, you can install the network port first and the driver later.

Adding a printer to a local system requires that you log in to your local Windows NT workstation (not the network server domain) and that you are a member of the Administrators group for your workstation.

If your Windows NT computer is a client on a network, and you want to print to a shared printer, find out the name of the server on which the printer is defined.

TO INSTALL THE FIERY XJ PPD AS A LOCAL PRINTER WITH THE WINDOWS NT 4.0 POSTSCRIPT DRIVER:

1. Insert the User Software CD into your computer.
2. Click Start in the Windows NT taskbar, choose Settings, and then choose Printers.
3. Double-click Add Printer.

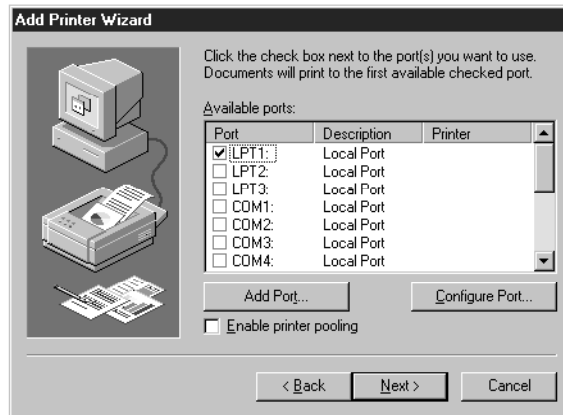
The Add Printer Wizard dialog box is displayed.



“My Computer” is available if you logged in to a computer on which you have Administrator privileges. If it is not available, you can add a network printer. The procedure is similar to adding a port (see page 58).

- To install a printer locally, select My Computer, and click Next.

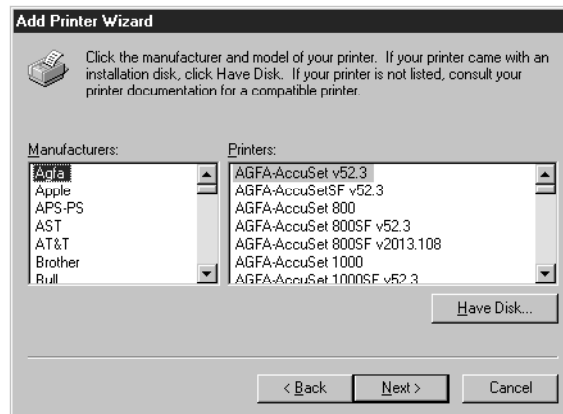
The available system ports are displayed.



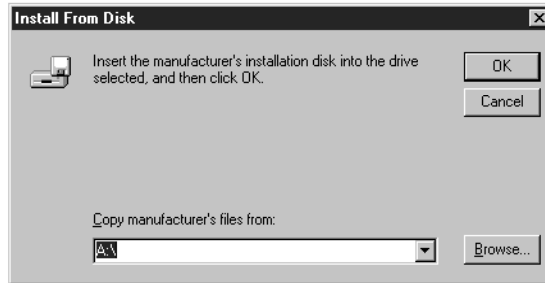
- Check LPT1: and click Next.

This is a general installation that works for the parallel port connection. You can add a network port later, according to your network type.

- In the dialog box displaying lists of manufacturers and printers, click Have Disk.



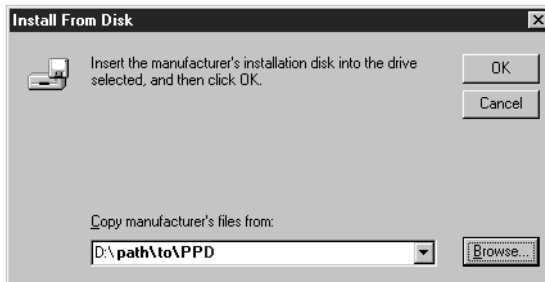
The Install from Disk dialog box prompts you for the disk.



7. Type the name of the CD-ROM drive (for example, D:\) and click Browse. In the Locate File dialog box, browse to the English\Prntdrv\Win_nt4x folder and click Open.

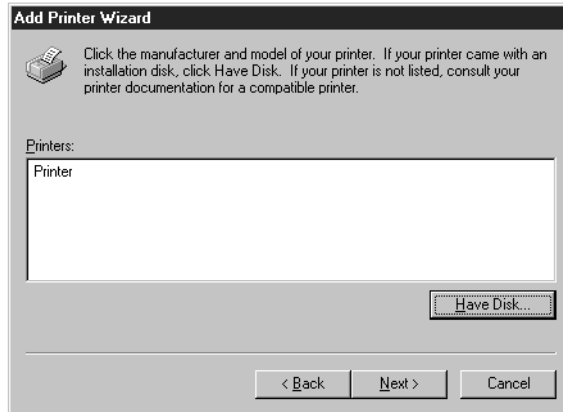
Make sure Ntprint.inf is selected and appears in the File name field.

The path is copied to the Install From Disk dialog box.



8. Click OK to install the Fiery XJ PPDs from the path you chose.

9. The Fiery XJ PPDs are displayed in the Printers list. Select the PPD file that corresponds to your printer and click Next.



For 5750 copiers, select Fiery XJ 5750 v2015.802.

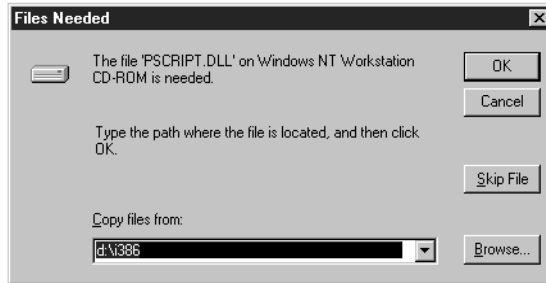
For MajestiK copiers, select Fiery XJ MajestiK v2015.802.

For Regal copiers, select Fiery XJ Regal v2015.802.

10. If you have already installed a PostScript printer, click Next.
11. Enter a name for the Fiery XJ, or leave the default name, and choose whether you want the Fiery XJ to be your default printer. Click Next.
12. Indicate whether you want the printer installed as a shared printer. Click Next.
13. Click No in the next dialog box to postpone printing a test page, and click Finish.

**TO COMPLETE INSTALLATION OF THE WINDOWS NT 4.0 POSTSCRIPT
PRINTER DRIVER:**

If the Files Needed dialog box appears, it prompts you to locate the Windows NT PostScript driver PSCRIPT.DLL.



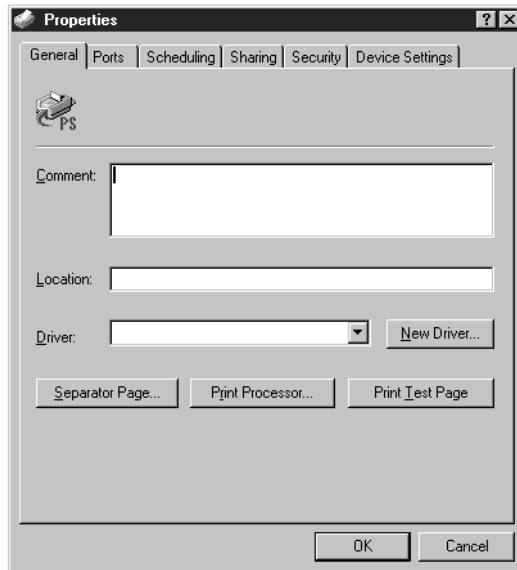
1. If this is the first PostScript printer on your system:
 - Eject the User Software CD and insert the Windows NT Installation CD.
 - In the text field, type the name of the CD-ROM drive (for example, D:\), and click Browse.
 - Browse to i386 (the folder containing the PostScript driver).

If you have already installed a PostScript printer on your system:

- In the text field, type the name of the hard drive (for example, C:\), and click Browse.
 - Browse to winnt\system32\spool\drivers\w32x86 (the folder containing the PostScript driver).
2. Click OK, then click OK in the Files Needed dialog box.

When installation is complete, the Printers window appears with an icon for the newly installed printer.

3. Right-click to select the Fiery XJ, and left-click Properties.



4. Complete the printer connection, according to your network type.
 - To configure the parallel connection, see “Completing the Windows NT 4.0 parallel port connection” on page 56.
 - To configure the TCP/IP (Lpr port) connection, see “Completing the Windows NT 4.0 TCP/IP connection” on page 56.

Completing the Windows NT 4.0/Fiery XJ connection

To print from Windows NT 4.0 you need to:

- Set up network servers, if any.
- Set up the Fiery XJ to accept print jobs from your computer.
- Configure a port on each Windows NT computer for the network or connection type.

Completing the Windows NT 4.0 parallel port connection

The parallel port cable connects the Fiery XJ to a single computer.

Once you have installed the Windows NT PostScript printer driver and the Fiery XJ PPD, complete the setup for parallel port printing as follows:

TO SET UP PARALLEL PRINTING FOR WINDOWS NT4.0:

1. Click the Start button, choose Settings, and then choose Printers.
2. Double-click the Fiery XJ icon, and choose Properties from the Printer menu.
In the Ports property sheet, confirm that LPT1 (Local Port) is checked.
The Fiery XJ is ready to accept parallel print jobs from your computer, using the Windows NT PostScript printer driver and the Fiery XJ PPD.
3. Select the General property sheet, and click Print Test Page.
When you select Print, your PostScript files are transmitted over the parallel port connection to the Fiery XJ.
4. Select the Sharing property sheet if you want to share the printer with network users. Select Shared, and select a share name.
Select the operating system or systems used by your network clients if you want to install a printer driver that those clients can download.
5. Click OK to exit the Printer Properties dialog box.

Completing the Windows NT 4.0 TCP/IP connection

Once you have installed the Windows NT 4.0 PostScript driver and the Fiery XJ PPD, complete the setup for the TCP/IP and lpr connection as follows:

- Prepare the Fiery XJ to accept print jobs using TCP/IP and lpr protocols.
- Configure the workstation for the TCP/IP connection.

Before you continue, ask the system administrator for the IP address assigned to the Fiery XJ, as well as the subnet mask and the gateway address, if they are used.

TO PREPARE THE FIERY XJ FOR TCP/IP AND LPR PRINTING:

1. With the Fiery XJ turned off, connect it to the network.
2. Turn on the Fiery XJ and from the Control Panel, select PRINTER SETUP. Confirm that one of the queues is enabled.
3. Select NETWORK SETUP. Enable TCP/IP and enter the appropriate settings for IP address, subnet mask and gateway address.

For details, see the *Administrator Guide*.

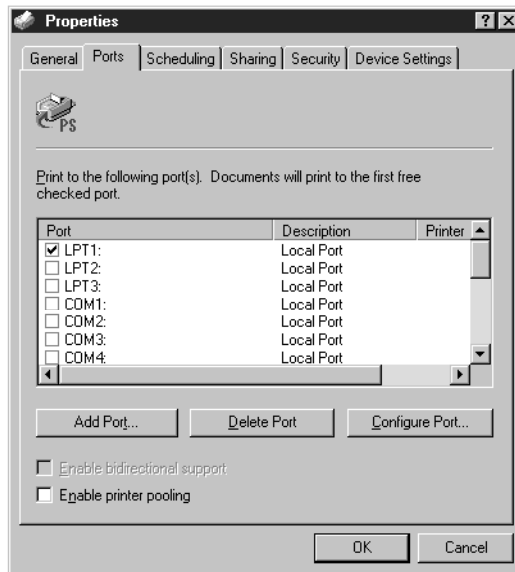
4. Exit NETWORK SETUP and save changes.

The Fiery XJ reboots.

The TCP/IP Protocol and Microsoft TCP/IP Printing software should already be installed on the Windows NT workstation.

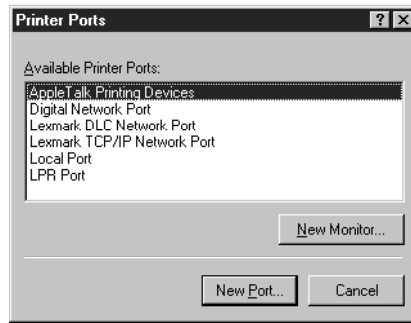
TO SET UP TCP/IP AND LPR PRINTING FOR WINDOWS NT 4.0:

1. Open the Printer Properties dialog box for the Fiery XJ. Click Ports to display the Ports property sheet.



2. Click **Add Port**.

The available port types are displayed.

3. Select **LPR Port** and click **New Port**.

4. In the “Add LPR compatible printer” dialog box, enter the IP address of the Fiery XJ.

If your network uses Domain Name Services (DNS), enter the DNS name assigned to the Fiery XJ instead of the IP address.

5. Press **Tab** and type the internal name of the Fiery XJ in lowercase letters.

The name must be one of these:

For 5750 copiers: print_5750, hold_5750.

For MajestiK copiers: print_5760/65, hold_5760/65.

For Regal copiers: print_5790, hold_5790.

For multiple devices, append the device number. For example: print_5760/65_1, print_5790_2.

NOTE: Type this name exactly as shown; it is required for communication with the Fiery XJ.

6. Click **OK**.

The workstation checks the address or DNS name that you entered and notifies you if it cannot resolve the address.

7. Close the **Printer Ports** dialog box.

The Ports property sheet shows the new port configuration.

8. Click OK to close the Ports property sheet.

The new port has been configured. You should now print a test page to verify the connection.

9. Open the Printer Properties dialog box for the Fiery XJ. Click General to display the General property sheet and click Print Test Page.

When you print, your PostScript files are transmitted over the LPR Port connection to the Fiery XJ.

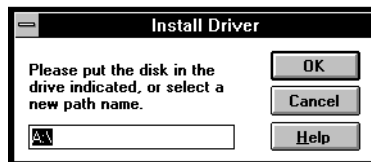
10. Click OK to exit the Printer Properties dialog box.

Installing the Fiery XJ as a Windows NT 3.51 PostScript printer

With Windows NT 3.51 you can install the Fiery XJ directly from the User Software CD.

TO INSTALL THE FIERY XJ PPD WITH THE WINDOWS NT 3.51 POSTSCRIPT DRIVER:

1. In the Windows NT Main group, double-click the Print Manager icon.
2. In the Print Manager window, choose Create Printer from the Printer menu.
The Driver box displays the first entry in the list of drivers.
3. In the Printer Name box of the Create Printer dialog box, type a name for the Fiery XJ.
4. In the Driver box, scroll down the list of drivers and select Other.
The Install Driver dialog box is displayed, prompting you to insert a disk.



5. Insert the User Software CD into your computer.
6. Type the name of the CD-ROM drive (for example, D:\), then type English\Prntdrv\Win_nt3x and click OK.

The Select Driver dialog box displays the printer description file on the CD.

7. Select the Fiery XJ PPD that corresponds to your printer and click OK.

For 5750 copiers, select Fiery XJ 5750 v2015.802.

For MajestiK copiers, select Fiery XJ MajestiK v2015.802.

For Regal copiers, select Fiery XJ Regal v2015.802.

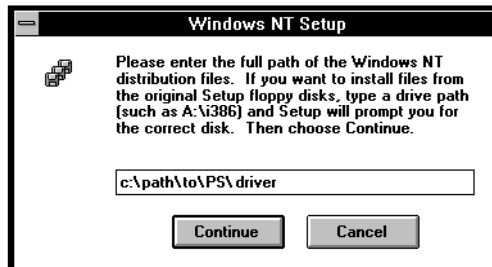
8. In the Windows NT Setup dialog box, enter the path to your PostScript driver, and then click Continue.

If this is the first PostScript printer on your system:

- Eject the User Software CD and insert the Windows NT Installation CD.
- In the text field, type the name of the CD-ROM drive (for example, D:\), then type i386 (the folder containing the PostScript driver).

If you have already installed a PostScript printer on your system:

- In the text field, type the name of the hard drive (for example, C:\), then type winnt35\system32\spool\drivers\w32x86 (the folder containing the PostScript driver).



The Create Printer dialog box appears, with the Fiery XJ displayed in the Driver box.

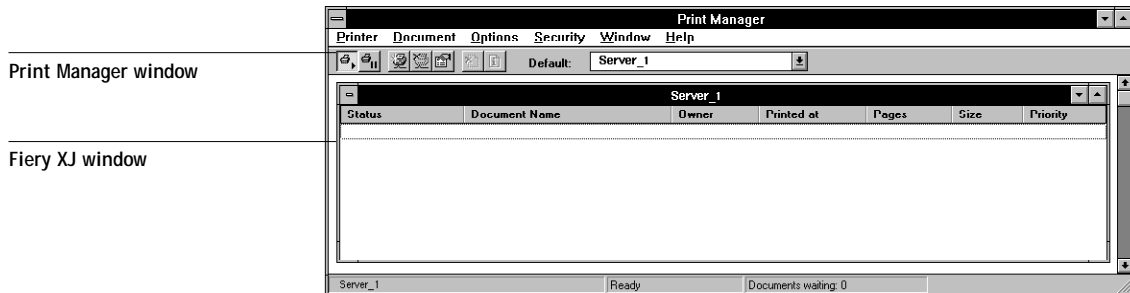
9. If you want to share the printer with Windows clients, select "Share this printer on the network"; click OK.

Usually, Windows NT clients are running Windows 95 or Windows for Workgroups on a Microsoft network.

The first eight letters of the Printer Name are automatically entered as the default Share Name for Windows NT clients. You can change this name if you wish.

You can share the Fiery XJ on the network if your Windows NT workstation is connected to the printer over the network or by the parallel port.

10. To accept the default settings, click OK in the PostScript Printer Setup dialog box. Even though the Fiery XJ does not use halftoning, do not deselect Use Printer Halftoning.
The Fiery XJ now appears in its own Printer window in the Print Manager window.
11. In the Print Manager toolbar, select the Fiery XJ as the Default printer.



12. Complete the printer connection, according to your network type.
 - To configure the parallel connection, see “Completing the Windows NT 3.51 parallel connection” on page 62.
 - To configure the TCP/IP (Lpr port) connection, see “Completing the Windows NT 3.51 TCP/IP connection” on page 62.

Completing the Windows NT 3.51 connection

To print from Windows NT 3.51 you need to:

- Set up network servers, if any.
- Set up the Fiery XJ to accept print jobs from your computer.
- Configure a port on each Windows NT computer for the network or connection type.

Completing the Windows NT 3.51 parallel connection

The parallel port cable connects the Fiery XJ to a single computer.

Once you have installed the Windows NT PostScript printer driver and the Fiery XJ PPD, complete the setup for parallel port printing as follows:

TO SET UP PARALLEL PRINTING FOR WINDOWS NT 3.51:

1. In the Main group, double-click the Print Manager icon.
2. With the Fiery XJ window active, choose Properties from the Printer menu.
In the Printer Properties dialog box, confirm that LPT1 appears in the “Print to” pop-up menu.
3. Click Details to check and configure the defaults.
4. Select “Print Directly to Port” and click OK.
Since parallel port jobs are spooled on the Fiery XJ, selecting “Print Directly to Port” bypasses Windows NT Print Manager spooling.
5. Click OK to exit the Printer Properties dialog box.
The Fiery XJ is ready to accept parallel print jobs from your computer, using the Windows NT PostScript printer driver and the Fiery XJ PPD. When you select Print, your PostScript files will be transmitted over the parallel port connection to the Fiery XJ.

Completing the Windows NT 3.51 TCP/IP connection

Once you have installed the Windows NT 3.51 PostScript driver and the Fiery XJ PPD, complete the setup for the TCP/IP and lpr connection as follows:

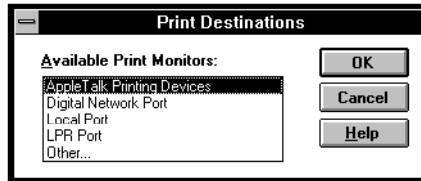
- Prepare the Fiery XJ to accept print jobs using TCP/IP and lpr protocols.
- Configure the workstation for the TCP/IP connection.

TO SET UP TCP/IP AND LPR PRINTING FOR WINDOWS NT 3.51:

1. In the Main group, double-click the Print Manager icon.
2. With the Fiery XJ window active, choose Properties from the Printer menu.

3. In the Print to list, scroll to Other.

The Print Destinations dialog box appears.



4. Select LPR Port and click OK.

This option is available if you installed TCP/IP with the LPR printing protocol when you installed Windows NT. See your Windows NT documentation for information.

5. In the “Add LPR compatible printer” dialog box, enter the DNS name or IP address of the Fiery XJ in the “Name or address of host providing lpd:” area.

You can print the Configuration page to check the IP address.

6. In the “Name of printer on that machine:” area, type the internal name of the Fiery XJ in lowercase letters.

The name must be one of these:

For 5750 copiers: print_5750, hold_5750.

For MajestiK copiers: print_5760/65, hold_5760/65.

For Regal copiers: print_5790, hold_5790.

For multiple devices, append the device number. For example: print_5760/65_1, print_5790_2.

NOTE: Type this name exactly as shown; it is required for communication with the Fiery XJ.

7. Click OK. The Printer Properties dialog box shows the Fiery XJ printing to IP Address:Internal name
8. Enter or verify the name of the Fiery XJ in the Printer Name area of the Create Printer dialog box, and then click OK.
9. Click OK in the window that appears.

When you select Print, your PostScript files are transmitted over the LPR Port connection to the Fiery XJ.

Fiery WebTools

Fiery WebTools allow you to remotely manage your Fiery XJ from the Internet or your company's intranet. The Fiery XJ has its own home page, from which you are able to select from a variety of functions including Status, WebSpooler, WebLink, and Installer.

For more information on using the Fiery WebTools, see the *User Guide*.

Setting up Fiery WebTools

In order for network users to access and use the Fiery WebTools, you need to set certain options in Network Setup and Printer Setup on the Fiery XJ Control Panel. You also need to prepare each user's workstation to communicate with the Fiery XJ over the Internet or intranet.

TO SET UP FIERY WEBTOOLS ON THE FIERY XJ:

1. In Fiery XJ Network Setup, select Ethernet Setup, then select TCP/IP Setup.
2. Set Enable TCP/IP to Yes.
3. Set a valid, unique IP Address for the Fiery XJ.
4. Set Enable HTTP to Yes.
5. Exit Network Setup, and select Yes at the Save Changes screen.
6. In Fiery XJ Printer Setup, set Publish Print Queue to Yes.
7. Exit Printer Setup, and select Yes at the Save Changes screen.

TO SET UP FIERY WEBTOOLS ON EACH USER'S WORKSTATION:

1. Enable TCP/IP networking.
2. Make sure the workstation has a valid, unique IP address.
3. Make sure an Internet browser that supports the Java language and frames, such as Netscape Navigator v3.0 or Microsoft Internet Explorer v3.0, is installed.

Make sure Java and JavaScript are enabled in your Internet browser.

For more information on setting up the Fiery XJ and your network, see the *Administrator Guide*.

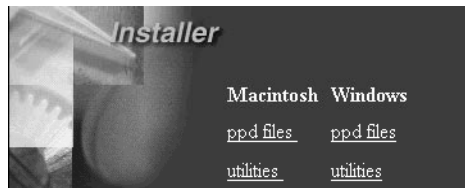
Using the WebTools Installer

The WebTools Installer duplicates the utilities and printer driver installers from the User Software CD, allowing you to easily download the current version of user software from the Fiery XJ to your workstation.

TO INSTALL PLUG-INS AND UTILITIES FROM THE WEBTOOLS INSTALLER:

1. Launch your Internet or intranet browser and enter the DNS name or IP address of the Fiery XJ.
2. Click the Installer button.

The Installer window appears.



3. Under the name of your operating system, click “utilities”.

For Macintosh, a folder named “Installers” is downloaded to the desktop in a BinHex-encoded, compressed format. If your internet browser is equipped with an expander utility such as Stuffit Expander™, the folder will be decoded and decompressed automatically.

For Windows, a dialog box appears, prompting you to save the file “Instalrs.exe” to the location you choose.

4. For Macintosh, if the Installers folder was not automatically decoded and decompressed, launch a utility that will perform that function.

For Windows, browse to the location where you want to save the Instalrs.exe file and click Save.

5. For Macintosh, open the Installers folder and double-click the specific installer for the plug-in or utility you want to install.

For instructions on installing Macintosh plug-ins and utilities, see “Installing Macintosh software” on page 1.

For Windows, double-click the Instalrs.exe file, browse to the location where you want to install the Instalrs folder, and click Next.

For instructions on installing Windows plug-ins and utilities, see “Installing Windows software” on page 15.

TO INSTALL THE PRINTER DRIVER FROM THE WEBTOOLS INSTALLER:

1. Launch your Internet or intranet browser and enter the DNS name or IP address of the Fiery XJ.
2. Click the Installer button.

The Installer window appears.



3. Under the name of your operating system, click “ppd files”.

For Macintosh, a folder named “Printer Driver” is downloaded to the desktop in a BinHex-encoded, compressed format. If your internet browser is equipped with an expander utility such as Stuffit Expander™, the folder will be decoded and decompressed automatically.

For Windows, a dialog box appears, prompting you to save the file “Prntdrv.exe” to the location you choose.

4. For Macintosh, if the Printer Driver folder was not automatically decoded and decompressed, launch a utility that will perform that function.

For Windows, browse to the location where you want to save the Prntdrv.exe file and click Save.

5. For Macintosh, proceed to “Using the Printer Driver Installer for Macintosh” on page 69.

On Macintosh systems, it is necessary to copy the Printer Driver files to a floppy disk in order to install them.

For Windows, double-click the Prntdrv.exe file, browse to the location where you want to install the Prnt_drv folder, and click Next.

For instructions on installing the printer driver for Windows 3.1x, see “Setting up printing with Windows 3.1x” on page 37; for Windows 95, see “Setting up printing with Windows 95” on page 42; for Windows NT, see “Setting up printing from Windows NT” on page 49.

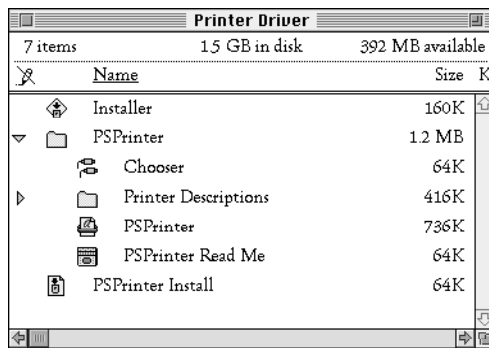
Using the Printer Driver Installer for Macintosh

The Printer Driver for Macintosh cannot be installed to the same disk drive from which it is being installed; therefore, it is necessary to copy the Printer Driver files to a floppy disk in order to use them.

TO PREPARE A PSPRINTER FLOPPY DISK:

1. Insert a blank floppy disk into the floppy disk drive.
2. Name or rename the floppy disk PSPrinter.
3. Open the Printer Driver folder.

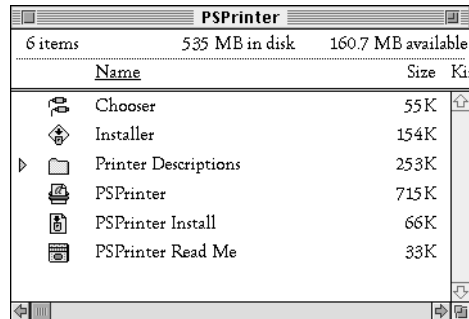
The contents of the folder are displayed.



4. Copy the file "Installer" to the floppy disk.
5. Copy the entire *contents* of the "PSPrinter" folder to the floppy disk.
Do not copy the PSPrinter folder itself; if you do, the printer driver will not install properly.

6. Copy the file "PSPrinter Install" to the floppy disk.

The floppy disk's file structure should appear as follows (if "by Name" is selected in the Finder's View menu):



For instructions on installing the Printer Driver for Macintosh, see "Setting up the Fiery XJ as a PostScript printer" on page 13.

Troubleshooting

This section describes problems that you may encounter while installing and setting up software.

On a Macintosh computer

Installing the Macintosh PostScript Printer Driver

- If the Printer Driver cannot autoselect the printer description file, when prompted open the System Folder:Extensions:Printer Descriptions folder and select the file that corresponds to your copier.

On a Windows computer

Setting up IPX (Novell) printing for Windows NT Workstation

- Install the Apple LaserWriter IIg before you attempt to “add a printer” for the Fiery XJ.

Installing the Adobe PostScript Printer Driver v4.1.1

If you are reinstalling the Adobe PostScript Printer Driver, you must delete any previous versions and related files from DOS before you can successfully install the driver. See the Adobe README file included with the Printer Driver for instructions.

Problems with Windows 95 or NT utilities

- If you are using Windows 95, make sure that IPX/SPX and TCP/IP networking protocols are both enabled.
See “Completing the Windows 95 IPX/SPX or IPX (Novell) connection” on page 46 for information.
- Make sure that either the NET_WIPX.DLL (Windows 95) or NET_WSCK.DLL (Windows NT) file is in the SYSTEM folder.
Make sure that only one file is installed in this folder and that it is the correct file for your system.
- Make sure that the NET_WSCK.INI file is in the WINDOWS folder.

Problems with Fiery XJ Scan

If you attempt to use the Fiery XJ Scan plug-in and receive the error message “Could not complete your request because of a program error”, reinstall the Fiery XJ *utilities* from the User Software CD. The necessary netlayer software is installed during installation of the utilities; therefore, it is not necessary to reinstall Fiery XJ Scan.

Problems with Windows 3.1x and SPX utilities

- Make sure that you moved the files from the UTILS/IPXSPX folder to the appropriate locations.
For instructions, see “Windows 3.1x” on page 27. If you do not have the correct version of all Novell software installed, you may experience a blank screen with a blinking cursor.
If you install the files and still encounter the problem, try the following suggestions. If these suggestions do not help, contact Novell and request additional information about the “Black screen of death (BSOD)” problem. Information is also available on the WWW at <http://www.novell.com>
- If you are running a version of DOS Requestor earlier than version 1.20, or if you are running a version of VNETWARE.386 dated earlier than 8-17-94, you need to add to the [386 Enh] section of SYSTEM.INI a TimerCriticalSection=10000 (or =1000) line. The VNETWARE.386 driver for the DOS Requestor 1.20 defaults to 1000, which better supports mobile products.
- Make sure that your system and memory management configurations are set up properly. Any I/O, memory, or IRQ conflicts may cause this problem.
- If you have a VTDA.386 file, replace it with the latest file (available from Microsoft Corporation or WWW.MICROSOFT.COM). This file is not required for all systems. If it is required by your system, make sure that you have the correct version.
- If you have a WINSTART.BAT file, remove it.
- Virtualize the NIC's IRQ in the [VIPX] section of the System.ini if you use IBM LAN SUPPORT.
- If you are using Windows for Workgroups, you must also have the following files installed in your WINDOWS folder: NWCALLS.DLL, NWIPXSPX.DLL, NWLOCALE.DLL, MWNET.DLL, NWPSRV.DLL. These files are part of your Novell client software and you can install them from your installation disks or contact Novell for information.

Index

A

- Adobe Photoshop x, 11, 12, 35
- Adobe PostScript Printer Driver x
- Adobe PostScript printer driver
 - Windows 71
 - Windows 3.1x 37
 - Windows 95 42
- ADOBEPS.DRV *see* Adobe PostScript printer driver
- AppleTalk
 - connecting to Macintosh 14

C

- color management files
 - Macintosh 10
 - Windows 33
- ColorSync printer profiles
 - installing Macintosh 7
- connecting
 - Macintosh by AppleTalk 14
 - Windows 95 by IPX 46
 - Windows 95 by parallel port 45
 - Windows NT by parallel port 56, 62
 - Windows NT by TCP/IP 56, 62

D

- device name
 - Windows NT with TCP/IP 58, 63
- documentation ix

E

- EFICOLOR 11
- EFICOLOR files
 - Windows 34
- EFICOLOR separation tables
 - Macintosh 12
 - Windows 36

F

- Fiery WebTools
 - Installer 66
 - installing plug-ins and utilities from 66
 - installing the printer driver from 67
 - setting up 65
 - using the Printer Driver Installer for Macintosh 69
- Fiery XJ Scan
 - monitor settings file, Macintosh 11
 - monitor settings file, Windows 35
- Frame Type, IPX for Windows 95 47

I

- installing software
 - Macintosh 2, 6, 7
 - Windows 16, 19, 22
- internal name, for Windows NT with TCP/IP 58, 63
- IPX (Novell)
 - Windows 3.1x printing 40
 - Windows 95 46, 48

L

- LaserWriter Printer Driver x
- LPR, Windows NT 56, 62

M

- Macintosh
 - Color Files folder 9
 - color management files 10
 - ColorSync Profiles Installer 1
 - EFICOLOR files 11
 - EFICOLOR separation tables 12
 - Fiery XJ Export Installer 1
 - Fiery XJ Scan Installer 1
 - installing software 2, 6, 7
 - monitor settings file 11
 - Photoshop Separation Tables 11
 - PostScript printer driver 71

- selecting the PostScript Printer
 - Description (PPD) 14
 - system requirements x
 - Utilities Installer 1
- monitor settings file
 - Macintosh 11
 - Windows 35
- moving files
 - Windows 27

N

- NetWare
 - network port with Windows 3.1x 41
- NetWare client setup
 - Windows 3.1x 40
 - Windows 95 46, 48
- NET_WSCK.INI file 26
 - configuring for IPX/SPX 28
 - configuring for TCP/IP 30
 - editing 31
- Novell (IPX) *see* IPX (Novell)

P

- PageNOW! paging software x
- parallel port
 - Windows 95 45
 - Windows NT 56, 62
- Photoshop Separation Tables
 - Macintosh 11
- plug-ins
 - installing Macintosh 2
- PostScript printer driver
 - Macintosh 71
 - Windows NT 49
- problems, troubleshooting 71

S

- system requirements
 - Macintosh x
 - Windows x

T

- TCP/IP, Windows NT 56, 62
- troubleshooting 71

U

- User Software contents xi
- utilities
 - installing Macintosh 6
 - installing Windows 16, 19, 22

W

- Windows
 - Adobe PostScript printer driver 71
 - Clrfiles directory 32
 - color management files 33
 - EFICOLOR files 34
 - EFICOLOR separation tables 36
 - Fiery XJ Export Installer 15
 - Fiery XJ Scan Installer 15
 - installing software 16, 19, 22
 - monitor settings file 35
 - moving files 27
 - system requirements x
 - Utilities Installer 15
- Windows 3.1x
 - Adobe PostScript printer driver 37
 - IPX (Novell) printing 40
 - IPXSPX directory 27
 - NET.CFG file 27
 - selecting the PostScript Printer
 - Description (PPD) 38
- Windows 95
 - Adobe PostScript printer driver 42
 - Frame Type, for IPX 47
 - IPX/SPX 46
 - parallel port 45
 - selecting the PostScript Printer
 - Description (PPD) 43
- Windows NT
 - device name 58
 - parallel port 56, 62
 - PostScript printer driver 49
 - selecting the PostScript Printer
 - Description (PPD) 60
 - TCP/IP 56, 62