



# Splash M Series Color Server Getting Started Guide

## 1.0 INTRODUCTION

This *Getting Started Guide* contains instructions for the installation and configuration of the Splash M Series Color Server and the client workstations on your network. Follow these instructions each time you set up the Splash M Series Color Server in a different location, connect it to a different network, or connect it to a different color copier.

The Splash M Series Color Server comes standard with a 10/100base T network card, which you can connect to standard Ethernet (10baseT) or Fast Ethernet networks (100baseT). The color server automatically configures the card for Fast Ethernet if Fast Ethernet is detected.

Do not use a cross-over cable to connect your workstation directly to the Splash M Series. If you need a direct connection, use a mini-hub.

## 2.0 CONNECTING THE SPLASH M SERIES COLOR SERVER TO THE COPIER

***Do not power up the Splash M Series Color Server until instructed.***

To connect the Splash M Series Color Server to the copier, follow these steps:

1. ***Turn off the copier.***
2. Unpack the Splash M Series Color Server and place it near the copier.
3. Open the accessory box and remove the cables.
4. Connect the Splash M Series Color Server to the copier using the cable provided.
5. Connect the power cable to the Splash M Series Color Server and plug it into an outlet. Do not use an outlet on the same power circuit as the copier's outlet.
6. After connecting all the cables, ***turn on the copier.***



**Note** *The copier must be up and at a ready state in order for the Splash color server to set up proper communications with the copier. Do not turn on the server before the copier is ready.*

7. When the copier is in ready state, ***turn on the Splash M Series Color Server.***

Refer to *Normal Initialization Process* on page 2 for information on the server initialization process. Once the server has completed its initialization, a startup test page prints, indicating that the color server is properly connected to the copier.

8. ***Turn off the Splash M Series Color Server.***

# Getting Started Guide

## 2.1 Normal Initialization Process

As the Splash color server initializes, the following sequence of events occur:

1. The green LED illuminates, indicating that power is on.
2. The Splash color server emits one long and two short beeps.
3. After about 30 to 45 seconds, the green activity light on the floppy drive illuminates briefly and the Splash color server emits one short beep.
4. After about 45 seconds, the Splash color server emits six beeps; two short, two long, and two short. This is a signal from the color server indicating that it is ready to accept the Configuration disk. If the disk is not inserted, the color server continues to initialize. The beeps are a normal part of the initialization process.

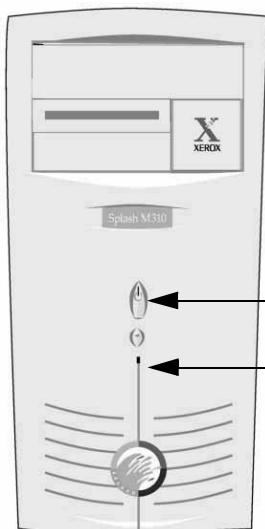


*This time can vary if the Splash color server performs a disk check.*

5. The status LED alternately flashes between yellow and red several times and then changes to flashing yellow.
6. The Splash color server prints a startup Test Page.

When powering down the color server, wait for all jobs to complete, turn off the Splash color server, and then turn off the copier.

## 2.2 Splash M Series Status Lights



LED	Description
Green, not flashing	Power indicator.
Amber, slowly flashing	Splash M Series Color Server is idle. Normal operation.
Amber, quickly flashing	Splash M Series Color Server activity, such as spooling, ripping, or printing.
Red, off	No problems.
Red, one flash	Add paper.
Red, two flashes	Toner or fuser oil problem.
Red, three flashes	Paper jam.
Red, four flashes	Door open, copier disconnected or other similar error.
No amber or red	Hardware problem or floppy inserted at the wrong time.

## 3.0 SYSTEM REQUIREMENTS

The minimum system requirements for using the Splash M Series Color Server are:

- One of the following color copiers:
  - Xerox 5750/Acolor 620
  - Xerox 5790/Acolor 935
  - Xerox 5799/Acolor 936
  
- Supported network printing protocols over EtherNet™:
  - Windows™ Networks—TCP/IP
  - EtherTalk™ Phase II
  - Novell NetWare™—IPX
  - Unix compatible— LPD over TCP/IP
  
- Macintosh clients:
  - PowerMac
  - System 7.5.5 or later
  - EtherNet network interface
  - 8MB free RAM
  - 4MB hard disk space
  - 640x480 video resolution
  - Open Transport 1.1.1 or above
  - LaserWriter driver 8.3.4 or above
  
- Minimum system requirements for Windows Network clients:
  - Microsoft Windows Network client software installed on the workstation
  - PostScript print driver (Microsoft recommended)
  - 2MB hard disk space
  - Windows 95, Windows 98 or NT 3.51/4.0
  - TCP/IP protocol on workstation
  
- Additional minimum requirements for Novell NetWare include:
  - NetWare client software installed on the workstation
  - PostScript print driver (Microsoft recommended)
  - 2MB hard disk space
  - NetWare file server running NetWare NOS version 3.11 or later
  
- Client system must also have application software that can produce PostScript output.
- 10baseT (twisted-pair) or 100baseT network cable.



### Note

*If your network uses BNC/Thinnet media, you must use a hub that includes a BNC port to connect the Splash M Series Color Server to the network.*

# Getting Started Guide

---

## 4.0 CONNECTING THE SPLASH M SERIES COLOR SERVER TO THE NETWORK

To physically connect the Splash color server to the network:

1. Remove any disk from the color server's floppy drive and turn off the color server if you have not already done so.
2. Connect the color server to the network.

The Splash M Series Color Server has a 10/100baseT network card that supports twisted pair. Figure 1 illustrates the network connectors.

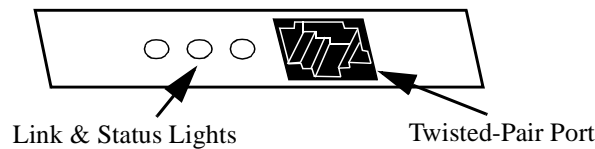


Figure 1: Splash M Series Color Server Network Connectors

You can connect the color server to standard Ethernet (10baseT) or Fast Ethernet networks (100baseT). The color server automatically configures the card for Fast Ethernet if Fast Ethernet is detected.

Do not use a cross-over cable to connect your workstation directly to the color server. If you need a direct connection, use a mini-hub.

***Do not power up the Splash M Series Color Server.***

## 4.1 Configuring the Server for the Copier and Network

Locate the media package labeled **Setup Disks** that shipped with the Splash M Series Color Server. The package contains two sets of **Copier Configuration** diskettes; one set is labeled U.S. and the other set is labeled European.

- If your site uses default Imperial page sizes, configure the server using the U.S. **Copier Configuration** diskettes.
- If your site uses default metric page sizes, configure the server using the European **Copier Configuration** diskettes.

The **Copier Configuration** diskette contains a file called **DP.INI**, which has the parameters for configuring the network, print/hold queue, and page parameters for the Splash M Series Color Server.

**DP.INI** is a text file that can be modified on a user workstation with a standard text editor. There are no protected fields in the file.

Edit only the parameters after the equal signs (=).

Do not delete any comment symbols.

### 4.1.1 Special Instructions for Printing Through Novell Servers

If you are printing through Novell servers, you must create a queue and color server account for the Splash M Series Color Server using **PCONSOLE**. For a complete description of **PCONSOLE**, or more information about Novell print servers, refer to your Novell documentation.

If users are printing through a Novell print server, complete the following steps.

1. Log into the file server where the Splash M Series Color Server queue will reside.

If you are using NetWare 3.x, log in as Supervisor from an attached workstation.

If you are using NetWare V4.0 or greater, log into the server administrator account, adding the **/bs** switch to the login command.

2. Note the file server's name. This is the name you will use in the DP.INI file for the **pq0novserver** and **pq1novserver** parameters.
3. In the PUBLIC subdirectory on SYS: volume, enter the command **PCONSOLE**.
4. To create a print server account for the Splash M Series Color Server:
  - a. From the **PCONSOLE Main** menu, select **Print Server Information**.
  - b. Press the **Insert** key and enter the print server account name. The name cannot contain more than 12 characters and cannot contain special characters or spaces. *Do not enter a password.* Leave the password field blank.
  - c. Press **Enter**.
5. Make note of the name you entered. This is the name you will use in the DP.INI file for the **pq0novpserver** and **pq1novpserver** parameters.
6. Press the **Escape** key multiple times to return to the main menu.
7. To create a print server queue for the Splash M Series Color Server:
  - a. From the main menu, select **Print Queue Information**.

# Getting Started Guide

---

- b. Press the **Insert** key and enter the queue name. The name cannot contain more than 12 characters and cannot contain special characters or spaces. Since this is the name users will see from their workstations it should be descriptive of the device or the device's location.
  - c. Make note of the name you enter. This is the name you will use in the DP.INI file for the **pq0novqueue** and **pq1novqueue** parameters.
  - d. Highlight the name you entered and press **Enter**.
  - e. From the new menu, select **Queue Servers**.
  - f. Press the **Insert** key and select the print server account name you created in Step 4 and press **Enter**. This step assigns the account to the queue.
8. Press the **Escape** key multiple times to return to the main menu.
  9. Exit **PCONSOLE**.

## 4.2 Modifying the DP.INI File

To configure and load the **DP.INI** file onto the Splash M Series Color Server:

1. Make a copy of the **Copier Configuration** diskette for the copier model to which the Splash M Series Color Server is connected.
2. Edit the **DP.INI** file on the copy of the **Copier Configuration** diskette from a user workstation. (Refer to the **DP.INI** description that follows these steps.)
3. Once **DP.INI** is modified, save the changes onto the copy of the **Copier Configuration** diskette.

The DP.INI file contains the following configurable options:

**hostname**—Specifies the name of the Splash M Series Color Server. Valid values are alphanumeric characters and underscores. The name cannot include spaces or periods. The default value is **SPLASHM**.



*Names in the DP.INI file can contain up to 79 characters but the names are truncated, depending on the maximum number of characters supported by the network type. For example, on EtherTalk the names are truncated to 32. If the names are truncated, a warning message is printed on the configuration information sheet.*

**hostname**—Specifies the name of the Splash M Series Color Server. Valid values are alphanumeric characters and underscores. The name cannot include spaces or periods. The default value is **SPLASHM**.

**domain**—Specifies the name of the TCP/IP domain. The default value is **nonet.net**.

**dhcp\_client**—Specifies whether or not the color server uses a DHCP server to obtain a dynamic IP address. Valid values are **yes** and **no**. If **dhcp\_client** is **no**, the color server must have a permanent IP address and subnetmask assigned, using the **ipaddress** and **subnetmask** parameters. The default value for **dhcp\_client** is **no**.

**ipaddress**—Specifies the IP address assigned to the color server. This parameter is required. If **dhcp\_client** is set to **yes** and no DHCP services are found on the network, the specified IP address is used. The default value for **ipaddress** is **192.168.0.254**.

**subnetmask**—Specifies the subnetmask assigned to the color server. This parameter is required. If **dhcp\_client** is set to **yes** and no DHCP services are found on the network, the specified subnet mask is used. The default value for **subnetmask** is **255.255.255.0**.

**defaultgateway0**—Specifies the permanent IP address assigned to the gateway or router. This parameter is ignored if there is no value after the equal sign (=), which is the default.

**nameserver0**—Specifies the permanent IP address assigned to the gateway or router. This parameter is ignored if there is no value after the equal sign (=), which is the default.

**workgroup**—Specifies the Windows domain or Windows Workgroup to which the color server belongs. The name can be up to 15 characters long. Valid values are alphanumeric characters and underscores. The name cannot include spaces or periods. If the network does not use Windows domains or Workgroups, leave this parameter blank (default).

**nt\_domain\_controller**—Specifies the IP address of the NT domain controller for the color server. If an NT domain controller does not exist, leave this parameter blank (default).

**wins\_server**—Specifies the IP address of the WINS server for the color server. If a WINS server does not exist, leave this parameter blank (default).

**zone**—Specifies the name of the AppleTalk zone that the color server uses for Macintosh printing. The name can contain up to 32 characters. Valid values are alphanumeric characters, underscores, spaces, and periods. If Macintosh workstations are not printing to the color server, leave this parameter blank (default).

The DP.INI file contains two sections of parameters called **Printer 0** and **Printer 1**: one section for configuring the color server print queue and the other for configuring the color server hold queue. Each section contains the following parameters, where # can equal either **0** (parameters in **Printer 0** section) or **1** (parameters in **Printer 1** section):

**pq#**—Specifies the color server printer name that is used for lpd queue, Windows printer sharename, and AppleTalk LaserWriter name. Valid values are alphanumeric characters and underscores. The name cannot include spaces or periods. The default value for **Printer 0** is **Splash\_print**. The default value for **Printer 1** is **Splash\_hold**.

**pq#device**—Specifies the copier to which the color server is connected. Valid values are **5750** (DocuColor™ 5750), **5790**, and **5799** (DocuColor™ 5799). Note that the values for **pq0device** and **pq1device** must be identical.

**pq#type**—Specifies the type of queue: print or hold. Valid values are **PRINT** (print queue), and **HOLD** (hold queue).

**pq#wintcp**—Enables/disables the color server support for TCP/IP protocol. Valid values are **on** (enable support) and **off** (disable support). The default value is **on**.

**pq#ethertalk**—Enables/disables the color server support for AppleTalk protocol. Valid values are **on** (enable support) and **off** (disable support). The default value is **on**.

# Getting Started Guide

---

**pq#novell**—Enables/disables the color server support for Novell Netware (IPX) protocol. Valid values are **on** (enable support) and **off** (disable support). The default value is **off**. If **pq#novell** is **on**, values must be specified for **pq#novserver**, **pq#novqueue**, and **pq#novpserver** parameters.

**pq#novserver**—Specifies the name of the Novell server that contains the queue for the color server.

**pq#novqueue**—Specifies the name of the print server queue.

**pq#novpserver**—Specifies the name of the print server account.

To configure a color server printer without a hold queue, add a comment symbol in front of all parameters defined in **Printer 1** or delete them.

The DP.INI file contains the following configurable page options:

**SEPARATOR**—Specifies whether or not the color server prints a separator page at the end of each job. Valid values are **true** (print separator page) and **false** (do not print separator page). The default value is **false**.



## Note

*There are some conditions under which a separator page is not created or printed, even though **SEPARATOR** is set to **true**. These conditions are:*

- *When the job is sent to a DPI file instead of the copier.*
- *When **Manual Feed** is selected as the paper source.*
- *When one of the sorter options is selected for **Page Order**.*
- *When the job is printing and it is stopped and cancelled (recall that separator pages print at the end of the job).*

*Refer to the **Splash M Series User's Manual** for more information.*

**FORCEPAGE**—Causes the color server to convert certain page sizes from english to metric or vice versa. Valid values are:

- **metric**—Converts letter to A4 and converts legal and tabloid to A3.
- **english**—Converts A4 to letter and converts A3 to tabloid.
- **off**—Default value; does not convert page sizes.

**DEFAULTPAGE**—Specifies what paper size to use when the PostScript file does not contain a page size. Valid values are **letter** (8.5in x 11in) and **a4** (21.00cm x 29.70cm). Note that value's case determines the orientation of the page (e.g., lowercase values specify long edge feed). The default is **letter** (8.5in x 11in).

## 4.3 Loading the Configuration files

1. Power on the color server and wait for server to emit the configuration signal, which is a series of beeps: two short, two long, and two short.
2. Insert the **Copier Configuration** diskette in the color server floppy drive. You have five seconds to insert the modified **Copier Configuration** disk in the color server floppy drive.

When the color server finishes downloading the configuration, an information sheet and Startup Test page prints. The color server is now configured and running.

3. Remove and store the Copier Configuration diskette in a safe place.



If the configuration is incorrect or an error occurs while the color server starts up, an information sheet prints informing you that the configuration was unsuccessful. Check the DP.INI file, make the necessary corrections, power off the color server, and repeat steps 1 and 2.

## 5.0 CLIENT INSTALLATION OVERVIEW

The Client software for the Splash M Series Color Server includes printer files and the Viewer application (which allows users to view and manage print jobs). Thus, there are two options for installing the Splash M Series client software on the workstation:

1. You can install just the printer files.
2. You can install the Viewer software, which installs both the Viewer application and the printer files.

It is not necessary to install the Viewer to enable printer support! Instructions for the various installation options are as follows:


- If you are installing printer files only,
  - Refer to *Section 5.1 on page 10* for Macintosh client instructions
  - Refer to *Section 5.2 on page 14* for Windows 95/98 client instructions
  - Refer to *Section 5.3 on page 21* for Windows NT 4.0 client instructions
- If you are installing the Viewer application, which includes the installation of printer files,
  - Refer to *Section 5.4 on page 26* for Macintosh client instructions
  - Refer to *Section 5.5 on page 30* for Windows 95/98 client instructions
  - Refer to *Section 5.6 on page 38* for Windows NT 4.0 client instructions

# Getting Started Guide

---

## 5.1 Installing Printer Support Only: Macintosh Clients


The Splash CD-ROM that shipped with the color server contains a folder named **Mac**. This folder has all files you need to install and setup Splash M Series printer support on the Macintosh.

 **Note** *If you are installing Splash M Series printer files on a non-U.S. English Macintosh, you must use the installation procedure in Section 5.1.2.*

### 5.1.1 Installing an M Series Printer on a US English Macintosh Client

1. Insert the Splash CD-ROM that shipped with the color server into the workstation's CD-ROM drive.
2. On the Splash CD-ROM, locate the **Mac:English** folder and copy the **Splash M210 v1.0**, **Splash M310 v1.0**, and **Splash M410 v1.0** files into the **System Folder:Extensions:Printer Descriptions** folder.
3. If the workstation has PageMaker, locate the **PageMaker PPD** files on the CD-ROM in **Mac:English:PageMaker** folder. Also copy the **PageMaker PPD** files to the **System Folder:Extensions:Printer Descriptions** folder.
4. Go to Section 5.1.3, on page 11 to setup the printer.

### 5.1.2 Installing an M Series Printer on a Non-US English Macintosh Client

 **Note** *In this set of instructions, English names are used when referring to the copy destination folders. You must substitute the appropriate non-English folder names.*

1. On a US English Macintosh system, the folder that contains the printer description files is the **System Folder:Extensions:Printer Descriptions** folder. Locate the corresponding folder on your system in the system language. This is the folder where the Splash printer description files will be copied.
2. Insert the Splash CD-ROM that shipped with the color server into the workstation's CD-ROM drive.
3. On the Splash CD-ROM, locate the **Mac:English** folder and copy the **Splash M210 v1.0**, **Splash M310 v1.0**, and **Splash M410 v1.0** files into the **System Folder:Extensions:Printer Descriptions** folder that you located in Step 1.
4. If the workstation has PageMaker, locate the **PageMaker PPD** files on the CD-ROM in **Mac:English:PageMaker** folder. Also copy the **PageMaker PPD** files to the **System Folder:Extensions:Printer Descriptions** folder that you located in Step 1.
5. Go to Section 5.1.3, on page 11 to setup the printer.

## 5.1.3 Printer Setup

To set up the printer on your workstation:

1. Make sure **AppleTalk is Active**.
2. From the **Apple Menu**, select **Chooser**. The **Chooser Control Panel**, shown in Figure 2, appears.

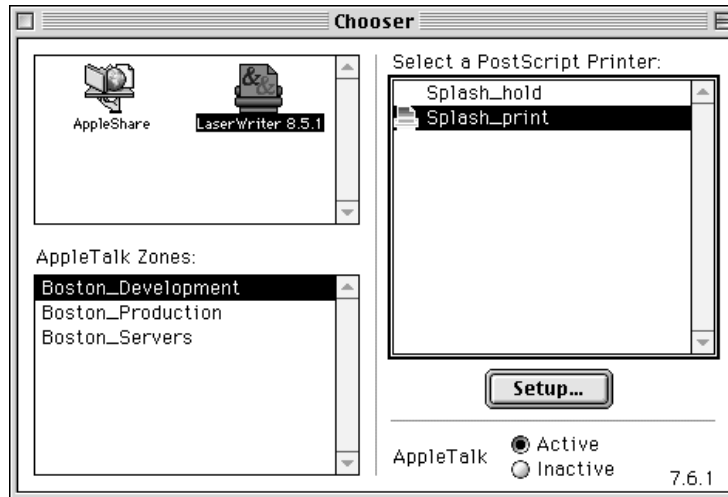


Figure 2: Sample Chooser Control Panel

3. Select **LaserWriter 8.4.3** (or above) and a **Zone** (if configured).
4. When the printer list appears, click on the appropriate Splash M Series Color Server (model M210, M310, or M410), and click on **Create** or **Setup**, depending on whether **Desktop Printing** is enabled.

The **Select a PostScript™ Printer Description File** dialog box, shown in Figure 3, appears

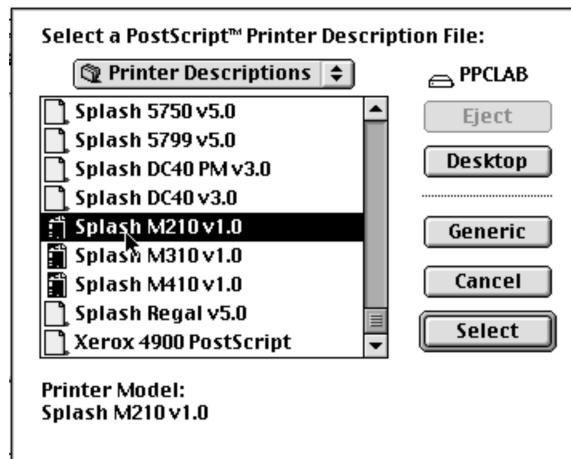


Figure 3: Select a PostScript Printer Description File Dialog Box

# Getting Started Guide

---

5. Select the printer model (**Splash M210 v1.0**, **Splash M310 v1.0**, or **Splash M410 v1.0**) that matches the server model you selected in Step 4, then click **Select**.
6. Click on **Setup**. The **Current Printer Description File** dialog box (Figure 4) appears when the workstation has finished setting up the printer.

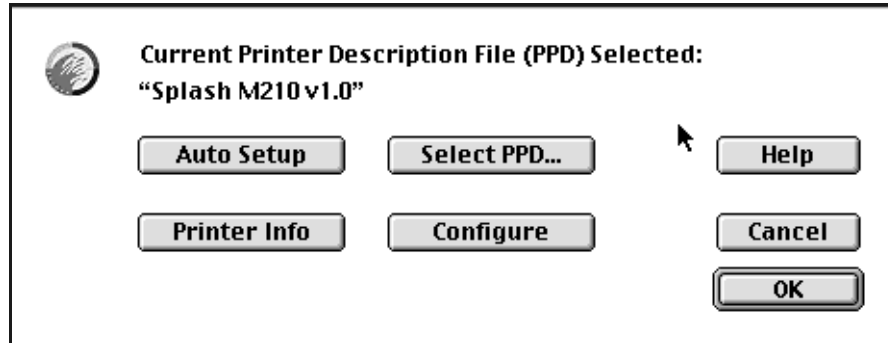


Figure 4: Current Printer Description File Dialog Box

7. Click on **Configure**. The **Installable Options** dialog box, shown in Figure 5, appears.

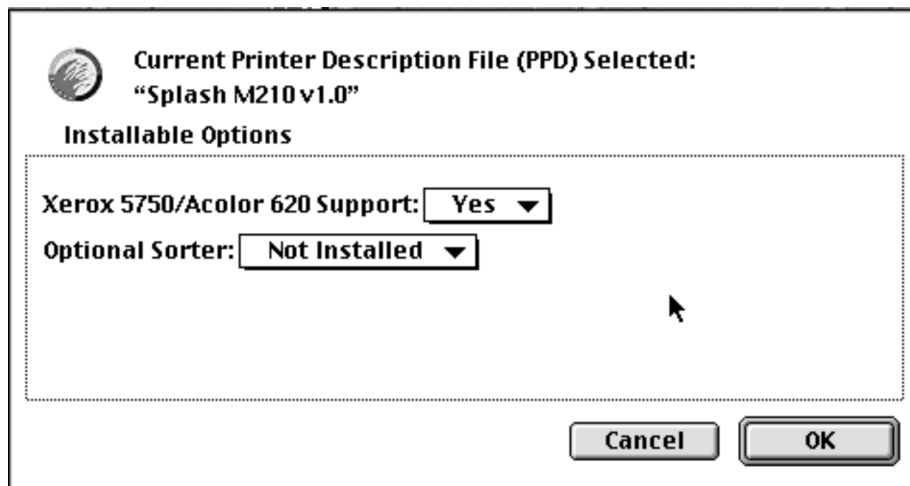


Figure 5: Installable Options Dialog Box

8. Follow these steps to configure all of the **Installable options**:
  - a. Select the **Xerox 5750/Acolor 620 Support** option from the **Installable options** list. This option enables/disables **12in x 18in**, **Postcard**, and **Tray 4** support. This option also disables/enables **Group in Sorter** and **Group in Sorter Reverse**, which are not supported by the Xerox 5750/Acolor 620. **Xerox 5750/Acolor 620 Support** is enabled (**Yes**) by default.

If your color server is connected to a Xerox 5750/Acolor 620 copier, use the default (**Yes**).

If your color server is connected to a Xerox 5790/Acolor 935 or Xerox 5799/Acolor 936 copier, set this option to **No**.

- b. Select the **Optional Sorter** option from the **Installable options** list. This option enables/disables the Splash M Series sorter features. This option is disabled (**Not Installed**) by default.

If the copier connected to your color server has a sorter attached, set this option to **Installed**.

If the copier does not have a sorter, use the default (**Not Installed**).

- c. Click **OK**.

9. On the **Current Printer Description File** dialog box, click **OK**.

10. Close the **Chooser Control Panel**.

The installation is now complete and you can start sending print jobs to the color server. The printer is installed with a set of default options. You can use these defaults, specify new defaults (which will apply to all your print jobs), or select new options on a job-by-job basis. For more information, refer to the *Splash M Series User's Manual*.

# Getting Started Guide

---

## 5.2 Installing Printer Support Only: Windows 95/98 Clients

The Splash CD-ROM that shipped with the color server contains two folders named **Win95** and **Win98**. Choose the folder that matches the operating system on your workstation. This folder has all the files you need to install and setup the print drivers on the workstation.



**Note** *If you are installing Splash M Series printer files on a non-U.S. English Windows 95/98 workstation, you may optionally use the installation procedure in Section 5.2.2. This procedure contains extra steps, but it will minimize the amount of US English that appears in the Printer Properties dialog box on the workstation.*

At least one of the network clients listed below must be installed on your workstation to print to the Splash M Series Color Server:

- Microsoft Client for NetWare Networks
- Novell 32 Client
- Microsoft Client for Microsoft Networks

### 5.2.1 Installing an M Series Printer on a US English Windows 95/98 Client

To add the printer to your workstation printer folder, start the **Add Printer Wizard** by clicking on **Start, Settings, Printers** and **Add Printers**, then follow the prompts.

1. When the **Add Printer Wizard** prompts for a Local Printer or Network Printer, specify Network Printer and click **Next**.
2. When the **Add Printer Wizard** prompts for a network path or queue name, enter the Windows network name of the Splash M Series Color Server's configured print queue. If the hostname is **splashm** and the print queue name is **splash\_print**, the Windows network name is **\\splashm\splash\_print**.
3. Insert the Splash CD-ROM that shipped with the color server in your workstation CD-ROM drive.
4. Click on **Have Disk**, then **Browse**.
5. Open the appropriate folder for your operating system on the CD-ROM (**win95** or **win98**), then open the **English** language folder.
6. In the **English** folder, choose the **OEMSETUP.INF** file, and click **OK**.
7. When the **Add Printer Wizard** prompts for the printer model, select one of the following options, according to the model of the Splash M Series Color Server you specified in Step 2:
  - **Splash M210 v1.0**
  - **Splash M310 v1.0**
  - **Splash M410 v1.0**
8. Click the **Next** button.

9. When the **Add Printer Wizard** prompts for a printer name, type the desired local logical printer name and append “\_hold” if you are adding a hold queue or “\_print” if you are adding a print queue. The reason for adding “\_hold” or “\_print” is because both queues are represented on the network as identical printer icons (Figure 6).

Adding “\_print” or “\_hold” to the name identifies the queue type associated with the icon.

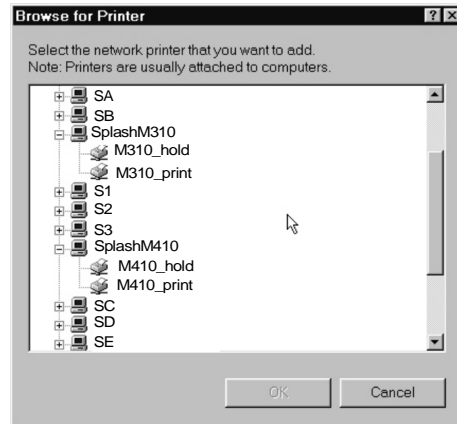


Figure 6: Color Server Queues

10. When the **Add Printer Wizard** asks if you want to print the test page, click **Yes**. After the test page prints, click **Yes** again (even if the test page prints incorrectly).
11. Go to Section 5.2.3, on page 17 to setup the printer.

## 5.2.2 Installing an M Series Printer on a Non-US English Windows 95/98 Client

1. If there are no other PostScript printers installed on the workstation, install a dummy, local, PostScript printer from your operating system install media:
  - a. Start the **Add Printer Wizard** by clicking on **Start, Settings, Printers** and **Add Printers**.
  - b. When the **Add Printer Wizard** prompts you to specify either a **Local Printer** or **Network Printer**, select **Local Printer** and click **Next**.
  - c. Follow the prompts. When **Add Printer Wizard** prompts you for the **Manufacturer** and **Model** of the printer, choose **HP** and **HP LaserJet III Si PostScript**. This copies the non-U.S. English, printer driver software to your system.
2. To begin the installation of the M Series printer, restart the **Add Printer Wizard**.
3. When you are prompted for a **Local Printer** or **Network Printer**, specify **Network Printer** and click **Next**.
4. When you are prompted for a network path or queue name, enter the Windows network name of the Splash M Series Color Server's configured print queue. If the hostname is **splashm** and the print queue name is **splash\_print**, the Windows network name is **\\splashm\splash\_print**.
5. Insert Splash CD-ROM in your workstation CD-ROM drive.

# Getting Started Guide

---

6. Click on **Have Disk**, then **Browse**.
7. Open the appropriate folder for your operating system on the CD-ROM (**win95** or **win98**), then open the **English** language folder.
8. In the **English** folder, choose the **OEMSETUP.INF** file, and click **OK**.
9. When the **Add Printer Wizard** prompts for the printer model, select one of the following options, according to the model of the Splash M Series Color Server you specified in Step 4:
  - **Splash M210 v1.0**
  - **Splash M310 v1.0**
  - **Splash M410 v1.0**
10. Click the **Next** button.
11. If the **Add Printer Wizard** prompts you to keep or replace the printer driver software, select **KEEP THE EXISTING DRIVER** and click **Next**.

*If you choose Replace the existing driver, the U.S.English print driver will be installed, overwriting the non-U.S. English print driver.*

12. When the **Add Printer Wizard** prompts for a printer name, type the desired local logical printer name and append “\_hold” if you are adding a hold queue or “\_print” if you are adding a print queue. The reason for adding “\_hold” or “\_print” is because both queues are represented on the network as identical printer icons (Figure 7).

Adding “\_print” or “\_hold” to the name identifies the queue type associated with the icon.

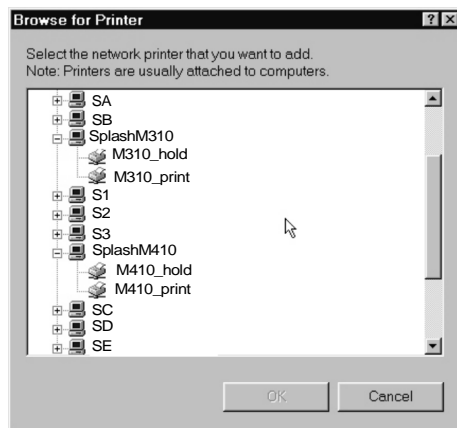


Figure 7: Color Server Queues

13. When the **Add Printer Wizard** asks if you want to print the test page, click **Yes**. After the test page prints, click **Yes** again (even if the test page prints incorrectly).
14. If the **Add Printer Wizard** asks you if you want to keep any files that are in the language of your workstation, keep the files.
15. Go to Section 5.2.3, on page 17 to setup the printer.



## 5.2.3 Printer Setup

After adding the printer, configure it by following these steps:

1. Open **Printer Properties** by right-clicking on the printer icon and left-clicking on **Properties**. The **Printer Properties** dialog box, shown in Figure 8, appears.

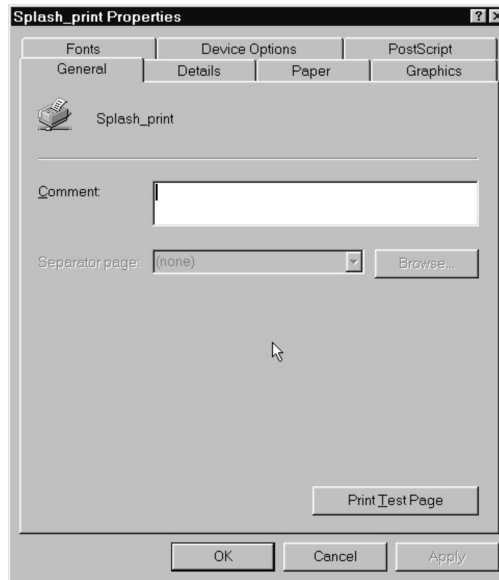


Figure 8: Printer Properties Dialog Box

2. Click on **Details**. The **Details** tab, shown in Figure 9, appears.

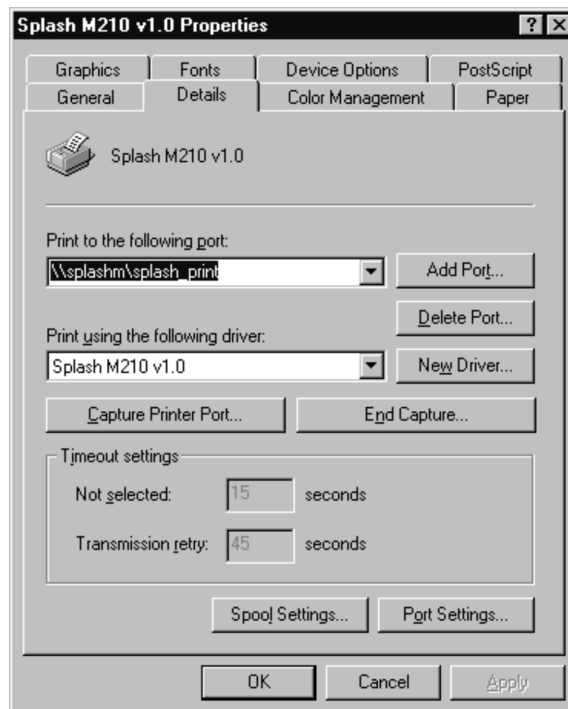


Figure 9: Details Tab

# Getting Started Guide

---

3. Click on the **Spool Settings** button. The **Spool Settings** dialog box, shown in Figure 10, appears.

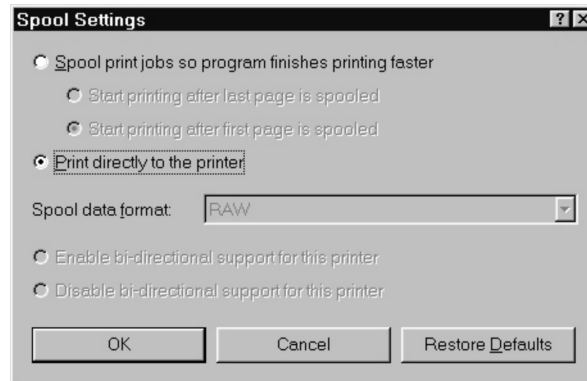


Figure 10: Spool Settings Dialog Box

4. Click on **Print directly to printer** then click **OK**. The **Spool Setting** dialog box closes, but the **Details** tab (Figure 9) is still displayed.
5. On the **Details** tab, switch to the **PostScript** tab by clicking on **PostScript**. The **PostScript** tab, shown in Figure 11, appears.

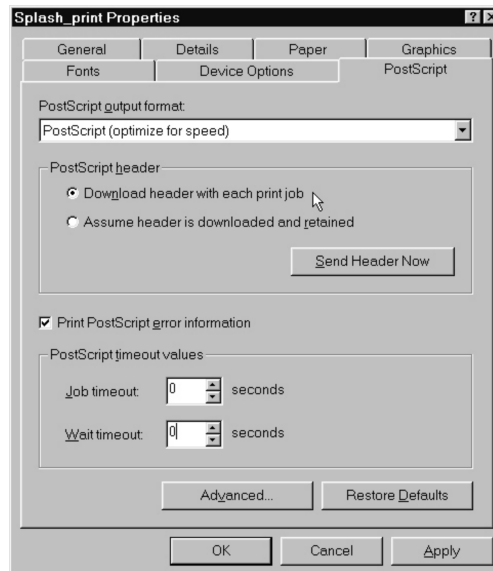


Figure 11: PostScript Tab

6. On the **PostScript** tab, click **Advanced**. The **Advanced PostScript** dialog box, shown in Figure 12, appears.

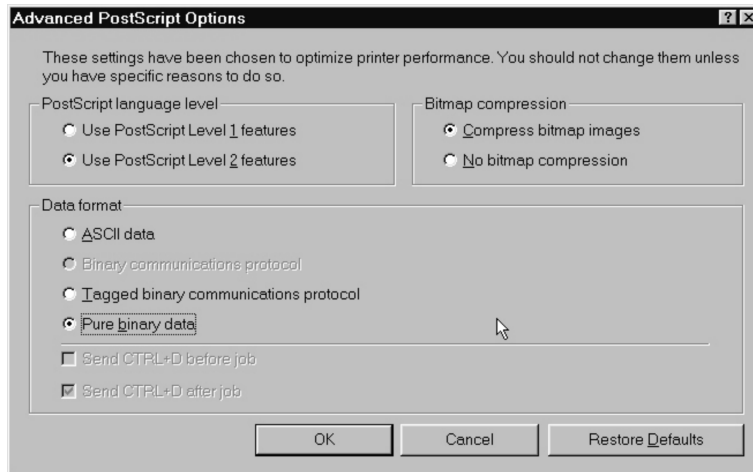


Figure 12: Advanced PostScript Dialog Box

7. Set the following options:
  - *Use PostScript Level 2 features*
  - *Pure binary data*
  - *Compress bitmap images*
8. Click **OK**. The **Advanced PostScript** dialog box closes, but the **PostScript** tab is still displayed.
9. Switch from the **PostScript** tab to the **Device Options** tab by clicking on **Device Options**. The tab shown in Figure 13 appears.

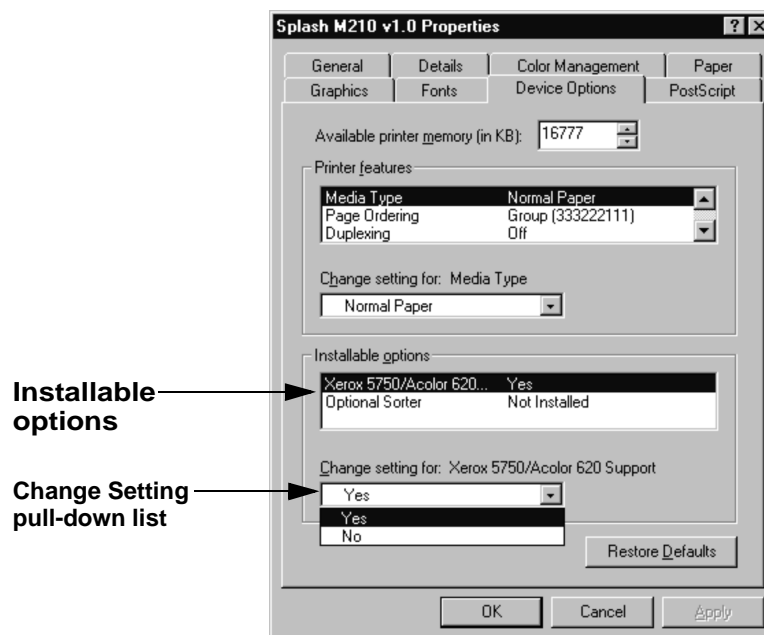


Figure 13: Device Options Tab

# Getting Started Guide

---

## 10. To configure all of the **Installable options**:

- a. Select the **Xerox 5750/Acolor 620 Support** option from the **Installable options** list. This option enables/disables **12in x 18in, Postcard, and Tray 4** support. This option also disables/enables **Group in Sorter** and **Group in Sorter Reverse**, which are not supported by the Xerox 5750/Acolor 620 copier. **Xerox 5750/Acolor 620 Support** is enabled (**Yes**) by default.

If your color server is connected to a Xerox 5750/Acolor 620 copier, use the default (**Yes**).

If your color server is connected to a Xerox 5790/Acolor 935 or Xerox 5799/Acolor 936 copier, use the **Change Setting** pull-down list to set this option to **No**.

- b. Select the **Optional Sorter** option from the **Installable options** list. This option enables/disables the Splash M Series sorter features. This option is disabled (**Not Installed**) by default.

If the copier connected to your color server has a sorter attached, use the **Change Setting** pull-down list to set this option to **Installed**.


If the copier does not have a sorter, use the default (**Not Installed**.)

- c. Click **OK**.

The installation is now complete and you can start sending print jobs to the color server. The printer is installed with a set of default options. You can use these defaults, specify new defaults (which will apply to all your print jobs), or select new options on a job-by-job basis. For more information, refer to the *Splash M Series User's Manual*.

## 5.3 Installing Printer Support Only: Windows NT 4.0 Clients

The Splash CD-ROM that shipped with the color server contains a folder named **Winnt4**. This folder has all the files you need to install and setup the print drivers on the workstation.


 **Note** *If you are installing M Series printer files on a non-U.S. English Windows NT 4.0 workstation, you may optionally use the installation procedure in Section 5.3.2. This procedure contains extra steps, but it will minimize the amount of US English that appears in the Printer Properties dialog box on the workstation.*

At least one of the network clients listed below must be installed on your workstation to print to the Splash M Series Color Server:

- Microsoft Client for NetWare Networks
- Novell Client
- Microsoft Client for Microsoft Networks
- LPR

### 5.3.1 Installing an M Series Printer on a US English Windows Nt4.0 Client

1. Logon to the workstation as a local administrator.
2. Start the **Add Printer Wizard** by clicking on **Start, Settings, Printers** and **Add Printers**.
3. When the **Add Printer Wizard** prompts for **My Computer** or **Network Printer Server**, select **Network Printer Server** and click **Next**.
4. When the **Connect to Printer** dialog box appears, enter the Windows NT network path for the Splash M Series Color Server's configured print queue. If the hostname is **splashm** and the print queue name is **splash\_print**, the Windows NT network name is **\\splashm\splash\_print**.
5. Click **OK**. If the **Connect to Printer Warning** box appears, click **OK**.
6. When the **Driver Setup** window appears, click on **Have Disk**.

 **Note** *Always click on **Have Disk** regardless of whether or not this is the first time you are adding a printer to your workstation.*

7. Insert the Splash CD-ROM that shipped with the color server in your workstation CD-ROM drive.
8. When the **Install from Disk** window appears, click **Browse**.
9. When the **Locate File** dialog box appears, browse the Splash CD-ROM and locate the **Nt4\English** folder.
10. In the **Nt4\English** folder, open the **splashm.inf** file.
11. When the **Add Printer Wizard** prompts for the printer model, select one of the following options, according to the model of the Splash M Series Color Server:
  - **Splash M210 v1.0**
  - **Splash M310 v1.0**
  - **Splash M410 v1.0**

# Getting Started Guide

---

12. Click the **Next** button.
13. When the **Installation Successful** window appears, click **Finish**.
14. After successfully installing the printer, the **Add Printer Wizard** may ask you if you want your system to use this printer as the default printer. Select the desired option (**Yes** or **No**), then go to Section 5.3.3, on page 23 to setup the printer.

## 5.3.2 Installing an M Series Printer on a Non-US English Windows NT4.0 Client

1. Logon the workstation as a local administrator.
2. If there are no other PostScript printers installed on the workstation, install a dummy, local, PostScript printer from your operating system install media:
  - a. Start the **Add Printer Wizard** by clicking on **Start, Settings, Printers** and **Add Printers**.
  - b. When the **Add Printer Wizard** prompts for **My Computer** or **Network Printer Server**, select **My Computer** and click **Next**.
  - c. Follow the prompts. When **Add Printer Wizard** prompts you for the **Manufacturer** and **Model** of the printer, choose **HP** and **HP LaserJet III Si PostScript**. This copies the non-U.S. English, printer driver software to your system.
3. To begin the installation of the M Series printer, restart the **Add Printer Wizard** by clicking on **Start, Settings, Printers** and **Add Printers**.
4. When the **Add Printer Wizard** prompts for **My Computer** or **Network Printer Server**, select **Network Printer Server** and click **Next**.
5. When the **Connect to Printer** dialog box appears, enter the Windows NT network path for the Splash M Series Color Server's configured print queue. If the hostname is **splashm** and the print queue name is **splash\_print**, the Windows NT network name is **\\splashm\splash\_print**.
6. Click **OK**. If the **Connect to Printer Warning** box appears, click **OK**.
7. When the **Driver Setup** window appears, click on **Have Disk**.



### Note

*Always click on **Have Disk** regardless of whether or not this is the first time you are adding a printer to your workstation.*

8. Insert the Splash CD-ROM that shipped with the color server in your workstation CD-ROM drive.
9. When the **Install from Disk** window appears, click **Browse**.
10. When the **Locate File** dialog box appears, browse the Splash CD-ROM and locate the **Nt4\English** folder.
11. In the **Nt4\English** folder, open the **splashm.inf** file.

12. When the **Add Printer Wizard** prompts for the printer model, select one of the following options, according to the model of the Splash M Series Color Server:

- **Splash M210 v1.0**
- **Splash M310 v1.0**
- **Splash M410 v1.0**

13. Click the **Next** button.

14. When the **Add Printer Wizard** prompts you to keep or replace the printer driver software, select **KEEP THE EXISTING DRIVER**, and click **OK**.

***If you choose Replace the existing driver, the U.S.English print driver will be installed, overwriting the non-U.S. English print driver.***

15. When the **Installation Successful** window appears, click **Finish**.

16. After successfully installing the printer, the **Add Printer Wizard** may ask if you want your system to use this printer as the default printer. Select the desired option (**Yes** or **No**), then go to Section 5.3.3, on page 23 to setup the printer.

### 5.3.3 Printer Setup

1. Select the printer by right clicking on its icon in the Printers folder. Choose **Properties** from the pull-down menu. The **Printer Properties** dialog box appears.

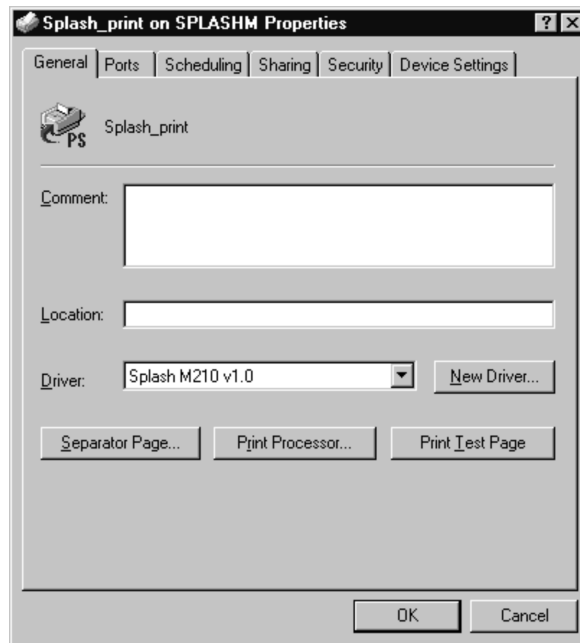


Figure 14: Printer Properties Box

# Getting Started Guide

2. Switch to the **Scheduling** tab of the **Printer Properties** dialog box (Figure 15).

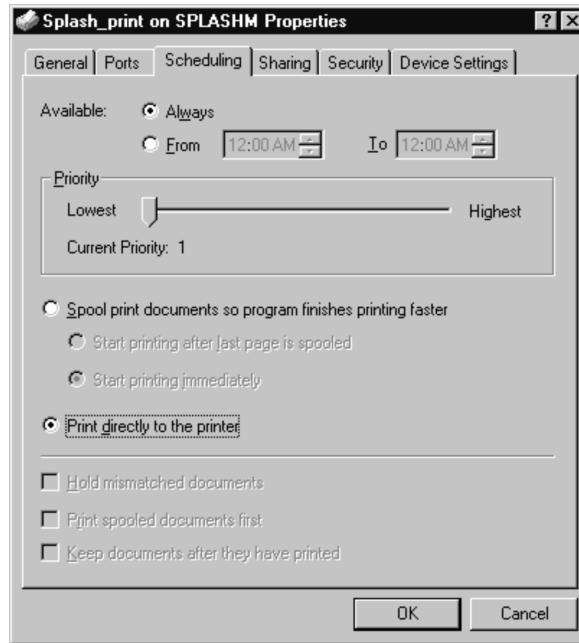


Figure 15: Scheduling Tab

3. Select **Print directly to printer** and then click **OK**.
4. Switch to the **Device Settings** tab (Figure 16).



Figure 16: Device Settings Tab



5. To configure the installable options, scroll down to **Installable Options** folder and double click on the icon:
  - a. Select the **Xerox 5750/Acolor 620 Support** option from the list. This option enables/disables **12in x 18in, Postcard, and Tray 4** support. This option also disables/enables **Group in Sorter** and **Group in Sorter Reverse**, which are not supported by the Xerox 5750/Acolor 620 copier. **Xerox 5750/Acolor 620 Support** is enabled (**Yes**) by default.

If your color server is connected to a Xerox 5750/Acolor 620 copier, use the default (**Yes**).

If your color server is connected to a Xerox 5790/Acolor 935 or Xerox 5799/Acolor 936 copier, set the **Change Setting** to **No**.
  - b. Select the **Optional Sorter** option from the list. This option enables/disables the Splash M Series sorter features. This option is disabled (**Not Installed**) by default.

If the copier connected to your color server has a sorter attached, set the **Change Setting** to **Installed**.

If the copier does not have a sorter, use the default (**Not Installed**).
  - c. Click **OK**.

The installation is now complete and you can start sending print jobs to the color server. The printer is installed with a set of default options. You can use these defaults, specify new defaults (which will apply to all your print jobs), or select new options on a job-by-job basis. For more information, refer to the *Splash M Series User's Manual*.

## 5.4 Installing the Viewer and Printer Support on Macintosh Clients

The Splash CD-ROM that shipped with the color server contains a folder named **Macviewer**. This folder has all the utilities and files you need to install and setup the Viewer and printer files on the Macintosh.



**Note** *If you are installing the M Series printer file on a non-U.S. English Macintosh workstation, you must use the installation procedure in Section 5.4.2.*

### 5.4.1 Installing an M Series Printer on a US English Macintosh Client

1. Reboot the workstation with all but the basic extensions off.
2. Insert the Splash CD-ROM that shipped with the color server into the workstation's CD-ROM drive.
3. Open the **Macviewer** folder on the CD-ROM.
4. Open the **English** language folder inside **Macviewer**.
5. Double click on the **Splash M Series Installer** and follow the installation prompts to install the **Viewer** and printer files.
6. If the workstation has **PageMaker**, when the **Splash M Series Installer** completes:
  - a. Locate the **PageMaker PPD** file in the **Splash M Series v1.0** folder.
  - b. Copy the **PageMaker PPD** file to the **System Folder:Extensions:Printer Descriptions** folder on the Macintosh system drive.
7. Reboot the Macintosh with the desired extensions on.
8. Go to Section 5.4.3, on page 27 to setup the printer.

### 5.4.2 Installing an M Series Printer on a Non-US English Macintosh Client

1. Reboot the workstation with all but the basic extensions off.
2. Insert the Splash CD-ROM that shipped with the color server into the workstation's CD-ROM drive.
3. Open the **Macviewer** folder on the CD-ROM.
4. Open the **English** language folder inside **Macviewer**.
5. Double click on the **Splash M Series Installer** and follow the installation prompts to install the **Viewer** and printer files.
6. When the **Splash M Series Installer** completes, locate and open the English folder named **System Folder:Extensions:Printer Descriptions** on the Macintosh system drive.
7. Locate and open the corresponding printer description folder whose name is in the language installed on the Macintosh.
8. Drag the **Splash M Series v1.0** print file from the English **System Folder:Extensions:Printer Descriptions** folder to the corresponding printer description folder in your language.

9. If the workstation has PageMaker, locate the **PageMaker PPD** file in the **Splash M Series v1.0** folder. Copy the **PageMaker PPD** file to the printer description folder in your language on the Macintosh system drive.
10. Reboot the Macintosh with the desired extensions on.
11. Go to Section 5.4.3, on page 27 to setup the printer.

### 5.4.3 Printer Setup

To set up the printer on your workstation:

1. Make sure that **AppleTalk** is **Active**.
2. From the **Apple Menu**, select **Chooser**. The **Chooser Control Panel**, shown in Figure 17, appears.

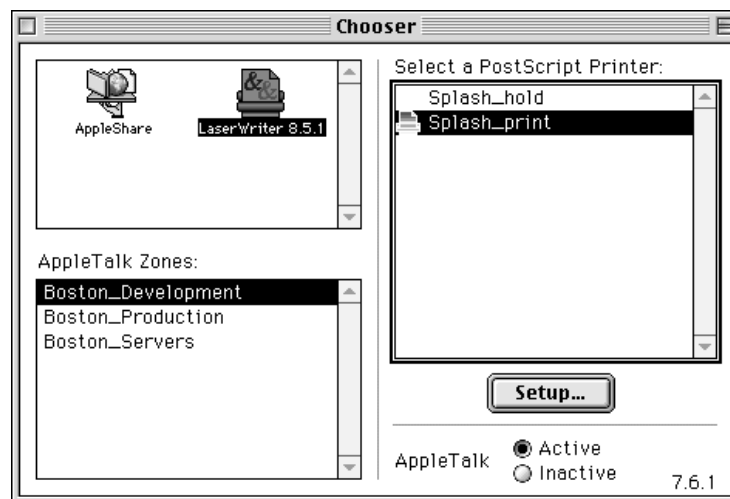


Figure 17: Sample Chooser Control Panel

3. Select **LaserWriter 8.4.3** (or above) and a **Zone** (if configured). Click **Setup**.
4. When the printer list appears, click on the **Splash M Series** printer name and then click on **Create** or **Setup**, depending on whether **Desktop Printing** is installed.

*If this is the first time you have set up a Splash M Series Color Server on this workstation, the system completes the set up procedure without further intervention from you and an icon appears next to the printer name. When an icon appears next to the printer name, go to Step 7*

*If this is not the first time you have set up a Splash M Series Color Server on this workstation, the **Current Printer Description File** dialog box, shown in Figure 18, appears.*

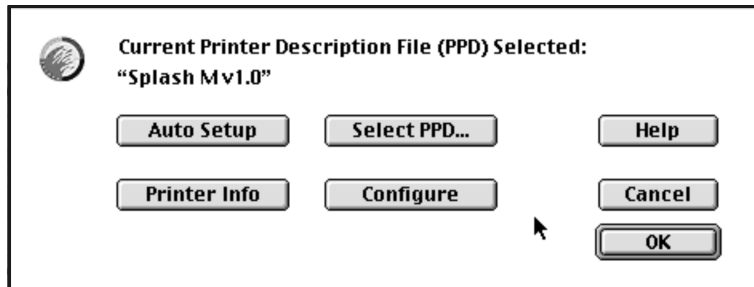


Figure 18: Current Printer Description File Dialog Box

5. Click on **Auto Setup**. The **Current Printer Description File** dialog box (Figure 18) re-appears when the workstation has finished setting up the printer.
6. Click on **Configure**. The **Installable Options** dialog box, shown in Figure 19, appears.

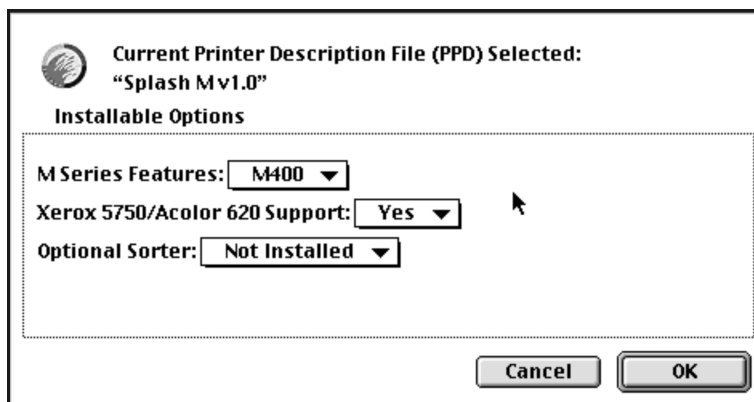


Figure 19: Installable Options Dialog Box

7. Follow these steps to configure all of the **Installable options**:
  - a. Select the **M Series Features** option from the **Installable Option** list. Choose either **M200**, **M300**, or **M400**, depending on the model of the color server you specified in Step 4.
  - b. Select the **Xerox 5750/Acolor 620 Support** option from the **Installable options** list. This option enables/disables **12in x 18in, Postcard, and Tray 4** support. This option also disables/enables **Group in Sorter** and **Group in Sorter Reverse**, which are not supported by the Xerox 5750/Acolor 620. **Xerox 5750/Acolor 620 Support** is enabled (**Yes**) by default.

If your color server is connected to a Xerox 5750/Acolor 620 copier, use the default (**Yes**).

If your color server is connected to a Xerox 5790/Acolor 935 or Xerox 5799/Acolor 936 copier, set this option to **No**.

- c. Select the **Optional Sorter** option from the **Installable options** list. This option enables/disables the Splash M Series sorter features. This option is disabled (**Not Installed**) by default.

If the copier connected to your color server has a sorter attached, set this option

to **Installed**.

If the copier does not have a sorter, use the default (**Not Installed**).

d. Click **OK**.

8. On the **Current Printer Description File** dialog box, click **OK**.

9. Close the **Chooser Control Panel**.

The installation is now complete and you can start sending print jobs to the color server. The printer is installed with a set of default options. You can use these defaults, specify new defaults (which will apply to all your print jobs), or select new options on a job-by-job basis. For more information, refer to the *Splash M Series User's Manual*.

If this is the first workstation you have set up for the Splash M Series Color Server, go to *Setting the Administrator Password for the Server* on page 44 to set the password for the server.

## 5.5 Installing the Viewer and Printer Support on Windows 95/98

The Splash CD-ROM that shipped with the color server contains a folder named **Winviewer**. This folder has all the utilities and files you need to install and setup the Viewer and printer description files on the workstation.

The Microsoft Client for Microsoft networks and TCP/IP protocols must be installed on the workstation in order to run the Viewer. These protocols also support printing to the Splash M Series.



**Note** *If you are installing the Viewer and printer files on a non-U.S. English Windows 95/98 workstation, you may optionally use the installation procedure in Section 5.5.2. This procedure contains extra steps, but it will minimize the amount of US English that appears in the Printer Properties dialog box on the workstation.*

### 5.5.1 Installing an M Series Printer on a US English Windows 95/98 Client

1. Insert the Splash CD-ROM that shipped with the color server into your client workstation's CD-ROM drive.
2. Open the **WINVIEWER** folder on the CD-ROM.
3. Double-click on **Setup**. When **Setup** starts, a dialog box appears that prompts you to select a language.
4. Select the English language from the pull-down list and click **OK**. The **Install Shield Wizard** starts.
5. Install the **Viewer** by following the **Install Shield** prompts.
6. When the **Viewer** installation is complete, remove the CD-ROM from the workstation's CD-ROM drive.
7. Start the **Add Printer Wizard** by clicking on **Start, Settings, Printers** and **Add Printers**.
8. When the **Add Printer Wizard** prompts for a **Local Printer** or **Network Printer**, specify **Network Printer** and click **Next**.
9. When the **Add Printer Wizard** prompts for a network path or queue name, enter the Windows network name of the Splash M Series Color Server's configured print queue. If the hostname is **splashm** and the print queue name is **splash\_print**, the Windows network name is **\\splashm\splash\_print**.
10. When the **Add Printer Wizard** prompts for the manufacturer and model,
  - a. Click on **Have Disk**, then **Browse**.
  - b. Go to **Program Files\Splash\M Series Viewer v1.0** folder and select either the **win95** or **win98** folder.
  - c. Choose the **OEMSETUP.INF** file and click **OK**.
11. When the **Add Printer Wizard** displays the printer model, **Splash M v1.0**, click **Next**.
12. When the **Add Printer Wizard** prompts for a printer name, type the desired local logical printer name and append **"\_hold"** if you are adding a hold queue or **"\_print"** if you are adding a print queue. The reason for adding **"\_hold"** or **"\_print"** is because both queues are represented on the network as identical printer icons (Figure 20).

Adding “\_print” or “\_hold” to the name identifies the queue type associated with the icon.

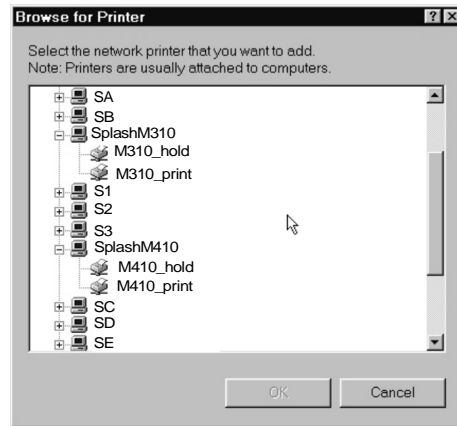


Figure 20: Color Server Queues

13. When the **Add Printer Wizard** asks if you want to print the test page, click **Yes**. After the test page prints, click **Yes** again (even if the test page prints incorrectly).
14. Go to Section 5.5.3, on page 33 to setup the printer.

## 5.5.2 Installing an M Series Printer on a Non-US English Windows 95/98 Client

1. If there are no other PostScript printers installed on the workstation, install a dummy, local, PostScript printer from your operating system install media:
  - a. Start the **Add Printer Wizard** by clicking on **Start, Settings, Printers and Add Printers**.
  - b. When the **Add Printer Wizard** prompts for a **Local Printer** or **Network Printer**, select **Local Printer** and click **Next**.
  - c. Follow the prompts. When **Add Printer Wizard** prompts you for the **Manufacturer** and **Model** of the printer, choose **HP** and **HP LaserJet III Si PostScript**. This copies the non-U.S. English, printer driver software to your system.
2. Insert the Splash CD-ROM that shipped with the color server into your client workstation's CD-ROM drive.
3. Open the **WINVIEWER** folder on the CD-ROM.
4. Double-click on **Setup**. When **Setup** starts, a dialog box appears that prompts you to select a language.
5. Select the English language from the pull-down list and click **OK**. The **Install Shield Wizard** starts.
6. Install the **Viewer** by following the **Install Shield** prompts.
7. When the **Viewer** installation is complete, remove the CD-ROM from the workstation's CD-ROM drive.

# Getting Started Guide

---

8. Restart the **Add Printer Wizard** by clicking on **Start, Settings, Printers and Add Printers**.
9. When the **Add Printer Wizard** prompts for a **Local Printer** or **Network Printer**, specify **Network Printer** and click **Next**.
10. When the **Add Printer Wizard** prompts for a network path or queue name, enter the Windows network name of the Splash M Series Color Server's configured print queue. If the hostname is **splashm** and the print queue name is **splash\_print**, the Windows network name is **\\splashm\splash\_print**.
11. When the **Add Printer Wizard** prompts for the manufacturer and model,
  - a. Click on **Have Disk**, then **Browse**.
  - b. Go to **Program Files\Splash\M Series Viewer v1.0** folder and select either the **win95** or **win98** folder.
  - c. Choose the **OEMSETUP.INF** file and click **OK**.
12. When the **Add Printer Wizard** displays the printer model, **Splash M v1.0**, click **Next**.
13. If the **Add Printer Wizard** prompts you to keep or replace the printer driver software, select **KEEP THE EXISTING DRIVER** and click **Next**.

***If you choose Replace the existing driver, the U.S.English print driver will be installed, overwriting the non-U.S. English print driver.***

14. When the **Add Printer Wizard** prompts for a printer name, type the desired local logical printer name and append “\_hold” if you are adding a hold queue or “\_print” if you are adding a print queue. The reason for adding “\_hold” or “\_print” is because both queues are represented on the network as identical printer icons (Figure 21).

Adding “\_print” or “\_hold” to the name identifies the queue type associated with the icon.

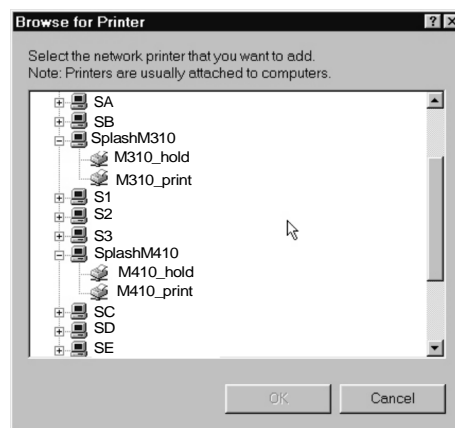


Figure 21: Color Server Queues

15. When the **Add Printer Wizard** asks if you want to print the test page, click **Yes**. After the test page prints, click **Yes** again (even if the test page prints incorrectly).



16. If the **Add Printer Wizard** asks you if you want to keep any files that are in the language of your workstation, keep the files.
17. Go to Section 5.5.3, on page 33 to setup the printer.

### 5.5.3 Printer Setup

After adding the color server, configure it by following these steps:

1. Open **Printer Properties**. The **Printer Properties** dialog box, shown in Figure 22, appears.

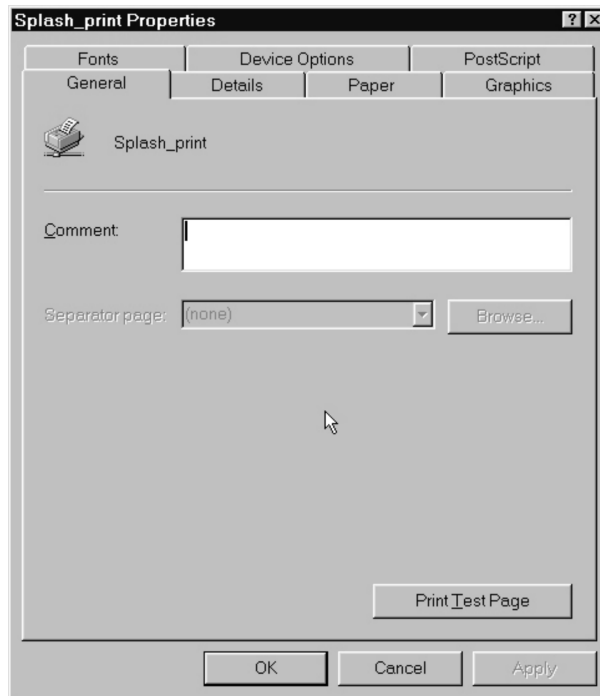


Figure 22: Printer Properties Dialog Box

# Getting Started Guide

2. Click on **Details**. The **Details** tab, shown in Figure 23, appears.

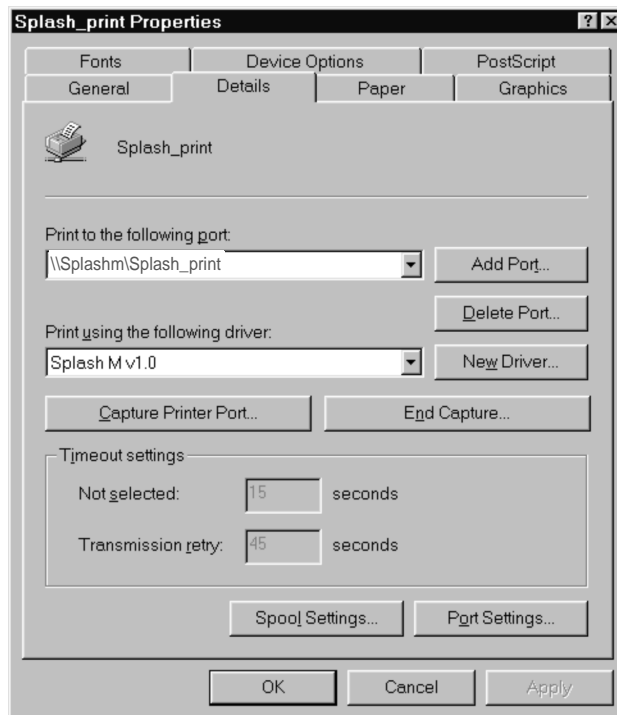


Figure 23: Details Tab

3. Click on the **Spool Settings** button. The **Spool Settings** dialog box, shown in Figure 24, appears.

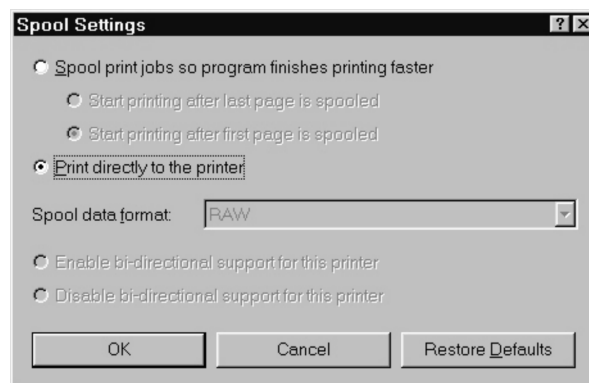


Figure 24: Spool Settings Dialog Box

4. Click on **Print directly to printer** then click **OK**. The **Spool Setting** dialog box closes, but the **Details** tab (Figure 23) is still displayed.
5. On the **Details** tab, switch to the **PostScript** tab by clicking on **PostScript**. The **PostScript** tab, shown in Figure 25, appears.

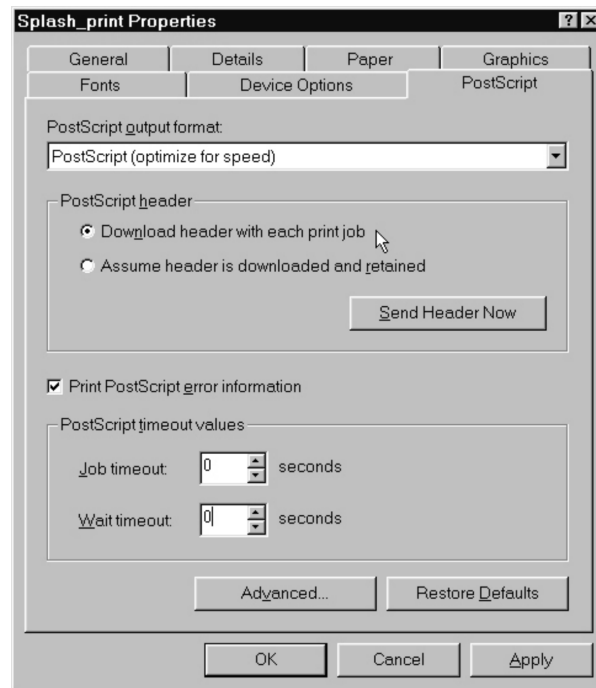


Figure 25: PostScript Tab

6. On the **PostScript** tab, click **Advanced**. The **Advanced PostScript** dialog box, shown in Figure 26, appears.

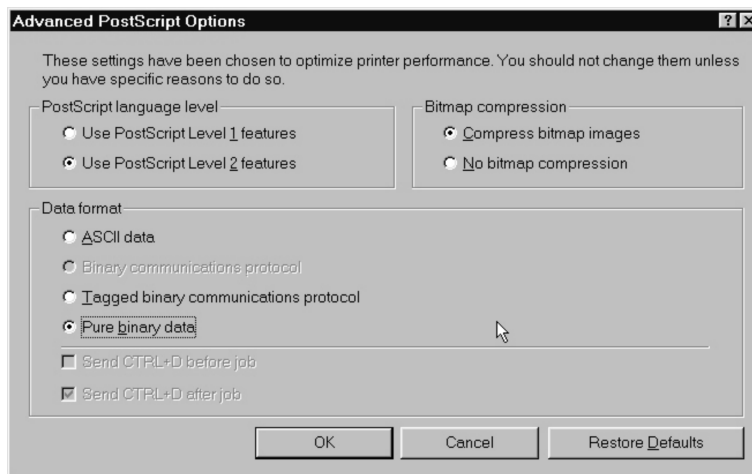


Figure 26: Advanced PostScript Dialog Box

7. Set the following options:
  - *Use PostScript Level 2 features*
  - *Pure binary data*
  - *Compress bitmap images*

# Getting Started Guide

8. Click **OK**. The **Advanced PostScript** dialog box closes, but the **PostScript** tab is still displayed.
9. Switch from the **PostScript** tab to the **Device Options** tab by clicking on **Device Options**. The tab shown in Figure 27 appears.



Figure 27: Device Options Tab

10. Scroll down and select **SpotMatch**.
  - a. If the M Series server is a model M210 or M310, set the **SpotMatch** option to **disabled**. This option must be set to **disabled** because the M210 and M310 do not support the SpotMatch feature.
  - b. If the M Series server is a model M410, set SpotMatch to the desired option (**disabled** or **enabled**).
11. Configure all of the **Installable options**:
  - a. Select the **M Series Features** option from the **Installable Option** list. Choose either **M200**, **M300**, or **M400**, depending on the model of the color server.
  - b. Select the **Xerox 5750/Acolor 620 Support** option from the **Installable options** list. This option enables/disables **12in x 18in**, **Postcard**, and **Tray 4** support. This option also disables/enables **Group in Sorter** and **Group in Sorter Reverse**, which are not supported by the Xerox 5750/Acolor 620 copier. **Xerox 5750/Acolor 620 Support** is enabled (**Yes**) by default.

If your color server is connected to a Xerox 5750/Acolor 620 copier, use the default (**Yes**).

If your color server is connected to a Xerox 5790/Acolor 935 or Xerox 5799/Acolor 936 copier, use the **Change Setting** pull-down list to set this option to **No**.

- c. Select the **Optional Sorter** option from the **Installable options** list. This option enables/disables the Splash M Series sorter features. This option is disabled (**Not Installed**) by default.

If the copier connected to your color server has a sorter attached, use the **Change Setting** pull-down list to set this option to **Installed**.

If the copier does not have a sorter, use the default (**Not Installed**.)

- d. Click **OK**.

The installation is now complete and you can start sending print jobs to the color server. The printer is installed with a set of default options. You can use these defaults, specify new defaults (which will apply to all your print jobs), or select new options on a job-by-job basis. For more information, refer to the *Splash M Series User's Manual*.

If this is the first workstation you have set up for the Splash M Series Color Server, go to *Setting the Administrator Password for the Server* on page 44 to set the password for the server.

# Getting Started Guide

---

## 5.6 Installing the Viewer and Printer Support on Windows NT4.0

The Splash CD-ROM that shipped with the color server contains a folder named **Winviewer**. This folder has all the utilities and files you need to install and setup the Viewer and printer description files on the workstation.

The Microsoft Client for Microsoft networks and TCP/IP protocols must be installed on the workstation in order to run the Viewer. These protocols also support printing to the Splash M Series.



*If you are installing the Viewer and printer files on a non-US English Windows NT4.0 workstation, you may optionally use the installation procedure in Section 5.6.3. This procedure contains extra steps, but it will minimize the amount of US English that appears in the Printer Properties dialog box on the workstation.*

### 5.6.1 Installing an M Series Printer on a US English Windows NT4.0 Client

1. Logon to the workstation as a local administrator.
2. Insert the Splash CD-ROM that shipped with the color server into your client workstation's CD-ROM drive.
3. Open the **WINVIEWER** folder on the CD-ROM.
4. Double-click on **Setup**. When **Setup** starts, a dialog box appears that prompts you to select a language.
5. Select the English language from the pull-down list and click **OK**. The **Install Shield Wizard** starts.
6. Install the **Viewer** by following the **Install Shield** prompts.
7. When the Viewer installation is complete, remove the CD-ROM from the workstation CD-ROM drive.
8. Start the **Add Printer Wizard** by clicking on **Start, Settings, Printers** and **Add Printers**.
9. When the **Add Printer Wizard** prompts for **My Computer** or **Network Printer Server**, select **Network Printer Server** and click **Next**.
10. When the **Connect to Printer** dialog box appears, enter the Windows NT network path for the Splash M Series Color Server's configured print queue. If the hostname is **splashm** and the print queue name is **splash\_print**, the Windows NT network name is **\\splashm\splash\_print**.
11. Click **OK**. If the **Connect to Printer Warning** box appears, click **OK**.
12. When the **Driver Setup** window appears, click on **Have Disk**.



*Always click on **Have Disk** regardless of whether or not this is the first time you are adding a printer to your workstation.*

13. When the **Install from Disk** window appears, click **Browse**.
14. The **Locate File** dialog box appears. Select the **Winnt4** folder (the default pathname is **c:\Program Files\Splash\M Series Viewer v1.0\Winnt4**).
15. Open the **Winnt4** folder, select **Splashm.inf** and click on **Open**.

16. When the **Confirmation** window appears, click **OK**.
17. When the **Add Printer Wizard** prompts for the printer model, select **SplashM v1.0**, then click **Next**.
18. When the **Installation Successful** window appears, click **Finish**.
19. After successfully installing the printer, the **Add Printer Wizard** may ask if you want your system to use this printer as the default printer. Select the desired option (**Yes** or **No**), then go to Section 5.6.3, on page 40 to setup the printer.

## 5.6.2 Installing an M Series Printer on a Non-US English Windows NT4.0 Client

1. Logon to the workstation as a local administrator.
2. If there are no other PostScript printers installed on the workstation, install a dummy, local, PostScript printer from your operating system install media:
  - a. Start the **Add Printer Wizard** by clicking on **Start, Settings, Printers and Add Printers**.
  - b. When the **Add Printer Wizard** prompts for **My Computer** or **Network Printer Server**, select **My Computer** and click **Next**.
  - c. Follow the prompts. When **Add Printer Wizard** prompts you for the **Manufacturer** and **Model** of the printer, choose **HP** and **HP LaserJet III Si PostScript**. This copies the non-U.S. English, printer driver software to your system.
3. Insert the Splash CD-ROM that shipped with the color server into your client workstation's CD-ROM drive.
4. Open the **WINVIEWER** folder on the CD-ROM.
5. Double-click on **Setup**. When **Setup** starts, a dialog box appears that prompts you to select a language.
6. Select the English language from the pull-down list and click **OK**. The **Install Shield Wizard** starts.
7. Install the **Viewer** by following the **Install Shield** prompts.
8. When the Viewer installation is complete, remove the CD-ROM from the workstation CD-ROM drive.
9. Start the **Add Printer Wizard** by clicking on **Start, Settings, Printers and Add Printers**.
10. When the **Add Printer Wizard** prompts for **My Computer** or **Network Printer Server**, select **Network Printer Server** and click **Next**.
11. When the **Connect to Printer** dialog box appears, enter the Windows NT network path for the Splash M Series Color Server's configured print queue. If the hostname is **splashm** and the print queue name is **splash\_print**, the Windows NT network name is **\\splashm\splash\_print**.
12. Click **OK**. If the **Connect to Printer Warning** box appears, click **OK**.
13. When the **Driver Setup** window appears, click on **Have Disk**.

# Getting Started Guide

---



Always click on **Have Disk** regardless of whether or not this is the first time you are adding a printer to your workstation.

14. When the **Install from Disk** window appears, click **Browse**.
15. The **Locate File** dialog box appears. Select the **Winnt4** folder (the default pathname is **c:\Program Files\Splash\M Series Viewer v1.0\Winnt4**).
16. Open the **Winnt4** folder, select **Splashm.inf** and click on **Open**.
17. When the **Confirmation** window appears, click **OK**.
18. When the **Add Printer Wizard** prompts for the printer model, select **SplashM v1.0**, then click **Next**.
19. When the **Add Printer Wizard** prompts you to keep or replace the printer driver software, select **KEEP THE EXISTING DRIVER**, and click **OK**.  
  
*If you choose Replace the existing driver, the U.S.English print driver will be installed, overwriting the non-U.S. English print driver.*
20. When the **Installation Successful** window appears, click **Finish**.
21. After successfully installing the printer, the **Add Printer Wizard** asks if you want your system to use this printer as the default printer. Select the desired option (**Yes** or **No**), then go to Section 5.6.3, on page 40 to setup the printer.

## 5.6.3 Printer Setup

After adding the color server, configure it as follows:

1. Open the **Printers** folder and right clicking on the M Series printer icon. In the pull-down menu that appears, choose **Properties**. The **Printer Properties** dialog box appears.
2. Switch to the **Scheduling** tab (Figure 28).



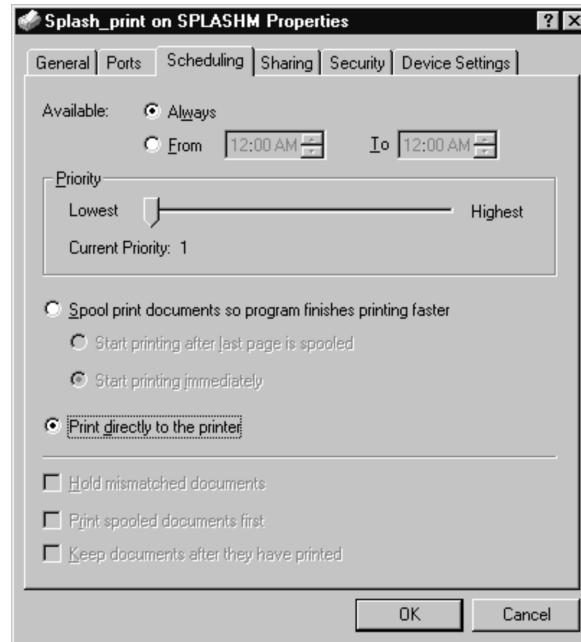


Figure 28: Scheduling Tab

3. Select **Print directly to printer** and then click **OK**.
4. Switch to the **Device Settings** tab (Figure 29).

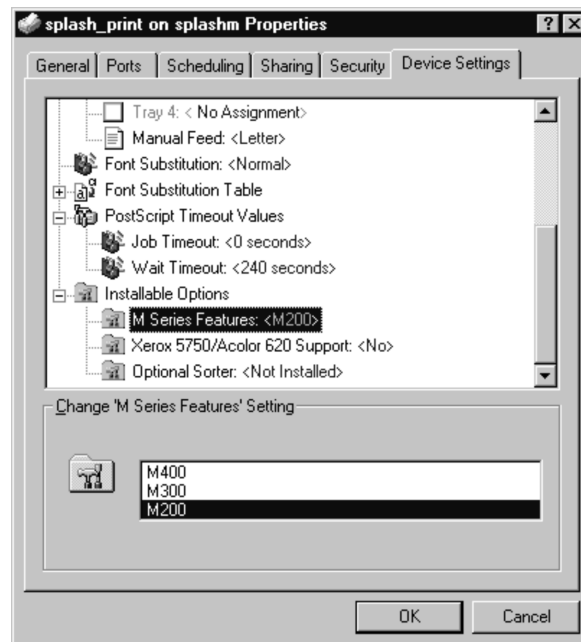


Figure 29: Device Settings Tab

# Getting Started Guide

---

5. Configure the installable options by completing these steps:
  - a. Scroll down to **Installable Options** folder and double click on the folder icon.
  - b. Select the **M Series Features** option from the **Installable Option** list. Choose either **M200**, **M300**, or **M400**, depending on the model of the color server.
  - c. Select the **Xerox 5750/Acolor 620 Support** option. This option enables/disables **12in x 18in, Postcard**, and **Tray 4** support. This option also disables/enables **Group in Sorter** and **Group in Sorter Reverse**, which are not supported by the Xerox 5750/Acolor 620 copier. **Xerox 5750/Acolor 620 Support** is enabled (**Yes**) by default.

If your color server is connected to a Xerox 5750/Acolor 620 copier, use the default (**Yes**).

If your color server is connected to a Xerox 5790/Acolor 935 or Xerox 5799/Acolor 936 copier, set the **Change Setting** to **No**.
  - d. Select the **Optional Sorter** option from the list. This option enables/disables the Splash M Series sorter features. This option is disabled (**Not Installed**) by default.

If the copier connected to your color server has a sorter attached, set the **Change Setting** to **Installed**.

If the copier does not have a sorter, use the default (**Not Installed**).
  - e. Click **OK**.
  - f. Close the **Printer Properties** dialog box.
6. Open the **Printers** folder and right clicking on the M Series printer icon again. In the pull-down menu that appears, choose **Document Defaults**. The Document Default Properties window appears.
7. Switch to the Advanced tab (Figure 30).

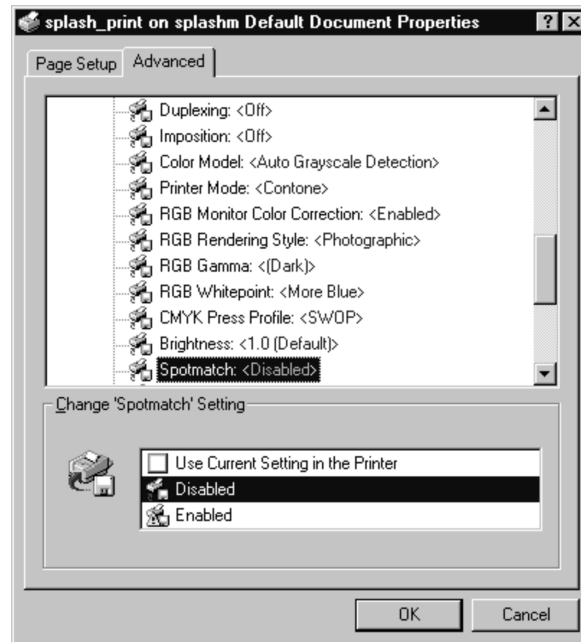


Figure 30: Advanced Tab for Document Default Properties

8. Scroll down and double click on the **Document Options** folder, then scroll down and double click on the **Printer Features** folder.
9. Scroll down and select **SpotMatch**.
  - a. If the M Series server is a model M210 or M310, set the **SpotMatch** option to **disabled**. This option must be set to **disabled** because the M210 and M310 do not support the SpotMatch feature.
  - b. If the M Series server is a model M410, set SpotMatch to the desired option (**disabled** or **enabled**).

The installation is now complete and you can start sending print jobs to the color server. The color server PPD file ships with a set of default values. You can use these defaults, specify new defaults (which will apply to all your print jobs), or select new values on a job-by-job basis. For more information, refer to the *Splash M Series User's Manual*.

If this is the first workstation you have set up for the Splash M Series Color Server, go to *Setting the Administrator Password for the Server* on page 44 to set the password for the server.

# Getting Started Guide

---

## 6.0 SETTING THE ADMINISTRATOR PASSWORD FOR THE SERVER

If this is the first time you are installing the **Viewer** on a workstation (Windows or Macintosh) on your network, complete the procedure in this section to change the Administrator password on the Splash color server. You only need to change the password once during the installation process. However, if you have multiple Splash M Series Color Servers on your network, you must perform this procedure once for each color server.

There are three classes of user modes (or privileges) for the Splash M Series Color Server: ordinary user, operator, administrator. The color server system allows or restricts user access to specific color server functions depending on the users' mode:

**Administrator**— Unlimited access to all **Viewer** features and functions, including the ability to define the features and functions available to ordinary users and operators. Access to Administrator privileges requires a password.

**Operator**—Restricted access to Administrator functions and other functions as defined by the Administrator. Access to Operator privileges requires a password.

**Ordinary User**—Restricted access to Administrator and Operator functions. Access to Ordinary User privileges does not require a password.

The color server can be configured with two passwords: one password for Administrator access and one password for Operator access. If your site requires multiple Administrators and Operators to manage the color server, these users must share passwords.

Since the Splash M Series software ships without passwords it is important to configure an Administrator password after installing the **Viewer** on the first workstation. Otherwise, all users will have unlimited access to the color server.

To change the Administrator password:

1. Start the **Viewer** by clicking on **Start** and clicking on **M Series Viewer** under the **Program** menu. The **Viewer** window, shown in Figure 30, appears.

**Pull-down Administration Menu**

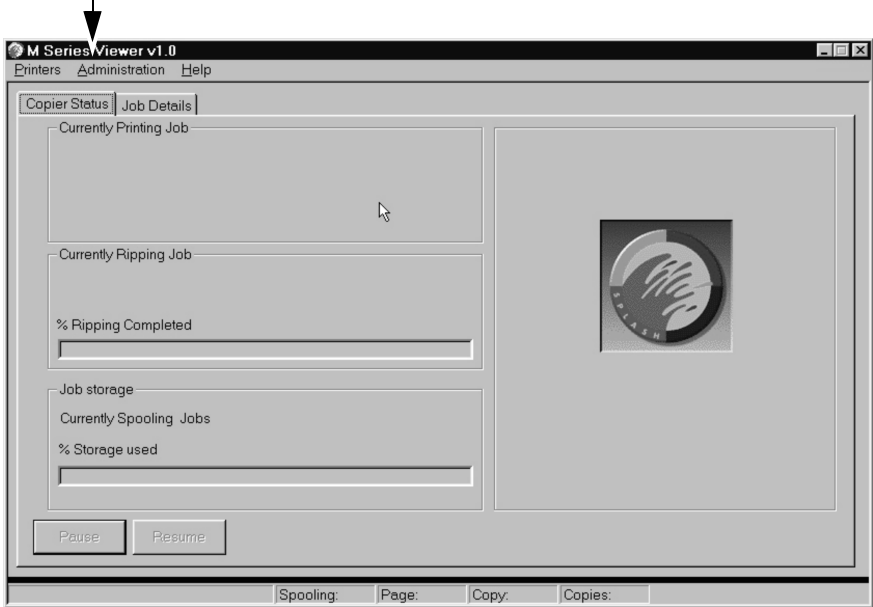


Figure 30: Sample Viewer Window

- 2. Pull down the **Administration** menu, and select **Log on** as shown in Figure 31.

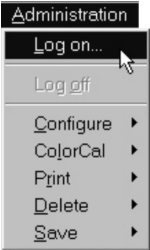


Figure 31: Pull-down Logon Menu

The **Logon** dialog box, shown in Figure 32, appears. The default value for **User ID** is **Administrator**.

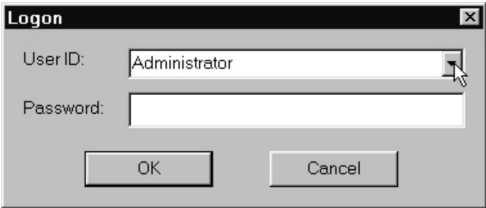


Figure 32: Logon Dialog Box

- 3. If the default does not appear in **User ID**, pull down the **User ID** list and select **Administrator**.

# Getting Started Guide

---

4. Do not specify a password in the password field. Click **OK**. You are now in Administrator mode.
5. Pull down the **Administration** menu, and select **Configure**, then **Password**, as shown in Figure 33.

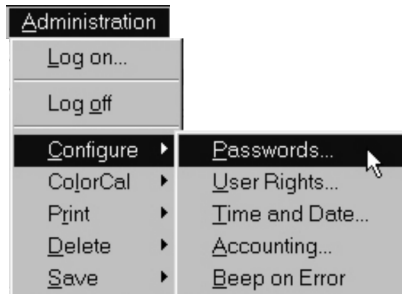


Figure 33: Configure Password

The **Change Password** dialog box, shown in Figure 34, appears.



Figure 34: Change Password Dialog Box

6. Since the old password is blank, leave this field empty. Enter the new password in the **New Password** field.
7. Re-enter the new password in the **Verify** field and click **OK**.

If the passwords entered in the **New Password** and **Verify** fields do not match, the error message “The new passwords don’t match” appears. You probably made a typing mistake. Repeat steps 6 and 7.

If the passwords do match, the message “Password accepted” appears.

8. Click **OK** and close the **Viewer**.