

Printing to Splash From a Macintosh

July 4, 1997

Splash Technology
Sunnyvale, California USA

Trademarks and Copyright

Splash and the Splash logo are trademarks of Splash Technology Inc. Apple, Macintosh, LaserWriter, and AppleTalk are registered trademarks of Apple Computer, Inc. MajestiK, Regal, and DocuColor are trademarks of Xerox, Incorporated. Acolor is a trademark of Fuji Xerox, Inc. Novell NetWare is a trademark of Novell, Inc. Adobe, the Adobe logo, Adobe Illustrator, PostScript, Adobe Type Manager, Adobe PageMaker, and Adobe Photoshop are trademarks of Adobe Systems Incorporated, which may be registered in certain jurisdictions. QuarkXPress is a registered trademark of Quark, Inc. All other brand or product names are trademarks of their respective holders.

Copyright © 1997 Splash Technology, Inc.

PN: 0014117-0102 Last revised: July 4, 1997. Your rights of ownership are subject to the limitations and restrictions imposed by the copyright laws as outlined below.

PROPRIETARY RIGHTS NOTICE. The digitally encoded machine readable outline data for producing the typefaces provided as part of your laser printer is copyrighted © 1981 Linotype-Hell AG. Copyright © 1993 Adobe System Incorporated. All Rights Reserved. This data is the property of Linotype-Hell AG and Adobe Systems Incorporated and may not be reproduced, used, displayed, modified, disclosed or transferred without the express written approval of Linotype-Hell AG and Adobe Systems Incorporated.

It is against the law to copy, reproduce, or transmit including, without limitation, electronic transmission over any network any part of the manual or program except as permitted by the Copyright Act of the United States, Title 17, United States Code. Under the law, copying includes translation into another language or format. However, you are permitted by law to write the contents of the program into the machine memory of your computer so that the program may be executed. You are also permitted by law to make working copies of the program, solely for your own use, subject to the following restrictions: (1) Working copies must be treated in the same way as the original copy; (2) If you ever sell, lend, or give away the original copy of the program, all working copies must also be sold, lent, or given to the same person, or destroyed; (3) No copy (original or working) may be used while any other copy (original or working) is in use except within the terms of this license. The copyright notice that is on the original copy of the program must accompany any working copies of the program.

The above is not an inclusive statement of the restrictions imposed on you under the Copyright Act. For a complete statement of the restrictions imposed on you under the copyright laws of the United States of America, see Title 17, United States Code.

Table of Contents

Introduction	7
System Requirements	7
Chapter 1 — Installing the Macintosh Client Software	9
Splash Printer Description Files	11
For QuarkXPress	11
Chapter 2 — Printing to Splash	13
Before You Print	13
Connecting to the Splash Server	14
Which Driver Should I Use?	15
Connecting to Splash with the Splash Driver	16
Connecting to Splash with the LaserWriter 8 Driver	17
Printing to Splash with the Splash Driver	18
Choosing Page Setup Options	18
Choosing Print Options with the Splash Printer Driver	22
Printing to Splash With the LaserWriter 8 Driver	24
Choosing LaserWriter 8 Page Setup Options	25
Choosing LaserWriter 8 Print Options	27
Canceling a Print Job from the LaserWriter 8.4.x Driver	34
Using the Splash Print Options	35
Setting Splash Color Options	35
Color Model	35
Printer Mode	35
RGB Monitor Color Correction	35
CMYK Press Color Correction	37
Composite Spot Colors	37

Setting Splash Tray Options	38
Tray Selection	38
Bypass Tray Options	38
Paper Handling Options	40
Providing User Information	41
Document Owner and Password	41
Document Comment	42
Setting Splash Extras Options	42
Spool Options	42
Separations	42
Original Type	44
Document Mode	45
Printing Style	45
Print Control Strip	45
Print Progressives	45
Sharpness	46
Auto Grayscale Detection	46
Save as TIFF	47
Creating a PostScript File	48
PostScript File Printing Notes	48
Splash Color Correction	49
Splash Color Correction Notes	50
Optional RGB Photographic Rendering	
Style Color Correction	51
Splash ICC (ColorSync) Profiles	52
Adobe Photoshop Color Separation Tables for Splash	52
Chapter 3 — Checking the Splash Print Queue	53
Using the Splash Status DA	53
Macintosh Status DA Notes	55
Using the Splash Web Queue Manager	55
Managing Print Jobs in the Queue	57
Editing Print Jobs in the Queue	59
Printing Graphics Files	59
Splash Web Queue Manager Notes	61

Chapter 4 — Application Notes	63
General Application Notes	63
Bitmapped Fonts	63
Printing DCS Files	63
Printing Documents That Use Patterned Fills	64
Printing Gradient Fills	64
Printing A4 and Letter Bleed on Oversize Stock	64
Notes for Specific Applications	64
Adobe Illustrator Notes	64
Printing Separations From Adobe Illustrator	65
Adobe Photoshop Notes	65
Print Dialog Box Notes	66
Save as TIFF and Adobe Photoshop 3.0	66
FreeHand Notes	66
FreeHand 4.0	67
FreeHand 3.1 Notes	67
Adobe PageMaker Notes	68
Splash Print Options Not Available for Early Versions of PageMaker	68
Index	69

Introduction

The Splash Macintosh client software allows a Macintosh computer to send print jobs to the Splash Server, which processes your print jobs and sends them to the printer/copier. This on-line manual describes how to install and use the Splash Macintosh client software with your applications.

System Requirements

The Splash Macintosh Client software requires the following:

- A Macintosh II and above, or Power Macintosh computer
- System 7.1 (or later)
- Networking hardware that provides a network connection between the client Macintosh and the Splash Server

Chapter 1

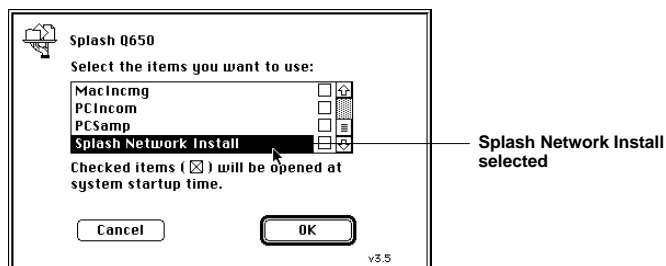
Installing the Macintosh Client Software

This chapter describes how to install Splash client software on a Macintosh. Install the Splash client software on each network client that will be used for printing to Splash.

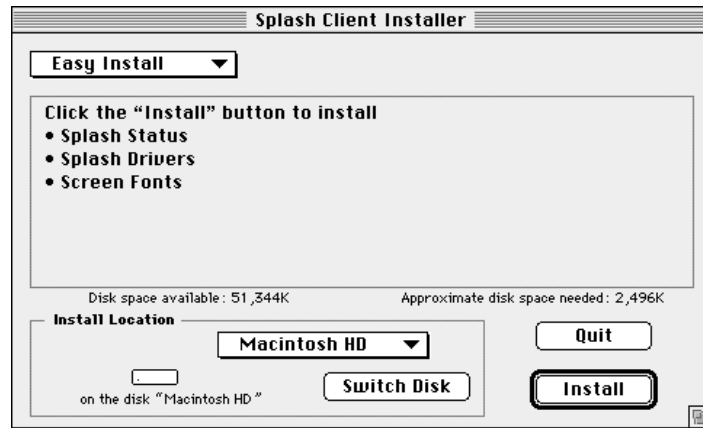
IMPORTANT: *The Splash PCI Series server is incompatible with client software from other versions of Splash. Be sure to install the Splash PCI Series client software on all Macintosh workstations that will print to the Splash server.*

To install the Macintosh Client software:

1. Go to one of the client Macintosh computers that is connected to the network that will be used for printing with the Splash Server.
2. Select the Chooser from the Apple menu.
3. In the lower-right corner of the Chooser window, click the Active button next to AppleTalk. If AppleTalk is not already active, a dialog box appears. Click OK.
4. In the Chooser window, select the Splash Server AppleTalk Zone (if your network has zones), then click the AppleShare icon. From the list of file servers, select the Splash Server.
5. Click OK. The File Server Connect dialog appears.
6. Click Guest, then click OK. The Splash Server folders appear.

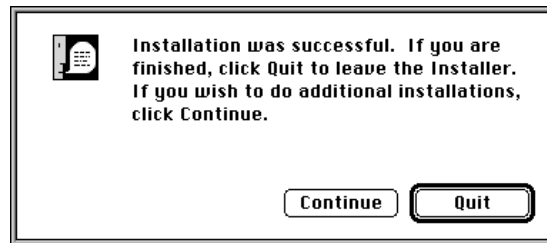


7. Select the Splash Network Install folder, and then click OK.
The Splash Network Install folder appears on the desktop.
8. Double-click the appropriate Client Installer icon for your Splash Server model:
 - If you will print to a Splash PCI Series v5.0 Server, double-click the Splash PCI Client Installer icon.
 - If you will print to a Splash PCI-E v5.0 Server, double-click the Splash PCI-E Client Installer icon.
9. The Easy Install dialog box appears.



10. Click Install. All Splash Client software is installed over the network from the Splash Server CPU.

When installation is complete, a message appears.



11. Click Quit to exit the Splash Installer. It is not necessary to restart your Macintosh. You can begin to print to Splash from your applications right away.

Repeat this install procedure for each client Macintosh connected to your network.

Splash Printer Description Files

For QuarkXPress

The Splash Installer places the following files for printing to Splash from QuarkXPress on your computer's hard disk:

- **Splash Regal v5.0.pdf** is for a Xerox Regal, Acolor 930 series, Xerox MajestiK or Acolor 630 series printer/copier
- **Splash 5799 v5.0.pdf** is for a Xerox DocuColor 5799 copier
- **Splash 5750 v5.0.pdf** is for a Fuji Xerox Acolor 620 series or DocuColor 5750 printer/copier

The Splash Installer places the file Splash DocuColor.PDF in a folder named "Quark PDFs" located in the Splash Folder on your computer's hard disk. This custom file is for printing to Splash from QuarkXPress. If your documents are clipped when you print to Splash from QuarkXPress, move the Splash PDF file to the QuarkXPress application folder (for version 3.1 or 3.2) or the PDF folder inside the application folder (for version 3.3). Select the Splash PDF in the QuarkXPress Print dialog box before you print to Splash.

Chapter 2

Printing to Splash

Before You Print

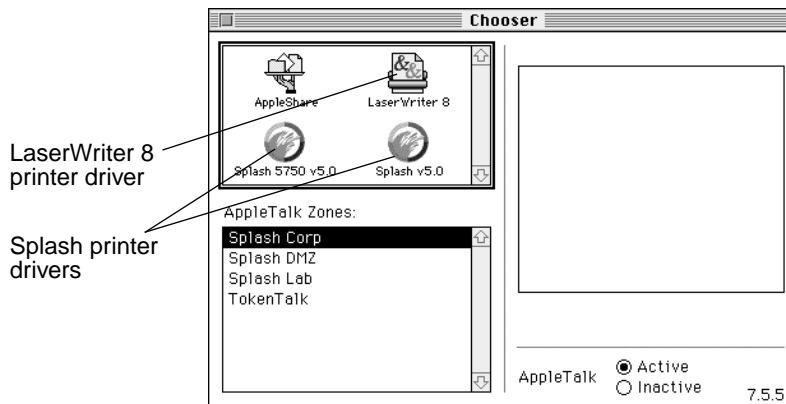
When you print, the Splash printer driver converts commands from your application into PostScript code. The Splash Server application converts the PostScript code into a pixel description of your page, and sends it to the printer/copier. If your file is complex, the PostScript conversion takes more time. For better printing performance, follow these guidelines before you print:

- Be sure to install legal copies of all the screen and printer fonts you plan to use at both the Client and Server machines. This ensures that fonts are downloaded to the printer only when necessary and prevents font substitution.
- If you want to place a portion of a large graphic in another file, copy the part you want to use into a new file, then import this new file. When you import an entire graphic, then crop it, the Server application must calculate the entire graphic, then eliminate the part you cropped, before sending the graphic to the printer.
- Delete small details in a large image before you scale the image to a smaller size. Even when these details become too small for the eye to decipher, they require the same amount of processing time as they do at full size.
- Delete unnecessary elements in a drawing; do not cover them with a white rectangle.
- When you print multiple copies, use the long-edge feed capability (such as Letter LEF or A4 LEF) to take advantage of the copier's higher throughput rate.
- Select the "Auto Grayscale Detection" checkbox (the default setting) when you print documents that have some all-grayscale or black and white pages. These pages will print up to six-times faster. (See page 46 for information about this Splash print option.)

- When you print all-grayscale or black and white documents, select Grayscale for the Splash Color Model print feature to save an additional half-second per page over the default setting (Full Color). Be sure the print option, “Auto Grayscale Detection” is checked.
- For color documents, deselect the “Auto Grayscale Detection” checkbox to disable this print option. Color documents print faster when this option is disabled.
- If you have the optional Adobe Color Central Lite software installed, select the name for your Splash Server in the Chooser (originally set to Splash Server) instead of with the Splash Color Central queues.

Connecting to the Splash Server

Before you can print, you must connect your Macintosh to the Splash Server with the MacOS Chooser. You can print to a Splash Server using either the custom Splash PostScript Level 1 printer driver—based on the Apple LaserWriter 7.1 driver—or a LaserWriter 8 PostScript Level 2 printer driver, provided with your MacOS System software. (As this manual is being written, the current version is LaserWriter 8.4.1.)



Splash provides printer description files (PPDs) for applications that use the LaserWriter 8 driver. The Splash printer description files let you select Splash print features when you print to Splash from Level 2 PostScript applications.

Do not use earlier versions of the LaserWriter driver (pre-LaserWriter 8). Earlier versions of the LaserWriter driver will work with Splash, but do not include the correct paper size information and do not allow you to use special Splash printing features like color correction.

Which Driver Should I Use?

Both the custom Splash driver and the LaserWriter 8 driver will print your color documents to Splash successfully. In some circumstances the Splash driver provides faster printing. Use the following notes to help you determine which driver to use when you print to Splash:

- Some applications, such as Adobe PageMaker 5.0 and later, require the LaserWriter 8.x (PostScript Level 2) printer driver to print your documents. Some applications require a PostScript Level 2 driver to apply RGB color correction.

Note: You can apply Splash RGB color correction to your documents with either the custom Splash printer driver or with the LaserWriter 8 printer driver.

- When you print from most applications, the LaserWriter 8 driver is approximately 1.5 times slower than the custom Splash driver for sending print jobs to the Splash Server. This is because LaserWriter 8 is a 2-pass driver that spools locally on the hard disk, even if background printing is turned off. (Exception: Adobe PageMaker 5.0 and later does not spool locally.)

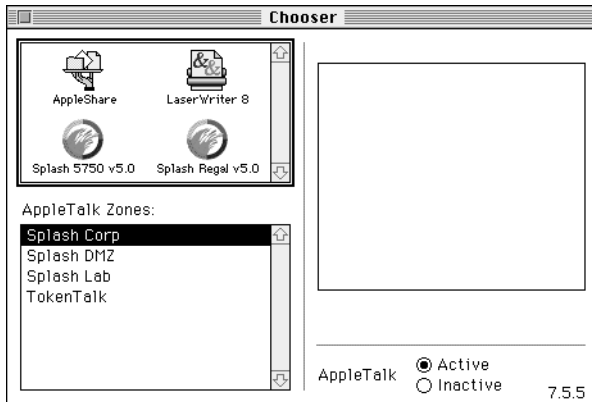
LaserWriter 8.4.1 offers both foreground and background printing. When Foreground is selected, the printer driver does not spool the file being printed. This can speed up print processing time for some applications.

- The LaserWriter 8 driver includes features that are not available with the custom Splash driver, such as the Desktop Printer feature. Refer to the documentation provided with the LaserWriter 8 driver for information about the latest features of the LaserWriter 8 driver.
- The Document Owner and Document Comment fields are available only when you use the custom Splash printer driver to print documents to Splash. See page 41 for information about these Splash print options.

Connecting to Splash with the Splash Driver

To connect to the Splash Server:

1. In the Apple menu, open the Chooser.



2. Select the "Active" button next to AppleTalk in the lower right corner of the Chooser window. If AppleTalk is not already active, a dialog box appears. Click OK.
3. Choose the appropriate driver icon for your model of printer/copier in the upper-left window.
 - Choose the **Splash Regal v5.0** driver for a MajestiK, Regal, Acolor 630 series, or Acolor 930 series printer/copier.
 - Choose **Splash 5750 v5.0** driver for an Acolor 620 series or DocuColor 5750 printer/copier.
 - Choose **Splash 5799 v5.0** driver for a DocuColor 5799 printer/copier.
4. If your network has zones, select the correct AppleTalk Zone for the Splash Server, then select the Splash Server name in the list of printers that appears on the right.

Choose the Splash Server name, even if it is the only name in the list. (If you do not know the network name assigned to the Splash Server, or where it is located on the network, ask your network administrator.)

5. Turn Background Printing on or off. (This enables or disables the Apple PrintMonitor.)

Note: For fastest end-to-end printing, leave background printing off.

Background Printing: On Off

If network traffic is heavy, you may want to turn Background Printing on.

When Background Printing is on, PrintMonitor spools your file on your local Macintosh. In the background (while you do other work), the printer driver sends this file over the network to the Splash Server.

Note: Background printing increases processing time, and your Macintosh operates more slowly due to this background activity.

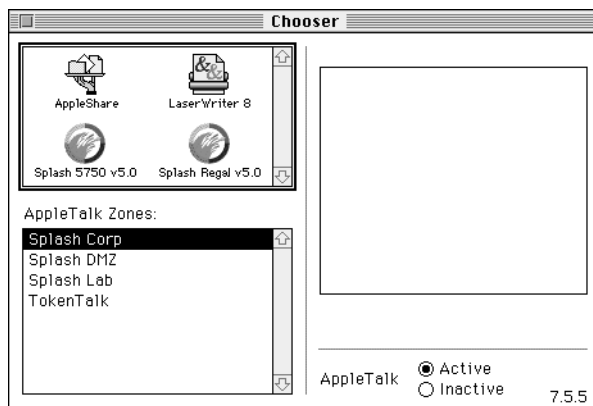
6. Close the Chooser window.

The connection to the Splash Server is active. Your Macintosh will continue to print to the Splash Server until you open the Chooser again and select a different printer.

Connecting to Splash with the LaserWriter 8 Driver

To connect to the Splash Server with the LaserWriter 8 driver:

1. Select Chooser from the Apple menu. The Chooser window appears.



2. Select the LaserWriter 8 driver icon in the upper-left window in the Chooser, select the correct AppleTalk Zone for the Splash Server (if your network has zones), then select the Splash Server name in the list of printers that appears on the right.

3. Click Setup. The LaserWriter 8 driver automatically selects the correct Splash printer description file for your model of printer/copier.

The connection to the Splash Server with LaserWriter 8 is complete. Your Macintosh will continue to print to the Splash Server until you open the Chooser again and select a different printer.

Printing to Splash with the Splash Driver

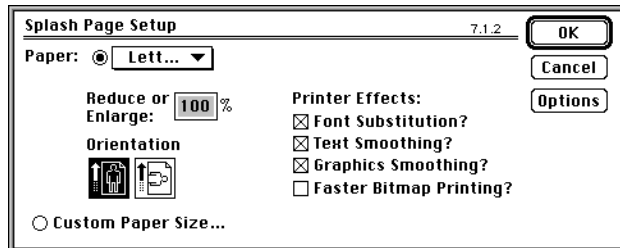
This section describes how to choose Page Setup and Print options when you print using the custom Splash printer driver. For information on how to choose print commands with the LaserWriter 8 driver, see page 24.

Choosing Page Setup Options

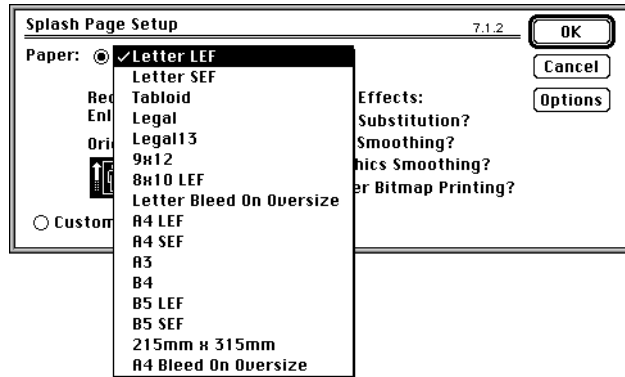
Always choose new Page Setup options after you use the Chooser to select a new printer. Even if you do not want to change any settings, open the Page Setup dialog box, then click OK, to ensure that your file is formatted correctly for the new printer.

To choose Page Setup options:

1. Open the file you want to print.
2. From the File menu within the application, choose Page Setup. The Splash Page Setup dialog box appears:



- From the Paper pop-up menu, choose the paper size you want to use for your document. If you plan to print from the Bypass tray, choose the paper or transparency size installed in this tray.



The page sizes 12x18, A6, 4x6, B5SEF, and B5LEF print only to the bypass tray.

Be sure a cassette or the Bypass tray contains the paper size you specify, or your job will be transferred to the Error queue at the Splash Server.

When a paper size has an LEF-suffix (Letter LEF, for example), the paper is loaded with the long edge of the sheet feeding from the tray. When a paper size has an SEF suffix (such as Letter SEF), the paper is loaded with the short edge of the sheet feeding from the tray.

The Splash Server prints all supported paper sizes and orientations at 400dpi in both directions.

Each time you open a file, select the Page Setup option in the File menu and open the Paper pop-up menu to select a paper size.

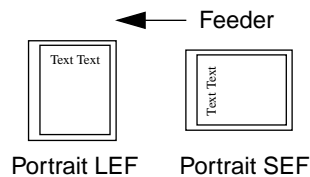
- Click the portrait or landscape icon to choose an orientation.



The paper and orientation selections work together to give you four different choices of orientation:

- Portrait with an SEF paper size and Portrait with an LEF paper size have the same orientation on the page, but the horizontal and vertical margins are reversed.

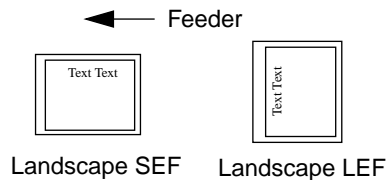
If you print to a MajestiK, Regal, DocuColor 5799, or Acolor 630 series or 930 series printer/copier, the edge that feeds into the printer has a margin of 9 mm; the other edges have a 4 mm margin. If you print to an Acolor 620 or DocuColor 5750 printer/copier, the edge that feeds into the printer has a margin of 6 mm; the other edges have a 4 mm margin.



Note: Paper sizes that do not have an “SEF” or “LEF” suffix are handled as short edge feed (SEF) paper by the printer/copier.

- Landscape with an SEF paper size and Landscape with an LEF paper size have the same orientation on the page, but the horizontal and vertical margins are reversed.

If you print to a MajestiK, Regal, DocuColor 5799, or Acolor 630 series or 930 series printer/copier, the edge that feeds into the printer has a margin of 9 mm; the other edges have a 4 mm margin. If you print to an Acolor 620 or DocuColor 5750 printer/copier, the edge that feeds into the printer has a margin of 6 mm; the other edges have a 4 mm margin.



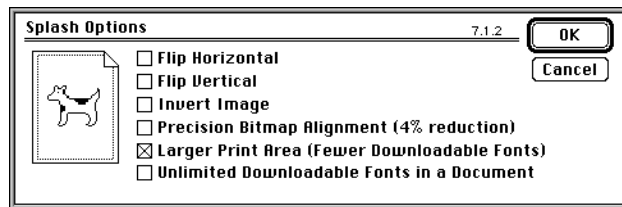
5. Choose an Enlarge/Reduce value. To increase the size of the image, enter a value greater than 100%; to decrease the size of the image, enter a value less than 100%. The default Enlarge/Reduce value is 100%, which prints your images at full size. You can enlarge your image up to 400%, or reduce it to as small as 25% of your original image.

6. Printer Effects improve the look of your printed images and can make printing faster.

As a rule, Printer Effects should remain enabled:

- Font Substitution replaces the New York font with Times, Geneva with Helvetica, and Monaco with Courier, to produce higher-quality text. (Font substitution occurs only with applications that support this feature.)
- Text Smoothing and Graphics Smoothing reduce the jagged edges found in bitmapped text and graphics.
- Faster Bitmap Printing increases the data handling speed of the printer driver in applications that use one bit data.

7. Click the Options button to choose additional printer options:

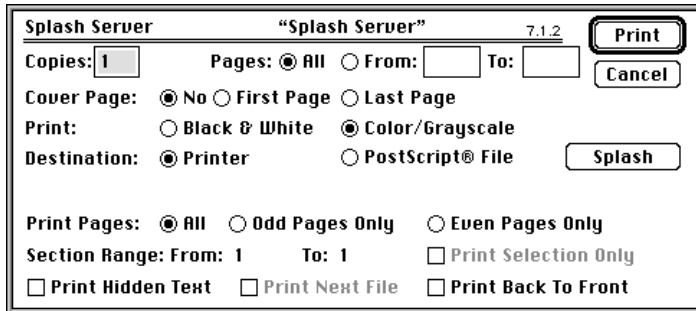


- Flip Horizontal reverses the image from left to right.
 - Flip Vertical prints the image upside down.
 - Invert Image prints the image in colors that are the inverse (opposite) of the actual colors.
 - Precision Bitmap Alignment reduces the size of the print by 4%. It will not print bitmapped images with an integer dot increase as it does with a lower resolution, 300 dpi printer engine. Therefore, in general, it should not be checked.
 - Larger Print Area is a LaserWriter option that has no effect on Splash PostScript printing.
 - Unlimited Downloadable Fonts also is a LaserWriter option that has no effect on Splash PostScript printing.
8. Click OK to return to the Page Setup dialog box.
 9. Click OK in the Page Setup dialog box to save your settings.

Choosing Print Options with the Splash Printer Driver

To print a file to the printer/copier,

1. From the File menu in your application, choose Print. Print dialog box appears:



Your application may have more options or fewer options in the Print dialog box. See the user manual included with the application for specific information.

2. By default, Splash prints one copy of every page in your file. To print more than one copy, type the number in the Copies box. To print a specific range of pages in the document, type the starting and ending page numbers in the From and To boxes, respectively.

Note: Some applications let you print page one of your document from one paper tray, and all remaining pages from another paper tray. This feature does not work when you print to the Splash Server. All pages will print from the paper tray you selected for page one.

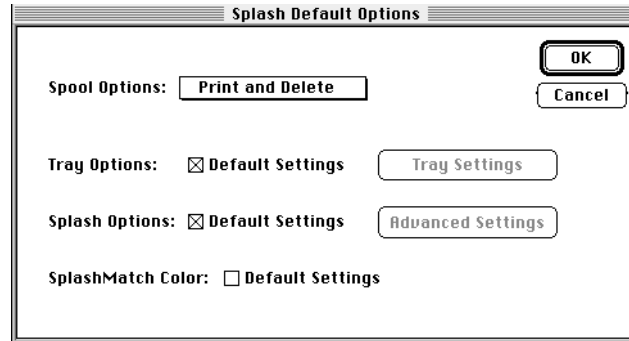
3. The Cover Page option generates a page that lists your name, the application from which you are printing, the name of your file, the date and time of printing, the printer name, and the number of pages you are printing (not including the cover page). Use the default, None, when you do not want to print a cover page. Select First Page to print a cover page before your file prints, or select Last Page to print a cover page after your file prints.

Note: If "Print Cover Page" is selected in the Splash Server application, and you select the Cover Page option in your application, Splash prints two cover pages for the job.

4. Choose **Printer** as your print destination to send your document to the printer/copier, or choose PostScript File to save the output as a PostScript file.

5. Click the **Splash** button to select the Splash print features available for your printer/copier.

The Splash Default Options appear.



6. Select a **Spool Option** if you want to save the PostScript spool file that is created when you print to Splash.

If you save the spool file you can reprint the job from the Splash Server application. The spool file options are:

- **Print and Delete** automatically deletes the spool file after printing the job.
- **Print and Save** saves the spool file after printing. The job is transferred to the Hold queue with a message "*PostScript spool file saved as requested.*"
- **Send and Hold** sends the spool file directly to the Hold queue after is received by the Splash Server.

The **Tray Options** and **Splash Options** have default settings that apply to most print jobs. If your document prints on a standard paper size and does not require special processing such as color correction, select the two **Default Settings** checkboxes.

To set additional print options for your print job, deselect the Tray Options or Splash Options checkboxes, then click **Tray Settings** or **Advanced Settings** to view and select more Splash print features. (See "Using the Splash Print Options" on page 35 for information about these print options.)

In general, you should select **Default Settings** for **SplashMatch Color**. To turn off color correction, deselect Default Settings. With SplashMatch Color set to default settings, the following settings take effect: RGB Color Correction is On, Rendering Style is Graphics, Gamma and Whitepoint are Normal, Composite Spot Color correction is Off, Color Model is Color (4 pass), Printer Mode is Contone, and CMYK correction is Off. (See “Setting Splash Color Options” on page 35 for information about these SplashMatch color correction settings.)

7. When you have finished selecting Splash print options, click OK to print your document to Splash.

Printing to Splash With the LaserWriter 8 Driver

At the time this manual was prepared the current version of the Apple’s LaserWriter 8 printer driver was 8.4.1. Earlier versions of the LaserWriter 8 software are different in appearance from the software described in this manual. Also, some LaserWriter 8 page setup and print options described in this section are not available with earlier versions of the printer driver. Contact Apple to obtain the latest version of the LaserWriter 8 printer driver.

Note: The following Splash print options are not available when you print to Splash with the LaserWriter 8 printer driver:

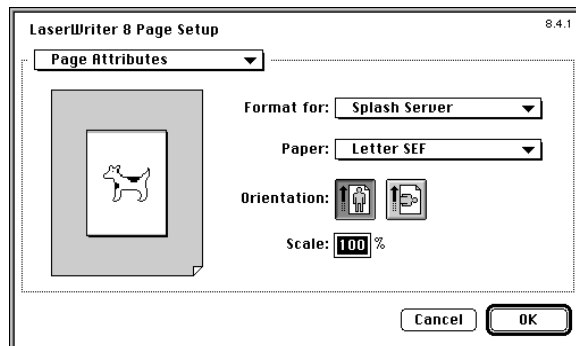
- Document Owner field
- Document Comment field

See page 41 for information about these Splash print options.

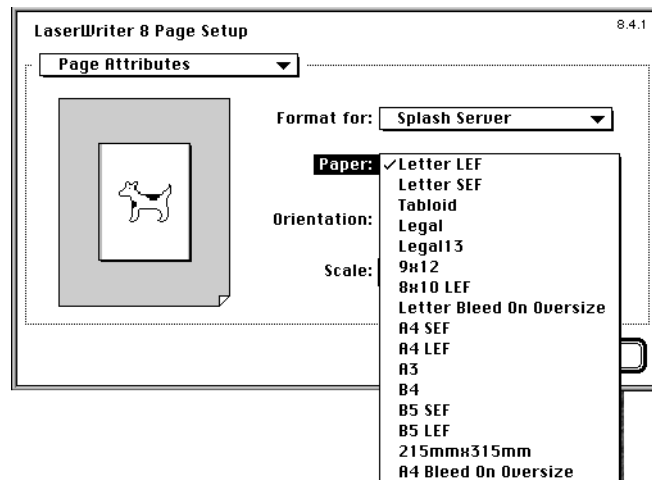
Choosing LaserWriter 8 Page Setup Options

To choose Page Setup options when using the LaserWriter 8 printer driver:

1. Open the file you want to print.
2. From the File menu within the application, choose Page Setup.
The LaserWriter 8 Page Setup dialog box appears:



3. Be sure that the Splash Server appears in the **Format for** menu.
4. In the **Paper** menu, choose the size of the paper or transparency film you want to use:



The page sizes 12x18, A6, 4x6, B5SEF, and B5LEF print only to the bypass tray.

When a paper size has an LEF-suffix (Letter LEF, for example), the paper is loaded with the long edge of the sheet feeding from the tray. When a paper size has an SEF suffix (such as Letter SEF), the paper is loaded with the short edge of the sheet feeding from the tray.

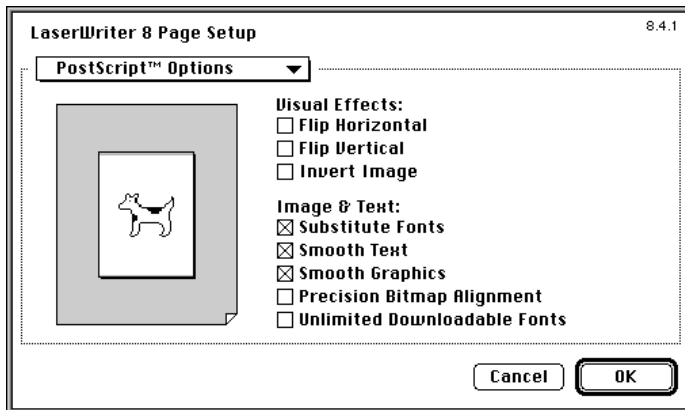
The Splash Servers print all supported paper sizes and orientations at 400dpi in both directions.

5. Click the portrait or landscape icon to choose an **Orientation**.



The paper and orientation selections work together to give you four different choices of orientation. See page 19 for more information.

6. To enlarge or reduce the image, enter a value in the **Scale** text box. To increase the size of the image, type a value greater than 100%; to decrease the size of the image, enter a value less than 100%. The default value is 100%, which prints your images at full size. You can enlarge your image up to 400%, or reduce it to as small as 25% of your original image.
7. Choose **PostScript Options** in the menu in the upper-left corner of the LaserWriter 8 Page Setup dialog box to view more page setup options.



- Flip Horizontal reverses the image from left to right.
- Flip Vertical prints the image upside down.
- Invert Image prints the image in colors that are the inverse (opposite) of the actual colors.
- Substitute Fonts replaces the New York font with Times, Geneva with Helvetica, and Monaco with Courier, to produce higher-quality text.
- Smooth Text and Smooth Graphics reduce the jagged edges found in bitmapped text and graphics.
- Precision Bitmap Alignment reduces the size of the print by 4%. It will not print bitmapped images with an integer dot increase as will a 300 dpi printer engine. In general, this option should not be checked.
- Unlimited Downloadable Fonts is a LaserWriter option that has no effect on Splash PostScript printing.

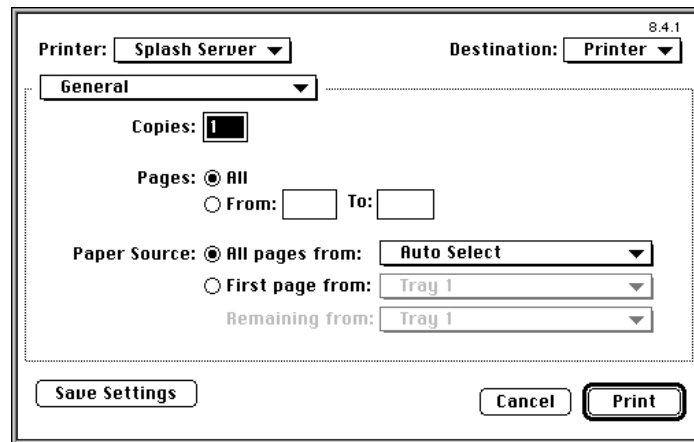
To see page size information about the document, click on the page image on the left. Page dimensions appear in inches. Click again to see information in centimeters.

8. Click OK in the Page Setup dialog box to save your settings.

Choosing LaserWriter 8 Print Options

To print a file to the printer/copier using the LaserWriter 8 driver,

1. From the File menu in your application, choose Print. The LaserWriter 8 print dialog box appears:



Your applications may have additional print options or may have fewer. See the user manual for your application for information about these options.

2. Select **Printer** as your print destination to send your document to the Splash printer/copier.

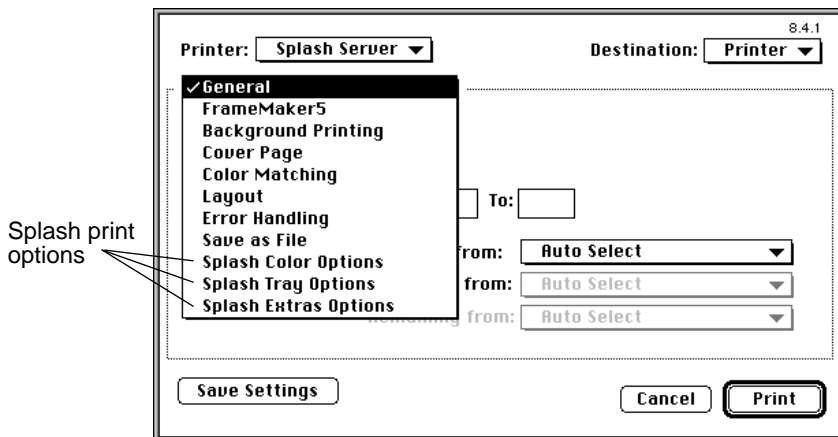
Choose **PostScript File** as an output destination if you want to save your document as a PostScript file.

3. By default, Splash prints one copy of every page in your file. To print more than one copy, type the number in the **Copies** box. To print a specific range of pages in the document, type the starting and ending page numbers in the **From** and **To** boxes, respectively.
4. Select **All pages from** under **Paper Source** to select the paper tray to use for the document, and to enable automatic tray selection. To print to the copier's bypass tray, select Bypass Tray in the Paper Source menu and select the appropriate settings in the **Splash Tray Options** screen.

Note: The First page from and Remaining from menus are LaserWriter options that have no effect on Splash PostScript printing. All pages will print from the paper tray you selected for page one.

Note: For all applications except Adobe PageMaker 6, the “First from” and “Remaining from” menus contain two “AutoSelect” options. Select either option to activate the AutoSelect tray feature.

A menu in the upper-left corner of the dialog box allows you to view and select additional print options, including the Splash print options.



Your application may add other print options to the menu. Refer to your application's manual for information about its print options.

5. Choose **Background Printing** to set options that control print spooling.

The screenshot shows the 'Background Printing' tab of the LaserWriter 8.4.1 print dialog. At the top, 'Printer:' is set to 'Splash Server' and 'Destination:' is set to 'Printer'. Below this, the 'Background Printing' tab is selected. The 'Print in:' section has 'Foreground (no spool file)' selected with a radio button, and 'Background' is unselected. The 'Print Time:' section has 'Normal' selected with a radio button, and 'Urgent', 'Print at: 6:40 PM 11/26/96', and 'Put Document on Hold' are unselected. At the bottom, there are three buttons: 'Save Settings', 'Cancel', and 'Print'.

LaserWriter 8.4.1 offers both foreground and background printing. When Foreground is selected, the printer driver does not spool the file being printed. This can speed up print processing time for some applications.

Note: Some applications do not operate properly with Foreground selected. If you experience problems during printing, set this to Background printing.

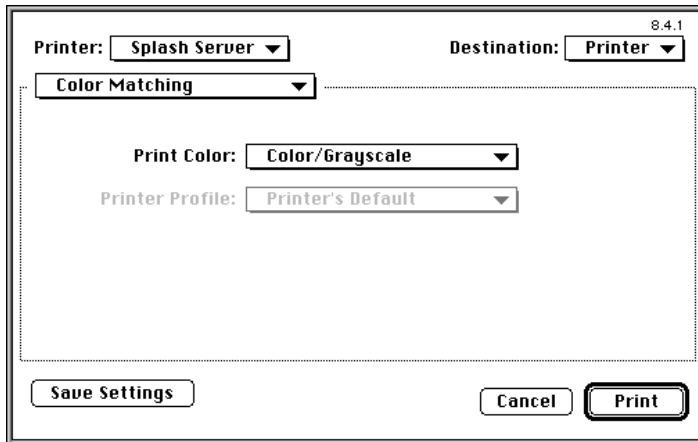
6. Choose **Cover Page** to view LaserWriter 8 cover page options.

The screenshot shows the 'Cover Page' tab of the LaserWriter 8.4.1 print dialog. At the top, 'Printer:' is set to 'Splash Server' and 'Destination:' is set to 'Printer'. Below this, the 'Cover Page' tab is selected. The 'Print Cover Page:' section has 'None' selected with a radio button, and 'Before Document' and 'After Document' are unselected. The 'Cover Page Paper Source:' is set to 'Same as document'. At the bottom, there are three buttons: 'Save Settings', 'Cancel', and 'Print'.

The Cover Page option generates a page that lists your name, the application from which you are printing, the name of your file, the date and time of printing, the printer name, and the number of pages you are printing (not including the cover page). Use the default, None, when you do not want to print a cover page. Select Before Document to print a cover page before your file prints, or select After Document to print a cover page after your file prints. If desired you can select a different paper source for the cover page.

Note: If “Print Cover Page” is selected in the Splash Server application, and you select the LaserWriter 8 Cover Page option when you print, Splash prints two cover pages for the job.

7. Choose Color Matching to set LaserWriter 8 color matching options.

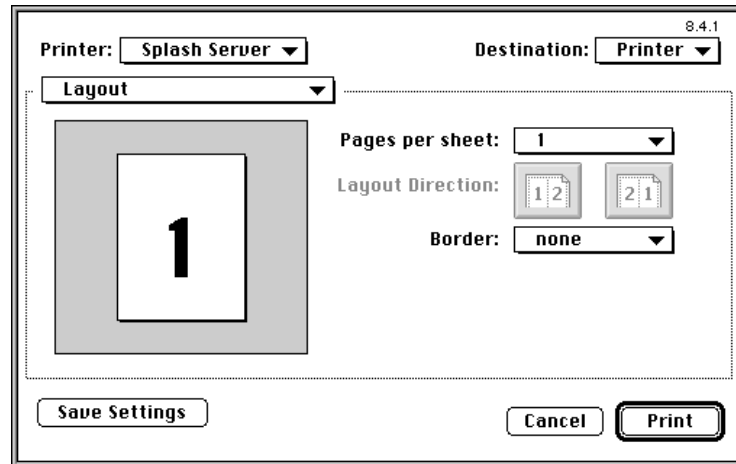


- **Color/Grayscale** in the Print Color pop-up menu prints color or grayscale images in their original form.
Note: If Splash RGB color correction is applied to the print job, the **Color/Grayscale** option produces the same results for the job. Splash color correction is applied for this selection.
- **ColorSync Color Matching** activates a ColorSync profile for RGB color correction. Unless you have a custom ColorSync profile for your monitor, you will achieve the best color correction results when you use Splash RGB color correction. If you use ColorSync color correction, be sure that Splash RGB color matching is disabled in the LaserWriter 8 print driver.

- **PostScript Color Matching** lets you use other PostScript Color Rendering Dictionaries (CRDs) to color correct RGB files. Be sure that Splash RGB color matching is disabled before you print a document with a third-party CRD to Splash.
- **Black and White** produces a monochrome (black-and-white, *not* grayscale) image, and is recommended only for printing true monochrome images.

If you activate PostScript Color Matching or ColorSync Color Matching for the print job, select a Printer Profile in the menu.

8. Choose **Layout** to print one, two, four, six, nine, or sixteen pages from your file on a single sheet of paper.



Choose the number of Pages per sheet. For 2 or more pages per sheet, select a Layout Direction. If desired, you can print a border around each page printed on a sheet.

9. Choose **Error Handling** for special PostScript error reporting options. No Special Reporting, the default setting, means no errors will be reported.

Printer: **Splash Server** Destination: **Printer** 8.4.1

Error Handling

If there is a PostScript™ error:

- No special reporting
- Summarize on screen
- Print detailed report

Save Settings **Cancel** **Print**

10. Choose **Save as File** to select options if you want to save the print output as a PostScript file instead of printing hardcopy at the printer/copier.

Printer: **Splash Server** Destination: **Printer** 8.4.1

Save as File

Format: **PostScript Job**

PostScript Level: Level 1 Compatible
 Level 2 Only

Data Format: ASCII
 Binary

Font inclusion: **None**

Save Settings **Cancel** **Print**

The Save as File options are applied when **PostScript File** is selected in the Destination pop-up menu (in the upper-right corner of the window).

Select **Printer** as your print destination to send your document to Splash. See “Creating a PostScript File” on page 48 for more information.

11. Choose **Splash Color Options** to select Splash color print options, including Splash color correction.

Printer: **Splash Server** Destination: **Printer** 8.4.1

Splash Color Options

Color Model: Color Grayscale Printer Mode: Contone Screened

RGB Monitor Color Correction
Rendering Style: **Photographic**
Gamma: **Normal**
White Point: **Normal (D65)**

Enable CMYK Press Color Correction Composite Spot Color
Press Profile: **SWOP**

Save Settings **Cancel** **Print**

See “Setting Splash Color Options” on page 35 for information about these print options.

12. Choose **Splash Tray Options** to select more Splash options.

Printer: **Splash** Destination: **Printer** 8.4.1

Splash Tray Options

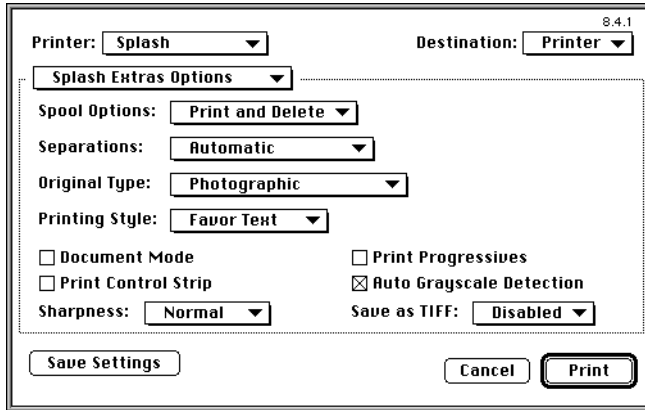
Bypass Tray Options:
 Normal (Paper Or Transparency)
 Heavy Weight Paper
 Transparency Interleave
 Oversize Transparency

Paper Handling:
 Use Sorter
 Collate
 Reverse Page Order

Save Settings **Cancel** **Print**

See “Setting Splash Tray Options” on page 38 for information about these print options.

13. Choose **Splash Extras Options** to view and select more Splash options.



See “Setting Splash Extras Options” on page 42 for information about these print options.

14. When you have finished selecting options for the document, click **Print**.

Canceling a Print Job from the LaserWriter 8.4.x Driver

If you send a large print job to Splash from a Macintosh using the LaserWriter 8.4.x driver, and then attempt to cancel the job with the LaserWriter 8 driver, some pages of the canceled job may print.

Using the Splash Print Options

This section describes how to use the special print features of the Splash color print server. The options described in this section are available when you print to Splash with either the custom Splash driver or the LaserWriter 8 driver with the Splash printer description file selected.

Setting Splash Color Options

The Splash Color options let you set up the printer/copier for four-pass color printing or grayscale printing, with contone or halftone screening. You also can apply Splash color correction to your print jobs.

Color Model

Select **Grayscale** or **Color** printing as a Color Model for your output. Grayscale images produce similar results with either mode; however, images process and print significantly faster in Grayscale mode than in Color mode.

Printer Mode

This option switches printer output between **Contone** (full color) output and **Screened** output. When screened is selected, Splash applies halftone screening to the color image. In certain circumstances (such as documents composed primarily of large areas of saturated color) halftone screening produces better results in the printed output.

The screening method used when “Screened” is selected is configured at the Splash Server. The default screening method is stochastic. See the *Splash PCI Series 5.0 Set Up Manual* for more information.

RGB Monitor Color Correction

Splash RGB Monitor Color Correction gives you simple-to-use, accurate, and consistent results for:

- Documents with mixed EPS and TIFF file types
- Documents printed with either the Splash (LaserWriter 7) driver or the LaserWriter 8 driver with Calibrated Color/Grayscale selected for printing
- Documents created with all applications—both “pre-press” applications (such as QuarkXPress) and non-pre-press applications (such as Microsoft Word)

Splash uses advanced, proprietary techniques to accurately color correct mixed EPS, TIFF, PICT, and other “problem” page layout files that cannot be accurately corrected and printed by other CMS and RIP combinations.

To apply Splash RGB color correction to the print job, check **RGB Monitor Color Correction**, then select the appropriate RGB options from the pop-up menus.

Select a **Rendering Style** option that describes how the document was created:

- Choose **Graphics** for documents that were created with a computer graphics application. This option is designed to optimize printing of more saturated colors, such as those used in business presentation documents.
- Choose **Photographic** to match the colors of various photographic images scanned by the Xerox or Fuji Xerox printer/copier, or other scanners. This is the best option to choose for proofing photographic material.

The **Gamma** and **Whitepoint** options adjust Splash color correction to simulate the monitor used to view and work with the document. For most purposes, choose **Normal (1.8)** for Gamma, and choose **Normal (D65)** for Whitepoint.

Gamma describes how a device reproduces tonal gradations. This setting applies to both the input device (such as a scanner) and the output device (such as a computer monitor or a printer). You can use this option to lighten or darken the RGB content of a particular document. The Gamma options are:

- Lightest (1.0)
- Light (1.4)
- Normal (1.8)
- Dark (2.2)
- Darkest (2.6)

Splash RGB color correction provides three standard whitepoint options. The options simulate various lighting conditions for proofing color documents. This option can be used to adjust the RGB content in a particular document relative to the whitepoint of the monitor. If flesh tones or red tones are too magenta, skies and other blues too cyan, and grass and greens too dark (almost bluish), change the Whitepoint selection from “Normal” to “More Blue.” If flesh tones and reds are too yellow, blues too purple, and greens too yellow, change the Whitepoint setting from “Normal” to “More Yellow.”

The Whitepoint options are:

- More Yellow (D50 Proofing)
- Normal (D65)
- More Blue (9300)

See page 49 for more information about Splash color correction.

CMYK Press Color Correction

To apply Splash CMYK color correction to the print job, select the **CMYK Press Color Correction** checkbox, then select the appropriate **CMYK Press Profile** option from the pop-up menu.

- **SWOP** simulates SWOP inks.
- **Euroscale** simulates Euroscale press inks.
- **Enhanced** prints vivid colors on your output. (This profile is not intended for printing press proofs.)
- **Custom1** through **Custom10** are customizable options set at the Splash Server. Ask your Splash Server administrator about the current settings for these.

See page 49 for more information about Splash color correction.

Composite Spot Colors

Splash can simulate PANTONE, Toyo, or DIC spot colors when you add them to your documents. You must print your documents in composite mode to use this feature.

Set the Composite Spot Color type (PANTONE, Toyo, or DIC) in the Splash Server Preferences (see the *Splash PCI Series v5.0 Set-Up Manual* for instructions). Select the **Composite Spot Colors** checkbox at the printer driver before you print. Splash produces output that simulates the spot color on a printing press.

Note: This feature supports only 100% (non-tinted) spot colors. For best results, do not mix regular press CMYK colors in the same document with spot colors when you use this feature. (Some press CMYK colors may be interpreted as spot colors.)

Setting Splash Tray Options

These options let you select the tray your job prints to, and tells the printer/copier how to sort or collate the printed job.

Tray Selection

- Select **Automatic** to have the printer/copier search for the tray that contains the paper size you specified in the Page Setup dialog box.
- Select **Tray 1**, **Tray 2**, **Tray 3**, or **Tray 4** to choose a specific tray (to print a document on letterhead or colored paper installed in a single tray, for example.)

Note: If Tray 4 is selected and the printer/copier does not support a 4th paper tray, the print job is handled by the Automatic tray selection feature. Tray 4 is available only with the Acolor 620 or DocuColor 5750 printer/copier.

- Select **Bypass Tray** to print your file on the paper or transparency film loaded in the Bypass (manual feed) tray.

Bypass Tray Options

To print your job to the bypass tray on the printer/copier, select Bypass Tray under Tray Selection, then select a Bypass Tray Option.

- Select **Normal (Paper or Transparency)** to print on recommended paper between 16 to 24 pound or 60 to 105 gsm Xerox transparencies with a white leading edge. For information on recommended transparencies, refer to the manuals supplied with your printer/copier.
- Select **Heavy Weight Paper** to print on paper that is heavier than 24 pound or 105 gsm. See the manuals supplied with your printer/copier for information on recommended heavyweight paper.
- Select **Transparency Interleave** to have the printer insert blank sheets of paper between printed transparencies. For transparency interleave, you must have a paper size that matches the transparency film size installed in a cassette. If no matching paper size is installed, the transparencies are printed without separating sheets.
- Select **Oversize Transparency** to print transparencies larger than A4 (such as A3). This option is for use with the Acolor 930 series, Regal, DocuColor 5799, Acolor 620 series, or DocuColor 5750 printer/copier models. The Normal (Paper or Transparency) option does not work with oversized transparencies.

IMPORTANT: *You cannot use oversize (larger than A4 or Letter) transparencies with the MajestiK and Acolor 630 series copier/printers. Attempting to do so will result in a paper jam or damage to the printer/copier. However, the Oversize Transparency option works with supported transparencies (A4 and Letter) for these printer/copier models. This option produces the same results as the Normal (Paper or Transparency) option.*

The following Bypass Tray options can be used when the Splash Server is used with an Acolor 620 or DocuColor 5750 series printer/copier:

- **Special Heavy Paper**
- **Coated Paper**
- **Single Step Transfer**
- **Labels**

See the manuals supplied with your printer/copier for information on recommended paper types for these Bypass Tray options.

The following Bypass Tray option can be used when the Splash Server is used with an Acolor 620, DocuColor 5750, or DocuColor 5799 series printer/copier:

- **Tack Film.** The paper sizes supported for this Bypass Tray option are Letter and A4 only. See the manuals supplied with your printer/copier for information on recommended paper.

When you insert paper or transparencies into the Bypass tray, the printer/copier defaults to its Paper Type (Bypass) mode. Push the yellow Clear All button on the printer/copier after you insert the paper or transparencies to return immediately to the print mode.

Paper Handling Options

Use the Splash **Paper Handling** options to print collated documents.

- If the optional sorter is attached to the printer/copier, select the **Use Sorter** checkbox to put all copies of page 1 into bin 1, page 2 into bin 2, and so on. When the checkbox is not selected Splash stacks all output pages on top of each other in the bin on the top of the copier.
- Select the **Collate** checkbox to print all pages of copy 1, then all pages of copy 2, and so on. When “Use Sorter” is selected also, Splash sends each copy of a job to a different bin (copy 1 of pages 1-n go into bin 1, copy 2 into bin 2, and so on). When “Use Sorter” is not selected Splash sends all copies on top of each other in the bin on the top of the copier.

Note: If you are using the DocuColor 5750 or Acolor 620 series printer/copier, you cannot select **Use Sorter** unless you select **Collate**. Do not select Printer’s Default for either setting.

- Select the **Reverse Page Order** checkbox to print jobs starting with the last page of the document. Collated documents that are sent to the top bin of the copier end up face-up with page one on top.

Note the following when you use the Splash Reverse Page Order option:

- If your application provides reverse order printing (sometimes called “reverse order” or “back-to-front” printing), select the application’s option instead of the Splash print driver option.
- If a sorter is connected to the copier, and you want to print multiple collated copies, use the sorter. (For a MajestiK, Regal, DocuColor 5799, or Acolor 63x/93x copier, if more than 20 copies are needed, rerun the print job in batches of 20. For a DocuColor 5750 or Acolor 620 copier, if more than 10 copies are needed, rerun the print job in batches of 10.)
- Do not select Reverse Page Order for a separations print job.
- Print jobs with Reverse Page Order selected do not use the Splash RIP While Receive feature.

Note the following when you use the sorter:

- Do not attempt to print more collated copies than there are bins. If more than 20 copies are selected, 20 copies print and the job is returned to the queue with an error message.
- For the Acolor 620 and DocuColor 5750, do not attempt to print more than 10 copies or more than 50 pages per copy when you print collated jobs to the sorter. For the MajestiK, Regal, and Acolor 630/930 series printer/copiers, do not attempt to print more than 20 copies or more than 50 pages per copy when you print collated jobs to the sorter.
- For the MajestiK, Regal, DocuColor 5799, and Acolor 630/930 series printer/copiers, do not attempt to print more than 20 copies or more than 50 pages per copy when you print uncollated jobs to the sorter. This capability is not available for the Acolor 620 or DocuColor 5750.
- If multiple successive jobs need to use the sorter, the pages from the first job must be cleared before the second job can print. An error dialog appears, and the printer/copier waits until the bins are cleared. If the bins are not cleared within 5 minutes, the job errors back into the queue.

IMPORTANT: Be sure to disable the “collate” option in your applications before you print to Splash. Some applications provide a collate option that appears in the Print dialog box. Many applications activate the collate option as a default setting, so you must be sure to uncheck this option in the Print dialog box before you print. If the collate option in your application is activated (checked) it usually interferes with the Splash sorter feature and results in all pages of your document being placed in a single tray by the printer/copier.

Providing User Information

When you print to Splash with the custom Splash driver you can enter identification information for your print job, if needed. (This feature is not available when you print to Splash with the LaserWriter 8 driver).

Document Owner and Password

These optional text fields allow you to enter your name and password, if needed. The text you enter here appears in the job information dialog box for the spool file at the Splash Server. If you do not enter your name, the job includes the network identification name for your Macintosh (from the Sharing Setup control panel). Contact your Splash system administrator to learn what information you need to provide in these fields.

Document Comment

An optional text field for any additional information about the print job. Contact your Splash system administrator to learn what information you need to provide in this field.

Setting Splash Extras Options

This section describes other Splash options you can apply to your print jobs.

Spool Options

Splash provides three options for handling the PostScript spool file that is created when you print to Splash:

- **Print and Delete** automatically deletes the spool file after printing the job.
- **Print and Save** saves the spool file after printing. The job is transferred to the Hold queue with the message “*PostScript spool file saved as requested.*”
- **Send and Hold** sends the spool file directly to the Hold queue after is received by the Splash Server.

Saving the spool file is useful when small quantities of the same file must be printed occasionally. You can change print options for the saved spool file before printing with the Splash Server application. See the *Splash PCI Series v5.0 Set-Up Manual* for information.

Note: Saved spool files remain in the Hold queue until you delete them. To delete a spool file, select it in the Splash Server Hold queue, then press the Delete key.

Separations

Some applications, most notably page layout applications such as PageMaker and QuarkXPress, can produce “separations” as printed output. These are intended to be imaged on film imagesetters and thus each page is converted to one or more (usually four) output grayscale “pages.” If you print separations to a printer that does not have a special separations feature, you will get one grayscale page per color in the original page.

The Splash Server has the ability to re-composite these individual pages back into a single color page to produce a real proof (equivalent to the proof that would be produced from the films via conventional means). The primary benefit of separations is to show overprinted objects with proper colors and to make trapping visible.

The Splash **Separations** print option prints a composite page from applications that support separations printing.

- Select **Automatic** to apply the Splash Separations feature to all your separations print jobs automatically. This default option supports CMYK plates plus any number of plates in PANTONE, Toyo, or DIC (if these press colors are supported by your separations application). This option supports separations generated by any application. When this option is selected Splash supports the full range of PANTONE, Toyo, or DIC colors and tints in your documents.

Note: The Splash Separations feature does not accurately represent traps or overprints composed of a PANTONE, Toyo, or DIC color.

- Select **None** to disable the Splash separations feature for a job.

The remaining separation options, **QuarkXPress Style**, **PageMaker Style**, **FreeHand Style**, and **Canvas Style** use a separations technique from version 4.0 of the Splash PCI Series software. These options require that the separations job be made up of exactly four process-color plates. These options do not support additional PANTONE plates. If problems occur in the output when you print separations with “Automatic” selected, convert the colors in your document to four process plates then select the v4.0 separations option that matches your application.

Separations Notes:

The Splash Separations print feature supports printing of high-resolution DCS (Desktop Color Separation) files. To print a high-resolution proof of a DCS file activate the separations feature within your application and in the Splash driver print options dialog box.

The Separations feature is not compatible with Adobe Separator separation jobs. To use separations with Adobe Illustrator (typically done with Adobe Separator), create an EPS and place it into either a QuarkXPress or PageMaker document.

Do not choose the Cover Page option in your application’s print dialog box when you print a separations job to Splash. The cover page is interpreted as a color plate, which causes unexpected results in the separations job. (This problem does not occur when the Print Cover Page option is active for the Splash Server application.)

For best results, do not use the version 4.0 separation options to files with spot colors. Always choose “Automatic”. If your job reports a PostScript error printing a CMYK-only file (no spot colors) with the “Automatic” separation option, try printing with one of the version 4.0 separation options.

If a separations document contains one or more spot colors, any spot colors that are not known by the system will be printed as black (or grayscale for tints). The job will not error. If the spool file “print and save” option is selected for the job, the spool file at the Splash Server will show the message “Document printed, but unknown spot color: NAME. Run Preflight report for more details.” (NAME is the name of the unknown spot color.)

If you use a v5.0-style CMYK color correction profile with a separations file, any black areas (including those created with CMY inks) will print using mainly black (K) toner. If you want the output to be closer to the original CMYK values for the purpose of retaining trapping, select a v4.0-style CMYK color correction profile for the job.

Original Type

This print option sets printer/copier screening and filtering to optimize output based on the image type.

- Choose **Photographic** for photographic originals to optimize the output, using a 200-line screen at 400 dpi. This is the best option to choose for color images.
- Choose **Text/Graphics/Line Art** to optimize the output of all other data types, including text and line art, using a 400-line screen.

Note: When “Text/Graphics/Line Art” (400-line screen) is used, even if color correction mode is selected, appropriate colors are not always printed. The colors printed sometimes differ from when “Photographic” is selected. For documents that emphasize the color image, choose “Photographic.” For documents that emphasize sharp lines (such as a map), choose “Text/Graphics/Line Art.”

For best results with Splash color correction, choose the “Photographic” option under Original Image Type. The “Text/Graphics/Line Art” option should be used only for documents that need to show crisp detail.

Document Mode

Select the **Document Mode** checkbox to print the document with the Splash Continuous Print feature. This feature dramatically speeds up printing at the copier.

Note: When this feature is selected, Splash applies screening to the output to achieve faster print processing. This feature does not allow contone printing. Select this option when speed of printing is the highest priority for your output.

Printing Style

The **Printing Style** option you select determines how the Splash Server processes your print job when Document Mode is selected. For some print jobs, Splash must reduce the quality of images or text to accomplish faster printing at the copier. The Printing Style option lets you decide which element is more important in your final output. Choose **Favor Image** (the default setting) to produce the best possible quality for documents with photographic materials and large areas of color. Choose **Favor Text** to produce the sharpest-possible text and lines in the final output.

Print Control Strip

When the **Print Control Strip** checkbox is selected, Splash prints a set of color control patches on the edge of the output. This option can be configured to print either color patches or an EPS file or both. See the *Splash PCI Series v5.0 Set-Up Manual* for more information.

Print Progressives

When the **Print Progressives** checkbox is selected, Splash prints up to four separate sheets for the print job. This print option is configured at the Splash Server to specify which color passes print on each sheet. This allows you to examine the result of each color pass for a four-color document. See the *Splash PCI Series v5.0 Set-Up Manual* for more information.

Note: Do not choose the Cover Page option in your application's print dialog box when you print a progressives job to the Splash Server. The cover page is interpreted as one of the progressives pages, which causes unexpected results in the job. (The problem does not occur when the Print Cover Page option is active for the Splash Server application.)

Note: If you are using progressives to create press proofs, for best results select one of the Splash v4.0-style one-dimensional CMYK Press Color Correction profiles for the print job (see “CMYK Press Color Correction” on page 37). Ask your Splash system administrator for information about the current CMYK profile settings. See the chapter “Calibrating With ColorCal” in the Splash Reference Manual for more information about CMYK Color Correction profiles.

Sharpness

The Sharpness control lets you enhance or soften the edges of your image when you print. (When you apply a Sharpness setting, no additional processing time is required.) The Sharpness settings are:

- Softest
- Soft
- Normal
- Sharp
- Sharpest

The Sharpness feature is not available with the Acolor 620 or DocuColor 5750 printer/copier.

Auto Grayscale Detection

Automatic Grayscale detection (enabled by default in the print driver) checks each page to see if a page has any color on it before printing. If there is no color detected on the page, the copier prints in single-pass grayscale mode, which speeds-up printing, especially for multi-page documents that contain only some color pages. Disable this feature for maximum printing performance when printing documents that have color on every page. (When active, this feature adds approximately one-half second to the printing of each color page.) To disable Automatic Grayscale Detection, deselect the **Auto Grayscale Detection** checkbox.

This feature is active when the Color Model is set to “Color” (see page 35). Automatic Grayscale Detection speeds-up printing for multi-page documents in which some pages are black only, and other pages have color on them. (This also reduces the cost of printing, as you are charged for fewer color pages.) The log file indicates the number of pages within the document that were printed in grayscale mode on the copier as a result.

For fastest printing of an entirely black and white document, set the Color Model to Grayscale for the print job (see page 35).

Save as TIFF

Saves a rasterized 72, 200, or 400 dpi TIFF file. The TIFF file is placed in the TIFF Folder within the Splash Folder on the Splash Server computer. To activate this feature, choose a resolution from the pop-up menu.

When Save As TIFF is selected, files are not printed, but are instead saved as files in the TIFF Folder within the Splash Folder on the Splash Server Macintosh. The TIFF Folder is pre-configured for network access by clients. This setup allows someone at a client machine to retrieve TIFF files from the TIFF Folder on the Splash Server, and to delete TIFF files from the folder once they have been copied to the Client Macintosh.

Note: If you select a paper tray for a Save As TIFF job, the print job will error at the Splash Server. Always select Auto Tray Select for Save As TIFF jobs.

Creating a PostScript File

The Drop Folder on the Server Macintosh lets you print files that are in text-based processed PostScript format, without the need to install a special PostScript file downloader on the Server or client Macintosh. While most PostScript downloaders will work with Splash, the Drop folder provides a more convenient “drag and drop” method for printing PostScript files. You can also print TIFF and EPS files to Splash with the Drop Folder. If you are at the Splash Server computer, you can print TIFF, EPS, and PostScript files by dragging them onto the Waiting queue in the Splash Server window.

To create a PostScript file, choose the PostScript File option in the Print dialog box. (Use the custom Splash printer driver or the LaserWriter 8 driver with the Splash PPD selected when you create PostScript files. PostScript files created by other drivers may not print correctly.)

To print a PostScript file, place it in the Drop Folder, which is located in the Splash Folder on the Splash Server Macintosh, or drag it onto the Waiting queue in the Splash Server application window. The Server application automatically moves the file to the Spool Folder.

- If the file can be printed, it is placed in the Waiting queue at the Splash Server.
- If the file cannot be printed, the spool job is transferred to the Error queue in the Splash Server window. The PostScript file is moved to the Unprintable Files folder in the Splash Folder. This folder is created in the Splash Folder the first time a file cannot be printed.

PostScript File Printing Notes

For Splash PCI Series Servers the Drop Folder is preconfigured for guest access on the Splash Server. For more information about Apple file sharing and how to set up a shared folder, refer to the *Macintosh User's Guide* included with your computer.

The PostScript Drop Folder on the Splash Server cannot print locked PostScript files. If a locked file is placed in the Drop Folder, it remains in the Drop Folder and does not print. Any PostScript files that are placed in the Drop Folder after the locked file do not print until the locked file is removed from the Drop Folder or unlocked. To unlock a file, the file's owner must select the PostScript file's icon and then choose Get Info from the File menu. Uncheck the “Locked” option in the file information dialog box.

Splash Color Correction

Splash provides powerful, built-in color correction capabilities. With Splash color correction you can match your prints to the colors of the image on your display screen, and to process inks used on commercial printing presses.

Documents that use both RGB and CMYK graphics used to be a special problem for color proofing. Correcting color for one type of graphic affected the quality of the other. Now, with Splash mixed RGB/CMYK color correction, you get accurate, consistent color for both.

Splash color correction eliminates the color variation that occurs when you print a document as a PostScript file instead of to hard copy, and produces the same RGB color results for both TIFF and EPS files. And since color correction is applied by Splash (instead of by the application) any print job can be color corrected; whether you use a pre-press application such as QuarkXPress, or a less-complex application such as Microsoft Word.

CMYK color correction in v5.0 of the Splash PCI Series is improved for matching mixed press ink colors. Splash CMYK color correction automatically compensates for differences between toner and press ink colors to produce an accurate simulation of the selected press ink profile.

To ensure the closest possible color correction, use a display calibrator to compensate for the variations of your individual monitor, the lighting conditions in your office, and the white point of your paper.

Two “identical” but uncalibrated monitors may display an image differently enough to exceed the ability of a color correction application to closely match them. In addition, the colors you see on your printed page are affected by the light that is reflecting off the toner, and by the particular shade of white in your paper. If you do not calibrate your display, you may not be taking advantage of some significant benefits that your color correction application offers. Display calibrators can standardize the colors on your display and compensate for different lighting conditions and white points.

If you prefer, you can disable Splash color correction and use a third-party color management system, or ColorSync 2.0 to accomplish your screen-to-print or process ink-to-print color correction. (Color correction using a third-party color management system will increase processing time.)

The Splash ColorCal application calibrates the printer/copier output for best results with Splash color correction. ColorCal gives you consistent printing of colors over time, and ensures that RGB output matches a calibrated monitor and that CMYK output matches Press standards. See “Calibrating with Splash ColorCal” in the *Splash Reference* on-line manual for more information on Splash ColorCal.

Splash Color Correction Notes

To achieve the best results with Splash color correction, note the following:

- When both RGB and CMYK color correction are applied to a print job, any RGB colors in the document are mapped into the gamut of the CMYK color profile. RGB colors within the CMYK profile color gamut will match the RGB monitor settings (gamma and whitepoint), but RGB colors outside the CMYK profile color gamut may develop desaturation and hue shifts.
- If your document contains no CMYK data, or if the RGB colors are primarily out of the CMYK profile color gamut, be sure to turn off Splash CMYK color correction in the printer driver. If CMYK color correction is applied to these files, the RGB colors will be restricted to the CMYK profile color gamut and saturated colors may develop desaturation and hue shifts.

IMPORTANT: MOST BUSINESS APPLICATION DOCUMENTS CONTAIN ONLY RGB DATA. CMYK COLOR CORRECTION SHOULD NORMALLY BE TURNED OFF FOR PRINTING THESE DOCUMENTS.

- For best results with Splash color matching, set the Original Image Type print option to “Photographic” style. The alternative option, “Text/Graphics/Line Art” should be used only with grayscale documents or documents that need to show crisp line detail, such as a map.
- If you use QuarkXPress, you must disable EFICOLOR before you can print with Splash RGB color correction. To do this, remove either the “EfiColor Processor” file from the MacOS System folder, or the “EfiColor XTension” from the QuarkXPress application folder. (**Note:** Disabling EFICOLOR correction in the QuarkXPress application is not sufficient. QuarkXPress converts all RGB data to CMYK using EFICOLOR color correction, even if EFICOLOR is disabled in the application. You must remove one of the two EFICOLOR files to prevent EFICOLOR from interfering with Splash color correction.)

Optional RGB Photographic Rendering Style Color Correction

If desired, you can alter Splash RGB Monitor “Photographic” Rendering Style color correction to be similar to that found in v3.1 of Splash. To do this:

1. Open the Resources folder in the Splash Folder on the Server.
2. Rename the file “PhotoCRD.ps” to “PhotoCRDsave.ps” (or some other name to indicate that it should not be deleted).
3. Locate the file “PhotoCRD.ps” in the “3.x Compatibility” folder which is in the Splash Extras folder within the Splash Folder on the Splash Server.
4. Copy the “PhotoCRD.ps” file to the Resources folder in the Splash Folder.
5. Quit and then relaunch the Splash Server application to initialize the Server application with the new PhotoCRD.ps file.

After you complete the above procedure, when you print a file to the Splash Server with RGB color correction active, and Photographic Rendering Style selected, the color output is closer to that found in v3.1 of Splash, though saturated colors are flatter. This procedure does not affect Splash RGB Graphics Rendering Style color correction.

IMPORTANT: *For best results with this optional RGB rendering style, print with CMYK color correction turned off. Also, be sure to set the Pass Through profile to “Uncalibrated” with the Splash ColorCal application at the Server. (See the chapter “Calibrating with Splash ColorCal” in the Splash Reference on-line manual for instructions on how to do this.)*

Note that the optional RGB Photographic Rendering Style does not produce the best results for files that include saturated colors (such as those used in business or presentation graphics documents), or for files with any CMYK color data.

To return Splash RGB Photographic Rendering Style Color Correction to its original capabilities, rename the “PhotoCRD.ps” file in the Resources folder, and change the name of the “PhotoCRDsave.ps” file back to “PhotoCRD.ps” then restart the Server application.

Splash ICC (ColorSync) Profiles

Splash provides color profiles for use with Apple's ColorSync color management software. If desired, you can print to Splash using ColorSync with these profiles. (Be sure to disable Splash color correction in the print driver before printing with ColorSync color management.)

The Splash ColorSync profiles are located in the ColorSync™ Folder within the Splash Extra folder in the Splash Folder on the Splash Server. See the ColorSync documentation for instructions on how to use ColorSync.

For best results with ColorSync, be sure the Splash Pass Through profile is set to "Visual Standard" with the Splash ColorCal application. (See "Calibrating with Splash ColorCal" in the *Splash Reference* on-line manual for more information.)

Adobe Photoshop Color Separation Tables for Splash

Splash provides color separation tables that work with the Adobe Photoshop Separation Tables feature. The tables convert RGB images into separations for a printing press. (Note: These separation tables produce the same results as when you use Splash RGB color correction to create press separations.) The Splash color separation tables are located in the "Photoshop Separation Tables" folder within the Splash Extras folder in the Splash Folder on the Splash Server.

If you are working with RGB images in Adobe Photoshop and you need to create separations for press printing, follow these steps to use the Adobe Photoshop Separation Tables feature:

1. In the File menu, point to the Preferences option, then drag to choose "Separation Tables."
2. Click the Load button, then use the Open dialog box to locate and open the "Splash Separation Tables" folder.
3. Select a separation table: SWOP, Euroscale, and so on.

See the documentation provided with Adobe Photoshop for more information about how to use Adobe Photoshop Separation Tables.

Chapter 3

Checking the Splash Print Queue

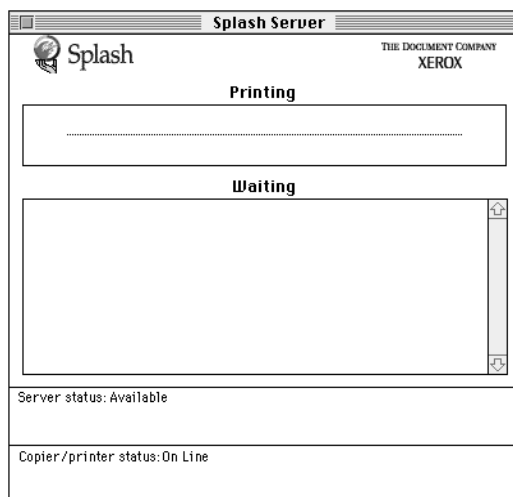
The Splash Server provides two ways for you to check the status of jobs in the print queue from a Macintosh client:

- The Splash Status DA is installed automatically with the Splash Macintosh Client software. Splash Status can be used from any Macintosh that is set up for printing to Splash.
- The Splash Web Queue Manager is an optional print queue manager. This option is available if the Splash Server is on a TCP/IP network and if Splash Web services are enabled at the Splash Server. This option requires that you install Netscape Navigator (v3.0 or later) or Microsoft Explorer (v3.0 or later) at the client computer.

This chapter describes how to use both of these Splash print queue status tools.

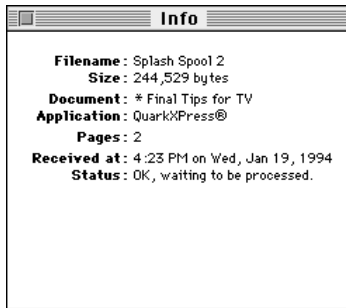
Using the Splash Status DA

To check the print queue from a client Macintosh, select Splash Status from the Apple menu. The Splash Server window displays all the jobs in the print queue.



Printing information for the current job appears below the print job name.

To see detailed information on a job, double-click the job, or select the job, and then choose Get Info from the File menu. The Info window appears:



If any errors occur on the job, this window displays them. The chapter “Splash Error Messages” in the *Splash Reference* on-line manual provides a list of error messages. To close this window, click the box in the upper left corner.

If the Remote Queue Management preferences are set in the Splash Server application to allow access (see the *Splash Set-up Manual* for instructions), you can place a job on hold, delete it, or move it up and down in the queue using commands in the Splash Status menu.

- To place a hold on a job, click the job to select it, then choose Hold from the Splash Status menu. To take the job off hold, click it, then choose Remove Hold from the Status menu.
- To make a job print sooner, click it, then choose Move Job Up from the Status menu. Each time you do this, the job moves up one place in the queue.
- To force a job to print later than other jobs, click it, then choose Move Job Down from the Status menu. Each time you do this, the job moves down one place in the queue.
- To cancel a print job, click it, then choose Delete from the Status menu.

The Status window displays information for the Splash server that was selected in the Chooser at the time you opened the Status DA. If you select a different server while the Status window is open, you must close and then reopen the Status DA to display information for the new server.

IMPORTANT: *If the Splash Server stops running before you have quit the Server application (for example, if a system error causes the Splash Server to shut down unexpectedly), any changes made to the print queue are lost and must be re-entered from the Splash Server application.*

Macintosh Status DA Notes

To remotely manage jobs from a client Macintosh with the Splash Status DA, you must set the “Owner Name” for your client Macintosh. To do this, open the Apple menu, point to Control Panels, then choose Sharing Setup. Enter a name in the “Owner Name” field under Network Identity, then close the Sharing Setup control panel.

Using the Splash Web Queue Manager

If the Splash Server is set up on an Internet or Intranet, and you have Netscape Navigator or Microsoft Explorer installed, you can connect to the Splash Server and remotely view and control the Server printer queue. The Splash Web Queue Manager lets you view and edit print commands for your jobs in the queue, temporarily halt your job from printing, or remove your job from the print queue. In addition, you can send graphics files such as TIFF and EPS, and text based PostScript files to the Splash Server for printing.

Before you can use the Splash Web Queue Manager:

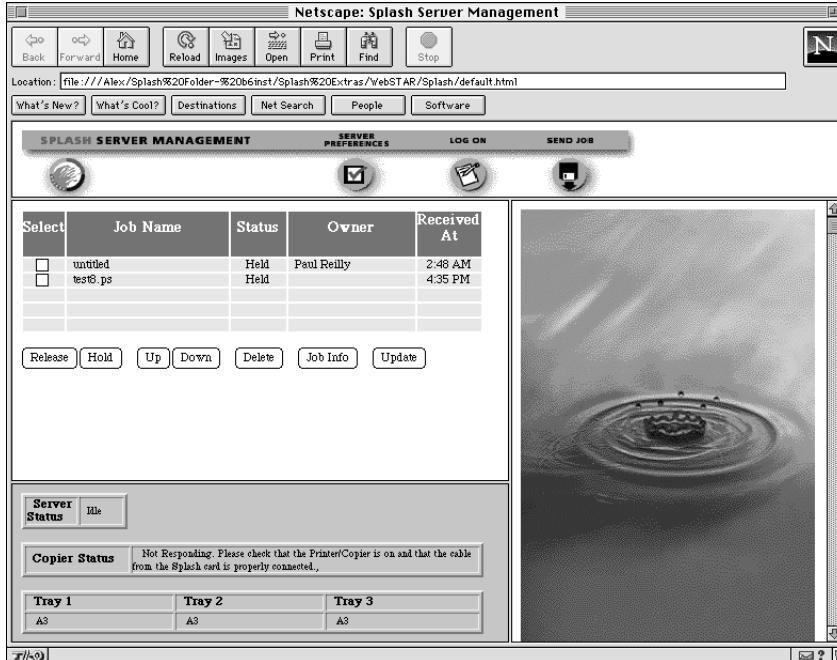
- The Splash Web Queue Management option must be installed and enabled at the Splash Server.
- The client Macintosh must be running on a TCP/IP network (contact your network administrator for help with this).
- Netscape Navigator (v3.0 or later) or Microsoft Explorer (v3.0 or later) must be installed on the client Macintosh.

Note: Microsoft Explorer does not support sending files to the Splash Server for printing.

Contact your network administrator for help setting up your computer to use the local Intranet or Internet service. In addition, your administrator needs to provide you with the web address (URL) for the Splash Web Queue Manager.

To use the Splash Web Queue Manager from a client Macintosh:

1. Open the web browser application (Netscape Navigator or Microsoft Explorer).
2. In the web browser, enter the web address for the Splash Server. (Contact your Splash administrator for this information.)
3. The Splash Web Queue Manager appears in the browser application window.



A list of print jobs waiting to print at the Splash Server appears on the left in the Web Queue Manager. Information about the Xerox or Fuji Xerox printer/copier appears at the bottom. If an error occurs at the copier, this information displays. (The chapter “Splash Error Messages” in the *Splash Reference* on-line manual provides a list of error messages.)

To view information for a print job, select the checkbox to the left of the job in the list, then click the Job Info button below the job list. Information for the selected print job appears on the right in the Splash Web Queue Manager.

Jobs Information

Document:	Gradation1
Application:	Adobe Illustrator® 5.5
Sender:	PPC 9500
Pages:	1
Received At:	1:49 PM
Size:	131,344
Status:	Postscript spool file saved as requested.

If you select more than one job in the list, Splash provides information for each job you selected.

If the job has already been RIPped, you can click the Preview button in the Job Information screen to view a preview image of the job if your Splash Server is configured to support this feature.

Managing Print Jobs in the Queue

If the Splash Server is configured to allow client computers to manage print jobs in the queue, you can use the Splash Web Queue Manager to place jobs on hold, delete them, or move jobs up and down in the queue.

Use the command buttons that appear under the print job list to manage jobs in the Splash queues.

Select	Job Name	Status	Owner	Received At
<input type="checkbox"/>	test	Error	Paul Reilly	3:50 PM
<input type="checkbox"/>	test	Error	Paul Reilly	3:48 PM
<input type="checkbox"/>	SplashDefault.html	Error	Paul Reilly	3:39 PM
<input type="checkbox"/>	test	Error	Paul Reilly	5:21 PM

- To place a hold on a job, select the checkbox to the left of the job, then click the Hold button below the print job list. To take the job off hold, select it, then click the Release button.
- To make a job print sooner, select it, then click the Up button. Each time you do this, the job moves up one place in the queue.
- To force a job to print later than other jobs, select it, then click the Down button. Each time you do this, the job moves down one place in the queue.
- To cancel a print job, select it, then click the Delete button.

The job list updates to show the revised Splash Server queue information.

If the Splash Server is configured to limit remote print queue management, the Splash Web Queue Manager asks you to log on when you attempt to make changes to jobs in the print queue.

Security

Name:

Password
(optional):

Don't ask confirmation

Enter your user name and password, then click Register to complete logon. A message appears on the right to confirm your logon. The confirmation message tells you which jobs you have permission to manage with the Web Queue Manager.

Note: If you did not provide a user name and password when you originally sent the job, enter the “Owner” name that appears next to your print jobs in the Web Queue Manager job list.

Editing Print Jobs in the Queue

To view and change the print options for a job listed in the Splash Web Queue Manager, select the checkbox to the left of the job, click the Job Info button, then click the Edit button that appears below the job information. The current print options for the job appear.

Page Settings <small>[Pages Tray Color Extras Submit]</small>	
Number Of Copies:	<input type="text" value="1"/>
Page Range:	<input checked="" type="radio"/> All <input type="radio"/> Odd <input type="radio"/> Even <input type="radio"/> Selected <small>Example: 3,5,10-20,25-</small>
Duplex:	<input type="text" value="No Duplex"/>
Paper Handling:	<input type="checkbox"/> Use Sorter <input type="checkbox"/> Collate <input type="checkbox"/> Reverse Page Order <input type="checkbox"/> Staple <input type="checkbox"/> Face Up
Paper Size Handling:	<input type="checkbox"/> Force Paper Size To: <input type="text" value="Letter LEF"/> <input type="checkbox"/> Scale To Paper Size
Tray Settings <small>[Pages Tray Color Extras Submit]</small>	
Tray Selection:	<input type="text" value="Automatic"/>
Bypass Tray Options:	<input type="text" value="Normal Paper"/>

Click “Pages,” “Tray,” “Color,” and “Extras” at the top of the editor to view and select Splash print options for the job. (See Chapter 2 for complete information about the Splash print options.)

When you have finished selecting print options, click “Submit” at the top of the editor, then click “Save Settings” to confirm your changes.

Printing Graphics Files

With the Splash Web Queue Manager you can send graphics files such as TIFF, EPS, and PostScript files to the printer/copier for printing.

Note: Microsoft Explorer does not support sending files to the Splash Server for printing.

To send a TIFF, EPS, or PostScript file to Splash:

1. Click “Send Job” in the Splash Web Queue Manager window. The Splash Web Queue Manager editor appears.
2. Select print options for the job. The Web Queue Manager editor appears.

Send Job To Splash Color Server

This page allows you to submit a job to the Splash Color Server.
Your job can be a Postscript file, an EPS file, or any graphic format file
natively supported by Splash (TIFF, XWD ...) The following options will
be applied to your job.
After selecting the options click "Submit" in the tool bar to select and submit
your file.

Page Settings
[Pages Tray Color Extras Submit]

Number Of Copies:	<input type="text" value="1"/>
Page Range:	<input checked="" type="radio"/> All <input type="radio"/> Odd <input type="radio"/> Even <input type="radio"/> Selected <small>Example: 3,5,10-20,25-</small>
Duplex:	<input type="text" value="No Duplex"/>
Paper Handling:	<input type="checkbox"/> Use Sorter <input type="checkbox"/> Collate <input type="checkbox"/> Reverse Page Order <input type="checkbox"/> Staple <input type="checkbox"/> Face Up
Paper Size Handling:	<input type="checkbox"/> Force Paper Size To: <input type="text" value="Letter LRF"/> <input type="checkbox"/> Scale To Paper Size

Click “Pages,” “Tray,” “Color,” and “Extras” at the top of the editor to select Splash print options for the graphics file. (See Chapter 2 for complete information about the Splash print options.)

3. When you have finished selecting print options, click “Submit” at the top of the editor. Instructions on how to select the file to print appear.

Submit
[Pages Tray Color Extras Submit]

Select the file to Spool to the Splash Server by clicking on the "Browse" Button.
Select "Send" to send your file to the Splash Color Server.

Send this file:

4. Click Browse. A file selection dialog box appears. Select the file to print, then click OK in the dialog box.
5. Click “Send” to print the graphics file to the Splash Server.

The Splash Web Queue Manager transfers the file to the Drop Folder at the Splash Server. The Splash Server processes and prints the job.

Splash Web Queue Manager Notes

Job Selection Checkmarks Disappear

If you click to select a job in the Print Queue frame, and do not perform a command (such as Edit Job or Job Info) the checkmark disappears. This occurs because the server updates the Print Queue every so often. If no command is sent to the server, the server cannot tell that the job is selected at the client, so the checkmark is erased when the frame is refreshed.

Chapter 4

Application Notes

This section provides information about how to use specific Macintosh applications with a Splash Server. Review the Splash PCI Series v5.0 Product Update Notice for additional notes on using applications with the Splash Server.

General Application Notes

Bitmapped Fonts

If a Client Macintosh reports that a “bitmap is being created for the missing font since no printer font can be found,” it means that a font that is used in the file is not installed on either the Client or the Server Macintosh. The results in your printed output vary depending on the application you are using.

- QuarkXPress—Prints low-resolution bitmaps of missing fonts.
- Macromedia FreeHand—First line of type is substituted with Courier; the rest of the lines of type print as bitmaps. (Or, TimesRoman is substituted for first line of type, and the rest of the text is not printed.)
- Adobe Illustrator—Prints all type in TimesRoman.
- Adobe Photoshop—Prints bitmaps of missing fonts.
- Adobe PageMaker—The job is errored back into the queue.

To solve this problem, install the missing fonts on the Client machine. The fonts will then download to the server and print correctly.

Printing DCS Files

The Splash Separations print feature allows you to print proofs from DCS (Desktop Color Separation) files. To print a high-resolution proof of a DCS file activate the separations feature within your application and in the Splash driver print options dialog box (see page 42 for instructions).

Printing Documents That Use Patterned Fills

When you print a document that includes patterned fills from Aldus Persuasion, Adobe Illustrator, or MacroMedia FreeHand, select the LaserWriter 8 driver in the Chooser with the appropriate Splash PPD before you print the document.

Printing Gradient Fills

Documents that contain radial fills require extra time for Splash to process and print.

Printing A4 and Letter Bleed on Oversize Stock

If you attempt to print a full-bleed page using automatic or direct tray selection, this option will be ignored and you will be prompted to insert the paper in the Bypass Tray. For applications that can output crop marks and/or registration marks (such as QuarkXPress, PageMaker and FreeHand), the document must be printed with crop marks and registration marks off.

For applications such as PageMaker that provide a “center on imageable area” option, make sure this option is enabled for correct output.

In applications such as QuarkXPress or PageMaker that allow you to set a page size independent of the paper size selected for printing, use the standard Letter or A4 page size and set the margins to 0. Then, when printing, select the full-bleed page size. For other applications, select the full-bleed size in the page setup dialogue, as normal.

Notes for Specific Applications

Adobe Illustrator Notes

Each time you launch Adobe Illustrator you must select a page size in the Page Setup dialog box.

In grayscale, Adobe Illustrator prints 400 dpi for all sizes (up to A3), for all models of Splash.

The Paths command contains the setting for output device resolution. Splash is a 400 dpi device. Be sure to check the “Use printer's default screen” check box. This will eliminate any problems with blends printing incorrectly.

Both the Page Setup and Print dialog boxes are similar to Apple's standard dialog boxes. There are no unusual print options in either of these boxes. Simply select the proper page size and orientation. All Printer Effects should be disabled.

Printing Separations From Adobe Illustrator

To print a separations document created with Adobe Illustrator, first save the document as an EPS file in Adobe Illustrator, then import the EPS file into QuarkXPress, Adobe PageMaker, Macromedia FreeHand (versions 3.1 and 5.0 only), or Deneba Canvas to print the separations document to Splash.

Note: Before you attempt to print an Adobe Illustrator separations document from Macromedia FreeHand 5.0, start the Macromedia FreeHand 5.0 application, choose Preferences from the File menu, then choose "Importing Exporting" in the pop-up menu in the Preferences dialog box. Make sure the "Convert Editable EPS when placed" option is checked.

Adobe Photoshop Notes

For the fastest and most accurate color correction when printing RGB or CMYK files from Adobe Photoshop, enable Splash RGB/CMYK color correction.

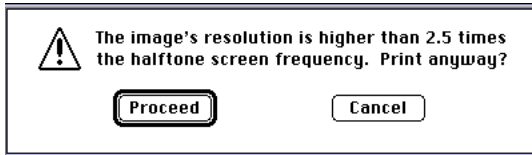
Splash provides color separation tables that work with the Adobe Photoshop Separation Tables feature. See "Adobe Photoshop Color Separation Tables for Splash" on page 52. The tables convert RGB images into separations for a printing press. (**Note:** These separation tables produce the same results as when you use Splash RGB color correction to create press separations.)

Adobe Photoshop is a powerful image editing application. There are many preferences in Adobe Photoshop that need to be set before you print with color correction. These settings will affect the color quality of the output. For best results these preferences should accurately reflect the workstation environment in which the color work is performed.

Provide information about your computer's monitor with the Adobe Photoshop Monitor Setup command. This will affect not only what you see on the screen, but what is sent to the printer. Consult the *Adobe Photoshop User's Manual* for detailed instructions on monitor setup. In addition to the monitor setup, there are two preference settings for "Printing Inks" and "Separation Setup." These settings are used when you convert an image to CMYK, and when you work with CMYK images. These settings should reflect the type of separation in use.

Print Dialog Box Notes

When you choose Print from the file menu to print your job, Photoshop may display the following message:



Ignore this message. Press the proceed key to display the Print dialog box. To prevent this message from displaying, choose Page Setup in the File menu in Adobe Photoshop, then click the Screens button. Make sure the “Use Printer’s Default Screen” checkbox is checked, then click OK.

Two items in the Adobe Photoshop Print dialog box may affect the color quality of the output.

- Encoding: Select “Binary.” Binary encoding is faster than ASCII.
- Print in: If the file is an RGB file, the option will be given to print in CMYK. Selecting CMYK will let Photoshop convert the file to CMYK before it is printed. It will use whatever settings are loaded into the Separation settings dialog box. If the file is already in CMYK, this option will not be available.

Save as TIFF and Adobe Photoshop 3.0

When you use the Splash Save as TIFF option with a long-edge feed paper orientation selected (LetterL, A4L, B5L, and so on), the page appears rotated when the TIFF is opened in Adobe Photoshop. This does not occur when short-edge feed paper orientations are used with Save as TIFF.

FreeHand Notes

When you use FreeHand, the paper size in the document setup, page setup, and print setup must all match. Use the Document Setup command to make sure the image is not off the page. If it appears off the page on screen, it will print off the page on the printer/copier. To change the print size and orientation, click the Change button in the print window.

FreeHand 4.0

There are several options available to the user in the FreeHand Print Dialog box. These are similar to features in other publishing applications, and a detailed description can be found in the FreeHand User's Guide.

“Print as:” selects printing a job as a composite file, or as color separations. When printing to Splash, select “Composite File.”

The window at the bottom of the Print dialog box describes the current printer setting—determined by the currently selected PPD. Click the Print... button at the bottom left to change the printer settings.

Click the Select PPD... button to change the information. The “Open PPD” dialog appears. Select the Splash PPD for your model of printer/copier, then click OK.

Once the Splash PPD is selected, the correct page sizes become available. Select the appropriate page size from the menu. Click “OK” to close the window.

In the Print dialog box, select “Output Options...”. Be sure “Convert RGB Tiff to CMYK” is unchecked. This will produce results inferior to Splash color correction.

FreeHand 3.1 Notes

To change the printer type from the currently selected Apple LaserWriter, click and hold down the pop-up menu titled “Printer Type.” A list of installed PPDs displays. Select the appropriate Splash PPD for your model of printer/copier and release the mouse button. If the Splash PPDs do not appear, consult the *Splash Set-Up Manual* or *Splash Install Manual* for information on installing the PPDs. Once the Splash PPD is the selected printer type, the proper paper size should be selected.

Optimized Screen

The “Optimized Screen” pop-up menu in the Print dialog box refers to the screen resolution of the output device. While this does not affect the output quality of images on Splash, it will affect the quality of blends created in FreeHand. For best results, use a resolution of 400 and a screen ruling of 200.

Adobe PageMaker Notes

Splash Print Options Not Available for Early Versions of PageMaker

Adobe PageMaker application versions prior to v6.0 cannot apply Splash print options (such as color correction) to documents when you print to Splash. Adobe PageMaker 6.0 supports all Splash print features.

Index

A

Adobe Illustrator 43, 63, 64

Adobe PageMaker

- auto page select 28
- bitmapped fonts 63
- separations 43

Adobe Persuasion 64

Adobe Photoshop

- bitmapped fonts 63
- color separation tables 52
- notes 65

Adobe Separator 43

Automatic Grayscale Detection 13, 14, 46

Automatic tray selection 38

AutoSelect 28

B

Background printing 16

Bitmapped fonts 63

Bypass Tray 38

C

Canceling a print job 54, 58

Canvas, separations 43

Chooser

- selecting the LaserWriter 8 driver 15
- selecting the Splash driver 16

Choosing color correction 36

Client Macintosh software installation 9

CMYK Press color correction 37

CMYK/RGB mixed color files 49

Collate options 40

Color Central Lite 14

Color correction 15, 36, 49

Color Model 14

Color options 35

Color printing 35

Color separation tables for Adobe Photoshop 52

ColorCal 50

ColorSync color matching 30

ColorSync profiles for Splash 52

Contone printing option 35

Cover page

- option 22
- printing 22
- with separations printing 43

Custom color correction 37

D

DCS files, printing 43, 63

Deleting a print job 54, 58

Drop folder 48

E

EFICOLOR interferes with Splash color correction 50

Enable Separations 43

Enhanced color correction 37

Enlarging the printed image 20

Euroscale color correction 37

F

Flip Horizontal/Vertical 21

Font substitution 21

Fonts

- bitmapped 63
- for printing 13

FreeHand

- bitmapped fonts 63
- notes 66
- patterned fills 64
- separations 43

Full bleed printing 64

G

Gamma options 36

Graphics rendering style 36

Graphics smoothing 21

Graphics, printing 13

Grayscale detection 13, 14, 46

Grayscale printing 35, 46

H

Heavy weight paper 38

Hold status for a print job 54, 58

I

ICC color profiles 52

Installing Macintosh Client driver 9

Invert image 21

L

Landscape orientation 19

Larger print area 21

LaserWriter 8 driver

- choosing 15
- multiple tray feature 28
- Splash print options 27

Layout 31

LEF paper options 13

LEF vs. SEF paper sizes 19

M

Macintosh Client driver installation 9

Manual feed tray 38

Margins, printer 20

Memory requirement (RAM) 7

More Blue whitepoint option 36

More Yellow whitepoint option 36

N

Network Install folder 10
Networking hardware and software 7

O

Orientation, choosing 19
Original Image Type 44
Oversize transparency 38

P

Page ranges, printing 22, 28
Page Setup options 18
Page Setup, LaserWriter 8 25
Paper size
 LaserWriter 8 driver 25
 Splash driver 19
Paper Source 28
Pass Through profile 52
Patterned fills in documents 64
Photographic originals 44
Photographic rendering style 36
Portrait orientation 19
PostScript color matching 31
PostScript file, printing 48
PPD 14
Precision bitmap alignment 21

Print job priority 54, 58
Printer effects 21
Printer margins 20
Printing
 cover page 22
 large graphics 13

Q

QuarkXPress
 and Splash color correction 50
 bitmapped fonts 63
 separations 43

R

RAM requirement 7
Reducing the printed image 20
Required hardware and software 7
RGB color correction 35
RGB/CMYK mixed color files 49

S

Save as TIFF 47
Save Spool File 23, 42
Screened printing option 35
Separations
 print option 43
 with cover page 43
Sorter options 40

Special Heavy Paper 39

Splash color options 35

Splash ColorCal 50

Splash driver, choosing 16

Splash Macintosh Client driver
installing 9

Splash Network Install folder 10

Stacker options 40

SWOP color correction 37

System requirements 7

T

Text smoothing 21

Text/Graphics/Line Art originals 44

TIFF, save print job as 47

Transparency Interleave 38

U

Unlimited downloadable fonts 21, 27

Unprintable Files folder 48

V

Visual Standard pass through profile 52

W

Whitepoint options 36