

Printing to Splash From Windows NT

July 4, 1997

Splash Technology, Inc.
Sunnyvale, California USA

Trademarks and Copyright

Splash and the Splash logo are trademarks of Splash Technology, Inc. Windows is a registered trademark and Windows NT is a trademark of Microsoft Corporation, MajestiK and Regal and DocuColor are trademarks of Xerox, Incorporated. Acolor is a trademark of Fuji Xerox, Inc. AppleTalk is a registered trademark of Apple Computer, Inc. Novell NetWare is a trademark of Novell, Inc. Adobe, the Adobe logo, Adobe Illustrator, PostScript, Adobe PStool, Adobe Type Manager, Adobe PageMaker and Adobe Photoshop are trademarks of Adobe Systems Incorporated, which may be registered in certain jurisdictions. QuarkXPress is a registered trademark of Quark, Inc. All other brand or product names are trademarks of their respective holders.

Copyright © 1997 Splash Technology, Inc.

PN: 0014120-0102 Last revised: July 4, 1997. Your rights of ownership are subject to the limitations and restrictions imposed by the copyright laws as outlined below.

PROPRIETARY RIGHTS NOTICE. The digitally encoded machine readable outline data for producing the typefaces provided as part of your laser printer is copyrighted © 1981 Linotype-Hell AG. Copyright © 1993 Adobe System Incorporated. All Rights Reserved. This data is the property of Linotype-Hell AG and Adobe Systems Incorporated and may not be reproduced, used, displayed, modified, disclosed or transferred without the express written approval of Linotype-Hell AG and Adobe Systems Incorporated.

It is against the law to copy, reproduce, or transmit including, without limitation, electronic transmission over any network any part of the manual or program except as permitted by the Copyright Act of the United States, Title 17, United States Code. Under the law, copying includes translation into another language or format. However, you are permitted by law to write the contents of the program into the machine memory of your computer so that the program may be executed. You are also permitted by law to make working copies of the program, solely for your own use, subject to the following restrictions: (1) Working copies must be treated in the same way as the original copy; (2) If you ever sell, lend, or give away the original copy of the program, all working copies must also be sold, lent, or given to the same person, or destroyed; (3) No copy (original or working) may be used while any other copy (original or working) is in use except within the terms of this license. The copyright notice that is on the original copy of the program must accompany any working copies of the program.

The above is not an inclusive statement of the restrictions imposed on you under the Copyright Act. For a complete statement of the restrictions imposed on you under the copyright laws of the United States of America, see Title 17, United States Code.

Table of Contents

Introduction	5
System Requirements	5
Chapter 1 — Setting Up For Printing to Splash	7
Connecting Your Computer to the Splash Printer	7
Set Up for Printing to a Splash Print Spooler	8
Set Up for Printing to Splash Over an AppleTalk Network	11
Enabling the AppleTalk Printer Service	11
Installing the Client Software For Windows NT	15
Installing the QuarkXPress PDF File	23
Chapter 2 — Printing to Splash	25
Setting Splash Print Options	25
Using the Splash Print Options	29
Setting Splash Tray Options	29
Setting Splash Color Options	32
Setting Other Splash Options	36
Creating a PostScript or EPS File	41
Deleting a Print Job	42
Splash Color Correction	43
Splash Color Correction Notes	44
Chapter 3 — Using the Splash Web Queue Manager	45

Chapter 4 — Application Notes	53
Supported Windows NT Applications	53
General Driver Notes	53
Duplicate Cover Pages	53
Some Images Print With Limited Color	53
Accidentally Printing EPS Files	54
Printing Gradient Fills	54
Network Notes	54
Novell NetWare Notes	54
Application Notes	54
Canceling a Print Job	54
QuarkXPress Notes	54
Save as TIFF and Adobe Photoshop 3.0	55
Printing FreeHand for Windows NT Documents	55
Index	57

Introduction

The Splash™ Windows NT Client software allows a PC running Microsoft® Windows NT (version 4.0 or later) to print to a Splash MajestiK™, Acolor™, DocuColor™ 5750, DocuColor 5799, or Regal™ printer/copier. The driver software lets your Windows™ applications communicate across an appropriate network with a Splash Server. The Splash Server then processes your print jobs and sends them to the printer/copier. Thus, you can develop documents with Windows-based applications and then print your work on the Splash printer/copier.

This on-line manual describes how to install and use the Splash Client software with Windows NT. If you are not already familiar with Windows NT procedures and conventions, please refer to your Microsoft documentation before you attempt to print to Splash.

System Requirements

The Splash Windows Client driver requires the following hardware and software:

- An IBM AT or PS/2 (or 100%-compatible) computer with an 80486 or higher processor
- One 3.5" floppy disk drive, high-density (1.4MB) capacity
- Hard disk drive
- At least 16 MB of RAM
- Microsoft Windows NT version 4.0 or later
- Network hardware that works with the built-in Windows NT drivers to connect your PC to the Splash print queue on the Novell or NT server

Refer to the Windows NT documentation for a description of compatible hardware.

Chapter 1

Setting Up For Printing to Splash

This chapter explains how to connect your PC to the Splash printer/copier and how to install the Splash Windows NT client software.

Connecting Your Computer to the Splash Printer

Before you can install the Splash Windows NT Client software, you must establish a network connection to the Splash printer. There are several options for setting up your Windows NT PC for printing to Splash. You can:

- Connect to another Windows NT computer on your network that has been set up as a print spooler for Splash,
- Connect to a Novell NetWare print spooler that has been configured for printing to Splash,
- Configure your Windows NT system for direct printing to Splash over an AppleTalk network, or
- Configure your Windows NT system for direct LPR printing to Splash over a TCP/IP network.

This chapter describes how to set up for printing through a Windows NT or Novell NetWare print spooler that has been configured for printing to Splash. If no print spooler is available, this chapter describes also how to set up for printing to Splash over an AppleTalk network. The instructions provided in this chapter apply to both Windows NT Server and Windows NT Workstation systems.

If your PC can connect to a Novell NetWare server, the system administrator responsible for setting up print spoolers should refer to the appropriate Novell NetWare documentation, and the Splash NetWare Direct documentation for instructions on how to set up a Novell print queue for Splash. Refer to the chapter, "Setting Up TCP/IP and NetWare Direct Printing to Splash," in the *Splash Reference* on-line manual.

If your PC is connected to a TCP/IP network, the system administrator should refer to the chapter “Setting Up TCP/IP and Netware Direct Printing to Splash” in the *Splash Reference* on-line manual for instructions on how to set up the Splash Server to receive LPR print jobs. This Reference manual chapter includes also instructions on how to set up Windows NT for LPR printing to Splash.

Set Up for Printing to a Splash Print Spooler

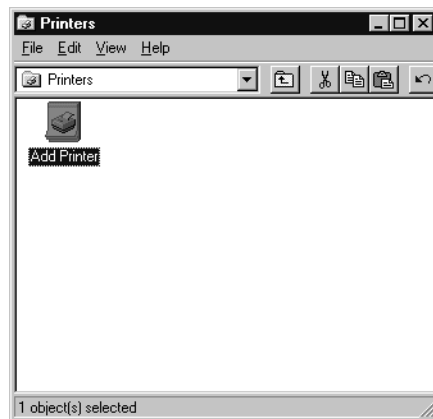
This procedure describes how to connect to a Windows NT or Novell NetWare print spooler that is set up for printing to Splash. All software needed to print to Splash is automatically transferred to your computer when you connect to the print spooler with the Windows NT Add Printer Wizard. You do not need the *Splash W/n NT Client* floppy disk for this procedure.

If a Splash print spooler is not available on your network, go to the section “Set Up for Printing to Splash Over an AppleTalk Network” on page 11.

Exit any applications that you will use to print to Splash before you begin the set up procedure.

To set up your Windows NT PC for printing to Splash:

1. Start Windows NT.
2. Click the Start button, point to Settings, then choose Printers. The Printers control panel appears.



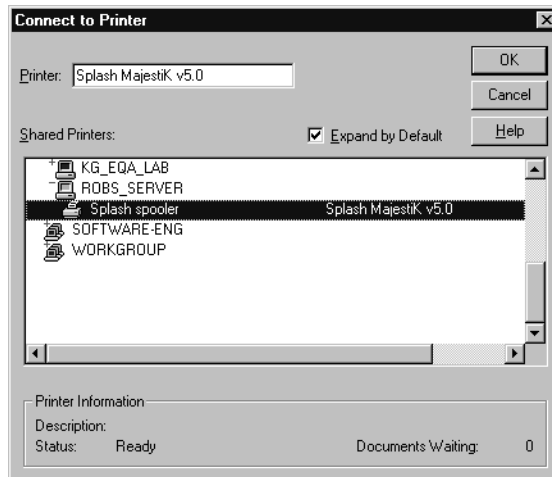
3. Double-click Add Printer.

The Windows NT Add Printer Wizard appears.



4. Select Network printer server to tell Windows NT that the Splash printer is connected to your computer over a network, then click Next.

Windows NT displays a list of devices on your network.



5. Locate the Splash print spooler and select it in the Shared Printers list.

6. Click OK to continue.



7. Select “Yes” if you want the Splash printer/copier to be the default printer for your computer. Click Next to continue.



8. Click Finish to complete printer setup. The Splash printer appears in the Printer control panel.

Setup for the Splash print spooler is complete. The Splash client software was automatically installed on your computer during printer setup. Go to the next chapter of this manual to learn about the print features available with Splash.

Set Up for Printing to Splash Over an AppleTalk Network

If a Splash print spooler is not available on your network, you must install the Splash Windows NT client software on your computer. All software needed to print to a printer on an AppleTalk network is provided with Windows NT. No AppleTalk bridge software is needed.

To install the Windows NT Client software, use the *Splash Win NT Client* floppy disk provided with the Splash Server. Before you install the Splash Windows NT client software, make a backup copy of the installation disk. Use the backup disk to perform the installation.

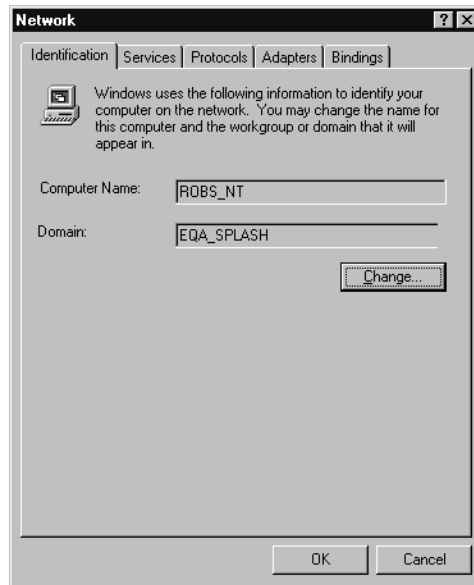
You will need also the Windows NT system CD-ROM to complete the set up procedure.

Enabling the AppleTalk Printer Service

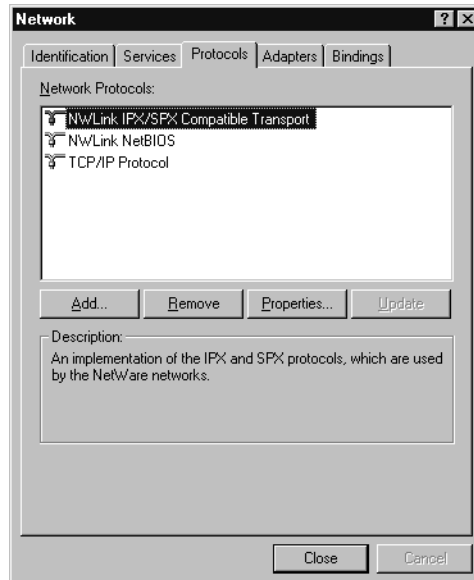
If your PC is running Windows NT Server, the Microsoft AppleTalk printer service is enabled when you install Windows NT. You can skip this part of the install procedure and go on to the next section, "Installing the Client Software For Windows NT" on page 15. If your PC is running Windows NT Workstation, you must enable the Microsoft AppleTalk Printer Service before you can proceed with the Splash Client software install.

To enable the AppleTalk Printer Service:

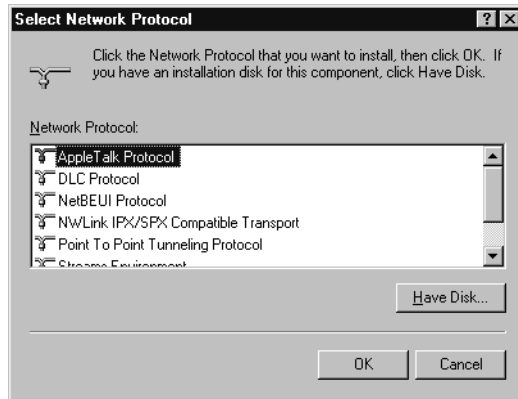
1. Click the Start button, point to Settings, then choose Control Panels.
2. Double-click the Network control panel to open it.



3. Click the Protocols tab.

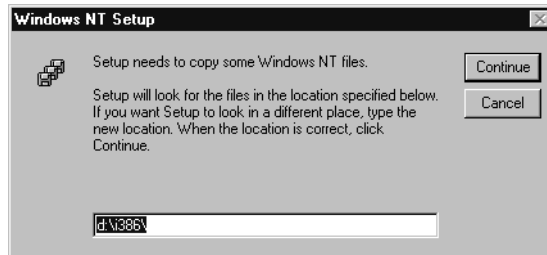


- Click Add. Windows NT displays a list of network communications protocols you can add to your system.



- Select "AppleTalk Protocol" in the Network Protocol list, then click OK.

Windows NT asks you to insert the Windows NT system CD-ROM in your computer's CD-ROM drive.

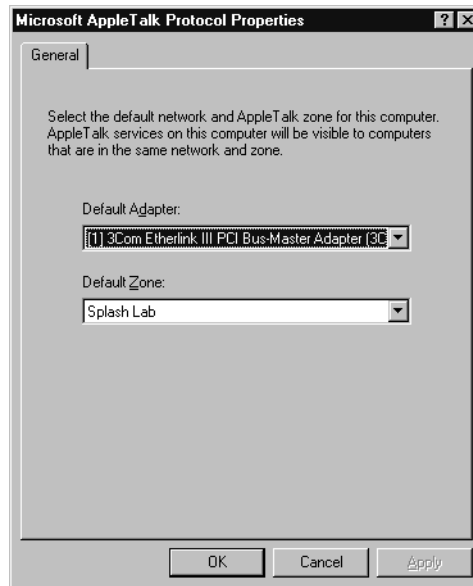


- Insert the Windows NT system CD-ROM in your computer's CD-ROM drive, enter the drive letter and path for the CD-ROM drive, then click Continue.

Another Windows NT message appears.

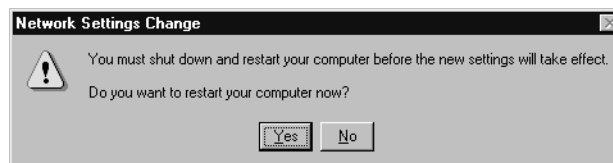


7. Click OK.



8. Select the network adapter type used by your computer to connect to the network, select the network zone where your computer and the Splash printer are located, then click OK.

A message appears.



9. Click Yes. Windows NT restarts.

When Windows NT restarts, AppleTalk printer service is enabled for your PC. You can now install the Splash client software for Windows NT and connect to the Splash Server.

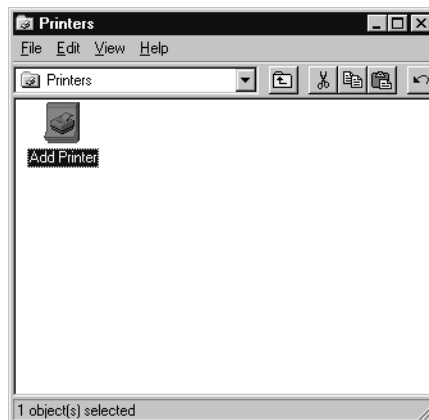
Installing the Client Software For Windows NT

To install the Windows NT Client software, use the *Splash Win NT Client* floppy disk provided with the Splash Server. Before you install the Splash Windows NT Client driver, make a backup copy of the installation disk. Use the backup disk to do the installation.

Exit any applications that you will use to print to Splash before you begin the set up procedure.

To install the Splash Windows NT Client driver on a system running Windows NT:

1. Locate the *Splash Win NT Client* floppy disk (provided with Splash).
2. Start Windows NT.
3. Click the Start button, point to Settings, and then choose Printers. The Printers setup window appears.



4. Double-click Add Printer. The Windows NT Add Printer Wizard appears.

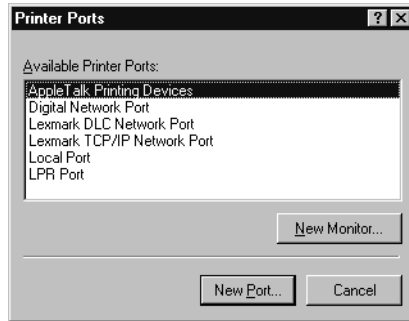


5. Select “My Computer” then click Next to continue the installation process.

The Add Printer Wizard asks you to select the port for your printer.



6. Click Add Port. A list of printer ports you can add appears.



7. Select AppleTalk Printing Devices from the Available Printer Ports list, then click New Port.



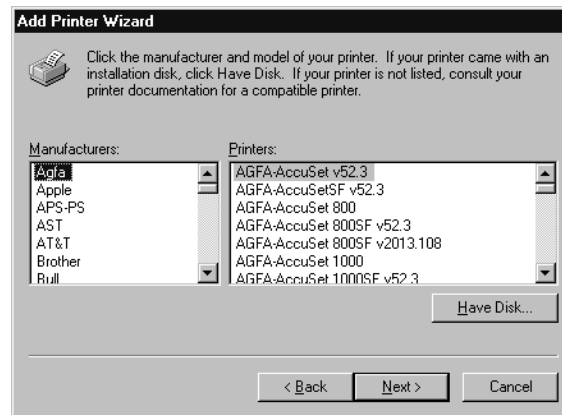
8. Locate the Splash Server in the list of AppleTalk Printing Devices, select the Splash Server, then click OK.

The Splash Server appears in the list of Available ports in the Add Printer Wizard.

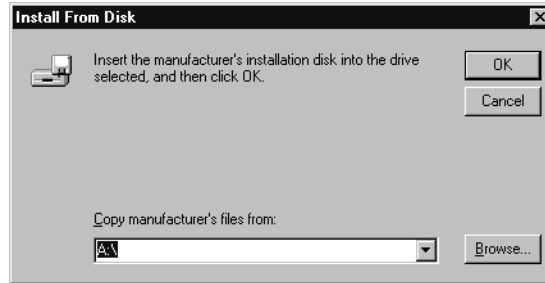


9. Be sure the Splash Server is selected in the Available ports list, then click Next to continue.

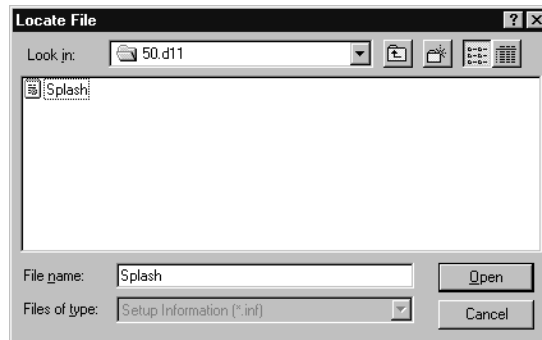
The Add Printer Wizard asks you to select the manufacturer and model for your printer.



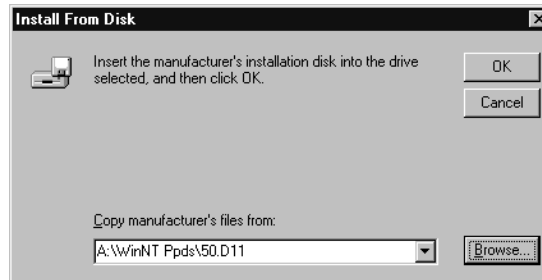
10. Click Have Disk.



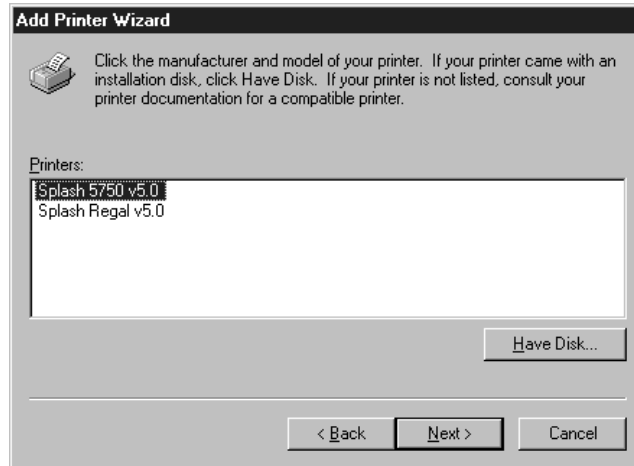
11. Insert the *Splash Win NT Client* disk in the computer's floppy drive, then click Browse.



12. Open the Windows NT directory, select the file "Splash" then click Open.



13. Click OK. Windows NT asks you to select the model of your Splash printer.

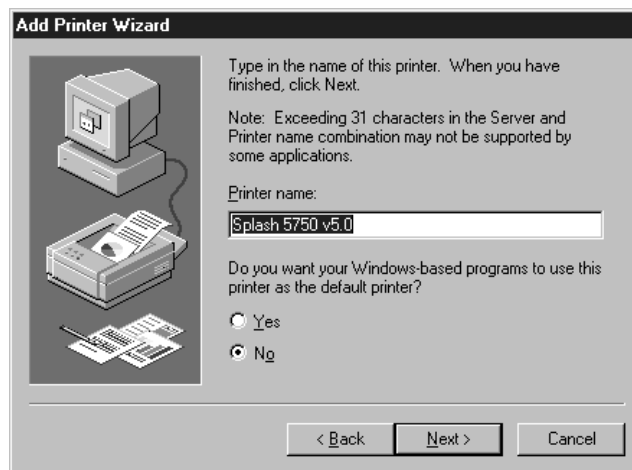


14. Select the model of your Xerox or Fuji Xerox printer/copier from the Printers list. The options are:

- **Splash Regal v5.0** is for the Regal or Acolor 930 series and MajestiK and Acolor 630 series printer/copiers
- **Splash 5799 v5.0** is for the DocuColor 5799 series printer/copiers
- **Splash 5750 v5.0** is for the Acolor 620 and DocuColor 5750 series printer/copiers

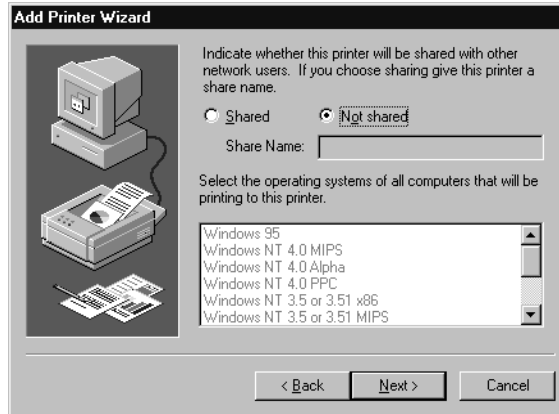
15. Click Next to continue with printer setup.

Windows NT displays more options for setting up the Splash printer.



- If you want to change the name for the Splash printer/copier, type a new name in the text box. (The name you enter becomes the name of the printer as it appears in your applications and in the Printer control panel.)
- If you want the Splash printer/copier to be the default printer for your computer, choose Yes. Otherwise, choose No.

16. Click Next to continue.



17. Choose Shared to allow other Windows NT and Windows 95 clients located in the same network zone to connect to this print queue for printing to Splash. If you do not choose Shared, only this computer will be able to print to Splash.

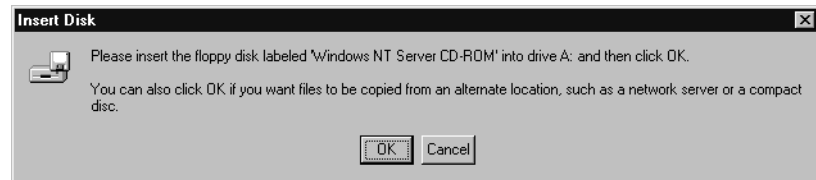
If you choose Shared, select the operating systems for all computers that will use the print queue from the list.

18. Click Next.

Windows NT asks you to insert system software disks for the operating systems you selected in the previous step. Insert the floppy disks or CD-ROMs and click OK as directed by the Add Printer Wizard. When all files are copied, the Add Printer Wizard asks if you want to print a test page.



19. Click Yes to print a test page then click Finish.



20. Click OK, insert the Windows NT system software CD-ROM in your computer's CD-ROM drive then click OK.

Windows NT copies the files needed to set up the print queue. A test page prints at the printer/copier to confirm that setup was successful.

21. Click Yes. The Splash printer appears in the Printers control panel.

Setup for printing to the Splash Server is complete.

Installing the QuarkXPress PDF File

If you use QuarkXPress[®], you must install an additional printer description files on your hard disk to use Splash printing features with this application. Use the Windows NT Explorer (or other file management utility) to drag the appropriate printer description files from the *Splash Win NT Client* floppy disk to your PC. (See the documentation provided with Windows NT for information on how to copy files with Windows NT Explorer.)

The Quark subdirectory contains PDF files for QuarkXPress:

- **SPREGA50.PDF** is for the Regal or Acolor 930 series and MajestiK and Acolor 630 series printer/copiers
- **SP579950.PDF** is for the DocuColor 5799 printer/copier
- **SP575050.PDF** is for the Acolor 620 and DocuColor 5750 series printer/copiers

Copy the appropriate PDF file for your model of Splash printer/copier from the Quark subdirectory to the pdf directory in your QuarkXPress directory (**c:\xpress\pdf** for example).

Chapter 2

Printing to Splash

After you install the Splash Windows NT software and connect to the Splash Server, you are ready to print. This chapter describes how to customize print options for your files, and how to print to the Splash Server. This chapter also explains how to print your documents as PostScript or EPS (Encapsulated PostScript) files.

Setting Splash Print Options

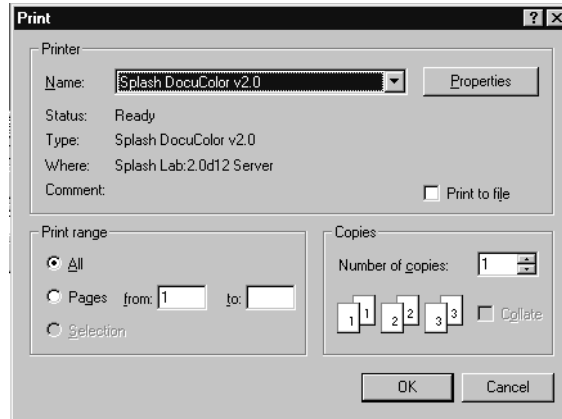
Before you print a document to Splash, select print options such as paper size and orientation, color correction, scaling and number of copies to print. This section describes how to set Splash print options with the “Print” command provided by your applications.

Many applications provide a “Printer Setup” or “Page Setup” command that lets you set Splash print options from your application. See the manual for your application for information.

Note: The Page Setup and Print dialog boxes in your applications may appear somewhat different from those that appear in this manual. See the manual for your application for information about print options that are not described in this chapter.

To set Splash options when you print a file:

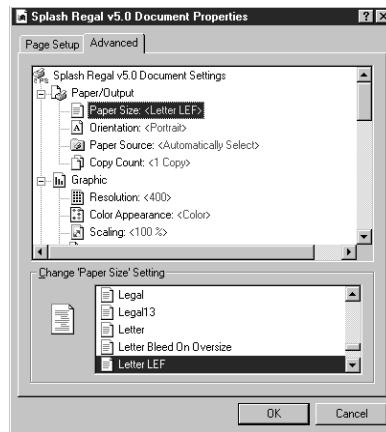
1. When you are ready to print a file, choose Print from the File menu in your application. The Print options appear.



The Print dialog box for your application may be simple, or it may contain many extra options for the special features of your application. Adobe Illustrator, for example, has a very simple Print dialog box. The Print dialog box for QuarkXPress has many print options.

2. Enter the number of copies to print.
3. Select “All” to print all pages of your document, or enter a range of pages to print and select “Pages.”
4. Click Properties.

5. In the Properties dialog box, click the **Advanced** tab. The Splash Document Settings appear.



Note: This manual describes how to select options that are specific to the Splash printer/copier. Windows NT provides other page setup and print options that you can use when you print. Refer to the Windows NT On-line Help for information about how to use other print options that appear.

6. Select a paper size from the **Paper Size** list. If you select an option other than “Auto Tray Select,” be sure the correct paper is installed in the tray you select in Step 8.

IMPORTANT: *The Paper Size list for Windows NT applications always includes some paper sizes that are not supported by the Splash Server. Refer to the **Splash PCI v5.0 Reference** manual for a list of supported paper sizes for printing to Splash.*

The paper sizes 12x18, A6, 4x6, B5SEF, and B5LEF print only to the bypass tray.

When a paper size has an LEF-suffix (Letter LEF, for example), the paper is loaded with the long edge of the sheet feeding from the tray. When a paper size has an SEF suffix (such as A4 SEF), the paper is loaded with the short edge of the sheet feeding from the tray.

Note: Paper sizes that do not have an “SEF” or “LEF” suffix are handled as short edge feed (SEF) paper by the printer/copier.

The Splash servers print all supported paper sizes and orientations at 400dpi in both directions.

7. Under **Orientation**, select Portrait, Landscape, or Rotated.

If you print to a MajestiK, Regal, DocuColor 5799, or Acolor 630 series or 930 series printer/copier, the edge that feeds into the printer has a margin of 9 mm; the other edges have a 4 mm margin. If you print to an Acolor 620 or DocuColor 5750 printer/copier, the edge that feeds into the printer has a margin of 6 mm; the other edges have a 4 mm margin.

Note: Both “LEF” and “SEF” paper sizes can use any paper orientation.

8. Select a default paper tray from the **Paper Source** list.

If you select Auto Select or Automatically Select, the printer automatically selects a tray based on the page size of the document. You must choose Bypass Tray to use the manual feed option on the printer/copier.

Note: Some applications let you print page one of your document from one paper tray, and all remaining pages from another paper tray. This feature does not work when you print to the Splash Server. All pages will print from the paper tray you selected for page one.

Note: For all applications except Adobe PageMaker 6, the paper source menu contains both an Auto Select and an Automatically Select option. Select either option to activate the AutoSelect feature.

IMPORTANT: *If Tray 4 is selected and the printer/copier does not support a 4th paper tray, the print job is handled by the Automatic tray selection feature. Tray 4 is an option with the Acolor 620 and DocuColor 5750 printer/copier.*

9. Enter the number of copies to print.
10. Scroll down the Advanced options list to select the Splash print options.
See “Using the Splash Print Options” on page 29 for complete descriptions of the Splash print options that appear in the Advanced tab.
11. When you have made all selections for printing, choose OK.
12. Click OK in the Print dialog box to send the print job to the Splash Server.

Using the Splash Print Options

This section describes how to use the special print features of the Splash color print server. This options are listed under Printer Features in the Properties dialog box.

Setting Splash Tray Options

These options let you specify the type of paper loaded in the bypass tray, and tells the printer/copier how to sort or collate the printed job.

Bypass Tray Options

To use the bypass tray, you must select “Bypass Tray” in the Paper tab in the Printers Properties dialog box (see page 28), then specify the type of paper loaded in the bypass tray in the Device tab.

- Select **Normal (Paper or Transparency)** to print on recommended paper between 16 to 24 pound or 60 to 105 gsm Xerox transparencies with a white leading edge. For information on recommended transparencies, refer to the manuals supplied with your printer/copier.
- Select **Heavy Weight Paper** to print on paper that is heavier than 24 pound or 105 gsm. See the manuals supplied with your printer/copier for information on recommended heavyweight paper.
- Select **Transparency Interleave** to have the printer insert blank sheets of paper between printed transparencies. For transparency interleave, you must have a paper size that matches the transparency film size installed in a cassette. If no matching paper size is installed, the transparencies are printed without separating sheets.
- Select **Oversize Transparency** to print transparencies larger than A4 (such as A3 or 11 x 17). This option is for use with the Acolor 930 series, Regal, DocuColor 5799, Acolor 620 series, or DocuColor 5750 printer/copier models. The Normal (Paper or Transparency) option does not work with oversized transparencies.

IMPORTANT: *You cannot use oversize (larger than A4 or Letter) transparencies with the MajestiK and Acolor 630 series copier/printers. Attempting to do so will result in a paper jam or damage to the printer/copier. However, the Oversize Transparency option works with supported transparencies (A4 and Letter) for these printer/copier models. This option produces the same results as the Normal (Paper or Transparency) option.*

The following Bypass Tray options can be used when the Splash Server is used with an Acolor 620 or DocuColor 5750 series printer/copier:

- **Special Heavy Paper**
- **Coated Paper**
- **Single Step Transfer**
- **Labels**

See the manuals supplied with your printer/copier for information on recommended paper types for these Bypass Tray options.

The following Bypass Tray option can be used when the Splash Server is used with an Acolor 620, DocuColor 5750, or DocuColor 5799 series printer/copier:

- **Tack Film.** The paper sizes supported for this Bypass Tray option are Letter and A4 only. See the manuals supplied with your printer/copier for information on recommended paper.

When you insert paper or transparencies into the Bypass tray, the printer/copier defaults to its Paper Type (Bypass) mode. Push the yellow Clear All button on the printer/copier after you insert the paper or transparencies to return immediately to the print mode.

Use Sorter

If the optional sorter is attached to the printer/copier, select “Yes” in the **Use Sorter** menu to put all copies of page 1 into bin 1, page 2 into bin 2, and so on. When this option is disabled, Splash stacks all output pages on top of each other in the bin on the top of the copier.

Collate

Select “Yes” in the **Collate** menu to print all pages of copy 1, then all pages of copy 2, and so on. When **Use Sorter** is enabled also, Splash sends each copy of a job to a different bin (copy 1 of pages 1-n go into bin 1, copy 2 into bin 2, and so on). When Use Sorter is disabled, Splash sends all copies on top of each other in the bin on the top of the copier.

When you use the sorter:

- Do not attempt to print more collated copies than there are bins. If more than 20 copies are selected, 20 copies print and the job is returned to the queue with an error message.
- For the Acolor 620 and DocuColor 5750, do not attempt to print more than 10 copies or more than 50 pages per copy when you print collated jobs to the sorter. For the MajestiK, Regal, DocuColor 5799, and Acolor 630/930 series printer/copiers, do not attempt to print more than 20 copies or more than 50 pages per copy when you print collated jobs to the sorter.
- For the MajestiK, Regal, DocuColor 5799, and Acolor 630/930 series printer/copiers, do not attempt to print more than 20 copies or more than 50 pages per copy when you print uncollated jobs to the sorter. This capability is not available for the Acolor 620 or DocuColor 5750.
- If multiple successive jobs need to use the sorter, the pages from the first job must be cleared before the second job can print. An error dialog appears, and the printer/copier waits until the bins are cleared. If the bins are not cleared within 5 minutes, the job errors back into the queue.

IMPORTANT: *Be sure to disable the “collate” option in your applications before you print to Splash. Some applications provide a collate option that appears in the Print dialog box. Many applications activate the collate option as a default setting, so you must be sure to uncheck this option in the Print dialog box before you print. If the collate option in your application is activated (checked) it usually interferes with the Splash sorter feature and results in all pages of your document being placed in a single tray by the printer/copier.*

Reverse Page Order

Select “Yes” in the **Reverse Page Order** menu to print jobs starting with the last page of the document. Collated documents that are sent to the top bin of the copier end up face-up with page one on top.

Note the following when you use the Splash Reverse Page Order option:

- If your application provides reverse order printing (sometimes called “reverse order” or “back-to-front” printing), select the application’s option instead of the Splash print driver option.
- If a sorter is connected to the copier, and you want to print multiple collated copies, use the sorter. (For a MajestiK, Regal, DocuColor 5799, or Acolor 63x/93x copier, if more than 20 copies are needed, rerun the print job in batches of 20. For a DocuColor 5750 or Acolor 620 copier, if more than 10 copies are needed, rerun the print job in batches of 10.)
- Do not select Reverse Page Order for a separations print job.
- Print jobs with Reverse Page Order selected do not use the Splash RIP While Receive feature.

Setting Splash Color Options

The Splash color options let you set up the printer/copier for four-pass color printing or grayscale printing, with contone or halftone screening. You also can apply Splash color correction to your print jobs.

Color Model

Select **Color (4 pass)** or **Grayscale (1 pass)** printing as a Color Model for your output. Grayscale images produce similar results with either mode; however, images process and print significantly faster in Grayscale mode than in Color mode.

Printer Mode

This option switches printer output between **Contone** (full color) output and **Screened** output. When screened is selected, Splash applies halftone screening to the color image. In certain circumstances (such as documents composed primarily of large areas of saturated color) halftone screening produces better results in the printed output.

The screening method used when “Screened” is selected is configured at the Splash Server. The default screening method is stochastic. See the *Splash PCI Series 5.0 Set Up Manual* for more information.

RGB Monitor Color Correction

Splash RGB Monitor Color Correction gives you simple-to-use, accurate, and consistent results for:

- Documents with mixed EPS and TIFF file types
- Documents created with “pre-press” applications (such as QuarkXPress) and by non-pre-press applications (such as Microsoft Word)

Splash uses advanced, proprietary techniques to accurately color correct mixed EPS, TIFF, PICT, and other “problem” page layout files that cannot be accurately corrected and printed by other CMS and RIP combinations.

To apply Splash RGB color correction to the print job, select “Enabled” in the **RGB Monitor Color Correction** menu, then select the appropriate RGB options from the Rendering Style, Gamma, and Whitepoint menus.

Rendering Style

Select a **Rendering Style** that describes how the document was created:

- Choose **Graphics** for documents that were created with a computer graphics application. This option is designed to optimize printing of more saturated colors, such as those used in business presentation documents.
- Choose **Photographic** to match the colors of various scanned photographic images. This is the best option to choose for proofing photographic material.

Gamma

The **Gamma** and **Whitepoint** options adjust Splash color correction to simulate the monitor used to view and work with the document. For most purposes, choose **Normal (1.8)** for Gamma, and choose **Normal (D65)** for Whitepoint.

Gamma describes how a device reproduces tonal gradations. This setting applies to both the input device (such as a scanner) and the output device (such as a computer monitor or a printer). You can use this option to lighten or darken the RGB content of a particular document. The Gamma options are:

- Lightest (1.0)
- Light (1.4)
- Normal (1.8)
- Dark (2.2)
- Darkest (2.6)

Whitepoint

The **Gamma** and **Whitepoint** options adjust Splash color correction to simulate the monitor used to view and work with the document. For most purposes, choose **Normal (1.8)** for Gamma, and choose **Normal (D65)** for Whitepoint.

Splash RGB color correction provides three standard whitepoint options. The options simulate various lighting conditions for proofing color documents. This option can be used to adjust the RGB content in a particular document relative to the whitepoint of the monitor. If flesh tones or red tones are too magenta, skies and other blues too cyan, and grass and greens too dark (almost bluish), change the Whitepoint selection from “Normal” to “More Blue.” If flesh tones and reds are too yellow, blues too purple, and greens too yellow, change the Whitepoint setting from “Normal” to “More Yellow.”

The Whitepoint options are:

- More Yellow (D50 Proofing)
- Normal (D65)
- More Blue (9300)

See page 43 for more information about Splash color correction.

CMYK Press Color Correction

To apply Splash CMYK color correction to the print job, select “Enabled” in the **CMYK Press Color Correction** menu, then select the appropriate option from the **Press Profile** menu.

- **SWOP** simulates SWOP inks.
- **Euroscale** simulates Euroscale press inks.
- **Enhanced** prints vivid colors on your output. (This profile is not intended for printing press proofs.)
- **Custom1** through **Custom10** are customizable options set at the Splash Server. Ask your Splash Server administrator about the current settings for these.

See page 43 for more information about Splash color correction.

Composite Spot Colors

Splash can simulate PANTONE, Toyo, or DIC spot colors when you add them to your documents. You must print your documents in composite mode to use this feature.

To print a composite document with simulated spot colors, set the Composite Spot Color type (PANTONE, Toyo, or DIC) in the Splash Server Preferences (see the *Splash PCI Series v5.0 Set-Up Manual* for instructions). Then select “Enable” in the **Composite Spot Colors** menu at the printer driver before you print. Splash produces output that simulates the spot color on a printing press.

Note: This feature supports only 100% (non-tinted) spot colors. For best results, do not mix regular press CMYK colors in the same document with spot colors when you use this feature. (Some press CMYK colors may be interpreted as spot colors.)

Setting Other Splash Options

This section describes other Splash options you can apply to your print jobs.

Spool Options

Splash provides three options for handling the PostScript spool file that is created when you print to Splash:

- **Print and Delete** automatically deletes the spool file after printing the job.
- **Print and Save** saves the spool file after printing. The job is transferred to the Hold queue with the message “*PostScript spool file saved as requested.*”
- **Send and Hold** sends the spool file directly to the Hold queue after it is received by the Splash Server.

Saving the spool file is useful when small quantities of the same file must be printed occasionally. You can change print options for the saved spool file before printing with the Splash Server application. See the *Splash PCI Series v5.0 Set-Up Manual* for information.

Note: Saved spool files remain in the Hold queue until you delete them. To delete a spool file, select it in the Splash Server Hold queue, then press the Delete key.

Separations

Some applications, most notably page layout applications such as PageMaker and QuarkXPress, can produce “separations” as printed output. These are intended to be imaged on film imagesetters and thus each page is converted to one or more (usually four) output grayscale “pages.” If you print separations to a printer that does not have a special separations feature, you will get one grayscale page per color in the original page.

The Splash Server has the ability to re-composite these individual pages back into a single color page to produce a real proof (equivalent to the proof that would be produced from the films via conventional means). The primary benefit of separations is to show overprinted objects with proper colors and to make trapping visible.

The Splash **Separations** print option prints a composite page from applications that support separations printing.

- Select **Automatic** to apply the Splash Separations feature to all your separations print jobs automatically. This default option supports CMYK plates plus any number of plates in PANTONE, Toyo, or DIC (if these press colors are supported by your separations application). This option supports separations generated by any application. When this option is selected Splash supports the full range of PANTONE, Toyo, or DIC colors and tints in your documents.

Note: The Splash Separations feature does not accurately represent traps or overprints composed of a PANTONE, Toyo, or DIC color.

- Select **Disabled** to disable the Splash separations feature for a job.

The remaining separation options, **QuarkXPress Style**, **PageMaker Style**, **FreeHand Style**, and **Canvas Style** use a separations technique from version 4.0 of the Splash PCI Series software. These options require that the separations job be made up of exactly four process-color plates. These options do not support additional PANTONE plates. If problems occur in the output when you print separations with “Automatic” selected, convert the colors in your document to four process plates then select the v1.0 separations option that matches your application.

Separations Notes:

The Splash Separations print feature supports printing of high-resolution DCS (Desktop Color Separation) files. To print a high-resolution proof of a DCS file activate the separations feature within your application and in the Splash driver print options dialog box.

The Separations feature is not compatible with Adobe Separator separation jobs. To use separations with Adobe Illustrator (typically done with Adobe Separator), create an EPS and place it into either a QuarkXPress or PageMaker document.

Do not choose the Cover Page option in your application’s print dialog box when you print a separations job to Splash. The cover page is interpreted as a color plate, which causes unexpected results in the separations job. (This problem does not occur when the Print Cover Page option is active for the Splash Server application.)

For best results, do not use the version 4.0 separation options to files with spot colors. Always choose “Automatic”. If your job reports a PostScript error printing a CMYK-only file (no spot colors) with the “Automatic” separation option, try printing with one of the version 4.0 separation options.

If a separations document contains one or more spot colors, any spot colors that are not known by the system will be printed as black (or grayscale for tints). The job will not error. If the spool file “print and save” option is selected for the job, the spool file at the Splash Server will show the message “Document printed, but unknown spot color: NAME. Run Preflight report for more details.” (NAME is the name of the unknown spot color.)

If you use a v5.0-style CMYK color correction profile with a separations file, any black areas (including those created with CMY inks) will print using mainly black (K) toner. If you want the output to be closer to the original CMYK values for the purpose of retaining trapping, select a v4.0-style CMYK color correction profile for the job.

Original Type

This print option sets printer/copier screening and filtering to optimize output based on the image type.

- Select **Photographic** for photographic originals to optimize the output, using a 200-line screen at 400 dpi. This is the best option to choose for color images.
- Select **Text/Graphics/Line Art** to optimize the output of all other data types, including text and line art, using a 400-line screen.

Note: When “Text/Graphics/Line Art” (400-line screen) is used, even if color correction mode is selected, appropriate colors are not always printed. The colors printed sometimes differ from when “Photographic” is selected. For documents that emphasize the color image, select “Photographic.” For documents that emphasize sharp lines (such as a map), select “Text/Graphics/Line Art.”

Document Mode

Select “Enable” in the **Document Mode** menu to print the document with the Splash Continuous Print feature. This feature dramatically speeds up printing at the copier.

Note: When this feature is selected Splash applies screening to the output to achieve faster print processing. This feature does not allow contone printing. Select this option when speed of printing is the highest priority for your output.

Printing Style

The **Printing Style** option you select determines how the Splash Server processes your print job when Document Mode is selected. For some print jobs, Splash must reduce the quality of images or text to accomplish faster printing at the copier. The Printing Style option lets you decide which element is more important in your final output. Select **Favor Image** (the default setting) to produce the best possible quality for documents with photographic materials and large areas of color. Select **Favor Text** to produce the sharpest-possible text and lines in the final output.

Print Control Strip

When you select “Enable” in the **Print Control Strip** menu, Splash prints a set of color control patches on the edge of the output. This option can be configured to print either color patches or an EPS file or both. See the *Splash PCI Series v5.0 Set-Up Manual* for more information.

Print Progressives

When you select “Enable” in the **Print Progressives** menu, Splash prints up to four separate sheets for the print job. This print option is configured at the Splash Server to specify which color passes print on each sheet. This allows you to examine the result of each color pass for a four-color document. See the *Splash PCI Series v5.0 Set-Up Manual* for more information.

Note: Do not choose the Cover Page option in your application’s print dialog box when you print a progressives job to the Splash Server. The cover page is interpreted as one of the progressives pages, which causes unexpected results in the job. (The problem does not occur when the Print Cover Page option is active for the Splash Server application.)

Note: If you are using progressives to create press proofs, for best results select one of the Splash v4.0-style one-dimensional CMYK Press Color Correction profiles for the print job (see “CMYK Press Color Correction” on page 34). Ask your Splash system administrator for information about the current CMYK profile settings. See the chapter “Calibrating With ColorCal” in the Splash Reference Manual for more information about CMYK Color Correction profiles.

Sharpness

The Sharpness feature lets you enhance or soften the edges of your image when you print. (When you apply a Sharpness setting, no additional processing time is required.) The Sharpness settings are:

- Softest
- Soft
- Normal
- Sharp
- Sharpest

The Sharpness feature is not available with the Acolor 620 or DocuColor 5750 printer/copier.

Auto Grayscale Detection

Automatic Grayscale detection (enabled by default in the print driver) checks each page to see if a page has any color on it before printing. If there is no color detected on the page, the copier prints in single-pass grayscale mode, which speeds-up printing, especially for multi-page documents that contain only some color pages. Disable this feature for maximum printing performance when printing documents that have color on every page. (When active, this feature adds approximately one-half second to the printing of each color page.)

This feature is active when the Color Model is set to “Color” (see page 32). Automatic Grayscale Detection speeds-up printing for multi-page documents in which some pages are black only, and other pages have color on them. (This also reduces the cost of printing, as you are charged for fewer color pages.) The log file indicates the number of pages within the document that were printed in grayscale mode on the copier as a result.

Note: For fastest printing of an entirely black and white document, set the Color Model to Grayscale for the print job (see page 32).

Save as TIFF

Saves a rasterized 72, 200, or 400 dpi TIFF file. The TIFF file is placed in the TIFF Folder within the Splash Folder on the Splash Server computer. To activate this feature, select a resolution from the **Save As TIFF** menu.

When Save As TIFF is selected, files are not printed, but are instead saved as files in the TIFF Folder within the Splash Folder on the Splash Server Macintosh. The TIFF Folder is pre-configured for network access by AppleTalk clients. This setup allows client PCs with an AppleTalk network connection to the Splash Server to retrieve TIFF files from the TIFF Folder on the Splash Server, and to delete TIFF files from the folder once they have been copied to the client PC.

Note: If you select a paper tray for a Save As TIFF job, the print job will error at the Splash Server. Always select Auto Tray Select for Save As TIFF jobs.

Creating a PostScript or EPS File

As an alternative to printing your document on the Splash printer/copier, you can save a PostScript language description of your document as a disk file. PostScript language descriptions of documents can be used to:

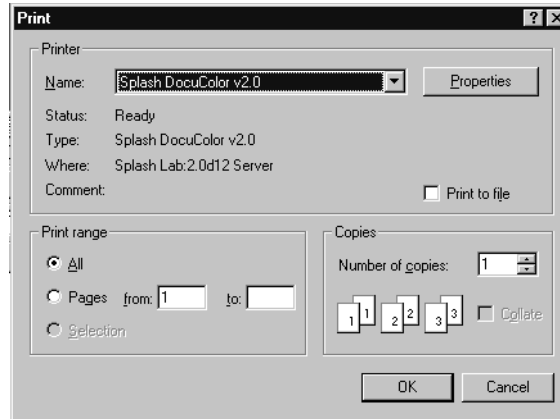
- Create on-disk document archives
- Print a document from a computer that does not have the application that created the document
- Diagnose printing problems

You also may want to create an Encapsulated PostScript (EPS) file; a description of your document that can be imported into other documents.

Some Windows applications provide a Print to File check box in the Print dialog box. If your application does not provide this option, you can use the Windows 95 Printers Properties dialog box to choose a PostScript or EPS file as the print destination.

To print a document to a file:

1. When you are ready to print a file, choose Print from the File menu in your application. The Print options appear.



2. Select print options for the file (the Splash print options are described in the previous section in this chapter).
3. When you have finished selecting print options, select the **Print to file** checkbox.
4. Click OK.
5. Enter a path and filename, then choose OK to create the file.

Refer to the Windows NT On-line Help for more information.

Deleting a Print Job

To delete a print job, you either can choose Cancel in the dialog box that appears as the job is spooling, or delete the job through the Print Manager if it is enabled. (See the documentation provided with Windows NT for instructions.)

Splash Color Correction

Splash has built-in color correction capabilities, so you can match your prints to the colors of the image on your display screen, and to process inks used on commercial printing presses.

Documents that use both RGB and CMYK graphics used to be a special problem for color proofing. Correcting color for one type of graphic affected the quality of the other. Now, with Splash mixed RGB/CMYK color correction, you get accurate, consistent color for both.

CMYK color correction in v5.0 of the Splash PCI Series is improved for matching mixed press ink colors. Splash CMYK color correction automatically compensates for differences between toner and press ink colors to produce an accurate simulation of the selected press ink profile.

Splash color correction eliminates the color variation that occurs when you print a document as a PostScript file instead of to hard copy, and produces the same RGB color results for both TIFF and EPS files. And since color correction is applied by Splash (instead of by the application) any print job can be color corrected; whether you use a pre-press application such as QuarkXPress, or a less-complex application such as Microsoft Word.

To ensure the closest possible color correction, use a display calibrator to compensate for the variations of your individual monitor, the lighting conditions in your office, and the white point of your paper.

Two “identical” but uncalibrated monitors may display an image differently enough to exceed the ability of a color correction application to closely match them. In addition, the colors you see on your printed page are affected by the light that is reflecting off the toner, and by the particular shade of white in your paper. If you do not calibrate your display, you may not be taking advantage of some significant benefits that your color correction application offers. Display calibrators can standardize the colors on your display and compensate for different lighting conditions and white points.

If you prefer, you can disable Splash color correction and use a third-party color management system to accomplish your screen-to-print or process ink-to-print color correction. (Color correction using a third-party color management system will increase processing time.)

The Splash ColorCal application can be used to calibrate each of the color correction settings described below. ColorCal gives you consistent printing of colors over time, and ensures that RGB output matches a calibrated monitor and that CMYK output matches Press standards.

Splash Color Correction Notes

To achieve the best results with Splash color correction, note the following:

- When both RGB and CMYK color correction are applied to a print job, any RGB colors in the document are mapped into the gamut of the CMYK color profile. RGB colors within the CMYK profile color gamut will match the RGB monitor settings (gamma and whitepoint), but RGB colors outside the CMYK profile color gamut may develop desaturation and hue shifts.
- If your document contains no CMYK data, or if the RGB colors are primarily out of the CMYK profile color gamut, be sure to turn off Splash CMYK color correction in the printer driver. If CMYK color correction is applied to these files, the RGB colors will be restricted to the CMYK profile color gamut and saturated colors may develop desaturation and hue shifts.

IMPORTANT: MOST BUSINESS APPLICATION DOCUMENTS CONTAIN ONLY RGB DATA. CMYK COLOR CORRECTION SHOULD NORMALLY BE TURNED OFF FOR PRINTING THESE DOCUMENTS.

- For best results with Splash color matching, set the Original Image Type print option to “Photographic” style. The alternative option, “Text/Graphics/Line Art” should be used only with grayscale documents or documents that need to show crisp line detail, such as a map.

Chapter 3

Using the Splash Web Queue Manager

If the Splash Server is set up on an Internet or Intranet, and the Splash Web Queue Manager option is installed and enabled at the Splash Server, you can connect to the Splash Server and view and control the Server printer queue remotely. The Splash Web Queue Manager lets you view and edit print commands for your jobs in the queue, temporarily halt your job from printing, or remove your job from the print queue. In addition, you can send graphics files such as TIFF and EPS to the Splash Server for printing.

Before you can use the Splash Web Queue Manager:

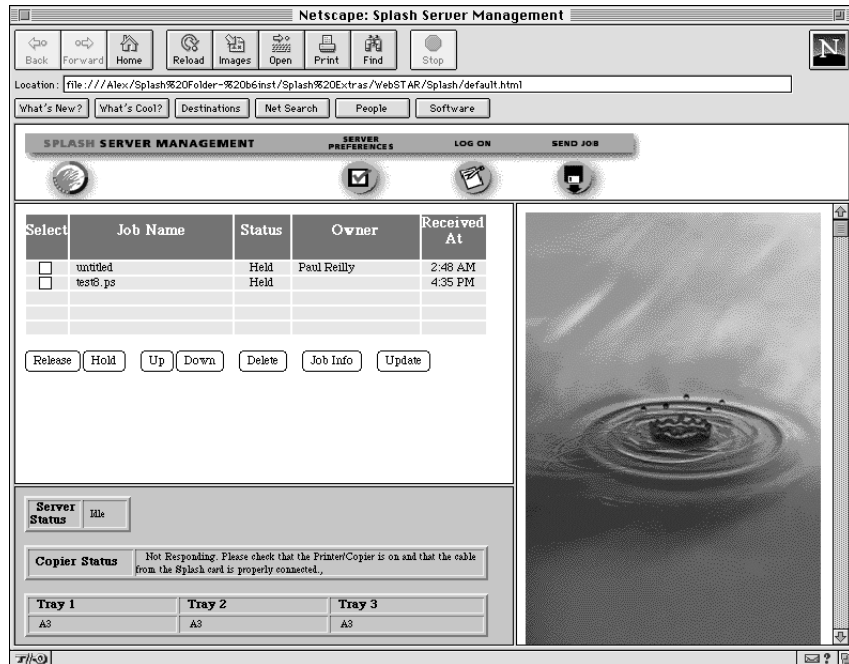
- The Splash Server computer must be set up and running on a TCP/IP network, and the Splash web option must be enabled (see the *Splash Reference* on-line manual for information about how to do this).
- Your Windows NT PC must be running on a TCP/IP network (contact your network administrator for help with this).
- Netscape Navigator (v3.0 or later) or Microsoft Explorer (v3.0 or later) must be installed on your Windows NT PC.

Contact your network administrator for help setting up your computer to use the local Intranet or Internet service. In addition, your administrator needs to provide you with the web address (URL) for the Splash Web Queue Manager.

To use the Splash Web Queue Manager:

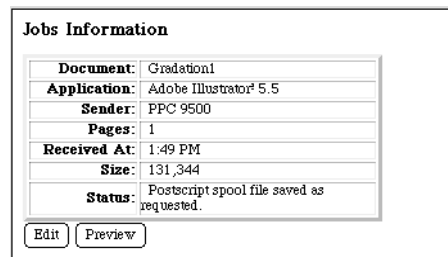
1. Open the web browser application (Netscape Navigator or Microsoft Explorer).
2. In the web browser, enter the web address for the Splash Server. (Contact your Splash administrator for this information.)

3. The Splash Web Queue Manager appears in the browser application window.



A list of print jobs waiting to print at the Splash Server appears on the left in the Web Queue Manager. Information about the Xerox or Fuji Xerox printer/copier appears at the bottom. If an error occurs at the copier, this information displays. (The chapter "Splash Error Messages" in the *Splash Reference* on-line manual provides a list of error messages.)

To view information for a print job, select the checkbox to the left of the job in the list, then click the Job Info button below the job list. Information for the selected print job appears on the right in the Splash Web Queue Manager.



If you select more than one job in the list, Splash provides information for each job you selected.

If the job has already been RIPped, you can click the Preview button in the Job Information screen to view a preview image of the job if your Splash Server is configured to support this feature.

Managing Print Jobs in the Queue

If the Splash Server is configured to allow client computers to manage print jobs in the queue, you can use the Splash Web Queue Manager to place jobs on hold, delete them, or move jobs up and down in the queue.

Use the command buttons that appear under the print job list to manage jobs in the Splash queues.

Select	Job Name	Status	Owner	Received At
<input type="checkbox"/>	test	Error	Paul Reilly	3:50 PM
<input type="checkbox"/>	test	Error	Paul Reilly	3:48 PM
<input type="checkbox"/>	SplashDefault.html	Error	Paul Reilly	3:39 PM
<input type="checkbox"/>	test	Error	Paul Reilly	5:21 PM

- To place a hold on a job, select the checkbox to the left of the job, then click the Hold button below the print job list. To take the job off hold, select it, then click the Release button.
- To make a job print sooner, select it, then click the Up button. Each time you do this, the job moves up one place in the queue.
- To force a job to print later than other jobs, select it, then click the Down button. Each time you do this, the job moves down one place in the queue.
- To cancel a print job, select it, then click the Delete button.

The job list updates to show the revised Splash Server queue information.

If the Splash Server is configured to limit remote print queue management, the Splash Web Queue Manager asks you to log on when you attempt to make changes to jobs in the print queue.

Security

Name:

Password
(optional):

Don't ask confirmation

Enter your user name and password, then click Register to complete logon. A message appears on the right to confirm your logon. The confirmation message tells you which jobs you have permission to manage with the Web Queue Manager.

Note If you did not provide a user name and password when you originally sent the job, enter the “Owner” name that appears next to your print jobs in the Web Queue Manager job list.

Editing Print Jobs in the Queue

To view and change the print options for a job listed in the Splash Web Queue Manager, select the checkbox to the left of the job, click the Job Info button, then click the Edit button that appears below the job information. The current print options for the job appear.

Page Settings <small>[Pages Tray Color Extras Submit]</small>	
Number Of Copies:	<input type="text" value="1"/>
Page Range:	<input checked="" type="radio"/> All <input type="radio"/> Odd <input type="radio"/> Even <input type="radio"/> Selected <small>Example: 3,5,10-20,25-</small>
Duplex:	<input type="text" value="No Duplex"/>
Paper Handling:	<input type="checkbox"/> Use Sorter <input type="checkbox"/> Collate <input type="checkbox"/> Reverse Page Order <input type="checkbox"/> Staple <input type="checkbox"/> Face Up
Paper Size Handling:	<input type="checkbox"/> Force Paper Size To: <input type="text" value="Letter LEF"/> <input type="checkbox"/> Scale To Paper Size
Tray Settings <small>[Pages Tray Color Extras Submit]</small>	
Tray Selection:	<input type="text" value="Automatic"/>
Bypass Tray Options:	<input type="text" value="Normal Paper"/>

Click “Pages,” “Tray,” “Color,” and “Extras” at the top of the editor to view and select Splash print options for the job. (See Chapter 2 for complete information about the Splash print options.)

When you have finished selecting print options, click “Submit” at the top of the editor, then click “Save Settings” to confirm your changes.

Printing Graphics Files

With the Splash Web Queue Manager you can send graphics files such as TIFF, EPS, and PostScript files to the printer/copier for printing.

Note Microsoft Explorer does not support sending files to the Splash Server for printing.

To send a file to Splash:

1. Click “Send Job” in the Splash Web Queue Manager window. The Splash Web Queue Manager editor appears.
2. Select print options for the job. The Web Queue Manager editor appears.

Send Job To Splash Color Server

This page allows you to submit a job to the Splash Color Server.
Your job can be a Postscript file, an EPS file, or any graphic format file
natively supported by Splash (TIFF, XWD ...). The following options will
be applied to your job.
After selecting the options click "Submit" in the tool bar to select and submit
your file.

Page Settings
[\[Pages \]](#) [Tray](#) [Color](#) [Extras](#) [Submit](#)

Number Of Copies:	<input type="text" value="1"/>
Page Range:	<input checked="" type="radio"/> All <input type="radio"/> Odd <input type="radio"/> Even <input type="radio"/> Selected <input type="text"/> Example: 3,5,10-20,25-
Duplex:	<input type="text" value="No Duplex"/>
Paper Handling:	<input type="checkbox"/> Use Sorter <input type="checkbox"/> Collate <input type="checkbox"/> Reverse Page Order <input type="checkbox"/> Staple <input type="checkbox"/> Face Up
Paper Size Handling:	<input type="checkbox"/> Force Paper Size To: <input type="text" value="Letter LEF"/> <input type="checkbox"/> Scale To Paper Size

Click “Pages,” “Tray,” “Color,” and “Extras” at the top of the editor to select Splash print options for the graphics file. (See Chapter 2 for complete information about the Splash print options.)

3. When you have finished selecting print options, click “Submit” at the top of the editor. Instructions on how to select the file to print appear.

Submit
[Pages Tray Color Extras Submit]

Select the file to Spool to the Splash Server by clicking on the "Browse" Button.
Select "Send" to send your file to the Splash Color Server.

Send this file:

Browse...

Send Reset Settings Cancel

4. Click Browse. A file selection dialog box appears. Select the file to print, then click OK in the dialog box.
5. Click “Send” to print the graphics file to the Splash Server.

The Splash Web Queue Manager transfers the file to the Drop Folder at the Splash Server. The Splash Server processes and prints the job.

Splash Web Queue Manager Notes

Job Selection Checkmarks Disappear

If you click to select a job in the Print Queue frame, and do not perform a command (such as Edit Job or Job Info) the checkmark disappears. This occurs because the server updates the Print Queue every so often. If no command is sent to the server, the server cannot tell that the job is selected at the client, so the checkmark is erased when the frame is refreshed.

Chapter 4

Application Notes

The following notes apply to the 5.0 release of the Splash Windows NT client software. Please read them before you use this software to print to Splash.

Supported Windows NT Applications

The applications listed below have been tested and are known to work with Windows NT.

- Adobe PageMaker 6.5
- Adobe Photoshop 4.0
- Adobe Illustrator 4.1
- Microsoft Office 97
- Macromedia FreeHand 7.0
- QuarkXPress 3.32

General Driver Notes

Duplicate Cover Pages

If “Print Cover Page” is selected in the Splash Server application, and you select the Cover Page option in your application, Splash prints two cover pages for the job.

Some Images Print With Limited Color

Images based on RLE-4 and RLE-8 compression print with limited halftoning effects. Typically, shades of gray or color print as either black or white. There is no known workaround.

Accidentally Printing EPS Files

If a printer driver is configured to print EPS output to a printer rather than a file, a warning message states that EPS should not be output to a port; the job prints correctly within the application, then the printer stays in a waiting mode until either another job is sent, or a time-out error occurs. To avoid this error, be sure that EPS format is printed to a file, rather than to a printer. (See Chapter 2 for instructions.)

Printing Gradient Fills

Documents that contain radial fills require extra time for Splash to process and print.

Network Notes

Novell NetWare Notes

When you set up a client to print to Splash with Novell NetWare, deselect the Banner Page option with Novell's User's Tools on the client computer. If the Banner Page option is selected, Splash will not receive some Splash Windows driver feature selections (including tray specifications and color correction settings). Novell's Banner Page feature also interferes with proper printing of Letter on Oversize and A4 on Oversize paper sizes.

When you print to Splash with Novell NetWare, your print job is spooled by both the Splash Server and by the Novell bridge. This results in slower printing. If you also enable the Windows Print Manager, the print job is triple spooled—once on the Windows client, once on the Novell server, and once on Splash.

Application Notes

Canceling a Print Job

If you cancel a print job, the Splash printer generates a blank page with some applications.

QuarkXPress Notes

With QuarkXPress, if you print with the Force Tray option, but the printer/copier tray does not contain the correct paper size, the print job errors. Splash does not report that the tray contains an incorrect paper size. To avoid this problem, use the Auto Tray Select option instead of Force Tray.

Save as TIFF and Adobe Photoshop 3.0

When you use the Splash Save as TIFF option with a long-edge feed paper orientation selected (LetterL, A4L, B5L, and so on), the page appears rotated when the TIFF is opened in Adobe Photoshop. This does not occur when short-edge feed paper orientations are used with Save as TIFF.

Printing FreeHand for Windows NT Documents

Before you print a document to Splash from MacroMedia FreeHand, you must select the Splash PPD in the FreeHand Print dialog box. A Browse window appears in the FreeHand Print dialog box. Use the Browse window to select the Splash PPD from the Windows\System directory. If you experience problems printing from FreeHand, copy the Splash PPD to the PPDs directory within the FreeHand application directory.

Index

A

Add Printer Wizard 16
Adobe Illustrator 37
Adobe PageMaker
 Auto tray select 28
 separations 37
Adobe Separator 37
AppleTalk 11
AppleTalk connection software 7
Applications supported for Splash 53
Auto Tray Select 28
Automatic Grayscale Detection 40

C

Canceling a print job 47
Canvas, separations 37
Choosing color correction 33
CMYK Press color correction 34
CMYK/RGB mixed color files 43
Color correction, RGB 33
Color options 32
Color printing 32
ColorCal 44
Contone printing option 32

Cover page
 duplicate cover pages 53
 with separations printing 37
Custom color correction 34

D

DCS files, printing 37
Default printer 21
Deleting a print job 42, 47

E

Enable Separations 37
Encapsulated PostScript (EPS) files 41
Enhanced color correction 34
EPS file printing 54
Euroscale color correction 34

F

FreeHand, separations 37

G

Gamma options 33
Graphics rendering style 33
Grayscale printing 32, 40

H

Hold status for a print job 47

I

IPX printing 7

L

Landscape paper orientation 28

LEF vs. SEF paper sizes 27

M

MACLAN Connect 7

Margins, printer 28

Memory requirement (RAM) 5

More Blue whitepoint option 34

More Yellow whitepoint option 34

N

Networking hardware and software 5

Novell NetWare 7, 54

O

Orientation 28

Original Image Type 38

Oversize transparency 29

P

Paper orientation 28

Paper size options 27

Paper source option 28

Photographic originals 38

Photographic rendering style 33

Portrait paper orientation 28

PostScript, creating a print file 41

Print cover page 53

Print job priority 47

Print options 25

Printer margins 28

Printer name 21

Printers setup 15

Q

QuarkXPress

printer description files 23

separations 37

R

RAM requirement 5

RGB color correction 33

RGB/CMYK mixed color files 43

RLE-4 and RLE-8 compression note 53

Rotated landscape paper orientation 28

S

- Save as TIFF 40
- Save Spool File 36
- Screened printing option 32
- Separations
 - print option 37
 - with cover page 37
- Special Heavy Paper 30
- Splash color options 32
- Splash ColorCal 44
- Splash IPX Direct 7
- Splash Win NT Client floppy disk 11, 15
- Supported applications 53
- SWOP color correction 34
- System requirements 5

T

- Text/Graphics/Line Art originals 38
- TIFF, save print job as 40
- Transparency Interleave 29

W

- Whitepoint options 34
- Windows NT 7