

# ***Splash PCI Series v5.0***

## ***Set-Up Manual***

July 4, 1997

**Splash Technology**  
Sunnyvale, California USA

## **Trademarks and Copyright**

Splash and the Splash logo are trademarks of Splash Technology Inc. Apple, Macintosh, LaserWriter, and AppleTalk are registered trademarks of Apple Computer, Inc. MajestiK, Regal, and DocuColor are trademarks of Xerox, Incorporated. Acolor is a trademark of Fuji Xerox, Inc. Novell Netware is a trademark of Novell, Inc. Adobe, the Adobe logo, Adobe Illustrator, PostScript, Adobe Type Manager, Adobe PageMaker, and Adobe Photoshop are trademarks of Adobe Systems Incorporated, which may be registered in certain jurisdictions. QuarkXPress is a registered trademark of Quark, Inc. Stuffit Expander Copyright © 1990-1997. All other brand or product names are trademarks of their respective holders.

### **Copyright © 1997 Splash Technology, Inc.**

PN: 0014114-0102 Last revised: July 4, 1997. Your rights of ownership are subject to the limitations and restrictions imposed by the copyright laws as outlined below.

**PROPRIETARY RIGHTS NOTICE.** The digitally encoded machine readable outline data for producing the typefaces provided as part of your laser printer is copyrighted © 1981 Linotype-Hell AG. Copyright © 1993 Adobe System Incorporated. All Rights Reserved. This data is the property of Linotype-Hell AG and Adobe Systems Incorporated and may not be reproduced, used, displayed, modified, disclosed or transferred without the express written approval of Linotype-Hell AG and Adobe Systems Incorporated.

**LZW Patent Notice:** This Licensed System includes an implementation of LZW licensed under U.S. Patent 4,558,302.

**U.S. Government Users:** The Adobe Licensed System provided with this product is a “commercial item” as that term is defined at 48 C.F.R. 2.101 (OCT 1995), and more specifically “commercial computer software” and “commercial computer software documentation” as such terms are used in 48 C.F.R. 12.212 (SEPT 1995). Consistent with 48 C.F.R. 12.212 and 48 C.F.R. 227.7202-1 through 227.7202-4 (JUNE 1995), the Licensed System is provided to U.S. Government End Users (a) only as a commercial end item and (b) with only those rights as are granted to all other End Users pursuant to the terms and conditions herein.

It is against the law to copy, reproduce, or transmit including, without limitation, electronic transmission over any network any part of the manual or program except as permitted by the Copyright Act of the United States, Title 17, United States Code. Under the law, copying includes translation into another language or format. However, you are permitted by law to write the contents of the program into the machine memory of your computer so that the program may be executed. You are also permitted by law to make working copies of the program, solely for your own use, subject to the following restrictions: (1) Working copies must be treated in the same way as the original copy; (2) If you ever sell, lend, or give away the original copy of the program, all working copies must also be sold, lent, or given to the same person, or destroyed; (3) No copy (original or working) may be used while any other copy (original or working) is in use except within the terms of this license. The copyright notice that is on the original copy of the program must accompany any working copies of the program.

The above is not an inclusive statement of the restrictions imposed on you under the Copyright Act. For a complete statement of the restrictions imposed on you under the copyright laws of the United States of America, see Title 17, United States Code.

### **FCC Compliance**

Note: This equipment has been tested and found to comply with the limits for a Class A digital device, pursuant to Part 15 of the FCC Rules. These limits are designed to provide reasonable protection against harmful interference when the equipment is operated in a commercial environment. This equipment generates, uses and can radiate radio frequency energy and, if not installed and used in accordance with the instruction manual, may cause harmful interference to radio communications. Operation of this equipment in a residential area is likely to cause harmful interference in which case the user will be required to correct the interference at his or her own expense.

Shielded cables must be used with this equipment to maintain compliance with FCC regulations.

## **Canadian DOC Notice**

This Class A digital apparatus meets all requirements of the Canadian Interference-Causing Equipment Regulations.

CET APPAREIL NUMERIQUE DE LA CLASSE A RESPECTE TOUTES LES EXIGENCES DU REGLEMENT SUR LE MATÉRIAL BROUILLEUR DU CANADA.

## **Japanese VCCI Statement**

この装置は、第一種情報装置（商工業地域において使用されるべき情報装置）で商工業地域での電波障害防止を目的とした情報処理装置等電波障害自主規制協議会(VCCI)基準に適合しております。

従って、住宅地域またはその隣接した地域で使用すると、ラジオ、テレビジョン受信機等に受信障害を与えることがあります。

取扱説明書に従って正しい取り扱いをして下さい。

## **CE Mark**

### **DECLARATION OF CONFORMITY**

We, Splash Technology, Inc, declare under our sole responsibility that the Splash products to which this declaration relates are in conformity with the following standards or other normative documents:

EN55022/CSPR22 CLASS B  
EN0082-1/IEC 801-2,3,4

following the provisions of :

89/336/EEC-EMC Directive

Splash Technology, Inc. 555 Del Rey Avenue, Sunnyvale, CA. 94086 USA

The signed and dated Declaration of Conformance is on file at the above address.





# ***Table of Contents***

<b>Introduction</b> .....	<b>9</b>
Product Features .....	9
Splash PCI Series v5.0 Server Models .....	13
System Notes .....	13
Registration Card .....	14
Compatible Applications .....	14
An Overview of Splash Adobe PostScript Printing .....	15
About The Splash Server Manuals .....	17
<b>Chapter 1 — Setting Up the Splash Server</b> .....	<b>19</b>
Connecting the System .....	20
Splash Key .....	22
Setting Up the Splash Server .....	22
Copier Set-Up Notes .....	25
Disable the Built-In Auto Tray Switching Option in Regal, Acolor 93x, and DocuColor 5799 Copiers .....	25
Installing the Splash Client Software .....	25
Setting Up TCP/IP and Novell NetWare Client Printing .....	25
Installing the Splash Plug-Ins for Adobe Photoshop .....	26
Splash Server System Performance .....	27
Disk Size .....	27
Memory Size .....	31
Troubleshooting .....	32
Splash Server On-Line Manuals .....	34

<b>Chapter 2 — Using the Splash Server</b> .....	<b>35</b>
Starting and Stopping the Server Application .....	36
Working With the Splash Server Application .....	36
Starting and Stopping Printing .....	37
Working With Print Jobs .....	38
Moving Jobs .....	38
Viewing and Editing Print Options for a Job .....	39
Deleting Print Jobs .....	40
Setting Default Print Options .....	40
Checking a Print Job for Errors Before You Print .....	42
Setting Splash Server Preferences .....	44
Setting Server Preferences .....	45
Setting Network Preferences .....	47
Setting Features Preferences .....	49
Setting Server Screening Preferences .....	51
Setting Server Style Preferences .....	52
Setting CMYK Color Correction Profiles .....	53
Drop Printing Files to Splash .....	54
Drop Printing Notes .....	55
Starting a Log File .....	56
Printing the Job Log .....	57
Job Log Notes .....	58
Adding Fonts to the Splash Server .....	59
Enabling Font Downloading at the Splash Server .....	59
Downloading Fonts to the Splash Server .....	60
Font Downloading Notes .....	63
Splash Server Notes .....	64
Increasing the Maximum Number of Jobs That Can Be in the Print Queues .....	64
Disable Type Reunion Extension .....	64
Running Other Applications on the Splash Server .....	65
Print Job Name Notes .....	65
RIP While Receive .....	65
Look Ahead Routing .....	66
Job Processing Notes .....	66
Customizing the Splash Color Control Strip .....	66

Switching Network Protocols for the Splash Server .....	67
Disabling EtherTalk .....	67
Server Disk Full .....	67
Servers With Many Fonts Installed .....	67
Splash Server Troubleshooting Notes .....	68
Installer Notes .....	68
Job Previews Notes .....	68
PostScript Error Reported for a Successful Print Job .....	68
<b>Index.....</b>	<b>69</b>





# ***Introduction***

Thank you for purchasing a Splash Professional Color Imaging Series Server. The Splash™ PCI Series Server is a pre-configured PostScript print server designed for the Xerox MajestiK, Regal, DocuColor 5799, or Acolor Series of digital color copiers. The Splash PCI-E Series Server is for use with the DocuColor 5750 or Acolor 620 series copiers. The Splash Server uses true Adobe™ PostScript processing to deliver high-quality color images. Each Splash Server can be connected to a single copier unit.

Your Splash Server is pre-configured with all software and hardware needed to work as a powerful and flexible network print server. This manual describes how to connect the hardware pieces included in the Splash PCI Series Server package, and how to set up the system to function as a printer server. Information about how to install the Splash printing software on Macintosh®, Microsoft® Windows 3.1, Windows 95, and Windows NT client computers, as well as detailed information about Splash print features and product specifications are provided as on-line documentation (pre-loaded on your Splash Server computer).

## ***Product Features***

All models of the Splash Professional Color Imaging Series Server provide:

- The Splash Server application. This true Adobe PostScript™ CPSI software (Configurable PostScript Interpreter Raster Image Processor) converts Level 1 and Level 2 PostScript code into a pixel-by-pixel page description that the printer/copier uses to print an image. The open platform Macintosh architecture enables you to use virtually all commercially available Macintosh hardware and software applications with Splash, including color management systems and a variety of media input devices.
- Printer drivers for local and network printing on a Macintosh. These drivers convert the output from your applications to PostScript code.

- Printer driver software for network printing from a personal computer running Microsoft Windows NT, plus custom printer description files for printing to Splash from Windows 95 or Windows 3.1. This software requires a PC-to-Macintosh network bridge (such as Novell NetWare or Miramar MACLAN Connect), or a TCP/IP network connection (Windows 95 or Windows NT).
- Direct IPX printing. Provides an easy way for computers connected to a Novell NetWare server to print to Splash. You do not need to install AppleTalk connection software. Splash creates a native Novell IPX connection from the Splash Server to the Novell server. Once set up and activated, it operates automatically to send print jobs to the Splash Server each time a Novell client computer prints to the Splash print queue on the Novell NetWare server. Splash IPX printing is simple to set up and supports all Novell Ethernet frame types. See the chapter “Setting Up TCP/IP and NetWare Direct Printing to Splash” in the *Splash Reference* on-line manual for more information.
- TCP/IP Direct Printing. Enables UNIX-style LPD/LPR printing to Splash over a TCP/IP network. See the chapter “Setting Up TCP/IP and NetWare Direct Printing to Splash” in the *Splash Reference* on-line manual for information.
- Selectable full-color, screened, or high-speed grayscale printing for a wide variety of page image sizes. (See the *Splash Reference* on-line manual for a complete list of supported page image sizes.)
- RGB color correction that enables each client workstation to match printed output to their specific monitor. The powerful RGB color correction provides, for the first time, the ability to color correct problem files properly and to show true blue colors without any purple shift.
- CMYK color correction that provides highly accurate press ink matching for your color press proofs. Splash CMYK color correction automatically compensates for differences between toner colors and press ink colors to produce the closest possible match to press inks in the copier output.
- Powerful mixed file color correction support. Splash is the first PostScript server to separately color correct RGB and CMYK color types for a file. This enables you to properly print many “problem” files with no adjustment.
- ICC color output profiles for use with Apple’s ColorSync™ 2.0 color management software. The custom ICC profiles enable Splash to support multiple platforms and multiple CMS capabilities.
- Adobe Photoshop Separation Tables for Splash. Enable you to use the Adobe Photoshop Separations feature to create CMYK separations for printing to Splash.

- Separations support. Prints a composite proof for your separations documents (including DCS files). With this Splash feature you can use any number of color plates in your document. Splash simulates the full range of colors and tints for PANTONE, DIC, or Toyo colors. You no longer need to convert spot colors to process colors before you print. Splash separations enhances workflow for color plate production.
- The Splash Acquire plug-in module, for CMYK scanning locally with the printer/copier using Adobe Photoshop. Scanning is performed directly into the Splash Server (not over the network) to avoid network transfer delays.
- The Splash Export plug-in module, for printing scanned images in Adobe Photoshop directly to the printer/copier. This command prints directly to the copier to avoid network transfer delays.
- RIP While Receive. Splash RIPs a file as it is received whenever it is not processing another job, which adds tremendous productivity gains in most customer environments.
- Continual Print. For many documents, Splash can process and print files at copier-rated speeds. This feature is applied to print jobs at the printer driver.
- Spool File Handling Options. For situations where the same, large PostScript file is reprinted from time to time, the ability to save the spool file at the Server can lead to significant productivity gains. The Splash Server can be configured, if necessary, to spool all incoming files.
- Job Ticketing. Macintosh clients can enter identification or job information to a comment field for each job. Comments entered at the printer driver can be viewed at the Splash Server and in the server's printing log.
- Save as TIFF. This feature enables designers to send a file to the Splash Server, and then to view a bitmap of the processed file, without leaving their workstations. Combined with separations support, this enables a designer to view overprint and trapping effects during the design process, without the need to actually make a print and go to the printer/copier to retrieve it. Most DTP applications do not enable these effects to be viewed directly on the screen in the application. This can significantly increase productivity during the design process.
- Progressives support. You can print up to four sheets of paper for a color document with any combination of C, M, Y, and K color passes on each sheet. This enables you to examine the result of adding each color pass to a print job.

- **Splash ColorCal.** Software that calibrates Splash for consistent, accurate color, regardless of changes in the copier's color output that occur over time and with changes in the environment. Splash ColorCal is a powerful tool for the professional color image designer, but it is useful also for anyone who creates business graphics or other less-technical color documents. Splash ColorCal requires no special color knowledge and does not require the use of an expensive densitometer. Splash ColorCal enables you to create and use your own CMYK color profiles. See the chapter "Calibrating With Splash ColorCal" in the *Splash Reference* on-line manual for more information.
- **Look Ahead Routing.** This smart look-ahead capability determines if there are any other files in the queue before yours. If not, then the Splash Server will immediately begin to RIP your file. If another file is ahead of yours, the Splash Server automatically spools your file. Multiple files can be received by the Server at the same time. Jobs are placed in the print queue in the order in which they have completed spooling. This prevents large jobs from blocking smaller jobs that are sent to the server at the same time.
- **Print Job Preflighting.** Screen spooled print jobs at the Splash Server for PostScript errors before they print.
- **Splash Drop Printing.** Print TIFF, EPS, and files in text-based processed PostScript format, at the Splash Server or from any AppleTalk network client, without using a special PostScript file downloader utility. Simply drag the graphics file directly onto the Splash Server application window, or place them in the shared Drop Folder on the Splash Server Power Macintosh.
- **A Macintosh Client Status Desk Accessory (DA).** The Splash Status DA lets you view and control print jobs, and receive printer/copier and server status remotely from any Macintosh Client.
- **Optional Internet or Intranet Web Print Queue Manager.** Enables remote clients on any computer platform to view and control their print jobs at the Splash Server. Requires a TCP/IP connection to the Splash Server and Netscape Navigator 3.x or Microsoft Internet Explorer 3.x web browser. See the chapter "Setting Up the Splash Web Queue Manager" in the *Splash Reference* on-line manual for more information.
- **35 Adobe Roman fonts.** (See the *Splash Reference* on-line manual for a complete list of fonts supplied with the Splash software.)
- **Adobe PostScript Level 2 support** for automatic decompression of embedded JPEG files prior to printing. This results in a significantly reduced transfer time when printing JPEG files over a network.
- **A detailed, accurate log of print activity,** to simplify tracking and billing. Format commands let you show customer subtotals in the printed log.

## **Splash PCI Series v5.0 Server Models**

The Splash PCI 640 Server provides:

- 64 MB of frame buffer memory to support the on-board PostScript Level 2 RIP. Upgradable to 128 MB.
- 400 x 400 dpi full contone printing for page sizes up to A4/Letter; visually lossless 400 x 400 dpi for page sizes up to A3/11x17.

The Splash PCI 1280 Server provides:

- 128 MB of frame buffer memory to support the on-board PostScript Level 2 RIP.
- 400 x 400 dpi full contone printing for all page sizes (with Document Mode off).

The Splash PCI-E 320 Server provides:

- 32 MB of frame buffer memory to support the on-board PostScript Level 2 RIP. Upgradable to 64 MB.
- visually lossless 400 x 400 dpi contone printing for page sizes up to A4/Letter; ColorTone 2-bit printing for page sizes through A3/11x17.

## **System Notes**

**IMPORTANT:** *All of the sections and procedures that appear in this manual assume that the Xerox printer/copier has been correctly installed, and is currently functioning as a copier. In addition, the Xerox IFU Port Kit, part number 98K32870, must be installed in the Xerox MajestiK, Regal, or DocuColor Series copier by a Xerox Service Representative. The IFU Port Kit provides the connection port necessary for the Splash Server.*

If there is a problem with the copier, contact Technical Support before you proceed with setup of the Splash Server.

You must provide networking hardware and software for all client workstations that will print to the Splash Server. Refer to the instructions provided with your network products for instructions on how to connect the Splash Server and client workstations to the network.

Additional internal memory may be required to run other applications on the Splash Server (the Macintosh directly connected to the printer/copier), or to run multiple Splash applications at the same time.

To run the Splash Web Queue Management option you must install additional system memory on the Splash Server computer.

***IMPORTANT:*** *Applications running on the Splash Server may respond slowly while the Splash Server is processing print jobs. Avoid using other application software on the Splash Server computer while the Server application is running.*

### **Registration Card**

Be sure to complete the Splash Registration Card and mail it to Splash Technology. You will receive software upgrade notifications for your Splash Server.

### **Compatible Applications**

The Splash Server prints PostScript-based files. The following Macintosh and Windows applications have been tested with Splash:

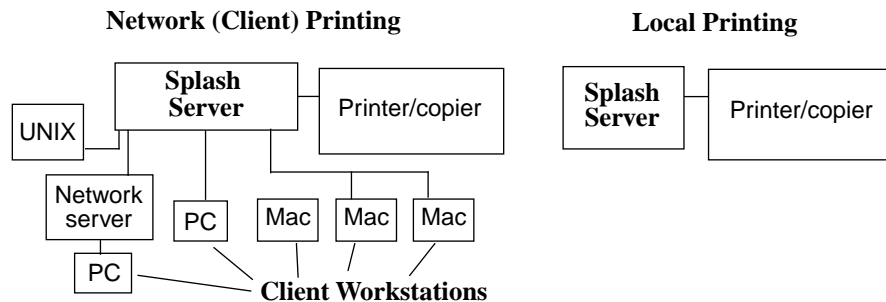
- QuarkXPress®
- Adobe Illustrator™
- Adobe PageMaker®
- Macromedia FreeHand®
- Adobe Photoshop™
- Microsoft Excel
- Microsoft Word
- Microsoft PowerPoint

The Splash Acquire and Export plug-ins require Adobe Photoshop v3.0 or later to operate. Other applications that support Adobe Photoshop plug-ins may work with Splash Acquire and Export, but have not been tested with the Splash Server.

## ***An Overview of Splash Adobe PostScript Printing***

The **Splash Server application** is the software that controls printing and color correction.

The Splash Professional Color Imaging Series Server computer is called the **Splash Server**. The Splash Server is connected directly to the printer/copier.



A Macintosh or Windows-based personal computer (Windows 95, Windows 3.1, or Windows NT v4.0 or later) attached to the Splash Server by a network connection is called a **Client**.

The Splash Server supports:

- **Network printing** from client workstations connected to the Splash Server.
- **Local printing** from applications run on the Splash Server.

Client workstations need to install the **Splash printer driver** software to apply the Splash printing features (such as color correction) to print jobs. Splash provides custom client print drivers for Macintosh and PC workstations.

The Splash Server spools, processes, and performs color correction on the files you print. The Splash Server application and the Splash printer driver control the printing.

When you print a file to the MajestiK, Regal, DocuColor, or Acolor series printer/copier:

1. The Page Setup options available in each application come from the custom Splash printer driver. When a file is sent to print, the printer driver converts the commands generated by the application into PostScript code.
2. When you print from a client computer, the Splash printer driver software creates PostScript code and sends it over the network to the Splash Server. Large files take longer to transfer—the length of transfer depends on file size and network traffic.

Splash can receive print jobs from multiple network clients simultaneously.

3. The Splash Server spools (temporarily stores) the intermediate PostScript files on the hard disk where the Server application is located.

When you print from the Splash Server, the PostScript code is immediately spooled and queued on the Splash Server hard disk.

4. The Server application uses true Adobe PostScript code to calculate, pixel-by-pixel, the image that will be generated by the printer. This is called Raster Image Processing (RIP).
5. If Splash Color Correction is enabled, the Splash Server application corrects the color of the printed output to match the screen image of the selected display type or to match the standard process ink colors used by commercial printing presses. If both RGB and CMYK colors are present in the same document, Splash color corrects separately for both color types.
6. The file is sent to the printer/copier, where it is printed.



## ***About The Splash Server Manuals***

This manual explains how to set up the Splash Server hardware and software. Information about how to set up remote clients for printing to Splash is provided in other on-line manuals, which are pre-loaded on the Splash Server machine. The Splash on-line manuals are also provided on the Splash software CD-ROM. See “Splash Server On-Line Manuals” on page 34 for a list of on-line manuals.

To use the Splash Server, you should be familiar with Macintosh procedures and conventions, such as how to start an application, how to open and close files, and how to use the mouse. Refer to your *Macintosh User's Guide* for information.

In certain geographical areas, such as the Asia/Pacific region, the printer/copier is sold as the Xerox Acolor printer/copier. In other areas, the printer/copier is sold as the Xerox MajestiK, Regal, or DocuColor printer/copier. The hardware and software described in this manual are compatible with and operate in the same way on any of these printer/copiers. We refer to the MajestiK, the Regal, the DocuColor, and the Acolor as “the printer/copier” throughout this manual.

For more information about the MajestiK, Regal, DocuColor, or Acolor Color Series, refer to the manuals provided with your printer/copier.



# Chapter 1

## Setting Up the Splash Server

*In this chapter:*

<b>Connecting the System</b> .....	<b>20</b>
<b>Splash Key</b> .....	<b>22</b>
<b>Setting Up the Splash Server</b> .....	<b>22</b>
<b>Copier Set-Up Notes</b> .....	<b>25</b>
<b>Installing the Splash Client Software</b> .....	<b>25</b>
<b>Setting Up TCP/IP and Novell NetWare Client Printing</b> .....	<b>25</b>
<b>Installing the Splash Plug-Ins for Adobe Photoshop</b> .....	<b>26</b>
<b>Splash Server System Performance</b> .....	<b>27</b>
Disk Size .....	27
Memory Size .....	31
<b>Troubleshooting</b> .....	<b>32</b>
<b>Splash Server On-Line Manuals</b> .....	<b>34</b>

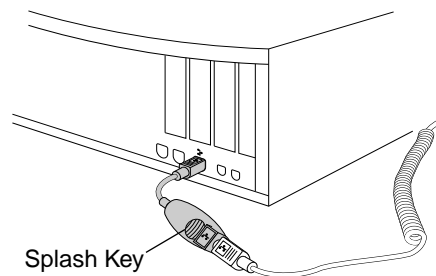
The Splash Server is a fully-equipped server/workstation that is pre-configured with all needed software. This chapter describes how to connect the specific hardware pieces included in the package, and how to start the system so that it will function as a server.

## ***Connecting the System***

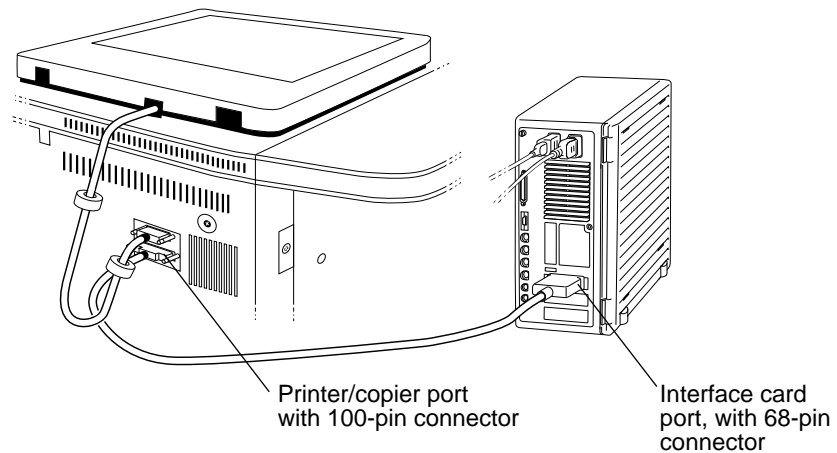
This section explains how to unpack and connect the Splash Server. If you are familiar with installing and connecting a Macintosh computer, parts of this section will serve as a review. However, you should read this entire section carefully to be sure that your Splash Server will function correctly on the network.

To unpack and connect the Splash Server:

1. Make sure that the Xerox MajestiK, Regal, DocuColor, or Acolor copier is properly installed and connected, and that it is loaded with Letter or A4 size paper. Use the MajestiK, Regal, DocuColor, or Acolor as a photocopier to make sure that it is turned on and functioning correctly.
2. The packing box for the Splash Server contains several component boxes. Remove each of these boxes from the packing box. The boxes for the CPU and the display are heavy; you may want assistance in lifting and positioning these boxes on your work surface.
3. Compare the items listed on the Splash Server Packing List with the actual contents of the Splash package. If any items are missing, contact your local sales representative before you proceed.
4. Unpack the display, keyboard, and Splash Server CPU.
5. Place the Splash Server CPU and the color display in the work area where they will be used. You should position these components close to the Xerox copier. The cable that connects the Splash Server CPU to the copier is 6 meters (about 18 feet) in length.
6. Remove the keyboard from its box, and connect the ADB cable to the port on the keyboard.
7. Connect the large end of the Splash Key to the ADB keyboard cable.
8. Connect the small end of the Splash Key to the ADB port on the back of the Splash Server CPU.



9. The mouse is included in the box with the Splash Server CPU. Remove the mouse, and connect it to the keyboard.
10. Connect one end of the GFI power cord to the socket on the back of the Splash Server CPU, and the other end to the Macintosh power cable provided with the Power Macintosh.
11. Connect the other end of the Macintosh power cable to a live, grounded AC outlet.
12. Connect the color display to the Splash Server using the provided cable. Tighten the thumbscrews to secure the cable.
13. Unpack the Splash Accessories Kit. Connect one end of the Splash cable to the connector on the Splash PCI board on the back of the Splash Server computer, and the other end to the Xerox copier. Tighten the thumbscrews on the cable at the printer/copier to secure the connection.



14. Connect the Splash Server CPU to your computer network.

You have completed connecting the Splash Server equipment.

## ***Splash Key***

The Splash Key is a hardware device that connects to the ADB port on your computer, between the computer and the keyboard ADB cable. The Splash Key prevents unauthorized use of the Splash Server and also provides maximum security by locking the Splash Server application when the key is removed.

The Splash Server application runs normally when the Splash Key is connected to the keyboard cable. To prevent unauthorized printing, shut down the Splash Server CPU and remove the Splash Key from the keyboard cable. This locks the Splash Server application until the Splash Key is replaced on the keyboard cable.

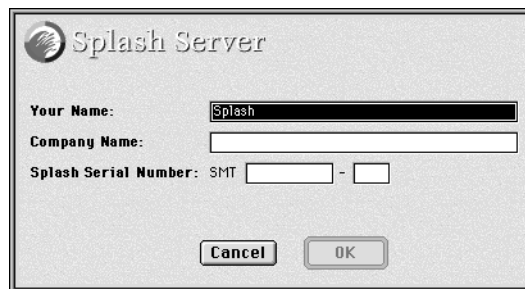
***IMPORTANT:*** Shut down the Splash Server CPU before removing or replacing the Splash Key.

## ***Setting Up the Splash Server***

When you start up the Splash Server computer, the Splash Server application starts automatically. You are asked to provide the product registration number for the Splash Server software when you start the Splash Server for the first time.

To start the Splash Server for the first time:

1. Turn on the power for the color display.
2. Start up the Splash Server. (Press the Power key on the keyboard.)
3. The Splash Server takes a moment to start, and load its pre-installed software. The Splash Server application starts automatically, and a product registration dialog box appears.



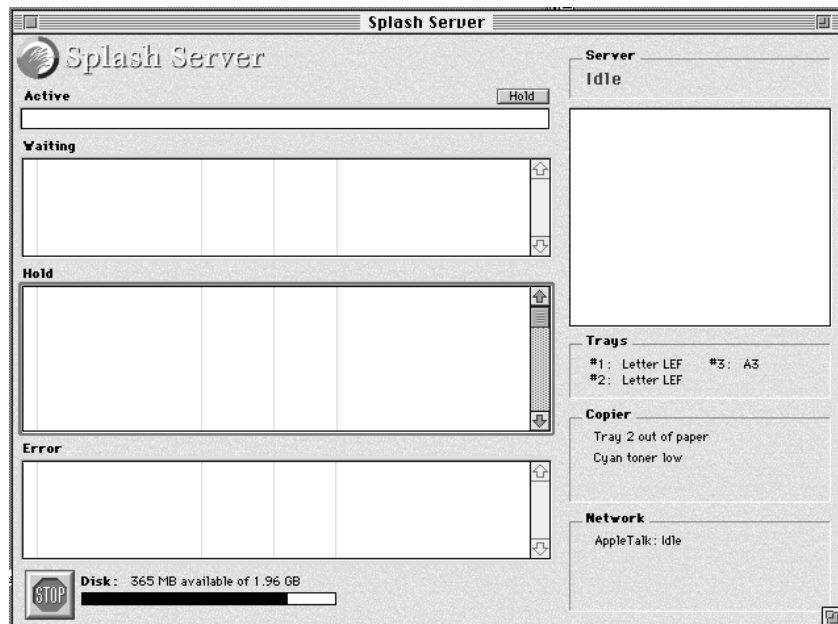
The image shows a registration dialog box titled "Splash Server". It contains three input fields: "Your Name:" with the text "Splash" entered, "Company Name:" which is empty, and "Splash Serial Number:" with "SMT" followed by two empty boxes separated by a hyphen. At the bottom are "Cancel" and "OK" buttons.

4. Enter your name, the name of your company, and the serial number for the Splash Server software. The serial number is located on the back side of the Splash CD-ROM jewel case. Look for a number with the “SMT” prefix. All alpha and number characters must be entered.

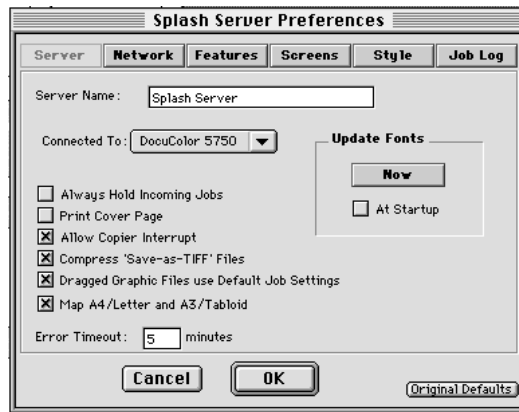
**Note:** The Splash Server software is pre-installed on the Splash Server. It is not necessary to insert the CD-ROM in the computer.

5. When you have entered the software registration information, click OK.  
The Splash Server application initializes the PostScript interpreter used for printing. This process may take more than a minute.
6. When initialization is complete, Splash prints a start-up page to the printer/copier. The appearance of the start-up page confirms that the Splash Server is functioning correctly, and is properly connected to the printer/copier.

The Splash Server window appears.



- To complete setup for the Splash Server, choose Preferences from the Server menu. The Splash Server Preferences appear.



- Select the model of your Xerox or Fuji Xerox copier from the “Connected To” menu:
  - Select **MajestiK** for a Xerox MajestiK or Acolor 630 series printer/copier.
  - Select **Regal** for a Xerox Regal or Acolor 930 series printer/copier.
  - Select **DocuColor 5799** for a DocuColor 5799 printer/copier.
  - Select **DocuColor 5750** for a DocuColor 5750 or Fuji Xerox Acolor 620 series printer/copier.

**Note:** Be sure to select the correct copier model. If the wrong copier model is selected Splash will produce incorrect output for print jobs.

- Click OK.

The Splash Server is ready to work with the printer/copier for color printing and scanning.



## ***Copier Set-Up Notes***

### ***Disable the Built-In Auto Tray Switching Option in Regal, Acolor 93x, and DocuColor 5799 Copiers***

To avoid problems printing to Regal, Acolor 93x series, or DocuColor 5799 copiers from Splash, you must disable the “Automatic Tray Switching” feature of these copiers. To do this:

1. At the copier, press the yellow “Clear-All” button.
2. At the copier keypad, press \*, 0, 1, 2, 3, \* to display the Tools Mode window.
3. Under “Auto Tray Switching” select “Off”.

## ***Installing the Splash Client Software***

Your Splash Server includes software that allows computers running MacOS, Windows 3.1, Windows 95, or Windows NT to send print jobs to Splash over the network. Splash provides an on-line manual for each supported client platform. The Splash client manuals describe how to set up a client for printing to Splash and how to use the Splash color printing features. Refer to the appropriate Splash on-line manual for complete instructions on how to set up all client computers that will send print jobs to Splash.

See the section “Splash Server On-Line Manuals” on page 34 for a list of the Splash on-line manuals.

## ***Setting Up TCP/IP and Novell NetWare Client Printing***

Splash makes it easy to print files to the printer/copier from clients on TCP/IP and Novell NetWare networks. Splash supports LPR print jobs and jobs from TCP/IP print queues set up on Windows NT or Novell NetWare servers. No AppleTalk bridge software is needed.

See the chapter “Setting Up TCP/IP and NetWare Direct Printing to Splash” in the *Splash Reference* on-line manual for complete instructions on how to enable print services for TCP/IP and Novell NetWare clients.

## ***Installing the Splash Plug-Ins for Adobe Photoshop***

Your Splash Server provides plug-in software for use with Adobe Photoshop 3.0 or later. The Splash Acquire plug-in allows you to use the Xerox or Fuji Xerox printer/copier as a scanner. The plug-in adds the command, “Splash Acquire” to the Acquire submenu in Adobe Photoshop. When you choose the Splash Acquire command, Splash scans the image that is placed on the printer/copier platen. You can apply color correction to the scanned image, crop, rotate, and set the resolution for the image, then save it as an Adobe Photoshop file.

The Splash Export plug-in lets you print directly to the Xerox or Fuji Xerox printer/copier from Adobe Photoshop. The plug-in adds the command, “Splash Export” to the Export submenu in Adobe Photoshop. If your AppleTalk network is used heavily, you can use Splash Export to avoid transferring the print job over the network. Use Splash Export as an alternative to the Adobe Photoshop “Print” command.

**Note:** Adobe Photoshop is not provided with the Splash Server. You must install Adobe Photoshop or Adobe Photoshop LE on the Splash Server to scan or print with the Splash Acquire and Export commands.

The Splash Acquire and Export plug-ins are located in the Splash Folder on the Splash Server. Open the Splash Extras folder, then open the Photoshop Plug-in folder to find the Splash Acquire and Splash Export plug-ins. To install the plug-ins move them to the folder where your other Adobe Photoshop plug-ins are located. Usually, this is the Acquire/Export folder within the Plug-ins folder. However, if you used the Preferences command in Adobe Photoshop to move your plug-ins to a different folder, drag the Splash plug-ins to this new folder.

**Note:** The Splash Acquire and Splash Export plug-ins work only on the Splash Server computer. The Splash plug-ins do not work when used on client computers.

See the *Splash Reference* on-line manual for complete instructions on how to use the Splash Acquire and Splash Export plug-ins.

## ***Splash Server System Performance***

The Splash Server is pre-configured to provide excellent performance as a network print server, and to provide scanning capability with the Xerox copier. However, when used in a large network environment with many users, you may find it desirable to upgrade the memory or disk storage capacities of the Splash Server. This section explains possible hardware configurations that will enhance the capabilities of the Splash Server.

### ***Disk Size***

The Splash Server includes an internal hard disk drive with at least 800 MB of free storage space. During normal operation of the Splash Server, free disk space is used in several ways:

- Images scanned with Adobe Photoshop are stored on the hard disk drive, and remain there until they are deleted or moved onto another drive.
- Files sent to the Splash Server for printing are temporarily stored on the hard disk drive as they are processed. When a print job is complete, its corresponding file is removed from the hard disk drive.

If the “Print and Save” option is selected in the printer driver, the print job spool file is placed in the Hold queue on the Splash Server after it prints. If the “Send and Hold” option is selected in the printer driver, the print job spool file is sent to the Hold queue on the Splash Server but the job does not print.

Print jobs that are placed in the Hold queue on the Splash Server remain stored on the hard disk drive until they are deleted.

If you have the optional Color Central Lite software, be aware that if you have quit the Splash Server application but the Color Central application is still running, print jobs continue to be accepted and stored on the hard disk drive for future printing.

- High-resolution files used with the optional Color Central’s APR feature are stored on the hard disk drive.
- Print jobs saved as TIFF files are placed in the TIFF folder—located in the Splash folder. TIFF files remain in this shared folder until they are deleted. To delete files from this folder, drag them to the Trash and choose Empty Trash in the Special menu from the Finder on the Splash Server.

## ***Conserving Disk Space***

Before adding more disk storage to the Splash Server, you should make sure that the existing space is used to the best advantage:

- Remove unused jobs spooled for printing. This can be done at the Splash Server or from a Client Macintosh with the Splash Status DA (see the on-line manual *Printing to Splash From a Macintosh* for information). If the optional Splash Web Queue Manager is enabled for your server any client computer can delete pool files stored at the Splash Server. A print job placed on hold consumes disk space. The Hold queue of the Splash Server is designed for short term use.

Likewise, a print job that resulted in a PostScript error will remain in the Splash Server Error queue on the hard disk drive until it is removed. Use the Splash Server application to delete errored jobs so they do not remain in the Error queue.

- Use the Adobe Photoshop file format for scanned images. Adobe Photoshop provides the capability of saving scanned images in a variety of file formats. The Photoshop file format is the most compact of the available formats, and the difference can be significant. For example, a scanned image saved in the TIFF file format may be 10 times the size of the same image saved in the Photoshop file format. The Adobe Photoshop file format retains complete compatibility with the Sample Image feature of Color Central.
- Delete TIFF files you are no longer using from the TIFF folder (located in the Splash folder).
- Delete files from the Unprintable Files folder (located in the Splash Folder).

**Note:** Back up the contents of the Splash Server hard disk to safeguard against the loss of information (image files and other data) stored on the Server hard disk.

## ***Disk Upgrades***

If you commonly encounter the error message that the disk is full on the Splash Server, or if you want to install other Macintosh applications on the Splash Server CPU, you should connect an external Macintosh SCSI hard disk drive. Replacing the factory-supplied internal hard disk drive is not recommended.

When choosing the size of an external hard disk drive, consider the network printing demands of the Splash Server. For example, if the network has 10 users who commonly print Adobe Photoshop files that are 30MB in size, the result is 300MB of storage space that is in constant use for print spooling. In this case, a 500MB hard disk drive is the minimum size required for a disk upgrade.

When connecting an external hard disk drive,

- Be sure to use an external SCSI hard disk drive that is Macintosh-compatible.
- Make sure that the external hard disk drive is correctly terminated for use with a Power Macintosh.
- Make sure that the SCSI address of the external hard disk drive does not conflict with any other SCSI address for peripherals connected to the Splash Server. The internal hard disk drive is set to SCSI ID 0 (zero). You may use any unoccupied SCSI ID number (1, 2, 4, 5, or 6).
- Always shut down (power off) the Splash Server before you connect a peripheral to the SCSI port.

The *Macintosh User's Guide*, supplied with the Splash Server, contains detailed instructions for connecting and using an external hard disk drive.

## ***Copying Files to the External Hard Disk Drive***

Once you have connected a suitable hard disk drive to the Splash Server, you must transfer the Splash Server files to the new drive. If you have the optional Color Central Lite application, transfer this to the new drive also. This causes the external drive to be used to spool and store files.

To copy the required files to the external hard disk drive:

1. Create a backup copy of the internal hard disk drive of the Splash Server.
2. Copy the Splash folder to the external hard disk drive.
3. Copy the optional Color Central folder (if present) to the external hard disk drive.

4. Delete the original copy of the Splash folder from the internal hard disk drive. To do this, drag the Splash folder to the Trash and choose Empty Trash from the MacOS Special menu.
5. Delete the original copy of the optional Color Central folder (if present) from the internal hard disk in the same way.
6. Notify all network users that file sharing for the Splash Server will be turned off, then stop Apple file sharing on the Splash Macintosh. To do this:
  - Open the MacOS Sharing Setup control panel.
  - Under File Sharing, click Stop.
  - Click OK in the dialog box that appears to confirm file sharing shutdown.
7. Click the name (text box) under the internal hard disk drive icon on the MacOS desktop. The name becomes highlighted and surrounded by a white border to show it is selected.
8. Choose Copy from the Edit menu.
9. Type a new name for the internal hard disk drive. Choose any name, so long as it is different from the original hard disk drive name.
10. Click the name under the new external hard disk drive icon to select the text.
11. Choose Paste from the Edit menu. The name of the internal hard disk drive is pasted to rename the external hard disk drive.
12. Restart the Splash Server.
13. Reactivate file sharing for the Splash Server.

The transfer of files to the external hard disk drive is complete.

## **Memory Size**

The Splash Server is equipped with adequate memory to function as a high-performance print server or scanner workstation. If you add memory to your system, you can optimize printing efficiency in several ways:

- The optional Color Central Lite package includes the Sampler application. If more memory is available to the Sampler, it will be able to open larger color image files.
- As shipped by Adobe, the Adobe Photoshop memory partition is set to 13 MB. For optimum performance, RAM available to Adobe Photoshop should be three times the size of the image file. For example, when working with a 10MB image file, Adobe Photoshop should have 30MB of RAM available. If there is not sufficient RAM available, Photoshop will temporarily store the color image data on the hard disk drive instead of RAM. This reduces performance for Adobe Photoshop when used for image processing.
- The following minimum application memory configurations are recommended for use with the Splash Server:
  - Splash Server: 8.8 MB minimum
  - Enterprise Networking: 1.028 MB minimum
  - Splash ColorCal: 2.7 MB minimum
  - Optional Color Central: 2.5MB minimum
  - Optional Sampler: 1.5 MB minimum
  - Adobe Photoshop: 13 MB minimum

**Note:** Splash Servers provide the memory needed to run the Splash Server application only. If Adobe Photoshop or other applications will be run on the server computer you will need to add memory to support those applications.

**IMPORTANT:** *The Virtual Memory option for your computer must remain off in the Memory control panel before you can use the Splash Server application.*

## ***Troubleshooting***

This section has troubleshooting tips, and explains some common problems that you may encounter when setting up and connecting the Splash Server.

Note that all of the individual hardware and software components included with the Splash Server have separate user's manuals. If you are having a problem with a particular component (such as the display), you should refer to the manual for that component for more complete troubleshooting information.

**Problem:** The Splash Server is installed and connected, but does not start when the power key on the keyboard is pressed.

### **Solutions:**

- Make sure the power cables for the Splash Server are connected to live, grounded AC outlets.
- Make sure the keyboard and Splash Key are properly plugged in, and that all cable connections are secure. If a different Macintosh keyboard and cable are available, try substituting them for the units provided with the Splash Server.

**Problem:** The Splash Server starts (with the start-up tone), but there is no image on the display.

### **Solutions:**

- Make sure the power cable for the display is plugged into a live, grounded AC outlet.
- Make sure both ends of the display cable are connected.
- Make sure the display is turned on (green power indicator light on the front panel of the display).
- Increase the brightness and contrast with the knobs on the front of the display.
- If a different Macintosh-compatible display is available, try substituting it for the display provided with the Splash Server.



**Problem:** The Splash Server starts, but the keyboard and/or mouse do not work.

**Solutions:**

- Make sure the keyboard and Splash Key are plugged in, and that all cable connections are secure. If a different Macintosh keyboard and cable are available, try substituting them for the units provided with the Splash Server.
- Make sure that the mouse is connected to the keyboard. If a different Macintosh mouse is available, try substituting it for the mouse provided with the Splash Server.

**Problem:** The Splash Server starts, but the Splash Server application reports that there is a problem.

**Solution:**

The Splash Server application requires that several system extension files be present in the Extensions folder within the System Folder, or the server application will not open. A different error message appears for each required Splash extension file that is missing:

- The error message, “A postscript error has been reported by the PostScript Interpreter” indicates that the “Splash Lib” extension is missing from the Extensions folder.
- The error message, “No Splash Card Found” indicates that the “Splash Board Startup” extension is missing.
- The error message, “The application ‘Splash Server’ could not be opened because ‘DeviceSharedLib’ could not be found” indicates that the “Splash Print Library” extension is missing.
- The error message, “The application ‘Splash Server’ could not be opened because ‘FIPLib PPC’ could not be found” indicates that the “Splash Spool Lib” extension is missing.
- The error message, “The application ‘Splash Server’ could not be opened because ‘:obj:PowerPlantLib’ could not be found” indicates that the “Splash UI Lib” extension is missing.
- The error message, “The application ‘Splash Server’ could not be opened because ‘MWRuntimeLib’ could not be found” indicates that the “Splash Runtime Lib” extension is missing.
- The error message, “The application ‘Splash Server’ could not be opened because ‘Champ.mot’ could not be found” indicates that the “Splash Board Enabler” extension is missing.

To resolve the problem, locate the missing extension file and move it back into the Extensions folder within the System Folder.

If the error message reported by the Splash Server application does not appear in the above list, refer to the chapter, “Splash Error Messages” in the *Splash Reference* on-line manual for a list of error messages and what they mean.

## ***Splash Server On-Line Manuals***

Electronic versions of the manuals for the Splash Server are provided on the Splash Server machine. The documentation files are located in the folder named “Splash On-Line Documentation,” which is a network-shared folder. All files are in Adobe Acrobat format, and can be reviewed or printed using the Acrobat Reader application on your client Macintosh or Windows machine.

The following on-line manuals are provided with the Splash Server:

- *Splash PCI Series v5.0 Set-Up Manual* (this manual).
- *Splash PCI Series v5.0 Install Manual* describes how to install a Splash Server Kit interface card and software on a Power Macintosh.
- *Printing to Splash From a Macintosh* describes how to install the Macintosh Client software and how to print to the Splash Server from a Macintosh.
- *Printing to Splash From Windows 3.1* describes how to install the Windows 3.1 Client software and how to print to the Splash Server from a PC.
- *Printing to Splash From Windows 95* describes how to install the Windows 95 Client software and how to print to the Splash Server from a PC.
- *Printing to Splash From Windows NT* describes how to install the Windows NT Client software and how to print to the Splash Server from a PC.
- *Splash Reference* describes how to use the Splash Acquire and Export plug-in modules for Adobe Photoshop. This manual also provides supported page sizes and product specifications for the Splash Servers, a list of provided fonts, error message descriptions, a diagnostic procedure, and the *Adobe PostScript Language Addendum*.
- *PANTONE Application Notes* explains how to install and use the PANTONE Professional Color Toolkit, provided with your Splash Server.

The Acrobat Reader is needed to view the Splash on-line manuals from a client machine. (The Acrobat Reader is not required for printing to Splash).

## Chapter 2

### Using the Splash Server

*In this chapter:*

<b>Starting and Stopping the Server Application .....</b>	<b>36</b>
<b>Working With the Splash Server Application .....</b>	<b>36</b>
Starting and Stopping Printing .....	37
<b>Working With Print Jobs.....</b>	<b>38</b>
Moving Jobs.....	38
Viewing and Editing Print Options for a Job.....	39
Deleting Print Jobs.....	40
Setting Default Print Options.....	40
Checking a Print Job for Errors Before You Print .....	42
<b>Setting Splash Server Preferences .....</b>	<b>44</b>
Setting Server Preferences.....	45
Setting Network Preferences .....	47
Setting Features Preferences .....	49
Setting Server Screening Preferences.....	51
Setting Server Style Preferences .....	52
<b>Setting CMYK Color Correction Profiles .....</b>	<b>53</b>
<b>Drop Printing Files to Splash.....</b>	<b>54</b>
<b>Starting a Log File .....</b>	<b>56</b>
<b>Adding Fonts to the Splash Server .....</b>	<b>59</b>
Enabling Font Downloading at the Splash Server.....	59
Downloading Fonts to the Splash Server.....	60
<b>Splash Server Notes.....</b>	<b>64</b>

## ***Starting and Stopping the Server Application***

An alias for the Splash Server application is located in the Startup Items folder in the Power Macintosh System Folder. This causes the Splash Server application to open each time you start up the server computer. If desired, you can drag the Splash Server alias to another location on the computer.

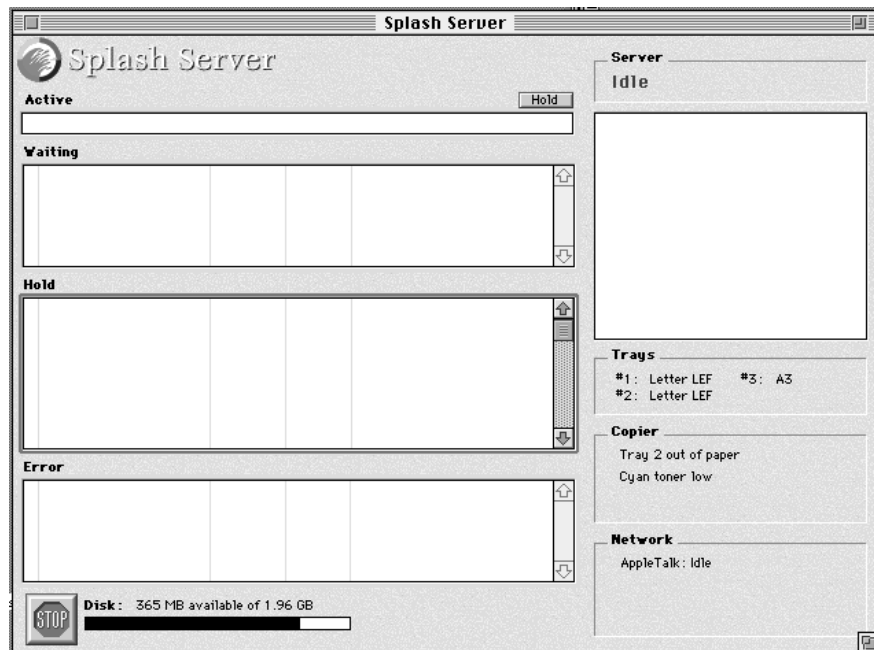
To prevent client computers from printing to Splash, quit the Splash Server application. To do this, choose Quit from the File menu within the server application. When you quit the server application, users (including a user working on the Server) cannot choose the printer/copier as a print destination.

Double-click the Splash Server application icon (or restart the Power Macintosh) to start the server application and resume printing to the printer/copier.

To control client printing to Splash, the server can be configured to spool and hold all incoming print jobs (see page 45). This allows a Splash administrator to review jobs and to determine which jobs print.

## ***Working With the Splash Server Application***

When the Splash Server application starts, the Splash Server window appears.



The Splash Server window displays information about the printer/copier and the server, and lists all jobs being held or processed at the server.

- The **Active** status area shows the currently processing print job.
- The **Waiting** queue lists print jobs that are waiting to be processed by the Splash Server.
- The **Hold** queue lists print jobs that are spooled on the Splash Server's hard drive, but are temporarily stopped from printing. To print a job in this queue, drag it to the Waiting queue.
- The **Error** queue lists print jobs that did not print due to an error (such as an empty paper tray at the printer/copier).
- The **Server** status area shows the current state of the Splash Server.
- The **Trays** status area shows the paper size currently loaded in each of the printer/copier's paper trays.
- The **Copier** status area shows the current state of the printer/copier. If an error occurs at the printer/copier, such as a tray out of paper error, a message appears here.
- The **Network** status area shows which network connections are active for the Splash Server application and provides information about each. For example, when a print job is received by the Splash Server over AppleTalk, IPX, or TCP/IP, a message appears here.

Many elements of the Splash Server window, such as the print queues and the fields within the print queues, are resizable. For example, you can drag the edges of the Waiting queue to make it larger or smaller. Drag the edges of any field inside a queue to resize the field.

### ***Starting and Stopping Printing***

A "Hold" button appears next to the Active job area in the Splash Server window. Click this button to stop processing for the job that appears in the Active area. The job moves to the bottom of the Hold queue.

A button at the bottom of the Splash Server window lets you temporarily halt processing of files by the server.



Click Stop to halt print job processing on the Server.

Client computers can send print jobs to the Splash Server while server processing is stopped; all jobs are spooled to the Server's startup disk and appear in the Splash Server Waiting queue.



Click Go to resume processing and printing.

If you stop server processing while a print job is listed in the Active queue, a dialog box appears:



If you select **Immediately** and click **OK** Splash moves the job from the Active queue to the Waiting queue.

If you select **At the End of the Current Job** in the Stop Processing dialog box, Splash moves the active job to the Waiting queue after it prints, even if the spool option selected for the job is "Print and Delete".

## ***Working With Print Jobs***

To select a print job in one of the queues, click it. To select multiple jobs:

- Hold down Shift and click any two jobs to select the two jobs and all jobs in between (extend-select).
- Hold down Command as you click jobs to select only the jobs you click.

If a selected print job has a preview image it appears on the upper-right side of the Splash Server window.

## ***Moving Jobs***

To move a job from one queue to another—or to change its position in a queue—drag it. For example, to print a job listed in the Hold queue, drag it to the Waiting queue.

## Viewing and Editing Print Options for a Job

To see information about a print job, double-click it. The Job Info window appears.



Click the **Pages**, **Tray**, **Color**, or **Extras** buttons to see the print options currently selected for the job. If desired, you can change the print options for the job before it prints. For example you can change the number of copies to print, the page size, the paper tray, or color correction for the job.

Click **Current Defaults** in the bottom-right corner to apply your custom set of Splash print option defaults to the job. (See “Setting Default Print Options” on page 40 for information about how to create a custom set of Splash print option defaults.)

If you click **Original Defaults** Splash resets all print options to match the factory defaults set by Splash Technology.

The Splash print options are described in the *Printing to Splash...* on-line manuals provided on the Splash Server hard disk.

If you double-click a print job in the Waiting queue, the Splash Server places a temporary hold on the job while you view or edit job information. When you close the job information box, the server releases the job for printing. The job moves to the bottom of the Waiting queue.

## ***Deleting Print Jobs***

To delete a job from the Splash Server queues, select it, then press the Delete key. A dialog box asks you to confirm this action. Click Yes to delete the job.

**To delete a job that currently is processing** click the Stop button at the bottom of the Server window (or choose Stop Processing from the Server menu).

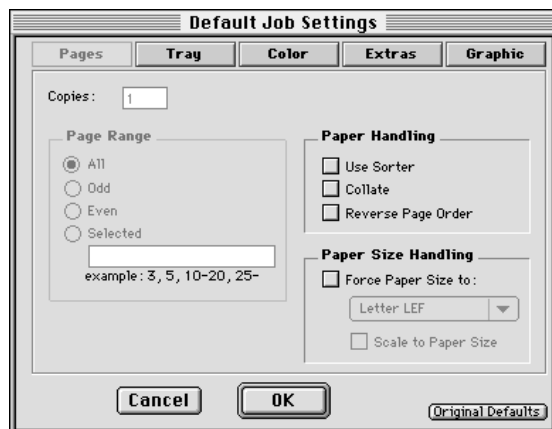
A dialog box appears:



Select Immediately, then click OK. The job moves to the bottom of the Waiting queue. Select the job, then press the Delete key.

## ***Setting Default Print Options***

Choose **Current Defaults** from the Jobs menu to create a custom set of page setup and print option defaults. The Default Job Settings window appears.



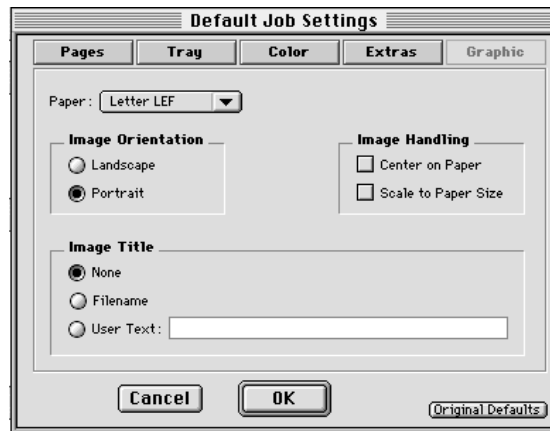
Click the **Pages**, **Tray**, **Color**, **Extras**, and **Graphic** buttons to select default print options.



The **Force Paper Size to** option lets you choose a specific paper size for all jobs that use the default print options. If you select also the **Scale to Paper Size** checkbox Splash scales the job to fit the paper size, and centers the image on the page to prevent clipping. The same scaling factor is applied both horizontally and vertically to maintain proportions for the image.

Refer to the *Printing to Splash...* on-line manuals for complete information about the print options that appear in the Default Job Settings dialog box. The same print options appear in the printer driver when you send a job to Splash from your applications.

**Graphic** default options are applied by Splash when you drop print TIFF, EPS, and PostScript files to Splash (see page 54).



If you click **Original Defaults**, Splash resets all print options to match the factory defaults set by Splash Technology.

Click **OK** to save your custom set of print defaults.

Splash uses the default print options in several ways:

- Splash automatically applies default print options to graphics files (EPS and TIFF formats) that are placed in the Drop Folder.
- Splash automatically applies default print options to graphics files that are dragged onto the Waiting or Hold queues in the Splash Server window.

*Note:* If you prefer, you can configure Splash to let you select print options for EPS and TIFF files that are dragged to the Hold queue (see page 46).

- If Splash receives a graphics file from a client on a TCP/IP network the server automatically applies default print options to the job.
- When you place a PostScript file in the Drop Folder, Waiting queue, or Hold queue, Splash applies the default print options only if the file was not created with the Splash client printer driver.
- You can apply default print options to any job in the queues. To do this, double-click the job then click “Defaults” in the Job Info window.

### ***Checking a Print Job for Errors Before You Print***

Splash can check a job for errors before it prints. The Splash Server Preflight feature examines print jobs for potential problems such as:

- PostScript errors
- missing fonts and font substitution
- paper size not available at the printer/copier.

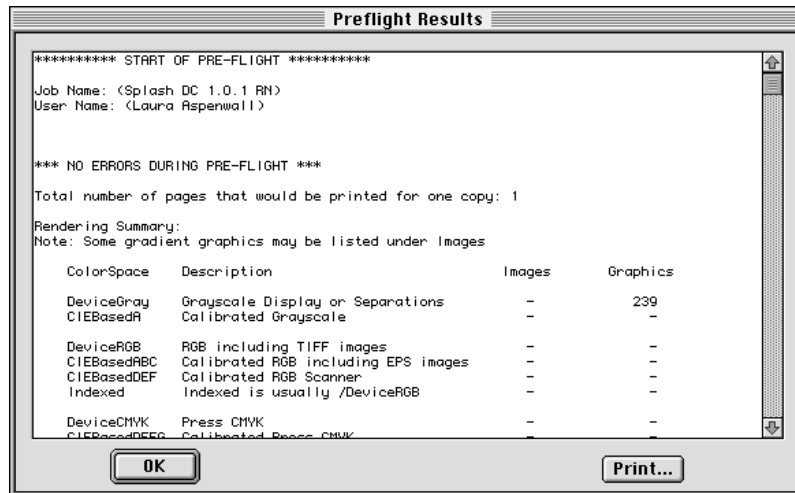
To screen a print job for potential errors, select the job in the Splash Server window, then choose **Preflight** from the Jobs menu. The job moves temporarily to the Waiting queue for preflight processing.

To see the results of preflight inspection, double-click the job in the queue. The Job Info window appears.



Click **Preflight Report** to view a report created for the job.

The Preflight Results appear.



Click **Print** to create a hardcopy preflight report for the print job.

## ***Splash Preflight Notes***

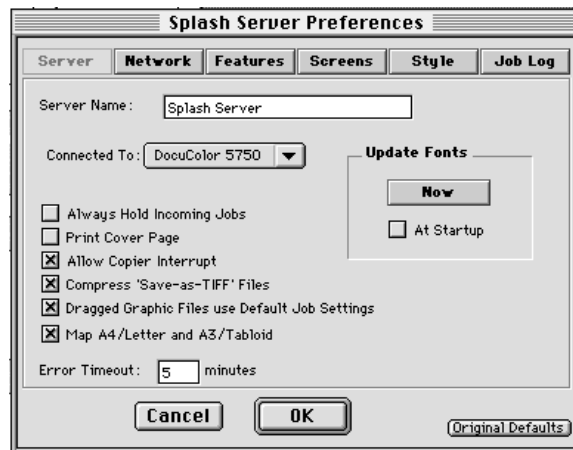
When you use Splash Preflight with a job in the Waiting or Hold queues, the Splash Server places a temporary hold on the job during preflight examination. When inspection is complete, the job moves to the bottom of the queue.

If you use Splash Preflight with a job in the Error queue and the job passes preflight inspection, the job moves to the bottom of the Hold queue.

The Splash Preflight report does not show the correct number of pages to be printed for jobs with the “Progressives” option selected.

## ***Setting Splash Server Preferences***

You can customize the Splash Server’s appearance and configure job processing options with the Preferences command. To view and change Splash Server preferences, choose Preferences from the Server menu in the Splash Server application. The Splash Server Preferences appear.



Click any button at the top of the dialog box to see more server preferences. The preferences are described in the sections that follow. When you are finished click OK to apply your changes to the Splash Server.

## ***Setting Server Preferences***

### ***Naming the Server***

The Server name appears to remote clients who connect to the Splash Server over an AppleTalk network. “Splash PCI Server” is the default name for the Splash PCI Series Server. You must change the name of the server if you have more than one Splash Server connected to the same network zone.

To change the server name, type a unique name in the **Server Name** field. Be sure to give the Splash Server a name that clearly indicates that it is a color printer/copier. If you have assigned a duplicate name, an error message appears, and you are prompted to enter a different name.

### ***Copier Configuration***

Be sure that the **Connected To** option in the Preferences dialog box is set to the correct model of Xerox or Fuji Xerox color copier.

### ***Job Processing Preferences***

The Splash Server provides the following options for processing print jobs:

- Select the **Always Hold Incoming Jobs** checkbox to place a temporary hold on all print jobs received by the Splash Server. Incoming jobs go to the bottom of the Hold queue and do not RIP or print. This allows a server administrator to review all jobs before they print.

*Note:* When this server preference is selected, each print job received by the server must be dragged from the Hold queue to the Waiting queue to print.

- Select the **Print Cover Page** checkbox to print a standard cover page as the final page for jobs that print from any tray to the top output tray.

*Note:* Splash does not print a cover page for:

- manual feed jobs
- jobs printed to the sorter
- print jobs that error and are transferred to the Error queue
- print jobs that use the Save as TIFF print driver option
- print jobs that use the Progressives print driver option
- print jobs that use the Separations print driver option

- Select the **Allow Copier Interrupt** checkbox to allow a user at the printer/copier to press the Interrupt button at the copier to temporarily halt printing of a sorter job. When this server preference is not selected, Splash prevents the interruption of jobs printed to the sorter.
- When the **Compress 'Save-As-TIFF' Files** checkbox is selected, Splash applies RLE compression when it creates TIFF files. Select this server preference to reduce the size of TIFF files created by the Splash Server. (Splash creates a TIFF file when the “Save as TIFF” option is selected for the job. See the *Printing to Splash...* on-line manuals for information about the Save as TIFF print option.)
- Select the **Dragged Graphic Files Use Default Job Settings** checkbox to apply default print options to EPS and TIFF files when you drag them onto the Splash Server Hold queue. (See page 40 for information about how to set default print options.) This feature speeds printing if you frequently print graphics files at the Splash Server.

If this checkbox is not selected, a new print options dialog box appears each time you drag a graphics file onto the Splash Hold queue.

- The **Map A4/Letter and A3/Tabloid** server preference is useful if you frequently print on Letter and Tabloid paper sizes, but occasionally you receive an A4 or A3 job. If this checkbox is selected and no A4 or A3 paper is loaded at the printer/copier, Splash automatically converts the A4 job to print on Letter paper. Jobs with A3 paper selected print on Tabloid paper.

Splash scales the job to fit the new paper size, and centers the image on the page to prevent clipping. The same scaling factor is applied both horizontally and vertically to maintain proportions for the image. After the job prints, a spool file for the job appears in the Error queue with a message to indicate that the paper size for the job was converted.

- **Error Timeout** specifies how long server processing waits when an error, such as paper tray empty, occurs during a print job. If the error condition is not corrected within the time limit specified the server transfers the job to the Error queue.

The timeout can be increased or decreased by 1 minute increments. The default is 5 minutes. If the Error Timeout is set to zero minutes, an error causes print processing to halt indefinitely until the error is corrected.

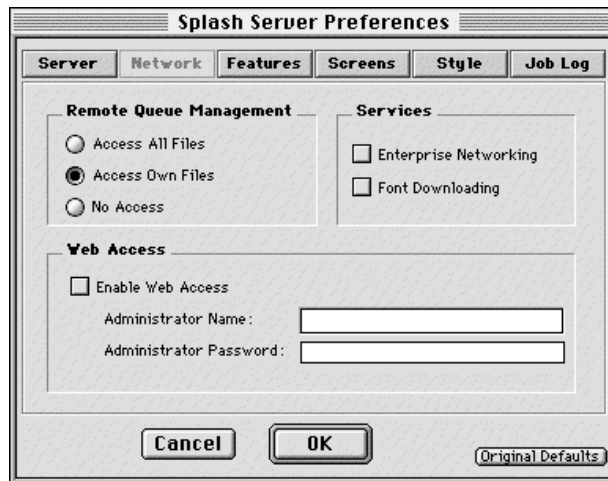
## Update Fonts

The **Update Fonts** controls are provided for use with Kanji fonts. They do not affect Roman fonts. Click **Now** in the Server preferences after you install Kanji fonts on the Splash Server. If the **At Startup** checkbox is selected, the Splash Server loads Kanji fonts when you restart the Splash Server application.

For information about how to install and download Roman fonts to the Splash Server, see “Adding Fonts to the Splash Server” on page 59.

## Setting Network Preferences

Click **Network** at the top of the Splash Server Preferences to view network printing and queue management options for the Splash Server.



## Enterprise Networking

When **Enterprise Networking** is enabled, Splash can receive print jobs from clients on TCP/IP and IPX networks in addition to AppleTalk clients. Splash is able to maintain all three network connections simultaneously. See “Setting Up TCP/IP and NetWare Printing to Splash” in the *Splash Reference* on-line manual for complete information about this Splash feature.

### ***Font Downloading***

When **Font Downloading** is enabled, you can download the PostScript fonts that are frequently used in your print jobs to the Splash Server. Downloaded fonts become resident at the server and are not sent with print jobs. This speeds printing.

You can download fonts to the Splash Server from the server computer or from any AppleTalk client computer. For information about how to install and download Roman fonts to the Splash Server, see “Adding Fonts to the Splash Server” on page 59.

### ***Web Access***

If the Splash Web Queue Management option is installed on your Splash Server, clients on an Intranet or Internet can remotely view and control their jobs in the Splash print queue. See “Setting Up the Splash Web Queue Manager” in the *Splash Reference* on-line manual for information about this feature.

### ***Remote Queue Management***

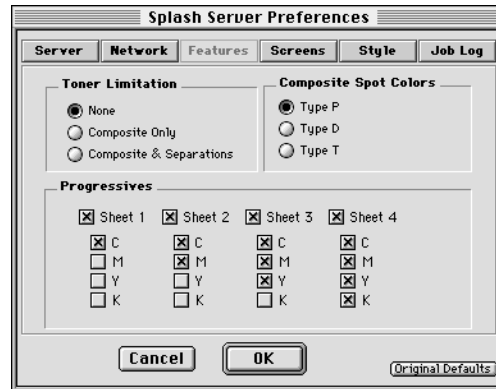
Macintosh clients can view and control the Splash print queue remotely with the Splash Status DA. The **Remote Queue Management** options control a client’s ability to manipulate jobs in the Splash print queue. (If the Splash Web Queue Management option is enabled for the server, the option you select here applies to both Macintosh clients and Web Queue Manager users.)

- **Access All Files** allows a client to view information for any job, put any job on hold, delete any job, change its position in the queue, and reprint any job that initially had an error.
- **Access Own Files** allows a client to remotely manage only their own print jobs.
- **No Access** allows a clients to view information for jobs, but they cannot perform any queue management functions.



## Setting Features Preferences

Click **Features** in the Splash Server Preferences to see more options for the Splash Server.



### Toner Limitation

Splash Toner Limitation prevents flaking in dense color areas of the job output. This feature automatically limits the maximum amount of toner applied to the paper to prevent flaking.

Splash provides three options for applying the Toner Limitation feature. This was done because this feature increases processing time for jobs that use the Splash v4.0 CMYK color correction. For normal composite color print jobs the increased processing time is minimal. For separations jobs the processing time increase is more significant.

- Select **Composite and Separations** to protect all print jobs from toner flaking.
- If you frequently use the Splash v4.0 CMYK color correction with separations jobs select **Composite Only** to speed processing for your separations jobs.
- Select **None** to disable the Toner Limitation feature.

When the Splash Toner Limitation feature is enabled, for best printing results, enable Splash CMYK color correction for all documents that include CMYK data. If the output shows small dark areas that are much darker than the surrounding dark areas, either disable Splash Toner Limitation, or select a press CMYK profile for CMYK color correction.

## Composite Spot Colors

When print jobs include PANTONE, Toyo, or DIC spot colors (created with an application that supports these press ink colors), Splash will simulate the spot colors in your composite prints.

To use this feature, select the **Composite Spot Color** type in the Splash Server Preferences, then enable “Composite Spot Color Correction” in the printer driver before you print. Splash produces output that simulates the spot color on a printing press.

- Select **Type P** to simulate PANTONE inks.
- Select **Type D** to simulate DIC inks.
- Select **Type T** to simulate Toyo inks.

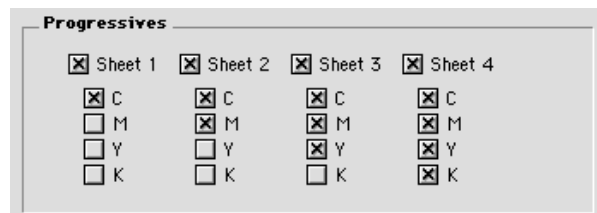
**Note:** This feature supports only 100% (non-tinted) spot colors. For best results, do not mix regular press CMYK colors in the same document with spot colors when you use this feature. (Some press CMYK colors may be interpreted as spot colors.)

Refer to the *Printing to Splash...* on-line manuals for information about how to select the Composite Spot Color Correction feature at the printer driver.

## Progressives

You can configure Splash to print up to four separate sheets for a print job. Each sheet can have up to four color passes applied. This feature allows you to examine the result of progressively adding color passes to your output.

To use this feature, select the number of sheets to print in the **Progressives** box, then select the number of colors to print on each sheet.



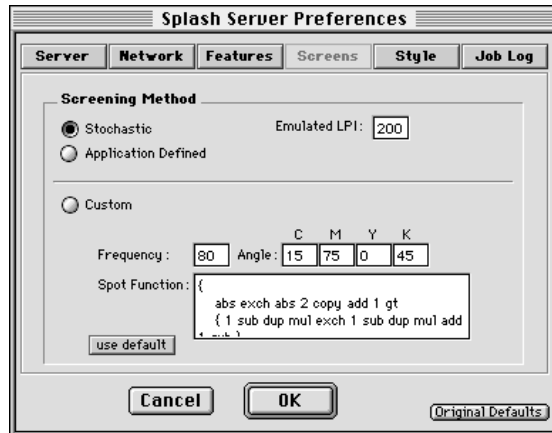
The screenshot shows a dialog box titled "Progressives" with a grid of checkboxes for selecting colors on four sheets. The grid is as follows:

Progressives			
<input checked="" type="checkbox"/> Sheet 1	<input checked="" type="checkbox"/> Sheet 2	<input checked="" type="checkbox"/> Sheet 3	<input checked="" type="checkbox"/> Sheet 4
<input checked="" type="checkbox"/> C	<input checked="" type="checkbox"/> C	<input checked="" type="checkbox"/> C	<input checked="" type="checkbox"/> C
<input type="checkbox"/> M	<input checked="" type="checkbox"/> M	<input checked="" type="checkbox"/> M	<input checked="" type="checkbox"/> M
<input type="checkbox"/> Y	<input type="checkbox"/> Y	<input checked="" type="checkbox"/> Y	<input checked="" type="checkbox"/> Y
<input type="checkbox"/> K	<input type="checkbox"/> K	<input type="checkbox"/> K	<input checked="" type="checkbox"/> K

At the printer driver choose “Print Progressives” before you print your document. See the *Printing to Splash...* on-line manuals for information about how to select Splash print options.

## Setting Server Screening Preferences

Click **Screens** in the Splash Server Preferences to see the screening options for the Splash Server.



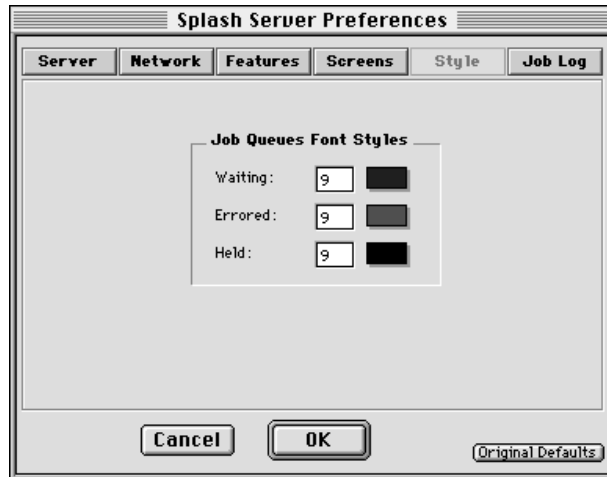
Screening is applied to print jobs that are not printed in continuous tone (contone) at the printer.

Splash provides several options for screened output:

- **Stochastic** is the default Splash Server screening method. This method uses random dot placement to prevent moiré patterns in the final output.
- **Application Defined** allows an application, such as QuarkXPress, to control screening for the print job.
- **Emulated LPI** sets the screen ruling (lines per inch). For most purposes this is set to 200.
- **Custom** lets you design a custom screen. This option overrides application screening when it is selected.
  - Set the **Frequency** to 25 or less for smooth gradients. If you set this to a number above 25 it may cause banding in printed gradients.
  - Set the screen **Angle** for each color pass. For best results, position the screens so that the dots form a symmetrical pattern. Incorrect screening angles result in a moiré pattern in the final output.
  - The **Spot Function** defines the shape of the screen dot. The default is round. Click **use default** to return to a round dot.

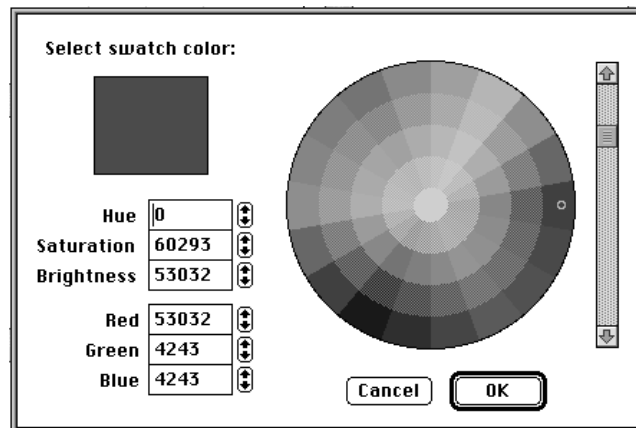
## Setting Server Style Preferences

Click **Style** in the Splash Server Preferences to set other Splash options.



You can set the color and size for text in each of the server queues. To set the color, click the color swatch on the far right.

The Apple color picker appears.

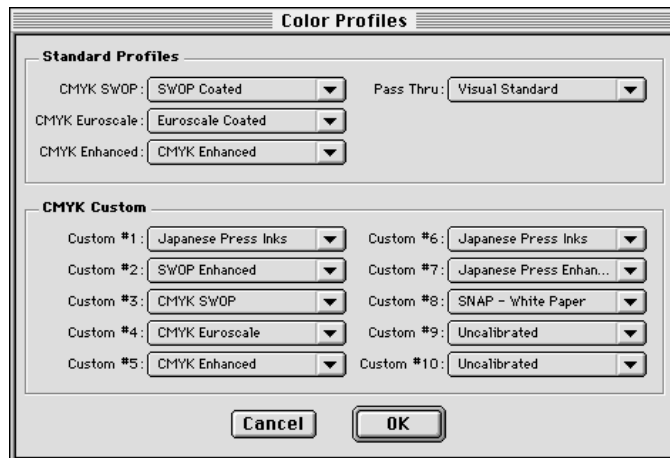


Use the scroll bar on the right to adjust brightness. Click in the color circle to select a color or define a specific color with the text boxes on the left. Click OK to choose the color and return to the Splash Preferences dialog box.

## Setting CMYK Color Correction Profiles

Splash provides three standard CMYK press ink color correction profiles and ten Custom CMYK profiles. The CMYK color correction profiles simulate commercial press inks in your output when you print CMYK documents to Splash. To apply color correction to a job, enable Splash CMYK Press Color Correction at the printer driver, then select one of the three standard or ten custom CMYK profiles. If needed, you can change the color profiles that are applied when the one of the three standard CMYK profiles or the ten custom CMYK profiles is selected.

To change the CMYK color correction profiles choose **Color Profiles** from the Server menu in the Splash Server application. The Color Profiles dialog box appears.



See the chapter “Calibrating with Splash ColorCal” in the *Splash Reference* on-line manual for complete information about the Splash CMYK Press Color Correction profiles. The Splash ColorCal chapter explains also how to calibrate the printer/copier for consistent, accurate color correction results.

## ***Drop Printing Files to Splash***

The Splash Server prints TIFF files, EPS files, and files that are in text-based processed PostScript format. You can print these files to Splash from the server Power Macintosh or from any client with an AppleTalk or TCP/IP network connection to the server. Use Splash drop printing instead of a PostScript file downloader utility to print PostScript files to Splash.

There are two ways to drop print TIFF, PostScript, and EPS files to Splash:

- Drag files onto the Splash Server Waiting queue or Hold queue.

For PostScript files, Splash copies the file to the server's hard disk before printing. For TIFF and EPS files, Splash creates a reference to the file for printing. This allows you to print a large TIFF or EPS file from an external drive (such as a SyQuest or Zip drive) without first copying the file to the Splash Server's hard disk.

- Drag files to the Drop Folder in the Splash Folder.

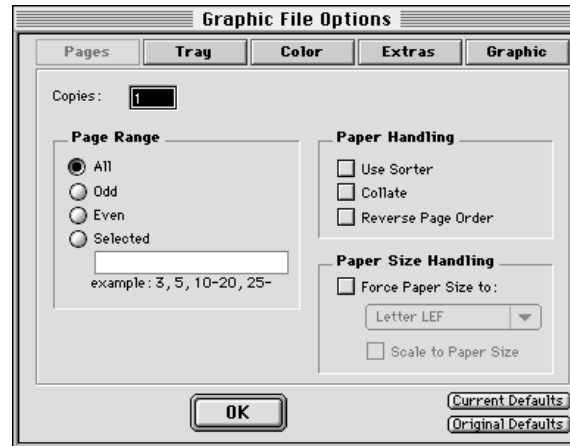
All files copied to the Drop Folder are copied to the Splash Server hard disk.

If the file cannot be printed, it is moved to the Unprintable Files folder within the Splash Folder. The Unprintable Files folder is automatically created by the Splash Server when it receives a file it cannot print.

The Drop Folder and the Unprintable Files folder are pre-configured for network sharing. These folders must remain in the Splash Folder to operate correctly with the Splash Server application. For easy network access, an alias for the Drop folder is located on the Splash Server desktop. Do not select the Drop Folder as the folder you save to when you create a PostScript file.

If you drop print a PostScript file that was created with the Splash client software, Splash uses the print options selected at the printer driver for the job. If the PostScript file was not created with the Splash client software, Splash applies the default print options to the job (see page 40).

When you drag a TIFF or EPS file onto the Splash Waiting or Hold queues to print it, Splash automatically applies default print options, such as page size and orientation, to the file. If you prefer to set print options manually for files dragged onto the Hold queue, deselect the Splash Server Preference that controls this feature (see page 46). If you deselect this preference, a dialog box with print options appears for each TIFF or EPS file you drag onto the Hold queue.



See “Setting Default Print Options” on page 40 for information on how to create a custom set of default print options.

**Note:** If you save a spool file when you drop print a TIFF or EPS file that is not located on the server’s hard disk, Splash cannot print the spool file if the original TIFF or EPS file is moved.

## ***Drop Printing Notes***

### ***Drop Printing EPS Files at the Server***

EPS files that are dragged to the server window for printing cannot contain the “/” character anywhere in the filename or in the directory path for the EPS file. The directory path shows the location of the EPS file on the hard disk. It includes all directories or folders starting with the hard disk name, and ending with the name of the directory or folder that contains the EPS file.

### ***Margins for Graphics Files***

EPS and TIFF files printed with the “Scale to Paper Size” option selected always print with 9mm margins on all sides, regardless of the copier or selected paper size.

## Setting the Paper Size for Graphic Files

When you drag a graphic file (such as an EPS or TIFF file) to the Hold queue in the Splash Server window, a dialog box appears so you can select print options for the file. There are two ways to select a paper size for the file:

- click Graphic in the dialog box, then select a paper size from the “Paper” menu, or
- click Pages in the dialog box, then choose “Force Paper Size to” under Paper Size Handling and select a paper size from the menu.

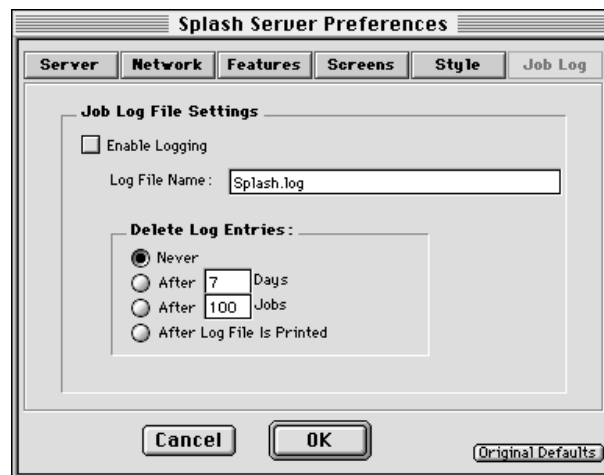
If you select one paper size for the file in the Graphic options, and another paper size in the Pages options, the document will print incorrectly at the copier.

## Starting a Log File

The Splash log file records information about each print job. If you quit the Splash Server application, or if the Macintosh restarts, the log file automatically starts recording as soon as the Server application starts up again. The log file is located in the Splash Folder. If you move the file “Splash.log” out of the Splash Folder, the server automatically begins a new log file.

To start a log file:

1. In the Splash Server application, choose Preferences from the Server menu. The Splash Server Preferences appears.
2. Click **Job Log** in the Splash Server Preferences. The Log File options appear.





3. Select the **Enable Logging** checkbox to create a server log file and to begin recording jobs in the log.
4. Type a name for the log file. The default name is “Splash.log”.
5. Select a button under **Delete Log Entries After** to specify how long Splash maintains the current print log file.
6. Click OK.

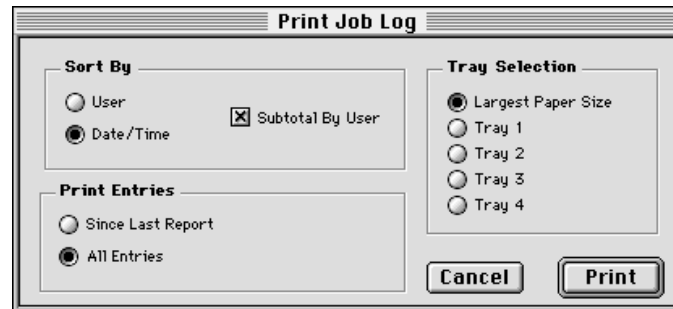
The log file is saved every time a print job is completed. You can view the log file in any application that reads text files, or you can import the log file into a spreadsheet application for billing purposes.

### ***Printing the Job Log***

Choose Print Log from the File menu to print the Splash Server job log file.



Splash displays a window with options for printing the job log.



The Print Job Log options let you sort job information by customer or by date, and can add subtotal information for each customer. You can print all entries in the job log, or only the entries added since the last job log printed. Select a paper source for the job log then click **Print**.

When you choose this server command, Splash applies special formatting to the information in the Splash.log file and prints an easy-to-read report at the copier. The log file report automatically groups print jobs by user and contains the following fields for each job:

- **User Name** shows the network identity of the client that sent the job to the printer/copier
- **Document Name** shows the name of the file sent to the printer/copier
- **Status** indicates whether the job was completed or, for example, deleted or placed on hold
- **Date** indicates the date that the job was sent to the printer/copier
- **Start Time** shows the time that Splash started processing the job
- **Elapsed Time** the total time (in seconds) required to print the job; starts from the time the job begins to be received at the server, ends at the time printing completes at the copier
- **Process Time** shows time CPSI spent processing (RIPping) the job, in seconds
- **Color Model** shows whether the job was printed in grayscale or color
- **Manual Feed** shows whether the bypass tray was used in the job
- **Paper Type** shows the type of paper used for a job printed to the bypass tray
- **Page Size** shows the page size on which the job was printed
- **Pages Rendered** shows the number of pages in the document
- **Color Pages Printed** shows the number of pages printed in color
- **Black Pages Printed** shows the number of pages that used black ink only
- **Cover Page** shows if a cover page was printed for the job
- **Job Ticket** shows information entered in the Document Comment field at the printer driver

### ***Job Log Notes***

If you select the largest available paper size for printing the Job Log, and the paper size is available in two different trays, the Job Log may print using paper from both paper trays.

## Adding Fonts to the Splash Server

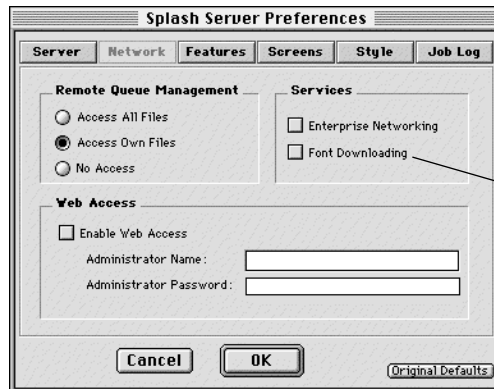
The Splash Server provides 35 Roman PostScript fonts for use with your print jobs. (See the *Splash Reference* on-line manual for a complete list of the fonts provided with Splash.) Print jobs that use the PostScript fonts provided with Splash print faster because these fonts are resident at the printer and are not downloaded with the print job. If you frequently use fonts that were not provided with Splash, you can download these fonts to the Splash Server to speed up printing.

You can use any PostScript font downloader utility to manage fonts on the Splash Server. Splash provides a simple font downloader utility from Adobe. The utility is located in the Splash Utilities folder on the Splash Server hard disk. You can download fonts to Splash at the server computer or from any AppleTalk client.

## Enabling Font Downloading at the Splash Server

Before you can download fonts to the Splash you must enable font downloading in the Splash Server Preferences. To do this:

1. In the Splash Server application choose **Preferences** from the Server menu, then click **Network** at the top of the Preferences window. The Splash Network preferences appear.



Select to  
download fonts

2. Select the **Font Downloading** checkbox.
3. Click **OK**.

The Splash Server is ready to load fonts.

While font downloading is taking place, the server cannot process print jobs. If the server is processing a job when font downloading begins, Splash delays the font downloading until the current job has completed processing. To avoid confusion, click **STOP** in the Splash Server window to halt print processing before font downloading begins.



As fonts download to Splash, the Server status area in the upper-right of the Splash Server window shows the message “Updating Fonts”. After fonts are downloaded this message continues to display while the Splash Server rebuilds its internal list of fonts. When the Server status returns to “Idle” the Splash Server is ready to receive and print jobs that use the downloaded fonts. Click **GO** in the Splash Server window to continue print processing.



*Note:* When Font Downloading is enabled, a new option appears in the AppleTalk Chooser. The new Chooser option is for downloading fonts only. To avoid confusion for clients who are attempting to print to Splash, disable Font Downloading in the Splash Server Preferences after you complete downloading fonts to Splash.

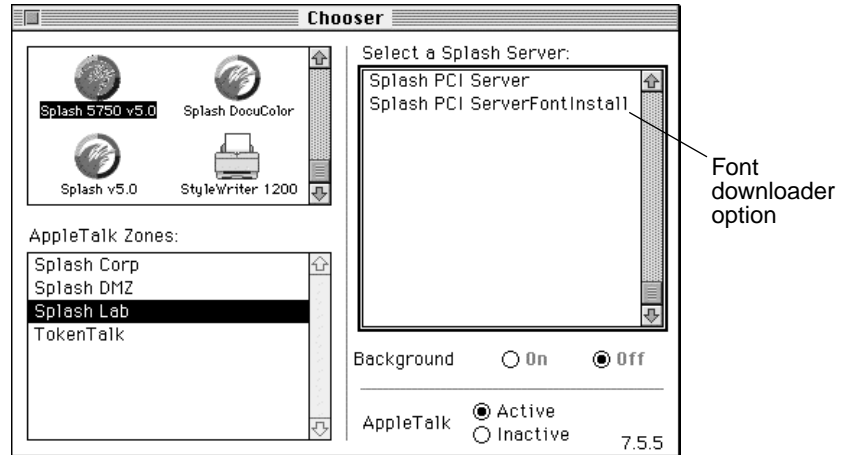
### ***Downloading Fonts to the Splash Server***

This section describes how to use the Adobe font downloader provided in the Splash Utilities folder on the Splash Server. Other font downloading utilities work also with the Splash Server. The steps for downloading fonts are the same whether you are at the Splash Server or at a client computer.

To download fonts with the Adobe font downloader:

1. Install the fonts on the Splash Server or client Macintosh as directed by the font manufacturer.
2. At the computer where you installed the fonts, open the MacOS Chooser (select Chooser from the Apple menu).

- Click on the Splash driver icon or the LaserWriter 8 icon. If your AppleTalk network is organized into zones, select the correct AppleTalk zone for the Splash Server.

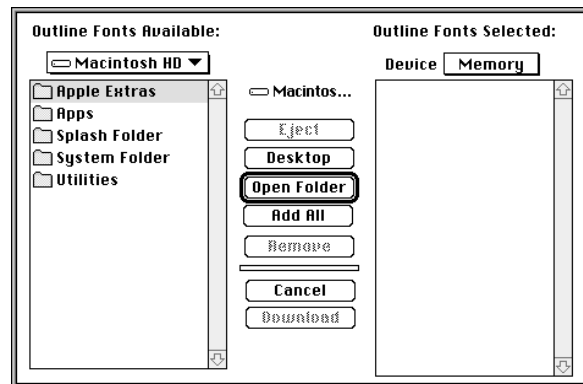


Two options appear in the list for the Splash Server. The **FontInstall** option is for downloading fonts to the server.

- Select the Splash Server FontInstall option in the Chooser, then close the Chooser window.
- Double-click the Adobe Downloader icon. The Downloader utility opens.

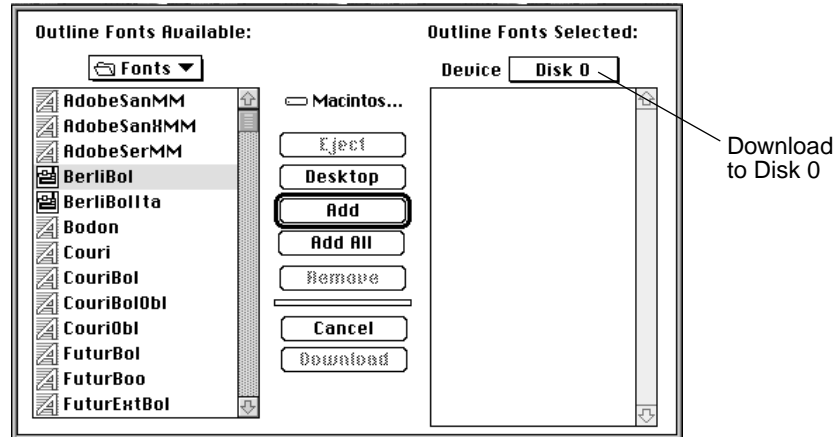


- Choose **Download Fonts** from the File menu. The downloader window appears.

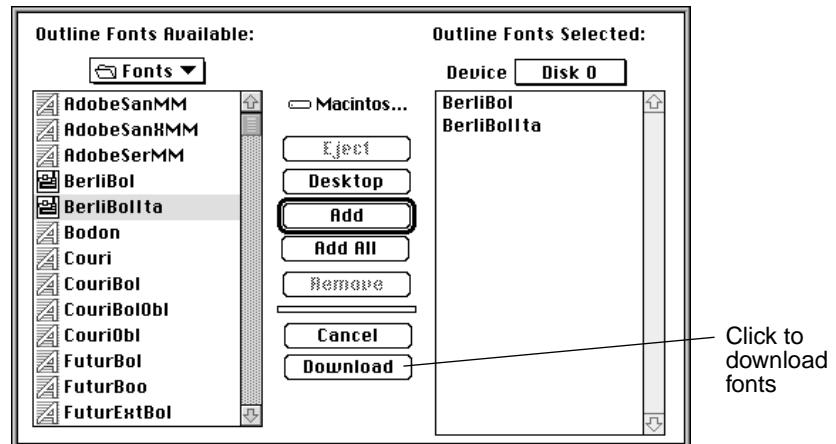


7. Use the menu on the left to navigate to the Fonts folder on your computer. The Fonts folder is located in the System Folder.

A list of the fonts installed on your computer appears on the left.



8. In the Device menu on the right, choose Disk 0.
9. Select a font you want to download to the Splash Server from the list on the left, then click **Add**. The font appears in the list on the right.
  - **Add All** moves all fonts to the list on the right.
  - To remove a font from the list on the right, select it then click **Remove**.
10. When you have finished selecting fonts to download, click **Download**.



The fonts you selected are downloaded to the Splash Server. The Adobe utility displays a status message as it downloads fonts to the Splash Server.



**Note:** Font downloading may take up to several minutes to complete.

When downloading is complete, a message appears.



11. Click OK. Choose Quit from the File menu to close the Downloader utility.

Font downloading to the Splash Server is complete.

### ***Font Downloading Notes***

#### ***Windows 3.1 Clients Connected With MACLAN Cannot Download Fonts to Splash***

Windows 3.1 clients that use Miramar System's MACLAN Connect software to connect to Splash cannot download fonts to the Splash Server with a font downloading utility. Fonts must be downloaded with print jobs.

#### ***Disk Space Limitations***

Fonts that you download to the Splash Server take up disk space. If you have limited hard disk space, limit the number of fonts you download.

## ***Splash Server Notes***

### ***Increasing the Maximum Number of Jobs That Can Be in the Print Queues***

The Splash Server application memory configuration allows up to 200 jobs in the print queues (all queues combined). When this limit is exceeded, NetWare, Drop Folder, and TCP/IP jobs will be received but not displayed or processed by the server.

To increase the number of jobs the Server application can manage in the print queues, you must allocate additional system memory to the Splash Server application. Print jobs each take about 10K of memory, so for example, to manage an additional 100 jobs in the print queues you must increase memory for the Splash Server application by 1MB.

To allocate additional memory to the Splash Server application:

1. Quit the Splash Server application.
2. Click the Splash Server icon to select it, then choose Get Info from the File menu in the MacOS Finder. The Splash Server Info dialog box appears.
3. Under “Memory Requirements” increase both the “Minimum Size” and the “Preferred Size” amounts, then close the Info dialog box.
4. Open the Splash Server application to resume print job processing.

When the Splash Server runs out of system memory it stops receiving jobs and may report PostScript errors for processing jobs.

### ***Disable Type Reunion Extension***

If you have the Type Reunion extension installed on the Splash Server, make sure that it is disabled. This extension can cause the server to quit unexpectedly.



## ***Running Other Applications on the Splash Server***

Before using other applications on the Splash Server computer, click the Stop button at the bottom of the Splash Server window. If the Splash Server is running, other applications operate at reduced performance levels. When processing is stopped, you can still print to the printer/copier from the Splash Server computer (local printing). When you have finished using other applications, exit these applications and click Go to continue Splash print processing. Any jobs sent to the Server will then begin to print.

## ***Print Job Name Notes***

When the LaserWriter 8 driver cover page “before document” option is selected for a print job, the job name that appears in the Splash Server print queue for the job is “Cover Page”. In the Document field of the Job Log the name of the job is “Cover Page”.

## ***RIP While Receive***

The Splash Server has an automatic RIP While Receive capability. This increases productivity significantly for all customers. Automatic RIP While Receive reduces print wait time by increasing RIP efficiency by ensuring that the CPSI is never idle while print jobs are present. RIP While Receive keeps track of all print jobs (including jobs that are in transit to the Splash Server) and directs CPSI processing of jobs as follows:

- The currently processing job has highest priority and is completed first.
- Completely spooled jobs are processed next. If there are two or more completely spooled jobs waiting, the jobs are processed in the order they were finished being received by the Splash Server. (If a smaller print job is completely received by the Server before a larger job that was sent ahead of it, the Server will process the smaller job first.)
- If no completely spooled jobs are waiting, RIP While Receive begins CPSI processing on a job as it is being received by the Splash Server. If two or more jobs are in transit to the Splash Server, the job that began transmitting to the server first is processed. All other jobs in transit to the server are automatically spooled.

If an error occurs (for example, the correct paper tray not installed), the job errors back into the queue when spooling completes. The job is restarted when the error is corrected—it is not necessary to resend the job from the client.

When a job is processed with RIP While Receive, instead of displaying the percentage of the file processed in the Server Status Window, it shows the number of kilobytes processed.

### ***Look Ahead Routing***

Splash allows multiple jobs to all be received and spooled simultaneously over the network, instead of being forced to wait when any other job is already spooling. This effectively eliminates productivity loss due to a blocking of the spooling access in heavy use environments. Each job being received from the network appears visually in the queue with an “R” next to it to indicate that it is currently being received over the network and spooled. The “R” disappears once the job has fully spooled and is active in the queue.

When multiple jobs are spooling, the first job to complete spooling is added at the top of the queue (even if it was not the first job sent). This allows small files to “jump” larger files that may still be spooling.

Because of Splash Look Ahead Routing, whenever the queue is empty, the job RIPs while receiving. If, at the time the job is sent, the queue is not empty, the job is spooled. Thus, with Splash, productivity is significantly increased for customers in all environments. Automatic RIP While Receive reduces printing time by virtually eliminating the RIP time for many jobs whenever the queue is empty.

### ***Job Processing Notes***

The Splash Server occasionally reports during job processing that color correction is being applied to a job for which color correction was not selected. This message is incorrect. Similarly, the server will sometimes report that toner limitation is being applied when this feature is not active. Disregard this message.

Occasionally, a print job will error with the message “Driver reported an error”. To determine the cause of the error, run Splash Preflight for the print job or drag the job to the Waiting queue.

### ***Customizing the Splash Color Control Strip***

Splash provides a control strip option that prints color patches and an EPS file on the output for print jobs with “Print Control Strip” selected at the printer driver. If desired, you can customize the control strip file that prints on jobs. For example, you can change the EPS file that prints on the job, or change the location or tint of the color patches.

*Note:* Editing the control strip file requires knowledge of the PostScript language.

The file “ControlStripOptions.ps” is located in the SupportPS folder within the Splash Folder on the Splash Server computer. The control strip file is in text-based PostScript and includes comments that explain how to make changes to the file. You can open and edit the PostScript file with any text-based editor, such as SimpleText.

### ***Switching Network Protocols for the Splash Server***

Before you switch network protocols (from EtherTalk to LocalTalk for example), quit the Splash Server application to avoid disrupting EtherTalk connections. If you do not do this, the Splash Server application can freeze when the network protocol is switched. You must restart the Splash Server and open the Server application to resume printing.

### ***Disabling EtherTalk***

To disable EtherTalk on the Splash Server, point to Control Panels in the Apple menu, then drag to choose the AppleTalk control panel. Choose “Printer Port” or “Modem Port” in the Connect via menu to switch the AppleTalk network from EtherTalk to LocalTalk. (This does not interfere with the ability to print to Splash from Novell print queues with Splash NetWare Direct. Print jobs will resume downloading to Splash from Novell NetWare print queues after the Splash Server is restarted.)

### ***Server Disk Full***

If the Splash Server hard disk becomes full, a print job sent from a client will appear in the Error queue with an “R” to indicate that it is being received by the server. At the client computer, a message stating that the server hard disk is full appears. When the job is canceled at the client, the job disappears from the Error queue at the server.

### ***Servers With Many Fonts Installed***

If you add a large number of after market fonts to your Splash Server, you may need to increase memory for the Server application to start up correctly. To do this, close the Server application, select the icon and choose Get Info from the Finder File menu and increase memory. See your Apple documentation for information.

### ***Splash Server Troubleshooting Notes***

If the Splash Server reports that the paper size for a print job is not available, and you have verified that the paper is loaded in a tray at the copier, check the status message at the copier for more information. Also, verify that the copier is turned on, and that the Splash cable is connected to both the copier and the Splash Server computer.

### ***Installer Notes***

If you use the Splash Installer to remove the Splash software from the server computer, the Installer may show a message that reports the software removal was unsuccessful. This message appears when spool files or TIFF files are present in the Spool Folder or TIFF Folder when you attempt to remove the Splash software. However, the Splash Server application was successfully removed from the computer's hard disk.

### ***Job Previews Notes***

The preview image for a print job may disappear when an error dialog box displays at the Splash Server.

Occasionally the Splash Server will not show the correct preview image for a job that has not been processed (RIPped) or a job in the Error queue.

### ***PostScript Error Reported for a Successful Print Job***

In rare cases, a job will print correctly, complete with cover page, then the job will error back into the Server queue with a PostScript error. You can delete the job from the Server queue.

# Index

## A

---

Access All Files option 48

Access Own Files option 48

Acquire plug-in 11, 14, 26

Active status 37

Adobe Downloader utility 61

Adobe Illustrator 14

Adobe PageMaker 14

Adobe Photoshop

- compatibility 14
- Export plug-in 11
- file format vs. TIFF file format 28
- file size 29
- memory requirements/  
recommendations 31
- scanned image storage 27
- separation tables for Splash 10
- Splash Acquire plug-in 11, 14, 26
- Splash Export plug-in 14, 26

Adobe Roman fonts 12

Allow Copier Interrupt option 46

Always Hold Incoming Jobs option 45

Angle, screening 51

Application Defined screening 51

Automatic Tray Switching, disabling 25

## C

---

Calibration application 12

Canceling a print job 40

Client 15

Client software 25

CMYK profiles, custom 12

CMYK profiles, setting 53

CMYK separations for  
Adobe Photoshop 10

Color Central Lite

- note 27
- Sampler application 31

Color Control Strip, editing 66

Color correction 10, 15, 16

Color correction, setting  
CMYK profiles 53

ColorCal 12

ColorSync profiles for Splash 10

Composite Spot Colors 50

Compress Save-As-TIFF Files option 46

Connected To option 45

Continual Print feature 11

Control strip 66

Copier identification at Splash Server 45

Copier status 37

Cover Page, printing 45

Current Defaults button 39

Custom screening 51

## **D**

---

Default print job settings 40

Deleting print jobs 40

DIC inks 50

Disk drive, adding an external drive 29

Disk size, Splash Server 27

Downloading fonts to server 59

Drop folder 12, 54

Drop printing files to Splash 54

## **E**

---

Emulated LPI 51

Enterprise Networking 47

EPS file

- default print settings 41

- filename restrictions 55

- paper size 56

- print margins 55

- printing 54

Error queue 37

Error Timeout option 46

Errors, checking for with Preflight 42

EtherTalk 67

Export plug-in 11, 14, 26

External hard disk drive 29

## **F**

---

Font Downloading option 48, 59

Fonts

- provided with Splash 12

Fonts and disk space 63

Fonts, adding to server 59

Force Paper Size option 41

Frequency, screening 51

## **G**

---

GO button 37

Graphic files

- default print options 41

- printing 54

## **H**

---

Hard disk size, Splash Server 27

Hard drive, external 29

Hold button 37

Hold queue 37

## **I**

---

ICC color profiles 10

## **J**

---

- Job Info window 39
- Job Ticketing for Macintosh clients 11
- JPEG files 12

## **L**

---

- LaserWriter 8 cover page 65
- Local printing 15
- LocalTalk 67
- Log file
  - description 12
  - field descriptions 58
  - maintaining the log 57
  - starting a new log 56
- Look Ahead Routing 12, 66
- LPR printing setup 25
- LPR/LPD printing to Splash 10

## **M**

---

- Macromedia FreeHand 14
- Manuals, on-line 17
- Map A4/Letter and A3/Tabloid option 46
- Memory configuration 64
- Microsoft Excel 14
- Microsoft PowerPoint 14
- Microsoft Word 14
- Moving print jobs 38

## **N**

---

- NetWare Direct
  - introduction 10
  - minimum memory configuration 31
  - with EtherTalk 67
- Network printing 15
- Network protocols, switching 67
- Network setup 25
- Network status 37
- No Access option 48
- Node 15
- Novell NetWare
  - introduction 10
  - print queues 67
- Novell printing setup 25

## **O**

---

- Original Defaults button 39

## **P**

---

- PANTONE inks 50
- Paper size for EPS and TIFF files 56
- Paper tray status 37
- PostScript
  - error checking 42
  - file printing 54
- PostScript error, job remains on Server 28

PostScript file  
    default print settings 41  
    printing 12  
    printing with Drop folder 54

Preflighting print jobs 12, 42

Preview image 68

Print Cover Page option 45

Print jobs  
    default settings for 42  
    maximum number allowed in  
    server queues 64  
    spooling at the server 16  
    viewing options selected for 39

Print processing on Splash Server 15

Print queue color options 52

Print queue management 48

Printer drivers  
    Splash 15  
    Windows 10

Printing  
    preventing client printing 36

Printing activity log file 12

Product registration 22

Progressives 11, 50

## **Q**

---

QuarkXPress 14

## **R**

---

Raster image processing (RIP) 16

Registration number 22

Remote Queue Management options 48

Replacing the Splash Server internal  
disk drive 29

RIP While Receive 11, 65

RIP, definition 9

Running other applications on  
Splash Server 14

## **S**

---

Save as TIFF 11, 27

Scale to Paper Size 41, 55

Scanned images 28

Scanning plug-in 11, 14, 26

Screening Method options 51

SCSI addresses 29

Selecting print jobs 38

Separations 11

Serial number 23

Server Name, setting 45

Server status 37

Setting the timeout length for errors 46

Splash CD-ROM, on-line manuals 17

Splash client software 25



Splash Color Control Strip 66

Splash ColorCal, minimum memory configuration 31

Splash Key 20, 22, 32, 33

Splash on-line manuals 17, 34

Splash PCI 1280 Server 13

Splash PCI 640 Server 13

Splash PCI-E Server 13

Splash Server

- alias for 36
- changing the server name 45
- disk size 27
- memory requirements 31
- preferences 44
- print processing 15, 27
- registration number 22
- replacing the internal disk drive 29
- starting a log file 56
- system performance 27
- unpacking 20
- virtual memory 31

Splash Status DA 12

Spool file 11, 27

Spooling multiple jobs 66

Spot Function, screening 51

Starting and stopping the Server 37

Stochastic screening 51

STOP button 37

Stop Processing dialog box 38

Style options 52

System configuration, virtual memory 31

System memory and print jobs 64

## **T**

---

TCP/IP printing 10, 25

TIFF files

- default print settings 41
- format vs. Adobe Photoshop 28
- paper size 56
- print margins 55
- printing 54
- server disk space 27

Toner Limitation 49

Toyo inks 50

Trays status 37

Type Reunion 64

## **U**

---

Unprintable Files folder 54

Update Fonts 47

## **V**

---

Virtual memory 31

## **W**

---

Waiting queue 37

Web Access option 48

Web Print Queue Manager 12

Windows 3.1, printer driver 10

Windows 95, printer driver 10

Windows NT, printer driver 10

Workstation 15

## **X**

---

Xerox IFU Port Kit 13