



Xerox EX7750  
SERVER & CONTROLLER SOLUTIONS



# User Software Installation Guide

## About the Documentation

This manual is part of a set of Xerox EX7750 documentation that includes the following manuals for users and system administrators. Most are available as Acrobat PDF (Portable Document Format) files on the User Documentation CD.

- The *Quick Start Guide* summarizes the steps for configuring the Xerox EX7750 and printing. It also describes how to access the Adobe Acrobat PDF files on User Documentation CD.
- The *User Software Installation Guide* describes how to install software from the User Software CD and to enable users to print to the Xerox EX7750.
- The *Configuration Guide* explains basic configuration and administration of the Xerox EX7750 for the supported platforms and network environments. It also includes guidelines for setting up network servers to provide printing services to users.
- The *Printing Guide* describes the printing features of the Xerox EX7750 for users who send jobs from their computers.
- The *Color Guide* provides information on managing the color output of the Xerox EX7750. It explains how to take advantage of the ColorWise® color management system, as well as features in ColorWise Pro Tools.
- The *Fiery Color Reference* addresses concepts and issues associated with managing color output of the Xerox EX7750. In addition, it offers information on printing color documents from popular Microsoft Windows and Apple Mac OS applications.
- The *Job Management Guide* explains the functions of the job management utilities, and how you can use them to monitor and control jobs on the Xerox EX7750. This manual is intended for a user with the necessary access privileges who monitors and manages job flow, and troubleshoots problems that may arise.
- *Customer Release Notes* provide last-minute product information and workarounds for some of the problems you may encounter.

Copyright © 2004 Electronics for Imaging, Inc. All rights reserved.

This product documentation is protected by copyright, and all rights are reserved. No part of it may be reproduced or transmitted in any form or by any means for any purpose without express prior written consent from Electronics for Imaging, Inc. ("EFI"), except as expressly permitted herein. Information in this document is subject to change without notice and does not represent a commitment on the part of EFI.

This product documentation is provided in conjunction with the EFI software ("Software") and any other EFI product described in this documentation. The Software is furnished under license and may only be used or copied in accordance with the terms of the Software License Agreement set forth below.

## Patents

This product may be covered by one or more of the following U.S. Patents:

4,716,978, 4,828,056, 4,917,488, 4,941,038, 5,109,241, 5,170,182, 5,212,546, 5,260,878, 5,276,490, 5,278,599, 5,335,040, 5,343,311, 5,398,107, 5,424,754, 5,442,429, 5,459,560, 5,467,446, 5,506,946, 5,517,334, 5,537,516, 5,543,940, 5,553,200, 5,563,689, 5,565,960, 5,583,623, 5,596,416, 5,615,314, 5,619,624, 5,625,712, 5,640,228, 5,666,436, 5,745,657, 5,760,913, 5,799,232, 5,818,645, 5,835,788, 5,859,711, 5,867,179, 5,940,186, 5,959,867, 5,970,174, 5,982,937, 5,995,724, 6,002,795, 6,025,922, 6,035,103, 6,041,200, 6,065,041, 6,112,665, 6,116,707, 6,122,407, 6,134,018, 6,141,120, 6,166,821, 6,173,286, 6,185,335, 6,201,614, 6,215,562, 6,219,155, 6,219,659, 6,222,641, 6,224,048, 6,225,974, 6,226,419, 6,238,105, 6,239,895, 6,256,108, 6,269,190, 6,271,937, 6,278,901, 6,279,009, 6,289,122, 6,292,270, 6,299,063, 6,310,697, 6,321,133, 6,327,047, 6,327,050, 6,327,052, 6,330,071, 6,330,363, 6,331,899, 6,340,975, 6,341,017, 6,341,018, 6,341,307, 6,347,256, 6,348,978, 6,356,359, 6,366,918, 6,369,895, 6,381,036, 6,400,443, 6,429,949, 6,449,393, 6,476,927, 6,490,696, 6,501,565, 6,519,053, 6,539,323, 6,543,871, 6,546,364, 6,549,294, 6,549,300, 6,550,991, 6,552,815, 6,559,958, 6,572,293, 6,590,676, 6,606,165, 6,633,396, 6,636,326, 6,643,317, 6,647,149, 6,657,741, 6,662,199, 6,678,068, 6,707,563, 6,741,262, 6,748,471, 6,753,845, 6,757,436, 6,757,440, RE33,973, RE36,947, D341,131, D406,117, D416,550, D417,864, D419,185, D426,206, D439,851, D444,793.

## Trademarks

Auto-Count, ColorCal, ColorWise, Command WorkStation, DocBuilder Pro, EDOX, EFI, Fiery, the Fiery logo, Fiery Driven, the Fiery Driven logo, Fiery Spark, MicroPress, OneFlow, Printcafe, PrinterSite, PrintMe, Prograph, Proteus, RIP-While-Print, Splash, and Spot-On are registered trademarks of Electronics for Imaging, Inc. in the U.S. Patent and Trademark Office and/or certain other foreign jurisdictions. Bestcolor is a registered trademark of Best GmbH in the U.S. Patent and Trademark Office.

ADS, AutoCal, Balance, Build, Digital StoreFront, DocStream, Fiery Link, Fiery Prints, FreeForm, Hagen, Intelligent Device Management, Logic, PrintFlow, PrintSmith, PrintSmith Site, PSI, PSI Flexo, RIPChips, Scan, SendMe, VisualCal, WebTools, the EFI logo, the Fiery Prints logo, and Essential to Print are trademarks of Electronics for Imaging, Inc. Best, the Best logo, Colorproof, PhotoXposure, Remoteproof, and Screenproof are trademarks of Best GmbH.

All other terms and product names may be trademarks or registered trademarks of their respective owners, and are hereby acknowledged.

## Legal Notifications

APPLE COMPUTER, INC. ("APPLE") MAKES NO WARRANTIES, EXPRESS OR IMPLIED, INCLUDING WITHOUT LIMITATION THE IMPLIED WARRANTIES OF MERCHANTABILITY AND FITNESS FOR A PARTICULAR PURPOSE, REGARDING THE APPLE SOFTWARE. APPLE DOES NOT WARRANT, GUARANTEE, OR MAKE ANY REPRESENTATIONS REGARDING THE USE OR THE RESULTS OF THE USE OF THE APPLE SOFTWARE IN TERMS OF ITS CORRECTNESS, ACCURACY, RELIABILITY, CURRENTNESS, OR OTHERWISE. THE ENTIRE RISK AS TO THE RESULTS AND PERFORMANCE OF THE APPLE SOFTWARE IS ASSUMED BY YOU. THE EXCLUSION OF IMPLIED WARRANTIES IS NOT PERMITTED BY SOME STATES. THE ABOVE EXCLUSION MAY NOT APPLY TO YOU.

**IN NO EVENT WILL APPLE, ITS DIRECTORS, OFFICERS, EMPLOYEES OR AGENTS BE LIABLE TO YOU FOR ANY CONSEQUENTIAL, INCIDENTAL, OR INDIRECT DAMAGES (INCLUDING DAMAGES FOR LOSS OF BUSINESS PROFITS, BUSINESS INTERRUPTION, LOSS OF BUSINESS INFORMATION, AND THE LIKE) ARISING OUT OF THE USE OR INABILITY TO USE THE APPLE SOFTWARE, EVEN IF APPLE HAS BEEN ADVISED OF THE POSSIBILITY OF SUCH DAMAGES. BECAUSE SOME STATES DO NOT ALLOW THE EXCLUSION OR LIMITATION OF LIABILITY FOR CONSEQUENTIAL OR INCIDENTAL DAMAGES, THE ABOVE LIMITATIONS MAY NOT APPLY TO YOU.** Apple's liability to you for actual damages from any cause whatsoever, and regardless of the form of the action (whether in contract, tort [including negligence], product liability, or otherwise), will be limited to \$50.

PANTONE® Colors displayed in the Software or in the documentation may not match PANTONE-identified standards. Consult current PANTONE Color Publications for accurate color. PANTONE® and other Pantone, Inc. trademarks are the property of Pantone, Inc. © Pantone, Inc., 2001. Pantone, Inc. is the copyright owner of PANTONE color data and/or software.

This product includes software developed by the Apache Software Foundation ([www.apache.org](http://www.apache.org)).

#### **FCC Information**

WARNING: FCC Regulations state that any unauthorized changes or modifications to this equipment not expressly approved by the manufacturer could void the user's authority to operate this equipment.

Refer to the Class Compliance sticker affixed to the back of your Fiery (or, in the case of embedded systems, to the sticker affixed to the print engine) to identify the appropriate classification (A or B, below) for this product.

#### **Class A Compliance**

This equipment has been tested and found to comply with the limits for a Class A digital device, pursuant to Part 15 of the FCC Rules. These limits are designed to provide reasonable protection against harmful interference when the equipment is operated in a commercial environment. This equipment generates, uses, and can radiate radio frequency energy and, if not installed and used in accordance with the instruction manual, may cause harmful interference to radio communications. Operation of this equipment in a residential area is likely to cause interference, in which case the user will be required to correct the interference at his own expense.

#### **Industry Canada Class A Notice**

This Class A digital apparatus complies with Canadian ICES-003.

#### **Avis de Conformation Classe A de l'Industrie Canada**

Cet appareil numérique de la Classe A est conforme à la norme NMB-003 du Canada.

#### **Class B Declaration of Conformity**

This equipment has been tested and found to comply with the limits for a Class B digital device, pursuant to Part 15 of the FCC rules. These limits are designed to provide reasonable protection against harmful interference in a residential installation. This equipment generates, uses, and can radiate radio frequency energy and, if not installed and used in accordance with the instructions, may cause harmful interference to radio communications. However, there is no guarantee that interference will not occur in a particular installation.

If this equipment does cause harmful interference to radio or television reception, which can be determined by turning the equipment off and on, the user is encouraged to try to correct the interference by one or more of the following measures:

Reorient or relocate the receiving antenna.

Increase the separation between the equipment and receiver.

Connect the equipment into an outlet on a circuit different from that to which the receiver is connected.

Consult the dealer or an experienced radio/TV technician for help.

In order to maintain compliance with FCC regulations, shielded cables must be used with this equipment. Operation with non-approved equipment or unshielded cables is likely to result in interference to radio and TV reception. The user is cautioned that changes and modifications made to the equipment without the approval of the manufacturer could void the user's authority to operate this equipment.

#### **Industry Canada Class B Notice**

This Class B digital apparatus complies with Canadian ICES-003.

#### **Avis de Conformation Classe B de l'Industrie Canada**

Cet appareil numérique de la Classe B est conforme à la norme NMB-003 du Canada.

#### **RFI Compliance Notice**

This equipment has been tested concerning compliance with the relevant RFI protection requirements both individually and on a system level (to simulate normal operation conditions). However, it is possible that these RFI Requirements are not met under certain unfavorable conditions in other installations. It is the user who is responsible for compliance of his particular installation.

Dieses Gerät wurde sowohl einzeln als auch in einer Anlage, die einen normalen Anwendungsfall nachbildet, auf die Einhaltung der Funktstörbestimmungen geprüft. Es ist jedoch möglich, dass die Funktstörbestimmungen unter ungünstigen Umständen bei anderen Gerätekombinationen nicht eingehalten werden. Für die Einhaltung der Funktstörbestimmungen einer gesamten Anlage, in der dieses Gerät betrieben wird, ist der Betreiber verantwortlich.

Compliance with applicable regulations depends on the use of shielded cables. It is the user who is responsible for procuring the appropriate cables.

Die Einhaltung zutreffender Bestimmungen hängt davon ab, dass geschirmte Ausführungen benützt werden. Für die Beschaffung richtiger Ausführungen ist der Betreiber verantwortlich.

#### **CE Marking (Declaration of Conformity)**

This product complies with the following EU directives: 89/336/EEC, 73/23/EEC, and 93/68/EEC directives. This declaration is valid for the area of the European Union.

#### **SOFTWARE LICENSE AGREEMENT**

PLEASE READ THIS SOFTWARE LICENSE AGREEMENT ("LICENSE AGREEMENT") CAREFULLY. THIS LICENSE AGREEMENT IS A LEGAL AGREEMENT BETWEEN YOU AND ELECTRONICS FOR IMAGING, INC. ("EFI") REGARDING THE EFI SOFTWARE ("SOFTWARE"). BY INSTALLING, COPYING OR OTHERWISE USING THE SOFTWARE, YOU AGREE TO BE BOUND BY THIS LICENSE AGREEMENT. IF YOU DO NOT AGREE, DO NOT INSTALL, COPY, OR OTHERWISE USE THE SOFTWARE AND YOU MAY RETURN THE UNUSED SOFTWARE, WITH PROOF OF PAYMENT, FOR A FULL REFUND TO THE PLACE OF PURCHASE WITHIN THIRTY (30) DAYS OF THE PURCHASE DATE.

#### **License**

EFI grants you a limited, non-exclusive license to use the Software solely in accordance with the terms and conditions of this License Agreement, solely as specified in the EFI product documentation, and solely with the product(s) specified in the EFI product documentation ("Product(s)").

The term "Software" as used in this License Agreement shall mean the EFI software and all documentation, downloads, on-line materials, bug fixes, patches, releases, release notes, updates, upgrades, technical support materials, and information regarding the EFI software. The terms and conditions of this License Agreement shall apply to and govern your use of any such item to the extent that EFI does not provide a separate or additional written license agreement for such item.

The Software is licensed, not sold. You may use the Software solely for the purposes described in the EFI product documentation. You may not rent, lease, sublicense, lend, or otherwise distribute the Software or use the Software in any time sharing, service bureau, or similar arrangement.

You may not make or have made, or permit to be made, any copies of the Software or portions thereof, except one (1) backup or archive copy for the purposes permitted in this License Agreement; provided, however, that under no circumstances may you make or have made, or permit to be made, any copies of any portion of the Software that is included on any portion of the controller board or hardware of a product. You agree not to localize, translate, disassemble, decompile, decrypt, reverse engineer, discover the source code of, modify, create derivative works of, or in any way change any part of the Software.

#### **Intellectual Property Rights**

You acknowledge and agree that all rights, title, and interest, including all intellectual property rights, in and relating to the Software, all EFI Products, and all copies, modifications, and derivative works thereof, are solely owned by and shall remain with EFI and its suppliers. Except for the express limited license granted in this License Agreement, no right or license of any kind is granted. You receive no rights or license under any patents, copyrights, trade secrets, trademarks (whether registered or unregistered), or other intellectual property. You agree not to adopt, register, or attempt to register any EFI trademark or trade name or any confusingly similar mark, URL, internet domain name, or symbol as your own name or the name of your affiliates or products, and agree not to take any other action which impairs or reduces the trademark rights of EFI or its suppliers.

#### **Confidentiality**

The Software is confidential, proprietary information of EFI and you may not distribute or disclose the Software. You may, however, permanently transfer all of your rights under this License Agreement to another person or legal entity provided that: (1) such a transfer is authorized under all applicable export laws and regulations, including the laws and regulations of the United States, including the United States Export Administration Regulations; (2) you transfer to the person or entity all of the Software (including all copies, updates, upgrades, media, printed documentation, and this License Agreement); (3) you retain no copies of the Software, including no backup, archival, or other copies, however stored; and (4) the recipient agrees to all of the terms and conditions of this License Agreement.

#### **Termination**

Unauthorized use, copying, or disclosure of the Software, or any breach of this License Agreement will result in automatic termination of this license and will make available to EFI other legal remedies. In the event of termination, you must destroy all copies of the Software and all component parts thereof. All provisions of this License Agreement relating to confidentiality of the Software, disclaimers of warranties, limitation of liability, remedies, damages, governing law, jurisdiction, venue, and EFI's intellectual property rights shall survive any termination of this license.

#### **Limited Warranty and Disclaimer**

EFI warrants that the Software, if used as specified in the EFI product documentation, will perform substantially in accordance with the EFI product documentation for a period of ninety (90) days from the date of receipt. EFI makes no warranty or representation that the Software will meet your specific requirements, that the operation of the Software will be uninterrupted, secure, fault-tolerant, or error free, or that all defects in the Software will be corrected. EFI makes no warranty, implied or otherwise, regarding the performance or reliability of any other Products or services or any third party products (software or hardware) or services. THE INSTALLATION OF ANY THIRD PARTY PRODUCTS OTHER THAN AS AUTHORIZED BY EFI WILL VOID THIS

WARRANTY. USE, MODIFICATION, AND/OR REPAIR OF THE SOFTWARE OR AN EFI PRODUCT OTHER THAN AS AUTHORIZED BY EFI WILL VOID THIS WARRANTY. FURTHER, THIS LIMITED WARRANTY IS VOID IF A PROBLEM WITH THE SOFTWARE ARISES FROM ACCIDENT, ABUSE, MISAPPLICATION, ABNORMAL USE, VIRUS, WORM, OR SIMILAR CIRCUMSTANCE.

TO THE MAXIMUM EXTENT PERMITTED BY APPLICABLE LAW, EXCEPT FOR THE EXPRESS LIMITED WARRANTY SET FORTH ABOVE ("LIMITED WARRANTY"), EFI MAKES AND YOU RECEIVE NO REPRESENTATIONS OR WARRANTIES RELATING TO THE SOFTWARE, ANY PRODUCT AND/OR ANY SERVICES, WHETHER EXPRESS, IMPLIED, STATUTORY, OR IN ANY OTHER PROVISION OF THIS AGREEMENT OR ANY OTHER COMMUNICATION. EFI SPECIFICALLY DISCLAIMS ALL IMPLIED WARRANTIES, REPRESENTATIONS, AND CONDITIONS, INCLUDING THOSE OF SECURITY, MERCHANTABILITY, FITNESS FOR A PARTICULAR PURPOSE AND NONINFRINGEMENT OF THIRD PARTY RIGHTS. THERE IS NO WARRANTY OR REPRESENTATION THAT THE OPERATION OF THE SOFTWARE AND/OR ANY PRODUCT WILL BE UNINTERRUPTED, FAULT-TOLERANT, SECURE, OR ERROR-FREE. TO THE MAXIMUM EXTENT PERMITTED BY APPLICABLE LAW, YOUR SOLE AND EXCLUSIVE REMEDY, AND THE ENTIRE LIABILITY OF EFI AND ITS SUPPLIERS, RELATING TO ANY AND ALL SOFTWARE, PRODUCTS, SERVICES, AND/OR APPLICABLE WARRANTIES SHALL BE, AT EFI'S OPTION, (1) TO REPAIR OR REPLACE THE SOFTWARE THAT DOES NOT MEET THE LIMITED WARRANTY; OR (2) PROVIDE A REFUND OF THE PRICE PAID (IF ANY) FOR THE SOFTWARE THAT DOES NOT MEET THE LIMITED WARRANTY. EXCEPT AS PROVIDED IN THIS SECTION, EFI AND ITS SUPPLIERS SHALL PROVIDE NO REFUNDS, RETURNS, EXCHANGES, OR REPLACEMENTS.

#### **Limitation of Liability**

TO THE MAXIMUM EXTENT PERMITTED BY APPLICABLE LAW, YOU AGREE THAT THE ENTIRE LIABILITY OF EFI AND ITS SUPPLIERS FOR ALL CLAIMS RELATED TO ANY SOFTWARE, PRODUCT, SERVICES, AND/OR THIS LICENSE AGREEMENT, REGARDLESS OF THE FORM OF ACTION (WHETHER IN CONTRACT, TORT, UNDER STATUTE, OR OTHERWISE), SHALL BE LIMITED TO THE AMOUNT PAID BY YOU, IF ANY, FOR THE EFI SOFTWARE. YOU AGREE THAT SUCH AMOUNT IS SUFFICIENT TO SATISFY THE ESSENTIAL PURPOSE OF THIS LICENSE AGREEMENT AND THAT SUCH A LIABILITY IS A FAIR AND REASONABLE ESTIMATE OF ANY LOSS AND DAMAGE LIKELY TO BE SUFFERED IN THE EVENT OF ANY WRONGFUL ACT OR OMISSION BY EFI AND/OR ITS SUPPLIERS. TO THE MAXIMUM EXTENT PERMITTED BY APPLICABLE LAW, IN NO EVENT SHALL EFI AND ITS SUPPLIERS BE LIABLE FOR COST OF PROCUREMENT OF SUBSTITUTE SOFTWARE, PRODUCTS OR SERVICES, LOST PROFITS OR DATA, THIRD PARTY CLAIMS, OR ANY SPECIAL INDIRECT, RELIANCE, CONSEQUENTIAL, EXEMPLARY, PUNITIVE, OR INCIDENTAL DAMAGES, HOWEVER CAUSED AND ON ANY THEORY OF LIABILITY, RELATED TO ANY SOFTWARE, PRODUCT, SERVICES AND/OR THIS LICENSE AGREEMENT. THIS LIMITATION SHALL APPLY EVEN IF EFI AND ITS SUPPLIERS HAVE BEEN ADVISED OF THE POSSIBILITY OF SUCH DAMAGES. YOU AGREE THAT THE PRICE OF THE EFI SOFTWARE REFLECTS THIS ALLOCATION OF RISK. YOU ACKNOWLEDGE AND AGREE THAT THE FOREGOING LIMITATIONS OF LIABILITY AND DISCLAIMERS FORM AN ESSENTIAL ELEMENT OF THIS LICENSE AGREEMENT, WITHOUT WHICH EFI WOULD NOT HAVE LICENSED THE EFI SOFTWARE TO YOU.

BECAUSE SOME JURISDICTIONS DO NOT ALLOW SOME OR ALL OF THE EXCLUSIONS AND/OR LIMITATIONS OF LIABILITY HEREIN, SOME OR ALL OF THE ABOVE EXCLUSIONS AND LIMITATIONS MAY NOT APPLY TO YOU.

You are hereby notified that Adobe Systems Incorporated, a Delaware corporation located at 345 Park Avenue, San Jose, CA 95110-2704 ("Adobe") is a third-party beneficiary to this License Agreement to the extent that this License Agreement contains provisions which relate to your use of any software, font programs, typefaces, and/or trademarks licensed or supplied by Adobe. Such provisions are made expressly for the benefit of Adobe and are enforceable by Adobe in addition to EFI. ADOBE WILL HAVE NO LIABILITY WHATSOEVER TO YOU FOR ANY ADOBE SOFTWARE OR TECHNOLOGY LICENSED HEREUNDER.

#### **Export Restrictions**

The Software and EFI Products are subject to the export laws and regulations of the United States, including the United States Export Administration Regulations. The license granted to you herein is conditioned upon your compliance with all applicable export laws and regulations, including the export laws and regulations of the United States. You represent and agree that you will not use, disclose, distribute, transfer, export, or re-export any portion of the Software or any EFI Product in any form in violation of any applicable export laws and regulations, including the export laws and regulations of the United States.

#### **U.S. Government Restricted Rights**

Use, duplication, or disclosure of the Software by the United States Government is subject to restrictions as set forth in FAR 12.212 or DFARS 227.7202-3 - 227.7202-4 and, to the extent required under U.S. federal law, the minimum restricted rights as set out in FAR 52.227-14, Restricted Rights Notice (June 1987) Alternate III(g)(3) (June 1987) or FAR 52.227-19 (June 1987). To the extent any technical data is provided pursuant to the Agreement, such data is protected per FAR 12.211 and DFARS 227.7102-2 and to the extent explicitly required by the U.S. Government, is subject to limited rights as set out in DFARS 252.227.7015 (November 1995) and DFARS 252.227-7037 (September 1999). In the event that any of the above referenced agency regulations are modified or superseded, the subsequent equivalent regulation shall apply. The name of the Contractor is Electronics for Imaging, Inc.

**Governing Law and Jurisdiction**

The rights and obligations of the parties related to this License Agreement will be governed in all respects by the laws of the State of California exclusively, as such laws apply to contracts between California residents performed entirely within California. The United Nations Convention on Contracts for the International Sale of Goods and any other similar convention does not apply to this License Agreement. For all disputes related to the Software, Products, Services, and/or this License Agreement, you consent to the exclusive personal jurisdiction and venue of the state courts in San Mateo County, California and the federal court for the Northern District of California.

**General**

This Agreement is the entire agreement held between us and supersedes any other communications or advertising with respect to the Software, Products, Services, and any other subject matter covered by this License Agreement. If any provision of the License Agreement is held invalid, such provision shall be deemed modified to the extent necessary to be enforceable and the other provisions in this License Agreement shall continue in full force and effect.

If you have any questions, see the EFI web site at [www.efi.com](http://www.efi.com).

Electronics for Imaging, Inc.  
303 Velocity Way  
Foster City, CA 94404  
USA





# Contents

## About the Documentation

### Introduction

<b>About this manual</b>	xi
<b>Specifications</b>	xii
<b>User software</b>	xiii
<b>WebTools</b>	xv
<b>System requirements</b>	xv

## Chapter 1: Installing User Software on a Windows Computer

<b>Setting up PostScript or PCL printing with Windows 2000/XP</b>	1-1
Installing the PostScript or PCL printer driver for Windows 2000/XP	1-2
Configuring installed options	1-5
Completing the Windows 2000/XP printer connection	1-8
<b>Installing Fiery utilities</b>	1-19
Adobe Acrobat	1-21
PitStop	1-22
<b>Using Fiery utilities for the first time</b>	1-23
Configuring the connection for Fiery utilities	1-24
Configuring the connection for EFI Fiery Mail Port	1-27
Configuring the connection for Command WorkStation	1-30
<b>Installing color files from the User Software CD</b>	1-34
Installing the ICC profiles on a Windows computer	1-35
Loading the monitor settings file	1-36
Loading the ICC printer device profile	1-37
Installing the printer description files for Windows	1-39

## Chapter 2: Installing User Software on a Mac OS Computer

<b>Setting up the EX7750 as a PostScript printer</b>	2-2
Setting up Mac OS 9 printer drivers and printer description files	2-2
Setting up Mac OS X v10.2 printer drivers and printer description files	2-5
<b>Installing EX7750 software and fonts</b>	2-11
Installing MRJ on your computer	2-12
Configuring a connection for ColorWise Pro Tools	2-14
Configuring a connection for Fiery Spooler	2-17
Configuring the connection for Fiery Downloader and Command WorkStation LE for Mac OS X	2-19
Fonts	2-22
<b>Installing color files from the User Software CD</b>	2-23
Loading ICC printer profiles	2-24
Loading the monitor settings file	2-25
Loading the ICC printer device profile	2-26

## Chapter 3: Downloading Installers with WebTools

<b>Setting up WebTools</b>	3-1
<b>Using the WebTools Installer</b>	3-2

## Chapter 4: Troubleshooting

<b>On a Windows computer</b>	4-1
Setting up printing on Windows 2000/XP computers	4-1
Problems with the Fiery utilities on Windows computers	4-1
<b>On a Mac OS computer</b>	4-2
Setting up the EX7750 in the Mac OS 9 Chooser	4-2
Setting up the EX7750 in the Mac OS X Print Center	4-2

## Index

## Introduction

This manual describes how to install user software for the Xerox EX7750, and how to set up printing from Microsoft Windows and Apple Mac OS computers. For information about setting up network servers and clients to use the Xerox EX7750, see the *Configuration Guide*. For general information about using the Phaser 7750, your computer, application software, or network, see the manuals that accompany those products.

**NOTE:** Illustrations of Windows software may not necessarily reflect the version of Windows that you use.

The EX7750 includes support for WebTools™ and software for Command WorkStation®/Command WorkStation LE, which allow an operator to manage all jobs sent to the EX7750. Although it may not be the case at all sites, the documentation for this product assumes the presence of an operator who controls and manages jobs sent by users from remote workstations.

## About this manual

This manual covers the following topics:

- Installing printer files on Windows and Mac OS computers
- Setting up printing connections on Windows and Mac OS computers
- Installing Fiery® utilities and other user software on Windows and Mac OS computers

## Specifications

- Supports the Fiery Advanced Controller Interface (FACI), which includes a monitor, a keyboard, and mouse
- Supports AppleTalk, TCP/IP, and IPX/SPX protocols simultaneously
- Supports Port 9100
- Supports unshielded twisted pair (Gigabit Ethernet 1000BaseTX, Fast Ethernet 100BaseTX, or Ethernet 10BaseT)
- Supports Adobe PostScript 3
- Supports PCL 6 printing (for Windows computers)
- Built-in ColorWise color management and NetWise networking management
- Supports Fiery utilities and WebTools (see following sections)
- Fiery utilities, including ColorWise Pro Tools, Fiery Downloader, Fiery Spooler (Mac only), and E-mail Port Monitor and Fiery Printer Delete Utility (both Windows only)
- WebTools, including Status, WebLink, WebDownloader, and Installer
- Command WorkStation (Windows only) software
- Command WorkStation LE (Mac OS X Native only) software
- Supports EFI Impose
- Supports E-mail printing

**NOTE:** Fiery utilities and EX7750 user software can be installed on the EX7750 from the User Software CD, using the FACI. Other third-party applications are not supported and may cause system problems.

## User software

EX7750 user software is provided on the User Software CD.

Adobe PostScript Printer Driver	Enables you to print to the EX7750 from Mac OS computers; also supports EX7750 and PostScript 3 features. Windows XP users should use the Microsoft PostScript Printer Driver provided with those operating systems.
PostScript Printer Description (PPD) file	For use with the PostScript printer driver that allows the EX7750 to appear in the Print and Page Setup dialog boxes of popular applications. The EX7750 PPDs provide information about the EX7750 and your Phaser 7750 to the application and printer driver you are using.
PostScript fonts (Mac OS only)	PostScript screen and printer fonts that correspond to the PostScript printer fonts installed on the EX7750. For a complete list of PostScript fonts installed on the EX7750, see Appendix B of the <i>Printing Guide</i> .
PCL Printer Driver	Enables you to print to the EX7750 from Windows computers; supports EX7750 PCL print features.
Fiery Downloader	Enables you to print PostScript files, PCL files, Encapsulated PostScript (EPS) files, TIFF version 6.0 files, and Portable Document Format (PDF) versions 1.2, 1.3, and 1.4 files directly to the EX7750 without opening the application in which they were created. You can also use it to manage the printer fonts installed on the EX7750.
ColorWise Pro Tools	ICC-open color management and calibration tools; enables you to edit and download ICC profiles.
Command WorkStation (Windows only)	Enables the operator to control the EX7750 functions from Windows computers. To use Command WorkStation, see the <i>Job Management Guide</i> .

Command WorkStation LE (Mac OS X Native Mode only)	Enables the operator to control EX7750 functions from Mac OS X Native computers. To use Command WorkStation LE, see the <i>Job Management Guide</i> .
EFI Fiery Mail Port (Windows only)	Enables you to send jobs to the EX7750 in the form of e-mail attachments by adding the Fiery Mail Port software as a printer port.
Adobe Acrobat and PitStop software (Windows only)	Adobe Acrobat and the PitStop Acrobat plug-in are for use with the Command WorkStation DocBuilder Pro feature. PitStop offers you enhanced PDF editing functions.
Adobe Acrobat and PitStop are provided on the Fiery DocBuilder Pro kit CD.	
Color management files	ICC (Windows) and ColorSync (Mac OS) color management files that enable you to maintain consistent color from your original artwork to the colors displayed on your monitor and then to the printed output.
Color reference files	Reference pages that you can print to view the range of colors available on your EX7750. For the most predictable color results, refer to these pages when defining colors in applications. For more information on color management, see the <i>Color Guide</i> .
Calibration files	Includes measurement files and targets that you can use with ColorWise Pro Tools.
MRJ (Mac OS only)	Mac OS Runtime for Java (MRJ) software is required by all Java-based Fiery utilities. If MRJ is not detected when you install these utilities, the MRJ installer is automatically launched from the User Software CD.

## WebTools

WebTools allow you to manage your EX7750 remotely from the Internet or from your company's intranet. You access WebTools from the WebTools home page.

WebTools	Summary	For more information
Status	Shows you the jobs currently processing and printing.	See the <i>Printing Guide</i> .
WebLink	Provides a link to another web page, provided you have a valid Internet connection.	See the <i>Printing Guide</i> and the <i>Configuration Guide</i> .
Installer	Allows you to download EX7750 printer file and other software installers directly from the server.	See Chapter 3.
WebDownloader	Allows you to download PostScript, PCL, EPS, and PDF files to the EX7750.	See the <i>Printing Guide</i> .

## System requirements

System requirements are described in detail in the printed *Quick Start Guide* provided in your media pack.

This page is intentionally blank.



## Chapter 1: Installing User Software on a Windows Computer

This chapter describes the procedures for installing software and setting up printing from a computer using a supported version of Windows. For the Windows versions supported, see the *Quick Start Guide*.

The general steps for installing the software are as follows:

- Install the PostScript printer driver or PCL printer driver and corresponding printer driver files and set up the printer driver to communicate with the EX7750.
- Install Fiery utilities and user software.
- Configure the connection for Fiery utilities and user software.
- Install Adobe Acrobat and PitStop software from the Fiery DocBuilder Pro CD on the designated Windows computer(s).
- Copy additional files from the User Software CD as required.

If you have other Fiery printer drivers already installed on your computer, use the Fiery Printer Delete Utility to remove them. For details, see “[Installing Fiery utilities](#)” on page 1-19 and “[To use Fiery Printer Delete Utility](#)” on page 1-23.

### Setting up PostScript or PCL printing with Windows 2000/XP

To set up the EX7750 as a PostScript or PCL printer, you must install the PostScript or PCL printer driver for Windows 2000/XP and the corresponding printer description files. You must also configure the print connection between the computer and the EX7750. If you are printing over a network, you must configure a network connection.

**NOTE:** The procedures for configuring the options for the PostScript and PCL printer drivers are similar. The following illustrations show the PostScript driver. Differences are noted.

## Installing the PostScript or PCL printer driver for Windows 2000/XP

The following procedure describes installing the printer driver from the User Software CD or from the Installer WebTool. Subsequent procedures describe setting up the print connection.

**NOTE:** To install the printer driver on a Windows 2000 computer, you must have Service Pack 4 installed on the computer. To install the printer driver on a Windows XP computer, you must have Service Pack 1 installed on the computer. Otherwise, a warning message alerts you to install the proper service pack after installation is complete.

**NOTE:** The following procedures use Windows XP illustrations; Windows 2000 differences are noted.

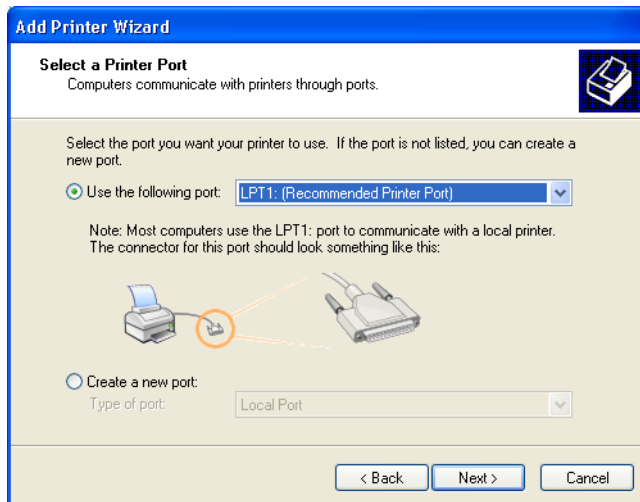
---

### TO INSTALL THE POSTSCRIPT OR PCL PRINTER DRIVER FOR WINDOWS 2000/XP

1. **On Windows 2000, click Start, choose Settings, and then choose Printers to display the Printers window.**  
**On Windows XP, click Start, choose Settings, and choose Printer and Faxes.**
2. **On Windows 2000, double-click the Add Printer icon and click Next.**  
**On Windows XP, click Add a printer under Printer Tasks.**
3. **Click Next in the Welcome window.**
4. **Specify printing using a Local printer and click Next.**

This procedure describes the installation of a local printer. You can modify the connection later, according to your network type.

5. Select LPT1: and click Next.



6. In the dialog box displaying lists of manufacturers and printers, click Have Disk.

The Install From Disk dialog box prompts you for the disk.

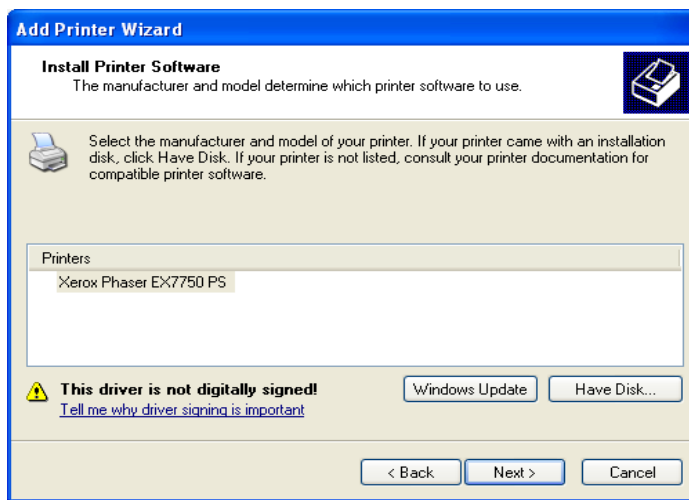
7. If you are installing from the User Software CD, insert it into the CD-ROM drive. Type in the name of the CD-Rom drive or browse to it (for example, D:\), and then to the English\Prntdrv\Ps\_drvr\Win\_2K\_XP folder or the English\Prntdrv\Pcl6\_drvr\Win\_2K\_XP folder.

If you are installing from the files you downloaded using the Installer WebTool, browse to English\prntdrv\Prntdrv\Ps\_drvr\Win\_2K\_XP or English\prntdrv\Prntdrv\Pcl6\_drvr\Win\_2K\_XP and click Open.

8. Make sure "Oemsetup.inf" or "Oemsetup" is selected and click Open.

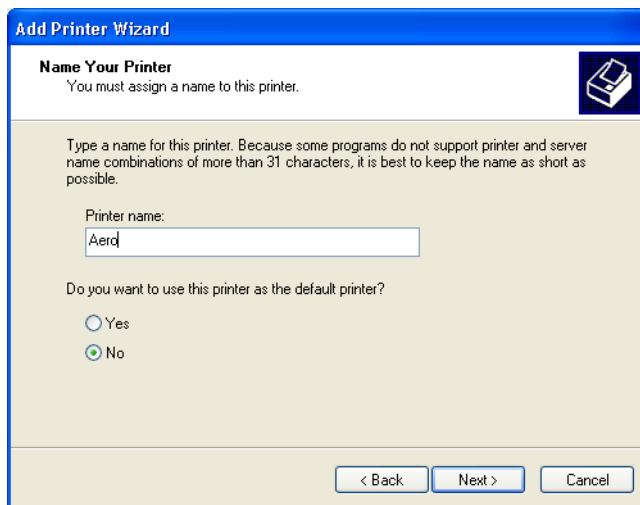
The path is displayed in the Install From Disk dialog box.

9. Verify that the path is correct and click OK.
10. Select the Xerox EX7750 as your printer and click Next.



11. Type a name for the printer in the Printer name field, choose whether you want to use this printer as the default printer, and click Next.

This name will be used in the Printers window and the queues window.



**12. Follow the instructions in the remaining dialog boxes.**

Choose whether to share this printer or not.

When asked whether to print a Test Page, select No.

**13. Click Finish.**

The necessary files are installed to your computer.

**NOTE:** If this is the first printer driver you are installing on the computer, you may be prompted to install files from the Windows 2000 CD. Insert the CD-ROM, browse to the win2000\english\i386 folder, and then click OK.

When installation is complete, the Printers window appears with an icon for the newly installed printer. You must now configure the options installed on your printer.

## Configuring installed options

After you have completed the printer driver installation, you must configure the EX7750 to reflect the options installed on the printer. This allows the EX7750 to take advantage of the printer options. You can configure the options manually; or for TCP/IP network connections, you can use the Two-Way Communication feature to configure the options automatically.

### Configuring installed options manually

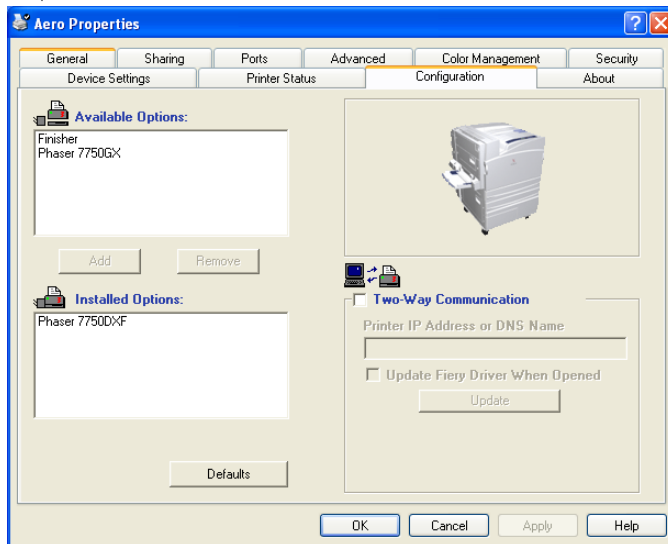
The following procedure describes how to manually configure the EX7750 for the options installed on the printer.

---

**TO CONFIGURE INSTALLABLE OPTIONS ON THE EX7750 FROM THE POSTSCRIPT PRINTER DRIVER FOR WINDOWS 2000/XP**

- 1. On Windows 2000, click Start, choose Settings, and then choose Printers.**  
**On Windows XP, click Start, choose Settings, and choose Printers and Faxes.**
- 2. Right-click the EX7750 icon and choose Properties from the file menu.**
- 3. Click the Configuration tab.**
- 4. Select an option from the Available Options list.**

5. Click Add to move the option to the Installed Options list.



**Finisher**—Not Installed, Installed

**Phaser 7750GX**—Not Installed, Installed

**Phaser 7750DX F**—Not Installed, Installed

6. Click OK to activate the current settings.

---

#### TO CONFIGURE INSTALLABLE OPTIONS ON THE EX7750 FROM THE PCL PRINTER DRIVER

1. On Windows 2000, click Start, choose Settings, and then choose Printers.  
On Windows XP, click Start, choose Settings, and choose Printers and Faxes.
2. Right-click the EX7750 icon, and choose Printing Preferences.
3. Click the Configuration tab and specify the options installed on the EX7750.
4. Select an installed option from the Available Options list, and click Add to move the option to the Installed Options list.
5. Click Apply, then click OK.

### Configuring installed options and updating print options settings automatically

If you have a TCP/IP-enabled network, you can automatically update your printer driver to reflect the options currently installed on the EX7750. When the printer driver is first installed, the installable options have default settings that were set up in EX7750 Setup or ColorWise Pro Tools. When you update the printer driver with the Two-Way Communication feature, you allow the EX7750 to complete the actual setting.

The Two-Way Communication feature also updates Expert Color Settings options to reflect the current color settings on the EX7750. To access the Expert Color Settings options, click the Expert Settings tab in the ColorWise print option bar of the Fiery printing tab of your printer driver. For more information, see the *Color Guide*.

---

#### SETTING UP TWO-WAY COMMUNICATION FOR POSTSCRIPT OR PCL PRINTER DRIVERS FOR WINDOWS 2000/XP

**NOTE:** The procedures for setting up Two-Way Communication for the PostScript printer drivers for Windows 2000/XP are similar. The following procedure displays Windows XP illustrations. Differences are noted in the text.

1. **On Windows 2000, click Start, choose Settings, and then choose Printers.**  
**On Windows XP, click Start, choose Settings, and choose Printers and Faxes.**
2. **In the Printers window, select the icon for the EX7750 PostScript printer driver.**
3. **For the PostScript printer driver, choose Properties from the File menu.**  
**For the PCL printer driver, choose Printing Preferences from the File menu.**
4. **Click the Configuration tab.**
5. **Select Two-Way Communication.**
6. **Enter the EX7750 IP address or DNS name.**
7. **If you want your printer driver to display the current settings when opened, select the Update Fiery Driver When Opened option, and then click Update.**

**NOTE:** To confirm that Two-Way Communication is enabled, click the About tab.

8. **To receive an e-mail notification after your job has been printed, select Enable E-mail Notification, and type in the e-mail address to which an e-mail notification is sent.**

You will also receive e-mail notification of any errors that occur during printing.

**NOTE:** Enable E-mail Notification is displayed only if Email Service is enabled at Setup.

**NOTE:** Make sure to clear the check box for Enable advanced printing features in the Advanced tab.

9. **Click OK.**

## Completing the Windows 2000/XP printer connection

To print from Windows 2000/XP, you must:

- Set up network servers, if any.
- Set up the EX7750 to accept print jobs from your computer.
- Configure a port on each Windows 2000/XP computer for the network type.

To do this	See
Configure the TCP/IP (LPR port) connection	<a href="#">“Completing the Windows 2000/XP TCP/IP and Port 9100 or LPR connection”</a> on page 1-8
Configure the IPX (Novell) connection	<a href="#">“Completing the Windows 2000/XP IPX (Novell) connection”</a> on page 1-13
Configure the IPP connection	<a href="#">“Setting up IPP printing with Windows 2000/XP”</a> on page 1-17

## Completing the Windows 2000/XP TCP/IP and Port 9100 or LPR connection

After you have installed the PostScript and printer driver files, complete the setup for the TCP/IP and LPR connection as follows:

- Prepare the EX7750 to accept print jobs using TCP/IP and LPR protocols.  
For details, see the [Configuration Guide](#).
- Enable LPD or Port 9100 from the EX7750 FACI. For details, see the [Configuration Guide](#).
- Configure the computer for the TCP/IP connection.



# 1

## 1-9 Setting up PostScript or PCL printing with Windows 2000/XP

Before you continue, contact the system administrator for the IP address assigned to the EX7750, as well as the subnet mask and the gateway address, if they are used.

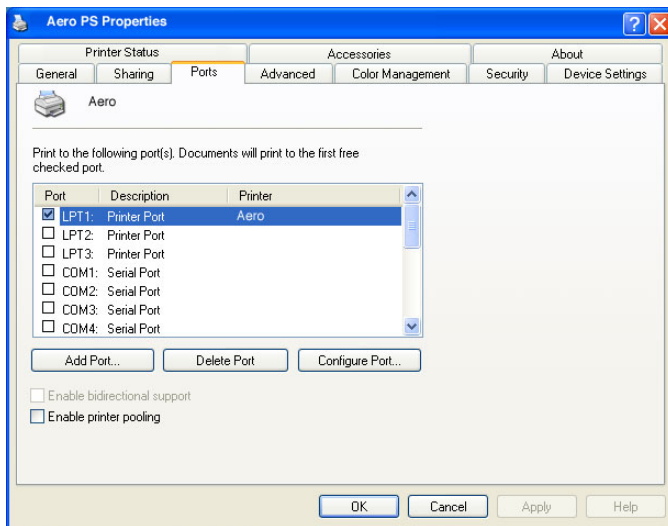
**NOTE:** You can also set up the LPR connection by installing Print Services for UNIX, which is supplied as an add-on Windows component with your Windows 2000/XP CD. For more information, see your Windows documentation.

---

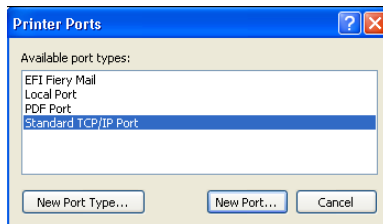
### TO SET UP TCP/IP AND PORT 9100 OR LPR CONNECTION FOR WINDOWS 2000/XP

**NOTE:** The following procedures use Windows XP illustrations.

1. Open the Properties dialog box for the EX7750 and click the Ports tab.
2. Click Add Port.



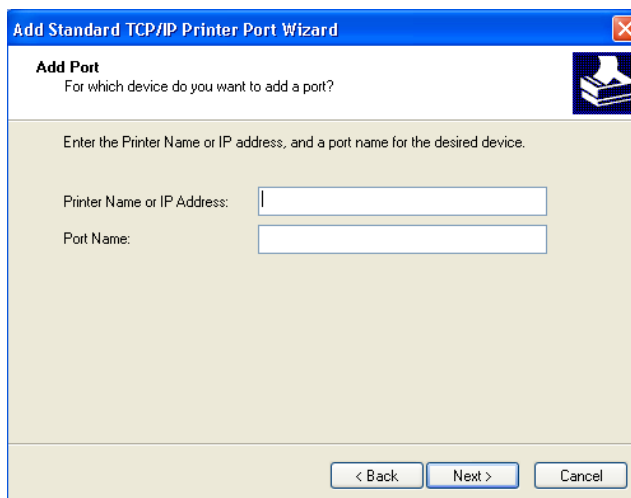
3. **Select Standard TCP/IP Port for Available port types and click New Port.**



4. **Click Next.**

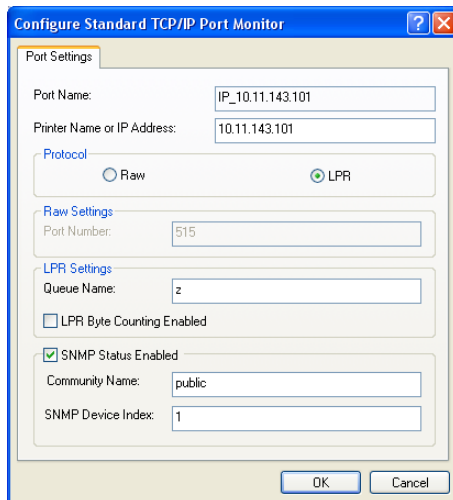
The Add Standard TCP/IP Printer Port Wizard dialog box appears.

5. **Type the IP address of the EX7750.**



6. **Click Next.**
7. **Make sure that Generic Network Card is selected as Standard for Device Type and click Next.**
8. **Click Finish to close the Add Standard TCP/IP Printer Port Wizard dialog box and click Close in the Printer Ports dialog box.**

9. Click **Configure Port** in the **Ports** tab of the **Properties** dialog box.



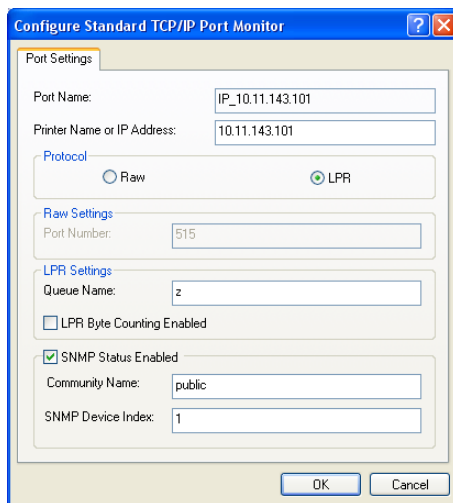
The **Configure Standard TCP/IP Port Monitor** dialog box appears.

10. If you have **LPD** printing enabled at the **EX7750 FACI**, select **LPR** for **Protocol** and **LPR Byte Counting Enabled** under **LPR Settings**.

**NOTE:** You can also proceed without selecting **LPR Byte Counting Enabled** under **LPR** settings.

11. If you have **Port 9100** printing enabled at the **EX7750 FACI**, select **Raw**.

The port number 9100 automatically appears under Raw Settings. This allows you to print to the printer connection that your administrator selected for Port 9100 printing in EX7750 Setup. You can also specify a port number as instructed in the next step.



**12. Enter the name of the print connection.**

For LPR, enter direct, print, or hold in the LPR Settings area.

Port 9100 is displayed in the Raw Settings area for direct, print, or hold queues.

**13. Click OK to close the Configure Standard TCP/IP Port Monitor dialog box.**

**14. Click Close to close the Ports tab.**

### Completing the Windows 2000/XP IPX (Novell) connection

Complete the setup for the IPX (Novell) connection as follows:

- Configure the Novell network and file server for handling EX7750 print jobs. The file server should be configured with a print server and print connection for the EX7750. For details, see your NetWare documentation.
- Prepare the EX7750 for IPX printing.
- Set up the IPX connection on the computer.

NetWare protocols (NWLink IPX/SPX Compatible Transport) and NetWare client services should already be installed on the Windows 2000/XP computer.

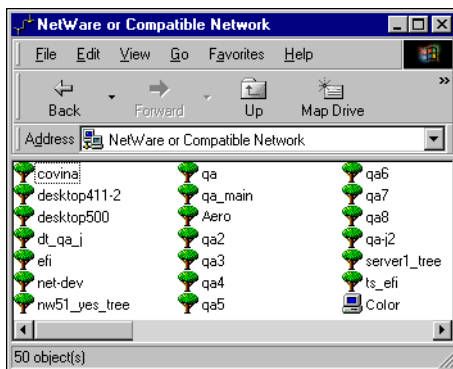
---

### TO SET UP IPX (NOVELL) PRINTING FOR WINDOWS 2000/XP

**NOTE:** The following procedures use Windows 2000 illustrations.

1. **On Windows 2000, double-click My Network Places.**  
**On Windows XP, click My Network Places.**
2. **Double-click NetWare or Compatible Network.**

A list of NetWare servers appears.



3. Double-click the NetWare Tree or File Server on which the network administrator defined a print connection for the EX7750.

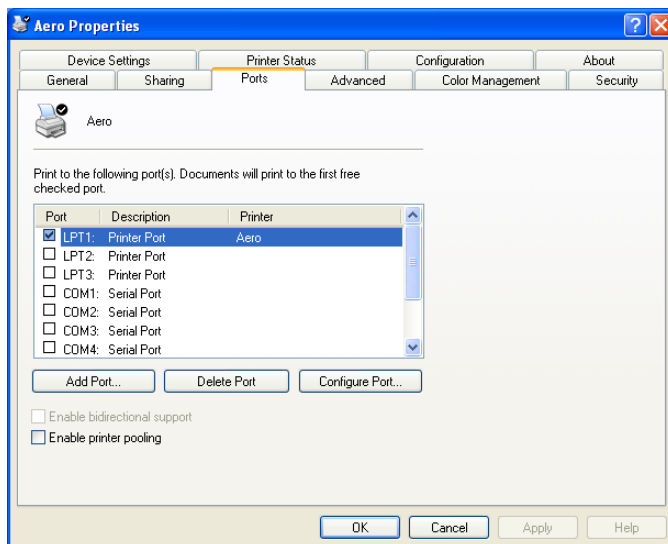
You may have to log in to the file server to see the print connections.

4. Double-click the print connection defined for the EX7750.
5. If the NetWare server does not have a suitable driver for the EX7750, you may be asked if you want to set up the printer on your computer. Click Yes.
6. Click OK to install the EX7750 PostScript printer driver.
7. Follow steps 6-10 of the procedure [“Installing the PostScript or PCL printer driver for Windows 2000/XP”](#) on page 1-2.

When installation is complete, a new printer window appears, with the name of the print queue on the NetWare server.

8. Choose Properties from the File menu and click the Ports tab.

Verify that the connection to the NetWare queue is listed and selected as a port for the EX7750.



9. Click the **General** tab and click **Print Test Page**.
10. In the **printer Job Notes** field, type user and job identification information and click **OK**.

The Test Page remains listed in the queue window until it is printed.

The EX7750 polls the NetWare server for print jobs in the print connection defined for the EX7750. When you print, your PostScript files are spooled to that connection and transmitted over the queue “port” to the EX7750.

### Setting up SMB printing on Windows 2000/XP

SMB printing (also known as Windows printing) allows you to install the printer driver and associated files, and print from your computer to a particular print connection (Hold, Print, or Direct) on the EX7750. These instructions assume you have installed the TCP/IP protocol and Client for Microsoft Networks.

Each connection (Hold, Print, or Direct) requires a new printer driver and printer description file. To set up printing to a second or third print connection, repeat the procedure, “[Setting up SMB printing on Windows 2000/XP](#)”. If you install more than one printer, give each a descriptive name during printer driver installation, such as Aero-Print or Aero-Hold, so you can easily identify printers.

---

#### BEFORE YOU BEGIN

- To check the setting for **Enable SMB Print Services**, print a **Configuration** page.  
**NOTE:** The default setting for **Enable SMB Print Services** on the EX7750 is **Yes**.
- To change the setting, right-click the **FieryBar** on the **FACI** and choose **Setup Fiery** to configure the EX7750. Then select **Network Setup > Services > Windows Print Sharing (SMB) > Enable SMB Print Services**.
- At the **Control Panel**, configure the EX7750 for SMB printing in **Run Setup > Network Setup > Service Setup > Windows Setup**.

SMB printing is referred to as Windows Printing in Setup, on the Control Panel Map, and on the Configuration page. For more information, see the [Configuration Guide](#).

---

**TO SET UP SMB PRINTING ON WINDOWS 2000/XP**

1. **Open My Network Places.**
2. **Browse for the printer you want to print to.**

The printer name you are browsing for is the name entered in Network Setup > Service Setup > Windows Setup > Server Name. For this information, see the Configuration page.

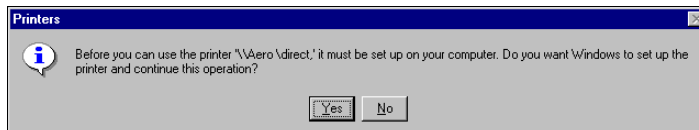
The amount of network traffic determines the amount of time required for the Browse function.

**NOTE:** You can also locate the printer using the Search feature on your Windows computer. Right-click My Network Places and click Search for Computers. Type the name of the printer and click Search Now.

If you are not able to locate your EX7750, contact your network administrator.

3. **Double-click the name of the EX7750 to display enabled print connections.**
4. **Double-click the name of the connection you want to print to.**

The Printers dialog box appears, asking whether you want to set up the printer.



5. **Select Yes to complete the installation for the selected connection.**

Windows 2000/XP downloads the printer driver and printer description files from the EX7750 to your computer and installation is complete.

For more information, see [“Installing the PostScript or PCL printer driver for Windows 2000/XP”](#) on page 1-2.



### Setting up IPP printing with Windows 2000/XP

With Internet Printing Protocol (IPP), print jobs are sent to the EX7750 over the Internet.

IPP printing is supported directly for Windows 2000/XP computers.

**NOTE:** The IPP setup procedures are performed after installing the appropriate printer drivers (see “[Installing the PostScript or PCL printer driver for Windows 2000/XP](#)” on page 1-2).

---

#### BEFORE YOU BEGIN

1. Prepare the EX7750 for TCP/IP printing.
2. Prepare the EX7750 for IPP printing.  
For more information, see the *[Configuration Guide](#)*.
3. Specify the printing destination on your computer.

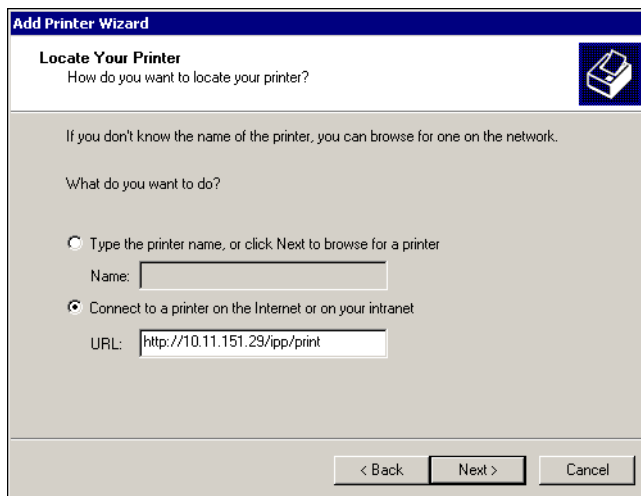
---

#### TO SET UP IPP PRINTING FOR WINDOWS 2000/XP

1. On Windows 2000, click Start, choose Settings, and then choose Printers.  
On Windows XP, click Start, choose Settings, and choose Printers and Faxes.
2. On Windows 2000, double-click the Add Printer icon and click Next.  
On Windows XP, click Add a printer under Printer Tasks.
3. Click Next in the Welcome window.
4. Select Network printer and click Next.

5. **Select “Connect to a printer on the Internet or on your intranet.” Type an IP address or computer name in the URL field.**

The URL for the printer is the IP address or DNS name followed by “ipp/print”. Insert slashes between the different elements.



6. **Click Next.**

The Connect to Printer dialog box appears.

7. **Click OK.**

The Add Printer Wizard dialog box appears.

8. **If you are installing the PostScript printer for Windows 2000/XP for the first time, follow the procedure described on [page 1-2](#).**

If you have already installed the printer driver on your computer, choose the appropriate names from the Manufacturers and Printers lists and click OK.

9. **Indicate whether you want to make the printer the default printer and click Next.**
10. **Click Finish.**

## Installing Fiery utilities

From the User Software CD, you can install the following Fiery utilities and user software:

- ColorWise Pro Tools
- Fiery Job Monitor
- Fiery Printer Delete Utility
- Fiery Mail Port
- Command WorkStation

Includes DocBuilder Pro. Adobe Acrobat and PitStop, a plug-in for Adobe Acrobat, are provided on the Fiery DocBuilder Pro kit CD.

- Fiery Downloader

**NOTE:** Do not attempt to install DocBuilder Pro from the User Software CD (by starting the setup.exe from the DocBuilder Pro folder); it is automatically installed when you install Command WorkStation. Installing DocBuilder Pro from the User Software CD can cause unpredictable results. In order to use DocBuilder Pro, you must install Acrobat and the Impose dongle.

**NOTE:** Job Monitor is automatically installed when you install the printer driver on your computer. To use Job Monitor, you first need to enable it in the printer driver.

The Fiery utilities must be separately installed on each user's computer. The installation of each utility is similar.

To use EX7750 software (Command WorkStation, and ColorWise Pro Tools) as well as WebTools on a Windows computer, you must install the Sun Java file, Java Runtime Environment (JRE), provided in the CommonUtl folder on the User Software CD. If the Sun Java file is not installed, you are prompted to install it before you proceed to EX7750 software. For more information about installing Java Runtime Environment (JRE), see “To install Sun Java on your computer” below. For more information about WebTools, see the *Job Management Guide* and the *Printing Guide*.

To install the software, you must have Service Pack 4 on a Windows 2000 computer, and Service Pack 1 installed on your Windows XP computer. If not, a warning message alerts you to install the Service Pack.

---

#### TO INSTALL SUN JAVA ON YOUR COMPUTER

1. When the dialog box prompting you to install Java Runtime Environment (JRE) appears, click OK to proceed with installation.
2. Click Yes in the License Agreement dialog box.
3. Select Typical for Setup Type and click Next.
4. When installation of Java Runtime Environment (JRE) files is complete, click Finish and follow the instructions for installing EX7750 software on [page 1-19](#).

After installation of the Sun Java files, a Java Web Start shortcut is created on your computer desktop. This is not intended for use with EX7750 software, so you may delete the shortcut if you wish.

---

#### TO INSTALL FIERY UTILITIES

1. Open the appropriate folder for the software you want to install.
2. Double-click the Setup.exe icon.
3. Follow the instructions in the Setup dialog boxes to complete installation.

---

#### BEFORE YOU BEGIN

- Print the Configuration page from the Control Panel and note the IP address of the EX7750.
- Print the Configuration page from the FACI and note the IP address of the EX7750.

## Adobe Acrobat

In Command WorkStation, the DocBuilder Pro feature works with Adobe Acrobat and the PitStop software plug-in for Acrobat. DocBuilder Pro is installed with Command WorkStation. To use Docbuilder Pro, you must install Acrobat and the PitStop plug-in, and Command WorkStation. Acrobat and PitStop are provided on the Fiery DocBuilder Pro kit.

**NOTE:** If Acrobat is installed after Command WorkStation, you may be required to restart Command WorkStation in order to use Impose.

**NOTE:** To use Impose, you must have the dedicated dongle installed to the parallel port on your computer. If the dongle is not installed, refer to the documentation packaged with the dongle.

For more information about Acrobat for Windows, see the Readme.pdf file on the DocBuilder Pro CD.

---

### TO INSTALL ADOBE ADOBE

1. Insert the DocBuilder Pro CD in the CD-ROM drive.
2. Open the Acrobat folder, and double-click AutoPlay.exe.
3. Follow the on-screen instructions.

All languages are installed.

## PitStop

PitStop is a plug-in for Acrobat for use with DocBuilder Pro. You must first install Acrobat as described in the previous section. PitStop software is included on the DocBuilder Pro CD.

---

### TO INSTALL PITSTOP

1. **On the DocBuilder Pro CD, double-click to open the PitStop folder.**

2. **Choose the setup icon for the language you want to install.**

English, French, German, and Spanish are the languages that are supplied and are indicated by a two-letter identifier. For example, in the file name, pp\_5.setup\_de.exe, “de” represents German. The identifiers for the other languages are: us (English), fr (French), and es (Spanish).

3. **Double click the PitStop setup icon you want.**

The Welcome to Enfocus PitStop Setup dialog box appears,

4. **Click Next and then click Yes to the license agreement.**

The Information dialog box appears.

**NOTE:** Make sure to complete the Enfocus Certified PDF Personal Information form. Otherwise, the form will appear every time you launch Acrobat.

5. **Click Next.**

The Choose Destination Location dialog box appears.

PitStop will automatically select the correct location for installation.

6. **Click Next.**

Setup is complete.

7. **Click Finish.**

For more information, see the PitStop documentation in Acrobat under Help > Plug-in Help\Enfocus PitStop Professional.

## Using Fiery utilities for the first time

Before you can use the newly installed software, you must configure the connection to the EX7750. Configuration of the Fiery utilities is similar.

Fiery Printer Delete Utility is installed and used locally, so connection to the EX7750 is not required before using the software.

---

### TO USE FIERY PRINTER DELETE UTILITY

1. Click **Start**, choose **Programs**, and then choose **Fiery**.
2. Click **FieryPrinterDeleteUtility**.

The Fiery Driver Uninstall Tool dialog box appears. If any EX7750 printer drivers are found on your computer, they are displayed.



3. To delete any of the displayed printers, select the printer name and click **Delete**.
4. Click **OK** to delete the selected printer driver.
5. Click **OK** to restart, or, to delete another printer driver, click **Cancel** to return to the Fiery Driver Uninstall Tool dialog box. Restart your computer when you finish deleting printer drivers.

## Configuring the connection for Fiery utilities

The first time you start one of the Fiery utilities, you must configure the connection to the EX7750. Similar configuration is used for all Fiery utilities, so any change in one configuration affects all the other connections. Configuration for most Fiery utilities is described in the following procedure.

For configuration of specific Fiery utilities, see the following:

- [“Configuring the connection for EFI Fiery Mail Port”](#) on page 1-27
- [“Configuring the connection for Command WorkStation”](#) on page 1-30

---

### BEFORE YOU BEGIN

- **Print the Configuration page from the EX7750 Control Panel and note the IP address of the EX7750.**
- **Print the Configuration page from the FACI and note the IP address of the EX7750.**

This page contains information you need when configuring the connection, such as the IP address. For TCP/IP installations, you can use the DNS name of the EX7750 instead of the IP address. Make sure the EX7750 is already registered in a Domain Name Server (DNS) on your network. For more information, see your Windows system documentation.



---

**TO CONFIGURE THE CONNECTION FOR FIERY UTILITIES**

1. **Start the utility for which you want to configure a connection.**
2. **If the No Fiery Configured dialog box appears, click OK.**  
**If the Choose Printer Device dialog box appears, click Add.**
3. **Enter the appropriate information for the EX7750.**

**Nickname**—Enter a name for the EX7750. This name does not have to match the actual Server Name of the EX7750.

**NOTE:** The nickname cannot contain the following characters:  
[ ] \_ " ' <space> <tab>

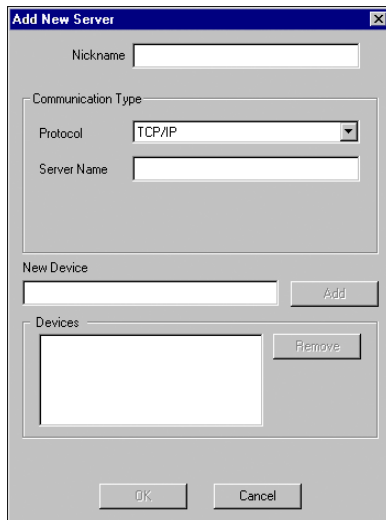
**Protocol**—Choose the type of network protocol you are using from the menu.

**NOTE:** Fiery utilities are not supported over IPX/SPX. Command WorkStation is supported on Windows computers over TCP/IP.

**Server Name**—Enter the IP address (or DNS name) of the EX7750.

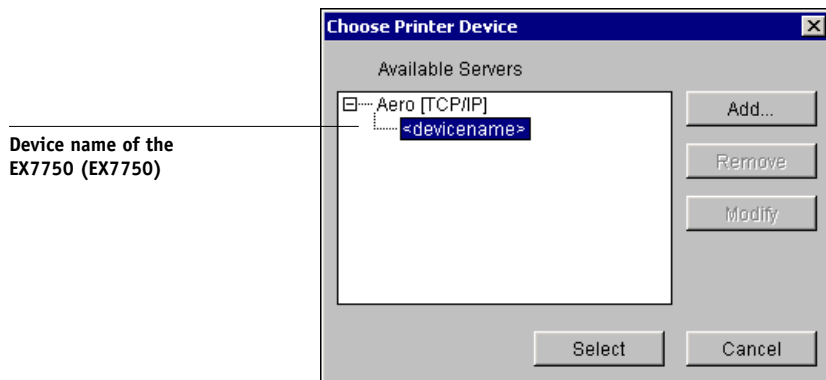
**New Device**—Enter the name of the device the EX7750 is connected to: EX7750.

**NOTE:** Type EX7750 exactly as shown because this term is case-sensitive.



4. When you have entered all the information, click Add.
5. With the device name (EX7750) selected in the Devices list, click OK.

The EX7750 appears in the list of Available Servers. The first line of the entry displays the nickname you gave the server, followed by the protocol you chose. The second line displays the device name.



6. With the device name selected in the list of Available Servers, click Select to begin using the utility.

## Modifying the configuration

Edit the configuration whenever there is any change to your EX7750 server or network, such as a server name or IP address. If you change EX7750 Setup information, do so before reconfiguring the connection.

---

### TO MODIFY THE CONFIGURATION

1. To edit information for a EX7750 in the list of available servers, select the EX7750 by its nickname and click **Modify**.
2. Make the necessary changes in the **Modify Server Settings** dialog box and click **OK**.
3. To add a new EX7750 to the list of available servers, click **Add**. Configure the **Add New Server** dialog box as outlined in steps 3 through 5 in the previous procedure.
4. To remove an EX7750, select the EX7750 by its nickname and click **Remove**.

**NOTE:** The nickname cannot be modified.

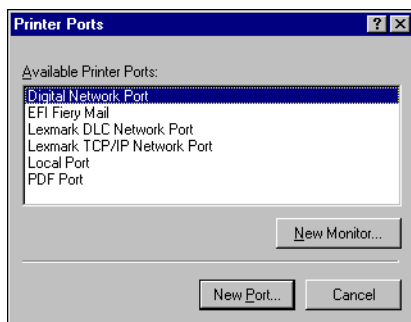
## Configuring the connection for EFI Fiery Mail Port

The E-Mail Service provides a method to print and control the EX7750 remotely. Jobs are sent to the EX7750 in the form of e-mail attachments. You can set up e-mail printing on Windows computers by adding the Fiery Mail Port software as a printer port.

To set up the EX7750 for e-mail printing, see the *Configuration Guide*. After Setup has been performed, install the software from the User Software CD onto your Windows computer, and then add a port.

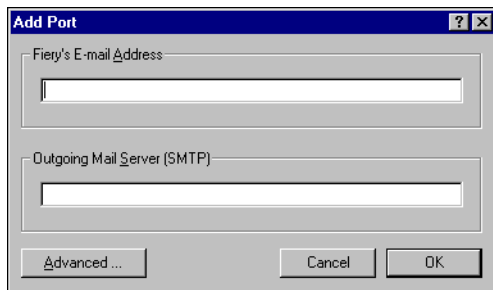
5. On Windows 2000, click **Start**, choose **Settings**, and then choose **Printers**.  
On Windows XP, click **Start** and choose **Printers and Faxes**.
6. In the window displaying a list of ports, click **Add Port**.

The Printer Ports dialog box appears, with the Fiery Mail port listed as one of the available ports.



**7. Select Fiery Mail and click New Port.**

The Add Port dialog box appears.



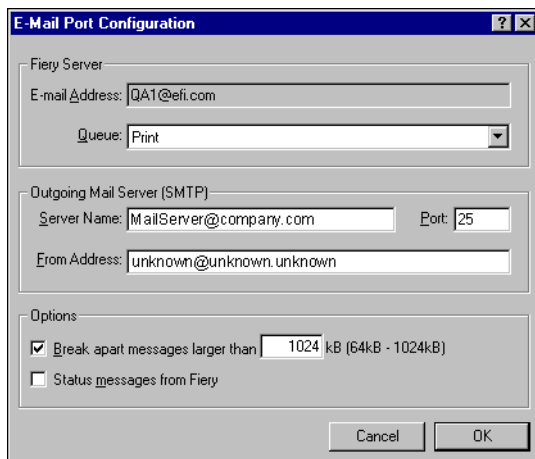
**8. Enter the basic information required to set up the e-mail port.**

**Fiery's E-mail Address**—Enter the e-mail address of the EX7750.

**Outgoing Mail Server**—Enter the name or IP address of the SMTP server for the port monitor to use.

**9. Click Advanced.**

The E-Mail Port Configuration dialog box appears.

The image shows a Windows-style dialog box titled "E-Mail Port Configuration". It has a blue title bar with a question mark icon and a close button. The dialog is divided into three sections. The first section, "Fiery Server", contains an "E-mail Address" field with the text "QA1@efi.com" and a "Queue" dropdown menu set to "Print". The second section, "Outgoing Mail Server (SMTP)", contains a "Server Name" field with "MailServer@company.com", a "Port" field with "25", and a "From Address" field with "unknown@unknown.unknown". The third section, "Options", contains two checkboxes: "Break apart messages larger than" (checked) and "Status messages from Fiery" (unchecked). The "Break apart" checkbox has a text box next to it showing "1024" and the unit "kB (64kB - 1024kB)". At the bottom right are "Cancel" and "OK" buttons.

**10. Enter the following information.**

For Fiery Server:

**E-mail Address**—The e-mail address of the EX7750.

**Queue**—The print connection on the EX7750 that you want.

For Outgoing Mail Server (SMTP):

**Server Name**—The SMTP server to use.

**From Address**—The “from” address to insert in the e-mail.

For Options:

**Break apart messages larger than**—The maximum size of a single e-mail message is displayed. If a job exceeds this size, it is split into multiple messages, each not exceeding this size, and is sent to the EX7750. The EX7750 then automatically combines all split messages into the original single print job for printing.

**Status messages from Fiery**—When enabled, the Status option requests the EX7750 to send status reports of the job printed to the print queue via e-mail.

**11. Click OK.**

The Add Printer Wizard dialog box appears.

**12. Click Next and follow the instructions for installing the printer driver for your Windows computer.**

## Configuring the connection for Command WorkStation

The first time you start Command WorkStation, you are prompted to configure the connection to the EX7750.

---

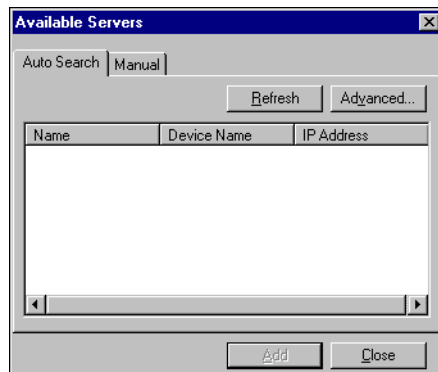
### TO CONFIGURE THE CONNECTION FOR COMMAND WORKSTATION

1. **Print a Configuration page.**

The information on this page helps you locate the EX7750, if it is not on the same local subnet as your computer.

2. **Start Command WorkStation.**

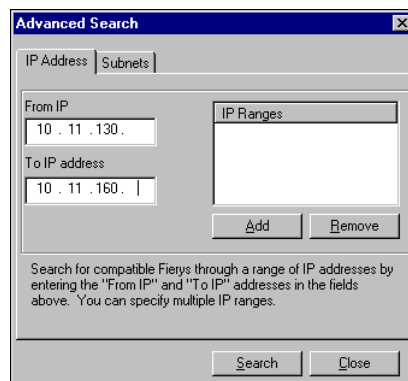
The Available Servers dialog box appears. All servers found in the local subnet are displayed.



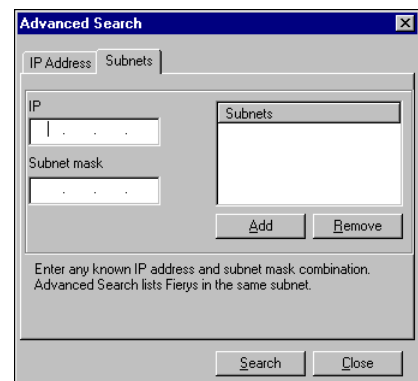
3. If no EX7750 servers were found, click the Manual tab to search by DNS name or IP address. Click Add to add the server to the Available Servers list.



The 'Available Servers' dialog box has a title bar with a close button. It contains two tabs: 'Auto Search' and 'Manual'. The 'Manual' tab is selected. Under the 'New Server' section, there are two radio buttons: 'Server DNS Name:' and 'Server IP address:'. The 'Server IP address:' option is selected. Below these is a note: 'Note: The Fiery DNS Name or IP address must be entered exactly as it is configured, or this utility will not be able to find it on the network.' At the bottom are 'Add' and 'Close' buttons.



The 'Advanced Search' dialog box has a title bar with a close button. It contains two tabs: 'IP Address' and 'Subnets'. The 'IP Address' tab is selected. It has fields for 'From IP' (containing '10 . 11 . 130 .') and 'To IP address' (containing '10 . 11 . 160 .'). There is an 'IP Ranges' list box. Below these are 'Add' and 'Remove' buttons. At the bottom are 'Search' and 'Close' buttons. A note at the bottom reads: 'Search for compatible Fierys through a range of IP addresses by entering the "From IP" and "To IP" addresses in the fields above. You can specify multiple IP ranges.'



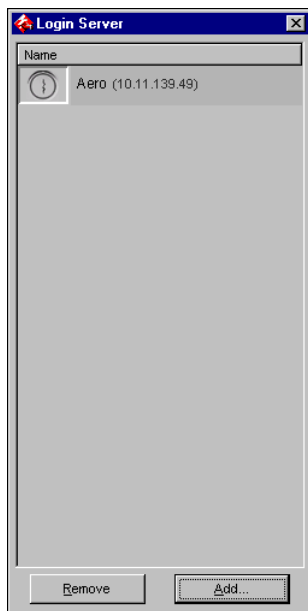
The 'Advanced Search' dialog box has a title bar with a close button. It contains two tabs: 'IP Address' and 'Subnets'. The 'Subnets' tab is selected. It has fields for 'IP' (containing '1 . . .') and 'Subnet mask' (containing '. . .'). There is a 'Subnets' list box. Below these are 'Add' and 'Remove' buttons. At the bottom are 'Search' and 'Close' buttons. A note at the bottom reads: 'Enter any known IP address and subnet mask combination. Advanced Search lists Fierys in the same subnet.'

4. Click Search.

All available servers appear in the Available Servers list.

5. Select the EX7750 server you want to use and click Add.

The selected EX7750 appears in the Login Server dialog box.



6. Click the server name.

The Login dialog box appears.





7. **Select Administrator, Operator, or Guest and click Log In.  
Enter the password when prompted.**

Your computer is connected to the EX7750.

### **Modifying the configuration**

Edit the configuration whenever there is any change to your EX7750 server or network, such as a server name or IP address. If you change EX7750 Setup information, do so before reconfiguring the connection.

---

#### **TO MODIFY THE CONFIGURATION**

1. **Start Command WorkStation.**  
The Login Server window appears.
2. **Select the EX7750 server for which you want to modify the configuration, and click Remove.**
3. **To add the modified EX7750 server, follows steps 3 through 5 of the previous procedure.**

To modify the connection to the EX7750, you must remove the server from the Login Server list and follow the procedure for configuring the connection.

## Installing color files from the User Software CD

You can copy additional color files from the User Software CD to your computer. Many of the files are PostScript files that you can download and print using Fiery Downloader.

ICC folder      ICC monitor settings file and a device profile specially designed for use with the EX7750 and the printer. For instructions on installing, see [“Installing the ICC profiles on a Windows computer”](#) on page 1-35.

Windows  
Color Files  
folder      Cmyk.ps, an 11-page, letter-size PostScript file to use for reference when defining CMYK colors in applications.

Pantone.ps, a 19-page, letter-size PostScript file that indicates the closest equivalent of PANTONE coated colors that the EX7750 and your printer model can produce. The method used to print the Pantone.ps file differs depending on the Spot Color Matching setting. For more information, see the [Printing Guide](#) and the [Color Guide](#).

Rgb\_01.doc, a file you can print from Microsoft Word 97 or later to view available RGB colors.

Rgb\_02.ppt, a file you can print from PowerPoint 6.0 or later to view available RGB colors.

Calibrat folder  
(inside the  
Windows  
Color Files  
folder)      Four PostScript files of color patches for obtaining measurements: Custom21.ps, Custom34.ps, Stand21.ps, and Stand34.ps. The numbers in the file names refer to the number of patches on the page. The Custom files allow you to download measurement patches that incorporate the current calibration set of the printer. The Standard files allow you to download standard measurement patches that bypass the current calibration set of the printer. For information about using these files, see the [Color Guide](#).

**NOTE:** These files are provided for expert users and should not be used for day-to-day calibration.

## Installing the ICC profiles on a Windows computer

The ICC profiles included in the Icc folder on the User Software CD are for use with ColorWise Pro Tools. You can also use the ICC profiles with applications that support ICC standards, such as Photoshop. For most ICC-aware applications, the files must be installed in a folder named Color in the System Folder. For use with ColorWise Pro Tools, you can copy the files to a folder of your choice.

You can upload additional ICC profiles with the Profile Manager in ColorWise Pro Tools. For more information about uploading and using ICC profiles with ColorWise Pro Tools, see the [Color Guide](#).

---

### TO INSTALL THE ICC PROFILES ON A WINDOWS COMPUTER

1. On the User Software CD, open the Icc folder.
2. If you are using Windows 2000, copy the profiles to the Winnt\System32\Color folder on your computer.

**NOTE:** If a folder named “Color” does not exist in the System32 folder, create one and install the profiles into it.

**If you are using Windows XP, right-click the profile you want and click Install Profile.**

**NOTE:** The profiles are installed automatically to the Windows\System32\spool\drivers\color folder on your computer.

## Loading the monitor settings file

The Efirgb.icc monitor settings file can be used in Adobe Photoshop, or other applications that support ICC profiles, to define a source color space for printing to the EX7750.

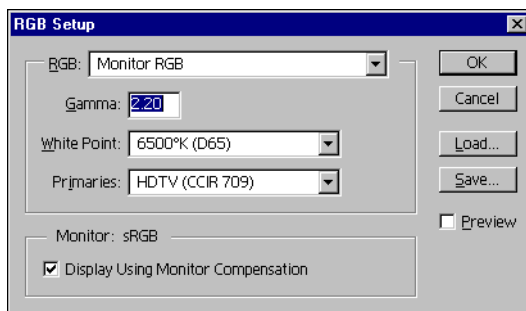
These instructions assume you have installed the ICC profiles included on the User Software CD. For more information, see the preceding section.

**NOTE:** The internal name of an ICC profile may vary slightly from its file name.

---

### TO LOAD THE RGB WORKING SPACE PROFILE FOR PHOTOSHOP 5.X

1. Start Photoshop.
2. Choose Color Settings from the File menu and choose RGB Setup from the Color Settings submenu.
3. In the RGB Setup dialog box, click Load.



4. For Windows Windows 2000, browse to the Winnt\System32\Color folder, select Efirgb.icc, and then click Load.

For Windows XP, browse to the Windows\System32\spool\driver\color folder, select Efirgb.icc, and then click Load.

The Efirgb v1f file is displayed in the RGB menu of the RGB Setup dialog box.

5. Click OK.

For more information about ICC profiles, see your Photoshop documentation.

## Loading the ICC printer device profile

This ICC profile defines the target color space for printing to the printer.

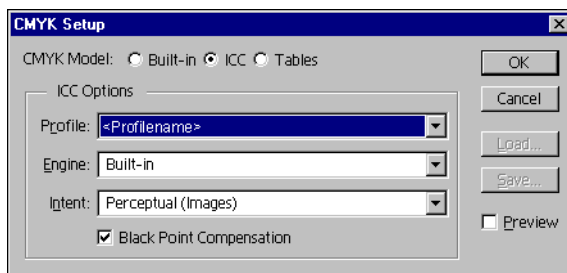
These instructions assume you have installed the ICC profiles included on the User Software CD. For more information, see [“Installing the ICC profiles on a Windows computer”](#) on page 1-35.

**NOTE:** The internal name of an ICC profile may vary slightly from its file name.

---

### TO LOAD THE ICC PRINTER DEVICE PROFILE IN PHOTOSHOP 5.X

1. Start Photoshop.
2. Choose Color Settings from the File menu and choose CMYK Setup from the Color Settings submenu.
3. In the CMYK Setup dialog box, choose ICC as the CMYK color model.
4. Select the profile that corresponds to the EX7750 from the Profile menu.



5. Click OK.

For more information about ICC profiles, see your Photoshop documentation.

### **Loading monitor settings files and ICC printer device profiles in Photoshop 6.x/7.x**

After you have installed the Efirgb.icc monitor settings file and the ICC profile for the EX7750, follow the procedure below to load them in Photoshop 6.x/7.x.

---

#### **TO LOAD THE MONITOR SETTINGS FILE AND ICC PRINTER DEVICE PROFILE IN PHOTOSHOP 6.x/7.x**

- 1. Start Photoshop.**
- 2. Choose Color Settings from the Edit menu and select Advanced Mode in the Color Settings dialog box.**
- 3. Choose EFI RGB from the RGB menu.**
- 4. Choose the profile that corresponds to the EX7750 from the CMYK menu.**
- 5. Click OK.**

For more information, see your application's documentation.

## Installing the printer description files for Windows

The User Software CD contains printer description files for popular Windows applications. Adobe Pagemaker 6.x and 7.x do not support automatic installation of printer description files from the Printers or Printers and Faxes Control Panel. To make the EX7750 available in the Print and Page Setup dialog boxes of this application, copy printer description files to the appropriate location.

---

### TO COPY THE PRINTER DESCRIPTION FILES

1. On the User Software CD, open the English\Prntdrv\Ps\_drvr folder. Select the folder that corresponds to the language system you are using.

For Windows 2000/XP, select \Prntdrv\Ps\_drvr\Win\_2K\_XP.

2. Copy the printer description file for your EX7750 to the appropriate location.

If you use	Copy this file	To this location
PageMaker 6.5/7.0	EF6X6626.PPD	For PageMaker 6.5, \PM65\RSRC\USENGLSH\PPD4 For PageMaker 7.0, \PM7\RSRC\USENGLSH\PPD4

This page is intentionally blank.



## Chapter 2: Installing User Software on a Mac OS Computer

The general steps for installing the EX7750 user software and setting up printing on a Mac OS computer are as follows:

- Install the PostScript printer driver and printer description file.
- Set up the EX7750 in the Chooser (Mac OS 9 or Mac OS X Classic mode) or in the Print Center (Mac OS X Native mode).
- Install the Fiery utilities.

**NOTE:** Command WorkStation LE is only available for Mac OS X Native. All other utilities are available for Mac OS 9 and Mac OS X Classic.

- Configure the connection for Fiery utilities.
- Install the printer and screen fonts.
- Install the ColorSync profiles.
- Install additional color reference and application-specific files.

In addition to using the User Software CD, you can download printer drivers from the EX7750 with the Installer WebTool (if the site administrator has enabled Internet access to the EX7750). For instructions, see [“Using the WebTools Installer”](#) on page 3-2.

Once you download the printer files, the installation process is identical to installing from the User Software CD.

## Setting up the EX7750 as a PostScript printer

To set up the EX7750 as a PostScript printer, you must install the PostScript printer driver and the printer description file that corresponds to your Phaser 7750. The PostScript printer driver and printer description files are provided on the User Software CD. Printer drivers provide a way to communicate information on print jobs between your applications, the EX7750, and any other PostScript printer connected to your computer.

When you install printer files from the User Software CD or printer files downloaded using the Installer WebTool, use the following procedures.

## Setting up Mac OS 9 printer drivers and printer description files

The following instructions describe how to set up printer drivers and printer description files.

---

### TO INSTALL THE ADOBEPS PRINTER DRIVER AND PRINTER DESCRIPTION FILE FOR MAC OS 9

- 1. Quit all open applications.**

After you have completed installation, restart your computer.

- 2. On the User Software CD, open the OS9 folder and then the English: Printer Driver folder.**

**If you are installing from files you downloaded using the Installer WebTool, open the Printer Driver folder on your hard disk.**

- 3. Double-click the AdobePS Installer icon.**

- 4. Follow the on-screen instructions.**

The AdobePS Installer installs the Adobe PostScript printer driver, and the printer description file that corresponds to the EX7750.

**NOTE:** If you operate the EX7750 in a copy shop, quick print shop, or service bureau, provide your customers with copies of the printer driver, printer description file, or ICC profiles you use for printing images, as well as any relevant documentation. This ensures that jobs they create and print to files are properly formatted for printing to the EX7750.

### Setting up the EX7750 in the Chooser

After you install the Adobe PostScript printer driver and printer description file (see “Setting up the EX7750 as a PostScript printer” on page 2-2), you must set up the EX7750 in the Chooser in order to take full advantage of its features. This section describes how to set up the EX7750 with the AdobePS printer driver.

**NOTE:** We recommend that you set the Multiple Users function to Off.

---

#### TO SET UP THE EX7750 IN THE CHOOSER

1. **Select Chooser from the Apple menu.**

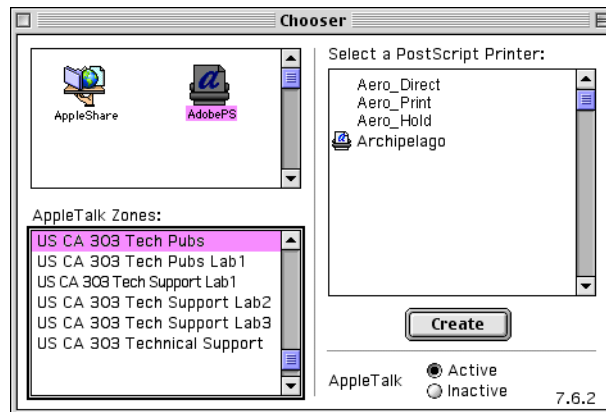
Make sure AppleTalk is set to Active.

2. **Select the correct AppleTalk Zone, if necessary.**

3. **Click the AdobePS icon.**

The EX7750 appears in the Select a PostScript Printer list in the form of <server name>\_<print connection>.

**NOTE:** Only the print connections (Direct, Hold, and Print) that have been enabled in Setup appear in the Chooser.

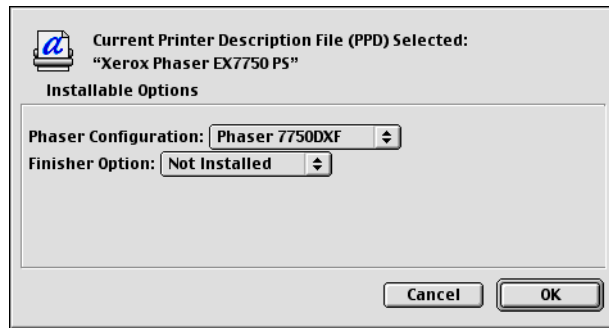


4. Select a EX7750 connection from the “Select a PostScript Printer” list and click Create.

Select the correct printer description file for your printer.

**NOTE:** You must set up each print connection separately. Repeat this step for all enabled connections.

5. With the same printer selected, click Setup, and then click Configure.
6. In the Installable Options dialog box, select the appropriate settings from the menus and click OK.



7. Click OK to close options for the printer.
8. Close the Chooser.

## Setting up Mac OS X v10.2 printer drivers and printer description files

The following instructions are for Mac OS X v10.2 and v10.3 Native mode. The term “Mac OS X” is used in this chapter to refer to Mac OS X v. 10.2.5 through 10.3.1.

The User Software CD contains the following software for Mac OS X inside the OSX folder:

- **OSX Installer**—this application installs the printer driver files (PPDs) necessary to print from Mac OS X.

**NOTE:** Fiery utilities as well as WebTools are not supported on Mac OS X.

- **Language folders**—these folders contain copies of the printer description files that will be installed by the PPD Installer. You do not need to open these folders or install them manually on your computer; the appropriate files will be installed by the PPD Installer.

---

### TO INSTALL THE PRINTER DESCRIPTION FILES FOR MAC OS X v10.2

**NOTE:** Fiery utilities as well as WebTools are not supported on Mac OS X v10.2.

1. **Quit all open applications.**
2. **Make sure that Print Center is not running on your computer.**

Print Center updates the list of available printers when it restarts; if a printer description file is added while Print Center is running, you cannot select the associated printer model until you restart Print Center.

**NOTE:** For Mac OS X 10.3, choose Printer Setup Utility.

3. **Insert the User Software CD into the CD-ROM drive.**
4. **Open the Printer Driver folder inside the OSX folder on the User Software CD.**
5. **Click the OSX Installer icon to start installing printer description files.**
6. **Follow the on-screen instructions.**

The PPD Installer installs the printer description files that correspond to the EX7750.

After you have completed installation, restart your computer.

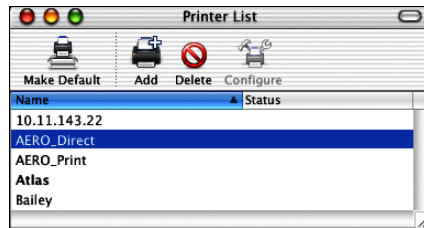
## Setting up the EX7750 in the Print Center

**NOTE:** Mac OS X 10.2 screens are shown. Differences are noted wherever necessary.

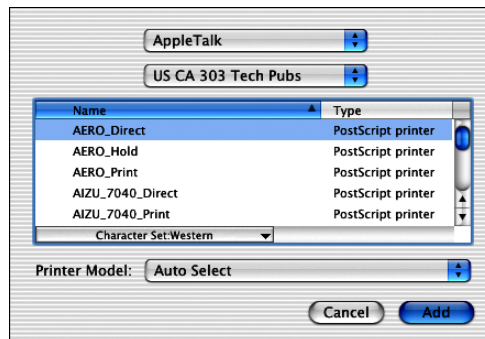
### TO SET UP THE EX7750 IN THE PRINT CENTER ON AN ENGLISH SYSTEM

1. Click **Application** in the **Go** menu, choose **Utilities**, and then choose **Print Center**.

**NOTE:** For Mac OS X 10.3, choose **Printer Setup Utility**.

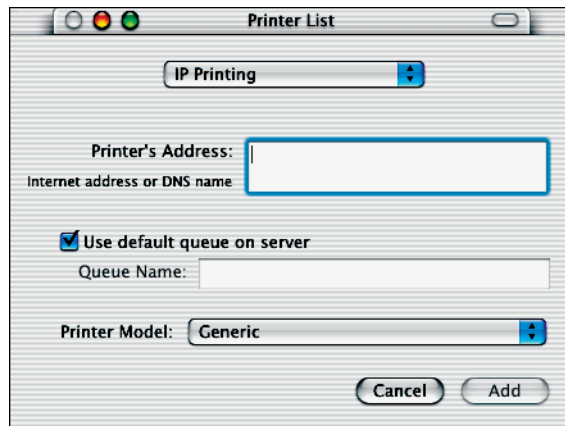


2. Click **Add** in the **Printer List** dialog box.
3. Choose **AppleTalk** or **IP** printing in the menu that appears.
4. For **AppleTalk**, choose the **AppleTalk Zone**, and then choose the name of the EX7750. If the zone is not listed as the **Default Zone**, or one of the **Recent Zones**, select **AppleTalk Network**, select the zone, and click **Choose**. Proceed to step 6.



For IP Printing, enter the IP address or DNS name of the printer for **Printer's Address**, clear **Use default queue on server**, and then enter the print connection for **Queue Name**.

**NOTE:** Enter the printer Queue Name for the print connection. You cannot use the same Queue Name for more than one printer.



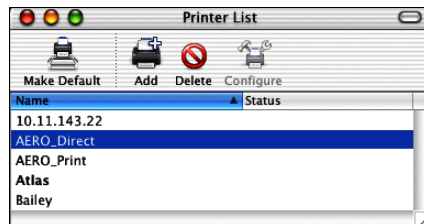
For **Printer Model**, select the appropriate manufacturer name, and then select the file for the EX7750 PPD.

5. Click **Add**.
6. Proceed to [“To configure installable options”](#) on page 2-10.

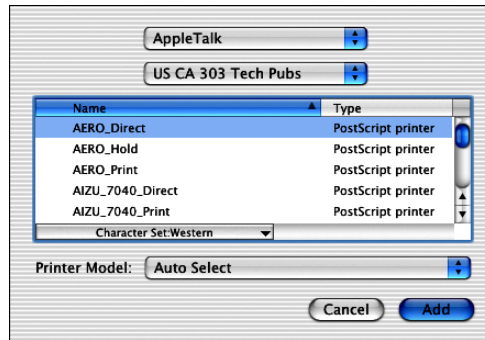
---

#### TO SET UP THE EX7750 IN THE PRINT CENTER ON A NON-ENGLISH SYSTEM

1. Double-click **Print Center** in 'Utilities' under **Startup disk/Application**.

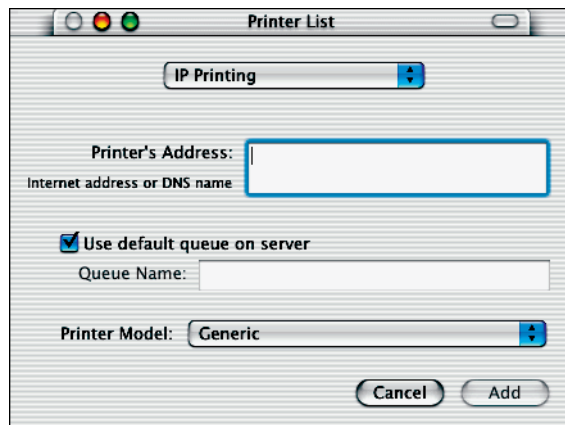


2. Click Add in the Printer List dialog box.
3. Choose AppleTalk or IP printing in the pop-up menu.
4. For AppleTalk, choose the AppleTalk Zone, and then choose the name of the EX7750. If the zone is not listed as the Default Zone, or one of the Recent Zones, select AppleTalk Network, select the zone, and click Choose.



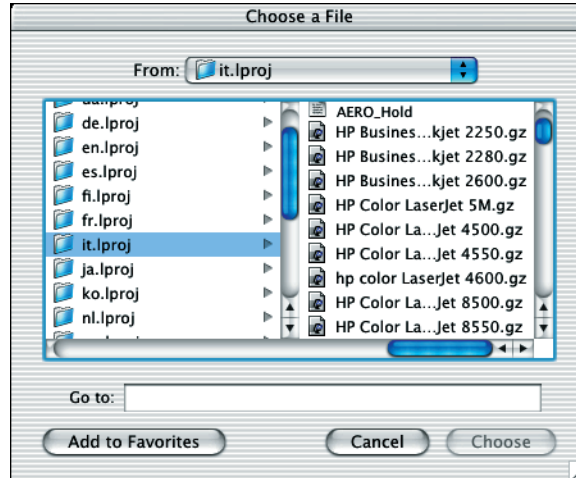
For IP Printing, enter the IP address or DNS name of the printer for **Printer's Address**, clear **Use default queue on server**, and then enter the print connection for **Queue Name**.

**NOTE:** Enter the printer Queue Name for the print connection. You cannot use the same Queue Name for more than one printer.





5. For Printer Model, select Other.



6. In the Choose a File dialog box, select the appropriate language file from the left column, and the EX7750 name from the right column.

The following table explains which file name corresponds to your language.

Language	File name
Dutch	nl.lpro
English	en.lproj
French	fr.lproj
German	de.lproj
Italian	it.lproj
Japanese	ja.lproj
Portuguese	pt.lproj
Spanish	es.lproj
Swedish	sv.lproj

**NOTE:** These files are located on your hard drive in System Folder:Library:Printers:PPDs:Contents:Resources.

7. Click Choose.
8. Click Add in the Printer List window.

For more information about adding printers, see your Mac OS X documentation.

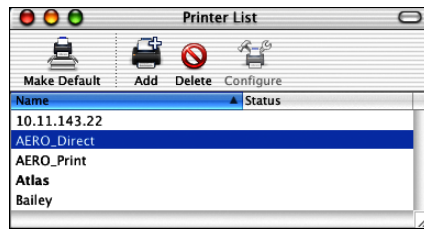
---

#### TO CONFIGURE INSTALLABLE OPTIONS

1. Double-click Print Center in Utilities under Startup disk/Application.

The Print Center launches.

**NOTE:** For Mac OS X 10.3, choose Printer Setup Utility. Select your printer in the Printer List.



2. Choose Show Info from the Printer menu.
3. Choose Installable Options in the menu that appears.
4. In the Printer Info dialog box, choose the appropriate settings.
5. Click Apply Changes and close the dialog box.

## Installing EX7750 software and fonts

The Mac OS installers function essentially the same for each type of software. Before you begin each installation, determine where you want to install each item on your hard disk drive. Otherwise, the software is placed by default as follows:

- ColorSync profiles—ColorSync Profiles folder

If you are using ColorSync 2.5, install the profiles into the ColorSync Profiles folder inside the System Folder. If you are using an earlier version of ColorSync, install the profiles into the ColorSync Profiles folder inside the System Folder: Preferences folder. The printer profile can be moved to a folder of your choice.

- Fiery Downloader, Fiery Spooler, ColorWise Profiler, and ColorWise Pro Tools—“Fiery” folder
- Fonts—System Folder:Fonts folder

For instructions on installing Fonts, see “[Fonts](#)” on page 2-22.

---

### TO INSTALL MAC OS SOFTWARE

1. **Insert the User Software CD into the CD-ROM drive and double-click the Installer icon of the item you want to install, then follow the instructions in the installer dialog boxes.**
2. **If prompted, click Quit to close the software installer.**

## Installing MRJ on your computer

In order to use ColorWise Pro Tools, Fiery Downloader, or Fiery Remote Scan, you must have Mac OS Runtime for Java (MRJ) installed on your computer.

If you do not have MRJ installed, the ColorWise Pro Tools, or Fiery Downloader installer automatically initiates the MRJ installation process.

**NOTE:** The respective installer prompts the MRJ installation from the User Software CD. MRJ 2.2.5 is provided on the User Software CD.

---

### TO INSTALL MAC OS RUNTIME FOR JAVA

1. **Open the MRJ folder on the User Software CD and double-click Installer.**
2. **Read the Apple Computer Inc. License Agreement and click Agree to install the software.**
3. **Click Install.**

Some files are installed.

4. **Click Quit.**

You are now ready to configure the ColorWise Pro Tools and Fiery Spooler connections to the EX7750.

We recommend that you use the version of MRJ provided on the User Software CD with the EX7750 software.

If you have a newer version of MRJ (such as 2.2.5) already installed on your computer and experience some difficulty using the EX7750 software, either remove or relocate the MRJ files currently installed (using the following procedure) and reinstall the version of MRJ provided on the User Software CD.

---

**TO UNINSTALL MAC OS RUNTIME FOR JAVA**

1. **Locate the System Folder on your hard disk.**
2. **Inside the Extensions folder, locate MRJ Libraries and remove it or move it to another folder.**

**NOTE:** If you find the “MRJ Enabler” file under Extensions, remove it or move it to another folder.
3. **Locate the Apple Extras folder inside the Applications folder on your hard disk.**
4. **Inside the Apple Extras folder, locate Mac OS Runtime Java, and remove it or move it to another folder.**
5. **Restart your computer.**

## Configuring a connection for ColorWise Pro Tools

The first time you use ColorWise Pro Tools, you are prompted to configure a connection to the EX7750.

---

### BEFORE YOU BEGIN

- Print the Configuration page from the Control Panel and note the IP address of the EX7750.
- Print the Configuration page from the FACI and note the IP address of the EX7750.

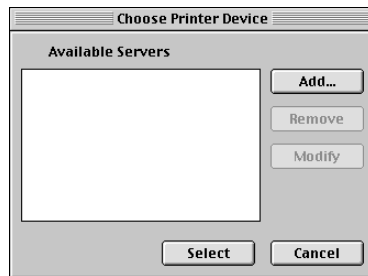
---

### TO CONFIGURE A CONNECTION FOR COLORWISE PRO TOOLS

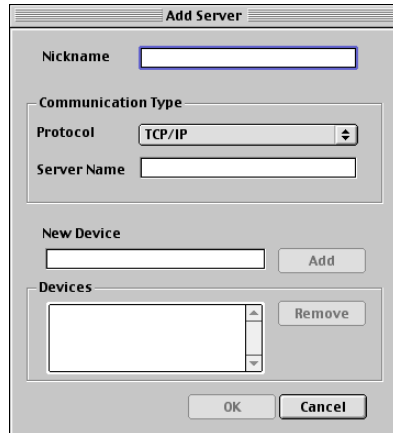
1. Start the utility by double-clicking its icon.

For Fiery Remote Scan, start the supported TWAIN-compliant software. For details, see the [Printing Guide](#).

The Choose Printer Device dialog box appears.



2. If you have previously configured a connection to the EX7750, you are ready to use ColorWise Pro Tools. If you have not configured a connection, click Add.

The image shows a dialog box titled "Add Server". It contains several input fields and buttons. At the top is a "Nickname" text box. Below it is a "Communication Type" section containing a "Protocol" dropdown menu (set to "TCP/IP") and a "Server Name" text box. Further down is a "New Device" section with a text box and an "Add" button. Below that is a "Devices" section with a list box and a "Remove" button. At the bottom are "OK" and "Cancel" buttons.

3. Enter the appropriate information for the EX7750.

**Nickname**—Enter a name for the EX7750. It does not have to match the actual server name of the EX7750.

**NOTE:** The nickname cannot contain the following characters:

[ ] \_ " ' <space> <tab>

**Protocol**—TCP/IP is the only supported network protocol, so no selection is necessary.

**Server Name**—Enter the IP address (or DNS or hosts name) of the EX7750.

**New Device**—Enter the name of the device the EX7750 is connected to: EX7750. This device name appears in the Printer Setup section of the Configuration page.

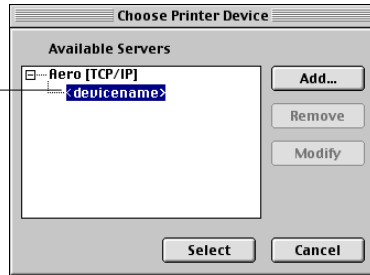
**NOTE:** Type EX7750 exactly as shown; this term is case-sensitive.

4. When you have added all the information, click Add.
5. With the device name selected in the Devices list, click OK.

The EX7750 appears in the list of Available Servers. The first line of the entry displays the nickname you gave the server, followed by the protocol. The second line displays the device name.

6. With the device name selected in the list of Available Servers, click Select to begin using ColorWise Pro Tools.

Device name of the EX7750  
(EX7750)



### Modifying the configuration

Edit the configuration whenever there is any change to your EX7750 or network, such as an IP address or device change. Change the specific EX7750 Setup information before configuring the connection.

---

#### TO MODIFY THE CONFIGURATION

1. In the Chooser dialog box, click Option.
2. To edit information for a EX7750, select the EX7750 by its IP address or DNS name and click Modify. Edit information in the Settings dialog box as necessary, and click OK.
3. To add a new EX7750, click Add. Configure the Settings dialog box as outlined in steps 3 through 5 in the preceding procedure.
4. To remove a EX7750, select the EX7750 by its IP address or DNS name, and click Remove.

The list of Available Servers reflects the modifications you have made.



## Configuring a connection for Fiery Spooler

---

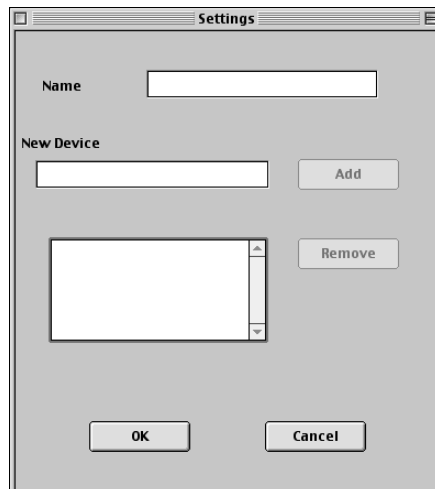
### BEFORE YOU BEGIN

- Print the Configuration page from the Control Panel and note the IP address of the EX7750.
- Print the Configuration page from the FACS and note the IP address of the EX7750.

---

### TO CONFIGURE THE CONNECTION FOR FIERY SPOOLER

1. Start the utility by double-clicking its icon.  
The Chooser dialog box appears.
2. Click Option.
3. Click Add.
4. Enter the appropriate information for the EX7750.



**Name**—Enter the IP address (or DNS name) of the EX7750.

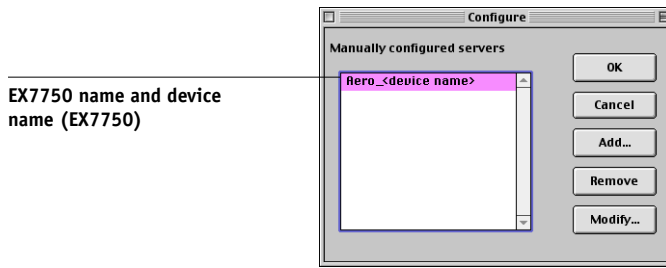
**New Device**—Enter the name of the device that the EX7750 is connected to: EX7750. This device name appears in the Printer Setup section of the Configuration page.

**NOTE:** Type EX7750 exactly as shown; this term is case-sensitive.

5. When you have entered all the information, click **Add**.

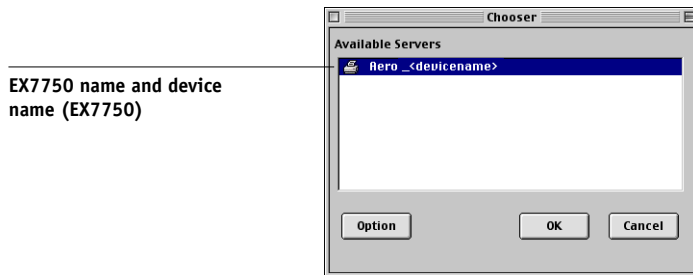
6. With the device name selected, click **OK**.

The EX7750 appears in a list of configured servers.



7. Click **OK** in the Configure dialog box.

The EX7750 appears in a list of Available Servers.



8. With the EX7750 selected in the list of Available Servers, click **OK** to begin using Fiery Spooler.

## Configuring the connection for Fiery Downloader and Command WorkStation LE for Mac OS X

The first time you start Fiery Downloader or Command WorkStation LE, you are prompted to configure the connection to the EX7750.

---

### BEFORE YOU BEGIN

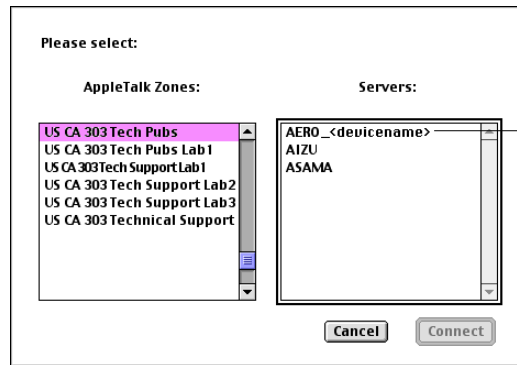
- Print the Configuration page from the Control Panel and note the IP address of the EX7750.
- Print the Configuration page from the FACI and note the IP address of the EX7750.

---

### TO SPECIFY A EX7750 CONNECTION FOR FIERY DOWNLOADER

1. Double-click the Fiery Downloader icon.
2. Select the AppleTalk zone in which the EX7750 is located from the AppleTalk Zones list.

The available servers appear in the Servers list.

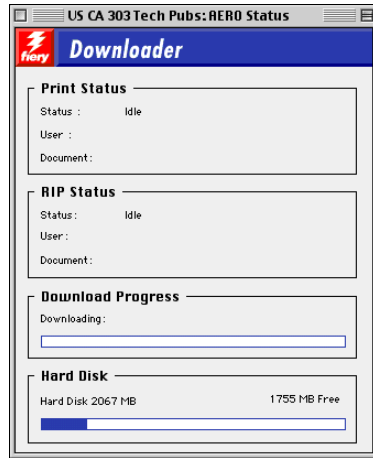


EX7750 name and device name  
(EX7750)

3. Select the EX7750 in the Servers list.

**4. Click Connect.**

The Fiery Downloader dialog box appears.



For information about using Fiery Downloader, see the *Printing Guide*.

---

**BEFORE YOU BEGIN**

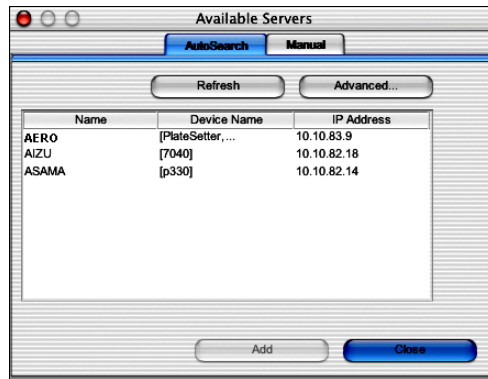
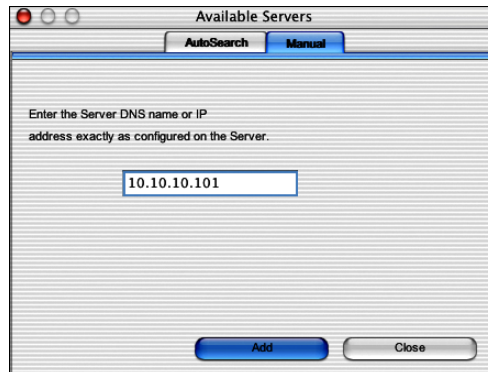
- **Print the Configuration page from the Control Panel and note the IP address of the EX7750.**
- **Print the Configuration page from the FACI and note the IP address of the EX7750.**

---

**TO CONFIGURE THE CONNECTION FOR COMMAND WORKSTATION LE****1. Start Command WorkStation LE.**

The Available Servers dialog box is displayed. All servers found in the local subnet are displayed.

**NOTE:** The device name for the EX7750 is EX7750.

**2. If no EX7750 servers were found, click the Manual tab to search by DNS name or IP address. Click Add to add the server to the Available Servers list.**

## Fonts

The Fonts installer on the User Software CD includes screen and printer fonts that correspond to the 136 built-in PostScript printer fonts on the EX7750. The Font installer copies both types of fonts to the System Folder:Fonts folder on your hard disk. To be available to applications, the screen fonts must remain in the System Folder:Fonts folder. You can copy the printer fonts to a folder of your choice.

**NOTE:** In the System Folder:Fonts folder, when displayed by Kind, screen fonts appear as type “Font Suitcase” and PostScript printer fonts appear as type “PostScript font.”

**NOTE:** To back up installed fonts, see the *Configuration Guide*.

---

### TO INSTALL SCREEN AND PRINTER FONTS

1. **On the User Software CD, double-click the Fonts icon to start the Fonts installer.**

**NOTE:** Access the Fonts icon from the OS 9 folder on the User Software CD.

2. **Click Install and restart your computer.**

By default, the fonts are installed to the System Folder:Fonts folder on your hard disk.

If you have any applications open, you must quit and restart them before the newly installed screen fonts are available.

## Installing color files from the User Software CD

You can copy additional color files from the User Software CD to your hard disk. Many of the files are PostScript files you can download and print using Fiery Downloader.

The User Software CD contains the following color files:

ICC profiles (inside the ColorSync folder)	Install the ICC profiles into the ColorSync Profiles folder inside the System Folder.
Mac Color Files folder	<p>CMYK Color Reference.ps, an 11-page, letter-size PostScript file to use for reference when defining CMYK colors in applications.</p> <p>PANTONE Book.ps, a 19-page, letter-size PostScript file that indicates the closest equivalent of PANTONE coated colors that the EX7750 and your particular printer model can produce. The method used to print the PANTONE Book.ps file differs depending on the Spot Color Matching setting. For more information, see the <i>Printing Guide</i> and the <i>Color Guide</i>.</p> <p>RGB page 01, a file you can print from Microsoft Word 97 or later to view available RGB colors.</p> <p>RGB page 02, a file you can print from PowerPoint 6.0 or later to view available RGB colors.</p>
Calibration folder (inside Mac Color Files folder\English folder)	These files are provided for expert users and should not be used for day-to-day calibration.

## Loading ICC printer profiles

The ICC profiles are used with ColorWise Pro Tools and applications that support ICC standards.

These instructions assume that you have already installed the ICC profiles included on the User Software CD inside the ColorSync folder. For more information, see [“Installing color files from the User Software CD”](#) on page 2-23.

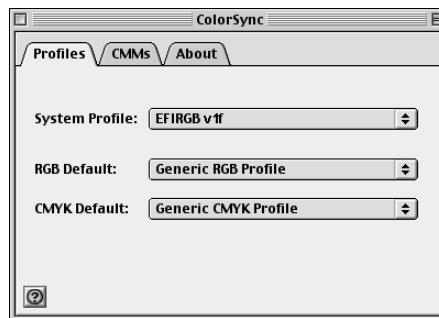
**NOTE:** The internal name of an ICC profile may vary slightly from its file name.

The following procedure describes installing the ICC profiles with ColorSync 4.0. For more information about ColorSync, see the documentation for your application.

---

### TO SET THE COLORSYNC SYSTEM PROFILE

1. **Choose Control Panels:ColorSync from the Apple Menu.**
2. **Select EFIRGB ICC v1f from the System Profile list.**



When selected as the ColorSync system profile, EFIRGB ICC v1f sets the optimal source color space for printing to the EX7750. The color space set by the EFIRGB ICC v1f profile is the same as that set by the EFIRGB setting of the RGB Source Profile print option.

**NOTE:** The RGB Source Profile print option setting overrides the ColorSync system profile setting.

3. **Close the ColorSync dialog box.**

For more information about ICC printer profiles, see your Photoshop documentation.



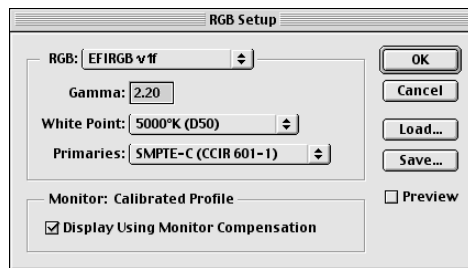
## Loading the monitor settings file

The EFIRGB ICC monitor settings file can be used in Photoshop or other applications that support ICC profiles to define a source color space for printing to the EX7750.

---

### TO LOAD THE MONITOR SETTINGS FILE IN PHOTOSHOP 5.X

1. Start Photoshop.
2. Choose Color Settings from the File menu, and choose RGB Setup from the Color Settings submenu.
3. In the RGB Setup dialog box, click Load.
4. Browse to the System Folder:Preferences:ColorSync Profiles folder, select the EFIRGB ICC file, and then click Open.



**NOTE:** If you are using ColorSync 2.5, the ColorSync profile is located in the System Folder:ColorSync Profiles folder.

The EFIRGB v1f file appears as the selection.

5. Click OK.

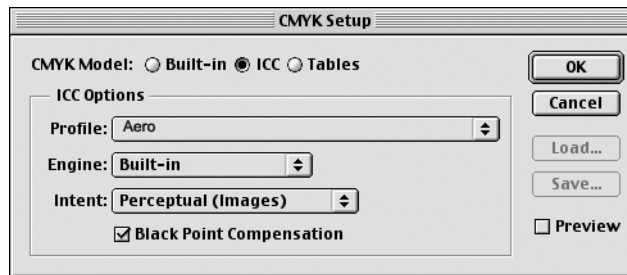
## Loading the ICC printer device profile

The ICC printer profile enables RGB-to-CMYK conversions that are specific to the kind of printer you are using.

---

### TO LOAD THE ICC PRINTER DEVICE PROFILE IN PHOTOSHOP 5.X

1. Start Photoshop.
2. Choose Color Settings from the File menu and choose CMYK Setup from the Color Settings submenu.
3. In the CMYK Setup dialog box, choose ICC as the CMYK color model.
4. Select the profile that corresponds to the EX7750 from the Profile menu.



5. Click OK.

For more information about ICC profiles, see your Photoshop documentation.

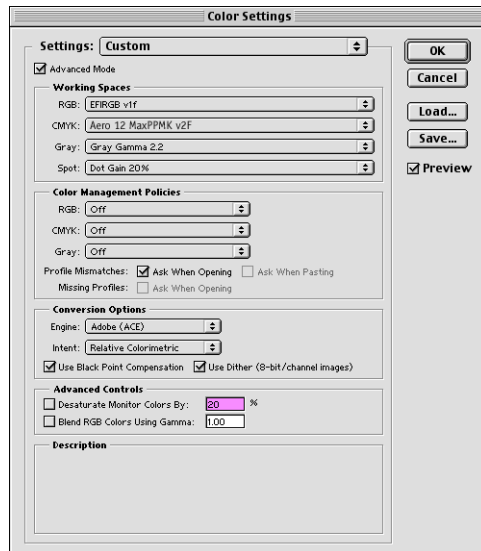
## Loading monitor settings and the ICC device profile in Photoshop 6.x/7.x

In Photoshop 6.x and 7.x, you can load the monitor settings file and the ICC profile at the same time.

---

**TO LOAD THE MONITOR SETTINGS FILE AND THE ICC PRINTER  
DEVICE PROFILE IN PHOTOSHOP 6.x/7.x**

1. Start Photoshop.
2. Choose Color Settings from the Edit menu and then choose Advanced Mode.
3. Choose EFI RGB from the RGB menu.
4. Choose the profile that corresponds to the EX7750 from the CMYK menu.



5. Click OK.

For more information, see your Photoshop documentation.

This page is intentionally blank.

## Chapter 3: Downloading Installers with WebTools

WebTools allow you to manage your EX7750 remotely from the Internet or from your company's intranet.

For more information about using WebTools, see the *Printing Guide*.

### Setting up WebTools

To enable network users to access and use WebTools, you must set specific EX7750 options in Network Setup and Printer Setup. You also must prepare each user's computer to communicate with the EX7750 over the Internet or intranet.

For more information about Network Setup and Printer Setup, see the *Configuration Guide*.

---

#### TO SET UP CLIENT WORKSTATIONS TO USE WEBTOOLS

1. **Enable TCP/IP networking.**
2. **Make sure the workstation has a valid, unique IP address.**
3. **Make sure a supported Internet browser is installed on the computer.**

For more information about supported browsers, see the *Quick Start Guide*.

4. **Make sure Java is enabled in your Internet browser.**

For more information about setting up the EX7750 and the network, see the *Configuration Guide*.

## Using the WebTools Installer

The Installer WebTool allows you to download installers for printer drivers directly from the EX7750 to your computer.

---

### TO DOWNLOAD PRINTER DRIVERS WITH THE INSTALLER WEBTOOL

1. Start your Internet or intranet browser and enter the DNS name or IP address of the EX7750.
2. Click the WebTools button.
3. Select a login level, enter a password if required, and click OK.

No password is required to log in as Guest. If the administrator has configured Guest access, any user has full access to the Installer WebTool while logged in as Guest.

4. Click Installer.



5. Under the name of your operating system, click the name of the item you want to install.
6. For installation of user software, follow the on-screen instructions.

**7. For installation of printer drivers, continue with the following instructions.**

A dialog box appears, prompting you to save the file to the location you choose.

For Windows computers, a dialog box appears, offering you the choice of running the program across the Internet or intranet or saving it to disk.

For Mac OS computers, a folder named Printer Driver is downloaded to the desktop in a BinHex-encoded, compressed format. If your Internet browser is equipped with an expander utility, such as StuffIt Expander, the folder decodes and decompresses automatically.

**8. For Windows computers, browse to the location where you want to save the Prntdrv.exe and click Save.**

**For Mac OS computers, if the Printer Driver folder did not automatically decode and decompress, start the utility that performs that function.**

**9. For Windows computers, double-click the Prntdrv.exe file, browse to the location where you want to install the folder, and click Next.**

The folder is installed to the location you specified.

**10. Install the appropriate printer driver for your operating system.**

<b>For instructions on installing the printer driver for</b>	<b>See</b>
Windows 2000/XP	<a href="#">“Installing the PostScript or PCL printer driver for Windows 2000/XP” on page 1-2</a>
Mac OS 9 and Mac OS X Classic mode	<a href="#">“Setting up Mac OS 9 printer drivers and printer description files” on page 2-2</a>
Mac OS X Native mode	<a href="#">“Setting up Mac OS X v10.2 printer drivers and printer description files” on page 2-5</a>

This page is intentionally blank.



## Chapter 4: Troubleshooting

This chapter provides troubleshooting tips.

### On a Windows computer

#### Setting up printing on Windows 2000/XP computers

If you have problems installing the EX7750 with Windows 2000/XP, try installing another PostScript printer (such as the Apple LaserWriter IIG), and then install the EX7750. Installing another printer ensures that all files are properly installed and available. For instructions, see your Windows documentation.

For information about problems you may encounter using the PostScript Printer Driver for Windows 2000/XP, see the Adobe README file (readme) included on the User Software CD. For Windows 2000/XP, see your Windows documentation.

#### Problems with the Fiery utilities on Windows computers

If you are experiencing problems with connections for the Fiery utilities, try the following:

1. **Make sure the TCP/IP networking protocol is enabled.**
2. **Make sure the connection is configured correctly for your site.**

To check the current configuration, start a Fiery utility and choose Open from the File menu. Select the EX7750 and click Modify to see current settings. If the settings are incorrect, you can change them in this dialog box.

## On a Mac OS computer

### Setting up the EX7750 in the Mac OS 9 Chooser

If Auto-setup does not work and you are prompted to select the printer description file, select the appropriate EX7750 file on your hard disk: System Folder: Extensions: Printer Descriptions folder, “ColorPASS-Z7000 Ver 3.0”.

### Installing screen fonts

If you experience problems installing the PostScript screen fonts from the User Software CD to the System Folder: Fonts folder, try the following:

1. **Quit all applications and close all windows.**
2. **Create a new folder and name it “Uninstalled Fonts.”**  
This folder must be located outside of the System Folder.
3. **Move fonts you are not using from the System Folder: Fonts folder to the Uninstalled Fonts folder.**
4. **Install the fonts from the User Software CD to a folder called CD fonts. Copy the fonts to the System Folder: Fonts folder.**
5. **Create aliases to the System Folder: Fonts folder and the Uninstalled Fonts folder.**
6. **Place both aliases on your desktop.**
7. **When necessary, use the aliases to open both folders and move fonts between them.**

If you have any applications running, you must quit and restart them in order to view and use the newly installed fonts.

Or, you can try combining fonts from multiple suitcases into a single suitcase.

### Setting up the EX7750 in the Mac OS X Print Center

If Auto-setup does not work and you are prompted to select the printer description file, select the appropriate EX7750 file in your hard disk: System: Library: Printers: PPDs: Contents: Resources: language folder (for example, en.lproj), “ColorPASS-Z7000 Ver 3.0”.

# Index

## A

- Adobe Acrobat
  - for EFI Impose 1-21
  - installation 1-21
- Adobe PostScript 3 fonts xii
- Adobe PostScript printer driver, *see* PostScript printer driver
- Advanced Controller Interface xii
- AppleTalk
  - connecting to Mac OS 2-3

## C

- cable, color server xii
- Calibrat folder, for Windows users 1-34
- Calibration folder, for Macintosh users 2-23
- Chooser
  - selecting the server in 2-3
  - setting up server in Mac OS 9 4-2
- CMYK Color Reference.ps 2-23
- Cmyk\_ref.ps 1-34
- Color Files folder 2-23
- Color Files folder, for Macintosh users 2-23
- color management files xii, xiv
- color reference files xiv, 2-23
  - for Macintosh users 2-23
  - for Windows users 1-34
- color server, specifications xii
- ColorSync and ICC color management files xiv
- ColorSync Profiles 2-11
- ColorWise color management files xii
- ColorWise Pro Tools 1-19
  - configuring the connection to the Fiery (Mac OS) 2-14
  - (Windows) 1-23
  - installing for Mac OS 2-11
  - installing for Windows 1-19

- Command WorkStation xi
  - configuring the connection 1-30
  - installing for Windows 1-19
- Command WorkStation LE
  - configuring the connection for Mac OS X 2-19
- Configuration page 1-16, 1-24
- connecting
  - Windows 2000/XP with TCP/IP 1-8
- connection on Windows, configuring 1-24 to 1-27
- Custom21.ps (Windows) 1-34
- Custom34.ps (Windows) 1-34

## D

- device name 1-26, 2-15, 2-18
- DNS name 1-24, 2-18
- Domain Name Server, *see* DNS
- downloading
  - printer drivers 3-2

## E

- EFI Fiery Mail Port, installing 1-19, 1-27
- Efrgb.icc monitor settings file for
  - Mac OS 2-24
- Efrgb.icc monitor settings file for
  - Windows 1-36
- EPS files xiii
- Ethernet 1000BaseTX cable xii
- Ethernet 100BaseTX cable xii
- Ethernet, SNAP frame type xii

## F

- Fast Ethernet 100BaseTX cable xii
- Fast Ethernet 10BaseT cable xii
- Fiery Downloader 1-19
  - configuring the connection for Mac OS X 2-19
- EPS files xiii

- installing for Mac OS 2-11
- installing for Windows 1-19
- overview xiii
- PDF files xiii
- Fiery Job Monitor 1-19
- Fiery Printer Delete Utility 1-1, 1-23
  - installing on Windows 1-19
- Fiery Spooler
  - configuring the connection on
    - Mac OS 2-17 to 2-18
- Fiery utilities
  - configuring the connection on
    - Windows 1-24 to 1-27
  - installing for Mac OS 2-11
  - installing for Windows 1-19
  - problems on Windows 4-1
- fonts
  - Adobe PostScript 3 xii
  - installer for Mac OS 2-22
  - installing 2-22, 4-2
  - printer fonts 2-22
  - screen fonts 2-22
- Fonts folder 4-2

## **G**

Gigabit Ethernet 1000BaseTX cable xii

## **I**

- ICC and ColorSync color management
  - files xiv
- ICC copier device profile 2-26
  - loading in Photoshop 5.x
    - (Mac OS) 2-26
- ICC device profile
  - loading in Photoshop 6.x/7.x
    - (Mac OS) 2-26
- ICC folder (Windows) 1-34
- ICC monitor settings profile, specifying in
  - Photoshop (Mac OS) 2-25
- ICC profiles folder, for Macintosh
  - users 2-23
- Impose xii

## **Installable Options**

- specifying, from Mac OS 9 printer
  - driver 2-4
- specifying, from Windows 2000/XP
  - printer driver 1-5
- Installer WebTool, *see* WebTools
- installers
  - Mac OS 2-11
  - Windows 1-19
- installing
  - Adobe Acrobat 1-21
  - Adobe PostScript printer,
    - Windows 2000/XP 1-2
  - Command WorkStation 1-19
  - Mac OS software 2-11
  - PostScript printer driver for Mac OS 2-2
  - screen and printer fonts 2-22
  - software for Mac OS 2-11
  - software for Windows 1-19
- IP address 1-27
- IPP printing setup
  - on Windows 2000/XP 1-17
- IPX
  - printing for Windows 2000/XP 1-13
  - Windows 2000/XP 1-13

## **J**

Java 3-1

## **M**

- Mac OS 9
  - printer setup 2-2
  - setting up server in 4-2
- Mac OS v10.2
  - printer setup 2-5
- Mac OS X
  - setting up server in 4-2
- Mac OS
  - fonts 2-22
  - Installer WebTool 2-1
  - installing color files 2-23
  - installing Fiery utilities 2-1, 2-11

- installing software 2-11
- troubleshooting 4-2
- uninstalling software 2-13
- monitor settings file, Mac OS 2-25

## N

- NetWare client setup
  - Windows 2000/XP 1-13

## O

- Oemsetup.inf file 1-3

## P

- PANTONE Book.ps 2-23
- PANTONE.ps 1-34
- PDF files xiii
- Photoshop 5.x
  - loading the copier device profile
    - (Mac OS) 2-26
  - loading the ICC copier device profile
    - (Windows) 1-37
  - loading the ICC DC device profile
    - (Windows) 1-37
  - loading the ICC monitor settings file
    - (Mac OS) 2-25
  - loading the RGB working space profile
    - (Windows) 1-36
- Photoshop 6.x/7.x
  - loading the ICC copier device profile
    - (Windows) 1-38
  - loading the ICC monitor settings file
    - (Windows) 1-38
  - loading the monitor settings and the ICC device profile (Mac OS) 2-26
- PostScript
  - printing from Mac OS 2-2 to 2-22
  - printing from Windows 2000/XP 1-1
  - screen fonts xiii
- PostScript Printer Description file, *see* PPD
- PostScript printer driver
  - for Mac OS 2-2
  - installing using WebTools 3-2 to 3-3
  - Windows 2000/XP 1-2

- PowerPoint, RGB color reference file 2-23
- PPD

- copying files for Windows
    - applications 1-39
  - overview xiii
  - selecting the PPD in the Chooser 4-2
  - selecting the PPD in the Print Center 4-2
  - Windows 2000/XP 1-4
- Print Center
  - selecting the server in 2-6
  - setting up server in Mac OS X 4-2
- Print Setup Utility
  - selecting the server in 2-6
- Printer Driver, installable options
  - Windows 2000/XP 1-5
- printer drivers
  - deleting 1-23
  - downloading installers 3-2
- Printer Info Options
  - specifying, from Mac OS X printer driver 2-10
- printer setup
  - Mac OS 9 2-2
  - Mac OS v10.2 2-5
- printing
  - Windows 2000/XP 1-8
- Prntdrv.exe file 3-3

## R

- RGB page 01 2-23
- RGB page 02 2-23
- Rgb\_01.doc 1-34
- Rgb\_02.ppt 1-34

## S

- screen fonts 2-22, 4-2
- SMB printing setup
  - on Windows 2000/XP 1-15, 1-16
- specifications, color server xii
- Stand21.ps (Windows) 1-34
- Stand34.ps (Windows) 1-34

**T**

- thinnet cable xii
- troubleshooting
  - Mac OS computers 4-2
  - Windows computers 4-1

**U**

- Uninstalled Fonts folder 4-2
- uninstalling
  - Mac OS software 2-13
- unshielded twisted pair (UTP) cable xii
- User Software CD
  - contents (Mac OS) 2-2
  - contents (Windows) 1-19
  - installing from, for Mac OS 2-2, 2-23
  - troubleshooting fonts 4-2

**W**

- WebDownloader WebTool, *see* WebTools
- WebTools
  - Installer xv, 3-2 to 3-3
  - setting up 3-1
  - Status xv
  - WebDownloader xv
  - WebLink xv
- WebTools Installer
  - downloading printer drivers 3-2
- Windows
  - copying color files 1-34
  - installing Fiery utilities 1-19
  - troubleshooting 4-1
- Windows Color Files folder 1-34
- Windows 2000/XP
  - IPX 1-13
  - PostScript printer driver 1-2
  - printing requirements 1-8
  - setting up PostScript printing 1-1
  - troubleshooting 4-1
- Windows NT 4.0
  - troubleshooting 4-1
- WINS Name Server 1-16
- Word, RGB color reference file 2-23