

VERSION 16.0.1.0  
OCTOBER 2019  
702P08014

# Xerox® FreeFlow® VI Suite What's New in Version 16.0.1.0 Reference Guide

© 2019 Xerox Corporation. All rights reserved. XEROX® and XEROX and Design®, FreeFlow®, FreeFlow Makeready®, FreeFlow Output Manager®, FreeFlow Process Manager®, VIPP®, and GlossMark® are trademarks of Xerox Corporation in the United States and/or other countries. Other company trademarks are acknowledged as follows:

Adobe PDFL - Adobe PDF Library Copyright © 1987-2019 Adobe Systems Incorporated.

Adobe®, the Adobe logo, Acrobat®, the Acrobat logo, Acrobat Reader®, Distiller®, Adobe PDF JobReady™, InDesign®, PostScript®, and the PostScript logo are either registered trademarks or trademarks of Adobe Systems Incorporated in the United States and/or other countries. All instances of the name PostScript in the text are references to the PostScript language as defined by Adobe Systems Incorporated unless otherwise stated. The name PostScript also is used as a product trademark for Adobe Systems implementation of the PostScript language interpreter, and other Adobe products. Copyright 1987-2019 Adobe Systems Incorporated and its licensors. All rights reserved. Includes Adobe® PDF Libraries and Adobe Normalizer technology.

Intel®, Pentium®, Centrino®, and Xeon® are registered trademarks of Intel Corporation. Intel Core™ Duo is a trademark of Intel Corporation.

Intelligent Mail® is a registered trademark of the United States Postal Service.

Macintosh®, Mac®, and Mac OS® are registered trademarks of Apple, Inc., registered in the United States and other countries. Elements of Apple Technical User Documentation used by permission from Apple, Inc.

Novell® and NetWare® are registered trademarks of Novell, Inc. in the United States and other countries. Oracle® is a registered trademark of Oracle Corporation Redwood City, California.

PANTONE™ and other Pantone Inc. trademarks are the property of Pantone Inc. All rights reserved. QR Code™ is a trademark of Denso Wave Incorporated in Japan and/or other countries.

TIFF® is a registered trademark of Aldus Corporation.

The Graphics Interchange Format© is the Copyright property of CompuServe Incorporated. GIFSM is a Service Mark of CompuServe Incorporated.

Windows®, Windows® 10, Windows Server® 2012, Windows Server® 2016, and Windows Server® 2019, and Internet Explorer are trademarks of Microsoft Corporation; Microsoft® and MS-DOS® are registered trademarks of Microsoft Corporation.

All other product names and services mentioned in this publication are trademarks or registered trademarks of their respective companies. They are used throughout this publication for the benefit of those companies, and are not intended to convey endorsement or other affiliation with the publication.

Companies, names, and data used in examples are fictitious unless otherwise noted.

While every care has been taken in the preparation of this material, no liability is accepted by Xerox Corporation arising out of any inaccuracies or omissions.

Changes are made periodically to this document. Changes, technical inaccuracies, and typographical errors are corrected in subsequent editions.

Produced in the United States of America.

# Table of Contents

- 1 Introduction ..... 5
  - Important License Information ..... 6
  - Platform Support ..... 7
  - VM Environments Support ..... 8
  - Adobe Acrobat and Acrobat Reader ..... 9
  - Purpose and Use of This Document..... 10
  - Upgrade Recommendation ..... 11
  - Xerox Specialty Inks..... 12
- 2 FreeFlow VI Compose 16.0.1.0..... 13
  - New Functionality in the Version 16.0.1.0 Release ..... 14
  - Enhanced Commands Available in VI Compose 16.0.1.0 ..... 15
- 3 FreeFlow VI Design Express 16.0.1.0..... 17
  - Platform Support ..... 18
  - New Features in FreeFlow VI Design Express ..... 19
  - Enhancements ..... 20
- 4 FreeFlow VI Design Pro 16.0.1.0..... 21
  - Update to Use VI Compose 16.0.1.0 Command Set ..... 22
  - Platform Support ..... 23
  - New Features in FreeFlow VI Design Pro..... 24
- 5 FreeFlow VI Explorer 16.0.1.0 ..... 25
  - Platform Support ..... 26
  - New Features in FreeFlow VI Explorer..... 27
- 6 FreeFlow VI eCompose Version 16.0.1.0 Release ..... 29
  - Platform Support ..... 30
  - New Features in FreeFlow VI eCompose..... 31
  - Supported Digital Front-End Devices ..... 33
- 7 Important Information About PDF..... 35
  - Adobe PDF Print Engine (APPE)..... 36
  - PDF Using VI Suite Tool Set ..... 37
    - Adobe Acrobat and Adobe Reader Information..... 37
    - Configuring Adobe Acrobat and Adobe Reader Privileged Folder Settings..... 37

## Table of Contents

# Introduction

This chapter contains:

- [Important License Information](#) ..... 6
- [Platform Support](#) ..... 7
- [VM Environments Support](#) ..... 8
- [Adobe Acrobat and Acrobat Reader](#) ..... 9
- [Purpose and Use of This Document](#)..... 10
- [Upgrade Recommendation](#) ..... 11
- [Xerox Specialty Inks](#)..... 12

The FreeFlow VI Suite 16.0.1.0 release is an update to the FreeFlow VI Suite 16.0.0.0 and 16.0.0.x Patch releases. The term VI Suite refers to one or more of the available FreeFlow VI Suite products.

## Before you begin:

- Stop all currently running FreeFlow VI Suite programs.
- Close and exit all currently running FreeFlow VI Suite programs.

For example, if you are installing VI eCompose, before you begin installing a newer version of the product, exit VI eCompose. If VI eCompose services are running, before beginning any installation, close and exit the program.

## Important License Information

If you are upgrading from a prior major release, for example, versions 15.0, 15.0.1.0, 15.0.2.0, or 15.0.3.0, to enable the product, obtain a version 16.0 license file.

- For customers: Use the original SWAP key supplied with your original order or purchase. At the License Menu, enter the SWAP key.
- For internal updates: Refer to the information supplied in the ISA or MAPS systems.



**Note:** When you are updating FreeFlow VI Compose software on a FreeFlow Print Server (FFPS) device, no license update is required if the previous version of the software license was activated.

# Platform Support

All FreeFlow VI Suite products run on the following 32-bit or 64-bit operating systems:

- Windows 10
- Windows Server 2012
- Windows Server 2012 R2
- Windows Server 2016
- Windows Server 2019

For FreeFlow VI Design Express operating system support, refer to Adobe Creative Suite.

As of version 16.0.1.0, Windows 7, Windows 8.1, Windows Server 2008 and 2008 R2 are no longer supported for any FreeFlow VI Suite products.



**Note:** The following software is not supported: Foundation, Core, Home, Mobile, the Internet of Things, Starter, S, Team, and Essential editions of all Microsoft Operating Systems.

## VM Environments Support

All products, except the VI Compose product, can operate in a VM environment. No support is offered for the configuration or management of the VM system. Where applicable, for license activation, each VM system requires a unique NIC or Mac address.



# Adobe Acrobat and Acrobat Reader

For important information about versions of Adobe Acrobat and Adobe Acrobat Reader, access the FreeFlow VI eCompose information, then refer to the Adobe Acrobat section.

It is important to review the Adobe Acrobat section for information about APPE, PDF, and VT requirements, and the required settings for Adobe Acrobat and Adobe Acrobat Reader.

## Purpose and Use of This Document

If you are upgrading from a prior release of the FreeFlow VI Suite software, to become familiar with new or enhanced content, read this document.

This document contains all updates made since the last documentation update for VI Suite 16.0.0.0.

Refer to the FreeFlow VI Suite 16.0.1.0 release documentation on the [www.xerox.com](http://www.xerox.com) website.

1. Access the Xerox.com website.
2. Select **Support and Drivers**.
3. Search for `VIPP`.
4. On the FreeFlow Variable Information Suite tab, select **Documentation**.



**Note:** You can find FreeFlow VI Design Express documentation in the Installer download zip file that has the .dmg extension. For the latest information, it is recommended that you read the Readme.txt file that is installed with each product.

## Upgrade Recommendation

It is recommended that whenever you upgrade one component of the FreeFlow VI Suite, you upgrade all other VI Suite components. Keeping all components up to date helps to avoid VI Suite product mismatches that can result in VIPP jobs failing with errors such as `Command Not Found`.

When using FreeFlow VI Design Express, it is critical that you upgrade any VI component that renders the VIPP application. The components include VI Compose on the printer, and VI eCompose from VIPP to PDF.

To locate the latest versions of the FreeFlow VI Suite components on the [www.xerox.com](http://www.xerox.com) website:

1. In a Web browser, type [www.xerox.com](http://www.xerox.com).
2. Select **Support and Drivers**.
3. Search for `VIPP`.
4. On the FreeFlow Variable Information Suite tab, select the **Software** tab.



**Note:** The version of FreeFlow VI Compose software and the version of FFPS server are not dependent upon each other. An FFPS server is pre-installed with a demonstration version of FreeFlow VI Compose software limited to 200 pages per job. It is recommended that you upgrade the version of FreeFlow VI Compose software on the FFPS server with the latest available FreeFlow VI Compose release. The FFPS Update Manager is one way to update the version of FreeFlow VI Compose software on FFPS servers.

When the VI Suite of applications is running in trial mode, the number of pages per job is limited to 200 pages. When printing VI jobs on office printers under trial mode, the limit is 10 pages. For production printers, the trial mode limit is 200 pages.

## Xerox Specialty Inks

Xerox Specialty Inks (XSI) are an option on Xerox DC1000/800 and iGen5 devices, supported by FFPS, and EFI digital front end devices. Xerox Specialty Inks include:

- Clear
- Gold
- Silver



**Note:** Prior to the version 14.0 software release, the Xerox Specialty Inks feature was known as Clear Dry Ink, and the only color option was Clear. With the addition of the Gold and Silver options, the feature is renamed Xerox Specialty Inks.

# FreeFlow VI Compose 16.0.1.0

This chapter contains:

- [New Functionality in the Version 16.0.1.0 Release](#) ..... 14
- [Enhanced Commands Available in VI Compose 16.0.1.0](#)..... 15

This section lists all new and enhanced VIPP commands and features introduced since the release of VI Compose 16.0.0.0.

All the features and enhancements listed are supported in the FreeFlow VI Compose 16.0.1.0 release.

You can use the FFPS Update Manager to update FFPS controllers with the latest version of the VI Compose software. There is no dependency on the version of VI Compose and the version of the FFPS server software. Each can be updated independently of each other.

For EFI, or other digital front-end devices, you can download an ISO file from the [www.xerox.com](http://www.xerox.com) website. If needed, you can burn a CD from the ISO file, then install the file on any VIPP-supported device, including a FreeFlow print server. For more information on VI Compose installation, refer to the *VI Compose User Guide*.

For more information on the features and enhancements in this document, refer to:

- The Readme.txt file supplied as part of the installed software.
- *VIPP Language Reference Manual*
- The user guide for your device.

## New Functionality in the Version 16.0.1.0 Release

The FreeFlow VI version 16.0.1.0 release adds specialty imaging support for void pantograph.

Void Pantograph vector pattern is a new feature intended as a new Specialty imaging effect hiding text in the document and is revealed on the copied image.

A Void Pantograph vector pattern can be used to fill a box and any following text printed on top of the box will activate the effect.

Requirements:

- Use **SETPAT** to create a pattern.
- Use the pattern to fill the shape.
- Draw a shape using **DRAWB**, **DRAWC**, **DRAWPOL**, **DRAWPATH**, or similar commands.
- Void Pantograph is applicable on the monochrome images also and ensure that monochrome images are TIFF images.
- Draw a monochrome image on top of the color shape. Use the **SCALL** or **ICALL** command.

**Example 1:** 500 3000 1750 300 VP02 DRAWB  
/NHEB 50 SETFONT  
575 2770 MOVETO (VOID) SHL  
/VP02 [/VPPG1 18 32 OWHITE BLACK]  
0 0 0 1 1 SETPAT

# Enhanced Commands Available in VI Compose 16.0.1.0

## SETPAT

The **SETPAT** is enhanced to support Void Pantograph effects.

Syntax of Void Pantograph effect:

```
/PATkey [ /VPPG1 textPixelFrequency backgroundPixelFrequency color1
color2] Htrans Vtrans rotate Hscale Yscale SETPAT
```

### Where

- /VPPG1 is a built-in PPATkey used to define a void pantograph effect.
- textPixelFrequency defines the size or frequency of the text pixel that needs to be hidden.
- backgroundPixelFrequency defines the size or frequency of the background pixel that hides the text. This supposed to be greater than double the value of textPixelFrequency.
- color1 is the pixel's background color of the background pixels for void pantograph effect.
- color2 is the color of background and text pixels for void pantograph effect

Example of Void Pantograph:

```
/VP04 [/VPPG1 12 36 OWHITE BLACK] 0 0 0 1 1 SETPAT
```






# FreeFlow VI Design Express 16.0.1.0

This chapter contains:

- [Platform Support](#) ..... 18
- [New Features in FreeFlow VI Design Express](#) ..... 19
- [Enhancements](#) ..... 20

This section lists all new and enhanced VI Design Express (VDE) features introduced since the release of the FreeFlow VI Design Express version 16.0.0.0.

For more information on each feature, refer to the *VI Design Express User Guide* and the *README.txt* file installed with the software. The FreeFlow VI Design Express software is a VI design tool. It runs as a plug-in to Adobe InDesign Creative Cloud 2018, and Creative Cloud 2019 on Windows and Intel Mac OS X. Refer to the Adobe InDesign or Adobe Creative Suite documentation for OS support.

 **Note:** Support for Adobe InDesign CS 5.5 and CS 6 is removed for VI Design Express version 16.0.1.0.


## Attention

### Adobe Extension Manager

It is recommended that you upgrade to the latest version of the Adobe Extension Manager.

### Upgrade VI Compose on the printer

If you are using VI Design Express version 16.0.1.0, ensure that you upgrade VI Compose to version 16.0.1.0 on the printer.

 **Caution:** Do not choose automatic Adobe InDesign or Creative Cloud updates without first verifying that your version of VDE runs on that later version of the Adobe software. You have to disable this automatic update process.

## Platform Support

VI Design Express software runs on the following 32-bit or 64-bit operating systems:

- Windows 10
- Windows Server 2012
- Windows Server 2012 R2
- Windows Server 2016
- Windows Server 2019
- Mac OS X (Intel Processor), version 10.5.x through 10.13.x.

For FreeFlow VI Design Express for Mac and Windows operating system support, refer to the Adobe InDesign or Adobe Creative Suite documentation.



### Note:

- Support for VDE on Windows 10 systems is dependent on Adobe support for that operating system.
- As of version 16.0.1.0, Windows 7, Windows 8.1, Windows Server 2008, Windows Server 2008 R2 are no longer supported for any FreeFlow VI Suite product.

# New Features in FreeFlow VI Design Express

## **Update to Use VI Compose 16.0.1.0 Command Set**

VDE is updated to use the new features and enhancements made to the VIPP language.

## **Advanced Functions Enhancements**

The Advanced Functions options is enhanced in the following area:

If an Advanced Function is created, an option to save the advance function can be saved to the local system. When a new InDesign document is created, the saved Advanced Function can be used.

## **Generation of Correlation Key in InDesign File**

When adding Specialty Imaging Correlation Mark effects to an InDesign File, an option to create the Correlation Key, to be printed on transparency is provided. When the InDesign file is printed, options to print the Correlation Key as a separate file is provided.

# Enhancements

## Specialty Imaging Effects

Using vector pattern technology introduced in 15.0.2.0, Specialty Imaging effects such as Void Pantograph also be included for monochrome TIFF image files. When adding a VDE vector pattern Swatch, an option to create Void pantograph is available. The effect applied area contains dots on the page and when the page is copied a hidden text obscured by the dots becomes visible. Results of using Void Pantograph can vary between printers and controllers.



**Note:** Removed VI\_Imagescript.zip file from the Windows and Mac installer packages.

# FreeFlow VI Design Pro 16.0.1.0

This chapter contains:

- [Update to Use VI Compose 16.0.1.0 Command Set.....](#) 22
- [Platform Support .....](#) 23
- [New Features in FreeFlow VI Design Pro.....](#) 24

This section lists all new and enhanced VI Design Pro (VDP) features available since the VI Design Pro 16.0.0.0 release.

# Update to Use VI Compose 16.0.1.0 Command Set

VDP has been updated to use the new features and enhancements made to the VIPP language.

## Platform Support

VI Design Pro software runs on the following 32-bit or 64-bit operating systems:

- Windows 10
- Windows Server 2012
- Windows Server 2012 R2
- Windows Server 2016
- Windows Server 2019



**Note:** As of version 16.0.1.0, Windows 7, Windows 8.1, Windows Server 2008, Windows Server 2008 R2 are no longer supported for any FreeFlow VI Suite product.

# New Features in FreeFlow VI Design Pro

## **Update to Use VI Compose 16.0.1.0 Command Set**

VI Design Pro is updated to support the new features and enhancements made to the VIPP language.

## **Void Pantograph (SETPAT)**

SmartEditor dialog support for **SETPAT** to support Void Pantograph.

## **Void Pantograph Specialty Imaging Effects**

The SETPAT command has been enhanced to allow creation of a Void Pantograph effect.



# FreeFlow VI Explorer 16.0.1.0

This chapter contains:

- [Platform Support](#) ..... 26
- [New Features in FreeFlow VI Explorer](#)..... 27

This section lists all new and enhanced VI Explorer (VIE) features that are available since the release of VI Explorer 16.0.0.0.

The FreeFlow VI Explorer is a Windows-based VIPP proofing tool. FreeFlow VI Explorer can also support VIPP Normalization and Demographic modes.

## Platform Support

VI Explorer software runs on the following 32-bit or 64 bit operating systems:

- Windows 10
- Windows Server 2012
- Windows Server 2012 R2
- Windows Server 2016
- Windows Server 2019



**Note:** As of version 16.0.1.0, Windows 7, Windows 8.1, Windows Server 2008, Windows Server 2008 R2 are no longer supported for any FreeFlow VI Suite product.



**Note:** For Multi-Processor controllers such as CiPress PS RIP Users:

- The architecture of the FFPS CiPress and similar multi-processor devices requires the submission of a page-independent file to the controller. To manage this, the VI Compose software is modified to run a VIPP Normalize process on a VI Project Container before it passes the file on to print.
- The VIPP Normalization process can take a significant amount of time before the application prints. An alternative to VIPP Normalization inline is to use the FreeFlow VI Explorer VIPP Normalization option. This option allows the VIPP Normalization to occur outside of the controller. After the VIPP file has been normalized, it can be sent to the controller.

# New Features in FreeFlow VI Explorer

## **Update to Use VI Compose 16.0.1.0 Command Set**

VI Explorer is updated to support the new features and enhancements made to the VIPP language.



# FreeFlow VI eCompose Version 16.0.1.0 Release

This chapter contains:

- [Platform Support](#) ..... 30
- [New Features in FreeFlow VI eCompose](#) ..... 31
- [Supported Digital Front-End Devices](#) ..... 33

This section lists all new and enhanced VI eCompose (VIeC) features available since the VI eCompose 16.0.0.0 release.

FreeFlow VI eCompose is a Windows-based, production-level, VIPP-to-PDF generator. FreeFlow VI eCompose supports additional features:

- Splitting a PDF into child PDFs
- PDF security
- A powerful rule-based dispatch system

## Platform Support

VI eCompose software runs on the following 32-bit or 64-bit operating systems:

- Windows 10
- Windows Server 2012
- Windows Server 2012 R2
- Windows Server 2016
- Windows Server 2019



**Note:** As of version 16.0.1.0, Windows 7, Windows 8.1, Windows Server 2008, Windows Server 2008 R2 are no longer supported for any FreeFlow VI Suite product.

# New Features in FreeFlow VI eCompose

## VI Compose Software Version 16.0.1.0 Support

VI eCompose software is updated updated to support the FreeFlow VI Compose 16.0.1.0 command set.

VI eCompose software is updated to support the new features and enhancements made to the VIPP language.

## User Account Enhancements

The following functionality is enabled through the configuration file. For details, refer to the FreeFlow VI eCompose User Guide.

### User Account Strict Passwords

When enabled, user Account passwords must meet the following criteria:

- A password must be at least 8 characters in length.
- A password must contain lower and upper case letters.
- A password must contain at least one special character, for example, #, !, \$.
- A password must not contain contextual information such as the username or website name.

When enabled, a user password may not be reused.

### User Account Lockout

When enabled, if the user fails to login successfully after a configurable number of attempts, the account is locked out for a configurable period of time.

### User Account Log Out

When enabled, after 30 minutes of inactivity, logged-in users are logged off automatically. The duration of the inactivity period can be configured.

### User Account Activity

Unsuccessful login attempts are logged in the file vtpweb.log.

## PDF Resources and Compatibility with APPE

The Adobe PDF Print Engines (APPE) implementation on some non-Xerox Document Front Ends (DFEs) have difficulty printing PDF files generated by eCompose from VIPP jobs that call out PDF files as resources. This is due to the way pdfmark operator of Adobe is implemented within APCSDK, Adobe PDF Converter SDK, also known as Normalizer or Distiller.

Adobe pdfmark operator implementation inserts the resource PDFs into the generated PDF as embedded referenced XObjects. The implementation of APPE on some non-Xerox DFEs do not support embedded referenced XObjects, and the PDF resources do not print correctly. eCompose can now perform an optional post-processing step flattening which extracts the embedded referenced XObjects and replaces them with equivalent form XObjects. Because not all workflows include PDF resources, not all DFEs have trouble processing embedded referenced XObjects, and this extra step incurs some additional performance overhead, it is not performed by default. To assist in performance tuning, an optional XObject pre-check can also be configured, this pre-check can detect the presence

of XObjects in the job and if none are found, or none are found within a certain number of pages, then the flattening step is not performed.



## Supported Digital Front-End Devices

Xerox FreeFlow Print Server (FFPS) version 9.3 SP1 or above.

EFI Fiery version, Xerox Press Print Server, US v1.0 Software FS200 Pro or above.



# Important Information About PDF

This chapter contains:

- [Adobe PDF Print Engine \(APPE\) ..... 36](#)
- [PDF Using VI Suite Tool Set ..... 37](#)

## Adobe PDF Print Engine (APPE)

Media and finishing control is available with PDF output when generated by FreeFlow VI eCompose which requires option to be selected and printing to the FFPS OR when printing VIPP directly to the FFPS using the APPE path.

To print to the FFPS, ensure that you set the FFPS queue to APPE and the format to PDF.

Ensure that you have the latest FFPS software installed on the target print device, version 93.D4.x.x or later.

## PDF Using VI Suite Tool Set

You can convert a VIPP job to PDF using one of three methods.

1. VI eCompose is the FreeFlow VI Suite production-level VIPP-to-PDF solution. The VI eCompose software runs on a Windows server. Four input clients are provided, including LPR, Watched Folder, Job Submission Client, and the Web submission client. The VI eCompose software, based on the content of the VIPP application, generates a Master PDF. It can generate child PDF files also and move those PDF files to the next step in your workflow using the VI eCompose Dispatch module. For more information on FreeFlow VI eCompose, refer to the *FreeFlow VI eCompose User Guide* or go to [www.xerox.com](http://www.xerox.com).
2. VI Design Pro, the interactive design environment for the generation of code-based VIPP applications, has an **Export job as PDF** option from the file menu. You can use this option to generate a Master PDF file. For more information on FreeFlow VI Design Pro, refer to the *FreeFlow VI Design Pro User Guide* or [www.xerox.com](http://www.xerox.com).
3. VI Design Express is the Adobe InDesign plug-in that runs on a Windows PC or a Mac OS system. This plug-in allows for rapid development of delimited-based VIPP applications. FreeFlow VI Design Express supports an option to generate PDF output using the **VI Design Express PDF** option from the InDesign Export menu.

## Adobe Acrobat and Adobe Reader Information

If you are using PDF Objects as VIPP resources in your VIPP application and you need to view the PDF file output from VI eCompose using Adobe Acrobat or Adobe Reader, ensure that you are using Adobe Acrobat or Adobe Reader, version 10.1.4 or later.

## Configuring Adobe Acrobat and Adobe Reader Privileged Folder Settings

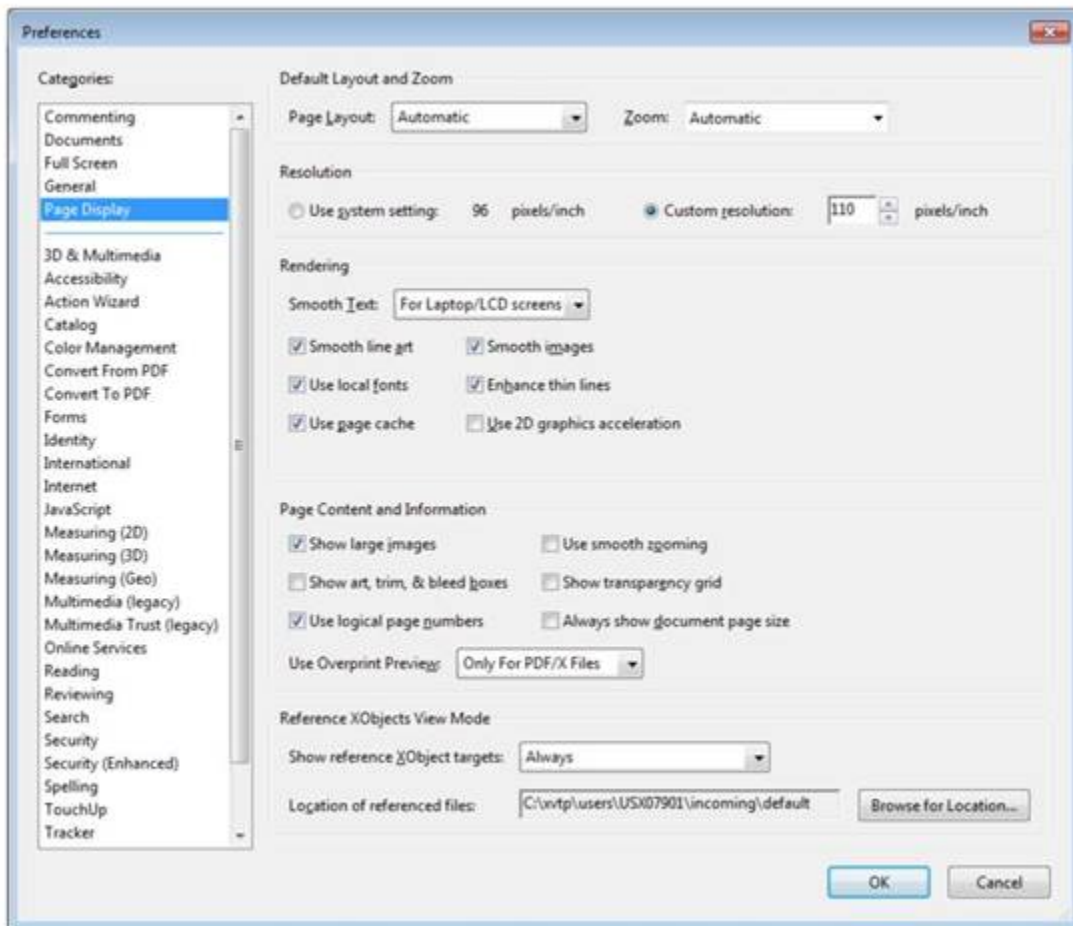
To view PDF files that contain VIPP PDF resources, ensure that you open the PDF file from an Adobe Acrobat or Adobe Reader privileged folder.

To create a privileged folder, edit the following Adobe Acrobat or Adobe Reader preferences:

1. From the Adobe application, select **Edit** → **Preferences**.
2. Under Categories, select **Page Display**.
3. At the bottom of the window, under Reference XObjects View Mode, for Show reference XObject targets, select **Always**.

## Important Information About PDF

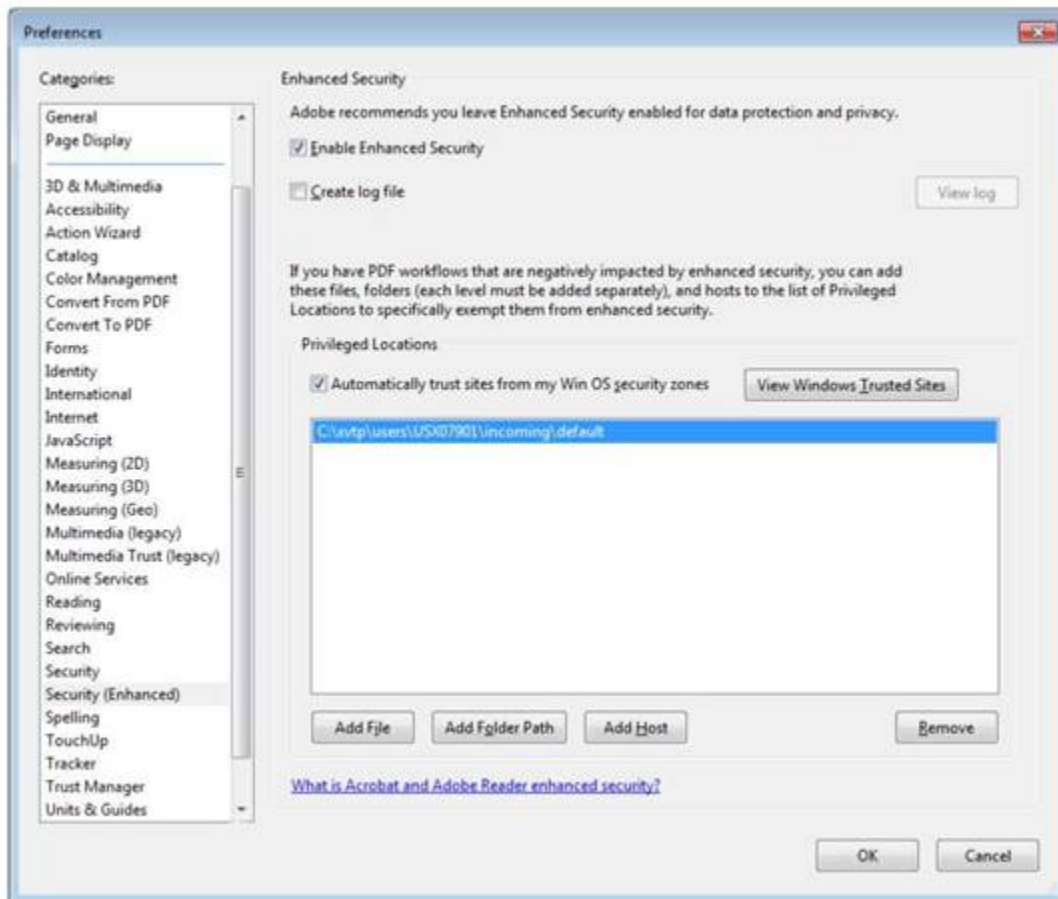
4. For Location of referenced files, specify the path to the directory that contains the PDF files generated by VIeC.



### Note:

- It is recommended that you select the VIeC incoming folder instead of the folder containing a specific job.
- As long as all of the PDFs generated by VIeC are under the same incoming folder hierarchy, all referenced PDFs will be located and properly displayed.

5. Under Categories, select **Security (Enhanced)**.
6. Under Privileged Locations, click **Add Folder Path**, then specify the same folder as specified for Location of referenced files.



**Note:**

- The referenced XObjects are independent of the Enhanced Security checkbox. The state of the checkbox does not govern viewing of referenced XObjects.
- Any of the following can cause Adobe Acrobat or Adobe Reader to display **Missing**: followed by the name of the missing PDF resource:
  - The version of Acrobat/Reader does not support Referenced XObjects
  - The preferences were not setup correctly
  - The PDF file was opened from a non-privileged folder







