

Version 16.0.0.0
October 2018
702P07083



Xerox[®] FreeFlow[®] VI Suite

What's New in Version 16.0.0.0

Reference Guide

© 2018 Xerox Corporation. All rights reserved. XEROX[®] and XEROX and Design[®], FreeFlow[®], FreeFlow Makeready[®], FreeFlow Output Manager[®], FreeFlow Process Manager[®], VIPP[®], and GlossMark[®] are trademarks of Xerox Corporation in the United States and/or other countries. Other company trademarks are acknowledged as follows:

Adobe PDFL - Adobe PDF Library Copyright © 1987-2018 Adobe Systems Incorporated.

Adobe[®], the Adobe logo, Acrobat[®], the Acrobat logo, Acrobat Reader[®], Distiller[®], Adobe PDF JobReady[™], InDesign[®], PostScript[®], and the PostScript logo are either registered trademarks or trademarks of Adobe Systems Incorporated in the United States and/or other countries. All instances of the name PostScript in the text are references to the PostScript language as defined by Adobe Systems Incorporated unless otherwise stated. The name PostScript also is used as a product trademark for Adobe Systems implementation of the PostScript language interpreter, and other Adobe products. Copyright 1987-2018 Adobe Systems Incorporated and its licensors. All rights reserved. Includes Adobe[®] PDF Libraries and Adobe Normalizer technology.

Intel[®], Pentium[®], Centrino[®], and Xeon[®] are registered trademarks of Intel Corporation. Intel Core[™] Duo is a trademark of Intel Corporation.

Intelligent Mail[®] is a registered trademark of the United States Postal Service.

Macintosh[®], Mac[®], and Mac OS[®] are registered trademarks of Apple, Inc., registered in the United States and other countries. Elements of Apple Technical User Documentation used by permission from Apple, Inc.

Novell[®] and NetWare[®] are registered trademarks of Novell, Inc. in the United States and other countries. Oracle[®] is a registered trademark of Oracle Corporation Redwood City, California.

PANTONE[™] and other Pantone Inc. trademarks are the property of Pantone Inc. All rights reserved. QR Code[™] is a trademark of Denso Wave Incorporated in Japan and/or other countries.

TIFF[®] is a registered trademark of Aldus Corporation.

The Graphics Interchange Format[©] is the Copyright property of CompuServe Incorporated. GIFSM is a Service Mark of CompuServe Incorporated.

Windows[®], Windows[®]7, Windows[®] 8, Windows[®] 8.1, Windows[®] 10, Windows Server[®] 2008, Windows Server[®] 2012, Windows Server[®] 2016, and Internet Explorer are trademarks of Microsoft Corporation; Microsoft[®] and MS-DOS[®] are registered trademarks of Microsoft Corporation.

All other product names and services mentioned in this publication are trademarks or registered trademarks of their respective companies. They are used throughout this publication for the benefit of those companies, and are not intended to convey endorsement or other affiliation with the publication.

Companies, names, and data used in examples are fictitious unless otherwise noted.

While every care has been taken in the preparation of this material, no liability is accepted by Xerox Corporation arising out of any inaccuracies or omissions.

Changes are made periodically to this document. Changes, technical inaccuracies, and typographical errors are corrected in subsequent editions.

Produced in the United States of America.

Table of Contents

- 1 Introduction.....1-1**
 - Important License Information.....1-1
 - Platform Support.....1-1
 - VM Environments Support.....1-2
 - Adobe Acrobat and Acrobat Reader.....1-2
 - Purpose and Use of This Document.....1-2
 - Upgrade Recommendation.....1-3
 - Xerox Specialty Inks.....1-3

- 2 FreeFlow VI Compose 16.0.0.0.....2-1**
 - New Functionality in the Version 16.0.0.0 Release.....2-1
 - Enhanced Commands Available in VI Compose 16.0.0.0.....2-2

- 3 FreeFlow VI Design Express 16.0.0.0.....3-1**
 - Platform Support.....3-1
 - New Features in FreeFlow VI Design Express.....3-2
 - Enhancements.....3-3

- 4 FreeFlow VI Design Pro 16.0.0.0.....4-1**
 - Update to Use VI Compose 16.0.0.0 Command Set.....4-1
 - Platform Support.....4-1
 - New Features in FreeFlow VI Design Pro.....4-2

- 5 FreeFlow VI Explorer 16.0.0.0.....5-1**
 - Platform Support.....5-1
 - New Features in FreeFlow VI Explorer.....5-2

- 6 FreeFlow VI eCompose Version 16.0.0.0 Release.....6-1**
 - Platform Support.....6-1
 - New Features in FreeFlow VI eCompose.....6-2
 - Supported Digital Front-End Devices.....6-2

- 7 Important Information About PDF.....7-1**
 - Adobe PDF Print Engine (APPE).....7-1
 - PDF Using VI Suite Tool Set.....7-1
 - Adobe Acrobat and Adobe Reader Information.....7-2

Table of Contents

Configuring Adobe Acrobat and Adobe Reader Privileged Folder Settings.....7-2

Introduction

The FreeFlow VI Suite 16.0.0.0 release is an update to the FreeFlow VI Suite 15.0, and 15.0 Service Pack releases. The term VI Suite refers to one or more of the available FreeFlow VI Suite products.

Before you begin:

- Stop all currently running FreeFlow VI Suite programs.
- Close and exit all currently running FreeFlow VI Suite programs.

For example, if you are installing VI eCompose, before you begin installing a newer version of the product, exit VI eCompose. If VI eCompose services are running, before beginning any installation, close and exit the program.

Important License Information

If you are upgrading from a prior major release, for example, versions 15.0, 15.0.1.0, 15.0.2.0, or 15.0.3.0, to enable the product, obtain a version 16.0 license file.

- For customers: Use the original SWAP key supplied with your original order or purchase. At the License Menu, enter the SWAP key.
- For internal updates: Refer to the information supplied in the ISA or MAPS systems.

Note

When you are updating FreeFlow VI Compose software on a FreeFlow Print Server (FFPS) device, no license update is required if the previous version of the software license was activated.

Platform Support

All FreeFlow VI Suite products run on the following 32-bit or 64-bit operating systems:

- Windows 7 SP1
- Windows 8.1
- Windows 10
- Windows Server 2008

Introduction

- Windows Server 2008 R2
- Windows Server 2012
- Windows Server 2012 R2
- Windows Server 2016

For FreeFlow VI Design Express operating system support, refer to Adobe Creative Suite.

As of version 15.0.2.0, Windows 8 is no longer supported for any FreeFlow VI Suite product.

Note

The following software is not supported: Foundation, Core, Home, Mobile, the Internet of Things, Starter, "S", Team, and Essential editions of all Microsoft Operating Systems.

VM Environments Support

All products, except the VI Compose product, can operate in a VM environment. No support is offered for the configuration or management of the VM system. Where applicable, for license activation, each VM system requires a unique NIC or Mac address.

Adobe Acrobat and Acrobat Reader

For important information about versions of Adobe Acrobat and Adobe Acrobat Reader, access the FreeFlow VI eCompose information, then refer to the Adobe Acrobat section.

It is important to review the Adobe Acrobat section for information about APPE, PDF, and VT requirements, and the required settings for Adobe Acrobat and Adobe Acrobat Reader.

Purpose and Use of This Document

If you are upgrading from a prior release of the FreeFlow VI Suite software, to become familiar with new or enhanced content, read this document.

This document contains all updates made since the last documentation update for VI Suite 15.0.2.0.

Refer to the FreeFlow VI Suite 16.0.0.0 release documentation on the www.xerox.com website.

1. Access the Xerox.com website.
2. Select **Support and Drivers**.
3. Search for VIPP.
4. On the FreeFlow Variable Information Suite tab, select **Documentation**.

Note

You can find FreeFlow VI Design Express documentation in the Installer download zip file that has the .dmg extension. For the latest information, it is recommended that you read the Readme.txt file that is installed with each product.

Upgrade Recommendation

It is recommended that whenever you upgrade one component of the FreeFlow VI Suite, you upgrade all other VI Suite components. Keeping all components up to date helps to avoid VI Suite product mismatches that can result in VIPP jobs failing with errors such as `Command Not Found`.

When using FreeFlow VI Design Express, it is critical that you upgrade any VI component that renders the VIPP application. The components include VI Compose on the printer, and VI eCompose (VIPP to PDF).

To locate the latest versions of the FreeFlow VI Suite components on the www.xerox.com website:

1. In a Web browser, type `www.xerox.com`.
2. Select **Support and Drivers**.
3. Search for VIPP.
4. On the FreeFlow Variable Information Suite tab, select the **Software** tab.

Note

The version of FreeFlow VI Compose software and the version of FFPS server are not dependent upon each other. An FFPS server is pre-installed with a demonstration version of FreeFlow VI Compose software limited to 200 pages per job. It is recommended that you upgrade the version of FreeFlow VI Compose software on the FFPS server with the latest available FreeFlow VI Compose release. The FFPS Update Manager is one way to update the version of FreeFlow VI Compose software on FFPS servers.

When the VI Suite of applications is running in trial mode, the number of pages per job is limited to 200 pages. When printing VI jobs on office printers under trial mode, the limit is 50 pages. For production printers, the trial mode limit is 200 pages.

Xerox Specialty Inks

Xerox Specialty Inks (XSI) are an option on Xerox DC1000/800 and iGen5 devices, supported by FFPS, and EFI digital front end devices. Xerox Specialty Inks include:

- Clear
- Gold
- Silver

Note

Prior to the version 14.0 software release, the Xerox Specialty Inks feature was known as Clear Dry Ink, and the only color option was Clear. With the addition of the Gold and Silver options, the feature is renamed Xerox Specialty Inks.

2

FreeFlow VI Compose 16.0.0.0

This section lists all new and enhanced VIPP commands and features introduced since the release of VI Compose 15.0.3.0.

All the features and enhancements listed are supported in the FreeFlow VI Compose 16.0.0.0 release.

You can use the FFPS Update Manager to update FFPS controllers with the latest version of the VI Compose software. There is no dependency on the version of VI Compose and the version of the FFPS server software. Each can be updated independently of each other.

For EFI, or other digital front-end devices, you can download an ISO file from the www.xerox.com website. If needed, you can burn a CD from the ISO file, then install the file on any VIPP-supported device, including a FreeFlow print server. For more information on VI Compose installation, refer to the *VI Compose User Guide*.

For more information on the features and enhancements in this document, refer to:

- The Readme.txt file supplied as part of the installed software.
- *VIPP Language Reference Manual*
- The user guide for your device.

New Functionality in the Version 16.0.0.0 Release

The FreeFlow VI version 16.0 release adds specialty imaging support for monochrome images.

You can apply specialty imaging effects to monochrome images, but not to grayscale or color images. Speciality imaging effects include UV, Infrared, Vector Correlation, and Vector Gloss.

Requirements:

- Ensure that monochrome images are TIFF images.
- Draw a shape using DRAWB, DRAWC, DRAWPOL, DRAWPATH, or similar commands.
- Use an SI color for the shape. For Vector Gloss or Correlation, create the SI color using the SETPAT or SETCOL command.
- Draw a monochrome image on top of the color shape. Use the SCALL or ICALL command.

Example 1:

```

% Color and VP/CR definition (possibly in a JDT)
/BLACK100 [ 0 0 0 1 ] SETCOL
/PAPER000 [ 0 0 0 0 ] SETCOL
/VPAT001 [ /VPCR 1 PAPER000 BLACK100 ] 0 0 0 1 1 SETPAT
% draw shape and image on top
ORITL
POINT SETUNIT
[ 36 140
[ 288 140 ]
[ 288 330 ]
[ 36 330 ]
[ 36 140 ]
] VPAT001 DRAWPATH
36 330 MOVETO
(truk.tif) CACHE [ 252 190 ] 0 022 SCALL

```

Example 2: Text on background and TIFF Image on background:

```

DOT3 SETUNIT
% Declaration of VP_GL & VP_CR
/VPGL1 [ /VPGL 1 OWHITE GL_Red] 0 0 0 1 1 SETPAT
/VPCR1 [ /VPCR 1 OWHITE CR_Blue50 ] 0 0 0 1 1 SETPAT
% SI_VP_CR effect on monochrome image (truk.tif)
226 2771 1000 300 VPCR1 DRAWB
/NHEB 50 SETFONT
251 2572 MOVETO (CR Image) SHL
226 2400 1000 530 VPCR1 DRAWB
309 2380 MOVETO (truk.tif) 1.5 0 ICALL
% SI_VP_GL effect on monochrome image (truk1.tif)
1347 2775 1017 300 VPGL1 DRAWB
/NHEB 50 SETFONT
1388 2566 MOVETO (GL Image) SHL
1347 2400 1000 530 VPGL1 DRAWB
1468 2380 MOVETO (truk1.tif) 1.5 0 ICALL
% SI_UV effect on monochrome image (truk2.tif)
269 1163 917 196 UV_PURPLE DRAWB
/NHEB 40 SETFONT
342 1020 MOVETO (UV Image) SHL
269 880 917 530 UV_PURPLE DRAWB
320 860 MOVETO (truk2.tif) 1.5 0 ICALL
% SI_IR effect on monochrome image (truk3.tif)
1420 1176 917 217 IR_DARKBLUE1 DRAWB
/NHEB 40 SETFONT
1540 1020 MOVETO (IR Image) SHL
1420 880 917 530 IR_DARKBLUE1 DRAWB
1480 860 MOVETO (truk3.tif) 1.5 0 ICALL

```

Enhanced Commands Available in VI Compose 16.0.0.0

SETLAYOUT/DEFINELAYOUT

- The Added /BleedMode option is effective only when the /PageClip command is set to true.

Note

The `BleedMode` command is incompatible with the array syntax for the `/Rotate` parameter, and shows unexpected results for `BleedMode 1` and `BleedMode 2`.

- When `/Rotate` parameter is provided an array value, for example, `/Rotate [0]`, `/BleedMode 1` produces what `/BleedMode 2` produces, and `/BleedMode 2` produces what `/BleedMode 1` produces.
 - To get proper `/BleedMode 1` and `/BleedMode 2` results, the `/Rotate` parameter uses a valid numeric value. For example, `/Rotate 0`, `/Rotate 90`, `/Rotate 180`, or `/Rotate 270`.
- When `/PageClip` is set to `false`, the unique behavior, regardless of `BleedMode` settings, preserves the bleed space on all sides and does not clip.
 - For inside crop marks, set the `/MarkOffset` command to a negative value.

DRAWPFF

The `/type` parameter has a new value: the `/PR` print form button. When you trigger the `/PR` print form button, the Windows Print dialog window appears.

BSTRIP

The `BSTRIP` command allows you to strip leading and trailing blanks from the input string, or not to strip any elements.

To strip both leading and trailing blanks, use the `BSTRIP` command without options.

SCALL/RUNPDF

The `SCALL` and `RUNPDF` commands support selection of a PDF crop box, using the new parameter `/PDFCropping`.

Available values:

```
/TrimBox
/CropBox (default)
/ArtBox
/MediaBox
/BleedBox
```

ICALL/SCALL

Updates to the `ICALL` or `SCALL` command include imaging a grayscale TIFF file, using the current color set in the `SETTXC` command, or by a color index.

Previous versions allowed a grayscale TIFF printed with the black color, regardless of the current color. For applications that print a grayscale TIFF with the current color set to something other than black, like after colored text, to retain the previous TIFF output result, modify the syntax.

To keep the previous output result: Before the `SCALL` or `ICALL` commands, add `BLACK SETTXC`, or code a black color index.

DRAWBC

The `/EAN5` option for `/BCkey` was added to enable +5 character support for EAN13 barcodes.

SETPAT

The three-color syntax available for the `SETPAT` command applies to text but not images.

Example of the two-level Correlation Mark approach:

```
/PATkey [ /VPCR |width col1 col2 col3 ] Htr Vtr rot Hsca Ysca SETPAT)
```

Bug Fixes

CACHE

Fixes incorrect SI color.

- The problem is observed with same-named monochrome TIFF images, applied during a cache and reuse scenario.
- The problem occurs when the `CACHE` command is used twice, for example, on a same-named monochrome TIFF image file such as `truk.tif` and when two separate SI color effects, such as `VP/GL`, `VP/CR`, `UV`, or `IR`, are applied, one for each image.

VIPP_invalid_variable_name

Fixes the wrong name reported in an error message when a variable name or XML name is greater than 127.

SCALL/RUNPDF

Fixes the PDF image position when the cropping box origin is not 0,0.

FreeFlow VI Design Express

16.0.0.0

This section lists all new and enhanced VI Design Express (VDE) features introduced since the release of the FreeFlow VI Design Express version 15.0. The 16.0.0.0 version requires a new SWAP key or license file.

For more information on each feature, refer to the *VI Design Express User Guide* and the *README.txt* file installed with the software. The FreeFlow VI Design Express software is a VI design tool. It runs as a plug-in to Adobe InDesign CS5.5, CS6, Creative Cloud 2017, and Creative Cloud 2018 on Windows and Intel Mac OS X. Refer to the Adobe InDesign or Adobe Creative Suite for OS support.

Attention

Adobe Extension Manager

It is recommended that you upgrade to the latest version of the Adobe Extension Manager.

Upgrade VI Compose on the printer

If you are using VI Design Express version 16.0.0.0, ensure that you upgrade VI Compose to version 16.0.0.0 on the printer.

Caution

Do not choose automatic Adobe InDesign or Creative Cloud updates without first verifying that your version of VDE runs on that later version of the Adobe software. You may need to disable this automatic update process.

Platform Support

VI Design Express software runs on the following 32-bit or 64-bit operating systems:

- Windows 7
- Windows 8.1
- Windows 10

- Windows Server 2008
- Windows Server 2008 R2
- Windows Server 2012
- Windows Server 2012 R2
- Windows Server 2016
- Mac OS X (Intel Processor), version 10.5.x through 10.10.x.

For FreeFlow VI Design Express for Mac and Windows operating system support, refer to the Adobe InDesign or Adobe Creative Suite documentation.

Note

- Support for VDE on Windows 10 systems is dependent on Adobe support for that operating system.
- As of version 15.0.2.0, Windows 8 is no longer supported for any FreeFlow VI Suite product.

New Features in FreeFlow VI Design Express

Update to Use VI Compose 16.0.0.0 Command Set

VDE is updated to use the new features and enhancements made to the VIPP language.

Imposition Enhancements

There are imposition enhancements in the following areas:

- Remove Inside Bleed: You can use the Remove Inside Bleed options to create an image with the bleed existing only outside the margins.
- Allow Cut mark inside image

Support for OMR Coding

During export, the Support for OMR Coding option enables generation of Optical Mark Recognition (OMR) code in the VPC file.

Support for Additional +5 char for EAN13 Barcodes

The option enables support of optional, additional +5 char to EAN13 barcodes. The UI under VI Design Express Barcode Options offers support for EAN-5 barcode, under the `Barcode Type` menu. Selecting EAN-5 generates code in the VPC file during export. EAN-5 barcode is common to supplement an EAN-13 barcode. The EAN-5 barcode is placed to the right of the EAN-13 barcode.

Export of Barcode Fonts Used in VI Design Express Document

When a VI Design Express file is exported to a VPC file, barcode fonts used in the file are exported and present in the VPC file. The option eliminates the requirement of having the barcode font installed on the printer.

Advanced Functions Enhancements

The Advanced Functions options are enhanced in the following areas:

- Supports list fields, rules, and data transforms using a right-click, then inserts into the code.

Note

This enhancement applies to the Windows platform only.

- Tags a frame with an AF (advanced functions) name, and inserts the AF code into that frame at export time.

Support for a Print Button in a PDF Forms Document.

Support for a Print button when creating a PDF forms document in VI Design Express.

Other Enhancements

Enhancements added to support the following:

- Selection of PDF cropping
- Ability to fix PDF image positions when the crop box origin is not set to 0,0
- Colorization of grayscale TIFF images

Enhancements

Specialty Imaging Effects

Using vector pattern technology introduced in 15.0.2.0, Specialty Imaging effects are included for monochrome TIFF image files.

4

FreeFlow VI Design Pro 16.0.0.0

This section lists all new and enhanced VI Design Pro (VDP) features available since the VI Design Pro 15.0 release.

Update to Use VI Compose 16.0.0.0 Command Set

VDP has been updated to use the new features and enhancements made to the VIPP language.

Platform Support

VI Design Pro software runs on the following 32-bit or 64-bit operating systems:

- Windows 7
- Windows 8.1
- Windows 10
- Windows Server 2008
- Windows Server 2008 R2
- Windows Server 2012
- Windows Server 2012 R2
- Windows Server 2016

Note

As of version 15.0.2.0, Windows 8 is no longer supported for any FreeFlow VI Suite product.

New Features in FreeFlow VI Design Pro

PDF Cropping (SCALL and RUNPDF)

A new parameter, `/PDFCropping`, is added to the Miscellaneous parameters screen, which enables optional cropping for the PDF page when it is rendered using `SCALL` or `RUNPDF`.

Colorization of Grayscale TIFF Files (ICALL and SCALL)

Grayscale TIFF files now are rendered using the current color. Applications that print grayscale TIFF with the current color set to a color other than Black require modification to retain the previous output result. For example, adding `BLACK SETTXC` before `SCALL` or `ICALL`.

Print Form Button (DRAWPFF)

A new Print Form Button type is added to the `DRAWPFF` dialog. This function enables the creation of a Print button in a PDF file using the `DRAWPFF` command.

EAN5 Barcode (DRAWBC)

Support is added for an EAN5 barcode to `DRAWBC`. By combining two `DRAWBC` commands, one using `/EAN5` and one using `/EAN13`, it is possible to create an EAN13+5 barcode.

Enhanced Debugging Support

A new debug mode allows setting breakpoints, stepping through code, and inspection of variable values.

Note

Selecting the Parameters tab displays a list of active system parameters that are passed to the Smart Editor if invoked at this point in the job execution. The list is shown in alphabetical order. Double-clicking the left mouse button on a parameter adds that parameter to the Watch list.

Imposition (SETLAYOUT/DEFINELAYOUT)

`/MarkOffset` now can be negative, enabling marks inside the page.

A new `/BleedMode` option allows inside bleed to be suppressed.

Note

This option is only effective when `/PageClip` is set to true.

FreeFlow VI Explorer 16.0.0.0

This section lists all new and enhanced VI Explorer (VIE) features that are available since the release of VI Explorer 15.0.

The FreeFlow VI Explorer is a Windows-based VIPP proofing tool. FreeFlow VI Explorer can also support VIPP Normalization and Demographic modes.

Platform Support

VI Explorer software runs on the following 32-bit or 64 bit operating systems:

- Windows 7
- Windows 8.1
- Windows 10
- Windows Server 2008
- Windows Server 2008 R2
- Windows Server 2012
- Windows Server 2012 R2
- Windows Server 2016

Note

As of version 15.0.2.0, Windows 8 is no longer supported for any FreeFlow VI Suite product.

Note

For Multi-Processor controllers such as CiPress PS RIP Users:

- The architecture of the FFPS CiPress and similar multi-processor devices requires the submission of a page-independent file to the controller. To manage this, the VI Compose software is modified to run a VIPP Normalize process on a VI Project Container before it passes the file on to print.
- The VIPP Normalization process can take a significant amount of time before the application prints. An alternative to VIPP Normalization inline is to use the FreeFlow VI Explorer VIPP Normalization option. This option allows the VIPP Normalization to occur outside of the controller. After the VIPP file has been normalized, it can be sent to the controller.

New Features in FreeFlow VI Explorer

Update to Use VI Compose 16.0.0.0 Command Set

VI Explorer is updated to support the new features and enhancements made to the VIPP language.

6

FreeFlow VI eCompose Version 16.0.0.0 Release

This section lists all new and enhanced VI eCompose (VIeC) features available since the VI eCompose 15.0 release.

FreeFlow VI eCompose is a Windows-based, production-level, VIPP-to-PDF generator. FreeFlow VI eCompose supports additional features:

- Splitting a PDF into child PDFs
- PDF security
- A powerful rule-based dispatch system

Platform Support

VI eCompose software runs on the following 32-bit or 64-bit operating systems:

- Windows 7
- Windows 8.1
- Windows 10
- Windows Server 2008
- Windows Server 2008 R2
- Windows Server 2012
- Windows Server 2012 R2
- Windows Server 2016

Note

As of version 15.0.2.0, Windows 8 is no longer supported for any FreeFlow VI Suite product.

New Features in FreeFlow VI eCompose

VI Compose Software Version 16.0.0.0 Support

VI eCompose software is updated to support the FreeFlow VI Compose 16.0.0.0 command set.

VI eCompose software is updated to support the new features and enhancements made to the VIPP language.

VI eCompose Dispatch Integration Improvements

The enhancements in this release have been made to streamline the post-processing of eCompose jobs.

The eCompose profile option `NotifyOnErrorOrWarning` is extended to support an `always` flag. This change allows initiation of job level post-processing directly, without having to use Dispatch.

A new job-level notification macro, `JOB_FILE_PATH`, is added: The macro contains the full path of the original submission file in the context of the submitting client.

The Dispatch `NOOP_CMD_PROC` `CommandTemplate` option is optimized for better performance for jobs with a large number of records.

Supported Digital Front-End Devices

Xerox FreeFlow Print Server (FFPS) version 9.3 SP1 or above.

Important Information About PDF

Adobe PDF Print Engine (APPE)

Media and finishing control is available with PDF output when generated by FreeFlow VI eCompose (Requires option to be selected) and printing to the FFPS OR when printing VIPP directly to the FFPS using the APPE path.

To print to the FFPS, ensure that you set the FFPS queue to APPE and the format to PDF.

Ensure that you have the latest FFPS software installed on the target print device, version 93.D4.x.x or later.

PDF Using VI Suite Tool Set

You can convert a VIPP job to PDF using one of three methods.

1. VI eCompose is the FreeFlow VI Suite production-level VIPP-to-PDF solution. The VI eCompose software runs on a Windows server. Four input clients are provided, including LPR, Watched Folder, and the Web submission client. The VI eCompose software, based on the content of the VIPP application, generates a Master PDF. It can generate child PDF files also and move those PDF files to the next step in your workflow using the VI eCompose Dispatch module. For more information on FreeFlow VI eCompose, refer to the *FreeFlow VI eCompose User Guide* or go to www.xerox.com.
2. VI Design Pro, the interactive design environment for the generation of code-based VIPP applications, has an **Export job as PDF** option from the file menu. You can use this option to generate a Master PDF file. For more information on FreeFlow VI Design Pro, refer to the *FreeFlow VI Design Pro User Guide* or www.xerox.com.
3. VI Design Express is the Adobe InDesign plug-in that runs on a Windows PC or a Mac OS system. This plug-in allows for rapid development of delimited-based VIPP applications. FreeFlow VI Design Express supports an option to generate PDF output using the **VI Design Express PDF** option from the InDesign Export menu.

Adobe Acrobat and Adobe Reader Information

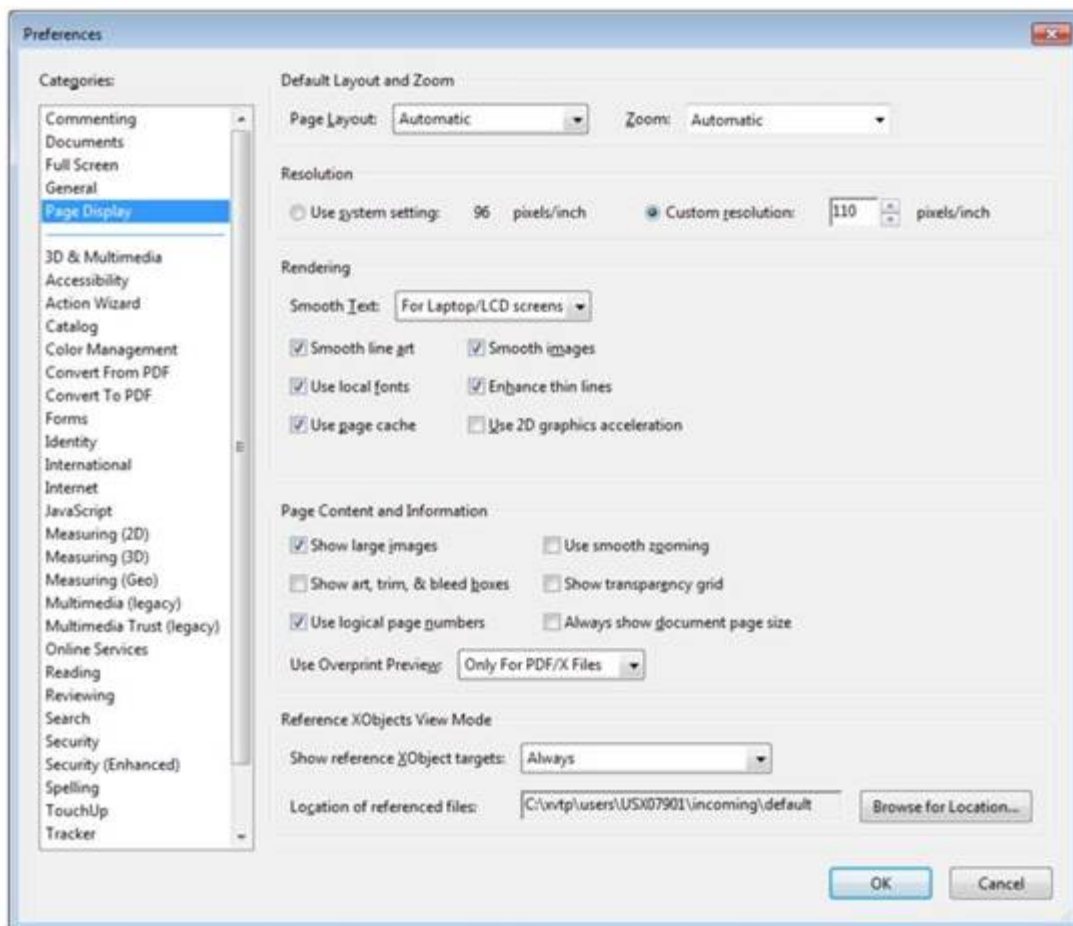
If you are using PDF Objects as VIPP resources in your VIPP application and you need to view the PDF file output from VI eCompose using Adobe Acrobat or Adobe Reader, ensure that you are using Adobe Acrobat or Adobe Reader, version 10.1.4 or later.

Configuring Adobe Acrobat and Adobe Reader Privileged Folder Settings

To view PDF files that contain VIPP PDF resources, ensure that you open the PDF file from an Adobe Acrobat or Adobe Reader privileged folder.

To create a privileged folder, edit the following Adobe Acrobat or Adobe Reader preferences:

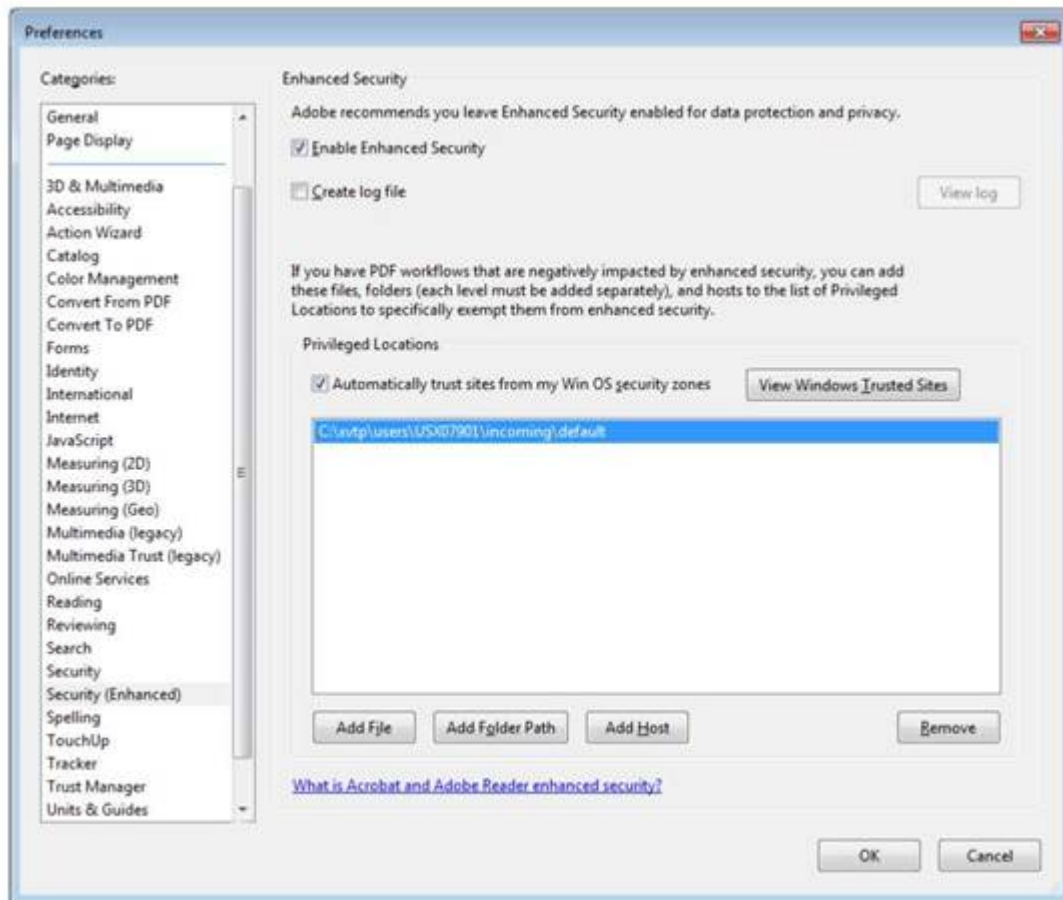
1. From the Adobe application, select **Edit > Preferences**.
2. Under Categories, select **Page Display**.
3. At the bottom of the window, under Reference XObjects View Mode, for Show reference XObject targets, select **Always**.
4. For Location of referenced files, specify the path to the directory that contains the PDF files generated by VIeC.



Note

- It is recommended that you select the VIeC incoming folder instead of the folder containing a specific job.
- As long as all of the PDFs generated by VIeC are under the same incoming folder hierarchy, all referenced PDFs will be located and properly displayed.

5. Under Categories, select **Security (Enhanced)**.
6. Under Privileged Locations, click **Add Folder Path**, then specify the same folder as specified for Location of referenced files.



Note

- The referenced XObjects are independent of the Enhanced Security checkbox. The state of the checkbox does not govern viewing of referenced XObjects.
- Any of the following can cause Adobe Acrobat or Adobe Reader to display `Missing:` followed by the name of the missing PDF resource:
 - The version of Acrobat/Reader does not support Referenced XObjects
 - The preferences were not setup correctly
 - The PDF file was opened from a non-privileged folder

