

Xerox VersaLink Firmware Installation Instructions

Overview

The purpose of this document is to define the procedures for downloading device firmware to the Xerox® VersaLink® Family of products. This document contains procedures for installing firmware, via the device's Embedded Web Server, via a Windows Firmware Download Utility version 5.3.6.0-20190524-1 and via the Mac Installer for WorkCentre® 6515 & Phaser® 6510.

For those using the windows installer method, firmware versions xx.55.21 and higher require FWDL Utility version 5.3.6.0.

Supported Products:

Phaser 6510, WorkCentre 6515 and VersaLink: C400, C405, B400, B405, C7000, C7020/C7025/C7030, C500/C600, C505/C605, B600/B610, B605/B615, B7025/B7030/B7035, C8000/9000.

Methods Supported:

- Network (Ethernet) – Windows Firmware Download Utility or Embedded Web Server
 - To obtain the IP Address of the device, print a Configuration Report.
 1. At the printer control panel, press the **Home** button.
 2. Touch Device > About > **Information Pages**.
 3. Touch **Configuration Report**.
 4. To return to the Home screen, press the **Home** button.
- USB (Type-A to Type-B cable) – Windows Firmware Download Utility only
 - The USB Type-B port is on the back of the printer.

Prerequisites to Installing Firmware

- ✓ Administrative Rights to the workstation are required to run the Windows Firmware Download Utility.
- ✓ Before you download and install new software, determine the current software version installed on your printer.

Procedure to determine the firmware version from the Embedded Web Server:

- A. In the Embedded Web Server, click **System**.
- B. Click **Software Update**.
- C. In the Software Update area, view the Current Version.

Procedure to determine the firmware version at the printer control panel:

- A. At the printer control panel, press the **Home** button.
- B. Touch **Device > Software Update**.
- C. For Current Version, view the version number.

- ✓ Ensure the device is enabled to allow for Software Updates.

Procedure for Enabling Software Updates

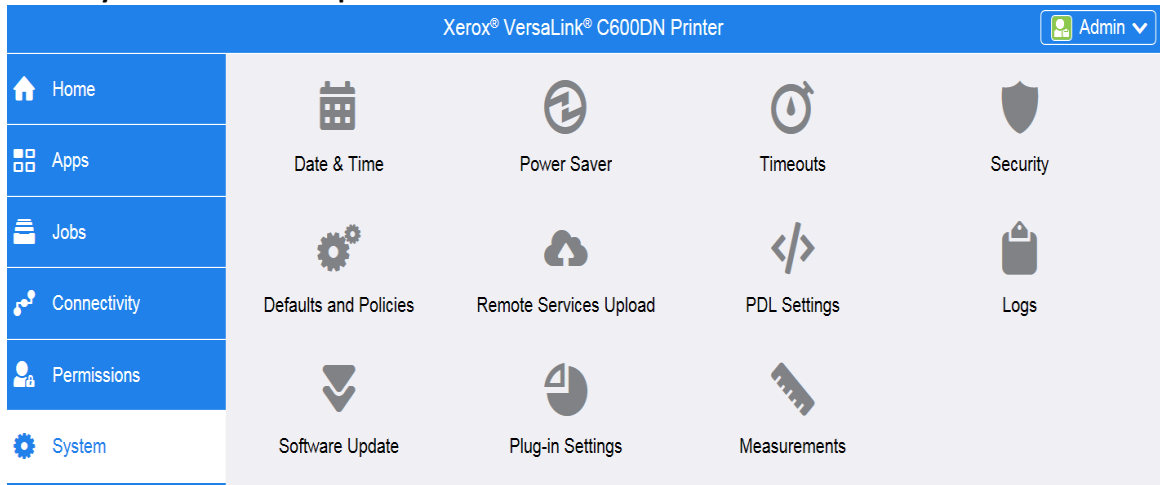
- A. On a computer open a web browser and enter the Device's IP Address. Example: http://<IP Address>
- B. On the device's web page (Xerox Embedded Web Server) Login as a system administrator.
- C. Select **Log In**.
- D. Enter user name and password
- E. Click **[Log In]**.

Note: The default user name is admin and default password is 1111.

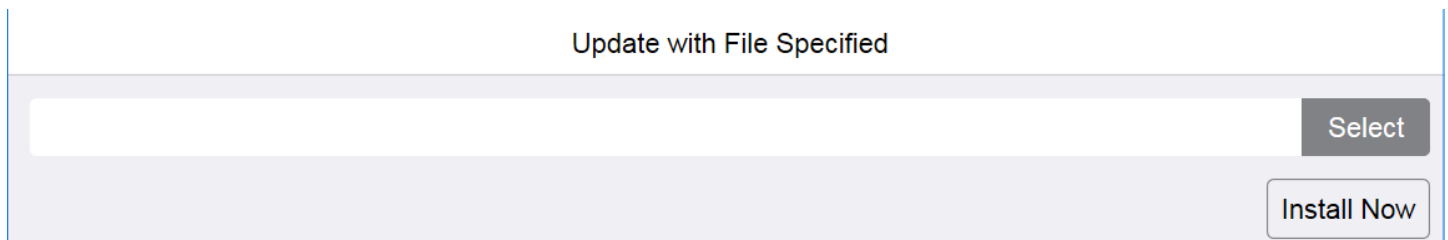
- F. Once logged in, select Home > System > Software Update > **[Enable]**.
- G. Select **[Restart Now]** to reboot the device.

Procedure for using Device's Embedded Web Server

1. Download the *.bin firmware file and put it in a directory that can be browsed to.
2. On a computer open a web browser and enter the Device's IP Address. Example: http://<IP Address>
3. On the device's web page (Xerox Embedded Web Server) Login as a system administrator.
4. Select **[Log In]**. Enter the admin user name and password. Click **[Log In]**.
5. Select **System > Software Update**.



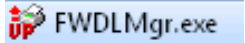
6. Browse for the firmware file (*.bin) by clicking **Select**.
7. Navigate to the location where you downloaded the file, then select the .bin file.
8. Select **Install Now**.

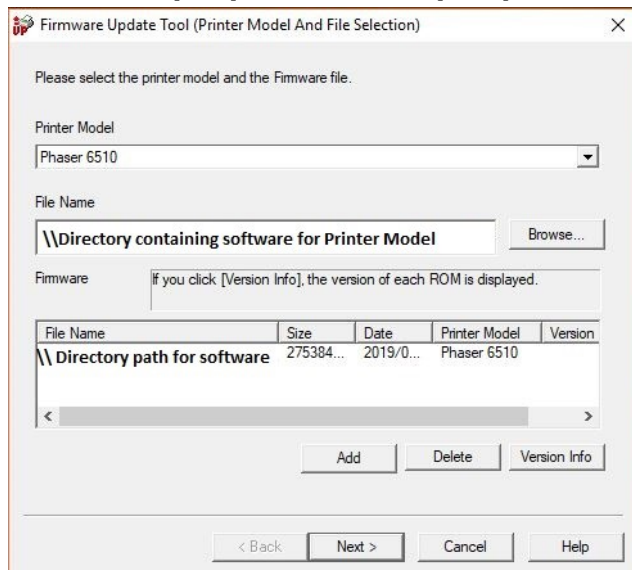


Notes:

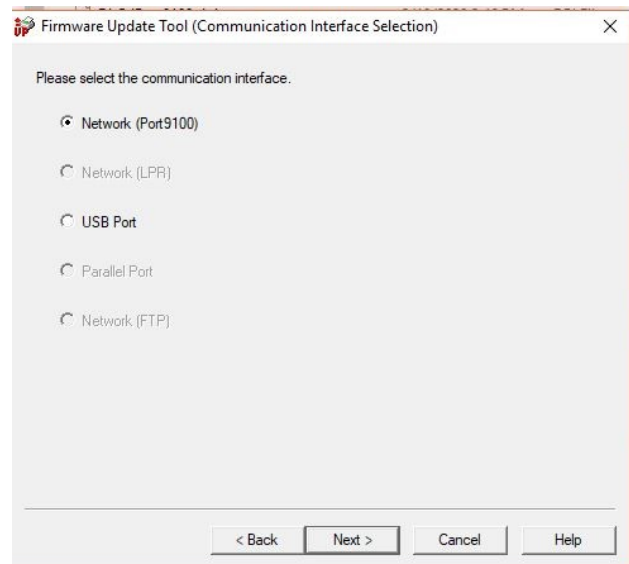
- Software installation begins several minutes after you submit the software to the printer.
- When installation begins, the Embedded Web Server is disabled.
- When the installation completes, the printer restarts and prints a Software Upgrade Report.

Procedure for the Windows Firmware Upgrade Utility

1. Download and extract the **Win_FWTool_5.3.6.0.zip** (Windows Firmware Download Utility).
2. Download the *.bin firmware file and put it in the same location as the Windows Firmware Download Utility.
3. Open “**fwdl5.3.6.0-20190524-1**” directory and double click the **FWDLMgr.exe** file. 
4. Read the End User License Agreement and select **[Agree]**.
5. From the Printer Model dropdown, select your printer (example Phaser 6510).
6. Select **[Browse]**, then navigate to the location of the Firmware “.bin” file.
7. Select the “.bin” file, then select **[Open]**.
8. Select **[Add]** and then select **[Next]**.



To



perform an upgrade via the Network

1. Select **[Network (Port9100)]**, then select **[Next]**.
2. Enter the IP address into the IPAddress Input field.
3. Select **[Next]**. This will start the firmware update.

A status dialog appears within the tool tracking the progress of the update. The printer control panel also shows the firmware update status. You will see a message similar to “An authorized user is making changes to this device, Please wait....”

Important: Do not close the window or interrupt the printer while it upgrades.

4. Once the upgrade is complete, select **[Finish]** within the tool.
5. When Prompted “Would you like to exit?” select **[Yes]**.

To perform an upgrade using a USB cable

1. Select the **[USB Port]**, then click **[Next]**.

A status dialog appears within the tool tracking the progress of the update. The printer control panel also shows the firmware update status. You will see a message similar to “An authorized user is making changes to this device, Please wait....”

Important: Do not close the window or interrupt the printer while it upgrades.

2. Once the upgrade is complete, select **[Finish]** within the tool.
3. When Prompted “Would you like to exit?” select **[Yes]**.

The printer reboots when the upgrade is completed, and a Software Upgrade Report prints.

WC 6515/Phaser 6510 Firmware Upgrade Instructions for Mac

Overview

The purpose of this section is to define the procedures for installing device firmware to the Xerox WorkCentre 6515 and/or the Phaser 6510 using the Mac Operating Systems.

Methods Supported:

- Network (Ethernet) –Mac OS supported
 - To obtain the IP Address of the device, print a Configuration Report or a Startup Page.

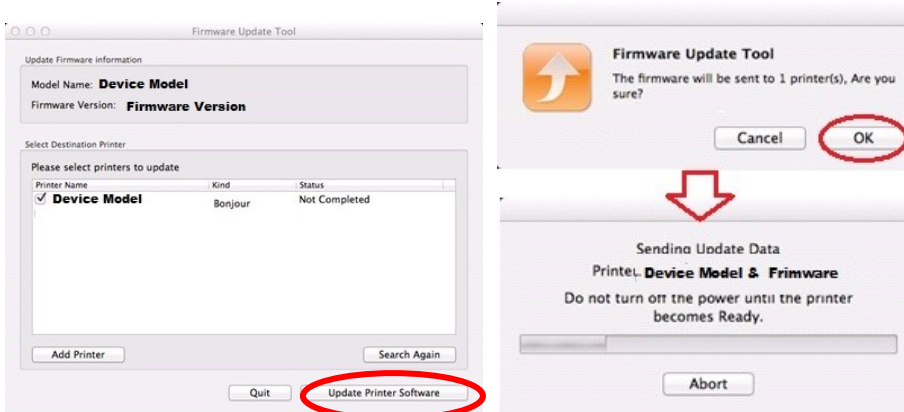
Procedure to use the Mac utility

Important: Must use the designated tool for the desired product. Tools cannot be swapped.

1. Download the <Product Model>_FW.dmg (Mac OSX Firmware Download Utility).
2. Double-click the <Product Model>_FW.dmg file to mount the disk to the computer.
 - a. If the disk image does not automatically open, select the Xerox Firmware Update Tool disk.
3. Double-click on the Firmware Update Tool icon.
4. Select **[Add a Printer]**
 - a. Enter a valid IP address for a device.
 - b. Select **[OK]**.
 - c. Continue adding printers until all the desired devices are listed.

Note: Printer(s) may appear due to an automatic search performed by the tool.

5. Check each printer that requires an upgraded.
6. Select **[Update Printer Software]** button.
7. Select **[OK]** to start the upgrade process.



8. Once the upgrade is complete, select **[Finish]** within the tool.

The printer reboots when the upgrade is completed and a Software Upgrade Report prints.