

# Firmware Installation Instructions

## Overview

The purpose of this document is to define the procedures on downloading device firmware to the Xerox VersaLink Family of products. This document contains procedures for installing firmware via a Windows Firmware Download Utility “Win\_FWTTool\_v5.3.3.8.zip” and via the device’s Embedded Web Server.

## Supported Products:

VersaLink: C400, C405, B400, B405, C7000, C7020/C7025/C7030, C500/C600, C505/C605, B600/B610, B605/B615, B7025/B7030/B7035

## Methods Supported:

- Network (Ethernet) – Windows Firmware Download Utility or Embedded Web Server
  - To obtain the IP Address of the device, print a Configuration Report.
    1. At the printer control panel, press the **Home** button.
    2. Touch Device > About > **Information Pages**.
    3. Touch **Configuration Report**.
    4. To return to the Home screen, press the **Home** button.
- USB (Type-A to Type-B cable) – Windows Firmware Download Utility only
  - The USB Type-B port is on the back of the printer.

## Prerequisites to Installing Firmware

- ✓ Administrative Rights to the workstation are required to run the Windows Firmware Download Utility.
- ✓ Before you download and install new software, determine the current software version installed on your printer.
  - Procedure to determine the firmware version from the Embedded Web Server:*
    - A. In the Embedded Web Server, click **System**.
    - B. Click **Software Update**.
    - C. In the Software Update area, view the Current Version.
  - Procedure to determine the firmware version at the printer control panel:*
    - A. At the printer control panel, press the **Home** button.
    - B. Touch **Device > Software Update**.
    - C. For Current Version, view the version number.
- ✓ Ensure the device is enabled to allow for Software Updates.
  - Procedure for Enabling Software Updates*
    - A. On a computer open a web browser and enter the Device’s IP Address. Example: http://<IP Address>
    - B. On the device’s web page (Xerox Embedded Web Server) Login as a system administrator.
    - C. Select **Log In**.
    - D. Enter user name and password
    - E. Click **[Log In]**.

**Note:** The default user name is admin and default password is 1111.

    - F. Once logged in, select Home > System > Software Update > **[Enable]**.
    - G. Select **[Restart Now]** to reboot the device.

# Procedure for using Device's Embedded Web Server

1. Download the \*.bin firmware file and put it in a directory that can be browsed to.
2. On a computer open a web browser and enter the Device's IP Address. Example: http://<IP Address>
3. On the device's web page (Xerox Embedded Web Server) Login as a system administrator.
4. Select **[Log In]**. Enter user name and password. Click **[Log In]**.  
**Note:** The default user name is admin and default password is 1111.
5. Select **System > Software Update**.



6. Browse for the firmware file (\*.bin) by clicking **Select**.
7. Navigate to the location where you downloaded the file, then select the .bin file.
8. Select **Install Now**.



## Notes:

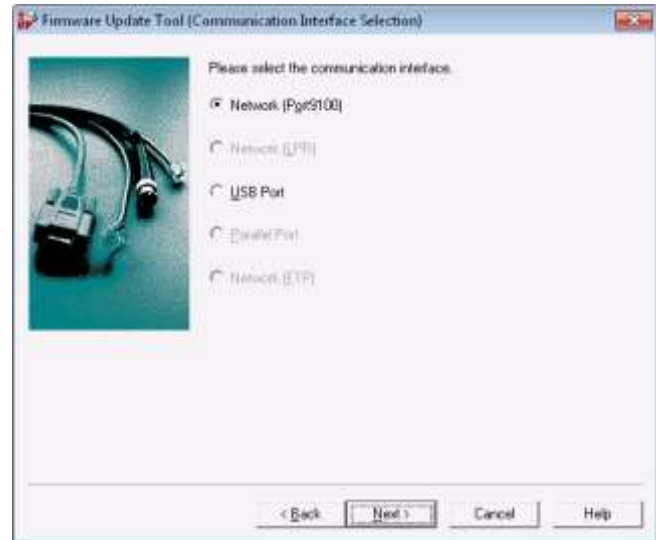
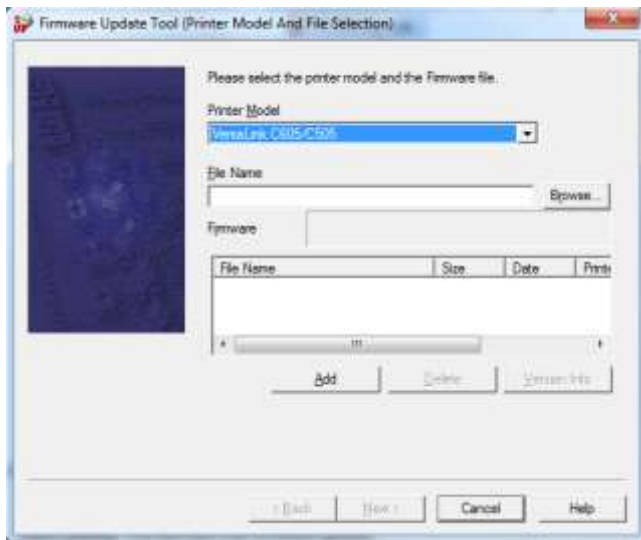
- Software installation begins several minutes after you submit the software to the printer.
- When installation begins, the Embedded Web Server is disabled.
- When the installation completes, the printer restarts and prints a Software Upgrade Report.

# Procedure for the Windows Firmware Upgrade Utility

1. Download and extract the **Win\_FWTool\_v5.3.3.8.zip** (Windows Firmware Download Utility).
2. Download the \*.bin firmware file and put it in the same location as the Windows Firmware Download Utility.
3. Open “**fwdl5.3.3.8ww-160921-1**” directory and double click the **FWDLMgr.exe** file.



4. Read the End User License Agreement and select [**Agree**].
5. From the Printer Model dropdown, select your printer (example VersaLink C505).
6. Select [**Browse**], then navigate to the location of the Firmware “.bin” file.
7. Select the “.bin” file, then select [**Open**].
8. Select [**Add**] and then select [**Next**].



## To perform an upgrade via the Network

1. Select [**Network (Port9100)**], then select [**Next**].
2. Enter the IP address into the IPAddress Input field.
3. Select [**Next**]. This will start the firmware update.  
A Firmware update status appears on the Update in Progress screen. The printer control panel also shows the firmware update status. You will see a message similar to “An authorized user is making changes to this device, Please wait....”

**Important:** Do not close the window or interrupt the printer while it upgrades.

4. Once the upgrade is complete, select [**Finish**] within the tool.
5. When Prompted “Would you like to exit?” select [**Yes**].

## To perform an upgrade using a USB cable

1. Select the [**USB Port**], then click [**Next**].  
A Firmware update status appears on the Update in Progress screen. The printer control panel also shows the firmware update status. You will see a message similar to “An authorized user is making changes to this device, Please wait....”

**Important:** Do not close the window or interrupt the printer while it upgrades.

2. Once the upgrade is complete, select [**Finish**] within the tool.
3. When Prompted “Would you like to exit?” select [**Yes**].

The printer reboots when the upgrade is completed, and a Software Upgrade Report prints.