

**Xerox FreeFlow Accxes  
System & Web Printer  
Management Tool**

**Setup  
Guide**

Xerox Corporation  
Global Knowledge and Language Services  
800 Phillips Road, Bldg. 218-01A  
Webster, NY 14580  
USA

© 2008 by Xerox Corporation. All rights reserved.

Copyright protection claimed includes all forms and matters of copyrightable material and information now allowed by statutory judicial law or hereinafter granted, including without limitation, material generated from the software programs which are displayed on the screen such as icons, screen displays, looks, etc.

Printed in the United States of America.

XEROX and all Xerox product names mentioned in this publication are trademarks of XEROX CORPORATION. Other company trademarks are also acknowledged, including: Microsoft, MS-DOS, Windows, Microsoft Network, and Windows Server are either trademarks or registered trademarks of Microsoft Corporation in the United States and/or other countries. Adobe, Acrobat, PostScript, PostScript3, and PostScript Logo are trademarks of Adobe Systems Inc. HP, HPGL, HPGL/2, and HP-UX are registered trademarks of Hewlett-Packard Corporation. All product/brand names are trademarks or registered trademarks of the respective holders.

Disclaimer: While every care has been taken to accurately portray User Interface screens, late changes to the machine may result in differences between the screens shown in the User Guide and what appears on the actual machine.

---


**Damage related to computer viruses:**

Xerox is not responsible for any machine breakdown or software malfunction caused by a computer virus.

**Important**

- (1) This manual is copyrighted with all rights reserved. Under the copyright laws, this manual may not be copied or modified, in whole or in part, without the written consent of the publisher.
- (2) Changes are periodically made to this document. Changes, technical inaccuracies, and typographic errors will be corrected in subsequent editions.
- (3) We welcome any comments on ambiguities, errors, or omissions.
- (4) Never attempt any procedure on the machine that is not specifically described in this manual. Unauthorized operation procedures can cause problems or accidents. Xerox is not liable for any problems resulting from unauthorized operation of the equipment.

Xerox, The Document Company and Ethernet are registered trademarks.



---

# Table of Contents

---

## **Introduction** **1-1**

---

System Requirements . . . . .	1-2
Web Printer Management Tool Overview . . . . .	1-3

## **Getting Started with the Web Printer Management Tool** **2-1**

---

Check Proxy Connections . . . . .	2-2
Internet Explorer . . . . .	2-2
Firefox . . . . .	2-2
Configure your Network Connections . . . . .	2-3
Starting the Web Printer Management Tool . . . . .	2-5
Viewing the Print Queue page . . . . .	2-5
Setting TCP/IP Address Parameters from the Printer . . . . .	2-6
For the 510, 8825, 8830 and 8850 Printers only. . . . .	2-6
Enable DHCP or RARP/BOOTP . . . . .	2-6
For the 510, 8825, 8830 and 8850 Printers only. . . . .	2-6
Security . . . . .	2-7
Changing the System Password: . . . . .	2-7
File Transfer Protocol Scan Destinations . . . . .	2-8
Disk Image Overwrite . . . . .	2-9

## **Configuration & Settings Test Print** **3-1**

---

Printing a Test Print . . . . .	3-2
From the Web Printer Management Tool: . . . . .	3-2
From the 6279 Printer: . . . . .	3-2
From the 6204 Printer: . . . . .	3-2
From the Printer 510, 8825, 8830, 8850 Printers: . . . . .	3-2
Configuration Test Print Sample . . . . .	3-3
Configuration Test Print Details . . . . .	3-4
Controller Configuration . . . . .	3-4
Optional Controller Features . . . . .	3-5
Xerox Wide Format Scan System Features: . . . . .	3-5
Xerox Wide Format Printers and Scan Systems: . . . . .	3-5
Xerox Wide Format Print Systems: . . . . .	3-5
Xerox Wide Format 510 Print Systems: . . . . .	3-6
Xerox Wide Format 6030/6050 Print Systems: . . . . .	3-6

---

Print Engine Configuration . . . . .	3-7
Installed Media . . . . .	3-7
Communication Parameters . . . . .	3-7
Synergix Scanner Configuration . . . . .	3-7
6279 Wide Format . . . . .	3-7
Settings Test Print Sample . . . . .	3-8

**Printer Setup** **4-1**

---

Configuration Settings . . . . .	4-1
Emulation Settings . . . . .	4-2
Configuring System Defaults . . . . .	4-3
Utility Settings . . . . .	4-4

**Driver and Client Software Installation** **5-1**

---

Client Tools Overview . . . . .	5-1
Account Management Tool Overview . . . . .	5-1
Drivers . . . . .	5-1

---

# 1. Introduction

The purpose of this guide is to provide experienced System Administrators with the required information for setting up a Xerox Wide Format Printer within a variety of network environments.

FreeFlow Accxes Version 13.0 supports the following printers:

- 510 series
- 721P
- 6030
- 6050
- 6050A
- 6204
- 8825
- 8830
- 8850
- 6279
- Version 13.0 supports the YKE/YKE-N/FRX/LVX controllers.

Although not all tasks are required for setup within every network environment, the list of typical communications setup tasks include:

- Installing the print drivers
- Setting up the remote printer, including changing the password and setting the printer defaults in the Web Printer Management Tool
- Printing a printer configuration test print
- Installing the Accxes Client Tools (ACT) on user workstations, which enables users to send print jobs that can override the default printer settings.
- Installing the Account Management Tool (AMT) on one workstation, from which media usage data and scanner usage data can be retrieved from the printer's controller.

## System Requirements

---

There are several important system requirements for setting up network printing.

They are:

- A working knowledge of your network operating environment. (Preferably a System Administrator).
- A workstation with the appropriate operating system software installed.
- The proper TCP/IP protocol settings configured for network connectivity.
- Network cabling that is compliant with Ethernet specifications for the environment in which the printer is being installed.

**For Small Networks** - consisting of several network-connected devices/workstations and a single hub. It is necessary to set up the printer with an individual IP Address and a Subnet Mask. The subnet mask must match with all the other local area network-connected workstations being used as well. Unless a router (gateway) is being used to gain access to the larger wide area network, a Default Gateway address is not needed.

**For Larger Networks** - consisting of many network-connected devices/workstations, with multiple hubs and routers. It is mandatory to set up the printer with an individual IP Address and Subnet Mask. The subnet mask must match the subnet that the printer is on. The Gateway address is the router address that the printer will use to gain access to the larger, wide area network.

---

## Web Printer Management Tool Overview

---

As part of the FreeFlow Accxes firmware, the Web Printer Management Tool is accessed from your workstation using any of the following web browser software:

- Internet Explorer 6.0/7.0
- Mozilla Firefox 2/3
- Safari

Naturally, later versions of the above software releases are applicable as well.

The instructions provided are specifically written for the most commonly used Windows Internet Explorer browser and will differ if you are using another browser type software. It is assumed that System Administrators have a basic knowledge for their browser software of choice.

The Web Printer Management Tool enables three major functions:

- Provides print job management and tracking job status.
- Provides remote control over the printer's default settings.
- Provides a method of enabling job accounting for printed, copied and scanned jobs. An administrator can track media usage data and save it to the FreeFlow Accxes Controller's job log file. The data is then retrievable via an External Account Server. (i.e. The Account Management Tool (AMT)).





---

## 2. Getting Started with the Web Printer Management Tool

This section of the FreeFlow Accxes document will provide you with the detailed instructions on how to use Web Printer Management Tool with your Controller.

At install, the Service Representative configures machine settings and outputs a Test Print page with the final configuration information. This Test Print page becomes very useful for knowing the printer's software and features configured and customized for the environment using your Xerox Wide Format products. It can be found in the same location as the Service Log. Once you have changed the default setting to your liking, reprint the Test Page to keep current details for future references. One of the most important and often required piece of data you'll need, is the IP Address of the printer.

Another option to obtain the Test Print is knowing that when the printer is turned on at the printer, a test print is automatically sent from the controller with the IP address.



**NOTE:** *The IP Address mentioned above, is needed several times in this instruction guide. Keep the Test Print page handy as you proceed.*

### Prerequisites to Accessing Web Printer Management Tool :

- Check and change your browser settings, so that it does not try to access the FreeFlow Accxes Controller through a proxy server.
- Configure your Network Connections
- Configure a Remote Printer Page (6030/6050 only)

Use the following processes and verify these settings and configurations are correct prior to accessing the Web Printer Management Tool.

## Check Proxy Connections

---

### Internet Explorer

---

To deselect a Proxy connection in Internet Explorer, perform the following steps:



1. In the **Web browser**, select [**Tools>Internet Options**].
2. Click on the [**Connections**] tab then the [**LAN Settings**] button.
3. In the **Proxy server** section, deselect the [**Use a proxy server for your LAN**] check box.
4. Click the [**OK**] button.

### Firefox

---

To deselect a Proxy connection in Firefox, perform the following steps:



1. In the **Web browser**, select [**Tools>Internet Options**]
2. Select [**Advanced**]
3. Select the [**Network**] tab
4. Select the [**Settings**] button
5. Select [**No Proxy**]
6. Click [**OK**] twice to finish.

## Configure your Network Connections

**TCP/IP** Prior to being able to communicate with your FreeFlow Accxes scanner and printer, the FreeFlow Accxes controller needs to be configured to the network. These are the TCP/IP communication parameters we are interested in:

- **IP Address**
- **Subnet Mask**
- **Gateway Address**

Have your Configuration Test Print, with the TCP/IP configurations, handy to proceed.

Now check that the TCP/IP settings are correct for you system.

On the Web Printer Management Tool:

Select [**Configuration>Network**]

The screenshot shows the 'FreeFlow Accxes' web interface. The 'Configuration' tab is selected, and the 'Network' sub-tab is active. The 'IPv4' section contains the following fields:

- RARP/BOOTP enable
- DHCP enable
- Host Name: [ ]
- Current Connection: 100 Mbps - Full Duplex
- Speed/Duplex: Auto (dropdown)
- NetMask: 255 . 255 . 255 . 0
- Ethernet TCP/IP Address: 13 . 141 . 54 . 65
- Ethernet TCP/IP Gateway: 13 . 141 . 54 . 1

The 'IPv6' section shows: Scope/Link: FE80::218:8BFF:FE18:C910/64. An 'Update Printer' button is located below the IPv4 fields. A note at the bottom states: 'Please Note: Incorrect specification of the TCP/IP parameters can result in the Web Printer Management Tool losing all communication with the printer. In any event, you will need to update the browser URL after the changes are submitted.'

On the 510, 8825, 8830 and 8850 Printer User Interface:

Select [**Setup IO Ports>Ethernet TCP/IP**]

On the 6204 Printer User Interface:

Select [**Menu>Setup>Network Settings>TCP/IP**]

On the 6050A Printer User Interface:

Select [**Menu>System Settings>TCP/IP**]



**NOTE:** On the 6050A, use the up and down arrows to navigate the current settings, the left arrow to go up a level and the right arrow to go down. The settings to check are: IP address, Network, Gateway and DHCP.

### Speed/Duplex



**KEY POINT:** If the printer has not properly “auto negotiated” with the network, then set the Speed/Duplex to something other than “Auto”. The [**Auto**] setting will properly auto negotiate with a YKE/YKE-N/FRX/LVX 1000 Mbps switch.



**NOTE:** Select *online Help* to access further information as needed.

## Starting the Web Printer Management Tool

### Perform the following steps at your workstation:

1. Launch your **Web browser**. If your browser starts up in Mail or News mode, go to the browser mode.
2. In the browser **URL** box, enter the **http://** followed by your printer's IP address (http://13.152.45.46)
3. Hit the **<Enter>** key and the application will open to the following tabs.

## Viewing the Print Queue page

FreeFlow Accxes

Active User Setup: 0  
Session Owner: 13.141.51.58

Printer Queue Configuration Emulation System Defaults Utilities Applications Session Setup Help

Job Queue Mismatch Queue Active Queue TotalAccxes Queue

Job Name	Media Sheets	Status	Size	Owner	Printer-ID	Copies	Preview
Preview Job	1	Completed	1174k	TotalAccxes	myIPF700-304	Unavailable	
Preview Job	1	Completed	1127k	TotalAccxes	my7142-303	Unavailable	
Preview Job	1	Completed	1081k	TotalAccxes	my7142-302	Unavailable	
Preview Job	1	Completed	1083k	TotalAccxes	my7142-301	Unavailable	
Preview Job	1	Completed	1182k	TotalAccxes	my7142-300	Unavailable	
Preview Job	1	Completed	1087k	TotalAccxes	myIPF700-299	Unavailable	
Preview Job	1	Canceled	1123k	TotalAccxes	my7142-298	Unavailable	

Submit Clear All

**XEROX**  
©2008 XEROX CORPORATION. All rights reserved.

### Job queue

This is the main display which shows active and inactive jobs. There can be up to 128 jobs in the printer pool queue.

### Mismatch queue

This tab displays only jobs with media mismatch issues and will report the necessary action on the page. It will provide the media types for each roll and the remaining amount. You can cancel any of or all mismatch jobs simultaneously. To enable the media mismatch go to [**System Defaults>Media**]

### **Active queue page**

Shows only the jobs in progress, allowing you to cancel or change priority on any or all jobs simultaneously.

### **TotalAccxes Queue**

The Total Accxes Queue option allows users to monitor the activity of remote printers enabled by the Total Accxes feature. By defining a scan destination as a Total Accxes printer, scanned images can be sent directly to that printer or can be held in the Total Accxes queue for preview purposes. Once previewed, the scanned image's copy count can be modified and then released for printing to the Total Accxes printer or deleted. In addition, active or completed Total Accxes jobs are listed here. The [Clear All] button provides a method to cancel and clear the entire Total Accxes queue with one operation.

Users may then select a FTP or remote printer destination at the printer using the Scan to Network feature on their user interface.

---

## Setting TCP/IP Address Parameters from the Printer Control Panel

---

### For the 510, 8825, 8830 and 8850 Printers only.

Perform the following steps to access the **ETHERNET TCP/IP** menu:



1. At the Printer Control Panel, when the display shows **IDLE**, press [**ONLINE**].
2. When the display shows **PAUSED**, press [**ENTER**]
3. When the display shows **UTILITIES**, press [**NEXT**]
4. When the display shows **SETUP I/O PORTS**, press [**ENTER**]
5. When the display shows **ETHERNET TCP/IP**, press [**ENTER**].

### Enable DHCP or RARP/BOOTP

### For the 510, 8825, 8830 and 8850 Printers only.

Once you have accessed the **ETHERNET TCP/IP** menu, perform the following steps to enable **DHCP** or **RARP/BOOTP**:



1. Press the <**NEXT**> key until **DHCP ENABLE=OFF** or **RARP/BOOTP ENABLE=OFF** is displayed.
2. Press the <**ENTER**> key followed by the <**NEXT**> key to change the setting to ON, then press the <**ENTER**> key.

**NOTE:** *Verify that you have DHCP enabled.*



3. Press the <**EXIT**> key as many times as required to go back to **PAUSED** mode.
4. Press the <**ONLINE**> key to put the printer back on line. The display will show **IDLE**.
5. Wait 60 seconds and cycle the printer power. The printer will reflect the new **TCP/IP** address after booting up.
6. Print a **CONFIGURATION & SETTINGS TEST PRINT** and save it for future reference.

## Security

By default, any user can view and change the Web Printer Management Tool pages. To prevent unwanted access to the system settings, the default password needs to be changed. Follow the steps below to change the default password from the number 0.

### Changing the System Password:



In the Web Printer Management Tool:

1. Click on [Utilities>Password].



2. Enter the current printer password in the designated field. (a number in the range 0 to 99999)
3. Enter the new printer password and then again to verify
4. Press the [Update Printer] button.
5. Setting to zero is for Universal Access.



**NOTE:** If the entered password matches the correct system password, you have write-access to the printer settings. The FreeFlow Controller will send back a message stating either “Password verification passed” or “Password verification failed”. This access will only remain open for several minutes and then time out.



## File Transfer Protocol Scan Destinations

For any given destination, if the user chooses a “Scan-to-Net” mode of FTP, he or she will be allowed to configure up to 16 File Transfer Protocol (FTP) destinations for scanned images in the Web Printer Management Tool.



**NOTE:** This feature requires a Scanner and a Scan-to-Net license.

Once a scan destination has been configured, Wide Format Scan System users can choose a destination via the <Sample> key on the Synergix Scanner Control Panel.

The scanned image will be sent to the selected FTP destination. There will no longer be that file remaining on the controller’s hard disk.



1. Select [**Configuration>Scanner**].

The screenshot shows the FreeFlow Accxes web interface. The top navigation bar includes 'Printer Queue', 'Configuration', 'Emulation', 'System Defaults', 'Utilities', 'Applications', 'Session Setup', and 'Help'. The 'Configuration' tab is selected and highlighted with a red box. Below it, a sub-menu includes 'Details', 'Miscellaneous', 'Features', 'Network', 'Printer', 'Accounting', 'Security', and 'Scanner'. The 'Scanner' sub-tab is also highlighted with a red box. The main content area shows the 'Scanner' configuration page with the following fields:

- Scan Destination: 1 (dropdown)
- Mode: TotalAccxes (dropdown)
- Allow local file:
- Configuration**
  - Print Driver: Xerox 7142 Wide Format Printer (dropdown)
  - Printer Name: 7142
  - Printer Nickname: 7142
  - Printer Location: Lab 131S B139
  - IP Address: 13.141.54.106
  - Auto preview:  On  Off
  - Connection: LPD (dropdown)
  - Remote Queue Name: MLP1
- Default Document Print Options**
  - Job Name: Remote Print 7142
  - Media: 11x17 (dropdown)
  - Copies: 1 (dropdown)
  - Gamma: 1.7 (dropdown)
  - Document Type:  Halftone Screen  Contone

Buttons for 'Update Printer' and 'Test Print' are located at the bottom of the configuration area. The XEROX logo and copyright notice are visible at the bottom of the page.

2. Select the Help file for more information about configuring FTP Scan Destinations.



**NOTE:** Scanner is not a choice if the Scan to Net key is not installed. You will be unable to perform the FTP functions.

## Disk Image Overwrite

This security feature provides for 3-pass overwrites and 1-pass verification of all image data temporarily stored on the Accxes hard drive.

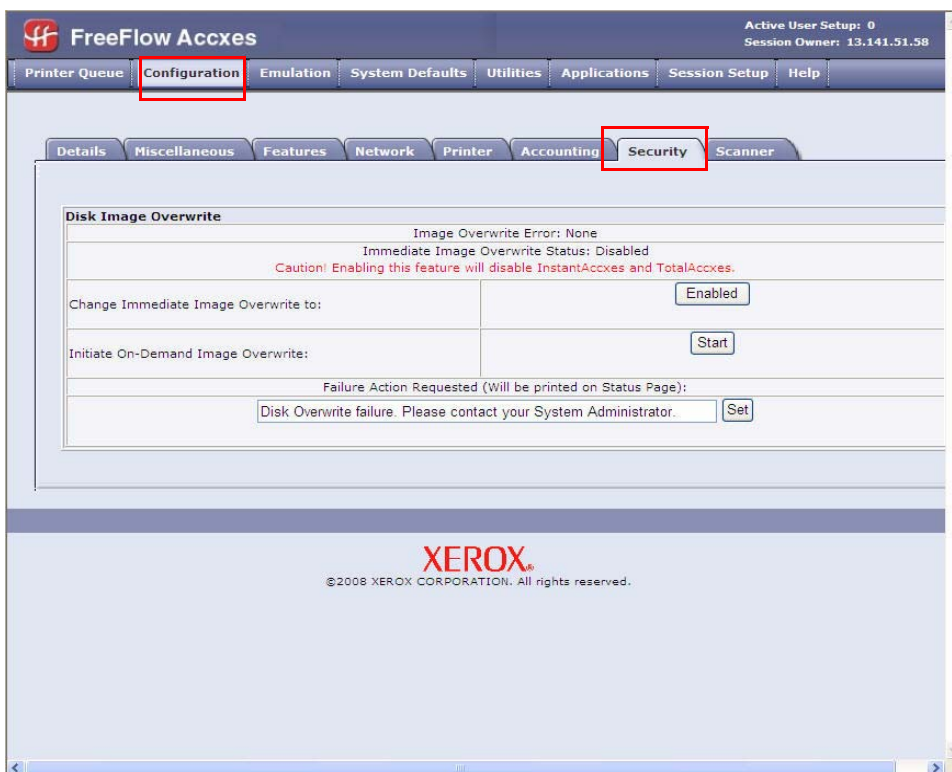
The feature has two modes:

- Immediate Image Overwrite (IIO)
- On-Demand Image Overwrite (ODIO)



In the Web Printer Management Tool:

1. Select [**Configuration**>**Security**].



2. Change **Immediate Image Overwrite** if desired. Selecting [**Enabled**] will prevent remote printing and instant access and total accxes.

**NOTE:** Select the *HELP* file for more information.

---

## 3. Configuration & Settings Test Print

The first task with ALL network environment setups is the printing of **Configuration Test Print and the Settings Test Print**. You can print them using the Web Printer Management Tool or the Printer Control Panel.

The purpose of doing this is to provide a record of current system settings for the use of daily operations, network communications setup and restoration of desired parameters in cases of unexpected change (such as through the accidental use of the Restore Factory Default Utility).



**KEY POINT:** Test print sets should be saved when:

- The initial install is complete and default settings are defined
- Anytime default settings are changed

The reference set of test print pages should be stored with the machine service log.

## Printing a Test Print

---

### From the Web Printer Management Tool:

---



1. Select [**Utilities>Test Print**].
2. Select [**Normal Test**] to get both a Configuration and Settings Test Print.

### From the 6279 Printer:

---



1. Select [**Printer Information>Print Reports**] from the User Interface Touch Screen. OR [**Machine Status>Print Reports**] using the Control Panel button.

### From the 6204 Printer:

---

1. Select [**Machine Status>Configuration Prints**] using the Control Panel button.

### From the Printer Control Panel of 510, 8825, 8830, 8850 Printers:

---

#### CONFIGURATION Test Print



1. When the Printer is **NOT** printing, press the <**Online**> key. (**Paused** will display).
2. Press the <**Enter**> key. (The **Utilities** menu will display).
3. Press the <**Enter**> key again. (**ALL** will display).
4. Press the <**Next**> key as many as times as required to choose the [**Printer Configuration Test Print**].
5. Press the <**Enter**> key again to enable the selected **Test Print**. (The display menu will return to **Utilities**).
6. Press the <**Exit**> key twice. (The display will return to **Paused**).
7. Press the <**Online**> key to put the Printer back on line and print out your Test Print.

#### SETTINGS Test Print

Repeat Steps 1-4 above.

Step 5: Select PRINTER SETTINGS Test Print.

Repeat Steps 6-8 above.



**NOTE:** For the 721P printer only, the test print is generated when the power is switched on.

## Configuration Test Print Sample

An explanation of the main features follows this sample:

```

XEROX 6279 WIDE FORMAT - CONFIGURATION

CONTROLLER CONFIGURATION
DATE/TIME: 03/19/2008 10:39:53 ADVANCED NETWORK STATUS: READY
RAM (MB): 1024 ADVANCED NETWORK HW ADDRESS: 00:13:72:11:3e:fe
CPU: Intel(R) Celeron(R) 2.66GHz KEY INSTALL KEY (KIK): 65c-09-0f1-39b-ca-e68
BSP VERSION: 2.6.22.9-61.fc6 MACHINE NAME: 00-19-72-11-3E-FE
FIRMWARE: 13.0 ERROR LOG:
BUILD NUMBER: 006 (1265637583,00000000)
DDS ENABLE: ON
HARD DISK DRIVE (MB): 76293
STORE DEBUG ON DISK: ON
POSTSCRIPT PARTITION: OPTIMIZED
IMMEDIATE IMAGE OVERWRITE: DISABLED

OPTIONAL CONTROLLER FEATURES
QS ENABLEMENT: PRESENT JOB ACCOUNTING LICENSE: PRESENT
PRINT ACTIVATION: PRESENT JOB ACCOUNTING ENABLE: OFF
PRINT ENABLE: ON COPY ACTIVATION: PRESENT
CBM LICENSE: STANDARD COPY ENABLE: ON
POSTSCRIPT LICENSE: NOT PRESENT SCAN TO NET LICENSE: PRESENT
POSTSCRIPT ENABLE: ON SCAN TO NET ENABLE: ON
VERSATEC RASTER LICENSE: STANDARD SCAN TO PRINT LICENSE: PRESENT
VGL LICENSE: STANDARD SCAN TO PRINT ENABLE: ON
AUTOCAD LICENSE: PRESENT
OTHER CAD LICENSE: PRESENT
RASTER LICENSE: PRESENT
DISK OVERWRITE LICENSE: PRESENT

PRINT ENGINE CONFIGURATION
FIRMWARE: 00.02.04 READY TO POWER SAYER (MIN): 15
IOT HARDWARE ADDRESS: 00:02:00:00:4E:25 POWER SAYER TO REST (MIN): 55
SO LICENSE: STANDARD MEDIA USAGE
FINISHER: NONE LINEAR: 272
MACHINE ID (SERIAL NUMBER): 020005 AREA: 635
RESOLUTION (DPI): 600 ERROR LOG:

INSTALLED MEDIA
ROLL 1 SIZE: ROLL 36 IN ROLL 3 SIZE: ROLL 12 IN
ROLL 1 TYPE: BOND ROLL 3 TYPE: BOND
ROLL 1 STATUS: FULL ROLL 3 STATUS: FULL
ROLL 2 SIZE: ROLL 36 IN ROLL 4 SIZE: ROLL 17 IN
ROLL 2 TYPE: BOND ROLL 4 TYPE: BOND
ROLL 2 STATUS: FULL ROLL 4 STATUS: FULL

COMMUNICATION PARAMETERS
TCP/IP IP ADDRESS: 13.141.54.157
TCP/IP SUBNET MASK: 255.255.255.0
TCP/IP DEFAULT GATEWAY: 13.141.54.1
RARP/BOOTP ENABLE: OFF
DHCP ENABLE: ON

SCANNER CONFIGURATION
TYPE: 6279 VENDOR: Xerox
PRODUCT: 3.1 SCANNER USAGE (SQ FT): 30
FIRMWARE: 0.4.4-0
COLOR LICENSE: PRESENT

```

## Configuration Test Print Details

---

The key information in the sections of the above test print are listed below.

### Controller Configuration

---

**Digital Document System (DDS) Enable** - When DDS is enabled, the Accxes controller will configure itself for use with a scanner. The YKE/YKE-N/FRX/LVX controller has DDS automatically enabled.



**NOTE:** For the other controllers, this must be enabled in order for the controller to communicate with the Scan System.

**Immediate Image Overwrite (IIO)**- Provides for immediate deletion and verification of image data no longer needed by FreeFlow Accxes. It has minimal impact on print and copy times because only areas of the disk that have been written are deleted and verified.



**NOTE:** Enabling IIO doesn't provide security for previously processed images. For full deletion and verification, On-Demand Image Overwrite is recommended in conjunction with enabling IIO.

**Advanced Network Status:** The Advanced Network HW Address is the embedded NIC card.

Status of the 10/100/1000 Ethernet Card/Port:

- **READY** shows that this is the printer's currently active TCP/IP network interface.
- **DISABLED** shows that the port is not enabled. Disabled indicates a problem and a service call is required.

**Advanced Network HW Address:** used to redeem keys.

**Key Install Key (KIK)** - Is important when adding features. When downloading multiple Feature Keys, download all the keys before rebooting the Accxes System. This allows you to download all the keys that use the same KIK number. If you reboot, a new KIK number will be created and you will have to obtain the new KIK number.

**RAM:** The amount of RAM memory.

**BSP Version:** The version of Linux Kernel.

**Firmware:** The version of Accxes, 13.0+

## Optional Controller Features

This section lists the standard features, and those which require a feature key license to activate. The following is a list of the optional feature keys.

### Xerox Wide Format Scan System Features:

**Scan-to-Net Feature Key** - to create an electronic file from a scanned image.

**Scan-to-Print Feature Key** - to scan, create a preview and send the scanned image to the printer when the Scan-to-Net feature is present.

### Xerox Wide Format Printers and Scan Systems:

**Job Accounting Feature Key** - Job accounting enables the tracking of media usage data. The Account Management Tool (AMT), or some other external accounting tool, is used to assign a User ID, Account ID and Print ID. It then collects and tallies the stored data from the printers.

**PostScript Feature Key** - This enables the interpretation of Adobe Post Script 3, PDF up to 1.6.

**Disk Image Overwrite Feature Key** - This enables the security options for overwriting image data on the hard drive.

**OS Enablement Feature Key** - Enables the YKE/YKE-N/FRX/LVX controller to print, copy and scan.

**AutoCAD** - Supports the DWF file format generated by Autodesk applications.

**OtherCAD** - Supports the DGN file format.

**RASTER** - Supports the PGN, GIF, JPEG 2000 and BMP file formats.

### Xerox Wide Format Print Systems:

**6279 9-D**: 7-D is the default print engine configuration.

**6204 5-D**- Use to enable 5-D size prints per minute (ppm) printing speed. Requires an Advanced Network Hardware Address and a Machine ID.

**6050A 9-D**: 7-D is the default.

### **Xerox Wide Format 510 Print Systems:**

**Drawer 2 Feature Key** - Use to enable usage of the second roll feed drawer for operation.

**Drawer 3 Feature Key** - Use to enable usage of the third roll feed drawer for operation.

**7-D Feature Key** - Use to enable operational speed of 7-D size prints per minute (ppm).

**10-D Feature Key** - Use to enable operational speed of 10-D size prints per minute (ppm).

### **Xerox Wide Format 6030/6050 Print Systems:**

**Printer Server Enablement Feature Key** - Enables print and copy mode for a remote printer.



## **Print Engine Configuration**

---

This section shows the IOT firmware version (e.g. 03.03.06-16), the IOT hardware address, the paper roll drawers that are present, the language, if a finisher is attached or not, resolution (DPI), power saver minutes and media usage.

## **Installed Media**

---

This section lists the size and type of media installed in the printer.

## **Communication Parameters**

---

This section lists the TCP/IP Address, Subnet Mask and Default Gateway.

## **Synergix Scanner Configuration**

---

This section shows the Scan System's hardware (HW) address, the firmware version, if a color license or speed enhancement feature is present, and the scanner usage.

**Color License Feature Key** - allows color scanning when the Scan-to-Net feature is present, (shows in the Scanner Configurations section of the test print).

**Speed Enhancement Turbo II Feature Key** - 4 inches per second (ips) for 36" wide media. (shows in the Scanner Configurations section of the test print).

**Speed Enhancement Turbo III Feature Key** - 7.33 inches per second (ips) for 36" wide media, (shows in the Scanner Configuration section of the test print).

## **6279 Wide Format**

---

**Color Enablement Key** - enables color scanning

**6279 Scanner Speed Key** - enables 6 inches per second (ips) for monochrome and 2 inches per second (ips) for color. Without this added feature the default is 4ips for monochrome and 1ips for color.

**Settings Test Print Sample**

Go to the tables in the Printer Setup, Web Printer Management Tool section of this document to see the navigational paths for system settings and processing defaults listed on the below test print. Then you can select the Web Printer Management Tool Help file for further information.

```

XEROX 6279 WIDE FORMAT - SETTINGS

SYSTEM SETTINGS
ACTIVE PARAMETER SET: 0
APPLETALK NAME: XEROX PRINTER
ERROR PAGE ENABLE: LEVEL1
MISMATCH QUEUING ENABLED: OFF
LANGUAGE: US ENGLISH
DATE FORMAT: IMPERIAL (MM/DD/YYYY)
PORT TIMEOUT (SEC): 5
TONER DENSITY: 3
MAXIMUM PLOT LENGTH (CM): 5000.0
BANNER PAGE ENABLE: OFF
BANNER PAGE POSITION: BEFORE JOB
DIAGNOSTIC PAGE: OFF
SINGLE PAGE JOB: DISABLED
PLOT NESTING PARAMETERS
MODE ENABLE: OFF
EXCLUSIVE ENABLE: OFF
TIMEOUT: 5
MARGIN (MM): 0
MAXIMUM LENGTH (CM): 80.96
CALCOMP PARAMETERS
PALETTE NAME: 0
PALETTE SOURCE: JOB
FORCE PLOT: ON
MANUAL COMMAND: OFF
NEW PLOT COMMAND: OFF
START PLOT COMMAND: ON
TOP FORM COMMAND: ON
EOP SEARCH ADDRESS: BOTH
EOP COMMAND: 2
PAUSE COMMAND: ON
CHECKSUM ENABLE: ON
EOM CHARACTER: 13
# SYNCH CHARACTERS: 2
SYNCH CHARACTER: 22
RESOLUTION: 2032
POSTSCRIPT PARAMETERS
PAPER SIZE: ANSI A
EPS: OFF
USE CIE COLOR: OFF
PDF OPTIMIZE: ON
IGNORE PS COLLATION: OFF
PDF TO PS LEVEL: 3
PDF FLATTENING: 5

HPGL PARAMETERS
HPGL MODE: HPGL2
PALETTE NAME: 0
PALETTE SOURCE: JOB
MERGE CONTROL DEFAULT: OFF
REINITIALIZE AFTER EOF: OFF
HP RTL RESOLUTION: 300
AF TERM: ON
AH TERM: ON
FR TERM: ON
NR TERM: OFF
PS TERM: ON
RP TERM: ON
SP TERM: OFF
PLOT OFF TERM: ON
IGNORE PS: OFF
FORCE ROUND LINE ENDS: OFF
FORCE PP=0: ON

CGM PARAMETERS
PALETTE NAME: 0
PALETTE SOURCE: JOB
PAPER SIZE: ANSI A
FILE CONTROL
CGM BACKGROUND: FILE CONTROL

VERSATEC PARAMETERS
CHARACTER SET: ASCII
DEVICE EMULATION: 8830
DEVICE BYTES PER LINE: 128
DEVICE CHARS PER LINE: 128
DEVICE RESOLUTION: 100

VDS PARAMETERS
PALETTE NAME: 0
PALETTE SOURCE: JOB
CHAR ENCODING: ASCII

TIFF PARAMETERS
TIFF PHOTOMETRY TAG: FILE CONTROL

VCGL PARAMETERS
PALETTE NAME: 0
PALETTE SOURCE: JOB
VCGL COLOR MODE: FILE CONTROL
VCGL RESOLUTION: 400

PROCESSING DEFAULTS
LABEL PARAMETERS
LABEL STRING:
LABEL FONT: OCRB
LABEL X LOCATION: TRAILING
LABEL Y LOCATION: BOTTOM
LABEL ROTATION: 90
LABEL SHADING: 100
LABEL SIZE: 18
BOTTOM MARGIN (MM): 4.97
LEFT MARGIN (MM): 4.97
RIGHT MARGIN (MM): 4.97
TOP MARGIN (MM): 4.97
JUSTIFICATION X (MM): LEFT
JUSTIFICATION Y (MM): BOTTOM
DATA FORMAT: AUTO
DEFAULT JOB PRIORITY: 5
FINISHER OPTIONS: NO FOLD
COPIES: 1

COLLATION ENABLE: OFF
OVER SIZE MARGIN (%): 1
UNDER SIZE MARGIN (%): 2
PAPER SIZE DETECT: PLOT SPECIFIED
MEDIA SOURCE: ANY
MEDIA TYPE: BOND
MIRRORING: OFF
MEDIA SIZE: ANY SHEET
ROTATION (DEG): AUTO
SCALING (%): 100
LINE SCALE MODE: OFF
RASTER STAMP PARAMS:
ID:
X LOCATION (MM): CENTER
Y LOCATION (MM): CENTER
ROTATION: 0
SCALING MODE: RELATIVE
SCALING (%): 100
    
```

---

## 4. Printer Setup

### Configuration Settings

---

In the Web Printer Management Tool, select the following navigational paths to get to the option. Then select HELP to access the help files for more information.

<b>CONFIGURATION SETTINGS TABLE</b>	
<b>OPTIONS</b>	<b>NAVIGATIONAL PATH IN THE WEB PRINTER MANAGEMENT TOOL</b>
Accounting Mode	CONFIGURATION > ACCOUNTING
Active User Setup	CONFIGURATION > MISCELLANEOUS
Date/Time	CONFIGURATION > MISCELLANEOUS
Disk Image Overwrite	CONFIGURATION > SECURITY
Display units (English or metric)	CONFIGURATION > MISCELLANEOUS
Scanner (Scan-to-Net, Scan-to-Printer)	CONFIGURATION > SCANNER
Language	CONFIGURATION > PRINTER
Network	CONFIGURATION > NETWORK
Scanner	CONFIGURATION > SCANNER
Toner Density (not for 6030/6050)	CONFIGURATION > PRINTER
Time-out (for Page Refresh)	CONFIGURATION > MISCELLANEOUS
When using Active User Setup, this text box is used to specify any one of 10 parameter sets to use as the default processing parameters. The default value is set 0. Valid input range is from 0 to 9.	

## Emulation Settings

In the Web Printer Management Tool, select the following navigational paths to get to the option. Then select HELP to access the help files for more information.

<b>EMULATION SETTINGS TABLE</b>	
<b>OPTIONS</b>	<b>NAVIGATIONAL PATH IN THE WEB PRINTER MANAGEMENT TOOL</b>
CalComp	EMULATION > CalComp 906/907
CGM	EMULATION > CGM
FONTS (True Type)	EMULATION > FONTS
HPGL	EMULATION > HPGL
Pen Patterns	EMULATION > PEN PATTERNS
Pen Palettes	EMULATION > PEN PALETTES
Postscript	EMULATION > POSTSCRIPT
TIFF	EMULATION > TIFF
VCGL	EMULATION > VCGL
VDS	EMULATION > VDS

## Configuring System Defaults

In the Web Printer Management Tool, select the following navigational paths to get to the option. Select HELP to access the help files for more information.

<b>CONFIGURATION SYSTEMS DEFAULTS TABLE</b>	
<b>OPTIONS</b>	<b>NAVIGATIONAL PATH IN THE WEB PRINTER MANAGEMENT TOOL</b>
Banner Page	SYSTEMS DEFAULTS > MISCELLANEOUS
Collation	SYSTEMS DEFAULTS > MEDIA
Contrast	SYSTEMS DEFAULTS > RENDERING
Copies	SYSTEMS DEFAULTS > MEDIA
Document Type	SYSTEMS DEFAULTS > RENDERING
Diagnostic Page	SYSTEMS DEFAULTS > MISCELLANEOUS
Error Page	SYSTEMS DEFAULTS > MISCELLANEOUS
Finishing	SYSTEMS DEFAULTS > MISCELLANEOUS
Justification	SYSTEMS DEFAULTS > MARGINS
Labels	SYSTEMS DEFAULTS > PLOT LABELS
Lightness	SYSTEMS DEFAULTS > RENDERING
Line Scale Mode	SYSTEMS DEFAULTS > TRANSFORM
Margins	SYSTEMS DEFAULTS > MARGINS
Maximum Plot Length	SYSTEMS DEFAULTS > MEDIA
Media Size	SYSTEMS DEFAULTS > MEDIA
Media Size Detect Set (use marked area)	SYSTEMS DEFAULTS > MEDIA
Media Source	SYSTEMS DEFAULTS > MEDIA
Media Type	SYSTEMS DEFAULTS > MEDIA
Mismatch Queue Settings	SYSTEMS DEFAULTS > MEDIA
Mirror Image	SYSTEMS DEFAULTS > TRANSFORM
Oversize and Undersize Margins	SYSTEMS DEFAULTS > MEDIA
Plot Labeling	SYSTEMS DEFAULTS > PLOT LABELS
Plot Nesting	SYSTEMS DEFAULTS > COMPOSITION
Print Quality Mode	SYSTEMS DEFAULTS > RENDERING
Raster Image Scale Mode	SYSTEMS DEFAULTS > TRANSFORM
Render Mode	SYSTEMS DEFAULTS > RENDERING
Rotation	SYSTEMS DEFAULTS > TRANSFORM

<b>CONFIGURATION SYSTEMS DEFAULTS TABLE</b>	
Scaling	SYSTEMS DEFAULTS > TRANSFORM
Single Page Job	SYSTEMS DEFAULTS > COMPOSITON
Stamps	SYSTEMS DEFAULTS > STAMPS
Vector Halftone	SYSTEMS DEFAULTS > RENDERING

## Utility Settings

UTILITIES SETTINGS TABLE	
OPTIONS	NAVIGATIONAL PATH IN THE WEB PRINTER MANAGEMENT TOOL
Configure remote printer (for 6030/6050 only)	UTILITIES > CONFIGURE REMOTE PRINTER
Factory Default Settings	UTILITIES > RESET PRINTER DEFAULTS
File Upload	UTILITIES > UPLOAD
Help files (Viewing)	HELP
Password	UTILITIES > PASSWORD
Remote IP Address	UTILITIES > CONFIGURE REMOTE PRINTER
Restart Controller	UTILITIES > SHUTDOWN
Shutdown Controller	UTILITIES > SHUTDOWN
Test Print	UTILITIES > TEST PRINT





---

## 5. Driver and Client Software Installation

### Client Tools Overview

---

#### Overview

The FreeFlow Accxes Client Tools (ACT) application runs on a Windows, Linux, Mac or Solaris workstation. The tools enable a user to send print jobs, to retrieve scanned files over the network, and to save images. Selections made in the Client Tools will temporarily override the default settings of the FreeFlow Accxes support printer and scanner.

#### Installation

For installation instructions, see the FreeFlow Accxes Drivers & Client Software Installation Guide. The ACT and AMT software can be installed at the same time.



### Account Management Tool Overview

---

#### Overview

The FreeFlow Accxes Account Management Tool (AMT) also runs on a Windows, Linux, Mac or Solaris workstation. This application is used to retrieve job accounting data from multiple printers that use FreeFlow Accxes firmware, version 7.0, or greater. This application replaces the Accounting Tab functionality of the FreeFlow Accxes Client Tools.

#### Installation

For installation instructions, see the FreeFlow Accxes Drivers & Client Software Installation Guide. The ACT and AMT software can be installed at the same time.



### Drivers

---

HP-GL/2, AutoCAD and PostScript Drivers are supported by the Accxes controller.

#### Installation

For installation instructions, see the FreeFlow Accxes Drivers & Client Software Installation Guide.



