



Release Notes

English

Xerox CX Print Server, Powered by Creo Color Server Technology, for the Xerox Color 550/560 Printer

Version 1.0

Copyright

Eastman Kodak Company, 2010. All rights reserved.

This document is also distributed in PDF (Portable Document Format). You may reproduce the document from the PDF file for internal use. Copies produced from the PDF file must be reproduced in whole.

Trademarks

Kodak, Creo, InSite, and Prinergy are trademarks of Kodak.

Acrobat, Adobe, Distiller, Illustrator, Photoshop, and PostScript are trademarks of Adobe Systems Incorporated.

Apple, AppleShare, AppleTalk, iMac, ImageWriter, LaserWriter, Mac OS, Power Macintosh, and TrueType are registered trademarks of Apple Inc. Macintosh is a trademark of Apple Inc., registered in the U.S.A. and other countries.

Hexachrome, PANTONE, PANTONE Goe, PANTONE Hexachrome, and PANTONE MATCHING SYSTEM are the property of Pantone, Inc.

PEARL, PEARLdry, PEARLgold, PEARLhdp, and PEARLsetter are registered trademarks of Presstek, Inc.

Xerox and the sphere of connectivity design are trademarks of Xerox Corporation in the United States and/or other countries.

FCC Compliance

Any Creo branded equipment referred to in this document complies with the requirements in part 15 of the FCC Rules for a Class A digital device. Operation of the Creo branded equipment in a residential area may cause unacceptable interference to radio and TV reception, requiring the operator to take whatever steps are necessary to correct the interference.

Product Recycling and Disposal



If you are managing the disposal of your Xerox product, please note that the product contains perchlorate, lead, mercury, and other materials whose disposal may be regulated due to environmental considerations in certain countries or states. The presence of perchlorate, lead and mercury is fully consistent with global regulations applicable at the time that the product was placed on the market.

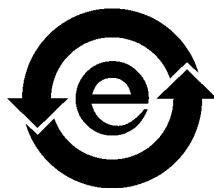
Application of this symbol on your equipment is confirmation that you must dispose of this equipment with agreed national procedures.

In accordance with European legislation, end of life electrical and electronic equipment subject to disposal must be managed within agreed procedures.

For the proper treatment, recovery, and recycling of old products and used batteries, please take them to applicable collection points in accordance with your national legislation and directives 2002/96/EC and 2006/66/EC. By disposing of these products and batteries correctly, you will help save valuable resources and prevent any potential negative effects on human health and the environment that could otherwise arise from inappropriate waste handling. In accordance with national legislation, penalties may be applicable for incorrect disposal of this waste.

Xerox operates a worldwide equipment take back and reuse/recycle program. Contact your Xerox sales representative (1-800-ASK-XEROX) to determine whether this Xerox product is part of the program. For more information about Xerox environmental programs visit <http://www.xerox.com/environment>.

For perchlorate disposal information, contact your local authorities. In the United States, you may also refer to the California Department of Toxic Substances Control (DTSC) or see <http://www.dtsc.ca.gov/hazardouswaste/perchlorate>.



This electronic information product complies with Standard SJ/T 11363 - 2006 of the Electronics Industry of the People's Republic of China.

REACH

Please consult www.kodak.com/go/REACH for information about the presence of substances included on the candidate list according to article 59(1) of Regulation (EC) No. 1907/2006 (REACH).

Limitation of Liability

The product, software or services are being provided on an "as is" and "as available" basis. Except as may be stated specifically in your contract, Kodak and its subsidiaries, and affiliates expressly disclaim all warranties of any kind, whether express or implied, including, but not limited to, any implied warranties of merchantability, fitness for a particular purpose and non-infringement.

You understand and agree that, except as may be stated specifically in your contract, Kodak and its subsidiaries, and affiliates shall not be liable for any direct, indirect, incidental, special, consequential or exemplary damages, including but not limited to, damages for loss of profits, goodwill, use, data or other intangible losses (even if Kodak has been advised of the possibility of such damages), resulting from: (i) the use or the inability to use the product or software; (ii) the cost of procurement of substitute goods and services resulting from any products, goods, data, software, information or services purchased; (iii) unauthorized access to or alteration of your products, software or data; (iv) statements or conduct of any third party; (v) any other matter relating to the product, software, or services.

The text and drawings herein are for illustration and reference only. The specifications on which they are based are subject to change. Kodak may, at any time and without notice, make changes to this document. Kodak, for itself and on behalf of its subsidiaries, and affiliates, assumes no liability for technical or editorial errors or omissions made herein, and shall not be liable for incidental, consequential, indirect, or special damages, including, without limitation, loss of use, loss or alteration of data, delays, or lost profits or savings arising from the use of this document.

www.creoservers.com

Internal 739-00607A-EN Rev A

Revised August 2010

Contents

Introduction	1
What Is in These Release Notes.....	1
Printing This Document.....	1
General	2
Software kit contents.....	2
DVD 1.....	2
DVD 2.....	2
DVD 3.....	2
Power Up.....	3
Installation.....	3
Installing with a Switch.....	3
Installing without a Switch.....	4
Support EIP using Switch (include).....	5
Adobe PDF Print Engine 2.0.....	5
Limitations	7
General.....	7
Native PDF workflow.....	7
Known Problems	8
Using the CX Print Server software	9
General.....	9
Font Substitution is off by default.....	9
Gallop.....	9
Printing.....	9
Admin page.....	9
Resume printing.....	9

Introduction

Welcome to the Xerox CX print server, powered by Creo color server technology, for the Xerox Color 550/560 printer release notes. This document describes general information, limitations, known problems, and tips about the CX print server.

What Is in These Release Notes

The release notes include the following sections:

- *General* lists general information about the CX print server release.
- *Limitations* lists the limitations for this CX print server release.
- *Known Problems* lists known problems for this CX print server release.
- *Using the CX Print Server software* lists tips about using the CX print server software.

Printing This Document

Change the paper size to print this document on any printer.

1. Open the PDF file in Adobe Acrobat.
2. From the **File** menu, select **Print**.
The Print dialog box appears.
3. Select the desired paper size, for example, A4 or letter.
4. In the **Page Scaling** list, select **Fit To Printable Area** or **Shrink To Printable Area**.

Note: The names in the Page Scaling list vary according to the version of the Adobe Acrobat software.

5. Click **OK**.

This document is printed on either A4 or letter size paper.

General

This section lists general information about the CX print server software.

For more information about consumable status, refer to the Xerox Color 550/560 Printer PC-UI for messages—for example, booklet maker full, waste bottle, corotrons, and so on.

For more information about printing mixed documents, see *Printing mixed documents on the CX Print Server for the Xerox Color Printer (734-01102A-EN Rev A)*.

The Imposition Power Kit requires software installation from the DVD. For instructions, see the *Visual Reference Guide*.

Software kit contents

The software kit includes three DVDs (DVD 1, DVD 2, and DVD 3). Each DVD is described below.

DVD 1

DVD 1 includes the Microsoft Windows XP Professional operating system with a customized menu for reinstalling the CX print server. The date of DVD 1 is 12 May, 2010.

DVD 2

DVD 2 includes the CX print server software (setup files, PPD files, printer drivers, and utilities). The CX print server was successfully tested with McAfee VirusScan 8.5 for Windows XP Professional server antivirus software.

DVD 3

DVD 3 includes the utilities, and the customer and service documentation. The DVD has both Macintosh and Windows partitions and can be mounted on both platforms. You can copy the user guide to any client workstation that has a DVD-RW drive and send the guides to any printer for printing.

Power Up

The correct powering up sequence is to first power up the Xerox 550/560 printer, and then power on the CX print server.

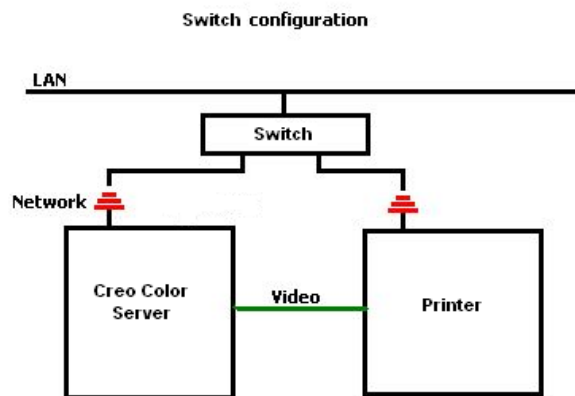
Installation

You need to connect a monitor, keyboard and mouse or use a remote desktop connection for the initial setup.

Installing with a Switch

The recommended configuration to connect between the Xerox 550/560 printer and the CX print server in order to work with EIP APPLICATIONS is detailed below.

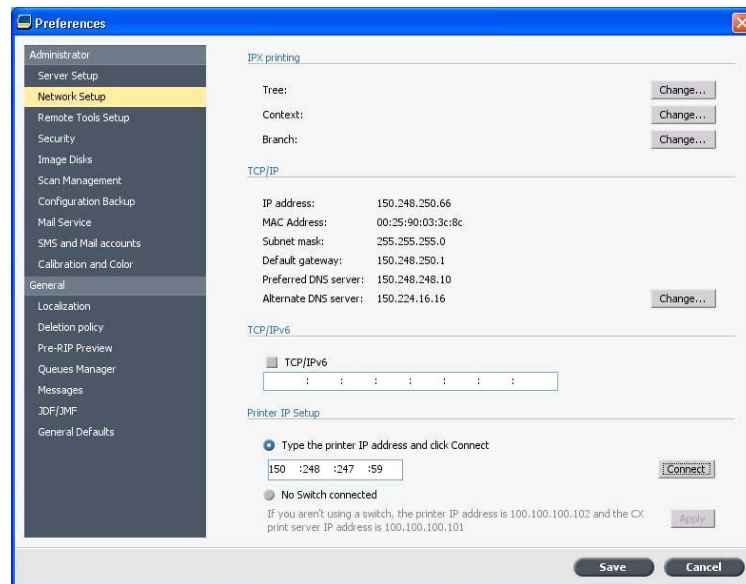
This network configuration allows you to use all EIP capabilities (as the printer is connected directly to the network), and perform off-the-glass calibration and remote scanning with the Creo Color Server.



1. Connect the CX print server to the switch using one regular network cable.
2. Connect the printer to the switch using a regular network cable.

Note: No cross cable required at all!

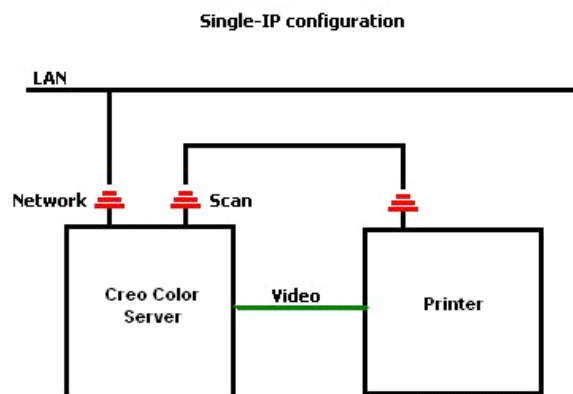
3. Configure the printer to use a dynamic IP address based on DHCP.
4. Check that you can access both the printer and the CX print server using the relevant IP addresses.
5. On the the CX print server, from the **File** menu, select **Preferences**.
6. In the Preferences window, under **Administrator**, select **Network Setup**.



7. Select **Type the printer IP address**, type the printer IP address and click **Connect**.
8. A message appears when the connection is successful.
9. On the printer, in the **Network Scanning** application, press **Update Templates**. Check that the list of templates is refreshed and that there is no indication of an error on the LCD.

Installing without a Switch

It is also possible to use the legacy configuration, that is, no switch, with only the CX print server connected to the network, and the printer connected to the CX print server scan network adapter.



1. Configure the printer to use static IP address (100.100.100.101), subnet 255.255.255.252.
2. On the the CX print server, from the **File** menu, select **Preferences**.

3. In the **Preferences** window, under **Administrator**, select **Network Setup**.
4. Select **No Switch** connected, and click **Apply**.

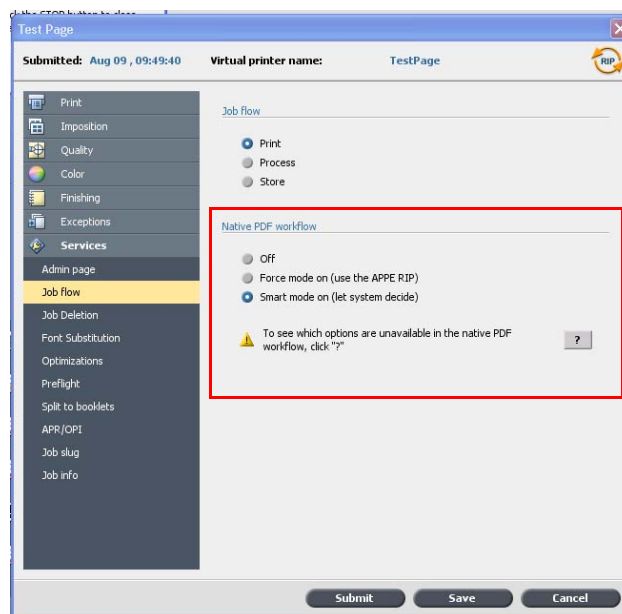
Support EIP using Switch (include)

For additional information, refer to the *Xerox 550/560 System Admin Guide* (701P50980).

Adobe PDF Print Engine 2.0

The CX print server supports the native PDF workflow. This workflow processes PDF files natively using the Adobe PDF Print Engine (APPE). The APPE RIP ensures that complex designs and effects, including transparencies, are reproduced quickly and correctly.

You can apply native PDF workflow options in the job parameters window under **Services > Job flow**.

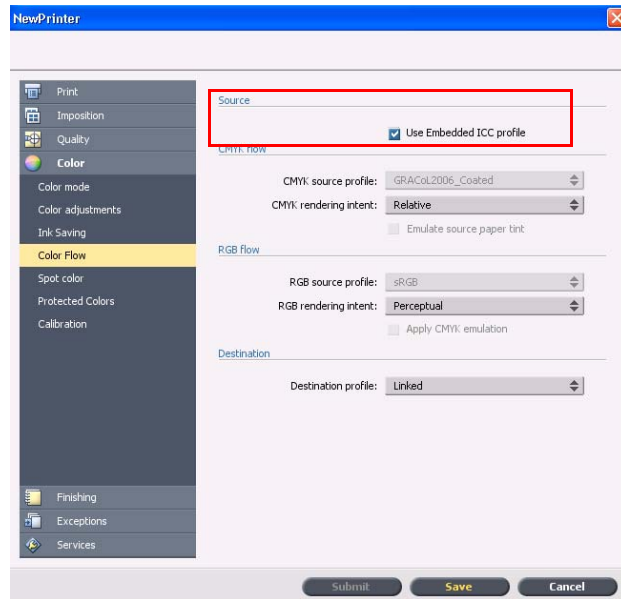


The following options are available:

- **Off**—(default setting) Always uses the CPSI RIP (even for PDF files)
- **Force mode on**—Always uses the APPE RIP for native PDF files. All other file types are processed using the CPSI RIP.
- **Smart mode on**—Enables the Smart Mode algorithm. This algorithm determines whether or not a PDF file requires the native PDF workflow and then applies it accordingly—for example, transparencies and overprint PDF files require the native PDF workflow. Text files without transparencies do not require the native PDF workflow. When a PDF file does not require the native PDF workflow, the CPSI RIP is applied.

In addition, a new check box, **Use Embedded ICC Profile**, is available in the job parameters window. One of the advantages of using the native PDF workflow is that the PDF file includes color management options—for example, embedded source profiles. When you select the **Use Embedded ICC Profile** check box, the CX print server honors the PDF color profiles per object. If some or all of the elements do not include a profile, the default profiles are applied. By default, the source profile and destination profile that is selected in the job parameters window is used with the native PDF workflow.

Note: In some cases, results for CPSI RIP and APPE RIP will not be identical.



Some of the image quality and color options in the job parameters window are not applicable when you are working with the native PDF workflow. You can view the list of these options in the **Native PDF workflow** area.

Limitations

This section lists limitations in the CX print server software.

General

- If you open the online help or one of the tutorials on the CX print server software, and then open the workspace, the online help and tutorials are hidden behind the workspace.
- In the **Color Set** parameter, if you select the **None** option after having selected one of the color set options, the parameter doesn't revert to the default setting.
- If the user disk is full, a message indicating that the job failed in the Process queue appears without an indication that the user disk is full.
- Xerox Xpresso and SNMP proxies for the Xerox Color 550/560 printer are not supported.
- The PPD file does not include the entire list of job parameters. To work with all of the options in the job parameters window, install the Print Driver software.

Native PDF workflow

- The **Run immediately** option can't be used with the native PDF workflow.
- Native PDF workflow options are not available via the Print Driver software.
- Native PDF workflow supports CMYK workflow only.
- In the Native PDF workflow, the following options will not be applied:
 - PDF optimization
 - Graphics Quality High
 - Use protected CMYK values
 - Use protected RGB values
 - Use protected gray values
 - CMYK auto rendering intent (Switch to Relative)
 - RGB auto rendering intent (Switch to Perceptual)
 - Split to booklets
 - Font Substitution

Known Problems

- The Diagnostic window does not open and is stuck on test DLLs.
- On the Mac OS, the number of copies in Acrobat are mapped to the number of pages on the CX print server.
- A file submitted with PS Optimization fails in process.
- Nothing happens when you double-click on the Calibration icon and the Calibration wizard does not open. You must then restart the application in order to open the Calibration wizard.
- Two lines of fold marks on one side of the image are missing.
- Barcode and corner marks are not printed when Duplo DSF-2000 or DC-645 is selected.
- When the CX print server starts up, the test page defaults to tray 1 when the correct paper is loaded in a different tray.
- CX print server does not reestablish a connection after a 127-211 fault. After any printer fault, you must power-off and power-on both the printer and the CX print server.
- If you are reinstalling software and consistently receive an error message after DVD 2, open Disk Management in Windows and check if Disk 1 (Partition) is set to basic or dynamic. If the partition is set to basic, convert it to dynamic.

Using the CX Print Server software

This section provides tips about using the CX print server software.

General

Font Substitution is off by default

To prevent a job failing due to missing fonts, select the **Use Font Substitution** check box in the job parameters window.

Gallop

Gallop enables you to start printing a long job, usually VDP, while the job is still processing. The **Gallop** parameter is usually used for large or complex jobs that take longer to RIP.

Printing

Admin page

If you choose to print an admin page with a Z-fold half sheet job, the admin page prints as a Z-fold half sheet.

Resume printing

Select **Resume printing** if you aborted a job, or received a Xerox Color 550/560 printer fault and the job was canceled. Some situations may require you to resubmit your job to the CX print server.

