

Coupon Exchange



<http://www.xes.com/keys/httpHome/keys.html>

Select a language button.

Table of Contents

Coupon Exchange	1
Table of Contents	1
General Information.....	2
Redeem a Coupon for a Feature Key (With Internet Access and AccXES System Software Versions 8.0 or Greater)	4
Redeem a Coupon for a Feature Key (With Internet Access and AccXES System Software Versions Prior to Version 8.0).....	7
Redeem a Coupon for a Feature Key (Without Internet Access).....	9
Get a Single Replacement Key (AccXES Software Versions 8.0 or Greater).....	10
Get a Single Replacement Key (AccXES Software Versions Prior to Version 8.0)	11
Re-enabling Of Features When The IOT HW (Hardware) and/or Advanced Network HW Address Has Changed	12
Replace All Feature Keys After Software Upgrade	13
Uninstall a Feature Key	14
Moving a Feature Key to another AccXES System (Software Versions 8.0 or Greater)	16
Enabling a Feature Key (Optional Features).....	17

General Information

AccXES Software Version 9.0

With the introduction of AccXES System software version 9.0 the following changes have been introduced:

- Feature Key support for two new printers, the Synergix Print System 510dp and the Synergix Print System 721p.
- New optional Feature Keys, see Table 1. The Drawer Enablement and Speed Enhancements 7D and 10D/Minute features are unique to the Synergix Print System 510dp Printer.

Helpful Hints

When downloading a Feature Key it may be helpful to open two browsers, one for the WebPMT to your AccXES System and one for the XES Coupon Exchange web site. With the two browsers open you may move between the two sites as required until the Feature Key download is complete. Once the download is complete you can maximize the WebPMT and upload the Feature Key files to the Controller.

When downloading multiple Feature Keys, download all the keys before rebooting the AccXES System. This allows you to download all the keys using the same KIK number. If you reboot, a new KIK number will be created and you will have to obtain the new KIK number. Then use the procedure in the section entitled "Get a Single Replacement Key (AccXES Software Versions 8.0 or Greater)" to download the additional keys.

Table 1 lists the available features and the information you will need to download them from the Coupon Redemption web site. Have this information readily available when you log on to the web site.

TABLE 1. Available Features and the Required Download Information

Feature	Advanced Network Hardware Address	Scanner Hardware Address	Machine ID (Printer) Serial Number	Scanner Serial Number	IOT (Printer) Hardware Address
Scan To Net	X		X		
Job Accounting	X		X		
Postscript	X		X		
V8.0 Activation	X		X		
Speed Enhancement Turbo II - AccXES		X		X	
Speed Enhancement Turbo III - AccXES		X		X	
Color Enablement - AccXES		X		X	
Color Enablement - XEScan		X		X	
Scan to Print		X		X	
Versatec Raster Formats	X		X		
VCGL Format	X		X		
CGM Format	X		X		
Speed Enhancement Turbo II - XEScan		X		X	
Speed Enhancement Turbo III - XEScan		X		X	
Speed Enhancement - IOT 7D/Minute			510dp ID		X
Speed Enhancement - IOT 10D/Minute			510dp ID		X
Speed Enhancement Upgrade- IOT 5D to 10D/Minute			510dp ID		X
Drawer Enablement - IOT 2 Drawer			510dp ID		X
Drawer Enablement - IOT 3 Drawer			510dp ID		X
Drawer Enablement Upgrade - IOT 1 to 3 Drawer			510dp ID		X

Before reading further, first look at the Table of Contents of this document to locate which section has the Feature Key Instructions that you need to follow. The section titles correspond to the selections on the <http://www.xes.com/keys/httpHome/keys.html> website, with which you will be interacting.

Redeem a Coupon for a Feature Key (With Internet Access and AccXES System Software Versions 8.0 or Greater)

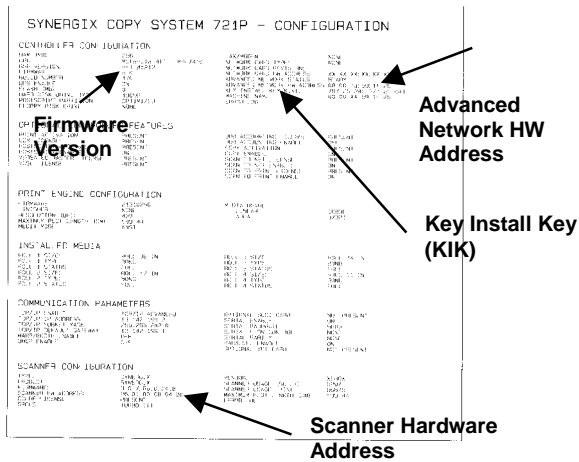


Figure 1. Printer Configuration Test Print

For AccXES Systems firmware versions prior to 8.0, follow all the instructions beginning on Page 7.

1. Locate the 16 character coupon ID on the label of the diskette included in this kit. The coupon ID represents your Proof of Purchase of the Feature for your system and **MUST NOT** be misplaced.
2. Log on to the WebPMT and leave it open. Make a print of the Printer Configuration Test Print, "Minimal" (Figure 1) or access the PRINTER DEFAULTS, UTILITIES, Configuration screen on the WebPMT (Figure 2) and identify the:
 - IOT HW (Hardware) Address, the Scanner HW Address (00:00:AA :xx:xx:xx or 26:01:xx:xx:xx:xx), or Advanced Network HW Address (00:00:aa:xx:xx:xx) where each xx denotes a pair of characters) from Test Print or WebPMT, Printer Defaults.
 - Key Install Key (KIK).
3. Using the Test Print, confirm that the firmware version in your printer is 8.0 or greater. If not, go to the section in this document entitled "Key Redemption With Internet Access and AccXES System Software Versions Prior to Version 8.0."
4. Using your Internet browser, access <http://www.xes.com/keys/httpHome/keys.html>.
5. Select a language (English, French, German, Italian, Spanish, or Portuguese).
6. Click on "Redeem a Coupon for a Feature Key (AccXES v8.0 or later, or XEScan v1.1 or later)" then click "Continue."
7. Enter the following information then click "Continue"
 - Coupon ID (obtained from certificate or disk label in this kit)
 - Feature
 - Key Install Key (KIK)

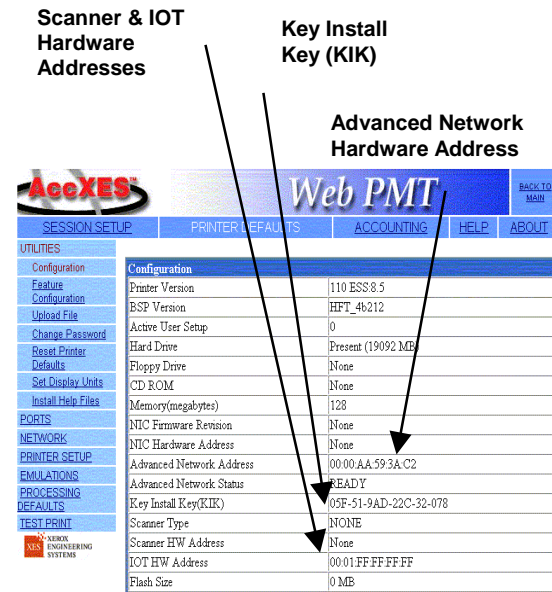


Figure 2 . WebPMT, Configuration Page

Note: Refer to Table 1 to determine which address and serial number is required.

8. Enter the:
 - Plotter (Printer) model.
 - IOT HW (Hardware) HW Address, Scanner HW Address, or Advanced Network HW Address from Test Print (See Figure 1.)
 - Scanner Serial Number (locate on the rear of the Scanner), Machine ID (located on the printer connector panel), or Controller Serial Number (located on the rear of Controller) then click "Continue".
9. Enter the IOT HW (Hardware) Address, Scanner Hardware Address, or Advanced Network HW Address a second time and click "Confirm."
10. Fill in the requested name and addressing information and click "Continue."
11. After submitting the information, verify that all information on the Summary Page is correct. Then click on the "Download Feature Key (file)" button. A "File Download" dialog box will appear, click "Save". A "Save As" window will open. Choose the location (Save In:) to save the file, and change the file name if you desire. Click "Save" to save the file to your hard drive location or to the diskette that came in this kit. Close the "Download Complete" window.

Read the note on the web page regarding using the "Redeem Another Coupon" button.

Note: You may want to rename the file to a meaningful name, but do not change the file extension (.plt, .xky). Changing the file name will not affect the system's ability to read the file.

12. Upload the key file(s) to the Controller using the Web PMT.
 - Open the WebPMT on you workstation. Navigate to PRINTER DEFAULTS > UTILITIES > Upload File. If required, reference the WebPMT User Guide, *Printer Defaults, Upload File* section for more information.
 - Browse to where you saved the Feature Key file in Step 11 and click on the Upload button to upload the file.

Note: The AccXES Client Tools, Document Submit Tool can also be used (Reference the AccXES Client Tools User Guide). Send the key file(s) the same as you would send a print job. The Controller will recognize the file extension and load the key(s).

13. After waiting 60 seconds, reboot your entire system to enable the feature key. Wait for the system to complete the initialization. It will then be ready to accept prints.

Note: *If required, reference the XES Synergix 8825/8830/8850/8855/510dp/721p Digital Solutions User Guide, Powering Off the Digital Solution or the Colorgrafx X2 User Guide, for powering off instructions.*

14. Verify that the Optional License(s) is/are present.
 - a. Print a Printer Configuration Test Print (Minimal), or on the WebPMT click PRINTER DEFAULTS > UTILITIES > CONFIGURATION > Feature Configuration.
 - b. Verify that the feature is enabled:

TEST PRINT (see Figure 1)

- Color license and Speed are located under the SCANNER CONFIGURATION section .
- Check under the OPTIONAL CONTROLLER FEATURES. “Present” should appear opposite each feature license that was installed.

WebPMT (see Figure 6)

- Go to PRINTER DEFAULTS > UTILITIES > Feature Configuration.
- “Present” should appear opposite each feature license that was installed.

15. Place the Test Print, along with a record of your Coupon ID, in the service logbook located in the door panel of your printer.
16. Store the feature key diskette in a safe place, together with your other drivers and firmware diskettes and CD's.
17. Refer to section in this document entitled “Enabling a Feature Key (Optional Feature)” to enable the feature to be used.

Redeem a Coupon for a Feature Key (With Internet Access and AccXES System Software Versions Prior to Version 8.0)

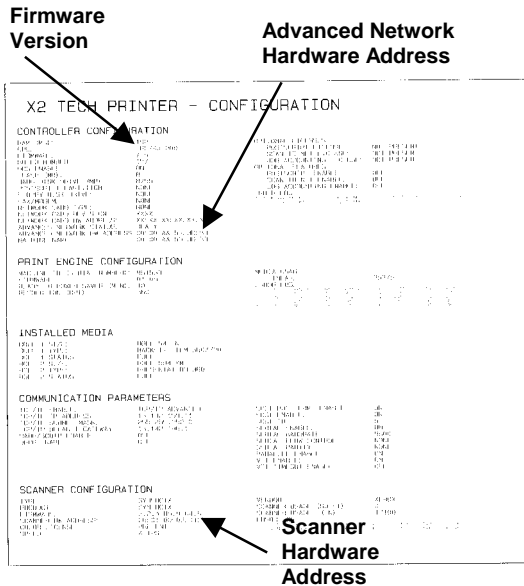


Figure 3. Printer Configuration Test Print

For AccXES Systems firmware versions prior to 8.0, do the following.

1. Locate the 16 character coupon ID on the label of the diskette included in this kit. The coupon ID represents your Proof of Purchase of the Feature for your system and **MUST NOT** be misplaced.
2. Log on to the WebPMT and leave it open. Make a print of the Printer Configuration Test Print, "Minimal" (Figure 3) or access the Printer Defaults screen on the WebPMT (Figure 4) and identify the:
 - Advanced Network HW Address or the Scanner HW Address (00:00:AA:xx:xx:xx or 26:01:xx:xx:xx:xx), where each xx denotes a pair of characters) from Test Print or WebPMT, Printer Defaults.
3. Using the Test Print, confirm that the firmware version in your printer is prior to 8.0. If not, refer to the Controller Setup Manual, "Over The Wire Firmware Upgrading" instructions.
4. Using your Internet browser, access <http://www./keys/httpHome/keys.html>.
5. Select a language (English, French, German, Italian, Spanish, or Portuguese).
6. For releases prior to version 8.0, click on "Redeem a Coupon for a Feature Key (AccXES versions prior to 8.0, or XEScan v1.1)" and click "Continue."
7. Enter the following information and click "Continue"
 - Coupon ID (obtained from certificate or disk label in this kit)
 - Feature

Note: Refer to Table 1 to determine which address and serial number is required.



Figure 4 . WebPMT, Configuration Page

8. Enter the:
 - Plotter model
 - Advanced Network HW (Hardware) Address or Scanner HW Address from the Test Print or WebPMT, Printer Defaults. (See Figures 3 and 4.)
 - Scanner Serial Number (located on the back of the Scanner or Controller Serial Number (located on the rear of Controller) then click "Continue".

9. Enter the Advanced Network HW Address or Scanner Hardware Address a second time and click "Confirm."
10. Fill in the requested name and addressing information and click "Continue."
11. After submitting the information, verify that all information on the Summary Page is correct then click on the "Download Feature Key (file)" button. A "File Download" dialog box will appear, click "Save". A "Save As" window will open. Choose the location (Save In:) to save the file, and change the file name if you desire. Click "Save" to save the file to your hard drive location or to the diskette that came in this kit. Close the "Download Complete" window.

Note: *You may want to rename the file to a meaningful name, but do not change the file extension (.plt, .xky). Changing the file name will not affect the system's ability to read the file.*

12. Upload the key file(s) to the Controller using the Web PMT.
 - Open the WebPMT on your workstation
 - Navigate to PRINTER DEFAULTS > UTILITIES > Upload File.
 - Browse to where you saved the Feature Key file in Step 11 and click on the Upload button to upload the file.

Note: *The AccXES Client Tools, Document Submit Tool can also be used (Reference the [AccXES Client Tools User Guide](#)). Send the key file(s) the same as you would send a print job. The Controller will recognize the file extension and load the key(s).*

13. After waiting 60 seconds, reboot your entire system to enable the feature key. Wait for the system to complete the reboot and is ready to accept prints.

Note: *If required, reference the XES Synergix 8825/8830/8850/8855 Digital Solutions User Guide, Powering Off the Digital Solution or Colorgrafx X2 User Guide, for reboot instructions.*

14. Verify that the Optional License(s) is/are present.
 - a. Print a Printer Configuration Test Print (Minimal) (Figure 3) or on the WebPMT click PRINTER DEFAULTS, UTILITIES, Configuration to open the Configuration screen (Figure 4)
 - b. Verify that the feature is enabled:

TEST PRINT (See Figure 3.)

 - Color license is located under the SCANNER CONFIGURATION.
 - Check under the second column of the CONTROLLER CONFIGURATION for OPTIONAL LICENSES. "Present" should appear opposite the feature license that was installed.

WebPMT (See Figure 4)
Select PRINTER DEFAULTS > UTILITIES > Configuration.
"Present" should appear opposite the feature license that was installed.
15. Place the Test Print, along with a record of your Coupon ID, in the service logbook located in the door panel of your printer.
16. Store the feature key diskette in a safe place, together with your other drivers and software diskettes and CD's.
17. Refer to the section entitled "Enabling a Feature Key (Optional Feature)," at the end of this document, to enable the feature to be used.

Redeem a Coupon for a Feature Key (Without Internet Access)

1. In the United States only, call Customer First at 1 877-XES-DNCS. If you are outside the United States, please contact your support representative for feature key instructions.
2. When you receive a diskette or e-mail containing the appropriate file, follow the "Key Redemption With Internet Access" procedure to enable the purchased feature.

Get a Single Replacement Key (AccXES Software Versions 8.0 or Greater)

If you lose your feature key and need a replacement or have rebooted the AccXES System creating a new KIK number after redeeming a coupon, perform the following steps:

Note: *The steps below assume that your IOT HW (Hardware) Address, the Scanner HW Address, or Advanced Network HW Address has NOT changed (as shown on the Printer Configuration Test Print or in the System Description Applications.)*

With Internet Access...

1. Log on to the WebPMT and make a print of the Printer Configuration Test Print, "Minimal" (Figure 1) or access the PRINTER DEFAULTS > UTILITIES > CONFIGURATION (Figure 5) and identify the:
 - Firmware version is 8.0 or greater. If not, go to the section in this document entitled "Single Key Replacement, AccXES Software Versions Prior to Version 8.0".
 - Key Install Key (KIK).
2. Using your Internet browser, access <http://www.xes.com/keys/httpHome/keys.html>.
3. Select a language (English, French, German, Italian, Spanish, or Portuguese).
4. Click on "Get a single replacement key (AccXES v8.0 or later, or XEScan v1.1 or later)" and click "Continue".
5. Enter the:
 - Coupon ID (obtained from the certificate or disk label in this kit)
 - KIK number then click "Continue".
6. A "File Download" dialog box will appear, click Save. A "Save As" window will open. Choose the location (Save In:) to save the file, and change the file name if you desire. Click Save to save the file to your hard drive location or to the diskette that came in this kit. Close the "Download Complete" window.

Note: *You may want to rename the file to a meaningful name, but do not change the file extension (.plt, .xky). Changing the file name will not affect the system's ability to read the file.*

7. Repeat steps 12 - 16 (see pages 5-6) to complete this procedure.

Without Internet Access....

1. In the United States only, call Customer First at 1 877-XES-DNCS. If you are outside the United States, please contact your support representative for feature key instructions.
2. Repeat steps 12 - 17 (see pages 5-6) to complete this procedure.

Get a Single Replacement Key (AccXES Software Versions Prior to Version 8.0)

If you lose your feature key and need a replacement perform the following steps:

Note: *The steps below assume that your IOT HW (Hardware) Address, the Scanner HW Address or Advanced Network HW Address has NOT changed (as shown on the Printer Configuration Test Print or in the System Description Applications.*

With Internet Access...

1. Log on to the WebPMT and make a print of the Printer Configuration Test Print, "Minimal" (Figure 3) or access the Printer Defaults screen on the WebPMT (Figure 4) and verify that the:
 - Firmware version is prior to 8.0.
2. Using your Internet browser, access <http://www.xes.com/keys/httpHome/keys.html>.
3. Select a language (English, French, German, Italian, Spanish, or Portuguese).
4. Click on "Get a single replacement Key (AccXES versions prior to v8.0 or XEScan version 1.1) and click "Continue."
5. Enter the Coupon ID (obtained from the certificate or disk label in this kit) then click "Continue".
6. A "File Download" dialog box will appear, click Save. A "Save As" window will open. Choose the location (Save In:) to save the file, and change the file name if you desire. Click Save to save the file to your hard drive location or to the diskette that came in this kit. Close the "Download Complete" window.

Note: *You may want to rename the file to a meaningful name, but do not change the file extension (.plt, .xky). Changing the file name will not affect the system's ability to read the file.*

7. Repeat steps 12 - 16 (see pages 5-6) to complete this procedure.

Without Internet Access....

1. In the United States only, call Customer First at 1 877-XES-DNCS. If you are outside the United States, please contact your support representative for feature key instructions.
2. Repeat steps 12 - 17 (see pages 5-6) to complete this procedure.

Re-enabling Of Features When The IOT HW (Hardware) and/or Advanced Network HW Address Has Changed

If your Advanced Network HW Address, as shown on the Printer Configuration Test Print has changed, you must perform the following steps:

1. In the United States only, call Customer First at 1 877-XES-DNCS. If you are outside the United States, please contact your support representative for feature key instructions.
2. Refer to *Redeem a Coupon for a Feature Key (With Internet Access and AccXES System Software Versions 8.0 or Greater)*

Replace All Feature Keys After Software Upgrade

After upgrading the firmware all feature keys may or may not be disabled depending on the configuration of your AccXES System. To enable the keys, you must perform the following steps:

Note: You must have Internet access to replace Feature Keys.

1. Using your Internet browser, access <http://www.xes.com/keys/httpHome/keys.html>, then click the appropriate language button.

2. Click on “Replace all keys after software upgrade” and click “Continue.”

Note: Refer to Table 1 to determine which address and serial number is required.

3. Enter the:

- Scanner HW Address, IOT HW (Hardware) Address, or Key Install Key number from the Test Print or WebPMT, Printer Defaults.
- Click “Continue”.

4. A “File Download” dialog box will appear, clicks Save. A “Save As” window will open. Choose the location (Save In:) to save the file, and change the file name if you desire. Click Save to save the “replacement.plt” file to your hard drive location or to the diskette that came in this kit. Close the “Download Complete” window.

5. Upload the “replacement.plt” to the Controller using the Web PMT.

- Open the WebPMT.
- Navigate to PRINTER DEFAULTS > UTILITIES > Upload File.
- Browse to where you saved the “replacement.plt” file in Step 4 and upload the file.

Note: The AccXES Client Tools, Document Submit Tool can also be used (Reference the [AccXES Client Tools User Guide](#)). Send the key file(s) the same as you would send a print job. The Controller will recognize the file extension and load the key(s)

6. After waiting 60 seconds, reboot your entire system to enable the feature key. Wait for the system to complete the reboot and is ready to accept prints.

Note: If required, reference the [XES Synergix 8825/8830/8850/8855/510dp/721p Digital Solutions User Guide](#), [Powering Off the Digital Solution](#) or the [Colorgrafx X2 User Guide](#), for reboot instructions.

7. Print another Printer Configuration Test Print “Minimal” to verify that the feature(s) is/are enabled. (See Figure 1).

Check under the OPTIONAL CONTROLLER FEATURES section. “Present” should appear opposite each feature license that was installed. The color license is located under the SCANNER CONFIGURATION.

8. Place the Test Print, along with a record of your Coupon ID, in the service logbook located in the door panel of your printer.
9. Store the feature key diskette in a safe place, together with your other drivers and firmware diskettes and CD's.
10. Refer to *Enabling a Feature Key (Optional Feature)* in this document to enable the feature to be used.

Uninstall a Feature Key

To remove Feature Key(s) or move a key to another AccXES System, you must perform the following steps:

Note: *You must have Internet access to uninstall Feature Key(s).*

1. Using your Internet browser, access <http://www.xes.com/keys/httpHome/keys.html>, then click the appropriate language button.

Note: *The "Proceed to re-enable your coupon" button is only used if you have to temporarily discontinue the download after Step 1. To continue the download click this button to resume at Step 2.*

2. Click on "Uninstall a Feature Key (step 1—get download file)" and click "Continue."

Note: *Refer to Table 1 to determine which address and serial number is required.*

3. Enter the following information and then click "Continue".
 - Coupon ID (obtained from certificate or disk label in this kit)
 - Scanner, IOT HW (Hardware), or Advanced Network HW Address from Test Print or WebPMT, Printer Defaults.
 - Scanner Serial Number (located on the rear of the Scanner), Machine ID (located on the connector panel), or Controller Serial Number (located on the rear of Controller).
 - Key Install Key (KIK)
 - Select feature description.
4. Click the "Download Feature Key (file)" button.

5. A “File Download” dialog box will appear, click “Save”. A “Save As” window will open. Choose the location (Save In:) to save the file, and change the file name if you desire. Click “Save” to save the file to your hard drive location or to the diskette that came in this kit. Close the “Download Complete” window.

Multiple features can be downloaded using the same KIK. Repeat Steps 1 through 5 for each Feature to be removed before continuing to Step 6. A new KIK number is created each time the AccXES System is rebooted. If you reboot, the new KIK will have to be used in Step 3.

Note: *You may want to rename the file to a meaningful name, but do not change the file extension (.plt, .xky). Changing the file name will not affect the system’s ability to read the file.*

6. Upload the Uninstall Feature key file to the Controller using the Web PMT.
 - Open the WebPMT on your workstation
 - Navigate to PRINTER DEFAULTS > UTILITIES > Upload File.
 - Browse to where you saved the Feature Key file in Step 5 and click on the Upload button to upload the file.

Note: *The AccXES Client Tools, Document Submit Tool can also be used (Reference the AccXES Client Tools User Guide). Send the key file(s) the same as you would send a print job. The Controller will recognize the file extension and load the key(s).*

7. After waiting 60 seconds, reboot your entire system to disable the feature key. Wait for the system to complete the reboot and automatically print out the FEATURE RECEIPT page.
8. **IMPORTANT:** Locate and write down the Key Uninstall Verification (KUV) on the Feature Receipt for the feature that was uninstalled.

Note: *If required, reference the XES Synergix 8825/8830/8850/8855/510dp/721p Digital Solutions User Guide, Powering Off the Digital Solution or Colorgrafx X2 User Guide, for reboot instructions.*

9. Click the “Proceed to re-enable your coupon” button”
10. Enter the Key Uninstall Verification (KUV) number from the Printer Configuration Test Print and click the “Continue” button.
11. This will re-enable the Feature Coupon to be used again on another AccXES System. (Refer to the next page of this document to move the Feature to another AccXES System.)

Moving a Feature Key to another AccXES System (Software Versions 8.0 or Greater)

To move a Feature from one AccXES System to another, perform the following steps.

NOTE *This procedure cannot be done on AccXES System software versions prior to version 8.0.*

1. On the AccXES System that is to have a Feature removed, perform the "Uninstall a Feature Key" procedure to remove the Feature(s).
2. For each feature(s) that is to be uploaded on the new AccXES System, follow the instructions in the section of this document entitled "Redeem a Coupon for a Feature Key (With Internet Access and AccXES System Software Versions 8.0 or Greater)". You will be using the re-enabled Coupon ID(s).

Enabling a Feature Key (Optional Features)

To enable a Feature perform the following steps.

Note: You must enter a password on the WebPMT Session Setup window to enable the features.

1. Verify that the Optional License(s) is/are present.
 - a. Print a Printer Configuration Test Print (Minimal) (see Figure 5) or on the WebPMT click PRINTER DEFAULTS > UTILITIES > Feature Configuration. (See Figure 6.)
 - b. Verify that the feature is enabled:

TEST PRINT

- Color license is located under the SCANNER CONFIGURATION.
- Check in the OPTIONAL CONTROLLER FEATURES section. "Present" should appear opposite the feature license that was installed.

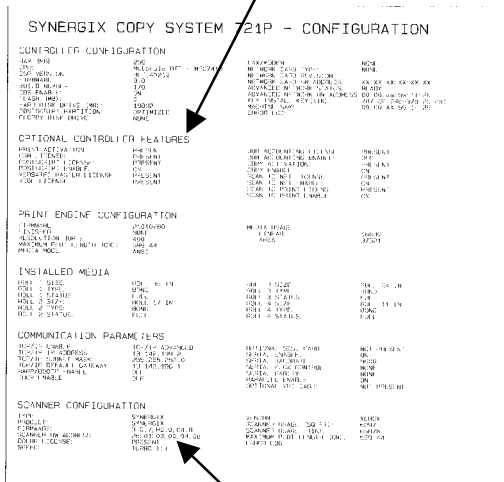
WebPMT

- Select PRINTER DEFAULTS > UTILITIES > CONFIGURATION > Feature Configuration. "Present" should appear opposite the feature license that was installed.

2. Enable the Features using the WebPMT.

- **Accounting Feature:** Click on ACCOUNTING. In the Accounting Mode box, click "Enable". For information on using Accounting, refer to the [AccXES Account Manager Tool Administrator User Guide](#).
- **Copy Enable and Scan To Net Enable:** Click PRINTER DEFAULTS > PRINTER SETUP. "DDS enable" needs to be selected. If not, select it, wait 1 minute, and reboot the entire system.
- Click on UTILITIES > CONFIGURATION > Feature Configuration. Look at the "State" column to verify that the Feature is enabled.

Optional Feature Licenses



COLOR LICENSE

Figure 5. Printer Configuration 9.0 Test Print

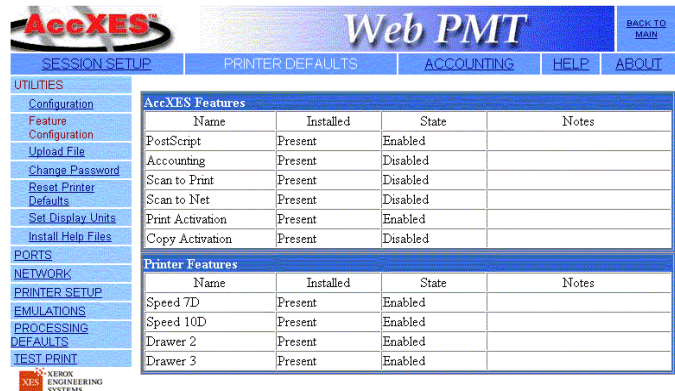


Figure 6. Feature Configuration Page Listing 9.0 Feature Licenses