

Software Version 14.1.2
April 2010



FreeFlow[®] Accxes[®] Printer Drivers Customer Release Notes



Xerox® Corporation 2010. All rights reserved. Xerox®, the sphere of connectivity design, Xerox Wide Format 6279, 6204, 6030, 6050, 6050A, 510, 721, 8825, 8830, 8850, Xerox Wide Format Scan System, FreeFlow® Accxes®, and acronyms, are trademarks of Xerox Corporation in the United States and/or other countries.

Table of Contents

Release Content	1
New or Changed in this Release.....	2
SPARs fixed in this release.....	2
Known Issues	3
ARCH 15 media support is missing in 6622	3
AutoDesk Design Review 2010.....	3
Job Accounting not saved in HP-GL/2 driver.....	3
Windows XP clients and Windows Server 2003 R2 cluster.....	3
Windows Vista and Windows 7 clients and Windows Server 2003 R2 cluster.....	3
Installer Issues.....	3
Additional Drivers are not Installed or Upgraded by the Installer.....	4
Vista and Server 2008 Help.....	4
Default All button not translated.....	4
PostScript Driver Issues	4
Printer Driver Installation	5

Release Content

This release includes both HP-GL/2 and PostScript printer drivers.

This release is provided add support for Accxes 14.1, and provide SPAR fixes.

This release is provided with English, French, Italian, German, Spanish, and Portuguese languages.

New or Changed in this Release

This release adds the following:

- Support for Accxes 14.1
- SPAR and bug fixes.

SPARs fixed in this release

- **799758970**: HP-GL/2 driver and accounting problem.
- **774588396**: Driver set to Film media and Film media installed in Drawer 2 prompt for the user to install Bond Media in the machine.
- **631663901**: same as **799758970**.

Known Issues

ARCH 15 media support is missing in 6622

This release is missing support for the Arch 15 media size for 6622. The “Custom size” or “User Defined Media” features can be used to access 15 inch media until a fix is released.

AutoDesk Design Review 2010

This release does not support AutoDesk Design Review 2010.

Job Accounting not saved in HP-GL/2 driver

Saving the Job Accounting information (“Save IDs”) from the printers folder in the HP-GL/2 driver does not work. You must enter the information during the application print.

Windows XP clients and Windows Server 2003 R2 cluster

When the PostScript or HP-GL/2 driver is installed on and shared from a Windows Server 2003 R2 cluster, and Windows XP clients install the drivers from the cluster, the XP client drivers do not work correctly. The workaround is to install the drivers locally on the XP client.

Windows Vista and Windows 7 clients and Windows Server 2003 R2 cluster

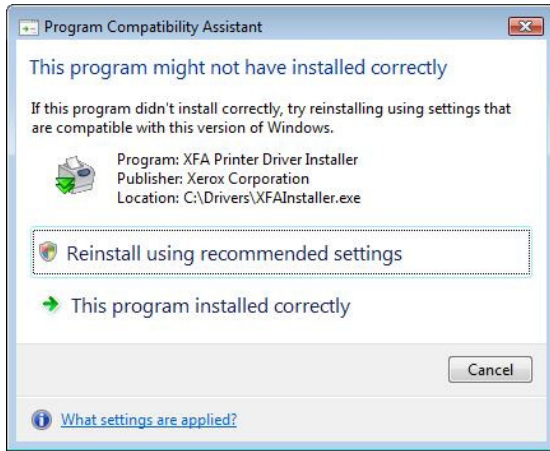
When adding printers to a Windows 7 machine from a Windows Server 2003 R2 cluster, only one printer can be added. When installing a 64 bit PS printer from a Windows Server 2003 R2 cluster to a Vista client machine, the “Refresh on Open” checkbox is checked.

Installer Issues

The installer is not digitally signed, so you may get a warning from UAC.

The installer is not translated yet.

When run on Vista or Windows 7, the installer will say it has completed successfully, but then sometimes Windows will display a message like this:



If you click “This program installed correctly”, the printer which was installed is installed correctly.

Additional Drivers are not Installed or Upgraded by the Installer

Additional Drivers are drivers for a different hardware architecture than the one Windows is running on. For example, if Windows is running on an x86 processor, “Additional Drivers” are for the x64 architecture. Additional drivers are typically only installed on a server, not a client.

The installer does not upgrade or install Additional Drivers. Installation of Additional Drivers must be done using the Add Printer Wizard. Upgrading Additional Drivers is done by removing the old drivers, rebooting, and installing the new drivers.

Vista and Server 2008 Help

The “?” button in the tabs and dialogs is not supported in Vista and Server 2008. However, selecting a control and pressing F1 will bring up the help (for controls which the user can interact with).

Default All button not translated

The “Default All” button text has not been translated. Instead, the existing word for “Default” was used and the English word “ALL” was appended. The correct translations will be in the next release.

PostScript Driver Issues

When you change the port from an IP address to FILE, sometimes this causes printer/properties to fail thereafter. Printing, and printer preferences, continue to work.

Certain very long plots may not print correctly from Spicer Imagination 8 with the PostScript driver.

Printer Driver Installation

Follow the procedure in the Xerox FreeFlow Accxes Print Server Drivers and Client Tools Software Installation Guide.

