

Customer Release Notes

Phaser 3610 and WorkCentre 3615

Engine Firmware version 5.34.00



Release Date: 07/28/2014

Software Release Details

Component	Version
Engine	5.34.00

Purpose

This firmware release contains the following enhancements:

- Fixes a problem where an "077-106 Exit on Jam" error can occur when printing multiple jobs in succession from Tray 2.

The Firmware Release is located at:

<http://www.support.xerox.com/go/getfile.asp?objid=128421&EULA=28&Xtype=download&uType=>

Firmware Upgrade Process

Note: For security reasons the setting for “Software Download” is disabled by default and the printer will not allow any FW updates to be processed.

The “Software Download” setting must be set to “Enable” before the printer can accept a firmware update. If the printer displays the error “Error 016-746 Prohibition Error” when the firmware is sent, then the “Software Download” setting is set to “Disable”.

To change the Software Download setting to “Enable” in CentreWare Internet Services on the WorkCentre 3615 and Phaser 3610:

- Go to Properties > Security > Secure Settings > Software Download > Enable

To change the Software Download setting to “Enable” from the front panel on the WorkCentre 3615:

- Go to Machine Status > Tools > Admin Settings > Secure Settings > Software Download > Enable

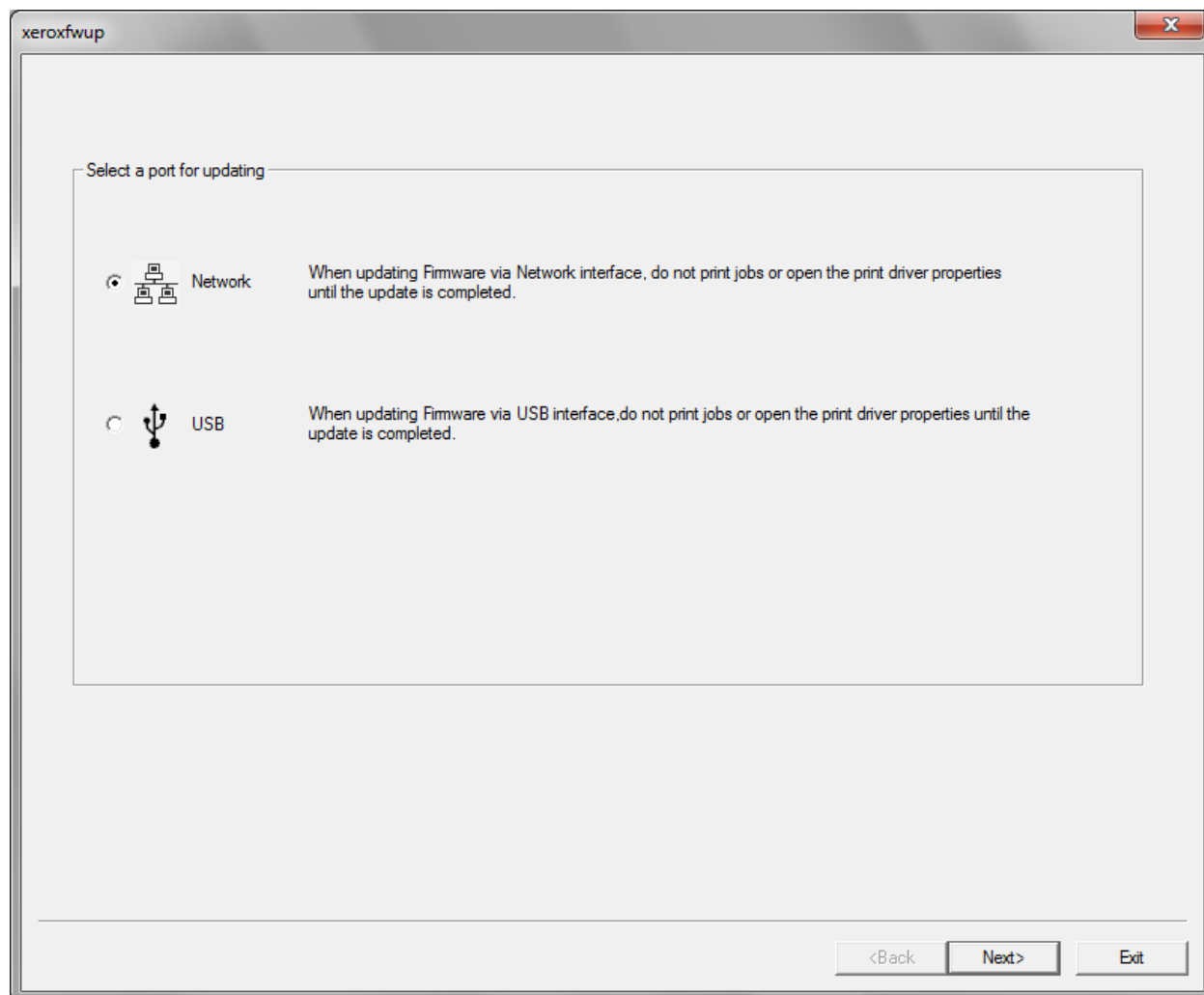
To change the Software Download setting to “Enable” from the front panel on the Phaser 3610:

- Go to Menu > Admin Settings > System Settings > S/W Download > Enable

Upgrading firmware from Windows Operating Systems

Caution: Do Not Reboot or Turn Off the printer during the firmware update process. The printer will automatically reboot when finished downloading the firmware.

1. Make sure the printer is powered on and connected over network or USB.
2. On the printer, print a Configuration Page or Printer Settings Report to document the current printer settings.
3. On the computer, unzip the firmware file and double-click on the **.exe** firmware update icon
4. The **xeroxfwup** window with the connection options is displayed. Two connections are available for updating the firmware, Network and USB. When updating devices that only have USB connections, only the USB connection option will be displayed. Select your connection and press **Next**



- **For Network connection:**

- If your printer IP address is listed, check the checkbox next to your printer. Click the **Next** button.

xeroxfwup

Please select printers to update.
Update data will be sent to the printer when you click Next.

Module Name:Printer F/W(201104251224)

	IPv6 Address	IPv4 Address	Printer Name	Printer F/W	Status
<input checked="" type="checkbox"/>	-	13.123.12.184	Xerox WorkCentre 6505...	201104251224	Completed
<input type="checkbox"/>	-	13.123.12.74	Xerox WorkCentre 6505...	201011091526	Not complete

Refresh Add Community

<Back Next> Exit

- If your printer IP address is not listed, click the **Add** button.
- Enter your printer IP address and click the **OK** button.

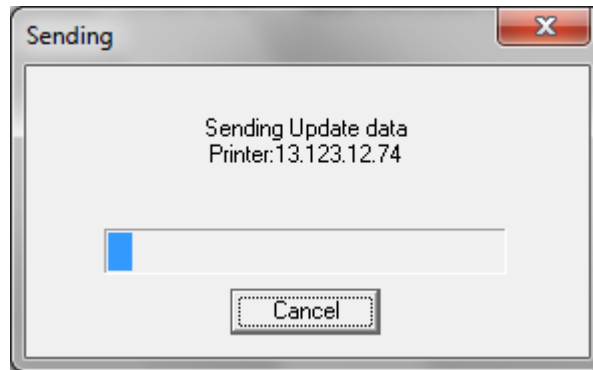
Add

☐ IPv6 Address ::

☒ IPv4 Address 192 . 168 . 1 . 16

OK Cancel

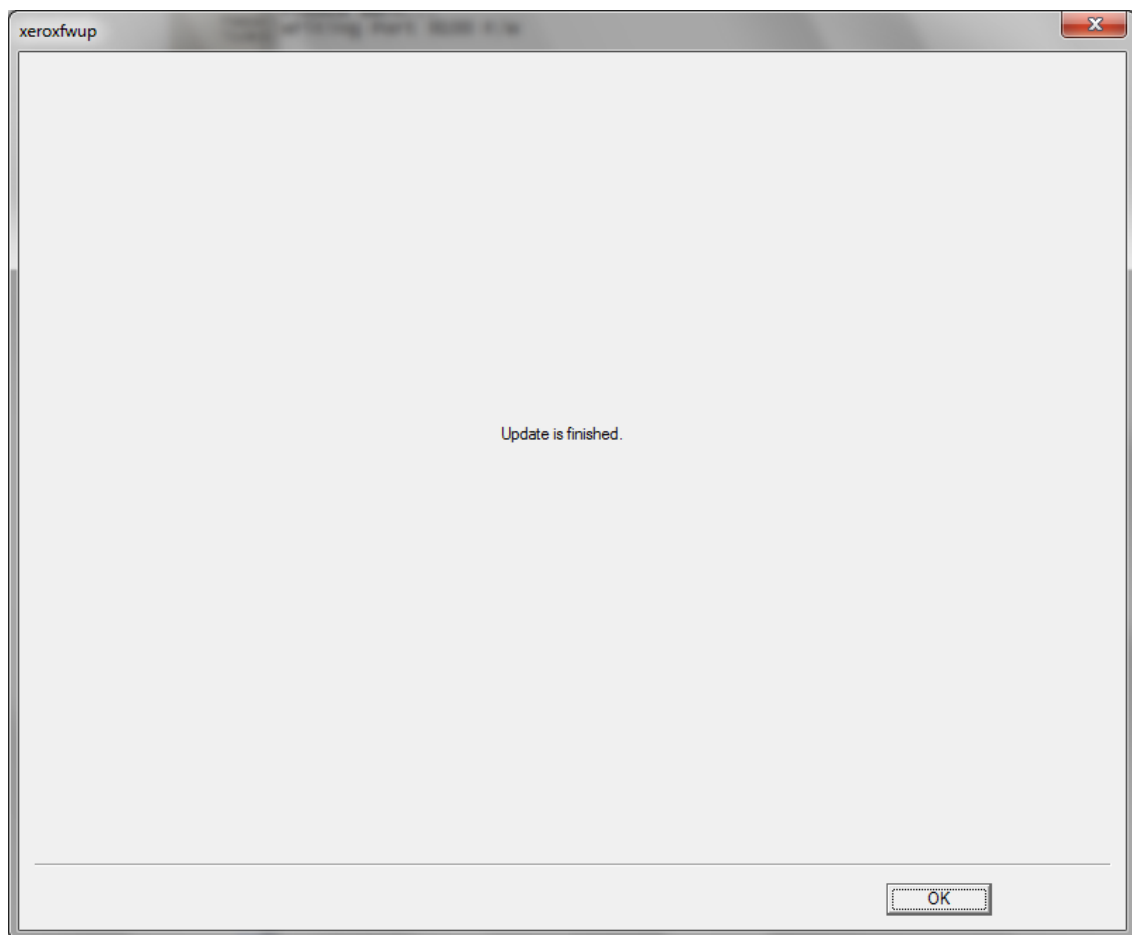
- Check the checkbox next to your printer IP address and click the **Next** button to send the firmware to your printer.



- The following messages will be displayed on your printer. These messages may vary slightly depending on the printer model, and whether you are upgrading the controller or engine firmware.

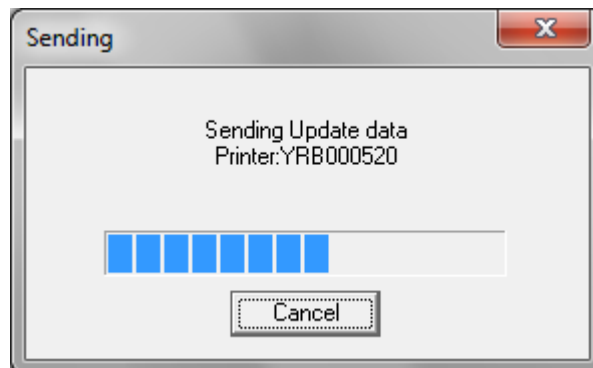
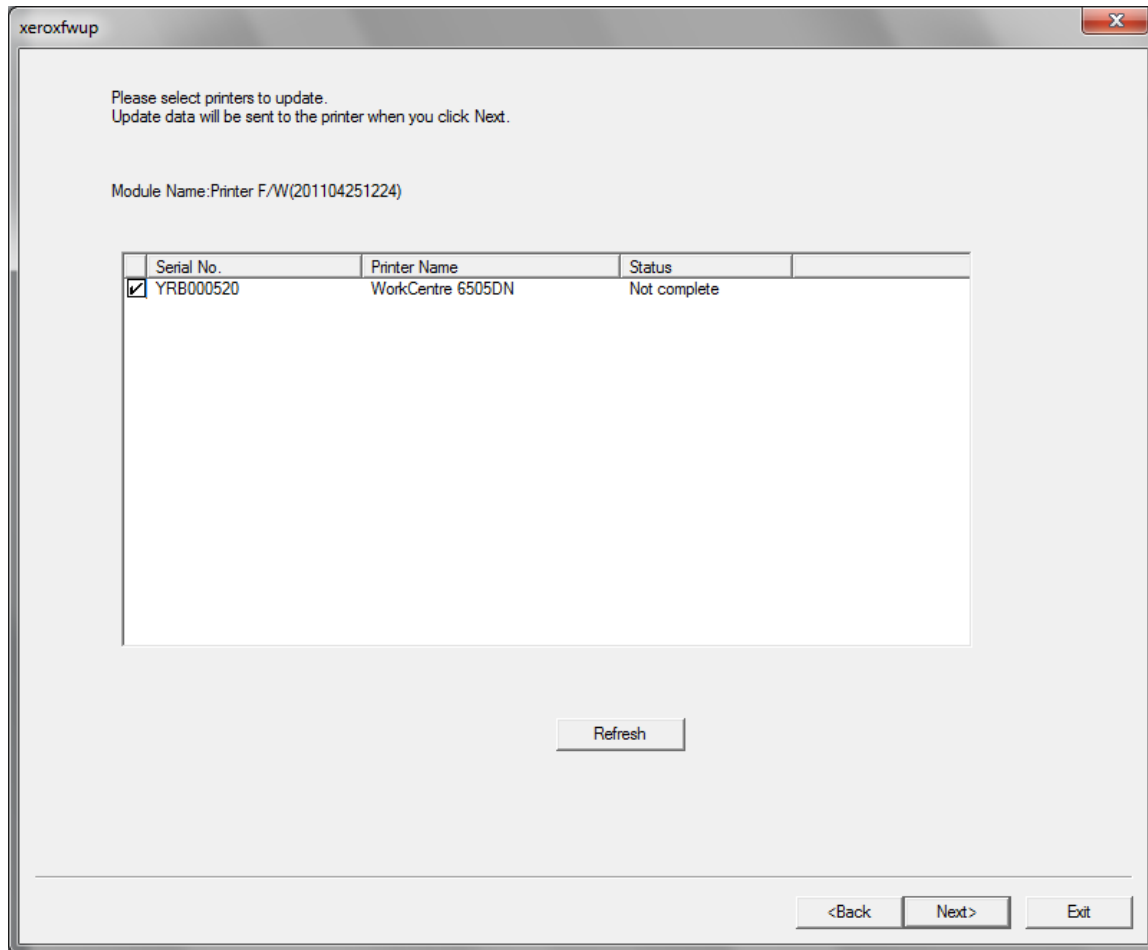
Receiving Data
Port 9100
Please Wait...
Writing Port 9100 F/W

- The printer will reboot after the firmware is updated. Print a Configuration Page or Printer Settings Report to verify the updated firmware version.
- After the firmware upgrade is complete, click the **OK** button to exit the firmware upgrade tool.



- **For USB connection:**

- Check the checkbox next to your printer. Click the **Next** button to send the firmware to your printer.



- The following messages will be displayed on your printer. These messages may vary slightly depending on the printer model, and whether you are upgrading the controller or engine firmware.

Receiving Data
USB
Please Wait...
Writing USB F/W

- The printer will reboot after the firmware is updated. Print a Configuration Page or Printer Settings Report to verify the updated firmware version.
- After the firmware upgrade is complete, click the **OK** button to exit the firmware upgrade tool.

