

# Kit Installation Instructions

PSG SPAR Team

Product(s):	EX260 v2.0 for DocuColor 242/252/260	Date:	10/22/08
Title:	1-YUUSZ Installation instructions	Page:	1 of 2

## Purpose

This software kit provides an EX260 software update in response to an EX260 SPAR. Refer to the included customer letter for more information.

In the event of an EX260 system reinstall this software should be reapplied.

## Kit Contents

Qty.	Description
1	Kit Installation Instructions
1	Customer Letter
1	1-YUUSZ.zip file

## Prerequisites

- Previous working knowledge with the EX260
- The EX260 must be at version 2.0 prior to performing this install. This software is supplemental to the 2.0 launch software.
- The following patches must be loaded prior to installing this patch. They are available via System Updates or [www.xerox.com](http://www.xerox.com)
  - 1-VT062
  - 1-XMDF0

## Recommendations

- EFI Command Workstation 4.6.0.34 or higher is highly recommended to ensure that the fixes applied by patch 1-YUUSZ are activated.
- J2SE Runtime Environment 5.0 Update 10 or higher is highly recommended to ensure that the fixes applied by patch 1-YUUSZ are activated.

## Installation Instructions

**NOTE:** This software may be installed by the customer.

### Install the EX260 1-YUUSZ patch:

- \_\_\_ 1. Copy the 1-YUUSZ.zip file to a PC
  - \_\_\_ a. Unzip the file
  - \_\_\_ b. Open the 1-YUUSZ folder
- \_\_\_ 2. Install the 1-YUUSZ patch
  - \_\_\_ a. Double click on the 1-YUUSZ.exe file

- \_\_\_ b. At the Fiery Patch Download window, click [Next]

- \_\_\_ c. At the License Agreement window, click [Accept]

- \_\_\_ d. At the Fiery Logon window, type the Fiery administrator login password in the Password field

**NOTE:** Do NOT change the User field; that value must be admin.

- \_\_\_ e. In the Hostname field, type in the IP address or hostname of the EX260 and select [Connect]

- \_\_\_ f. At the Server Information window, select [Download]. The patch will be downloaded and installed

- \_\_\_ g. At the Processing window, select [Next], wait for approximately one (1) minute

- \_\_\_ h. On the final window, select [Reboot], then select [Finish]

**NOTE:** The patch will not be installed until the EX260 is rebooted.

- \_\_\_ 3. Verify that the patch is installed and wrap-up

- \_\_\_ a. Once the Fiery status says "Idle," select [Server: Print Pages] from the CWS menu and print a configuration page.

- \_\_\_ b. On the "System Update Log" sheet of the configuration pages, ensure that the patch 1-YUUSZ is listed

- \_\_\_ c. At the PC, delete the 1-YUUSZ.zip file and the 1-YUUSZ folder.

**NOTE:** When executing 1-YUUSZ.exe, if you choose **Restart later** when prompted by the Fiery Patch Downloader, please make sure you manually reboot the server for changes to take effect.

**NOTE:** This patch is Exclusive which means it must be installed independently and the server rebooted/restarted once. After which, other patches can be applied to the server.

Instruction #:	Kit Part #:	Date: 10/22/08	Page: 2 of 2
----------------	-------------	-------------------	-----------------

### Upgrade CWS to version 4.6.0.34 or higher:

1. If a previous version of Command Workstation is currently installed on your PC, visit Xerox.com, go to **Support & Drivers**, and navigate to the **Drivers and Downloads** page for the EX260 for DC242/252/260.
2. Download the latest release of CWS 4.6.0.34 or higher.
3. Follow the provided installation instructions to install Command Workstation.

### Update J2SE Runtime Environment:

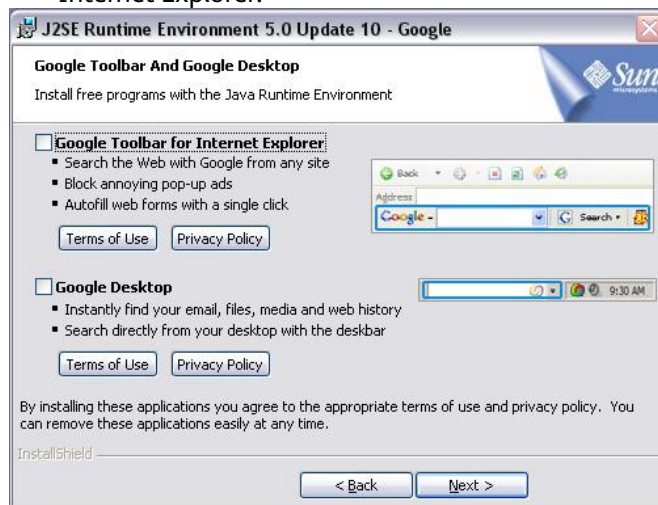
**NOTE :** The following installation may not occur if the current version of J2SE is already updated to version 10.

J2SE Runtime Environment 5.0 Update 10  
Installation:

1. Agree to the license agreement. Select Typical setup -



2. Remove the selection for Google Toolbar for Internet Explorer.



3. Click Finish to finish the installation of J2SE installation.

