

# Customer Release Notes



## WorkCentre 6015N/I

## Firmware Release version 01.00.23

Release Date: August 2012

### Software Release Details

Component	Version
Firmware	01.00.23

### Purpose

This firmware release contains the following fixes:

- Changed the default TIFF type for scanning to TTN2
- Problem setting a password that contains special characters when creating an SMB address book entry in CWIS.
- Problem entering Russian characters in the "Printer Location" field in CWIS
- improved the wording for some error messages
- Data LED light should be on when a fax is stored in memory
- corrected some branding issues

This release also contains all of the fixes from firmware version 01.00.18:

- Firmware security: the ability to update firmware will now be disabled by default. The new Software Download setting is accessed on the front panel by going to System > Admin Menu > Secure Settings > Software Download.
- The print resolution was reported incorrectly in CentreWare Internet Services
- Russia Fax: DTFM value set to -3dB & ring sensitivity fixed
- SNMP supplies status reporting improvements

#### New feature:

There is a new menu item under: Menu > Admin Menu > Secure Settings > Software Download. It is set to Disable by default. When Software Download is set to Disable, and a firmware file is sent to the printer, the message "Cancelling..." will appear on the printer's front panel display. After the firmware download is automatically cancelled, the printer will return to the Read to Print state.

**NOTE:** For best security leave this control set to disabled after upgrading your software. The control must be set to enabled prior to doing a software upgrade.

### I. Installation Notes

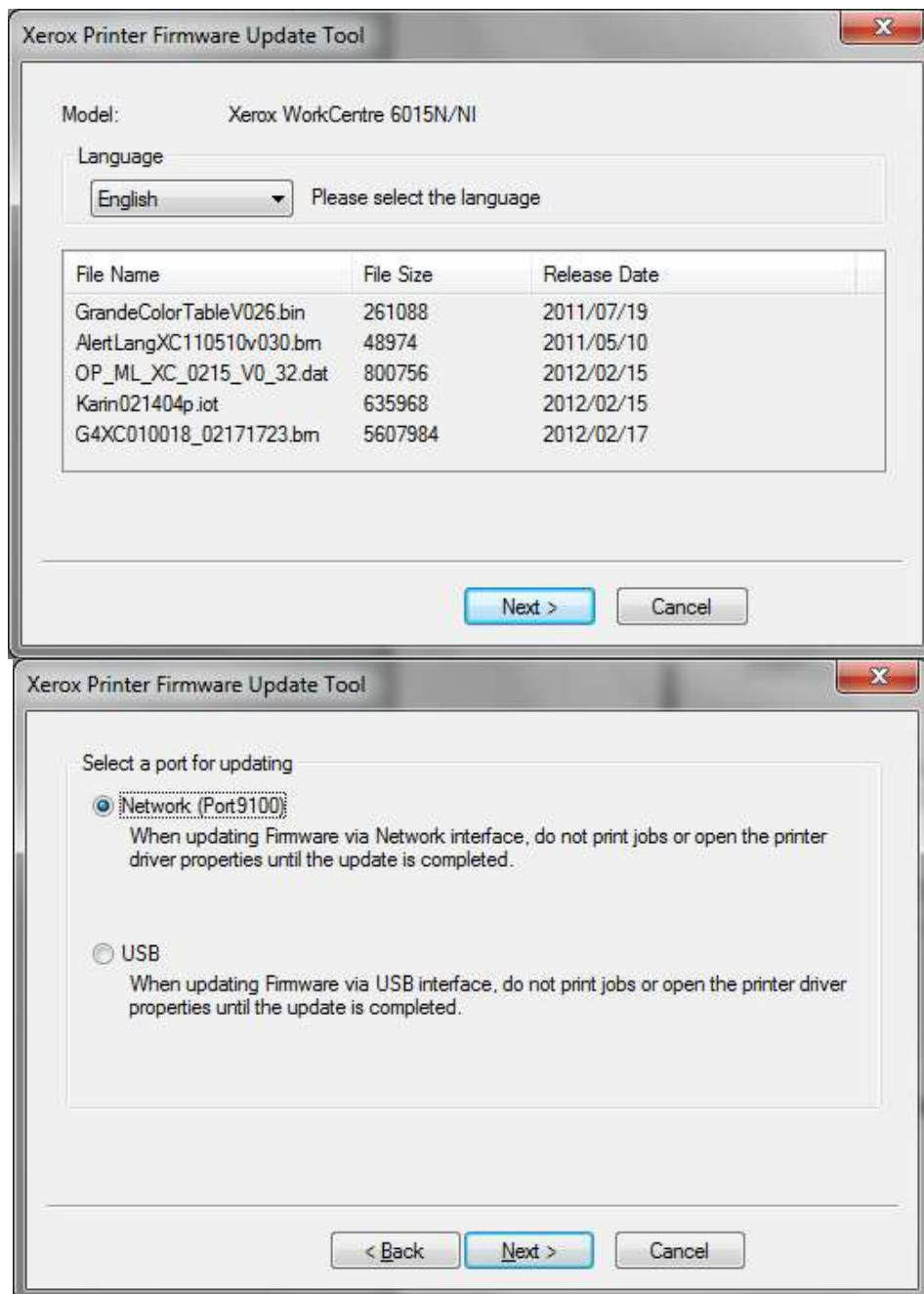
The Firmware Release is located at Drivers and Download page for the WorkCentre 3045 at Xerox.com

## Firmware Upgrade Process

### Windows Operating Systems

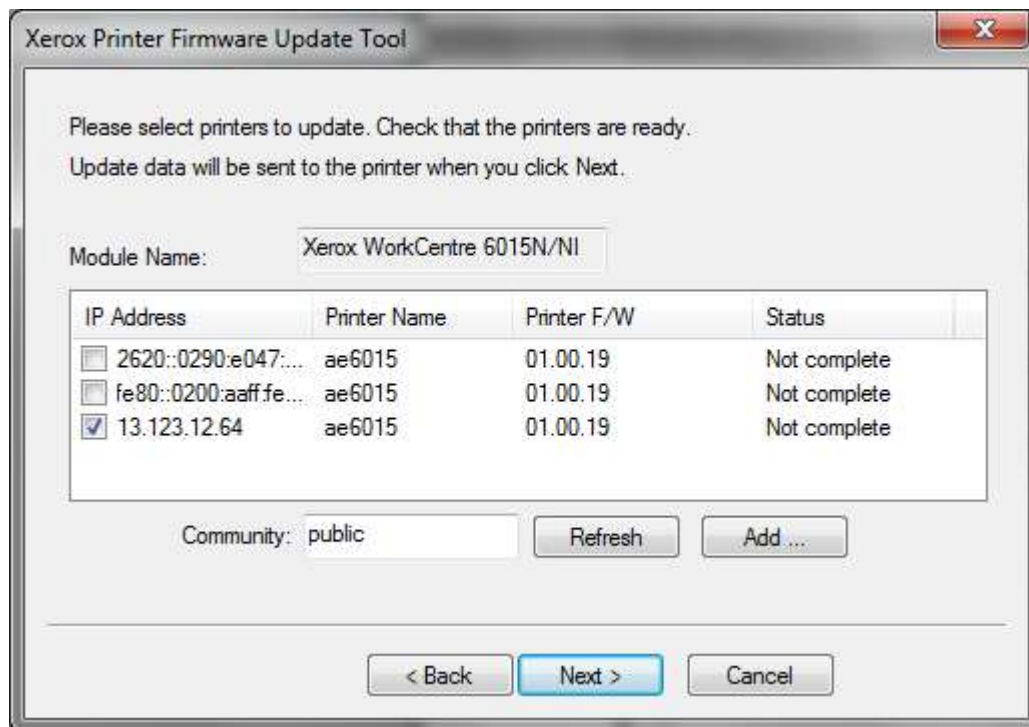
**Caution: Do Not Reboot or Turn Off the printer during the firmware update process. The printer will automatically reboot when finished downloading the firmware.**

1. Make sure the printer is powered on and connected over network or USB.
2. On the printer, print a System Settings Report to document the current printer settings.
3. On the computer, double-click on the **xrfdwl\_6015N.exe** icon located in the firmware folder.
4. The **Xerox Printer Firmware Update Tool** window with the firmware files is displayed. Press **Next**
5. Two connections are available for updating the firmware, Network and USB. When updating devices that only have USB connections, only the USB connection option will be displayed. Select your connection and press **Next**

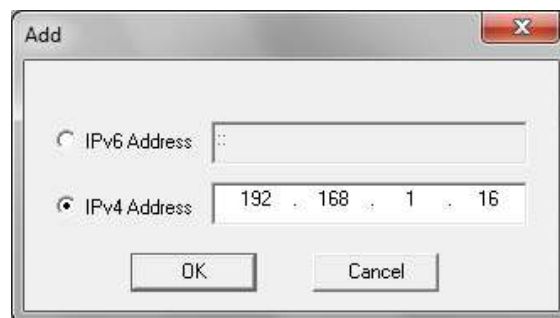


- **For Network connection:**

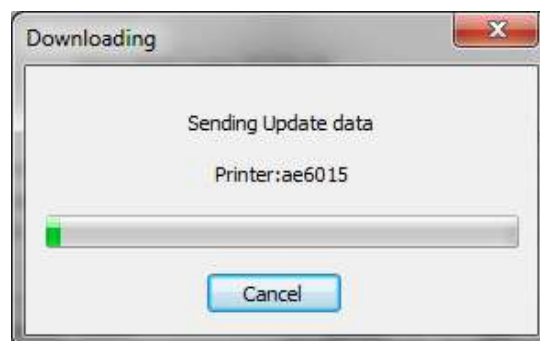
- If your printer IP address is listed, check the checkbox next to your printer. Click the **Next** button.



- If your printer IP address is not listed, click the **Add** button.
- Enter your printer IP address and click the **OK** button.



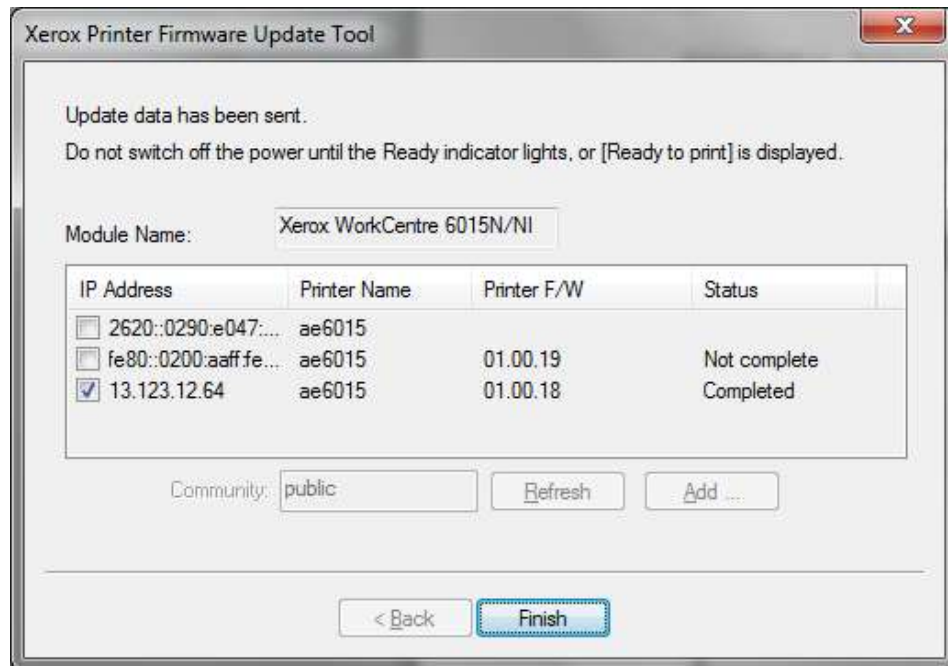
- Check the checkbox next to your printer IP address and click the **Next** button to send the firmware to your printer.



- The following messages will be displayed on your printer. These messages may vary slightly depending on the printer model, and whether you are upgrading the controller or engine firmware.

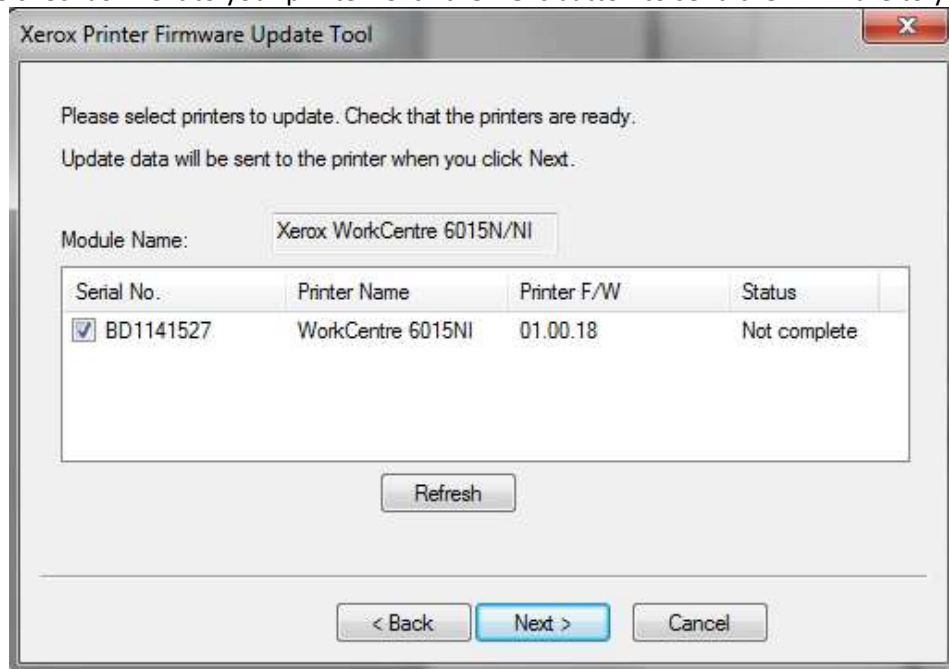
Downloading...  
Network F/W

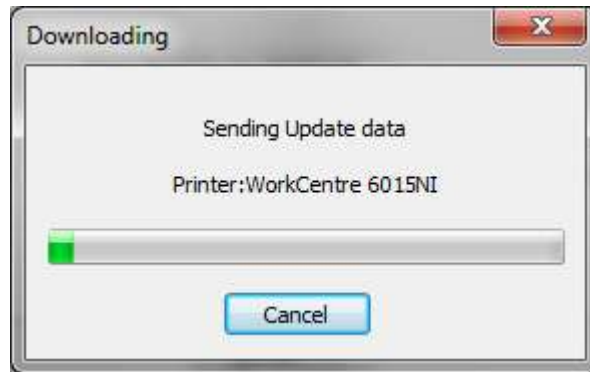
- The printer will reboot after the firmware is updated. Print a System Setting Report to verify the updated firmware version.
- After the firmware upgrade is complete, click the **Finish** button to exit the firmware upgrade tool.



#### • For USB connection:

- Check the checkbox next to your printer. Click the **Next** button to send the firmware to your printer.



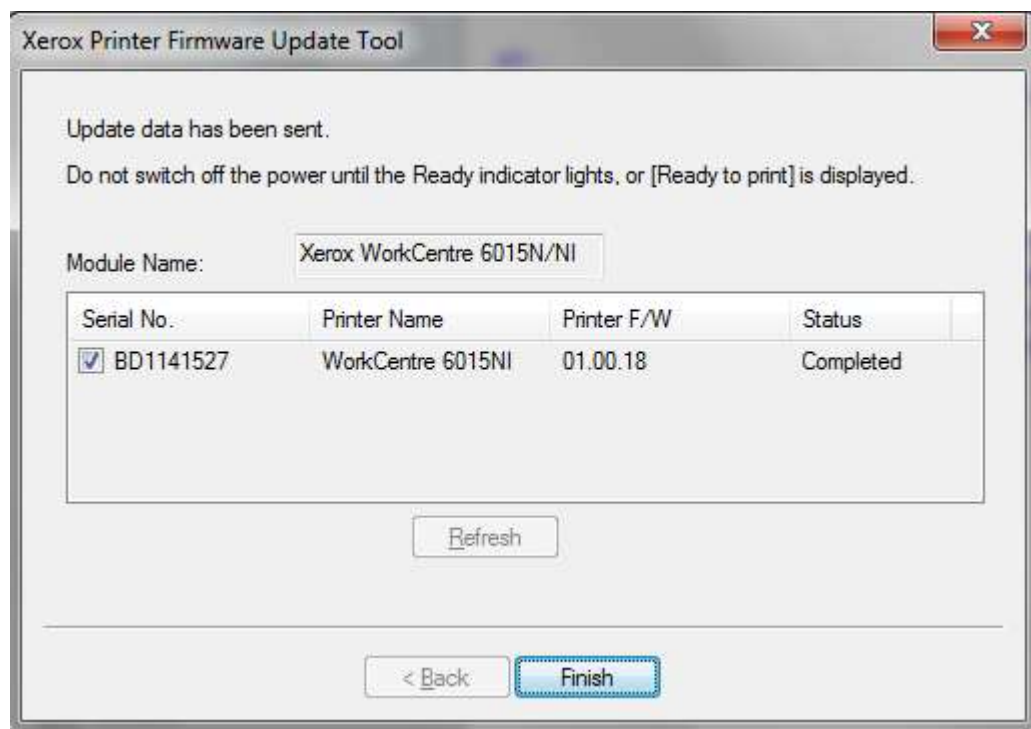


- The following messages will be displayed on your printer. These messages may vary slightly depending on the printer model, and whether you are upgrading the controller or engine firmware.

Downloading...

USB F/W

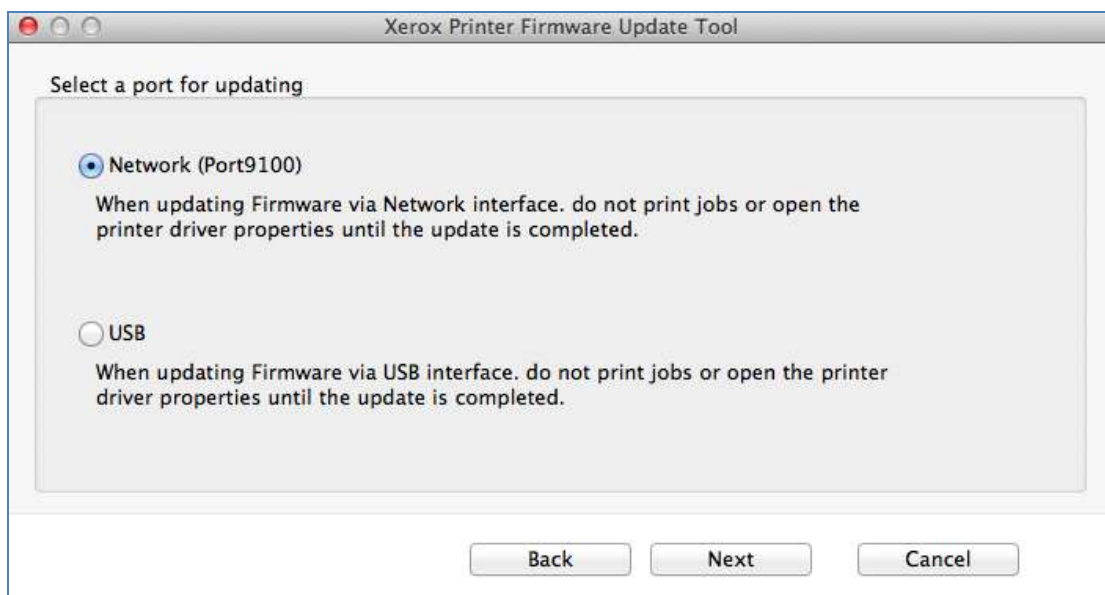
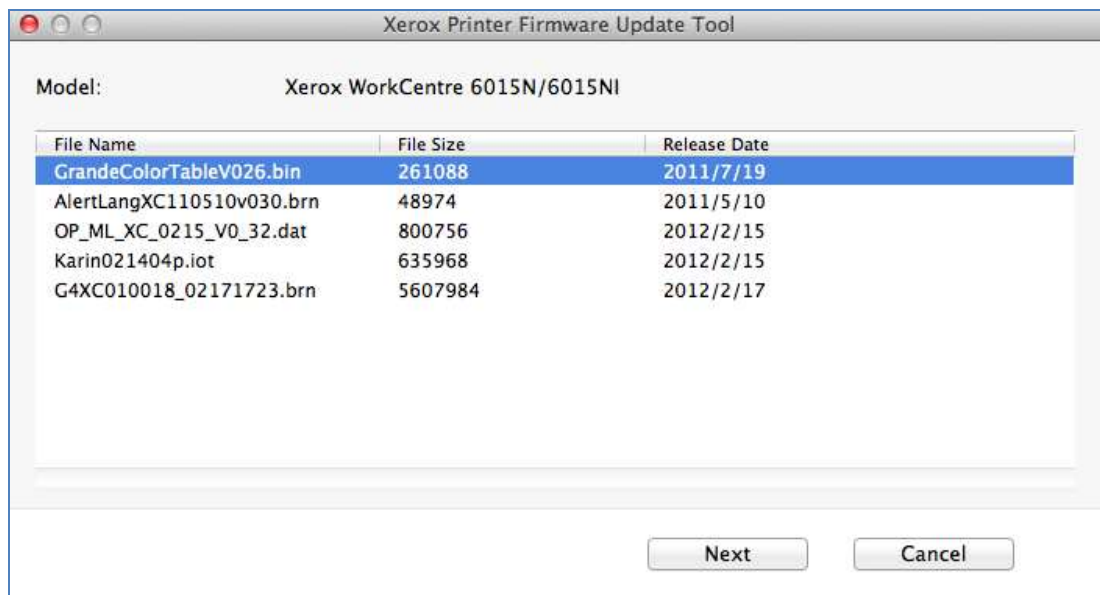
- The printer will reboot after the firmware is updated. Print a System Settings Report to verify the updated firmware version.
- After the firmware upgrade is complete, click the **Finish** button to exit the firmware upgrade tool.



## Mac Operating Systems

**Caution: Do Not Reboot or Turn Off the printer during the firmware update process. The printer will automatically reboot when finished downloading the firmware.**

1. Make sure the printer is powered on and connected over network or USB.
2. On the printer, print a System Settings Report to document the current printer settings.
3. On the computer, double-click on the **xrfdwl\_6015N.app** icon located in the firmware folder.
4. The **Xerox Printer Firmware Update Tool** window with the firmware files is displayed. Press **Next**
5. Two connections are available for updating the firmware, Network and USB. When updating devices that only have USB connections, only the USB connection option will be displayed. Select your connection and press **Next**



### • For Network connection:

- If your printer IP address is listed, check the checkbox next to your printer. Click the **Next** button.



Please select printers to update.  
Update data will be sent to the printer when you click [Next].

Module Name:

	IP Address	Printer Name	Printer F/W	Status
<input checked="" type="checkbox"/>	13.123.12.64	ae6015	01.00.19	Ready
<input type="checkbox"/>	fe80::200...ee2:8026	ae6015	01.00.19	Ready

Community:

- If your printer IP address is not listed, click the **Add** button.
- Enter your printer IP address and click the **OK** button.

Add IP Address

☐ IPv6 Address:

☒ IPv4 Address:

- Check the checkbox next to your printer IP address and click the **Next** button to send the firmware to your printer.

Sending 59%

Sending Update data

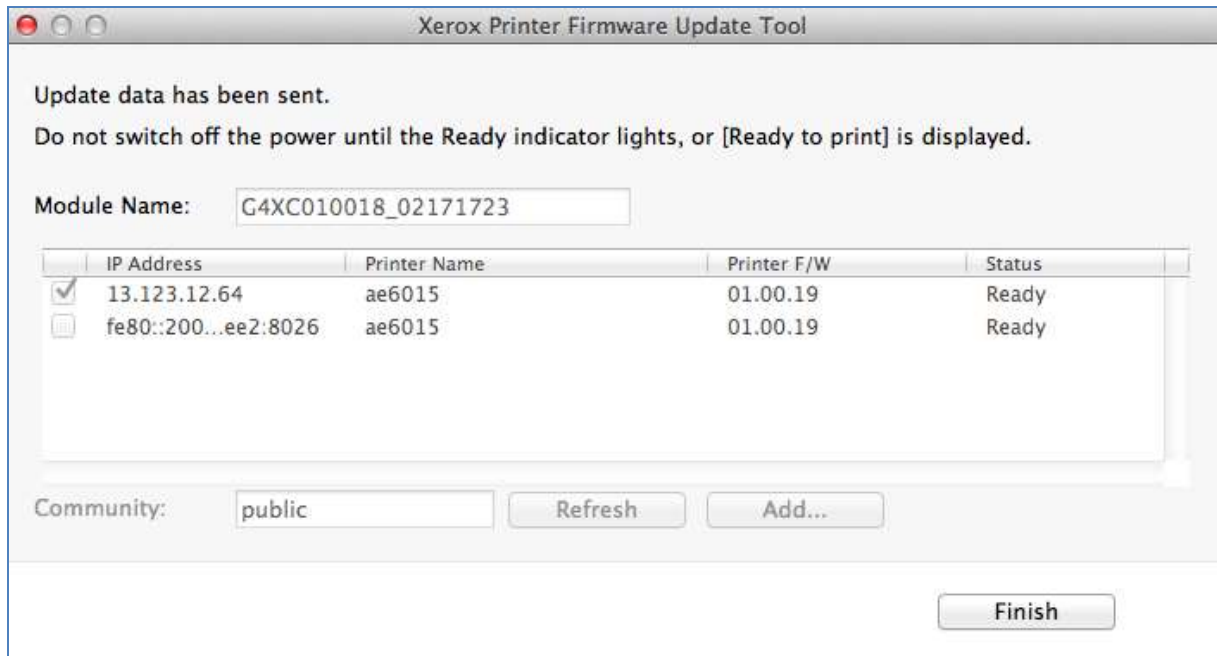
Printer: ae6015

- The following messages will be displayed on your printer. These messages may vary slightly depending on the printer model, and whether you are upgrading the controller or engine firmware.

Downloading...

#### Network F/W

- The printer will reboot after the firmware is updated. Print a System Setting Report to verify the updated firmware version.
- After the firmware upgrade is complete, click the **Finish** button to exit the firmware upgrade tool.



Update data has been sent.  
Do not switch off the power until the Ready indicator lights, or [Ready to print] is displayed.

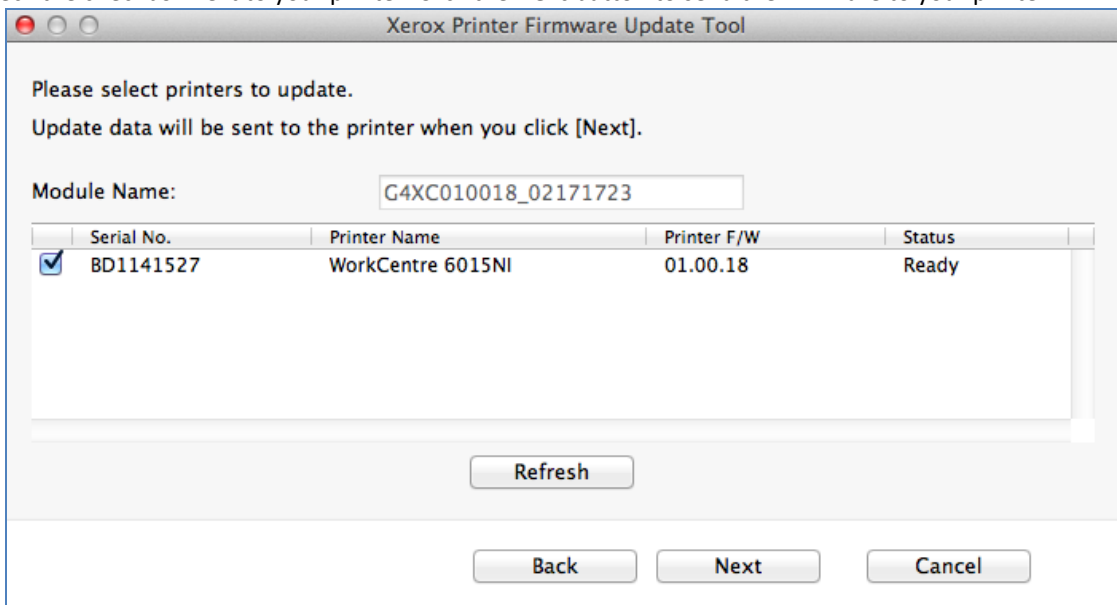
Module Name:

	IP Address	Printer Name	Printer F/W	Status
<input checked="" type="checkbox"/>	13.123.12.64	ae6015	01.00.19	Ready
<input type="checkbox"/>	fe80::200...ee2:8026	ae6015	01.00.19	Ready

Community:

#### • For USB connection:

- Check the checkbox next to your printer. Click the **Next** button to send the firmware to your printer.

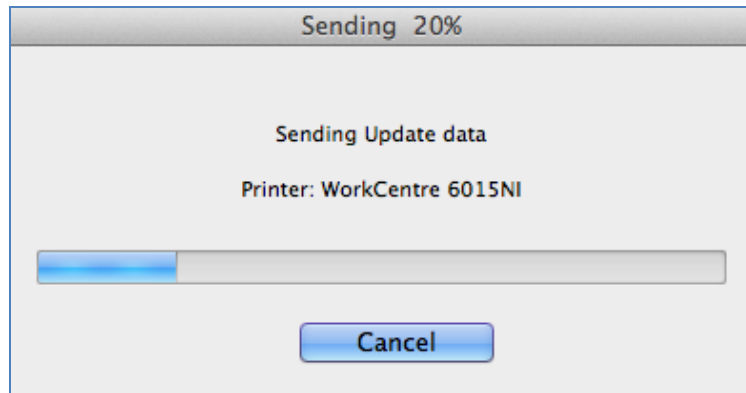


Please select printers to update.  
Update data will be sent to the printer when you click [Next].

Module Name:

	Serial No.	Printer Name	Printer F/W	Status
<input checked="" type="checkbox"/>	BD1141527	WorkCentre 6015NI	01.00.18	Ready





- The following messages will be displayed on your printer. These messages may vary slightly depending on the printer model, and whether you are upgrading the controller or engine firmware.

Downloading...

USB F/W

- The printer will reboot after the firmware is updated. Print a System Settings Report to verify the updated firmware version.
- After the firmware upgrade is complete, click the **Finish** button to exit the firmware upgrade tool.

