

Customer Release Notes

WorkCentre 6015B

Firmware Release version 1.00.13



Release Date: August 2012

Software Release Details

Component	Version
Firmware	1.00.13

Purpose

This firmware release contains the following fixes:

- Changed the default TIFF type for scanning to TTN2
- improved the wording for some error messages
- corrected some branding issues
- corrected an issue that resulted in "116-343 ASIC Fail" error

I. Installation Notes

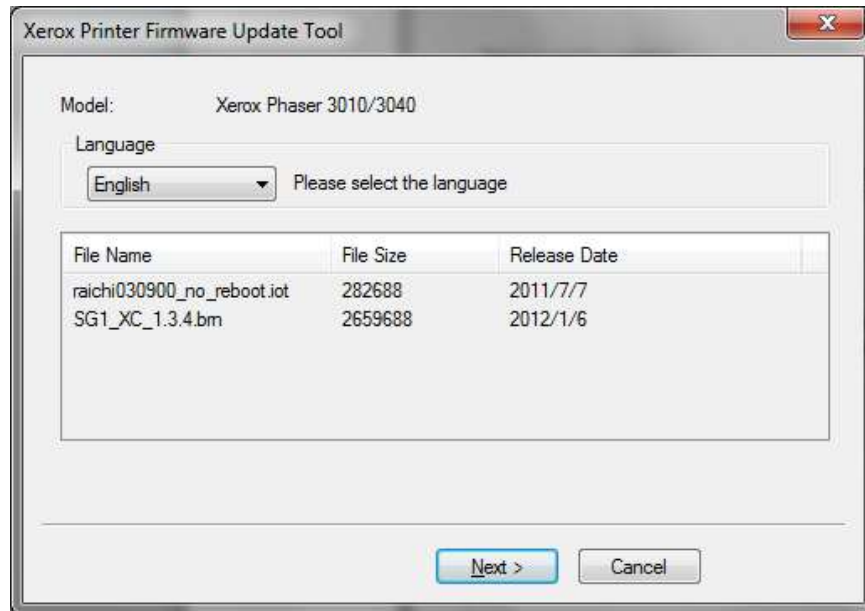
The Firmware Release is located at Drivers and Download page for the WorkCentre 6015 at Xerox.com

Firmware Upgrade Process

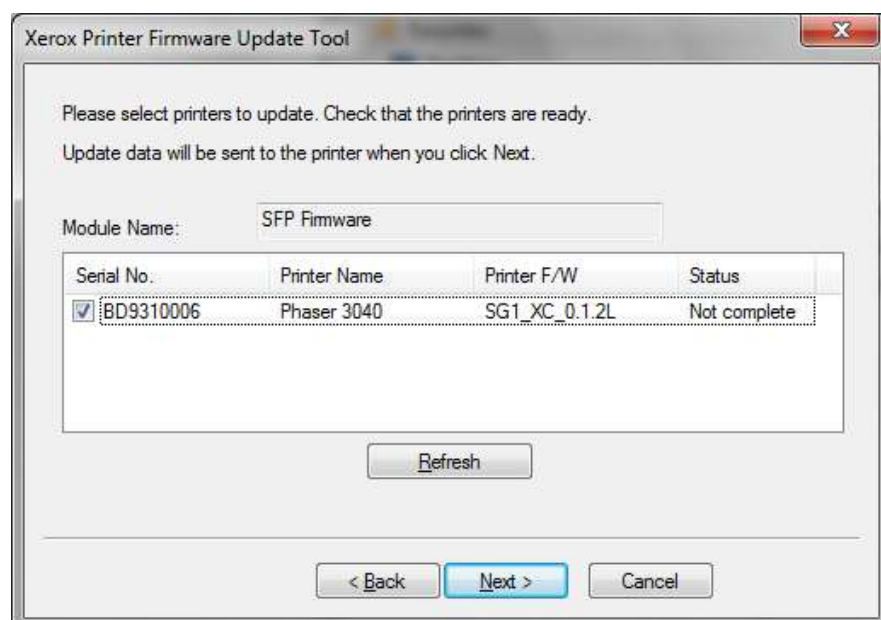
Windows Operating Systems

Caution: Do Not Reboot or Turn Off the printer during the firmware update process. The printer will automatically reboot when finished downloading the firmware.

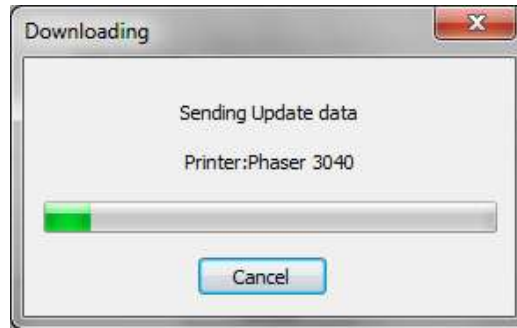
1. Make sure the printer is powered on and connected over USB.
2. On the printer, print a System Settings Report to document the current printer settings.
3. On the computer, double-click on the **xrfdl_6015B.exe** icon located in the firmware folder.
4. The **Xerox Printer Firmware Update Tool** window listing the firmware components is displayed. Press the **Next** button.



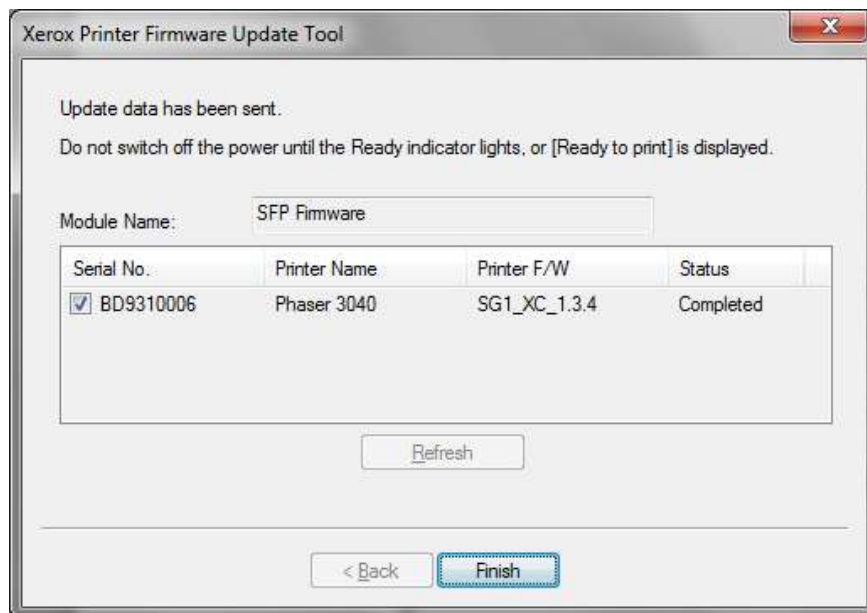
5. Check the box for the printer you want to update, and press the **Next** button to send the firmware update to your printer.



- The following message will be displayed:



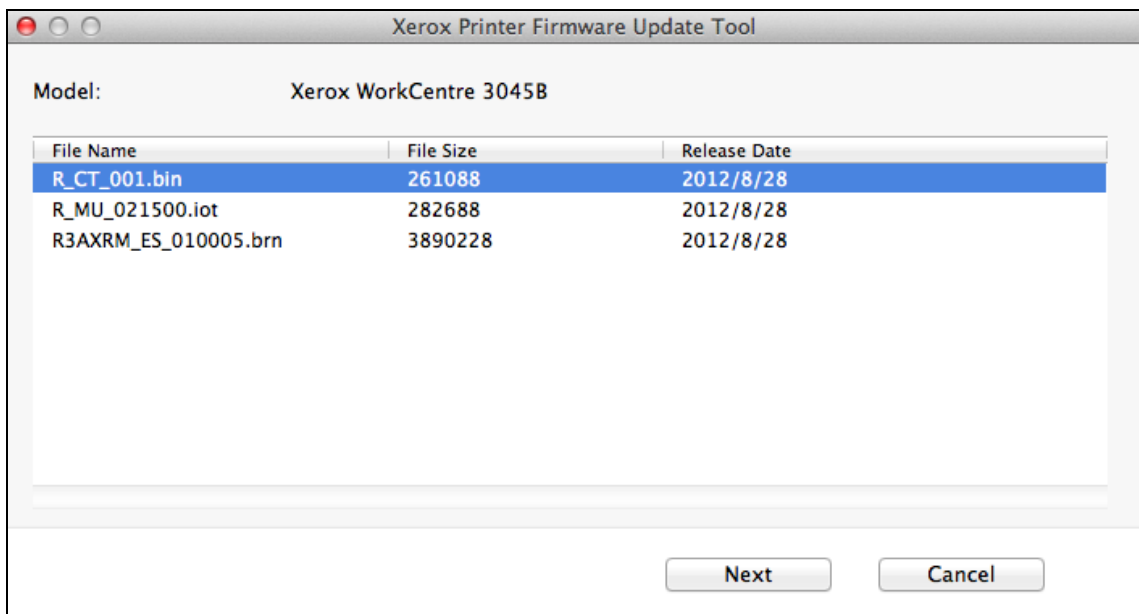
- The printer's green LED light will blink while it is receiving the firmware update.
 - The printer will reboot after the firmware is updated. Print a System Settings Report to verify the updated firmware version.
6. After the firmware upgrade is complete, click the **Finish** button to exit the firmware upgrade tool.



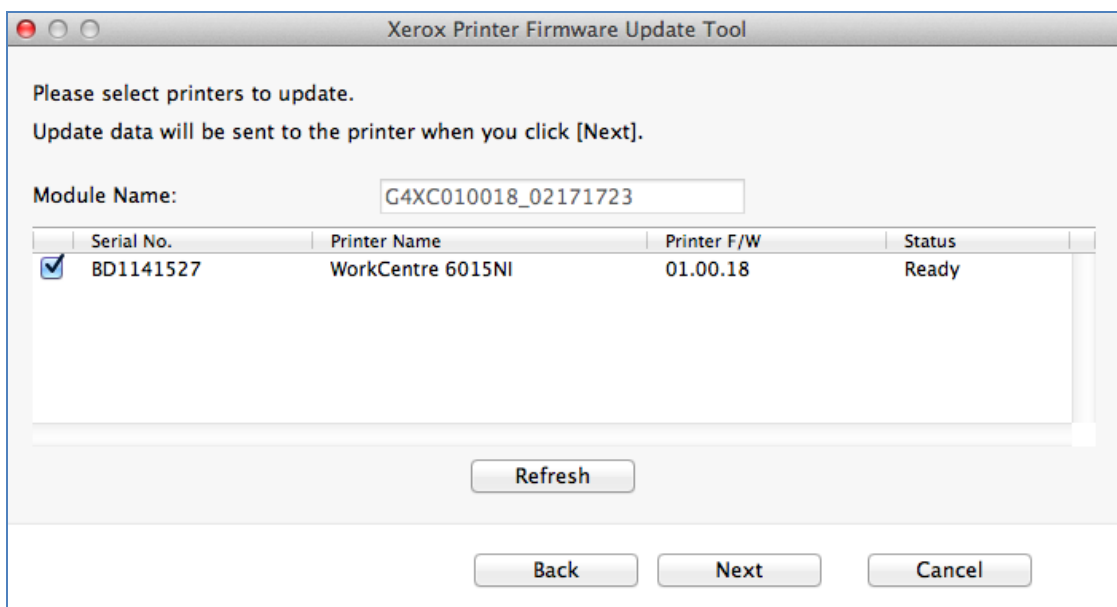
Mac Operating Systems

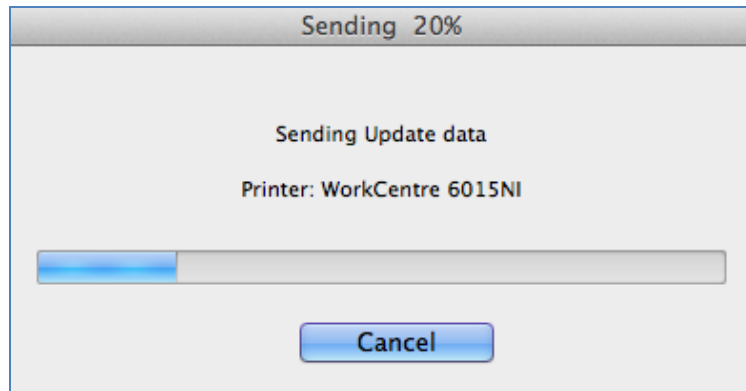
Caution: Do Not Reboot or Turn Off the printer during the firmware update process. The printer will automatically reboot when finished downloading the firmware.

1. Make sure the printer is powered on and connected over network or USB.
2. On the printer, print a System Settings Report to document the current printer settings.
3. On the computer, double-click on the **xrfdwl_6015B.app** icon located in the firmware folder.
4. The **Xerox Printer Firmware Update Tool** window with the firmware files is displayed. Press **Next**



- Check the checkbox next to your printer. Click the **Next** button to send the firmware to your printer.





- The following messages will be displayed on your printer. These messages may vary slightly depending on the printer model, and whether you are upgrading the controller or engine firmware.

Downloading...

USB F/W

- The printer will reboot after the firmware is updated. Print a System Settings Report to verify the updated firmware version.
- After the firmware upgrade is complete, click the **Finish** button to exit the firmware upgrade tool.

