

Technical bulletin

Installing the Gloss Enhanced patch for the Xerox CX Print Server for the Xerox Color 550/560 Printer

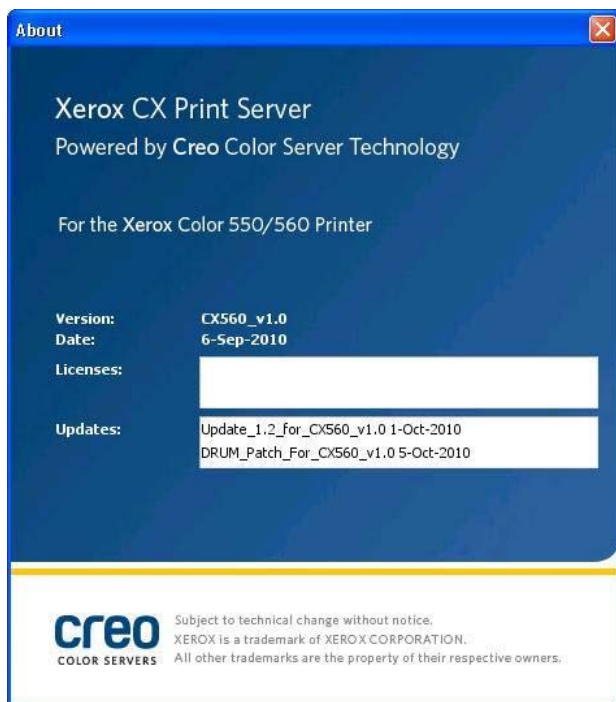
Problem description

To add a glossy finish to the pages of your jobs, install the **GlossEnhanced_Patch_For_CX560_v1.0** patch.

Prerequisite

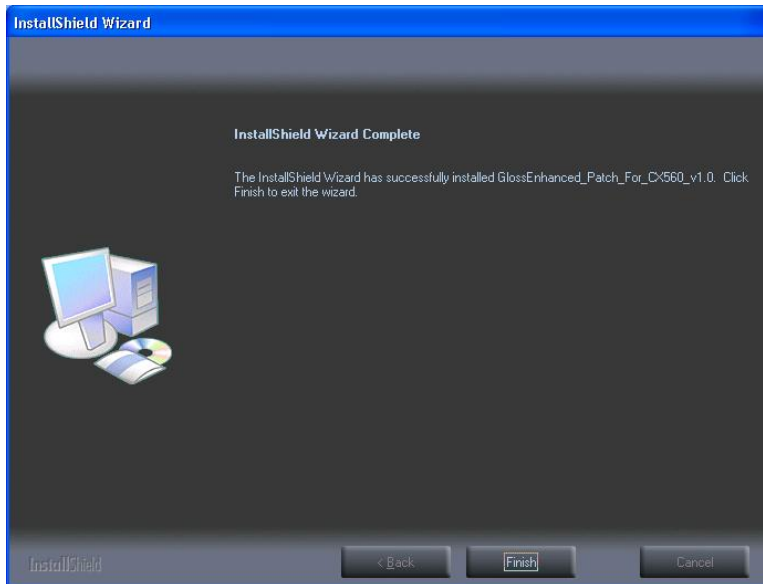
Update_1.2_For_CX560_v1.0 and **DRUM_Patch_For_CX560_v1.0** must already be installed on the CX print server before you install the **Gloss_Enhanced** patch. To verify that the **Update_1.2_For_CX560_v1.0** and **DRUM_Patch_For_CX560_v1.0** are already installed, perform the following actions:

1. From the **Help** menu, select **About**.
2. In the **Updates** box, make sure that **Update_1.2_For_CX560_v1.0 1-Oct-2010** and **DRUM_Patch_For_CX560_v1.0 5-Oct-2010** appears. If not, you need to download the patches from Xerox.com before installing the **Gloss_Enhanced** patch. If they are installed, proceed to Installing the patch.



Installing the patch

1. In the CX print server workspace, from the **File** menu, select **Exit**.
2. Download and save the **GlossEnhanced_Patch_For_CX560_v1.0.exe** file to any location.
3. On the CX print server, locate and then double-click the **GlossEnhanced_Patch_For_CX560_v1.0.exe** file.
4. When the installation is completed, click **Finish**



5. Start the CX print server software.
6. To verify that the **GlossEnhanced_Patch_For_CX560_v1.0** is installed, perform the following actions:
 - a. From the **Help** menu, select **About**.

- b. In the **Updates** box, make sure that **GlossEnhanced_Patch_For_CX560_v1.0 8_Nov-2010** appears.



About Print On-Demand Solutions Group

The Print On-Demand Solutions Group develops high-performance CREO Color Servers and workflow solutions for a wide range of digital production printers and presses. CREO Color Servers offer the digital printing industry leading workflow connectivity solutions. They utilize intelligent, JDF-enabled automation of all print-production steps to help drive business performance and profit.

This independent unit of Eastman Kodak Company continues to unlock the power of print on-demand to maximize customers' success in digital printing and workflow solutions.

For more information about CREO Color Servers, visit <http://www.creoservers.com>.

Kodak, 2010. All rights reserved. Creo is a trademark of Eastman Kodak Company. Adobe, Acrobat, Adobe Illustrator, Distiller, Photoshop, PostScript, and PageMaker are trademarks of Adobe Systems Incorporated. Apple, AppleShare, AppleTalk, iMac, ImageWriter, LaserWriter, Mac OS, Power Macintosh, and TrueType are registered trademarks of Apple Computer, Inc. Macintosh is a trademark of Apple Computer, Inc., registered in the U.S.A. and other countries. PANTONE, Hexachrome, PANTONE Goe, PANTONE Hexachrome, and PANTONE MATCHING SYSTEM are the property of Pantone, Inc. PEARL, PEARLsetter, PEARLhdp, PEARLdry, and PEARLgold are registered trademarks of Presstek, Inc. Technical data subject to change without notice.