

Xerox[®] V4 Print Drivers & Applications Overview

Customer Tip


© 2020 Xerox Corporation. All rights reserved. Xerox®, VersaLink®, AltaLink® and WorkCentre® are trademarks of Xerox Corporation in the United States and/or other countries. Other company trademarks are also acknowledged. BR32522


Document Version: 3 (November 2020).

Preface


Xerox offers 3 different print drivers which will run on a Windows 8, 8.1 and 10 clients


- Class Drivers are V4 drivers which are embedded in the Windows operating systems. These drivers offer limited functionality and rely on the Microsoft User Interface (UI). They do not have the Xerox® UI look and feel. These drivers can be identified by the words 'Class Driver' in their name.

 Xerox A4 Office PS Class Driver V1.2

 Xerox A4 Office PS Color Class Driver V1.2

- Xerox® V4 Print Drivers is one of three components required to get full functionality when printing through the Microsoft's V4 print architecture. The other two components are the Xerox® Desktop Print Experience App and the Xerox® Print and Scan Experience App (store app) These drivers can be identified by the V4 notation in their name.

 Xerox WorkCentre 6605N V4 PS

 Xerox WorkCentre 6655 V4 PS

- Xerox® V3 Print Drivers are based on the older Microsoft v3 print architecture. These drivers can be installed on earlier Microsoft operating systems (Windows 7) and continue to be supported in the latest Microsoft operating systems as well. The Xerox® V3 Print Drivers offer full print features when printing from Windows applications (such as Microsoft Word) but not from Windows Store apps (such as Photos).

If you would like detailed information about the V3 and V4 print architectures, please refer to the following Microsoft article: [Print and Document Services Architecture](#)

Contents

Preface	i
Print Queue Creation, Print Queue Removal and Print Driver Removal	1
Perquisites	1
Print Queue Creation	1
Deleting a Print Queue	2
Deleting a Print Driver	2
Xerox® Desktop Print Experience App.....	4
Prerequisites	4
Installation	4
Printer Properties	4
Device Status	5
Driver UI for Desktop Applications	5
Uninstall	6
Xerox® Print and Scan Experience App Overview.....	7
Prerequisites	7
Installation	7
Uninstall	7
Xerox® Print and Scan Experience App.....	8
Home Screen	8
Install Printers	9
Device	9
Print	10
Scan	11
Share a Photo	11
Scan Receipts	12
Scan a Document.....	13
Build Job	14
Xerox® Driver User Interface (UI) for Windows Store Applications	15

Print Queue Creation, Print Queue Removal and Print Driver Removal

Xerox offers the Xerox® Smart Start Software installer which walks a user or admin through installing the print driver, creating a print queue, installing the desktop application. This is the recommended method for installing Xerox® Print and Scan drivers. Please refer to [Xerox® Smart Start Software Customer Tip](#) for additional information.

Alternatively, you can manually install the Xerox® Print Drivers and associated applications. This section discusses how to manually create a print queue on a Windows 8, 8.1 or Windows 10 client. It then covers how to remove the print queue and how to delete the Xerox® Print Driver. These steps can be followed for either v3 or v4 print drivers.

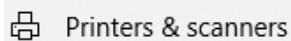
Prerequisites

- Administrator rights will be needed to accomplish some of the steps within this document.
- The print driver files must be downloaded and placed in a location accessible from the workstation in which the print driver will be installed.
- The print drivers are downloaded as a .zip package and must be unzipped before installing them.

Print Queue Creation

1. Select Settings – Devices – Printers and Scanners from the Start screen.

Note: If Settings is not listed in the Start Window search for Printers and Scanners.



2. Select [Add a printer or scanner]

Add printers & scanners



Searching for printers and scanners



The printer that I want isn't listed

3. Select [The printer that I want isn't listed]
4. Select 'Add a printer using a TCP/IP address or hostname' and select [Next]
5. From the 'Device Type' pull-down select 'TCP/IP Device'.
6. Within the 'Type a printer hostname or IP address' window enter the 'Hostname or IP Address' of the printer.

Note: The 'Port name' will mirror the IP address or Hostname. You may change the Port name in this step to something you can easily identify.

7. Ensure that the 'Query the printer and automatically select the driver to use' checkbox is not selected and select [Next].
8. Select [Have Disk...] and browse to the location where the print driver files were saved. If the desired driver appears in the operating system list, skip step 9.
9. Select the print driver then select [Open] and then [OK].
10. In the 'Install the printer driver' window choose the desired printer model and select [Next].
11. Within the 'Type a printer name' window you can manually enter a printer name or accept the default provided. Selecting [Next] starts the print driver installation.
12. In the 'Printer Sharing' window choose to either share the printer or not and select [Next].
13. Select [Finish]

You'll notice that the printer is now included in the 'Devices and Printers' section within the Control Panel.

Printers & scanners



Note: A user can print with just the V4 print driver installed however the feature set is limited. In order to get full print functionality with the v4 print architecture a user/admin must install the **Xerox® Desktop Print Experience App** as well as the **Xerox® Print and Scan Experience App** store application.

Deleting a Print Queue

Important: All printers using the desired print driver need to be removed before removing the print driver

1. Select Settings – Devices – Printers and Scanners from the Start screen.

Note: If Settings is not listed in the Start Window search for Printers and Scanners.

2. Find the device you would like to uninstall and select [Remove device].



3. Select [Yes] when asked "Are you sure you want to remove this device?"

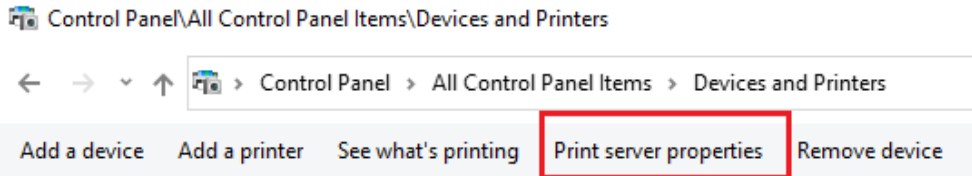
The device will disappear from the Printers and Scanners dialog.

Deleting a Print Driver

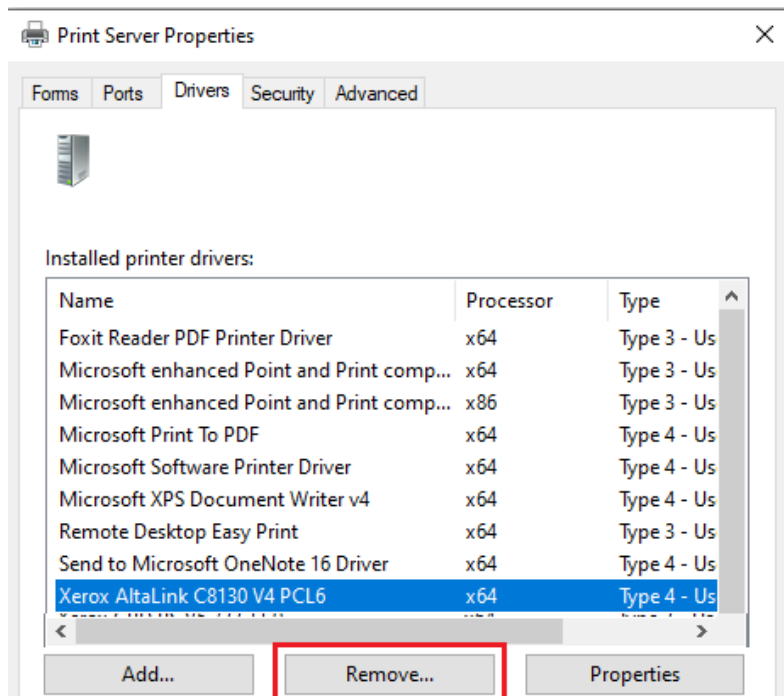
Important: Administrator rights are required to delete a print driver.

1. Stop and Restart the print spooler.

- a. Open a Command prompt as administrator (If 'Run' is not listed on the start menu then search 'Run' and then type in 'cmd')
- b. Type 'net stop spooler' and then select Enter.
- c. Once the spooler is stopped type 'net start spooler' and select Enter.
2. Go to 'Control Panel' and select 'Devices and Printers'.
3. Within the Devices and Printers window select a printer and select "Print server properties."



4. Select the print driver you want to delete and select 'Remove'.



5. Select 'Remove driver only' and select OK
 6. Click [Yes] when asked to confirm you want to delete the driver.
- You have successfully uninstalled the printer and the print driver.

Xerox® Desktop Print Experience App

The Xerox® Desktop Print Experience App provides the ability to select additional features when utilizing the V4 architecture to print from the desktop.

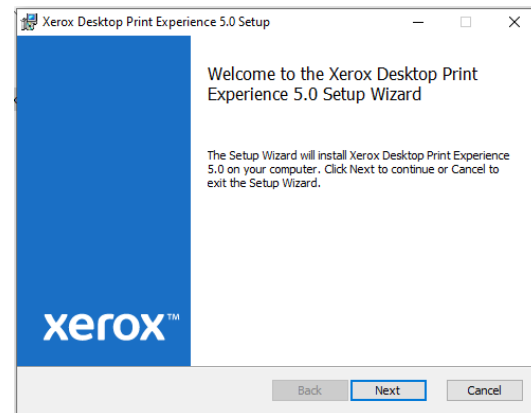
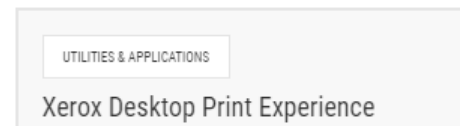
Note: A user can print without this application installed, however, the feature set is limited.

Prerequisites

- A printer using the Xerox® V4 Print Driver needs to be installed prior to installing Xerox® Desktop Print Experience App.
- Administrator rights may be needed to accomplish some of the steps within this procedure.

Installation

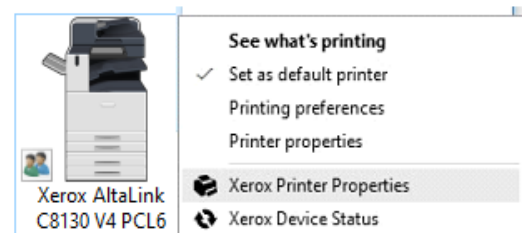
1. Download the application from <http://www.support.xerox.com/> and place it in a location accessible from the workstation.
 - a. The Xerox® Desktop Print Experience App is located within Utilities & Applications of a supported Xerox® Printer.
2. Browse to the directory where you saved the application and run the msi file.
 - 'XrxSetup_(6 or 7).xx.yy.zz_x86.msi' - for 32-bit operating systems
 - 'XrxSetup_(6 or 7).xx.yy.zz_x64.msi' - for 64-bit operating systems
3. Select [Next] from the "Welcome" screen.
4. Read the 'License Agreement' and if you agree, select the License Agreement check box.
5. Select [Next]
6. Select [Next] on the Destination Folder screen
7. Select Install, which will install the Xerox® Print Experience App.
8. Select Finish.



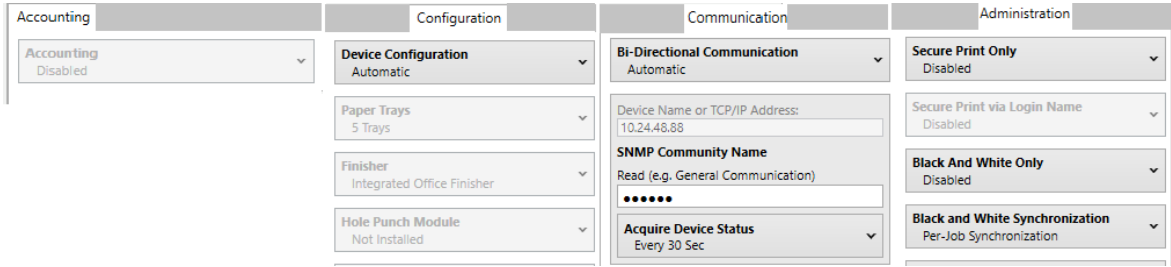
Printer Properties


Note: Options and device image will vary based on the device the queue is configured for.

1. Once the Xerox® Desktop Print Experience App has finished installing. Go to 'Control Panel' and select 'Devices and Printers'.
2. Right click on the printer previously installed and select 'Xerox Printer Properties'.
3. The printer's properties will open. This is where an admin can configure:
 - Accounting



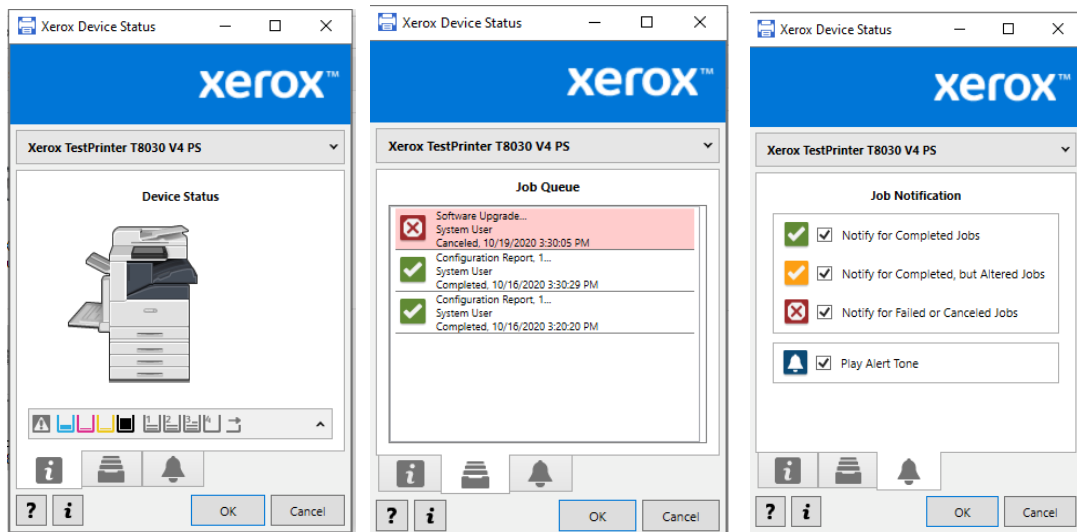
- Device Settings (Tray, Finisher, etc.)
- Communication (Bi-Directional)
- Administration features (Secure Print Only, Black and White Only, etc.)



4. Selecting the Synchronization button  will force the print experience application and the printer to communicate. The application will automatically configure the print queue and based on the information supplied by the printer.
5. Select [OK] to close the printer properties window.

Device Status

1. Select 'Xerox Device Status'. This will open the device status for the printer. Here a user can check the device status, the job queue and can disable notifications.
2. Select [OK] to exit out of the device status window.



Driver UI for Desktop Applications

Selecting Printer Properties within an application, like Microsoft Word, will open the Xerox® Print Driver user interface (UI).



Within the driver UI a user can:

- Configure common printing features: 2 Side Print, Finishing, Image options, Document options, etc.
- Create Presets (One Touch)
- Get a Device Status (including toner level and paper tray status)
- See a Job Summary

- See what is in the print queue
- Configure Earth Smart



Uninstall

1. Select 'Control Panel' from the start screen. If it is not listed perform a search for 'Control Panel'.
2. Select  Programs and Features
3. Select  Xerox Desktop Print Experience
4. Select Uninstall.
5. Select Yes to the "Are you sure you want to uninstall..." question.

You have successfully uninstalled the Xerox® Desktop Print Experience App.

Xerox® Print and Scan Experience App Overview

This application provides the ability to select additional features when utilizing the v4 architecture to print from Windows Store Applications. The Xerox® Print and Scan Experience App is only available through the Microsoft (Windows App) Store. The Xerox® Print and Scan Experience App will only run on Windows 10 v1803 and newer operating systems

Note: A user can print without this application installed however, the feature set is limited.

Prerequisites

- Access to the Microsoft Store is required to download this Application. Work with your System Administrator to gain access to the Store/Internet.
- You may need to enter valid Microsoft Account information to complete the install of the application.
- A printer using the Xerox® V4 Print Driver needs to be installed prior to installing the Xerox® Print and Scan Experience App.
- Administrator rights may be needed to accomplish some of the steps within this procedure.

Installation

Note: The application may automatically install after installing the Xerox® V4 Print Driver.

1. Select the Microsoft® Store icon from the Start Screen or search for Store.
2. Within the Microsoft® Store search for 'Xerox'.
3. Select the Xerox® Print and Scan Experience App.
4. Select Install, the application will download with no further information required.

When the install is complete the store will display "You own this app" or "Product is Installed."

Note: If you receive an error message when attempting to download the application, please contact Microsoft Support.

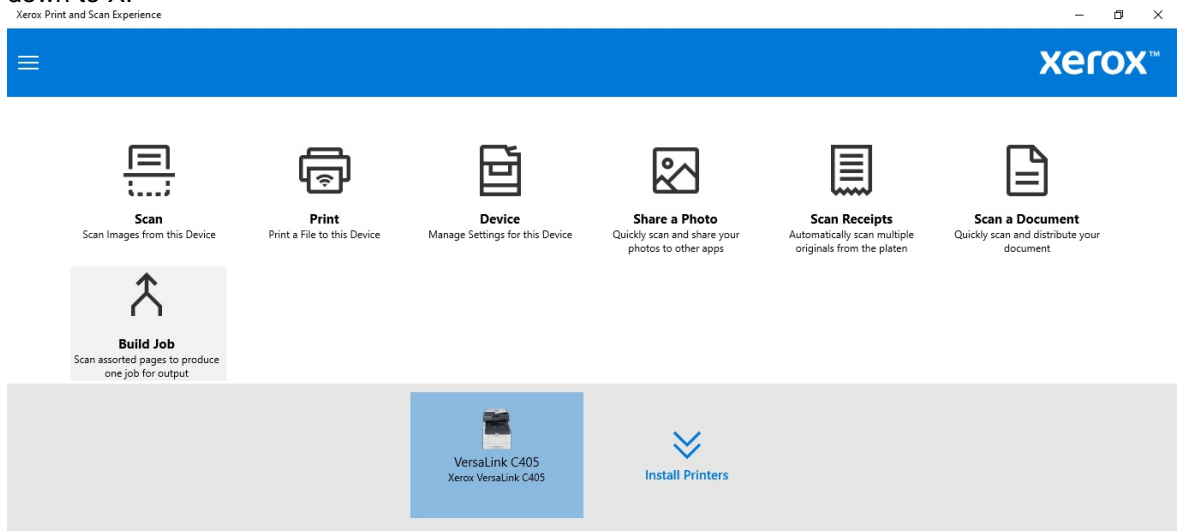
Uninstall

1. From the Start screen scroll down to Xerox® Print and Scan Experience App, right click on it.
 2. Select 'Uninstall'.
 3. Select 'Uninstall' when you are presented with a confirmation dialog.
- You have successfully uninstalled Xerox® Print and Scan Experience App.

Xerox® Print and Scan Experience App

Home Screen

1. Once the Xerox® Print and Scan Experience App has finished installing, select Start and scroll down to X.

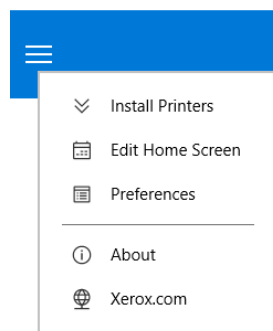


2. Select Xerox® Print and Scan Experience App to open the application. In this dialog a user can:

- Install a New Printer
- Print a PDF file to this Device – this option is available and will be displayed for a subset of supported devices.
- Manage Settings for this Device
- Scan images from this Device*
- Share a Photo*
- Scan Receipts*
- Scan a Document*
- Build Job*

* These scan features are available and will be displayed for a subset of supported devices.

3. Select the Menu bar in the upper left corner. From this menu a user or admin can Install Printers, edit what features appear on the home screen and modify Alert Notifications (found under Preferences.)



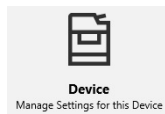
Install Printers



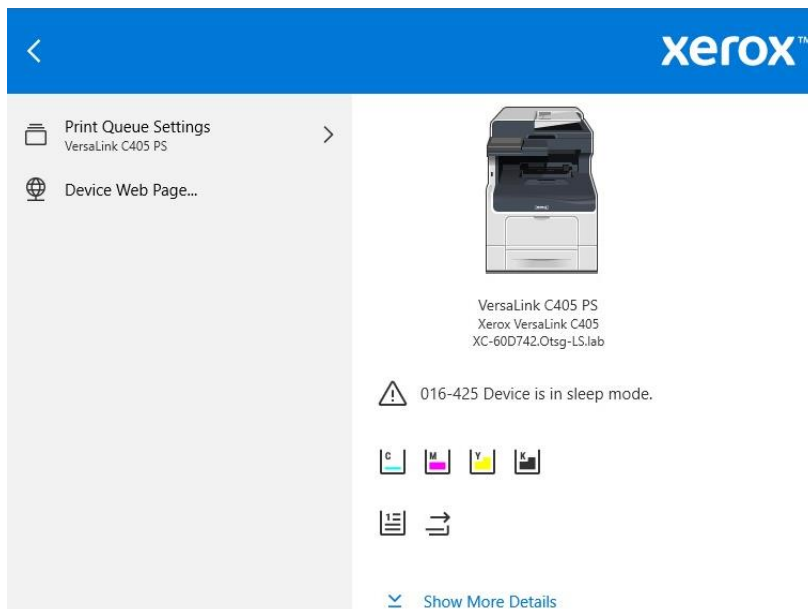
This feature will launch the Xerox® Smart Start Software installer, from there a user or an admin can install additional V4 print drivers and create print queues. If the user or admin would like to install V3 print drivers or the scan driver, they should run Xerox® Smart Start Software installer from xerox.com.

Note: This feature requires access to the Internet. Please make sure xerox.com is not blocked.

Device

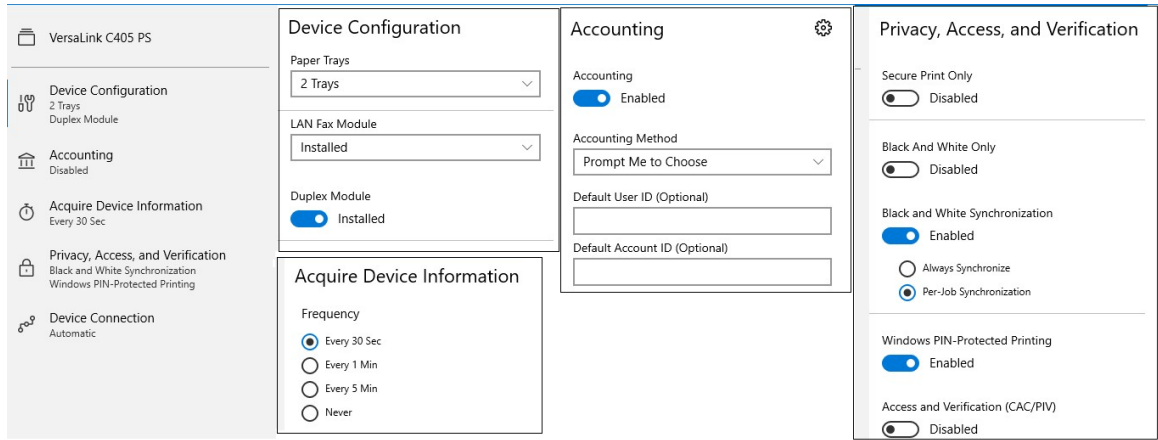


This feature allows a user or admin to manage settings for a specific device. A user or admin can see toner status, paper tray status and the job queue. To see paper tray status and the job queue select Show More Details.



A user or admin can also:

- Modify the device's configuration (such as set Number of Paper Trays, enable LAN Fax, etc.)
- Configure Accounting
- Set a polling time to acquire device information
- Configure Administration type settings (such as Secure Print Only, Black and White Only, etc.)
- Configure Bi-Directional Communication



Print



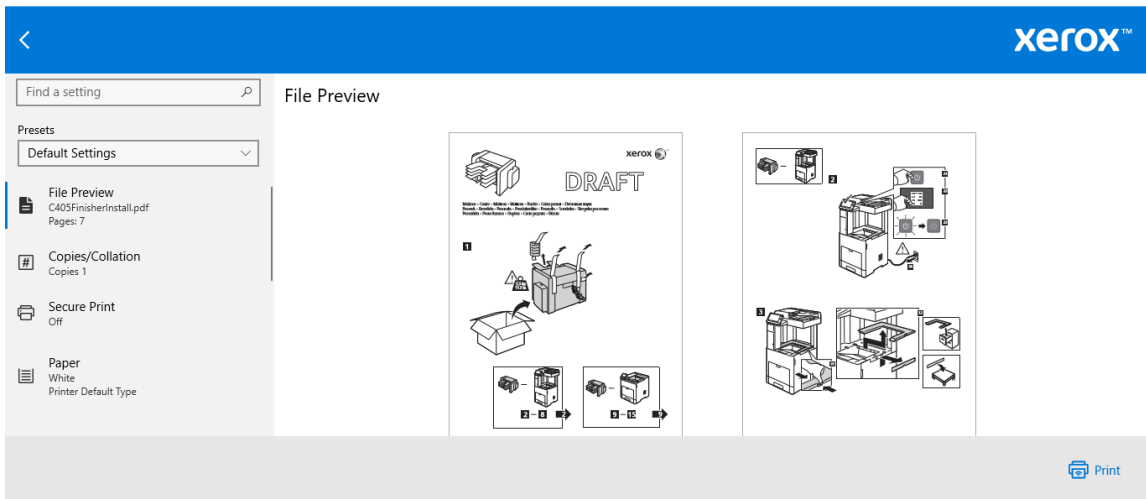
Print

Print a File to this Device

This feature allows a user to print .pdf files to a desired printer by going through the Xerox® Print and Scan Experience App. The same functionality is available by right clicking on a pdf file and selecting 'Xerox Direct PDF Printing'.



1. Select the Print button
2. Browse for the desired .pdf file (this can be locally or on the network) and select Open.
3. A print dialog will open. Within the dialog a user will:
4. See a preview of the document
5. Will be able to select print features (such as Copies, Job Type, Paper type, etc.)
6. Select Print to submit the job
7. If notifications are enabled a notification will appear, notifying the user when that the job was submitted and when it is completed.

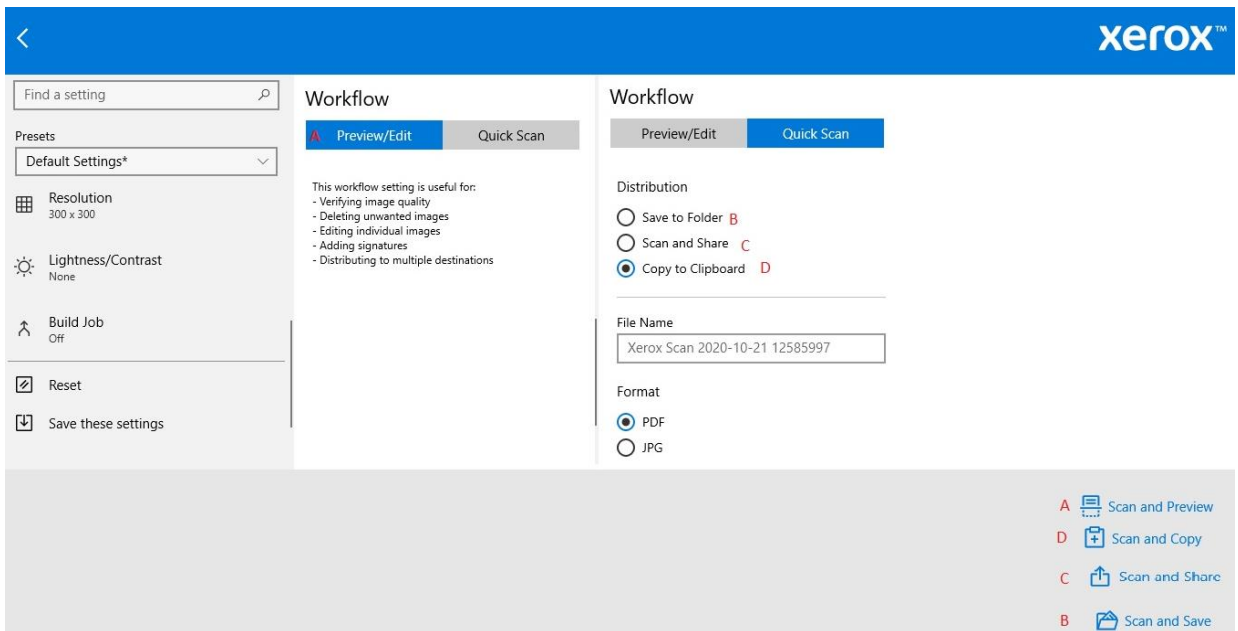


Scan

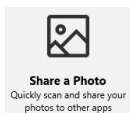


This feature allows a user to scan documents from a specific device. A user can:

- Configure various scanning features (such as Color, Resolution, Original Size.)
- Scan, Preview and Edit (such as crop, straighten, rotate, delete pages) the document.
- Perform a Quick Scan
- Select a file format to save the scan
- How to distribute the scan (Save to a Folder, Scan and Share, Copy to Clipboard)

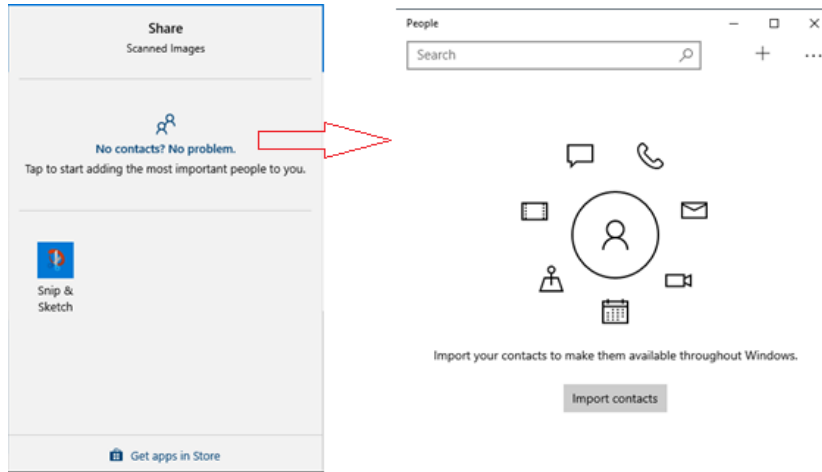


Share a Photo

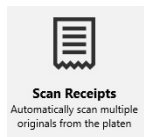


This feature allows a user to scan a document, from a specific device and share that document.

1. Select Share a Photo.
2. This will start the scanning process on the selected device.
3. Once the images are processed a Share dialog opens.
4. From here the user can select to share to a set of contacts or to share via an app. This dialog also allows you to add contacts or download apps.



Scan Receipts



This feature allows a user to scan in receipts from a specific Xerox® Device. The application auto crops the scans and saves each receipt as a separate image.

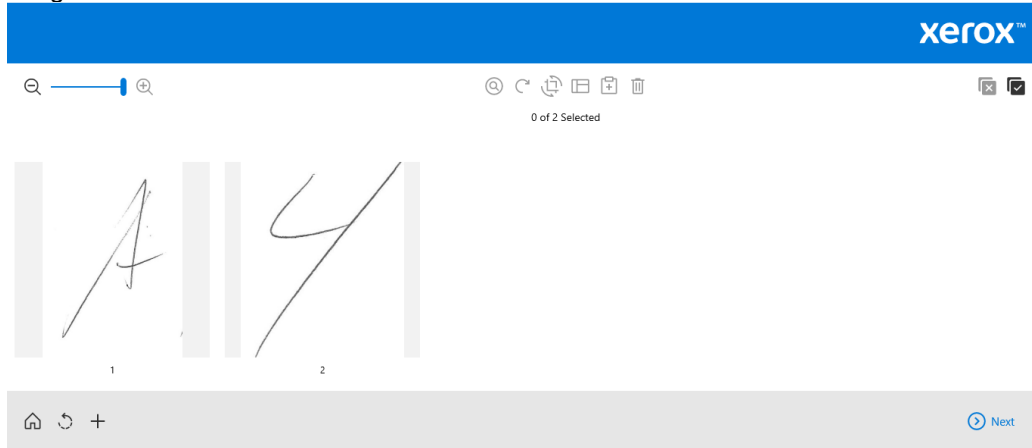
- Prerequisites - This feature assumes the user has placed multiple receipts on the device platen to scan all at one time.

1. Select Scan Receipts.
2. This will start the scanning process on the selected device.
3. Once the images are processed an image editor opens, displaying each receipt in its own auto-cropped outline.
4. If the results are not as desired, adjust the “Auto Crop Sensitivity” or manually edit the image using the provided scan features (such as Crop, Auto Straighten, Rotate, etc.)



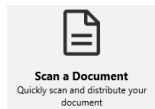
5. Once all the images are modified select Done.
6. This will open a new dialog where the user determines what they want to do with the scanned images.

7. Select the images that you want processed. Select <shift> allows you to select multiple images.



8. Select Next.
9. The next dialog allows the user to select whether they want to Save the file, Share the file or Copy the file to the clipboard. The user can also select which file format they want the image saved as well as give it a custom name.

Scan a Document



This feature allows a user to scan a document from a specific Xerox® Device. A user can edit the document and then select how they want to save it.

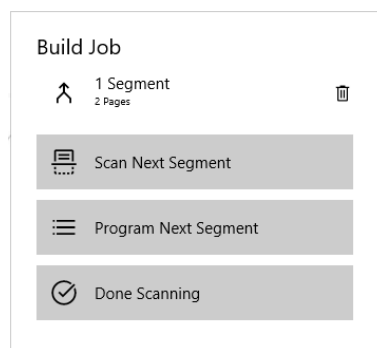
1. Select Scan a Document.
2. This will start the scanning process on the selected device.
3. Once the images are processed an image editor opens.
4. From here the user can select to edit the scanned images using Scan features (such as Crop, Auto Straighten, Rotate, etc.)
5. Once all the images are modified select Done.
6. This will open a new dialog where the user determines what they want to do with the scanned images.
7. Select the images that you want processed. Select <shift> allows you to select multiple images.
8. Select Next.
9. The next dialog allows the user to select whether they want to Save the file, Share the file or Copy the file to the clipboard. The user can also select which file format they want the image saved as well as give it a custom name.

Build Job



This feature allows a user to scan multiple segments with different attributes to create one larger document.

1. Select Build Job.
2. This will start the scanning process on the selected device.
3. Once the images are processed an image editor opens.
4. From here the user can select to edit the scanned images using Scan features (such as Crop, Auto Straighten, Rotate, etc.)
5. Once all the images are modified select Done.
6. A new dialog appears to allow the user to Scan Next Segment, Program Next Segment or Done Scanning.
7. Selecting Scan Next Segment automatically starts the scan process again.
8. Selecting Program Next Segment opens a new dialog where a user can select Scan features (such as Resolution, 2-sided scanning, rotation, cropping, etc.) that will be applied to the next set of scans.



9. Once all the images are scanned select Done Scanning.
10. This will open a new dialog where the user determines what they want to do with the scanned images. Select the images that you want processed. Select <shift> allows you to select multiple images.
11. Select Next.
12. The next dialog allows the user to select whether they want to Save the file, Share the file or Copy the file to the clipboard. The user can also select which file format they want the image saved as well as give it a custom name.

Xerox® Driver User Interface (UI) for Windows Store Applications

Selecting Printer Properties within a Windows Store Application, like Photos, will open the Xerox® Print Driver UI. This dialog appears when selecting More Settings.



Within the driver UI a user can:

- Will be able to select print features (such as Copies, Job Type, Paper type, etc.)
- Create Presets
- Get Device (such as toner supply, device errors, paper tray status, etc.)
- Search for print features not displayed on the screen

