

Fiery EX210I for Xerox 210I

USER SOFTWARE INSTALLATION GUIDE



About the Documentation

This manual is part of a set of Fiery EX2101 for Xerox 2101™ documentation that includes the following manuals for users and system administrators:

- The *Quick Start Guide* summarizes the steps for configuring the Fiery EX2101 for Xerox 2101 and printing. It also describes how to access the Adobe Acrobat PDF files on the User Documentation CD.
- The *User Software Installation Guide* describes how to install software from the User Software CD to enable users to print to the Fiery EX2101 for Xerox 2101, and also describes setting up printing connections to the Fiery EX2101 for Xerox 2101.
- The *Configuration Guide* explains basic configuration and administration of the Fiery EX2101 for Xerox 2101 for the supported platforms and network environments. It also includes guidelines for setting up UNIX, Windows NT 4.0/2000/2003, and Novell NetWare servers to provide printing services to users.
- The *Printing Guide* describes the printing features of the Fiery EX2101 for Xerox 2101 for users who send jobs from their computers.
- The *Job Management Guide* explains the functions of the job management utilities, including Command WorkStation™, Command WorkStation LE™, and DocBuilder Pro™, and how you can use them to monitor and control jobs on the Fiery EX2101 for Xerox 2101. This manual is intended for an operator or administrator, or a user with the necessary access privileges, who monitors and manages job flow and troubleshoots problems that may arise.
- *Customer Release Notes* provide last-minute product information and workarounds for some of the problems you may encounter.

Copyright © 2003 Electronics for Imaging, Inc. All rights reserved.

This publication is protected by copyright, and all rights are reserved. No part of it may be reproduced or transmitted in any form or by any means for any purpose without express prior written consent from Electronics for Imaging, Inc. Information in this document is subject to change without notice and does not represent a commitment on the part of Electronics for Imaging, Inc.

This publication is provided in conjunction with an EFI product (the "Product") which contains EFI software (the "Software"). The Software is furnished under license and may only be used or copied in accordance with the terms of the Software license set forth below.

The Product may be covered by one or more of the following U.S. Patents: 4,917,488, 4,941,038, 5,109,241, 5,150,454, 5,150,454, 5,170,182, 5,212,546, 5,278,599, 5,335,040, 5,343,311, 5,424,754, 5,467,446, 5,506,946, 5,517,334, 5,537,516, 5,543,940, 5,553,200, 5,565,960, 5,615,314, 5,619,624, 5,625,712, 5,640,228, 5,666,436, 5,760,913, 5,818,645, 5,835,788, 5,866,856, 5,867,179, 5,959,867, 5,970,174, 5,995,724, 6,002,795, 6,025,922, 6,041,200, 6,046,420, 6,065,041, 6,067,080, 6,112,665, 6,116,707, 6,118,205, 6,122,407, 6,134,018, 6,141,120, 6,151,014, 6,166,821, 6,184,873, 6,185,335, 6,201,614, 6,215,562, 6,219,659, 6,222,641, 6,224,048, 6,225,974, 6,226,419, 6,239,895, 6,256,108, 6,265,676, 6,266,051, 6,269,190, 6,289,122, 6,292,177, 6,292,270, 6,300,580, 6,310,697, 6,323,893, 6,326,565, 6,327,047, 6,327,050, 6,327,052, 6,330,071, 6,331,899, 6,335,723, 6,340,975, 6,341,017, 6,341,018, 6,341,307, 6,348,978, 6,356,359, 6,369,895, 6,373,003, 6,381,036, 6,400,443, 6,414,673, 6,424,340, 6,429,949, 6,449,393, 6,456,280, 6,476,927, 6,490,696, 6,501,461, 6,501,565, 6,519,053, D341,131, D406,117, D416,550, D417,864, D419,185, D426,206, D430,206, D439,851, D444,793, RE33,973, RE36,947

Trademarks

Bestcolor, ColorWise, eBeam, EDOX, EFI, Fiery, the Fiery logo, Fiery Driven, RIP-While-Print, and Spot-On are registered trademarks of Electronics for Imaging, Inc. in the U.S. Patent and Trademark Office and/or certain other foreign jurisdictions.

The Best logo, the eBeam logo, the Electronics for Imaging logo, the Fiery Driven logo, the Intelligent Device Management logo, the PrintMe logo, the Splash logo, the Unimobile logo, the Velocity OneFlow logo, Everywhere You Go, Changing the Way the World Prints, AutoCal, AutoGray, Best, ColorCal, Command WorkStation, Device IQ, DocBuilder, DocBuilder Pro, DocStream, FreeForm, Fiery Link, Fiery Prints, Fiery Spark, NetWise, PrintMe, PrintMe Enterprise, PrintMe Networks, RIPChips, ScanBuilder, Splash, Unimobile, Velocity, Velocity Balance, Velocity Build, Velocity Estimate, Velocity Exchange, Velocity OneFlow, Velocity Scan, VisualCal, WebInstaller, WebScan, WebSpooler, WebStatus, and WebTools are trademarks of Electronics for Imaging, Inc.

All other terms and product names may be trademarks or registered trademarks of their respective owners, and are hereby acknowledged.

Legal Notices

APPLE COMPUTER, INC. ("APPLE") MAKES NO WARRANTIES, EXPRESS OR IMPLIED, INCLUDING WITHOUT LIMITATION THE IMPLIED WARRANTIES OF MERCHANTABILITY AND FITNESS FOR A PARTICULAR PURPOSE, REGARDING THE APPLE SOFTWARE. APPLE DOES NOT WARRANT, GUARANTEE, OR MAKE ANY REPRESENTATIONS REGARDING THE USE OR THE RESULTS OF THE USE OF THE APPLE SOFTWARE IN TERMS OF ITS CORRECTNESS, ACCURACY, RELIABILITY, CURRENTNESS, OR OTHERWISE. THE ENTIRE RISK AS TO THE RESULTS AND PERFORMANCE OF THE APPLE SOFTWARE IS ASSUMED BY YOU. THE EXCLUSION OF IMPLIED WARRANTIES IS NOT PERMITTED BY SOME STATES. THE ABOVE EXCLUSION MAY NOT APPLY TO YOU.

IN NO EVENT WILL APPLE, ITS DIRECTORS, OFFICERS, EMPLOYEES OR AGENTS BE LIABLE TO YOU FOR ANY CONSEQUENTIAL, INCIDENTAL OR INDIRECT DAMAGES (INCLUDING DAMAGES FOR LOSS OF BUSINESS PROFITS, BUSINESS INTERRUPTION, LOSS OF BUSINESS INFORMATION, AND THE LIKE) ARISING OUT OF THE USE OR INABILITY TO USE THE APPLE SOFTWARE EVEN IF APPLE HAS BEEN ADVISED OF THE POSSIBILITY OF SUCH DAMAGES. BECAUSE SOME STATES DO NOT ALLOW THE EXCLUSION OR LIMITATION OF LIABILITY FOR CONSEQUENTIAL OR INCIDENTAL DAMAGES, THE ABOVE LIMITATIONS MAY NOT APPLY TO YOU. Apple's liability to you for actual damages from any cause whatsoever, and regardless of the form of the action (whether in contract, tort [including negligence], product liability or otherwise), will be limited to \$50.

PANTONE® Colors displayed in the software application or in the user documentation may not match PANTONE-identified standards. Consult current PANTONE Color Publications for accurate color. PANTONE® and other Pantone, Inc. trademarks are the property of Pantone, Inc. © Pantone, Inc., 2003.

Pantone, Inc. is the copyright owner of color data and/or software which are licensed to Electronics for Imaging, Inc., to distribute for use only in combination with the products, or software of Electronics for Imaging, Inc. PANTONE Color Data and/or Software shall not be copied onto another disk or into memory except as part of the delivery of the Electronics for Imaging, Inc., products or software.

This product includes software developed by the Apache Software Foundation (<http://www.apache.org/>).

FCC Information

WARNING: FCC Regulations state that any unauthorized changes or modifications to this equipment not expressly approved by the manufacturer could void the user's authority to operate this equipment.

Class B Declaration of Conformity

This equipment has been tested and found to comply with the limits for a class B digital device, pursuant to Part 15 of the FCC rules. These limits are designed to provide reasonable protection against harmful interference in a residential installation. This equipment generates, uses and can radiate radio frequency energy and if not installed and used in accordance with the instructions, may cause harmful interference to radio communications. However, there is no guarantee that interference will not occur in a particular installation.

If this equipment does cause harmful interference to radio or television reception, which can be determined by turning the equipment off and on, the user is encouraged to try to correct the interference by one or more of the following measures:

Reorient or relocate the receiving antenna.

Increase the separation between the equipment and receiver.

Connect the equipment into an outlet on a circuit different from that to which the receiver is connected.

Consult the dealer or an experienced radio/TV technician for help.

In order to maintain compliance with FCC regulations, shielded cables must be used with this equipment. Operation with non-approved equipment or unshielded cables is likely to result in interference to radio and TV reception. The user is cautioned that changes and modifications made to the equipment without the approval of manufacturer could void the user's authority to operate this equipment.

Industry Canada Class B Notice

This Class B digital apparatus complies with Canadian ICES-003.

Avis de Conformation Classe B de l'Industrie Canada

Cet appareil numérique de la Classe B est conforme à la norme NMB-003 du Canada.

RFI Compliance Notice

This equipment has been tested concerning compliance with the relevant RFI protection requirements both individually and on system level (to simulate normal operation conditions). However, it is possible that these RFI Requirements are not met under certain unfavorable conditions in other installations. It is the user who is responsible for compliance of his particular installation.

Dieses Gerät wurde sowohl einzeln als auch in einer Anlage, die einen normalen Anwendungsfall nachbildet, auf die Einhaltung der Funkentstörbestimmungen geprüft. Es ist jedoch möglich, dass die Funkentstörbestimmungen unter ungünstigen Umständen bei anderen Gerätekombinationen nicht eingehalten werden. Für die Einhaltung der Funkentstörbestimmungen einer gesamten Anlage, in der dieses Gerät betrieben wird, ist der Betreiber verantwortlich.

Compliance with applicable regulations depends on the use of shielded cables. It is the user who is responsible for procuring the appropriate cables.

Die Einhaltung zutreffender Bestimmungen hängt davon ab, dass geschirmte Ausführungen benutzt werden. Für die Beschaffung richtiger Ausführungen ist der Betreiber verantwortlich.

Software License Agreement

YOU SHOULD CAREFULLY READ THE FOLLOWING TERMS AND CONDITIONS BEFORE USING THIS SOFTWARE. IF YOU DO NOT AGREE TO THE TERMS AND CONDITIONS OF THIS AGREEMENT, DO NOT USE THE SOFTWARE. INSTALLING OR USING THE SOFTWARE INDICATES THAT YOU AGREE TO AND ACCEPT THE TERMS OF THIS AGREEMENT. IF YOU DO NOT AGREE TO ACCEPT THE TERMS OF THIS AGREEMENT YOU MAY RETURN THE UNUSED SOFTWARE FOR A FULL REFUND TO THE PLACE OF PURCHASE.

License

EFI grants you a non-exclusive license to use the Software and accompanying documentation ("Documentation") included with the Product. The Software is licensed, not sold. You may use the Software solely for your own customary business or personal purposes. You may not rent, lease, sublicense or lend the Software or use the Software in any time sharing, service bureau, or similar arrangement.

You may not make or have made, or permit to be made, any copies of the Software or portions thereof, except one (1) copy for backup or archive purposes in support of your use of the Software as permitted hereunder. You may not copy the Documentation. You may not attempt to localize, translate, disassemble, decompile, decrypt, reverse engineer, discover the source code of, modify, create derivative works of, or in any way change any part of the Software.

The terms, conditions, and restrictions in the License Agreement apply to all bug fixes, patches, releases, release notes, updates, and upgrades related to the Software.

Proprietary Rights

You acknowledge and agree that all rights, title and interest, including all intellectual property rights, in and relating to the Software, Documentation and all modifications and derivative works thereof are solely owned by and shall remain with EFI and its suppliers. Except for the express limited license granted above to use the Software, no right or license of any kind is granted. You receive no rights or license under any patents, copyrights, trade secrets, or trademarks (whether registered or unregistered). You agree not to adopt, register, or attempt to register any EFI trademark or trade name ("EFI Mark") or any confusingly similar mark, URL, internet domain name, or symbol as your own name or the name of your affiliates or products, and not to take any other action which impairs or reduces the trademark rights of EFI or its suppliers.

Confidentiality

The Software is confidential, proprietary information of EFI and you may not distribute or disclose the Software. You may, however, permanently transfer all of your rights under this Agreement to another person or legal entity provided that: (1) such a transfer is authorized under all applicable export laws and regulations, including the U.S. Export Administration Regulations, (2) you transfer to the person or entity all of the Software and Documentation (including all copies, updates, upgrades, prior versions, component parts, the media and printed materials, and this Agreement); (3) you retain no copies of the Software and Documentation, including copies stored on a computer; and (4) the recipient agrees to the terms and conditions of this Agreement.

Remedies and Termination

Unauthorized use, copying, or disclosure of the Software, or any breach of this Agreement will result in automatic termination of this license and will make available to EFI other legal remedies. In the event of termination, you must destroy all copies of the Software, Documentation, and all component parts thereof. All provisions of this Agreement relating to disclaimers of warranties, limitation of liability, remedies, damages, governing law, jurisdiction, venue, and EFI's proprietary rights shall survive termination.

Limited Warranty and Disclaimer

EFI warrants to the original purchaser ("Customer") for thirty (30) days from the date of original purchase from EFI or its authorized retailer that the Software will perform in substantial conformance to the Documentation when the Product is used as authorized by EFI's specifications. EFI warrants the media containing the Software against failure during the above warranty period. EFI makes no warranty or representation that the Software will meet your specific requirements, that the operation of the Software will be uninterrupted, secure, fault-tolerant, or error free, or that all defects in the Software will be corrected. EFI makes no warranty, implied or otherwise, regarding the performance or reliability of any third party products (software or hardware). THE INSTALLATION OF ANY THIRD PARTY PRODUCTS OTHER THAN AS AUTHORIZED BY EFI WILL VOID THIS WARRANTY. IN ADDITION, USE, MODIFICATION, AND/OR REPAIR OF THE PRODUCT OTHER THAN AS AUTHORIZED BY EFI WILL VOID THIS WARRANTY.

EXCEPT FOR THE ABOVE EXPRESS LIMITED WARRANTY AND TO THE MAXIMUM EXTENT PERMITTED BY APPLICABLE LAW, EFI MAKES AND YOU RECEIVE NO WARRANTIES OR CONDITIONS ON THE SOFTWARE, EXPRESS, IMPLIED, STATUTORY, OR IN ANY OTHER PROVISION OF THIS AGREEMENT OR COMMUNICATION WITH YOU, AND EFI SPECIFICALLY DISCLAIMS ANY IMPLIED WARRANTY OR CONDITION OF MERCHANTABILITY OR FITNESS FOR A PARTICULAR PURPOSE OR NONINFRINGEMENT OF THIRD PARTY RIGHTS.

Limitation of Liability

TO THE MAXIMUM EXTENT PERMITTED BY LAW, EFI AND ITS SUPPLIERS SHALL NOT BE LIABLE FOR ANY DAMAGES, INCLUDING LOSS OF DATA, LOST PROFITS, COST OF COVER OR OTHER SPECIAL, INCIDENTAL, CONSEQUENTIAL OR INDIRECT DAMAGES ARISING FROM THE SALE, INSTALLATION, MAINTENANCE, USE, PERFORMANCE OR FAILURE OF THE SOFTWARE, HOWEVER CAUSED AND ON ANY THEORY OF LIABILITY. THIS LIMITATION WILL APPLY EVEN IF EFI HAS BEEN ADVISED OF THE POSSIBILITY OF SUCH DAMAGE. YOU ACKNOWLEDGE THAT THE PRICE OF THE PRODUCT REFLECTS THIS ALLOCATION OF RISK. BECAUSE SOME JURISDICTIONS DO NOT ALLOW THE EXCLUSION OR LIMITATION OF LIABILITY FOR CONSEQUENTIAL OR INCIDENTAL DAMAGES, THE ABOVE LIMITATION MAY NOT APPLY TO YOU.

You are hereby notified that Adobe Systems Incorporated, a Delaware corporation located at 345 Park Avenue, San Jose, CA 95110-2704 ("Adobe") is a third-party beneficiary to this agreement to the extent that this agreement contains provisions which relate to your use of any software, font programs, typefaces, and/or trademarks licensed or supplied by Adobe. Such provisions are made expressly for the benefit of Adobe and are enforceable by Adobe in addition to EFI. ADOBE WILL HAVE NO LIABILITY WHATSOEVER TO YOU FOR ANY ADOBE SOFTWARE OR TECHNOLOGY LICENSED HEREUNDER.

Export Controls

EFI's Products are subject to U.S. export laws and regulations, including the U.S. Export Administration Regulations, as well as foreign export laws and regulations. You agree that you will not use, distribute, transfer, export, or re-export any portion of the Product or the Software in any form in violation of any applicable laws or regulations of the United States or the country in which you obtained them.

U.S. Government Restricted Rights:

Use, duplication, or disclosure of the Software by the United States Government is subject to restrictions as set forth in FAR 12.212 or DFARS 227.7202-3 - 227.7202-4 and, to the extent required under U.S. federal law, the minimum restricted rights as set out in FAR 52.227-14, Restricted Rights Notice (June 1987) Alternate III(g)(3)(June 1987) or FAR 52.227-19 (June 1987). To the extent any technical data is provided pursuant to the Agreement, such data is protected per FAR 12.211 and DFARS 227.7102-2 and to the extent explicitly required by the U.S. Government, is subject to limited rights as set out in DFARS 252.227.7015 (November 1995) and DFARS 252.227-7037 (September 1999). In the event that any of the above referenced agency regulations are modified or superceded, the subsequent or equivalent regulation shall apply. The name of the Contractor is Electronics for Imaging.

General

The rights and obligations of the parties related to this Agreement will be governed in all respects by the laws of the State of California exclusively, as such laws apply to contracts between California residents performed entirely within California. The United Nations Convention on Contracts for the International Sale of Goods and any other similar convention does not apply to this Agreement. For all disputes related to this Agreement, you consent to the personal and exclusive jurisdiction and venue of the state courts in San Mateo County, California and the federal court for the Northern District of California. This Agreement is the entire agreement held between us and supersedes any other communications or advertising with respect to the Software. If any provision of this Agreement is held invalid, such provision shall be deemed modified to the extent necessary to be enforceable and the other provisions in this Agreement shall continue in full force and effect.

If you have any questions, please see EFI's web site at www.efi.com.

Electronics for Imaging
303 Velocity Way
Foster City, CA 94404

Contents

About the Documentation

Introduction

About this manual	ix
Specifications	x
User software	xi
Fiery WebTools	xiii
System requirements	xiii

Chapter 1: Installing User Software on a Windows Computer

Setting up PostScript or PCL printing with Windows 98/Me	1-1
Installing the PostScript or PCL printer driver for Windows 98/Me	1-2
Configuring installed options	1-3
Completing the Windows 98/Me printer connection	1-6
Setting up PostScript or PCL printing with Windows NT 4.0	1-13
Installing the PostScript or PCL printer driver for Windows NT 4.0	1-13
Configuring installed options	1-15
Completing the Windows NT 4.0 printer connection	1-19
Setting up PostScript or PCL printing with Windows 2000/XP/Server 2003	1-26
Installing the PostScript or PCL printer driver for Windows 2000/XP/Server 2003	1-26
Configuring installed options	1-29
Completing the Windows 2000/XP/Server 2003 printer connection	1-33
Installing Fiery EX2101 software	1-42
Adobe Acrobat	1-43
Using Fiery EX2101 software for the first time	1-44
Configuring the connection for Fiery utilities	1-45
Configuring the connection for Fiery Downloader, Fiery Spooler, and Command WorkStation	1-45
Configuring the connection for Fiery VDP Resource Manager	1-51
Configuring a connection for Job Monitor	1-53
Installing the printer description files for Windows	1-55

Chapter 2: Installing User Software on a Mac OS Computer

Setting up the Fiery EX2101 as a PostScript printer	2-1
Setting up Mac OS 9 printer drivers and printer description files	2-2
Setting up Mac OS X printer drivers and printer description files	2-4
Installing Fiery EX2101 software and fonts	2-11
Installing MRJ on your computer	2-12
Configuring a connection for Fiery Spooler	2-13
Configuring a connection for Fiery Downloader	2-17
Configuring the connection for Command Workstation LE for Mac OS X	2-18
Configuring the connection for Fiery VDP Resource Manager	2-22
Fonts	2-25

Chapter 3: Fiery WebTools

Setting up Fiery WebTools	3-1
Using the Installer WebTool	3-2

Chapter 4: Troubleshooting

On Windows computers	4-1
Setting up printing on Windows NT 4.0/2000/XP/Server 2003 computers	4-1
Reinstalling the Adobe PostScript Printer Driver on Windows 98/Me	4-1
Problems with the Fiery utilities on Windows computers	4-1
On Mac OS computers	4-2
Setting up the Fiery EX2101 in the Mac OS 9 Chooser	4-2
Setting up the Fiery EX2101 in the Mac OS X Print Center	4-3

Index

Introduction

This manual describes how to install user software for the Fiery EX2101 for Xerox 2101, and how to set up printing from Microsoft Windows and Apple Mac OS computers. For information about setting up network servers and clients to use the Fiery EX2101 for Xerox 2101, see the *Configuration Guide*. For general information on using the Xerox 2101 copier, your computer, application software, or network, see the manuals that accompany those products.

The Fiery EX2101 includes support for Fiery WebTools™ and software for Command WorkStation (Windows only) or Command WorkStation LE (Mac OS X only), which enables an operator to manage all jobs sent to the Fiery EX2101. Although it may not be the case at all sites, the documentation for this product assumes the presence of an operator who controls and manages jobs sent by users from remote workstations.

NOTE: The term “Fiery EX2101” is used to refer to the Fiery EX2101 for Xerox 2101. The name “Aero” is used in illustrations to represent the Fiery EX2101. The term “Windows” is used to refer to Windows 98, Windows Me, Windows NT 4.0, Windows 2000, and Windows XP wherever appropriate.

About this manual

This manual covers the following topics:

- Installing printer files on Windows and Mac OS computers
- Setting up printing connections on Windows and Mac OS computers
- Installing Fiery® utilities and other user software on Windows and Mac OS computers

Specifications

- 1 GHz Intel Pentium III CPU
- 256MB RAM
- 60GB hard disk drive
- An internal CD-ROM drive
- A 250MB ZIP drive for removable media
- Supports AppleTalk, TCP/IP, and IPX/SPX protocols simultaneously
- Supports Port 9100
- Supports twisted pair (Fast Ethernet 100BaseTX or Ethernet 10BaseT)
- Supports Adobe PostScript 3
- Supports PCL 5/6 printing (for Windows computers)
- Includes 136 fonts (126 Adobe Type1 PostScript and 10 TrueType)

In addition, two Adobe Multiple Master fonts are included and are used for font substitution in PDF files.

- Includes 81 PCL fonts (80 scalable fonts and 1 bitmap font)
- Fiery WebTools, including WebSetup™ (Windows only), Status, WebSpooler™, WebLink, Installer™, WebDownloader™, and WebScan™
- Command WorkStation (Windows only) software
- Command WorkStation LE (Mac OS X only) software
- Supports DocBuilder Pro (available as an option)
- Supports FreeForm™ and FreeForm 2
- Supports Internet Printing Protocol (IPP) for Windows 98, Windows Me, and Windows 2000/XP/Server 2003
- Supports E-mail printing

User software

Fiery EX2101 user software is provided on the User Software CD.

Adobe PostScript Printer Driver	Enables you to print to the Fiery EX2101 from Windows 98/Me, Windows NT 4.0, and Mac OS computers; also supports Fiery EX2101 and PostScript 3 features. Windows 2000/XP users should use the Microsoft PostScript Printer Driver provided with those operating systems.
PostScript Printer Description (PPD) file	For use with the PostScript printer driver that allows the Fiery EX2101 to be displayed in the Print and Page Setup dialog boxes of popular applications. The Fiery EX2101 PPDs provide information about the Fiery EX2101 and your particular copier model to the application and printer driver you are using.
PostScript fonts (Mac OS only)	PostScript screen and printer fonts that correspond to the PostScript printer fonts installed on the Fiery EX2101. For a complete list of PostScript fonts installed on the Fiery EX2101, see Appendix B of the <i>Printing Guide</i> .
PCL Printer Driver	Enables you to print to the Fiery EX2101 from Windows computers; supports Fiery EX2101 PCL print features.
Fiery Downloader	Enables you to print PostScript files, PCL files, Encapsulated PostScript (EPS) files, TIFF version 6.0 files, and Portable Document Format (PDF) versions 1.2 and 1.3 files directly to the Fiery EX2101 without opening the application in which they were created. You can also use it to manage the printer fonts installed on the Fiery EX2101.
Fiery Spooler (Mac OS only)	Enables you to view the order and priority of print jobs, customize printer settings for jobs, delete jobs, and move jobs between queues. You can also view job accounting information.

Fiery VDP Resource Manager	Allows you to search for and delete global objects used in variable printing.
Fiery Printer Delete Utility (Windows only)	Finds Fiery EX2101 printer drivers installed on your computer and allows you to delete them.
Command WorkStation (Windows only)	Enables you, as the operator, to control the Fiery EX2101 functions from Windows 98/Me and Windows NT/2000/XP computers. To use Command WorkStation, see the <i>Job Management Guide</i> .
Command WorkStation LE (Mac OS X only)	Enables you, as the operator, to control the Fiery EX2101 functions from Mac OS X computers. To use Command WorkStation LE, see the <i>Job Management Guide</i> .
MRJ (Mac OS only)	Mac OS Runtime for Java (MRJ) is required by all Java-based Fiery utilities. If MRJ is not detected when you install these utilities, the MRJ installer is automatically launched.

NOTE: You can install PostScript and PCL printer drivers and printer description files from the User Software CD or from the Fiery EX2101 with the Installer WebTool. For instructions, see “[Using the Installer WebTool](#)” on page 3-2.

Fiery WebTools

Fiery WebTools allow you to manage the Fiery EX2101 remotely from the Internet or from your company's intranet. You access Fiery WebTools from the Fiery WebTools home page.

NOTE: To find out which Fiery WebTools are supported, see “Specifications” on page x.

Fiery WebTools	Summary	For more information
Status	Displays the jobs currently processing and printing.	See the <i>Printing Guide</i> .
WebSpooler	Allows you to view, manipulate, reorder, reprint, and delete jobs currently spooling, processing, or printing on the Fiery EX2101. It also allows you to view, print, and delete the Job Log.	See the <i>Job Management Guide</i> .
WebLink	Provides a link to another web page, provided you have a valid Internet connection.	See the <i>Printing Guide</i> and the <i>Configuration Guide</i> .
Installer	Allows you to download Fiery EX2101 printer file installers directly from the server.	See Chapter 3.
WebDownloader	Allows you to download PostScript, PCL, EPS, and PDF files to the Fiery EX2101.	See the <i>Printing Guide</i> .
WebSetup (Windows only)	Allows you to modify the Fiery EX2101 configuration (Setup) remotely. This function requires the Administrator password, if one has been set.	See the <i>Configuration Guide</i> .

System requirements

System requirements are described in detail in the printed *Quick Start Guide* provided in the media pack.

Chapter 1: Installing User Software on a Windows Computer

This chapter describes the procedures for installing the EX2101 software and setting up printing from a computer using a supported version of Windows. For Windows versions supported, see the *Quick Start Guide*.

The general steps for installing the software are as follows:

- Install the PostScript printer driver or PCL printer driver and corresponding printer driver files, and set up the printer driver to communicate with the Fiery EX2101.
- Install Fiery utilities and user software—Fiery Downloader, Fiery VDP Resource Manager, Fiery Spooler, EFI Job Monitor, Fiery Printer Delete Utility, Hot Folders, and Command WorkStation.
- Configure the connection for Fiery utilities and user software.
- Copy additional files from the User Software CD as required.

Setting up PostScript or PCL printing with Windows 98/Me

To set up the Fiery EX2101 as a PostScript or PCL printer, you must install the PostScript or PCL printer driver for Windows 98/Me and the corresponding printer description files. You must also configure either a local connection for printing directly or a network connection for printing over the network.

NOTE: Using the PostScript driver requires either the hard disk option or the PostScript option installed on the copier.

If you are printing using SMB (Server Message Block), you can connect to the Fiery EX2101 and install the printer drivers in a single procedure. For more information, see “[Setting up SMB printing with Windows 98/Me](#)” on page 1-9.

Installing the PostScript or PCL printer driver for Windows 98/Me

The following procedure describes installing the printer driver from the User Software CD. Subsequent procedures describe configuring installable options and setting up the printer connection.

NOTE: The following procedures use Windows 98 illustrations. Windows Me differences are noted.

TO INSTALL THE POSTSCRIPT OR PCL PRINTER DRIVER FOR WINDOWS 98/ME

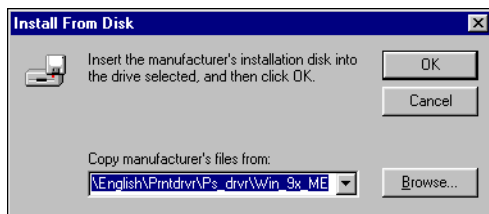
1. Click **Start**, choose **Settings**, and then choose **Printers**.
2. In the **Printers** window, double-click the **Add Printer** icon and click **Next**.
3. Specify printing using a local printer and click **Next**.

This procedure describes the installation of a local printer. You can modify the connection later, according to your network type.
4. In the dialog box displaying lists of manufacturers and printers, click **Have Disk**.

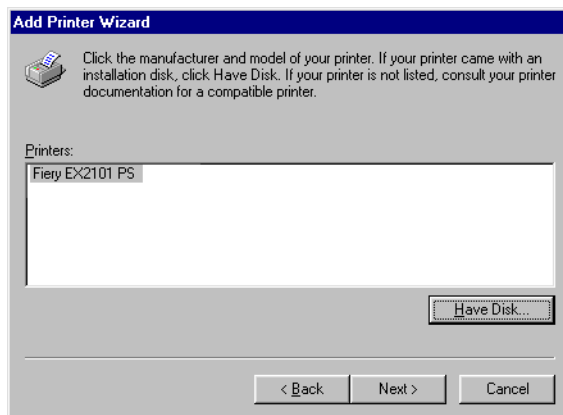
The **Install From Disk** dialog box prompts you for the disk.
5. Type the name of the CD-ROM drive (for example, **D:**), and click **Browse**.

Browse to **English\Prntdrv\Ps_drvr\Win_9x_ME**.
6. Make sure **"Oemsetup.inf"** is selected and click **OK**.

The path is copied to the **Install From Disk** dialog box.
7. Verify the path is correct and click **OK**.



8. In the Printers box, select the Fiery EX2101 printer driver appropriate for your printer and click Next.



9. Select the LPT1 port and click Next.

You will configure the port later, according to your network type.

10. Enter a name for the Fiery EX2101 in the Printer Name box.
11. Specify whether you want to make the Fiery EX2101 the default printer and click Next.
12. Select No to printing the Test Page and click Finish.

The necessary files are installed to your computer.

Configuring installed options

After you have completed the printer driver installation, you must configure the Fiery EX2101 for the options installed on the copier. This allows the Fiery EX2101 to take advantage of the copier options. You can configure the options manually; or for TCP/IP network connections, you can use the Two-Way Communication feature to configure the options automatically.

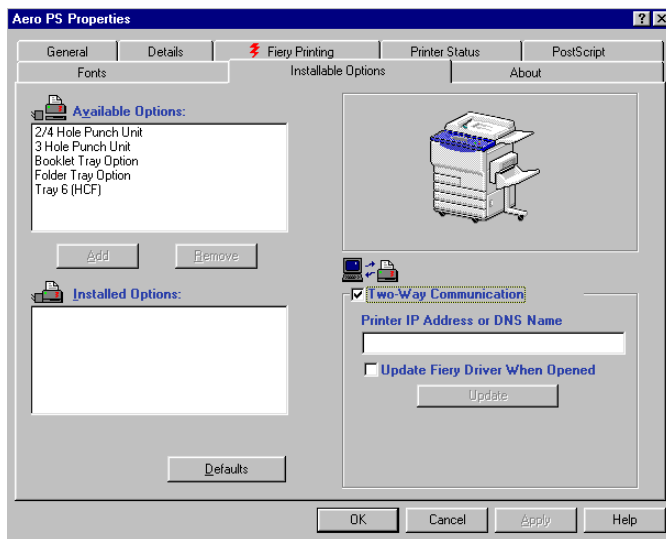
Configuring installed options manually

The following procedure describes how to manually configure the EX2101 for the options installed on the copier.

NOTE: The following procedures use Windows Me illustrations.

TO CONFIGURE OPTIONS MANUALLY FOR WINDOWS 98/ME

1. Click Start, choose Settings, and then choose Printers.
2. In the Printers window, right-click the Fiery EX2101 printer driver icon and choose Properties.
3. Click the Installable Options tab.
4. Select an installed option from the Available Options list.
5. Click Add to move the option to the Installed Options list.



Tray 6 (HCF)—Not Installed, Tray 6 (HCF)

Punch Options—Not Installed, 2/4 Hole Punch Unit, 3 Hole Punch Unit

Booklet Tray Option—Not Installed, Installed

Folder Tray Option—Not Installed, Installed

NOTE: The Booklet Tray Option and Folder Tray Option is not available for the PCL driver.

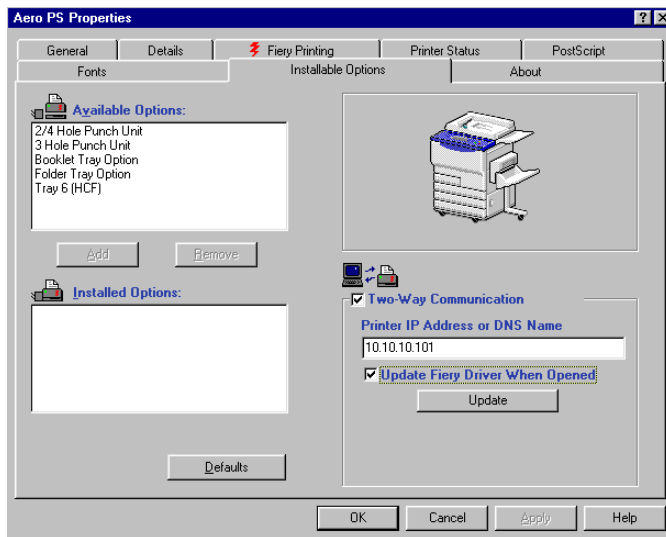
6. Click Apply.

Configuring installed options and updating print options settings automatically

If you have a TCP/IP-enabled network, you can automatically update your printer driver to reflect the options currently installed on the copier. When the printer driver is first installed, the options have default settings that were set up in Fiery EX2101 Setup. When you update the printer driver with the Two-Way Communication feature, you allow the Fiery EX2101 to complete the actual setting.

TO CONFIGURE INSTALLED OPTIONS AND UPDATE PRINT OPTIONS SETTINGS AUTOMATICALLY FOR WINDOWS 98/ME

1. Click Start, choose Settings, and then choose Printers.
2. In the Printers window, right-click the icon for the Fiery EX2101 PostScript or PCL printer driver and choose Properties.
3. Click the Installable Options tab.
4. Select Two-Way Communication.



5. Enter the Fiery EX2101 IP address or DNS name.
6. If you want your printer driver to display the current settings when opened, select **Update Fiery Driver When Opened**.
7. Click **Update**, and then click **OK**.

Completing the Windows 98/Me printer connection

To print from Windows 98/Me, you must:

- Set up network servers, if any.
- Set up the Fiery EX2101 to accept print jobs from your computer.
- Configure a port on each Windows 98/Me computer for the network type.

To do this	See
Configure the IPX (Novell) connection	“Completing the Windows 98/Me IPX/SPX or IPX (Novell) connection” on page 1-6
Setting up the Windows (SMB) printing	“Setting up SMB printing with Windows 98/Me” on page 1-9
Setting up IPP printing	“Setting up IPP printing with Windows 98/Me” on page 1-11

Completing the Windows 98/Me IPX/SPX or IPX (Novell) connection

If you are printing through a Novell server, the Novell network and file server should be set up before you begin. The file server should be configured with a print server and print connection for the Fiery EX2101. For details, see your NetWare documentation and the [Configuration Guide](#).

To print from Windows 98/Me computers over IPX (Novell), you must first set up IPX/SPX protocols, and then configure the Fiery EX2101 by choosing the IPX frame type and entering the settings for the port you use.

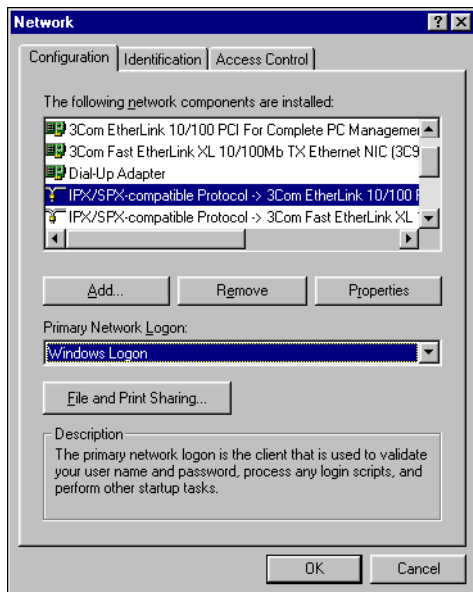
**TO SELECT A FRAME TYPE FOR IPX/SPX PRINTING
FOR WINDOWS 98/ME**

1. Click **Start**, choose **Settings**, and then choose **Control Panel**.
2. Double-click the **Network** icon.

Make sure that IPX/SPX-compatible Protocol is listed in the Installed Network Components section.

For instructions, see your Windows 98/Me documentation or contact Microsoft Technical Support.

3. Double-click the **IPX/SPX-compatible Protocol** icon.

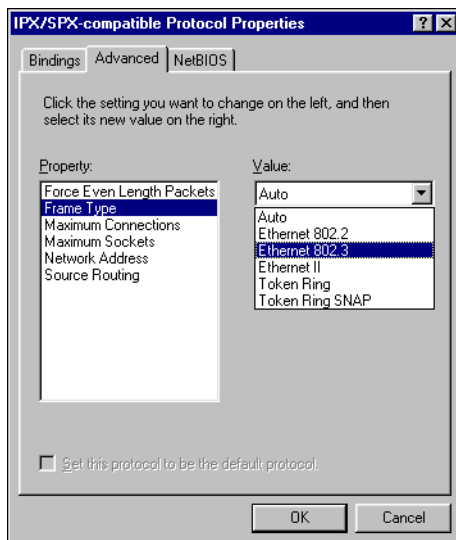


4. Click the **Advanced** tab.
5. Select **Frame Type** in the **Property List**.

6. In the Value menu, choose the Frame Type that corresponds to the one set in Fiery EX2101 Network Setup.

If necessary, print the Configuration page from the Control Panel to determine which Frame Type(s) are configured.

NOTE: Do not select Auto. Doing so may not select the Frame Type specified on the Fiery EX2101.



7. Click OK and close the Network Control Panel.
8. When prompted to restart your computer, click Yes.

TO SET UP A PORT FOR IPX (NOVELL) PRINTING WITH WINDOWS 98/ME

1. Click Start, choose Settings, and then choose Printers.
2. In the Printers window, right-click the Fiery EX2101 printer icon and choose Properties.
3. Click the Details tab and click Add Port.

A list of connection options is displayed.

4. In the Add Port dialog box, specify the network path, or click Browse for a display of your network environment.
5. If you are using a NetWare file server, double-click the icon for the NetWare file server to use for printing to the Fiery EX2101.
6. Click the printer icon for the NetWare print queue you want to use and click OK.
7. In the Add Port dialog box, verify that the network path is updated and click OK.

Your print jobs are transmitted to the specified print queue on the Novell file server. The Fiery EX2101 polls the file server, and if jobs are present, they are transmitted to the Fiery EX2101.

8. To confirm the connection, click the General tab, click Apply, and then click Print Test Page.

After the Test Page prints successfully, you are ready to print from the computer.

Setting up SMB printing with Windows 98/Me

SMB printing (also known as Windows or WINS printing) allows you to install the PostScript or PCL printer driver and printer description files on your computer from the Fiery EX2101 using Point and Print, and print to a particular connection (Hold, Print, or Direct). To set up SMB printing, you must have the TCP/IP protocol and Client for Microsoft Networks installed.

Each connection (Hold, Print, or Direct) requires a new printer driver and printer description file. For each connection, repeat the procedure “[To set up SMB printing on Windows 98/Me](#)” on page 1-10. If you install more than one printer, give each a descriptive name during printer driver installation, such as Aero-Print or Aero-Hold, so you can easily identify printers.

BEFORE YOU BEGIN

- **Configure the Fiery EX2101 for SMB printing in Run Setup > Network Setup > Service Setup > Windows Setup.**

SMB printing is referred to as Windows Printing in Setup, on the Control Panel Map, and on the Configuration page.

TO SET UP SMB PRINTING ON WINDOWS 98/ME

1. **Double-click the Network Neighborhood icon to display your network environment.**
2. **Browse for the printer you want to print to.**

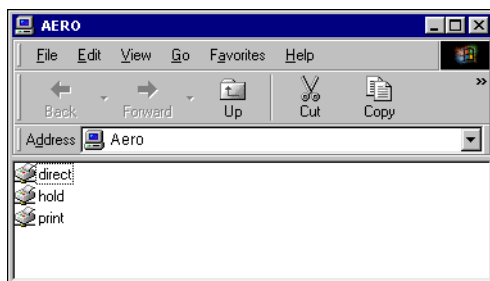
Browse for the name entered in Network Setup>Service Setup>Windows Setup>Server Name. For this information, see the Configuration page.

NOTE: You can also locate the printer using the Find feature on your Windows computer. Click Start, choose Find, and then choose Computer. Enter the name of the printer, and click Find Now.

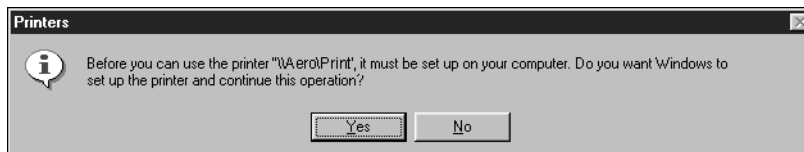
If you cannot locate your Fiery EX2101, contact your network administrator.

3. **Double-click the name of the printer to display enabled print connections.**

NOTE: For a description of each print connection, see the *Configuration Guide*.



4. **Double-click the name of the connection you want to print to.**
5. **Select Yes to install the PostScript or PCL printer driver and printer description file for the selected connection.**



The Add Printer Wizard dialog box appears.

6. Specify whether you print from MS-DOS based programs and click Next.

If you select Yes, you must capture a printer port before proceeding with the installation. For details, see your Windows documentation.

7. In the dialog box displaying lists of manufacturers and printers, click Have Disk.

The Install from Disk dialog box prompts you for the disk.

8. If you are installing from the CD, type the name of the CD-ROM drive (for example, D:\), and click Browse.

9. Browse to English\Prntdrv\Ps_drvr\Win_9x_ME, and click open.

Make sure “Oemsetup.inf” is selected.

The path is copied to the Install From Disk dialog box.

10. Verify the path is correct and click OK.

Setting up IPP printing with Windows 98/Me

With Internet Printing Protocol (IPP), print jobs are sent to the Fiery EX2101 over the Internet.

IPP printing is supported on Windows 2000/XP/Server 2003 but can be enabled on Windows 98/Me computers by installing the “wpnpins.exe” client file (available on the Windows Me CD or the Windows 2000 Server CD). For more information about obtaining and installing this client, contact the Microsoft Corporation or Microsoft Technical Support.

NOTE: The IPP setup procedures are performed after installing the appropriate printer drivers. For more information, see [“Installing the PostScript or PCL printer driver for Windows 98/Me”](#) on page 1-2.

BEFORE YOU BEGIN

1. Prepare the Fiery EX2101 for TCP/IP printing.
2. Make sure the Fiery EX2101 is configured for IPP printing.
For more information, see the *Configuration Guide*.
3. Specify the printing destination on your computer.

TO SET UP IPP PRINTING WITH WINDOWS 98/ME

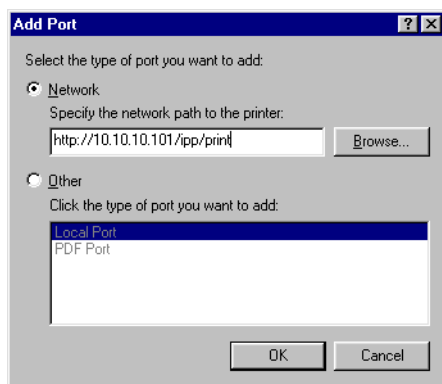
1. Click Start, choose Settings, and then choose Printers.
2. In the Printers window, right-click the icon for the Fiery EX2101 PostScript printer driver and choose Properties.
3. Click the Details tab and click Add Port.

The Add Port dialog box appears.

4. Enter the network path for the printer.

The path for the printer is the IP address or the DNS name, followed by ipp, and then by the Fiery EX2101 connection you want to print to (print, hold, or direct). Insert slashes between the elements, for example, `http://10.10.10.101/ipp/print`.

5. Click OK.



Setting up PostScript or PCL printing with Windows NT 4.0

To set up the Fiery EX2101 as a PostScript or PCL printer, you must install the PostScript or PCL printer driver for Windows NT 4.0 and the corresponding printer description files. You must also configure the print connection between the computer and the Fiery EX2101. If you are printing over a network, you must configure a network connection.

Installing the PostScript or PCL printer driver for Windows NT 4.0

The following procedures describe the installation of a local printer. Adding a printer to a local system requires that you log in to your local Windows NT 4.0 computer (not the network server domain) and that you are a member of the Administrators group. The procedure for adding a network printer is similar to adding a port. For instructions, see [“Completing the Windows NT 4.0 TCP/IP and LPR connection”](#) on page 1-19.

TO INSTALL THE POSTSCRIPT OR PCL PRINTER DRIVER FOR WINDOWS NT 4.0

1. If you are installing from the User Software CD, insert it into the CD-ROM drive.
2. Click Start, choose Settings, and then choose Printers.
3. Double-click Add Printer.
4. To install a printer locally, select My Computer and click Next.

My Computer is available if you logged in to a computer on which you have Administrator privileges. If it is not available, you can add a network printer. The procedure is similar to adding a port. For details, see [step 2](#) on [page 1-20](#).

5. Select LPT1: and click Next.

This is a general installation that works for the parallel port connection. You can add a network port later, according to your network type.

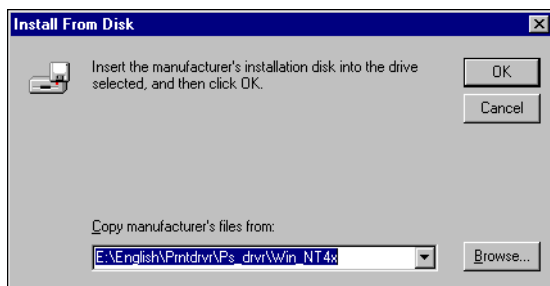
**6. In the dialog box displaying lists of manufacturers and printers, click Have Disk.**

The Install From Disk dialog box prompts you for the disk.

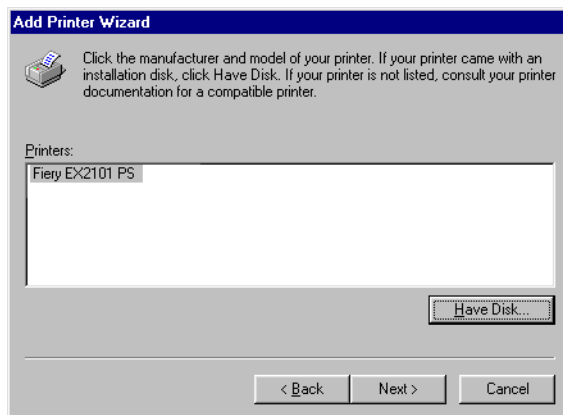
7. Type the name of the CD-ROM drive (for example, D:\), and click Browse.**8. Browse to the English\Prntdrv\Ps_drvr\Win_NT4x folder and click Open.**

Make sure "Oemsetup.inf" or "Oemsetup" is selected.

The path is copied to the Install From Disk dialog box.

9. Verify that the path is correct and click OK.

10. In the Printers box, select the Fiery EX2101 printer driver appropriate for your printer and click Next.



11. Type a name for the Fiery EX2101 in the Printer name field and specify whether you want to make it the default printer. Click Next.
12. Specify whether you want the printer installed as a shared printer and click Next.
If you select Shared, enter a Share Name for the printer and select the operating systems used by client computers. For information on shared printers, see the [Configuration Guide](#).
13. Click No to postpone printing a Test Page and click Finish.

When installation is complete, the Printers window is displayed with an icon for the newly installed printer.

Configuring installed options

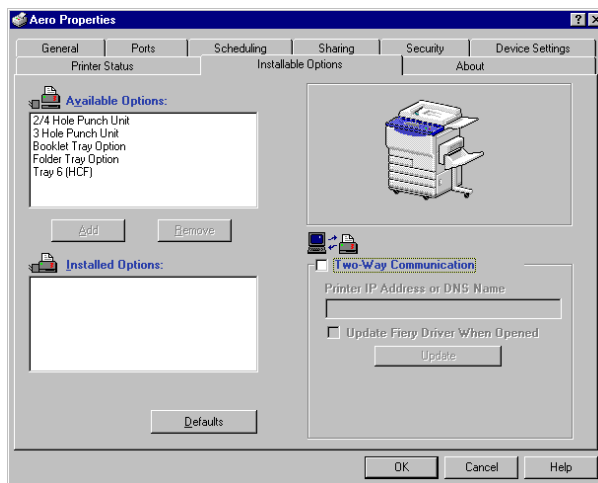
After you have completed the printer driver installation, you must configure the Fiery EX2101 for the options installed on the copier. This allows the Fiery EX2101 to take advantage of the copier options. You can configure the options manually, or for TCP/IP network connections, you can use the Two-Way Communication feature to configure the options automatically.

Configuring installed options manually

The following procedure describes how to manually configure the EX2101 for the options installed on the copier.

TO CONFIGURE INSTALLABLE OPTIONS ON THE FIERY EX2101 FROM THE POSTSCRIPT PRINTER DRIVER FOR WINDOWS NT 4.0

1. Click Start, choose Settings, and then choose Printers.
2. In the Printers window, right-click the Fiery EX2101 icon and choose Properties.
3. Click the Installable Options tab.
4. Select an installed option from the Available Options list.
5. Click Add to move the option to the Installed Options list.



Tray 6 (HCF)—Not Installed, Tray 6 (HCF)

Punch Options—Not Installed, 2/4 Hole Punch Unit, 3 Hole Punch Unit

Booklet Tray Option—Not Installed, Installed

Folder Tray Option—Not Installed, Installed

6. Click OK to activate the current settings.

NOTE: For Windows NT 4.0, you cannot specify Installable Options in the Advanced tab of the Fiery EX2101 Document Properties dialog box when printing from an application. To correctly specify Installable Options, install the printer driver from the User Software CD. Print your job to the Hold Queue and then override the options from the Command WorkStation Properties window or Fiery WebSpooler Override Print Settings dialog box. For more information, see the [Printing Guide](#) and [Job Management Guide](#).

TO CONFIGURE INSTALLABLE OPTIONS ON THE FIERY EX2101 FROM THE PCL PRINTER DRIVER

1. Click the Start button, choose Settings, and then choose Printers.
2. Right-click the Fiery EX2101 icon and choose Document Defaults.
3. Click the Installable Options tab and specify the options installed on the Fiery EX2101.
4. Select an installed option from the Available Options list, and click Add to move the option to the Installed Options list.

Tray 6 (HCF)—Not Installed, Tray 6 (HCF)

Punch Options—Not Installed, 2/4 Hole Punch Unit, 3 Hole Punch Unit

NOTE: The Booklet Tray Option and Folder Tray Option is not available for the PCL driver.

5. Click OK.

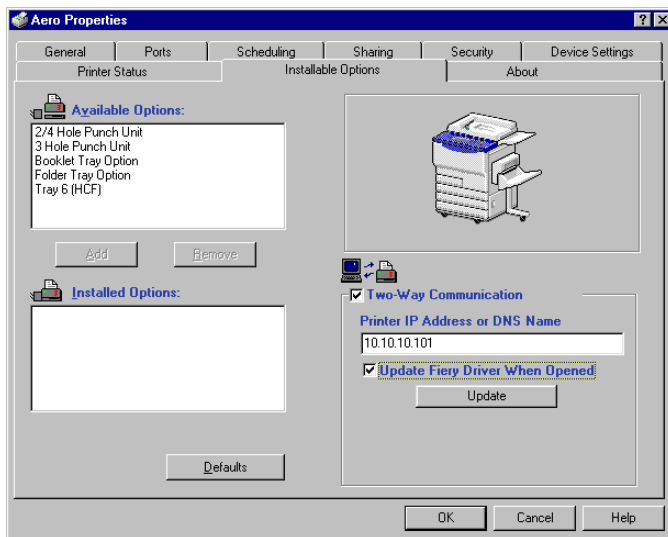
You are ready to connect to your network type. For details, see “[Completing the Windows NT 4.0 printer connection](#)” on page 1-19.

Configuring installed options and updating print options settings automatically

If you have a TCP/IP-enabled network, you can automatically update your printer driver to reflect the options currently installed on the copier. When the printer driver is first installed, the options have the default settings that were set up in Fiery EX2101 Setup. When you update the printer driver with the Two-Way Communication feature, you allow the Fiery EX2101 to complete the actual setting.

TO SET UP TWO-WAY COMMUNICATION FOR POSTSCRIPT OR PCL PRINTER DRIVERS FOR WINDOWS NT 4.0

1. Click Start, choose Settings, and then choose Printers.
2. In the Printers window, select the icon for the Fiery EX2101 PostScript or PCL printer driver.
3. Choose Properties (PostScript) or Document Defaults (PCL) from the File menu.
4. Click the Installable Options and select Two-Way Communication.



5. Enter the Fiery EX2101 IP address or DNS name.
6. If you want your printer driver to display the current settings when opened, select **Update Fiery Driver When Opened**.
7. Click **Update**.
8. Click **OK**.

Completing the Windows NT 4.0 printer connection

To print from Windows NT 4.0, you must:

- Set up network servers, if any.
- Set up the Fiery EX2101 to accept print jobs from your computer.
- Configure a port on each Windows NT 4.0 computer for the network type.

To do this	See
Configure the TCP/IP (LPR port) connection	“Completing the Windows NT 4.0 TCP/IP and LPR connection” on page 1-19
Configure the IPX (Novell) connection	“Completing the Windows NT 4.0 IPX (Novell) connection” on page 1-21
Setting up Windows (SMB) printing	“Setting up SMB printing on Windows NT 4.0” on page 1-24

Completing the Windows NT 4.0 TCP/IP and LPR connection

After you have installed the PostScript or PCL printer driver and printer driver files, complete the setup for the TCP/IP and LPR connection as follows:

- Prepare the Fiery EX2101 to accept print jobs using TCP/IP and LPR protocols.
For details, see the [Configuration Guide](#).
- Enable LPD printing from the Control Panel.
For details, see the [Configuration Guide](#).
- Configure the computer for the TCP/IP connection.

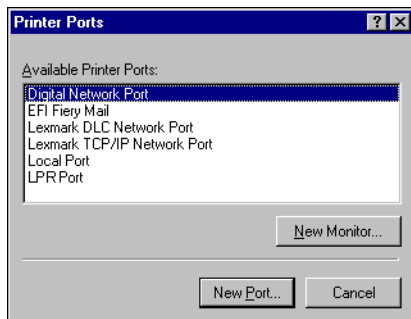
Before you continue, contact the system administrator for the IP address assigned to the Fiery EX2101, as well as the subnet mask and the gateway address, if they are used.

NOTE: The TCP/IP protocol should already be installed on the Windows NT computer.

TO SET UP TCP/IP AND LPR PRINTING FOR WINDOWS NT 4.0

1. **Open the Properties dialog box for the Fiery EX2101, and click the Ports tab.**
2. **Click Add Port.**

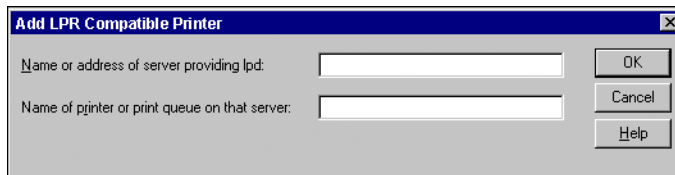
A list of the available port types is displayed.



3. **Select LPR Port and click New Port.**

If the LPR port is not listed, install the TCP/IP network protocol and Microsoft TCP/IP printing software. For more information, see your Windows documentation.

4. **Enter the IP address of the Fiery EX2101.**



If your network uses Domain Name Services (DNS), enter the DNS name assigned to the Fiery EX2101 instead of the IP address.

5. **Press Tab and type the name of the Fiery EX2101 connection you want to print to.**

print
hold
direct

NOTE: This name is case-sensitive; type it *exactly* as shown.

6. **Click OK.**

The computer checks the address or DNS name you entered and notifies you if it cannot resolve the address.

7. **Click Close in the Printer Ports dialog box.**

The new port configuration is reflected in the Ports tab. To verify the connection, you must close the Printer Properties dialog box.

8. **Click OK to close the Printer Properties dialog box.**

9. **Reopen the Printer Properties dialog box.**

10. **Click the General tab and click Print Test Page.**

When you print, your PostScript or PCL files are transmitted over the LPR Port connection to the Fiery EX2101.

11. **Click OK to close the Printer Properties dialog box.**

Completing the Windows NT 4.0 IPX (Novell) connection

Complete the setup for the IPX (Novell) connection as follows:

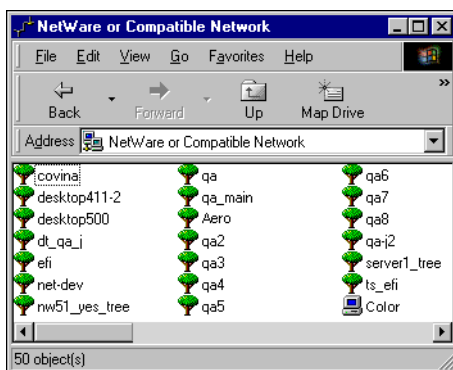
- Configure the Novell network and file server for handling Fiery EX2101 print jobs. The file server should be configured with a print server and print connection for the Fiery EX2101. For details, see your NetWare documentation.
- Prepare the Fiery EX2101 for IPX printing.
- Set up the IPX connection on the computer.

NOTE: NetWare protocols (NWLink IPX/SPX Compatible Transport) and NetWare client services should already be installed on the Windows NT 4.0 computer.

TO SET UP IPX (NOVELL) PRINTING FOR WINDOWS NT 4.0

1. **Double-click Network Neighborhood.**
2. **Double-click NetWare or Compatible Network.**

A list of NetWare servers is displayed.

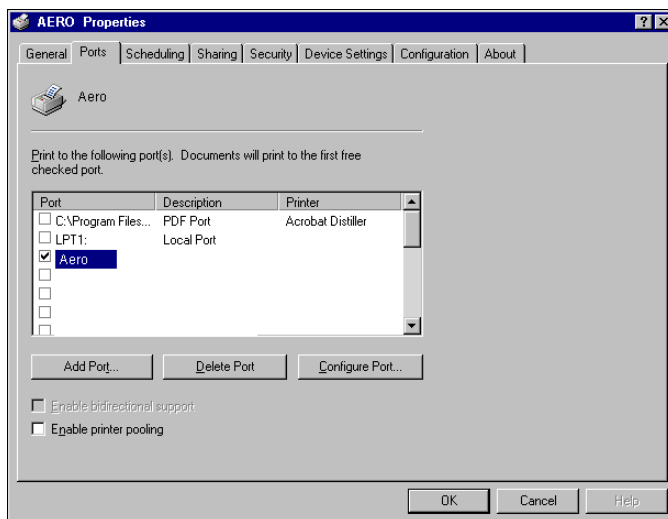


3. **Double-click the NetWare Tree or File Server on which the network administrator defined a print connection for the Fiery EX2101.**
To see the print connections, you may have to log in to the file server.
4. **Double-click the print connection defined for the Fiery EX2101.**
5. **If the NetWare server does not have a suitable driver for the Fiery EX2101, you may be prompted to set up the printer on your computer. Click Yes.**
6. **Click OK to install the Fiery EX2101 PostScript printer driver.**
7. **Follow the procedure starting with [step 6](#) on [page 1-14](#).**

When installation is complete, a new printer window appears, with the name of the print queue on the NetWare server.

8. Choose Properties from the File menu and click the Ports tab.

Verify that the connection to the NetWare queue is listed and selected as a port for the Fiery EX2101.

**9. Click the General tab and click Print Test Page.****10. In the printer Job Notes window, enter user and job identification information and click OK.**

The Test Page remains listed in the queue window until it is printed.

The Fiery EX2101 polls the NetWare server for print jobs in the print connection defined for the Fiery EX2101. When you print, your PostScript files are spooled to that connection and transmitted over the queue “port” to the Fiery EX2101.

Setting up SMB printing on Windows NT 4.0

SMB printing (also known as Windows printing) allows you to install the PostScript or PCL printer driver and printer description files, and print from your computer to a particular print connection (Hold, Print, or Direct) on the Fiery EX2101. These instructions assume you have installed the TCP/IP protocol and Client for Microsoft Networks.

Each connection (Hold, Print, or Direct) requires a new printer driver and printer description file. To set up printing to a second or third print connection, repeat the following procedure, “[Setting up SMB printing on Windows NT 4.0](#)”. If you install more than one printer, give each a descriptive name during printer driver installation, such as Aero-Print or Aero-Hold, so you can easily identify printers.

BEFORE YOU BEGIN

- **Configure the Fiery EX2101 for SMB printing in Run Setup>Network Setup>Service Setup>Windows Setup.**

SMB printing is referred to as Windows Printing in Setup on the Control Panel Map, and on the Configuration page. For more information, see the [Configuration Guide](#).

TO SET UP SMB PRINTING ON WINDOWS NT 4.0

1. **Double-click Network Neighborhood.**



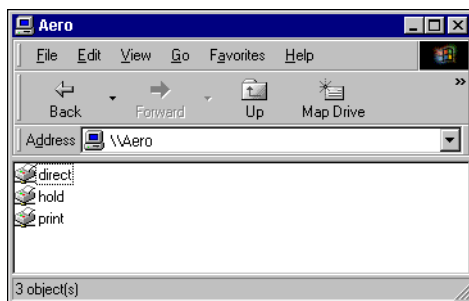
2. Browse for the printer you want to print to.

The printer name you are browsing for is the name entered in Network Setup> Service Setup> Windows Setup> Server Name. For this information, see the Configuration page.

The amount of network traffic determines the amount of time required for the Browse function.

NOTE: You can also locate the printer with the Find feature on your Windows computer. Click Start, choose Find, and then choose Computer. Enter the name of the printer, and click Find Now.

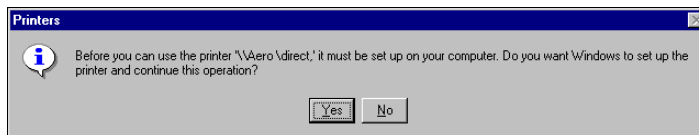
If you cannot locate your Fiery EX2101, contact your network administrator.

3. Double-click the name of the Fiery EX2101 to display enabled print connections.

NOTE: You may be promoted to enter a network password. If so, enter an arbitrary alphabet letter for Connect As and click OK.

4. Double-click the name of the connection you want to print to.

The Printers dialog box appears, asking whether you want to set up the printer.

**5. Select Yes to complete the installation for the selected connection.**

Setting up PostScript or PCL printing with Windows 2000/XP/Server 2003

To set up the Fiery EX2101 as a PostScript or PCL printer, you must install the PostScript or PCL printer driver for Windows 2000/XP/Server 2003 and the corresponding printer description files. You must also configure the print connection between the computer and the Fiery EX2101. If you are printing over a network, you must configure a network connection.

Installing the PostScript or PCL printer driver for Windows 2000/XP/Server 2003

The following procedure describes installing the printer driver from the User Software CD. Subsequent procedures describe setting up the print connection.

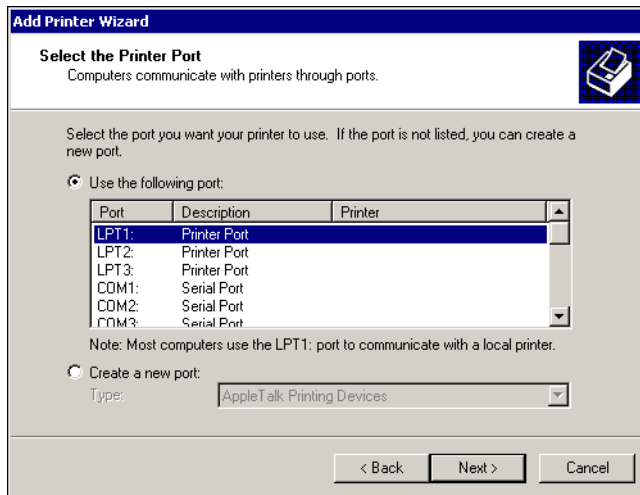
NOTE: The procedures for installing PostScript printer drivers on Windows 2000 and Windows XP are similar. Windows 2000 illustrations are used and differences noted in the text.

TO INSTALL THE POSTSCRIPT OR PCL PRINTER DRIVER FOR WINDOWS 2000/XP/SERVER 2003

1. **On Windows 2000, click Start, choose Settings, and then choose Printers.
On Windows XP, click Start and choose Printer and Faxes.**
2. **On Windows 2000, double-click the Add Printer icon and click Next.
On Windows XP, click Add Printer.**
3. **Specify printing using a Local printer and click Next.**

This procedure describes the installation of a local printer. You can modify the connection later, according to your network type.

4. Select LPT1: and click Next.



5. In the dialog box displaying lists of manufacturers and printers, click Have Disk.

The Install From Disk dialog box prompts you for the disk.

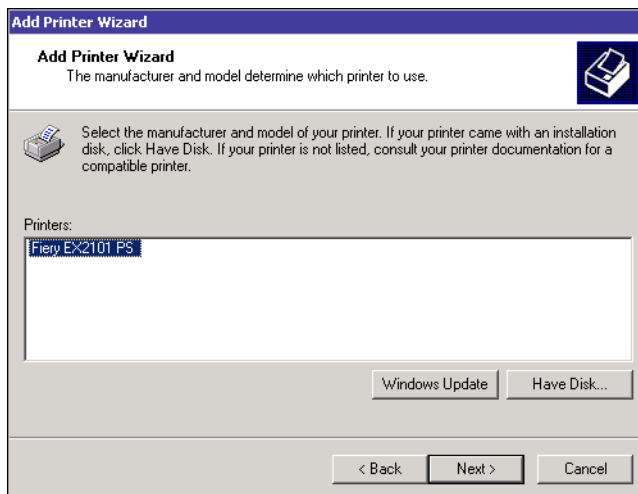
6. Type the name of the CD-ROM drive (for example, D:\) and click Browse. Browse to the English\Prntdrv\Ps_drvr\Win_2K_XP folder.

Make sure "Oemsetup.inf" or "Oemsetup" is selected and click Open.

7. Verify the path is correct and click OK.

The path is copied to the Install From Disk dialog box.

8. In the Printers box, select the Fiery EX2101 printer driver for your printer and click Next.



9. Type a name for the Fiery EX2101 in the Printer name field and click Next.

This name will be used in the Printers and queue windows.

10. Follow the instructions in the remaining windows.

When asked whether to print a Test Page, select No.

The necessary files are installed to your hard disk.

NOTE: The Digital Signature Not Found window indicates that the printer driver for Windows 2000 does not have a Microsoft digital signature. However, printing to the Fiery EX2101 is processed correctly; click Yes to continue with installation.

11. If this is the first printer driver you are installing on the computer, you may be prompted to install files from the Windows 2000 CD. Insert the CD-ROM, browse to the win2000\english\i386 folder, and then click OK.

When installation is complete, the Printers window is displayed with an icon for the newly installed printer. You must now configure the options installed on your copier.

Configuring installed options

After you have completed the printer driver installation, you must configure the Fiery EX2101 for the options installed on the copier. This allows the Fiery EX2101 to take advantage of the copier options. You can configure the options manually, or for TCP/IP network connections, you can use the Two-Way Communication feature to configure the options automatically.

Configuring installed options manually

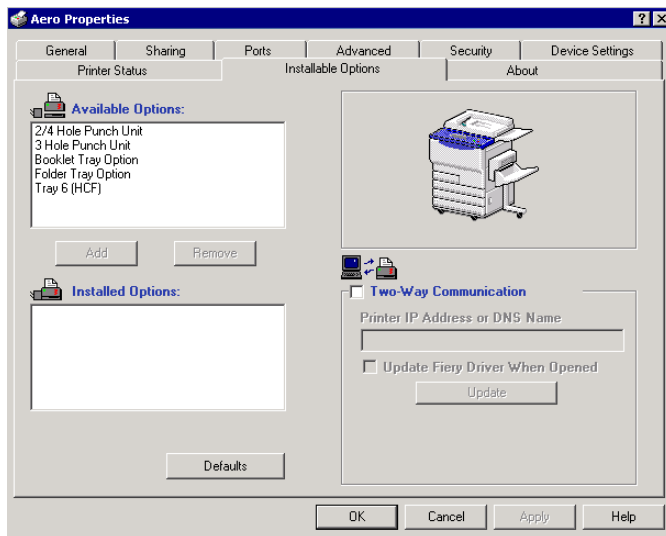
The following procedure describes how to manually configure the EX2101 for the options installed on the copier.

NOTE: The following procedures use Windows 2000 illustrations.

TO CONFIGURE INSTALLABLE OPTIONS ON THE FIERY EX2101 FROM THE POSTSCRIPT PRINTER DRIVER FOR WINDOWS 2000/XP/SERVER 2003

1. On Windows 2000, click Start, choose Settings, and then choose Printers. On Windows XP, click Start, and choose Printers and Faxes.
2. Right-click the Fiery EX2101 icon and choose Properties.
3. Click the Installable Options tab.
4. Select an installed option from the Available Options list.

5. Click Add to move the option to the Installed Options list.



Tray 6 (HCF)—Not Installed, Tray 6 (HCF)

Punch Options—Not Installed, 2/4 Hole Punch Unit, 3 Hole Punch Unit

Booklet Tray Option—Not Installed, Installed

Folder Tray Option—Not Installed, Installed

6. Click the Advanced tab.

7. For Windows 2000/XP/Server 2003, you must select and clear the following options.

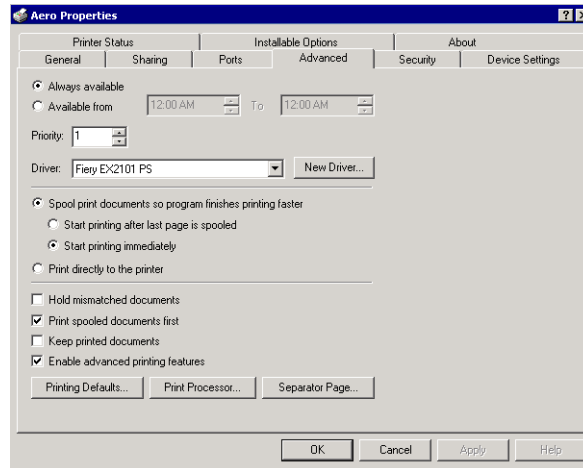
Select these options:

- Spool print documents so program finishes printing faster
- Start printing immediately
- Print spooled documents first

Clear this option:

- Enable advanced printing features

8. Click OK to activate the current settings.



You are ready to connect to your network type. For instructions, see [“Completing the Windows 2000/XP/Server 2003 printer connection”](#) on page 1-33).

TO CONFIGURE INSTALLABLE OPTIONS ON THE FIERY EX2101 FROM THE PCL PRINTER DRIVER

1. Click the Start button, choose Settings, and then choose Printers.
2. Right-click the Fiery EX2101 icon and choose Print Settings from the File menu.
3. Click the Installable Options tab and specify the options installed on the Fiery EX2101.
4. Select an installed option from the Available Options list, and click Add to move the option to the Installed Options list.

Tray 6 (HCF)—Not Installed, Tray 6 (HCF)

Punch Options—Not Installed, 2/4 Hole Punch Unit, 3 Hole Punch Unit

NOTE: The Booklet Tray Option and Folder Tray Option is not available for the PCL driver.

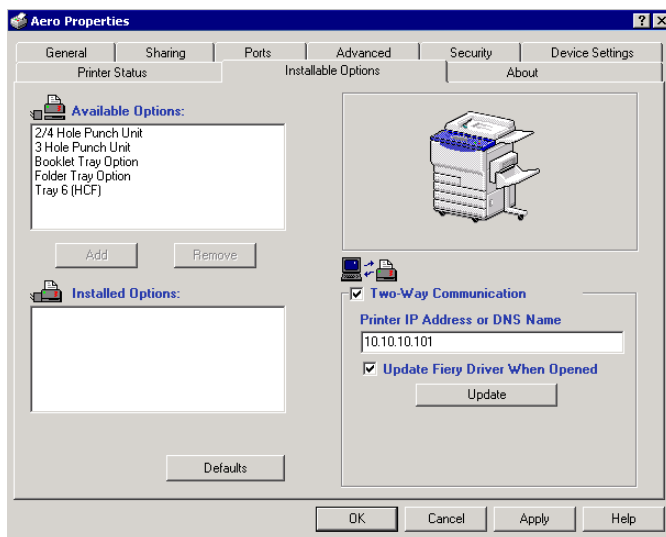
5. Click OK.

Configuring installed options and updating print options settings automatically

If you have a TCP/IP-enabled network, you can automatically update your printer driver to reflect the options currently installed on the copier. When the printer driver is first installed, the options have the default settings that were set up in Fiery EX2101 Setup. When you update the printer driver with the Two-Way Communication feature, you allow the Fiery EX2101 to complete the actual setting.

TO SET UP TWO-WAY COMMUNICATION FOR POSTSCRIPT OR PCL PRINTER DRIVERS FOR WINDOWS 2000/XP/SERVER 2003

1. Click Start, choose Settings, and then choose Printers.
2. In the Printers window, select the icon for the Fiery EX2101 PostScript or PCL printer driver.
3. Choose Properties (PostScript) or Print Settings (PCL) from the File menu.
4. Click the Installable Options and select Two-Way Communication.



5. Enter the Fiery EX2101 IP address or DNS name.
6. If you want your printer driver to display the current settings when opened, select **Update Fiery Driver When Opened**.
7. Click **Update**.
8. Click **OK**.

Completing the Windows 2000/XP/Server 2003 printer connection

To print from Windows 2000/XP/Server 2003, you must:

- Set up network servers, if any.
- Set up the Fiery EX2101 to accept print jobs from your computer.
- Configure a port on each Windows 2000/XP/Server 2003 computer for the network type.

To do this	See
Configure the TCP/IP (LPR port) connection	“Completing the Windows 2000/XP/Server 2003 TCP/IP and Port 9100 or LPR printing connection” on page 1-34
Configure the IPX (Novell) connection	“Completing the Windows 2000/XP/Server 2003 IPX (Novell) connection” on page 1-37
Setting up Windows (SMB) printing	“Setting up SMB printing on Windows 2000/XP/Server 2003” on page 1-39
Setting up IPP printing	“Setting up IPP printing with Windows 2000/XP/Server 2003” on page 1-41

NOTE: The procedures for completing the printer connection for Windows 2000 and Windows XP are similar. Windows 2000 illustrations are used, with relevant Windows XP differences noted.

Completing the Windows 2000/XP/Server 2003 TCP/IP and Port 9100 or LPR printing connection

After you have installed the PostScript and printer driver files, complete the setup for the TCP/IP and LPR printing connection as follows:

- Prepare the Fiery EX2101 to accept print jobs using TCP/IP and LPR protocols. For details, see the *Configuration Guide*.
- Enable LPD or Port 9100 printing from the Control Panel. For details, see the *Configuration Guide*.
- Configure the computer for the TCP/IP connection.

Before you continue, contact the system administrator for the IP address assigned to the Fiery EX2101, as well as the subnet mask and the gateway address, if they are used.

NOTE: The TCP/IP protocol should already be installed on the Windows 2000/XP/Server 2003 workstation.

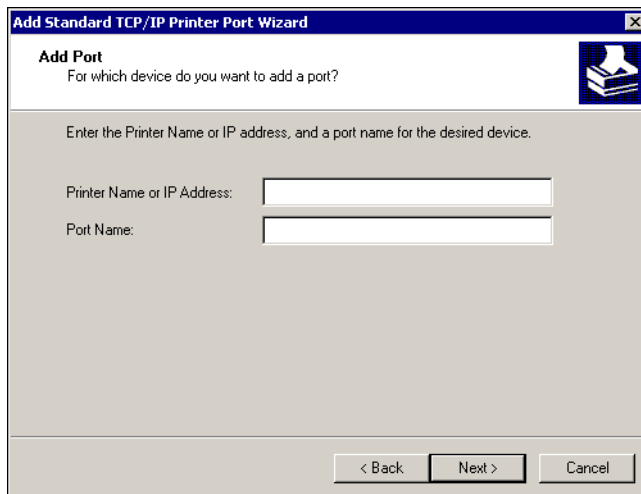
NOTE: You can also set up the LPR printing connection by installing Print Services for UNIX, which is supplied as an add-on Windows component with your Windows 2000/XP/Server 2003 CD. For more information, see your Windows documentation.

TO SET UP TCP/IP AND PORT 9100 OR LPR PRINTING CONNECTION FOR WINDOWS 2000/XP/SERVER 2003

1. Open the Properties dialog box for the Fiery EX2101 and click the Ports tab.
2. Click Add Port.
3. Select Standard TCP/IP Port for Available port types and click New Port.
4. Click Next.

The Add Standard TCP/IP Printer Port Wizard dialog box appears.

5. Enter the IP address of the Fiery EX2101.



6. Click Next.

The device is detected automatically.

7. Click Finish to close the Add Standard TCP/IP Printer Port Wizard dialog box, and then click Close in the Printer Ports dialog box.

8. Click Configure Port in the Properties dialog box.

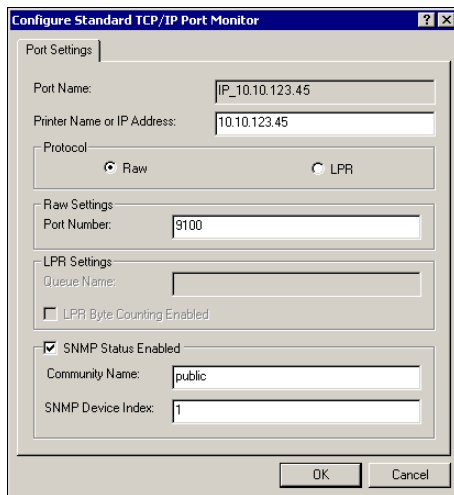
The Configure Standard TCP/IP Port Monitor dialog box appears.

9. If you have LPD printing enabled at the Control Panel, select LPR for Protocol and LPR Byte Counting Enabled under LPR Settings.

NOTE: You can also proceed without selecting LPR Byte Counting Enabled under LPR settings.

10. If you have Port 9100 printing enabled at the Control Panel, select Raw.

The port number 9100 is automatically displayed under Raw Settings. You can print to the printer connection selected for Port 9100 printing at the Control Panel.

**11. Enter the name of the print connection.**

For LPR, use print, hold, or direct.

For Port 9100, manually enter the following port numbers for each print connection under Raw Settings:

Fiery EX2101 default: 9100

direct: 9101

print: 9102

hold: 9103

12. Click OK to close the Configure Standard TCP/IP Port Monitor dialog box.

Completing the Windows 2000/XP/Server 2003 IPX (Novell) connection

Complete the setup for the IPX (Novell) connection as follows:

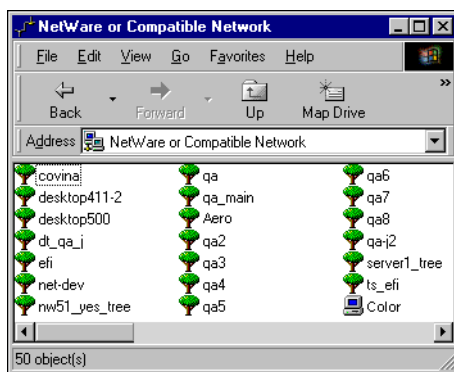
- Configure the Novell network and file server for handling Fiery EX2101 print jobs. The file server should be configured with a print server and print connection for the Fiery EX2101. For details, see your NetWare documentation.
- Prepare the Fiery EX2101 for IPX printing.
- Set up the IPX connection on the computer.

NOTE: NetWare protocols (NWLink IPX/SPX Compatible Transport) and NetWare client services should already be installed on the Windows 2000/XP/Server 2003 computer.

TO SET UP IPX (NOVELL) PRINTING FOR WINDOWS 2000/XP/SERVER 2003

1. **Double-click My Network Places.**
2. **Double-click NetWare or Compatible Network.**
A list of NetWare servers is displayed.
3. **Double-click the NetWare Tree or File Server on which the network administrator defined a print connection for the Fiery EX2101.**

To see the print connections, you may have to log on to the file server.



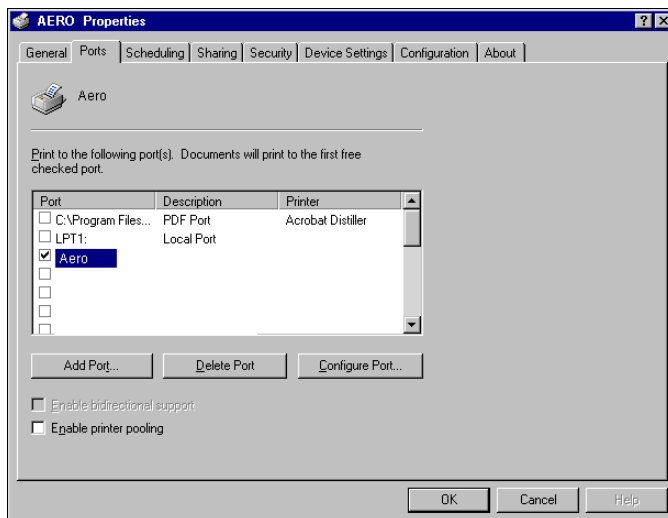
4. **Double-click the print connection defined for the Fiery EX2101.**

5. If the NetWare server does not have a suitable driver for the Fiery EX2101, you may be prompted to set up the printer on your computer. Click Yes.
6. Click OK to install the Fiery EX2101 PostScript printer driver.
7. Follow the procedure starting with [step 6](#) on [page 1-14](#).

When installation is complete, a new printer window appears, with the name of the print queue on the NetWare server.

8. Choose Properties from the File menu and click the Ports tab.

Verify that the connection to the NetWare queue is listed and selected as a port for the Fiery EX2101.



9. Click the General tab and then click Print Test Page.
10. In the printer Job Notes window, enter user and job identification information and click OK.

The Test Page remains listed in the queue window until it is printed.

The Fiery EX2101 polls the NetWare server for print jobs in the print connection defined for the Fiery EX2101. When you print, your PostScript files are spooled to that connection and transmitted over the queue "port" to the Fiery EX2101.

Setting up SMB printing on Windows 2000/XP/Server 2003

SMB printing (also known as Windows printing) allows you to install the printer driver and associated files, and print from your computer to a particular print connection (Hold, Print, or Direct) on the Fiery EX2101. These instructions assume you have installed the TCP/IP protocol and Client for Microsoft Networks.

Each connection (Hold, Print, or Direct) requires a new printer driver and printer description file. To set up printing to a second or third print connection, repeat the procedure following, “[To set up SMB printing on Windows 2000/XP/Server 2003](#)”. If you install more than one printer, give each a descriptive name during printer driver installation, such as Aero-Print or Aero-Hold, so you can easily identify printers.

BEFORE YOU BEGIN

- **Configure the Fiery EX2101 for SMB printing in Network Setup>Service Setup>Windows Setup.**

SMB printing is referred to as Windows Printing in Setup, on the Control Panel Map, and on the Configuration page. For more information, see the [Configuration Guide](#).

TO SET UP SMB PRINTING ON WINDOWS 2000/XP/SERVER 2003

1. **Open My Network Places.**
2. **Browse for the printer you want to print to.**

The printer name you are browsing for is the name entered in Network Setup>Service Setup>Windows Setup>Server Name. For more information, see the Configuration page.

The amount of network traffic determines the amount of time required for the Browse function.

NOTE: You can also locate the printer using the Search feature on your Windows computer. Right-click My Network Places and click Search for Computers. Enter the name of the printer, and click Search Now.

If you cannot locate your Fiery EX2101, contact your network administrator.

3. **Double-click the name of the Fiery EX2101 to display enabled print connections.**

You must now create a printer port and install the printer driver from the User Software CD.

4. **Double-click Add Printer and click Next.**
5. **Click Local Printer and click Next.**
6. **Click Create a New Port, and choose Local Port from the menu. Click Next.**
7. **In the Port Name dialog box, enter the name of the Fiery EX2101, followed by the printing connection, and then click OK.**

Enter the port name as follows: \\Aero\print where Aero is the name of the Fiery EX2101 and print is the printing connection.



8. **In the dialog box displaying lists of manufacturers and printers, click Have Disk.**
You will now install the printer driver from the User Software CD.
9. **Enter the name of the CD-ROM drive and browse to the English\Prntdrv\Ps_drvr\Win_2K_XP folder.**
10. **Make sure "Oemsetup.inf" or "Oemsetup" is selected and click Open.**
11. **Verify the path is correct in the Install From Disk dialog box and click OK.**
12. **Follow the on-screen instructions.**

For more information, see ["To install the PostScript or PCL printer driver for Windows 2000/XP/Server 2003"](#) on page 1-26.

Setting up IPP printing with Windows 2000/XP/Server 2003

With Internet Printing Protocol (IPP), print jobs are sent to the Fiery EX2101 over the Internet.

IPP printing is supported directly for Windows 2000/XP/Server 2003 computers. IPP printing is not supported on Windows NT 4.0.

NOTE: The IPP setup procedures are performed after installing the appropriate printer drivers. For details, see “[To install the PostScript or PCL printer driver for Windows 2000/XP/Server 2003](#)” on page 1-26.

BEFORE YOU BEGIN

1. **Prepare the Fiery EX2101 for TCP/IP printing.**
2. **Make sure the Fiery EX2101 is configured for IPP printing.**
For more information, see the [Configuration Guide](#).
3. **Specify the printing destination on your computer.**

TO SET UP IPP PRINTING WITH WINDOWS 2000/XP/SERVER 2003

1. **On Windows 2000, click Start, choose Settings, and then choose Printers. On Windows XP, click Start, and choose Printer and Faxes.**
2. **Double-click the Add Printer icon and click Next.**
3. **Select Network printer and click Next.**
4. **Select “Connect to a printer on the Internet or on your intranet.” Enter an IP address or computer name in the URL window.**

The URL for the printer is the IP address, or DNS name, followed by “ipp” and the connection you want to print to (print, hold, or direct). Insert slashes between the different elements, for example, <http://10.10.10.150/ipp/print>.

5. **Click Next.**

The Connect to Printer window appears.

6. **Click OK.**

The Add Printer Wizard dialog box appears.

7. **If you are installing the PostScript printer for Windows 2000/XP/Server 2003 for the first time, follow the procedure described on [page 1-26](#).**

If you have already installed the printer driver on your computer, select the appropriate names from the lists of manufacturers and printers.

8. **Click OK.**

9. **Specify whether you want to make the Fiery EX2101 the default printer and click Next.**

10. **Click Finish.**

Installing Fiery EX2101 software

From the User Software CD, you can install the following Fiery utilities and user software:

- Fiery Downloader
- Fiery VDP Resource Manager
- Hot Folder application (optional)
- Fiery Spooler
- EFI Job Monitor
- Fiery Printer Delete Utility
- Command WorkStation
- DocBuilder Pro (available as an option)

NOTE: In order to use DocBuilder Pro, you must install Acrobat 5.0 or later and the DocBuilder Pro dongle from the DocBuilder Pro option kit. To install Acrobat, see [“Adobe Acrobat”](#) on page 1-43.

The utilities are supported on Windows computers and must be separately installed on each user's computer. The installation of each utility is similar. Before you begin each installation, determine where you want to install each item on your hard disk. Otherwise, the software is placed by default in the Fiery folder inside the Programs folder.

TO INSTALL FIERY EX2101 SOFTWARE

1. **Open the appropriate folder for the software you want to install.**
2. **Double-click the Setup.exe icon.**
3. **Follow the instructions in the Setup dialog boxes to complete installation.**

Adobe Acrobat

In Command WorkStation, the DocBuilder Pro feature (available as an option) and PitStop software plug-in work with Adobe Acrobat 5.0. To use DocBuilder Pro, you must install Adobe Acrobat 5.0, the PitStop plug-in, and Command WorkStation. If you have purchased the DocBuilder Pro option, the Acrobat application is included on the Adobe Acrobat for DocBuilder Pro CD.

NOTE: If Adobe Acrobat is installed after Command WorkStation, you may be required to restart Command WorkStation in order to use DocBuilder Pro.

For more information about Adobe Acrobat for Windows, see the Readme.pdf file on the Adobe Acrobat for DocBuilder Pro CD.

TO INSTALL ACRBAT

1. **Insert the Adobe Acrobat CD in the CD-ROM drive.**
The Adobe Acrobat Welcome screen appears.
2. **Click Next and follow the on-screen instructions.**

Using Fiery EX2101 software for the first time

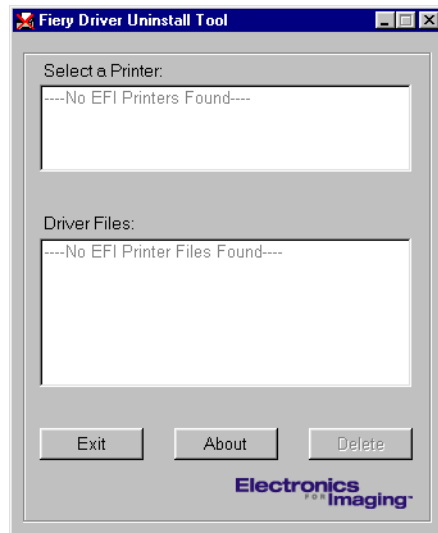
Before you can use the newly installed software, you must configure the connection to the Fiery EX2101.

Fiery Printer Delete Utility is installed and used locally, so connection to the Fiery EX2101 is not required before using the software.

TO USE FIERY PRINTER DELETE UTILITY

1. Click **Start**, choose **Programs**, and then choose **Fiery**.
2. Click **FieryPrinterDeleteUtility**.

The Fiery Driver Uninstall Tool dialog box appears. If any Fiery EX2101 printer drivers are found on your computer, they are displayed.



3. To delete any of the displayed printers, select the printer name and click **Delete**.
4. Click **OK** to delete the selected printer driver.
5. Click **OK** to restart, or, to delete another printer driver, click **Cancel** to return to the Fiery Driver Uninstall Tool dialog box. Restart your computer when you finish deleting printer drivers.

Configuring the connection for Fiery utilities

The first time you start one of the Fiery utilities, you must configure the connection to the Fiery EX2101. Similar configuration is used for all Fiery utilities, so a change in one configuration affects all the other connections. Configuration for Fiery utilities is described in the procedures that follow.

For configuration of specific Fiery utilities, see the following:

- “[Configuring the connection for Fiery Downloader, Fiery Spooler, and Command WorkStation](#)” on page 1-45
- “[Configuring the connection for Fiery VDP Resource Manager](#)” on page 1-51

BEFORE YOU BEGIN

- **Print the Configuration page from the Control Panel.**

This page contains information necessary for configuring the connection, such as the IP address. For TCP/IP installations, you can use the DNS name of the Fiery EX2101 instead of the IP address. Make sure the Fiery EX2101 is already registered in a Domain Name Server (DNS) on your network. For more information, see your Windows system documentation.

Configuring the connection for Fiery Downloader, Fiery Spooler, and Command WorkStation

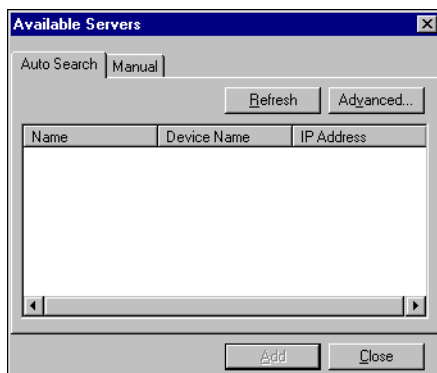
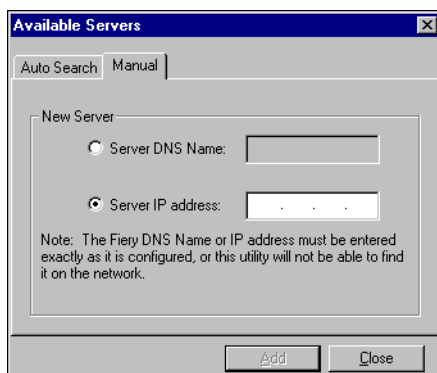
The first time you start Fiery Downloader, Fiery Spooler, or Command WorkStation, you must configure the connection to the Fiery EX2101.

TO CONFIGURE THE CONNECTION FOR COMMAND WORKSTATION**1. Print a Configuration page.**

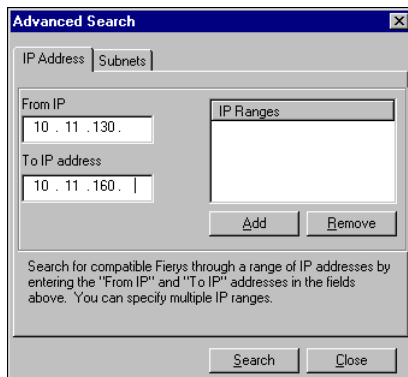
The information on this page helps you locate the Fiery EX2101 if it is not on the same local subnet as your computer.

2. Start Command WorkStation.

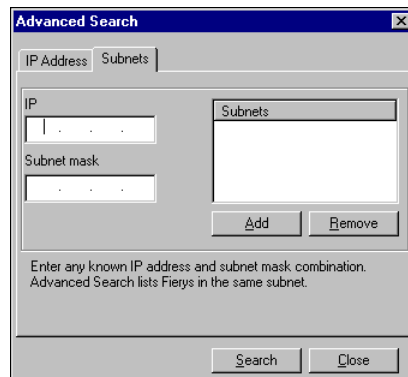
The Available Servers dialog box appears. All servers found in the local subnet are displayed.

**3. If no Fiery EX2101 servers were found, click the Manual tab to search by DNS name or IP address. Click Add to add the server to the Available Servers list.**

4. Click the Auto Search tab and then click Advanced to search by either a range of IP addresses or the IP address and subnet mask.



The 'Advanced Search' dialog box is shown with the 'IP Address' tab selected. It contains two input fields: 'From IP' with the value '10 . 11 . 130 .' and 'To IP address' with the value '10 . 11 . 160 .'. To the right is an empty 'IP Ranges' list box with 'Add' and 'Remove' buttons. A text box at the bottom explains: 'Search for compatible Fierys through a range of IP addresses by entering the "From IP" and "To IP" addresses in the fields above. You can specify multiple IP ranges.' 'Search' and 'Close' buttons are at the bottom.



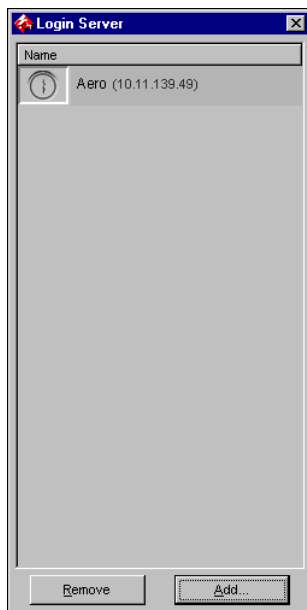
The 'Advanced Search' dialog box is shown with the 'Subnets' tab selected. It contains two input fields: 'IP' with the value '1 . . .' and 'Subnet mask' with the value '. . .'. To the right is an empty 'Subnets' list box with 'Add' and 'Remove' buttons. A text box at the bottom explains: 'Enter any known IP address and subnet mask combination. Advanced Search lists Fierys in the same subnet.' 'Search' and 'Close' buttons are at the bottom.

5. Click Search.

All available servers are displayed in the Available Servers list.

6. Select the Fiery EX2101 server you want to use and click Add.

The selected Fiery EX2101 server is displayed in the Login Server dialog box.



The 'Login Server' dialog box is shown. It has a list box titled 'Name' containing one entry: 'Aero (10.11.139.49)' with a small icon to its left. At the bottom are 'Remove' and 'Add...' buttons.

7. Click the server name.

The Log In dialog box appears.

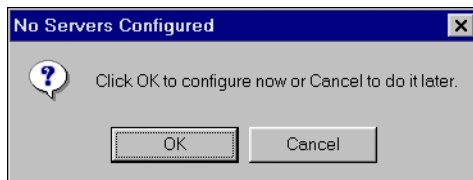
**8. Select Administrator, Operator, or Guest and click Log In.**

Your computer is connected to the server.

To modify the Command WorkStation connection to the Fiery EX2101, you must remove the server from the Login Server list and follow the preceding procedure for configuring the connection.

TO CONFIGURE THE CONNECTION FOR FIERY UTILITIES

- 1. Start the utility for which you want to configure a connection.**
- 2. Click OK.**



3. Enter the appropriate information for the Fiery EX2101.

Nickname—Enter a name for the Fiery EX2101. This name does not have to match the actual Server Name of the Fiery EX2101.

NOTE: The nickname cannot contain any of the following seven characters:
[] _ " ' <space> <tab>

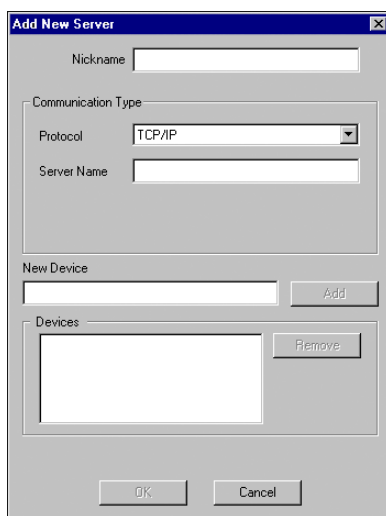
Protocol—Choose the type of network protocol you are using from the menu.

NOTE: Fiery utilities are not supported over IPX/SPX. Command WorkStation is supported on Windows computers over TCP/IP.

Server Name—Enter the IP address (or DNS name) of the Fiery EX2101.

New Device—Enter the name of the device the Fiery EX2101 is connected to: EX2101.

NOTE: The New Device name is case-sensitive, type EX2101 *exactly* as shown.



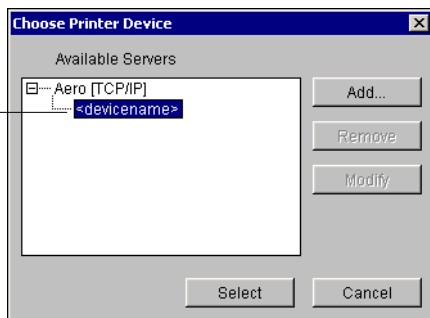
For TCP/IP networks

4. When you have entered all the information, click Add.

5. With the device name (EX2101) selected in the Devices list, click OK.

The Fiery EX2101 is displayed in the list of available servers. The first line of the entry displays the nickname you gave the server, followed by the protocol you chose. The second line displays the device name.

Device name of the
Fiery EX2101 (EX2101)



6. With the device name selected in the list of Available Servers, click Select to begin using the utility.

Modifying the configuration

Edit the configuration whenever there is any change to your Fiery EX2101 server or network, such as a server name or IP address. If you change Fiery EX2101 Setup information, do so before reconfiguring the connection.

TO MODIFY THE CONFIGURATION FOR FIERY UTILITIES

1. To edit information for an Fiery EX2101 in the list of available servers, select the Fiery EX2101 by its nickname and click Modify.
2. Make the necessary changes in the Modify Server Settings dialog box and click OK.
3. To add a new Fiery EX2101 to the list of available servers, click Add.
Configure the Add New Server dialog box as outlined in steps 3 through 5 in the procedure on [page 1-48](#).
4. To remove an Fiery EX2101, select the Fiery EX2101 by its nickname and click Remove.
NOTE: The nickname cannot be modified.

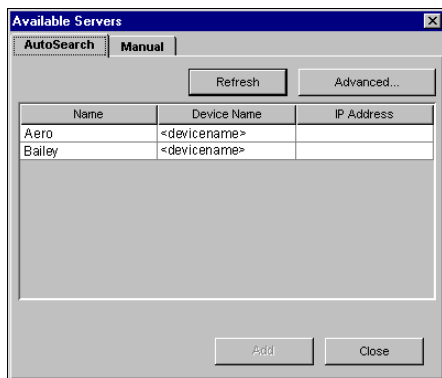
Configuring the connection for Fiery VDP Resource Manager

The Fiery VDP Resource Manager allows you to view and delete all global objects used in variable data printing. For more information, see the *Printing Guide*.

TO CONFIGURE THE CONNECTION FOR FIERY VDP RESOURCE MANAGER

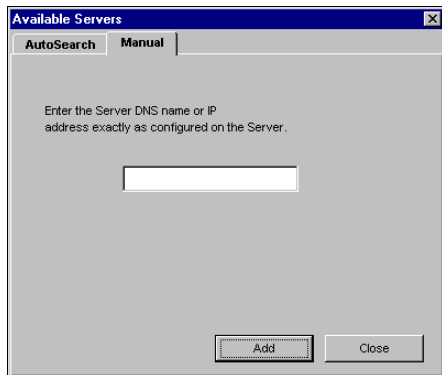
1. Click **Start**, choose **Programs**, and then click **Fiery VDP Resource Manager** in the **Fiery** folder.

The Available Servers dialog box appears with all Fiery EX2101 servers in the local subnet displayed.

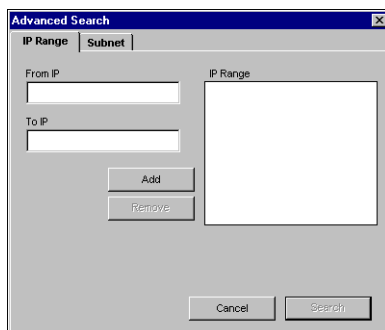


2. To locate a server by its IP address, click the **Manual** tab. Enter the IP address and click **Add**.

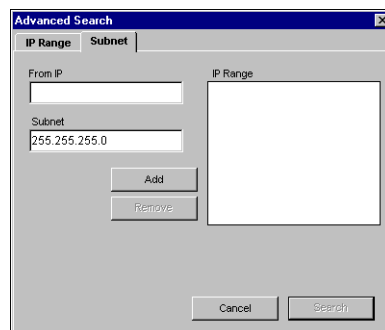
The server appears in the Available Servers dialog box.



3. To locate the Fiery EX2101 either by a range of IP addresses or by the IP address and subnet mask, click the Auto Search tab and then click Advanced.
4. Click the IP Range tab or the Subnet tab.



The image shows the 'Advanced Search' dialog box with the 'IP Range' tab selected. It features two input fields on the left: 'From IP' and 'To IP'. To the right of these fields is a large empty box labeled 'IP Range'. Below the input fields are 'Add' and 'Remove' buttons. At the bottom of the dialog are 'Cancel' and 'Search' buttons.



The image shows the 'Advanced Search' dialog box with the 'Subnet' tab selected. It features two input fields on the left: 'From IP' and 'Subnet'. The 'Subnet' field contains the text '255.255.255.0'. To the right of these fields is a large empty box labeled 'IP Range'. Below the input fields are 'Add' and 'Remove' buttons. At the bottom of the dialog are 'Cancel' and 'Search' buttons.

5. To search by a range of IP addresses, enter the information in the From IP and To IP fields. Click Add and then click Search.

To search by IP address and subnet mask, enter the information in the From IP and Subnet fields. Click Add and then click Search.

All available servers will be displayed in the Available Servers dialog box.

6. Select the servers you want and click Add.

All connected servers are displayed in the Fiery Servers list in the Fiery VDP Resource Manager dialog box.

To use the Fiery VDP Resource Manager, see the *Printing Guide*.

TO MODIFY THE CONFIGURATION FOR FIERY VDP RESOURCE MANAGER

1. Click **Start**, choose **Programs**, and then click **Fiery VDP Resource Manager** in the **Fiery** folder.

All servers you connected to previously are displayed.

2. To remove a server, choose **Disconnect** from the **Server** menu.
3. To add a server, choose **Connect** from the **Server** menu, and follow the procedure for configuring the connection on [page 1-51](#).

Configuring a connection for Job Monitor

Use **Job Monitor** to monitor the status of **Fiery EX2101** servers and view information about the print jobs sent to them.

For information on using **Job Monitor**, see the **Job Monitor** help file by clicking **Help** in the **Job Monitor** menu bar.

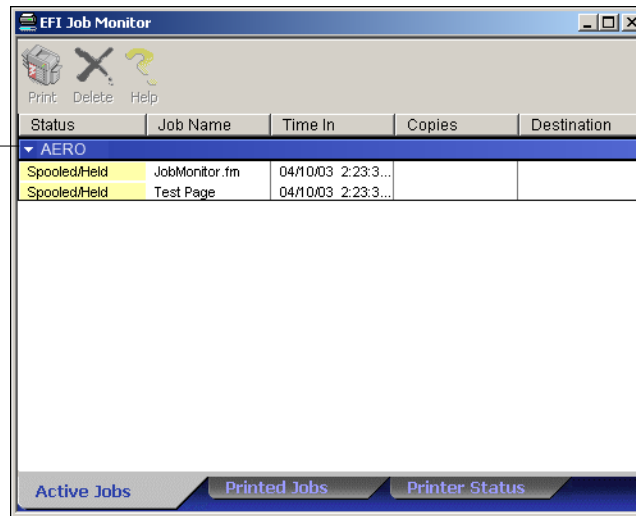
TO CONFIGURE THE CONNECTION TO FIERY EX2101 SERVERS


1. On **Windows 98/Me/NT 4.0/2000**, click **Start**, choose **Settings**, and then choose **Printers**.
On **Windows XP**, click **Start** and choose **Printer and Faxes**.
On **Windows Server 2003**, click **Start**, choose **Control Panel**, and then choose **Printer and Faxes**.
2. In the **Printers** window, select the icon for the **Fiery EX2101 PostScript** printer driver.
3. Choose **Properties** from the **File** menu.

4. Click the Printer Status tab.**5. Click Launch Job Monitor.**

Job Monitor opens a utility window on the screen and establishes a connection to the Fiery EX2101. If you have installed and configured printer drivers for more than one copier, Job Monitor automatically establishes connections to all the Fiery EX2101 engines.

Server bar

**6. Click Update.****7. Click OK.**

The Job Monitor icon () appears both on the desk top and in the Windows taskbar of your computer.

Installing the printer description files for Windows

The User Software CD contains printer description files for popular Windows applications. PageMaker 5.0, 6.x, and 7.0 do not support automatic installation of printer description files from the Printers or Printers and Faxes Control Panel. To make the Fiery EX2101 available in the Print and Page Setup dialog boxes of this application, copy printer description files to the appropriate location.

TO COPY THE PRINTER DESCRIPTION FILES

1. **On the User Software CD, open the English\Prntdrv\Ps_drvr folder. Select the folder that corresponds to the system you are using.**
Windows 98/Me—English\Prntdrv\Ps_drvr\Win_9x_ME
Windows NT 4.0—English\Prntdrv\Ps_drvr\Win_NT4x
Windows 2000/XP—English\Prntdrv\Ps_drvr\Win_2K_XP
2. **Copy the printer description file for your Fiery EX2101 to the appropriate location.**

If you use	Copy this file	To this location
PageMaker 5.0 or later	EF4X4325.PPD	For PageMaker 5.0, \\ALDUS\USENGLSH\PPD4 For PageMaker 6.0, \\PM6\RSRC\USENGLSH\PPD4 For PageMaker 6.5, \\PM65\RSRC\USENGLSH\PPD4 for PageMaker 7.0, \\PM7\RSRC\USENGLSH\PPD4

Chapter 2: Installing User Software on a Mac OS Computer

This chapter describes the procedures for installing the EX2101 user software and setting up printing on a Mac OS computer.

The general steps for installing the software are as follows:

- Install the PostScript printer driver and printer description file.
- Set up the Fiery EX2101 in the Chooser (Mac OS 9) and the Print Center (Mac OS X).
- Install the Fiery utilities (Fiery Downloader, Fiery VDP Resource Manager, and Fiery Spooler).
- Configure the connection for Fiery utilities.
- Install the printer and screen fonts.

To print from a Mac OS computer, the PostScript option or the hard disk option must be installed to the Fiery EX2101.

In addition to using the User Software CD, you can download printer drivers from the Fiery EX2101 with the Installer WebTool (if the site administrator has enabled Internet access to the Fiery EX2101). For instructions, see [“Using the Installer WebTool”](#) on page 3-2. After you download the printer files, the installation process is identical to installing from the User Software CD.

Setting up the Fiery EX2101 as a PostScript printer

To set up the Fiery EX2101 as a PostScript printer, you must install the PostScript printer driver and the printer description file that corresponds to your copier. The PostScript printer driver and printer description files are provided on the User Software CD. Printer drivers provide a way to communicate information on print jobs between your applications, the Fiery EX2101, and any other PostScript printer connected to your computer.

Setting up Mac OS 9 printer drivers and printer description files

When you install printer files from the User Software CD or printer files downloaded using the Installer WebTool, use the following procedures.

TO INSTALL THE ADOBEPS PRINTER DRIVER AND PRINTER DESCRIPTION FILE FOR MAC OS 9

- 1. Quit all open applications.**

After you have completed installation, restart your computer.

- 2. On the User Software CD, open the English:Printer Driver folder.**

If you are installing from files you downloaded using the Installer WebTool, open the Printer Driver folder on your hard disk.

- 3. Double-click the AdobePS Installer icon.**

- 4. Follow the on-screen instructions.**

The AdobePS Installer installs the Adobe PostScript printer driver and the printer description file that corresponds to the Fiery EX2101.

NOTE: If you operate the Fiery EX2101 in a copy shop, quick print shop, or service bureau, provide your customers with copies of the printer driver, printer description file, as well as any relevant documentation. This ensures that jobs they create and print to files are properly formatted for printing to the Fiery EX2101.

Setting up the Fiery EX2101 in the Chooser

After you install the Adobe PostScript printer driver and printer description file, you must set up the Fiery EX2101 in the Chooser in order to take full advantage of its features. For details, see [“Setting up the Fiery EX2101 as a PostScript printer”](#) on page 2-1. This section describes how to set up the Fiery EX2101 with the AdobePS printer driver.

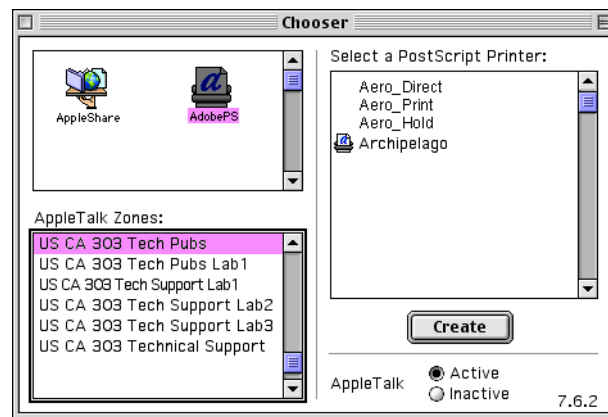
TO SET UP THE FIERY EX2101 IN THE CHOOSER**1. Select Chooser from the Apple menu.**

Make sure AppleTalk is set to Active.

2. Select the correct AppleTalk Zone, if necessary.**3. Click the AdobePS icon.**

The Fiery EX2101 is displayed in the Select a PostScript Printer list in the form of <server name>_<print connection>.

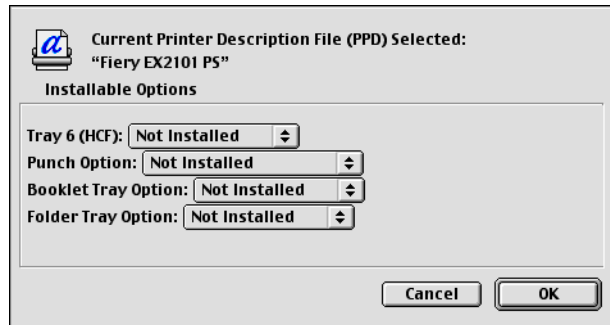
NOTE: Only the print connections (Direct, Hold, and Print) that have been enabled in Setup are displayed in the Chooser.

**4. Select an Fiery EX2101 connection from the “Select a PostScript Printer” list, and click Create.**

Select the correct printer description file for your printer.

NOTE: You must set up each print connection separately. Repeat this step for all enabled connections.

5. Select the icon that appears next to the newly installed Fiery EX2101 and click Setup.
6. Click Configure in the dialog box that appears.
7. In the Installable Options dialog box, choose the appropriate settings from the menus and click OK.



Tray 6 (HCF)—Not Installed, Tray 6 (HCF)

Punch Options—Not Installed, 2/4 Hole Punch Unit, 3 Hole Punch Unit

Booklet Tray Option—Not Installed, Installed

Folder Tray Option—Not Installed, Installed

8. Close the Chooser.

Setting up Mac OS X printer drivers and printer description files

The User Software CD contains the following software for Mac OS X:

- PPD Installer—installs the PostScript Printer Description files (PPDs) necessary to print from Mac OS X.
- Language folders—contain copies of the printer description files that are installed by the PPD Installer. It is not necessary to open these folders or install them manually on your computer. The appropriate files are installed by the PPD Installer.

NOTE: If you have OS 9 and OS X on the same machine and you install PPD files, OS X places a copy of the PPDs into the OS 9 System Folder:Extensions:Printer Descriptions folder.

NOTE: Fiery utilities, as well as Fiery WebTools, are not supported on Mac OS X.

TO INSTALL THE PRINTER DESCRIPTION FILES FOR MAC OS X

- 1. Quit all open applications.**
- 2. Make sure that Print Center is not running on your computer.**

Print Center updates the list of available printers when it restarts. If a printer description file is added while Print Center is running, you cannot select the associated printer model until you restart Print Center.
- 3. Insert the User Software CD into the CD-ROM drive.**
- 4. Open the Printer Driver folder inside the OS X folder on the User Software CD.**
- 5. Click the OS X Installer icon to start installing printer description files.**
- 6. Follow the on-screen instructions.**

The OS X Installer installs the printer description files that correspond to the Fiery EX2101.

After you have completed installation, restart your computer.

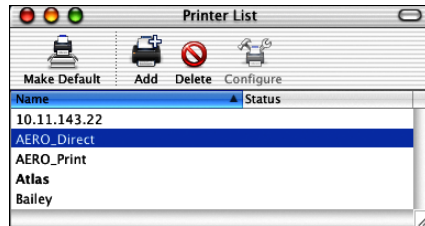
Setting up the Fiery EX2101 in the Print Center

After you install the printer description files, you must set up the Fiery EX2101 in the Print Center in order to take full advantage of its features. This section describes how to set up the Fiery EX2101 and configure installable options. The PPD Installer installs all language files at the same time. The following procedures describe how to set up the Fiery EX2101 on a system using either English or a non-English language.

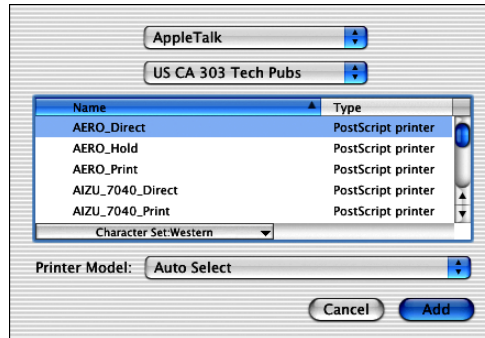
TO SET UP THE FIERY EX2101 IN THE PRINT CENTER ON AN ENGLISH SYSTEM

1. Double-click Print Center in 'Utilities' under Startup disk:Application.

The Print Center starts.

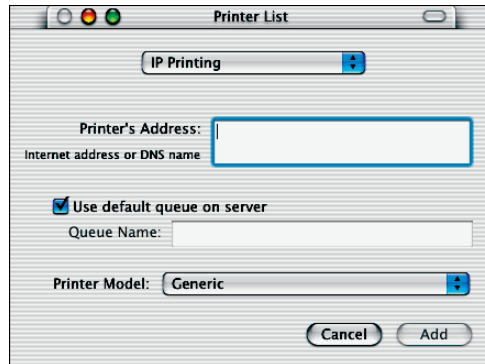


2. Click Add in the Printer List dialog box.
3. Choose AppleTalk or IP printing from the menu.
4. For AppleTalk, choose the AppleTalk Zone, and then choose the name of the Fiery EX2101.
If the zone is not listed as the Default Zone or one of the Recent Zones, select AppleTalk Network, and select the zone, and then click Choose.



For IP Printing, enter the IP address or DNS name of the printer for Printer's Address, clear Use default queue on server, and then enter the print connection for Queue Name.

NOTE: Enter the printer Queue Name for the print connection. You cannot use the same Queue Name for more than one printer.

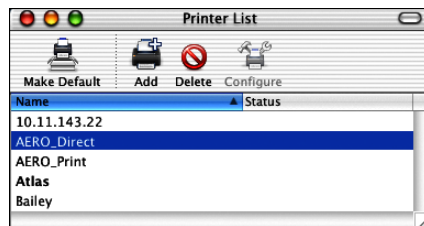


5. For Printer Model, select the appropriate manufacturer name, and then select the file for the Fiery EX2101 PPD.
6. Click Add.

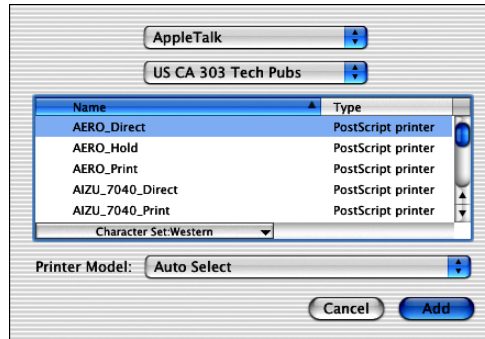
TO SET UP THE FIERY EX2101 IN THE PRINT CENTER ON A NON-ENGLISH SYSTEM

1. Double-click Print Center in 'Utilities' under Startup disk:Application.

The Print Center starts.

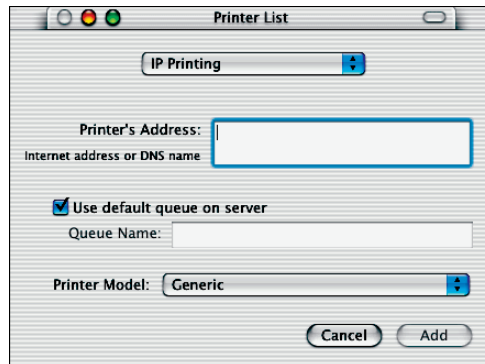


2. Click Add in the Printer List dialog box.
3. Choose AppleTalk or IP printing from the menu.
4. For AppleTalk, choose the AppleTalk Zone, and then choose the name of the Fiery EX2101.
If the zone is not listed as the Default Zone or one of the Recent Zones, select AppleTalk Network, and select the zone, and then click Choose.

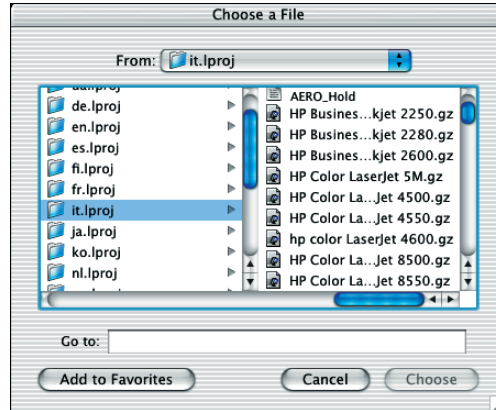


For IP Printing, enter the IP address or DNS name of the printer for **Printer's Address**, clear **Use default queue on server**, and then enter the print connection for **Queue Name**.

NOTE: Enter the printer Queue Name for the print connection. You cannot use the same Queue Name for more than one printer.



5. For Printer Model, select Other.



6. In the Choose a File dialog box, select the appropriate language file from the left column (see the following table), and the Fiery EX2101 name from the right column.

Language	File name
Dutch	nl.lpro
English	en.lproj
French	fr.lproj
German	de.lproj
Italian	it.lproj
Portuguese	pt.lproj
Spanish	es.lproj

NOTE: These files are located on your hard drive in System:Library:Printers:PPDs:Contents:Resources.

7. Click **Choose**.
8. Click **Add** in the **Printer List** window.

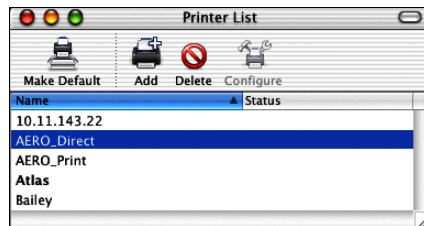
For more information about adding printers, see your Mac OS X documentation.

TO CONFIGURE INSTALLABLE OPTIONS

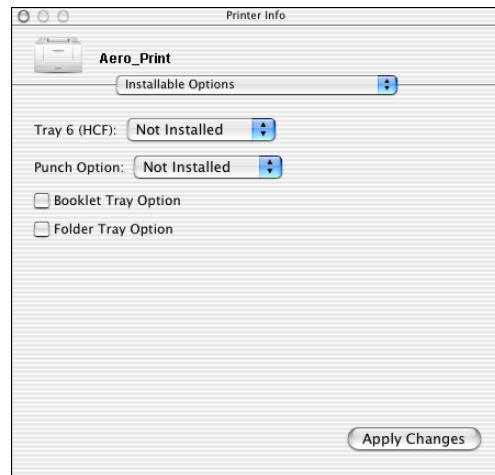
1. Double-click Print Center in 'Utilities' under Startup disk:Application.

The Print Center starts.

2. Select your printer in the Printer List.



3. Choose Show Info from the Printer menu.
4. Choose Installable Options from the menu.
5. In the Printer Info dialog box, choose the appropriate settings.



Tray 6 (HCF)—Not Installed, Tray 6 (HCF)

Punch Options—Not Installed, 2/4 Hole Punch Unit, 3 Hole Punch Unit

Booklet Tray Option—Not Installed, Installed

Folder Tray Option—Not Installed, Installed

6. Click Apply Changes.

Installing Fiery EX2101 software and fonts

The Mac OS installers function essentially the same for each type of software. Before you begin each installation, determine where you want to install each item on your hard disk. Otherwise, the software is placed by default as follows:

- Fiery Downloader and Fiery Spooler, Fiery VDP Resource Manager—"Fiery" folder
- Command WorkStation LE (for Mac OS X only)—Applications: CWS LE folder
- Fonts—System Folder: Fonts folder

For instructions on installing Fonts, see ["Fonts"](#) on page 2-25.

TO INSTALL MAC OS SOFTWARE

1. Insert the User Software CD in the CD drive and double-click the Installer icon of the item you want to install, then follow the instructions in the installer dialog boxes.
2. If prompted, click Quit to close the software installer.

TO UNINSTALL MAC OS SOFTWARE

1. Locate the System folder on your hard disk.
2. Inside the Extensions folder, locate MRJ Libraries and remove it or move it to another folder.
3. Inside the Apple Extras folder, locate Mac OS Runtime Java and remove it or move it to another folder.

4. **Restart your computer**

In order to use Fiery Spooler, you must have Mac OS Runtime for Java (MRJ) installed on your computer.

If you do not have the appropriate MRJ installed, the installer automatically initiates the MRJ installation process.

5. To Install MRJ, follow the instructions in the installer dialog boxes.

Installing MRJ on your computer

In order to use Fiery Downloader or Fiery Spooler, you must have Mac OS Runtime for Java (MRJ) installed on your computer.

If you do not have MRJ installed, the Fiery Downloader, or Fiery Spooler installer automatically initiates the MRJ installation process.

NOTE: For Mac OS X, only Classic Mode is supported.

TO INSTALL MAC OS RUNTIME FOR JAVA

1. **Open the MRJ folder on the User Software CD and double-click Installer.**
2. **Read the Apple Computer Inc. License Agreement and click Agree to install the software.**
3. **Click Install.**
4. **Click Quit.**

You are now ready to configure the connection to the Fiery EX2101.

We recommend that you install the MRJ provided on the User Software CD and use it with the Fiery EX2101 software.

If you have a newer version of MRJ (such as 2.2.5) already installed on your computer and experience some difficulty using the Fiery EX2101 software, either remove or relocate the MRJ files currently installed and reinstall the version of MRJ provided on the User Software CD.

TO UNINSTALL MAC OS RUNTIME FOR JAVA

1. **Locate the System Folder on your hard drive.**
2. **Inside the Extensions folder, locate MRJ Libraries and remove or move it to another folder.**

NOTE: If you find the “MRJ Enabler” file under Extensions, remove or move it to another folder.

3. **On Mac OS 8.6, locate the Apple Extras folder on your hard disk.**

On Mac 9.x, locate the Apple Extras folder inside the Applications folder on your hard disk.

4. **Inside the Apple Extras folder, locate Mac OS Runtime for Java and remove or move it to another folder.**
5. **Restart your computer.**

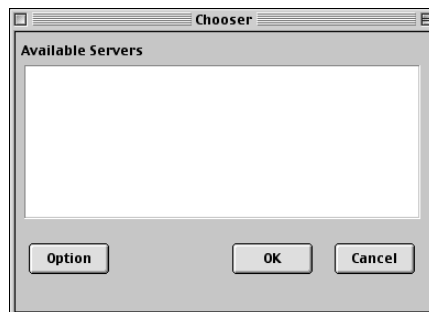
Configuring a connection for Fiery Spooler

Before you begin, print a Configuration page from the Control Panel and note the IP address of the Fiery EX2101.

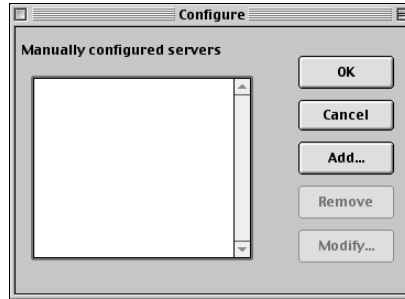
TO CONFIGURE THE CONNECTION FOR FIERY SPOOLER

1. **Start the utility by double-clicking its icon.**

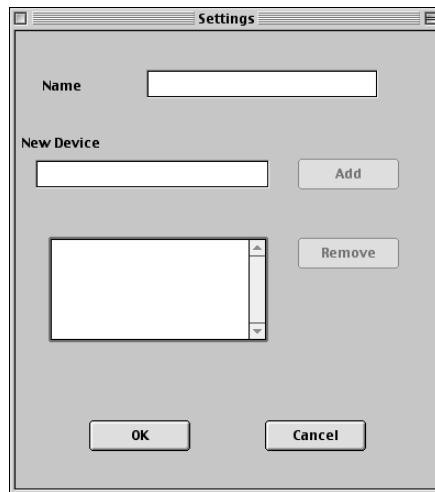
The Chooser dialog box appears.



2. Click Option.



3. Click Add.



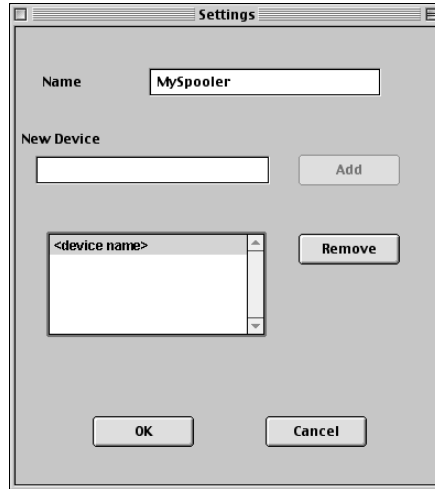
4. Enter the appropriate information for the Fiery EX2101.

Name—Enter the IP address (or DNS name) of the Fiery EX2101.

New Device—Enter the name of the device that the Fiery EX2101 is connected to: EX2101.

NOTE: This device name appears in the Printer Setup section of the Configuration page.

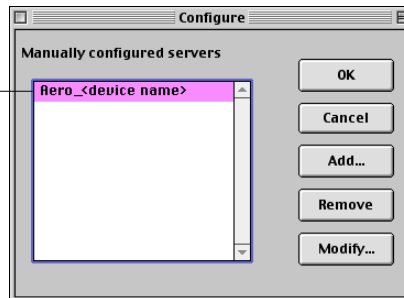
5. When you have entered all the information, click Add.



6. With the device name selected, click OK.

The Fiery EX2101 is displayed in a list of configured servers.

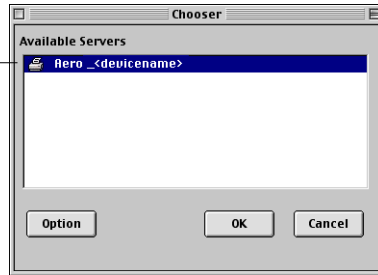
Fiery EX2101 name and
device name (EX2101)



7. Click **OK** in the **Configure** dialog box.

The Fiery EX2101 is displayed in a list of available servers.

Fiery EX2101 name and
device name (EX2101)



8. With the Fiery EX2101 selected in the list of available servers, click **OK** to begin using Fiery Spooler.

Modifying the configuration

Edit the configuration whenever there is any change to your Fiery EX2101 or network, such as an IP address or device change. Change the specific Fiery EX2101 Setup information before configuring the connection.

TO MODIFY THE CONFIGURATION

1. To edit information for an Fiery EX2101, select the Fiery EX2101 by its IP address or DNS name and click **Modify**. Edit information in the **Settings** dialog box as necessary, and click **OK**.
2. To add a new Fiery EX2101, click **Add**. Configure the **Settings** dialog box as outlined in steps 4 through 6 in the previous procedure.
3. To remove an Fiery EX2101, select the Fiery EX2101 by its IP address or DNS name, and click **Remove**.

The list of available servers reflects the modifications you have made.

Configuring a connection for Fiery Downloader

When you start Fiery Downloader, you must specify the connection to the Fiery EX2101.

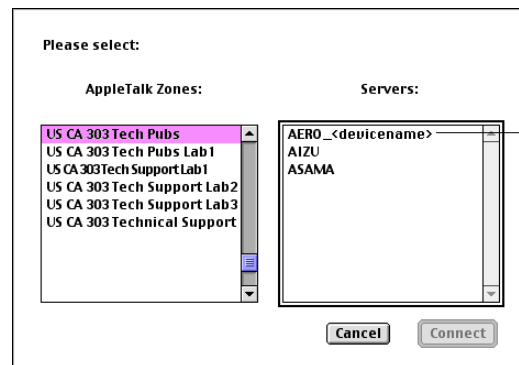
BEFORE YOU BEGIN

- **Print the Configuration page from the Control Panel and note the AppleTalk zone of the Fiery EX2101.**

TO SPECIFY AN FIERY EX2101 CONNECTION

1. **Double-click the Fiery Downloader icon.**
2. **Select the AppleTalk zone in which the Fiery EX2101 is located from the AppleTalk Zones list.**

The available servers are displayed in the Servers list.

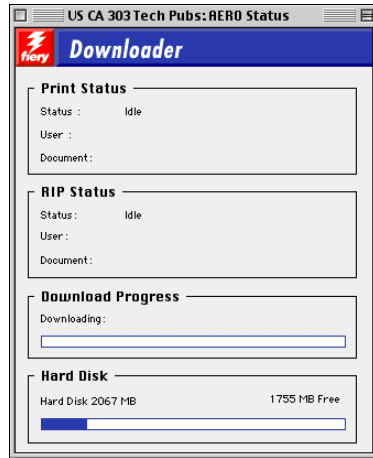


Fiery EX2101 name and device name (EX2101)

3. **Select the Fiery EX2101 in the Servers list.**

4. Click Connect.

The Fiery Downloader dialog box appears.



For information on how to use Fiery Downloader, see the *Printing Guide*.

Configuring the connection for Command Workstation LE for Mac OS X

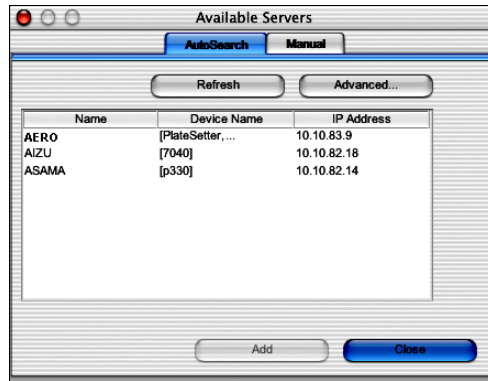
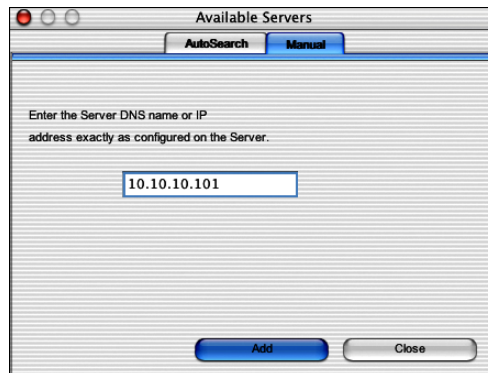
The first time you start Command Workstation LE, you are prompted to configure the connection to the Fiery EX2101.

TO CONFIGURE THE CONNECTION FOR COMMAND WORKSTATION LE**1. Print a Configuration page.**

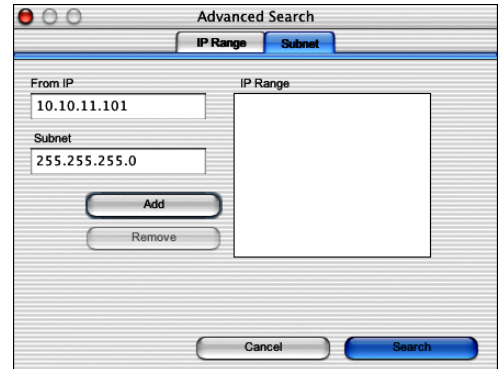
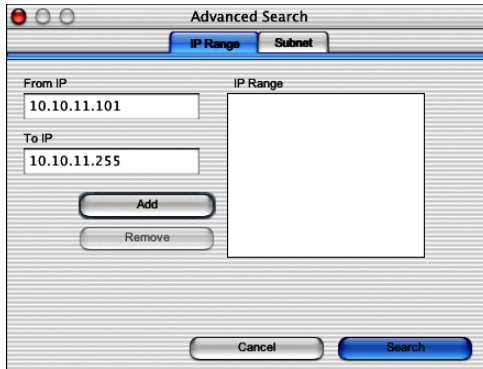
The information on this page helps you locate the Fiery EX2101 if it is not on the same local subnet as your computer.

2. Start Command WorkStation LE.

The Available Servers dialog box appears. All servers found in the local subnet are displayed.

**3. If no Fiery EX2101 servers were found, click the Manual tab to search by DNS name or IP address. Click Add to add the server to the Available Servers list.**

4. Click the **Auto Search** tab and then click **Advanced** to search by either a range of IP addresses or the IP address and subnet mask.



5. Click **Search**.

All available servers are displayed in the *Available Servers* list.

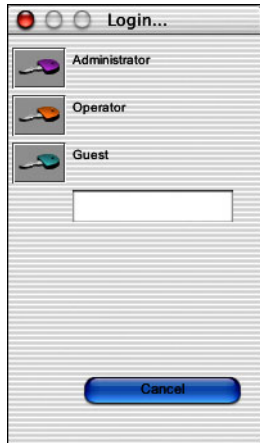
6. Select the **Fiery EX2101** server you want to use and click **Add**.

The selected Fiery EX2101 server appears in the *Login Server* dialog box.



7. Click the server name.

The Log In dialog box appears.



8. Select a key for Administrator, Operator, or Guest.

Your computer is connected to the server.

To modify the Command WorkStation connection to the Fiery EX2101, you must remove the server from the Login Server list and follow the preceding procedure for configuring the connection.

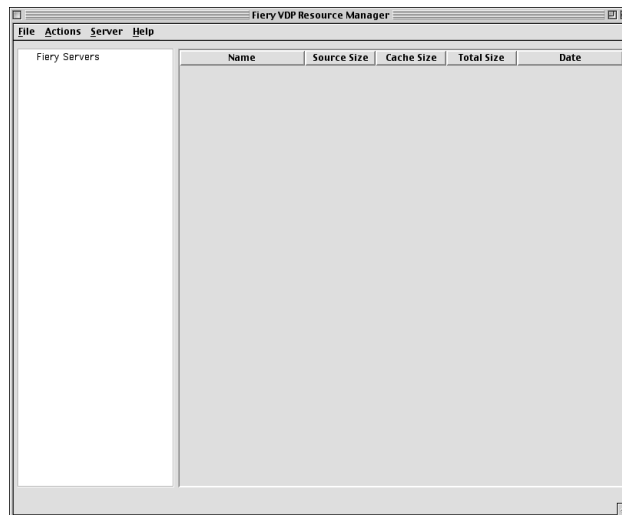
Configuring the connection for Fiery VDP Resource Manager

The Fiery VDP Resource Manager allows you to view and delete all global objects used in variable data printing. For more information, see the [Printing Guide](#).

TO CONFIGURE THE CONNECTION FOR FIERY VDP RESOURCE MANAGER

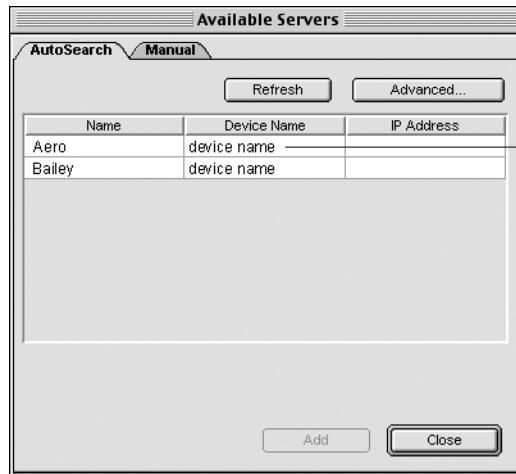
1. Click **Fiery VDP Resource Manager** in the **Fiery** folder.

All servers you connected to previously are displayed. If no servers are displayed, you can locate and add them.

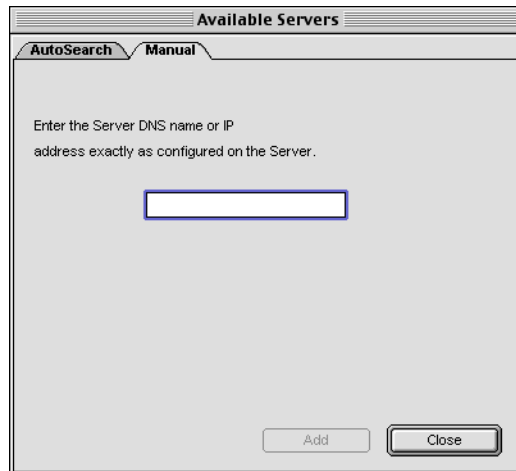


2. Choose Connect from the Server menu.

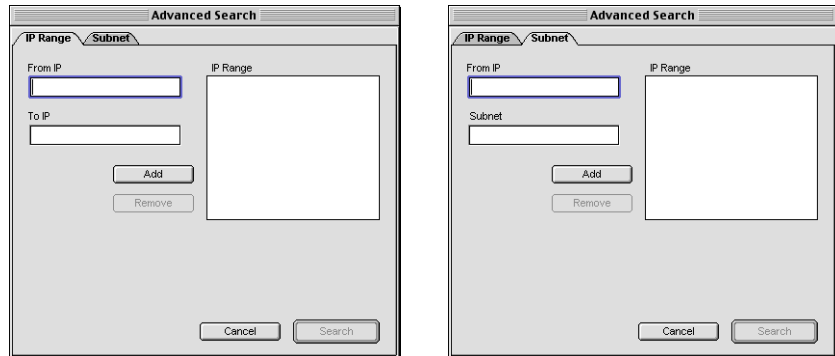
The Available Servers dialog box appears with all Fiery EX2101 servers located in the subnet displayed.



Fiery EX2101 name and device name (EX2101)

3. Click the Manual tab to locate a Fiery EX2101 server by its IP address. Enter the IP address and click Add.

4. Click the **Auto Search** tab and then click **Advanced** to search by either a range of IP addresses or the IP address and subnet mask.



5. Click **Add** and then click **Search**.

All VDP servers located appear in the Available Servers dialog box.

6. Select the servers you want and click **Add**.

The selected servers appear in the list of VDP servers in the Fiery Variable Data Resource Manager dialog box.

Fonts

The Fonts installer on the User Software CD includes screen and printer fonts that correspond to the 136 built-in PostScript printer fonts on the Fiery EX2101. The Font installer copies both kinds of fonts to the System Folder:Fonts folder on your hard disk. To be available to applications, the screen fonts must remain in the System Folder:Fonts folder. You can copy the printer fonts to a folder of your choice.

NOTE: In the System Folder:Fonts folder, when displayed by Kind, screen fonts are displayed as type, “Font Suitcase”, and PostScript printer fonts are displayed as type, “PostScript font.”

TO INSTALL SCREEN AND PRINTER FONTS

1. **On the User Software CD, double-click the Fonts icon to start the Fonts installer.**
2. **Click Install.**

By default, the fonts are installed to the System Folder:Fonts folder on your hard disk.

If you have any applications open, you must quit and restart them before the newly installed screen fonts are available.

Chapter 3: Fiery WebTools

Fiery WebTools allow you to manage your Fiery EX2101 remotely from the Internet or from your company's intranet. The Fiery EX2101 has its own home page, from which you can select a variety of functions.

For more information on using Fiery WebTools, see the *Printing Guide*.

Setting up Fiery WebTools

In order for network users to access and use Fiery WebTools, you must set specific Fiery EX2101 options in Network Setup and Printer Setup. You must also prepare each user's computer to communicate with the Fiery EX2101 over the Internet or intranet.

For more information about Network Setup and Printer Setup, see the *Configuration Guide*.

TO SET UP CLIENT WORKSTATIONS FOR FIERY WEBTOOLS

1. **Enable TCP/IP networking.**
2. **Make sure the workstation has a valid, unique IP address.**
3. **Make sure a supported Internet browser is installed on the computer.**
For more information on supported browsers, see the *Quick Start Guide*.
4. **Make sure Java is enabled in your Internet browser.**

For more information on setting up the Fiery EX2101 and the network, see the *Configuration Guide*.

Using the Installer WebTool

The Installer WebTool allows you to download installers for printer drivers, user software, and user documentation directly from the Fiery EX2101 to your computer.

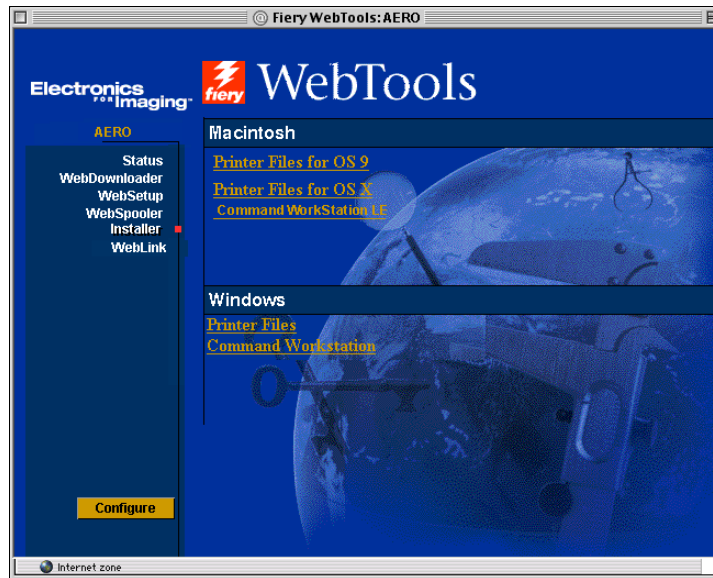
TO DOWNLOAD PRINTER DRIVER FILES WITH THE INSTALLER WEBTOOL

1. Start your Internet or intranet browser and enter the DNS name or IP address of the Fiery EX2101.

2. Select a login level, enter a password if required, and then click OK.

No password is required to log in as Guest. If the Administrator has configured Guest access, any user has full access to the Installer WebTool while logged in as Guest.

3. Click Installer.



4. Under the name of your operating system, click the name of the item you want to install.

5. For installation of printer drivers, continue with the following instructions.

For Windows computers, a dialog box appears, offering you the choice of running the program across the Internet or intranet or saving it to disk.

For Mac OS computers, a folder named Printer Drive is downloaded to the desktop in a BinHex-encoded, compressed format. If your Internet browser is equipped with an expander utility, such as StuffIt Expander, the folder will decode and decompress automatically.

6. For Windows computers, browse to the location where you want to save the Prntdrv.exe file and click Save.

For Mac OS computers, if the Printer Driver folder was not automatically decoded and decompressed, start the utility that performs that function.

7. For Windows computers, double-click the Prntdrv.exe file, browse to the location where you want to install the folder, and click Next.

The folder is installed to the location you specified.

8. Install the appropriate printer driver for your operating system.

For instructions on installing the printer driver for	See
Windows 98/Me	“Setting up PostScript or PCL printing with Windows 98/Me” on page 1-1
Windows NT 4.0	“To install the PostScript or PCL printer driver for Windows NT 4.0” on page 1-13
Windows 2000/XP/Server 2003	“To install the PostScript or PCL printer driver for Windows 2000/XP/Server 2003” on page 1-26
Mac OS	“Setting up the Fiery EX2101 as a PostScript printer” on page 2-1

Chapter 4: Troubleshooting

This chapter provides troubleshooting tips.

On Windows computers

Setting up printing on Windows NT 4.0/2000/XP/Server 2003 computers

For information about problems you may encounter using the PostScript Printer Driver for Windows NT 4.0/2000/XP/Server 2003, see the Adobe README file (readme.wri) included in English\Prntdrv\Ps_drvr\Win_NT4x on the User Software CD. For Windows 2000/XP, see your Windows 2000/XP documentation.

Reinstalling the Adobe PostScript Printer Driver on Windows 98/Me

If you are reinstalling the Adobe PostScript Printer Driver, delete any previous versions and related files before installation using the Fiery Printer Delete Utility.

For additional information about problems you may encounter using the Adobe Printer Driver for Windows 98/Me, see the Adobe README file (readme.wri) included in English\Prntdrv\Ps_drvr\Win_9x on the User Software CD.

Problems with the Fiery utilities on Windows computers

If you are experiencing problems with connections for the Fiery utilities, try the following:

1. **Make sure the TCP/IP networking protocol is enabled.**
2. **Make sure the connection is configured correctly for your site.**

To check the current configuration, start a Fiery utility and choose Open from the File menu. Select the Fiery EX2101 and click Modify to see current settings. If the settings are incorrect, change them in this dialog box.

On Mac OS computers

Setting up the Fiery EX2101 in the Mac OS 9 Chooser

If Auto-setup does not work and you are prompted to select the printer description file, select the appropriate Fiery EX2101 file in your hard disk:

SystemFolder:Extensions:Printer Descriptions folder, “Fiery EX2101 PS”.

Installing screen fonts

If you experience problems installing the PostScript screen fonts from the User Software CD to the hard disk: System Folder:Fonts folder, try the following:

1. **Quit all applications and close all windows.**
2. **Create a new folder and name it “Uninstalled Fonts.”**
This folder must be located outside of the System Folder.
3. **Move fonts you are not using from the System Folder:Fonts folder to the Uninstalled Fonts folder.**
4. **Install the fonts from the User Software CD to a folder called CD fonts. Copy the fonts to the System Folder:Fonts folder.**
5. **Create aliases to the System Folder:Fonts folder and the Uninstalled Fonts folder.**
6. **Place both aliases on your desktop.**
7. **When necessary, use the aliases to open both folders and move fonts between them.**

If you have any applications running, you must quit and restart them in order to view and use the newly installed fonts.

Alternatively, you can try combining fonts from multiple suitcases into a single suitcase.

Setting up the Fiery EX2101 in the Mac OS X Print Center

If Auto-setup does not work and you are prompted to select the printer description file, select the appropriate Fiery EX2101 file in your hard disk: System:Library: Printers:PPDs:Contents:Resources:language folder (for example, en.lproj) folder, “Fiery EX2101 PS”.

Installing screen fonts

If you experience problems installing the PostScript screen fonts from the User Software CD to the hard disk: System:Library:Fonts folder, try the following:

1. **Quit all applications and close all windows.**
2. **Create a new folder and name it “Uninstalled Fonts.”**
3. **This folder must be located outside of the System Folder.**
4. **Move fonts you are not using from the hard drive: System: Library: Fonts folder to the Uninstalled Fonts folder.**
5. **Install the fonts from the User Software CD to a folder called CD fonts. Copy the fonts to the hard disk: System:Library:Fonts folder.**
6. **Create aliases to the hard disk: System:Library:Fonts folder and the Uninstalled Fonts folder.**
7. **Place both aliases on your desktop.**
8. **When necessary, use the aliases to open both folders and move fonts between them.**

If you have any applications running, you must quit and restart them in order to view and use the newly installed fonts.

Alternatively, you can try combining fonts from multiple suitcases into a single suitcase.

Index

A

- Adobe Acrobat
 - for DocBuilder Pro 1-43
 - installation 1-43
- Adobe PageMaker for Windows,
see PageMaker for Windows
- Adobe PostScript 3 fonts x
- Adobe PostScript printer driver, *see* PostScript
printer driver
- AppleTalk
 - connecting to Mac OS 9 2-2
 - connecting to Mac OS X 2-5

C

- Chooser
 - selecting the server in Mac OS 9 2-2
 - setting up server in Mac OS 9 4-2
- Command WorkStation ix
 - configuring the connection 1-45
 - installing for Windows 1-42
- Command WorkStation LE ix
 - configuring the connection for
Mac OS X 2-18
 - installing 2-11
- Configuration page 1-10, 1-24, 1-25,
1-39, 1-45
- connecting
 - Windows 2000/XP/Server 2003 with
TCP/IP 1-34
 - Windows NT 4.0 with TCP/IP 1-19
- connection on Windows, configuring 1-45

D

- device name 1-50, 2-14
- DNS name 1-20, 1-45, 2-14
- DocBuilder Pro x
- Domain Name Server, *see* DNS

E

- EPS files xi
- Ethernet 100BaseTX cable x
- Ethernet, SNAP frame type x

F

- Fast Ethernet 100BaseTX cable x
- Fast Ethernet 10BaseT cable x
- Fiery Downloader 1-42
 - EPS files xi
 - installing for Mac OS 2-11
 - installing for Windows 1-42
 - overview xi
 - PDF files xi
- Fiery Printer Delete Utility 1-44
- Fiery Spooler xi
 - configuring the connection on
Mac OS 2-13 to 2-16
 - installing for Mac OS 2-11
 - modifying the configuration
(Mac OS) 2-16
 - overview xi
- Fiery utilities
 - configuring the connection on
Windows 1-45
 - installing for Mac OS 2-11
 - installing for Windows 1-42
 - problems on Windows computers 4-1
- Fiery VDP Resource Manager
 - configuring connection for on
Windows 1-51
 - configuring the connection for on
Mac OS 2-22
 - installing on Mac OS 2-11
- Fiery WebTools
 - Installer xii, xiii, 3-2, 3-3
 - setting up 3-1
 - Status xiii

- WebDownloader xiii
- WebLink xiii
- WebSetup xiii
- WebSpooler xiii
- fonts
 - Adobe PostScript 3 x
 - installer for Mac OS 2-25
 - installing 2-25, 4-2, 4-3
 - Multiple Master x
 - printer fonts 2-25
 - screen fonts 2-25
 - substituting in PDF files x
 - TrueType x
- Fonts folder 4-2, 4-3
- Frame Type option 1-7
- I**
- Installable Options
 - Mac OS 2-4
 - Mac OS X 2-10
 - Windows 2000/XP/Server 2003 1-29
 - Windows 98/Me 1-4
 - Windows NT 4.0 1-16
- installers
 - Mac OS 2-11
 - Windows 1-42
- installing
 - Adobe PostScript printer, Windows 2000/XP/Server 2003 1-26 to 1-31
 - Adobe PostScript printer, Windows 98/Me 1-2
 - Adobe PostScript printer, Windows NT 4.0 1-13 to 1-15
 - Command WorkStation 1-42
 - fonts for Mac OS 2-11
 - Mac OS software 2-11
 - PCL printer driver, Windows 98/Me 1-1
 - PostScript printer driver for Mac OS 9 2-2

- PostScript printer driver for Mac OS X 2-5
- screen and printer fonts 2-25
- software for Mac OS 2-11
- software for Windows 1-42
- installing Adobe Acrobat 1-43
- IP address 1-50
- IPP printing setup
 - on Windows 2000/XP 1-41 to 1-42
 - on Windows 98/Me 1-11 to 1-12
- IPX
 - printing for Windows 2000/XP/Server 2003 1-37 to 1-38
 - printing for Windows NT 4.0 1-21 to 1-23
- IPX/SPX
 - Windows NT 4.0 1-21

- J**
- Java 3-1
- Job Monitor
 - configuring the connection on Windows 1-53

- M**
- Mac OS 9
 - printer setup 2-2
 - setting up server in 4-2
- Mac OS X
 - printer setup 2-4
 - setting up server in 4-3
- Mac OS
 - fonts 2-25
 - Installer WebTool 2-1
 - installing Fiery utilities 2-1, 2-11
 - installing software 2-11
 - troubleshooting 4-2
 - uninstalling software 2-11

N

- NetWare client setup
 - Windows NT 4.0 1-21
- NetWare, network port with
 - Windows 98/Me 1-9

O

- Oemsetup.inf file 1-2, 1-14, 1-27

P

- PageMaker for Windows 1-55
- PCL printer driver
 - Windows 98/Me 1-1
- PDF files x, xi
- PostScript
 - printing with Windows 1-1, 1-13, 1-26
 - screen fonts xi
- PostScript Level 3 x
- PostScript Printer Description file, *see* PPD
- PostScript printer driver
 - installing using WebTools 3-2, 3-3
 - Mac OS 2-2
 - Windows 2000/XP/Server2003 1-26 to 1-31
 - Windows 98/Me 1-2
 - Windows NT 4.0 1-13 to 1-15
- PostScript printing
 - Mac OS 2-1
 - Windows 98/Me 1-1
- PPD
 - copying files for Windows applications 1-55
 - overview xi
 - selecting the PPD in the Chooser 4-2, 4-3
 - Windows 98/Me 1-3
 - Windows 2000/XP 1-28
 - Windows NT 4.0 1-14

Print Center

- selecting the server in Mac OS X 2-5
- setting up server in Mac OS X 4-3

Printer Driver, installable options

- Windows 2000/XP 1-29
- Windows 98/Me 1-4, 1-16

printer drivers

- deleting 1-44

printer drivers, *see* PostScript printer drivers

Printer Info Options

- specifying, from Mac OS X printer driver 2-10

printer setup

- Mac OS 9 2-2
- Mac OS X 2-4

printing

- Windows 2000/XP/Server 2003 1-33
- Windows 98/Me 1-6
- Windows NT 4.0 1-19
- see also* PostScript printing

Prntdrv.exe file 3-3

S

screen fonts 2-25, 4-2, 4-3

server, specifications x

SMB printing setup

- on Windows 2000/XP 1-39 to 1-40
- on Windows NT 4.0 1-24, 1-25
- on Windows 98/Me 1-9

specifications, server x

Spooler, *see* Fiery Spooler**T**

thinnet cable x

troubleshooting

- Mac OS computers 4-2
- Windows computers 4-1

U

- Uninstalled Fonts folder 4-2, 4-3
- uninstalling
 - Mac OS software 2-11
- unshielded twisted pair (UTP) cable x
- User Software CD
 - contents (Mac OS) 2-1
 - contents (Windows) 1-42
 - installing from, for Mac OS 9 2-2
 - troubleshooting fonts 4-2, 4-3

W

- Windows
 - installing Fiery utilities 1-42
 - troubleshooting 4-1
- Windows 2000/XP/Server 2003
 - IPX 1-37 to 1-38
 - PostScript printer driver 1-26 to 1-31
 - printing requirements 1-33
 - setting up PostScript printing 1-26
 - troubleshooting 4-1
- Windows 98/Me
 - PCL printer driver 1-1
 - printing requirements 1-6
 - setting up PostScript printing 1-1
 - SMB printing 1-9
 - troubleshooting 4-1
- Windows NT 4.0
 - IPX 1-23
 - IPX/SPX 1-21
 - PostScript printer driver 1-13 to 1-15
 - printing requirements 1-19
 - setting up PostScript printing 1-13
- WINS Name Server 1-10, 1-25, 1-39