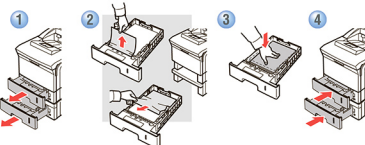
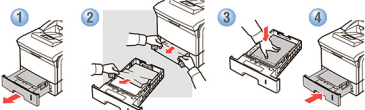
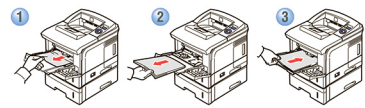


Jams

Jam at Tray 1, 2, 3

- ❗ Застревание бумаги в лотках 1, 2 и 3
- ❗ Бумага застряла в лотках 1, 2 и 3

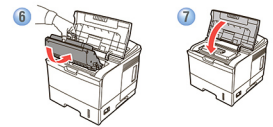
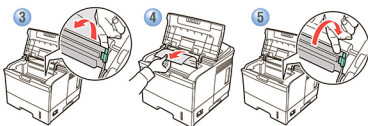
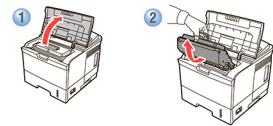


www.xerox.com/support

8V

Jam at Top

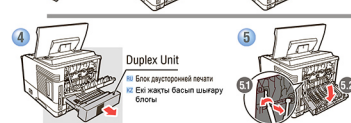
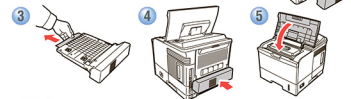
- ❗ Застревание бумаги в верхней лотке
- ❗ Бумага застряла в верхней лотке



8V

Jam at Duplex

- ❗ Застревание бумаги в блоке двусторонней печати
- ❗ Бумага застряла в блоке двусторонней печати

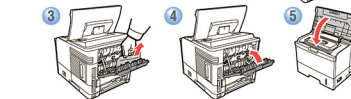


www.xerox.com/support

8V

Jam at Rear

- ❗ Застревание бумаги в задней части принтера
- ❗ Бумага застряла в задней части принтера



XEROX

Phaser® 3600

Laser printer

- English EN
- Русский RU Краткое руководство пользователя
- Қазақ Қысқаша пайдаланушыға арналған қысқаша нұсқа

Quick Use Guide

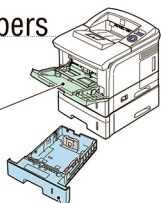


04142340 Rev A
Copyright © 2008 Xerox Corporation. All rights reserved.

www.xerox.com/support

Supported Papers

- Поддерживаемые типы бумаги
- Қағаз түрін өзгерту



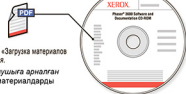
Tray 1 (MPF)	
60 – 176 g/m ² (16 lb. Bond – 65 lb. Cover)	
A4 Letter	8.5 x 14.0 in.
Legal	8.5 x 14.0 in.
Executive	7.25 x 10.5 in.
Statement	5.5 x 8.5 in.
US Folio	8.5 x 13.0 in.
US Postcard	3.5 x 5.5 in.
Index Card	3.0 x 5.0 in.
#10 Commercial 4.1 x 9.5 in.	
Monarch 3.9 x 7.5 in.	
Custom (X) x (Y)	

Tray 2, 3	
60 – 105 g/m ² (16 lb. Bond – 28 lb. Bond)	
A4 Letter	8.5 x 14.0 in.
Legal	8.5 x 14.0 in.
Executive	7.25 x 10.5 in.
US Folio	8.5 x 13.0 in.
Custom (X) x (Y)	
A4	210 x 297 mm
A5	148 x 210 mm
A6	105 x 148 mm
ISO B5	176 x 250 mm
B5 IS	182 x 257 mm
Custom (X) x (Y)	
DL	110 x 220 mm
C5	162 x 229 mm
C6	114 x 162 mm
A4 Letter	8.5 x 11.0 in.
A4	210 x 297 mm



See Loading Print Media in the User Guide.

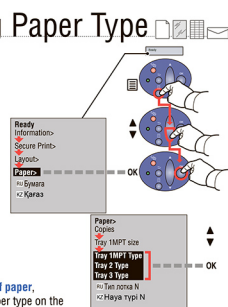
- Дополнительные сведения см. в разделе «Загрузка материалов для печати» в руководстве пользователя.
- Қосымша мәліметтерді «Қағаз түрін өзгерту» бөлімінде табуға болады.



www.xerox.com/support

Changing Paper Type

- Өзгертуге тиіс бумаға
- Қағаздың қолдану түрлері



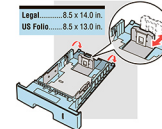
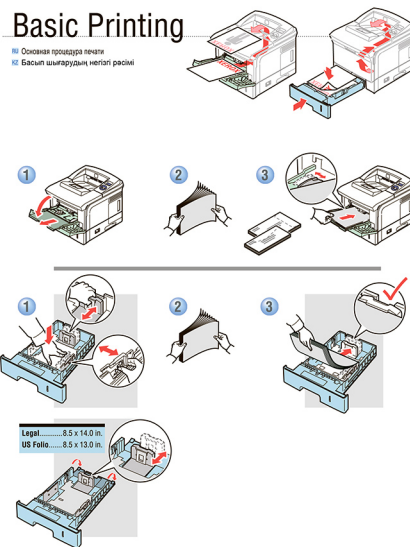
If you change the type of paper, you must specify the paper type on the control panel. Press the menu button, and navigate the menus to choose new settings for the appropriate paper tray.

- При изменении типа бумаги необходимо указать тип бумаги на панели управления. Нажмите кнопку меню и выберите в меню новые параметры для соответствующего лотка.

Қағаз түрін өзгертуге кезде қағаз түрін басқару панелінде көрсету қажет. Меню баттырмасын басып және мәзірде тиісті қағаз үшін жаңа параметрлерді таңдаңыз.

Basic Printing

- Осыған қарағанда негізгі
- Басып шығарудың негізгі рәсімі



www.xerox.com/support

More Information

- Дополнительные сведения
- Қосымша мәліметтер



www.xerox.com/support

- Printer drivers and utilities
- User manuals and instructions
- Online Support Assistant
- Safety Information (in User Guide)

- Драйверлері және құралдарының бағдарламалары
- Пайдаланушыға арналған нұсқаулар және нұсқаулар
- Интернеттегі қолдау орталығы
- Безопасность (в руководстве пользователя)

www.xerox.com/office/businessresourcecenter

www.xerox.com/environment_europe

www.xerox.com/msds

www.xerox.com/msds

www.xerox.com/msds

www.xerox.com/msds

www.xerox.com/msds

www.xerox.com/msds

www.xerox.com/msds

www.xerox.com/msds

www.xerox.com/msds

www.xerox.com/msds

www.xerox.com/msds

www.xerox.com/msds

www.xerox.com/msds

www.xerox.com/msds

www.xerox.com/msds

www.xerox.com/msds

www.xerox.com/msds

www.xerox.com/msds

www.xerox.com/msds

www.xerox.com/msds

www.xerox.com/msds

www.xerox.com/msds

www.xerox.com/msds

www.xerox.com/msds

www.xerox.com/msds

www.xerox.com/msds

www.xerox.com/msds

www.xerox.com/msds

www.xerox.com/msds

www.xerox.com/msds

www.xerox.com/msds

www.xerox.com/msds

www.xerox.com/msds

www.xerox.com/msds

www.xerox.com/msds

www.xerox.com/msds

www.xerox.com/msds