

XEROX

**4213
Laser
Printer**

***Menu Tree
Quick
Reference
Card***

Beta Version

Xerox Corporation
701 South Aviation Boulevard, ESL-305
El Segundo, California 90245

Xerox® and 4213 are trademarks of Xerox Corporation
Printed in U.S.A. 720P87090 (12/91)

This Menu Tree shows the factory default order. Once user defaults are chosen, the order of the submenu items will change.

Note: The user can enter and change menu items only when the 4213 laser printer is offline.

Legend:

A Menu/[Up Arrow] key

B Test/[Down Arrow] key

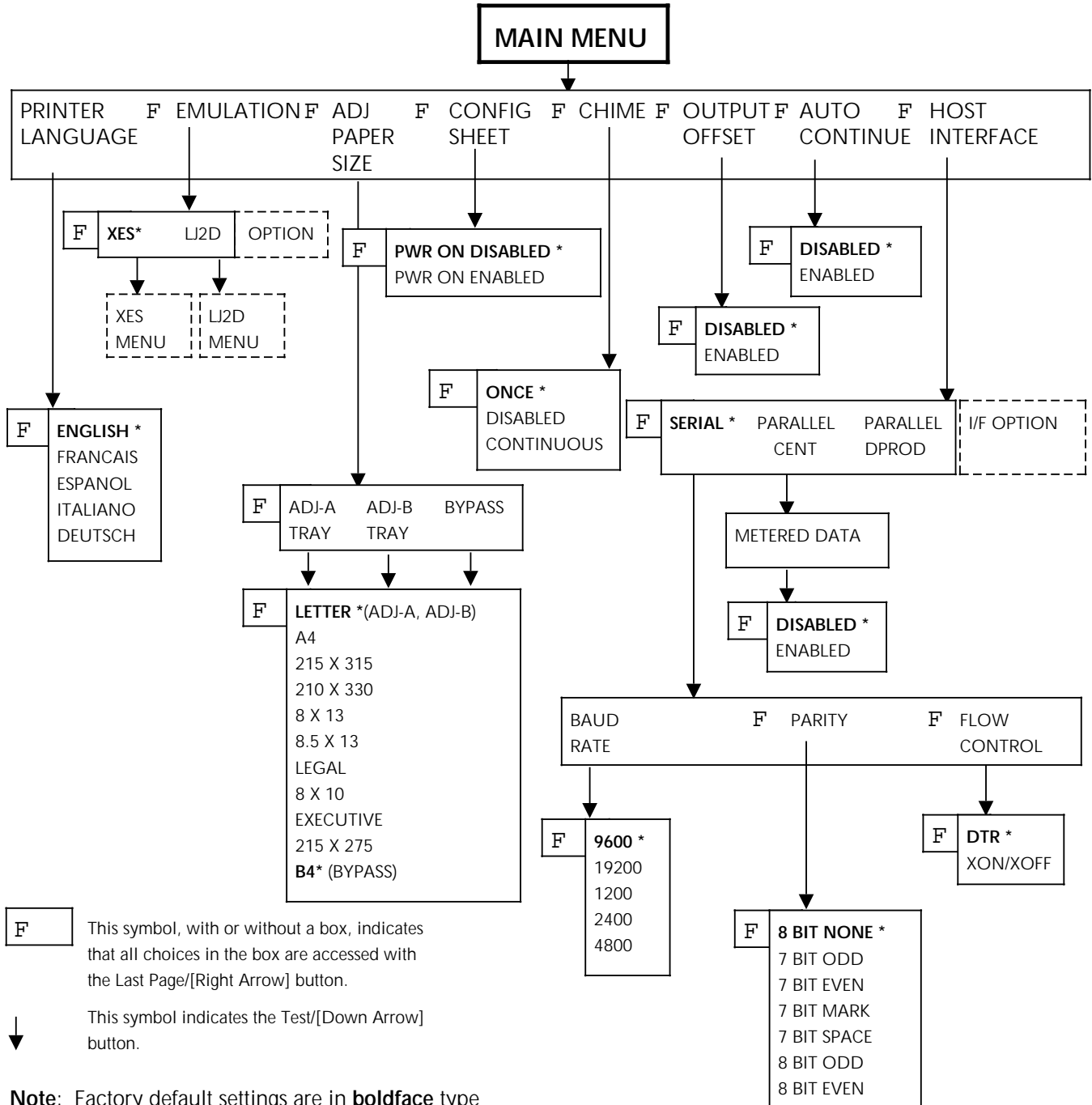
or
↓
▼

C This symbol, boxed or unboxed,
or represents the Last Page/[Right Arrow]
F key

This card is designed to provide a quick reference for the order of menu tree items. For more detailed information on changing and saving default items, please refer to chapter 3, "Using the 4213 menus," in the *Xerox 4213 Laser Printer User Guide* (720P86020).

Main menu map

- A When the printer is offline, pressing the Menu/[Up Arrow] button displays the 4213 Main Menu. The Main Menu is made up of top level menu headings and up to three of the lower and associated level menu headings and options.

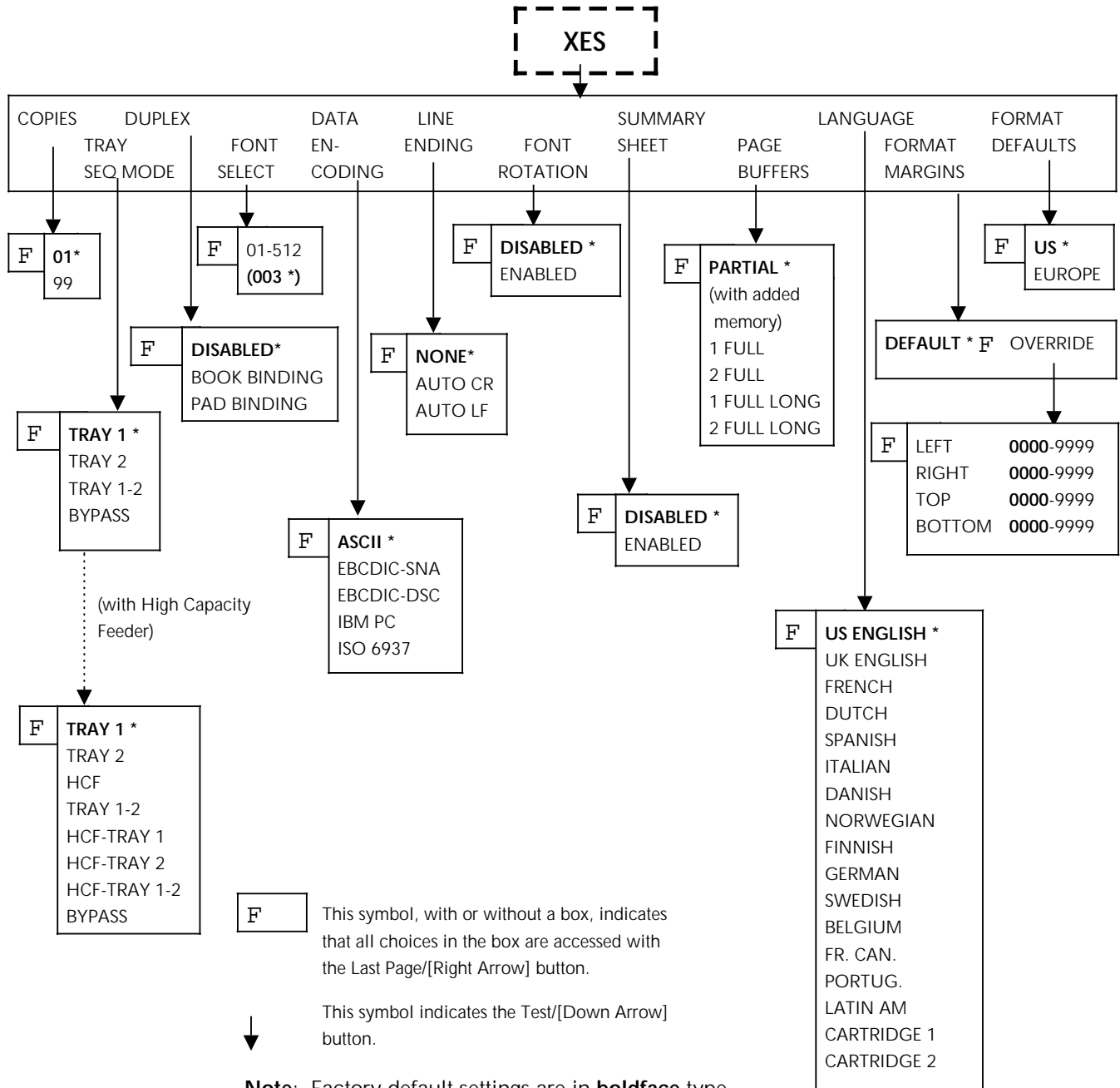


Note: Factory default settings are in **boldface** type and asterisked. Under the Adjustable Paper Size menu item, letter is the factory default for trays ADJ-A and ADJ-B. B4 is only available in the Bypass tray and is the factory default setting for this tray.

The XES submenu map

C B This XES sub-menu is accessed from the Main Menu. Press the Last Page/[Right Arrow] button to scroll to XES emulation menu. Press the Test/[Down Arrow] button at the EMULATION heading to display this sub-menu. The XES sub-menu is made up of top level menu headings and up to two of the associated lower level menu headings and options.

To access top level XES menu headings (COPIES through FORMAT DEFAULTS), press the Last Page/[Right Arrow] button.



The LJ2D submenu map

B C This LJ2D sub-menu is accessed from the Main Menu. Press the Test/[Down Arrow] button at the EMULATION heading. Press the Last Page/[Right Arrow] button to move you to LJ2D emulation or until this sub-menu is displayed. The LJ2D sub-menu is made up of top level menu headings and up to three associated but lower level menu headings and options. Refer to "Control panel buttons" section in this chapter to help you move through the different menu levels

