



QUICK GUIDE

for Windows Vista

CONTENTS

Chapter 1: SYSTEM REQUIREMENTS	1
Chapter 2: INSTALLING PRINTER SOFTWARE IN WINDOWS	2
Installing Software for Local Printing	2
Installing Software for Network Printing	5
Chapter 3: SCANNING USING THE WIA DRIVER	8

See the User Guide for detailed information and instructions not covered in this guide.

[Click here to access the User Guide.](#)

1 System Requirements

Before you begin, ensure that your system meets the following requirements:

Windows

Item	Vista Home Basic	Vista Home Premium/ Business/Ultimate
CPU	1 GHz 32-bit (x86) or 64-bit (x64) processor	1 GHz 32-bit (x86) or 64-bit (x64) processor
Memory	512 MB of system memory	1 GB of system memory
Hard Disk	20 GB hard drive with at least 15 GB of available space	40 GB hard drive with at least 15 GB of available space
Graphics Card	Support for DirectX 9 graphics and 32 MB of graphics memory	Support for DirectX 9 graphics with: WDDM Driver 128 MB of graphics memory (minimum) Pixel Shader 2.0 in hardware 32 bits per pixel
Optical Disk Drive	DVD-ROM drive	DVD-ROM drive
Others	Audio Output	Audio Output
	Internet access (fees may apply)	Internet access (fees may apply)

NOTE: For Windows Vista, users who have an administrator right can install the software.

- XEROX® and Phaser® are trademarks of Xerox Corporation in the United States and/or other countries.
- Adobe Reader®, Acrobat®, and PostScript® are trademarks of Adobe Systems Incorporated in the United States and/or other countries.
- Microsoft®, Vista™, Windows® are trademarks of Microsoft Corporation in the United States and/or other countries.

2 Installing Printer Software in Windows

Installing Printer Software

You can install the printer software for local printing or network printing. To install the printer software on the computer, perform the appropriate installation procedure depending on the printer in use.


A printer driver is software that lets your computer communicate with your printer. The procedure to install drivers may differ depending on the operating system you are using.

All applications should be closed on your PC before beginning installation.

Installing Software for Local Printing

A local printer is a printer directly attached to your computer using the printer cable supplied with your printer, such as a USB or parallel cable. If your printer is attached to a network, skip this step and go to "Installing Software for Network Printing" on page 5.

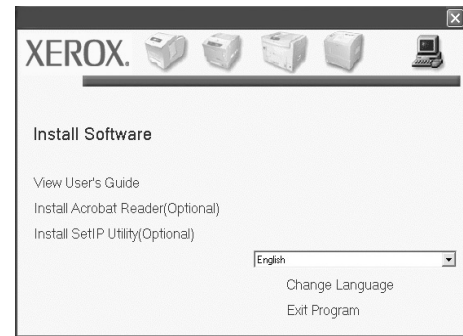
You can install the printer software using the typical or custom Method.

NOTE: If the "New Hardware Wizard" window appears during the installation procedure, click  in the upper right corner of the box to close the window, or click **Cancel**.

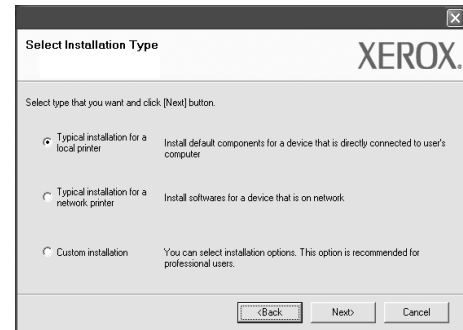
Typical Installation

This is recommended for most users. All components necessary for printer operations will be installed.

- 1 Make sure that the printer is connected to your computer and powered on.
- 2 Insert the supplied CD-ROM into your CD-ROM drive. The CD-ROM should automatically run, and an installation window appears.
If you use Windows Vista, click **Start** → **All programs** → **Accessories** → **Run**, and type **X:\Setup.exe**.
If the **AutoPlay** window appears in Windows Vista, click **Run Setup.exe** in **Install or run program** field, and click **Continue** in the **User Account Control** window.

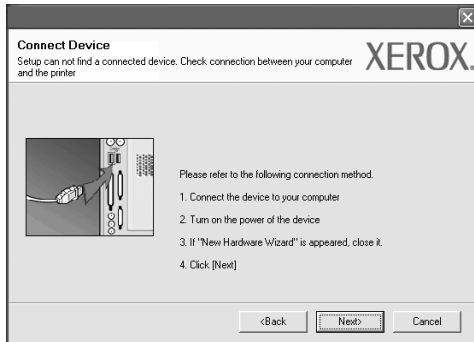


- 3 Click **Next**.
 - If necessary, select a language from the drop-down list.
- 4 Select **Typical installation for a local printer**. Click **Next**.



NOTE: If your product does not have the network feature "Typical installation for a local printer" will not appear on the screen.

NOTE: If your printer is not already connected to the computer, the following window will appear.



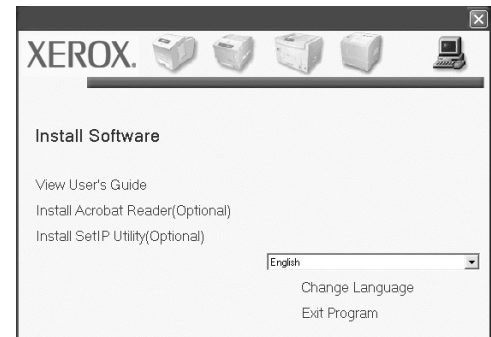
- After connecting the printer, click **Next**.
- If you don't want to connect the printer at this time, click **Next**, and **No** on the following screen. Then the installation will start and a test page will not be printed at the end of the installation.
- **The installation window that appears in this User Guide may differ depending on the printer and interface in use.**

- 5 After the installation is finished, a window asking you to print a test page appears. If you choose to print a test page, select the check box and click **Next**. Otherwise, just click **Next** and skip to step 7.
- 6 If the test page prints out correctly, click **Yes**. If not, click **No** to reprint it.
- 7 To register yourself as a user of Xerox Printers in order to receive information from Xerox, select the check box and click **Finish**. You are now sent to the Xerox web site. Otherwise, just click **Finish**.

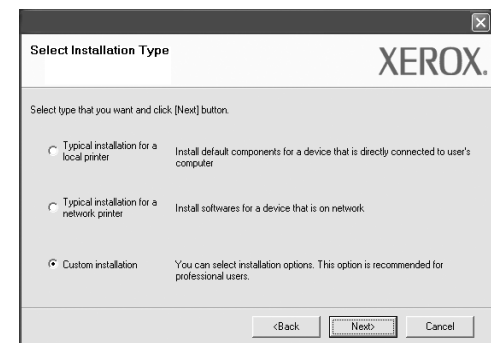
Custom Installation

You can choose individual components to install.

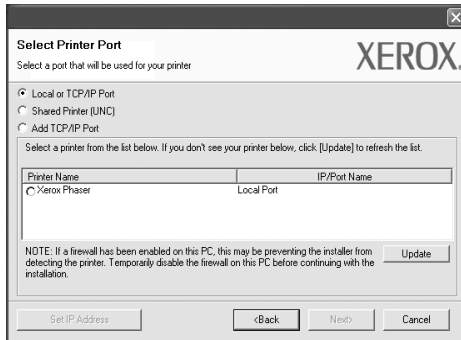
- 1 Make sure that the printer is connected to your computer and powered on.
- 2 Insert the supplied CD-ROM into your CD-ROM drive. The CD-ROM should automatically run, and an installation window appears. If you use Windows Vista, click **Start** → **All programs** → **Accessories** → **Run**, and type **X:\Setup.exe**. If the **AutoPlay** window appears in Windows Vista, click **Run Setup.exe** in **Install or run program** field, and click **Continue** in the **User Account Control** window.



- 3 Click **Next**.
 - If necessary, select a language from the drop-down list.
 - **View User Guide:** Allows you to view the User Guide. If your computer doesn't have Adobe Reader, click on this option and it will automatically install Adobe Reader for you.
- 4 Select **Custom installation**. Click **Next**.

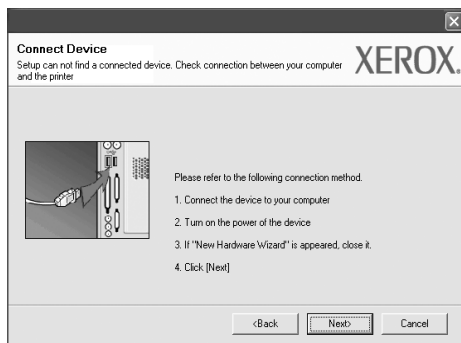


- 5 The list of printers available on the local appears. Select the printer you want to install from the list, and then click **Next**.



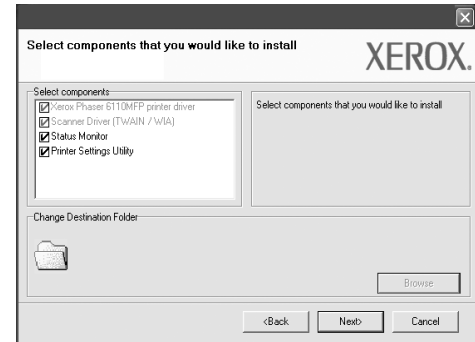
- 6 Select your printer and click **Next**.

NOTE: If your printer is not already connected to the computer, the following window will appear.



- After connecting the printer, click **Next**.
- If you don't want to connect the printer at this time, click **Next**, and **No** on the following screen. Then the installation will start and a test page will not be printed at the end of the installation.
- **The installation window that appears in this User Guide may differ depending on the printer and interface in use.**

- 7 Select the components to install and click **Next**.



NOTE: You can change the desired installation folder by clicking [**Browse**].

- 8 After the installation is finished, a window asking you to print a test page appears. If you choose to print a test page, select the check box and click **Next**. Otherwise, just click **Next** and skip to step 10.
- 9 If the test page prints out correctly, click **Yes**. If not, click **No** to reprint it.
- 10 Click **Finish**.

Installing Software for Network Printing

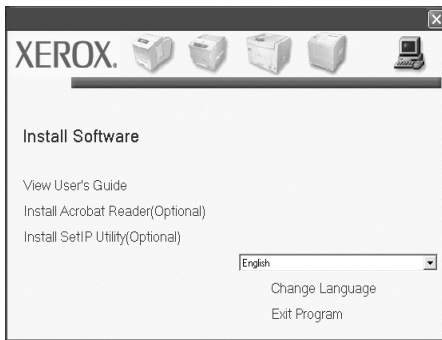
When you connect your printer to a network, you must first configure the TCP/IP settings for the printer. After you have assigned and verified the TCP/IP settings, you are ready to install the software on each computer on the network.

You can install the printer software using the typical or custom method.

Typical Installation

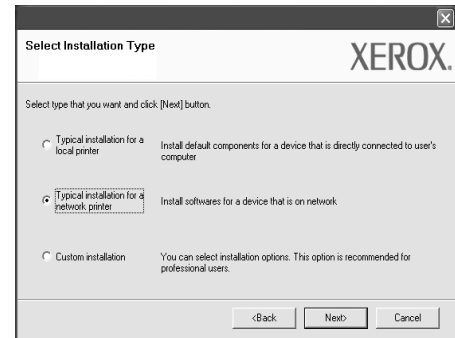
This is recommended for most users. All components necessary for printer operations will be installed.

- 1 Make sure that the printer is connected to your network and powered on. For details about connecting to the network, see the supplied printer's User Guide.
- 2 Insert the supplied CD-ROM into your CD-ROM drive. The CD-ROM should automatically run, and an installation window appears. If you use Windows Vista, click **Start** → **All programs** → **Accessories** → **Run**, and type **X:\Setup.exe**. If the **AutoPlay** window appears in Windows Vista, click **Run Setup.exe** in **Install or run program** field, and click **Continue** in the **User Account Control** window.

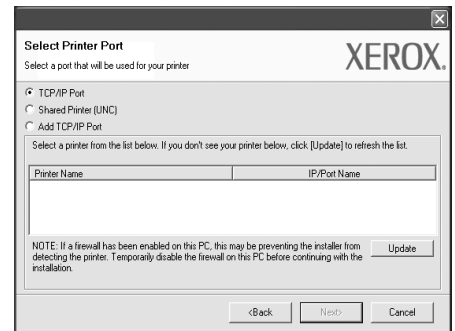


- 3 Click **Next**.
 - If necessary, select a language from the drop-down list.
 - **View User Guide:** Allows you to view the User Guide. If your computer doesn't have Adobe Reader, click on this option and it will automatically install Adobe Reader for you.

- 4 Select **Typical installation for a network printer**. Click **Next**.



- 5 The list of printers available on the network appears. Select the printer you want to install from the list, and then click **Next**.



- If you do not see your printer on the list, click **Update** to refresh the list, or select **Add TCP/IP Port** to add your printer to the network. To add the printer to the network, enter the port name and the IP address for the printer.

To verify your printer's IP address or the MAC address, print a Configuration page.

NOTE: If you cannot find your machine on the network, please turn off the firewall and click **Update**.

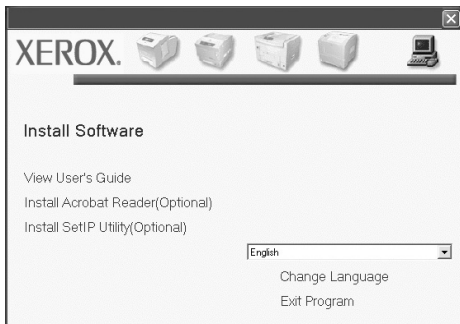
- 6 After the installation is finished, a window appears asking you to print a test page. If you so desire, select the corresponding check box and click **Finish**.

Otherwise, just click **Finish**.

Custom Installation

You can choose individual components to install and set a specific IP address.

- 1 Make sure that the printer is connected to your network and powered on. For details about connecting to the network, see the supplied printer's User Guide.
- 2 Insert the supplied CD-ROM into your CD-ROM drive. The CD-ROM should automatically run, and an installation window appears. If you use Windows Vista, click **Start** → **All programs** → **Accessories** → **Run**, and type **X:\Setup.exe**. If the **AutoPlay** window appears in Windows Vista, click **Run Setup.exe** in **Install or run program** field, and click **Continue** in the **User Account Control** window.



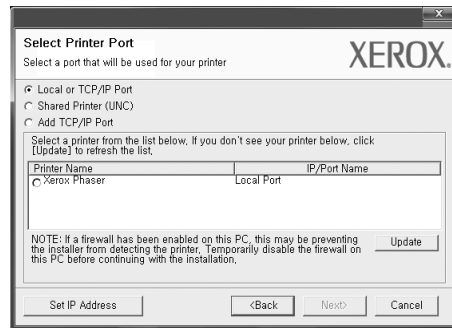
- 3 Click **Next**.

- If necessary, select a language from the drop-down list.
- **View User Guide:** Allows you to view the User Guide. If your computer doesn't have Adobe Reader, click on this option and it will automatically install Adobe Reader for you.

- 4 Select **Custom installation**. Click **Next**.



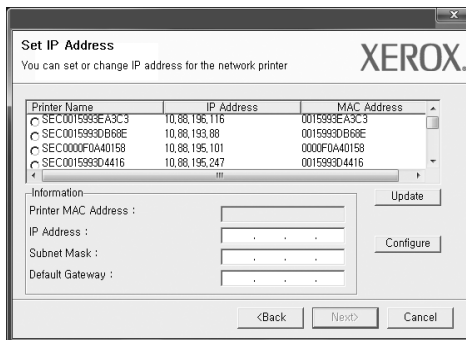
- 5 The list of printers available on the network appears. Select the printer you want to install from the list, and then click **Next**.



- If you do not see your printer on the list, click **Update** to refresh the list, or select **Add TCP/IP Port** to add your printer to the network. To add the printer to the network, enter the port name and the IP address for the printer.

To verify your printer's IP address or the MAC address, print a Network Configuration page.

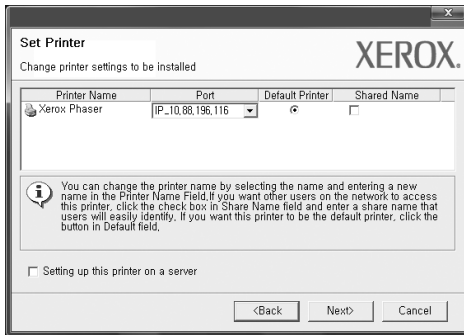
NOTE: If you cannot find your machine on the network, please turn off the firewall and click **Update**.



TIP: To set a specific IP address on a specific network printer, click the **Set IP Address** button. The Set IP Address window appears. Do as follows:

- a. Select a printer to set with a specific IP address from the list.
- b. Configure an IP address, subnet mask, and gateway for the printer manually and click **Configure** to set the specific IP address for the network printer.
- c. Click **Next**.

- 6 Select the components to install. After selecting the components, the following window appears. You can also change the printer name, set the printer to share on the network, set the printer as the default printer, and change the port name of each printer. Click **Next**.



To install this software on a server, select the **Setting up this printer on a server** checkbox.

- 7 After the installation is finished, a window appears asking you to print a test page. If you so desire, select the corresponding check box and click **Finish**. Otherwise, just click **Finish**.

3 Scanning Using the WIA Driver

Your machine also supports the Windows Image Acquisition (WIA) driver for scanning images. WIA is one of the standard components provided by Microsoft® Windows® Vista and works with digital cameras and scanners. Unlike the TWAIN driver, the WIA driver allows you to scan and easily manipulate images without using additional software.

Your device may not have this feature.

NOTE: The WIA driver works on Windows Vista with a USB port.

- 1 Load the document(s) face up into the DADF (or ADF).
OR
Place a single document face down on the scanner glass and close the scanner lid.
- 2 Click **Start** -> **Control Panel** -> **Hardware and Sound** -> **Scanners and Cameras**.
- 3 Click on **Scan a document or picture**. Then **Windows Fax and Scan** application is opened automatically.

NOTE: To view scanners, user can click on **View scanners and cameras**.

- 4 Click **New Scan**, and the scan driver is opened.
- 5 Choose your scanning preferences, and click **Preview** to see how your preferences affect the picture.
- 6 Click **Scan**.

NOTE: If you want to cancel the scan job, press the **Cancel** button on the Scanner and Camera Wizard.
