



Xerox Phaser 6200 Maintenance Firmware Release

Installation Instructions

October 3, 2002

In May 2002, the Xerox Office Printing Business introduced the award-winning Phaser 6200 Color Laser Printer. Combining high performance, superior print quality, and unprecedented ease-of-use, the Phaser 6200 printer offers the best value available for letter-sized color laser printers.

In keeping with Xerox' total commitment to quality, Xerox is pleased to offer Phaser 6200 customers this maintenance release of printing software. This new software improves printer usability and reliability by addressing problems that were discovered after the initial introduction of the product. Xerox is confident that this software will further improve your printing experience.

This document describes the steps necessary to upgrade a Phaser 6200 printer from the original firmware release to the new version using the flash update program file.

Printers manufactured after October 2002 were shipped with the new firmware pre-installed, and do not require this maintenance release.

The maintenance release software is available to download at no charge from the Internet at:

http://officeprinting.opbu.xerox.com/cgi-bin/formeng.pl?form=6200printer_firmwareupdate

A two CD-ROM set containing the new printer driver and utilities and the printer firmware flash update PostScript file may be ordered by calling 1-800-835-6100.

See the "Technical Change Notes for the Xerox Phaser 6200 Maintenance Firmware Release" document that is included in the maintenance release package for a detailed list of changes from the original printer firmware to the new version.

Xerox Phaser 6200 Color Laser Printer
Maintenance Firmware Release Installation Instructions

I. Checking the Version of Firmware Installed in a Phaser 6200 Printer

Check the version presently installed in your printer before performing the printer firmware update. The printer displays the firmware version presently installed on the configuration page. A configuration page is printed from the printer's front panel controls.

To print the configuration pages and check the firmware version presently installed:

1. Use the arrow keys on the printer's front panel to select the "Printable Pages" item, and press "Enter".
2. Press the down arrow key to scroll to the "Configuration Pages" key, and press "Enter".
3. The printer prints two pages of configuration information. The firmware version presently installed is displayed on the seventh line of the left column on the first page. Check the firmware version presently installed against the table below to determine if you need to update your printer:

Release Date	Notes	Version Numbers
May, 2002	Original Release - Install upgrade.	OS 4.26 / PS 2.12 / Net 14.66.02.22.2002
October, 2002	Maintenance Release - No need to install upgrade.	OS 4.32 / PS 2.16 / Net 15.50.08.27.2002

Note: *The print engine firmware revision number is not affected by this firmware update package. The print engine firmware revision number is shown after the identifier "Eng" in the printer firmware version line, between the "PS" and "Net" items.*



**Xerox Phaser 6200 Color Laser Printer
Maintenance Firmware Release Installation Instructions**

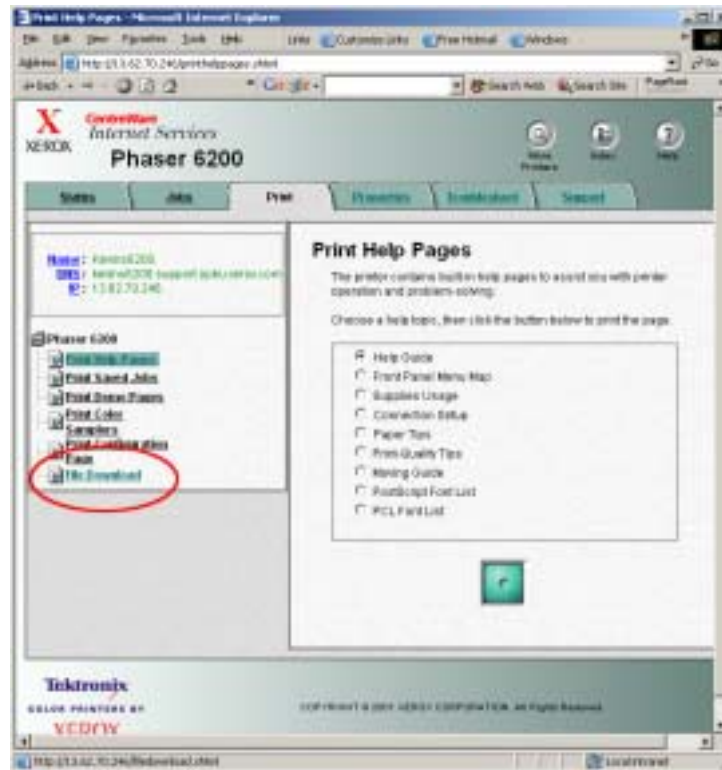
**II. Updating a Phaser 6200N, Phaser 6200DP, or
Phaser 6200DX Configuration Using a TCP/IP
Network Connection (*Preferred Method*)**

1. Launch your preferred web browser on your computer. Microsoft Internet Explorer™, Netscape Navigator™, or most other popular web-browsers should work.
2. Enter the TCP/IP address of the printer or its DNS network name in the web browser's address bar, and open the page. The address bar is typically at the top of a browser window. *Shown in the top-left red oval.*
3. Click on the “Print” button in the list of functions on the right side of the page. *Shown in the bottom-right red oval.*



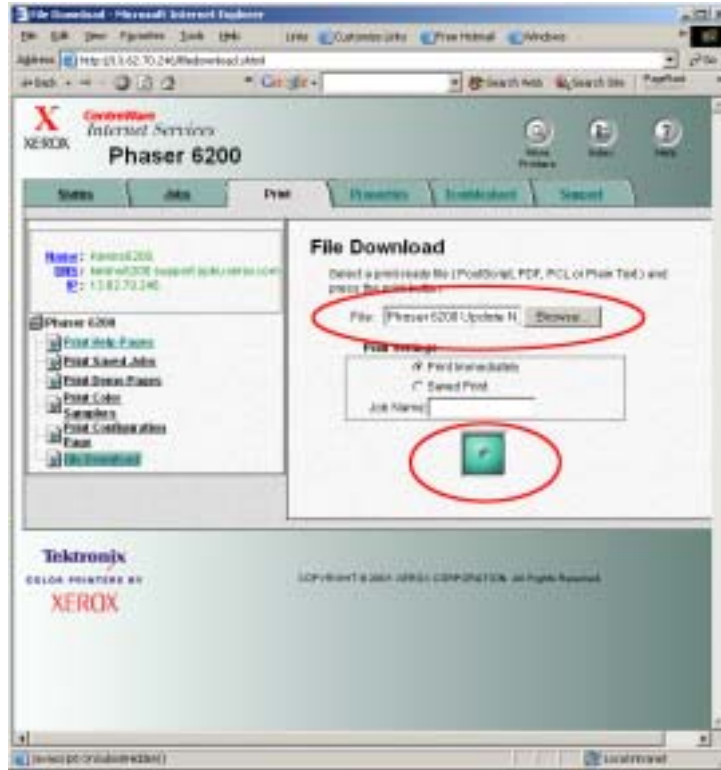
Xerox Phaser 6200 Color Laser Printer Maintenance Firmware Release Installation Instructions

4. Click on the “File Download” link in the list of options on the left side of the page. *Shown in the red oval on the left side of the page.*



Xerox Phaser 6200 Color Laser Printer Maintenance Firmware Release Installation Instructions

- Click the “Browse” button. In the resulting file open window, select the firmware update file named “P6200N_DP_DX_Update.ps” that is provided as part of this update package. *Shown in the upper red oval.*



- Click the green button to transmit the firmware update to the printer.
- No further user action is required to complete the firmware update process.

Caution: Do not attempt to cancel the firmware update process or turn off the printer power during the update. The printer might be left in an inoperable state that requires service.

Notes: The printer prints a warning page the printer should not be interrupted during the firmware update process. The front panel LCD displays the progress of the firmware update. The printer automatically restarts after the firmware update process is complete. The printer's configuration and settings are not altered by this firmware update.

Xerox Phaser 6200 Color Laser Printer
Maintenance Firmware Release Installation Instructions

III. Updating Any Phaser 6200 Configuration from a Computer with a Microsoft Windows Operating System Using a USB, Parallel, or Novell Connection

1. Launch the “OPB File Downloader.exe” application located in the “Phaser 6200 Update” directory.
2. Select the Phaser 6200 printer in the pull-down list of installed printers.
3. Determine the configuration of Phaser 6200 printer you have. The configuration name is displayed in the top line of printer’s LCD display on the front panel of the printer. The configuration names are Phaser 6200B, Phaser 6200N, Phaser 6200DP, and Phaser 6200DX.

For the Phaser 6200B configuration, use the file “P6200B_Update.ps” to update the printer in the steps below. For the Phaser 6200N, Phaser 6200DP, and Phaser 6200DX configurations, use the file “P6200N_DP_DX_Update.ps” to update the printer in the steps below. If you do not have the correct version of the printer firmware update file for your printer, download the correct file from the Xerox OPB web site at:

http://officeprinting.opbu.xerox.com/cgi-bin/formeng.pl?form=6200printer_firmwareupdate

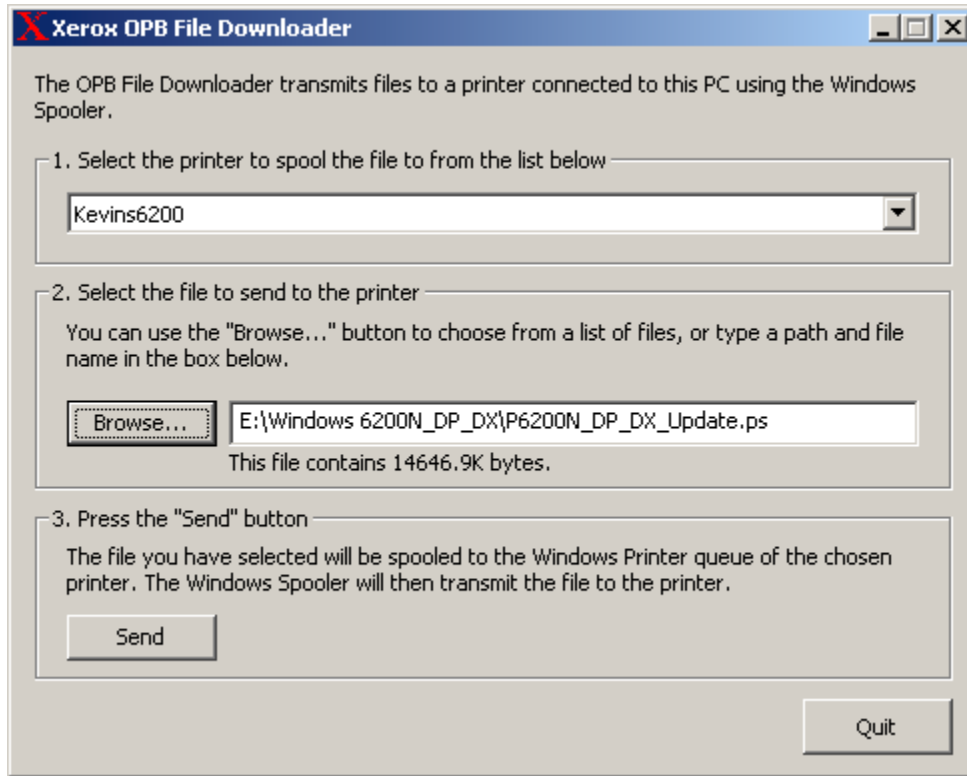
Notes: *The printer firmware image installed by the “P6200B_Update.ps” and “P6200N_DP_DX_Update.ps” files is identical; only the firmware update programs that write the flash ROM memory are different. Two different firmware update files are required because of the different memory requirements for the two configurations.*

Using the incorrect firmware update file cannot change the printer configuration.



Xerox Phaser 6200 Color Laser Printer Maintenance Firmware Release Installation Instructions

- Use the “Browse...” button to select the appropriate firmware update file, then press the “Send” button. The firmware update is sent to the printer using the Windows print spooler.



- No further user action is required to complete the firmware update process. The printer restarts automatically when the update process is complete, and the printer is then ready for use.

Caution: Do not attempt to cancel the firmware update process once it has started, or turn off the printer power during the update. The printer might be left in an inoperable state that requires service.

Notes: *The printer prints a warning page the printer should not be interrupted during the firmware update process. The front panel LCD displays the progress of the firmware update. The printer automatically restarts after the firmware update process is complete.*

The printer's configuration and settings are not altered by this firmware update.

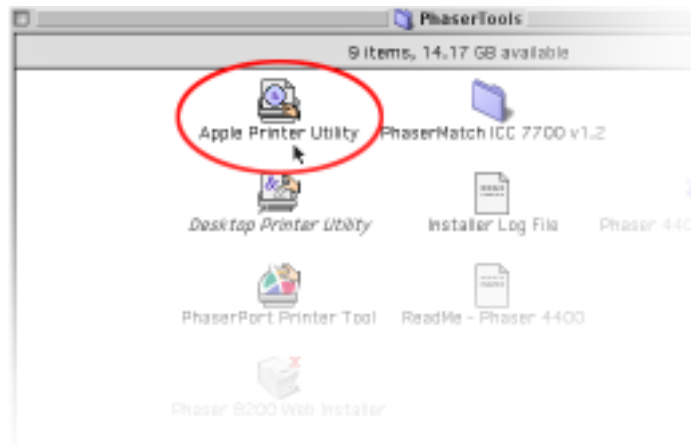


**Xerox Phaser 6200 Color Laser Printer
Maintenance Firmware Release Installation Instructions**

**IV. Updating a Phaser 6200N, Phaser 6200DP, or
Phaser 6200DX Configuration with a Macintosh
Computer Using an AppleTalk Network Connection**

Note: *When using Macintosh OS X, the update procedure runs from within the “Classic” environment.*

1. Launch the Apple Printer Utility. The Phaser 6200 Driver Installation CD installs this program in the “PhaserTools” folder at the top-level of the computer’s startup disk. *Indicated by the red oval below.*



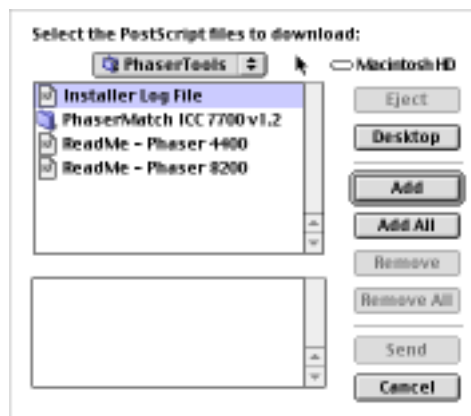
Note: *The Apple Printer Utility is a classic Macintosh application that runs in either Mac OS 9 as a native program or Mac OS X within the Classic environment.*

Xerox Phaser 6200 Color Laser Printer Maintenance Firmware Release Installation Instructions

2. Select the Phaser 6200 printer in Printer Selector window of the Apple Printer Utility, and press the “Open Printer” button. If the Phaser 6200 printer does not appear in the list of printers, ensure the AppleTalk zone containing the Phaser 6200 printer is selected.



- Note:** *If the Printer Selector window does not appear, open it using the “Printer Selector” item in the “Windows” menu of the Apple Printer Utility.*
3. Select the “Send PostScript File...” item in the “File” menu of the Apple Printer Utility.



4. Select the firmware update file named “P6200N_DP_DX_Update.ps” in the open file dialog that appears, and press the “Open” button. This file is provided as part of this update package in the folder “Phaser 6200 Update”.



Xerox Phaser 6200 Color Laser Printer
Maintenance Firmware Release Installation Instructions

5. No further user action is required to complete the firmware update process.

Caution: Do not attempt to cancel the firmware update process once it has started or turn off the printer power during the update. The printer might be left in an inoperable state requiring Xerox service to repair.

Notes: *The printer prints a warning page the printer should not be interrupted during the firmware update process. The front panel LCD displays the progress of the firmware update. The printer automatically restarts after the firmware update process is complete.*

The printer's configuration and settings are not altered by this firmware update.



Xerox Phaser 6200 Color Laser Printer
Maintenance Firmware Release Installation Instructions

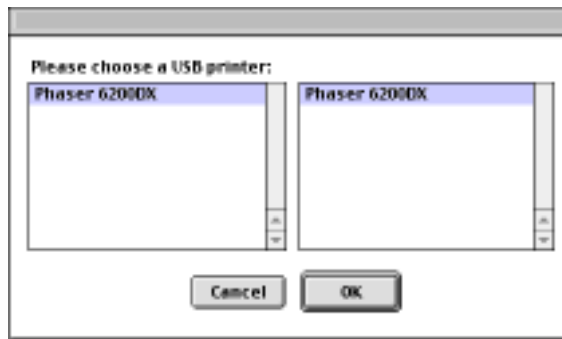
V. Updating Any Phaser 6200 Configuration from a Macintosh Computer Using a USB connection

Note: *When using Macintosh OS X, the update procedure runs from within the “Classic” environment.*

1. Launch the “USB Updater” application located in the “Phaser 6200 Update” folder.

Note: *The Apple Printer Utility is a classic Macintosh application that runs in either Mac OS 9 as a native program or Mac OS X within the Classic environment.*

2. Select the Phaser 6200 printer from the list of USB-connected printers that appears.



3. From with the “File...” menu, choose the “Select File...” menu command.
4. Determine the configuration of Phaser 6200 printer you have. The configuration name is displayed in the top line of printer’s LCD display on the front panel of the printer. The configuration names are Phaser 6200B, Phaser 6200N, Phaser 6200DP, and Phaser 6200DX.

For the Phaser 6200B configuration, use the file “P6200B_Update.ps” to update the printer in the steps below. For the Phaser 6200N, Phaser 6200DP, and Phaser 6200DX model printers, use the file “P6200N_DP_DX_Update.ps” to update the printer in the steps below. If you do not have the correct version of the printer firmware update file for your printer, download the correct file from the Xerox OPB web site at:

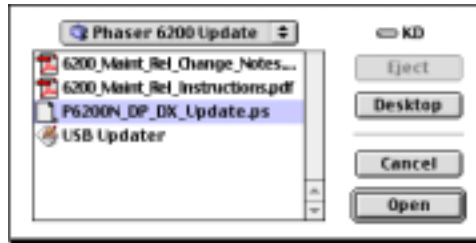
http://officeprinting.opbu.xerox.com/cgi-bin/formeng.pl?form=6200printer_firmwareupdate

Xerox Phaser 6200 Color Laser Printer Maintenance Firmware Release Installation Instructions

Notes: *The printer firmware image installed by the “P6200B_Update.ps” and “P6200N_DP_DX_Update.ps” files is identical; only the firmware update programs that write the flash ROM memory are different. Two different firmware update files are required because of the different memory requirements for the two models.*

Using the incorrect firmware update file cannot change the printer configuration.

5. Select the appropriate firmware update in the open file dialog that appears, and press the “Open” button. The firmware update is sent to the printer.



6. No further user action is required to complete the firmware update process. The printer will restart automatically when the update process is complete, and the printer will be ready for use.

Warning: Do not attempt to cancel the firmware update process once it has started, or turn off the printer power during the update. The printer might be left in an inoperable state that requires service.

Notes: *The printer prints a warning page the printer should not be interrupted during the firmware update process. The front panel LCD displays the progress of the firmware update. The printer automatically restarts after the firmware update process is complete. The printer’s configuration and settings are not altered by this firmware update.*