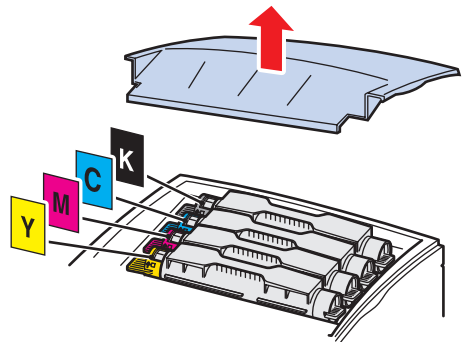
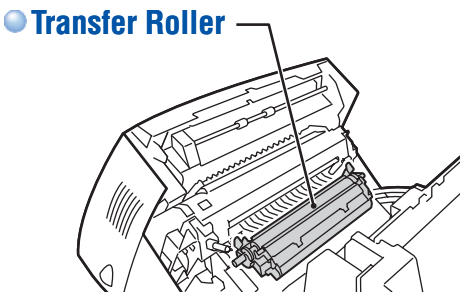
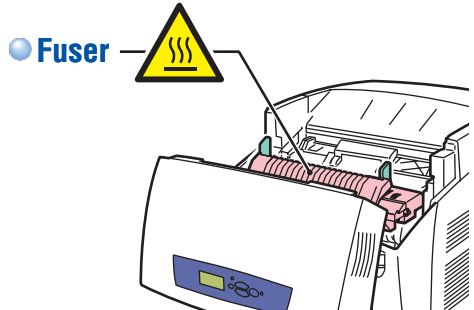
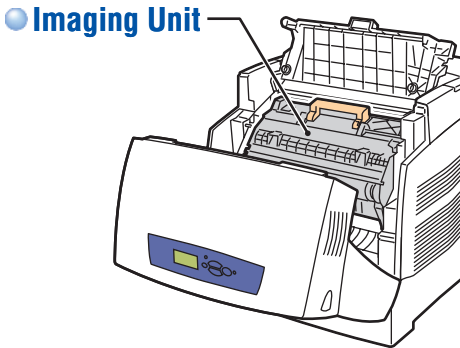
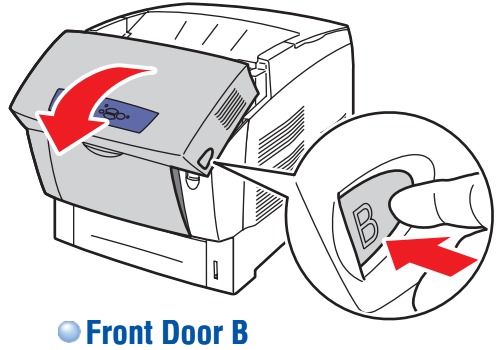
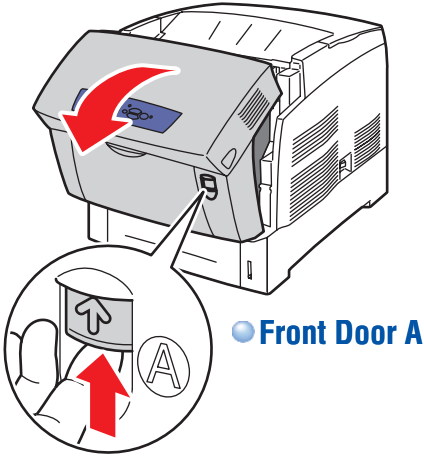


Quick Reference Guide



Printer Tour

Front Doors A and B access different parts of the printer.



Supported Papers

Tray:	1 (MPT)	2-4
Statement 5.5 x 8.5 in.	●	
Executive 7.25 x 10.5 in.	●	●
A/Letter 8.5 x 11.0 in.	●	●
US Folio 8.5 x 13.0 in.	●	●
Legal 8.5 x 14.0 in.	●	●
A6 105 x 148 mm	●	
A5 148 x 210 mm	●	
A4 210 x 297 mm	●	●
B5 JIS 182 x 257 mm	●	●
ISO B5 176 x 250 mm	●	
Custom (H) x (W)	●	

Tray 1 (MPT)
Tray 2-4

64-90 g/m ² (17-24 lb. Bond)	85-130 g/m ² (22-32 lb. Bond)	
● Plain Paper	● Heavy Plain Paper	Letterhead

Tray 1 (MPT)
Tray 2

● Labels

Tray 1 (MPT)
Tray 2

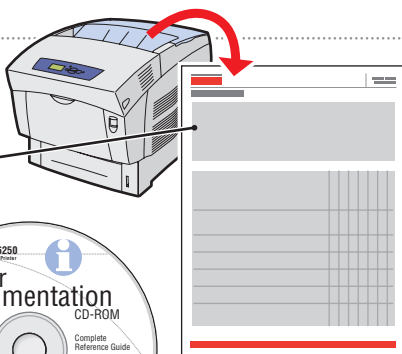
● Phaser 25-Series Transparency

Tray 1 (MPT)

100-163 g/m ² (36-60 lb. Cover)	160-216 g/m ² (59-80 lb. Cover)
● Thin Card Stock	● Thick Card Stock

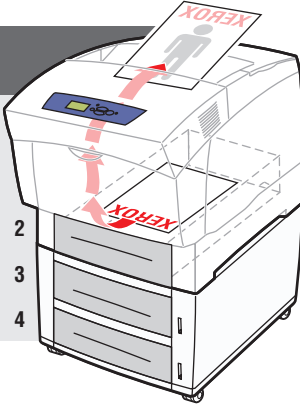


- Print the "Paper Tips Page" for a complete listing.
- Go to [Reference/Printing/Supported Papers](#).

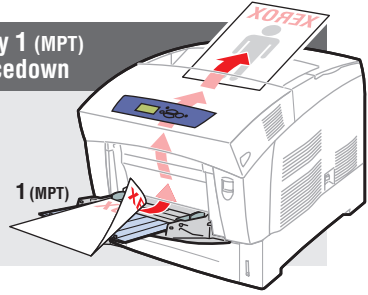


Basic Printing

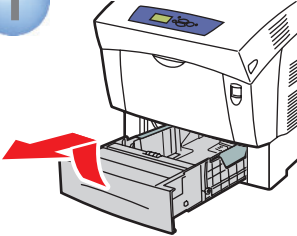
Tray 2-4
Faceup



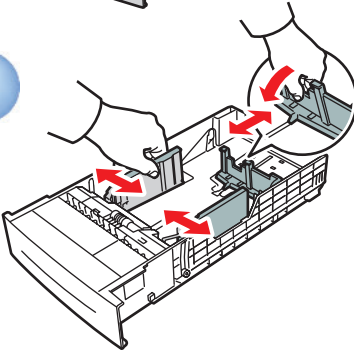
Tray 1 (MPT)
Facedown



1



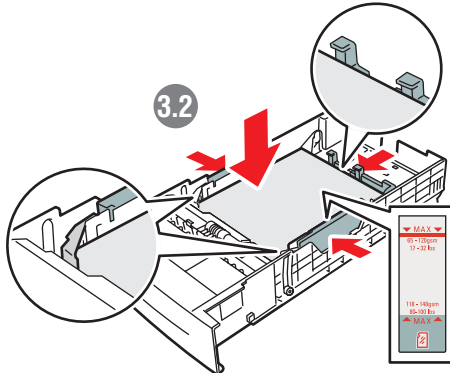
2



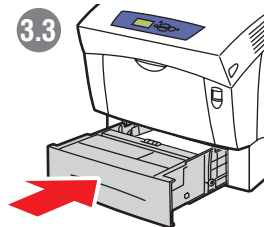
3



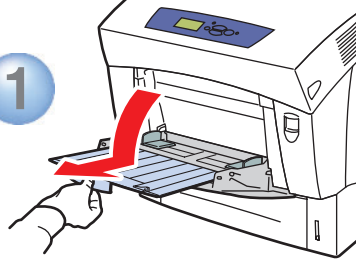
3.2



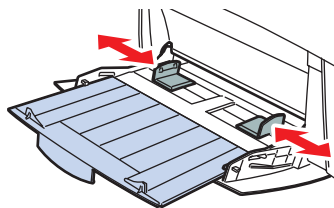
3.3



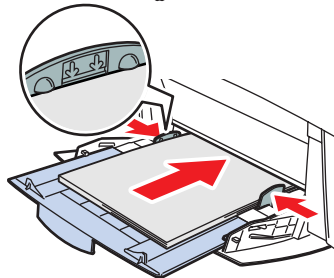
1

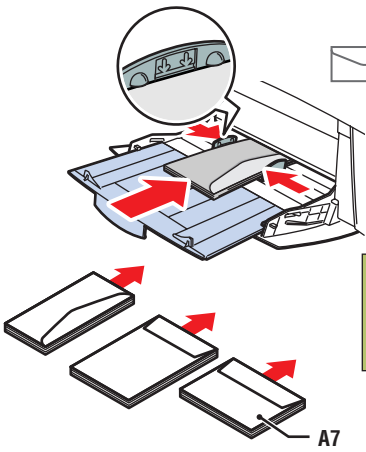


2



3



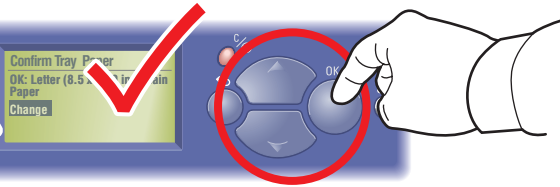


Tray: 1 (MPT)

#10 Comm..... 4.12 x 9.5 in.	DL..... 110 x 220 mm
Monarch..... 3.87 x 7.5 in.	C5..... 162 x 229 mm
A7..... 5.25 x 7.25 in.	C6..... 114 x 162 mm
Custom..... (H) x (W)	B5..... 176 x 250 mm

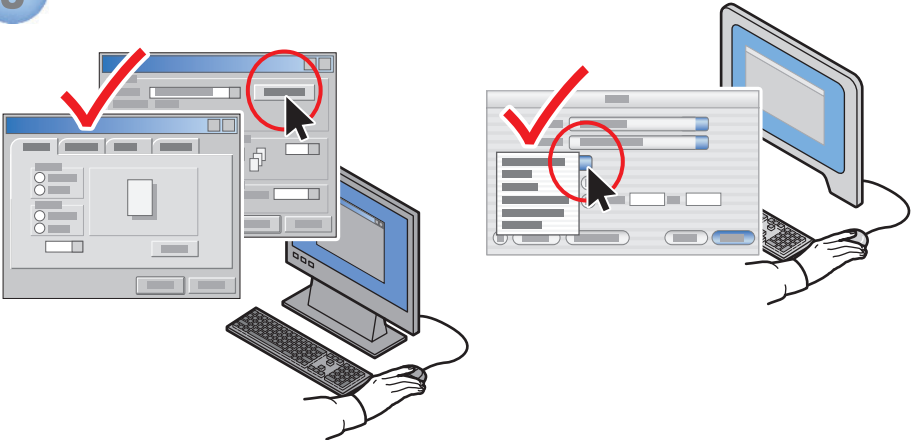


4



- **Select settings to avoid fuser damage.**
Use Phaser® media for best results.

5

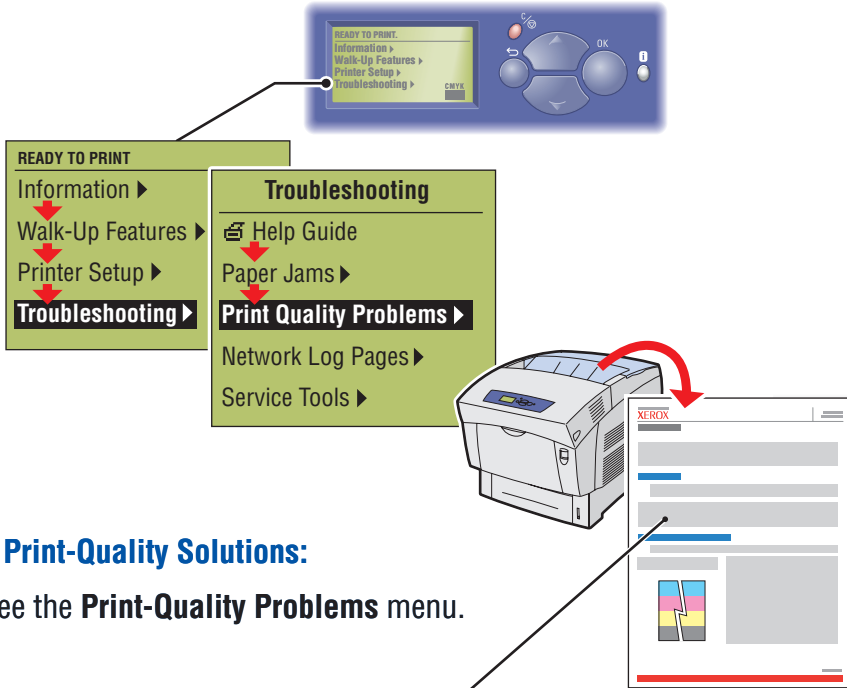


- **Use the Xerox printer driver for complete printing control.**

PC: Click the **Properties** button.

Mac: Use the pull-down menu.

Print Quality



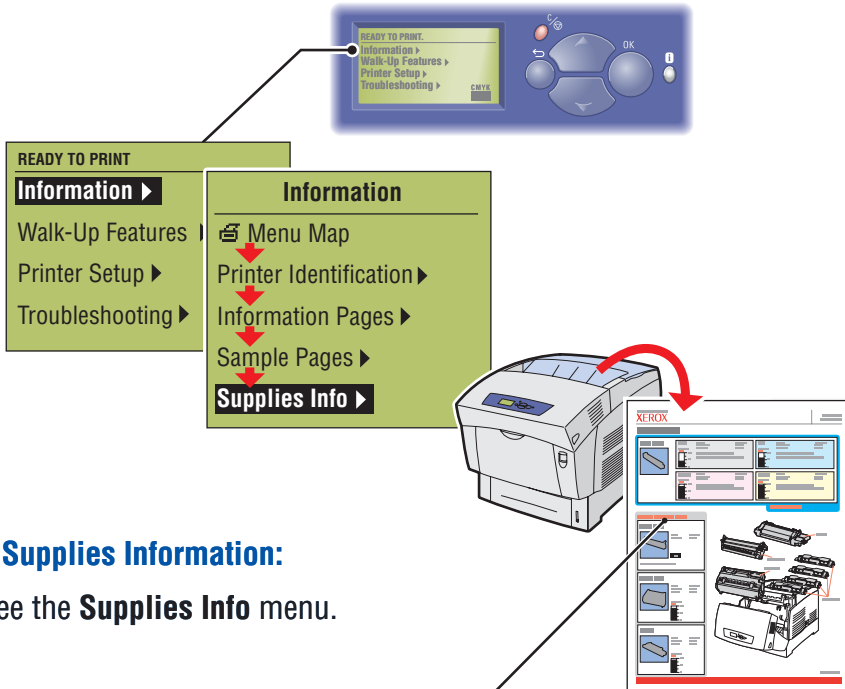
For Print-Quality Solutions:

- See the **Print-Quality Problems** menu.
- Print the "Troubleshooting Print-Quality Page".
- Go to **Reference/Troubleshooting/Print-Quality Problems**.
- Visit the Support web site.



www.xerox.com/office/6250support

Supplies Info



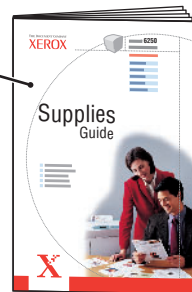
For Supplies Information:

- See the **Supplies Info** menu.
- Print the "Supplies Usage Page".

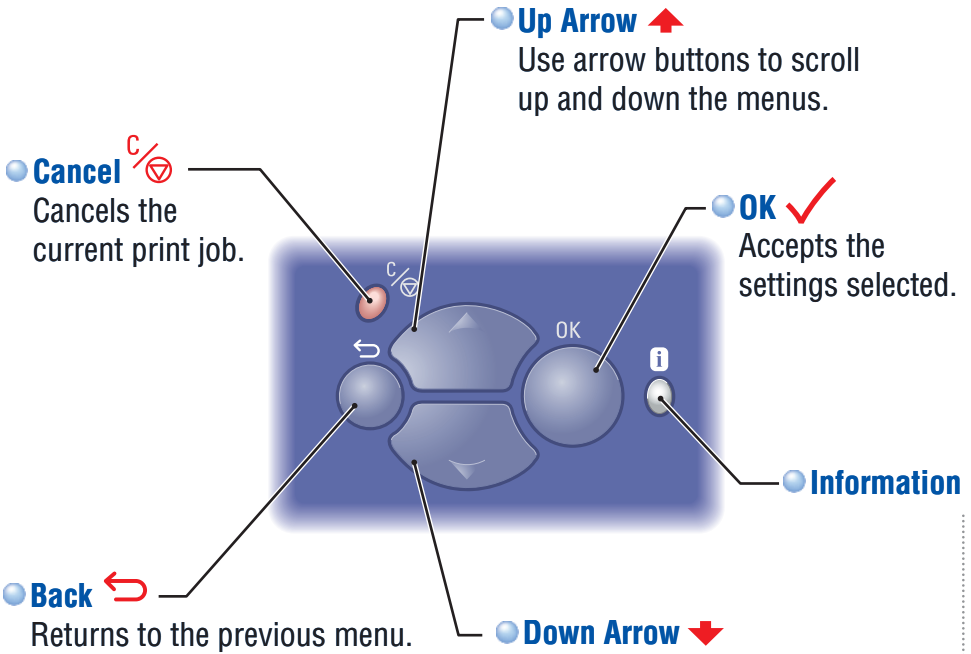
- See the *Supplies Guide* and contact your local reseller.

- Visit the Xerox Phaser Supplies web site.

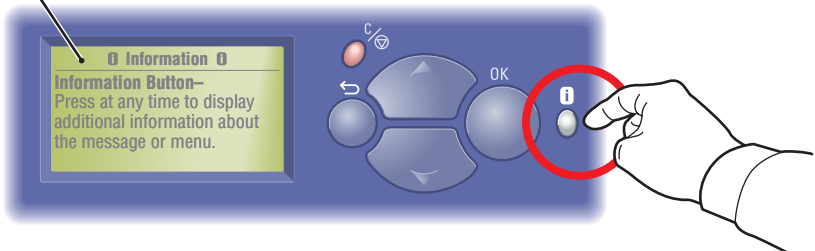
www.xerox.com/office/6250supplies



Front Panel Buttons



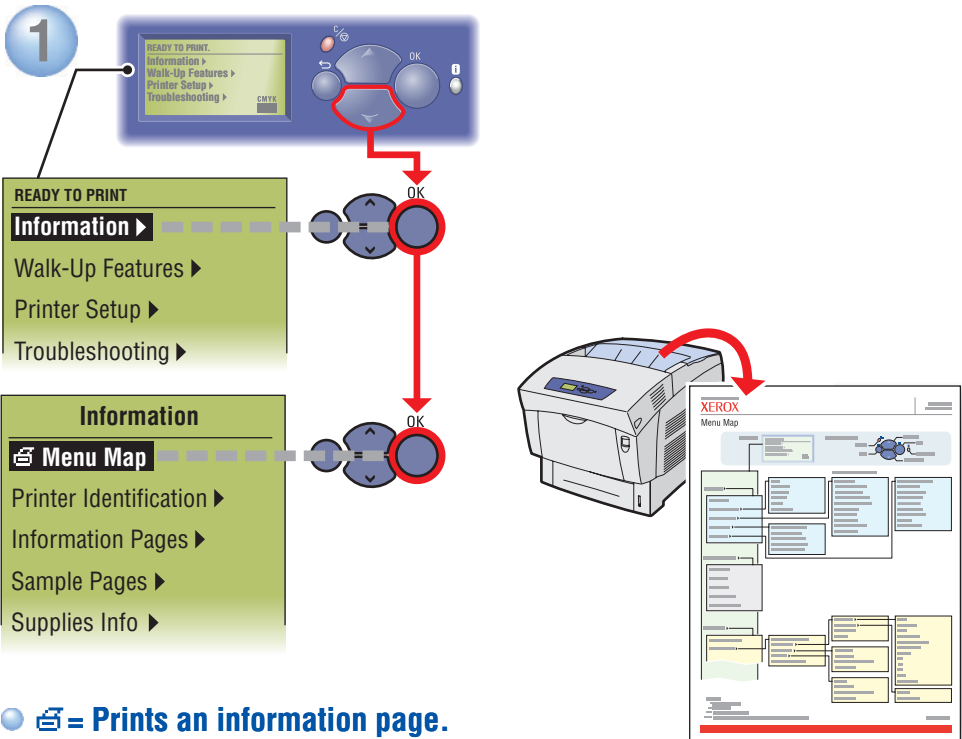
Information Button



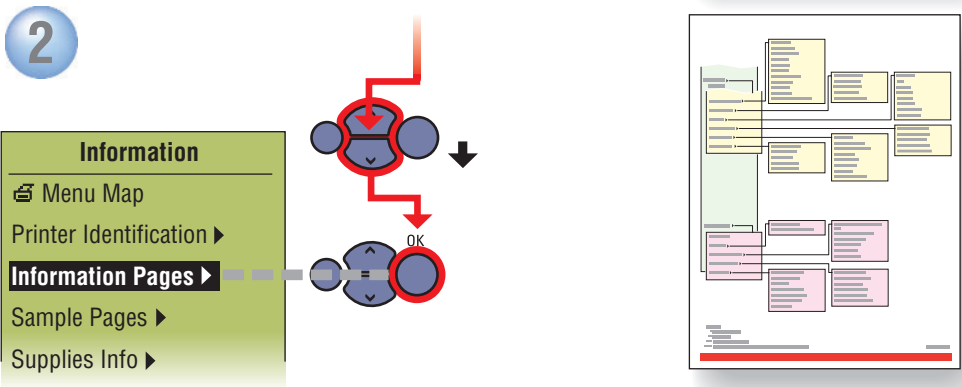
- **Press at any time to display additional information about the message or menu.**

Information Pages

Use the front panel to print information pages on a variety of subjects.



= Prints an information page.



More Information



www.xerox.com/office/6250support

Visit the Support web site for:

- Printer drivers
- Printer management software
- Troubleshooting help
- User manuals
- Instructional videos

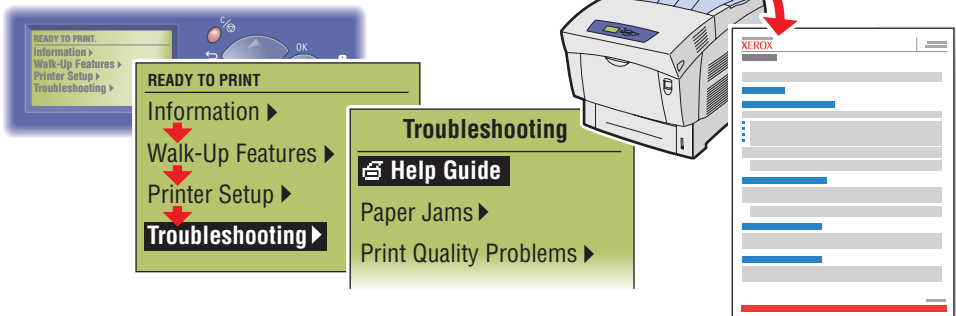


See the *User Documentation CD-ROM* for:

- User manuals
- Instructional videos
- Networking information



Print the **"Help Guide"** for a complete list of information resources.



www.colorconnection.xerox.com

Visit the **Color Connection web site** for templates, tips, and tutorials designed especially for Xerox printers.