

XEROX.

Phaser® 6360



color laser printer

# Quick Use Guide

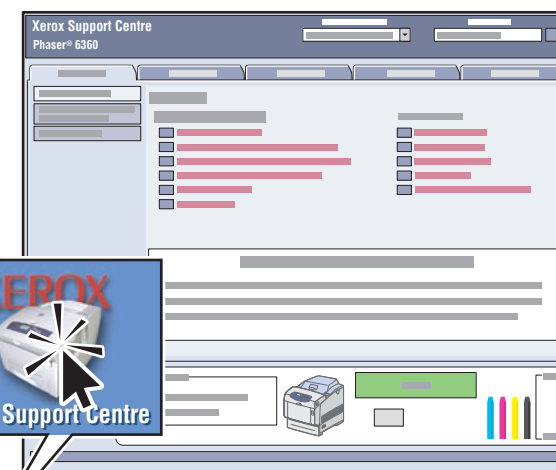


Printer Tour  
Supported Papers  
Print Quality  
Basic Printing  
Information Pages  
Supplies Info



More information

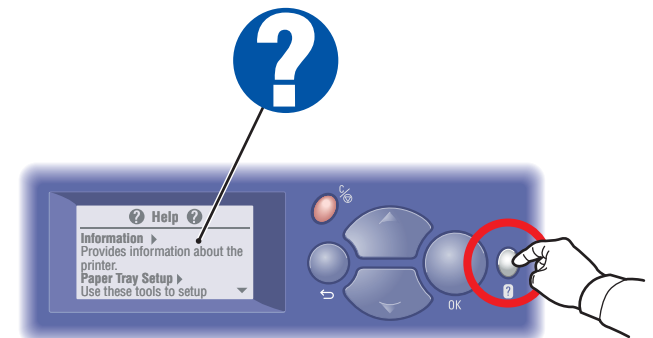
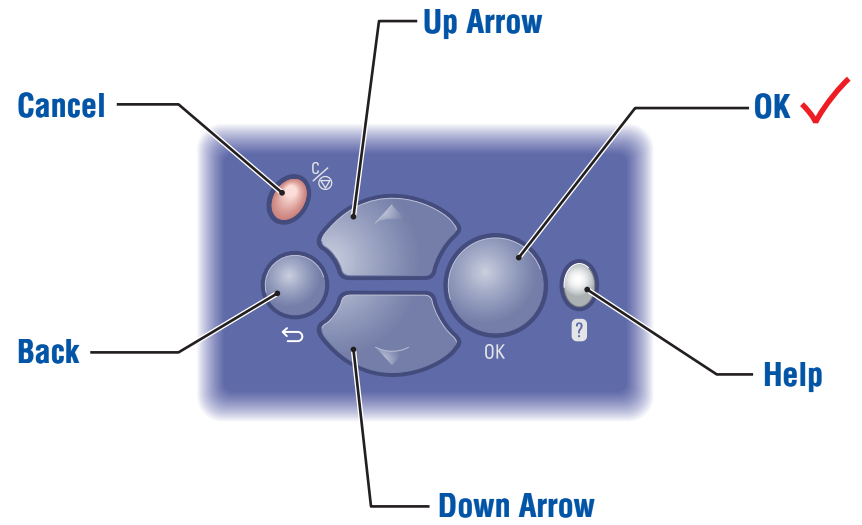
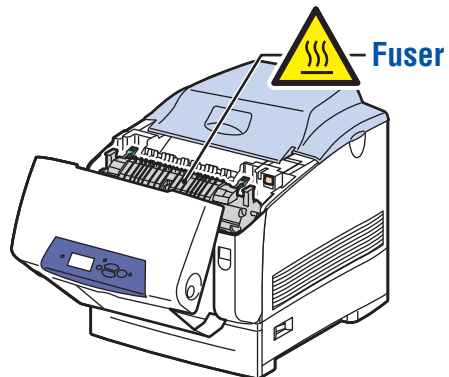
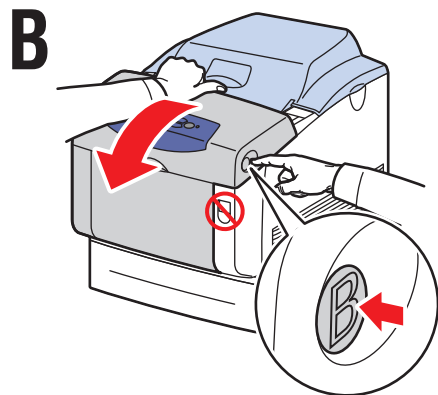
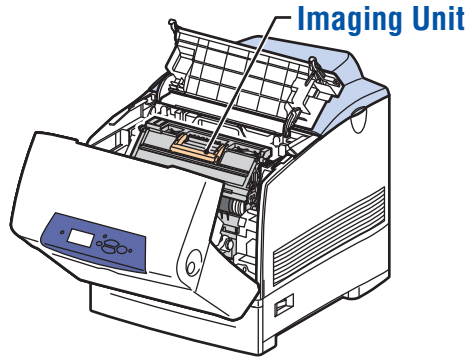
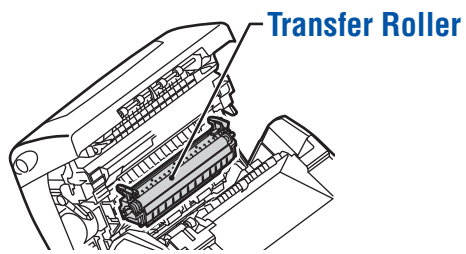
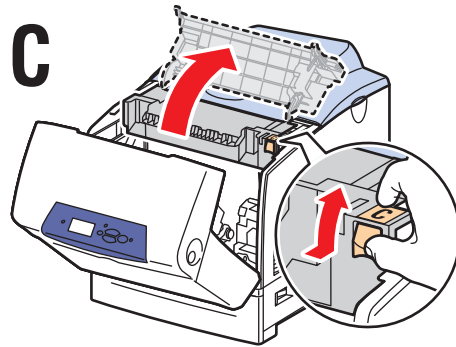
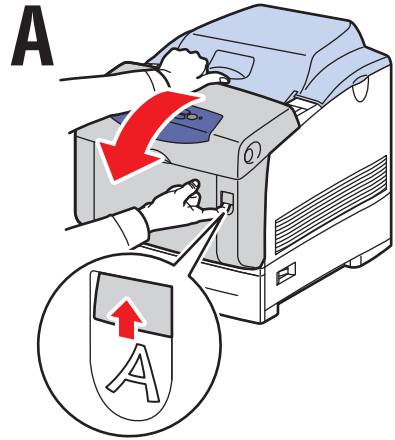
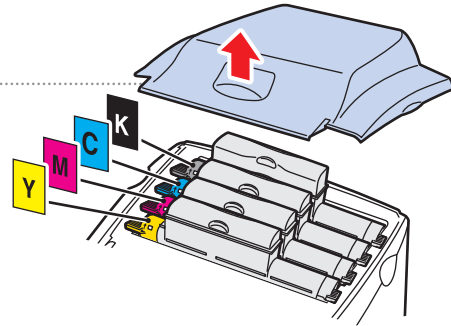
Xerox Support Centre



**Utility** installs with the printer driver, or go to [www.xerox.com/office/6360support](http://www.xerox.com/office/6360support). Double-click the icon on the Windows desktop or Mac OS X dock.

- **User manuals and video tutorials**
- **Troubleshooting**
- **Printer and supplies status**
- **User safety**
- **Material Safety Data Sheets**

# Printer Tour



**Help Button:** Press at any time to display additional information about the message or menu.

# Supported Papers

**Tray 1 (MPT), 2 – 5**

65 – 163 g/m<sup>2</sup>  
(17 – 40 lb. Bond/  
50 – 60 lb. Cover)

Executive..... 7.25 x 10.5 in.  
A/Letter..... 8.5 x 11.0 in.  
US Folio..... 8.5 x 13.0 in.  
Legal..... 8.5 x 14.0 in.  
B5 JIS..... 182 x 257 mm  
A5..... 148 x 210 mm  
A4..... 210 x 297 mm

**Tray 1 (MPT)**

65 – 216 g/m<sup>2</sup>  
(17 – 40 lb. Bond/  
50 – 80 lb. Cover)

Statement..... 5.5 x 8.5 in.  
A6..... 105 x 148 mm  
ISO B5..... 176 x 250 mm

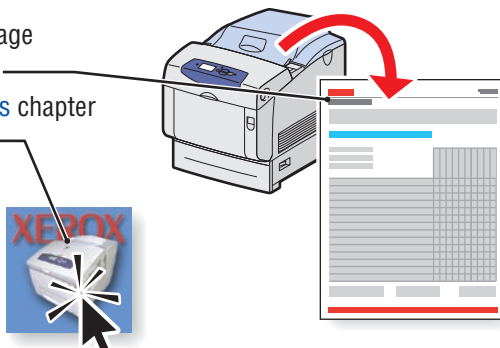
Custom..... (SE) x (LE)

SE: 89 – 216 mm (3.5 – 8.5 in.)  
LE: 140 – 914 mm (5.5 – 36.0 in.)

✗✗

- ✗ Monarch..... 3.87 x 7.5 in.
- ✗ #10 Commercial..... 4.12 x 9.5 in.
- ✗ A7..... 5.25 x 7.25 in.
- ✗ DL..... 110 x 220 mm
- ✗ C6..... 114 x 162 mm
- ✗ C5..... 162 x 229 mm
- ✗ B5..... 176 x 250 mm

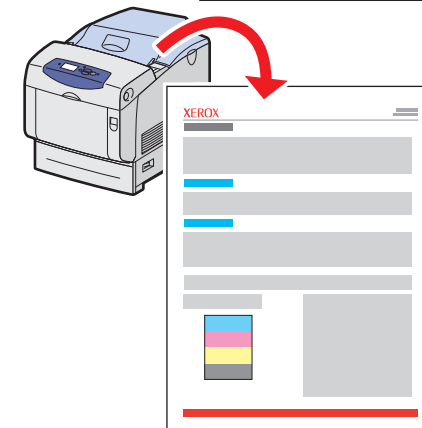
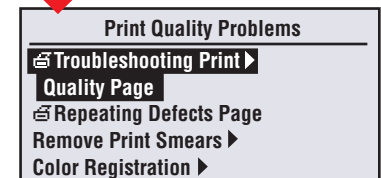
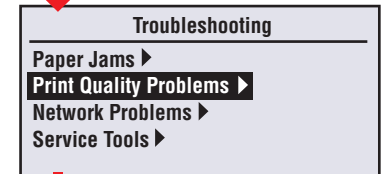
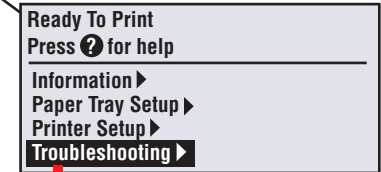
- Print the Paper Tips page for more information.
- See the [Printing Basics](#) chapter in the *User Guide*.



# Print Quality

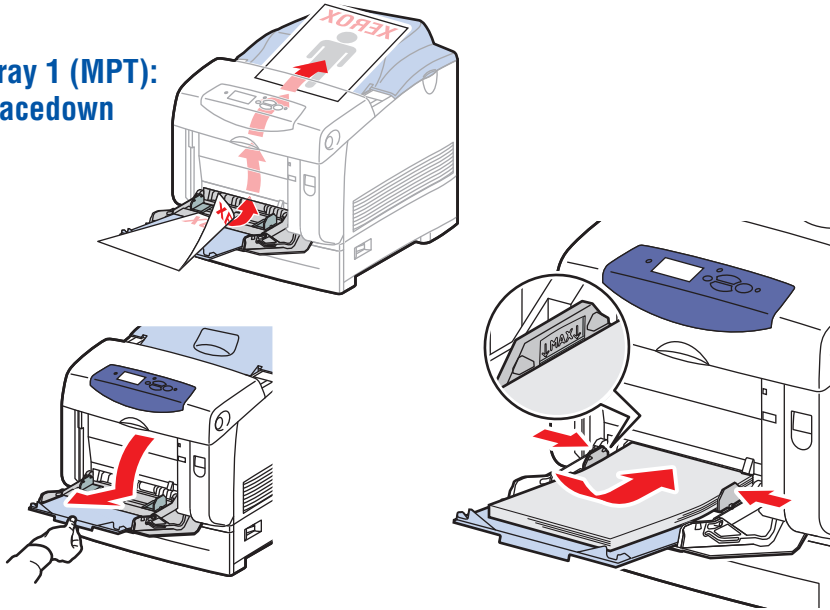
## For Print-Quality Solutions:

- See the **Print-Quality Problems** menu and print the Troubleshooting Print Quality page.
- See the [Print Quality](#) chapter in the *User Guide*.

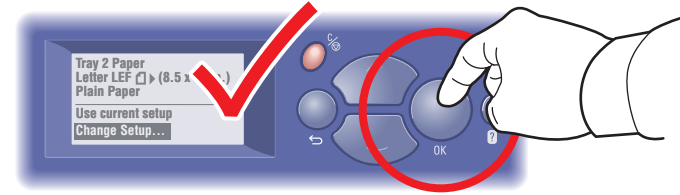
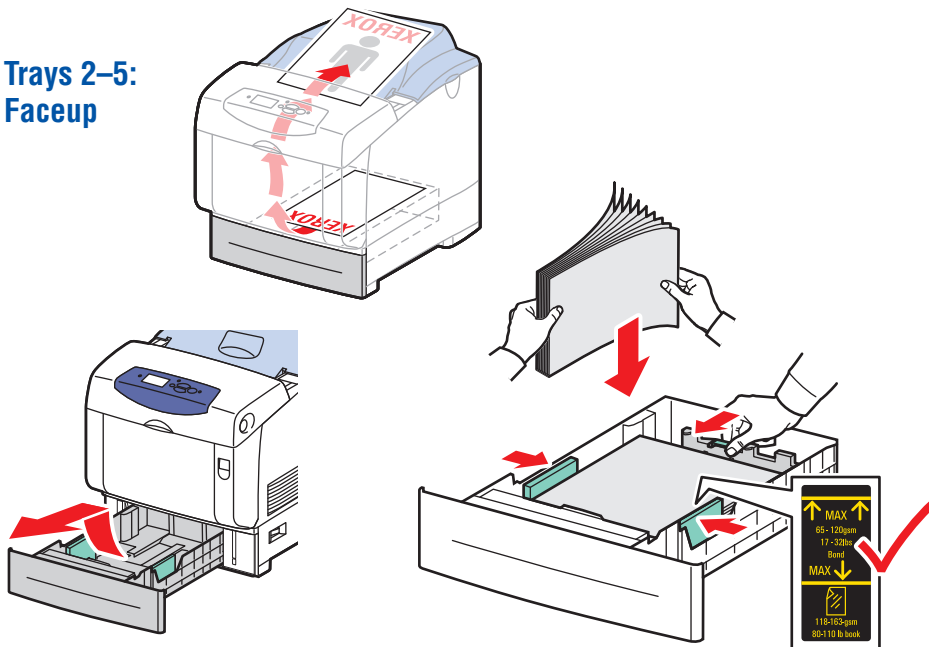


# Basic Printing

## Tray 1 (MPT): Facedown



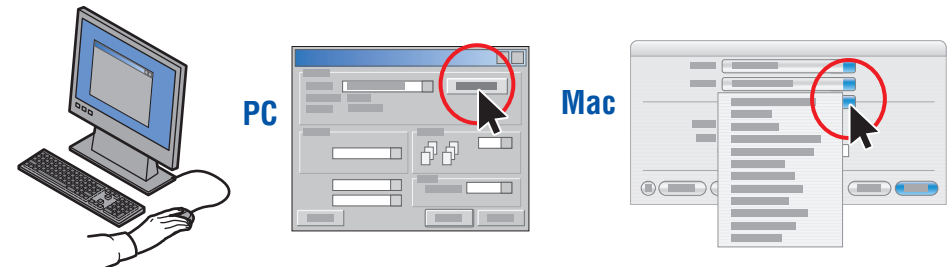
## Trays 2-5: Faceup



## When loading paper: Select appropriate settings on the control panel.

1 (MPT) 2 3 4 5	<b>Tray 1 (MPT), 2 – 5</b>
	65-90 g/m <sup>2</sup> (17-24 lb. Bond) <b>Plain Paper ✓</b>
	85-120 g/m <sup>2</sup> (22-32 lb. Bond) <b>Heavy Plain Paper ✓</b>
	100-163 g/m <sup>2</sup> (36-60 lb. Cover) <b>Thin Card Stock ✓</b>

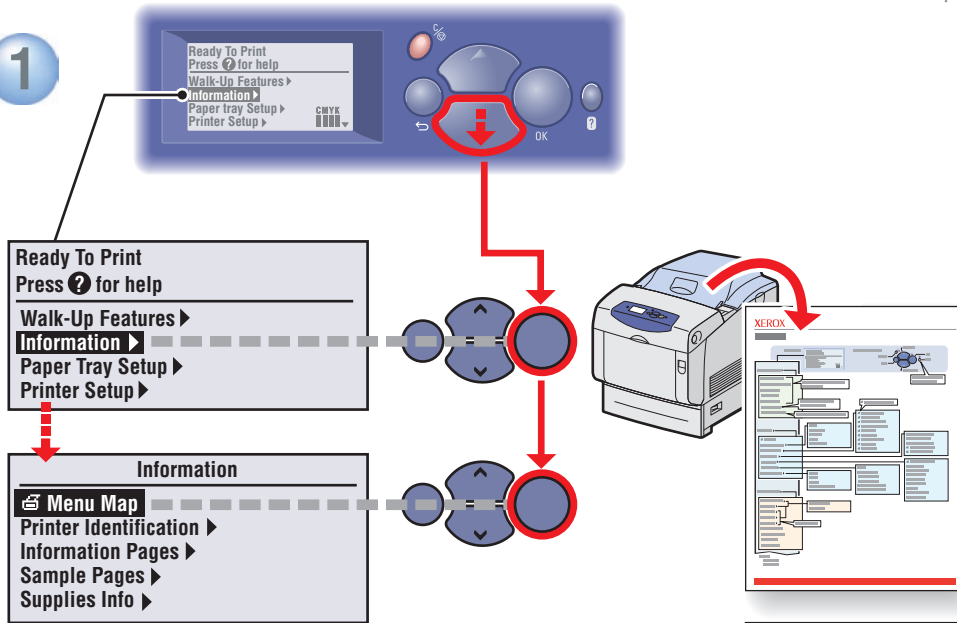
1 (MPT)	<b>Tray 1 (MPT)</b>
	160-216 g/m <sup>2</sup> (59-80 lb. Cover) <b>Thick Card Stock ✓</b>



## When Printing: Select properties. Use Xerox printer driver.

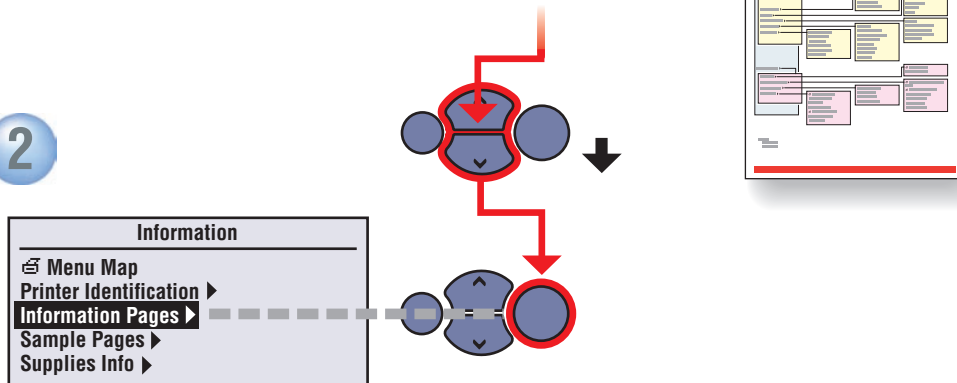
# Information Pages

1



☞ = Prints an information page.

2



# Supplies Info

## For Supplies Information:

- See the **Supplies Info** menu and print the Supplies Usage page.
- See the **Supplies** tab in the Xerox Support Centre, contact your local reseller, or visit the Xerox Supplies website.



[www.xerox.com/office/6360supplies](http://www.xerox.com/office/6360supplies)

