



Xerox EX Print Server, Powered by Fiery<sup>®</sup>,  
for the Xerox 700 Digital Color Press



**Graphic Arts Package**

© 2008 Electronics for Imaging, Inc. The information in this publication is covered under [Legal Notices](#) for this product.

45069909  
23 April 2008

# CONTENTS

<b>INTRODUCTION</b>	7
Terminology and conventions	7
About this document	8
Fiery Graphic Arts Package, Premium Edition	9
Available upgrade	10
Enabling the feature at the EX Print Server	10
Updating the status of Graphic Arts Package	11
Updating the status on Windows	11
Updating the status on Mac OS	12
Setting up your monitor and the monitor profile	13
<b>PAPER SIMULATION WHITE POINT EDITING</b>	14
Paper simulation workflow	14
Printing with default Paper Simulation	14
Paper Simulation print option	15
Paper Simulation White Point editing	15
Paper Simulation White Point dialog box	15
Editing Paper Simulation White Point	16
Printing with custom paper simulation values	20
<b>SPOT-ON WITH TWO-COLOR PRINT MAPPING</b>	23
Using Two-Color Print Mapping	23
Defining a color for Two-Color Print Mapping	24
Printing a job with Two-Color Print Mapping	26

<b>COLOR SETUP FEATURES</b>	28
<b>ColorWise Pro Tools Color Setup features</b>	28
Using Color Setup	29
<b>Control Bar</b>	30
Control Bar workflow	30
Printing with the default Control Bar	30
Control Bar pane	32
Printing with a custom Control Bar	37
<b>Configurable Auto Trapping</b>	37
Configurable Auto Trapping workflow	38
Printing with default Auto Trapping	38
Auto Trapping pane	39
Setting the Apply Auto Trapping option to On	40
Defining custom values for Auto Trapping	42
Printing with the configurable Auto Trapping feature	42
<b>Progressives</b>	43
Progressives workflow	43
Printing with default Progressives	44
Progressives pane	45
Specifying color channels	46
Printing with custom Progressives	46
<b>Halftone Simulation</b>	47
Halftone Simulation workflow	47
Halftone Simulation print option	47
Printing with pre-defined halftone screens	48
Halftone Simulation pane	49
Setting a custom halftone screen	50
Printing with custom halftone screens	51
Supported applications	51
Calibrating for custom halftone screens	52

<b>IMAGEVIEWER</b>	54
<b>Accessing ImageViewer</b>	54
<b>PREFLIGHT</b>	56
<b>Using Preflight</b>	56
<b>Setting Preflight options</b>	57
Setting preflight checks	57
Setting notification levels	57
<b>HOT FOLDERS FILTERS</b>	58
<b>About file conversion</b>	58
<b>Filters</b>	59
<b>Specifying filter settings for a Hot Folder</b>	60
About PS->PDF Normalizer	61
<b>Using the filters</b>	61
Using the CT/LW to PostScript filter	62
Using the DCS 2.0 to PostScript filter	63
Using the EPS to PostScript filter	64
Using the ExportPS filter	65
Using the JPEG to PDF filter	66
Using the PDF/X Preflight filter	67
Using the PDF2Go filter	68
Using the TIFF to PDF filter	69
Using the TIFF/IT to PostScript filter	70
<b>POSTFLIGHT</b>	72
<b>About Postflight</b>	72
Postflight Test Page	72
Postflight color-coded pages	73
Postflight reports	73
<b>Postflight print option</b>	75





<b>Postflight workflow</b>	75
Scenario 1: Diagnose an unexpected color	77
Scenario 2: Check the calibration status	79
Scenario 3: Check the quality of the output profile	80
Scenario 4: Diagnose a color problem of a specific object	81
<b>MULTIPLE PLATE SEPARATIONS</b>	82
Multiple plate separations workflow	82
Combine Separations print option	83
Supported applications	83
<b>PAPER SIMULATION</b>	84
Paper Simulation workflow	84
Paper Simulation print option	85
<b>INTEGRATED ALTONA VISUAL TEST</b>	86
Altona Visual Test file	87
Interpreting test results	88
Using a PDF/X workflow not compatible with Altona	89
<b>INDEX</b>	91

## INTRODUCTION

This document explains the Graphic Arts Package features and how they work. Because of the flexibility of the controls Graphic Arts Package provides, users in any environment can benefit from the Graphic Arts Package features. Novice users can use the default settings to obtain optimal results. Expert users with specific needs and requirements in graphic arts and other markets can also obtain optimal results by customizing the settings.

### Terminology and conventions

The documentation for the Xerox EX Print Server, Powered by Fiery, for the Xerox 700 Digital Color Press uses the following terminology and conventions.

Term or convention	Refers to
Aero	EX Print Server (in illustrations and examples)
Digital press	Xerox 700 Digital Color Press
EX Print Server	Xerox EX Print Server, Powered by Fiery, for the Xerox 700 Digital Color Press
Mac OS	Apple Mac OS X
Titles in <i>italics</i>	Other documents in this set
Windows	Microsoft Windows 2000, Windows XP, Windows Server 2003, Windows Vista
	Topics for which additional information is available by starting Help in the software
	Tips and information
	Important information
	Important information about issues that can result in physical harm to you or others

## About this document

This document describes the features that are available through print options and utilities such as ColorWise Pro Tools and Command WorkStation. The features are organized as follows:

- Features accessible from or used to set the values in ColorWise Pro Tools
  - **Paper Simulation White Point Editing** describes the white point editing feature with Color Editor.
  - **Spot-On with Two-Color Print Mapping** describes the feature used to map document colors with print colors.
  - **Color Setup** describes the following features: Control Bar, Auto Trapping, Progressives, and Halftone Simulation.
- Features accessible from Command WorkStation
  - **ImageViewer** describes how to start the ImageViewer application.
  - **Preflight** describes how to perform the Preflight check of your job.
- Features accessible from or used to set the values in utilities other than ColorWise Pro Tools and Command WorkStation
  - **Hot Folders Filters** describes the filters features.
- Other features
  - **Postflight** describes the Postflight feature and its workflow examples.
  - **Multiple Plate Separations** describes the combine separation feature for more than four plates.
  - **Paper Simulation** describes the fixed Paper Simulation feature.
  - **Integrated Altona Visual Test** describes the test integrated in the EX Print Server to check for PDF/X compatibility as tested by the Altona Test Suite.



## Fiery Graphic Arts Package, Premium Edition

The following features are included in Fiery Graphic Arts Package, Premium Edition:

Feature	Where to set values or access	Print option name	See
<b>Paper simulation white point editing</b>	ColorWise Pro Tools Color Editor	Paper Simulation	<a href="#">Paper Simulation White Point Editing</a>
<b>Spot-On: two-color print mapping</b>	ColorWise Pro Tools Spot-On	Two-Color Print Mapping	<a href="#">Spot-On with Two-Color Print Mapping</a>
<b>Control bar</b>	ColorWise Pro Tools Color Setup	Control Bar	<a href="#">Color Setup Features</a>
<b>Configurable auto trapping</b>	ColorWise Pro Tools Color Setup	Auto Trapping	<a href="#">Color Setup Features</a>
<b>Progressives</b>	ColorWise Pro Tools Color Setup	Progressives	<a href="#">Color Setup Features</a>
<b>Halftone screening</b>	ColorWise Pro Tools Color Setup	Halftone Simulation	<a href="#">Color Setup Features</a>
<b>ImageViewer</b>	Command WorkStation: ImageViewer		<a href="#">ImageViewer</a>
<b>Preflight</b>	Command WorkStation: Preflight		<a href="#">Preflight</a>
<b>Hot Folders file filters</b>	Hot Folders		<a href="#">Hot Folders Filters</a>
<b>Postflight</b>	Command WorkStation: ImageViewer	Postflight	<a href="#">Postflight</a>
<b>Multiple plate separations</b>		Combine Separation	<a href="#">Multiple Plate Separations</a>
<b>Fixed paper simulation</b>		Paper Simulation	<a href="#">Paper Simulation</a>
<b>Integrated Altona Visual Test</b>			<a href="#">Integrated Altona Visual Test</a>

## Available upgrade

The following feature package is available for the EX Print Server.

	<b>Fiery Graphic Arts Package, Premium Edition</b>	<b>To use Fiery Graphic Arts Package, Premium Edition features</b>
<b>EX Print Server</b>	Optional	Upgrade to Fiery Graphic Arts Package, Premium Edition

## Enabling the feature at the EX Print Server

If the Fiery Graphic Arts Package, Premium Edition is an optional feature for you EX Print Server, you must enable the option at the EX Print Server before you can access its features from your computer. A service technician enables the option at your site using the Feature Update or Restore/Update Server Software CD and the hardware key (dongle).

To check whether the option is enabled at the EX Print Server, do one of the following:

- Print the Configuration page (see [Configuration and Setup](#)).
- Check the Activity Monitor from the Command WorkStation main window.

## Updating the status of Graphic Arts Package

If the Fiery Graphic Arts Package, Premium Edition is an optional feature for your EX Print Server and the option is enabled at the EX Print Server, you must update the status of the option on your computer before you can access its features from your computer.

### Updating the status on Windows

Use the following procedure to update the status of Graphic Arts Package on a Windows computer.

**NOTE:** Before updating the status on a Windows computer, you must install the printer driver. For information about installing the printer driver, see [Printing from Windows](#).

---

#### TO UPDATE THE STATUS ON A WINDOWS COMPUTER

- 1 **Windows 2000:** Click Start, choose Settings, and then choose Printers.  
**Windows XP:** Click Start and choose Printers and Faxes.  
**Windows Server 2003:** Click Start, choose Control Panel, and then choose Printers and Faxes.  
**Windows Vista:** Click Start, choose Control Panel, choose Hardware and Sound, and then choose Printers.

- 2 **Right-click the EX Print Server and choose Properties.**

The Properties dialog box appears.

- 3 **Click the Accessories tab.**
- 4 **Select the Two-Way Communication option.**
- 5 **Type the IP address or DNS name and click Update.**

**NOTE:** If you use the Point and Print method to install the printer driver and printer description file, you must enable Two-Way Communication on the monitor at the EX Print Server for each connection (print, hold, or direct) before you install them on your computer. For more information about Point and Print, see [Printing from Windows](#).

- 6 **Verify that Fiery Graphic Arts Package, Premium Edition appears under Installed Options.**
- 7 **Click OK to close the dialog box.**

## Updating the status on Mac OS

Use the following procedure to update the status of Graphic Arts Package on a computer running Mac OS X.

**NOTE:** Before updating the status of Graphic Arts Package on a computer running Mac OS X, install the printer driver. For information about installing the printer driver, see [Printing from Mac OS](#).

---

### TO UPDATE THE STATUS ON A COMPUTER RUNNING MAC OS X

- 1 **Start Printer Setup Utility.**
- 2 **Select your digital press in the Printer List.**
- 3 **Choose Show Info from the Printer menu.**  
The Printer Info dialog box appears.
- 4 **Choose Installable Options.**
- 5 **Select Fiery Graphic Arts Package, Premium Edition from the GA Package list.**

**NOTE:** The Fiery Graphic Arts Package, Premium Edition option must be enabled here to use the Fiery Graphic Arts Package, Premium Edition features.

**NOTE:** If the Two-Way Communication feature is enabled, Fiery Graphic Arts Package, Premium Edition appears in the GA Package list.

- 6 **Click Apply Changes.**
- 7 **Close the dialog box.**

## Setting up your monitor and the monitor profile

Some Graphic Arts Package features require that a job be displayed with correct colors on your monitor.

The following features require the correct monitor display:

- Paper Simulation White Point editing (see [page 14](#))
- ImageViewer previewing from Command WorkStation (see [page 54](#))

To display the colors correctly on your monitor, you must set up the monitor display according to the manufacturer's recommendations and specify the correct monitor profile for your monitor.

Specify the following settings for the monitor display:

- At the monitor: Brightness, Contrast, and Temperature
- From the control panel of the operating system: Resolution, Refresh rate, and Number of colors

For more information about setting up your monitor and the monitor profile, see the documentation that accompanies the monitor.

## PAPER SIMULATION WHITE POINT EDITING

Although an ICC profile contains a definition of “white,” the white may not always visually match the human eye, requiring a perceptual adjustment. The Paper Simulation White Point editing feature allows you to perceptually adjust the hue, brightness, and saturation of the simulated paper white defined in the ICC profile.

### Paper simulation workflow

You can print a job with the Paper Simulation feature set to On from the printer driver without customizing paper simulation. Many jobs may print satisfactorily with the fixed default Paper Simulation setting. However, you can customize the paper simulation by editing the white point values with ColorWise Pro Tools Color Editor. After you customize the values, print the job with the custom paper simulation values from the printer driver by setting the Paper Simulation print option to On.

To print a job with the fixed Paper Simulation setting, use the procedure on [page 14](#). For more information about editing Paper Simulation White Point values and printing with custom paper simulation values, see [page 15](#).

### Printing with default Paper Simulation

Use the following procedure to print a job with the fixed Paper Simulation value.

**NOTE:** The procedures for printing a job from a Mac OS or a Windows computer are similar.

---

#### TO PRINT A JOB WITH DEFAULT PAPER SIMULATION

- 1 **Choose Print from your application.**
- 2 **Select EX Print Server as your printer and click Properties.**  
The Properties dialog box appears with the Fiery Printing tab selected.
- 3 **Click the Color icon.**
- 4 **Click Expert Settings.**  
The Expert Color Settings dialog box appears.
- 5 **Select Paper Simulation.**
- 6 **Click OK to close the Expert Color Settings dialog box.**
- 7 **Click OK to close the Properties dialog box.**
- 8 **Click Print.**

The job prints with the default Paper Simulation White Point setting.

## Paper Simulation print option

The following values are available for the Paper Simulation print option:

- Off (Default)
- On

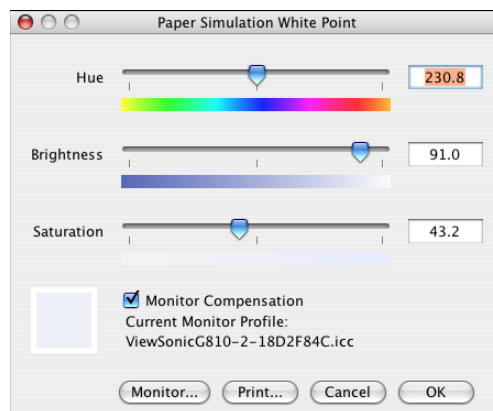
**NOTE:** If you have not edited the Paper Simulation White Point values with ColorWise Pro Tools Color Editor and selected On for this option, your job is printed with the default Paper Simulation values. If you edited the values, your job is printed with the custom Paper Simulation values.

## Paper Simulation White Point editing

Your job may print satisfactorily with the fixed Paper Simulation setting. However, you can customize the Paper Simulation setting by editing the Paper Simulation White Point values with ColorWise Pro Tools Color Editor.

### Paper Simulation White Point dialog box

The Paper Simulation White Point dialog box displays Hue, Brightness, and Saturation sliders. A graphic under each slider displays the current setting. To adjust the settings, drag the slider left or right, or type a value in the editable text field to the right of the slider bar.



**NOTE:** The sliders do not show absolute values. The slider position and associated values are relative to the paper white definition in effect when you open the dialog box.

### Hue

This setting allows you to change the hue of the Paper Simulation White Point. Specify a value between 0.0 and +359.9. If you specify a value greater than 359.9, it automatically changes to 359.9. If you specify a value less than 0.0, it automatically changes to 0.0.

### Brightness

This setting allows you to change the brightness of the Paper Simulation White Point. Specify a value between 0.0 and 100.0 (inclusive). If you specify a value greater than 100.0, it automatically changes to 100.0. If you specify a value less than 0.0, it automatically changes to 0.0.

### Saturation

This setting allows you to change the saturation of the Paper Simulation White Point. Specify a value between 0.0 and 100.0 (inclusive). If you specify a value greater than 100.0, it automatically changes to 100.0. If you specify a value less than 0.0, it automatically changes to 0.0.

### Preview

This area in the lower-left corner of the dialog box displays a preview of the paper simulation color, surrounded by a white border for contrast. The preview is based on the monitor profile you specified next to Current Monitor Profile.

To preview the color correctly with your monitor, select the Monitor Compensation option, and then select the correct monitor profile for your monitor. For more information, see [page 19](#).

**NOTE:** To display the colors correctly with your monitor, you must set the monitor and monitor settings correctly. For more information, see [page 13](#).

## Editing Paper Simulation White Point

To edit a custom profile, do the following:

- Select a CMYK Simulation Profile.
- Select Full (Output GCR) for a simulation method.
- Link the simulation profile to an output profile.

Use the following procedure to access the Paper Simulation White Point dialog box to edit the values.

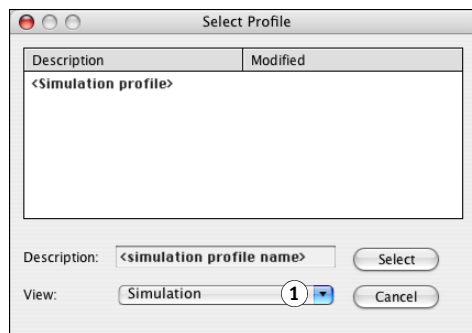
**NOTE:** If Paper Simulation is set to On, and you have defined a substitute color as C=0, M=0, Y=0, K=0, the values defined in Substitute Colors override those for Paper Simulation. For information about Substitute Colors, see [Color Printing](#).



---

**TO ACCESS THE PAPER SIMULATION WHITE POINT DIALOG BOX****1 Start ColorWise Pro Tools and connect to the EX Print Server.**

Start ColorWise Pro Tools from a stand-alone application or Command WorkStation, at your computer or the monitor connected to the EX Print Server.

**2 Click Color Editor.****3 Select Simulation from the View list.****1 Select Simulation**

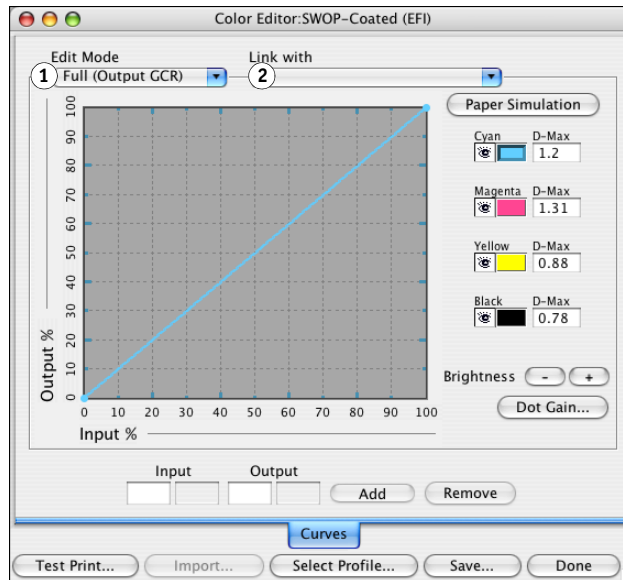
**NOTE:** You can edit the white point values of simulation profiles only. You cannot edit those of output profiles.

**4 Select a simulation profile and click Select.**

The Color Editor dialog box appears.

## 5 Select Full (Output GCR) in the Edit Mode menu.

- 1 Select Full (Output GCR)
- 2 Output profile name

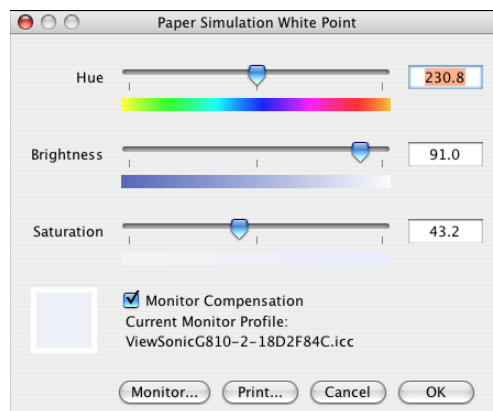


## 6 Select an output profile to link to the edited simulation profile.

**NOTE:** When you print a job with the edited simulation profile, you must select the same output profile you linked to here to realize the effect of the Paper Simulation White Point editing.

## 7 Click Paper Simulation.

The Paper Simulation White Point dialog box appears.



Use the following procedure to edit the Paper Simulation White Point values.

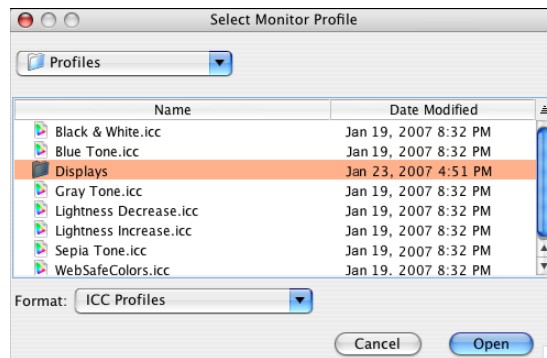
---

**TO EDIT PAPER SIMULATION WHITE POINT VALUES**

- 1 **Select the Monitor Compensation option in the Paper Simulation White Point dialog box.**
- 2 **Make sure that the correct monitor profile for your monitor is displayed next to Current Monitor Profile.**
- 3 **If the correct monitor profile is not selected, click Monitor.**

The Select Monitor Profile dialog box appears.

- 4 **Select ICC Profiles from the Format list.**



- 5 **Select the monitor profile for your monitor and click Open.**

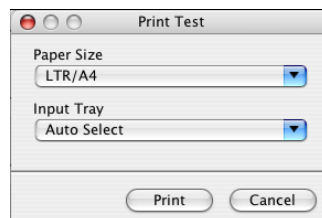
The Paper Simulation White Point dialog box appears.

- 6 **Edit the Hue, Brightness, and Saturation values.**

Edit the values by dragging the sliders or typing values in the text fields. For detailed information about the Paper Simulation White Point dialog box, see [page 15](#).

- 7 **View the changes in the preview patch in the lower-left corner of the dialog box.**
- 8 **Click Print.**

The Print Test dialog box appears.



- 9 **Select settings from the Paper Size and Input Tray lists and click Print.**

- 10 Click OK to close the Paper Simulation White Point dialog box.
- 11 Click Save in the Color Editor dialog box.

The Save dialog box appears.
- 12 Type a new name and click Save.
- 13 Quit Color Editor.

## Printing with custom paper simulation values

After you edit the paper simulation values in Color Editor, you can print a document with the custom paper simulation values from the printer driver. You can also override the setting with Command WorkStation.

**NOTE:** The procedures for printing a job from a Windows or Mac OS computer are fundamentally the same. The following procedure uses illustrations from a Mac OS computer.

Use the following procedure to print a job with the custom paper simulation values.

---

### TO PRINT A JOB WITH EDITED PAPER SIMULATION VALUES

- 1 Choose Print in your application.

The print dialog box appears.
- 2 Click Copies & Pages and choose ColorSync from the menu.

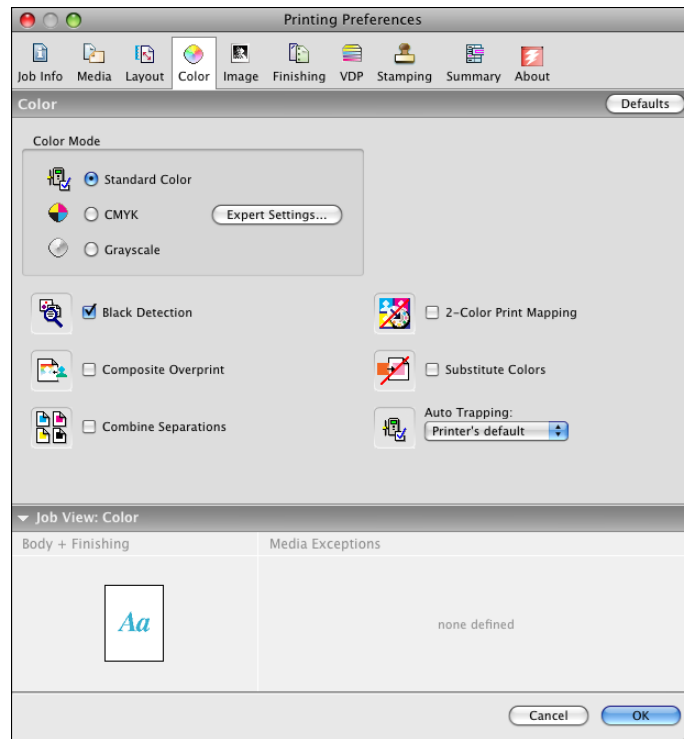
The ColorSync pane appears.
- 3 Select In Printer from the Color Conversion list.
- 4 Click Copies & Pages and choose Fiery Features from the menu.

**5 Select Two-Way Communication.**

For information about enabling Two-Way Communication, see [Printing from Mac OS](#).

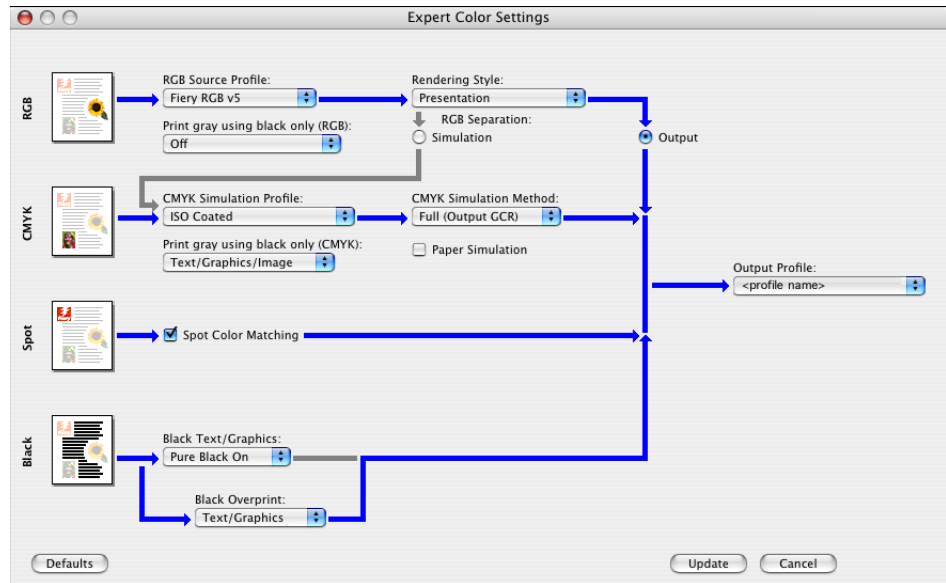
**6 Click Full Properties, and then click the Color icon.**

The Color pane appears.



## 7 Click Expert Settings.

The ColorWise Expert Settings dialog box appears.



## 8 Select the custom simulation profile from the CMYK Simulation Profile list.

Select the simulation profile you saved after editing the Paper Simulation White Point values in the previous section.

## 9 Select the Full (Output GCR) option.

## 10 Select Paper Simulation.

## 11 Select the output profile that you linked to the custom simulation profile from the Output Profile menu.

## 12 Click OK.

The Color pane reappears.

## 13 Click OK.

The job is printed using your custom CMYK Simulation Profile with the edited White Point values.

## SPOT-ON WITH TWO-COLOR PRINT MAPPING

In addition to managing “named” colors, Spot-On allows you to assign spot colors and process colors to the generic colors that are used in a job. The Two-Color Print Mapping feature is designed for print shop operators to do the proofing for a two-color press. You can print a two-color job to a two-color device by mapping the colors in a job to the colors that are already created on the device.

For information about managing named colors with Spot-On, see [Color Printing](#).

**NOTE:** The RGB colors in a document are first converted to CMYK colors and then the Two-Color Print Mapping is applied.

The following limitations apply when you use the Two-Color Print Mapping feature:

- The settings for Two-Color Print Mapping are ignored when the Composite Overprint and Combine Separation features are enabled.
- Postflight does not report on Two-Color Print Mapping, because Postflight reports the source state of a document. The color space that the digital press receives before any conversions is reported in Postflight.
- You cannot select the Two-Color Print Mapping and Substitute Color options at the same time. Also, you cannot select a substitute color to be used in the Two-Color Print Mapping feature.

### Using Two-Color Print Mapping

In the Two-Color Print Mapping feature, the colors that are used in a job are mapped with the colors to print. From the Spot-On main window, open the Define Two-Color Print Map dialog box and then reassign the document colors to the named or custom colors to print with. When the feature is turned on from the printer driver, EX Print Server replaces the document colors with the colors you defined in the Define Two-Color Print Map dialog box. You can also override the print option setting using Command WorkStation.

## Defining a color for Two-Color Print Mapping

Use the following procedure to define the color mappings in the Two-Color Print Map dialog box.

### TO DEFINE A COLOR FOR TWO-COLOR PRINT MAPPING

#### 1 Start ColorWise Pro Tools and connect to the EX Print Server.

Start ColorWise Pro Tools from a stand-alone application or Command WorkStation, at your computer or at the monitor connected to the EX Print Server.

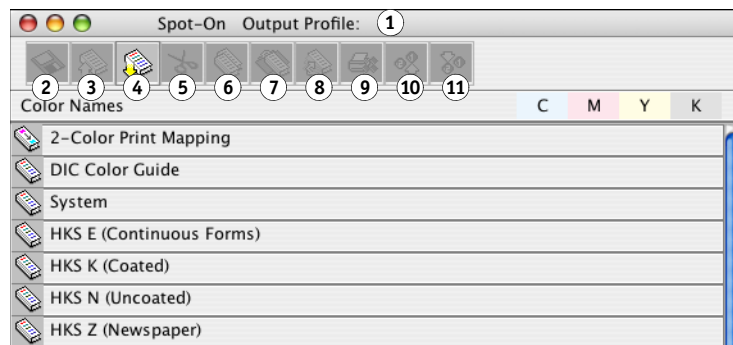
#### 2 Click Spot-On.

The Select Output Profile dialog box appears.

#### 3 Select an output profile and click OK.

The Spot-On main window appears.

- 1 Output profile
- 2 Save
- 3 Upload
- 4 Download
- 5 Cut
- 6 Copy
- 7 Paste
- 8 Close all
- 9 Print
- 10 Up
- 11 Down



**NOTE:** The 2-Color Print Mapping group always appears at the top of the list. It is not included in the priority arrangements.

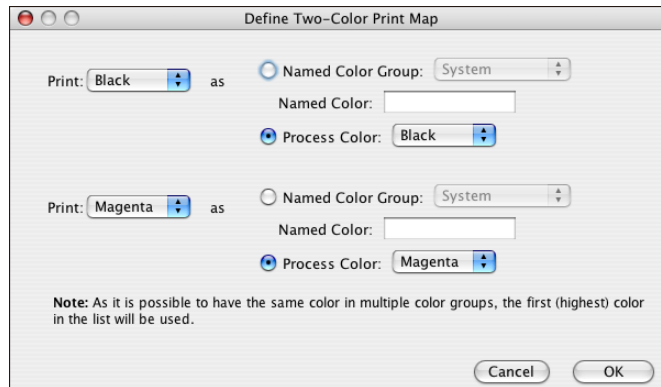
#### 4 Double-click 2-Color Print Mapping.

The two colors for mapping appear.



## 5 Double-click one of the color lines.

The Define Two-Color Print Map dialog box appears.



The document colors on the left side represent the colors that are used in a job. Map these colors to the named or process colors that you select on the right. Initially, Black and Magenta appear as placeholder colors on the left.

**NOTE:** When you change the color selection on the left, the selection on the right changes to Process Color with the same color name. This is to avoid accidentally mapping a color to a different process color.

## 6 Select a process color from the Print list on the left.

Select Cyan, Magenta, Yellow, or Black.

## 7 Select Named Color Group or Process Color on the right.

To select a named color, continue the steps. To select a process color, go to [step 10](#).

## 8 Select a group from the Named Color Group list.

Select from the list of the named color groups that are already defined in Spot-On.

The prefix of the selected group appears on the left side of the Named Color field. The suffix appears on the right side of the field.

## 9 Type the name of the named color in the Named Color field.

**NOTE:** The names are case sensitive. Type the name exactly as it appears in the list in Spot-On. If the name you typed in the Named Color field is invalid, the EX Print Server displays an error message.

**NOTE:** If the Named Color Group option is selected and the Named Color field is not filled, the EX Print Server displays an error message. Type a name in the Named Color field or select the Process Color option instead of the Named Color Group.

**10 Select Cyan, Magenta, Yellow, or Black from the Process Color list.**

**11 Repeat steps 6 through 10 for the other color to map.**

**NOTE:** You cannot select the same process color for both document colors. When a process color is selected for a document color, it is grayed out for the other document color.

**12 When you are done selecting the colors, click OK to close the dialog box.**

**13 Choose File > Save (or click the Save icon).**

The changes in the Define Two-Color Print Map are saved and the newly assigned mapping colors and values appear in the Spot-On main window.

### Printing a job with Two-Color Print Mapping

After you map the colors in the Two-Color Print Map dialog box in Spot-On, you can print a two-color job from the printer driver. You can also override the print option setting using Command WorkStation.

**NOTE:** When you print a job, select the same output profile from the printer driver as the one that was selected in the Select Output Profile dialog box. Otherwise, print mappings that are defined in Spot-On have no effect.

**NOTE:** The procedures for printing a job from a Mac OS and a Windows computer are similar.

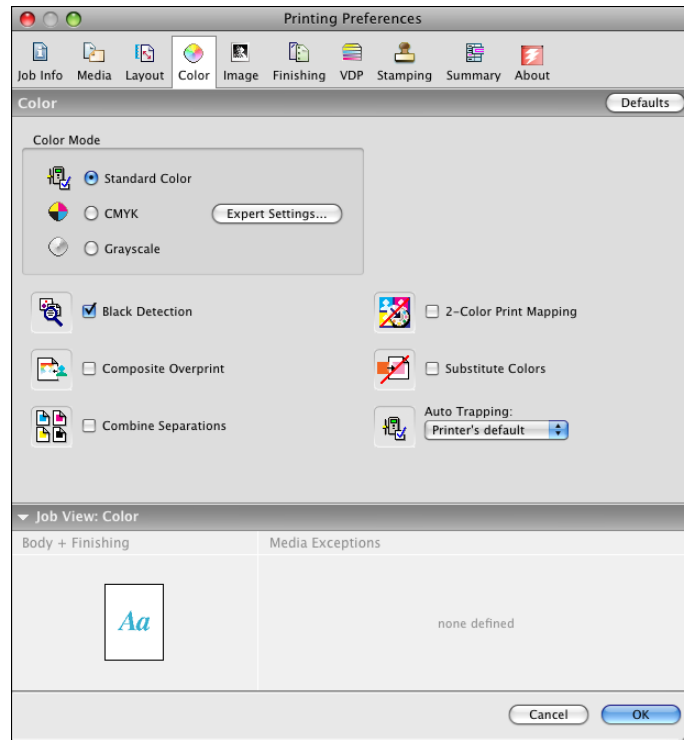
---

#### TO PRINT A TWO-COLOR JOB

- 1 Open a document in your application.**
- 2 Choose Print.**
- 3 Click Copies & Pages and choose Fiery Features from the menu.**

**4 Click Full Properties, and then click the Color icon.**

The Color pane appears.



**5 Select 2-Color Print Mapping.**

**6 Click OK.**

The job is printed with the mapping you defined in Spot-On.

## COLOR SETUP FEATURES

With Graphic Arts Package, Premium Edition, ColorWise Pro Tools Color Setup offers the following customizable features, in addition to the Color Process Flow feature:

- Control Bar
- Auto Trapping
- Progressives
- Halftone Simulation

For information about Color Process Flow, see [Color Printing](#).

**NOTE:** The ColorWise Pro Tools applications for Windows and Mac OS computers are similar.

### ColorWise Pro Tools Color Setup features

Access the Control Bar, Auto Trapping, Progressive, and Halftone Simulation features from Color Setup.

For information about these features, see the following sections:

- Control Bar (see [page 30](#))
- Auto Trapping (see [page 37](#))
- Progressives (see [page 43](#))
- Halftone Simulation (see [page 47](#))

## Using Color Setup

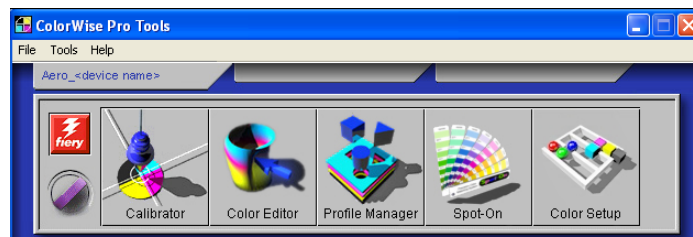
Use the following procedure to start Color Setup.

**NOTE:** For information about installing ColorWise Pro Tools and configuring a connection, see [Color Printing](#).

### TO START COLOR SETUP

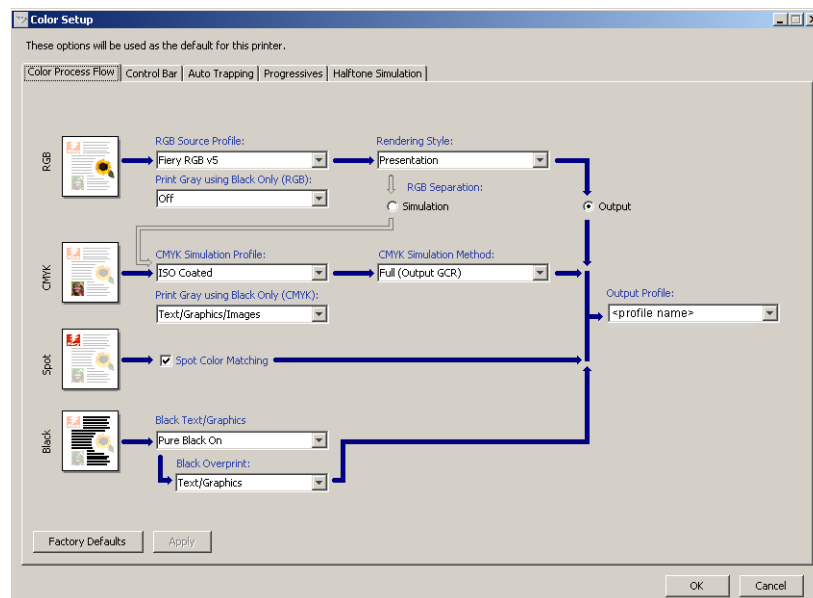
#### 1 Start ColorWise Pro Tools and connect to the EX Print Server.

**NOTE:** Start ColorWise Pro Tools from a stand-alone application or Command WorkStation, at your computer or the monitor connected to the EX Print Server. At Command WorkStation, choose Manage Color from the Server menu.



#### 2 Click Color Setup.

The Color Setup main window appears with the Color Process Flow tab selected.



## Control Bar

Control Bar allows you to add a static color bar and dynamic job information to each printed page at the user-defined location. The feature can be set as a server default or overridden on a per-job basis.

The default Control Bar is designed to fit the EX Print Server default paper size, Letter/A4, or larger. You can create Control Bars for other paper sizes.

**NOTE:** If a Control Bar does not fit on the page, it will be clipped.

**NOTE:** If a background color is defined as “white” for a user-defined Control Bar, it must be defined in the CMYK color space for the Paper Simulation feature to take effect. For more information about Paper Simulation, see [page 14](#).

### Control Bar workflow

The default Control Bar provides a color bar and dynamic job information. Print a job with the default Control Bar by setting the Control Bar print option to On from the printer driver. Many jobs print satisfactorily with the default Control Bar, but if you require your own color bars, create them by defining custom values in the Control Bar Definition dialog box. After you define a custom Control Bar in the Control Bar pane in Color Setup, you can print a job with the custom Control Bar from the printer driver.

To print a job with the default Control Bar, see the following section. For information about the Control Bar pane, see [page 32](#). To create your own Control Bars, see [page 33](#). To print a job with a custom Control Bar, see [page 37](#).

### Printing with the default Control Bar

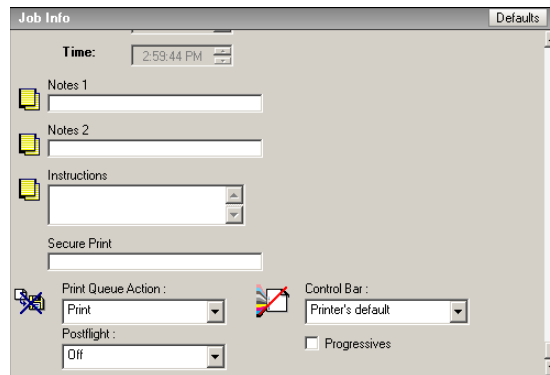
Print a job with the default Control Bar by setting the Control Bar print option to On from the printer driver.

**TO PRINT A JOB WITH THE DEFAULT CONTROL BAR**

- 1 Choose Print from your application.**
- 2 Select EX Print Server as your printer and click Properties.**

The Properties dialog box appears, with the Fiery Printing tab selected.

- 3 Click the Job Info icon.**
- 4 Select On from the Control Bar list.**



- 5 Click OK.**
- 6 Click Print.**

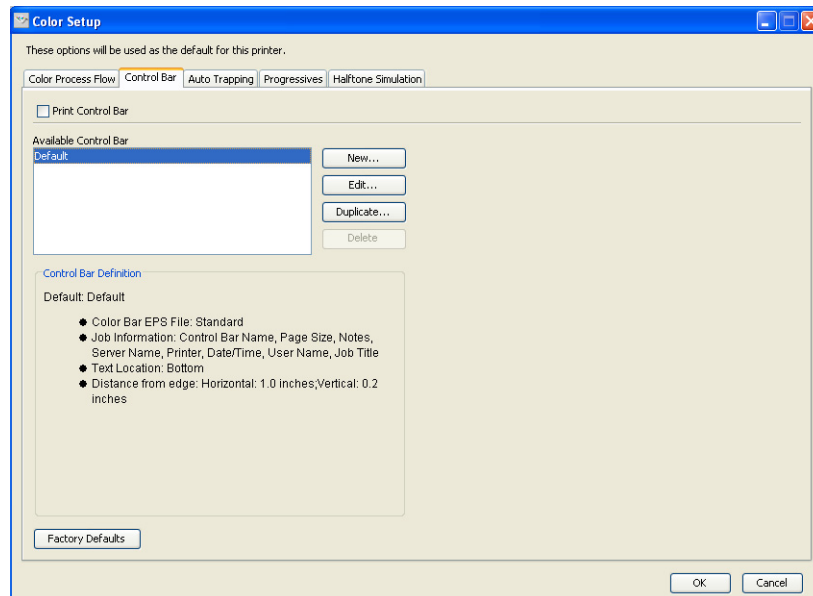
The job is printed with the default Control Bar.

- 1 Job information**
- 2 Static color bar**



## Control Bar pane

Access the Control Bar pane by clicking the Control Bar tab in the ColorWise Pro Tools Color Setup dialog box (see [page 33](#)).



The Control Bar tab allows you to do the following:

- Set the Print Control Bar option to On (see the following section).
- View the definition of a Control Bar (see [page 33](#)).
- Define a new Control Bar (see [page 33](#)).
- Edit a Control Bar (see [page 36](#)).
- Duplicate a Control Bar (see [page 36](#)).
- Delete a Control Bar (see [page 36](#)).
- Restore the factory default values (see [page 37](#)).

### Setting the Print Control Bar option to On

Selecting the Print Control Bar option sets the Printer's Default value to On. If this option is selected, a Control Bar is printed on all pages sent to the EX Print Server when Printer's default is selected from the printer driver or with Command WorkStation.



### Viewing the definition of a Control Bar

Selecting a Control Bar in the Available Control Bar list allows you to view the settings information in the Control Bar Definition area. With this feature, you can identify the Control Bar without opening the Control Bar Definition dialog box.

The following information is displayed in the Control Bar Definition area:

- Color Bar EPS File
- Job Information
- Text Location
- Distance from edge

### Defining a new Control Bar

When you open the Control Bar pane for the first time, only the default Control Bar is available in the Control Bar Definition dialog box. You can create a custom Control Bar that better fits your needs.

Use the following procedure to access the Control Bar pane and create a new Control Bar.

---

#### TO CREATE A CUSTOM CONTROL BAR

- 1 **Start ColorWise Pro Tools and connect to the EX Print Server.**
- 2 **Click Color Setup.**
- 3 **Click the Control Bar tab.**
- 4 **Click New in the Control Bar pane.**

The Control Bar Definition dialog box appears.

- 5 **Define the values for each option.**

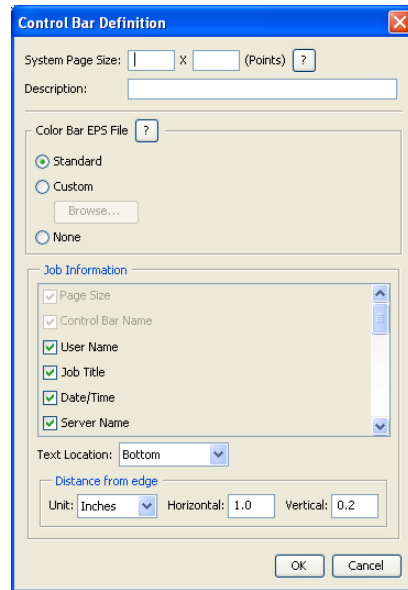
For information about Control Bar options, see [“The Control Bar Definition dialog box”](#) on page 34.

- 6 **Click OK.**

A custom Control Bar is created.

### The Control Bar Definition dialog box

The explanation of each section in the Control Bar Definition dialog box is as follows:



**NOTE:** The Control Bar Definition dialog box is displayed when you click New in the Color Setup dialog box.

**NOTE:** Each field of this dialog box initially displays the value from the Control Bar that is currently set as default, except for the System Page Size.

- **System Page Size:** A System Page Size label with two numbers is printed with each Control Bar. These numbers are the exact numbers to enter when creating a custom Control Bar. Every page produced by the EX Print Server has a System Page Size. These two numbers represent the width and height of the page, in points, as processed by the system. Page sizes that are not defined use the Default system Control Bar.

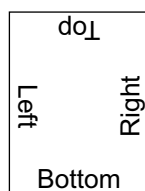
To find the System Page Size for a job, see a previously printed Control Bar on a document using the targeted paper size and orientation.

- **Description:** This field allows you to add a one-line description of the custom Control Bar for your future reference.
- **Control Bar EPS File:** This option allows you to select the following:
  - Standard: (provided as a default)
  - Custom: (user-designed EPS)
  - None: (no EPS file is required)

The EPS file contains a color bar and any logo or static information that you want to include on the page.

- **Job Information:** The options vary, but typically the following information is available, in addition to the print options you specify in the Color pane from the printer driver:
  - Page Size
  - Control Bar Name
  - User Name
  - Job Title
  - Date/Time
  - Server Name
  - Printer
  - Calibration Date/Time
  - Output Profile
  - Notes
  - Instructions
- **Text Location:** This list allows you to select the location in which you want the job information printed on the page:
  - Bottom
  - Left
  - Top
  - Right

For the location and orientation of the job information, see the following illustration.



- **Distance from the edge:** This text field allows you to define the distance from the lower-left corner at which you want the job information to begin printing. The settings to define are as follows:
  - **Units:** Select inches, millimeters, or points from the Units list.
  - **Horizontal:** Type the value.
  - **Vertical:** Type the value.

### Editing a Control Bar

You can edit all of the values in the Control Bar Definition dialog box, with the exception of System Page Size, which appears dimmed.

The System Page Size for the default Control Bar refers to different system page sizes. For other Control Bars, values are displayed in the text field.

**NOTE:** To display the Control Bar Definition dialog box for editing, select a Control Bar in the Available Control Bar list, and then click Edit.

### Duplicating a Control Bar

When you duplicate a Control Bar, all the values of the original Control Bar are displayed. You can edit and save the duplicate as a custom Control Bar.

If you edit and save a Control Bar as a custom Control Bar, you must change the System Page Size values. No two Control Bars can use the same values. If you try to save the custom Control Bar without changing the System Page Size values, a warning message appears.

Because a Control Bar is not a part of a job, a document can be printed with one Control Bar and then with another one if the Control Bar definition has changed. To keep the Control Bar and reuse it later, you must save the changes as a custom Control Bar.

**NOTE:** To display the Control Bar Definition dialog box for duplicating, select a Control Bar in the Available Control Bar list and click Duplicate.

### Deleting a Control Bar

You can delete a Control Bar from the list in the Available Control Bar dialog box. You are prompted to confirm the deletion.

**NOTE:** You cannot delete the default Control Bar.

### Restoring the factory default values

The Control Bar Definition dialog box allows you to delete all user-defined Control Bars and restore the default Control Bar to its original state by clicking Factory Defaults.

### Printing with a custom Control Bar

The procedure to print a job with a custom Control Bar is basically the same as to print with the default Control Bar (see [page 30](#)). Use the following procedure to print with a custom Control Bar.

---

#### TO PRINT A JOB WITH A CUSTOM CONTROL BAR

- 1 **Choose Print from your application.**
- 2 **Select EX Print Server as your printer and click Properties.**

The Properties dialog box appears with the Fiery Printing tab selected.

- 3 **Click the Job Info icon.**
- 4 **Select On from the Control Bar list.**

**NOTE:** Selecting On from the printer driver affects the current job only. If you selected Print Control Bar in the Control Bar pane, selecting Printer's Default has the same effect as On. Selecting Print Control Bar in the Control Bar pane sets the default value to On for all jobs.

- 5 **Click OK.**
- 6 **Click Print.**

The job is printed with the Control Bar specified in the Control Bar Definition dialog box.

## Configurable Auto Trapping

Trapping is a technique where some objects are printed slightly larger or smaller than you have specified in an application, in order to prevent white edges around the objects. These white edges, or “halos,” can be caused by factors such as misregistration, the physical properties of the toners, and the stiffness of the media.

The configurable Auto Trapping feature provides you with advanced trapping settings and gives you full control over their values. The EX Print Server is shipped with values that are optimized for the print device using regular paper, but if these values do not provide the results necessary for the media that you use, modify the values to meet your requirements.

## Configurable Auto Trapping workflow

The fixed values are set as default for Auto Trapping. The EX Print Server applies these fixed values when you set Auto Trapping to On, with generally good results. However, to customize the values for Auto Trapping, define the values in the Auto Trapping pane in Color Setup. After you define the values, print a job with Auto Trapping set to On from the printer driver.

## Printing with default Auto Trapping

You can print a job with default Auto Trapping by setting the Auto Trapping print option to On from the printer driver.

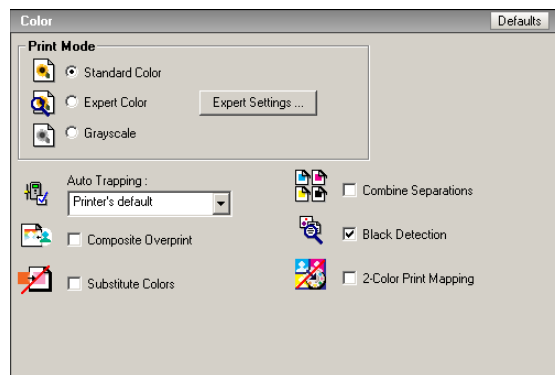
---

### TO PRINT A JOB WITH DEFAULT AUTO TRAPPING

- 1 **Choose Print from your application.**
- 2 **Select EX Print Server as your printer and click Properties.**

The Properties dialog box appears with the Fiery Printing tab selected.

- 3 **Click the Color icon.**

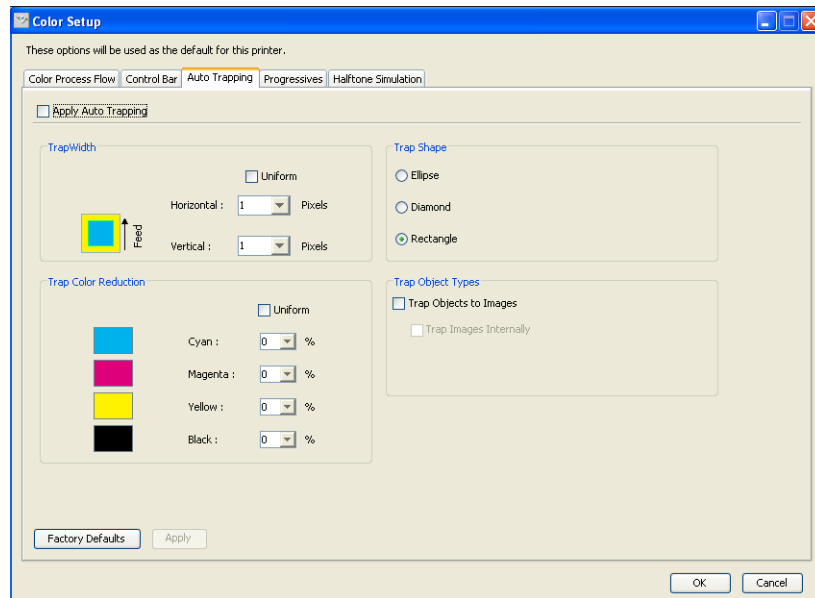


- 4 **Select On from the Auto Trapping list.**
- 5 **Click OK.**
- 6 **Click Print.**

The job is printed with the default Auto Trapping values.

## Auto Trapping pane

Access the Auto Trapping pane by clicking the Auto Trapping tab in the ColorWise Pro Tools Color Setup dialog box (see [page 42](#)).



The settings in the Auto Trapping pane allow you to perform the following tasks:

- Set the Apply Auto Trapping option to On (see the following section).
- Specify the trap width (see [page 40](#)).
- Specify the trap color reduction (see [page 40](#)).
- Specify the trap shape (see [page 41](#)).
- Specify the trap object types (see [page 41](#)).
- Restore the factory default values (see [page 41](#)).

## Setting the Apply Auto Trapping option to On

When you select the Apply Auto Trapping option, you set the Printer's default value to On. When you select Printer's default from the printer driver, the configured auto trapping is applied to the job sent to the EX Print Server.

## Specifying Trap Width

Trap Width values determine how thick the trapped areas are. Specify the following values:

- **Horizontal:** Defines the horizontal thickness of the trapped areas (0-10 pixels).
- **Vertical:** Defines the vertical thickness of the trapped areas (0-10 pixels).

When you select the Uniform option, the horizontal and vertical Trap Width values are the same. If the values were set before you selected Uniform, the higher of the two values is used for both.

A small bitmap image in the lower-left corner of the Trap/Width pane provides a dynamic visual example of the selected values.

## Specifying Trap Color Reduction

Trap Color Reduction values determine how intense the trapping effect is. The values entered reflect the percent reduction of the toner in the trap. You can enter values for the following color channels:

- **Cyan:** Defines the trap reduction in cyan (0-100%).
- **Magenta:** Defines the trap reduction in magenta (0-100%).
- **Yellow:** Defines the trap reduction in yellow (0-100%).
- **Black:** Defines the trap reduction in black (0-100%).

A 100% reduction results in no toner intensity applied to the trap. A 0% reduction results in full toner intensity.

When you select the Uniform option, all four Trap Color Reduction values are the same. If the values were set before you selected Uniform, the highest value is used for all.

A small bitmap image to the left of each color in the Trap Color Reduction pane provides dynamic visual examples of the selected values.



### Specifying Trap Shape

Trap Shape represents how a single pixel appears when trapped against a contrasting background. With elements bigger than one pixel, the shape, or part of the shape, is only visible at the corners of objects. Select any of the following shapes:

- Ellipse
- Diamond
- Rectangle

### Specifying Trap Object Types

When no option is selected in the Trap Object Types area, only trapping of objects (text and graphics) against objects is applied. Select any of the following:

- **Trap Objects to Images:** Auto trapping is applied to boundary areas between objects and images.
- **Trap Images Internally:** Auto trapping is applied to every individual pixel of an image.

This option is available only when you select Trap Objects to Images. If the Trap Objects to Images option is cleared, the Trap Images Internally option appears dimmed.

### Restoring factory defaults

Click Factory Defaults to delete all user-defined settings for Auto Trapping and restore the factory default settings.

## Defining custom values for Auto Trapping

Use the following procedure to select the Auto Trapping settings and define custom values.

---

### TO DEFINE AUTO TRAPPING VALUES

- 1 **Start ColorWise Pro Tools and connect to the EX Print Server.**
- 2 **Click Color Setup.**
- 3 **Click the Auto Trapping tab.**
- 4 **Define a value for each option in the Auto Trapping pane.**

For information about the options in the Auto Trapping pane, see [page 39](#).

- 5 **Click Apply.**

The defined Auto Trapping values are applied.

## Printing with the configurable Auto Trapping feature

After you define the Auto Trapping values, print a job with the Auto Trapping feature by setting the Auto Trapping print option to On from the printer driver. You can change the setting for this print option using Command WorkStation.

**NOTE:** If the Auto Trapping values are changed, reRIPping is required to print a job with the new values.

Use the procedure on [page 31](#) to print a job with custom Auto Trapping values from the printer driver.

**NOTE:** Selecting On from the printer driver affects the current job only. Selecting Apply Auto Trapping in the Auto Trapping pane in Color Setup sets the default value for all jobs, and allows you to select Printer's default from the printer driver.

The job is printed with the Auto Trapping values defined in the Auto Trapping pane.

## Progressives

The term “Progressives” refers to printing variations in a multi-color document. The variations may use from one to all of the available color channels in a print device. The majority of printing processes that involve more than one or two colorants apply the colorants sequentially. Traditionally, progressives are the intermediate states after some and before all colorants have been applied. The Progressives feature is more flexible, because it allows you to select which color is printed, using up to four sheets per original document page.

**NOTE:** The Progressives feature is designed to show you the toner separations used by the job on the print device. The feature is not intended to be used to proof for another non-Fiery driven print device.

**NOTE:** Progressives show the separations that the EX Print Server sends to the print device, not the separations contained in the job source file.

**NOTE:** Progressives is a “reporting” feature. It is not designed to be used with production features such as VDP and Imposition. Progressives is offered for diagnostic situations. With high volume applications or production environments, use Progressives only on the individual pages that need testing.

### Progressives workflow

You can inspect the result of each channel with the default values for color channels in Progressives. However, if you must customize the selection of color channels or number of sheets to print, you can do so by specifying the color channels in the Progressives pane in Color Setup. After specifying the color channels, print a job with the customized Progressives by setting the print option to On from the printer driver.

**NOTE:** You cannot use the Progressives and Postflight features at the same time. A constraint is set for these print options from the printer driver.

**NOTE:** Clearing plates in ImageViewer does not have an effect on a Progressives job printed from ImageViewer. It prints with the values specified in the Progressives pane. For more information, see [“ImageViewer”](#) on page 54.

## Printing with default Progressives

Print a job with default Progressives by setting the Progressives print option to On from the printer driver.

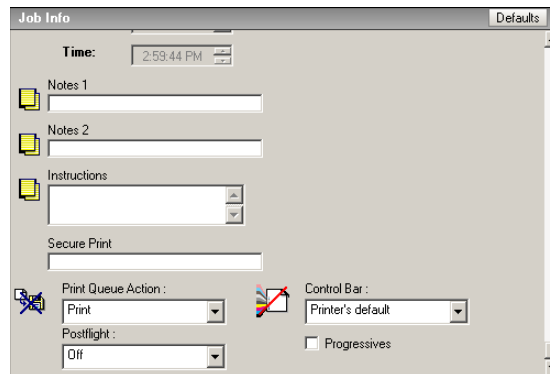
---

### TO PRINT A JOB WITH DEFAULT PROGRESSIVES

- 1 Choose Print from your application.
- 2 Select EX Print Server as your printer and click Properties.

The Properties dialog box appears with the Fiery Printing tab selected.

- 3 Click the Job Info icon.
- 4 Select Progressives.

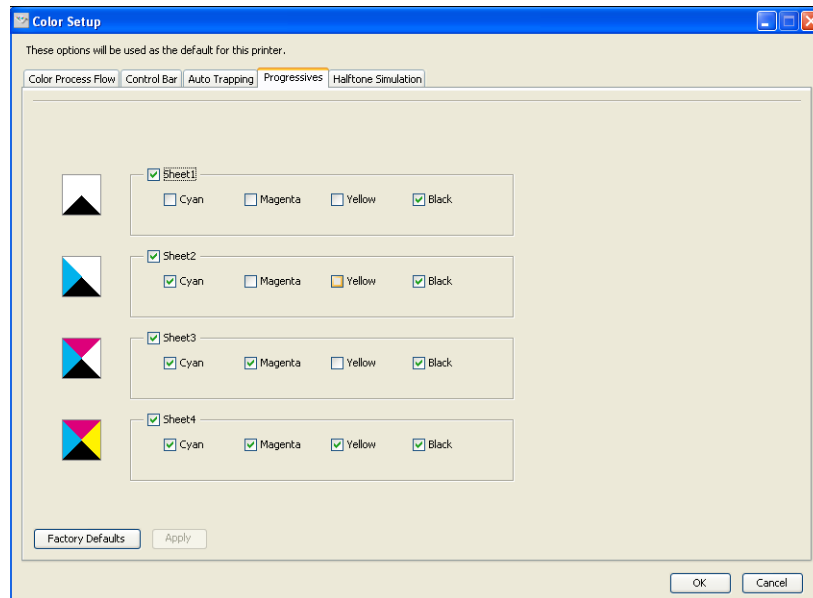


- 5 Click OK.
- 6 Click Print.

The job is printed with the default Progressives.

## Progressives pane

Access the Progressives pane by clicking the Progressives tab in ColorWise Pro Tools Color Setup. For more information about accessing the pane, see the procedure on [page 50](#).



The settings in the Progressives pane allow you to do the following:

- Specify sheets (1-4) and colors per sheet to print (see the following section).
- Restore the factory default values (see [page 45](#)).

### Specifying sheets and colors

At least one colorant (Cyan, Magenta, Yellow, or Black) must be selected for each sheet and at least one sheet must be selected.

Small bitmap images to the left of each row dynamically change to reflect your selections.

### Restoring factory defaults

Clicking Factory Defaults allows you to delete all user-defined settings for the Progressives feature and restore the default settings.

Factory default values are set as follows:

- Sheet 1: Black
- Sheet 2: Black + Cyan
- Sheet 3: Black + Cyan + Magenta
- Sheet 4: Black + Cyan + Magenta + Yellow

These selections are arbitrary, independent of the source job and the printing order of the digital press. With this selection, the first sheet includes the black plate only, because it is often the most important plate when looking at separations. The other colors are added in a “progressive” order.

When you return to the Progressives tab, the set of selections you last made is displayed.

The colors included do not have to represent the actual sequence applied by the digital press, which provides more flexibility for analyzing the image composition.

## Specifying color channels

Use the following procedure to access the Progressives pane and specify color channels.

---

### TO ACCESS THE PROGRESSIVES PANE AND SPECIFY COLOR CHANNELS

- 1 **Start ColorWise Pro Tools and connect to the EX PRINT SERVER.**
- 2 **Click Color Setup.**
- 3 **Click the Progressives tab.**
- 4 **Specify the color channels in the Progressives pane.**

For information about the options in the Progressives pane, see [page 45](#).

- 5 **Click Apply.**

The specified color channels are applied.

## Printing with custom Progressives

After specifying the color channels, print a job with custom Progressives by setting the Progressives print option to On from the printer driver.

**NOTE:** Alternatively, you can send a job with the default Progressives setting and change the print option setting using Command WorkStation.

Use the same procedure on [page 44](#) to print a job with the custom Progressives feature from the printer driver. The printed job reflects the Progressives settings you defined in the Progressives pane.

## Halftone Simulation

When proofing, we recommend that you print in contone mode, which uses the best color in the Fiery system. For advanced proofing purposes, Graphic Arts Package offers user-controlled halftone generation. Halftoned proofs simulate, with reasonable accuracy, the final dots imaged on films or plates for offset printing. The halftone screening feature allows you to define the custom screening functions applied to your print job.

### Halftone Simulation workflow

You can select pre-set halftone screens to print jobs with good results. When you must customize the values for a halftone screen, define a custom halftone in your application or at Color Setup, and then select the screen in the Halftone Simulation print option from the printer driver.

For information about the print option and the procedure to print with the pre-defined halftone screens, see the following section. For information about the Halftone Simulation pane and the procedure to specify custom halftone screen values, see [page 49](#).

### Halftone Simulation print option

Access the halftone screening feature through the Halftone Simulation print option. Select from the following option items:

- **Application Defined:** Uses a pre-defined halftone screen specified in an application. For information about the supported applications, see [page 51](#).
- **Newsprint:** Uses a pre-defined halftone screen that looks and feels like a newspaper.
- **User Defined Screen1/2/3:** Applies a user-defined halftone screen based on the settings in ColorWise Pro Tools Color Setup.

**NOTE:** Use Newsprint and User Defined Screen1/2/3 with all applications, including Microsoft Office.

## Printing with pre-defined halftone screens

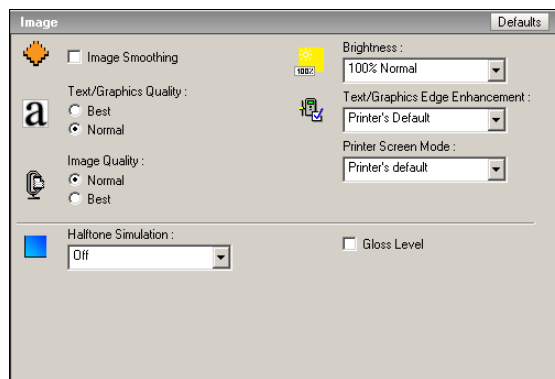
Use the following procedure to print a job with a pre-defined default halftone screen from the printer driver.

---

### TO PRINT A JOB WITH A DEFAULT HALFTONE SCREEN

- 1 **Choose Print from your application.**
- 2 **Select EX Print Server as your printer and click Properties.**

The Properties dialog box appears with the Fiery Printing tab selected.
- 3 **Click the Image icon.**
- 4 **Select a pre-defined halftone screen from the Halftone Simulation list.**



For more information, see [page 47](#).

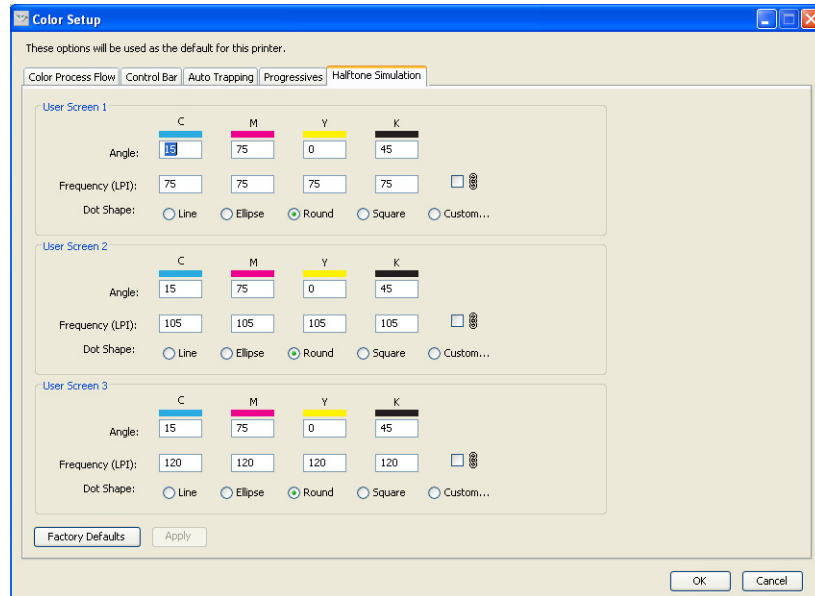
- 5 **Click OK to close the Properties dialog box.**
- 6 **Click Print.**

The job is printed to the EX Print Server with the pre-defined halftone screen.



## Halftone Simulation pane

You can define three custom halftone screens on the Halftone Simulation pane.



For each of these screens, you can define the following values:

### Angle

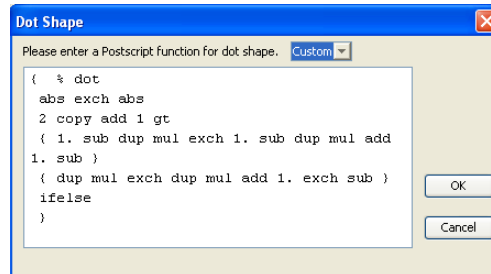
Type a number (from 0-360) for each color: Cyan, Magenta, Yellow, and Black.

### Frequency (LPI)

Type a number for each color: Cyan, Magenta, Yellow, and Black. Select the check box next to the link icon to make the values for Frequency (LPI: lines per inch) the same for all four channels. Frequency refers to the number of rows of spots that combine to form a halftone dot.

### Dot shape

Select a PostScript function for dot shape. When you select Custom, the Dot Shape dialog box appears. This dialog box provides a text field in which you type a PostScript function. When this dialog box first opens, it reflects the last custom-defined dot shape.



### Setting a custom halftone screen

Use the following procedure to access the Halftone Simulation pane and specify a custom halftone screen.

---

#### TO SPECIFY A CUSTOM HALFTONE SCREEN

- 1 **Start ColorWise Pro Tools and connect to the EX Print Server.**
- 2 **Click Color Setup.**
- 3 **Click the Halftone Simulation tab.**
- 4 **Specify the angle, frequency, and dot shape for a custom halftone screen.**

For information about the options on the Halftone Simulation pane, see [page 49](#).

- 5 **Click Apply.**

The specified settings for Angle, Frequency, and Dot Shape are applied to the custom halftone screen.

## Printing with custom halftone screens

After specifying the halftone screen values for User Screen 1, User Screen 2, or User Screen 3, select a corresponding custom screen name from the printer driver. Use the same procedure on [page 48](#) to print a job with a custom halftone screen.

**NOTE:** Alternatively, you can send a job with a default halftone screen and change the print option setting using Command WorkStation.

The printed job reflects the settings you defined on the Halftone Simulation pane.

## Supported applications

The following applications have been tested with Mac OS and Windows for compatibility with the Application Defined setting in the Halftone Simulation print option. Other applications should work as well, as long as they are using standard PostScript conversions on halftone screen definitions and the parameters used in the definitions are kept within the physical limitations of the digital press.

- Adobe Acrobat
- Adobe Illustrator
- Adobe InDesign
- Adobe PageMaker
- Adobe FreeHand
- QuarkXPress

## Calibrating for custom halftone screens

When color quality is important, make sure that the EX Print Server is calibrated for the particular halftone screen you use. Changing a halftone screen usually modifies the color response of the digital press.

The best color is achieved when an Output profile that is associated with the appropriate calibration response is selected at print time. However, when custom halftones are specified, the EX Print Server does not have adequate information about the resulting color response. For this reason, achieving good color with custom halftone screens is often possible only when you perform custom halftone calibration and use a profile based on this custom halftone.

Use the following procedure to calibrate the EX Print Server for custom halftone screens.

---

### TO CALIBRATE THE EX PRINT SERVER FOR CUSTOM HALFTONE SCREENS

- 1 **Prepare the measurement instrument you use for calibration.**
- 2 **On the User Software DVD, open the folder that contains the custom halftone calibration files.**

The folder locations for Mac OS and Windows are as follows:

**Mac OS:** Mac Color Files:Calibration Files:Halftone Calibration Files:Photoshop or Other Applications

**Windows:** Windows Color Files\Calibration Files\Halftone Calibration Files\Photoshop or Other Applications

The folder contains images of the measurement pages for various instruments and page sizes. If you print halftone screens only from Adobe Photoshop, open the Photoshop folder; otherwise, open the Other Applications folder.

**NOTE:** When opening or printing these files, never “color-manage” using PostScript Color Management or ICC profiles that provide color conversions.

- 3 **From Photoshop, open the image file that corresponds to your instrument and page size. From other applications, open a blank document and place the EPS file that matches your instrument and page size.**

The images were prepared for the final sheet page size. If you are placing an image, do so using no margins. Ignore warnings that the image may be clipped.

**NOTE:** If you use these measurement pages with the EX Print Server standard screens, make sure to properly set the PPD print option that controls the screen.

#### 4 Print the measurement page using your custom halftone and other print option settings.

This page is now the custom calibration measurement page.

You must print this measurement page with the CMYK Simulation Profile print option set to ColorWise Off, which produces an uncalibrated page.

**NOTE:** To calibrate your digital press, you must print CMYK patches in the raw state of the digital press. Except for the Output Profile print option, the ColorWise print options are irrelevant and will be ignored. Use the Output Profile setting that corresponds to the type of paper you are using.



To increase the speed and reliability of the calibration, print your measurement page, with the appropriate print option settings, to a PostScript file. The next time you calibrate, download this PostScript file. Retaining this file in the Hold queue of the EX Print Server makes the entire calibration process even faster.

#### 5 Use ColorWise Pro Tools Calibrator to perform the calibration.

**NOTE:** Do not use the Print button to generate the measurement page in Calibrator. Use the measurement page that you printed in [step 4](#).

For information about Calibrator, see [Color Printing](#).

## IMAGEVIEWER

ImageViewer allows you to soft proof and adjust colors in a job before it is printed. You can use the preview in ImageViewer to verify job placement, orientation, and content, as well as general color accuracy. If the job contains halftone screened settings, the preview shows a composite view of all separations at the dot level. You can select to display the plate data for each process color independently or in combination with the other colors, allowing inspection of individual plate data or a combination of any range of plates.

### Accessing ImageViewer

Start ImageViewer from either the Actions menu or Preview window of Command WorkStation.

---

#### TO START IMAGEVIEWER FROM THE ACTIONS MENU

- 1 In the Active Jobs window of Command WorkStation, select the job that you want to preview.

**NOTE:** ImageViewer recognizes only jobs that show processed/held (dark yellow) status. Processed/held jobs are also indicated by the raster job icon (page icon ringed with a halo).

- 2 If needed, choose Process and Hold from the Actions menu to move the job to processed/held status.

- 3 To start ImageViewer, do one of the following:

- Choose Launch EFI ImageViewer from the Actions menu.
- Right-click the selected job and choose Launch EFI ImageViewer from the menu that appears.

The ImageViewer main window appears.

---

**TO START IMAGEVIEWER FROM THE PREVIEW WINDOW**

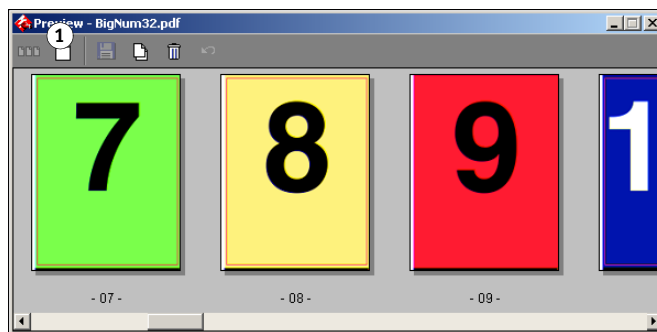
- 1 In the Active Jobs window of Command WorkStation, select the job that you want to preview.

**NOTE:** ImageViewer recognizes only jobs that show processed/held (dark yellow) status.

- 2 If needed, choose Process and Hold from the Actions menu to move the job to processed/held status.
- 3 Choose Preview from the Actions menu.

Page thumbnails appear in the Preview window.

- 1 Click for full-screen preview



- 4 To start ImageViewer, do one of the following:

- Select the thumbnail of the page that you want to soft proof, and click the Full-Screen Preview button.
- Double-click the thumbnail of the page that you want to soft proof.

The ImageViewer main window appears.

For information about using the ImageViewer application, see ImageViewer Help.



## PREFLIGHT

The Preflight feature performs a simple check of the most common areas of error to ensure that the job will print successfully and to the expected quality on the selected printing device.



This feature is accessible from Command WorkStation. For more information about Command WorkStation, see [Utilities](#) and Command WorkStation Help.

### Using Preflight

Use the following steps to preflight a job.

---

#### TO PREFLIGHT A JOB

- 1 **Select a spooled/held job in the Active Jobs window and choose Actions>Preflight.**
- 2 **Set a notification level for each error or use the default Preset.**  
For more information about setting preflight options, see [page 57](#).
- 3 **Click Save to save the settings as a new preset if you want to use them again.**
- 4 **Click Preflight to perform the Preflight check.**
- 5 **Click Save to save the report as a PDF.**
- 6 **Click Print Report to print the report.**
- 7 **Click Preflight Again to repeat the preflight check.**
- 8 **Click Close to exit Preflight.**

#### Supported file formats for preflight

The following file formats are supported for preflight:

- PostScript
- PDF
- EPS
- PPML
- Creo VPS
- VIPP

**NOTE:** TIFF and PCL files are **not** supported for Preflight checks.



## Setting Preflight options

Before performing the preflight check on your job, specify the following preflight checks and notification levels.

### Setting preflight checks

You can set preflight checks for the following:




- **Fonts:** When missing and When substituted
- **Spot Colors:** When missing
- **Low-Res Images:** When image resolution is less than specified dpi
- **VDP Resources:** When not found


You can choose to Preflight individual VDP resources.

- **Hairlines:** When line width is less than specified point size
- **Overprint:** When overprint is detected
- **Postscript:** When any Postscript error is found
- **Stop preflight on first error:** When any error is found

### Setting notification levels

For each preflight category, you can specify a notification level:

- **Critical:** marks any errors with a Critical icon (  ).
- **Warning:** marks any errors with a Warning icon (  ).
- **Message:** marks any errors with a Message icon (  ) and provides information.
- **Ignore:** skips check of that category.

A category with no errors is marked with a Pass icon (  ).

## HOT FOLDERS FILTERS

This chapter describes how to configure the Hot Folders filters to convert various files to PostScript or PDF (Portable Document Format), or to preflight certain files.

For information about operating systems that support Hot Folders, see [Welcome](#).  
For information about installing the Hot Folders application, see [Utilities](#).

For information about using the Hot Folders application, see Hot Folders Help.



### About file conversion

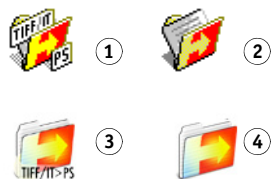
Hot Folders filters allow you to convert certain file formats to PostScript or PDF or to preflight files for conformity. File conversion and preflighting take place on your computer within Hot Folders, which saves EX Print Server resources. You can print files directly from Hot Folders filters without starting the application from which they were created.

Two types of filters are available: Exclusive and Non-exclusive. A Hot Folder configured with an Exclusive filter processes the defined file type(s). No other file formats, including the default file formats, are processed. When you select an Exclusive filter, you disable all other filters.

Non-exclusive filters allow Hot Folders to accept multiple default file formats, such as PostScript, PDF, TIFF, and EPS. Non-exclusive filters can also be used with other Non-exclusive filters.

When you configure an Exclusive filter to a Hot Folder, the Hot Folder icon changes, and is renamed to reflect the Exclusive filter.

- 1 Hot folder with Exclusive filter (Windows)
- 2 Standard Hot Folder (Windows)
- 3 Hot Folder with Exclusive filter (Mac OS)
- 4 Standard Hot Folder (Mac OS)



## Filters

The following table describes the available filters and indicates whether the filter is Exclusive or Non-exclusive:

Filter name	Type of filter	Description	See
CT/LW to PostScript	Exclusive	Converts multiple CT (Contone), LW (Line Work), or FP (Final Page) files into a single combined PostScript file.  CT/LW files contain information about photographic imagery, line art images, or text and lines from drawings. Together, CT and LW files determine the appearance of the final output.	<a href="#">page 62</a>
DCS 2.0 to PostScript	Exclusive	Converts DCS 2.0 files to pre-separated PostScript files, with one separation per page.  Developed by QuarkXPress, the DCS 2.0 file is a picture format definition for electronic color separations.  This filter accepts: Single/Multiple file DCS, no composite Single/Multiple file DCS with grayscale composite Single/Multiple file DCS with color composite	<a href="#">page 63</a>
EPS to PostScript	Exclusive	Converts EPS files to PostScript files and provides options for scaling and positioning the output.	<a href="#">page 64</a>
ExportPS	Exclusive	Processes ExportPS files and converts them to PostScript or PDF files.	<a href="#">page 65</a>
JPEG to PDF	Non-exclusive	Converts JPEG files to PDF files and provides options for scaling and positioning the output.	<a href="#">page 66</a>
PDF/X Preflight	Exclusive	Indicates if the PDF job meets PDF/X specifications.  This filter allows PDF/X-1a or PDF/X3-compliant jobs to be downloaded to the EX Print Server.	<a href="#">page 67</a>
PDF2Go	Exclusive	Processes PDF2Go files and converts them to PostScript or PDF files.  Developed by Creo-Scitex, the PDF2Go file is a PDF output that contains PDF layers or rasterized CT and LW, each with a different resolution.	<a href="#">page 68</a>
TIFF to PDF	Non-exclusive	Converts TIFF files to PDF files and provides options for scaling and positioning the output.  This filter accepts all TIFF files up to TIFF 6.0.	<a href="#">page 69</a>
TIFF/IT to PostScript	Exclusive	Converts TIFF/IT files to pre-separated PostScript files, with one separation per page.  TIFF/IT-p1 is a common file format for the transfer of final print job data from one print platform to another. It is a widely used format for prepress preparation in traditional printing environments.	<a href="#">page 70</a>

**NOTE:** Microsoft Office filters and the PDF to PS level 3 filter are offered as standard.

## Specifying filter settings for a Hot Folder

After specifying the filter settings and options for your Hot Folder, drag and drop the proper file formats onto your Hot Folder to begin the conversion process.

Open the Filter Settings dialog box from the Folder Properties dialog box.

---

### TO SELECT A FILTER SETTING

- 1 From the Hot Folders Control Panel, select the Hot Folder and click Properties.**

- 2 Select Filter Settings and click Define.**

The Filter Settings dialog box appears, allowing you to select the filter and configure the settings.

For Windows, filters are color-coded. Exclusive filters are blue and Non-exclusive filters are black. For Mac OS, Exclusive and Non-exclusive filters are indicated after the filter type names.

- 3 Select the filter that you want to use for the Hot Folder.**

If you select an Exclusive filter, you cannot select any other filter.

- 4 Right-click or double-click the filter name and select Properties.**

For more information, see [“Using the filters”](#) on page 61.

- 5 To convert all PostScript files to PDF automatically, select Convert PS to PDF and a job option from the Distiller Profile menu in the PS->PDF Normalizer pane.**

For information about PS->PDF Normalizer, see the following section.

**NOTE:** You must have started Adobe Acrobat Distiller at least once on your computer before using the Hot Folder application.

- 6 Click OK.**

## About PS->PDF Normalizer

The PS->PDF Normalizer feature offers the Convert PS to PDF option.

**NOTE:** The Convert PS to PDF option is available only when Acrobat Distiller is installed on the same system as the Hot Folders application.

### Convert PS to PDF

Although many filters output PostScript by default, this option allows you to further convert PostScript to PDF. This is a global setting that affects all PostScript files for a particular Hot Folder. This setting affects all PostScript output from all filters.

Since Convert PS to PDF affects all PostScript output files, turning on this setting may not be suitable in certain printing workflows.

For example: Both the DCS 2.0 and TIFF/IT filters output pre-separated PostScript files, one separation file per page. In order to print these pre-separated files as a composite image, you must select the Combine Separation option in the Job Settings. However, the Combine Separation feature accepts only the PostScript type files. Selecting the Convert PS to PDF option results in printing multiple grayscale pages, instead of a composite color page of an image.

### Distiller Profile

This menu displays all the available Distiller job options. This setting is used to control the quality of the PostScript to PDF conversion. The Hot Folders application retrieves the job options from the location set by Distiller. If you create and save your custom Distiller job options elsewhere, the custom job options must be manually copied to the Distiller\Settings folder.

## Using the filters

Certain filters provide extra user control and conversion settings. To access these settings, right-click or double-click the Plugin Name in the Filter Settings dialog box.

This section describes each filter and its optional settings.

**NOTE:** The procedures for using the filters from a Mac OS or a Windows computer are similar. The following procedures use illustrations from a Windows computer.

## Using the CT/LW to PostScript filter

The CT/LW filter accepts multiple CT (Contone) and LW (Line Work) files and an FP (Final Page) file. It determines the page dimensions of the combined file based on the FP, LW, and CT files, in that order. Spot colors are converted to process CMYK using conversion values specified in the CT/LW files. The combined file is a single RLE compressed CMYK image, and you can specify the resolution.

When you drag and drop your CT, LW, or FP files, your output is a single PostScript file.

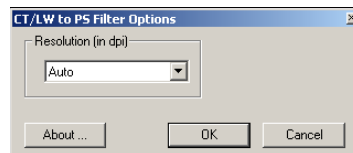
**NOTE:** Some CT/LW files may include a “.” (period) at the beginning of the file name, indicating that they are hidden files. Make sure that you turn on Show Hidden Files in your folder settings. For more information, see the documentation that accompanies your system. To ensure that all files, including hidden files, are copied and processed, drop the entire CT/LW page folder containing all the necessary files.

---

### TO USE THE CT/LW TO POSTSCRIPT FILTER

- 1 Follow steps 1 through 4 in “To select a filter setting” on page 60.

The CT/LW Filter Options dialog box appears.



- 2 Select the final resolution (Auto, 200, 400, or 600) for your image.

**NOTE:** Select Auto to use the device resolution of the digital press.

- 3 Click OK.

## Using the DCS 2.0 to PostScript filter

The DCS 2.0 (Desktop Color Separation) to PostScript filter accepts DCS 2.0 files and outputs a single pre-separated PostScript file.

This filter accepts the following DCS 2.0 files:

- Single/Multiple DCS files, no composite
- Single/Multiple DCS files with grayscale composite
- Single/Multiple DCS files with color composite

The DCS 2.0 filter has no configurable options; however, you must follow these guidelines to convert your DCS 2.0 job:

- Enable the Combine Separations print option. For more information about this option, see [Color Printing](#).
- Make sure that you have necessary multiple files for a DCS 2.0 job and in one folder. If a file is missing, the filter fails to process and an error message appears.
- If multiple files for a DCS 2.0 job are stored in a folder, you may place the entire folder in the Hot Folder.
- If you download a DCS 2.0 job using the Download command, all files may be inside a folder. You must download the entire folder.

**NOTE:** If you configure the DCS 2.0 to PostScript filter, the Imposition feature is not available.

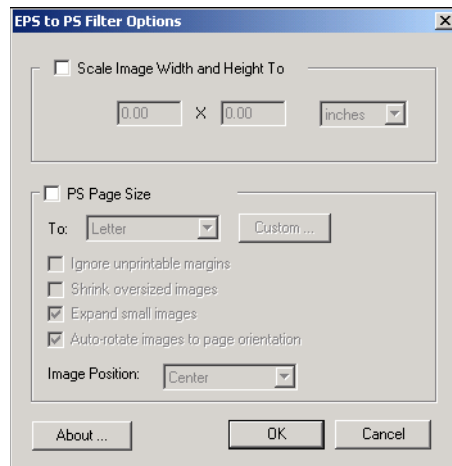
## Using the EPS to PostScript filter

The EPS to PostScript filter accepts all EPS files. This filter gives you the flexibility to force changes in the final dimensions and page size of a file.

### TO USE THE EPS TO POSTSCRIPT FILTER

- 1 Follow steps 1 through 4 in “To select a filter setting” on page 60.

The EPS to PostScript Filter Options dialog box appears.



- 2 Specify the following options:

**Scale Image Width and Height To:** Select this option to scale all EPS files to the desired image size. Select inches or millimeters from the list, and then specify the values.

**PS Page Size:** Select this option to print all EPS files to the page size that you specify. Select a page size from the list or click Custom and specify a custom page size in the Enter Custom Paper Size dialog box.

When this option is selected, you can:

- Ignore unprintable margins to print the image to the entire page size.
- Shrink oversized images to fit proportionately.
- Expand small images to fit proportionately.
- Automatically rotate images to the page orientation.
- Set the position of the image to Top-Left, Top-Right, Center, Bottom-Right, or Bottom-Left.

- 3 Click OK.



## Using the ExportPS filter

ExportPS was developed by Creo-Scitex as an option to their Brisque print workflow. ExportPS translates Brisque jobs into portable, raster PostScript or EPS output that can be processed on the digital press.

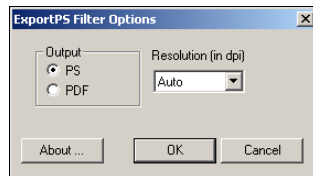
The ExportPS filter processes the ExportPS file by rendering and resampling it to the resolution of the digital press. You can select the output to be PostScript or PDF.

---

### TO USE THE EXPORTPS FILTER

- 1 Follow steps 1 through 4 in “To select a filter setting” on page 60.

The ExportPS Filter Options dialog box appears.



- 2 Specify the following options:

**Output (PS or PDF):** Select the final output.

**Resolution (Auto, 200, 400, or 600):** Select the final resolution of the output. Select Auto to use the device resolution of the digital press.

- 3 Click OK.

## Using the JPEG to PDF filter

The JPEG to PDF filter accepts all standard JPEG files. In addition to allowing you to convert JPEG files automatically without opening them from the application from which they were created, the JPEG to PDF filter allows you to change the final page size of print jobs and adjust the resolution.

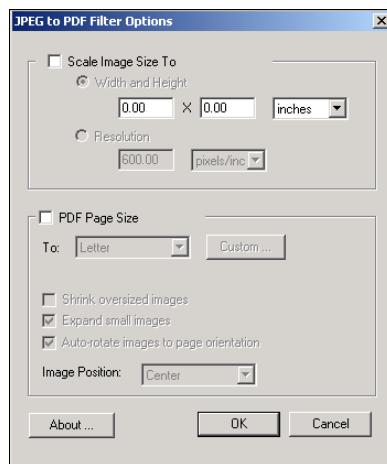
This filter is Non-exclusive, so you can download basic file formats. For more information about Non-exclusive filters, see [“About file conversion”](#) on page 58.

---

### TO USE THE JPEG TO PDF FILTER

- 1 Follow steps 1 through 4 in [“To select a filter setting”](#) on page 60.

The JPEG to PDF Filter Options dialog box appears.



- 2 Specify the following options:

**Scale Image Size To:** Select this option to scale all JPEG files to the desired image size or resolution. Select Width and Height, select inches or millimeters from the list, and specify the values for the image size. Select Resolution, select pixels/inch or pixels/cm from the list, and specify the value for the resolution.

**PDF Page Size:** Select this option to print all JPEG files to the page size that you specify. Select a page size from the list or click Custom and specify a custom page size in the Enter Custom Paper Size dialog box.

When this option is selected, you can:

- Shrink oversized images to fit proportionately.
- Expand small images to fit proportionately.
- Automatically rotate images to the page orientation.
- Set the position of the image to Top-Left, Top-Right, Center, Bottom-Right, or Bottom-Left.

- 3 Click OK.

## Using the PDF/X Preflight filter

PDF/X (PDF Exchange) Preflight is a subset of Adobe PDF designed specifically for prepress data interchange. It defines how applications that read and create PDF/X files should behave.

Two PDF/X standards are commonly used:

- **PDF/X-1a standard:** Addresses blind exchanges to verify that files contain only CMYK (and/or spot colors), with no RGB or device independent (color-managed) data.
- **PDF/X3:** Meets all the requirements of a PDF/X-1a, but contains device independent (color-managed) data.

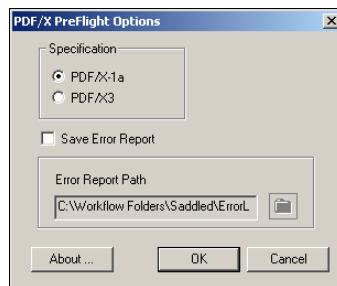
The PDF/X Preflight filter allows you to verify that a PDF document is PDF/X-compliant with either the PDF/X-1a or PDF/X3 standard. If the PDF file is not PDF/X-compliant, the job fails to process and an error report appears.

---

### TO USE THE PDF/X PREFLIGHT FILTER

- 1 Follow steps 1 through 4 in “[To select a filter setting](#)” on page 60.

The PDF/X Preflight Options dialog box appears.



- 2 Specify the following options:

**Specifications (PDF/X-1a or PDF/X3):** Select to verify PDF/X-1a or PDF/X3 compliance.

**Save Error Report:** Select to generate an error report for failed jobs.

**Error Report Path:** Browse to select an error report location.

- 3 Click OK.

## Using the PDF2Go filter

PDF2Go is a PDF output developed by Creo-Scitex as an option to their Brisque workflow. It usually contains PDF layers of rasterized CT and LW job pages, each with a different resolution, in one PDF file.

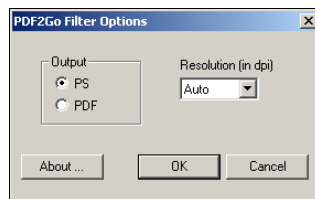
The PDF2Go filter processes the PDF2Go file by rendering and re-sampling it to the resolution of the digital press. You can select PostScript or PDF output.

---

### TO USE THE PDF2GO FILTER

- 1 Follow steps 1 through 4 in “To select a filter setting” on page 60.

The PDF2Go Filter Options dialog box appears.



- 2 Specify the following options:

**Output (PS or PDF):** Select the final output.

**Resolution (Auto, 200, 400 or 600):** Select the final resolution of the output. Select Auto to use the device resolution of the digital press.

- 3 Click OK.

## Using the TIFF to PDF filter

The TIFF to PDF filter accepts TIFF files up to TIFF 6.0. In addition to allowing you to convert TIFF files automatically without opening them from the application from which they were created, the TIFF to PDF filter allows you to change the final page size of print jobs and adjust the resolution.

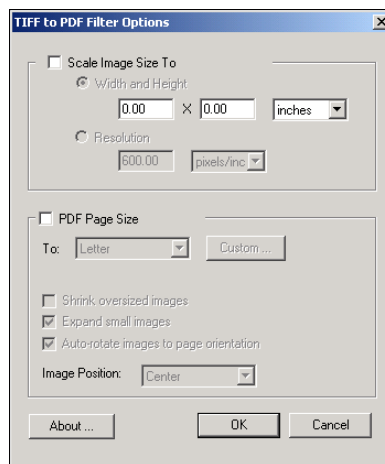
This filter is Non-exclusive, so you can download basic file formats. For more information about Non-exclusive filters, see [“About file conversion”](#) on page 58.

---

### TO USE THE TIFF TO PDF FILTER

- 1 Follow steps 1 through 4 in [“To select a filter setting”](#) on page 60.

The TIFF to PDF Filter Options dialog box appears.



- 2 Specify the following options:

**Scale Image Size To:** Select this option to scale all TIFF files to the desired image size or resolution. Select Width and Height, select inches or millimeters from the list, and specify the values for the image size. Select Resolution, select pixels/inch or pixels/cm from the list, and specify the value for the resolution.

**PDF Page Size:** Select this option to print all TIFF files to the page size that you specify. Select a page size from the list or click Custom and specify a custom page size in the Enter Custom Paper Size dialog box.

When this option is selected, you can:

- Shrink oversized images to fit proportionately.
- Expand small images to fit proportionately.
- Automatically rotate images to the page orientation.
- Set the position of the image to Top-Left, Top-Right, Center, Bottom-Right, or Bottom-Left.

- 3 Click OK.

## Using the TIFF/IT to PostScript filter

TIFF/IT (Tagged Image File Format/Image Technology) is a common TIFF standard. The TIFF/IT-p1 file format usually consists of three files. All TIFF/IT-p1 files contain an FP (Final Page) file. The FP file includes page dimension and position required subfiles, such as CT (Contone) and LW (Line Work) files. CT files contain all photographic imagery. LW files contain high resolution data, such as line art images, text, or lines from drawings.

TIFF/IT-p1 files may also include MP (Monochrome Picture), HC (High resolution Contone), BL (Binary Line), or BP (Binary Picture) files.

When you drag and drop your TIFF/IT-p1 files, your output is a pre-separated PostScript with one separation per page.

Follow these guidelines to convert your TIFF/IT-p1 job:

- Enable the Combine Separations print option. For more information about this option, see [Color Printing](#).
- Make sure that you have all the necessary files for the TIFF/IT-p1 job. You must place all of the files in the Hot Folder at the same time. If a file is missing, the job will not process and you will receive an error.
- If the multiple files for the TIFF/IT-p1 job are stored in a folder, you may place the entire folder in the Hot Folder.
- If you download the TIFF/IT-p1 job using the Download command, all files may be inside a folder and the entire folder may be downloaded.

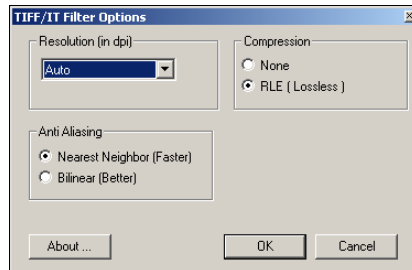
**NOTE:** The imposition feature is not available if you configure the TIFF/IT to PostScript filter.

---

**TO USE THE TIFF/IT TO POSTSCRIPT FILTER**

- 1 Follow steps 1 through 4 in “To select a filter setting” on page 60.

The TIFF/IT Filter Options dialog box appears.



- 2 Specify the following options:

**Resolution (Auto, 200, 400, or 600):** Select the final resolution of the PostScript output from the list. Select Auto to use the device resolution of the digital press.

**Compression (None or RLE Lossless):** Select if you want compression for your PostScript output.

**Anti-Aliasing (Nearest Neighbor Faster or Bilinear Better):** Select how you want to partially fill the edge pixel by choosing the Anti-Aliasing method for your PostScript output.

- 3 Click OK.

## POSTFLIGHT

The Postflight feature helps you determine why some printed jobs may not deliver expected color. Acting as a diagnostic and training tool for all users, it provides helpful global and object-specific information about how a job is actually received and processed by the EX Print Server.

Use Postflight to troubleshoot color problems with a previously printed job or as a preventive measure. You can print the original document (or RIPped and previewed) with all objects (images, graphics, and text) color-coded. A report explains what color spaces are used in the job and what print options affect those spaces. The report also provides information about the printing environment, such as calibration date, time, and method. Print a Test Page to verify the condition of the printing environment.

Postflight is a powerful analysis tool that enumerates in its reports not only those color spaces that are used by visible objects, but any color space called by a job. This can be very useful in diagnosing puzzling situations that may require correction. For example: using one specific combination of a printer driver, an OS, and a desktop publishing application emitting separations for plates, you *might* find that: 1) the Postflight color-coded pages show the Cyan, Magenta, and Yellow separations in the “DeviceGray” color space, while the Black separation is shown in the “DeviceCMYK” color space; 2) the Postflight report enumerates: DeviceGray, DeviceCMYK and DeviceRGB. What once required a PostScript expert to decipher can now be interpreted in minutes using Postflight reports: the Cyan, Magenta, and Yellow pages are defined in “DeviceGray”, the Black page is using the “K” channel of DeviceCMYK, and the job is calling for the RGB color space, without applying it on any user-visible object.

### About Postflight

When the Postflight print option is set to values other than Off, it provides the following information to help you identify possible problems: Postflight Test Page, Postflight color-coded pages, and Postflight reports.

#### Postflight Test Page

You can print the Postflight Test Page alone or in combination with the color-coded pages. The Test Page is printed using the exact same media and global settings (such as calibration) as your job. However, color objects on this page are printed independently of the user-specified source color definitions (such as CMYK simulation and RGB).

If the color on this page is not accurate, the problem lies with the printing environment (such as the calibration, output profile, or print device).



If the color on this page prints correctly but objects in your job do not print in expected colors, it is likely that the problem lies with the color setting specific to these objects. Problems with objects can be: wrong color values for text and graphics, bad quality images, or out-of-gamut colors.

## Postflight color-coded pages

With this option, Postflight prepares a color-coded version of the original document that displays each object with a color corresponding to the color space that the EX Print Server received for the object.

The colors used to represent the color spaces for objects are as follows:

- Gray objects: Gray
- CMYK objects: Cyan
- RGB objects: Red
- Device-Independent objects: Indigo
- Spot color objects: Yellow

By reviewing the colors for all objects, you can identify the print option settings that affect the color conversion of the objects and make appropriate modifications.

## Postflight reports

You can print two types of reports on color-coded pages, either alone or combined with the color-coded document. These reports are printed on the EX Print Server default paper size (Letter for US, A4 for metric) and use the default calibrated color mode.

Select the Postflight report from the following two types:

- **Detailed Report** includes detailed static information with advice on possible procedures and values. An icon identifies the “detailed” information areas of the report.
- **Concise Report** includes only job-specific information. This option is good for advanced users who do not want the instructions which may seem redundant to them.

### Detailed and Concise Reports

The reports provide a document header with information (such as job name, date and time printed, and user name), a ColorWise global settings page, and object-specific settings pages. All pages include the job name, postflight date/time, and pagination in the bottom margin.

- **ColorWise global settings page** provides information that affects every object in a job, such as Calibration Set, the date the EX Print Server was calibrated, the method used for calibration, and the output profile that was used.

- **Object-specific settings pages** provide a list of the settings that were used to process every object in each color space, thus suggesting the locations to correct problems. For example, if you see a problem with an object that is displayed in Cyan in a color-coded page, review the settings listed in the CMYK Objects page and try changing those settings.
- **Spot colors page** lists all spot colors.

For spot colors, the Postflight report lists the colors that are used in a job. It also indicates whether these colors are defined in the EX Print Server. When a spot color is defined in the EX Print Server, a patch is printed next to the color name. When a color is not defined in the EX Print Server, a white patch with an X is printed.

### Important notes on Postflight reports

The main purpose of Postflight is to help you detect, diagnose, and prevent color-related problems. In contrast to generic preflight software, which attempts to predict how a job would be processed, a postflighted job is fully processed by the EX Print Server, allowing accurate reporting on the settings with which the job processed.

This Postflight feature is especially useful in cases where a workflow that was used to submit a job inadvertently converts colors. This conversion occurs with some printer drivers, printing options, and conversions to PDF.

This report focuses on color processing and does not list every printing option that affects your job. For more information about the ColorWise print options, see [Color Printing](#).

**NOTE:** Postflight reports list only those color spaces that were submitted to the EX Print Server with your job. You may occasionally find that a job produces a Postflight report that includes information about color spaces that you cannot locate in the job's color-coded pages. This occurs when an object in the color space is used in the job but is masked by another object, when an object is very light (for example, 0% of a spot color), or when the specific application or printer driver asks the EX Print Server to process a particular color space but does not use it for user-visible objects.

**NOTE:** A Postflight report contains only one page on global settings, and it can include only one Test Page; therefore Postflight cannot describe an entire job accurately unless all pages are printed with the same options and on the same media. This is the case, for instance, with Mixed Media jobs, because they can use multiple output profiles, up to one profile per media in the job. If the page range is set to the pages that use one media only, Postflight produces reliable results for the specified range.

**NOTE:** Postflight is a “reporting” feature that is designed for diagnostic purposes. It is not designed for use with production features such as VDP and Imposition. For high-volume applications in production environments, use Postflight only on the individual pages that need testing.

## Postflight print option

Access the Postflight feature through the Postflight print option. The following values are available for the Postflight print option:

- Off (Default)
- Detailed Report Only
- Concise Report Only
- Test Page Only
- Color-Coded Pages Only
- All Components (Color-Coded document pages, Test Page, and Detailed Report)

**NOTE:** Select a portion of a job to print the Postflight pages by selecting the appropriate page range of a job from the printer driver.

## Postflight workflow

The default settings in the ColorWise print options are such that in most cases you should not have to change them. However, there may be times when you receive unexpected colors for your job. Postflight is a procedure performed after you print a document and receive unexpected or inadequate color. If you have access to Command WorkStation, Postflight also helps you catch color problems before you actually print. Postflight processes your job and collects information about the color objects throughout. The information is then displayed in Color-Coded document pages, a Test Page, and a Detailed or Concise Report.

**NOTE:** The background defined in the Paper Simulation is not indicated as a CMYK object in the Postflight reports. For more information about Paper Simulation, see [page 14](#).

**NOTE:** You cannot use Postflight at the same time that you use the following features: Progressives, Substitute Colors, or Combine Separations. Constraints are set for these print options from the printer driver.

The following scenarios show how Postflight can be helpful to users who demand high color quality.

### To diagnose an unexpected color (see [page 77](#))

Use Postflight to diagnose unexpected color in a job, or determine which print or calibration settings apply to a job.

**To check the calibration status prior to printing a job (see [page 79](#))**

Consider the following before printing a job:

- The EX Print Server may include many Calibration Sets. Which Calibration Set applies to my job?
- When was the EX Print Server last calibrated?
- Which instrument was used for the last calibration?

**To check the quality of the output profile (see [page 80](#))**

If you are considering using a new paper for which you do not have a custom profile, or if you suspect that the output profile for your print device may not precisely describe its color behavior, check your output profile by printing the Postflight Test Page.

**To diagnose a color problem of a specific object (see [page 81](#))**

When experts have verified that the calibration is correct and that the global settings, including the output profile, are correct, but the color of a specific object is still not as intended, you can print a color-coded document and diagnose the problem.

The detailed procedures of these scenarios are described in the following sections.

**NOTE:** For each of the following procedures, instead of printing the report to the EX Print Server, you can also send it to the Hold queue of the EX Print Server and preview the information (of a job with raster data) in ImageViewer. For more information about ImageViewer, see [ImageViewer](#). To view the color of a job correctly, you must set your monitor and monitor profile correctly. For more information about the monitor and monitor profiles, see [page 13](#).

**NOTE:** The procedures for printing a job from a Windows and a Mac OS computer are similar.

## Scenario 1: Diagnose an unexpected color

Use the following procedure to print a job with Postflight set to Off.

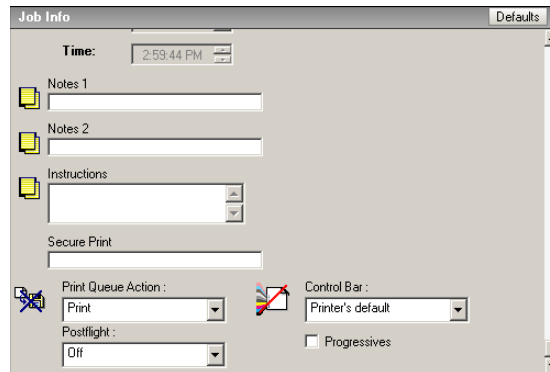
---

### TO PRINT A JOB

- 1 **Open a job from your application.**
- 2 **Choose Print.**
- 3 **Select EX Print Server as your printer and click Properties.**

The Properties dialog box appears with the Fiery Printing tab selected.

- 4 **Click each option icon, and specify the values for each print option.**
- 5 **Click the Job Info icon.**
- 6 **Choose Off from the Postflight menu.**



- 7 **Click OK to close the Properties dialog box.**
- 8 **Click Print.**

The job is printed to the EX Print Server.

After you print a job, use the following procedure to diagnose an unexpected color and print the job with edited color settings.

---

**TO DIAGNOSE AN UNEXPECTED COLOR AND PRINT WITH EDITED COLOR SETTINGS****1 Click the Job Info icon.****2 Choose All Components from the Postflight menu.**

For information about the components of Postflight, see [page 72](#).

**3 Click OK to close the Properties dialog box.****4 Click Print.**

Postflight Test Page, color-coded document pages, and Postflight Reports are printed.

**5 Review all Postflight pages.**

For information about the Postflight pages, see [page 72](#).

**6 Make appropriate changes based on all Postflight pages.**

For more information about the changes, see the following section.

**7 Choose Off from the Postflight menu.****8 Click OK.****9 Click Print.**

The job with the edited color settings is printed to the EX Print Server.

**10 Return to Step 1, if needed.**

Repeat the steps until you get satisfactory color results.

**Making changes**

After reviewing the Postflight information, determine what changes are necessary and apply the changes. Depending on your printing environment, the condition of the print device, and the color settings, possible changes are as follows:

- Correct problems with the print device (see the documentation that accompanies the print device).
- Calibrate the EX Print Server (see [Color Printing](#)).
- Edit the colors of the output profile with Color Editor (see [Color Printing](#)).
- Change the default settings in the Color Process Flow tab in Color Setup (see [Color Printing](#)).
- Change the job specific print option settings using Command WorkStation overrides.

## Scenario 2: Check the calibration status

Use the following procedure to check the calibration status prior to printing a job.

---

### TO CHECK THE CALIBRATION STATUS AND PRINT WITH THE OPTIMUM CALIBRATION CONDITION

- 1 Click the Job Info icon.
- 2 If you have not printed the Detailed Report, choose Detailed Report Only from the Postflight menu.

If you have printed the Detailed Report and are familiar with the content, select Concise Report Only.

For information about Postflight reports, see [page 73](#).

- 3 Click OK.
- 4 Click Print.

The Detailed Report or Concise Report page is printed.

- 5 Review the information in the ColorWise global settings page.
- 6 Perform calibration, if needed.

If service has been performed on the print device since the last calibration, or calibration has not been performed, perform calibration using the Calibration Set specified in the Postflight report.

For more information about Calibration Set, see [Color Printing](#).

- 7 Choose Off from the Postflight menu.
- 8 Click OK.
- 9 Click Print.
- 10 The job is printed to the newly calibrated EX Print Server.

### Scenario 3: Check the quality of the output profile

Use the following procedure to check the quality of the output profile of the print device.

---

#### TO CHECK THE QUALITY OF OUTPUT PROFILE AND PRINT WITH THE OPTIMUM OUTPUT PROFILE

- 1 **Click the Job Info icon.**
- 2 **Choose Test Page Only from the Postflight menu.**

For information about the Postflight Test Page, see [page 72](#).

- 3 **Click OK.**
- 4 **Click Print.**

Postflight Test Page is printed to the EX Print Server.

- 5 **Review the quality of the color on the Postflight Test Page.**

**NOTE:** Make sure that this page was printed with the same media and print option settings as the job.

- 6 **Review the instructions on the Postflight Test Page.**
- 7 **Edit the color of the output profile, or create a profile, if needed.**

It may be necessary to customize the output profile or create one to get optimal results on the media the job is using.

- 8 **Choose Off from the Postflight menu.**
- 9 **Click OK.**
- 10 **Click Print.**

The job is printed to the EX Print Server with the edited or newly created output profile.



## Scenario 4: Diagnose a color problem of a specific object

Use the following procedure to diagnose a color problem.

---

### TO DIAGNOSE A COLOR PROBLEM OF A SPECIFIC OBJECT AND PRINT WITH THE EDITED COLOR SETTINGS

- 1 **Click the Job Info icon.**
- 2 **Choose Color-Coded Pages Only from the Postflight menu.**

For information about Postflight color-coded pages, see [page 73](#).

- 3 **Click OK.**
- 4 **Click Print.**

Postflight color-coded pages are printed to the EX Print Server.

**NOTE:** Alternatively, you can send the Postflight color-coded pages to the Hold queue of the EX Print Server and preview them using ImageViewer. To preview the pages using ImageViewer, make sure that your monitor is set up according to the manufacturer's recommendations and that the correct monitor profile is specified for your monitor. For information about monitor profiles, see [page 13](#).

- 5 **Review the Postflight color-coded pages.**
- 6 **Make changes to the color settings, if needed.**

For information about the ColorWise print options for various color spaces, see [Color Printing](#).

**NOTE:** Use the Color-Coded Pages Only setting to send a job to another print device that has a specific color-space requirement. For example, a document targeted to a CMYK-only press must have only Cyan-colored objects.

- 7 **Choose Off from the Postflight menu.**
- 8 **Click OK.**
- 9 **Click Print.**

The job is printed to the EX Print Server with the edited color settings.

## MULTIPLE PLATE SEPARATIONS

The Multiple Plate Separations feature allows you to combine the multiple pre-separated color plates of a PostScript job into a composite color print. It supports: Cyan, Magenta, Yellow, Black, and one or more spot colors.

The results of combining the multiple plates are predictable and accurate, regardless of the original application used. This feature also fully supports DCS 2.0 file formats when included in a PostScript print job from a page layout application.

### Multiple plate separations workflow

Use the following procedure to print a composite color print from the printer driver.

**NOTE:** The procedures for printing a composite color print from a Windows and a Mac OS computer are similar.

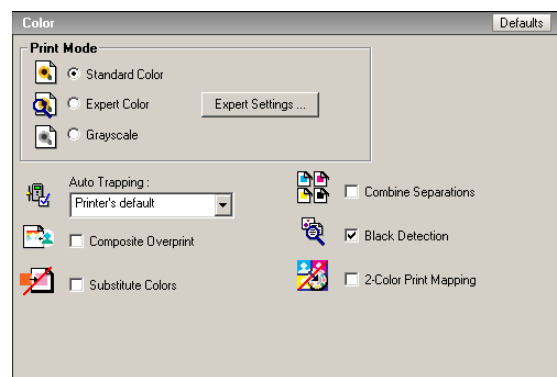
---

#### TO PRINT A COMPOSITE COLOR PRINT

- 1 **Open a color-separated document in a supported application.**
- 2 **Choose Print.**
- 3 **Select EX Print Server as your printer and click Properties.**

The Properties dialog box appears with the Fiery Printing tab selected.

- 4 **Click the Color icon.**



- 5 **Select Combine Separations.**
- 6 **Click Print.**

A composite color print is printed to the EX Print Server.

## Combine Separations print option

Access the Multiple Plates Separations feature through the Combine Separations print option from the printer driver.

The following values are available for the Combine Separations print option:

- Off (Default)
- On

## Supported applications

The following applications have been tested with Mac OS and Windows for compatibility with the Multiple Plates Separations feature:

- Adobe Illustrator
- Adobe InDesign
- Adobe PageMaker
- Adobe FreeHand
- QuarkXPress

## PAPER SIMULATION

The Paper Simulation feature gives you the benefit of the absolute colorimetric rendering that renders the white point of the source color space as a visible color in the output profile color space.

### Paper Simulation workflow

Use the following procedure to print a job with the fixed Paper Simulation feature On.

**NOTE:** The procedures for setting the Paper Simulation print option from a Windows and a Mac OS computer are similar.

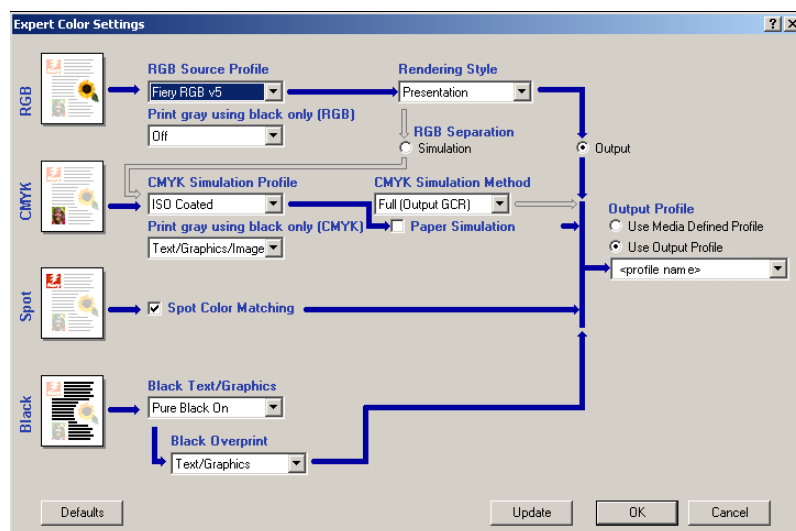
#### TO PRINT WITH THE FIXED PAPER SIMULATION FEATURE ON

- 1 Choose Print from an application.
- 2 Select EX Print Server as your printer and click Properties.

The Properties dialog box appears with the Fiery Printing tab selected.

- 3 Click the Color icon, and then click Expert Settings.

The Expert Color Settings dialog box appears.



- 4 Select Paper Simulation and click OK.
- 5 Click Print.

The job is printed with the fixed Paper Simulation feature.

## Paper Simulation print option

Turn the Paper Simulation feature on or off through the print option from the printer driver.

- **On:** Performs Absolute Colorimetric rendering.
- **Off (Default):** Performs Relative Colorimetric rendering.

## INTEGRATED ALTONA VISUAL TEST

The Altona Test Suite is a project of the European Color Initiative (ECI). The test suite is suited for evaluating RIPs as well as other components in composite PDF workflows for print proofing or print production. Even if you are not yet using PDF/X-3, you can use the Altona Test Suite to identify the weaknesses and limitations of a PDF workflow.

The Integrated Altona Visual Test feature of the Fiery Graphic Arts Package, Premium Edition allows you to verify the level of PDF/X support provided by the software and hardware used in a composite PDF workflow. You perform this test by printing the free version of the Altona Visual Test document on the EX Print Server using the PDF workflow you want to verify. The EX Print Server adds information to the printed output that can be used to determine:

- If the workflow used to send PDF documents to the EX Print Server is PDF/X compatible.
- If a PDF/X workflow is compatible with the limited interpretation of PDF/X by Altona.
- If the color quality of a PDF/X workflow meets a standard.

The Integrated Altona Visual Test simplifies the setup and verification of PDF workflows. You can verify Altona PDF/X compliance without having to purchase the Altona Test Suite Application Kit.

## Altona Visual Test file

You can obtain the free version of the Altona Visual Test file that you need for the Integrated Altona Visual Test at:

[http://www.eci.org/eci/downloads/ECI-en/altona\\_test\\_suite/Altona\\_Visual\\_1v2a\\_x3.pdf](http://www.eci.org/eci/downloads/ECI-en/altona_test_suite/Altona_Visual_1v2a_x3.pdf)

This PDF file must be imported to the EX Print Server using Command WorkStation or Hot Folders, not printed through the print driver. The printer driver converts a PDF file to PostScript, and therefore some PDF/X embedded information is lost. A PDF/X workflow cannot include printing through a printer driver.

For PDF/X compliance as tested by Altona, set the following settings for the Altona Visual Test job in Command WorkStation Job Properties:

Print option	Setting	Location in Job Properties
Use PDF/X Output Intent	Enabled	Expert Color Settings (in Color)
Composite Overprint	Enabled	Color
RGB Source Profile	None	Expert Color Settings (in Color)
RGB Separation	Simulation	Expert Color Settings (in Color)
Scale	100% (no scaling)	Layout

Scaling the Altona Visual Test file and any file designed with resolution-dependent objects often leads to artifacts such as moirés.

For more information about these print options, except for Scale, see [Color Printing](#). For more information about Scale, see [Print Options](#).

If you use all of these settings, the Altona Visual Test File output will indicate PDF/X compliance as tested by Altona.

Interpreting test results

The Altona Visual Test file produces the printed page shown below. The EX Print Server inserts the test results in the lower left area.

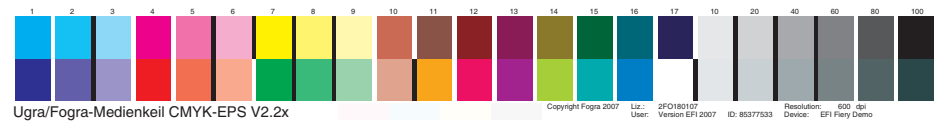
1 Test result area



The table below indicates how to read the test results:

Test result	Indicates
Blank	File printed to a EX Print Server without the Integrated Altona Visual Test feature or workflow is not PDF/X compatible.
A message indicating that the test file was not processed with optimal settings for Altona	Workflow is not compatible with PDF/X as tested by Altona.
Ugra/FOGRA Media Wedge (a standard set of color bars)	Workflow is compatible with PDF/X as tested by Altona.

If the Ugra/FOGRA Media Wedge, shown in the figure below, is printed in the test result area, the workflow is PDF/X compatible for Altona testing. It is therefore correct to visually and colorimetrically inspect the page. If you have a spectrophotometer, such as the ES-1000, and quality control software, such as EFI Color Verifier, you can proceed with measurements to evaluate the degree of color matching. The version of the Ugra/FOGRA Media Wedge inserted by the EX Print Server is scaled and positioned for easy reading by a strip-reading instrument.





**NOTE:** Be sure to use the free version of the Altona Visual Test file, not the purchased one. The purchased version always includes a version of the Ugra/FOGRA Media Wedge in the bottom left area, whether the workflow is valid or not. In addition, the version of the Ugra/FOGRA Media Wedge printed by the purchased version cannot be read conveniently by a strip-reading instrument.

The Integrated Altona Visual Test confirms if your workflow maintains PDF integrity and if it produces valid output that can be used for further analysis and interpretation. To formally determine the level of PDF/X compliance, refer to Adobe published documentation. For information on how to interpret printed Altona pages, refer to the documentation available from the European Color Initiative (ECI).

## Using a PDF/X workflow not compatible with Altona

If text appears in the test result area instead of the Ugra/FOGRA Media Wedge, you cannot use the page for further Altona testing because the workflow is not PDF/X compatible as tested by Altona. However, the EX Print Server is not limited to the Altona interpretation of PDF/X. In particular, if you are using the EX Print Server for production printing rather than proofing, you might choose job settings that are not PDF/X compatible as tested by Altona. For example, you might choose to:

- Set RGB Separation to Output instead of Simulation in production PDF/X workflows, to exploit the maximum gamut of the digital press.
- Scale down the document to increase margins or scale it up to reduce margins.
- Use EX Print Server-specific options, such as Image Smoothing, that would alter the images in the Altona Visual Test file but would enhance your production output.

To get the best possible output from the Altona Test Suite, refer to the information about the Altona Visual Test File at

<http://www.efi.com/support/production/fiery/production/how-to/sys8/>

Altona helps verify PDF/X compliance, with some bias towards ISO color standards. We recommend that you do not limit yourself to ISO color. PDF/X lets you define your own color spaces and take advantage of the wider color gamut often possible with digital printers.

For more information about PDF/X and how to create compliant documents, refer to documents and information available from Adobe.



# INDEX

## A

Auto Trapping  
     about 37  
     Apply Auto Trapping option 40  
     Color Setup 28  
     configurable 37  
     default 38  
     defining 42  
     factory defaults 41  
     pane 39  
     printing 42  
     tab 39, 42  
     trap color reduction 40  
     trap object types 41  
     trap shape 41  
     trap width 40  
     workflow 38

## B

Brightness, Paper Simulation 16

## C

Color Setup  
     Auto Trapping 28, 42  
     Color Process Flow 28  
     Control Bar 28  
     Progressives 28  
     starting 29  
 Combine Separation  
     print option 83  
 Control Bar  
     about 30  
     Color Setup 28  
     Control Bar Definition dialog box 33  
     Control Bar EPS File 34  
     creating 33  
     default control bar 31  
     defining 33  
     definitions 33  
     deleting 36  
     Distance from the edge 36  
     duplicating 36  
     editing 36  
     factory defaults 37

Job Information 35  
     pane 32  
     Print Control Bar option 32  
     print option 30  
     printing 37  
     Reporting print  
         option 31, 37, 77, 78, 79, 80, 81  
     System Page Size 34  
     tab 32  
     Text Location 35  
     workflow 30  
 CT/LW to PS Filter  
     about 62  
     configuring 62

## D

DCS 2.0 to PS Filter  
     about 63  
     configuring 63

## E

EFI Color Verifier 88  
 EPS to PS Filter  
     about 64  
     configuring 64  
 ES-1000 spectrophotometer 88  
 Exclusive filters 58  
 Expert Color Settings 84  
 ExportPS Filter  
     about 65  
     configuring 65

## F

file conversion 58  
 File Filters  
     about 59  
     configuring 61  
     selecting settings 60  
     specifying 60

## G

Graphic Arts Package, Premium Edition  
     features 9

**H**

Halftone Screen  
     angle 49  
     Application Defined 47  
     calibrating 52  
     Dot Shape 50  
     LPI (screen frequency) 49  
     Mac Color Files folder 52  
     Newsprint 47  
     printing 48  
     User Screen 47  
     Windows Color Files folder 52  
     workflow 47  
 Halftone Simulation  
     print option 47  
     tab 49  
 Hot Folders  
     about 58  
     File Filters 58  
 Hue, Paper Simulation 15

**I**

ImageViewer, accessing 54  
 Integrated Altona Visual Test 86

**J**

JPEG to PDF Filter  
     about 66  
     configuring 66

**M**

monitor compensation, Paper Simulation 19  
 monitor profile, specifying 13  
 monitor, setting up 13  
 Multiple plate separations  
     workflow 82

**N**

Non-exclusive filters 58

**O**

output profile  
     Control Bar 35  
     Paper Simulation 16, 17, 18, 22, 84  
     Postflight 76, 78, 80  
     Spot-On 24, 26

**P**

Paper Simulation  
     Brightness 16

fixed values 14, 84  
 Full (Output GCR) 18, 22  
 Hue 15  
 monitor compensation 19  
 output profile 18  
 preview 16  
 print option 15, 85  
 printing 20, 84  
 Save 20  
 simulation profile 17, 22  
 white point editing 15  
 workflow 14, 84

Paper Simulation White Point  
     dialog box 15  
     editing 16

Paper Simulation, Saturation 16

PDF/X compatibility 86

PDF/X Preflight Filter  
     about 67  
     configuring 67

PDF2GO Filter  
     about 68  
     configuring 68

Postflight  
     about 72  
     accurate reporting 74  
     calibration status 76, 79  
     color problems 76, 81  
     color-coded pages 73, 81  
     ColorWise global settings page 73  
     ColorWise print options 74  
     Concise Report 73, 79  
     Detailed Report 73, 79  
     diagnosing 78  
     global settings page 79  
     Hold queue 81  
     ImageViewer 81  
     information 78  
     making changes 78  
     monitor profile 81  
     Object-specific settings pages 74  
     Paper Simulation 75  
     print option 75  
     quality of output profile 76, 80  
     reports 73  
     Spot colors 74  
     Test Page 72, 80  
     unexpected colors 75, 77  
     vs. Combine Separations 75

- vs. Progressives 75
  - vs. Substitute Colors 75
  - workflow 75
- Preview, Paper Simulation 16
- Progressives
  - color channels 46, 50
  - Color Setup 28
  - default 44
  - factory defaults 45
  - pane 45, 46
  - print option 44
  - printing 46
  - sheets and colors 45
  - tab 45
  - workflow 43

## S

- Saturation
  - Paper Simulation 16
- Spot-On, output profile 24

## T

- terminology 7
- TIFF to PDF Filter
  - about 69
  - configuring 69
- TIFF/IT to PS Filter
  - about 70
  - configuring 70
- Two-Color Print Mapping
  - defining 24
  - printing 26
- Two-Way Communication 11

## U

- Ugra/FOGRA Media Wedge 88
- Use PDF/X Output Intent 87

