

# Xerox FreeFlow Print Server 6.0

*For the Xerox 700 Digital Color Press*

701P48438 Version 6.0 X86

## ***Welcome!***

Congratulations! You have the latest software and documentation package for your Xerox FreeFlow Print Server. The changes will impress you. The new interface and workflow options will raise the bar on your productivity. The additional color options and new features will enable new ways for you to grow your business.

Take a glance through these summary pages and we think you'll agree----The Xerox FreeFlow Print Server 6.0 delivers an impressive array of great features!

Prepress, Administrators and Operators will all enjoy the updates immediately.

- ✓ A powerful at-a-glance user interface.
- ✓ Customized screens plus layout options and shortcuts.
- ✓ Great new color and job management options such as Preflight, Soft Proof and Export PDF.
- ✓ Expanded support for the Pantone support. Additional color emulations such as EuroScale and full Device Link Profiles.



## ***What's in this letter?***

**Section I: Customize Your Screens!**

**Section II: Quick Guide to New Features!**

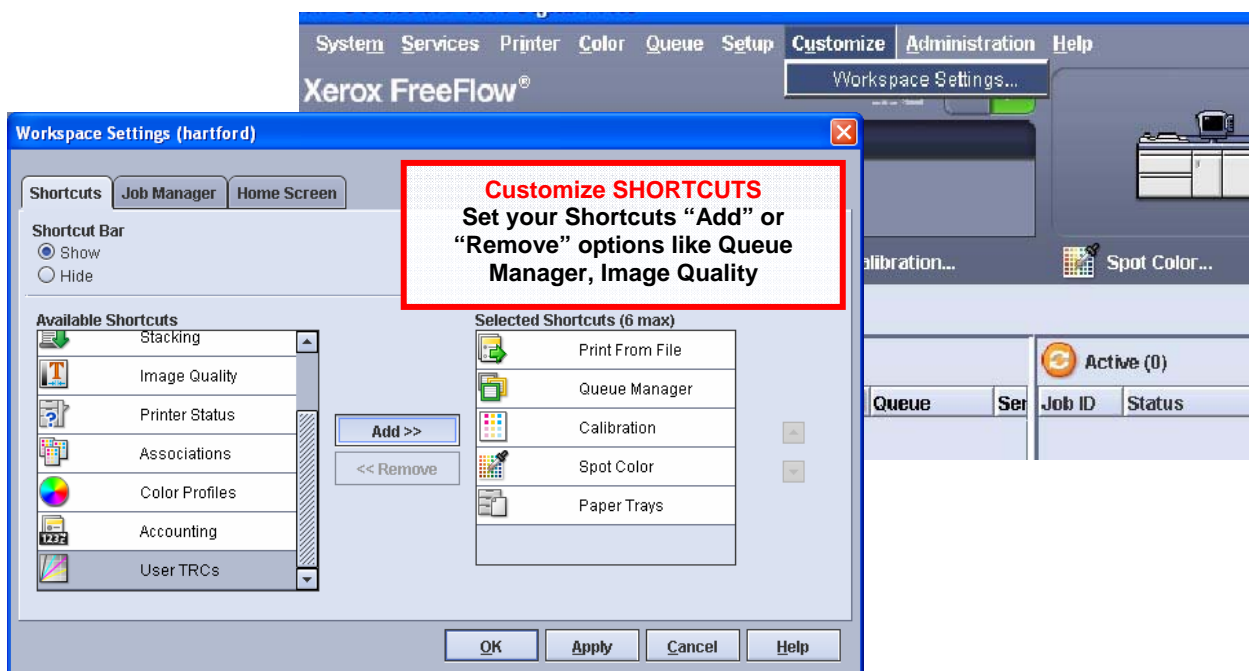
**Section III: Limits and Considerations**

**Section IV: Job Submission Guide**

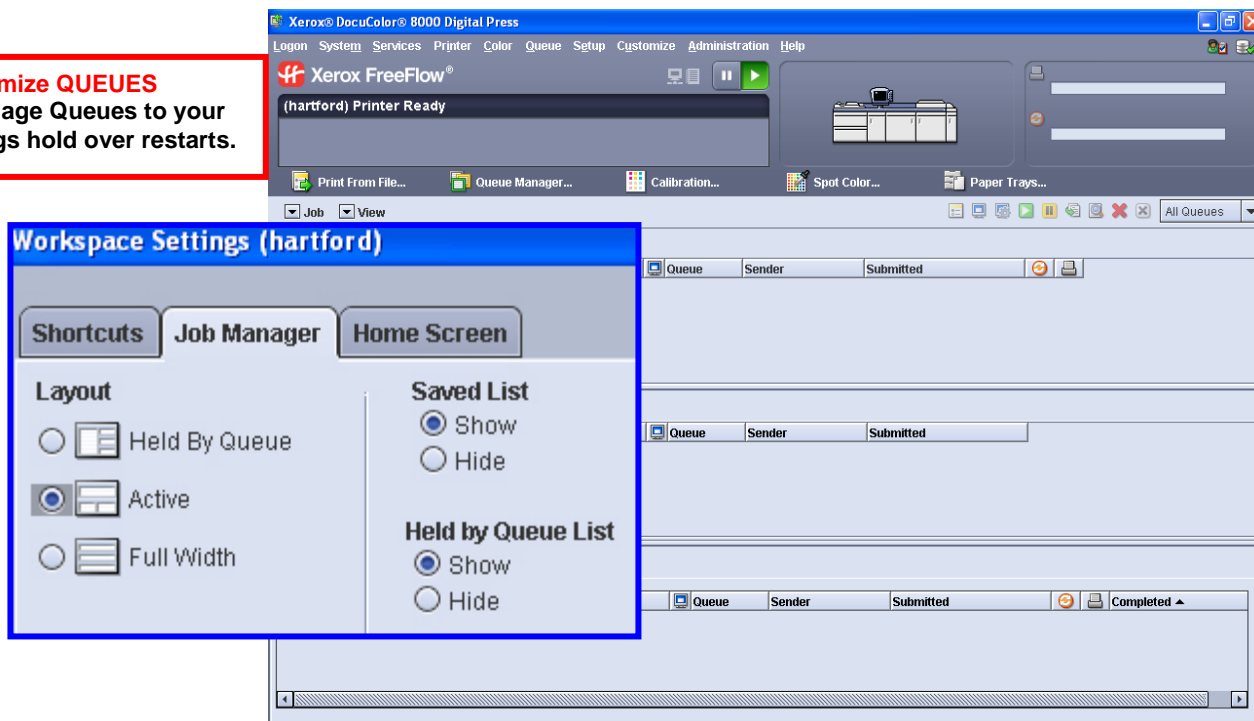
**Section V: How To**

## Section I: Customize Your FreeFlow Server!

The new FreeFlow Server allows you to customize the user interface. Choose your Shortcuts, Queue Alignment and other options. Most settings now retain between restarts, reboots etc.



**Customize QUEUES**  
Set Job Manage Queues to your taste. Settings hold over restarts.



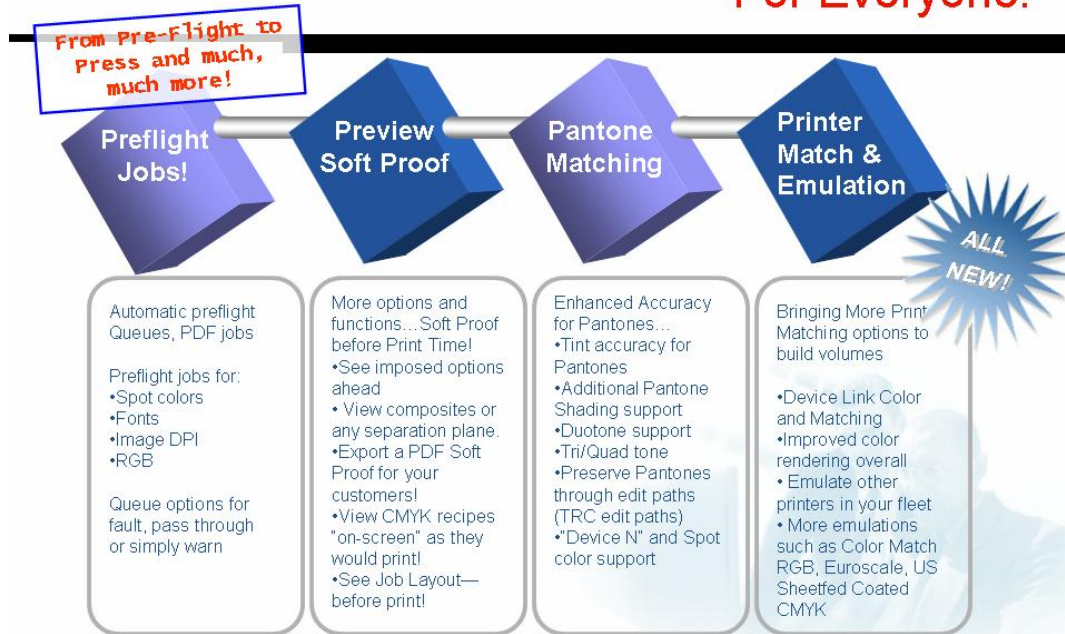
***Section II: Quick Guide to New Features***

# **Xerox FreeFlow Print Server 6.0**

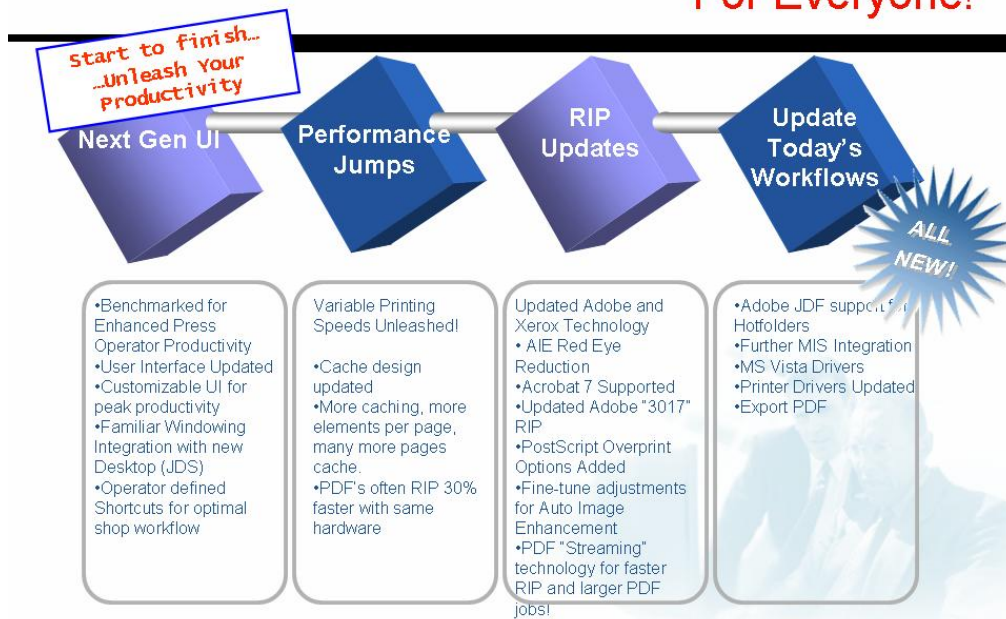
---



## Impressive Color Updates--- For Everyone!



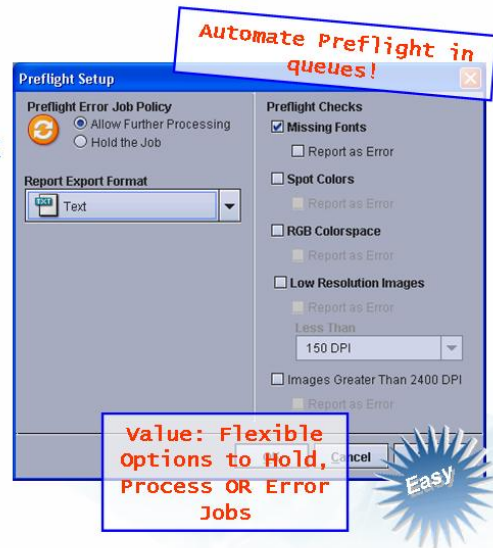
## Improved Productivity--- For Everyone!





## Preflight / Flight Check

- Quick and Automatic Prepress Checks
  - Fonts
  - Spot Colors – Validate your Pantone Licensed corporate colors are inside with genuine Pantone checking
  - RGB color space – protect your CMYK and press workflow
  - Low/High Res – Check for IQ problems and excessive DPI jobs. Why waste operator and RIP time on 4800 dpi images or 72 dpi?
- Create shop policies on Queue-by-Queue Basis! Provides a flexible choice for specific workflows at a site.
- Flexibility to Process, Error or Hold!
- Export detailed reports for customer or pre-press feedback.



## Preview & Soft Proof

Bringing Preview to a higher level!

- Soft Proof your job prior to running on the digital press
  - Send (export) the RIP'ed PDF for upstream soft proof approvals!
  - Validate layout and imposition--prior print--on any job type.
  - Visual inspect VI record alignment before going to press
- Inspect the Pages!
- View composite CMYK or any separation/plate individually.
  - Use eyedropper & zoom on any object's CMYK formula.
  - See job attributes linked with a "click"



## Pantone Matching

### There's a lot to say about Pantone color matching...

- Licensed Pantones preserved even when using popular Color Mgt tools (e.g. TRC Editor!!)
- Tints were fine-tuned for better accuracy. Highlights tuned to match Pantone hue (vs. raw percentages).
- More Pantone Shading and Gradation Support... Sweeps hit the spot!
- Duotone, Tri-tone and Quad-tone support!
  - Blend two corporate spot colors and maintain genuine Pantone prints. Now you can feel free to colorize your images with your corporate color!
- Popular "Custom Spot Colors" Supported Known as "Device N" support by Adobe.

Pantone matching for the most creative (and critical) customers!



Creatively add Pantone Licensed sweeps, tints, blends, duotones--- gaudtones too!

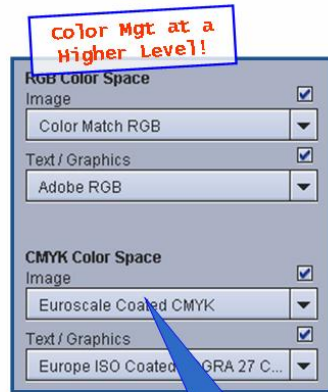
## Device Link & Printer Matching

- FreeFlow Print Server automatically generates Device Links for Better Overall Matching
- Ensures faster Press-to-Press match
- Optimal CMYK matching between presses
- Emulate difficult RGB workflows between presses
- *Shop-wide* color management enabler!

Transfer offset jobs with better accuracy and speed



## Device Link & Printer Matching (Cont)



Expand flexibility, better proofs and quick job turnaround...

- o Achieve closer matching between a DocuColor 250 and Xerox iGen3 in RGB
- o Achieve closer matching between presses
- o Emulate Offset Press look with wider gamut RGB data. For example, print digital photos (RGB) to match a particular digital press look.
- o Preserve black (K) pathway when moving between printers and color management.

Many Standards & Emulations have been Updated...

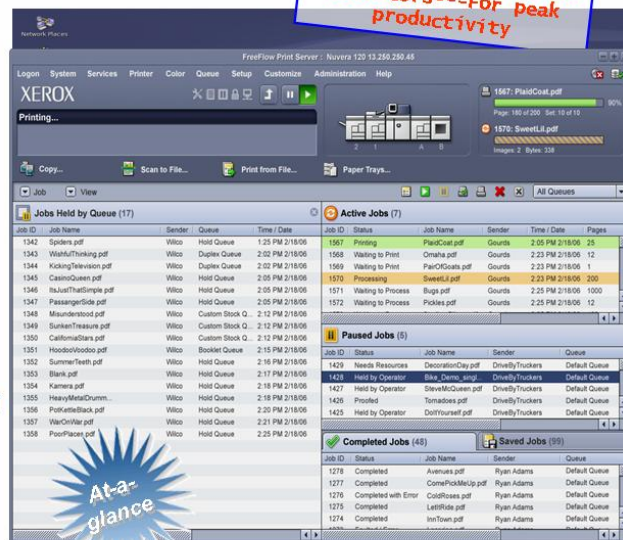
On-board support for Graphic Art emulations such as Euroscale, Color Match RGB, US Sheefed coated CMYK



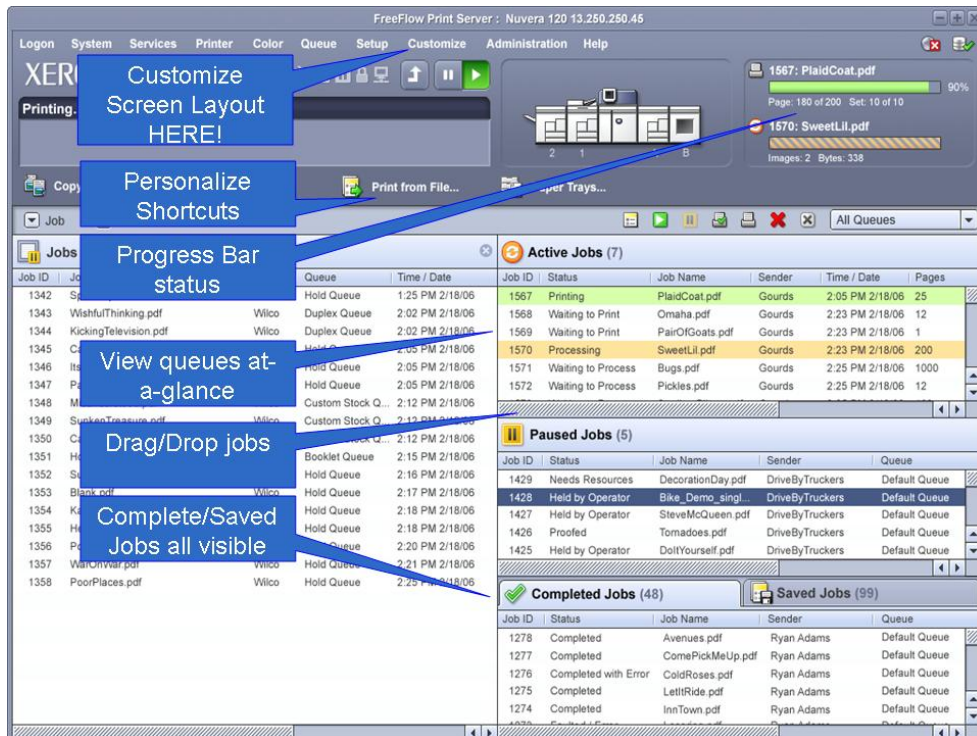
## Next Gen Interface

### Next generation Xerox FreeFlow Print Server Interface...

- Intuitive Drop/Drag job mgt. and submissions!
- Refreshing "at-a-glance" approach to job flow and production management
- Define your own shortcuts—For quick access to your favorites like "Print from File".
- Customizable Views & Arrangements---Allows a custom fit for every operator and site workflow!



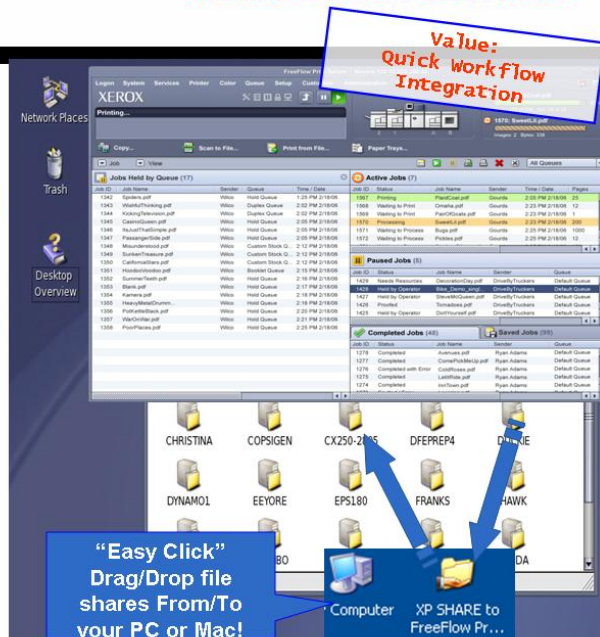




## Next Gen Interface

### Familiar Windowing desktop and function...

- Familiar Windowing Integration with fresh new Desktop
- "Easy Click" shares and site environments
  - Set Window Shares with a mouse click
  - Share either direction with mouse clicks
- Integrated functions---Web Browser, File Manager etc.





## Adobe & Xerox RIP updates

### Great New Xerox Technology for Digital Photos and other applications!

- Automatic Image Enhancement
  - Fine-Tune Adjustments
  - One-button settings or customize to any queue or workflow
  - Automatic Red Eye Reduction!!
- PostScript Overprint Options Added – Popular press option in apps and used to specify trapping composite color files.

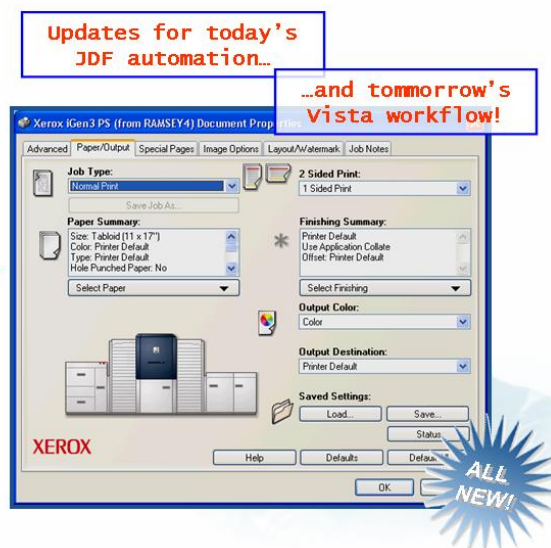
### Updates from Adobe

- Integrated rev. 3017 Adobe RIP
- Acrobat 7 supported



## Updating Today's Workflows

- Adobe JDF support with Hotfolder support
- Microsoft Vista Printer Drivers (see xerox.com)
- Windows Certified WHQL drivers (32/64 bit)



## Updating Today's Workflows ...Ordered Stock Support

Bring Smart DocuTech

Ordered/Pre-Cut workflow to  
your entire DocuColor family!

- Track and purge pre-cut tabs
- Proper tray order automatically  
between sets, jams and jobs!!
- Combine with an excellent  
Page Exception legacy---and  
you have a real time-saver for  
complex publishing jobs!

*Value: DocuTech style  
Pre-cut tab operation*

<b>Size / Color</b> 12 x 18"; White	<b>Type</b> Pre-Cut Tab
<b>Type / Weight</b> Pre-Cut Tab; 90.0	<input type="checkbox"/> Drilled
<b>Coating</b> Uncoated	<b>Sequence</b> 5 1 - 254
	<b>Weight</b> 90 60 - 300 gsm

Enter Pre-Cut tab  
sequence...and automatic  
recovery is enabled!

## New for 6.0 SP2 –Free Flow Print Server for The Xerox 700 Digital Press

Production class platform that is scalable to fit your needs,

### FreeFlow Print Server (Standard Edition)

Color management and tools

- Automatic Image Enhancement
- Pantone License with Spot color editor
- Color workflow including GCR, Trapping
- Color Emulations including SWOP  
& Commercial
- Scanner Glass Calibration

Production Features

- Customizable queues
- Ordered stock recovery
- Hot folders
- Imposition (Basic at Client)
- Page exception programming
- Robust print drivers



**Before:**  
Shadows are  
under exposed  
as camera  
adjusts for  
bright lights



**After:**  
AIE  
improves  
shadow  
detail

## FreeFlow Print Server (Standard Edition)

### Benchmark Security

- Fully customizable security profiles control all aspects of access
- Secure mode print option
- Secure print, telnet and ftp – protect data over network
- Optional Data Overwrite
- Strong passwords
- Virus resistance

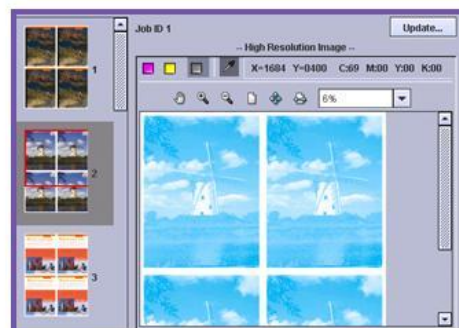
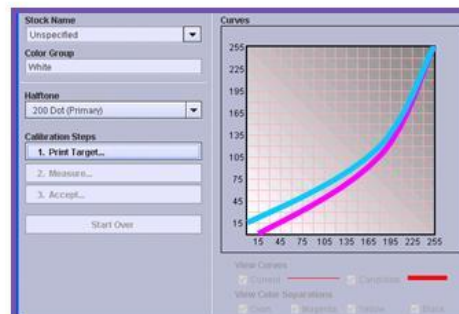
### Variable Information Printing

- PPML v2.1 Graphic Arts
- Optimized PostScript® and optimized PDF
- Background forms
- VIPP®, Line Mode, Database Mode, Native (OPTION)
- IPDS (OPTION)



## FreeFlow Print Server (Professional Package)

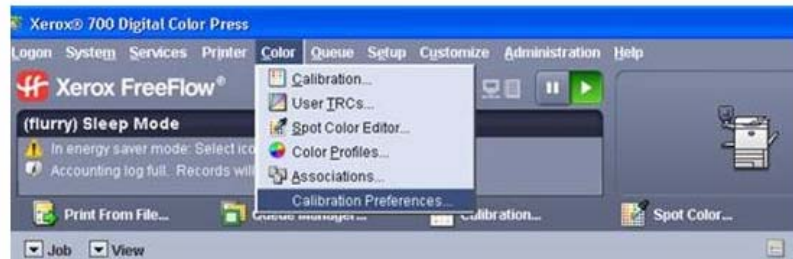
- Advanced Gray Scale Calibration
- X-Rite Spectrophotometer (hardware)
- Custom Printer Characterization Profiling
- Advanced Preview
  - High res previews
  - VI previews
  - Separation viewer, Eye Drop/CMYK/plate inspector
- Export PDF/Soft Proof capabilities
- Advanced Color Correction Tools
- Preflight
- Advanced Imposition





## FreeFlow Print Server (Professional Package)

- Free Flow Print Server Professional Edition will have a preference setting to toggle between using the scanner or the X-Rite as the calibration instrument.
- The default Calibration is Scanner Calibration, however it can be changed by a Calibration Preference setting.
- Select Color -> Calibration Preferences
- X-Rite & Scanner are the two choices.
- Changing the setting will require a restart of the Free Flow Print Server.



### III. Limits and Considerations

Under some power up/power saver conditions a 45-36X fault may occur. The recovery is to power off and power on the printer. The Free Flow Print Server will recover without any job integrity issues. Please contact support for this known limitation for a software spar fix.

The FreeFlow Print Server Standard Edition (SE) and the Xerox 700 digital press comes pre-calibrated and you should expect excellent image quality "out of the box". Calibration of the SE should be done from the Scanner glass when color needs to be brought into color alignment.

The Xerox 700 instruction sheet automatically prints to the name\_PRINT queue. If this queue is held or removed, the Instruction sheet will not print but the calibration target page will print and the calibration process can still be used. Deleting all queues and restarting FFPS will bring queues all back to default behaviors and "as manufactured state".

On the "Calibration" page, use "reset Calibrations" to obtain high quality factory default calibration. This default setting has been fine tuned to produce the best possible combination of colors for your Xerox FFPS paired with your Xerox 700 press.

While calibrating from the Scanner Glass the machine prints out a sheet with an Undelivered Job error page, check to ensure the scan back cable is connected.



If the Free Flow Print Server is configured with the Professional License, the user has the choice of two calibration methods. The default calibration is the Scanner Glass calibration. The second method is done using the X-rite spectrometer. A preference setting under the Color Menu allows the user to specify the calibration method.

Make sure you go to the “CUSTOMIZE” window/pulldown. You can set and align your queues to your taste. You can, for example, set your queues in a Wide format or a Left/Right format (Default). Changing these queue alignments keeps over reboots and is a popular item with operators.

The mainframe language support, IPDS, is available through a separate kit. See Xerox for specifics.

The Remote Workflow software can not connect to a 5.1 system, only to a 6.0 software version.

## ***IV. Job Submission Guide***

**Web Submissions:** Pointing most browsers to the FreeFlow Print Servers' address will result in an easy method to submit print-ready files (e.g., PDF, PS)

<http://192.12.233.56/>

<http://myprintername/>

### **Hotfolder Drag/Drop Submits**

Right click on any queue and select Enable Hotfolder. Then you can drag and drop print ready files to that same queue (e.g., PostScript, PDF etc). The line below show one example!

[\\192.12.233.56\](http://192.12.233.56/)

[\\myprintername\](http://myprintername/)

### **Printer Driver**

Remember to use the CentreWare Printer Drivers for job submissions from applications! See the CentreWare driver documents and software included here. Please visit [xerox.com](http://xerox.com) for updated drivers.

### **Print from File**

On the main screen of the FreeFlow Server, “Print-from-File” provides an easy and popular way to submit Print Ready files such as PDF. In 6.0, you can submit batches of jobs from your USB drive with ease.

## ***V. How To***

### ***Calibrating using the Scanner Glass***

Follow these steps on a system configured for calibration using the scanner.

- 1) Select Color - > Calibration from Menu at the Free Flow Print Server
- 2) Select a loaded US Letter or A4 stock in the Stock Name drop-down list (if not already selected).
- 3) Select a halftone in the Halftone drop-down list.
- 4) Click the Start Calibration button.

The system will display the Target Measurements window and automatically print three sheets:

- 1) “How to Calibrate the Printer” instructions,

- 2) a time-stamped test page printed using the current calibration and
- 3) the calibration target printed on the selected stock for the selected halftone.

The Target Measurements window displays an overview of the remaining steps to complete the calibration. Detailed instructions of the remaining steps are in the printed “How to Calibrate the Printer” instructions. A limited set of status messages is also displayed at the bottom of the window. The operator can terminate the calibration process by clicking the Cancel button in the Target Measurements window.

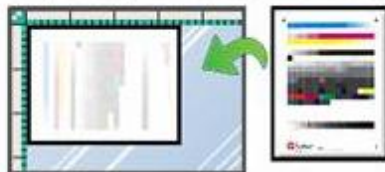
## **How to Calibrate the Printer**

### ***A. Setup Scanner for Calibration***

1. At the printer User Interface, select All Services button
2. Select Network Scanning icon
3. Select Network Scanning tab
  - Select calibration template: prtCal
  - Select 1 Sided under 2 Sided Scanning
4. Select Advanced Settings tab
  - Select Color Space button
  - Select Device Color Space
  - Select Save
5. Select Layout Adjustment tab
  - Select Original Orientation button
  - Select Sideways Images
  - Select Save

### ***B. Calibrate Printer***

1. Place the calibration target on the document glass face down. Align the top of the target to the left edge of the glass, as shown in the illustration below.



2. Press Start on the Printer Keypad.
3. When scanning is done, remove target sheet and select the All Services button.

### ***C. Evaluate Calibration***

1. Retrieve test page from output destination.
2. Return to Print Server User Interface.
3. Select OK if the test page is acceptable.
4. Select Cancel if the test page is not acceptable.