



Xerox EX Print Server, Powered by Fiery[®],
for the Xerox 700 Digital Color Press



Welcome

© 2008 Electronics for Imaging, Inc. The information in this publication is covered under *Legal Notices* for this product.

45069860
23 April 2008





WELCOME

This *Welcome* document provides information about system requirements and an overview of how to set up the Xerox EX Print Server, Powered by Fiery®, for the Xerox 700 Digital Color Press so that you can begin printing. It describes the initial tasks you must perform and points you to sections in the user documentation where the procedures are described in detail. This document also provides a description of the user documents on the User Documentation CD and instructions on printing them.

This document assumes that you have installed the digital press components. Details about the digital press, the network, remote computers, software applications, and Microsoft Windows are beyond the scope of this document.

Terminology and conventions

This document uses the following terminology and conventions.

Term or convention	Refers to
Aero	EX Print Server (in illustrations and examples)
Digital press	Xerox 700 Digital Color Press
EX Print Server	Xerox EX Print Server, Powered by Fiery®, for the Xerox 700 Digital Color Press
Mac OS	Apple Mac OS X
Titles in <i>italics</i>	Other documents in this set
Windows	Windows 2000, Windows XP, Windows Server 2003, Windows Vista
	Topics for which additional information is available by starting Help in the software
	Tips and information
	Important information
	Important information about issues that can result in physical harm to you or others

About the documentation

This document is part of a set provided to users and system administrators of the EX Print Server. The documents are on the User Documentation CD and are in PDF (Portable Document Format). These files can be viewed online or printed using Adobe Reader. When viewed online, these files contain links and cross-references that allow you to quickly and easily locate needed information. For more information, see [“Installing and using Adobe Reader”](#) on page 5.

The following comprise the documentation set for your EX Print Server:

- *Print Server Setup Roadmap* provides a graphical overview of the minimum Setup requirements to ensure that the EX Print Server functions on your network.
- *Welcome* provides an introduction to the EX Print Server and the user documentation.
- *Configuration and Setup* explains configuration and administration of the EX Print Server for the supported platforms and network environments. It also includes guidelines for providing printing services to users.
- *Printing from Windows* and *Printing from Mac OS* describe how to install the printer drivers on Windows and Mac OS computers, establish printing connections for different networks, and print from users' computers. Each document also describes the installation and use of print-related utilities, such as Job Monitor and Printer Delete Utility.
- *Print Options* provides information about print options for the EX Print Server. This document describes print options and features that you access from the printer driver, Command WorkStation job overrides, and Hot Folders job properties.
- *Utilities* describes how to install, configure, and use the software utilities included on the User Software DVD.
- *Color Printing* explains how to manage color output on the EX Print Server. This document provides information about ColorWise Pro Tools, including how to calibrate the EX Print Server and set ColorWise print options from Windows and Mac OS computers.
- *Graphic Arts Package* addresses the specific needs and requirements of graphic arts professionals and commercial print shops.
- *Fiery Color Reference* provides an overview of color management concepts and workflows, and describes how to manage color from various applications.
- *Workflow Examples* explains complicated printing scenarios and provides cross-references to relevant information in the documentation set.
- *Variable Data Printing* supplements the information in *Workflow Examples* with reference information about variable data printing (VDP). This document provides an overview of FreeForm and explains where to set FreeForm options.
- *Glossary* provides definitions for popular color concepts, printing applications, and printing terms used in the documentation set.
- *Customer Release Notes* provide last-minute product information and workarounds for some of the problems you may encounter.

About Help



Most of the user software, utilities, and printer drivers contain Help that is accessible from Help buttons or the main toolbar menus. Help provides detailed procedures on using the application and, in some cases, provides additional detail. The documentation refers you to Help for more information, as appropriate.

Installing and using Adobe Reader

For your convenience, the current version of Adobe Reader for Windows and Mac OS X is included on the User Documentation CD. This version features enhanced capabilities for full rules-based search across the entire documentation set. We strongly suggest that you install this version of Reader to take advantage of these capabilities, unless you have installed the equivalent version of Adobe Acrobat.

TO INSTALL ADOBE READER

- 1 **Insert the User Documentation CD into the CD-ROM drive of your computer.**
- 2 **Double-click the CD icon.**
- 3 **Open the Adobe Reader folder.**
- 4 **Open the folder for your platform and double-click the installer file within (.exe for Windows, .dmg for Mac OS X).**
- 5 **Follow the on-screen installation instructions.**

Using Adobe Reader

View or print the PDF files provided on the User Documentation CD using Adobe Reader (or Acrobat). After you install Reader, you can double-click a PDF icon to open the file. Note specifically the advanced search capability of the version of Reader that is provided on this User Documentation CD. You can search for a word or phrase across the EX Print Server documentation set by examining all the documents within a specific language folder on the User Documentation CD. For information about using this and other features of Reader, see the Help that accompanies the application.

NOTE: You can view the documentation from the CD or copy the language folder to your desktop. If you copy the files to your computer, keep all the files in the language folder and do not rename the files, or the cross-reference links will not work properly.

BASIC STEPS TO PRINT

The following section includes a basic workflow for setting up your EX Print Server in order to print documents. It takes you from printing a Configuration page and configuring Setup to installing printer drivers to print a job. Detailed instructions for all these procedures are found in other documents in the user documentation set. For a summary of supported EX Print Server documents, see [page 4](#).

These instructions assume that a service technician has unpacked and connected the EX Print Server and that the EX Print Server and digital press are powered on. In some cases, initial print device settings may be required. See *Configuration and Setup*.

The following steps assume that you are adding the EX Print Server to a TCP/IP network that includes Windows XP user computers. Although this example is specific to a Windows XP TCP/IP environment, users in other computer environments may also benefit from these instructions.

STEP 1

Print a Configuration page from the digital press control panel

Print the Configuration page and note the EX Print Server name and the IP address. When you perform EX Print Server Setup and install the printer driver, you will need to reference this information.

- 1 **At the digital press, press the All Services Button, if necessary, and then press the Web Application button.**
- 2 **On the digital press control panel, press the Info tab.**
- 3 **Press Configuration.**
- 4 **Press Yes to confirm printing the Configuration page.**



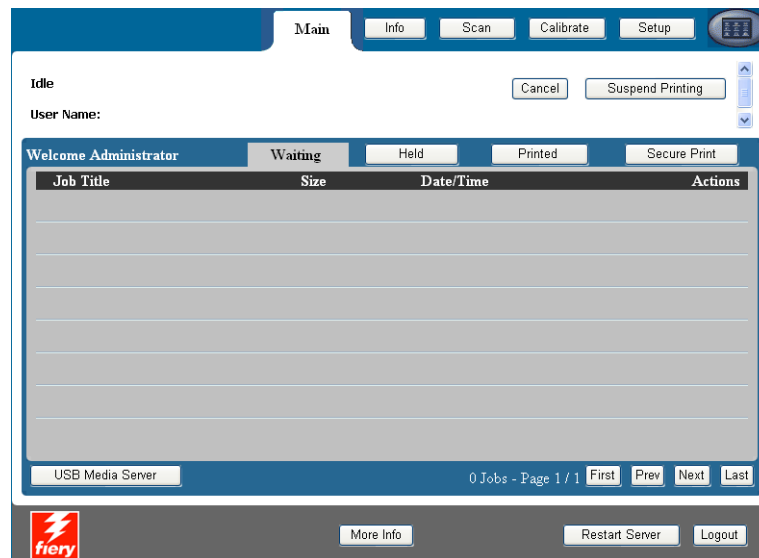
- 5 **Review the default EX Print Server settings and determine if they are compatible with your network environment.**

If you change these settings, print another Configuration page to verify your changes.

STEP 2

Set up the EX Print Server at the digital press control panel

- 1 Make sure that the information screen on the digital press control panel reads Idle.
- 2 At the digital press, press the Web Applications button.



- 3 On the digital press control panel, press Setup.
- 4 Press the Password field and type your Administrator password.
- 5 Press Save and then press Login.
- 6 Press the button for the Setup that you want to access.

If your network uses DHCP, the EX Print Server acquires the IP address automatically. Otherwise, type the EX Print Server IP address.

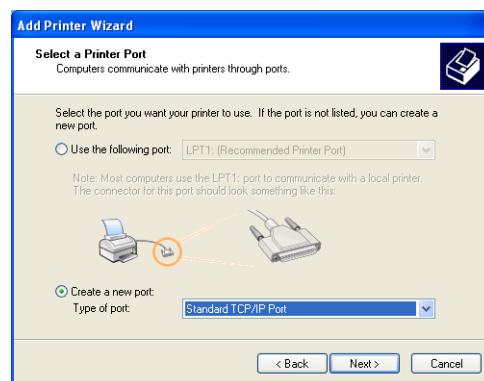
Print a Configuration page to confirm changes to Setup (see [Step 1](#)).

STEP 3

Install Postscript printer drivers on user computers for TCP/IP printing

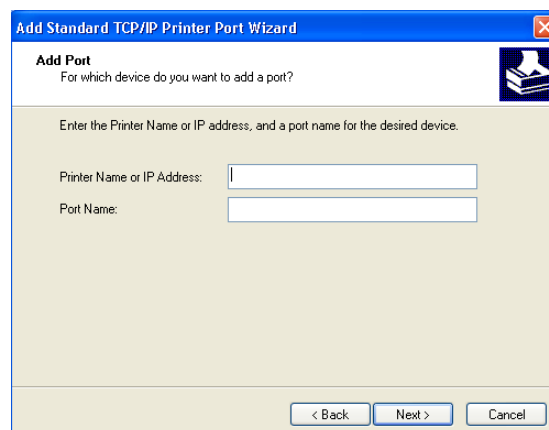
From a user's Windows XP computer:

- 1 Click Start and choose Printer and Faxes.
- 2 Click Add a printer.
- 3 Click Next.
- 4 Select "Local printer attached to this computer" and click Next.
- 5 Select Create a new port, choose Standard TCP/IP Port, and then click Next.



The Add Standard TCP/IP Printer Port Wizard dialog box appears.

- 6 Click Next.
- 7 Type the EX Print Server IP address or DNS name and click Next.



- 8 If the Standard TCP/IP Port Wizard window appears, select the Device Type and click Next.
- 9 Click Finish.

- 10 Click **Have Disk** in the dialog box displaying lists of manufacturers and printers.
- 11 Insert the **User Software DVD** into the **CD-ROM** drive of your computer and browse to the **English\Prntdrv\Ps_drvr\Win_2K_XP_VISTA** folder.

Make sure that `Oemsetup.inf` or `Oemsetup` is selected, click **Open**, and then click **OK**.

You can also download printer drivers from the **Download WebTool**.

- 12 Select the **EX Print Server** printer driver as your printer and click **Next**.
- 13 Type a name for the **EX Print Server** in the **Printer name** field, indicate whether you want to make it the default printer, and then click **Next**.
- 14 Select **Do not share this printer** and click **Next**.
- 15 Select **No to printing a Test Page**, click **Next**, and then click **Finish**.

The necessary files are installed on your hard disk. When installation is complete, the **Printers** window appears, with an icon for the newly installed printer.

For more information about installing Windows printer drivers, see [Printing from Windows](#).

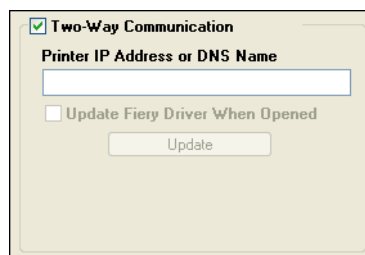
For information about installing Mac OS printer drivers, see [Printing from Mac OS](#).

STEP 4

Update the printer driver to include EX Print Server options

From a user's Windows XP computer:

- 1 Click Start and choose Printers and Faxes.
- 2 In the Printers window, select the EX Print Server printer driver icon.
- 3 Choose Properties from the File menu.
- 4 Click the Accessories tab.
- 5 Select Two-Way Communication.



- 6 Type the EX Print Server IP address or DNS name.
- 7 Select Update Fiery Driver When Opened to display the printer's current default settings when the printer driver is opened.
- 8 Click Update.

Options such as finishing units that are installed on the EX Print Server are displayed in the printer driver and are available the next time you print a job.

- 9 Click OK.

For more information about updating Windows printer drivers, see [Printing from Windows](#).

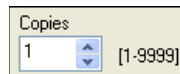
For information about updating Mac OS printer drivers, see [Printing from Mac OS](#).

STEP 5

Print a job

From a user's Windows XP computer:

- 1 From your application, choose **Print from the File menu**.
- 2 Select the **EX Print Server printer driver and click Properties**.
- 3 Specify **EX Print Server job options, such as Copies and finishing options, and then click OK**.



A screenshot of a Windows dialog box titled "Copies". It features a text input field containing the number "1", a small up/down arrow control to its right, and a range indicator "[1-9999]" to the right of the input field.

- 4 Click **OK again**.

For information about printing jobs from a Windows computer, see [Printing from Windows](#).

For information about printing jobs from a Mac OS computer, see [Printing from Mac OS](#).



After completing the basic steps to print, you may want to explore additional topics, depending on your printing environment, for example, creating secure user groups and assigning user passwords (see [WebTools Configure Help](#)) or managing and editing jobs submitted to the EX Print Server using utilities such as [Command WorkStation](#) (see [Utilities](#)).

System requirements for user computers

To install the EX Print Server user software on a Windows or Mac OS computer, the computer must be equipped with a built-in or external DVD drive. The following table lists the minimum system requirements.

Minimum requirements for	Windows 2000/XP/Server 2003/Vista	Mac OS
Operating system	<p>The following Windows versions (with latest service packs) are supported:</p> <ul style="list-style-type: none"> Windows 2000 Professional Windows 2000 Server Windows 2000 Advanced Server Windows XP Home, 32-bit Windows XP Professional, 32-bit and 64-bit Windows Server 2003, Standard Edition, 32-bit Windows Server 2003, Enterprise Edition, 32-bit Windows Server 2003, Datacenter Edition, 32-bit Windows Vista, Home Basic Edition, 32 and 64-bit Windows Vista, Home Premium Edition, 32 and 64-bit Windows Vista, Ultimate Edition, 32 and 64-bit Windows Vista, Business Edition, 32 and 64-bit Windows Vista, Enterprise Edition, 32 and 64 bit 	<p>The following Mac OS versions (with latest Software updates) are supported:</p> <ul style="list-style-type: none"> Mac OS 10.3.9 (for PowerPC-based Mac OS computers) Mac OS 10.4.x (for PowerPC and Intel-based Mac OS computers)
Memory for printing and utilities	256MB of RAM for printing and operating utilities (512MB recommended)	
Networking protocol	TCP/IP, IPX/SPX	TCP/IP, AppleTalk
Networking protocol for Fiery utilities	TCP/IP	
WebTools	<p>Java-enabled web browser:</p> <ul style="list-style-type: none"> Mac OS X: Safari v1.2 or later Windows: Internet Explorer 6 and 7, Firefox v2.0 <p>NOTE: Portions of WebTools require Java JVM v1.5 browser support.</p> <p>NOTE: Microsoft releases frequent updates to Internet Explorer. Because support cannot be guaranteed for all versions, use the versions specified for best results.</p> <p>A monitor and video memory that supports 16-bit color at a minimum resolution of 800x600</p> <p>A TCP/IP-enabled network and the EX Print Server IP address or DNS name</p> <p>Web Services enabled on the EX Print Server</p>	

Minimum requirements for	Windows 2000/XP/Server 2003/Vista	Mac OS
Command WorkStation	Windows-based computer with a 1.0GHz or greater Pentium III processor	800MHz or greater Macintosh G3
	200MB available hard disk space for installation	80MB available hard disk space for installation 500MB is recommended for writing full previews of raster files and handling large PS or PDF files
	256MB of RAM	
	A monitor that supports 16-bit color at a minimum resolution of 1024x768 Video adapter card with 2MB of video memory TCP/IP networking protocol installed	
	DVD drive	
Impose on Command WorkStation	In addition to requirements for Command WorkStation: <ul style="list-style-type: none"> • Windows-based computer with 333MHz Pentium processor • Dongle to be installed on USB port for every client workstation • Acrobat and PitStop software included with Impose 	

Other network requirements

UNIX (TCP/IP) workstation	<p>Standard TCP/IP connectivity</p> <p>TCP/IP printing software that conforms to RFC1179 (Berkeley lpd protocol)</p> <p>Sun OS 4.1.3 or later</p> <p>Red Hat Linux 9 or later</p> <p>Turbolinux 7</p> <p>Solaris 9 or later</p>
IPX (Novell) network	<p>Novell server</p> <p>Novell NetWare software v5.x or later</p> <p>NOTE: The iPrint feature of NetWare 6.x is not supported.</p> <p>NDPS gateway in NetWare 5.x or later</p> <p>Support for Ethernet SNAP, Ethernet II, Ethernet 802.3, and Ethernet 802.2 frame types</p>

Shutting down and rebooting the EX Print Server

You may have to shut down the EX Print Server for service. When you do, network access to the digital press is interrupted. Before you remove or attach any cables to the EX Print Server to perform service, shut down the EX Print Server.

TO SHUT DOWN THE EX PRINT SERVER FROM THE DIGITAL PRESS CONTROL PANEL

- 1 **Make sure that the EX Print Server is not receiving, processing, or printing any files.**

If the system has just finished processing, wait at least five seconds after the system reaches Idle before beginning the shutdown procedure.

- 2 **Press the Menu button.**
- 3 **At the EX Print Server Control Panel, press the Menu button.**

NOTE: Before you remove the EX Print Server from the network, notify the network administrator.

TO REBOOT THE EX PRINT SERVER FROM THE DIGITAL PRESS CONTROL PANEL

- 1 **Make sure that the EX Print Server is not receiving, processing, or printing any files.**
- 2 **Press the Menu button.**
- 3 **At the EX Print Server Control Panel, press the Menu button.**